

We would like to thank the editor for his review of our manuscript. As the editor's suggestion, we attempt to improve the quality of the writing. And also we had the manuscript edited by the English editing service.

We attach the the marked-up manuscript showing the changes and the certificate of english editing provided by the editing service.

Influence of grid aspect ratio on planetary boundary layer turbulence in large-eddy simulations

S. Nishizawa, H. Yashiro, Y. Sato, Y. Miyamoto, and H. Tomita

RIKEN Advanced Institute for Computational Science, Kobe, Japan

Correspondence to: S. Nishizawa (s-nishizawa@riken.jp)

Abstract. We examine the influence of the grid aspect ratio of horizontal to vertical grid spacing on turbulence in the planetary boundary layer (PBL) in a large-eddy simulation (LES). In order to clarify and distinguish them from other artificial effects caused by numerical schemes, we used a fully compressible meteorological LES model with a fully explicit scheme of temporal integration.

5 The influences are investigated with a series of sensitivity tests with parameter sweeps of spatial resolution and grid aspect ratio. We confirmed that the mixing length of the eddy viscosity and diffusion due to sub-grid scale turbulence plays an essential role in reproducing the theoretical $-5/3$ slope of the energy spectrum. If we define the filter length in LES modeling based on consideration of the numerical scheme, and introduce a corrective factor for the grid aspect ratio into the mixing
10 length, the theoretical slope of the energy spectrum can be obtained; otherwise, spurious energy piling appears at high wavenumbers. We also found that the grid aspect ratio has influence on the turbulent statistics, especially the skewness of the vertical velocity near the top of the PBL, which becomes spuriously large with large aspect ratio, even if a reasonable spectrum is obtained.

1 Introduction

15 In meteorological simulations, the grid aspect ratio a of ~~the~~ horizontal Δx to vertical grid spacing Δz is generally much larger than that in other fluid dynamics fields. Here, we define the aspect ratio as $a = \Delta x / \Delta z$. The use of such large aspect ratios has been validated based on the phenomena studied in this field. So far, most of the phenomena of interest are considerably affected by the rotation of the earth and vertical stratification; both lead to differences between the horizontal and
20 vertical scales of atmospheric phenomena. Further, since it is natural to treat the atmospheric motions separately in the horizontal and vertical directions in order to understand the atmospheric dynamics, a large aspect ratio is used for grids in meteorological simulations. We will have a brief review of the atmospheric phenomena of various scales and the grid aspect ratio used in numerical simulations ~~in the conventional for the phenomena in the previous~~ studies. This background would help us to
25 understand the grid configuration in current meteorological large-eddy simulations (LESs) and ~~then~~

the importance of the investigation of the influence-effect of the grid aspect ratio on the turbulence in LES.

Atmospheric phenomena have a wide range in terms of both time and space. One of the initial targets of the studies involving meteorological numerical simulations was the planetary wave. In this case, the horizontal scale, at $O(1000)$ – $O(10\,000)$ km, is much larger than the vertical, and is dominated by the effect of rotation. The vertical scale is mainly determined by atmospheric thickness, characterized by the depth of the troposphere, i.e., a scale of $O(10)$ km, and the motion is essentially two-dimensional (barotropic). The synoptic scale phenomena, whose horizontal scales are $O(100)$ – $O(1000)$ km, are also important targets, with smaller horizontal scale than planetary-scale phenomena. They have the same vertical scale of $O(10)$ km as planetary-scale phenomena, but have a vertical (baroclinic) structure. To express the vertical structure of such phenomena, several vertical layers in a numerical simulation are configured according to the degree of vertical structure desired. A grid aspect ratio of $O(100)$ is typically used for these phenomena.

If we turn our attention to mesoscale phenomena, whose horizontal scales are $O(10)$ – $O(100)$ km, a more detailed expression of vertical structure is required. Since moist convection plays an important role in the vertical motion of such phenomena, hydrostatic balance, which is a good approximation for planetary and synoptic-scale phenomena, is no longer satisfied. The spatial scale of their vertical motion is roughly $O(1)$ km. Therefore, the grid aspect ratio in this case should be reasonably determined with $O(10)$ – $O(100)$. In the beginning of the 1970s, one of the most significant paradigm changes in meteorological numerical studies was the appearance of non-hydrostatic models (e.g., Klemp and Wilhelmson, 1978). Cumulus convection is explicitly represented in these models (e.g., Skamarock et al., 2008; Hodur, 1997; Tripoli, 1982; Xue et al., 2000; Black, 1994; Saito et al., 2006; Tsuboki and Sakakibara, 2002). Recently, global convection system-resolving models, such as NICAM (Tomita and Satoh, 2004; Satoh et al., 2014), have been developed to investigate the interactions between synoptic-scale phenomena, cloud clusters, and individual cumulus clouds. To resolve vertical motion precisely, the number of vertical layers in such models is larger than in general circulation models (GCMs), but the grid aspect ratio is still large. For example, it is five in Miyamoto et al. (2013, 2015).

In the atmosphere, there are many smaller scale variabilities than associated with cumulus clouds. For example, the spatial scale of the dominant motion in the unstable planetary boundary layer (PBL) is smaller than 1 km. Clearly, turbulence in the PBL is an important issue for all meteorological models, because heat and mass transport by turbulence in both the horizontal and vertical directions strongly affect the atmospheric mass and energy balances. In particular, vertical transport is important for atmospheric variability over the PBL. Its effect is parameterized as turbulence models in GCMs and cloud-resolving or permitting models (e.g., Mellor and Yamada, 1982; Nakanishi and Niino, 2004). At this scale, the effects of rotation and stratification are smaller compared with those of advection. Thus, we may say that such variability is essentially isotropic and three-dimensional.

This means that an isotropic grid, whose grid aspect ratio is unity, would be preferred to reproduce these small variabilities.

65 LES is a vital tool to ~~represent such small-scale variabilities explicitly. LES explicitly represent~~ such small-scale variabilities. It is designed to resolve turbulence at scales down to the inertial sub-range by parameterizing sub-grid scale (SGS) turbulence based on the theory of energy cascades. ~~From the 1970s, LES has started being used~~ The use of LES for meteorological simulations has started from the 1970s (e.g., Deardorff, 1980; Moeng and Wyngaard, 1988; Sullivan et al., 1994),
70 and it is recently used for realistic meteorological simulations with the rapid development of computers (e.g., vanZanten et al., 2011). The dynamics of three-dimensional isotropic turbulence forms ~~the~~ theoretical basis of most ~~sub-grid-scale SGS~~ models in LES ~~is on dynamics of three-dimensional isotropic turbulence~~. In terms of phenomenology and methodology, an isotropic grid would be the most suitable for LES. Nevertheless, the grid used in meteorological LESs usually has a large aspect ratio, mainly because of limitations of computational resources. The computational domain for
75 the meteorological LES has often ~~wider range in the horizontal than that in the vertical as well as a wider horizontal range than~~ the vertical range; this is true for the previous meteorological simulations as well: e.g., the domain size ~~is has~~ 3 km² of horizontal region and is 1 km ~~height in~~ Sullivan et al. (1994); high in Sullivan et al. (1994), and it has 12.8 km² of horizontal region and is
80 4 km ~~height high~~ in vanZanten et al. (2011). A grid with a large aspect ratio reduces the total number of grids. The effect of the grid aspect ratio has not been discussed explicitly in most previous studies. The purpose of this study is to examine the influences of the grid aspect ratio on the turbulent aspects of the PBL from a meteorological viewpoint when LES is applied. To do so, we performed a series of PBL experiments by systematic parameter sweeps of aspect ratio and grid spacing.

85 We present an overview of the model used in this study in Sect. 2, focusing on the modeling related to this study. Since the detailed descriptions of the model are important for the traceability of the experiment and reliability of the model, we present them in the appendices. The configuration of the numerical experiments ~~are is~~ shown in Sect. 3. The influences of the grid aspect ratio on turbulence are discussed in Sect. 4. Section 5 gives the summary and concluding remarks.

90 2 Model description

The model used in this study is SCALE-LES (<http://scale.aics.riken.jp/>), which was developed as a meteorological large eddy simulation model. In this section, we focus on describing the essential parts of the model for the purposes of this study; the model dynamics and turbulence schemes are described in Sects. 2.1 and 2.2, respectively. In the latter, we consider in particular the relationship
95 between the numerical filter and spatial filter in LES.

Detailed descriptions of the model, including the discretization method, which are not directly related to the topic of this study, are given in the appendices as follows: the governing equations

are in Appendix A1, the temporal integration scheme is in Appendix A2, the spatial discretization is in Appendix A3, the numerical filter is in Appendix A4, and other physical processes are in Appendix A5. We also describe the consideration of numerical stability in determining discretization schemes in Appendix B, and the validity of the dynamical core in Appendix C. Symbols used in this paper are summarized in Table 1.

2.1 Dynamics

Since the purpose of this study is to clarify the impact of the grid aspect ratio on the turbulent aspects, the influences of the approximations to the governing equations should be reduced as much as possible. For this reason, we employ the set of fully compressible non-hydrostatic equations as the governing equations. The three-dimensional momentum (ρu , ρv , and ρw , for the x , y , and z directions, respectively), total density (ρ), mass-weighted potential temperature ($\rho\theta$), and mass concentration of tracers ($\rho q_x; x \in \{v, l, s\}$) are used as the prognostic variables. See Appendix A1 for the detailed formulation of the governing equations.

The central difference schemes are used for spatial discretization; the second-order scheme is applied to the pressure gradient terms in the momentum equations and divergence terms of mass flux in the continuity equation, while the fourth-order scheme is applied to the advection terms in the momentum and thermodynamics equations. The reason the advection terms are discretized by the high-order scheme is based on the accuracy of the eddy viscosity and the diffusion terms representing effect of SGS turbulence. The coefficients of the viscosity and diffusion terms are proportional to the square of the grid spacing, so that the magnitude of the terms would be comparable to the truncation error of the advection terms, in terms of order of accuracy, if the second-order scheme is employed. Additionally, the ~~higher-order~~ higher-order treatment for the advection terms is necessary from ~~the~~ a different viewpoint as well. Since the advective term is a non-linear convolution ~~and, as such, it requires higher-order.~~ it requires a higher-order treatment to resolve ~~the~~ the additional modes. The use of the ~~lower-order~~ lower-order scheme is justified by the scale-separation of the fast modes (acoustic and fast gravity waves) and slow modes (advection). In the meteorological phenomena, the terms of the pressure gradient in the momentum equations and the divergence in the continuity equation ~~is~~ are dominant for the fast modes, while the advection term is dominant for the slow modes. The interaction between the fast and slow modes is not significant generally. If we consider ~~the~~ the SGS mixing in a local field such as ~~several grids~~ a several-grid scale, the fast waves would pass over this field soon before completing the SGS mixing. This means that ~~the~~ the fast waves do not ~~participates~~ participate much in the local mixing ~~so much~~, compared with the mixing process itself.

The even-order schemes require the explicit numerical filter for numerical stability. However, they have the advantage that it is easier to evaluate the effect of the numerical diffusivity using the explicit numerical filter than that introduced implicitly by an odd-order scheme. See Appendices A3 and A4 for details of the discretization and a discussion of the numerical filter, respectively.

A fully explicit scheme, i.e., HE-VE (horizontally explicit and vertically explicit) scheme, is used
 135 for temporal integration in this study. This scheme generally has less implicit numerical diffusion
 than implicit schemes such as HI-VI (horizontally implicit and vertically implicit) and HE-VI (hori-
 zontally explicit and vertically implicit) schemes. To focus on the influences of the grid aspect ratio,
 an explicit scheme is more suitable than implicit schemes. Additionally, we do not use a time-split
 140 scheme to avoid numerical damping of the time-splitting. See Appendix A2 for a detailed description
 of the temporal scheme used in this study.

In order to validate the dynamical core of this model, we performed a density current experiment
 (Straka et al., 1993) as a standard test case. The detailed results are described in Appendix C; we
 posit that the dynamical core of the model shows reasonable performance, and is reliable enough
 for the investigations performed in this study. As well as validating the dynamical core, Sato et al.
 145 (2014) validated this model from the viewpoint of moist physical processes.

2.2 Sub-grid model

2.2.1 Overview of LES modeling

The model for effect of SGS turbulence used in this model is a Smagorinsky–Lilly-type model
 (Smagorinsky, 1963; Lilly, 1962). In the governing equations shown in Appendix A1, the effect of
 150 the SGS turbulence can be written as $\frac{\partial \rho \tau_{ij}}{\partial x_j}$ in the momentum equations, and $\frac{\partial \rho \tau_i^*}{\partial x_i}$ in the thermody-
 namics and tracer equations. In this subsection, the subscripts imply summation over the set $\{1, 2, 3\}$.
 The τ_{ij} and τ_i^* are parameterized as

$$\tau_{ij} = -2\nu_{\text{SGS}} \left(S_{ij} - \frac{1}{3} S_{kk} \delta_{ij} \right) + \frac{2}{3} \text{TKE}_{\text{SGS}} \delta_{ij}, \quad (1)$$

$$\tau_i^* = -\nu_{\text{SGS}}^* \frac{\partial \phi}{\partial x_i}, \quad (2)$$

155 where ν_{SGS} and ν_{SGS}^* are the coefficients of the SGS eddy viscosity and diffusion, respectively, δ_{ij} is
 the Kronecker delta, and ϕ represents scalar quantities such as θ and q_x . S is the strain tensor given
 by

$$S_{ij} = \frac{1}{2} \left(\frac{\partial u_i}{\partial x_j} + \frac{\partial u_j}{\partial x_i} \right). \quad (3)$$

TKE_{SGS} is the turbulence kinetic energy (TKE) of the SGS turbulence:

$$160 \text{TKE}_{\text{SGS}} = \frac{1}{2} \tau_{ii}. \quad (4)$$

The second term ~~of right hand on the right-hand~~ side of Eq. (1) ~~is arose according to~~ arose because
of the consistency with Eq. (4) in the compressive flow (e.g., Moin et al., 1991).

The role of the sub-grid model is to parameterize the effect of SGS turbulence based on the energy
 cascade theory of three-dimensional isotropic turbulence. The eddy viscosity and diffusion model is
 165 employed as a sub-grid model to represent the effect. For the determination of the amount of the

energy cascade, the mixing length of the eddy viscosity and diffusion is the most important factor. The coefficient of the SGS eddy viscosity, ν_{SGS} in Eq. (1), is proportional to the square of the mixing length (L_{mix}) in Prandtl's mixing length theory;

$$\nu_{\text{SGS}} = L_{\text{mix}}^2 |S|. \quad (5)$$

170 The mixing length depends on what type of spatial filter we employ on the variables in the equations, and the length scale of the spatial filter is the essential factor for the mixing length. The spatial filtering is inevitable in the discretization of the equations. The spatial filter in a numerical model is implicitly determined by the grid spacing and discretization schemes. The artificial length characterizing the spatial filter owing to discretization is defined as the filter length. Besides the filter length, 175 the shape of the grid should be also considered in the mixing length determination. Its effect can be represented by the grid aspect ratio. Scotti et al. (1993) proposed an equation for the effect of the grid aspect ratio on the mixing length. Using the filter length Δ and grid aspect ratio a , the mixing length can be represented as

$$L_{\text{mix}} = C_s f(a) \Delta F_S, \quad (6)$$

180 where $f(a)$ is a function of the grid aspect ratio, and represents the effect of the grid aspect ratio on the mixing length. C_s is the Smagorinsky constant, and F_S represents the effect of static stability.

The effect of the static stability on the mixing length is introduced in this model according to Brown et al. (1994). They extended the Lilly model to improve the performance of the simulation by considering the dependency of the Prandtl number, $\text{Pr} = \nu_{\text{SGS}}/\nu_{\text{SGS}}^*$. For the unstable condition

185 ($\text{Ri} < 0$),

$$\nu_{\text{SGS}} = (C_s f(a) \Delta)^2 |S| \sqrt{1 - c\text{Ri}}, \quad (7)$$

$$\text{Pr} = \text{Pr}_N \sqrt{\frac{1 - c\text{Ri}}{1 - b\text{Ri}}}, \quad (8)$$

where Ri is the local (pointwise) gradient Richardson number, defined as

$$\text{Ri} = \frac{N^2}{|S|^2}. \quad (9)$$

190 Pr_N is the Prandtl number in neutral conditions; $\text{Pr}_N = 0.7$. The constants c and b are 16 and 40, respectively, following Brown et al. (1994). They are empirically given to fit surface-layer observations. For the weakly stable condition, where Ri is smaller than the critical Richardson number Ri_c ($= 0.25$), i.e., $0 \leq \text{Ri} < \text{Ri}_c$,

$$\nu_{\text{SGS}} = (C_s f(a) \Delta)^2 |S| \left(1 - \frac{\text{Ri}}{\text{Ri}_c}\right)^4, \quad (10)$$

$$195 \text{Pr} = \text{Pr}_N \left\{1 - (1 - \text{Pr}_N) \frac{\text{Ri}}{\text{Ri}_c}\right\}^{-1}. \quad (11)$$

For the strongly stable condition ($Ri \geq Ri_c$),

$$\nu_{SGS} = 0, \tag{12}$$

$$Pr = 1. \tag{13}$$

The TKE_{SGS} in Eq. (1) is

$$200 \quad TKE_{SGS} = \left(\frac{\nu_{SGS}}{C_k \Delta} \right)^2, \tag{14}$$

where C_k is ~~a~~an SGS constant and assumed to be 0.1, following Deardorff (1980) and Moeng and Wyngaard (1988).

2.2.2 Problems of filter length and grid aspect ratio

205 There are two ambiguous factors in the configuration for determining the mixing length in recent meteorological LES models. One problem is the configuration of the filter length in Eq. (6) in the models. The value of Δ is usually set as the grid spacing for simplicity, not by considering the numerical filter inherited by an individual model scheme. The other problem is that the effect of the grid aspect ratio on the mixing length is not considered in determining the mixing length; correspondingly, $f(a) = 1$ in Eq. (6).

210 Such rough treatment of the filter length and no consideration of the grid aspect ratio lead incorrect turbulent properties. A usual remedy to such effects is a posteriori tuning of the Smagorinsky constant, C_s in Eq. (6), so as to reproduce realistic results (e.g., Deardorff, 1971). However, this constant should not, in principle, be determined empirically, but should be derived from the theory. ~~There are procedures which derive the constant dynamically~~Some procedures, called dynamic SGS models ~~(e.g., Germano et al., 1991). They have advantage where the~~, derive the constant dynamically ~~(e.g., Germano et al., 1991). They are advantageous in the case in which the~~ assumption of the isotropic turbulence is not justified, e.g., very close to a boundary. However, in our opinion, ~~there are dynamic SGS models are associated with~~ some practical problems, e.g., numerical stability, ~~and,~~ ~~;~~ more importantly, they seem to be ~~sort a type~~ of a mathematical procedure and ~~seem not to be on do~~ not seem to have a physical basis.

220 Here, we should note that each theory is based on its own basic concepts. Although this means that different theoretical concepts lead to different values for the constants, we should keep in mind that a certain constant is uniquely determined by a particular model on theoretical basis. The Smagorinsky constant is derived by integration of the kinetic energy filtered out by the spatial filter. If the cutoff filter is employed as the spatial filter, the integration can be performed in the cubic B in Fourier space:

$$B = \{|k_x| < \pi/\Delta x, |k_y| < \pi/\Delta y, |k_z| < \pi/\Delta z\}, \tag{15}$$

where k_i is the wavenumber in the i -direction. Lilly (1967) obtained the constant ($C_s = 0.16$) by integrating in the sphere inscribed in the cubic B , while Scotti et al. (1993) obtained it more precisely
 230 by integrating in the entire cubic. In this study, we follow Scotti et al. (1993), and use $C_s = 0.13$.

Let us return to the first problem, i.e., the determination of the spatial filter length Δ . Most models in previous studies assume that the filter length is determined as the geometric mean of the grid spacings in the three directions (e.g., Deardorff, 1980):

$$\Delta = (\Delta x \Delta y \Delta z)^{1/3}. \quad (16)$$

235 It is generally difficult to strictly define the spatial filter in a model because the filtering effect implicitly introduced by discretization is very complicated. This difficulty is especially significant if we apply the implicit method of time integration. On the other hand, the effect of the explicitly introduced numerical filter can be more easily estimated than that of an implicitly introduced filter. In our model, we introduce hyperviscosity and diffusion explicitly as the numerical filter (see
 240 Appendix A4). The explicit numerical filter is thought to be the dominant spatial filter because we employ the explicit temporal integration method and even-order spatial difference scheme. This type of filter removes the two-grid scale noise selectively. In other words, the two-grid scale variability is filtered out from the resolved variability. Consequently, we can say that in our model, the two-grid scale is preferred as the filter length rather than the grid spacing defined in Eq. (16):

$$245 \quad \Delta = 2(\Delta x \Delta y \Delta z)^{1/3}. \quad (17)$$

In the next section, we investigate the validity of this configuration using simulation results.

The second problem is the treatment of the grid aspect ratio in LES in actual grid systems. In the equilibrium condition with the universal Kolmogorov spectrum, the energy flux cascaded into the SGS variability is equal to the SGS dissipation. Since the dissipation does not depend on the artificial
 250 grid configuration but on the physical configuration, energy cascaded to the SGS turbulence should not depend on grid configuration, including the grid aspect ratio. The energy cascade flux, which is equal to the dissipation, can be written as a function of the strain tensor S_{ij} defined in Eq. (3) and the mixing length in Eq. (6) in Smagorinsky-type models. S_{ij} depends on the grid configuration, including aspect ratio. The mixing length should be thus dependent on the aspect ratio to cancel out
 255 the dependency of S_{ij} on the aspect ratio, otherwise the energy cascade flux and dissipation should be dependent on the grid configuration. Scotti et al. (1993) derived an approximate function of the $f(a)$ in Eq. (6), considering the grid aspect ratio theoretically by integrating the energy in the cubic B defined in Eq. (15);

$$260 \quad f(a) = 1.736a^{1/3} \left\{ 4P_1(b_1)a^{1/3} + 0.222P_2(b_1)a^{-5/3} + 0.077P_3(b_1)a^{-11/3} \right. \\ \left. - 3b_1 + 4P_1(b_2) + 0.222P_2(b_2) + 0.077P_3(b_2) - 3b_2 \right\}^{-3/4}, \quad (18)$$

where $b_1 = \arctan(1/a)$, $b_2 = \arctan(a) = \pi/2 - b_1$, and

$$P_1(z) = 2.5P_2(z) - 1.5(\cos(z))^{2/3} \sin(z), \quad (19)$$

$$P_2(z) = 0.98z + 0.073z^2 - 0.418z^3 + 0.120z^4, \quad (20)$$

$$P_3(z) = 0.976z + 0.188z^2 + 1.169z^3 + 0.755z^4 - 0.151z^5. \quad (21)$$

265 Note that they considered two grid aspect ratios, while here we consider only one for simplicity, i.e.,
 $\Delta x = \Delta y > \Delta z$. Note that $f(a)$ is a monotonic function for a , for instance, $f(2) = 1.036$, $f(5) =$
 1.231 , $f(10) = 1.469$, and $f(20) = 1.790$. Roughly speaking, there can exist larger scale (or lower
wavenumber) variability in filtered out variabilities for a larger grid aspect ratio. This implies larger
turbulence kinetic energy for larger aspect ratios, and larger TKE results in a larger mixing length.
270 In our study, the effect of the grid aspect ratio on the mixing length is introduced in Eq. (18) by
following Scotti et al. (1993).

3 Numerical experiments

We performed three PBL experiments to examine the influences of the grid aspect ratio and filter
length on simulated turbulence, which are summarized in Table 2. In the control experiment, the
275 filter length is double the grid spacing, as in Eq. (17), and the mixing length in the sub-grid model is
modified by the grid aspect ratio, as in Eq. (18). The second experiment is a small filter length exper-
iment in which the filter length is set as in Eq. (16). The last is a fixed mixing length experiment, in
which the mixing length in the SGS model is not modified by the grid aspect ratio, that is, $f(a) = 1$.
In the most current meteorological simulations, the configuration of the filter length follows Eq. (16)
280 and $f(a) = 1$ in Eq. (6).

In the three experiments above, a systematic parameter sweep of resolution and grid aspect ratios
was conducted. The spatial resolution of each run performed in the control experiment is shown in
Table 3. The parameter set in the small filter length experiment is the same as the control experiment,
except for the 5mAR10 and 5mAR20 runs, while in the fixed mixing length experiment it is the same
285 as the control, except for the 10mAR3 run.

In all the runs, the domain size is $9.6 \text{ km} \times 9.6 \text{ km}$ in the horizontal direction, and 3 km in the
vertical. The domain size is large enough to contain convective cells in the PBL. The lateral boundary
conditions are double periodic. The vertical grid is stretched above 2 km . In the stretching layer, the
vertical velocity is damped by Rayleigh damping with an e-folding time of 10 s to reduce the effect
290 of the reflection of waves at the top boundary.

For the initial condition, we follow Ito et al. (2010); the potential temperature is 299 K at the
surface, with a vertical gradient of -4 K km^{-1} and a random small perturbation of 0.1 K . A constant
horizontal velocity of 5 m s^{-1} is set in the x direction in the entire domain.

The temporal integration is done for four hours for each run. In order to focus on our purpose,
295 we simplify the setting of the bottom boundary condition so that a constant heat flux of 200 W m^{-2}
is added to the lowest layer through the integration, although Ito et al. (2010) added a heat flux
with a sinusoidal temporal change to represent diurnal change. With a constant flow of 5 m s^{-1} and
a ground heat flux of 200 W m^{-2} , we expect the cellular convection to develop according to Ito et al.
(2010). In this study, we consider dry conditions without moist and radiation processes.

300 Different temporal intervals are used for the dynamical and physical processes. We define the
dynamical process as that related to ~~the~~ fluid dynamics; the advection, pressure gradient, and grav-
itational force terms in the governing equations are treated as ~~the dynamical process~~ dynamical
processes in this model. The other processes are ~~the physical process~~ physical processes in this
model. In this study, the physical processes are only the surface flux for the momentum and the eddy
305 viscosity and diffusion for SGS turbulence. Note that we treat the eddy viscosity and diffusion terms,
which ~~is~~ originated from the advection term, as the physical process for ~~the~~ correspondence with the
sub-grid turbulence model in RANS mode in this model. The intervals for the dynamical process
 Δt_{dyn} are 0.006, 0.012, and 0.03 s for $\Delta z = 5, 10,$ and 30 m, respectively. The interval for the physi-
cal processes Δt_{phys} is ten times Δt_{dyn} to reduce computational resource. One concern is that use of
310 too large a factor of $\Delta t_{\text{phys}}/\Delta t_{\text{dyn}}$ has the non-negligible effect of an artificial acoustic wave excited
by intermittent forcing added by the physical processes. In this model, the artificial wave can be
reduced as described in Appendix A2.2. In a preliminary experiment, we confirmed that simulated
phenomena in the runs with $\Delta t_{\text{phys}} = \Delta t_{\text{dyn}}$ and $\Delta t_{\text{phys}} = 10\Delta t_{\text{dyn}}$ do not have essential differences
in the context of this study.

315 We used an eighth-order numerical filter, i.e., $n = 8$ in Eq. (A125), with the non-dimensional
coefficient γ of 2×10^{-4} in this study. The higher order is preferred in order to limit the numerical
filter to smaller scale variability, but the higher-order filter requires more expensive computational
costs. As discussed in Appendix A4, we confirmed that the effect of the numerical filter of order
eight is less than that of the eddy diffusion and viscosity. The smaller coefficient γ is preferred as
320 long as two-grid scale noise is prevented. The coefficient was determined by another preliminary
parameter sweep experiment of the coefficient without the SGS model for the numerical filter to
prevent two-grid noise.

4 Results and discussions

4.1 Energy spectrum

325 Most sub-grid models are based on the idea of an energy cascade due to three-dimensional isotropic
turbulence so that the energy spectrum has the slope of $k^{-5/3}$, where k is the wavenumber. Fig-
ure 1a shows the horizontal spectrum of the three-dimensional kinetic energy at an altitude of 500 m
in the control experiment. This height corresponds to the middle of the PBL, at which the verti-

cal velocity is largest. The inertial sub-range with $-5/3$ power can be clearly seen at wavenum-
330 bers greater than $1/1000 \text{ m}^{-1}$. The spectra for runs with various resolutions and grid aspect ratios
show good agreement with one another, except near the filter length scale, at which variabilities are
damped numerically. The largest energy appears at a scale of about 2 km; the external forcing seems
to mainly inject energy at this scale. This corresponds to the spatial structure of convective cells, as
shown in Fig. 3a. The cells have well-known hexagonal or quadrangular structure with strong up-
335 ward convection in the narrow cell boundary, and relatively weak downward convection in the entire
cell region.

On the other hand, the spectrum of horizontal kinetic energy $u^2 + v^2/2$ does not clearly indicate
the power law as shown in Fig. 2. Horizontal vortexes (i.e., convections) are strongly constrained by
the PBL top and bottom boundaries. The horizontal velocity related to convection is dominant near
340 the top and bottom of the convection, while it is relatively small near the middle of the convection.
As a result, the horizontal kinetic energy of large scale motion tends to be smaller around the middle
of the PBL. On the other hand, the vertical velocity is dominant in the middle of the convection, and
the energy spectrum of vertical kinetic energy ~~is mostly~~ mostly follows the power law, as shown in
Fig. 2. This difference between vertical and horizontal velocity is more significant for larger scale
345 motion. This is almost opposite for horizontal and vertical velocities near the PBL top and bottom
boundaries; the spectrum of the horizontal velocity at the lowest layer shows a slope of almost $-5/3$,
while that of the vertical velocity does not. These differences, due to the existence of the PBL top and
bottom boundaries, cause anisotropy as well as static stability (Yakhot et al., 1989; Horiuti, 1993).

In most LES models, the filter length for the sub-grid model is set to be equal to the grid spacing
350 itself. In our model, the filter length is set to be twice the grid spacing, as described in Sect. 2. In
order to examine the influence of the filter length, we performed the small filter length experiment, in
which we use a conventional filter length, i.e., as in Eq. (16). Figure 1b shows the energy spectrum in
this experiment (only runs with $\Delta z = 10 \text{ m}$ are shown). The spectra show a spurious energy profile,
in which energy piles up at the higher wavenumbers. The slopes of the spectra become gentler than
355 $-5/3$ because of the spurious energy. The spurious energy piling is considered to be a result of
the lack of energy cascade because of SGS variability, caused by the use of a small mixing length.
We found that the situation is more significant for larger grid aspect ratios and coarser horizontal
resolution, as shown Fig. 1b, although the effect of the grid aspect ratio represented by Eq. (18) is
taken into account in this experiment, as well as in the control experiment.

360 The deviation from the theoretical $-5/3$ slope of the energy spectrum of ~~the~~-resolved variability
is more obvious at the energy-dissipative range. However, the reduced energy is compensated by the
SGS energy. On the other hand, the energy pile cannot be compensated by any SGS components.
Therefore, the spurious energy pile is the most important point in terms of the reproducibility of the
spectrum. In order to estimate the degree of the energy piling quantitatively, we introduce an index

365 denoted by SEP:

$$\text{SEP} \equiv \max \left(\frac{E(k)}{Ak^{-5/3}} \right), \quad (22)$$

where $E(k)$ is the energy spectrum in each run, and the fitting coefficient A is calculated with a spectrum ranging from $1/1000$ to $1/100 \text{ m}^{-1}$ using the highest resolution run with a grid aspect ratio of unity (10mAR1 run) in the control experiment as a reference solution. Thus, SEP indicates
370 the maximum ratio of the energy spectrum in each run to the fitting slope of $-5/3$ power in the reference run. Note that the index is not influenced by the lower energy than the theoretical slope at the energy-containing and ~~dissipative-energy-dissipative~~ scales. Figure 4 shows the dependency of the SEP index on the grid aspect ratio. Since the energy spectrum is not perfectly a power law with the $-5/3$ slope, the index is not one, even in the 10mAR1 run. The index in the control experiment
375 is smaller than 1.2 for all the runs. On the other hand, the indices in the small filter length experiment are larger than those in the control experiment. It tends to be larger for the larger aspect ratio. This tendency can be found ~~both-for-for both~~ the vertical grid ~~resolution-resolutions~~ of 10 and 30 m. The magnitude of the SEP is larger than 1.2 for all the runs, except when the grid aspect ratio is unity. This shows that, in this model, twice the grid spacing is more suitable as the filter length rather than
380 the grid spacing itself, and suggests that the filter length should be chosen according to the numerical schemes used in a model. In addition, the dependency on the grid aspect ratio can clearly be seen. These results suggest that an appropriate filter length is necessary, especially in the case of a large grid aspect ratio.

Next, we consider the influence of $f(a)$ in the mixing length, as in Eq. (6), on the spectrum. The
385 mixing length is modified by the grid aspect ratio in the control experiment according to Scotti et al. (1993), as described in Sect. 2. In the fixed mixing length experiment, we fixed $f(a)$ in Eq. (6) equal to one in order to ignore the effect of the grid aspect ratio. Figure 1c shows the spectra of the runs in the fixed mixing length experiment; only runs with larger grid aspect ratios are shown. The spectra for the large aspect ratio, especially greater than ten, show the spurious energy pile, as in the case
390 of the small filter length experiment. The SEP index is greater than 1.3 in these cases, as shown in Fig. 4. This means that the effect of the grid aspect ratio should be taken into account in modeling the mixing length for the SGS turbulence model. The mixing length should be enlarged according to the effect of the grid aspect ratio from that of the isotropic grid case, otherwise artificial energy piles at higher wavenumbers.

395 In all the ~~experimentexperiments~~, the magnitude of the SEP tends to be smaller for the ~~larger vertical-larger-vertical~~ resolution. This tendency is more apparent for ~~larger-aspect-the larger-aspect~~ ratio. It is possible that ~~amount-of-the-the amount of~~ energy dissipation depends on the grid configuration, although it should be identical. The larger dissipation could ~~results-in-the-result in~~ smaller total energy and ~~consequent-consequently a~~ smaller SEP in the coarser resolution runs.

400 4.2 Turbulence statistics

In this subsection, we show the influence of the grid configuration of the runs on the turbulence statistics in the PBL in the control experiment. Figure 5 shows the dependency of the vertical profiles of several turbulence statistics on the spatial resolution and grid aspect ratio in the control experiment: the horizontal mean potential temperature, the vertical heat flux, the variance of the vertical velocity, and the skewness of the vertical velocity. These values are averaged over the last half hour ($t = 3.5\text{--}4\text{ h}$). The change of in the 30-min averaged kinetic energy at the 500 m in $t = 3\text{--}3.5\text{ h}$ to that in $t = 3.5\text{--}4\text{ h}$ is small enough: just only 3.4%. Consequently, we assume that the state in the last half hour is appropriate enough for the analysis. In the calculation of these values, the horizontal mean is defined as the mass weighted average, $\frac{\overline{\rho\phi}}{\bar{\rho}}$, where the over-line represents the mathematical horizontal average. These profiles are calculated from the resolved variability, except for the heat flux.

Figure 5a gives the vertical profile of the potential temperature for all the runs. The potential temperature is almost uniform, and the atmosphere is well mixed in the PBL below 1.2 km height; the difference is about 0.05 K. On the other hand, the profile in the surface layer indicates some difference according to the resolution and grid aspect ratio. Here, we define the surface layer as the layer that keeps the potential temperature gradient less than -10^{-3} K m^{-1} . The conclusions in this paragraph do not change qualitatively for a range of the threshold qualitatively. In the 10mAR1 run, this steep potential temperature gradient is reproduced in the unstable surface layer below 75 m depth. Figure 6a shows the dependency of the depth of the surface layer on the horizontal resolution. We found that the depth becomes larger for coarser horizontal resolution, even if the vertical resolution is higher. Typically, in the 5mAR20 run, the depth of the surface layer is about 140 m. The variance of the resolved variability is smaller in the 5mAR20 run than in the 10mAR1 run, as shown in Fig. 7, and then strength of the the strength of mixing by the resolved motion is not cause of the a cause of this tendency. Figure 7 shows that the potential temperature and the variance of the horizontal velocity have similar vertical profile profiles against $z=z/\Delta$ in terms of the vertical gradient. This suggests that the vertical gradient of the profile in the surface layer is determined by the filter length.

Figure 5b shows the profile of the vertical heat flux, which is here defined as the sum of the resolved flux, $\overline{\rho w'\theta'}/\bar{\rho}$, and the SGS flux. Note that the prime represents deviation from the horizontal mean. We define the top boundary of the PBL as the height of minimum heat flux. In all the runs, the PBL height of 1.25 km and the heat flux profile are almost the same. The flux profile indicates a linear distribution in the z direction, and this means that the heating rate is constant in the PBL. Its slope is about 0.18 W m^{-3} , corresponding to a heating rate of about 0.6 K h^{-1} . This value is consistent with the sensible heat flux from the bottom boundary (200 W m^{-2}) divided by the depth of the region where the heat flux is positive (about 1.1 km). We can conclude that the total vertical heat flux is reasonably reproduced regardless of grid configuration.

The variance of the vertical velocity is shown in Fig. 5c. The variance is the largest around 500 m height in all the runs. It is 1.75 and 1.4 m² s⁻² at a height of 500 m ~~height in the highest and lowest resolution in the highest- and lowest-resolution~~ runs (10mAR1 and 30mAR5), respectively. Figure 6b shows how the grid configuration affects the variance of vertical velocity. It is found that
 440 the variance of the vertical velocity mainly depends on the horizontal resolution; as the horizontal grid spacing decreases, the variance of the vertical velocity increases, and their correlation is about -0.98 . On the other hand, significant dependency of the variance of the vertical velocity on the vertical resolution and grid aspect ratio is not seen; their correlations are -0.21 and -0.56 , respectively.

Theoretically, the variance of vertical velocity should converge to a certain value with grid refinement for the following reason. The variance is approximately equal to the sum of squares of each
 445 wavenumber component as

$$\text{Var}_w \approx \sum_{k=1}^{k_{\max}} |\hat{w}(k)|^2, \quad (23)$$

where k_{\max} and $\hat{w}(k)$ are the maximum horizontal wavenumber and amplitude of the vertical velocity of wavenumber k , respectively. Note that here we ignore the density variability for simplicity.
 450 Under the condition that the energy spectrum $|\hat{w}|^2$ has an exponential decay of $k^{-5/3}$, the accumulated energy, which is equal to half of the variance, can be obtained analytically as

$$\int_{k_0}^{k_{\max}} A k^{-5/3} dk = B - \frac{3}{2} A k_{\max}^{-2/3}, \quad (24)$$

where A and B are constants. Nevertheless, as shown in Fig. 6b, the variance has not yet converged in the range of resolutions. The convergence point is still a debatable issue at higher resolutions. Here,
 455 we try to estimate the convergence point. We estimate the total energy for $k_{\max} = \infty$ from ~~on~~ Eq. 24 in the 10mAR1 run, and it is 104% of the observed total energy in the simulation. This suggests that the convergence point of the variance would be about 1.82 m² s⁻², i.e., 104% of 1.75 m² s⁻².

The profile of skewness shows an almost linear slope in the PBL except near the surface, as shown in Fig. 5d. The skewness has a similar value around 500 m height for all the runs, while it
 460 shows variety around the top and bottom of the PBL. Positive skewness implies stronger upward motion compared to downward motion. Around the top boundary, the hexagonal or quadrangular cell structure of convection seen around the middle of the layer in Fig. 3a is no longer dominant, as Fig. 3b shows. There are strong upward plumes surrounded by compensating annular downward flow, whose horizontal scale is about 1–2 km. Most of the plumes are located above the cell vertex
 465 at lower height. Figure 6c shows the dependency of the skewness on the horizontal resolution at 1.2 km height (top of the PBL). The skewness is larger for coarser resolution. The logarithmic values of skewness and horizontal resolution have a mostly linear relationship. Sullivan and Patton (2011) tried to explain the dependency of the skewness on the horizontal resolution by the SGS moment, but they showed that its effect is quantitatively not sufficient to explain the difference. We suppose

470 that localized strong upward plumes due to the larger eddy viscosity is a possible cause of the larger skewness based on the following explanation. Coarser resolution corresponds to larger filter length and consequently, larger eddy viscosity. The larger viscosity prevents small scale motions. However, the amount of heat transferred vertically should be almost the same as in other runs, because static instability becomes strong if the vertical heat flux is smaller because motion is prevented. In fact, the
475 horizontal mean vertical heat flux is almost identical in all the runs (Fig. 5b). Individual convective plumes in coarser resolution runs could be stronger, transferring more heat than in higher resolution runs. It is possible that such localized stronger upward plumes are the cause of the larger skewness in coarser resolution runs.

Residuals from logarithmic linear regression of the skewness in the horizontal resolution are relatively larger for coarser horizontal resolution: e.g., the 5mAR20 (cyan square) and the 30mAR5
480 (green circle) runs. Dependency of the skewness on the grid aspect ratio is one of the reasons for the residuals. The dependency on the aspect ratio can be seen in Fig. 6d. The skewness tends to be larger for larger aspect ratios. Positive residuals from the 5mAR20 run and negative ones from the 30mAR5 run in the regression would be due to large and small aspect ratios, respectively. Also, the
485 skewness of the 5mAR20 run is larger than that of the 10mAR10 run (blue \times symbol) at the same horizontal resolutions (100 m). Their difference could be due to the difference in aspect ratio. The skewness in the 10mAR10 run is closer to that of the 10mAR1 run (black \times symbol), than that of the 5mAR20 run, even if the vertical resolution is higher in the 5mAR20 run than in the 10mAR10 run. This suggests that a large aspect ratio produces spurious large skewness in vertical velocity, that is,
490 artificially strong upwind. The dependence on the grid aspect ratio seems somewhat complex, and the reason for the dependence is not clear. We assume that it is related to static stability. For higher grid aspect ratios, i.e., relatively higher vertical resolution or lower horizontal resolution, static stability could vary vertically rather than horizontally. In that case, a strong shallow stable layer could cover a relatively wider region horizontally, and strong static stability and small horizontal contrast
495 might prevent vertical motion and suppress the vertical eddy viscosity and diffusion. Under this condition, only a strong parcel can go upward against the thin strong stable layer. For the same amount of vertical heat transportation independent of grid configuration, a larger grid aspect ratio might require stronger upwind, indicating larger skewness.

5 Conclusions

500 We conducted a series of planetary boundary layer experiments to examine the influences of the aspect ratio of horizontal to vertical grid spacing on the atmospheric turbulence in a large-eddy simulation. In order to focus on the influences, we tried to avoid artificial effects as much as possible by employing the fully compressible governing equations. A fully explicit (i.e., HE-VE) temporal

integration scheme and a high-order central difference scheme for spatial differentials are adopted
505 to reduce implicitly introduced numerical viscosity and diffusion by discretization.

In the model used in this paper, we considered the effect of spatial filter length and grid aspect
ratio on the mixing length of the eddy viscosity and diffusion, which is a parameterization of the
energy cascade to SGS variability. Explicit numerical hyperviscosity and diffusion is introduced to
reduce the two-grid scale noise in this model. This can be considered a spatial filter in LES. As
510 a result, the filter length in this model is double the grid spacing, while the grid spacing is used as
the length in most LESs. The effect of the grid aspect ratio on the mixing length proposed by Scotti
et al. (1993) was also introduced.

If we use a reasonable filter length and introduce the grid aspect ratio effect, the energy spectra
of all the runs show good correspondence with the theoretical $k^{-5/3}$ slope, regardless of spatial
515 resolution and grid aspect ratio. On the other hand, the theoretical slope in the spectrum is no longer
obtained, and a spurious energy pile is found if the spatial filter length is set to be equal to the grid
spacing as in most meteorological LESs. The spurious energy piling is more significant for larger
grid aspect ratios. A shorter filter length results in a shorter mixing length and consequently, a smaller
energy cascade to SGS variability. Thus, an inappropriate filter length causes spurious energy.

520 The effect of the grid aspect ratio on the mixing length of the eddy viscosity and diffusion cannot
be ignored. If the mixing length is not modified by the grid aspect ratio, spurious energy also piles at
higher wavenumbers because of an insufficient energy cascade to SGS turbulence at large grid aspect
ratios. In previous studies, the Smagorinsky constant was often modified as a tuning parameter to
obtain the expected energy spectrum. However, the constant should be determined theoretically and
525 should not be tuned to make the energy cascade large instead of considering filter length and grid
aspect ratio.

The horizontal resolution and grid aspect ratio also influence the turbulence statistics. The vertical
profiles of several turbulence statistics depend on the grid configuration as follows. The depth of
the unstable surface layer is larger for coarser horizontal resolution (but not vertical resolution). The
530 variance of the resolved vertical velocity essentially depends on the horizontal resolution, mainly be-
cause of spatial averaging by discretization. The skewness of the vertical velocity shows dependency
on grid aspect ratio as well as on horizontal resolution. In particular, the skewness is sensitive to the
grid configuration around the top and bottom of the PBL. It becomes larger and smaller around the
top and bottom, respectively, for coarser resolution and larger grid aspect ratio. Higher resolution and
535 smaller grid aspect ratio are required in order to obtain accurate skewness. This is important, because
the spurious strong upward wind near the PBL top, which is implied by larger skewness, would have
a large effect on cloud microphysical processes. For example, the reproducibility of clouds around
the PBL top, such as stratocumulus, would be sensitive to grid configuration.

We conclude that the grid aspect ratio influences the parameterization of the energy cascade to
540 SGS variability and the reproducibility of skewness of turbulence in the PBL. Although there are

many meteorological LESs in which the grid aspect ratio is large, such large grid aspect ratios have led to misinterpretation in some experiments in previous studies because of spurious energy piling at higher wavenumbers and stronger vertical motion indicated by larger skewness. The aspect ratio should be taken into account properly in determining the mixing length of the eddy viscosity and diffusion as a sub-grid model for the reliability of simulations of boundary layer turbulence.

Appendix A: Model description

A1 Governing equations

In this subsection, we introduce the governing equations for the prognostic variables ($\rho, \rho u, \rho v, \rho w, \rho \theta$, and $\rho q_x s$). The gas constant and specific heat are those for total (moist) air in the thermodynamics equation and equation of state. The θ in this model is not the conventional potential temperature for dry air, but the corresponding value for total air, considering water content. These variables are spatially filtered quantities, and the Favre filter (Favre, 1983) is used for u, v, w, θ , and $q_x s$.

A1.1 Continuity equations

The continuity equations for each material can be described in flux form:

$$\frac{\partial \rho q_d}{\partial t} + \nabla \cdot (\rho q_d \mathbf{u}) = \text{DIFF}[q_d], \quad (\text{A1})$$

$$\frac{\partial \rho q_v}{\partial t} + \nabla \cdot (\rho q_v \mathbf{u}) = S_v + \text{DIFF}[q_v], \quad (\text{A2})$$

$$\frac{\partial \rho q_1}{\partial t} + \nabla \cdot (\rho q_1 \mathbf{u}) + \frac{\partial \rho q_1 w_1}{\partial z} = S_1 + \text{DIFF}[q_1], \quad (\text{A3})$$

$$\frac{\partial \rho q_s}{\partial t} + \nabla \cdot (\rho q_s \mathbf{u}) + \frac{\partial \rho q_s w_s}{\partial z} = S_s + \text{DIFF}[q_s], \quad (\text{A4})$$

where ∇ is the gradient vector, and $\text{DIFF}[\phi]$ is the diffusion term by SGS turbulence (see Sect. 2.2).

The sum of the ratios of their mass should be unity:

$$q_d + q_v + q_1 + q_s = 1. \quad (\text{A5})$$

The source terms for water substances should satisfy the following relationship:

$$S_v + S_1 + S_s = 0. \quad (\text{A6})$$

The sum of Eqs. (A1)–(A4) gives the continuity equation of total density:

$$\frac{\partial \rho}{\partial t} + \nabla \cdot (\rho \mathbf{u}) + \frac{\partial \rho q_1 w_1}{\partial z} + \frac{\partial \rho q_s w_s}{\partial z} = 0. \quad (\text{A7})$$

For this derivation, we use the fact that the operator $\text{DIFF}[\phi]$ is a linear operator;

$$\text{DIFF}[\phi] = -\frac{\partial}{\partial x_i} \rho \nu_{\text{SGS}}^* \frac{\partial \phi}{\partial x_i}. \quad (\text{A8})$$

Using Eq. (A5),

$$\begin{aligned}
 570 \quad & \text{DIFF}[q_d] + \text{DIFF}[q_v] + \text{DIFF}[q_l] + \text{DIFF}[q_s] \\
 & = \text{DIFF}[q_d + q_v + q_l + q_s] = \text{DIFF}[1] = 0.
 \end{aligned} \tag{A9}$$

A1.2 Momentum equations

The momentum equations for the gas, liquid, and solid materials are described as

$$\begin{aligned}
 & \frac{\partial \rho(q_d + q_v) \mathbf{u}}{\partial t} + \nabla \cdot [\rho(q_d + q_v) \mathbf{u} \otimes \mathbf{u}] \\
 575 \quad & = -\nabla p - [\rho(q_d + q_v)g + (f_l + f_s)] \mathbf{e}_z + \mathbf{u}S_v + \text{DIFF}[(q_d + q_v)\mathbf{u}],
 \end{aligned} \tag{A10}$$

$$\begin{aligned}
 & \frac{\partial \rho q_l \mathbf{u}}{\partial t} + \nabla \cdot (\rho q_l \mathbf{u} \otimes \mathbf{u}) + \frac{\partial \rho q_l \mathbf{u} w_1}{\partial z} \\
 & = -(\rho q_l g - f_l) \mathbf{e}_z + \mathbf{u}S_l + \text{DIFF}[q_l \mathbf{u}],
 \end{aligned} \tag{A11}$$

$$\begin{aligned}
 & \frac{\partial \rho q_s \mathbf{u}}{\partial t} + \nabla \cdot (\rho q_s \mathbf{u} \otimes \mathbf{u}) + \frac{\partial \rho q_s \mathbf{u} w_s}{\partial z} \\
 & = -(\rho q_s g - f_s) \mathbf{e}_z + \mathbf{u}S_s + \text{DIFF}[q_s \mathbf{u}],
 \end{aligned} \tag{A12}$$

580 where \otimes represents the tensor product. The pressure is derived from the equation of state as

$$p = \rho(q_d R_d + q_v R_v) T. \tag{A13}$$

The sum of Eqs. (A10)–(A12) gives the total momentum equation as

$$\begin{aligned}
 & \frac{\partial \rho \mathbf{u}}{\partial t} + \nabla \cdot (\rho \mathbf{u} \otimes \mathbf{u}) + \left(\frac{\partial \rho q_l w_1}{\partial z} + \frac{\partial \rho q_s w_s}{\partial z} \right) \mathbf{u} \\
 & = -\nabla p - \rho g \mathbf{e}_z + \text{DIFF}[\mathbf{u}].
 \end{aligned} \tag{A14}$$

585 Note that the drag forces from loading do not appear in Eq. (A14), because those ~~term~~ terms are canceled out by the summation.

A1.3 Thermodynamics equations

The equations of internal energies are given as

$$\begin{aligned}
 & \frac{\partial \rho(q_d e_d + q_v e_v)}{\partial t} + \nabla \cdot [\rho(q_d e_d + q_v e_v) \mathbf{u}] \\
 590 \quad & = -p \nabla \cdot \mathbf{u} + Q_d + Q_v + \text{DIFF}[(q_d + q_v)T^*],
 \end{aligned} \tag{A15}$$

$$\frac{\partial \rho q_l e_l}{\partial t} + \nabla \cdot (\rho q_l e_l \mathbf{u}) + \frac{\partial \rho q_l e_l w_1}{\partial z} = Q_l + \text{DIFF}[q_l T^*], \tag{A16}$$

$$\frac{\partial \rho q_s e_s}{\partial t} + \nabla \cdot (\rho q_s e_s \mathbf{u}) + \frac{\partial \rho q_s e_s w_s}{\partial z} = Q_s + \text{DIFF}[q_s T^*], \tag{A17}$$

where e_x are the internal energies, and defined as

$$e_d = c_{vd} T, \tag{A18}$$

$$595 \quad e_v = c_{vv}T, \quad (A19)$$

$$e_l = c_lT, \quad (A20)$$

$$e_s = c_sT. \quad (A21)$$

The DIFF operator represents the mixing by SGS turbulence. The SGS eddy viscosity should be used for conserved quantities following the motion. The internal energies are not conserved quantities in the Lagrangian sense, and the diffusion term in these equations and T^* are only conceptual, and should be determined to be consistent with the diffusion term in an equation for a conserved quantity along the flow trajectory (i.e., potential temperature), which is discussed later.

The sum of Eqs. (A15)–(A17) gives the total internal energy equations:

$$\frac{\partial \rho e}{\partial t} + \nabla \cdot (\rho e \mathbf{u}) + \frac{\partial \rho q_l e_l w_l}{\partial z} + \frac{\partial \rho q_s e_s w_s}{\partial z} + p \nabla \cdot \mathbf{u} = Q + \text{DIFF}[T^*], \quad (A22)$$

605 where

$$e = q_d e_d + q_v e_v + q_l e_l + q_s e_s, \quad (A23)$$

and the total diabatic heating is described as

$$Q = Q_d + Q_v + Q_l + Q_s. \quad (A24)$$

Equations (A2)–(A4), (A7), (A14), and (A22), along with Eq. (A13), form the complete set of equations.

A1.4 Conservation of thermodynamics in the dynamical process

Equation (A22) is not a complete flux form, because the internal energy itself is not conserved both in the Euler sense and the Lagrangian sense. In this section, we consider the conserved quantity for the thermodynamics equation.

615 The potential temperature for dry air, which is defined as

$$\theta_d = T \left(\frac{p_{00}}{p} \right)^{R_d/c_{pd}}, \quad (A25)$$

is used as a conserved quantity in traditional models. Although it is conserved along a Lagrangian trajectory, it is no longer conserved when the water substances are included. We introduce a new conserved quantity following the motion in moist conditions.

620 Using Eqs. (A7) and (A22), without the terms for the sedimentation of water, the diabatic heating and diffusion can be written as

$$\frac{de}{dt} + p \frac{d}{dt} \left(\frac{1}{\rho} \right) = 0. \quad (A26)$$

Substituting Eqs. (A13), (A18)–(A21), and (A23) into Eq. (A26),

$$\frac{dq_d c_{vd} T}{dt} + p \frac{d}{dt} \left[\frac{q_d R_d T}{p} \right] + \frac{dq_v c_{vv} T}{dt} + p \frac{d}{dt} \left[\frac{q_v R_v T}{p} \right]$$

$$625 \quad + \frac{dq_1 c_1 T}{dt} + \frac{dq_s c_s T}{dt} = 0. \quad (\text{A27})$$

From Eqs. (A2)–(A4) and (A7), Eq. (A27) gives the following form:

$$630 \quad q_d \left[\frac{dc_{vd} T}{dt} + p \frac{d}{dt} \left[\frac{R_d T}{p} \right] \right] + q_v \left[\frac{dc_{vv} T}{dt} + p \frac{d}{dt} \left[\frac{R_v T}{p} \right] \right] \\ + q_1 \frac{dc_1 T}{dt} + q_s \frac{dc_s T}{dt} = 0. \quad (\text{A28})$$

Dividing this equation by T ,

$$630 \quad q_d c_{pd} \left[\frac{d \ln T}{dt} + \frac{R_d}{c_{pd}} \frac{d}{dt} \left[\ln \left(\frac{1}{p} \right) \right] \right] \\ + q_v c_{pv} \left[\frac{d \ln T}{dt} + \frac{R_v}{c_{pv}} \frac{d}{dt} \left[\ln \left(\frac{1}{p} \right) \right] \right] \\ + q_1 c_1 \frac{d \ln T}{dt} + q_s c_s \frac{d \ln T}{dt} = 0, \quad (\text{A29})$$

and

$$q_d c_{pd} \frac{d \ln \theta_d}{dt} + q_v c_{pv} \frac{d \ln \theta_v}{dt} + q_1 c_1 \frac{d \ln T}{dt} + q_s c_s \frac{d \ln T}{dt} = 0, \quad (\text{A30})$$

635 where θ_v is the potential temperature for water vapor, defined as

$$\theta_v = T \left(\frac{p_{00}}{p} \right)^{R_v / c_{pv}}. \quad (\text{A31})$$

Thus,

$$\frac{d}{dt} \left[\ln \left(\theta_d^{q_d c_{pd}} \theta_v^{q_v c_{pv}} T^{q_1 c_1} T^{q_s c_s} \right) \right] = 0. \quad (\text{A32})$$

The quantity

$$640 \quad \Theta = \theta_d^{q_d c_{pd}} \theta_v^{q_v c_{pv}} T^{q_1 c_1} T^{q_s c_s} = T^{c_p^*} \left(\frac{p_{00}}{p} \right)^{R^*} \quad (\text{A33})$$

is conserved along the flow trajectory, where

$$c_p^* \equiv q_d c_{pd} + q_v c_{pv} + q_1 c_1 + q_s c_s, \quad (\text{A34})$$

$$R^* \equiv q_d R_d + q_v R_v. \quad (\text{A35})$$

Here we define a new potential temperature

$$645 \quad \theta \equiv \Theta^{1/c_p^*} = T \left(\frac{p_{00}}{p} \right)^{R^*/c_p^*}. \quad (\text{A36})$$

This θ satisfies

$$\frac{d\theta}{dt} = \frac{1}{c_p^*} \Theta^{1/c_p^* - 1} \frac{d\Theta}{dt} = 0, \quad (\text{A37})$$

and θ is a conserved quantity along the flow trajectory, even in moist conditions. We employ $\rho\theta$ for the prognostic variable.

650 The pressure expression is derived diagnostically as:

$$p = p_{00} \left(\frac{\rho\theta R^*}{p_{00}} \right)^{\frac{c_p^*}{c_p^* - R^*}}. \quad (\text{A38})$$

Figure A1a gives the vertical profile of the temperature in the US control atmosphere, and Fig. A1b shows the vertical profiles of θ/θ_d under this temperature condition when we assume that q_v is the specific humidity at saturation, and $q_1 + q_s$ gives 0.0, 0.01, 0.02, and 0.04. The difference between θ and θ_d becomes larger with height and may not be negligible.

A1.5 Diabatic heating in the physical process

Changing the prognostic variable for thermodynamics from the internal energy to the newly defined potential temperature θ should modify the diabatic heating and sedimentation terms in Eq. (A22). Through the manipulation of Eq. (A26) to Eq. (A32), Eq. (A22) can be written as

$$660 \quad \rho T \frac{d \ln \Theta}{dt} = Q - \frac{\partial \rho q_1 e_1 w_1}{\partial z} - \frac{\partial \rho q_s e_s w_s}{\partial z} + \text{DIFF}[T^*]. \quad (\text{A39})$$

Substituting Eq. (A36) into Eq. (A39),

$$\rho \frac{d\theta}{dt} = \frac{1}{c_p^*} \left(\frac{p_{00}}{p} \right)^{\frac{R^*}{c_p^*}} \left(Q - \frac{\partial \rho q_1 e_1 w_1}{\partial z} - \frac{\partial \rho q_s e_s w_s}{\partial z} + \text{DIFF}[T^*] \right). \quad (\text{A40})$$

T^* is the variable defined to satisfy the following equation:

$$\frac{1}{c_p^*} \left(\frac{p_{00}}{p} \right)^{\frac{R^*}{c_p^*}} \text{DIFF}[T^*] = \text{DIFF}[\theta]. \quad (\text{A41})$$

665 A1.6 Summary of governing equations

The governing equations are summarized as follows:

$$\frac{\partial \rho q_v}{\partial t} = -\nabla \cdot (\rho q_v \mathbf{u}) + S_v + \text{DIFF}[q_v], \quad (\text{A42})$$

$$\frac{\partial \rho q_1}{\partial t} = -\nabla \cdot (\rho q_1 \mathbf{u}) - \frac{\partial \rho q_1 w_1}{\partial z} + S_1 + \text{DIFF}[q_1], \quad (\text{A43})$$

$$\frac{\partial \rho q_s}{\partial t} = -\nabla \cdot (\rho q_s \mathbf{u}) - \frac{\partial \rho q_s w_s}{\partial z} + S_s + \text{DIFF}[q_s], \quad (\text{A44})$$

$$670 \quad \frac{\partial \rho}{\partial t} = -\nabla \cdot (\rho \mathbf{u}) - \frac{\partial \rho q_1 w_1}{\partial z} - \frac{\partial \rho q_s w_s}{\partial z}, \quad (\text{A45})$$

$$\frac{\partial \rho \mathbf{u}}{\partial t} = -\nabla \cdot (\rho \mathbf{u} \otimes \mathbf{u}) - \nabla p - \rho g \mathbf{e}_z - \frac{\partial \rho q_1 \mathbf{u} w_1}{\partial z} - \frac{\partial \rho q_s \mathbf{u} w_s}{\partial z} + \text{DIFF}[\mathbf{u}], \quad (\text{A46})$$

$$\begin{aligned} \frac{\partial \rho \theta}{\partial t} &= -\nabla \cdot (\rho \theta \mathbf{u}) \\ &+ \frac{1}{c_p^*} \left(\frac{p_{00}}{p} \right)^{\frac{R^*}{c_p^*}} \left[Q - \frac{\partial \rho q_1 e_1 w_1}{\partial z} - \frac{\partial \rho q_s e_s w_s}{\partial z} \right] \end{aligned}$$

$$+ \text{DIFF}[\theta], \quad (\text{A47})$$

675 where

$$p = p_{00} \left(\frac{\rho \theta R^*}{p_{00}} \right)^{\frac{c_p^*}{c_p^* - R^*}}, \quad (\text{A48})$$

$$c_p^* \equiv q_d c_{pd} + q_v c_{pv} + q_l c_l + q_s c_s, \quad (\text{A49})$$

$$R^* \equiv q_d R_d + q_v R_v. \quad (\text{A50})$$

A1.7 Boundary condition

680 The vertical boundary conditions are that the vertical velocities at the top and bottom boundaries are zero. This causes the vertical flux at the top and bottom boundaries for all the prognostic variables to be zero;

$$w = 0, \quad (\text{A51})$$

$$\rho w = 0, \quad (\text{A52})$$

685 $\rho q_v w = \rho q_l w = \rho q_s w = 0,$ (A53)

$$\rho u w = \rho v w = \rho w w = 0, \quad (\text{A54})$$

$$\rho \theta w = 0, \quad (\text{A55})$$

at the top and bottom boundaries.

A2 Temporal integration scheme

690 We conceptually separate the complete set of governing equations into dynamical and physical parts:

$$\frac{\partial \phi}{\partial t} = \left(\frac{\partial \phi}{\partial t} \right)_{\text{dynamics}} + \left(\frac{\partial \phi}{\partial t} \right)_{\text{physics}}. \quad (\text{A56})$$

The diabatic heating process, diffusion by SGS turbulence, sedimentation process of liquid and solid waters, and the source and sink of water substances are treated as physical processes, and the others are treated as dynamical processes.

695 According to this scheme, the dynamical processes can be written as

$$\frac{\partial \rho q_v}{\partial t} + \nabla \cdot (\rho q_v \mathbf{u}) = 0, \quad (\text{A57})$$

$$\frac{\partial \rho q_l}{\partial t} + \nabla \cdot (\rho q_l \mathbf{u}) = 0, \quad (\text{A58})$$

$$\frac{\partial \rho q_s}{\partial t} + \nabla \cdot (\rho q_s \mathbf{u}) = 0, \quad (\text{A59})$$

$$\frac{\partial \rho}{\partial t} + \nabla \cdot (\rho \mathbf{u}) = 0, \quad (\text{A60})$$

700 $\frac{\partial \rho \mathbf{u}}{\partial t} + \nabla \cdot (\rho \mathbf{u} \otimes \mathbf{u}) = -\nabla p - \rho g \mathbf{e}_z$ (A61)

$$\frac{\partial \rho \theta}{\partial t} + \nabla \cdot (\rho \theta \mathbf{u}) = 0. \quad (\text{A62})$$

On the other hand, the physical processes are as follows. The governing equations for the physical processes being

$$\frac{\partial \rho q_v}{\partial t} = S_v + \text{DIFF}[q_v], \quad (\text{A63})$$

$$705 \quad \frac{\partial \rho q_1}{\partial t} = -\frac{\partial \rho q_1 w_1}{\partial z} + S_1 + \text{DIFF}[q_1], \quad (\text{A64})$$

$$\frac{\partial \rho q_s}{\partial t} = -\frac{\partial \rho q_s w_s}{\partial z} + S_s + \text{DIFF}[q_s], \quad (\text{A65})$$

$$\frac{\partial \rho}{\partial t} = -\frac{\partial \rho q_1 w_1}{\partial z} - \frac{\partial \rho q_s w_s}{\partial z}, \quad (\text{A66})$$

$$\frac{\partial \rho \mathbf{u}}{\partial t} = -\frac{\partial \rho q_1 \mathbf{u} w_1}{\partial z} - \frac{\partial \rho q_s \mathbf{u} w_s}{\partial z} + \text{DIFF}[\mathbf{u}], \quad (\text{A67})$$

$$710 \quad \frac{\partial \rho \theta}{\partial t} = \frac{1}{c_p^*} \left(\frac{p_{00}}{p} \right)^{\frac{R^*}{c_p^*}} \left[Q - \frac{\partial \rho q_1 e_1 w_1}{\partial z} - \frac{\partial \rho q_s e_s w_s}{\partial z} \right] + \text{DIFF}[\theta]. \quad (\text{A68})$$

A2.1 Dynamical processes

A Runge–Kutta (RK) scheme with three steps is used as the temporal integration scheme for the dynamical processes. The RK scheme with three steps used in this model is defined as

$$k_1 = \Delta t f(\phi^t), \quad (\text{A69})$$

$$715 \quad k_2 = \Delta t f\left(\phi^t + \frac{1}{3}k_1\right), \quad (\text{A70})$$

$$k_3 = \Delta t f\left(\phi^t + \frac{1}{2}k_2\right), \quad (\text{A71})$$

$$\phi^{t+\Delta t} = \phi^t + k_3, \quad (\text{A72})$$

where $f(\phi) \equiv \frac{\partial \phi}{\partial t}$. Taylor expansion of the $\phi^{t+\Delta t}$ calculated by Eq. (A72) around ϕ^t yields

$$720 \quad \begin{aligned} \phi^{t+\Delta t} &= \phi^t + \Delta t f(\phi^t) + \frac{1}{2} \Delta t^2 f(\phi^t) f'(\phi^t) \\ &+ \frac{1}{6} \Delta t^3 f(\phi^t) \{f'(\phi^t)\}^2 + \frac{1}{8} \Delta t^3 \{f(\phi^t)\}^2 f''(\phi^t) \\ &+ O(\Delta t^4). \end{aligned} \quad (\text{A73})$$

Theoretically, the Taylor expansion of $\phi(t + \Delta t)$ is

$$725 \quad \begin{aligned} \phi(t + \Delta t) &= \phi^t + \Delta t f(\phi^t) + \frac{1}{2} \Delta t^2 f(\phi^t) f'(\phi^t) \\ &+ \frac{1}{6} \Delta t^3 f(\phi^t) \{f'(\phi^t)\}^2 + \frac{1}{6} \Delta t^3 \{f(\phi^t)\}^2 f''(\phi^t) \\ &+ O(\Delta t^4). \end{aligned} \quad (\text{A74})$$

This shows that the three-step scheme used in this model only has second-order accuracy, despite the three steps. However, it has third-order accuracy for linear equations, because $f''(\phi) = 0$ if $f(\phi)$ is a linear function. This scheme can calculate small-amplitude perturbations with third-order accuracy, and finite amplitude waves with second-order accuracy. In terms of numerical stability, this
730 scheme has a stability region, which is almost the same as in standard explicit RK schemes with three steps for small perturbations. The stability region is wider than for RK schemes with second-order accuracy, and includes the imaginary axis, which corresponds to neutral rotating modes, while that for second-order schemes does not. This is why we choose the three-step method instead of the two-step method.

735 The advantage of this scheme compared with ordinary three-step schemes is the reduction of memory load and storage, which is one of the most expensive components of recent computers with low byte per flop (B/F) ratios, along with the benefit of higher numerical stability.

A2.2 Physical processes

The acoustic wave is the fastest mode in the dynamical processes, and the temporal interval for
740 dynamical processes must be less than the grid spacing divided by the speed of the acoustic wave, to satisfy the Courant-Friedrichs-Lewy (CFL) condition. However, the time scale of the physical processes is usually much longer than the interval, so the temporal interval for the physical processes can be much longer than for the dynamical processes. We use a larger temporal interval to calculate the tendencies of the physical processes than of the dynamical processes. We call the time step for
745 the physical processes a large time step, and for dynamical processes, a small time step.

Traditionally, tendencies in physical processes are calculated with large time steps, and the prognostic variables are updated with the Euler scheme with the tendency for large time steps. This causes an artificial acoustic wave, as described below. In this model, the tendency in some physical processes, such as surface flux (sensible heat flux and latent heat flux) and eddy viscosity and dif-
750 fusion, are calculated with large time steps in the same way, but they are added to the prognostic variables with the tendency of dynamical processes in small time steps.

Figure A2 shows the horizontal averaged vertical velocity in the planetary boundary layer experiment, whose details are described in Sect. 3. In the control run, in which the temporal interval for the large time step (Δt_{phys}) is the same as that for the small time step (Δt_{dyn}), the velocity is almost
755 zero, as shown in Fig. A2a. However, in the case where $\Delta t_{\text{phys}} > \Delta t_{\text{dyn}}$ and the tendency of the surface flux is added to the prognostic variables at the large time step as in the traditional manner, a vertically propagating artificial wave can be seen, as in Fig. A2b.

In addition, such a wave radiating periodically from a fixed location can cause a spurious stationary wave in the simulation output. This could lead to misinterpretation of the simulation results,
760 although this problem is not directly based on physics or modeling. In most practical cases, the temporal interval for historical output (Δt_{output}) is a multiple of Δt_{large} , and snapshots of physical

quantities are the output. In such cases, every snapshot has artificial acoustic waves with the same phase, because the sampling frequency is not sufficient. This results in a spurious stationary wave in the historical output, as we can see in Fig. A2c, that is, forcing by physical processes added at small frequencies results in a spurious stationary wave in the historical data.

The artificial acoustic wave and resulting spurious stationary wave can be avoided if the prognostic variables are updated with the tendency calculated in the physical processes with a small time step, although the tendency is calculated with a large time step. Figure A2d shows that the artificial acoustic wave in (b) and (c) does not appear with this method. This shows that the tendency of the physical processes can be calculated with a large time step (i.e., not every small time step), while the time integration must be done with the dynamical process at a small time step.

A3 Spatial discretization for the dynamical processes

We employ the Arakawa-C staggered grid. Central difference schemes are used for the spatial differential for the dynamical processes, because waves such as gravity waves and acoustic waves generally cannot keep their spatial symmetry with odd-order schemes. Based on a consideration of numerical stability (see Appendix B), we choose the fourth-order central difference scheme for the advection (or convection) terms, and the second-order central difference scheme for the pressure gradient term in the momentum equations and divergence term in the continuity equation.

Before the discretization of the differential equations, we diagnose several quantities from the prognostic variables;

Full-level pressure and potential temperature

$$p_{i,j,k} = p_{00} \left[\frac{(\rho\theta)_{i,j,k} R^*}{p_{00}} \right]^{\frac{c_p^*}{c_p^* - R^*}}, \quad (\text{A75})$$

$$\theta_{i,j,k} = \frac{(\rho\theta)_{i,j,k}}{\rho_{i,j,k}}. \quad (\text{A76})$$

Half-level density

$$\bar{\rho}_{i+\frac{1}{2},j,k} = \frac{\rho_{i+1,j,k} + \rho_{i,j,k}}{2}, \quad (\text{A77})$$

$$\bar{\rho}_{i,j+\frac{1}{2},k} = \frac{\rho_{i,j+1,k} + \rho_{i,j,k}}{2}, \quad (\text{A78})$$

$$\bar{\rho}_{i,j,k+\frac{1}{2}} = \frac{\rho_{i,j,k+1} + \rho_{i,j,k}}{2}. \quad (\text{A79})$$

Half-level velocity

$$\bar{u}_{i+\frac{1}{2},j,k} = \frac{(\rho u)_{i+\frac{1}{2},j,k}}{\bar{\rho}_{i+\frac{1}{2},j,k}}, \quad (\text{A80})$$

$$790 \quad \bar{v}_{i,j+\frac{1}{2},k} = \frac{(\rho v)_{i,j+\frac{1}{2},k}}{\bar{\rho}_{i,j+\frac{1}{2},k}}, \quad (\text{A81})$$

$$\bar{w}_{i,j,k+\frac{1}{2}} = \frac{(\rho w)_{i,j,k+\frac{1}{2}}}{\bar{\rho}_{i,j,k+\frac{1}{2}}}. \quad (\text{A82})$$

Full-level velocity

$$\bar{u}_{i,j,k} = \frac{(\rho u)_{i+\frac{1}{2},j,k} + (\rho u)_{i-\frac{1}{2},j,k}}{2\rho_{i,j,k}}, \quad (\text{A83})$$

$$\bar{v}_{i,j,k} = \frac{(\rho v)_{i,j+\frac{1}{2},k} + (\rho v)_{i,j-\frac{1}{2},k}}{2\rho_{i,j,k}}, \quad (\text{A84})$$

$$795 \quad \bar{w}_{i,j,k} = \frac{(\rho w)_{i,j,k+\frac{1}{2}} + (\rho w)_{i,j,k-\frac{1}{2}}}{2\rho_{i,j,k}}. \quad (\text{A85})$$

A3.1 Continuity equation

Divergence in the continuity equation is calculated with the second-order central difference scheme.

The continuity equation is discretized as

$$800 \quad \left. \frac{\partial \rho}{\partial t} \right|_{i,j,k} = - \frac{(\rho u)_{i+\frac{1}{2},j,k} - (\rho u)_{i-\frac{1}{2},j,k}}{\Delta x_i} - \frac{(\rho v)_{i,j+\frac{1}{2},k} - (\rho v)_{i,j-\frac{1}{2},k}}{\Delta y_j} - \frac{(\rho w)_{i,j,k+\frac{1}{2}} - (\rho w)_{i,j,k-\frac{1}{2}}}{\Delta z_k}. \quad (\text{A86})$$

A3.2 Momentum equations

The advection terms and pressure gradient term are calculated with the fourth and second-order central difference schemes, respectively. The momentum equation is discretized as

$$805 \quad \left. \frac{\partial \rho u}{\partial t} \right|_{i+\frac{1}{2},j,k} = - \frac{(\overline{\rho u})_{i+1,j,k} \bar{u}_{i+1,j,k} - (\overline{\rho u})_{i,j,k} \bar{u}_{i,j,k}}{\Delta x_{i+\frac{1}{2}}} - \frac{(\overline{\rho u})_{i+\frac{1}{2},j+\frac{1}{2},k} \bar{v}_{i+\frac{1}{2},j+\frac{1}{2},k} - (\overline{\rho u})_{i+\frac{1}{2},j-\frac{1}{2},k} \bar{v}_{i+\frac{1}{2},j-\frac{1}{2},k}}{\Delta y_j} - \frac{(\overline{\rho u})_{i+\frac{1}{2},j,k+\frac{1}{2}} \bar{w}_{i+\frac{1}{2},j,k+\frac{1}{2}} - (\overline{\rho u})_{i+\frac{1}{2},j,k-\frac{1}{2}} \bar{w}_{i+\frac{1}{2},j,k-\frac{1}{2}}}{\Delta z_k} - \frac{p_{i+1,j,k} - p_{i,j,k}}{\Delta x_{i+\frac{1}{2}}}, \quad (\text{A87})$$

where

$$810 \quad \overline{(\rho u)}_{i,j,k} = \frac{-(\rho u)_{i+\frac{3}{2},j,k} + 7(\rho u)_{i+\frac{1}{2},j,k}}{12} + \frac{7(\rho u)_{i-\frac{1}{2},j,k} - (\rho u)_{i-\frac{3}{2},j,k}}{12}, \quad (\text{A88})$$

$$\begin{aligned} \overline{(\rho u)}_{i+\frac{1}{2},j+\frac{1}{2},k} &= \frac{-(\rho u)_{i+\frac{1}{2},j+2,k} + 7(\rho u)_{i+\frac{1}{2},j+1,k}}{12} \\ &+ \frac{7(\rho u)_{i+\frac{1}{2},j,k} - (\rho u)_{i+\frac{1}{2},j-1,k}}{12}, \end{aligned} \quad (\text{A89})$$

815

$$\begin{aligned} \overline{(\rho u)}_{i+\frac{1}{2},j,k+\frac{1}{2}} &= \frac{-(\rho u)_{i+\frac{1}{2},j,k+2} + 7(\rho u)_{i+\frac{1}{2},j,k+1}}{12} \\ &+ \frac{7(\rho u)_{i+\frac{1}{2},j,k} - (\rho u)_{i+\frac{1}{2},j,k-1}}{12}, \end{aligned} \quad (\text{A90})$$

and the velocities at the cell wall for the staggered control volume in the x direction are defined as

$$\overline{v}_{i+\frac{1}{2},j+\frac{1}{2},k} = \frac{\overline{v}_{i,j+\frac{1}{2},k} + \overline{v}_{i+1,j+\frac{1}{2},k}}{2}, \quad (\text{A91})$$

$$820 \quad \overline{w}_{i+\frac{1}{2},j,k+\frac{1}{2}} = \frac{\overline{w}_{i,j,k+\frac{1}{2}} + \overline{w}_{i+1,j,k+\frac{1}{2}}}{2}. \quad (\text{A92})$$

In this form, the fourth-order accuracy in the advection term is guaranteed on the condition of constant velocity. The momentum equations in the y and z directions are discretized in the same way. In the vertical equation, $\overline{\rho}_{i,j,k+\frac{1}{2}}g$ is added.

A3.3 Thermodynamics equation

825 The thermodynamics equation is discretized as

$$\begin{aligned} \left. \frac{\partial \rho \theta}{\partial t} \right|_{i,j,k} &= - \frac{(\rho u)_{i+\frac{1}{2},j,k} \overline{\theta}_{i+\frac{1}{2},j,k} - (\rho u)_{i-\frac{1}{2},j,k} \overline{\theta}_{i-\frac{1}{2},j,k}}{\Delta x_i} \\ &- \frac{(\rho v)_{i,j+\frac{1}{2},k} \overline{\theta}_{i,j+\frac{1}{2},k} - (\rho v)_{i,j-\frac{1}{2},k} \overline{\theta}_{i,j-\frac{1}{2},k}}{\Delta y_j} \\ &- \frac{(\rho w)_{i,j,k+\frac{1}{2}} \overline{\theta}_{i,j,k+\frac{1}{2}} - (\rho w)_{i,j,k-\frac{1}{2}} \overline{\theta}_{i,j,k-\frac{1}{2}}}{\Delta z_k}, \end{aligned} \quad (\text{A93})$$

where

$$830 \quad \overline{\theta}_{i+\frac{1}{2},j,k} = \frac{-\theta_{i+2,j,k} + 7\theta_{i+1,j,k} + 7\theta_{i,j,k} - \theta_{i-1,j,k}}{12}, \quad (\text{A94})$$

and $\overline{\theta}_{i,j+\frac{1}{2},k}$, and $\overline{\theta}_{i,j,k+\frac{1}{2}}$ are defined in the same way.

A3.4 Tracer advection

The tracer advection process is done with the Euler scheme after the temporal integration of the dynamical variables (ρ , ρu , ρv , ρw , and $\rho \theta$). We impose the consistency with continuity (CWC; 835 Gross et al., 2002) and monotonicity of the tracer advection following Niwa et al. (2011).

With the condition of no source/sink, the ratio of the mass of tracers to the total mass in the advection process should be conserved along the trajectory. It is, at the least, necessary that the

spatially constant mass concentration should be kept in any motion of fluid. In order to satisfy this condition, we use the same mass flux at the last Runge–Kutta process ($k_3/\Delta t$ in Eq. (A72)) for

840 integration of tracers:

$$\begin{aligned} \frac{(\rho q)_{i,j,k}^{t+\Delta t} - (\rho q)_{i,j,k}^t}{\Delta t} = & - \frac{(\rho u)_{i+\frac{1}{2},j,k} \bar{q}_{i+\frac{1}{2},j,k} - (\rho u)_{i-\frac{1}{2},j,k} \bar{q}_{i-\frac{1}{2},j,k}}{\Delta x_i} \\ & - \frac{(\rho v)_{i,j+\frac{1}{2},k} \bar{q}_{i,j+\frac{1}{2},k} - (\rho v)_{i,j-\frac{1}{2},k} \bar{q}_{i,j-\frac{1}{2},k}}{\Delta y_j} \\ & - \frac{(\rho w)_{i,j,k+\frac{1}{2}} \bar{q}_{i,j,k+\frac{1}{2}} - (\rho w)_{i,j,k-\frac{1}{2}} \bar{q}_{i,j,k-\frac{1}{2}}}{\Delta z_k}. \end{aligned} \quad (\text{A95})$$

In order to satisfy the monotonicity of tracer advection, we employ the Flux Corrected Transport
845 (FCT) scheme, which is a hybrid scheme with a higher-order difference scheme and first-order upwind scheme (Zalesak, 1979). In this model, we use the fourth-order central difference scheme as a higher-order scheme.

If the fourth-order central difference is applied, \bar{q} is discretized as

$$\bar{q}_{i+\frac{1}{2},j,k}^{\text{high}} = \frac{-q_{i+2,j,k} + 7q_{i+1,j,k} + 7q_{i,j,k} - q_{i-1,j,k}}{12}, \quad (\text{A96})$$

850 and $\bar{q}_{i,j+\frac{1}{2},k}^{\text{high}}$ and $\bar{q}_{i,j,k+\frac{1}{2}}^{\text{high}}$ are defined in the same way. On the other hand, in the first-order upwind scheme, \bar{q} is described as

$$\bar{q}_{i+\frac{1}{2},j,k}^{\text{low}} = \begin{cases} q_{i,j,k} & \text{if } (\rho u)_{i+\frac{1}{2},j,k} > 0, \\ q_{i+1,j,k} & \text{otherwise,} \end{cases} \quad (\text{A97})$$

and $\bar{q}_{i,j+\frac{1}{2},k}^{\text{low}}$ and $\bar{q}_{i,j,k+\frac{1}{2}}^{\text{low}}$ are defined in the same way. The actual \bar{q} is described as

$$\bar{q}_{i+\frac{1}{2},j,k} = C_{i+\frac{1}{2},j,k} \bar{q}_{i+\frac{1}{2},j,k}^{\text{high}} + (1 - C_{i+\frac{1}{2},j,k}) \bar{q}_{i+\frac{1}{2},j,k}^{\text{low}}, \quad (\text{A98})$$

855 and $\bar{q}_{i,j+\frac{1}{2},k}$ and $\bar{q}_{i,j,k+\frac{1}{2}}$ are defined in the same way.

Equation (A95) can be written as

$$\begin{aligned} (\rho q)_{i,j,k}^{n+1} = & (\rho q)_{i,j,k}^n - \frac{1}{\Delta x_i \Delta y_j \Delta z_k} \left[\right. \\ & + \left[C_{i+\frac{1}{2},j,k} F_{i+\frac{1}{2},j,k}^{\text{high}} + (1 - C_{i+\frac{1}{2},j,k}) F_{i+\frac{1}{2},j,k}^{\text{low}} \right] \\ & - \left[C_{i-\frac{1}{2},j,k} F_{i-\frac{1}{2},j,k}^{\text{high}} + (1 - C_{i-\frac{1}{2},j,k}) F_{i-\frac{1}{2},j,k}^{\text{low}} \right] \\ 860 & + \left[C_{i,j+\frac{1}{2},k} F_{i,j+\frac{1}{2},k}^{\text{high}} + (1 - C_{i,j+\frac{1}{2},k}) F_{i,j+\frac{1}{2},k}^{\text{low}} \right] \\ & - \left[C_{i,j-\frac{1}{2},k} F_{i,j-\frac{1}{2},k}^{\text{high}} + (1 - C_{i,j-\frac{1}{2},k}) F_{i,j-\frac{1}{2},k}^{\text{low}} \right] \\ & + \left[C_{i,j,k+\frac{1}{2}} F_{i,j,k+\frac{1}{2}}^{\text{high}} + (1 - C_{i,j,k+\frac{1}{2}}) F_{i,j,k+\frac{1}{2}}^{\text{low}} \right] \\ & \left. - \left[C_{i,j,k-\frac{1}{2}} F_{i,j,k-\frac{1}{2}}^{\text{high}} + (1 - C_{i,j,k-\frac{1}{2}}) F_{i,j,k-\frac{1}{2}}^{\text{low}} \right] \right], \end{aligned} \quad (\text{A99})$$

where

$$865 \quad F_{i+\frac{1}{2},j,k}^{\text{high,low}} = \Delta t \Delta y_j \Delta z_k (\rho u)_{i+\frac{1}{2},j,k} q_{i+\frac{1}{2},j,k}^{\text{high,low}}, \quad (\text{A100})$$

and $F_{i,j+\frac{1}{2},k}^{\text{high,low}}$ and $F_{i,j,k+\frac{1}{2}}^{\text{high,low}}$ are defined in the same way. The anti-diffusive flux is defined as

$$A_{i+\frac{1}{2},j,k} = F_{i+\frac{1}{2},j,k}^{\text{high}} - F_{i+\frac{1}{2},j,k}^{\text{low}}, \quad (\text{A101})$$

and $A_{i,j+\frac{1}{2},k}$ and $A_{i,j,k+\frac{1}{2}}$ are defined in the same way. Equation (A99) can be rewritten as

$$870 \quad (\rho q)_{i,j,k}^{n+1} = (\rho q)_{i,j,k}^n - \frac{1}{\Delta x_i \Delta y_j \Delta z_k} \left\{ \begin{aligned} &+ \left[F_{i+\frac{1}{2},j,k}^{\text{low}} + C_{i+\frac{1}{2},j,k} A_{i+\frac{1}{2},j,k} \right] \\ &- \left[F_{i-\frac{1}{2},j,k}^{\text{low}} + C_{i-\frac{1}{2},j,k} A_{i-\frac{1}{2},j,k} \right] \\ &+ \left[F_{i,j+\frac{1}{2},k}^{\text{low}} + C_{i,j+\frac{1}{2},k} A_{i,j+\frac{1}{2},k} \right] \\ &- \left[F_{i,j-\frac{1}{2},k}^{\text{low}} + C_{i,j-\frac{1}{2},k} A_{i,j-\frac{1}{2},k} \right] \\ &+ \left[F_{i,j,k+\frac{1}{2}}^{\text{low}} + C_{i,j,k+\frac{1}{2}} A_{i,j,k+\frac{1}{2}} \right] \\ 875 \quad &- \left[F_{i,j,k-\frac{1}{2}}^{\text{low}} + C_{i,j,k-\frac{1}{2}} A_{i,j,k-\frac{1}{2}} \right] \end{aligned} \right\}. \quad (\text{A102})$$

In practice, we calculate Eq. (A102) by the following steps:

1. The tentative values are calculated using the low-order flux:

$$880 \quad (\rho q)_{i,j,k}^\dagger = (\rho q)_{i,j,k}^n - \frac{1}{\Delta x_i \Delta y_j \Delta z_k} \left[\begin{aligned} &F_{i+\frac{1}{2},j,k}^{\text{low}} - F_{i-\frac{1}{2},j,k}^{\text{low}} \\ &+ F_{i,j+\frac{1}{2},k}^{\text{low}} - F_{i,j-\frac{1}{2},k}^{\text{low}} \\ &+ F_{i,j,k+\frac{1}{2}}^{\text{low}} - F_{i,j,k-\frac{1}{2}}^{\text{low}} \end{aligned} \right]. \quad (\text{A103})$$

2. Allowable maximum and minimum values are calculated:

$$885 \quad (\rho q)_{i,j,k}^{\text{max}} = \max \left\{ \begin{aligned} &\max[(\rho q)_{i,j,k}^\dagger, (\rho q)_{i,j,k}^n], \\ &\max[(\rho q)_{i-1,j,k}^\dagger, (\rho q)_{i-1,j,k}^n], \\ &\max[(\rho q)_{i+1,j,k}^\dagger, (\rho q)_{i+1,j,k}^n], \\ &\max[(\rho q)_{i,j-1,k}^\dagger, (\rho q)_{i,j-1,k}^n], \\ &\max[(\rho q)_{i,j+1,k}^\dagger, (\rho q)_{i,j+1,k}^n], \end{aligned} \right.$$

$$\begin{aligned}
& \max[(\rho q)_{i,j,k-1}^\dagger, (\rho q)_{i,j,k-1}^n], \\
890 \quad & \max[(\rho q)_{i,j,k+1}^\dagger, (\rho q)_{i,j,k+1}^n] \}, \tag{A104}
\end{aligned}$$

$$\begin{aligned}
(\rho q)_{i,j,k}^{\min} = \min\{ & \\
& \min[(\rho q)_{i,j,k}^\dagger, (\rho q)_{i,j,k}^n], \\
& \min[(\rho q)_{i-1,j,k}^\dagger, (\rho q)_{i-1,j,k}^n], \\
& \min[(\rho q)_{i+1,j,k}^\dagger, (\rho q)_{i+1,j,k}^n], \\
895 \quad & \min[(\rho q)_{i,j-1,k}^\dagger, (\rho q)_{i,j-1,k}^n], \\
& \min[(\rho q)_{i,j+1,k}^\dagger, (\rho q)_{i,j+1,k}^n], \\
& \min[(\rho q)_{i,j,k-1}^\dagger, (\rho q)_{i,j,k-1}^n], \\
& \min[(\rho q)_{i,j,k+1}^\dagger, (\rho q)_{i,j,k+1}^n] \}. \tag{A105}
\end{aligned}$$

3. Several values for the flux limiter are calculated:

$$\begin{aligned}
900 \quad P_{i,j,k}^+ = & -\min\left(0, A_{i+\frac{1}{2},j,k}\right) + \max\left(0, A_{i-\frac{1}{2},j,k}\right) \\
& -\min\left(0, A_{i,j+\frac{1}{2},k}\right) + \max\left(0, A_{i,j-\frac{1}{2},k}\right) \\
& -\min\left(0, A_{i,j,k+\frac{1}{2}}\right) + \max\left(0, A_{i,j,k-\frac{1}{2}}\right), \tag{A106}
\end{aligned}$$

$$\begin{aligned}
P_{i,j,k}^- = & \max\left(0, A_{i+\frac{1}{2},j,k}\right) - \min\left(0, A_{i-\frac{1}{2},j,k}\right) \\
& \max\left(0, A_{i,j+\frac{1}{2},k}\right) - \min\left(0, A_{i,j-\frac{1}{2},k}\right) \\
905 \quad & \max\left(0, A_{i,j,k+\frac{1}{2}}\right) - \min\left(0, A_{i,j,k-\frac{1}{2}}\right), \tag{A107}
\end{aligned}$$

$$Q_{i,j,k}^+ = [(\rho q)_{i,j,k}^{\max} - (\rho q)_{i,j,k}^\dagger] \Delta x_i \Delta y_j \Delta z_k, \tag{A108}$$

$$Q_{i,j,k}^- = [(\rho q)_{i,j,k}^\dagger - (\rho q)_{i,j,k}^{\min}] \Delta x_i \Delta y_j \Delta z_k, \tag{A109}$$

$$R_{i,j,k}^+ = \begin{cases} \min(1, Q_{i,j,k}^+ / P_{i,j,k}^+) & \text{if } P_{i,j,k}^+ > 0, \\ 0 & \text{if } P_{i,j,k}^+ = 0, \end{cases} \tag{A110}$$

$$\begin{aligned}
910 \quad R_{i,j,k}^- = & \begin{cases} \min(1, Q_{i,j,k}^- / P_{i,j,k}^-) & \text{if } P_{i,j,k}^- > 0, \\ 0 & \text{if } P_{i,j,k}^- = 0. \end{cases} \tag{A111}
\end{aligned}$$

4. The flux limiters at the cell wall are calculated:

$$C_{i+\frac{1}{2},j,k} = \begin{cases} \min(R_{i+1,j,k}^+, R_{i,j,k}^-) & \text{if } A_{i+\frac{1}{2},j,k} \geq 0, \\ \min(R_{i,j,k}^+, R_{i+1,j,k}^-) & \text{if } A_{i+\frac{1}{2},j,k} < 0, \end{cases} \tag{A112}$$

and $C_{i,j+\frac{1}{2},k}$ and $C_{i,j,k+\frac{1}{2}}$ are defined as the same way.

A3.5 Boundary condition

915 The boundary condition at the top and bottom boundaries is

$$w_{i,j,k_{\max}+\frac{1}{2}} = w_{i,j,k_{\min}-\frac{1}{2}} = 0, \quad (\text{A113})$$

$$(\rho w)_{i,j,k_{\max}+\frac{1}{2}} = (\rho w)_{i,j,k_{\min}-\frac{1}{2}} = 0, \quad (\text{A114})$$

$$(\rho q_v w)_{i,j,k_{\max}+\frac{1}{2}} = (\rho q_v w)_{i,j,k_{\min}-\frac{1}{2}} = 0, \quad (\text{A115})$$

$$(\rho q_l w)_{i,j,k_{\max}+\frac{1}{2}} = (\rho q_l w)_{i,j,k_{\min}-\frac{1}{2}} = 0, \quad (\text{A116})$$

920 $(\rho q_s w)_{i,j,k_{\max}+\frac{1}{2}} = (\rho q_s w)_{i,j,k_{\min}-\frac{1}{2}} = 0, \quad (\text{A117})$

$$(\rho u w)_{i,j,k_{\max}+\frac{1}{2}} = (\rho u w)_{i,j,k_{\min}-\frac{1}{2}} = 0, \quad (\text{A118})$$

$$(\rho v w)_{i,j,k_{\max}+\frac{1}{2}} = (\rho v w)_{i,j,k_{\min}-\frac{1}{2}} = 0, \quad (\text{A119})$$

$$(\rho \theta)_{i,j,k_{\max}+\frac{1}{2}} = (\rho \theta)_{i,j,k_{\min}-\frac{1}{2}} = 0. \quad (\text{A120})$$

$$w_{i,j,k_{\max}+\frac{1}{2}} = 0, \quad (\text{A121})$$

925 $w_{i,j,k_{\min}-\frac{1}{2}} = 0. \quad (\text{A122})$

This leads to the boundary condition of the vertical momentum:

$$(\rho w)_{i,j,k_{\max}+\frac{1}{2}} = 0, \quad (\text{A123})$$

$$(\rho w)_{i,j,k_{\min}-\frac{1}{2}} = 0. \quad (\text{A124})$$

For other prognostic variables, the vertical fluxes at the top and bottom boundaries are zero, except
930 those from physical processes.

A4 Numerical filter

We impose an explicit numerical filter using the numerical viscosity and diffusion. Although the filter is necessary for numerical stability, too strong a filter could dampen any physically meaningful variability. In this subsection, we describe the numerical filters used in this model, and discuss the
935 strength of the filter.

In order to damp the higher wavenumber component selectively, we adopt the hyperviscosity and diffusion in the traditional way. The hyperviscosity and diffusion of the n th order is defined as

$$\frac{\partial}{\partial x} \left[\nu \rho \frac{\partial^{n-1} f}{\partial x^{n-1}} \right], \quad (\text{A125})$$

where f is an arbitrary variable ($f \in \rho, u, v, w, \theta, q$).

940 The Laplacian of f is discretized as

$$\Delta f_i = \frac{1}{\Delta x_i} \left[\frac{1}{\Delta x_{i+\frac{1}{2}}} f_{i+1} - \left(\frac{1}{\Delta x_{i+\frac{1}{2}}} + \frac{1}{\Delta x_{i-\frac{1}{2}}} \right) f_i + \frac{1}{\Delta x_{i-\frac{1}{2}}} f_{i-1} \right], \quad (\text{A126})$$

and

$$\Delta^{n/2} f_i = \frac{1}{\Delta x_i} \left[\frac{1}{\Delta x_{i+\frac{1}{2}}} \Delta^{n/2-1} f_{i+1} - \left(\frac{1}{\Delta x_{i+\frac{1}{2}}} + \frac{1}{\Delta x_{i-\frac{1}{2}}} \right) \Delta^{n/2-1} f_i + \frac{1}{\Delta x_{i-\frac{1}{2}}} \Delta^{n/2-1} f_{i-1} \right]. \quad (\text{A127})$$

945 Here we consider spatially dependent grid interval in calculating the Laplacian. If it is calculated with constant Δx_i as

$$\Delta f_i = \frac{1}{\Delta x_i^2} (f_{i+1} - 2f_i + f_{i-1}), \quad (\text{A128})$$

$$\Delta^{n/2} f_i = \frac{1}{\Delta x_i^2} \left(\Delta^{n/2-1} f_{i+1} - 2\Delta^{n/2-1} f_i + \Delta^{n/2-1} f_{i-1} \right), \quad (\text{A129})$$

non-negligible numerical noise appears where the grid spacing varies (e.g., stretching layer near the
950 top boundary).

The hyperviscosity and diffusion can be discretized as

$$\frac{\partial}{\partial x} \left[\nu \rho \frac{\partial^{n-1} f}{\partial x^{n-1}} \right] \sim \frac{F_{i+\frac{1}{2}} - F_{i-\frac{1}{2}}}{\Delta x_i}, \quad (\text{A130})$$

where

$$F_{i+\frac{1}{2}} = \frac{\nu_{i+\frac{1}{2}} \rho_{i+\frac{1}{2}}}{\Delta x_{i+\frac{1}{2}}} \left(\Delta^{n/2-1} f_{i+1} - \Delta^{n/2-1} f_i \right). \quad (\text{A131})$$

955 The coefficient, ν , is written as

$$\nu_{i+\frac{1}{2}} = (-1)^{n/2+1} \gamma \frac{\Delta x_{i+\frac{1}{2}}^n}{2^n \Delta t}, \quad (\text{A132})$$

where γ is a non-dimensional coefficient. One-dimensional sinusoidal two-grid noise will decay to $1/e$ with $1/\gamma$ time steps. Note that the theoretical e-folding time is $\frac{2^n}{\pi^n} \frac{\Delta t}{\gamma}$. However, it is $\frac{\Delta t}{\gamma}$ with the fourth-order central scheme used in this model.

960 For the numerical stability of the numerical filter itself, it should satisfy

$$\gamma < 1 \quad (\text{A133})$$

for the ~~one-dimensional~~ one-dimensional two-grid noise, and

$$\gamma < \frac{1}{3} \quad (\text{A134})$$

for the ~~three-dimensional~~ three-dimensional two-grid noise. The conditions might be stricter for
965 other types of noise.

The flux, F , for the numerical filter is added to the advective flux as

$$(\rho u f)_{i+\frac{1}{2}}^\dagger = (\rho u f)_{i+\frac{1}{2}} + F_{i+\frac{1}{2}}, \quad (\text{A135})$$

where the first term of the right-hand side is the flux calculated by the advection scheme. In the present model, the advection scheme is the fourth-order central difference scheme (see Appendix A3). This concept is very important for the CWC condition in the tracer equations (see Appendix A3.4). The modified mass flux of the numerical filter should be used in the tracer advection, otherwise the CWC condition is violated.

The numerical viscosity and diffusion in the y and z directions are formulated in the same way as in the x direction, although a special treatment for the z direction is needed. At the top and bottom boundaries, the flux must be zero, $F_{k_{\max}+\frac{1}{2}} = F_{k_{\min}-\frac{1}{2}} = 0$. In order to calculate the $F_{k_{\max}-\frac{1}{2}}$ and $F_{k_{\min}+\frac{1}{2}}$, values beyond the boundaries, $f_{k_{\max}+1}$ and $f_{k_{\min}-1}$, are required, then the mirror boundary condition is assumed; $f_{k_{\max}+1} = -f_{k_{\max}}$ and $f_{k_{\min}-1} = -f_{k_{\min}}$. This condition is appropriate to cause the decay the vertical two-grid noise.

Vertical profiles of density, potential temperature, and water vapor usually have significant (e.g., logarithmic) dependencies on height. Eq. (A130) has a non-zero value even for the steady state, and the numerical filter produces artificial motion. To reduce this artificial motion, we introduce a reference profile which is a function of height, and deviation from the reference is used as f instead of ρ , θ , and q_v in calculating the numerical filter. The reference profile can be chosen arbitrarily, but a profile under hydrostatic balance is usually chosen.

Determination of the value of the non-dimensional coefficient γ is an important issue. If it is too small, the simulation could be numerically unstable or numerical noise could violate the physical variability, while variability could be dampened too much if γ is too large. At least, the effect of the numerical filter on the phenomena of the scale we want to simulate must be reasonably smaller than the effect of the physically oriented viscosity and diffusion, i.e., the eddy viscosity and diffusion representing the effect of the SGS turbulence.

The e-folding time of an eddy whose spatial scale is L is $\frac{2^n L^n}{\gamma \Delta x^n} \Delta t$ according to the numerical filter, and is $\frac{L^2}{C_s^2 (2\Delta x)^2 |S|}$ by eddy viscosity and diffusion for an isotropic grid under neutral stability conditions. The e-folding time of an eddy whose scale is larger than the effective resolution of the numerical filter should be longer than that for eddy viscosity and diffusion, where the effective resolution is the smallest scale of physically meaningful phenomena that a simulation can represent. It requires that $\gamma < 2^{n+2} C_s^2 |S| \Delta t \frac{L^{n-2}}{\Delta x^{n-2}}$. The magnitude of the characteristic velocity, U , is assumed to be $O(1)$ – $O(10)$ m s^{-1} for motions whose spatial scale is approximately equal to the effective resolution. Then, $|S| \Delta t (\sim \frac{U}{\Delta x} \Delta t)$ is estimated to be $O(10^{-3})$ – $O(10^{-2})$, because $\Delta x / \Delta t$ is $O(350)$ – $O(1000)$ m s^{-1} according to the CFL condition. Roughly speaking, the effective resolution is usually several times the grid spacing. Here, we assume $L / \Delta x \sim 2 - 10$; Skamarock (2004) suggested that the effective resolution is about six times the grid spacing. It is found that γ should be

$$\gamma < O(10^{-3}) - O(1) \text{ for } n = 4, \quad (\text{A136})$$

$$\gamma < O(1) - O(10^5) \text{ for } n = 8. \quad (\text{A137})$$

This condition is stricter than the stability condition Eq. (A134) for $n = 4$, so this condition must
1005 be considered when the value of γ is determined if $n = 4$ is chosen. On the other hand, it is always
satisfied if the stability condition is satisfied for $n \geq 8$. This means that in this case, the effect of the
numerical filter on phenomena whose spatial scale is larger than the effective resolution is always
smaller than that of the eddy viscosity and diffusion, and this condition for γ does not have to be
considered if $n \geq 8$ is chosen. The advantage of an explicit numerical filter is that its strength can be
1010 controlled or tuned based on such physical considerations.

Odd-order advection schemes are generally more stable numerically than even-order schemes. In
general, odd-order schemes can be divided into a central difference term and a filter term (and some-
time other additional terms) conceptually. This implicit numerical filter stabilizes the calculations.
We estimate the corresponding value of γ for the implicit filter. The spatial differential of a scalar
1015 quantity ϕ with the ordinary third-order upwind difference scheme is written as

$$\begin{aligned} \frac{\partial \phi}{\partial x} \Big|_i &\sim \frac{-\phi_{i+2} + 8\phi_{i+1} - 8\phi_{i-1} + \phi_{i-2}}{12\Delta x} \\ &+ \frac{\Delta x^3}{12} |U| \frac{\phi_{i+2} - 4\phi_{i+1} + 6\phi_i - 4\phi_{i-1} + \phi_{i-2}}{\Delta x^4}. \end{aligned} \quad (\text{A138})$$

The first term on the right-hand side of the equation represents the central difference with fourth-
order accuracy. The second term, divided by $|U|$, is written as

$$1020 \frac{\Delta x^3}{12} \frac{\phi_{i+2} - 4\phi_{i+1} + 6\phi_i - 4\phi_{i-1} + \phi_{i-2}}{\Delta x^4} = \frac{\Delta x^3}{12} \left(\frac{\partial^4 \phi}{\partial x^4} \Big|_i + O(\Delta x^2) \right), \quad (\text{A139})$$

and corresponds to fourth-order hyperviscosity and diffusion. This can be considered as implicit
numerical filter introduced to the scheme. Their dimensional coefficient is $|U| \frac{\Delta x^3}{12}$, and the non-
dimensional coefficient is

$$\gamma = |U| \frac{4\Delta t}{3\Delta x}. \quad (\text{A140})$$

1025 Considering the CFL condition, $\Delta t/\Delta x < 1/c$, γ is $O(10^{-3})$ – $O(10^{-2})$, if U is assumed to be $O(1)$ –
 $O(10)$ m s $^{-1}$, where c is the speed of acoustic wave and is $O(10^2)$ – $O(10^3)$. This mostly satisfies the
necessary condition (Eq. (A136)).

The third-order scheme by Kawamura and Kuwahara (1984) is a modification of the third-order
scheme to enable changing the strength of the numerical filter, and is written as

$$1030 \frac{\partial \phi}{\partial x} \Big|_i = \frac{-\phi_{i+2} + 8\phi_{i+1} - 8\phi_{i-1} + \phi_{i-2}}{12\Delta x} \\ + C \frac{\Delta x^3}{4} |U| \frac{\phi_{i+2} - 4\phi_{i+1} + 6\phi_i - 4\phi_{i-1} + \phi_{i-2}}{\Delta x^4}. \quad (\text{A141})$$

We can change the constant C to control the strength of the numerical filter.

Although these schemes can be thought of as being similar to central difference and explicit
fourth-order numerical filters, the total coefficient of the filter depends on the velocity U . The

1035 strength of the implicit filter could be too large when the basic wind state is strong, and its ef-
fect is not always smaller than that of the eddy viscosity and diffusion representing the effect of
SGS turbulence. As we discuss here, it is important to estimate the effect of the numerical filter
used in a model, and to control or confirm that the artificial filter does not violate the viscosity and
diffusion as a physical parameterization. This point is one of the most important factors in choosing
1040 a numerical scheme in this type of study.

A5 Physical processes

Currently, the following processes are implemented as physical processes in SCALE-LES.

- Cloud microphysics
 - A one-moment three-category bulk scheme (Kessler, 1969)
 - 1045 – A one-moment six-category bulk scheme (Tomita, 2008)
 - A two-moment six-category bulk scheme (Seiki and Nakajima, 2014)
 - A bin method (Suzuki et al., 2010)
- Sub-grid turbulence
 - A Smagorinsky–Lilly-type scheme including stability effect developed by Brown et al.
1050 (1994)
 - A RANS (Reynolds Averaged Navier–Stokes Simulation) turbulence model (Nakanishi
and Niino, 2004, level 2.5)
- Radiation
 - A parallel plane radiation model (MstrnX; Sekiguchi and Nakajima, 2008)
- 1055 – Surface flux
 - A Louis-type bulk model (Louis, 1979; Uno et al., 1995)
 - A Beljaars-type bulk model (Beljaars and Holtslag, 1991; Wilson, 2001)
- Urban Canopy
 - A single-layer urban canopy model (Kusaka et al., 2001; Kusaka and Kimura, 2004)

1060 Appendix B: Numerical stability

In this model, we use the second-order central difference scheme for the spatial differential terms
of the pressure gradient and the divergence of mass flux, and the fourth-order scheme for advection

terms. In this section, we investigate the numerical instability of the terms and show why we use the second-order scheme for these terms.

1065 For simplicity, we assume a case in which the initial potential temperature is constant θ_0 , and the initial momentum is also constant. In addition, dry conditions are assumed. The potential temperature is to be constant at all times.

The governing equations are

$$\frac{\partial \rho}{\partial t} = -\nabla \cdot (\rho \mathbf{u}), \quad (\text{B1})$$

$$1070 \quad \frac{\partial \rho \mathbf{u}}{\partial t} = -\frac{\partial p}{\partial \mathbf{x}}, \quad (\text{B2})$$

$$p = p_{00} \left(\frac{\rho R_d \theta_0}{p_{00}} \right)^{\frac{c_{pd}}{c_{vd}}}. \quad (\text{B3})$$

To investigate the stability, the equations are linearized. The density is divided into the basic value and the deviation from the basic:

$$\rho = \rho_0 + \rho', \quad (\text{B4})$$

1075 where

$$\rho_0 = \frac{p_{00}}{R_d \theta_0}. \quad (\text{B5})$$

Pressure is written as

$$p \sim p_{00} \left(1 + \frac{c_{pd}}{c_{vd}} \frac{\rho'}{\rho_0} \right) = p_{00} + c^2 \rho', \quad (\text{B6})$$

where c is the speed of the acoustic wave ($= \sqrt{\frac{c_{pd}}{c_{vd}} \frac{p_{00}}{\rho_0}}$) in the reference state of $p = p_{00}$ and $\rho = \rho_0$.

1080 The time derivatives are written as

$$\begin{aligned} \frac{\partial \rho}{\partial t} \Big|_{i,j,k} = & - \frac{-a(\rho u)_{i+1,j,k} + b(\rho u)_{i,j,k} - b(\rho u)_{i-1,j,k} + a(\rho u)_{i-2,j,k}}{(b-3a)\Delta x} \\ & - \frac{-a(\rho v)_{i,j+1,k} + b(\rho v)_{i,j,k} - b(\rho v)_{i,j-1,k} + a(\rho v)_{i,j-2,k}}{(b-3a)\Delta y} \\ & - \frac{-a(\rho w)_{i,j,k+1} + b(\rho w)_{i,j,k} - b(\rho w)_{i,j,k-1} + a(\rho w)_{i,j,k-2}}{(b-3a)\Delta z}, \end{aligned} \quad (\text{B7})$$

$$\frac{\partial(\rho u)}{\partial t} \Big|_{i,j,k} = -c^2 \frac{-a\rho_{i+2,j,k} + b\rho_{i+1,j,k} - b\rho_{i,j,k} + a\rho_{i-1,j,k}}{(b-3a)\Delta x}, \quad (\text{B8})$$

$$1085 \quad \frac{\partial(\rho v)}{\partial t} \Big|_{i,j,k} = -c^2 \frac{-a\rho_{i,j+2,k} + b\rho_{i,j+1,k} - b\rho_{i,j,k} + a\rho_{i,j-1,k}}{(b-3a)\Delta y}, \quad (\text{B9})$$

$$\frac{\partial(\rho w)}{\partial t} \Big|_{i,j,k} = -c^2 \frac{-a\rho_{i,j,k+2} + b\rho_{i,j,k+1} - b\rho_{i,j,k} + a\rho_{i,j,k-1}}{(b-3a)\Delta z}. \quad (\text{B10})$$

For the second-order central difference, $a = 0$ and $b = 1$, while $a = 1$ and $b = 9$ for the fourth order.

Now we consider the numerical stability of a two-grid noise. An eigen analysis showed that the two-grid noise is the most unstable eigen mode in all the cases we tested. The density with the noise

1090 can be written as $\rho_{i,j,k}^t = \rho_0 + A \sin(\pi(i+j+k))$. Using the third-step RK scheme, the density after one time step, $\rho_{i,j,k}^{t+\Delta t}$, is

$$\rho_{i,j,k}^{t+\Delta t} - \rho_0 = \left(1 - 6 \frac{(a+b)^2}{(b-3a)^2} c^2 \frac{\Delta t^2}{\Delta x^2}\right) (\rho_{i,j,k}^t - \rho_0). \quad (\text{B11})$$

The necessary condition for the two-grid noise to decrease in time is

$$\left|1 - 6 \left(\frac{a+b}{b-3a} \frac{\Delta t}{\Delta t_{\text{CFL}}}\right)^2\right| < 1, \quad (\text{B12})$$

1095 then

$$\Delta t < \frac{1}{\sqrt{3}} \Delta t_{\text{CFL}}, \quad (\text{B13})$$

for the second-order spatial difference, and

$$\Delta t < \frac{\sqrt{3}}{5} \Delta t_{\text{CFL}}, \quad (\text{B14})$$

1100 for the fourth order, where $\Delta t_{\text{CFL}} = \Delta x/c$. If the fourth-order scheme is adopted, we need to make Δt 0.6 times (or number of time steps multiplied by 1.67) larger than that in the second-order scheme.

1105 The accuracy of the pressure gradient term and divergence term could especially affect the high-frequency modes of acoustic and gravity waves. The high-frequency modes seem to be less significant meteorologically. We choose the second-order spatial scheme for terms of the pressure gradient and divergence terms to increase Δt in spite of the decreasing accuracy of the terms, and the fourth-order scheme for the other terms.

Appendix C: Density current experiment

Straka et al. (1993) proposed a standard benchmark test of a ~~nonlinear~~non-linear density current problem, and we performed a test experiment with the same settings. A cold bubble whose size is 4×2 km (horizontal and vertical, respectively) and minimum thermal perturbation is -15 K, is placed in the domain's center horizontally, and at 3 km height in a basic resting state whose potential temperature is constant at 300 K. The domain is ~~two-dimensional~~two-dimensional, and its size is $51.2 \text{ km} \times 6.4 \text{ km}$. Runs are done with various spatial resolutions of 200, 100, 50, and 25 m. The viscosity and diffusion are given by a coefficient of $75 \text{ m}^2 \text{ s}^{-1}$ for the velocities and scalar quantities.

1115 Figure A3 shows a plot of the potential temperature at $t=900$ s for the 100 m resolution run. The structure, such as the position of the front of the density current, rolls caused by the K-H instability, and the magnitude at the local maxima, is reasonably similar with results of various models shown in Straka et al. (1993). The dependency of the L_2 norm of the potential temperature perturbation as a reference solution of the 25 m run of spatial resolution shows higher-order convergence than the second order between 100 and 50 m runs (Fig. A4). This model uses a fourth-order central difference

1120

scheme for advection, which has fourth-order accuracy with constant velocity, and second-order central difference scheme for the acoustic wave. The higher than second-order convergence seems to be due to the fourth-order difference scheme, although the velocity is not constant, and the scheme does not have fourth-order accuracy. The convergence is almost first-order between the 200 and
1125 100 m runs. As Straka et al. (1993) mentioned, 200 m is too coarse to resolved this density current.

Acknowledgements. The authors would like to thank ~~two Referees~~the editor and the two referees, Dr. Good-frient and an anonymous referee, for fruitful discussions. This model was developed by an interdisciplinary team at RIKEN Advanced Institute for Computational Science (AICS) called Team SCALE, from the fields of meteorological science and computer science. Part of the results in this paper ~~were~~was obtained using the K
1130 computer at the RIKEN AICS. Figures in this paper were drawn using tools developed by GFD-Dennou Club (<http://www.gfd-dennou.org/index.html.en>) and gnuplot (<http://www.gnuplot.info/>).

References

- Beljaars, A. C. M. and Holtslag, A. A. M.: Flux parameterization over land surfaces for atmospheric models, *J. Appl. Meteorol.*, 30, 327–341, 1991.
- 1135 Black, T. L.: The new NMC mesoscale Eta model: Description and forecast examples, *Weather Forecast.*, 9, 265–278, 1994.
- Brown, A. R., Derbyshire, S. H., and Mason, P. J.: Large-eddy simulation of stable atmospheric boundary layers with a revised stochastic subgrid model, *Q. J. Roy. Meteor. Soc.*, 120, 1485–1512, 1994.
- Deardorff, J. W.: On the magnitude of the subgrid scale eddy coefficient, *J. Comput. Phys.*, 7, 120–133, 1971.
- 1140 Deardorff, J. W.: Stratocumulus-capped mixed layers derived from a three-dimensional model, *Bound.-Lay. Meteorol.*, 18, 495–527, 1980.
- Favre, A.: Turbulence: space-time statistical properties and behavior in supersonic flows, *Phys. Fluids*, 26, 2851–2863, 1983.
- Germano, M., Piomelli, U., Moin, P., and Cabot, W. H.: A dynamic subgridscale eddy viscosity model, *Phys. Fluids* ~~A-Fluid~~A-Fluid, 3, 1760–1765, 1991.
- 1145 Gross, E. S., Bonaventura, L., and Rosatti, G.: Consistency with continuity in conservative advection schemes for free-surface models, *Int. J. Numer. Meth. Fl.*, 38, 307–327, 2002.
- Hodur, R. H.: The naval research laboratory’s coupled ocean/atmosphere mesoscale prediction system (COAMPS), *Mon. Weather Rev.*, 125, 1414–1430, 1997.
- 1150 Horiuti, K.: A proper velocity scale for modeling subgrid-scale eddy viscosities in large eddy simulation, *Phys. Fluids*, 5, 146–157, 1993.
- Ito, J., Tanaka, R., and Niino, H.: Large eddy simulation of dust devils in a diurnally-evolving convective mixed layer, *J. Meteorol. Soc. Jpn.*, 88, 63–77, 2010.
- Kawamura, T. and Kuwahara, K.: Computation of high Reynolds number flow around a circular cylinder with surface roughness, *AIAA Paper*, 84-0340, 1984.
- 1155 Kessler, E.: On the distribution and continuity of water substance in atmospheric circulation, *Meteor. Mon.*, 10, 1–84, 1969.
- Klemp, J. B. and Wilhelmson, R. B.: The simulation of three-dimensional convective storm dynamics, *J. Atmos. Sci.*, 35, 1070–1096, 1978.
- 1160 Kusaka, H., Kondo, H., Kikegawa, Y., and Kimura, F.: A simple single-layer urban canopy model for atmospheric models: Comparison with multi-layer and slab models, *Bound.-Lay. Meteorol.*, 101, 329–358, 2001.
- Kusaka, H., and Kimura, F.: Coupling a single-layer urban canopy model with a simple atmospheric model: Impact on urban heat island simulation for an idealized case, *J. Meteorol. Soc. Jpn.*, 82, 67–80, 2004.
- Leonard, B. P.: A stable and accurate convective modeling procedure based on quadratic upstream interpolation, *Comput. Method. Appl. M.*, 19, 59–98, 1979.
- 1165 Leonard, B. P., MacVean, M. K., and Lock, A. P.: Positivity-preserving numerical schemes for multidimensional advection, Technical Memorandum, 106055 ICOMP-93-05, NASA, USA, 62 pp., 1993.
- Lilly, D. K.: On the numerical simulation of buoyant convection, *Tellus*, 14, 148–171, 1962.
- Lilly, D. K.: The representation of small-scale turbulence in numerical simulation experiments, in: Proceedings of the IBM scientific computing symposium on environmental sciences, White Plains, New York, IBM Form no. 320-1951, 195–209, 1967.
- 1170

- Louis, J.-F.: A parametric model of vertical eddy fluxes in the atmosphere, *Bound.-Lay. Meteorol.*, 17, 187–202, 1979.
- Mellor, G. L. and Yamada, T.: Development of a turbulence closure model for geophysical fluid problems, *Rev. Geophys. Space Ge.*, 20, 851–875, 1982.
- 1175 Miyamoto, Y., Kajikawa, Y., Yoshida, R., Yamaura, T., Yashiro, H., and Tomita, H.: Deep moist atmospheric convection in a subkilometer global simulation, *Geophys. Res. Letters*, 40, 4922–4926, 2013.
- Miyamoto, Y., Yoshida, R., Yamaura, T., Yashiro, H., Tomita, H., and Kajikawa, Y.: Does convection vary in different cloudy disturbances?, *Atmos. Sci. Lett.*, 16, 305–309, doi:10.1002/asl2.558, 2015.
- 1180 Moeng, C.-H. and Wyngaard, J. C.: Spectral analysis of large-eddy simulations of the convective boundary layer, *J. Atmos. Sci.*, 45, 3573–3587, 1988.
- Moin, P., Squires, K., Cabot, W., and Lee, S.: A dynamic subgrid-scale model for compressible turbulence and scalar transport, *Phys. Fluids A-FluidA-Fluid*, 3, 2746–2757, 1991.
- Nakanishi, M. and Niino, H.: An improved Mellor-Yamada level-3 model with condensation physics: Its design and verification, *Bound.-Lay. Meteorol.*, 112, 1–31, 2004.
- 1185 Niwa, Y., Tomita, H., Satoh, M., and Imasu, R.: A three-dimensional icosahedral grid advection scheme preserving monotonicity and consistency with continuity for atmospheric tracer transport, *J. Meteorol. Soc. Jpn.*, 89, 255–268, 2011.
- Saito, K., Fujita, T., Yamada, Y., Ishida, J., Kumagai, Y., Aranami, K., Ohmori, S., Nagasawa, R., Kumagai, S., Muroi, C., Kato, T., Eito, H., and Yamazaki, Y.: The operational JMA nonhydrostatic mesoscale model, *Mon. Weather Rev.*, 134, 1266–1298, 2006.
- 1190 Sato, Y., Nishizawa, S., Yashiro, H., Miyamoto, Y., and Tomita, H.: Potential of retrieving shallow-cloud life cycle from future generation satellite observations through cloud evolution diagrams: a suggestion from a large eddy simulation, *SOLA*, 10, 10–14, 2014.
- 1195 Satoh, M., Tomita, H., Yashiro, H., Miura, H., Kodama, C., Seiki, T., Noda, A. T., Yamada, Y., Goto, D., Sawada, M., Miyoshi, T., Niwa, Y., Hara, M., Ohno, Y., Iga, S., Arakawa, T., Inoue, T., and Kubokawa, H.: The non-hydrostatic icosahedral atmospheric model: description and development, *PEPS*, 1, 18, doi:10.1186/s40645-014-0018-1, 2014.
- Seiki, T. and Nakajima, T.: Aerosol effect of the condensational process on a convective cloud simulation, *J. Atmos. Sci.*, 71, 833–853, 2014.
- 1200 Sekiguchi, M. and Nakajima, T.: A k-distribution-based radiation code and its computational optimization for an atmospheric general circulation model, *J. Quant. Spectrosc. Ra.*, 109, 2779–2793, 2008.
- Scotti, A., Meneveau, C., and Lilly, D. K.: Generalized Smagorinsky model for anisotropic grids, *Phys. Fluids A-FluidA-Fluid*, 5, 2306–2308, 1993.
- 1205 Skamarock, W.: Evaluating mesoscale NWP models using kinetic energy spectra, *Mon. Weather Rev.*, 132, 3019–3032, 2004.
- Skamarock, W. C., Klemp, J. B., Dudhia, J., Gill, D. O., Barker, D. M., Duda, M. G., Huang, X.-Y., Wang, W., and Powers, J. G.: A description of the Advanced Research WRF version 3, NCAR Technical Note, 475, 2008.
- 1210 Smagorinsky, J.: General circulation experiments with the primitive equations, *Mon. Weather Rev.*, 91, 99–164, 1963.

- Straka, J. M., Wilhelmson, R. B., Wicher, L. J., Anderson, J. R., and Droegemeier, K. K.: Numerical solutions of non-linear density current: A benchmark solution and comparisons, *Int. J. Numer. Meth. Fl.*, 17, 1–22, 1993.
- 1215 Sullivan, P. P., McWilliams, J. C., and Moeng, C.-H.: A subgrid-scale model for large-eddy simulation of planetary boundary-layer flows, *Bound.-Lay. Meteorol.*, 71, 247–276, 1994.
- Sullivan, P. P. and Patton, E. G.: The effect of mesh resolution on convective boundary layer statistics and structures generated by large-eddy simulation, *J. Atmos. Sci.*, 68, 2395–2415, 2011.
- Suzuki, K., Nakajima, T., Nakajima, T. Y., and Khain, A. P.: A study of microphysical mechanisms for correlation patterns between droplet radius and optical thickness of warm clouds with a spectral bin microphysics model, *J. Atmos. Sci.*, 67, 1126–1141, 2010.
- 1220 Tomita, H. and Satoh, M.: A new dynamical framework of nonhydrostatic global model using the icosahedral grid, *Fluid Dyn. Res.*, 34, 357–400, 2004.
- Tomita, H.: New microphysical schemes with five and six categories by diagnostic generation of cloud ice, *J. Meteorol. Soc. Jpn.*, 86, 121–142, 2008.
- 1225 Tsuboki, K. and Sakakibara, A.: Large-scale parallel computing of cloud resolving storm simulator, in: *High Performance Computing*, edited by: Zima, H. P. et al., Springer, 243–259, 2002.
- Tripoli, G. J. and Cotton, W. R.: The Colorado State University three-dimensional cloud/mesoscale model-1982: Part I. General theoretical framework and sensitivity experiments, *Atmos. Res.*, 16, 185–220, 1982.
- 1230 Uno, I., Cai, X.-M., Steyn, D. G., and Emori, S.: A simple extension of the Louis method for rough surface layer modeling, *Bound.-Lay. Meteorol.*, 76, 395–409, 1995.
- Wilson, D. K.: An alternative function for the wind and temperature gradients in unstable surface layers, *Bound.-Lay. Meteorol.*, 99, 151–158, 2001.
- Xue, M., Droegemeier, K. K., and Wong, V.: The advanced regional prediction system (ARPS) – a multiscale nonhydrostatic atmospheric simulation and prediction tool. Part I: Model dynamics and verification, *Meteorol. Atmos. Physics.*, 75, 161–193, 2000.
- 1235 Yakhot, A., Orszag, S., Yakhot, V., and Israeli, M.: Renormalization group formulation of large-eddy simulations, *J. Sci. Comput.*, 4, 139–158, 1989.
- Zalesk, S. T.: Fully multi-dimensional flux-corrected transport algorithms for fluids, *J. Comput. Phys.*, 31, 335–362, 1979.
- 1240 vanZanten, M. C., Stevens, B., Nuijens, L., Siebesma, A. P., Acherman, A., Burnet, F., Cheng, A., Couvreux, F., Jiang, H., Khairoutdinov, M., Kogan, Y., Lewellen, D. C., Mechem, D., Nakamura, K., Noda, A., Shipway, B. J., Slawinska, J., Wang, S., and Wyszogrodzki, A.: Controls on precipitation and cloudiness in simulations of trade-wind cumulus as observed during RICO, *J. Adv. Model. Earth Syst.*, 3, M06001, doi:10.1029/2011MS000056, 2011.
- 1245

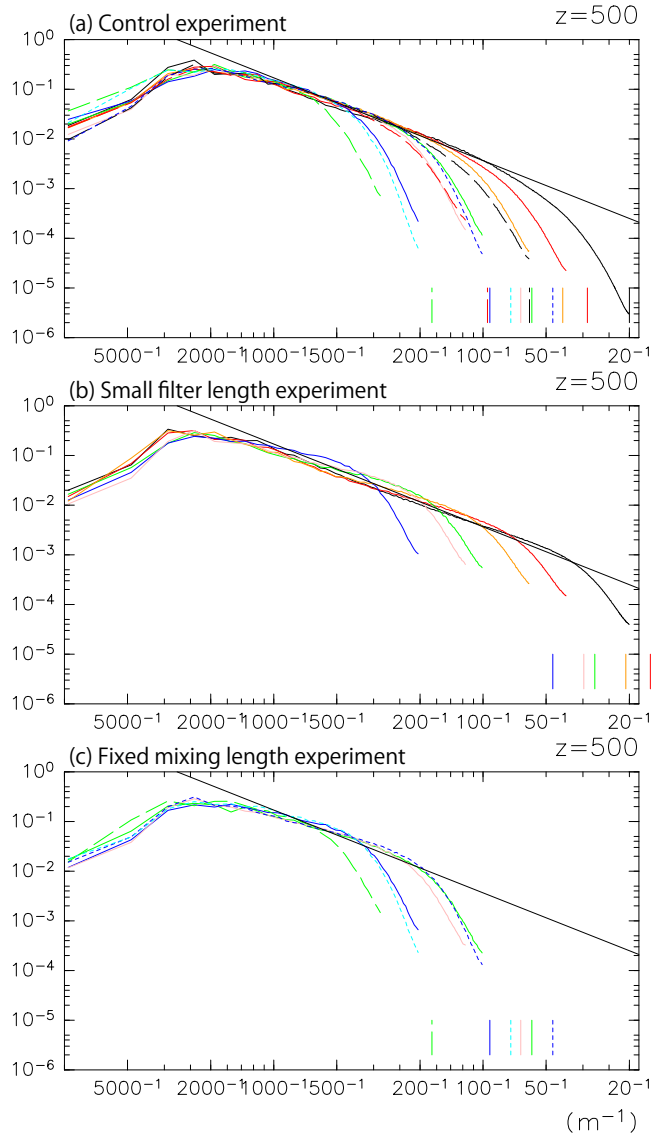


Figure 1. Energy spectrum ~~three dimensional~~three-dimensional velocity at height of 500 m averaged over $t = 3.5$ to 4 h in **(a)** control experiment, **(b)** small filter length experiment, and **(c)** fixed mixing length experiment. Colors indicate grid aspect ratio; 1 (black), 2 (red), 3 (orange), 5 (green), 6 (pink), 10 (blue), and 20 (cyan). Line types indicate vertical resolution: 10 m (solid line), 30 m (dashed line), and 5 m (dotted line). Linear slope representing the slope of $-5/3$ power fit to the spectrum of the 10mAR1 run between $1/1000$ and $1/100 \text{ m}^{-1}$ is superimposed. Only spectra for $\Delta z = 10 \text{ m}$ runs in the small filter length experiment and for large aspect ratio runs ($a \geq 5$) in the fixed mixing length experiment are shown.

Table 1. Notation of symbols.

ρ	total density	kg m^{-3}
q_d	ratio of mass of dry air to total mass	–
q_v	specific humidity	–
q_l	specific liquid water content	–
q_s	specific solid water content	–
t	time	s
\mathbf{u}	velocity vector of air flow	m s^{-1}
u	x component of velocity	m s^{-1}
v	y component of velocity	m s^{-1}
w	z component of velocity	m s^{-1}
w_l	relative velocity of liquid water to gas	m s^{-1}
w_s	relative velocity of solid water to gas	m s^{-1}
S_v	source term of water vapor	$\text{kg m}^{-3} \text{s}^{-1}$
S_l	source term of liquid water	$\text{kg m}^{-3} \text{s}^{-1}$
S_s	source term of solid water	$\text{kg m}^{-3} \text{s}^{-1}$
p	pressure	N m^{-2}
g	gravitational acceleration	m s^{-2}
f_l	drag force from water loading by liquid water	$\text{kg m}^{-2} \text{s}^{-2}$
f_s	drag force from water loading by solid water	$\text{kg m}^{-2} \text{s}^{-2}$
\mathbf{e}_z	vertical unit vector (upward)	–
R_d	gas constant for dry air for unit mass	J kg^{-1}
R_v	gas constant for water vapor for unit mass	J kg^{-1}
T	temperature	K
Q_d	diabatic heating from dry air	$\text{J m}^{-3} \text{s}^{-1}$
Q_v	diabatic heating from water vapor	$\text{J m}^{-3} \text{s}^{-1}$
Q_l	diabatic heating from liquid water	$\text{J m}^{-3} \text{s}^{-1}$
Q_s	diabatic heating from solid water	$\text{J m}^{-3} \text{s}^{-1}$
e_d	internal energy of dry air	J kg^{-1}
e_v	internal energy of water vapor	J kg^{-1}
e_l	internal energy of liquid water	J kg^{-1}
e_s	internal energy of solid water	J kg^{-1}
e	total internal energy	J kg^{-1}
c_{vd}	specific heat at constant volume of dry air	$\text{J kg}^{-1} \text{K}^{-1}$
c_{vv}	specific heat at constant volume of water vapor	$\text{J kg}^{-1} \text{K}^{-1}$
c_{pd}	specific heat at constant pressure of dry air	$\text{J kg}^{-1} \text{K}^{-1}$
c_{pv}	specific heat at constant pressure of water vapor	$\text{J kg}^{-1} \text{K}^{-1}$
c_l	specific heat of liquid water	$\text{J kg}^{-1} \text{K}^{-1}$
c_s	specific heat of solid water	$\text{J kg}^{-1} \text{K}^{-1}$
p_{00}	standard pressure	Pa
θ_d	potential temperature of dry air	K
θ	potential temperature of total air	K

Table 2. Filter lengths and the effect of grid aspect ratio on mixing length in the three [experiment-experiments](#) performed in this study.

	filter length	modification by the grid aspect ratio
control experiment	$2(\Delta x \Delta y \Delta z)^{1/3}$	yes
small filter length experiment	$(\Delta x \Delta y \Delta z)^{1/3}$	yes
fixed mixing length experiment	$2(\Delta x \Delta y \Delta z)^{1/3}$	no ($f(a) = 1$)

Table 3. Names of runs we performed in the control experiment. Columns and rows correspond to vertical and horizontal resolutions, respectively. The number following character “AR” represents the grid aspect ratio.

$\Delta x \backslash \Delta z$	5 m	10 m	30 m
10 m	–	10mAR1	–
20 m	–	10mAR2	–
30 m	–	10mAR3	30mAR1
50 m	5mAR10	10mAR5	–
60 m	–	10mAR6	30mAR2
100 m	5mAR20	10mAR10	–
150 m	–	–	30mAR5

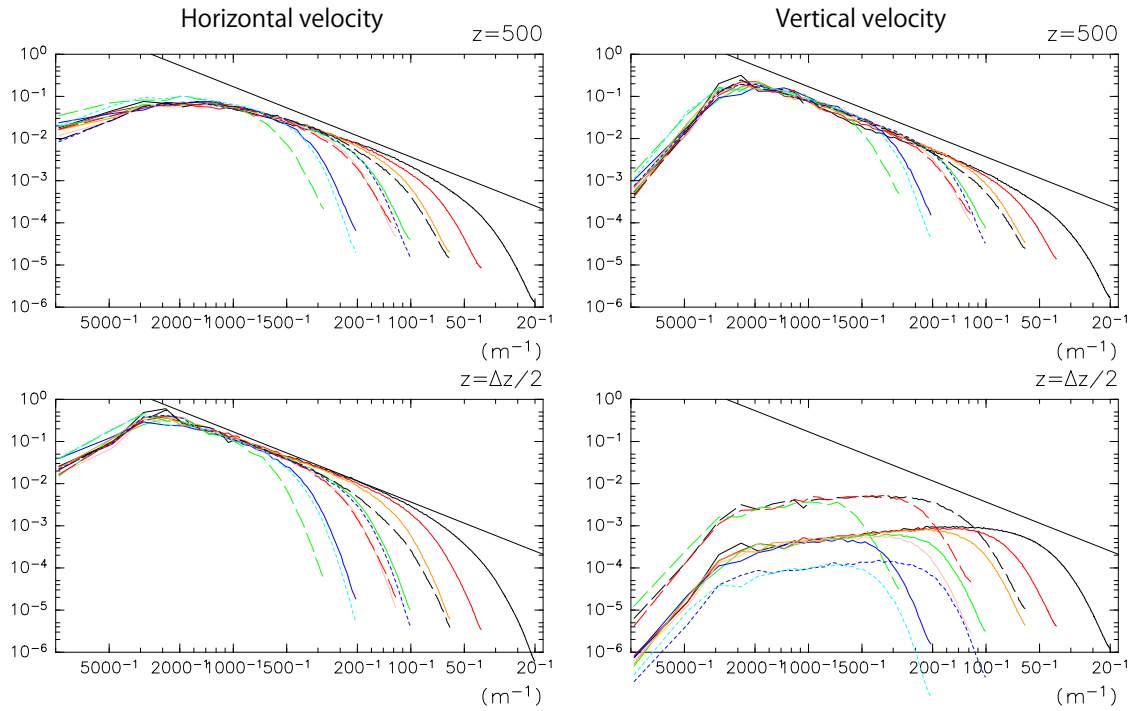


Figure 2. Same as Fig. 1, but spectrum of (left) horizontal and (right) vertical velocity at (top) height of 500 m and (bottom) lowest layer ($z = 2.5, 5,$ and 15 m for $\Delta z = 5, 10,$ and 30 m) in the control experiment.

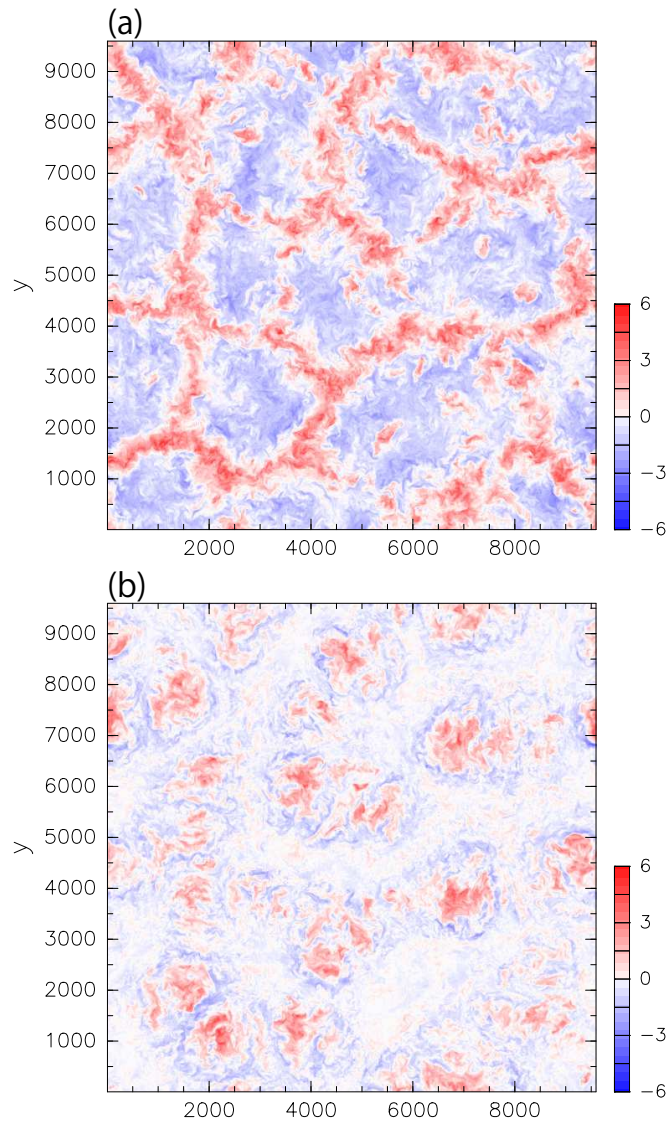


Figure 3. Horizontal cross section of the vertical velocity at (a) 500 m and (b) 1200 m height in the 10mAR1 run of the control experiment.

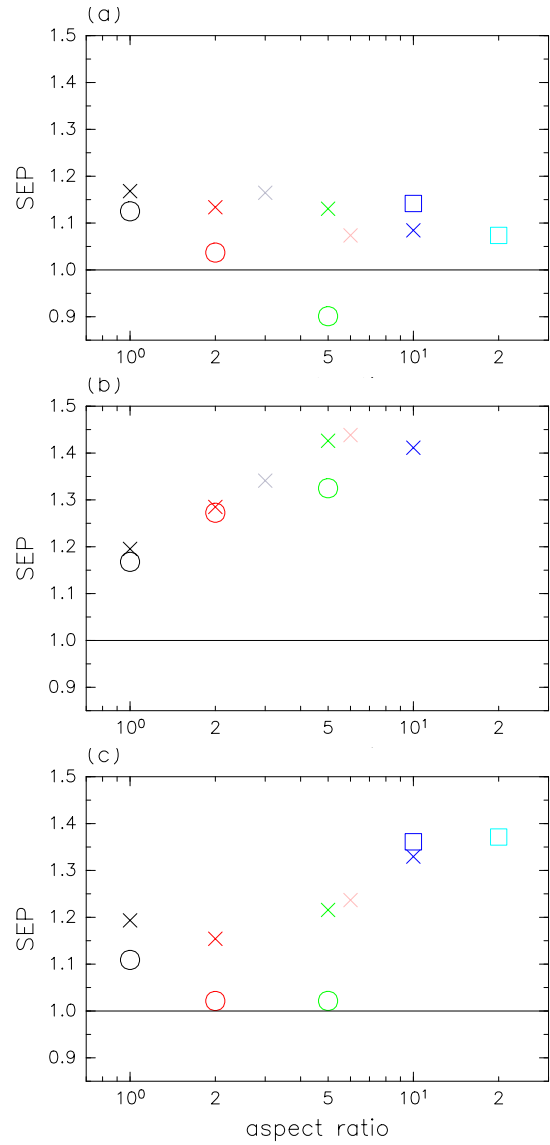


Figure 4. Dependency of the index of energy pile defined in the text on the grid aspect ratio for runs in the (a) control experiment, (b) small filter length experiment, and (c) fixed mixing length experiment. Symbol shows vertical resolution; square, cross, and circle shows 5, 10, and 30 m, respectively. Colors represent the grid aspect ratio as in Fig. 1.

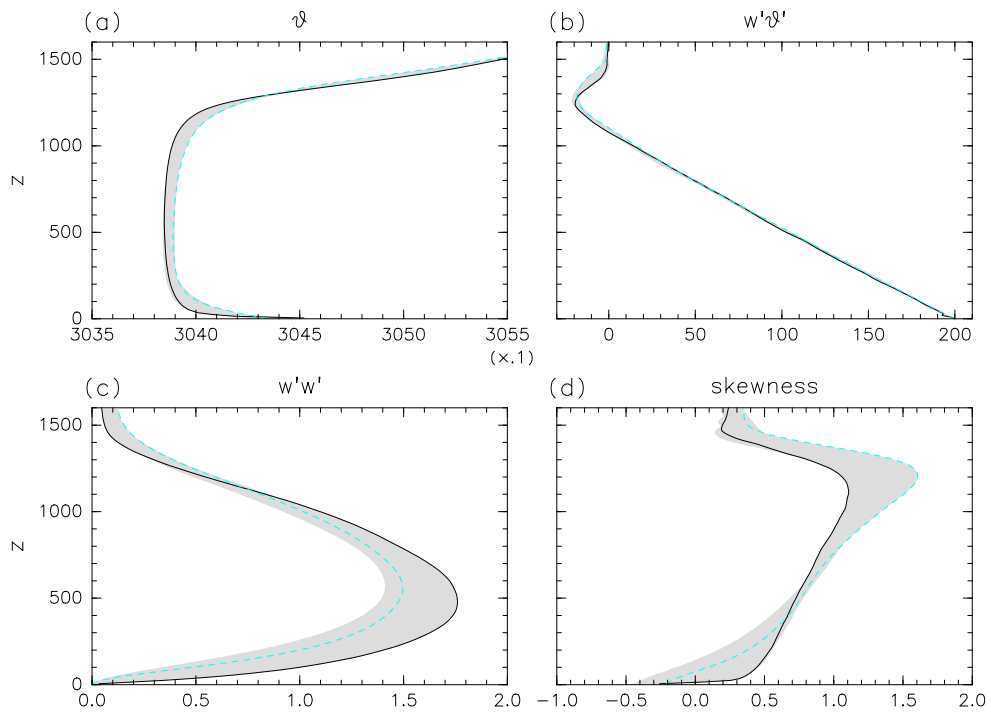


Figure 5. Vertical plots of horizontal mean **(a)** potential temperature [K], **(b)** heat flux [W m^{-2}], **(c)** variance of vertical velocity [$\text{m}^2 \text{s}^{-2}$], and **(d)** skewness of vertical velocity in the control experiment. These values are averaged over $t = 3.5$ to 4 h. Black and cyan lines are results of 10mAR1 and 5mAR20 runs, respectively. Shaded areas represent range between maximum and minimum of all runs in the control experiment.

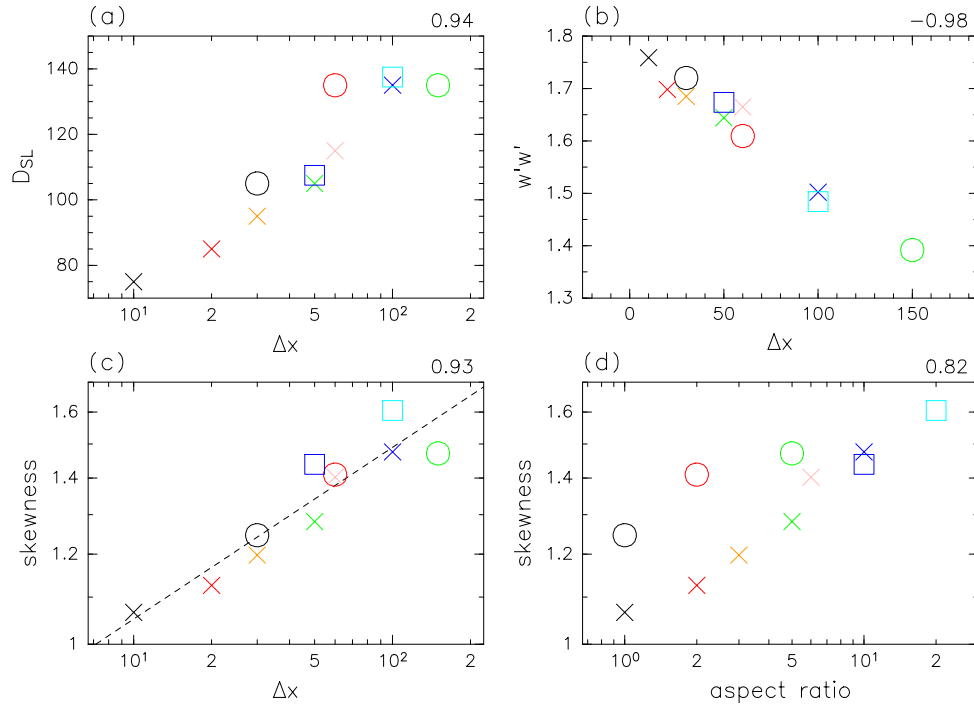


Figure 6. Scatter diagrams between some quantities and grid configurations: **(a)** depth of surface layer vs. horizontal grid spacing, **(b)** variance of vertical velocity at 500 m height vs. horizontal grid spacing, **(c)** skewness of vertical velocity at 1200 m height vs. horizontal grid spacing, and **(d)** skewness vs. grid aspect ratio in the control experiment. Colors and symbols represent grid aspect ratio and vertical resolution, respectively, as in Fig. 4: 1 (black), 2 (red), 3 (orange), 5 (green), 6 (pink), 10 (blue), and 20 (cyan). Squares, crosses, and circles indicate 5, 10, and 30 m, respectively. Value at top right of each diagram is correlation coefficient. Note that the coefficient is calculated with the logarithm of skewness, horizontal grid spacing, and aspect ratio in **(c, d)**. The broken line in **(c)** represents the regression line.

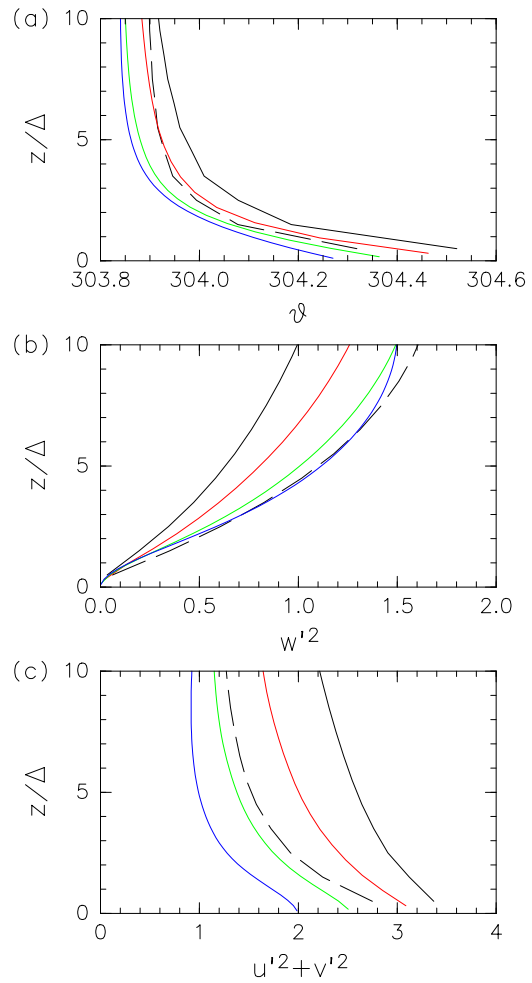


Figure 7. The vertical profiles against z/Δ of (a) the potential temperature, (b) variance of the vertical velocity, and (c) variance of the horizontal velocity in the 10mAR1 (black solid line), 10mAR2 (red solid), 10mAR5 (green solid), 10mAR10 (blue solid), and 30mAR1 (black broken) runs.

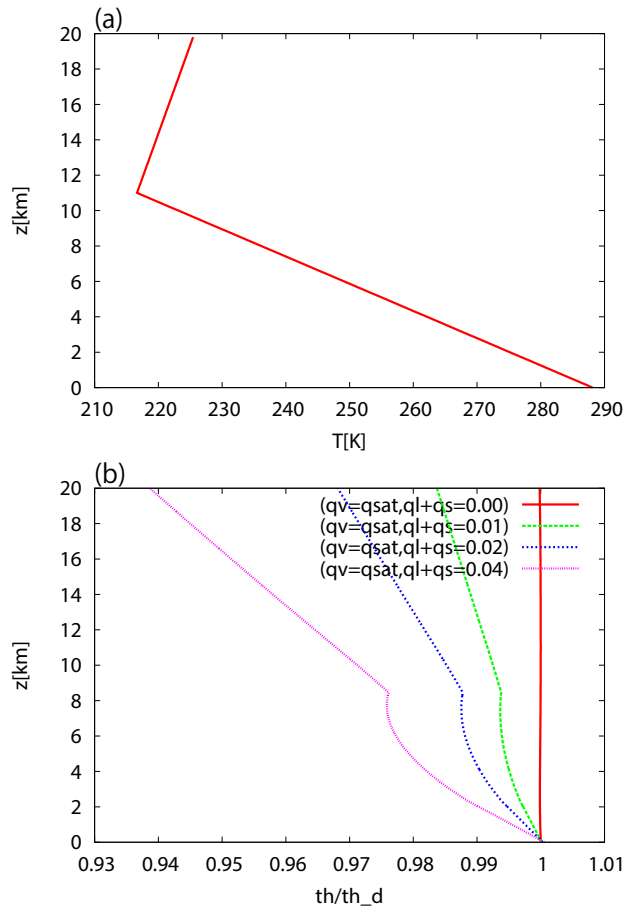


Figure A1. Vertical profile of (a) US standard atmosphere; (b) several profiles of θ/θ_d .

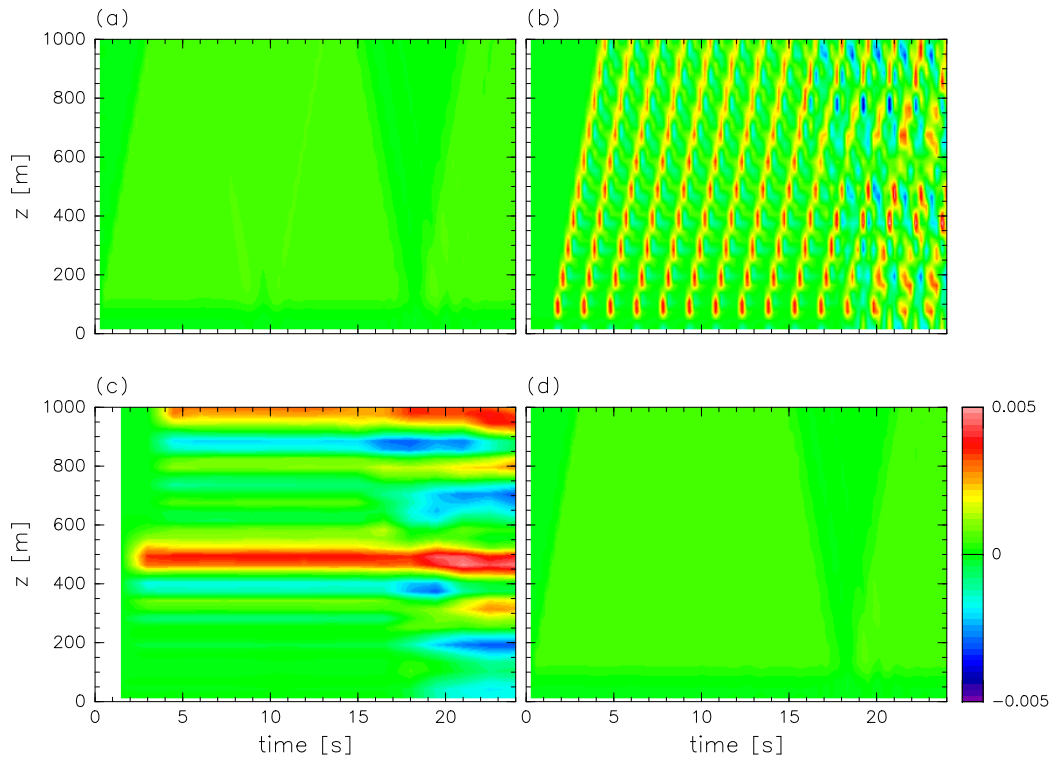


Figure A2. Time–height section of horizontal mean vertical velocity in runs where **(a)** $\Delta t_{\text{dyn}} = \Delta t_{\text{phys}} = 0.03$ s and $\Delta t_{\text{output}} = 0.3$ s, **(b)** $\Delta t_{\text{dyn}} = 0.03$ s, $\Delta t_{\text{phys}} = 1.5$ s, and $\Delta t_{\text{output}} = 0.3$ s, and surface flux is added at large time step intermittently, **(c)** same as **(b)** but $\Delta t_{\text{output}} = \Delta t_{\text{phys}} = 1.5$ s, and **(d)** same as **(b)** but surface flux is added at small time step.

potential temp.

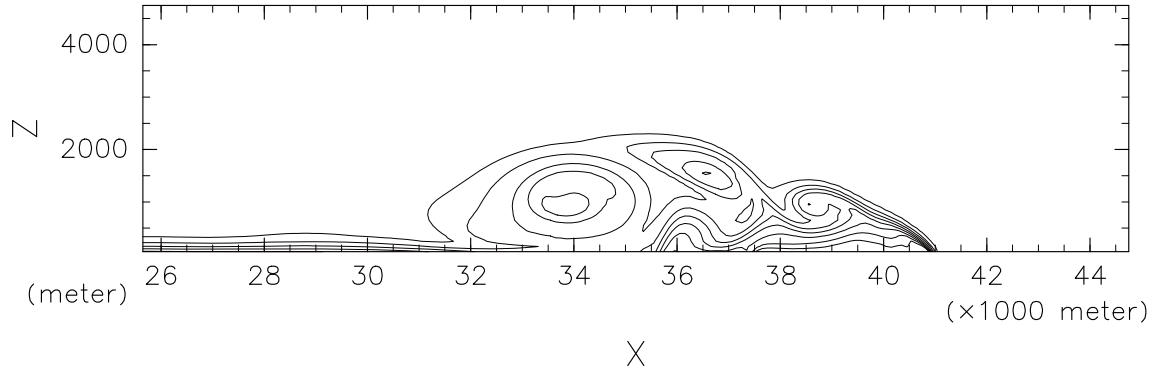


Figure A3. Plot of potential temperature at $t = 900$ s of the 100 m resolution density current experiment. Contour interval is 1 K, and contours are centered around 300 K.

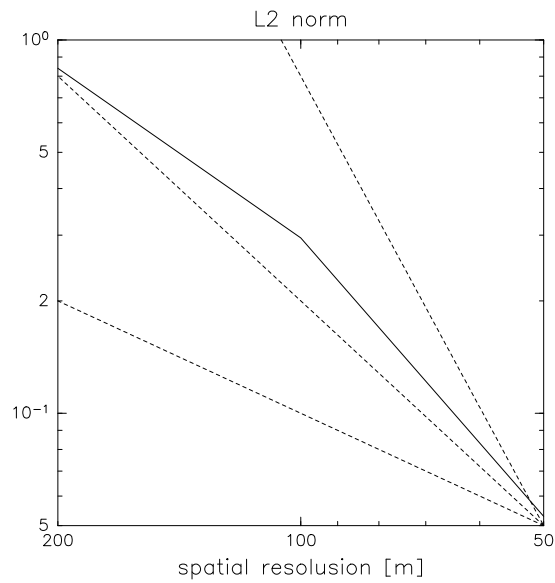


Figure A4. L_2 norm of potential temperature computed against the 25 m resolution experiment. Dashed lines represent first-, second-, and fourth-order convergence.

CERTIFICATE OF ENGLISH EDITING

This document certifies that the paper listed below has been edited to ensure that the language is clear and free of errors. The edit was performed by professional editors at Editage, a division of Cactus Communications. The intent of the author's message was not altered in any way during the editing process. The quality of the edit has been guaranteed, with the assumption that our suggested changes have been accepted and have not been further altered without the knowledge of our editors.

TITLE OF THE PAPER

Influence of grid aspect ratio on planetary boundary layer turbulence in large-eddy simulations.

AUTHORS

S. Nishizawa, H. Yashiro, Y. Sato, Y. Miyamoto, and H. Tomita

JOB CODE

SENS_2_2



Signature

Nikesh Gosalia,
Vice President, Author Services, Editage

Date of Issue
October 15, 2015

Editage, a brand of Cactus Communications, offers professional English language editing and publication support services to authors engaged in over 500 areas of research. Through its community of experienced editors, which includes doctors, engineers, published scientists, and researchers with peer review experience, Editage has successfully helped authors get published in internationally reputed journals. Authors who work with Editage are guaranteed excellent language quality and timely delivery.

CACTUS[®]



Contact Editage

Worldwide

request@editage.com

+1 877-334-8243

www.editage.com

Japan

submissions@editage.com

+81 03-6868-3348

www.editage.jp

Korea

submit-

korea@editage.com

1544-9241

www.editage.co.kr

China

fabiao@editage.cn

400-005-6055

www.editage.cn

Brazil

inquiry.brazil@editage.com

0800-892-20-97

www.editage.com.br

Taiwan

submitjobs@editage.com

02 2657 0306

www.editage.com.tw