

Version Nov 2015. Manuscript to be published in Geoscientific Model Development (GMD)

Modelling the dispersion of particle numbers in five European cities

J. Kukkonen (1), M. Karl (2), M.P. Keuken (3), H.A.C. Denier van der Gon (3), B.R. Denby (4, 9), V. Singh (5,10), J. Douros (6), A. Manders (3), Z. Samaras (6), N. Moussiopoulos (6), S. Jonkers (3), M. Aarnio (1), A. Karppinen (1), L. Kangas (1), S. Lützenkirchen (7), Tuukka Petäjä (8), Vouitsis, I. (6), R. S. Sokhi (5)

(1) Finnish Meteorological Institute, Helsinki, Finland

(2) Helmholtz-Zentrum Geesthacht, Institute of Coastal Research, Geesthacht, Germany

(3) TNO, Netherlands Organization for Applied Research, Utrecht, The Netherlands

(4) Norwegian Institute for Air Research, Kjeller, Norway

(5) Centre for Atmospheric and Instrumentation Research (CAIR), University of Hertfordshire, Hatfield, UK

(6) Aristotle University of Thessaloniki, Thessaloniki, Greece

(7) City of Oslo – Agency for Urban Environment, Oslo, Norway

(8) University of Helsinki, Helsinki, Finland

(9) Norwegian Meteorological Institute, Oslo, Norway

(10) National Atmospheric Research Laboratory, Gadanki, Andhra Pradesh, India

Correspondence to: J. Kukkonen (jaakko.kukkonen@fmi.fi)

Abstract

We present an overview of the modelling of particle number concentrations (PNC's) in five major European cities, namely Helsinki, Oslo, London, Rotterdam and Athens, in 2008. Novel emission inventories of particle numbers have been compiled both on urban and European scales. We used atmospheric dispersion modelling for PNC's in the five target cities and on a European scale, and evaluated the predicted results against available measured concentrations. In all the target cities, the concentrations of PN were mostly influenced by the emissions originated from local vehicular traffic. The influence of shipping and harbours was also significant for Helsinki, Oslo, Rotterdam and Athens, but not for London. The aviation emissions in Athens were also notable. The regional background concentrations were clearly lower than the contributions originated from urban sources in Helsinki, Oslo and Athens. The regional background was also lower than urban contributions in traffic environments in London, but higher or approximately equal to urban contributions in Rotterdam. It was numerically evaluated that the influence of coagulation and dry deposition on the predicted PNC's was substantial for urban background in Oslo. The predicted and measured annual average PNC's in four cities agreed within approximately $\leq 26\%$ (measured as fractional biases), except for one traffic station in London. This study indicates that it is feasible to model PNC's in major cities within a reasonable accuracy, although major challenges remain in the evaluation of both the emissions and atmospheric transformation of PNC's.

1. Introduction

Airborne particulate matter (PM) affects human health and climate (e.g. Smith et al., 2009). While a large base of scientific information exists on particle mass, especially for PM_{10} and $PM_{2.5}$, there are substantially less studies on particle number (PN) and in particular on modelling dispersion of PN's in urban areas (e.g., Kumar et al., 2013). This may be attributed to (i) scarcity of reliable information on emissions, (ii) the greater complexity of physical and chemical atmospheric processes and (iii) lack of monitoring data of PN. The majority of urban particles - in terms of number concentration - are ultrafine particles (UFP), i.e., particles with diameter (D_p) < 100 nm, originating mainly from traffic-related emission (e.g., Morawska et al., 1998). The rapid transformation processes of PN after emissions in ambient air, such as condensation and evaporation, coagulation, dry deposition and dilution pose challenges for dispersion modelling, especially on an urban scale (e.g., Pohjola et al., 2003, Ketzel et al., 2004; Kittelson et al., 2004; Kumar et al., 2011, von Bismarck-Osten et al. 2013). In addition, PN measurement techniques are also more complex and resource-consuming, compared with the measurements of particulate mass fractions.

Although attention on the health effects of particulate matter has been focused on particle mass fractions, a number of studies are indicating that UFP's may have specific health effects. UFP's are poorly filtered in the human respiratory tract after inhalation, and such particles can penetrate the epithelial cells of the lungs and accumulate in lymph nodes (Nel et al., 2006). Epidemiological and toxicological studies show a strong correlation between exposure to ultrafine particles and various health endpoints, such as cardiovascular hospital admission (short-term exposure), mortality (long-term exposure) and neurological effects (Oberdörster et al., 2004; Delfino et al., 2005; Atkinson et al., 2010; Franck et al., 2011; Daher et al., 2013; Loane et al., 2013).

There is a severe lack of representative sets of urban measurements of particle number concentrations (PNC's) that could be used in epidemiological studies, when compared to particle mass. Similarly, the scientific literature is scarce on predicting the dispersion of PN in urban environments. It is therefore necessary to develop and evaluate dispersion modelling systems capable of reliably predicting PNC's.

Combustion is a direct source of UFP's, and secondary particle formation may occur via atmospheric reactions and condensation of semi-volatile components produced in photochemical reactions (Kulmala et al. 2013, Kulmala et al. 2014, Kumar et al., 2014). Combustion of carbon-based fuels for power generation, heating and transport are important sources for PN emissions (Shi et al., 2001; Obaidullah et al., 2012; Kittelson et al., 2006; Maricq, 2007; Buzea et al., 2007; Kumar et al., 2013; Pant and Harrison, 2013, Keuken et al., 2015a and b). In most European cities, road traffic emissions of PN are expected to be the most important source for exposure of the population, due to the near-ground emissions and the vicinity of road traffic to populated areas.

The importance of aerosol processes has been analyzed via aerosol process time scales by Zhang and Wexler (2004) and Ketzel and Berkowicz (2004), and with aerosol dynamics model simulations by Jacobson and Seinfeld (2004). Pohjola et al. (2003) simulated the transformation and dilution of particulate matter on distance scale of less than 100 m from a road in an urban area. As expected, dilution was found to be the most important process affecting the PNC's; however, condensation of an insoluble organic vapour was also found to be important, if its concentration exceeds a certain threshold value. Ketzel and Berkowicz (2004) evaluated that the influence of dry deposition would be irrelevant on an urban time scale. Kerminen et al. (2007) evaluated that coagulation, condensation and evaporation could be important in conditions, where dilution with cleaner background air is restricted.

Small-scale combustion may also be a prominent source of PNC's in winter (Glasius et al., 2008). Elevated levels of PN have also been found in specific areas, such as, near harbors, refineries and in particular near airports (González and Rodríguez, 2013; Westerdahl et al., 2008; Zhu et al., 2011; Keuken et al., 2012; Hsu et al., 2014). Whereas most of the state-of-the-art chemical transport models include treatments for aerosol size distributions and microphysics (Kukkonen et al., 2012), such treatments are substantially less commonly included in urban scale models. There are currently very few models, which are especially designed to predict particle number concentrations by taking into account particle dynamics. Kumar et al. (2012) presented a review on the importance of aerosol transformation processes at various urban scales and environments.

A first European size-resolved anthropogenic PN emission inventory was compiled in the framework of the EU-funded EUCAARI project (Denier van der Gon et al., 2010). Consolidated emission factor data bases (e.g., COPERT, PARTICULATES and TRANSPHORM) have recently become available to establish PN emission inventories in Europe; these have been reviewed by Kumar et al. (2014). According to the inventory by Paasonen et al. (2013), for the 28 EU countries in 2010, road transport contributed over 60 % of the total PN emissions, non-road transport (including partly also shipping) 19 % and domestic combustion 13 %.

The first stage between the point of emission (vehicle tailpipe) and the kerbside is characterized by strong turbulence generated by the moving vehicles. According to Zhang and Wexler (2004), the initial stages of dilution within a few first seconds would be accompanied with nucleation. On-road measurements by Rönkkö et al. (2007) demonstrated that the nucleation mode was already present after 0.7 s residence time in the atmosphere. However, the modelling of nucleation will require detailed information about the environmental conditions very near the tailpipe (e.g., temperature gradient, and chemical composition and concentrations of volatile nucleating vapours). Nucleation mode particles grow rapidly by condensation of high-molecular weight low-volatile hydrocarbons from the unburned lubrication oil and sulphur compounds (Kittelson et al., 2006).

In the second stage between the street and a few hundred meters away from the street, atmospheric turbulence, induced by wind and atmospheric instability, is the main cause for dilution of particle concentrations. In this stage, condensation/evaporation and dilution become the major mechanisms in altering the particle size distribution, while coagulation and deposition play minor roles (Zhang et al., 2004). In the third stage, between street canyon/street

neighborhood and the urban background, the number size distribution is altered by multiple processes, such as dilution with cleaner air, entrainment of polluted air, condensation of vapors, oxidative ageing, and coagulation of particles (e.g., Wehner et al., 2002).

Asmi et al. (2011) examined aerosol number size distribution data from 24 European field monitoring sites in 2008 and 2009. The data was collected from the stations at the EUSAAR (European Supersites for Atmospheric Aerosol Research) and GUAN networks (German Ultrafine Aerosol Network), and represented mainly regional background or remote locations. They categorized the aerosol to several types: central European aerosol, Nordic aerosol, mountain sites and southern and western European regions, and analyzed the seasonal characteristics and patterns of the various size modes.

Hussein et al. (2007) and Pohjola et al. (2007) conducted a field measurement campaign near a major road in an urban area in Helsinki in February, 2003. Measured PNC data at various distances from the road was compared with dispersion and aerosol process model predictions. A similar measurement campaign was conducted downwind of a motorway in Rotterdam (Keuken et al., 2012). Size-resolved PNC measurements were compared with dispersion modelling and an aerosol process model (Karl et al., 2011). Both these studies concluded that dilution was shown to be the most important process.

Gidhagen et al. (2005) implemented a three-dimensional dispersion model in Stockholm and presented the spatial distribution of number concentrations over the whole city. Typical number concentrations in the urban background of Stockholm were $10\,000\text{ cm}^{-3}$, and approximately three times higher close to a major highway and seven times higher within a densely trafficked street canyon. Coagulation was found to contribute to losses of PNC's of only a few percent as compared to inert particles, while including dry deposition resulted in PNC losses of up to 25% in certain locations. However, removal of PN's due to coagulation and deposition was more significant during peak episodes.

This study is part of the European Union funded research project TRANSPHORM (Transport related Air Pollution and Health impacts - Integrated Methodologies for Assessing Particulate Matter). This project was one of the very few international projects, where dispersion models have been developed and applied to predict spatially and temporally resolved concentrations of PN for exposure and health applications (www.transphorm.eu). The cities Helsinki, Oslo, Rotterdam, London and Athens were involved to test the methodologies developed within the TRANSPHORM project at an urban scale. These cities were selected in order to include at least one major urban agglomeration from the following regions: (i) the Nordic countries (Helsinki and Oslo), (ii) the central and north-western Europe (Rotterdam and London) and (iii) the Mediterranean region (Athens).

Health studies for PN are scarce, and currently there are only concentration-response functions based on expert judgment. According to Hoek et al. (2010), there will be a 0.3 % increase in all-cause mortality per 10^3 particles per cm^3 . Source-exposure functions for PN have also been presented by Stolzel et al. (2007) and Atkinson et al. (2010). Von Klot et al. (2005) underlined similar effects for hospital re-admissions of a susceptible population, in cases, for which the aerosol number increased 10^3 particles per cm^3 or aerosol mass by $10\text{ }\mu\text{g m}^{-3}$. However, in view

of the potential health effects for exposure to PNC's, there is a need to combine epidemiological data and PNC's with a high spatial resolution.

The aim of this article is to present an overview of the modelling of PNC's on an urban scale in five major European cities, presented in Fig. 1: Helsinki, Oslo, Rotterdam, London and Athens. The target cities represent megacities, such as London (population of approximately 8.3 million) and Athens (we address here Greater Athens, 3.5 million), and other major cities, such as Helsinki Metropolitan Area, Oslo and Rotterdam (populations of 1.0, 0.6 and 0.6 million, respectively). For simplicity, we refer to Helsinki Metropolitan Area simply as 'Helsinki' in the following. The primary year used in the computations is 2008. The modelling of PNC's for these cities has been presented in the present article for the first time. The previous literature also does not contain any compilations of PNC modelling for several cities.

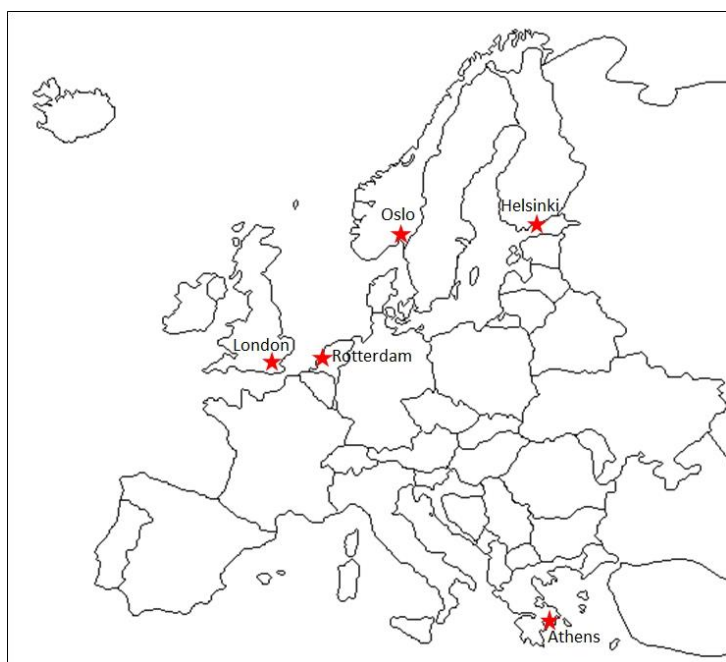


Fig. 1. The target cities of this study.

We address emission inventories and emission modelling of PN, dispersion modelling of PNC's, numerical results on the annual average spatial distributions in the target cities and evaluation of the predicted results against measured PNC's. The main scientific goals were (i) to evaluate the capability of models to predict PNC's in several European cities, (ii) to examine the predicted spatial characteristics of PN in the selected cities, (iii) to evaluate the contributions of various source categories on the concentrations, and (iv) to highlight areas of improvements in modelling PN for health based studies.

2. Modelling methods

In this section the computational methods are presented, which were used for the evaluation of PNC's in the five target cities. We address both the methods for the evaluation of emissions, and the atmospheric dispersion modelling systems. For practical reasons, it was not possible to completely harmonize the computations, by using only one modelling system for all the cities. All of the urban emission and dispersion modelling systems were therefore locally or nationally developed ones; these were different for each city. However, the regional background concentrations for all the urban scale modelling systems were computed with the same model, the LOTOS-EUROS chemical transport model (Schaap et al., 2008). We have therefore also briefly discussed a new European-scale emission inventory used as input for the above mentioned regional scale chemical transport model.

2.1 Overview of the PNC computations in the target cities

For readability, selected summary information has been presented in Table 1 on the urban scale computations. The more detailed information will be presented in the following sections.

Table 1. Overview information on the computational methods and the evaluation of predictions in the five target cities for 2008.

	Helsinki	Oslo	Rotterdam	London	Athens
Traffic flows and urban scale emissions	Traffic planning model, vehicular emission factors based on Gidhagen et al.(2005), shipping emission model STEAM2	Local traffic data, TRANSPHORM emission database (Vouitsis et al., 2014) with temperature correction, STEAM2	Local traffic data, COPERT IV (Gkatzoflias et al., 2012) and TRANSPHORM emission database	Local traffic data, emission factors from Jones and Harrison (2006)	Local traffic data, TRANSPHORM emission database, Petzold et al. (2010) and (Lee et al, 2010).
Meteorological data and its pre-processing	Meteorological pre-processor model MPP-FMI, based on measured sounding data and other data from two stations	Diagnostic wind field model, based on measured data at two sites	Measured data from local airport	Meteorological pre-processor model GAMMA-met, based on measured data at one station	Prognostic model MEMO, based on measured data at one location
Urban source categories included	Vehicular traffic, importance of shipping and major stationary sources separately evaluated	Vehicular traffic, shipping, small-scale combustion, industry, other sources	Vehicular traffic, shipping, airports and refineries included in the regional background	Vehicular traffic, all the sources influencing urban background	Vehicular traffic, shipping, aviation, stationary sources
Regional or urban background concentrations and their evaluation	Urban background values measured at an urban background station	LOTOS-EUROS, regional background values at the grid squares that surround the city, scaled using measured regional background values	LOTOS-EUROS, regional background values at a grid square that surrounds the city	LOTOS-EUROS, regional background values at grid squares that surround the city	The measured regional background PNC values by Kalivitis et al. (2008). The values of other relevant compounds were extracted from LOTOS-EUROS at grid squares surrounding the city
Urban modelling system	CAR-FMI, PN treated as tracer	EPISODE, Aerosol process parameterisation included	URBIS:street-canyon and line-source models; PN treated as tracer	OSCAR, PN treated as tracer	MARS-aero, PN treated as tracer
Evaluation of predictions against measured concentrations	At one measurement station for one year	At two measurement stations, for three months	At two measurement stations for one year	At two measurement stations, for one year	Measurements were not available for 2008

The TRANSPHORM project emission database was used on an urban scale in three of the target cities. Two urban modelling systems applied a meteorological pre-processing model, two others other meteorological models, and one modelling system applied directly measured data. All the models included the emissions from vehicular traffic. The shipping emissions were explicitly included in the computations of Oslo, Rotterdam and Athens, and the importance of primary shipping emissions was separately evaluated for Helsinki (Soares et al., 2014). For London, the local scale shipping emissions were not taken into account, as its importance was found to be negligible. Several of the models included also the emissions from major and/or small-scale stationary sources and other source categories.

The urban scale emission and dispersion modelling systems were specific for each target city. All of the urban dispersion modelling systems used for Helsinki, Oslo, London and Rotterdam are multi-source Gaussian dispersion and transformation systems. These can also allow for dispersion in street canyons; however, these street canyon dispersion models were not used in this study (except for using the semi-empirical street canyon model for Rotterdam). The modelling system for Athens is based on the combined use of a meteorological model and a chemical transport model. All these modelling systems have previously been extensively evaluated against experimental data.

Regional background concentrations of PN were derived from the LOTOS-EUROS model computations for three target cities (Oslo, London and Rotterdam), based on the predicted values at grid squares that surrounded these cities. For obtaining an improved accuracy of the computations, we used measured values for the urban or regional background for Helsinki and Athens, respectively. The predicted LOTOS-EUROS regional background values were scaled, using the ratios of measured and predicted annual average concentrations, for Oslo and London.

The aerosol transformation processes were taken into account in the LOTOS-EUROS computations. Measured PNC data was available in four of the cities, in three of these for a complete year; however, only at one or two measurement stations for each city.

2.2 Emission inventories

We describe in this section both a new European scale emission inventory and the urban emission inventories in the five target cities.

2.2.1 European-scale emission inventory

A new emission inventory was compiled for the EU-wide anthropogenic transport activities, supplemented by the anthropogenic non-transport activities. In addition to this anthropogenic emission inventory, we included various natural emission sources in the LOTOS-EUROS computations. These included sea spray aerosol emissions, and the dust emissions from road suspension, agriculture and bare soils. These were modelled as described by Schaap et al. (2009).

The baseline emission data in the anthropogenic emission inventory contains the following substances: NO_x, SO₂, non-methane volatile organic compounds (NMVOC), CH₄, NH₃, CO, PM₁₀, PM_{2.5}, EC (elemental carbon), B[a]P (benzo[a]pyrene) and PN (Denier van der Gon et al., 2014). The anthropogenic PN inventory includes particles in the size range of 10-300 nm.

The emission data can be calculated for the individual countries; the official UN ISO3 Country Codes were used. We have used three groups of countries. The EU15+ group is defined to include EU15, and Norway and Switzerland. The EU12+ group contains the New Member States, Malta and European Non-EU countries; the latter refers to the other European countries in the United Nations Economic Commission for Europe domain. The EU27+ group consists of EU15+ and EU12+. Emissions from international shipping have been estimated for the various European sea regions.

The first European particle number emission inventory was made in the EU FP6 project EUCAARI (Denier van der Gon et al., 2010a; Kulmala et al., 2011). This inventory was used as a starting point for the present study. For the different transport modes (road, rail, air and maritime navigation), a new bottom-up PN emission estimate was made, including also technologies and activities in the future years, 2020 and 2030.

The above mentioned PN emission inventory includes only anthropogenic sources; the emissions from mainly natural sources such as, e.g., wild-land fires, windblown dust and sea salt are not included. The inventory also does not include vegetation related emissions (e.g., Guenther et al. 1995), or the formation of PNC's from biogenic VOC's (e.g., Paasonen et al. 2012).

The above mentioned emission inventory describes internally mixed PN emissions originated from several source categories in 12 size bins, covering the particle dry diameter range from 10 to 250 nm. The LOTOS-EUROS model in combination with the M7 module uses the PN emission as input; that is converted into the Aitken and accumulation modes used in the M7 module. The M7 module additionally requires the associated masses of black and organic carbon, sulfate and mineral dust, and a division to soluble and insoluble material. Using the sulfate content of the internally mixed particles as a proxy, the PN concentrations were attributed to the soluble and insoluble modes.

2.2.2 Urban-scale emission inventories in the target cities

Emission inventory for Helsinki

The emission inventory included exhaust emissions from vehicular traffic for the network of roads and streets in the Helsinki Metropolitan Area (HMA). The traffic volumes and average travel speeds of each traffic link were computed using the EMME/2 transportation planning system (INRO, 1994). Traffic volume data in 2008 was used as input for the estimation of annual average road traffic emissions in the HMA. The final emission inventory consisted of average hourly emissions for each line source over the year, separately for weekdays, Saturdays and Sundays.

The emission factors for vehicular traffic determined by Gidhagen et al. (2005) in Stockholm have been used. The emission factors corresponding to Stockholm were used, as these were estimated to optimally correspond to the climatic and traffic conditions in Helsinki. These values are $2.70 \cdot 10^{15}$ particles/vehicle/km and $1.8 \cdot 10^{14}$ particles/vehicle/km for heavy and light-duty vehicles, respectively. These values were determined for driving speeds less than 70 km/h; however, we have applied these values for all urban roads included in the computations.

In addition to the computations for 2008, we computed the PNC's at the roadside traffic station at Ring road 1, Malmi (called simply as 'Ring road 1' in the following) in 2012, for model evaluation purposes. For the hourly computations in 2012, the 2008 traffic volume data was scaled using the ratio of the total vehicular mileages (km/a) in the HMA in 2008 and 2012. These mileage values were obtained from the national traffic emissions data archive LIPASTO (<http://lipasto.vtt.fi/indexe.htm>).

The importance of the shipping emissions was evaluated based on Soares et al. (2014). They showed using the STEAM2 shipping emission modelling (Jalkanen et al., 2012; Johansson et al., 2013) that the contribution of primary shipping emissions of to the concentrations of $PM_{2.5}$ are only 3 % on the average in the Helsinki Metropolitan Area. However, this contribution can be higher than 20 % in the vicinity of the harbours (within a distance of approximately one kilometer).

Emissions from stationary sources were not included. However, major stationary sources in the area (these are mostly power plants) have previously been shown to have negligible effect on the $PM_{2.5}$ concentrations near the ground level in Helsinki (Kauhaniemi et al., 2008); the same was assumed to be valid also for PNC's. Emissions from small-scale combustion were not taken into account, as their spatial distribution was not known with sufficient accuracy. The contribution of small-scale combustion to the total $PM_{2.5}$ emissions in Helsinki Metropolitan Area has been estimated to be 23 % in 2009 (Malkki et al, 2010). The emissions of $PM_{2.5}$ originated from aviation in the Helsinki Metropolitan Area were about 17 % of the total road traffic $PM_{2.5}$ emissions in the area in 2008.

Emission inventory for Oslo

Emission factors for traffic exhaust (measured at an ambient temperature of +33 °C) were extracted from the emission database of the TRANSPHORM project (Vouitsis et al., 2014). Emission factors for PN in Oslo and in other studies (Klose et al., 2009; Olivares et al., 2007) have been found to have a significant dependence on ambient air temperature. A dependence of -3%/K has been applied to the Oslo traffic emissions, leading to significantly higher emission factors in the cold winter period (approximately double) than those provided in the emissions database.

Shipping emissions were based on the STEAM2 emission model (Jalkanen et al., 2012; Johansson et al., 2013). Emissions for PN were based on the CO_2 emissions, converted firstly back to fuel consumption, and then PN emissions were calculated using an emission factor of

1 1×10^{16} particles/(kg fuel), recommended by Petzold et al. (2010). Shipping emissions were
 2 evaluated in a domain of $29 \times 18 \text{ km}^2$ and thus only included shipping in the Oslo fjord area.

3
 4 Domestic heating emissions of PN, due mostly to wood burning, were calculated based on a
 5 previously compiled $\text{PM}_{2.5}$ inventory. A conversion factor of 4×10^{14} particles/(g $\text{PM}_{2.5}$) emitted
 6 was used to convert $\text{PM}_{2.5}$ emissions to PN emissions, based on the data presented in Hedberg et
 7 al. (2002). Other emissions concerning combustion sources, i.e. agricultural, industrial and
 8 mobile sources use the existing $\text{PM}_{2.5}$ emissions inventory and convert to PN using a ratio
 9 similar to diesel truck emissions; a conversion factor of 3×10^{15} particles/(g $\text{PM}_{2.5}$) was applied.
 10

11 **Emission inventory for Rotterdam**

12 Road traffic data and road characteristics were obtained from a national database ([www.nsl-](http://www.nsl-monitoring.nl)
 13 [monitoring.nl](http://www.nsl-monitoring.nl)). Road traffic data contains information about the number of vehicles, speed,
 14 congestion and fleet composition in-between traffic links for every major road and motorway in
 15 Rotterdam. The road characteristics refer to, e.g., the width and height of buildings along the
 16 road.

17
 18 The following emission factors from COPERT IV (Gkatzoflias et al., 2012) and the
 19 TRANSPHORM database have been applied: (i) for motorway traffic, 10^{15} particles $\text{km}^{-1} \text{veh}^{-1}$
 20 for heavy and light duty vehicles, and 0.3×10^{15} particles $\text{km}^{-1} \text{veh}^{-1}$ for passenger cars, and (ii) for
 21 urban road traffic, 0.5×10^{15} particles $\text{km}^{-1} \text{veh}^{-1}$ for heavy and light duty vehicles and buses, and
 22 0.3×10^{15} particles $\text{km}^{-1} \text{veh}^{-1}$ for passenger cars.

23
 24 As mentioned above, two composite emission factors were used for passenger cars, one for
 25 motorway traffic, and the other one for traffic in urban roads. This was necessary, as the
 26 available traffic flow data was also in composite form, including a value for each street for each
 27 of the following vehicle categories: passenger cars, lorries and busses. The assumption of
 28 composite emission factors implies that the fractions of passenger cars equipped with diesel,
 29 petrol and vehicle technologies are not spatially variable within the city. However, these
 30 composite emission factors take into account, e.g., the differences between the emission factors
 31 of cars using gasoline and diesel fuels.
 32

33 Airports and refineries can be potentially important sources for PN emissions (Keuken et al.,
 34 2015a, b). However, the Airport Rotterdam is a relatively small airport. E.g., the annual average
 35 number of passengers is smaller than 10 % of that of the main airport in the Netherlands, the
 36 Schiphol Airport in the vicinity of Amsterdam. Major refineries are located at a distance of 10
 37 km west of the modelling domain. Both the emissions from the Airport Rotterdam and refineries
 38 have therefore been included in the regional background.
 39
 40

Emission inventory for London

The road traffic data for London have been obtained from London Atmospheric Emission Inventory (LAEI; GLA, 2010). Each road link was characterised by the amount of vehicles per day per vehicle category and mean speed. The traffic activity data were disaggregated by vehicle categories such as motorcycles, cars including taxis, buses, light goods vehicles (LGV) and heavy goods vehicles (HGV). The HGV's are further subdivided into articulated HGV's and rigid HGV's categories. The fleet compositions have been further subdivided as per fuel type, weight, engine size and emission standards.

The emission model in current version of the OSCAR system commonly uses the emission functions and factors based on COPERT IV (Gkatzoflias et al., 2012) and Department for Transport (DfT) emission data base. However, due to the unavailability of emissions in that database for PN's, emission factors from Jones and Harrison (2006) have been used in this study.

According to the LAEI (GLA, 2010), the most important source categories of PM_{10} in London in 2015 were road transport, agriculture-nature and industrial processes. The PM_{10} emission from shipping was only 2 ton/year, which is a negligible fraction (0.08 %) of total emissions. We therefore neglected the influence of shipping in the case of London.

Emission inventory for Athens

For Athens PN emissions included vehicular traffic, shipping and aviation. Emission factors for traffic exhausts were taken from the TRANSPHORM emission database (Vouitsis et al., 2014). Emissions from shipping and the major ports, and airport emissions were calculated on the basis of the operational action plan for air pollution management in Athens. This plan was developed for 2004, using activity and fuel consumption data (Samaras et al., 2012). The emission factor used for shipping was 10^{16} particles/(kg fuel) according to Petzold et al. (2010), and for aviation $6 \cdot 10^{14}$ particles/(kg fuel), assuming a fuel sulphur content of 1000 ppm (Lee et al, 2010).

2.3 Dispersion and transformation modelling

First, we address the dispersion modelling on a continental scale, which provided the regional background concentrations for urban dispersion modelling. Second, we discuss the urban scale dispersion modelling systems used in the five target cities.

2.3.1 Chemical transport modelling on a European scale

The chemistry-transport model LOTOS-EUROS (Schaap et al., 2008) was used in this study to evaluate the regional background PNC's. Compared with other widely used chemical transport models in Europe, reviewed by Kukkonen et al. (2012), the model is of intermediate complexity. The relevant processes have been parameterized in such a way that the computational demands

are modest. The LOTOS-EUROS model has been included in several international model inter-comparison studies that have addressed the dispersion and transformation of ozone and particulate matter (e.g., Stern et al., 2008 and Solazzo et al., 2012). The model performance has in these model inter-comparisons been comparable with other European chemical transport models.

The M7 aerosol microphysics module (Vignati et al., 2004) was coupled to the LOTOS-EUROS model. This module accounts for nucleation and condensation of H_2SO_4 , and coagulation of particles. The default nucleation scheme originally based on Vehkamäki (2002) was replaced by the activation type parameterization of Kulmala et al (2006), which is better suitable for the boundary layer.

Formation of H_2SO_4 was based on the default gas-phase chemistry of LOTOS-EUROS, using emission inventories provided by the MACC project (TNO-MACC emission inventory; Pouliot et al., 2012) and the TRANSPHORM emission inventories. The PN emissions were converted to values that are compatible with the M7 module, using assumptions on the chemical composition of particulate matter (cf. section 2.2.1).

Although the size range of the anthropogenic emissions was assumed to be from 10 to 300 nm, the dispersion computations were performed for the size range from 10 to 1000 nm. There are several reasons for the relatively wider size range of the dispersion computations. First, due to condensation and coagulation, particles may grow to larger sizes than 300 nm. Second, small particles interact with larger particles (even larger than 300 nm); the latter can be originated from natural sources, such as, for instance, sea salt. The structure of the M7 model also includes the Aitken and accumulation size modes, with no strict separation at 300 nm.

Two sets of simulations for Europe were made. (i) The first set was based on the meteorology of 2008, and was used for model evaluation. This set had a 0.5×0.25 longitude-latitude grid, for a European domain from 15 W to 35 E and from 35 to 70 N. The concentrations for particle number were assumed to be negligible at the boundaries of the domain. (ii) The second set of simulations was performed for the meteorology and the emissions of 2005. Additional simulations were performed for each target city, on a finer 0.125×0.0625 longitude-latitude grid, for each city in a domain that covered an area of $3^\circ \times 1.5^\circ$, using the European-scale simulation for boundary conditions.

There are several processes that contribute to uncertainties in the model results. Nucleation mode particles contribute substantially to the total particle numbers. However, several parameterizations for nucleation processes are available, and it is not in all cases clear, which are the optimal ones. The uncertainties associated with the modelling of particle nucleation have mainly an impact on the number concentration of particles smaller than 100 nm (e.g., Fountoukis et al., 2012).

Some atmospheric species are not represented in the M7 module. For example, secondary aerosol formation from biogenic emissions (such as, isoprene and terpene) is not taken into account. Riipinen et al. (2011) investigated the role of condensable vapours on the growth of freshly nucleated particles until the cloud condensation nuclei size, and proposed a semi-

empirical modelling approach. Secondary organic vapours can condense on existing particles, and thus contribute to their growth. This process increases the probability of such particles to reach the sizes that are cloud condensation nuclei (CCN) active, before getting scavenged by the background particle population. Secondary organic aerosol from biogenic origin therefore may substantially contribute to the PCN's.

The emissions of condensable gases from combustion processes are also not taken into account in the modelling; these could potentially contribute, e.g., in areas with substantial residential wood burning. In regions with intensive NH_3 emissions (e.g., from agriculture and animal husbandry), the impact of secondary inorganic aerosol may be significant on number and size distribution of particulate matter; this is not accounted for in the M7 module (Vignati et al., 2004).

The omission of biogenic secondary aerosol causes inaccuracies to the PM size distribution. The inaccuracies are the largest in the case of the smallest particles. The modelled sum of the Aitken and accumulation mode particle number concentrations are therefore considered the most appropriate quantity to represent regional background PNC's in this study (compared with using the number concentration of the nucleation mode particles).

2.3.2 Urban scale dispersion modelling

For each modelling system, we address (i) the urban dispersion modelling system and its implementation, (ii) the evaluation of meteorological variables (used as input for the urban modelling), and (iii) the assessment of regional background concentrations.

Dispersion modelling for Helsinki

The urban scale dispersion of vehicular emissions was evaluated with the CAR-FMI model (Contaminants in the Air from a Road – Finnish Meteorological Institute; Kukkonen et al., 2001, Härkönen et al., 1996). The model computes an hourly time-series of the pollutant dispersion from the line source. The dispersion equation for the line source model is based on a semi-analytical solution of the Gaussian diffusion equation for a finite line source. The dispersion parameters are modelled as a function of the Monin-Obukhov length, the friction velocity and the mixing height. Traffic-originated turbulence is modelled with a semi-empirical treatment.

The receptor grid intervals range from 20 m in the vicinity of major roads to 500 m on the outskirts of the area. The concentration values were computed at 18 692 receptor points.

Input data needed by the dispersion model was evaluated using a meteorological pre-processing model (MPP-FMI) that has been adapted for an urban environment (Karppinen et al., 2000c). The MPP-FMI model is based on the energy budget method of van Ulden and Holtslag (1985). The model utilises meteorological synoptic and sounding observations, and its output consists of estimates of the hourly time series of the relevant atmospheric turbulence parameters and the boundary layer height. The computation is based on a combination of the data from the stations

at Helsinki–Vantaa airport and Helsinki-Kumpula (3-hour synoptic weather observations), and Jokioinen (soundings).

The urban background concentrations of PN both for 2008 and 2012 were estimated to be equal to the measured hourly values at an urban background measurement site located at Kumpula in Helsinki. This station is part of the network of stations called “Station for Measuring Ecosystem – Atmosphere Relations”, SMEAR-III (Järvi et al., 2009). This data contained PNC’s in the particle size range from 3 to 950 nm. The measurements and data analysis were conducted according to Wiedensohler et al. (2012). For the computations in Helsinki, we therefore did not use the regional background concentration values predicted by the LOTOS-EUROS model.

Dispersion and particle transformation modelling for Oslo

Calculations of concentrations were carried out using the EPISODE dispersion model (Slørdal et al., 2003), which is part of the integrated air quality management tool AirQUIS (Slørdal et al., 2007). The EPISODE model consists of a gridded Eulerian model coupled with a Gaussian line source model for modelling the local contribution at receptor points near roads. The Eulerian grid model uses a $1 \times 1 \text{ km}^2$ grid covering Oslo. There are 13 vertical layers in the model, up to the height of 4000 m, with the lowest layer being 10 m thick. Emissions from traffic sources are placed in the lowest layer, whilst emissions from domestic heating, industry and shipping are placed in the layers between 10 and 35 m.

Receptor points within 500 m of a road include line source calculations, using the Gaussian line source model in EPISODE, otherwise only the Eulerian model contributes. The model coupling leads to a double counting of the emissions near roads, which has been estimated to contribute a maximum increase of 5 - 20% to the model concentrations at receptor points near roads. The receptor points are placed at monitoring sites, and at aggregated home addresses, at the centre of population mass within a $100 \times 100 \text{ m}^2$ grid.

The air pollution originated in vehicular traffic tunnels has been modelled assuming that there has been no deposition of particles within the tunnels. The tunnel exits are therefore treated simply as exit points of polluted air.

Meteorology is generated in the model using the diagnostic wind field model MCWIND. The MCWIND model uses meteorological measurements and interpolates these in space, adjusting for topography and atmospheric stability. Measurements from two sites are used (Valle Hovin and Blindern); both sites are centrally located in Oslo. Data required by the dispersion modelling are atmospheric stability, wind speed and wind direction.

Hourly regional background concentrations were derived using predictions from the LOTOS-EUROS model at a number of grid squares surrounding Oslo. The hourly median concentration from these grid squares was extracted for this purpose. These values were further adjusted, based on a comparison of the predicted and observed annual mean PNC measurements at Birkenes (located about 300 km south of Oslo). This procedure resulted in a rescaling of all LOTOS-EUROS predictions by a factor of 0.75.

In Oslo, a parametrization was applied to account for deposition and coagulation processes. This was only applied in the gridded model calculations, but not in the sub-grid Gaussian modelling. This parametrization is based on calculations using the MAFOR aerosol process model for road traffic emissions (Keuken et al., 2012). First, MAFOR calculations were carried out using the complete aerosol process model description and then, for simplicity, the emissions and calculations were binned into three particle size classes. Based on these computations, deposition and coagulation rates in these three size classes were derived.

The change of the PNC in each size bin caused by coagulation was parameterized in the following simplified form:

$$\left. \frac{dPNC_i}{dt} \right|_{coag} = -PNC_i^2 \overline{K_{c,i}}, \quad (1)$$

where the subscripts i and $coag$ refer to the particle size class and coagulation, respectively, and $K_{c,i}$ is the coagulation rate derived using the MAFOR model. Dry deposition is described as

$$\left. \frac{dPNC_i}{dt} \right|_{depo} = -PNC_i \frac{\overline{v_{d,i}}}{H_{grid}}, \quad (2)$$

where $v_{d,i}$ is the dry deposition rate for the i 'th size class and H_{grid} is the depth of the lowest model grid layer.

Dispersion modelling for Rotterdam

In Rotterdam, the contribution of traffic to air quality near inner-urban roads was modelled with the urban dispersion modelling system URBIS (Eerens et al., 1993; Vardoulakis et al., 2003). This modelling system contains various submodules, such as a model for line sources, called the Pluim Snelweg model, and a model for evaluating the concentrations in street canyons, called the CAR model.

Up to a distance of 500 m, contribution from motorways was modelled with the line source dispersion module, Pluim Snelweg (Wesseling et al., 2003; Beelen et al. 2010; Keuken et al., 2012). This line source model is a Gaussian plume model. The modelling also takes into account the vehicle-induced turbulence, the roughness of the terrain, the noise screens near the motorway and the atmospheric stability. The treatments of concentration time-series is based on the concept of stratified meteorology. A time series of wind speeds and directions, observed at the airport of Rotterdam, are first clustered as a frequency distribution. The contributions downwind of the motorway, based on averaged emission rates, are then weighted using these frequencies; this procedure results in an estimate for the annual average concentration.

The street canyon dispersion model CAR is based on the results of wind tunnel experiments at different road types, including street canyons. The ratio of the height of the buildings and the width of the street is used to classify the type of street canyon. A source-receptor relationship has

been specified as a function of the distance to the street axis for five different road types. All streets in Rotterdam have been categorized in accordance to the model classification. The model simulates only annually averaged concentrations. The model therefore requires as input values the annually averaged emission rates, and the reciprocal annual average wind speed. The annual average concentration is assumed to be inversely proportional to the wind speed. The wind speed was retrieved from measurements by the National Meteorological Institute at the airport of Rotterdam.

The contribution of shipping to the PNC's was estimated based on a predicted spatial distribution of the emissions of NO_x from shipping in the Netherlands in 2007 (Snijder et al., 2012). The NO_x emission map was evaluated based on computations using as input the automatic identification signals (AIS) of ships. These computations applied for operational shipping parameters, e.g., navigational status and payload, which were based on the AIS signals. The total NO_x emissions were scaled to correspond to the year 2008, using the total amounts of emissions from shipping in the Netherlands in 2007 and 2008 (Denier van der Gon and Hulskotte, 2010). The spatial distribution of the emissions of NO_x was subsequently converted to the emissions of PN's, based on the observations by Petzold et al. (2010). The conversion was done using the average ratio of the NO_x and PN emissions in the observations of Petzold et al. (2010).

The atmospheric dispersion of shipping emissions was evaluated using the Dutch Standard Gaussian dispersion model (van Ham and Pulles, 1998). This model applies the same treatment of atmospheric dispersion as the Pluim Snelweg model. For simplicity, we assumed a constant stack height of 30 m and the heat content of exhausts of 1.0 MW, for all the ships within the region.

The urban background of PNC's were estimated based on the LOTOS-EUROS model, at a grid square that surrounds Rotterdam. The urban scale modelling has a spatial resolution of $10 \times 10 \text{ m}^2$, up to a distance of 30 m from the streets, or alternatively at the housing façade along street canyons, and up to a distance of 500 m near motorways.

Dispersion modelling for London

The OSCAR air quality assessment system (Singh et al., 2013; Sokhi et al. 2008) has been used to estimate traffic related PNC's across London. The models within the OSCAR system consist of an emission model, meteorological pre-processing model and a line source Gaussian dispersion model. The roadside dispersion model within OSCAR system is the CAR-FMI model. The hourly concentrations were predicted at the receptor points placed at varying distances of 10, 40 and 90 m near both sides of the roads, and 100 m apart in the outskirts.

A range of hourly meteorological parameters are needed, including wind speed, solar radiation, friction velocity and Monin-Obukhov length. These are provided by the dedicated OSCAR meteorological pre-processor GAMMA met, described by Bualert (2002). The meteorological model employs meteorological data, such as solar radiation, roughness length and heat flux, to estimate atmospheric stability parameters, including the Monin-Obukhov lengths and mixing heights. Data from the meteorological station at Heathrow was used as input for the model. The

effects of land use characteristics on parameters such as surface roughness, Bowen ratio, Albedo and anthropogenic heat flux are taken into account. The meteorological pre-processor needs six input parameters: time, wind speed, wind direction, ambient temperature, cloud cover and global radiation.

The regional background levels were evaluated based on the LOTOS-EUROS simulations. We used the predicted LOTOS-EUROS concentration values surrounding the city. The LOTOS-EUROS hourly values were scaled by multiplying them with the ratio of annual average measured and predicted concentrations. The measured values used for the scaling were taken from the regional background station of Harwell.

Dispersion modelling for Athens

The modelling system consists of two models: (i) the meteorological model MEMO (Moussiopoulos et al., 1993), and (ii) the chemical transport model MARS-aero (Moussiopoulos et al., 1995; Moussiopoulos et al., 2012). The MEMO model is a three-dimensional Eulerian non-hydrostatic prognostic model. The MARS-aero model can be used to simulate the transport and transformation of gaseous pollutants and atmospheric aerosols in the lower troposphere. The system allows for a finer grid simulation to be nested inside a coarser grid.

Meteorological data were generated using the MEMO model. Initialisation and boundary conditions data for the application of the MEMO model were based on upper air soundings for selected meteorological variables (wind speed and direction, temperature); these were performed at the Athens International Airport. Annual mean concentrations were estimated on the basis of computations for eight representative days, combined with a weighting scheme. These days were selected and assigned certain weights based on a classification of synoptic meteorological conditions in the Greater Athens area for 2008 (Helmis et al., 2003; Moussiopoulos et al., 2004).

The classification was done with the application of principal component analysis on a set of six meteorological variables (namely wind speed and direction, surface pressure, mixing layer height, cloud cover and specific humidity), and subsequently using a subtractive clustering algorithm. Using this procedure, the different synoptic weather conditions that prevailed during each day of the year were distributed into distinct groups, which correspond to certain characteristic meteorological features (Sfetsos et al., 2005, Shahgedanova, 1998).

The day that appeared closer to the mean of each group of synoptic meteorological conditions was considered to be a typical day representing the specific group and was simulated with MARS-aero. The weight assigned to each of the representative days was proportional to the size of the corresponding group. The application of the methodology was based on meteorological fields predicted by the WRF meteorological model (version 3.2.1, Skamarock et al., 2005), which was applied for 2008 with a horizontal grid resolution of 50 km and a temporal resolution of 3 hours. The MEMO and MARS-aero models were applied in a computational domain of 50 x 50 km², on a spatial resolution of 500 m.

Both the regional background PNC's and the concentrations of other relevant species are needed

as boundary conditions for the MARS-aero calculations. A spatially uniform annually average regional PNC background of 1800 particles cm^{-3} was used for the boundary conditions, based on Kalivitis et al. (2008). The regional background values of all other relevant species were extracted from the LOTOS-EUROS computations, at the grid squares surrounding the city.

2.4 The measurements of PN concentrations in target cities

The measurements at the station of Kumpula in Helsinki in 2008 and 2012 were performed using a Differential Mobility Particle Sizer; the particle concentrations were determined at the size range from 3 to 950 nm. Particle number concentrations at the station of Ring Road 1, Malmi were measured using a Grimm butanol condensation particle counter (CPC), with detection limit from 5 nm to larger than 3 μm .

In Oslo, the Grimm 565 Environmental Wide Range Aerosol Spectrometer system (www.GRIMMAerosol.com) was used for the measurements. This system combines a Grimm 190 aerosol spectrometer OPC (Optical Particle Counter), and a scanning mobility particle sizer with a condensation particle counter (SMPS+C). The entire system in principle covers the range from 5 nm to 30 μm . For this study only the particle sizes below 350 nm, measured using the SMPS+C instrument, have been used. For the modelling and comparison with measurements we have used a lower cutoff of 8.5 nm.

The measured values of hourly PNC concentrations for London were available from Defra's Particle Numbers and Concentrations Network, which uses CPC. This CPC measures the number of particles in the size range from 7 nm up to several μm in size.

Total PNC in Rotterdam was measured using a CPC with a lower 50 % cut-off at 3 nm and an upper limit of 3 μm . Size-resolved PNC was measured with a Scanning Mobility Particle Sizer. The SMPS consists of a differential mobility analyser (DMA) covering a size range from 10 to 480 nm and a CPC with a lower 50 % cut-off at 4 nm and an upper size limit of 1.5 μm .

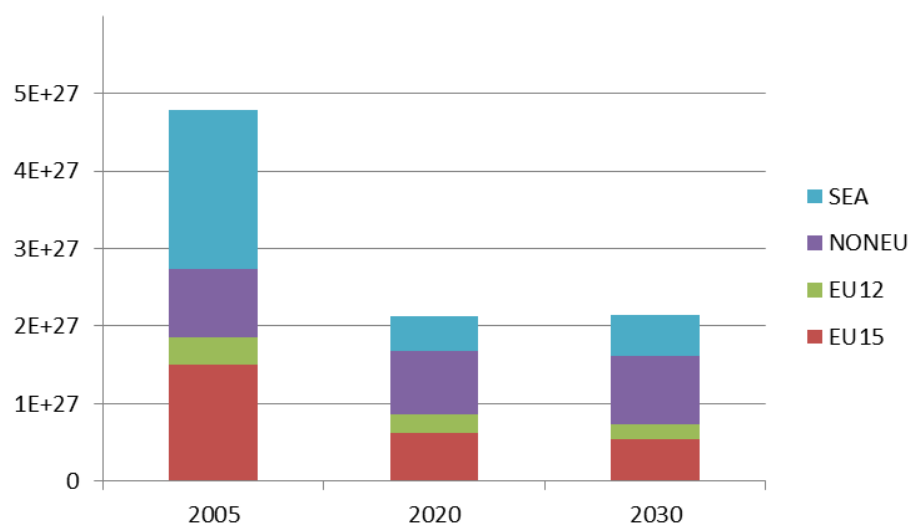
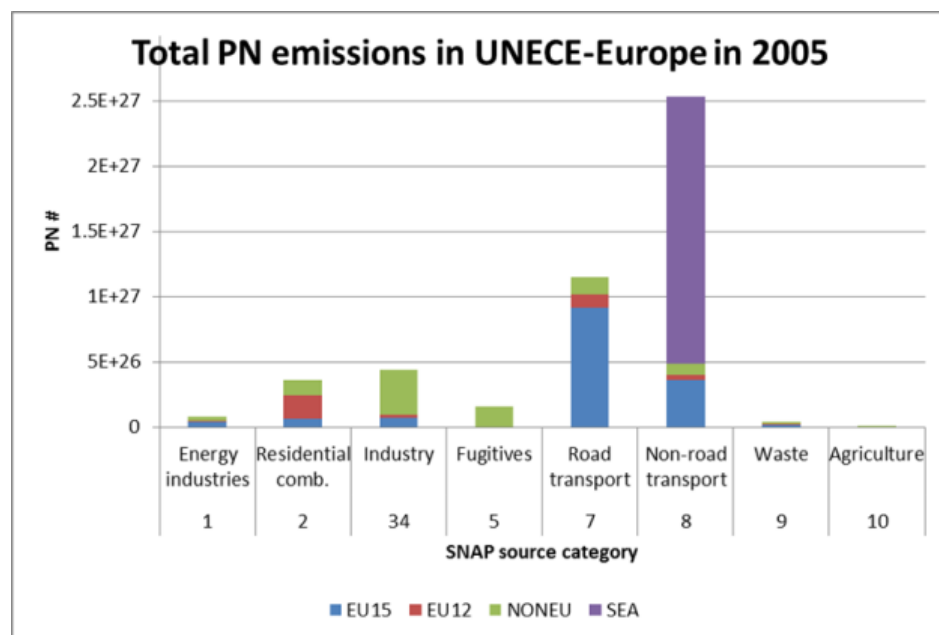
3. Results and discussion

3.1 Emissions

3.1.1 Emissions in Europe and their associated uncertainties

Total anthropogenic PN emissions in UNECE Europe were estimated using a bottom-up methodology (Denier van der Gon et al., 2014). These are presented in Figs. 2a-b, classified according to both source sector and country group. The transport sectors (i.e., road and non-road transport) contributed approximately 60 % to the total land-based PN emissions in UNECE-Europe in 2005 (Fig. 2a). The other most important sectors include industry (defined here excluding energy industries), residential combustion, fugitive emissions and energy industries.

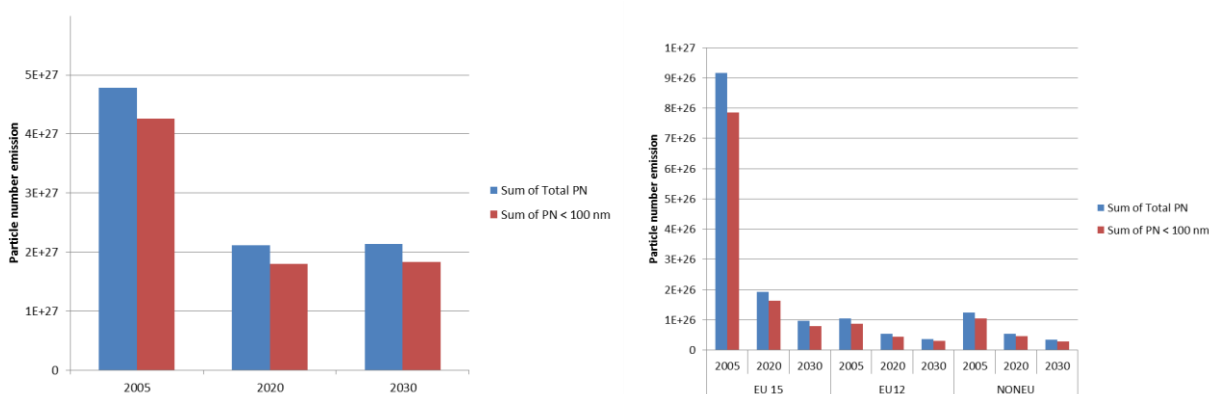
The PN emissions are projected to decrease in 2020 and 2030 to less than a half of their value in 2005 (Fig. 2b). International shipping was a dominating source in 2005, but its contribution is expected to substantially decline from 2005 to 2020 and 2030, mainly due to the introduction of low sulphur fuels. The contribution of shipping is more dominant in the current inventory, compared with the first European PN emission inventory made in the EU-funded project EUCAARI (Denier van der Gon et al., 2010a; Kulmala et al., 2011). Another remarkable change compared with the previous inventory is that in the new inventory, aviation is a substantially stronger source of UFP's than previously assumed. Most of these shipping and aviation particulate emissions are not solid, but semi-volatile particles, and may therefore have escaped attention in previous emission factor measurements.



1 Figs. 2a-b. Total anthropogenic particle number emissions in the United Nations Economic
 2 Commission for Europe, (a) classified by the source sector for 2005, and (b) classified by the
 3 country group for 2005, 2020 and 2030. 'Sea' refers to international shipping.

6 The PN emission inventory includes in principle all particulate sizes. The PN emissions in two
 7 size fractions have been presented in Figs. 3a. The ultrafine particle fraction (UFP) is defined as
 8 particles smaller in diameter than 100 nm. As expected, the difference between the total PN
 9 emissions and the UFP emissions is relatively small, as the PN emissions are dominated by the
 10 smaller size fractions.

12 The corresponding emissions solely for the road transport sector have been presented in Fig. 3b.
 13 The PN emissions of road transport are projected to significantly decrease in time (Figs. 3b). The
 14 PN emissions due to fuel combustion in road transport and shipping are expected to significantly
 15 decrease as a consequence of motor and fuel modifications, such as low-sulphur fuels and
 16 particulate matter filters (e.g. Ristovski et al. (2006); Morawska et al. 2008; Fiebig et al., 2014).
 17 The EU 15 emissions are estimated to decline strongly in future years, due to implementation of
 18 new emission standards in road transport, and the phase-out of the older vehicles that have less
 19 stringent emission limits.



22 Figs. 3a-b. (a) Total anthropogenic particle number emissions and total particle number
 23 emissions in the particle size range of 10-100 nm for UNECE-Europe for 2005, 2020 and 2030
 24 and (b) the same emissions exclusively for road transport, segmented by country group.

27 To facilitate the modelling of PN on a regional scale, the PN emissions were spatially distributed
 28 using available proxy data (Denier van der Gon et al. 2010b; Pouliot et al, 2012.) Examples of
 29 such proxy data are maps of population density, road networks, shipping tracks, land use, and
 30 port capacities. The spatial distribution of the PN emissions has been presented in
 31 Fig. 4.

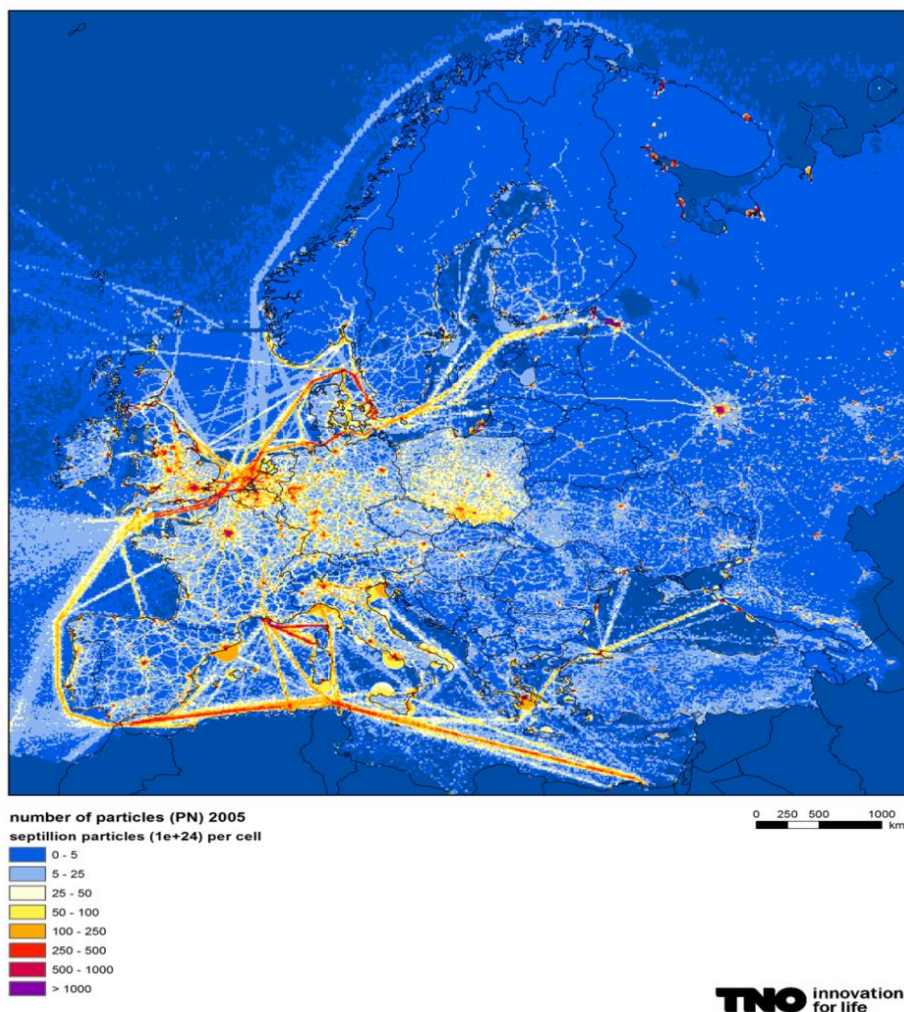


Fig. 4. Spatial distribution of anthropogenic PN emissions in Europe in 2005, on a longitude vs. latitude grid, on a resolution of $1/8^\circ \times 1/16^\circ$. The unit of the legend is 10^{24} particles per computational cell per annum.

The estimates for PN emissions are associated with a relatively high uncertainty, compared with the emissions of the commonly regulated pollutants. This uncertainty varies substantially in terms of the different source categories. Vehicle-originated PNC's can change on a short timescale after the emissions exit the tailpipe, due to both rapid dilution and microphysical processes. The latter depend on ambient temperature and other environmental conditions, as well as on secondary particle formation. Due to such transformations, the PN concentration flux is not conserved. For some source categories, no PN emission factors were available. In such cases, the PN emission was calculated based on PM measurements and estimated particle size distributions.

For the road transport emission factors reported here, an uncertainty analysis for the particle mass -based emission has been carried out. This analysis shows an uncertainty between 10 and 20 %, depending on the quality of the country's statistics (Kioutsioukis et al., 2010). Particulate

number emission factors were not included in the uncertainty evaluation of the above mentioned study. However, it is possible to indirectly estimate also the uncertainties of the PN emissions, based on the correlations between PN emission factors derived in this study with the COPERT PM emission factors (Vouitsis, 2014).

Solid particles can be measured more accurately than semi-volatile ones; the emission standards for road transport are therefore currently based on the solid fraction of PN. The PN emissions are influenced by numerous factors, such as, e.g., vehicle category, PN measuring equipment and environmental conditions. The overall uncertainty of vehicular PN emissions can therefore be evaluated to have high uncertainties: (i) 81-144 %, when after-treatment device effects are not included and (ii) 144-169 %, when these effects are included (UNECE, 2010).

Road transport is the most intensively studied source category for PN emissions. It can therefore be expected that the uncertainties for other source categories are at least of the same magnitude. For example, the total PN emission factor is dependent on the set-ups of the measurements. In particular, the measurement can (i) include only solid PN, or solid and volatile PN, and (ii) the lower particle size cut-off used in the measurements can vary, as this is dependent on the instrumental method. Sometimes a lower cut-off of 3 nm is used, but frequently also only PN's for sizes larger than 20 or 30 nm are reported. This definition of lower size cut-off can have substantial effects on the estimates of the total PN emissions. For a more detailed discussion of the various techniques used to measure PN, we refer to McMurry (2000) and Morawska et al. (2008).

Another important uncertainty is caused by the sulphur content in shipping fuels. It is known what the regulatory limit values for the fuel sulphur content are, and in some cases also what the average fuel sulphur content is; however, it is not commonly known what the actual values are. Therefore, for all transport modes the uncertainty is expected to be at least equal to the previously listed uncertainty estimate for road transport; this is in the range of 100-170%.

On a regional to city-scale, Kalafut-Pettibone et al. (2011) determined average size-resolved and total number- and volume-based emission factors for combustion. They estimated that the uncertainty of the PN emission factor is approximately plus or minus 50 %. This uncertainty value is based on longer term temporal averages.

3.1.2 Emissions in the target cities

All of the emission inventories in the target cities included vehicular traffic. However, the details of the treatments for other source categories varied substantially from city to city. The urban inventories for Helsinki, Oslo, Rotterdam and Athens included also the primary particulate matter emissions from shipping. In the case of London, the importance of shipping emissions was found to be negligible, compared with that of other urban emissions. The stationary sources were included at varying levels of detail for Helsinki, Oslo, London and Athens. In the case of Rotterdam, the airports, refineries and other major sources were included in the regional background. For Helsinki, the influence of shipping and major stationary sources was estimated indirectly, but the actual PN emission values for these source categories were not included in the

1 urban emission inventory. The influence of small-scale combustion was explicitly evaluated for
2 Oslo, and its importance was evaluated for Helsinki.

3
4 The sulphur content of vehicular motor fuel is an important factor for selecting the emission
5 factors of PN's. There has been a decreasing trend in the fuel sulphur (S) contents in Europe.
6 During the later part of 2000's, the S content of motor fuels was decreasing rapidly in many
7 European countries, commonly from < 50 ppm to < 10 ppm S. One should therefore use the
8 vehicular emission factors (EF) that were determined for the same S content as for the target year
9 of modelling (in this study 2008). For all the target cities, we used the best available locally
10 applicable EF's.

11
12 For Helsinki, calculations were based on EF's by Gidhagen et al. (2005) for Stockholm. The
13 measurements that were the basis for these EF's were made in Stockholm for heavy duty
14 vehicles (HDV) in 1999 and for light duty vehicles (LDV) in 2003. Sweden introduced its
15 Environmental Class 1 (EC1) diesel fuel in 1991, with maximum sulphur content of 10 ppm
16 (weight). The EC1 grade reached nearly complete market coverage in Sweden already in the
17 nineties, due to a strongly supportive tax policy. The EF's used for Helsinki therefore refer to
18 fuel with lower than 10 ppm sulphur content. As also Finland used the lower S content vehicular
19 fuel in 2008, the EF's used in the manuscript are appropriate in this respect. Also in Oslo and
20 Rotterdam both the modelled and actual S contents of the vehicular fuel were lower than 10 ppm
21 in 2008.

22
23 For London, the emission factors from Jones and Harrison (2006) were used, which refer to the
24 higher (< 50 ppm) fuel S, while the target year for modelling (2008) was after the transition to
25 lower S fuel. For Athens, the situation was the opposite: EF's correspond to the lower fuel S
26 content, whereas a higher S content fuel was actually used. The applied EF's are therefore
27 expected to somewhat overestimate the measured concentrations in London, and underestimate
28 those in Athens.

29
30 The most detailed emission inventory was compiled for Oslo. The proportions of total emissions
31 in Oslo in 2008 have been presented in Fig. 5. The sector denoted 'heating' includes all heating,
32 of which domestic heating is the largest part, 95%. Traffic exhaust emissions were responsible
33 for about $\frac{3}{4}$ of the total emissions; the contributions from shipping, heating and other mobile
34 sources are also notable.

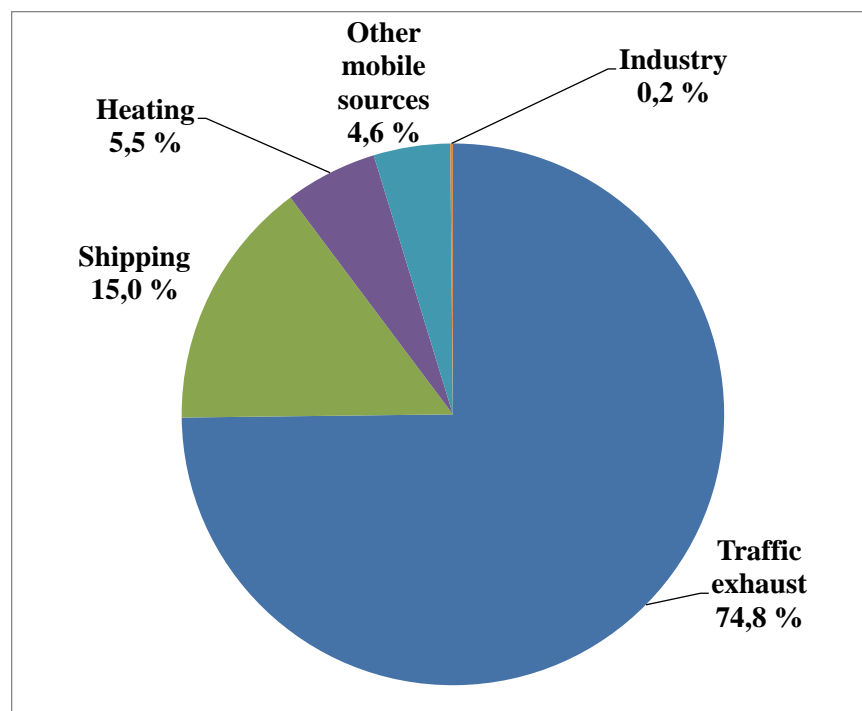


Fig. 5. The contributions of various source categories on the total emissions of particulate number in Oslo in 2008. The total amount of emissions was $1.1 \cdot 10^{24}$ particles /a.

3.2 Modelled concentrations

3.2.1 Concentrations in Europe

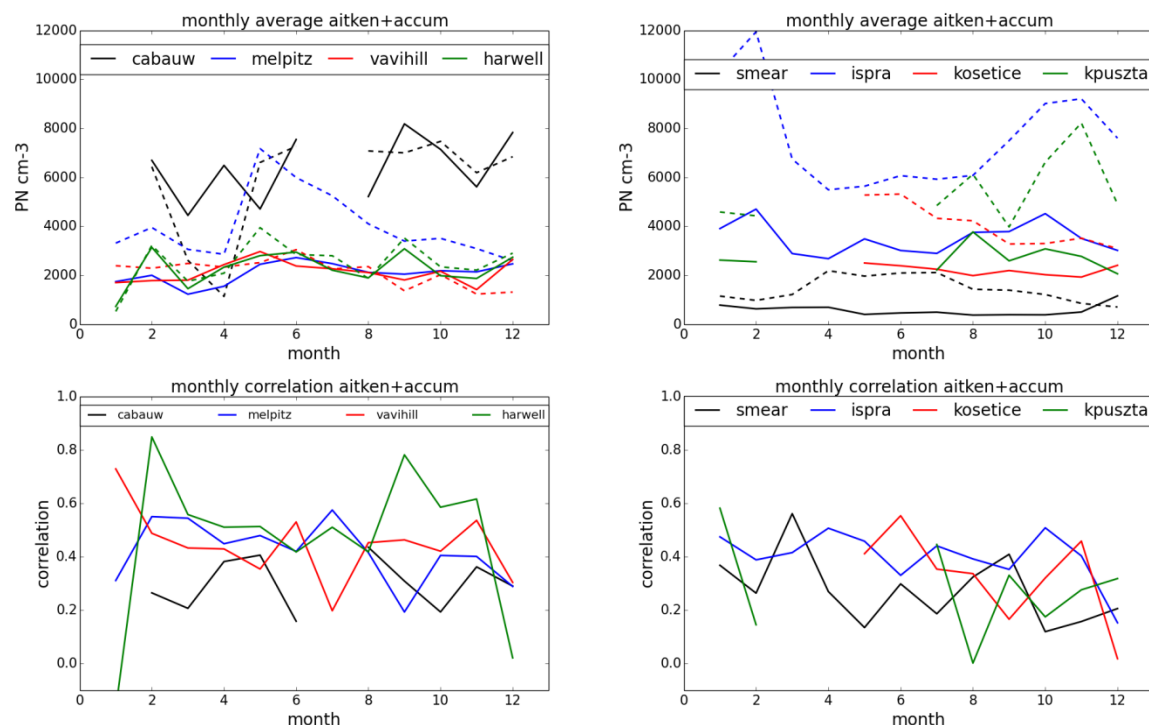
The LOTOS-EUROS model, including the M7 module, was used together with the above mentioned new PN emission inventory, to evaluate the PNC's in Europe.

Evaluation of predicted concentrations with measured values on a European scale

The predicted PNC's were compared with the EUCAARI measurements (Asmi et al 2011), with a focus on eight selected stations: Cabauw, Melpitz, Vavihill, Harwell, SMEAR, Ispra, Kosetice and Kpuszta. Cabauw is a rural site in an agricultural area in the Netherlands, with influence from the nearby city of Rotterdam; this is the type of region, for which the model is well suitable. Melpitz is a rural site in Germany, the concentrations of which are dominated by long-range transport and biogenic emissions. The site of Vavihill in Sweden is close to the sea; this site is representative for fairly clean background conditions, with occasional influence from shipping and nearby cities. The station of Harwell (UK) is a regional background site that can occasionally be influenced by the urban plume originated in London. The SMEAR II site (in Hyytiälä, southern Finland) is a high-latitude regional station, exposed alternatively to both clean and fairly polluted air masses. The site of Ispra (Italy) is in the vicinity of the Alps; it

experiences the influences of the polluted air from Po Valley. The site of Kosetice (Czech Republic) is located in the agricultural countryside. Kpuszta represents the central European regional background, relatively far from local sources.

Modelled PNC's in the Aitken and accumulation mode were compared with the observed PNC's in size bins 30-50 nm, > 50 nm and > 100 nm (the latter two bins are partly overlapping). Measured and modelled monthly average PNC's for the three sites have been presented in Figs. 6a-d. The nucleation mode was excluded. The values correspond to the size fraction 30-250 nm for the observations, and the sum of Aitken and accumulation mode for the LOTOS-EUROS computations (defined as the interval 10-1000 nm).



Figs. 6a-d. A comparison of the seasonal variation of the monthly averaged model predictions and observations of the particle number concentrations (particles/cm³, panels a-b), and the correlation coefficients of the hourly predicted and measured concentration values within each month, at eight selected measurement sites in 2008. In the upper panels (a-b), the solid lines are model predictions, and the dotted lines are measurements. The modelled values are the predictions of the LOTOS-EUROS model. The nucleation mode has been excluded; the values correspond to the size fractions 30-250 nm and 10-1000 nm for the observations and the model computations, respectively.

At Vavihill, the modelled and observed monthly average concentrations match well for the whole year. At Cabauw, since May, the overall measured and predicted levels of the PNC's were in agreement; however, the observed concentrations from January to April were not comparable with the predictions, due to different settings of the measurements. The modelled monthly

average concentrations at Melpitz were clearly lower than the corresponding measured values. These relatively high measured values have probably been caused by the substantial contribution of particles formed from biogenic emissions, which were not accounted for in the present model version. In winter, when the biogenic emissions are smaller, the model and observations match relatively better at Melpitz. The predicted monthly concentrations at Harwell agree well with the measurements; the model is well suited for this type of environment. For the site of SMEAR, the model under-predicts; contributions from biogenic emissions in summer are not taken into account in the model. For the site of Ispra, the concentrations in winter were the highest observed amongst the stations considered here, and the model substantially under-predicted. This location is, together with Cabauw, most strongly affected by anthropogenic emissions. In particular in winter, high concentrations are expected due to wood burning, in combination with stagnant conditions in the Po valley. For the site of Kosetice, the model shows a smaller underestimation in winter than in summer. For K-Pusztas statistics before September are based on a small set of measurements and are therefore only indicative.

The correlation coefficients were reasonable, ranging on the average from 0.3 to 0.6 for the stations in Fig. 6c, and from 0.3 – 0.5 for the stations in Fig. 6d. A higher correlation was not always related to an accurate estimate of total particle number.

Modelled values were on the average within a factor of two of the measured values for the Aitken mode, compared to observed particle modes in the range 30-100 nm (results not shown here). However, the number of particles with diameter > 100 nm was under-predicted, whereas the number of particles < 100 nm was in most cases over-predicted. Fountoukis et al. (2012) previously reported a similar result; a systematic under-prediction of the number of particles larger than 100 nm, using the original EUCAARI emission inventory and another chemical transport model.

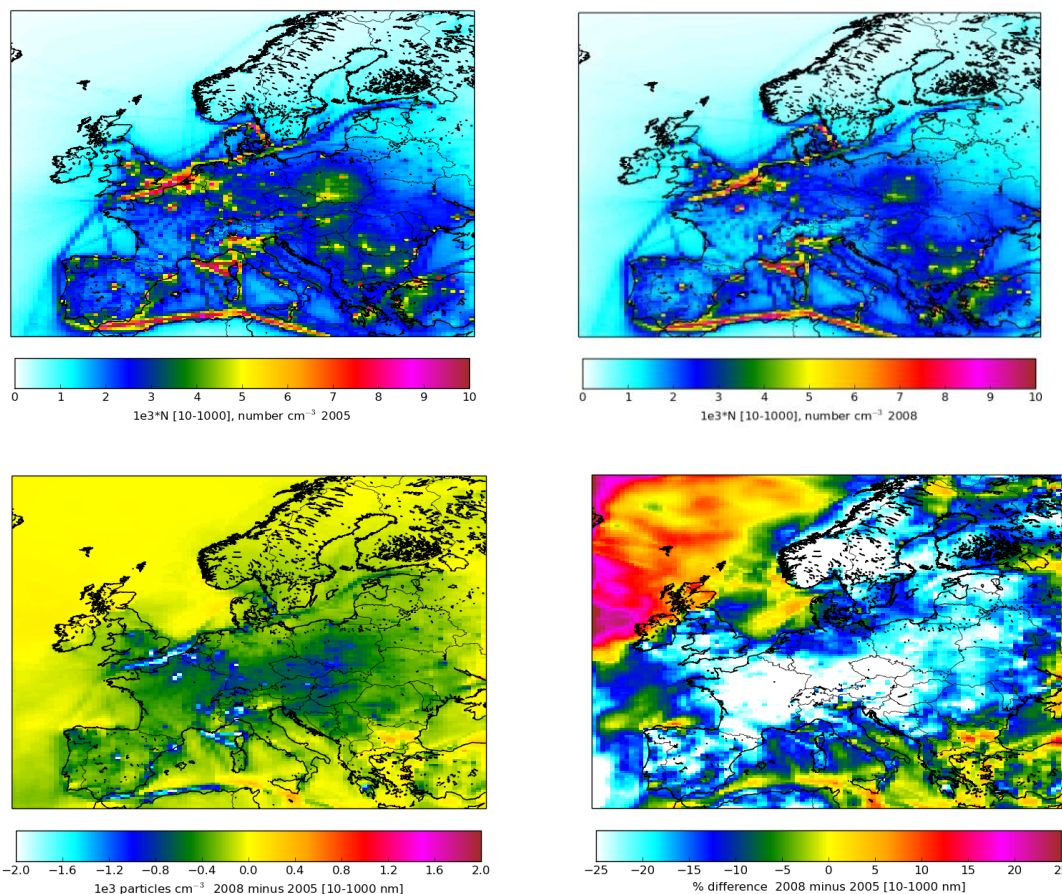
These model evaluation studies indicate that the applied regional scale modelling provides reasonably accurate results for PNC's in the size range larger than 30 nm, in the presence of dominating anthropogenic emissions. In case of substantial biogenic contribution, the predicted PNC's will probably be underestimates. Clearly, the prediction of particle size distributions is a more challenging task, compared with the prediction of the PNC's integrated over all particle sizes.

The spatial concentration distributions in Europe in 2005 and 2008

The modelled European scale PNC's for 2005 and for 2008 are presented in Figs. 7a-b. The differences of the concentrations between these two years have been presented in Figs. c-d.

The anthropogenic emissions of PN were assumed to be the same for these two years. However, for the emissions of gases, we used the MACC project emissions for the different years. The meteorological conditions and the natural emissions (which were influenced by meteorology) were also assumed to be different. During both years, the highest concentrations occurred at urban and industrialized areas, and along the most densely trafficked shipping lanes. Annual

mean concentrations reached values of up to $10\,000\text{ cm}^{-3}$ for 2005. For most regions, the PNC's were higher for 2005, compared with those for 2008.



Figs. 7a-d. Predicted annual average particle number concentrations in Europe for 2005 (panel a, upper left-hand side) and for 2008 (panel b, upper right-hand side), and the difference of the concentrations between these two years in absolute (panel c, lower left-hand side) and relative units (panel d, lower right-hand side). The modelled particulate matter size range is from 10 to 1000 nm. The unit in the legend is $10^3\text{ particles cm}^{-3}$ in panels a, b and c, and percentage differences are presented in panel d.

The largest concentration differences between the two target years were approximately 25 %. The fairly large differences of the concentrations near the western boundary of the domain are caused by the natural emissions, which were determined by the meteorological conditions. At other locations, differences are due to the combined effect of meteorology and decreased SO_2 emissions; the emissions were lower for 2008.

3.2.2 The influence of aerosol processes on an urban scale

We did not include a treatment of aerosol processes to all of the urban scale modelling systems used in this study. Instead, their influence was examined in a numerical study performed for Oslo in 2008. We have used a simplified aerosol process parametrization based on the more complex MAFOR aerosol process model and some experimental results. The numerical accuracy of the simplified model, as compared with the more complex model, was evaluated to be approximately 10 %.

The model needs as input values an initial size distribution, which was based on experimental data in Oslo, Rotterdam and Helsinki. An initial size distribution ratio was defined as the initial fraction of the total PN concentration in each size bin (PNC₁, PNC₂ and PNC₃). These model input values have been presented in Table 2.

Table 2. Data and coefficients required for the implementation of the PNC parameterization used in Oslo. Typical predicted time scales associated with deposition and coagulation are also presented.

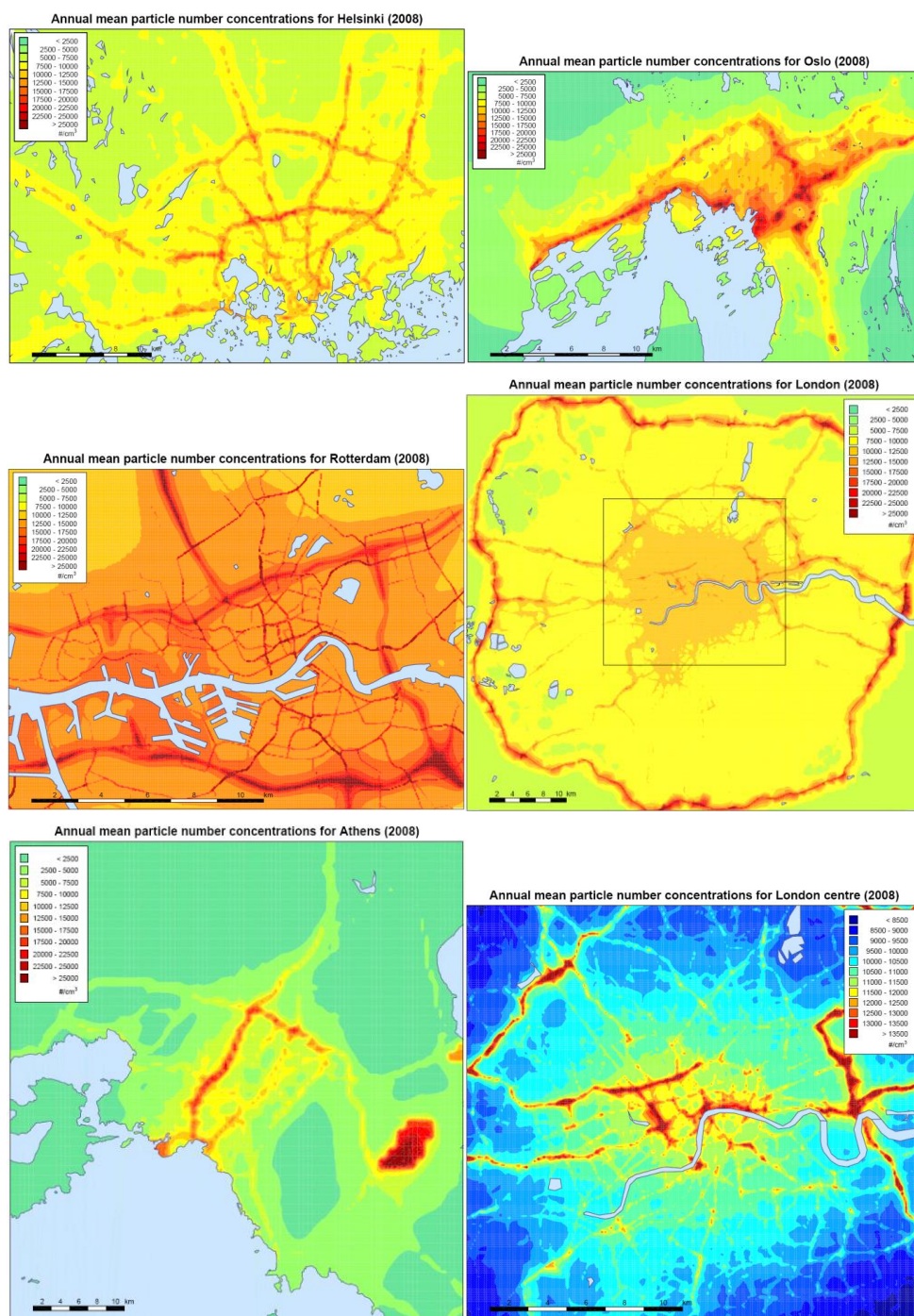
Size class	Size range (nm)	Initial size distribution ratio	Dry deposition velocity v_d ($cm\ s^{-1}$)	MAFOR derived $K_{c,i}$ ($cm^3\ \#^{-1}\ s^{-1}$)	Typical deposition time scale (h)	Typical coagulation time scale (h)
PNC ₁	8.5 - 25	0.79	0.904	6.31×10^{-9}	0.6	0.9
PNC ₂	25 - 100	0.20	0.202	5.58×10^{-9}	2.7	2.9
PNC ₃	100 - 400	0.01	0.032	8.82×10^{-10}	17	292

The impact of this parametrisation was tested in comparison with the measured data in Oslo for a three-monthly period from January to April, 2008. In these computations, the upper limit values were used both for the coagulation coefficient and the dry deposition velocity, in order to evaluate the maximum possible effects due to these processes.

Use of the parametrisation resulted in lower PNC levels further from sources. At the urban background station in Oslo (Sofienbergparken), the above mentioned parametrisation resulted in a maximum reduction of PN concentrations by approximately 45%, compared to treating PN as a tracer. The range of this percentage value, allowing for the uncertainty of the simplified aerosol process modelling, can be considered to be approximately from 40 to 50 %. The impact of deposition was larger than that caused by coagulation; however, the influences of both processes were significant. The model-derived deposition and coagulation rates in the selected three size classes, and the relevant time scales are presented in Table 2.

3.2.3 Predicted concentration distributions in the target cities

1 The predicted annually averaged spatial concentration distributions in the target cities are
2 presented in Figs. 8 a-f. The same concentration legend is used for all the cities. The
3 concentrations in various cities can therefore be inter-compared, allowing for the differences in
4 the computational methods. The central area of London has been separately presented, by using a
5 more closely spaced concentration legend.
6



Figs. 8a-f. The predicted spatial distributions of particle number concentrations in the target cities in 2008. The cities in the top row are Helsinki and Oslo, in the middle row Rotterdam and London and in the bottom row Athens and the centre of London (the location of which is shown in panel 8d as a rectangle). The concentration unit in all the legends is particles per cm^3 . The legends are identical for the panels a-e, but different for the panel f (the center of London). The water areas are presented in blue grey.

The differences of the numerical results in the various cities are mainly due to the differences in the spatial distribution and strengths of emissions, the regional background contributions, meteorological conditions and other specific characteristics of the cities. Clearly, these differences are also partly caused by the inaccuracies and deficiencies of the methods. In particular, the concentration distribution for Athens was evaluated on a spatial resolution of 500 m, which is coarser than the corresponding resolution used for the other cities; this tends to smooth out the maximum concentrations on finer spatial scales. Further, the modelling in this study did not explicitly allow for the influence of street canyons in all the target cities, except for the semi-empirical modelling of the effects of street canyons in Rotterdam. The predicted PNC's at street canyon locations, and more generally in the vicinity of locations that are influenced by high buildings tend therefore to be under-predictions in this respect.

The maximum values of annual average PNC's were approximately 20 000 in Helsinki, 30 000 in Oslo, 30 000 in Athens, and 50 000 in Rotterdam and London. These values were relatively higher in London, due mainly to very high traffic flows along the most trafficked roads, and in Rotterdam, due to both high regional background and intensive urban traffic.

The locations of harbours and airports in the target cities have been presented in Fig. A1 in Annex 1. Also tunnel entrances have been presented for Oslo. In all cities, the most important emission category that influenced the spatial distributions of PNC's was vehicular traffic; the major traffic networks are clearly visible in all the target cities. E.g., the main ring road or ring roads (for Helsinki, Oslo, London and Athens) or the main highways (for Rotterdam) surrounding the city centers are clearly visible. The concentrations were also elevated in the central areas of the cities. In Helsinki, Oslo, Rotterdam and London, the highest concentrations occurred in the vicinity of the most densely trafficked ring roads, and near the junctions of such ring roads and other major roads. In Athens, the highest predicted concentrations of PNC's occurred in the vicinity of the Athens International Airport.

The second most important urban source category was shipping and harbours. Their influences on the PNC's over land areas can be distinctly detected in the case of Oslo and Athens, and to a smaller extent also in Rotterdam. In Oslo, the higher concentrations in the vicinity of the harbours are also partly caused by the traffic tunnel entrances. It was assumed that there was no deposition of particles within the tunnels; therefore all traffic-originated PNC's within the tunnels were treated as emitted at these entrances. In Athens, there were substantially elevated PNC's near the main harbour regions (Piraeus and Rafina). For Helsinki, the shipping emissions have not been included in the PNC map shown in Fig 8a; however, it was separately evaluated that their influences can be notable near the main harbour areas (Soares et al, 2014). For London, shipping along the River Thames, and the related harbour activities cause only a negligible impact on the overall PNC's.

Although the harbours in the vicinity of Rotterdam are amongst the largest in Europe, the influence of harbour activities was only modestly detectable in Fig. 8c. The main reason for this was the fact that the most densely trafficked harbours in that region are located outside the city of Rotterdam. The harbours within the city of Rotterdam are located to the south and north of the river Nieuwe Maas, which flows through the centre of Rotterdam. These urban harbours serve

mainly inland shipping. The larger harbours serving sea going vessels are located at a distance of 5-10 km to the west of the centre of Rotterdam, near the coast of the North Sea. The harbours within the city of Rotterdam are also dispersed on a relatively wide region on both sides of the river; this tends to spatially smooth out concentration hotspots.

A potentially important source is also vehicular traffic to the airports and aviation. In Athens, there were substantially elevated PNC's near the Athens International Airport, located to the east from the centre of the city (it is clearly visible in Fig. 8e). Detailed computations showed that aviation emissions were responsible for the largest share of the concentrations within this airport and in its immediate vicinity. The influence of the Heathrow airport in London is also visible in the PNC map (near the outer ring road on the western part of the city). However, these higher concentrations were caused by the congested roads leading to the Heathrow airport; the emissions originated from aviation were not taken to account in the computations for London. The Helsinki-Vantaa airport is only slightly detectable (to the north of the outer ringroad, in the northern part of the metropolitan area). The airport in Oslo is outside the modelled domain. The influence of the Airport Rotterdam is not visible; it is a fairly small airport.

There are also some other significant source categories, such as major refineries in the vicinity of Rotterdam; however, these were not located within the modelled urban domain. Especially in Oslo, the small-scale combustion in households can also be an important source in residential regions in winter.

3.3 Evaluation of model predictions against measured data in the target cities

The model predictions were compared with the available PNC measurements in the target cities. Such measured data were available in four of the cities, as presented in Table 3.

Table 3. The comparison of measured and predicted PNC's in four target cities. IA is the index of agreement and FB is the fractional bias. NA refers to data or evaluation measures that were not available.

City	Name of station	Classification of station	Period	Mean of the observed values (10^3 particles/ cm^3)	Mean of the predicted values (10^3 particles/ cm^3)	IA (based on the hourly means)	FB
Helsinki	SMEAR III, Kumpula	Urban background	Whole year 2012	7.1	NA	NA	NA
	Ring Road I	Urban traffic	Whole year 2012	19.5	20.0	0.75	+ 0.02
Oslo	Sofienbergparken	Urban background	Three months, Jan-Mar 2008	9.3	10.8	0.77	+ 0.15
	Smestad	Urban Traffic	Three months, Jan-Mar 2008	24.0	19.8	0.79	- 0.19
Rotterdam	Zwartewaalstraat	Urban background	Whole year 2011	14.5	10.1	NA	- 0.22
	Rotterdam, Bentinckplein	Urban traffic	Whole year 2011	17.7	20.1	NA	+ 0.20
London	North Kensington	Urban background	Whole year 2008	14.0	10.8	NA	- 0.26
	Marylebone Road	Urban traffic	Whole year 2008	36.7	15.7	NA	- 0.81

The predictions and measurements were compared at two stations, representing urban background and urban traffic environments, in three cities, viz. Oslo, Rotterdam and London. In the case of Helsinki, such comparisons were performed only at one station (Ring Road 1, Malmi, urban traffic) for 2012. The comparisons were performed for different years in Rotterdam (2011) and in Helsinki (2012), as the relevant measured data was not available for those cities in 2008.

The comparison in the case of annual averages is also presented graphically, in Fig. 9. The predicted concentrations consist of the regional background and the local urban contributions. The regional background values presented in the figure are the predictions of the LOTOS-

EUROS model in the surroundings of the cities, either the original predictions (for Helsinki and Rotterdam) or scaled using relevant regional background measurements (for Oslo and London).

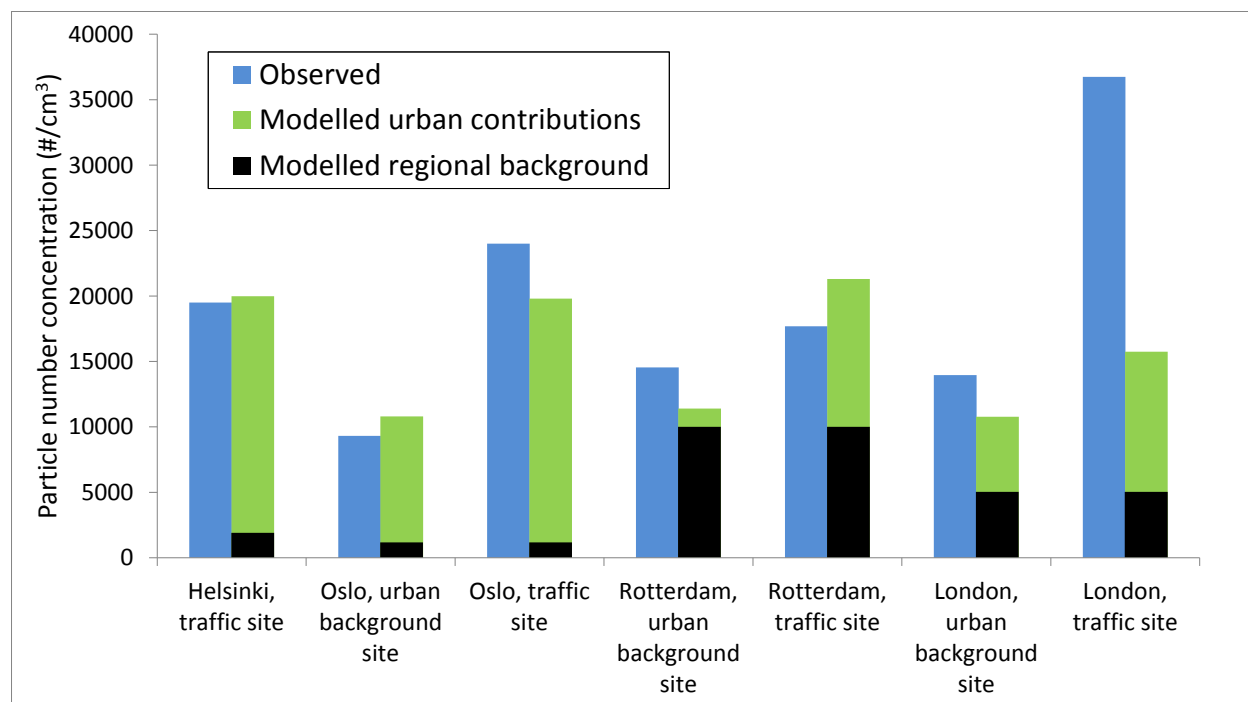


Fig. 9. Comparison of the predicted and measured annual average particle number concentrations in four cities. The total predicted concentration is the sum of regional background and urban contributions. The names of the stations have been specified in Table 3.

The regional background concentrations were clearly lower than the contributions originated from urban sources in Helsinki and Oslo, and lower (for traffic site) or almost equal (urban background) in London. However, for Rotterdam the regional background was the largest contributor (for urban background) or responsible for almost half of the total concentration (urban traffic site). This result was to be expected, as Rotterdam is surrounded by a high population density and several intensive emission sources (such as other major cities, refineries and major harbours). The uncertainties caused by the regional scale modelling have therefore a relatively smaller effect in Helsinki, Oslo and London (but vice versa for Rotterdam), compared with the uncertainties associated with the urban scale modelling.

The corresponding results for Athens are not presented in Fig. 9, as the experimental data was not available for 2008. The representative annual average of the urban background of PNC in Athens, predicted at the station of Nea Smyrni, was $6.8 \cdot 10^3 \text{ cm}^{-3}$. A characteristic annual average PNC predicted at an urban traffic station, Athinas, was $12.2 \cdot 10^3 \text{ cm}^{-3}$. The measured regional background of PNC was $1.8 \cdot 10^3 \text{ cm}^{-3}$. However, the predicted values at specific point locations

in Athens are not directly comparable with those in the other cities, due to the more coarse resolution of the computations. The air quality stations in traffic environments in the Greater Athens Area are also not located in the immediate vicinity of the major highways.

The predicted and measured annual averages agreed within approximately $\leq 26\%$ (measured as fractional biases), except for the traffic station in London. As expected, the agreement of annual average concentration values was better at urban background stations compared with urban traffic stations in Oslo and London; however, these agreements were not substantially different in Rotterdam. The urban traffic station in London is Marylebone Road, which is located in a street canyon and has continuously severe traffic congestion. The measured concentration at the Marylebone Road station is substantially higher than the predicted value. The lower predicted concentration values are probably mainly caused by the fact that the computations in this study did not allow for the effects due to street canyons for London.

It was possible to evaluate the agreement of the measured and predicted hourly time series of PNC's at three stations located in two cities, Oslo and Helsinki (cf. Table 3). The period of these comparisons was one year in the case of Helsinki, and three months in the case of Oslo. The indexes of agreement (IA) for these comparisons were 0.75 for the annual time period in Helsinki, and 0.77 and 0.79 for the three-monthly periods in Oslo; these values indicate a fairly good agreement of measurements and predictions. However, the computational methods also influence the values of the IA's. In the case of Oslo, the regional background values and local urban contributions were separately modelled, whereas for Helsinki, the predicted values contain measured urban background PNC values and the predicted local contributions. The measured annual average of the urban background of the PNC (at the site of Kumpula) was $7.1 \cdot 10^3 \text{ cm}^{-3}$ and the modelled contribution originated from urban vehicular sources was $12.9 \cdot 10^3 \text{ cm}^{-3}$.

In general, we evaluate that for Helsinki, Oslo and London, the largest contributors to the differences of predictions and measurements are (i) the uncertainties of the urban scale emission inventories, and (ii) the uncertainties associated with the urban dispersion modelling systems. For cities located in highly urbanized regions, such as Rotterdam, the uncertainties of evaluating regional background can be even more important. Clearly, sources or source categories that are missing from the computations can also have a significant effect. For instance, we performed computations for Rotterdam, neglecting the contributions from shipping and harbours. The FB's were -0.36 (including shipping that was -0.22) and +0.13 (including shipping +0.20).

3 Conclusions

We have presented the results of the modelling of PNC's in five European cities in 2008. Novel emission inventories of particle numbers have been compiled both on urban and European scales (the latter is called the TRANSPHORM inventory). It has not previously been possible to conduct such computations on a European scale, due to the deficiencies of the previously available emission inventories. The TRANSPHORM PN emission inventory was based on a previous inventory that was compiled in the EUCAARI project (Kulmala et al., 2011). The new inventory focused on improving the representation of the emissions of the transport sector; major improvements were made to the previous inventory in this respect. The previous emission inventory was also substantially re-structured and improved for particulate matter emissions.

1
2 However, there are still unresolved issues on PN emissions. The semi-volatile particulate matter
3 should also be allowed for, in addition to solid state particles. Another challenge is to allow for
4 the short-term temporal transformations of particulate matter, after the exhaust of pollutants from
5 an engine or an industrial process. PNC is not a conserved quantity, and the emission values are
6 therefore dependent on the detailed definition of emissions; especially on the assumed spatial
7 distance from the emission source. Clearly, the transformation is dependent on ambient
8 conditions, especially on the ambient air temperature. The values of measured PN emissions are
9 also dependent on the selected lower particulate matter limit; this is commonly determined by the
10 capabilities of the experimental techniques. The impacts of fuel quality and the sulphur content
11 of fuels on PN emissions are also not currently sufficiently understood.

12
13 We have also compiled detailed and extensive urban scale emission inventories in the five target
14 cities. However, the present knowledge is not sufficiently accurate regarding the variation of PN
15 emission factors in terms of the various source categories, especially for shipping and small-scale
16 combustion, and for various environmental conditions. In future work, an in-depth inter-
17 comparison of such urban emission inventories would be valuable, in terms of both the physical
18 assumptions and the numerical emission values.

19
20 We have conducted dispersion modelling on both European and urban scales. The European
21 scale computations included aerosol process modelling; however, it was not possible to include a
22 detailed treatment of aerosol processes to all of the urban scale modelling systems. Instead, the
23 influence of coagulation and deposition was examined numerically for the background air
24 pollution in Oslo in 2008. These processes were estimated to reduce the background air PNC's
25 maximally by approximately 40 – 50 % in the considered environmental conditions. The urban
26 scale modelling also did not explicitly allow for the influence of urban buildings and other
27 structures.

28
29 In all of the target cities, the highest concentrations occurred in the vicinity of the most densely
30 trafficked roads, and near the junctions of such roads and other major roads. The concentrations
31 were also elevated in the city centers. The influence of shipping and harbours was also
32 significant for all the target cities, except for London. Three of the target cities are located on the
33 seaside (Helsinki, Oslo and Athens), and two are situated along major rivers (Rotterdam and
34 London). The regional background concentrations were an important factor for London, and the
35 largest factor for Rotterdam. In Oslo, the PNC's were also enhanced near the road tunnel
36 entrances.

37
38 The predicted and measured annual average PNC's in four cities agreed within approximately \leq
39 26 %, except for one traffic station in London. We consider this agreement to be reasonable,
40 considering the many potential uncertainties associated with the PNC modelling. The indexes of
41 agreement (IA) for the comparisons of hourly measured and predicted time-series in Oslo and
42 Helsinki ranged from 0.75 to 0.79, indicating a fairly good agreement. However, the amount of
43 experimental data that could be used for model evaluation was modest: only one or two stations
44 for each city, and no relevant data were available for Athens. More long-term hourly
45 measurements of PNC's would therefore be valuable for a more thorough model evaluation in
46 various urban locations.

4 Code availability

The computer code of the LOTOS-EUROS model can be made available upon request (contact: Astrid Manders on email astrid.manders@tno.nl). The code is written in FORTRAN 90 and uses NetCDF libraries and python scripts.

The access to the CAR-FMI model for educational and non-commercial research use can be granted after signing a collaborative agreement with the Finnish Meteorological Institute (contact: Jaakko Kukkonen on email jaakko.kukkonen@fmi.fi). The code is written in FORTRAN 77.

The computer code of the EPISODE model can be made available upon request (contact: Leonor Tarrason on email leonor.tarrason@nilu.no). The code is written in FORTRAN 90.

The OSCAR model can be configured for any urban area in collaboration with the Centre for Atmospheric and Instrumentation Research (CAIR) at the University of Hertfordshire, UK. Access to the model for educational and non-commercial research use can be granted after signing a collaborative agreement with the University of Hertfordshire. The code has been developed to assess air quality and exposure to air pollution at local scales across cities (contact: Ranjeet S Sokhi on email r.s.sokhi@herts.ac.uk). The model code is written in FORTRAN 90, except for emission model, which is written in Matlab.

The MEMO and MARS-aero models can be obtained for educational and non-commercial research use, after signing an end-user license agreement from the Aristotle University of Thessaloniki (contact: George Tsegas on email gtseg@aix.meng.auth.gr). The code is written in FORTRAN 95 and uses OpenMP and MPI directives.

5 Acknowledgements

This work was mainly funded by EU Seventh Framework Programme - (ENV.2009.1.2.2.1) project TRANSPHORM. We also wish to thank for funding of the Academy of Finland for “The Influence of Air Pollution, Pollen and Ambient Temperature on Asthma and Allergies in Changing Climate (APTA)”, Nordforsk for the project “Understanding the link between Air pollution and Distribution of related Health Impacts and Welfare in the Nordic countries (NordicWelfAir)” and Academy of Finland via The Centre of Excellence in Atmospheric Science - From Molecular and Biological processes to The Global Climate (272041). We thank Dr. Anu Kousa, Helsinki Region Environmental Services Authority (HSY), for the particle number concentration data from the traffic site in Helsinki. Ms. Mari Kauhaniemi and Mr. Juha Nikmo are thanked for the processing of the data and results.

6 References

- Asmi, A., Wiedensohler, A., Laj, P., Fjaeraa, A. -, Sellegri, K., Birmili, W., Weingartner, E., Baltensperger, U., Zdimal, V., Zikova, N., Putaud, J. -, Marinoni, A., Tunved, P., Hansson, H. -, Fiebig, M., Kivekas, N., Lihavainen, H., Asmi, E., Ulevicius, V., Aalto, P. P., Swietlicki, E., Kristensson, A., Mihalopoulos, N., Kalivitis, N., Kalapov, I., Kiss, G., de Leeuw, G., Henzing, B., Harrison, R. M., Beddows, D., O'Dowd, C., Jennings, S. G., Flentje, H., Weinhold, K., Meinhardt, F., Ries, L. & Kulmala, M. 2011. Number size distributions and seasonality of submicron particles in Europe 2008-2009. *Atmos. Chem. Phys.* 11, p. 5505-5538.
- Atkinson, R.W., Fuller, G.W., Anderson, H.R., Harrison, R.M., Armstrong, B., 2010. Urban ambient particle metrics and health: a time series analysis. *Epidemiology* 21, 501–511.
- Beelen, R., Voogt, M., Duyzer, J., Zandveld, P., Hoek, G., 2010. Comparison of the performances of land-use regression modelling and dispersion modelling in estimating small-scale variations in long-term air pollution concentrations in a Dutch urban area. *Atmos. Environ.* 44, 4614-4621.
- Bualert, Surat. 2002. "Development and Application of an Advanced Gaussian Urban Air Quality Model". University of Hertfordshire, UK.
- Buzea, Cr., Pacheco Blandino, I.I., Robbie, K., 2007. Nanomaterials and nanoparticles: Sources and toxicity. *Biointerphases* 2 (4), 17-172.
- Daher, N., Hasheminassab, S., Shafer, M.M., Schauer, J.J., Sioutas, C., 2013. Seasonal and spatial variability in chemical composition and mass closure of ambient ultrafine particles in the megacity of Los Angeles. *Environmental Science: Processes & Impacts*, 15, 283.
- Delfino R.J., Sioutas C., Malik S., 2005. Potential role of ultrafine particles in associations between airborne particle mass and cardiovascular health. *Environ Health Perspect.* 113, 934-946.
- Denier van der Gon, HAC, A. Visschedijk, H. van der Brugh, R. Dröge, A high resolution European emission data base for the year 2005, A contribution to UBA- Projekt PAREST: Particle Reduction Strategies, TNO report TNO-034-UT-2010-01895_RPT-ML, Utrecht, 2010b.
- Denier van der Gon, HAC; Visschedijk, AJH; Johansson, C.; Ntziachristos, L.; Harrison, R. M.: Size-resolved Pan-European Anthropogenic Particle Number Inventory, Conference proceedings of International Aerosol Conference 2010, 29.08 2010 -03.09.2010, Helsinki, Finland, 2010a.
- Denier van der Gon H.A.C., A.J.H. Visschedijk, J. Kuenen, C. Schieberle, I. Vouitsis, Z. Samaras, J. Moldanova, A. Petzold,: European particle number emissions for 2005, 2020 and 2030 with special emphasis on the transport sector, 9th International Conference on Air Quality – Science and Application, Garmisch-Partenkirchen, Germany, 24-28 March 2014
- Eerens, H.C., Sliggers, C.J., van den Hout, K. D., 1993. The CAR model: the Dutch method to determine city street air quality. *Atmospheric Environment* Vol. 27B, 4, 389-399.

- 1 Fiebig M., A. Wiartalla, B. Holderbaum, S. Kiesow, Particulate emissions from diesel engines:
2 correlation between engine technology and emissions, *Journal of Occupational Medicine and*
3 *Toxicology* 2014, 9:6
4
- 5 Fountoukis, C., Riipinen, I., Denier van der Gon, H.A.C., Charalampidis, P.E., Pilinus, C.,
6 Wiedensohler, A, O'Dowd, C., Putaud, J.P., Moerman, M., and Pandis, S.N. (2012). Simulating
7 ultrafine particle formation in Europe using a regional CTM: contribution of primary emissions
8 versus secondary formation to aerosol number concentrations. *Atmos. Chem. Phys.* 12, 8663-
9 8677
10
- 11 Franck, U., Odeh, S., Wiedensohler, A., Wehner, B., Herbarth, O., 2011. The effect of particle
12 size on cardiovascular disorders — the smaller the worse. *Science of the Total Environment* 409
13 (20), 4217–4221.
14
- 15 González Y., Rodríguez S., 2013, A comparative study on the ultrafine particle episodes induced
16 by vehicle exhaust: A crude oil refinery and ship emissions. *Atmospheric Research*, 120-121, 43-
17 54.
18
- 19 Gidhagen, L., Johansson, C., Langner, J., Foltescu, V.L. (2005) Urban scale modeling of particle
20 number concentration in Stockholm *Atmospheric Environment* 39, 1711-1725.
21
- 22 Glasius, M., Ketzel, M., Wåhlin, P., Bossi, R., Stubkjær, J., Hertel, O., Palmgren, F., 2008.
23 Characterization of particles from residential wood combustion and modelling of spatial
24 variation in a low-strength emission area. *Atm. Environ.* 42, 8686-8697.
25
- 26 GLA, 2010. “The London Atmospheric Emissions Inventory 2008”
27 <http://data.london.gov.uk/laei-2008>
28
- 29 Gkatzoflias, Dimitrios, Chariton Kouridis, Leonidas Ntziachristos, and Zissis Samaras. 2012.
30 “COPERT 4, Computer Programme to Calculate Emissions from Road Transport. User Manual”.
31 European Environment Agency. v9.0.
32
- 33 Guenther, A., Hewitt, C.N., Erickson, D., Fall, R., Geron, C., Graedel, T., Harley, P., Klinger, L.,
34 Lerdau, M., McKay, W.A., Pierce, T., Scholes, B., Steinbrecher, R., Tallamraju, R., Taylor, J.
35 and Zimmermann, P. (1995) A global model of natural volatile organic compound emissions, *J.*
36 *Geophys. Res.* 100, 8873-8892.
37
- 38 Hussein T, A. Karppinen, J. Kukkonen, J. Härkönen, P.P. Aalto, K. Hämeri, V-M Kerminen, M
39 Kulmala, 2006. Meteorological dependence of size-fractionated number concentrations of urban
40 aerosol particles. *Atmos. Environ.* 40 (2006) 1427–1440.
41
- 42 Hussein, T., J. Kukkonen, H. Korhonen, M. Pohjola, L. Pirjola, D. Wraith, J. Härkönen, K.
43 Teinilä, I.K. Koponen, A. Karppinen, R. Hillamo and M. Kulmala, 2007. Evaluation and
44 modeling of the size fractionated aerosol particle number concentration measurements nearby a
45 major road in Helsinki – Part II: Aerosol measurements within the SAPHIRE project. *Atmos.*

Chem. Phys. 7, 4081–4094 (<http://www.atmos-chem-phys.net/7/4081/2007/acp-7-4081-2007.pdf>).

Hedberg, E., A. Kristensson, M. Ohlsson, C. Johansson, P.Å. Johansson, E. Swietlicki, V. Veselya, U. Wideqvista, R. Westerholm (2002). Chemical and physical characterization of emissions from birch wood combustion in a wood stove. *Atmos. Environ.* 36 (30), 4823–4837.

Helmis C.G., Moussiopoulos, N., Flocas, H.A., Sahm, P., Assimakopoulos, V.D., Naneris, C., Maheras, P., 2003. Estimation of transboundary air pollution on the basis of synoptic scale weather types. *Int J Climatol* 23, 405–416.

Hoek, G., Boogaard, H., Knol, A., Hartog de, J., Slottie, P., Ayres, J.G., Borm, P., Brunekreef, B., Donaldson, K., Forastiere, F., Holgate, S., Kreyling, W.G., Nemery, B., Pekkanen, J., Stone, V., Wichmann, E., Sluis van der, J., 2010. Concentration response functions for ultrafine particles and all-cause mortality and hospital admissions: Results of an European expert panel elicitation. *Environmental Science and Technology*, 44, 476–482.

Hussein, T., J. Kukkonen, H. Korhonen, M. Pohjola, L. Pirjola, D. Wraith, J. Härkönen, K. Teinilä, I.K. Koponen, A. Karppinen, R. Hillamo and M. Kulmala, 2007. Evaluation and modeling of the size fractionated aerosol particle number concentration measurements nearby a major road in Helsinki – Part II: Aerosol measurements within the SAPPHIRE project. *Atmos. Chem. Phys.* 7, 4081–4094 (<http://www.atmos-chem-phys.net/7/4081/2007/acp-7-4081-2007.pdf>).

Hsu, H-H, Adamkiewicz, G., Houseman, A.E., Spengler, J.D., Levy, J.I., 2014. Using mobile monitoring to characterize roadway and aircraft contributions to ultrafine particle concentrations near a mid-sized airport. *Atmospheric Environment* 89, 688–695

Härkönen, J., Valkonen, E., Kukkonen, J., Rantakrans, E., Lahtinen, K., Karppinen, A. and Jalkanen, L., 1996. A model for the dispersion of pollution from a road network. Finnish Meteorological Institute, Publications on Air Quality 23. Helsinki, 34 p.

INRO, 1994. EMME/2 User's Manual. INRO Consultants Inc., Montreal, Canada.

Jalkanen, J.-P., L. Johansson, J. Kukkonen, A. Brink, J. Kalli, and T. Stipa, 2012. Extension of an assessment model of ship traffic exhaust emissions for particulate matter and carbon monoxide, *Atmos. Chem. Phys.*, 12, 2641–2659. <http://www.atmos-chem-phys.net/12/2641/2012/acp-12-2641-2012.pdf>

Johansson, L., J.-P. Jalkanen, J. Kalli and J. Kukkonen, 2013. The evolution of shipping emissions and the costs of regulation changes in the northern EU area. *Atmos. Chem. Phys.*, 13, 11375–11389, 2013. <http://www.atmos-chem-phys.net/13/11375/2013/acp-13-11375-2013.pdf>

Jones, A. M. and Harrison, R. M. (2006). Estimation of the emission factors of particle number and mass fractions from traffic at a site where mean vehicle speeds vary over short distances. *Atmospheric Environment*, 40(37), 7125–7137.

Jonson, J. E., Jalkanen, J. P., Johansson, L., Gauss, M., and Denier van der Gon, H. A. C.: Model calculations of the effects of present and future emissions of air pollutants from shipping in the Baltic Sea and the North Sea, *Atmos. Chem. Phys. Discuss.*, 14, 21943-21974, doi:10.5194/acpd-14-21943-2014, 2014

Järvi, L., Hannuniemi, H., Hussein, T., Junninen, H., Aalto, P.P., Hillamo, R., Mäkelä, T., Keronen, P., Siivola, E., Vesala, T. and Kulmala, M. (2009). The urban measurement station SMEAR III: Continuous monitoring of air pollution and surface-atmosphere interactions in Helsinki, Finland. *Boreal Environ. Res.* 14, 86-109.

Kalivitis, N., Birmili, W., Stock, M., Wehner, B., Massling, A., Wiedensohler, A., Gerasopoulos, E., and Mihalopoulos, N., 2008 Particle size distributions in the Eastern Mediterranean troposphere, *Atmos. Chem. Phys.*, 8, 6729-6738, doi:10.5194/acp-8-6729-2008.

Karl, J., A., R., M., Gross, A., Pirjola, L., Leck, C., 2011. A new flexible multicomponent model for the study of aerosol dynamics in the marine boundary layer. *Tellus B* 63(5), 1001-1025, doi: 10.1111/j.1600-0889.2011.00562.x.

Kalafut-Pettibone, A. J., Wang, J., Eichinger, W. E., Clarke, A., Vay, S. A., Blake, D. R., and Stanier, C. O.: Size-resolved aerosol emission factors and new particle formation/growth activity occurring in Mexico City during the MILAGRO 2006 Campaign, *Atmos. Chem. Phys.*, 11, 8861-8881, doi:10.5194/acp-11-8861-2011, 2011.

Kauhaniemi, M., Karppinen, A., Härkönen, J., Kousa, A., Alaviippola, B., Koskentalo, T., Aarnio, P., Elolähde, T. and Kukkonen, J., 2008. Evaluation of a modelling system for predicting the concentrations of PM_{2.5} in an urban area. *Atmospheric Environment* 42, 4517-4529.

Keuken, M.P., J.S. Henzing, P. Zandveld, S. van den Elshout, M. Karl, 2012. Dispersion of particle numbers and elemental carbon from road traffic, a harbor and an airstrip in the Netherlands. *Atmospheric Environment* 54 (2012) 320-327.

Ketzel, M., Wählin, P., Kristensson, A., Swietlicki, E., Berkowicz, R., Nielsen, O.J., Palmgren, F., 2003b. Particle size distribution and particle mass measurements at urban, near-city and rural levels in the Copenhagen area and Southern Sweden. *Atmospheric Chemistry and Physics Discussions* 3, 5513-5546.

Ketzel, M., Berkowicz, R., 2004. Modelling the fate of ultrafine particles from exhaust pipe to rural background: an analysis of time scales for dilution, coagulation and deposition. *Atmospheric Environment* 38, 2639-2652

Keuken, M.P., Moerman, M., Zandveld, P., Henzing, J.S., Hoek, G., 2015a. Total and size-resolved particle number and black carbon concentrations in urban areas near Schiphol airport (the Netherlands). *Atmospheric Environment* 104, 132-142.

- 1 Keuken, M.P., Moerman, M., Zandveld, P., Henzing, J.S., 2015b. Total and size-resolved
2 particle number and black carbon concentrations near an industrial area. *Atmospheric*
3 *Environment* 122, 196-205.
- 4
- 5 Kittelson, D.B., Watts, W.F., Johnson, J.P., 2004. Nanoparticle emissions on Minnesota
6 highways. *Atmospheric Environment* 38, 9–19
- 7
- 8 Kittelson D. B., Watts W. F., Johnson J. P., 2006. On-road and laboratory evaluation of
9 combustion aerosols - Part 1: Summary of diesel engine results. *Aerosol Science* 37, 913-930.
- 10
- 11 Kioutsioukis, I., Kouridis, Ch., Gkatzoflias, D., Dilara, P., Ntziachristos, L., 2010. Uncertainty
12 and Sensitivity Analysis of National Road Transport Inventories Compiled with COPERT 4.
13 *Procedia Social and Behavioral Sciences* 2, 7690–7691.
- 14
- 15 Klose, W. Birmili, J. Voigtländer, T. Tuch, B. Wehner, A. Wiedensohler and M. Ketzel (2009)
16 Particle number emissions of motor traffic derived from street canyon measurements in a Central
17 European city. *Atmos. Chem. Phys. Discuss.*, 9, 3763–3809, 2009. [http://www.atmos-chem-](http://www.atmos-chem-phys-discuss.net/9/3763/2009/acpd-9-3763-2009.pdf)
18 [phys-discuss.net/9/3763/2009/acpd-9-3763-2009.pdf](http://www.atmos-chem-phys-discuss.net/9/3763/2009/acpd-9-3763-2009.pdf)
- 19
- 20 Kristensson, A., Swietlicki, E., Berkowicz, Nielsen, O. 2003b. Particle size distribution and
21 particle mass measurements at urban, near-city and rural levels in the Copenhagen area and
22 Southern Sweden. *Atmospheric Chemistry and Physics Discussions* 3, 5513-5546.
- 23
- 24 Kukkonen, Jaakko, Jari Härkönen, Jari Walden, Ari Karppinen, and Kaisa Lusa. 2001.
25 “Evaluation of the CAR-FMI Model Against Measurements Near a Major Road.” *Atmospheric*
26 *Environment* 35 (5): 949–960. doi:10.1016/S1352-2310(00)00337-X.
- 27
- 28 Kukkonen, J., Olsson, T., Schultz, D. M., Baklanov, A., Klein, T., Miranda, A. I., Monteiro, A.,
29 Hirtl, M., Tarvainen, V., Boy, M., Peuch, V.-H., Poupkou, A., Kioutsioukis, I., Finardi, S.,
30 Sofiev, M., Sokhi, R., Lehtinen, K. E. J., Karatzas, K., San José, R., Astitha, M., Kallos, G.,
31 Schaap, M., Reimer, E., Jakobs, H., and Eben, K., 2012: A review of operational, regional-scale,
32 chemical weather forecasting models in Europe, *Atmos. Chem. Phys.*, 12, 1-87, doi:10.5194/acp-
33 12-1-2012.
- 34
- 35 Kulmala, M., Lehtinen, K.E.J., Laaksonen, A. (2006). Cluster activation theory as an explanation
36 of the linear dependence between formation rate of 3nm particles and sulphuric acid
37 concentration. *Atmos. Chem. Phys.* 6, 787-793.
- 38
- 39 Kulmala, M., Riipinen, I., Sipilä, M., Manninen, H.E., Petäjä, T., Junninen, H., Dal Maso, M.,
40 Mordas, G., Mirme, A., Vana, M., Hirsikko, A., Laakso, L., Harrison, R.M., Hanson, I., Leung,
41 C., Lehtinen, K.E.J., & Kerminen, V.-M. (2007). Toward direct measurement of atmospheric
42 nucleation. *Science*, 318, 89–92.
- 43
- 44 Kulmala, M., A. Asmi, H. K. Lappalainen, U. Baltensperger, J.-L. Brenguier, M. C. Facchini,
45 H.-C. Hansson, Ø. Hov, C. D. O'Dowd, U. Pöschl, A. Wiedensohler, R. Boers, O. Boucher, G.
46 de Leeuw, H. Denier van den Gon, J. Feichter, R. Krejci, P. Laj, H. Lihavainen, U. Lohmann, G.

McFiggans, T. Mentel, C. Pilinis, I. Riipinen, M. Schulz, A. Stohl, E. Swietlicki, E. Vignati, M. Amann, M. Amann, C. Alves, S. Arabas, P. Artaxo, D. C. S. Beddows, R. Bergström, J. P. Beukes, M. Bilde, J. F. Burkhardt, F. Canonaco, S. Clegg, H. Coe, S. Crumeyrolle, B. D'Anna, S. Decesari, S. Gilardoni, M. Fischer, A. M. Fjæraa, C. Fountoukis, C. George, L. Gomes, P. Halloran, T. Hamburger, R. M. Harrison, H. Herrmann, T. Hoffmann, C. Hoose, M. Hu, U. Hörrak, Y. Inuma, T. Iversen, M. Josipovic, M. Kanakidou, A. Kiendler-Scharr, A. Kirkevåg, G. Kiss, Z. Klimont, P. Kolmonen, M. Komppula, J.-E. Kristjánsson, L. Laakso, A. Laaksonen, L. Labonnote, V. A. Lanz, K. E. J. Lehtinen, R. Makkonen, G. McMeeking, J. Merikanto, A. Minikin, S. Mirme, W. T. Morgan, E. Nemitz, D. O'Donnell, T. S. Panwar, H. Pawlowska, A. Petzold, J. J. Pienaar, C. Pio, C. Plass-Duelmer, A. S. H. Prévôt, S. Pryor, C. L. Reddington, G. Roberts, D. Rosenfeld, J. Schwarz, Ø. Seland, K. Sellegri, X. J. Shen, M. Shiraiwa, H. Siebert, B. Sierau, D. Simpson, J. Y. Sun, D. Topping, P. Tunved, P. Vaattovaara, V. Vakkari, J. P. Veefkind, A. Visschedijk, H. Vuollekoski, R. Vuolo, B. Wehner, J. Wildt, S. Woodward, D. R. Worsnop, G.-J. van Zadelhoff, A. A. Zardini, K. Zhang, P. G. van Zyl, V.-M. Kerminen, K. S. Carslaw, and S. N. Pandis, 2011. General overview: European Integrated project on Aerosol Cloud Climate and Air Quality interactions (EUCAARI) – integrating aerosol research from nano to global scales. *Atmos. Chem. Phys.*, 11, 13061-13143.

Kulmala, M., Kontkanen, J., Junninen, H., Lehtipalo, K., Manninen, H.E., Nieminen, T., Petäjä, T., Sipilä, M., Schobesberger, S., Rantala, P., Franchin, A., Jokinen, T., Järvinen, E., Äijälä, M., Kangasluoma, J., Hakala, J., Aalto, P.P., Paasonen, P., Mikkilä, J., Vanhanen, J., Aalto, J., Hakola, H., Makkonen, U., Ruuskanen, T.M., Mauldin III, R.L., Duplissy, J., Vehkamäki, H., Bäck, J., Kortelainen, A., Riipinen, I., Kurtén, T., Johnston, M.V., Smith, J.N., Ehn, M., Mentel, T.F., Lehtinen, K.E.J., Laaksonen, A., Kerminen, V.-M. and Worsnop, D.R. (2013) Direct observations of atmospheric nucleation, *Science* 339, 943-946.

Kulmala, M., Petäjä, T., Ehn, M., Thornton, J., Sipilä, M., Worsnop, D.R. and Kerminen, V.-M. (2014) Chemistry of atmospheric nucleation: On the recent advances on precursor characterization and atmospheric cluster composition in connection with atmospheric new particle formation, *Annu. Rev. Phys. Chem.* 65, 21-37.

Kumar, P., Garmory, A., Ketzel, M., Berkowicz, R and Britter, R (2009) Comparative study of measured and modelled number concentrations of nanoparticles in an urban street canyon. *Atmos. Environ.*, 43 (4), 949-958.

Kumar, Prashant, Matthias Ketzel, Sotiris Vardoulakis, Liisa Pirjola, Rex Britter, 2011. Dynamics and dispersion modelling of nanoparticles from road traffic in the urban atmospheric environment—A review. *J. Aerosol Sci.* 42(2011)580–603.

Kumar, P., Pirjola, L., Ketzel, M., Harrison, R.M., 2013. Nanoparticle emissions from 11 non-vehicle exhaust sources: A review. *Atm. Environ.* 67, 252-277.

Kumar, P., Morawska, L., Birmili, W., Paasonen, P., Hu, M., Kulmala, M., Harrison, R.M., Norford, L., Britter, R., 2014. Ultrafine particles in cities. *Environ. Int.* 66, 1–10

- 1 Lee, D.S., Pitari, G., Grewe, V., Gierens, K., Penne, J.E., Petzold, A., Prather, M.J., Schumann,
2 U., Bais, A., Berntsen, T., Iachetti, D., Lim, L.L., Sausen, R., 2010. Transport impacts on
3 atmosphere and climate: Aviation. *Atm. Environ.* 44, 4678–4734.
- 4
- 5 Lemmon, E. W. and Goodwin, A. R. H., 2000. Critical properties and vapor pressure equation
6 for alkanes C_nH_{2n+2} : normal alkanes and isomers for $n=4$ through $n=9$. *J. Phys. Chem. Ref. Data*
7 29 (1), 1-39.
- 8
- 9 Loane, C., Pilinis, C., Lekkas, T.D., Politis, M., 2013. Ambient particulate matter and its
10 potential neurological consequences. *Reviews in the Neurosciences* 24 (3), 323-335.
- 11
- 12 Malkki, M., Niemi J., Lounasheimo J., Myllynen M., Julkunen A., Loukkola K., 2010. Air
13 quality in the Helsinki Metropolitan Area in 2009. Helsinki Region Environmental Services
14 Authority (HSY) publications 2/2010, Edita Prima Oy, Helsinki, 124 pp.
- 15
- 16 Maricq M. M., 2007. Chemical characterization of particulate emissions from diesel engines: A
17 review. *J. Aerosol Sci.* 38, 1079-1118.
- 18
- 19 McMurry, P., (2000), A review of atmospheric aerosol measurements, *Atmospheric*
20 *Environment*, 34 pp. 1959–1999
- 21
- 22 Morawska, L., Bofinger, N. D., Kocis, L., Nwankwoala, A., 1998. Submicrometer and super
23 micrometer particles from diesel vehicle emissions. *Environmental Science and Technology* 32,
24 2033-2042.
- 25
- 26 Morawska, L., , Z. Ristovski, E.R. Jayaratne, D.U. Keogh, X. Ling, 2008, Ambient nano and
27 ultrafine particles from motor vehicle emissions: Characteristics, ambient processing and
28 implications on human exposure, *Atmospheric Environment*, 42, , Pages 8113–8138
- 29
- 30 Moussiopoulos N., Th. Flassak, D. Berlowitz and P. Sahm (1993) Simulations of the wind field
31 in Athens with the nonhydrostatic mesoscale model MEMO, *Environmental Software*, 8, 29-42.
- 32
- 33 Moussiopoulos N., P. Sahm and Ch. Kessler (1995) Numerical simulation of photochemical
34 smog formation in Athens, Greece - a case study, *Atmospheric Environment*, 29, 3619-3632.
- 35
- 36 Moussiopoulos N., Helmis C.G., Flocas H.A., Louka P., Assimakopoulos V.D., Naneris C.,
37 Sahm P., 2004. A modelling method for estimating transboundary air pollution in southeastern
38 Europe, *Environmental Modelling & Software* 19 (2004) 549–558.
- 39
- 40 Moussiopoulos N., I Douros, G Tsegas, S Kleanthous, E Chourdakis (2012) An Air Quality
41 Management System for Policy Support in Cyprus, *Advances in Meteorology*, Vol 2012, Article
42 ID 959280
- 43
- 44 Nel, A., Xia, T., Madler, L., Li, N., 2006. Toxic potential of materials at the nanolevel. *Science*,
45 311, 622-627.
- 46

- 1 Ntziachristos, Leonidas, and Zissis Samaras. 2000. "COPERT III. Computer Program to
2 Calculate Emissions from Road Transport. Methodology and Emission Factors (version 2.1)."
3 49. European Environment Agency.
4
- 5 Obaidullah, M., Verma, V.K., Ruyck, V.K., 2012. A Review on Particle Emissions from Small
6 Scale Biomass Combustion. *Int. J. Renew. Ener. Res.* 2 (1), 147-159.
7
- 8 Oberdörster, G., Sharp, Z., Atudorei, V., Elder, A., Gelein, R., Kreyling, W., Cox, C., 2004.
9 Translocation of inhaled ultrafine particles to the brain. *Inhalation Toxicology* 16, 1–9.
10
- 11 Olivares G., C. Johansson, J. Ström, H.C. Hansson (2007). The role of ambient temperature
12 for particle number concentrations in a street canyon, *Atmospheric Environment*, Volume 41, Issue
13 10, March 2007, Pages 2145-2155, ISSN 1352-2310, 10.1016/j.atmosenv.2006.10.068.
14
- 15 Paasonen, P., Asmi, A., Petäjä, T., Kajos, M.K., Äijälä, M., Junninen, H., Holst, T., Abbatt,
16 J.P.D., Arneth, A., Birmili, W., Denier van den Gon, H., Hamed, A., Hoffer, A., Laaksonen, A.,
17 Laakso, L., Leaitch, R., Plass-Dülmer, C., Pryor, S.C., Räisänen, P., Swietlicki, E.,
18 Wiedensohler, A., Worsnop, D.R., Kerminen, V.-M. and Kulmala, M. (2012) Warming-induced
19 increase in aerosol number concentration likely to moderate climate change, *Nature Geosci.*, 6,
20 438-442, doi: 10.1038/NGEO1800.
21
- 22 Petzold A, Weingartner E, Hasselbach J, Lauer P, Kurok C, Fleischer F. (2010). Physical
23 properties, chemical composition, and cloud forming potential of particulate emissions from a
24 marine diesel engine at various load conditions. *Environ. Sci. Technol.* 2010, May
25 15;44(10):3800-5. doi: 10.1021/es903681z.
26
- 27 Pohjola, M A, Pirjola, L, Kukkonen, J, Kulmala, M. 2003. Modelling of the influence of aerosol
28 processes for the dispersion of vehicular exhaust plumes in street environment. *Atmospheric*
29 *Environment* 37 (3), pp. 339-351.
30
- 31 Pohjola, M., L. Pirjola, A. Karppinen, J. Härkönen, H. Korhonen, T. Hussein, M. Ketzel, and J.
32 Kukkonen, 2007. Evaluation and modelling of the size fractionated aerosol particle number
33 concentration measurements nearby a major road in Helsinki – Part I: Modelling results within
34 the LIPIKA project. *Atmos. Chem. Phys.* 7, 4065-4080 ([http://www.atmos-chem-](http://www.atmos-chem-phys.net/7/4065/2007/acp-7-4065-2007.pdf)
35 [phys.net/7/4065/2007/acp-7-4065-2007.pdf](http://www.atmos-chem-phys.net/7/4065/2007/acp-7-4065-2007.pdf)).
36
- 37 Pirjola, L., Paasonen, P., Pfeiffer, D., Hussein, T., Hämeri, K., Koskentalo, T., Virtanen, A.,
38 Rönkkö, T., Keskinen, J., Pakkanen, T. A., Hillamo, R. E., 2006. Dispersion of particles and
39 trace gases nearby a city highway: Mobile laboratory measurements in Finland, *Atmos. Environ.*
40 40, 867-879.
41
- 42 Petzold, A., Weingartner, E.; Hasselbach, J., Lauer, P., Kurok, C. and Fleischer, F.
43 2010. Physical properties, chemical composition, and cloud forming potential of particulate
44 emissions from marine diesel engines at various load conditions. *Environ. Sci. Technol.* 44,
45 3800–3805.

- 1 Puustinen, A, Hameri, K, Pekkanen, J, Kulmala, M, De Hartog, J, Meliefste, K, Ten Brink, H,
2 Kos, G, Katsouyanni, K, Karakatsani, A, Kotronarou, A, Kavouras, I, Meddings, C, Thomas, S,
3 Harrison, RM, Ayres, JG, Van der Zee, S & Hoek, G 2007, 'Spatial variation of particle number
4 and mass over four European cities' *Atmospheric Environment*, vol 41, no. 31, N/A, pp. 6622-
5 6636.
- 6 Reche, C., Querol, X., Alastuey, A., Viana, M., Pey, J., Moreno, T., Rodríguez, S., González, Y.,
7 Fernández-Camacho, R., Sánchez de la Campa, A.M., de la Rosa, J., Dall'Osto, M., Prévôt,
8 A.S.H., Hueglin, C., Harrison, R.M., Quincey, P., 2011. New considerations for PM, black
9 carbon and particle number concentration for air quality monitoring across different European
10 cities. *Atmospheric Chemistry and Physics* 11, 6207–6227. [http://dx.doi.org/10.5194/acp-11-](http://dx.doi.org/10.5194/acp-11-6207-2011)
11 6207-2011.
- 12
- 13 Riipinen, I., Pierce, J.R., Yli-Juuti, T., Nieminen, T., Häkkinen, S., Ehn, M. Junninen, H.,
14 Lehtipalo, K., Petäjä, T., Slowik, J., Chang, R., Shantz, N.C., Abbatt, J., Leaitch, W.R.,
15 Kerminen, V.-M., Worsnop, D.R., Pandis, S.N., Donahue, N.M., Kulmala, M., (2011).
16 Organic condensation: a vital link connecting aerosol formation to cloud condensation nuclei
17 (CCN) concentrations. *Atmos. Chem. Phys.*, 11, 3865-3878.
- 18
- 19 Ristovski, Z., E.R. Jayaratne, M. Lim, G.A. Ayoko, L. Morawska, 2006, Influence of diesel fuel
20 sulphur on the nanoparticle emissions from city buses, *Environmental Science and Technology*,
21 40, pp. 1314–1320
- 22
- 23 Rönkkö, T., Virtanen, A., Vaaraslahti, K., Keskinen, J., Pirjola, L., Lappi, M., 2006. Effect of
24 dilution conditions and driving parameters on nucleation mode particles in diesel exhaust:
25 laboratory and on-road study, *Environ.*, 40, 2893-2901.
- 26
- 27 Rönkkö, T., Virtanen, Kannosto, J., Keskinen, J., Lappi, M., Pirjola, L., 2007. Characteristics of
28 nucleation mode particles in exhaust of Euro IV heavy duty diesel vehicle. *Environmental*
29 *Science and Technology*, 41, 6384-6389.
- 30
- 31 Samaras Z., Moussiopoulos N., Douros I., Samaras C., Vouitsis E., Tsegas G., Chourdakis E.,
32 Mitsakis E., Salanova-Grau J. M., Aifadopoulou G., Stamos I., Gotti A., Sarigiannis D. A.
33 (2012), Transport emissions and their impact on air quality in Athens: A case study in the
34 framework of TRANSPHORM project, *Proceedings of the 19th International Transport and Air*
35 *Pollution Conference 2012 (TAP)*, Thessaloniki, Greece, 26-27 November.
- 36
- 37 Santos-Juusela, V.D., Tuukka, P., Kousa, A., Hämeri, K., 2013. Spatial-temporal variations of
38 particle number concentrations between a busy street and the urban background. *Atmospheric*
39 *Environment* 79, 324-333.
- 40
- 41 Schaap, M., Timmermans, R.M.A., Roemer, M., Boersen, G.A.C., Builtjes, P.J.H., Sauter, F.J.,
42 Velders, G.J.M., Beck, J.P., 2008. The LOTOS-EUROS model: description, validation and latest
43 developments. *Int. J. Environ. Pollut.* 32 (2), 270–290.
- 44

- Schack Jr., C. J., Pratsinis, S. E., Friedlander, S. K., 1985. A general correlation for deposition of suspended particles from turbulent gases to completely rough surfaces. *Atmos. Environ.* 19, 953-960.
- Shi, J.P., Evans, D.E., Khan, A.A., Harrison, R.M., 2001. Sources and concentration of nanoparticles (< 10nm diameter) in the urban atmosphere. *Atm. Environ.* 45 (7), 1193-1202.
- Skamarock, W. C., J. B. Klemp, J. Dudhia, D. O. Gill, D. M. Barker, W. Wang, and J. G. Powers, 2005: A description of the Advanced Research WRF Version 2. NCAR Tech Notes-468+STR, <http://www.mmm.ucar.edu/wrf/users/pub-doc.html>
- Smith, K.R., Jerrett, M., Ross Anderson, H., Burnett, R.T., Stone, V., Derwent, R., Atkinson, R.W., Cohen, A., Shonkoff, S.B., Krewski, D., Pope III, C.A., Thun, M.J., Thurston, G., 2009. Public health benefits of strategies to reduce greenhouse-gas emissions: health implications of short-lived greenhouse pollutants. *Lancet, Series Health and Climate Change* 5, 1-13 DOI:10.1016/S0140-6736(09)61716-5
- Singh V., Sokhi R.S. and Kukkonen J., 2013, PM2.5 concentrations in London for 2008 - A modelling analysis of contributions from road traffic. *Journal of air waste management association*. Published online (DOI:10.1080/10962247.2013.848244)
- Snijder, A., B. Wester and S. van den Elshout, 2012, Improved spatially resolved emissions in the Rotterdam Rijnmond region. In: Matthias and Aulinger, CNSS report on activity 1 in workpackage 5: Monitoring and simulation of pollutant generation and spread. Institute of Coastal Research, Helmholtz-Zentrum Geesthacht, 2012: <http://cnss.no/wp-content/uploads/2012/12/monitoring-rap-web.pdf>
- Soares, J., A. Kousa, J. Kukkonen, L. Matilainen, L. Kangas, M. Kauhaniemi, K. Riikonen, J-P. Jalkanen, T. Rasila, O. Hänninen, T. Koskentalo, M. Aarnio, C. Hendriks, and A. Karppinen, 2014. Refinement of a model for evaluating the population exposure in an urban area, *Geosci. Model Dev.*, 7, 1855-1872, 2014, www.geosci-model-dev.net/7/1855/2014/, doi:10.5194/gmd-7-1855-2014.
- Sokhi, Ranjeet S., Hongjun Mao, Srinivas T.G. Srimath, Shiyuan Fan, Nutthida Kitwiroon, Lakhmal Luhana, Jaakko Kukkonen, et al. 2008. "An Integrated Multi-model Approach for Air Quality Assessment: Development and Evaluation of the OSCAR Air Quality Assessment System." *Environmental Modelling & Software* 23 (3) (March): 268–281. doi:10.1016/j.envsoft.2007.03.006.
- Solazzo, E., Bianconi, R., Vautard, R., Appel, K.W., Moran, M.D., Hogrefe, C., Bessagnet, B., Brandt, J., Christensen, J.H., Chemel, C., 2012. Model evaluation and ensemble modelling of surface-level ozone in Europe and North America in the context of AQMEII. *Atmos. Environ.* 53, 60–74.
- Solazzo, E., Bianconi, R., Pirovano, G., Matthias, V., Vautard, R., Moran, M.D., Wyatt Appel, K., Bessagnet, B., Brandt, J., Christensen, J.H., 2012. Operational model evaluation for

particulate matter in Europe and North America in the context of AQMEII. *Atmos. Environ.* 53, 75–92.

Sfetsos A., D. Vlachogiannis, N. Gounaris and A.K. Stubos (2005) On the identification of representative samples from large data sets, with application to synoptic climatology, *Theoretical and Applied Climatology*, Volume 82, Numbers 3-4, Pages 177-182.

Shahgedanova M., T. P. Burt and T. D. Davies (1998) *Synoptic Climatology of Air Pollution in Moscow*, *Theoretical and Applied Climatology*, Volume 61, Numbers 1-2, Pages 85-102.

Stern, R., Builtjes, P., Schaap, M., Timmermans, R., Vautard, R., Hodzic, A., Memmesheimer, M., Feldmann, H., Renner, E., Wolke, R., Kerschbaumer, A., 2008. A model inter-comparison study focussing on episodes with elevated PM10 concentrations. *Atmos. Environ.* 42 (19), 4567–4588.

Stolzel, Matthias, Susanne Breitner, Josef Cyrys, Mike Pitz, Gabriele Wölke, Wolfgang Kreyling, Joachim Heinrich, H-Erich Wichmann and Annette Peters, 2007. Daily mortality and particulate matter in different size classes in Erfurt, Germany. *J. Expos. Sci. Environ. Epidemiol.*, 2007, 17, 458-467. doi:10.1038/sj.jes.7500538

UNECE, 2010. Light Duty Diesel Vehicle Particle Number Round Robin. Informal Document GRPE-059-05. Transmitted by experts from OICA.

Velders, G.J.M., Aben, J.M., Jimmink, B.A., Geilenkirchen, G.P., Swaluw van der, E., Vries de, W.J., Wesseling, J., Zanten van, M.C., 2012. Background concentrations and deposition maps in the Netherlands (in Dutch). RIVM, Bilthoven, the Netherlands. Report 680362002/2012 (www.rivm.nl).

Denier van der Gon and Hulskotte, J., 2010. Methodologies for estimating shipping emissions in the Netherlands A documentation of currently used emission factors and related activity data, PBL Report 500099012, ISSN1875-2322, Bilthoven 2010. Available at <http://www.pbl.nl/en/publications/2010/Methodologies-for-estimating-shipping-emissions-in-the-Netherlands>

Vardoulakis, S., Fisher, B.E.A., Pericleous, K., Gonzales-Flesca, N., 2003. Modelling air quality in street canyons: a review. *Atmospheric Environment* 37, 155-182

Vignati, E., Wilson, J., Stier, P. (2004). M7: an efficient size-resolved aerosol microphysics module for large-scale aerosol transport models, *J. Geophys. Res.* 109,D22202.

Vouitsis, I., Ntziachristos, L., Samaras, Ch., Samaras, Z., 2014. Quantification of road transport particulate matter using detailed technology emission factors. TRA2014 Transport Research Arena 2014. Transport Solutions: from Research to Deployment - Innovate Mobility, Mobilise Innovation. 14-17 April 2014 Paris La Défense, France. Transport

Research Arena (TRA) 2014 Proceedings. Accession Number: 01528196.
 Pagination: 10p. Available at: <http://trid.trb.org/view/2014/C/1327771>.

von Bismarch-Osten, C., Birmili, W., Ketzel, M., Massling, A., Petäjä, T. and Weber, S. (2013) Characterization of parameters influencing the spatio-temporal variability of urban particle number size distributions in four European cities, *Atmos. Environ.* 77, 415-429.

Von Klot, S., Peters, A., Aalto, P., Bellander, T., Berglind, N., D'Ippoliti, D., Elosua, R., Hörmann, A., Kulmala, M., Lanki, T., Löwel, H., Pekkanen, J., Picciotto, S., Sunyer, J., Forastriere, F. and the HEAPSS study group (2005). Ambient air pollution is associated with increased risk of hospital cardiac readmission of myocardial infarction survivors in five European cities. *Circulation*, 112:3073–3079.

Wehner, B., Birmili, W., Gnauk, T., Wiedensohler, A., 2002. Particle number size distributions in a street canyon and their transformation into the urban-air background: measurements and a simple model study, *Atmospheric Environment* 36, 2215-2223.

Wesseling, J.P., Visser, G.Th., 2003. An inter-comparison of the TNO Traffic Model, field data and wind tunnel measurements. TNO, Utrecht, The Netherlands. Report 2003/207.

Westerdahl, D., Fruin, S.A., Fine, P.L., Sioutas, C., 2008. The Los Angeles International Airport as a source of ultrafine particles and other pollutants to nearby communities. *Atmospheric Environment* 42, 3143-3155.

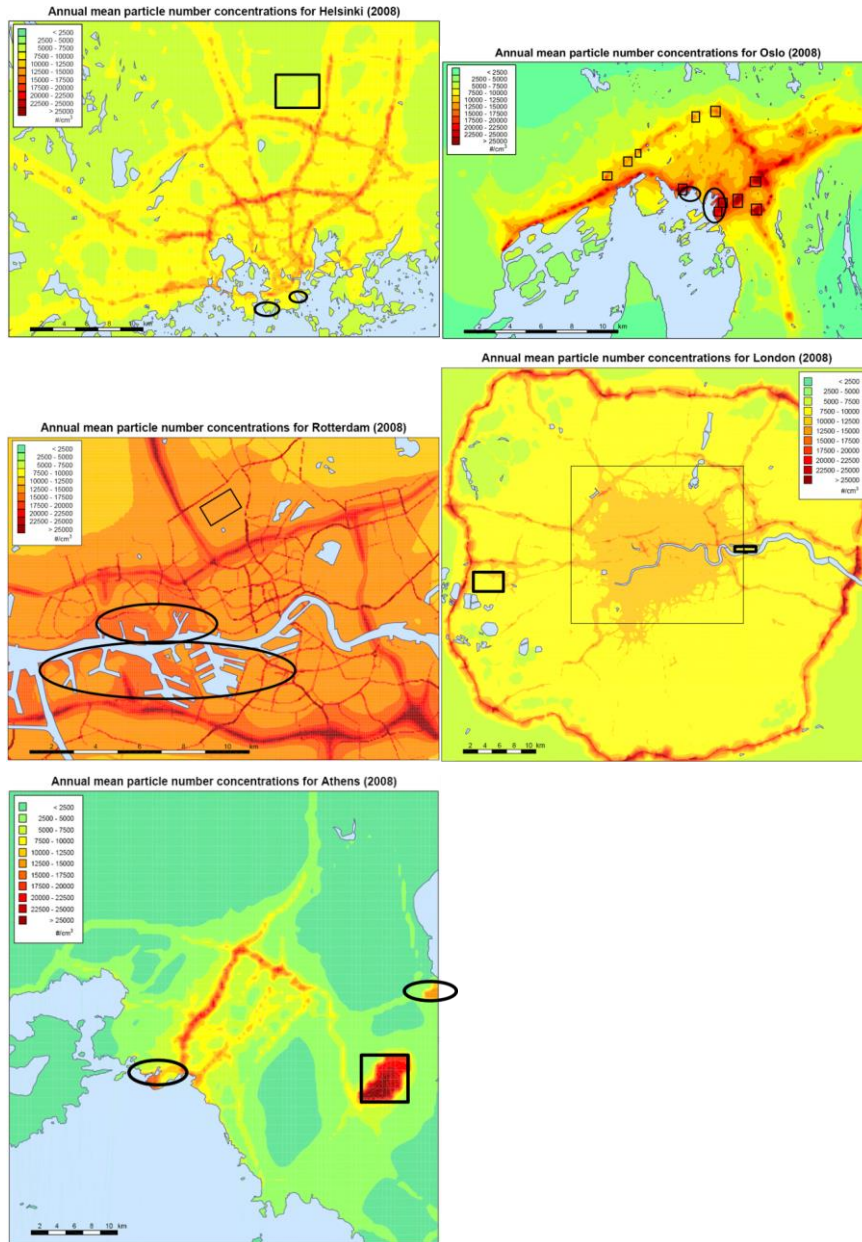
A. Wiedensohler, W. Birmili, A. Nowak, A. Sonntag, K. Weinhold, M. Merkel, B. Wehner, T. Tuch, S. Pfeifer, M. Fiebig, A. M. Fjåraa, E. Asmi, K. Sellegri, R. Depuy, H. Venzac, P. Villani, P. Laj, P. Aalto, J. A. Ogren, E. Swietlicki, P. Williams, P. Roldin, P. Quincey, C. Hüglin, R. Fierz-Schmidhauser, M. Gysel, E. Weingartner, F. Riccobono, S. Santos, C. Grüning, K. Faloon, D. Beddows, R. Harrison, C. Monahan, S. G. Jennings, C. D. O'Dowd, A. Marinoni, H.-G. Horn, L. Keck, J. Jiang, J. Scheckman, P. H. McMurry, Z. Deng, C. S. Zhao, M. Moerman, B. Henzing, G. de Leeuw, G. Löschau, and S. Bastian (2012). Mobility particle size spectrometers: harmonization of technical standards and data structure to facilitate high quality long-term observations of atmospheric particle number size distributions, *Atmos. Meas. Tech.* 5, 657-685.

Zhang, K. M. and Wexler, A. S., 2004. Evolution of particle number distribution near roadways - Part I: Analysis of aerosol dynamics and its implications for engine emission measurement. *Atmos. Environ.* 38, 6643-6653.

Zhang, K. M., Wexler, A. S., Zhu, Y. F., Hinds, W. C., Sioutas, C., 2004. Evolution of particle number distribution near roadways. Part II: The „road-to-ambient“ process. *Atmos. Environ.* 38, 6655-6665.

Zhu, Y., Fanning, E., Yu, R.C., Zhang, Q., Froines, J.R., 2011. Aircraft emissions and local air quality impacts from takeoff activities at a large International Airport. *Atmospheric Environment* 45, 6526-6533.

1 Annex 1. The locations of major harbours, airports and tunnel entrances in the target cities.



2
3 Figs. A1 a-e. The locations of major harbours, airports and tunnel entrances in the target cities.
4 The harbour areas have been marked with oval shapes. The airports have been marked with
5 rectangles, except for Oslo, for which the rectangles correspond to the locations of the tunnel
6 entrances. The geographical areas denoted by the shapes in the panels are approximates. Panels
7 a-e correspond to Helsinki, Oslo, Rotterdam, London and Athens, respectively.