

Methodology for evaluating lateral boundary conditions in the regional chemical transport model MATCH (v5.5.0) using combined satellite and ground based observations

E. Andersson¹, M. Kahnert^{1,2}, and A. Devasthale²

¹Department of Earth and Space Sciences, Chalmers University of Technology,
41296 Gothenburg, Sweden

²Swedish Meteorological and Hydrological Institute, 60176 Norrköping, Sweden

Correspondence to: E. Andersson (emma.andersson@chalmers.se)

Abstract. Hemispheric transport of air pollutants can have a significant impact on regional air quality, as well as on the effect of air pollutants on regional climate. An accurate representation of hemispheric transport in regional chemical transport models (CTMs) depends on the specification of the lateral boundary conditions (LBCs). This study focuses on the methodology for evaluating LBCs of two moderately long-lived trace gases, CO and O₃, for the European model domain and over a seven year period, 2006-2012. The method is based on combining the use of satellite observations at the lateral boundary with the use of both satellite and in situ ground observations within the model domain. The LBCs are generated by the global EMEP MSC-W model; they are evaluated at the lateral boundaries by comparison with satellite observations of the Terra/MOPITT sensor (CO) and the Aura/OMI sensor (O₃). The LBCs from the global model lie well within the satellite uncertainties for both CO and O₃. The biases increase below 700 hPa for both species. However, the satellite retrievals below this height are strongly influenced by the a priori data; hence they are less reliable than at, e.g, 500 hPa. CO is, on average, underestimated by the global model, while O₃ tends to be overestimated during winter, and underestimated during summer. A regional CTM is run with (a) the validated monthly climatological LBCs from the global model; (b) dynamical LBCs from the global model; and (c) constant LBCs based on in situ ground observations near the domain boundary. The results are validated against independent satellite retrievals from the Aqua/AIRS sensor at 500 hPa, and against in situ ground observations from the Global Atmospheric Watch (GAW) network. It is found that (i) the use of LBCs from the global model gives reliable in-domain results for O₃ and CO at 500 hPa. Taking AIRS retrievals as a reference, the use of these LBCs substantially improves spatial pattern correlations in the free troposphere as compared to results obtained with fixed LBCs

based on ground observations. Also, the magnitude of the bias is reduced by the new LBCs for both trace gases. This demonstrates that the validation methodology based on using satellite observations at the domain boundary is sufficiently robust in the free troposphere. (ii) The impact of the LBCs on ground concentrations is significant only at locations in close proximity to the domain boundary. As the satellite data near the ground mainly reflect the a priori estimate used in the retrieval procedure, they are of little use for evaluating the effect of LBCs on ground concentrations. Rather, the evaluation of ground-level concentrations needs to rely on in situ ground observations. (iii) The improvements of dynamic over climatological LBCs become most apparent when using AOT40 as a metric. Also, when focusing on ground observations taken near the inflow boundary of the model domain, one finds that the use of dynamical LBCs yields a more accurate representation of the seasonal variation, as well as of the variability of the trace gas concentrations on shorter time scales.

1 Introduction

Hemispheric transport of aerosols and trace gases receives increasing attention owing to its impact on air quality, climate and visibility. Several recent studies have focused on hemispheric transport and, related to that, the significance of lateral boundary conditions (LBCs) in regional chemical transport modelling. The growing interest in hemispheric transport has partly been prompted by an increase in the average amount of pollution that is transported over hemispheric scales (e.g. Fiore et al., 2009). Hemispheric transport can also have a strong episodic impact on regional air quality (Fiore et al., 2002; Oltmans et al., 2006). Observational data from satellites of various tracers, such as carbon monoxide (CO) (Heald et al., 2003) and ozone (O_3) (Zhang et al., 2008), corroborate that hemispheric transport of air pollutants can be important for regional and local air quality. Further, while air quality studies traditionally have a strong focus on near-surface concentration fields, climate effects of air pollution involve aerosols and radiatively active trace gases throughout the atmospheric column. Concentration fields aloft are typically even more strongly influenced by long-range transport than near-surface concentrations. Thus, in modelling systems that couple regional climate and regional air quality models (e.g. Thomas et al., 2015) hemispheric transport of pollutants is likely to play an important role.

In regional models, the impact of hemispheric transport is described by LBCs in the inflow region. The significance of LBCs for regional air quality modelling has been analysed by several investigators (e.g. Mathur, 2008; Rudich et al., 2008; Song et al., 2008). In general, the impact of LBCs on in-domain concentration fields can be quite significant; it increases with species lifetime and decreases with the transport time from the domain boundary. For instance, Barna and Knipping (2006) studied sulphate concentrations in a regional model covering the USA and Mexico; it was found that, depending on meteorological conditions and on the choice of boundary conditions, between 4–25 % of the sulphate concentration at the surface and at a location far away from the boundaries

can be attributed to particulate sulphate or sulphur dioxide precursors entering the model domain at the boundaries. Jiménez et al. (2007) found that ground-level ozone concentrations on the Iberian peninsula are strongly influenced by the boundary conditions of both ozone and ozone precursors. It has also been pointed out that ecologically sensitive regions can be particularly susceptible to negative impacts of air pollution (e.g. Pour-Biazar et al., 2010); in such cases the role of hemispheric air pollution transport can be even more significant.

Traditionally, regional models have often relied on prescribed boundary conditions that do not adequately capture temporal and spatial variations. This approach can be particularly problematic during episodes of elevated emissions outside the model domain, such as dust-storm episodes, volcanic eruptions, or forest fires, that are transported across the domain boundary. While global models do not face challenges related to lateral boundary conditions, they are often too coarse for investigating, e.g., regional air quality standard attainment. However, they can be used to provide boundary conditions for regional air quality models that can introduce improvements over fixed boundary conditions. For example, Tang et al. (2007) compared temporally and spatially varying boundary conditions to either time-averaged or time- and horizontally averaged boundary conditions; the regional model was run over the continental USA as well as over a smaller sub-domain with a finer resolution. The dynamic boundary conditions yielded the best correlation with aircraft observations of O₃ and CO concentrations, especially in the high-resolution model.

A direct evaluation of the boundary conditions is often complicated by the sparsity of observational data. For this reason, one often performs an indirect evaluation by comparing model results within the computational domain with observations. Tang et al. (2009) investigated the benefit of using dynamic boundary conditions derived from either ozone sonde observations or from global models to forecasting ozone concentrations in continental USA. The results confirmed that the boundary conditions can have a strong impact on simulated ozone concentrations near the surface and aloft, especially near the inflow boundary. Further, while the use of dynamic boundary conditions from global models can improve correlations between predicted and measured surface ozone, this approach can also contribute to an increased model bias.

A common problem in the evaluation of boundary conditions by comparing model results to in-domain observations is to disentangle the impact of boundary conditions from all other parameters and processes that influence the model results. Satellite observations offer a good spatio-temporal coverage, thus allowing to evaluate boundary conditions directly at the boundary. This approach has been chosen by, e.g., Henderson et al. (2014), who investigated lateral boundary conditions of ozone and carbon monoxide in a regional air quality model for the continental USA. Pfister et al. (2011) made combined use of measurements from aircraft, ozone sondes, and observations of CO and O₃ from the TES instrument onboard NASA's Aura satellite, as well as modelling results from the global model MOZART-4. The study focused on the inflow of air pollution into California during the summer months. The authors found that the global model was able to reproduce about half of

the free tropospheric variability when confronted with observational data. When used as LBCs in
95 a regional model, the variability in the pollution inflow strongly impacted the surface concentrations
of CO and O₃ over California. In their conclusions the authors identify the evaluation of LBCs in
regional models as one of the essential elements in regional model validation studies. They found
it essential to evaluate both the spatio-temporally averaged background fields and the spatial and
temporal variation of the LBC. However, they also concluded that, owing to high computational
100 demands, nesting of global/hemispheric models with regional models may not always be practicable
in all types of applications.

An alternative to the use of global models is to derive LBCs from satellite observations. For
instance, Pour-Biazar et al. (2011) employed ozone observations from the OMI instrument onboard
NASA's Aura satellite as well as aerosol optical depth obtained from MODIS onboard NASA's Terra
105 and Aqua satellites to produce LBCs for the regional air quality model CMAQ, which was run for
the continental USA. The analysis showed significant improvements for O₃ concentrations in the
free troposphere and for PM_{2.5} in the boundary layer.

This study aims to evaluate LBCs from a global CTM, the EMEP MSC-W model by comparing
them with satellite retrievals and by investigating the impact of the LBCs by implementing them into
110 a regional CTM, the MATCH (Multi-scale Atmospheric Transport and CHemistry) model developed
by the Swedish Meteorological and Hydrological Institute. There are a large number of regional
models being used in Europe, so a robust methodology for evaluation of lateral boundary fields for
the European model domain has a potentially large user community. A similar direct evaluation, on
domain boundaries, was conducted by Henderson et al. (2014) over the North American domain, but
115 no similar studies has, to our knowledge, been done over the European domain.

The evaluation methodology is divided into two major parts. First, the LBCs from the global
EMEP model are directly compared at the lateral boundaries of the European model domain, with
satellite retrievals from the Terra/MOPITT (Measurements Of Pollution In The Troposphere) and
Aura/OMI (Ozone Monitoring Instrument) instruments. Secondly, the study investigates the impact
120 of LBCs on regional concentration fields by applying the LBCs from the global CTM, to the regional
CTM, MATCH. The MATCH model results are compared to satellite retrievals from the Aqua/AIRS
(Atmospheric InfraRed Sounder) instrument as well as to ground based measurements. Using the
global CTM as LBCs gives the benefits of studying the impacts of using dynamical or climatological
LBCs, which would not be possible if using satellite retrievals, due to the time resolution. The
125 latter part of the evaluation is done by addressing the following questions: (i) How strongly are
concentrations near the surface influenced by the LBCs? (ii) How are the concentrations influenced
aloft in the troposphere at 500 hPa? (iii) What are the benefits of using dynamic vs climatological
LBCs?

The outline of this paper is as follows. Sect. 2 presents the models and the observations together
130 with a more detailed description of the methodology of this evaluation, which is the main focus of

this paper. Section 3 shows the results from the evaluation processes, and concluding remarks are given in Sect. 4.

2 Models, measurements and methods

2.1 The EMEP model

135 The EMEP MSC-W chemical transport model has been developed for the European Monitoring and Evaluation Programme (EMEP) at the Meteorological Synthesizing Centre West (MSC-W, see www.emep.int). The EMEP model has been specifically developed to support policy work of the Convention on Long-range Transboundary Air Pollution (CLRTAP, http://www.unece.org/env/lrtap/lrtap_h1.html). EMEP model results have played an important part in the development of emission reduction scenarios, for both the Convention (now comprising 51 Parties, including USA and Canada) and increasingly for the European Commission (Amann et al., 2011; Simpson, 2013).

The EMEP MSC-W model (rv4.5(svn 2868)) has been described in detail by Simpson et al. (2012) (with updates in Simpson et al., 2013; Tsyro et al., 2014). Although traditionally run on the European scale with grid-sizes of around 30–50 km (Jonson et al., 2006; Simpson et al., 2006b; Fagerli and Aas, 2008; Bergström et al., 2012), the model is increasingly being used for smaller scale applications, e.g. 2–5 km grids over the UK and Norway (Vieno et al., 2010; Karl et al., 2014), or globally (Sanderson et al., 2008; Jonson et al., 2010). In standard usage, the EMEP model has 20 vertical layers extending from the ground to 100 hPa (about 16 km), using terrain-following coordinates. The lowest layer has a depth of about 90 m. Meteorological data are taken from the European Centre for Medium Range Weather Forecasting Integrated Forecasts System (ECMWF-IFS) model (<http://www.ecmwf.int/en/research/modelling-and-prediction>).

EMEP model results for O₃ from the global model version were compared with ozone-sonde data by Jonson et al. (2010) and found to reproduce observed values. Model results for CO, generated from both the European and global scale runs, have been compared with column data from FTIR measurements at six sites (Angelbratt et al., 2011). Comparisons were complicated by the 100 hPa limit of the EMEP model and the fact that some of the stations were high altitude sites (hence above the planetary boundary layer sometimes), but mean CO concentrations were captured within 10–22% by the European-scale model, and within 1–9% by the global model. Further description and model runs of the global EMEP model can be found in the EMEP Status Report, Fagerli et al. (2014).

160 For the present study, the EMEP model has been run on a global scale, with horizontal resolution of 1° × 1° latitude/longitude. Concentrations of CO, O₃ and other components have been exported every 3 h for use as LBC's to MATCH.

2.2 The MATCH model

MATCH is a three dimensional, Eulerian offline model that has been developed at the Swedish
165 Meteorological and Hydrological Institute (SMHI). It is highly flexible and can be used for different
scenarios, regions and scales. The modelling system includes a three-dimensional variational data
assimilation module (Kahnert, 2008, 2009) and an aerosol dynamics model (Kokkola et al., 2008;
Andersson et al., 2015). Studies have been performed at both urban scales (Gidhagen et al., 2012) and
regional scales (Andersson et al., 2006). As with the EMEP model, It is also part of the core services
170 in the European air quality ensemble forecasting system that has been developed in the EU FP7-
project *Monitoring Atmospheric Composition and Climate* (MACC) ([http://www.gmes-atmosphere.
eu/about/project_structure/regional/r_ens/](http://www.gmes-atmosphere.eu/about/project_structure/regional/r_ens/)). For full descriptions of the model, see Robertson et al.
(1999) and Andersson et al. (2015).

In this study we use the developmental top-version of MATCH, which is based on the latest version
175 5.5.0. The MATCH model is set up over Europe, covering a range of 35° of longitude and 43° of
latitude in a rotated lat-lon grid, with the horizontal resolution of $1^\circ \times 1^\circ$. The model has 40 vertical
hybrid η layers ranging from the surface up to about 13 hPa. These η levels are varying at each
gridpoint to better follow the topography. The meteorological input data are read every three hours,
and interpolated to hourly fields. Here, analysed data from the numerical weather prediction model
180 HIRLAM (HIgh-Resolution Limited-Area Model) (Undén et al., 2002) are used, where analysed
data are available every six hours, and forecast data are available every three hours.

Boundary conditions can be specified in MATCH in three different ways. The simplest option
is to specify fixed lateral values at the western, eastern, northern, southern, and top boundaries,
respectively. The second option is to specify vertical boundary profiles at discrete latitudes where
185 the intermediate latitudes are derived by linear interpolation. The third option is to read in gridded
boundary fields; one can either use dynamic boundary conditions from a large-scale model, or some
climatology based on time-averaged model results or on satellite retrievals. Previously, the first two
options have predominantly been used, but in this study the constant lateral boundaries for CO and
O₃ are replaced by and compared to dynamic and climatological lateral boundary fields from the
190 global EMEP model. The climatological LBCs, which are used in Sect. 3.1, consist of a monthly
climatology based on data from 2006–2012, whereas the dynamic LBCs corresponds to 3 hourly
data for the same period. These two different runs will henceforth be referred to as ELBCc and EL-
BCd, respectively. The original LBCs (henceforth referred to as ORIG) are monthly and seasonally
varying boundary conditions which partially are based on large-scale model runs reported in Näs
195 et al. (2003) and back-trajectory analysed measurements from 1999 and EMEP stations close to the
model-domain boundaries (Solberg et al., 2005). All ORIG LBCs are described and tabulated in
Andersson et al. (2006).

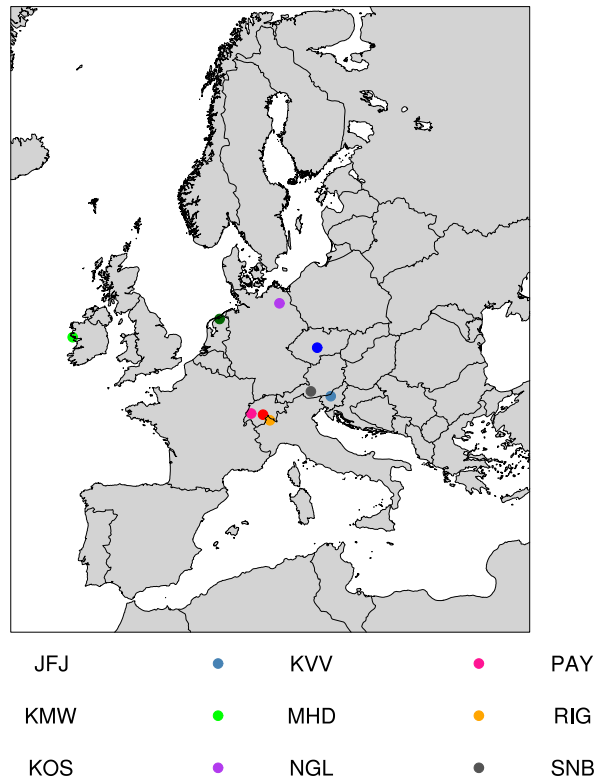


Figure 1. Map of the European model domain of the regional model, also showing the ground based measurement stations, summarised in Table 1.

2.3 Satellite retrievals

Following the work by Henderson et al. (2014) for the North American region where the global CTM GEOS-Chem was used to generate boundary conditions, we evaluate LBCs for the European model domain by comparison with satellite retrievals. The evaluation is done by collocating and extracting grid cells corresponding to the regional boundaries surrounding Europe, see Fig. 1; time averages are created for the period 2006–2012.

The O_3 model data are compared with satellite retrievals from the OMI sensor onboard the Aura satellite. The OMI sensor uses two wavelength channels to retrieve a ozone partial column profile, OMI UV1 (270.0–308.5 nm) and the first part of OMI UV2 (311.5–330.0 nm), where the longer wavelengths at 330 nm are more affected by the changes of ozone in the troposphere (Kroon et al., 2011). The retrieval algorithm is based on the optimal estimation method (Rodgers, 2000); for full description of the retrievals see Bhartia (2002). The OMI data used in this evaluation correspond to Level 2 data, version 3 (OMO3PR), for the whole period of 2006–2012. Filtering of the data is done according to setting all the processing quality flags to zero, see the User Guide for ozone products

http://disc.sci.gsfc.nasa.gov/Aura/additional/documentation/README.OMI_DUG.pdf. During the evaluation period, the OMI instrument has suffered from three different “row anomalies”, the first one starting on 25 June 2007, the second one starting 11 May 2008 and the third one starting on 24 January 2009. These anomalies affect all wavelengths at certain viewing angles of OMI, but are filtered out, using the variable ReflectanceCostFunction, less than 30 (Kroon et al., 2011, J. F. de Haan, personal communication at Koninklijk Nederlands Meteorologisch Instituut, KNMI, 2015). The data was downloaded from the on-line archive (ftp://aurapar2u.ecs.nasa.gov).

The CO model data are evaluated against satellite retrievals from the MOPITT instrument on-board the Terra satellite. MOPITT detects CO by gas correlation radiometry and retrieves the data by a differential absorption method in two infrared spectral bands. The full description of the retrieval algorithm is found in Deeter et al. (2003). The retrieved MOPITT data used in this study correspond to Level 3 version 6, using both the thermal and near infrared spectral bands, MOP03JM with no additional filtering. MOPITT data for August and September of 2009 were not available and therefore not evaluated.

When comparing the vertical distribution of model data with satellite retrievals it is important to let the model data undergo the same degree of smoothing and get the same a priori and averaging kernel dependence as the satellite retrievals. This is done by applying Eq. (1) which is taken from the MOPITT Product User’s Guide (Deeter, 2009, 2013).

$$\hat{y}_{rtv} = y_a + A(y_m - y_a), \quad (1)$$

where \hat{y}_{rtv} corresponds to retrieved or smoothed data, y_a is the a priori profile which is used to constrain the retrievals to fall within physically realistic solutions, A is the averaging kernel and y_m is the original prediction, in this case the EMEP model data. It is important to note that the averaging kernel in MOPITT is used for logarithmic concentrations fields, i.e. \log_{10} (VMR) (Volume Mixing Ratio). This expression can also be used for the OMI data, but with the difference of using the natural logarithm (Kroon et al., 2011). This smoothing error, which is added to the model data through Eq. (1), is associated with the shape and magnitude of the measurement weighting functions and gets diminished when, either, the averaging kernels goes towards delta functions, or when the difference between y_a and y_m gets smaller (Deeter et al., 2012).

In the analysis, two months are chosen, January and August, to represent the winter and summer season and the low and high level periods of ozone. The statistical metrics used, throughout this study, are the bias and correlation, according to Eqs. (2) and (3).

$$\text{bias} = \frac{1}{N} \sum_{i=1}^N \frac{x_{m,i} - x_{o,i}}{x_{o,i}} \cdot 100\% \quad (2)$$

$$\text{correlation} = \sum_{i=1}^N \frac{(x_{m,i} - x_{m,avg}) \cdot (x_{o,i} - x_{o,avg})}{\sigma_m \cdot \sigma_o} \quad (3)$$

where N is the number of data points, x_m corresponds to the model data, x_o to the measurement data, x_{avg} and σ are the arithmetic mean and standard deviation of each data set, respectively.

Retrievals from the Atmospheric InfraRed Sounder (AIRS) onboard of the Aqua satellite are employed for validating MATCH results for O_3 and CO computed with different sets of LBCs. The AIRS sensor has several physical retrievals, among them the trace gases used in this study, CO and O_3 . AIRS is a hyperspectral instrument that is sounding in the thermal spectrum and provides the longest record (since 2002) of the profiles of these gases retrieved simultaneously from the same sensor, Chahine et al. (2006). Over the last decade retrieval algorithms have been continuously improved and validated. The uncertainties and sensitivities are also better understood and documented (Divakarla, 2008; Fetzer, 2006; Xiong et al., 2008; McMillan et al., 2011; Warner et al., 2013). We used the monthly Level 3 data ($1^\circ \times 1^\circ$ resolution), which suits best to our purpose of evaluation (i.e. investigating the large scale statistics), from the most recent Version 6 release of the products (Texeira, 2013; Tian, 2013). Thomas and Devasthale (2014); Devasthale and Thomas (2012) have previously demonstrated the usefulness of AIRS Level 3 data in investigating the large-scale variability of CO over the northernmost part of the study area. All satellite retrievals from OMI, MOPITT and AIRS were downloaded from NASA’s REVERB website (<http://reverb.echo.nasa.gov/reverb>).

2.4 In situ ground observations

The ground stations used in this study are summarised in Table 1 and Fig. 1. All the stations, except one, have hourly data for at least six out of the seven years 2006–2012, for both CO and O_3 . The station that does not have hourly data is the Irish station Mace Head, that has continuous event data for CO between 2006–2012. All measurement data were downloaded from the GAW-WDCGG website (<http://ds.data.jma.go.jp/gmd/wdcgg/wdcgg.html>).

Table 1. The names and abbreviation ground measurement stations used in the evaluation of O_3 and CO in MATCH.

Name	Country	Altitude (m a.s.)	Latitude ($^\circ$ N)	Longitude ($^\circ$ E)
Jungfraujoch (JFJ)	Switzerland	3580	46.55	7.99
Kollumerwaard (KMW)	the Netherlands	0	53.33	6.28
Kosetice (KOS)	Czech Republic	534	49.58	15.08
Krvavec (KVV)	Slovenia	1720	46.30	14.53
Mace Head (MHD)	Ireland	8	53.33	-9.9
Neuglobsow (NGL)	Germany	65	53.17	13.03
Payerne (PAY)	Switzerland	490	46.82	6.95
Rigi (RIG)	Switzerland	1031	46.07	8.45
Sonnblick (SNB)	Austria	3106	47.05	12.95

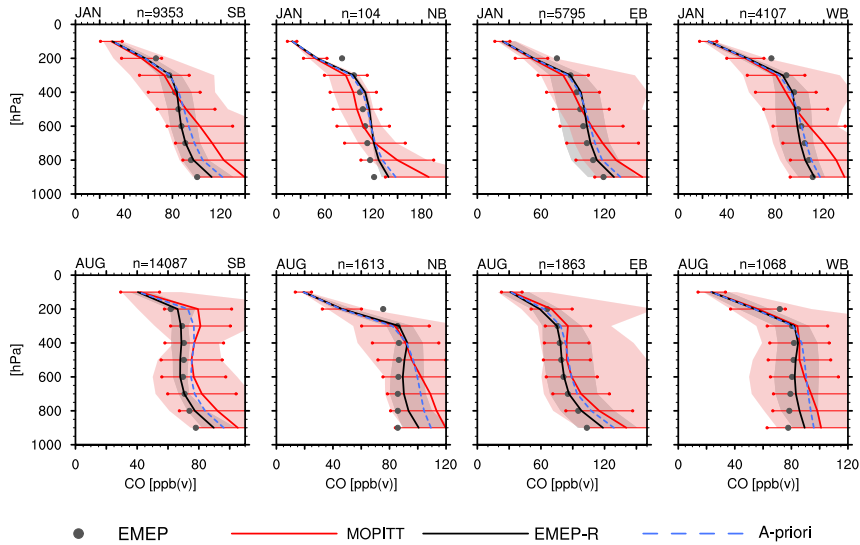


Figure 2. Carbon monoxide mixing ratios for January (first row) and August (second row) at the four cardinal boundaries (denoted SB, NB, EB and WB), observed by MOPITT (red solid line) and simulated retrievals from EMEP (black solid line). The retrievals (EMEP-R) are calculated by using Eq. (1) with EMEP model data (grey dots) and applying MOPITT’s averaging kernel and adding the a-priori profile (blue dashed line). The red and grey shaded area correspond to the range of values in which the satellite and retrieval values vary at each level. The satellite uncertainties are represented by the red horizontal lines.

3 Results

270 3.1 Evaluation of lateral boundary conditions

Figure 2 presents the comparison of CO at the lateral boundaries. The four columns show results for the Southern, Northern, Eastern, and Western boundaries, while the top and bottom rows show results for January and August, respectively. The original EMEP model results are represented by grey dots, the smoothed EMEP results are shown as black solid lines, and the MOPITT retrievals and the a priori estimate are depicted as solid red and dashed blue lines, respectively. The maximum range within which the satellite retrievals and the smoothed model results vary are shown as red and grey shaded areas, respectively. The red horizontal lines represent the uncertainties of the satellite observations. As expected, the smoothed model results always lie between the original model results and the a priori estimate. Around 500 hPa, the smoothing procedure produces results that are least influenced by the a priori; above that altitude and, even more so, near the surface, the smoothed model results are more closely following the a priori. This reflects the fact that the averaging kernel peaks in the mid-troposphere, where the satellite observations are most sensitive (Deeter et al., 2007).

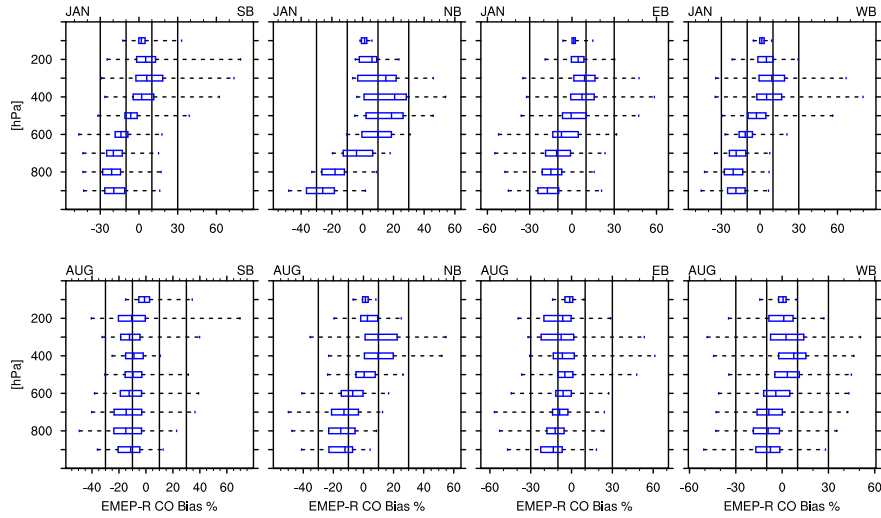


Figure 3. Retrieved bias for each altitude, shown as box-plots, between EMEP and MOPITT for CO and the same months and cardinal boundaries as Fig. 2. The blue boxes corresponds to the interquartile range, the black dotted lines show the range of bias at each altitude, the blue line within each box represents the median. The four black vertical lines show the ± 10 and $\pm 30\%$ bias range.

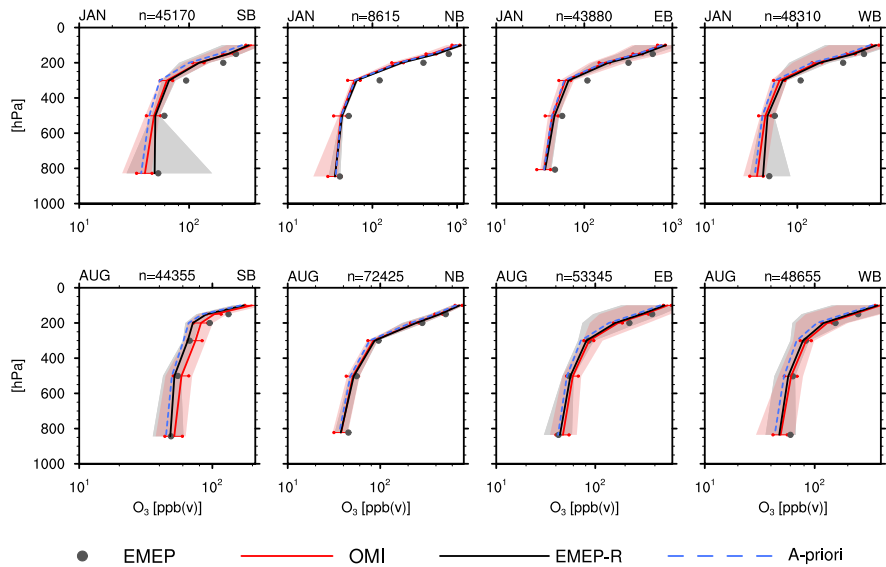


Figure 4. Same as Fig. 2 but for ozone and the satellite retrievals from OMI.

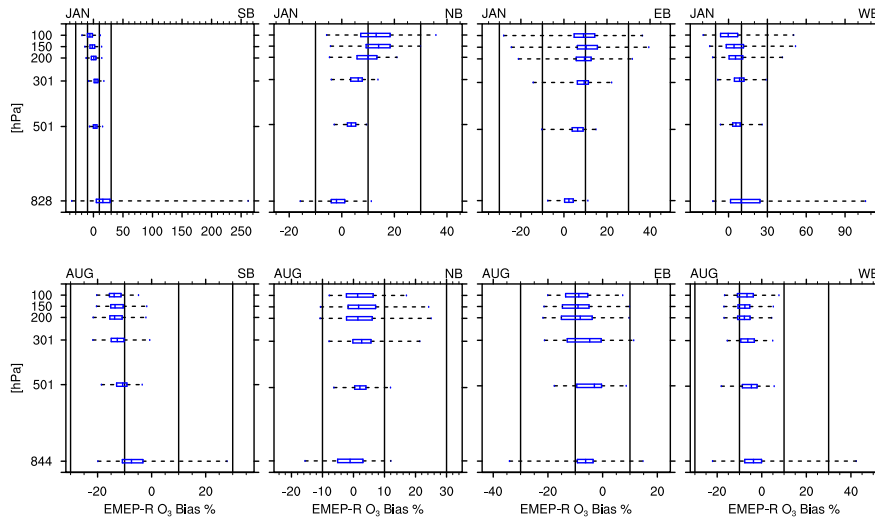


Figure 5. Same as Fig. 3, but for OMI and O_3 .

The comparison of smoothed model results in Fig. 2 is complemented by Fig. 3, which illustrates the bias ranges at each altitude bin. The rows and columns are as in Fig. 2. The blue boxes represent the interquartile range, the black dotted lines show the range of bias at each altitude, and the blue line inside each box represents the median. The vertical lines represent the ± 10 and ± 30 % bias ranges. The most important fact we learn from Figs. 2 and 3 is that the simulated CO lies well within the uncertainties of the satellite retrievals at all four boundaries and months. Figure 3 confirms the relatively small difference between the EMEP model and the MOPITT data. The largest differences appear between EMEP and MOPITT below 700 hPa, with an average bias of -17 %. At altitudes in the range of 700–400 hPa, the agreement between the smoothed model results and the MOPITT retrievals tends to be least biased. As pointed out earlier, this is also the range where the instrument is most sensitive. Hence the smoothing procedure produces results in this altitude range that rely least on the a priori estimate.

Ozone concentrations retrieved from the OMI instrument and computed by the EMEP model are found in Fig. 4, and Fig. 5 presents the corresponding bias ranges. The smoothed EMEP results for ozone lie well within the uncertainties of the satellite retrievals, except at around 800 hPa at the southern boundary in January. Here, Fig. 5 shows a correspondingly large bias. In January there is a general overestimation of O_3 by EMEP with an average bias of 7 %, whereas the August months show an average underestimation of about 5 %.

In this comparison, it is important to keep in mind the effect of the smoothing procedure. As pointed out earlier, this approach ensures that the comparison of model results and satellite retrievals is self-consistent. This is particularly important at those altitudes at which the instrument is least sensitive, which usually includes the altitude range near the surface. However, self-consistency alone

305 does not guarantee the reliability of the validation. In the mid-troposphere, where the instruments
tend to be most sensitive, the smoothing procedure alters the model results only little, and the satel-
lite retrievals are mostly influenced by the measured signal rather than by the a priori estimate. Thus
the comparison can be expected to provide us with a reliable model validation procedure at these
altitudes. By contrast, near the surface both the satellite retrievals and the smoothed model results
310 are strongly influence by the a priori estimate. It is, therefore, by no means obvious that the model
validations presented in Figs. 2–5 allow us to conclude much about the reliability of the EMEP LBCs
near the surface. To learn more about the effect of boundary fields on in-domain concentrations, we
continue the investigation with an indirect validation of the model-derived LBCs. To this end, we
force the regional MATCH model with the EMEP LBCs and compare the results to independent
315 satellite retrievals from the Aqua/AIRS instrument in the free troposphere, and to in-domain ground
concentrations from the GAW network. One important question in this comparison is to what extent
the validation procedure we performed for the EMEP LBCs can be relied upon in the free tropo-
sphere and near the surface, respectively. We also force the MATCH model with its originally used
boundary conditions (ORIG), which are based on combined use of a global model climatology and
320 on ground observations near the lateral boundaries. We compare the independent observations to
MATCH results obtained with ORIG as well as with dynamic (ELBCd) and climatological (ELBCc)
LBCs from the global EMEP model to assess possible improvements achieved with the validated
EMEP boundary conditions, and to assess the possible benefits of using dynamic rather than clima-
tological LBCs.

325 **3.2 Evaluation of MATCH results near the surface**

To better understand the impact of the new LBC at the surface, and to find out what possible benefits
there might be in using dynamical vs climatological LBCs, the MATCH model runs are compared
at the lowest model layer with each other and to the ground observations, in Table 1 at the surface.
The model data are collocated with the measurement data by extracting the grid cell lying closest
330 to the measurement station in latitude, longitude, and local time. For the surface comparison we
use a relative altitude method to extract the best corresponding model layer. This latter method is
based upon the work done by Loibl et al. (1994), where the relative altitude between the stations
altitude above sea level and the minimum altitude within a certain search radius, typically around
5 km, is used to find the corresponding model level. In this study the search radius is about 5 km,
335 where the reference topography has a resolution of 1 arc-min (1.8 km) and can be found at <https://www.ngdc.noaa.gov/mgg/global/global.html>.

Figures 6 and 7 show the CO and O₃ results of the different MATCH model runs at the lowest
model layer, averaged over the period 2006–2012. The new ELBC runs clearly show a reduction
of the CO mixing ratios throughout the model domain, on average by 15 %. On the other hand O₃
340 increases all over the model domain, on average by 21 %.

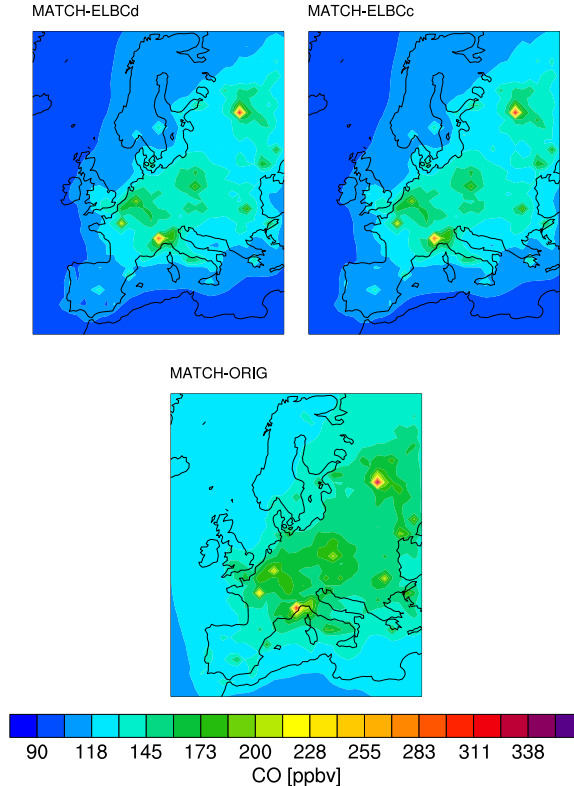


Figure 6. CO volume mixing ratios at the lowest model layer for the ELBCd (top left subplot), ELBCc (top right subplot) and ORIG (bottom subplot) runs of the MATCH model. The results are averaged over the entire period 2006–2012.

To obtain information about the general behaviour of the ELBC and ORIG runs of MATCH, a comprehensive statistical analysis was done, investigating different time periods and statistical metrics for all stations. As a summary of the findings, Taylor diagrams (Taylor, 2001) were constructed, with statistics from the period 2006–2012. Figures 8 and 9 show the Taylor diagram with bias indicators, for CO and O₃. Essentially these diagrams summarise four statistical parameters, the root mean square error, the correlation, the ratio between the variances (model/measurements) and the bias. The correlation is given as the cosine angle and can be read on the perimeter and have lines indicating different correlations. The root mean square corresponds to the distance from the “REF” indicator on the *x* axis and have dotted semicircles around this point to indicate the distance. The normalised variance, or standard deviation, is given as the radii from the origo point and are indicated with dashed quarter circles. The bias is indicated with markers, listed with triangles and circles in the diagram.

When changing from ORIG to ELBC, the CO results in Fig. 8 show very little change in the statistical parameters, except for the bias. The correlation gets slightly improved for three of the

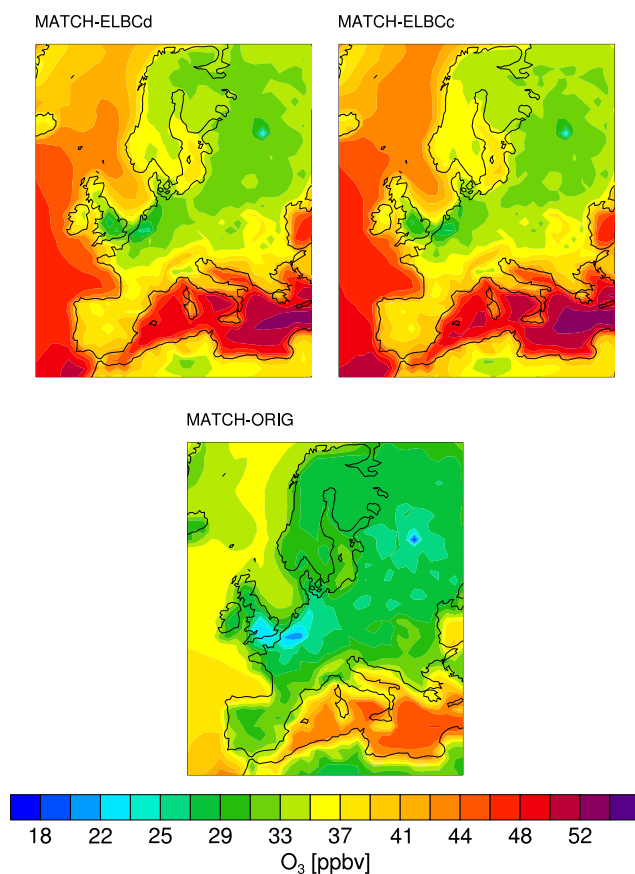


Figure 7. Same as Fig. 6, but for O₃.

355 stations, KMW, KVV and MHD, whereas it otherwise does not change or it correlates a little bit worse. The normalised variance is low, below one, for all MATCH runs, and do not differ much between the runs. The root mean square does not change significantly either. The largest change is seen in the bias, where the new ELBC runs both underestimate the amount of CO more than the ORIG run, at all stations. These results are in line with earlier findings from Monks et al. (2015) and
 360 Stein et al. (2014). Monks did a comprehensive study, where eleven models, were inter-compared with CO, O₃ and OH, concluded a general underestimation of CO by all the models in the Arctic and the Northern Hemisphere. Stein investigated the underestimation of CO in wintertime and in the Northern Hemisphere and concluded that it partially comes from an underestimation of wintertime road traffic emissions, too high dry deposition rates in boreal forests, and possibly from errors of the
 365 geographical and seasonal distribution of OH concentrations.

Figure 9 illustrates the summary of the O₃ statistics for the nine ground observation sites. The new ELBC MATCH model runs increase the amount of O₃ and clearly improve the variance, where the normalised standard deviation gets closer to one, “REF”. The bias varies among the stations, but

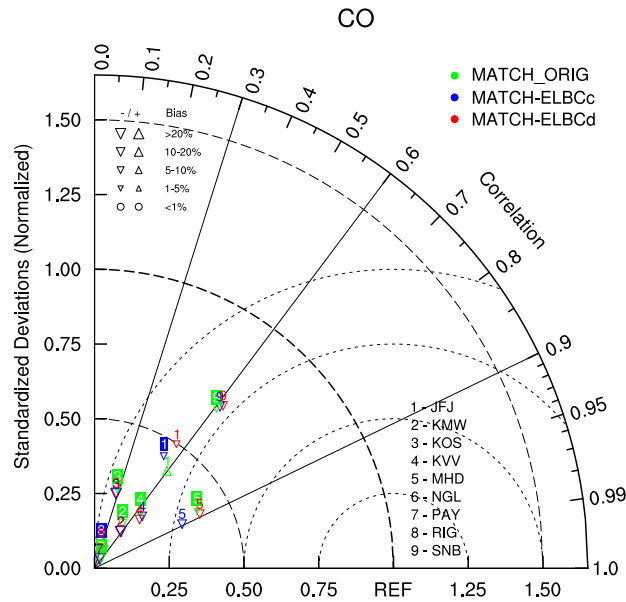


Figure 8. Taylor diagram showing CO statistics for all the chosen GAW stations, for the three MATCH model runs, ELBCd as red, ELBCC as blue and ORIG as green, with statistics from 2006–2012. The correlation is given by the cosine angle from the horizontal axis, the root mean square error corresponds to the distance from the “REF” indicator on the x axis, the ratio between the variances of the model and the measurements, here referred to as the normalised standard deviation and are represented by the radius or distance from the origo and the bias is symbolised next to each marker. Standard deviations larger than 1.75 are represented with their standard deviation/correlation as numbers underneath the diagram. The bias symbols are indicated in the list to the top left.

gets over all improved. Nevertheless, the correlation gets slightly worse for all stations except MHD,
 370 where it remains unchanged.

Time series of CO and O₃ corresponding to the year 2011 for all three model runs at the Mace
 Head station are investigated and shown in Figs. 10 and 11, respectively. These figures show the daily
 maximum of ozone and the CO mixing ratios at the same time of the day at which O₃ mixing ratios
 peak, which usually occurs in the afternoon. We chose the time of the O₃ maxima to avoid problems
 375 with nocturnal shallow boundary layers. It is evident that there are bias problems for both ELBC runs
 and both trace gases. CO is underestimated more strongly with the new ELBC runs than the ORIG
 run, and O₃ is slightly more overestimated compared to the ORIG run. Examining the correlation,
 the ELBCd run captures more of the variability, especially on shorter time scales. Looking only at the
 summer season of 2011 the correlation is higher, 0.77 compared to 0.56 (ELBCC) and 0.59 (ORIG)
 380 for CO, and 0.72 compared to 0.64 (ELBCC) and 0.66 (ORIG) for O₃. For the year of 2011, the
 larger scale (seasonal) variation dominates, and the correlation is unchanged for CO and improved

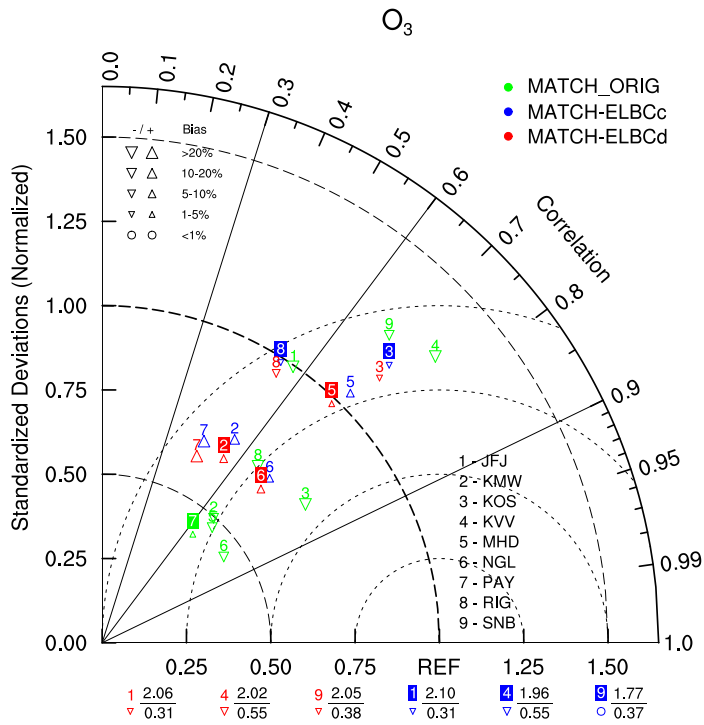


Figure 9. Same as Fig. 8, but for O₃.

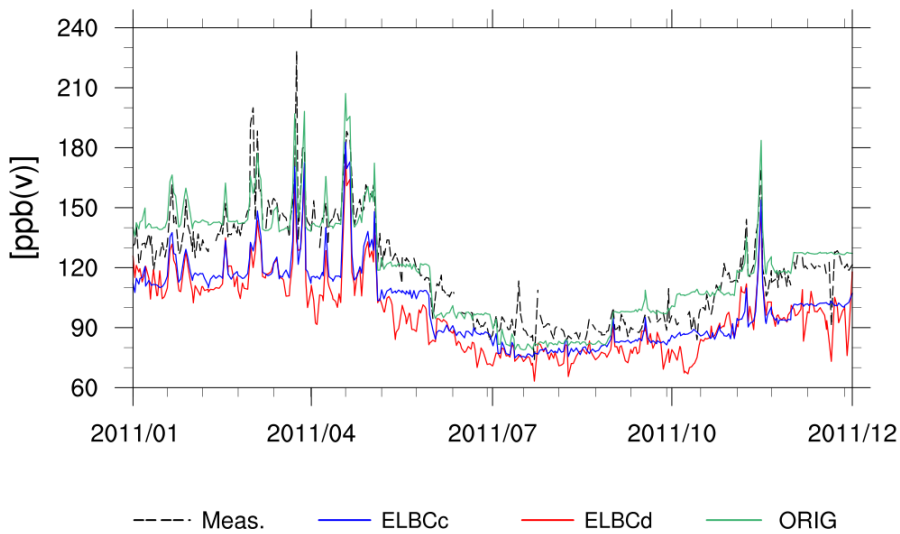


Figure 10. Timeseries showing the summer season of 2011 for CO, at the Mace Head station.

for O₃, 0.77 (ELBCd), 0.78 (ELBCc) and 0.66 (ORIG). The winter time O₃ is also much improved with the new ELBCs.

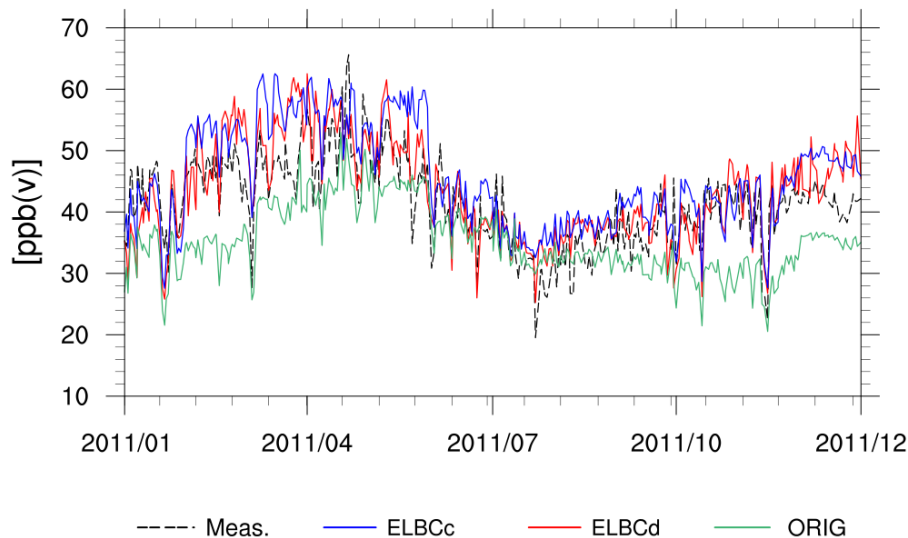


Figure 11. Same as Fig. 10, but for O_3 .

We have also investigated changes in a rather sensitive metric, the Accumulated Ozone over
 385 Threshold 40 ppb, AOT40 (Fuhrer et al., 1997). AOT40 is an important metric when studying ozone
 impact on vegetation (Fuhrer et al., 1997), it is also very sensitive to small variations in O_3 (Simpson
 et al., 2006a), and can thus highlight the differences among the different model runs. The AOT40
 is derived for the months April to September of 2011 and at 07:00–19:00 UTC. Figure 12 shows
 the AOT40 for all the considered measurement stations in the model domain. Clearly the use of
 390 ELBC runs cause significant changes in the AOT40. In most cases this gives a better comparison
 with measurements, although it should be noted that this alone is not proof of better BCs: many
 other processes also affect the bias with respect to AOT40, such as dry deposition rates or chemical
 production rates (Tuovinen et al., 2007). The one station that deviates more from this improvement,
 is Mace Head, where the ORIG BCs give best results. The reason for this is most likely the use of
 395 Mace Head data in setting the values used in the ORIG BCs. The dynamic boundary conditions,
 ELBCd, also yield a better agreement with the observations than the climatological boundary con-
 ditions, ELBCc, at six of the nine stations. However, the ELBCc and ELBCd give rather similar
 AOT40 levels, suggesting that climatological ELBCs can be good enough even for this rather sensi-
 tive ozone metric. On average, the ORIG results underestimate the AOT40 by 41 % and new ELBC
 400 runs overestimates by 10 and 29 % respectively. Sensitivity tests show that (as expected) AOT40 is
 most sensitive to the O_3 BCs, and this is also consistent with the findings in Schulz et al. (2014),
 who compared the global EMEP model to the regional EMEP MSC-W model and ground based
 observations, and where the global EMEP model overestimates the amount of O_3 at the surface.

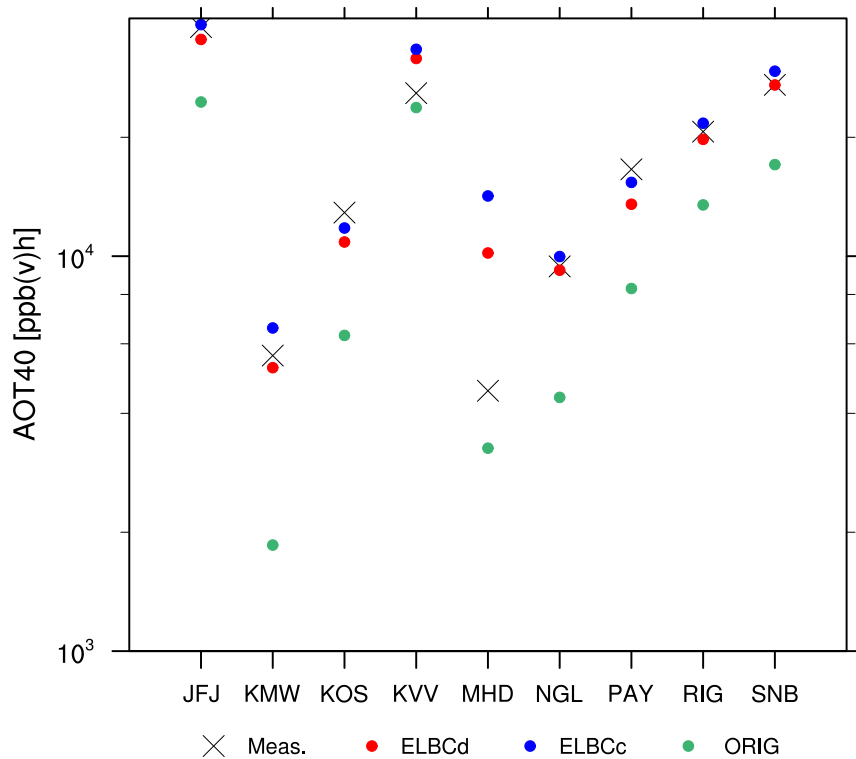


Figure 12. The AOT40 in ppb(v)h for the different in-domain ground based measurements stations and the different LBC setups. The AOT40 is derived for a corresponding growing season in 2011, representing the months of April to September and at 07:00–19:00 UTC.

3.3 Evaluation of MATCH results at 500 hPa

405 The question we address here is how the LBCs influence the in-domain concentrations aloft in the troposphere at 500 hPa. To get a general view of how MATCH performs in the free troposphere, the mean vertical profiles for CO and O₃ are inspected. Figure 13 shows mean vertical profiles for CO and O₃ and the three MATCH runs together with the EMEP model at MATCH η levels (surface to about 13 hPa). The profiles are averaged over 2006–2012, at the Mace Head station, which again is
 410 used since it is located close to the Western boundary. The two ELBC runs and the EMEP results have similar vertical profiles, while the MATCH results obtained with the original prescribed boundary values display a much weaker vertical variation. Judging by the satellite retrievals in Figs. 2 and 4, the vertical variation obtained with the EMEP model and with MATCH using the new boundary conditions are qualitatively more realistic than the corresponding results computed with the original
 415 boundary values, especially higher up in the free troposphere, where the difference between EMEP and the satellite retrievals are smaller. Compared with the long term average of measurements (2006–2012) at the Mace Head station (represented by the black triangle), there seems to be a rather large

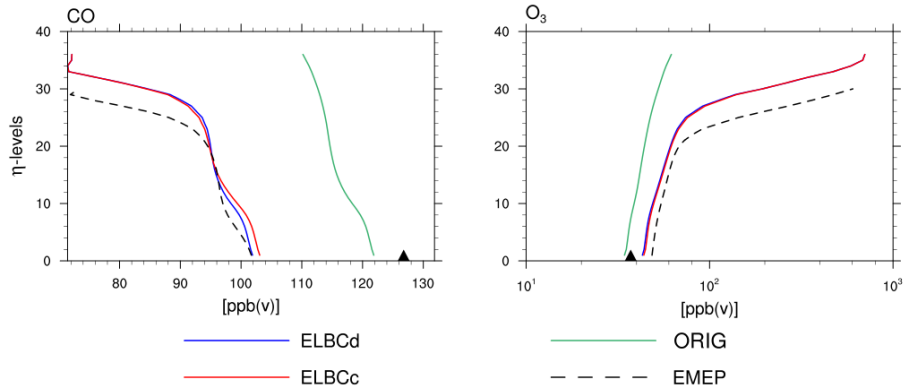


Figure 13. The seven year average vertical profiles at the Mace Head station location for CO (to the left) and O_3 (to the right), for the MATCH results and EMEP. The average ground based measurements at the Mace Head station is also shown as a black triangle. The levels correspond to η levels which varies with surface and model top pressure at each grid point and the pressure level 500 hPa approximately corresponds η level no. 18.

bias for CO close to the surface, with an underestimation of about 20 % for the ELBC runs, and about 4 % for the ORIG run. As stated earlier in the comparison near the surface, many models have
 420 problems with underestimating the amounts of CO.

As for O_3 , the new ELBC runs seem to produce too much near-surface ozone compared to the ground observations, while the ORIG run produces too little, as stated in the previous section. For this long-term mean, the ELBC runs have a positive bias of about 15 % and the ORIG a negative bias of about -9 %.

425 In order to gauge the significance of the differences in ozone concentrations aloft obtained with the different LBCs, we take a look at how these ozone profiles translate into radiative forcing rates. To this end, we run a 1-dimensional radiative transfer model. We use a standard US atmosphere (Anderson et al., 1986), in which we replace the tropospheric ozone concentrations up to an altitude of
 430 spectrally constant albedo of 7 %, and we perform the computations for a solar zenith angle of 50° (which is typical for Mace Head around noon at equinox). We use the radiative transfer tool uvspec (Kylling et al., 1998), which is included in libRadtran, where we use DISORT (Stamnes et al., 1988) with six streams as a radiative transfer solver in conjunction with Kato’s correlated k band model (Kato et al., 1999). The radiative fluxes are computed over the spectral range from 250 nm– $4.5 \mu\text{m}$. Not
 435 surprisingly, the “ELBCd” and “ELBCc” cases yield forcing rates that agree to within 99 % throughout the atmospheric column. The ELBC ozone profiles yield a radiative forcing rate of -1.8 W m^{-2} at the surface, and $+0.7 \text{ W m}^{-2}$ well above the troposphere at 18 km altitude. By contrast the ozone profile obtained with the MATCH run based on the original LBCs yields a radiative forcing of only -1.1 W m^{-2} at the surface, and $+0.4 \text{ W m}^{-2}$ at 18 km. Thus the magnitude of the radiative forcing

440 of tropospheric ozone computed with the original LBCs is considerably lower than that computed
with the EMEP-based LBCs.

This example clearly illustrates the impact of LBCs and concentration fields aloft on the climate
forcing effect of tropospheric ozone. Thus we take a closer look at the MATCH results at 500 hPa
obtained with different LBCs, and compare the simulations to independent satellite observations
445 from AIRS. In this comparison we do not smooth the data, according to Eq. (1) as in Sect. 3.1.
There are primarily two reasons as to why we did not smooth the model data. First, smoothing a data
set increases the reliability of the vertical distribution, but we are only interested in one particular
pressure level. Second, the chosen 500 hPa level is the level at which the satellite retrievals are least
dependent upon the a-priori. Thus the a priori has very little impact on the retrieval result at that level.
450 In addition, we are more interested in investigating the pattern correlations than the bias (which is
more affected by the smoothing error). Also, it is noted that AIRS, in general, has a high sensitivity
in the mid-troposphere at around 500 hPa (Warner et al., 2010). During the winter half year, when
the surface temperatures are very cold over the study area and the lower troposphere is likely to be
stratified due to inversions, the thermal contrast between the surface and successive layers in the
455 troposphere is weakest (especially under the presence of near isothermal vertical structure). In such
case, the maximum information content and averaging kernels peak around 500 hPa (Warner et al.,
2010). This means that even in winter AIRS is most sensitive in the mid-troposphere.

Figures 14 and 15 show the three MATCH runs (ELBCd, ELBCc and ORIG) together with AIRS
data at 500 hPa, for CO and O₃ respectively, averaged over 2006–2012. The new ELBC runs clearly
460 impact the MATCH results. In comparison to AIRS, the CO results shows a clear improvement in
the pattern correlation, from 0.71 (ORIG) to 0.85 (ELBC runs); also, the north-south gradient in the
ELBC results are stronger than in the ORIG results, and compares better to the north–south gradient
in the AIRS retrievals. The ELBC runs do not deviate much from each other, much due to the long
averaging period. Looking at the time averaged variance over the model domain, the ORIG run has
465 three times larger variance than AIRS, whereas the ELBCs has about the same.

The O₃ results, in Fig. 15, also show an improvement in the north-south gradient and the pattern
correlation, 0.70 (ORIG) to 0.78 (ELBC runs). Looking at the time correlation averaged over the
2-D-domain, the best correlation is found with a lag of one to three months, meaning the ORIG run
lags about a month and the ELBCs lags three months behind the AIRS data. This is an important
470 observation, highlighting the need for further investigations of how the MATCH model and other
models are performing in the free troposphere in order to be able to couple chemical transport models
with climate models.

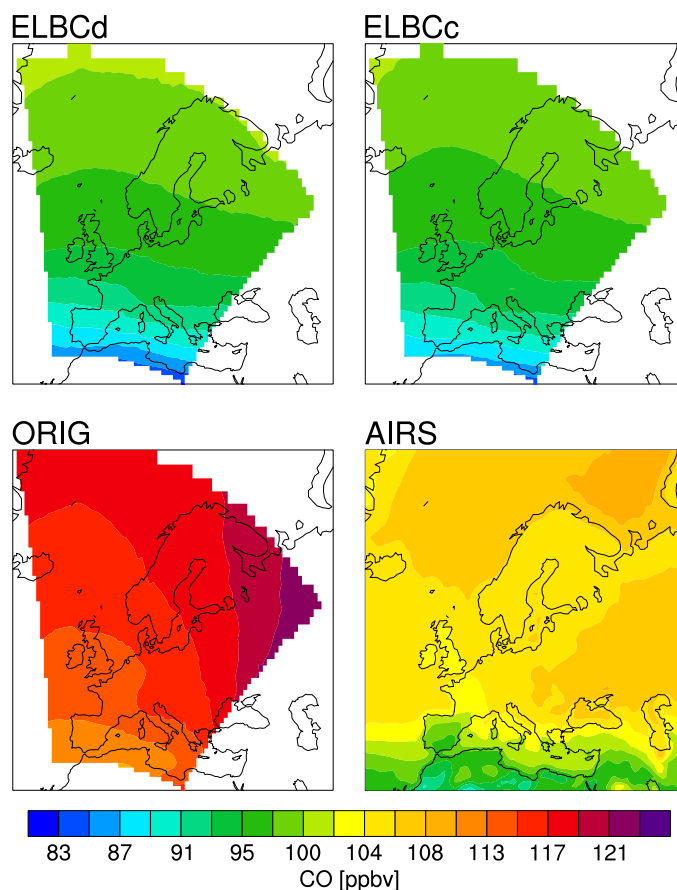


Figure 14. CO volume mixing ratios at 500 hPa for the ELBCd (top left), ELBCc (top right), ORIG (lower left) and the AIRS (lower right).

4 Conclusions

The main goal of this study was to test a methodology for evaluating lateral boundary conditions (LBCs) for the two long-lived atmospheric species CO and O₃. The methodology is based on a combined approach of performing (i) a direct comparison of LBCs derived from a global model with satellite observations at the domain boundaries, (ii) an in-domain comparison of a regional model run with satellite retrievals aloft, and (iii) an in-domain comparison of regional model runs with in situ observations at the ground. Thus our methodology combines the direct evaluation approach discussed in Henderson et al. (2014) with indirect testing methods used in various studies (e.g. Tang et al. (2007)). Boundary fields generated from the global EMEP model have, to our knowledge, not been validated previously by use of satellite data.

The direct evaluation with the global EMEP model shows good agreement, well within the uncertainties of the satellite retrievals. However, it is important to stress that the satellite data sets are

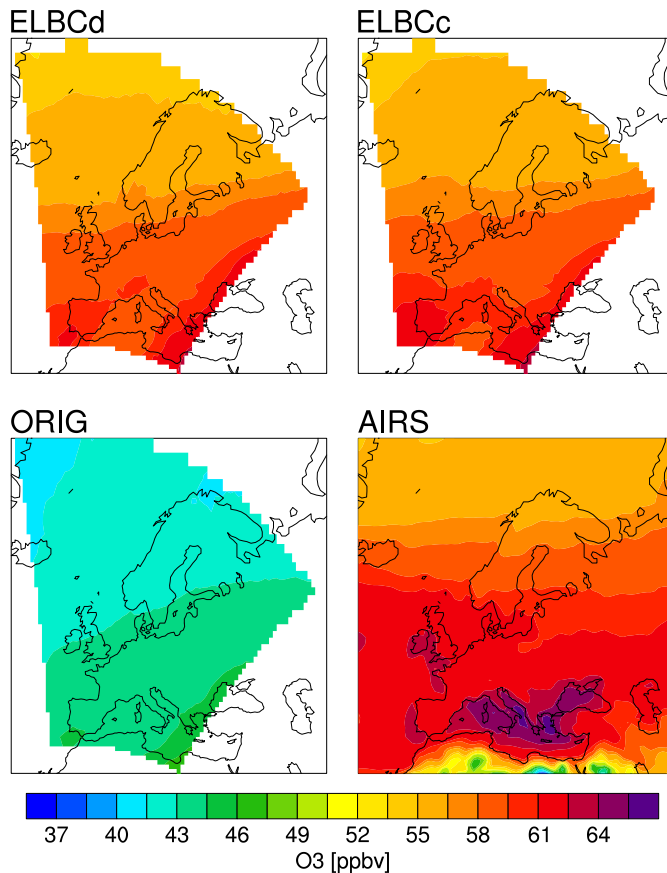


Figure 15. Same as Fig. 14, but for O₃.

485 retrieved with several assumptions, and they each have specific limitations, MOPITT has a lower sensitivity in the lower troposphere due to lower thermal contrasts between the surface-skin temperature and the surface-level air temperature, which leads to higher sensitivity on land, in daytime and at midlatitudes (Deeter et al., 2007). OMI has known biases, especially in the troposphere, where there are uncertainties, not only in distinguishing the tropospheric column from the stratospheric, 490 but also how ozone is distributed in the troposphere, Kroon et al. (2011).

To illustrate the impact of the lateral boundary fields, we forced the MATCH regional CTM, set up over the European domain, with boundary fields obtained from the global EMEP model. This was done by using (a) dynamic boundary fields, and (b) “climatological” boundary fields obtained by averaging, for each month, EMEP results from a seven-year model run. The performance of the 495 MATCH model aloft at 500 hPa is substantially improved with the use of the new ELBCs, where the pattern correlations increases from 0.68 (ORIG) to 0.83 (ELBC runs) for CO, and from 0.73 (ORIG) to 0.81 (ELBC runs), for O₃. Using AIRS as a reference, the model goes from a 12 % overestimation to a 9 % underestimation for CO and an underestimation of 28 % to a small overestimation of 3 %

for O₃. Note, however that the bias is not considered a strong metric in this comparison at 500 hPa,
500 since we have not smoothed the model data.

At the surface, it was less straight forward to draw general conclusions from the direct comparison
with the ground based measurements. The most significant improvements in temporal correlations
are observed at Mace Head, for the ELBCd run. This station lies closest to the Western boundary;
therefore it is more strongly influenced by the LBCs and less strongly by in-domain local sources.
505 The improvements in temporal correlation are more pronounced when focusing on shorter time
periods (e.g. summer season). This is consistent with Tang et al. (2007). Comparing the AOT40
results between the ELBC runs, the dynamical ELBCd setup of the LBCs produces, in general,
amounts of O₃ closer to the measurements. This difference in performance between the ELBC runs
can become important when studying air quality and health impacts on shorter time scales, but if
510 investigating the climate and its changes, a climatology can well represent the average amount of
long lived trace gases. In general the new ELBCs caused significant changes to the AOT40, where
the new ELBCs gives results closer to the measurements.

The use of a global CTM as LBCs in regional modelling certainly impacts the longer lived trace
gases both at the surface and aloft, in the free troposphere. It confirms that LBCs evaluated by satel-
515 lite observations at the boundary can be expected to provide accurate results in the free troposphere;
however, they also reveal the limitations of the methodology for ensuring the accuracy of boundary-
layer concentrations. This indicates that the significance of LBCs on ground concentration may have
been overestimated in previous studies. Even though we consider long-lived species, we find that
the LBCs influence ground concentrations only at locations in close proximity to the inflow do-
520 main. This makes it clear that it is not sufficient to limit the evaluation to using satellite data, and it
underlines the critical importance of monitoring ground concentrations near the inflow boundary.

All the datasets used in this evaluation of the LBCs, the EMEP, MOPITT and OMI data are
available upon request contacting the second author.

Acknowledgements. E. Andersson acknowledges Johan de Haan at KNMI for helping with the processing of
525 the OMO3PR dataset, the GAW network and the corresponding contacts for each used station (<http://ds.data.jma.go.jp/gmd/wdcgg/wdcgg.html>), the data center NASA's REVERB website for providing free data from the
satellite sensors OMI, MOPITT and AIRS, and funding from the Swedish National Space Board within the
OSCES project (No. 101/13). M. Kahnert has been funded by the Swedish Research Council (Vetenskapsrådet)
within the AGES project (project 621-2011-3346). D. Simpson, EMEP, is acknowledged for provision of the
530 EMEP MSC-W model data, and for valuable discussions.

References

- Amann, M., Bertok, I., Borcken-Kleefeld, J., Cofala, J., Heyes, C., Hoeglund-Isaksson, L., Klimont, Z., Nguyen, B., Posch, M., Rafaj, P., Sandler, R., Schoepp, W., Wagner, F., and Winiwarter, W.: Cost-effective control of air quality and greenhouse gases in Europe: modeling and policy applications, *Environ. Modell. Softw.*, 26, 1489–1501, doi:10.1016/j.envsoft.2011.07.012, 2011.
- 535 Anderson, G. P., Clough, S. A., Kneizys, F. X., Chetwynd, J. H., and Shettle, E. P.: AFGL Atmospheric Constituent Profiles (0–120 km), Tech. Rep. AFGL-TR-86-0110, AFGL (OPI), Hanscom AFB, Massachusetts 01736, 1986.
- Andersson, C., Langner, J., and Bergström, R.: Interannual variation and trends in air pollution over Europe due to climate variability during 1958–2001 simulated with a regional CTM coupled to the ERA40 reanalysis, *Tellus B*, 59, 77–98, 2006.
- 540 Andersson, C., Bergström, R., Bennet, C., Robertson, L., Thomas, M., Korhonen, H., Lehtinen, K. E. J., and Kokkola, H.: MATCH-SALSA – Multi-scale Atmospheric Transport and CHEMistry model coupled to the SALSA aerosol microphysics model – Part 1: Model description and evaluation, *Geosci. Model Dev.*, 8, 171–189, doi:10.5194/gmd-8-171-2015, 2015.
- 545 Angelbratt, J., Mellqvist, J., Simpson, D., Jonson, J. E., Blumenstock, T., Borsdorff, T., Duchatelet, P., Forster, F., Hase, F., Mahieu, E., De Mazière, M., Notholt, J., Petersen, A. K., Raffalski, U., Servais, C., Sussmann, R., Warneke, T., and Vigouroux, C.: Carbon monoxide (CO) and ethane (C₂H₆) trends from ground-based solar FTIR measurements at six European stations, comparison and sensitivity analysis with the EMEP model, *Atmos. Chem. Phys.*, 11, 9253–9269, doi:10.5194/acp-11-9253-2011, 2011.
- 550 Barna, M. G. and Knipping, E. M.: Insights from the BRAVO study on nesting global models to specify boundary conditions in regional air quality modeling simulations, *Atmos. Environ.*, 40, S574–S583, 2006.
- Bergström, R., Denier van der Gon, H. A. C., Prévôt, A. S. H., Yttri, K. E., and Simpson, D.: Modelling of organic aerosols over Europe (2002–2007) using a volatility basis set (VBS) framework: application of different assumptions regarding the formation of secondary organic aerosol, *Atmos. Chem. Phys.*, 12, 8499–8527, doi:10.5194/acp-12-8499-2012, 2012.
- Bhartia, P. K.: OMI Algorithm Theoretical Basis Document, Volume II, Ozone Products, NASA Goddard Space Center Greenbelt, Maryland, USA, 2002.
- Chahine, M. T., Pagano, T. S., Aumann, H. H., Atlas, R., Barnett, C., Blaisdell, J., Chen, L., Divakarla, M., Fetzer, E. J., Goldberg, M., Gautier, C., Granger, S., Hannon, S., Irion, F. W., Kakar, R., Kalnay, E., Lambrigtsen, B. H., Lee, S., Le Marshall, J., W., M. W., McMillin, L., Olsen, E. T., Revercomb, H., Rosenkranz, P., Smith, W. L., Staelin, D., Strow, L. L., Susskind, J., Tobin, D., Wolf, W., and Zhou, L.: AIRS: improving weather forecasting and providing new data on greenhouse gases, *B. Am. Meteorol. Soc.*, 87, 911–926, 2006.
- 560 Deeter, M.: MOPITT (Measurement of Pollution in the Troposphere) Validated Version 4 Product User’s Guide, National Centre for Atmospheric Research, Boulder, CO 80307, 2009.
- Deeter, M.: MOPITT (Measurement of Pollution in the Troposphere) Version 6 Product User’s Guide, National Centre for Atmospheric Research, Boulder, CO 80307, 2013.
- Deeter, M., Emmons, L., Francis, G., Edwards, D., Gille, J., Warner, J., Khattatov, B., Ziskin, D., Lamarque, J.-F., Ho, S.-P., Yudin, V., Attie, J.-L., Packman, D., Chen, J., Mao, D., and Drummond, J. R.: Operational

- 570 carbon monoxide retrieval algorithm and selected results for the MOPITT instrument, *J. Geophys. Res.*, 108, ACH1.1–ACH1.11, 2003.
- Deeter, M. N., Edwards, D. P., Gille, J. C., and Drummond, J. R.: Sensitivity of MOPITT observations to carbon monoxide in the lower troposphere, *J. Geophys. Res.*, 112, D24, doi:10.1029/2007JD008929, 2007.
- Deeter, M. N., Worden, H. M., Edwards, D. P., Gille, J. C., and Andrews, A. E.: Evaluation of MOPITT
575 retrievals of lower-tropospheric carbon monoxide over the United States, *J. Geophys. Res.*, 117, D13, doi:10.1029/2012JD017553, 2012.
- Devasthale, A. and Thomas, M. A.: An investigation of statistical link between inversion strength and carbon monoxide over Scandinavia in winter using AIRS data, *Atmos. Environ.*, 56, 109–114, doi:10.1016/j.atmosenv.2012.03.042, 2012.
- 580 Divakarla, M.: Evaluation of Atmospheric Infrared Sounder ozone profiles and total ozone retrievals with matched ozonesonde measurements, ECMWF ozone data, and Ozone Monitoring Instrument retrievals, *J. Geophys. Res.*, 113, D15, doi:10.1029/2007JD009317, 2008.
- Fagerli H. and Schulz M. and Gauss M. and Tsyro S. and Jonson J.E. and Benedictow A. and Simpson D. and Valdebenito Á. and Griesfeller J. and Semeena V. S. and Wind P. and Olivie D. and Aas W. and Hamburger T.
585 and Hjellbrekke A.-G. and Solberg S. and Tørseth K. and Yttri K. E. and Karl M. and Mareckova K. and Wankmüller R. and Alastuey A. and Posch M. and Tuovinen J.-P.: Transboundary particulate matter, photo-oxidants, acidifying and eutrophying components - EMEP Status Report 1/2014, Norwegian Meteorological Institut (MET.NO), ISSN 1504-6192, 2014
- Fagerli, H. and Aas, W.: Trends of nitrogen in air and precipitation: model results and observations at EMEP
590 sites in Europe, 1980–2003, *Environ. Pollut.*, 154, 448–461, 2008.
- Fetzer, E. J.: Preface to special section: Validation of Atmospheric Infrared Sounder Observations, *J. Geophys. Res.*, 111, D9, doi:10.1029/2005JD007020, 2006.
- Fiore, A. M., Jacob, D. J., Bey, I., Yantosca, R. M., Field, B. D., Fusco, A. C., and Wilkinson, J. G.: Background ozone over the United States in summer: origin, trend, and contribution to pollution episodes, *J. Geophys. Res.*, 107, ACH11.1–ACH11.25, 2002.
595
- Fiore, A. M., Dentener, F. J., Wild, O., Cuvelier, C., Schulz, M. G., Hess, P., Textor, C., Schulz, M., Doherty, R. M., Horowitz, L. W., MacKenzie, I. A., Sanderson, M. G., Shindell, D. T., Stevenson, D. S., Szopa, S., Dingenen, R. V., Zeng, R. V., Atherton, C., Bergmann, D., Bey, I., Carmichael, G., Collins, W. J., Duncan, B. N., Faluvegi, G., Folberth, G., Gauss, M., Gong, S., Hauglustaine, D., Holloway, T., Isaksen, I. S. A., Jacob, D. J., Jonson, J. E., Kaminski, J. W., Keating, T. J., Lupu, A., Marmer, E., Montanaro, V., Park, R. J., Pitari, G., Pringle, K. J., Pyle, J. A., Schroeder, S., Vivanco, M. G., Wind, P., Wojcik, G., Wu, S., and Zuber, A.: Multimodel estimates of intercontinental source-receptor relationships for ozone pollution, *J. Geophys. Res.*, 114, D4, doi:10.1029/2008JD010816, 2009.
600
- Fuhrer, J., Skärby, L., and Ashmore, M.: Critical levels for ozone effects on vegetation in Europe, *Environ. Pollut.*, 97, 91–106, 1997.
605
- Gidhagen, L., Engardt, M., Lövenheim, B., and Johansson, C.: Modeling effects of climate change on air quality and population exposure in urban planning scenarios, *Advances in Meteorology*, 12, 240894, doi:10.1155/2012/240894, 2012.

- Heald, C. L., Jacob, J., Fiore, A. M., Emmons, L. K., Gille, J. C., Deeter, M. N., Warner, J., Edwards, D. P.,
610 Crawford, J. H., Hamlin, A. J., Sachse, G. W., Browell, E. V., Avery, M. A., Vay, S. A., Westberg, D. J.,
Blake, D. R., Singh, H. B., Sandholm, S. T., Talbot, R. W., and Fuelberg, H. E.: Asian outflow and trans-
Pacific transport of carbon monoxide and ozone pollution: an integrated satellite, aircraft, and model per-
spective, *J. Geophys. Res.*, 108, D24, doi:10.1029/2003JD003507, 2003.
- Henderson, B. H., Akhtar, F., Pye, H. O. T., Napelenok, S. L., and Hutzell, W. T.: A database and tool for
615 boundary conditions for regional air quality modeling: description and evaluation, *Geosci. Model Dev.*, 7,
339–360, doi:10.5194/gmd-7-339-2014, 2014.
- Jiménez, P., Parra, R., and Baldasano, J. M.: Influence of initial and boundary conditions for ozone modeling
in very complex terrains: a case study in the northeastern Iberian Peninsula, *Environ. Modell. Softw.*, 22,
1294–1306, 2007.
- 620 Jonson, J. E., Simpson, D., Fagerli, H., and Solberg, S.: Can we explain the trends in European ozone levels?,
Atmos. Chem. Phys., 6, 51–66, doi:10.5194/acp-6-51-2006, 2006.
- Jonson, J. E., Stohl, A., Fiore, A. M., Hess, P., Szopa, S., Wild, O., Zeng, G., Dentener, F. J., Lupu, A.,
Schultz, M. G., Duncan, B. N., Sudo, K., Wind, P., Schulz, M., Marmer, E., Cuvelier, C., Keating, T., Zu-
ber, A., Valdebenito, A., Dorokhov, V., De Backer, H., Davies, J., Chen, G. H., Johnson, B., Tarasick, D. W.,
625 Stübi, R., Newchurch, M.J., von der Gathen, P., Steinbrecht, W., and Claude, H.: A multi-model analysis of
vertical ozone profiles, *Atmos. Chem. Phys.*, 10, 5759–5783, doi:10.5194/acp-10-5759-2010, 2010.
- Kahnert, M.: Variational data analysis of aerosol species in a regional CTM: background error covariance
constraint and aerosol optical observation operators, *Tellus B*, 60, 753–770, 2008.
- Kahnert, M.: On the observability of chemical and physical aerosol properties by optical observations: Inverse
630 modelling with variational data assimilation, *Tellus B*, 61, 747–755, 2009.
- Karl, M., Castell, N., Simpson, D., Solberg, S., Starrfelt, J., Svendby, T., Walker, S.-E., and Wright, R. F.:
Uncertainties in assessing the environmental impact of amine emissions from a CO₂ capture plant, *Atmos.*
Chem. Phys., 14, 8533–8557, doi:10.5194/acp-14-8533-2014, 2014.
- Kato, S., Ackerman, T. P., Mather, J. H., and Clothiaux, E.: The k-distribution method and correlated-k approx-
635 imation for a shortwave radiative transfer model, *J. Quant. Spectrosc. Ra.*, 62, 109–121, 1999.
- Kokkola, H., Korhonen, H., Lehtinen, K. E. J., Makkonen, R., Asmi, A., Järvenoja, S., Anttila, T., Partanen, A.-
I., Kulmala, M., Järvinen, H., Laaksonen, A., and Kerminen, V.-M.: SALSA – a Sectional Aerosol module
for Large Scale Applications, *Atmos. Chem. Phys.*, 8, 2469–2483, doi:10.5194/acp-8-2469-2008, 2008.
- Kroon, M., de Haan, J. F., Veefkind, J. P., Froidevaux, L., Wang, R., Kivi, R., and Hakkarainen, J. J.: Vali-
640 dation of operational ozone profiles from the Ozone Monitoring Instrument, *J. Geophys. Res.*, 116, D18,
doi:10.1029/2010JD015100, 2011.
- Kylling, A., Bais, A. F., Blumthaler, M., Schreder, J., Zerefos, C. S., and Kosmidis, E.: The effect of aerosols on
solar UV irradiances during the photochemical activity and solar ultraviolet radiation campaign, *J. Geophys.*
Res., 103, 26051–26060, 1998.
- 645 Loibl, W., Winiwarter, W., Kopsca, A., and Zueger, J.: Estimaing the spatial distribution of ozone concentration
in complex terrain, *Atmos. Environ.*, 28, 2557–2566, 1994.

- Mathur, R.: Estimating the impact of the 2004 Alaskan forest fires on episodic particulate matter pollution over the eastern United States through assimilation of satellite-derived aerosol optical depths in a regional air quality model, *J. Geophys. Res.*, 113, D17, doi:10.1029/2007JD009767, 2008.
- 650 McMillan, W. W., Evans, K. D., Barnett, C. D., S., M. E., Sachse, G. W., and Diskin, G. S.: Validating the AIRS version 5 CO retrieval with DACOM in situ measurements during INTEX-A and -B, *IEEE T. Geosci. Remote*, 49, 2802–2813, 2011.
- Monks, S. A., Arnold, S. R., Emmons, L. K., Law, K. S., Turquety, S., Duncan, B. N., Flemming, J., Huijnen, V., Tilmes, S., Langner, J., Mao, J., Long, Y., Thomas, J. L., Steenrod, S. D., Raut, J. C., Wilson, C.,
 655 Chipperfield, M. P., Diskin, G. S., Weinheimer, A., Schlager, H., and Ancellet, G.: Multi-model study of chemical and physical controls on transport of anthropogenic and biomass burning pollution to the Arctic, *Atmos. Chem. Phys.*, 15, 3575–3603, doi:10.5194/acp-15-3575-2015, 2015.
- Näs A., Moldanová J., Lindskog A., Bergström R. and Langner J.: Identification and management of critical environmental impacts from air transportation over North Europe EIATNE., EU-LIFE, Swedish Civil Aviation
 660 Administration, LIFE99 ENV/S/000631, 2003.
- Oltmans, S. J., Lefohn, A. S., Harris, J. M., Tarasick, D. W., Thompson, A. M., Wernli, H., Johnson, B. J., Novelli, P. C., Montzka, S. A., Ray, J. D., Patrick, L. C., Sweeney, C., Jefferson, A., Dann, T., Davies, J., Shapiro, M., and Holben, B. N.: Long-term changes in tropospheric ozone, *Atmos. Environ.*, 40, 3156–3173, 2006.
- 665 Pfister, G. G., Parrish, D. D., Worden, H., Emmons, L. K., Edwards, D. P., Wiedinmyer, C., Diskin, G. S., Huey, G., Oltmans, S. J., Thouret, V., Weinheimer, A., and Wisthaler, A.: Characterizing summertime chemical boundary conditions for air masses entering the US West Coast, *Atmos. Chem. Phys.*, 11, 1769–1790, doi:10.5194/acp-11-1769-2011, 2011.
- Pour-Biazar, A., McNider, R. T., Newchurch, M., Khan, M., Park, Y. H., and Wang, L.: Evaluation of NASA
 670 AURA's data products for use in air quality studies over the Gulf of Mexico, OCS Study BOEMRE 2010–051, US Dept. of the Interior, Bureau of Ocean Energy Management, Regulation and Enforcement, Gulf of Mexico OCS Region, Huntsville, Alabama 25805, 2010.
- Pour-Biazar, A., Khan, M., Wang, L., Park, Y.-H., Newchurch, M., McNider, R. T., Liu, X., Byun, D. W., and Cameron, R.: Utilization of satellite observations of ozone and aerosols in providing initial and boundary
 675 condition for regional air quality studies, *J. Geophys. Res.*, 116, D18, doi:10.1029/2010JD015200, 2011.
- Robertson, L., Langner, J., and Engardt, M.: An Eulerian limited-area atmospheric transport model, *J. Appl. Meteorol.*, 38, 190–210, 1999.
- Rodgers, C. D.: *Inverse Methods for Atmospheric Sounding – Theory and Practice*, World Scientific, Singapore, 2000.
- 680 Rudich, Y., Kaufman, Y. J., Dayan, U., Yu, H., and Kleidman, R. G.: Estimation of transboundary transport of pollution aerosols by remote sensing in the eastern Mediterranean, *J. Geophys. Res.*, 113, D14, doi:10.1029/2007JD009601, 2008.
- Sanderson, M., Dentener, F., Fiore, A., Cuvelier, K., Keating, T., Zuber, A., Atherton, C., Bergmann, D., Diehl, T., Doherty, R., Duncan, B., Hess, P., Horowitz, L., Jacob, D., Jonson, J., Kaminski, J., Lupu, A.,
 685 Mackenzie, I., Mancini, E., Marmer, E., Park, R., Pitari, G., Prather, M., Pringle, K., Schroeder, S.,

- Schultz, M., Shindell, D., Szopa, S., Wild, O., and Wind, P.: A multi-model study of the hemispheric transport and deposition of oxidised nitrogen, *Geophys. Res. Lett.*, 35, L17815, doi:10.1029/2008GL035389, 2008.
- Schulz, M., Jonson, J. E., Fagerli, H., and Valiyaveetil, S.: ANNEX I – Upgrade of the model framework, Tech. rep., The Norwegian Meteorological Institute, Oslo, Norway, 2014.
- 690 Simpson, D.: The EMEP MSC-W modelling programme: its relationship to policy support, current challenges and future perspectives, in: *Air Pollution Modelling and its Application XXII*, edited by: Steyn, D., Builtjes, P., and Timmermans, R., 265–271, 2013.
- Simpson, D., Ashmore, M., Emberson, L., and Tuovinen, J.-P.: A comparison of two different approaches for mapping potential ozone damage to vegetation. A model study, *Environ. Pollut.*, 146, 715–725, 695 doi:10.1016/j.envpol.2006.04.013 2006.
- Simpson, D., Butterbach-Bahl, K., Fagerli, H., Kesik, M., Skiba, U., and Tang, S.: Deposition and emissions of reactive nitrogen over European forests: a modelling study, *Atmos. Environ.*, 40, 5712–5726, doi:10.1016/j.atmosenv.2006.04.063, 2006b.
- Simpson, D., Benedictow, A., Berge, H., Bergström, R., Emberson, L. D., Fagerli, H., Flechard, C. R., Hayman, G. D., Gauss, M., Jonson, J. E., Jenkin, M. E., Nyíri, A., Richter, C., Semeena, V. S., Tsyro, S., 700 Tuovinen, J.-P., Valdebenito, Á., and Wind, P.: The EMEP MSC-W chemical transport model – technical description, *Atmos. Chem. Phys.*, 12, 7825–7865, doi:10.5194/acp-12-7825-2012, 2012.
- Simpson, D., Schulz, M., Shamsudheen, V., Tsyro, S., Valdebenito, A., Wind, P., and Steensen, B. M.: EMEP model development and performance changes, in: *Transboundary acidification, eutrophication and ground level ozone in Europe in 2011*, EMEP Status Report 1/2013, the Norwegian Meteorological Institute, Oslo, 705 Norway, 45–59, 2013.
- Solberg S., Bergström R., Langner J., Laurila T., Lindskog A.: Changes in Nordic surface ozone episodes due to European emission reductions in the 1990s, *Atmos. Env.*, 39, 179–192, doi:10.1016/j.atmosenv.2004.08.049, 2005.
- 710 Song, C.-K., Byun, D. W., Pierce, R. B., Alsaadi, J. A., Schaack, T. K., and Vukovich, F.: Downscale linkage of global model output for regional chemical transport modeling: method and general performance, *J. Geophys. Res.*, 113, D8, doi:10.1029/2007JD008951, 2008.
- Stamnes, K., Tsay, S.-C., Wiscombe, W., and Jayaweera, K.: Numerically stable algorithm for discrete-ordinate-method radiative transfer in multiple scattering and emitting layered media, *Appl. Optics*, 27, 2502–2509, 715 1988.
- Stein, O., Schultz, M. G., Bouarar, I., Clark, H., Huijnen, V., Gaudel, A., George, M., and Clerbaux, C.: On the wintertime low bias of Northern Hemisphere carbon monoxide found in global model simulations, *Atmos. Chem. Phys.*, 14, 9295–9316, doi:10.5194/acp-14-9295-2014, 2014.
- Tang, Y., Carmichael, G. R., Thongboonchoo, N., Chai, T., Horowitz, L. W., Pierce, R. B., Al-Saadi, J. A., 720 Pfister, G., Vukovich, J. M., Avery, M. A., Sachse, G. W., Ryerson, T. B., Holloway, J. S., Atlas, E. L., Flocke, F. M., Weber, R. J., Huey, L. G., Dibb, J. E., Streets, D. G., and Brune, W. H.: Influence of lateral and top boundary conditions on regional air quality prediction: a multiscale study coupling regional and global chemical transport models, *J. Geophys. Res.*, 112, D10, doi:10.1029/2006JD007515, 2007.
- Tang, Y., Lee, P., Tsidulko, M., Huang, H.-C., McQueen, J. T., DiMego, G. J., Emmons, L. K., Pierce, R. B., 725 Thompson, A. M., Lin, H.-M., Kang, D., Tong, D., Yu, S., Mathur, R., Pleim, J. E., Otte, T. L., Pouliot, G.,

- Young, J. O., Schere, K. L., Davidson, P. M., and Stajner, I.: The impact of chemical lateral boundary conditions on CMAQ predictions of tropospheric ozone over the continental United States, *Environ. Fluid Mech.*, 9, 43–58, 2009.
- Taylor, K. E.: Summarizing multiple aspects of model performance in a single diagram, *J. Geophys. Res.*, 106, 7183–7192, 2001.
- 730 AIRS Science Team/Teixeira J. (2013): Aqua AIRS Level 3 Monthly Standard Physical Retrieval (AIRS+AMSU), Greenbelt, MD, USA:NASA Goddard Earth Science Data and Information Services Center (GES DISC), January 2015, doi:<http://dx.doi.org/10.5067/AQUA/AIRS/DATA31910.5067/AQUA/AIRS/DATA319>.
- 735 Thomas, M. A. and Devasthale, A.: Sensitivity of free tropospheric carbon monoxide to atmospheric weather states and their persistency: an observational assessment over the Nordic countries, *Atmos. Chem. Phys.*, 14, 11545–11555, doi:10.5194/acp-14-11545-2014, 2014.
- Thomas, M. A., Kahnert, M., Andersson, C., Kokkola, H., Hansson, U., Jones, C., Langner, J., and Devasthale, A.: Integration of prognostic aerosol–cloud interactions in a chemistry transport model coupled offline to a regional climate model, *Geosci. Model Dev.*, 8, 1885–1898, doi:10.5194/gmd-8-1885-2015, 2015.
- 740 Tian, B.: AIRS-V6L3UG: AIRS Version 6 Level 3 data user guide, July 2015, http://disc.sci.gsfc.nasa.gov/AIRS/documentation/v6_docs/v6releasedocs-1/V6_L3_User_Guide.pdf, 2013.
- Tsyro, S., Karl, M., Simpson, D., Valdebenito, A., and Wind, P.: Updates to the EMEP/MSC-W model, in: *Transboundary Particulate Matter, Photo-Oxidants, Acidifying and Eutrophying Components, Status Report 1/2014*, the Norwegian Meteorological Institute, Oslo, Norway, 143–146, 2014.
- 745 Tuovinen, J.-P., Simpson, D., Emberson, L., Ashmore, M., and Gerosa, G.: Robustness of modelled ozone exposures and doses, *Environ. Pollut.*, 146, 578–586, 2007.
- Undén, P., Rontu, L., Järvinen, H., Lynch, P., Calvo, J., Cats, G., Cuxart, J., Eerola, K., Fortelius, C., Garcia-Moya, J. A., Jones, C., Lenderlink, G., McDonald, A., McGrath, R., Navascues, B., Nielsen, N. W., Ødegaard, V., Rodriguez, E., Rummukainen, M., Rööm, R., Sattler, K., Sass, B. H., Savijärvi, H., Schreur, B. W., Sigg, R., The, H., and Tijn, A.: HIRLAM-5 Scientific Documentation, July 2015, <http://www.hirlam.org>, 2002.
- 750 Vieno, M., Dore, A. J., Stevenson, D. S., Doherty, R., Heal, M. R., Reis, S., Hallsworth, S., Tarrason, L., Wind, P., Fowler, D., Simpson, D., and Sutton, M. A.: Modelling surface ozone during the 2003 heat-wave in the UK, *Atmos. Chem. Phys.*, 10, 7963–7978, doi:10.5194/acp-10-7963-2010, 2010.
- Warner, J., Carminati, F., Wei, Z., Lahoz, W., and Attié, J.-L.: Tropospheric carbon monoxide variability from AIRS under clear and cloudy conditions, *Atmos. Chem. Phys.*, 13, 12469–12479, doi:10.5194/acp-13-12469-2013, 2013.
- 760 Warner, J. X., Wei, Z., Strow, L. L., Barnet, C. D., Sparling, L. C., Diskin, G., and Sachse, G.: Improved agreement of AIRS tropospheric carbon monoxide products with other EOS sensors using optimal estimation retrievals, *Atmos. Chem. Phys.*, 10, 9521–9533, doi:10.5194/acp-10-9521-2010, 2010.
- Xiong, X., Barnet, C., Maddy, E., Sweeney, C., Liu, X., Zhou, L., and Goldberg, M.: Characterization and validation of methane products from the Atmospheric Infrared Sounder (AIRS), *J. Geophys. Res.*, 113, G3, doi:10.1029/2007JG000500, 2008.

765 Zhang, L., Jacob, D. J., Boersma, K. F., Jaffe, D. A., Olson, J. R., Bowman, K. W., Worden, J. R., Thomp-
son, A. M., Avery, M. A., Cohen, R. C., Dibb, J. E., Flock, F. M., Fuelberg, H. E., Huey, L. G., McMil-
lan, W. W., Singh, H. B., and Weinheimer, A. J.: Transpacific transport of ozone pollution and the effect of
recent Asian emission increases on air quality in North America: an integrated analysis using satellite, air-
craft, ozonesonde, and surface observations, *Atmos. Chem. Phys.*, 8, 6117–6136, doi:10.5194/acp-8-6117-
770 2008, 2008.