

Dear reviewer #1,

we thank you for your comments on our manuscript. The ICON-ART code has been made available for you upon request. Please contact the editor if you want to take a look at the code. Below we present our answers (black color) to your comments (grey color) accompanied by the changes we performed in the manuscript (blue color).

- 1) It would be nice if the authors explain in a bit more detail the reasons why a icosahedral approach was chosen to start with: what are its advantages in terms of computational cost/grid nesting or other?

During the last decade, there is an obvious trend away from traditional latitude-longitude grids and series expansion methods, mainly because of their need for extensive global communication. Global models based on latitude-longitude grids suffer from the so called 'polar problem' because the meridians converge towards the poles. To maintain numerical stability near the poles, polar filters involving global communication are needed. Moreover, reasonable time steps can only be achieved with (semi-)Lagrangian algorithms, which do not allow for exact mass conservation and tracer mass consistency. On the other hand, global series expansion/spectral transform methods involve Fourier and Legendre transforms every time step, which also require massive global communication and have a numerical complexity increasing more than quadratically with the number of resolved wavelengths. In view of the required scalability on today's and future massively parallel computing architectures, we decided to choose an icosahedral approach. Icosahedral grids provide a quasi-uniform tessellation of the sphere as well as obvious ways for achieving local mass conservation and tracer-mass consistency, which are of great importance for aerosol-chemistry-models. The main challenge of icosahedral grids, however, is to control their spurious computational modes, which either show up in the mass field (triangular grid) or in the vorticity field (hexagonal grid). Details on the specific measures undertaken for ICON can be found in Zängl et. al (2014).

The decision to go with the icosahedral-triangular C grid rather than the icosahedral-hexagonal approach was mainly based on the fact that triangular grids provide a much more obvious way of implementing a hierarchical nesting-based mesh refinement.

- 2) The authors describe all of the components of the atmospheric composition model, including some that are probably common with the meteorological model (I think of turbulent diffusion). A few physical processes were not included in this global description: microphysics, radiation and surface-atmosphere interface come to mind. It would be appreciated if the authors could rapidly introduce how these processes are taken into account in ICON-ART. As one of the stated objectives of ICON-ART is to model cloud and radiation interaction with aerosols, the microphysical and radiation parameterizations must be two critical components of the system, even though they don't formally belong to the "ART" part of ICON-ART.

We mentioned turbulent diffusion (and also convection) parameterization because these have a direct impact on the spatiotemporal evolution of aerosol and trace gas concentrations.

We agree that the coupling of aerosols to cloud and radiation parameterizations will be a crucial component of the full ICON-ART system. The objectives the reviewer refers to apply

to the final stage of ICON-ART development as stated in the manuscript. In the model version described in the manuscript, the coupling of ICON and ART is realized only in one direction. This means that our aerosol and gaseous tracers do not have a feedback on the atmospheric state so far.

Our plan is to couple the two-moment microphysic scheme by Seifert and Beheng (2006), which is a (non-operational) part of ICON, with parameterizations for the activation of aerosol particles (Fountoukis and Nenes, 2005) and a cirrus cloud formation scheme (Barahona and Nenes, 2009). For the interaction of aerosol with radiation, we plan to replace the aerosol optical depth (AOD) climatology that is used in the radiation scheme by an AOD that is calculated based on simulated aerosol distributions.

For the gaseous tracers the simplified lifetime approach will be supplemented by a full chemistry scheme for the troposphere and stratosphere. Therein, the photolysis rates will be calculated online using Fast-Jx (Bian and Prather, 2002) and the gas phase reactions via the kpp software (Sandu and Sander, 2006).

We added a statement that the physical parameterization package we use so far is the same as for NWP applications:

[If not stated differently, physical parameterizations \(e.g. radiation, microphysics\) used for the simulations in this paper are the same as described in Zängl et al. \(2014\).](#)

Bibliography:

Barahona, D., and A. Nenes.: Parameterizing the competition between homogeneous and heterogeneous freezing in ice cloud formation—polydisperse ice nuclei. *Atmos. Chem. and Phys.* 9.16: 5933-5948, 2009.

Bian, H., and M. J. Prather: Fast-J2: Accurate Simulation of Stratospheric Photolysis in Global Chemical Models, *Journal of Atmospheric Chemistry*, 41: 281–296, 2002.

Fountoukis, C., and A. Nenes. Continued development of a cloud droplet formation parameterization for global climate models. *J. Geophys. Res.-Atmos.* (1984–2012) 110.D11, 2005.

Sandu, A., and R. Sander: Technical note: Simulating chemical systems in Fortran90 and Matlab with the Kinetic PreProcessor KPP-2.1, *Atmos. Chem. Phys.*, 6, 187–195, 2006.

Seifert, A., and K. D. Beheng.: A two-moment cloud microphysics parameterization for mixed-phase clouds. Part 1: Model description. *Meteorol. Atmos. Phys.* 92.1-2: 45-66, 2006.

Zängl, G., D. Reinert, P. Rípodas, and M. Baldauf: The ICON (ICOsahedral Non-hydrostatic) modelling framework of DWD and MPI-M: description of the non-hydrostatic dynamical core, *Q. J. Roy. Meteor. Soc.*, doi:10.1002/qj.2378, online first, 2014.

Dear reviewer #2,

we thank you for your comments on our manuscript. The ICON-ART code has been made available for you upon request. Please contact the editor if you want to take a look at the code. Below we present our answers (black color) to your comments (grey color) accompanied by the changes we performed in the manuscript (blue color).

- 1) Abstract, line 17/18: "The pattern of the simulated distribution of volcanic ash particles shows an agreement with previous studies". Why not "good agreement" as for Bromoform and Dibrommethane?

We adapted the wording for the volcanic ash:

The pattern of the simulated distribution of volcanic ash particles shows a good agreement with previous studies.

- 2) p. 572, line 1 – 6: It might be interesting to know the approximate horizontal and vertical resolution. It is mentioned later in the text (about 40 km horizontal, and on p. 592, line 10 in the context of the discussion concerning the volcanic ash plume, a vertical resolution of 300 m is In the description of the run for bromocarbons (p.589, line 6) a number of 90 levels up to 75 km altitude, time step of 72 s is given. It might be helpful to clarify this point of horizontal and vertical grid spacing with respect to the different model runs which have been performed.

The horizontal and vertical grid used for all examples presented in the manuscript is the same. We therefore relocated the statements that were previously within Section 6.1 to the introduction of Section 6.

The forcing of dynamics and transport in these simulations was done by parameterized processes of the NWP version of ICON and namelist parameters were set accordingly. A R2B06 grid (about 40 km horizontal grid spacing) with no nested domain has been chosen with 90 non-equidistant vertical levels up to 75 km together with a time step of 72 s. The vertical thickness of the lowest model layer is 20 m, the maximum thickness of about 2600 m is reached at the top of the model domain.

- 3) Is the vertical grid spacing varying with altitude or is it constant? What is the upper boundary?

The vertical grid spacing varies with altitude. We added 'non-equidistant vertical levels up to 75km' to the general setup description as stated at the beginning of Section 6.

A R2B06 grid (about 40 km horizontal grid spacing) with no nested domain has been chosen with 90 non-equidistant vertical levels up to 75 km together with a time step of 72 s.

- 4) The authors mention the problems with computing time, what is the computing time e.g. for an annual run as performed for sea salt ? Or for the other applications shown?

The example for the sea salt might not be the best example for a simple reason. As the goal was to obtain emission fluxes, we did not switch on advection. The VSLS simulations might give better insight. For the multi-month simulation of the very short-lived bromocarbons presented in chapter 6.1, 700 CPUh on 128 Intel Xeon processors E5-2670 (Sandy Bridge) with 2.6 GHz clock speed are needed to simulate the transport and simplified chemistry of in total 7 tracers for one month in a R02B06 resolution with 90 levels (in total 29491200 grid cells) and a time step of 72 s including a daily netcdf output on the native ICON as well as on a regular lat-lon grid with 0.5°x0.5° resolution.

In general, our tests showed that ART does not impact the scalability of the ICON model. Using 12 ART tracers for volcanic ash and sea salt aerosol lead to roughly a factor of 3 compared to an ICON simulation without ART. This test was performed with MPI parallelization only on different numbers of cores between 64 and 1024. We added a small passage concerning the scalability:

We performed tests with different numbers of cores (powers of two between 64 and 1024) and found roughly a factor of 3 for an ICON-ART simulation compared to an ICON simulation without ART. The ART simulation for this purpose was performed with volcanic ash and sea salt aerosol switched on. This shows that the scalability of ICON applies also to ICON-ART.

- 5) p. 586, line 11: The term VLSL is used before it is explained on p.588, line 6. Better to explain it with the first usage on page 586.

VLSL is now explained at the first usage.

- 6) p.591, line 21: "after some tuning ..." Is the "tuning" performed in some systematic way or just by trying several factors and then take some which is just leading to reasonable results? The phrase tuning might be misleading. Although this parameter can be used as a tuning parameter for future simulations, no adjusting of this parameter has been performed for this work. It was rather chosen based on literature values. We added a paragraph which describes the physical background of this parameter and why 0.04 was chosen:
The emission fluxes for the different size bins are calculated using Eq. (21). It is assumed that a significant fraction of the total emitted mass is deposited close to the source due to the gravitational settling of large particles, aggregation of small particles and organized downdrafts. Common values for the ash fraction available for long range transport lie between 1% and 10% (e.g. Witham et al. 2012). We chose an appropriate value of $f_{lrt} = 0.04$ in Eq. (21) which lies well in that range.

Bibliography:

Witham, C., H. Webster, M. Hort, A. Jones, and D. Thomson: Modelling concentrations of volcanic ash encountered by aircraft in past eruptions. *Atmos. Environ.*, 48, 219-229, 2012.

Dear reviewer #3,

we thank you for your comments on our manuscript. The ICON-ART code has been made available for you upon request. Please contact the editor if you want to take a look at the code. Below we present our answers (black color) to your comments (grey color) accompanied by the changes we performed in the manuscript (blue color).

Major comments:

- 1) I have concerns about the research contribution of the presented work. Both the ART model and the ICON model are described elsewhere. The equations presented in section 3, 4 and 5 are largely standard.

We disagree with the reviewer in that point. Moreover, we think that when describing a new model system it is absolutely necessary to give the reader access to the underlying equations. From our own experience we know how boring it is to search this basic information in consecutive, often even grey literature.

Furthermore, the following is stated on GMD website in the description of Model Description papers (http://www.geoscientific-model-development.net/submission/manuscript_types.html):

The main paper should describe both the underlying scientific basis and purpose of the model, and overview the numerical solutions employed.

- 2) The volcanic ash source function is new, but its presentation is not well-motivated. What was wrong with the old source function? This could be strengthened by comparing the new treatment to the old treatment and by quantifying the improvements (if any).

As there is no old version of the source function in ICON-ART there is nothing to compare with. The parameterization of the emission of volcanic ash is a crucial step in volcanic ash forecast. In case of ICON-ART we developed a parameterization based on recent findings that followed the Eyjafjallayökull eruption. The description of the vertical profile of the emissions is to our knowledge new.

- 3) I assume that this paper falls in the category of “Model Description paper” as described on the GMD website http://www.geoscientific-model-development.net/submission/manuscript_types.html. The paper falls short on several criteria listed here: Code availability and licensing: The text mentions that ART can be obtained from the Institute for Meteorology and Climate Research at KIT. What is the license (e.g. GPL, BSD, CC-NC)? What about the ICON part?

As this point was also raised by the executive editor, we refer to the answer we give there.

- 4) Verification and validation: The three application examples are examples at best. I’m sure that large amounts of work went into this part, but for a manuscript in the category “model description paper”, I would expect more comprehensive and rigorous V&V, using appropriate quantitative metrics. For example for the comparison with the ERA-Interim analysis, more than one particular day should be used, and the agreement/disagreement should be quantified with the usual error metrics. The authors may want to think about if they rather focus on one case study rather than doing three.

As the reviewer mentions our paper is a model description paper. In the description of this category at the GMD homepage it is stated that at this stage no validation of the results is

required. Moreover it is stressed that examples should be given showing the capabilities and the functionality of the model. For that reason we will stay with the three examples as presented because they document the capabilities of ICON-ART 1.0.

Minor comments:

- 5) It would be helpful to know the computational resources that are required to perform the simulation, especially if this could be compared to existing models. How does coupling of ART to ICON impact the scalability of the ICON model?

It is always difficult to compare computational resources of different models as this depends heavily on the machine where the computation was performed, the compiler setup (e.g. version or optimization level) and the chosen model setup. In general, ICON scales nearly perfect with an increasing number of cores and ART does not affect this behavior. E.g., using 12 ART tracers for volcanic ash and sea salt aerosol lead to roughly a factor of 3 compared to an ICON simulation without ART. This test was performed with MPI parallelization only on different numbers of cores between 64 and 1024. We added a small passage concerning the scalability:

We performed tests with different numbers of cores (powers of two between 64 and 1024) and found roughly a factor of 3 for an ICON-ART simulation compared to an ICON simulation without ART. The ART simulation for this purpose was performed with volcanic ash and sea salt aerosol switched on. This shows that the scalability of ICON applies also to ICON-ART.

- 6) Equation 10: There should be a factor of $\pi/6$ relating the third moment to the volume (and mass).

The formulation in the brackets (page 575, line 8-9) was misleading. The $\Psi_{3,i}$ in equation 10 is a mass mixing ratio as stated in the text above. The index 3 was chosen as mass mixing ratio is assumed to be proportional to third moment. We adapted the text in the brackets: (the indices 0 and 3 are chosen due to the proportionality to these moments of the distribution)

- 7) Table 3: Are these bin centers or bin edges?

These are bin centers. We modified the table heading to make this clear: The diameters of the size bin centers are denoted by d_i .

Typos:

- 8) I suggest avoiding the use of “get”, and use for example “obtain” instead. This occurs several times in the paper.

We identified the ‘get’ the reviewer is referring to and changed them to ‘obtained’:

- By this procedure we obtain a dimensionless vertical emission profile that is shown in Fig 1b.
- Based on these measurements we obtain distribution factors f_i given in Table 3.
- (...) where N_r is the total number concentration of rain droplets and ρ_w the density of water, we obtain (...)
- Assuming large particles $D_{p,i} > 1 \mu\text{m}$ and a constant representative rain drop size of $D_r = 5 \cdot 10^{-4} \text{ m}$ we obtain (...)
- For particles with a diameter below $15 \mu\text{m}$ we obtain (...).

- 9) p. 581, line 15: should be “a one-dimensional”

We corrected this:

The turbulent fluxes within ICON are treated by a one-dimensional prognostic TKE turbulence scheme (Raschendorfer, 2001).

10) p. 582, line 3: should be “In the cases of ...”

We corrected this:

In the cases of gases and particles this surface flux is determined by the dry deposition process.

11) p. 583, line 2: should be “size and terminal fall velocity are small”

We corrected the ‘is’ to ‘are’:

With the assumptions, that size and terminal fall velocity of aerosol particles are small compared to rain drops, (...)

12) p. 586: “Realisation”: do you mean numerical implementation?

We changed the section heading to ‘Numerical implementation’.

ICON-ART 1.0 – a new online-coupled model system from the global to regional scale

D. Rieger¹, M. Bangert¹, I. Bischoff-Gauss³, J. Förstner², K. Lundgren^{1,*}, D. Reinert², J. Schröter¹, H. Vogel¹, G. Zängl², R. Ruhnke¹, and B. Vogel¹

¹Institute for Meteorology and Climate Research, Karlsruhe Institute of Technology, Hermann-von-Helmholtz-Platz 1, 76344 Eggenstein-Leopoldshafen, Germany

²Deutscher Wetterdienst, Frankfurter Str. 135, 63067 Offenbach, Germany

³Steinbuch Centre for Computing, Karlsruhe Institute of Technology, Hermann-von-Helmholtz-Platz 1, 76344 Eggenstein-Leopoldshafen, Germany

*now at: Deutscher Wetterdienst, Frankfurter Str. 135, 63067 Offenbach, Germany

Correspondence to: D. Rieger (daniel.rieger@kit.edu)

Abstract

We present the first stage of a new online-coupled global to regional scale modelling framework for the simulation of the spatiotemporal evolution of aerosols and trace gases. The underlying meteorological model is the new nonhydrostatic model system ICON (ICOsahe-dral Nonhydrostatic) which allows a local grid refinement with two-way interactions between the grids. We develop the extension ART (Aerosol and Reactive Trace gases) with the goal to simulate interactions between trace substances and the state of the atmosphere. Within this paper, we present the basic equations and give an overview of the physical parameterizations as well as numerical methods we use.

First applications of the new model system for trace gases, monodisperse particles and polydisperse particles are shown. The simulated distribution of two very short-lived substances, Bromoform (CHBr_3) and Dibrommethane (CH_2Br_2) reflecting the fast upward transport shows a good agreement with observations and previous model studies. Also, the shape of the simulated tropical profiles is well reproduced. As an example for the treatment of monodisperse particles we present the simulated ash plume of the Eyjafjallajökull eruption in April 2010. Here, a novel approach for the source function is applied. The pattern of the simulated distribution of volcanic ash particles shows an a good agreement with previous studies. As an example for the treatment of a polydisperse aerosol, where number densities and mass concentrations are accounted for, we simulated the annual emissions of sea salt. We obtain a total emission flux of 26.0 Pg yr^{-1} and an emission flux of particles with diameter less than $10 \mu\text{m}$ of 7.36 Pg yr^{-1} .

1 Introduction

In recent years several global and regional scale model systems have been developed to take into account the feedback between natural and anthropogenic gaseous compounds and aerosol particles and the state of the atmosphere. At the beginning those model systems mainly covered the global scale in general using a hydrostatic framework. Recent

developments of those hydrostatic global chemistry-climate models take into account the dynamical and chemical coupling between troposphere and stratosphere and partly with the mesosphere. Examples of such model systems are ECHAM/HAMMOZ (Pozzoli et al., 2008a, b), EMAC (Roeckner et al., 2006; Jöckel et al., 2006, 2010), and WACCM (Kunz et al., 2011; Smith et al., 2011). In the meantime also regional scale online-coupled models systems exist (Baklanov et al., 2014). Those regional scale models are using a non-hydrostatic framework as this is required to resolve the relevant processes on this scale. Examples of such model systems are WRF/Chem (Chapman et al., 2009) and COSMO-ART (Vogel et al., 2009). Both model systems are based on meteorological models that are applied for operational weather forecast on time scales of a few days by national weather services.

Regional scale models need boundary conditions for the meteorological as well as chemical and aerosol variables. Most often these boundary conditions are taken from a global scale model. Here the problem arises that these model systems are inconsistent in model physics and the specification of air constituents and the chemistry involved. The global atmospheric model ICON (ICOsahedral Nonhydrostatic, Zängl et al., 2014) allows to overcome this inconsistency as it uses a nonhydrostatic framework already on the global scale and allows one-way and two way nesting in regions of interest down to horizontal grid mesh sizes in the order of kilometers.

Based on ICON the new model system ICON-ART is currently under development. ART stands for Aerosols and Reactive Trace gases. The extension ART has been previously used in COSMO-ART to study the feedback between aerosol, trace gases and the atmosphere (e.g. Bangert et al., 2012; Lundgren et al., 2013; Rieger et al., 2014). At the final stage of the model development ICON-ART will contain tropospheric and stratospheric chemistry, aerosol chemistry and aerosol dynamics. Moreover, as a fully online-coupled model system ICON-ART will account for the impact of gases and aerosols on radiation and clouds. By this, the feedback between gaseous and particulate matter and the state of the atmosphere will be realized.

This paper describes the basic equations, gives an overview of the physical parametrizations and numerical methods used in ICON-ART and shows results of the first applications. [If not stated differently, physical parameterizations \(e.g. radiation, microphysics\) used for the simulations in this paper are the same as described in Zängl et al. \(2014\).](#) Section 2 presents a short summary of ICON and the numerical methods used for the tracer transport. Section 3 gives the basic equations for the treatment of gaseous and particulate matter. Section 4 describes the handling of physical and chemical processes realized so far. Section 5 describes the temporal discretisation and the methods applied for the coupling of ICON and ART. In Sect. 6, results of first applications of ICON-ART are presented: a case study of the global distribution of short-lived bromocarbons, the spatial and temporal distribution of the ash cloud of the Eyjafjallajökull eruption in 2010, and finally an estimation of the global annual sea salt emission.

~~The ART part of the code can be obtained from the Institute for Meteorology and Climate Research, Karlsruhe Institute of Technology (KIT). For further information, see –~~

2 ICON

ICON-ART is based on the nonhydrostatic model system ICON which was developed in a joint project between the German Weather Service (DWD) and the Max-Planck-Institute for Meteorology (MPI-M) as a unified next-generation global numerical weather prediction (NWP) and climate modelling system. The main goals which were reached during the development of ICON are

- better conservation properties than in the existing global model systems GME (Majewski et al., 2002) and ECHAM (Stevens et al., 2013), with the obligatory requirement of exact local mass conservation and mass-consistent transport,
- better scalability on future massively parallel high-performance computing architectures, and

- the availability of some means of static mesh refinement. This was subsequently concretized into the capability of mixing one-way nested and two-way nested grids within one model application, combined with an option for vertical nesting in order to allow the global grid to extend into the mesosphere (which greatly facilitates the assimilation of satellite data). The nested domains extend only into the lower stratosphere in order to save computing time.

The dynamical core is based on the set of prognostic variables suggested by Gassmann and Herzog (2008), using flux-form equations for the thermodynamic scalars density ρ and virtual potential temperature θ_v . This allows achieving local mass conservation in a straightforward way. Mass-consistent tracer transport is obtained by passing temporally averaged mass fluxes to the transport scheme (see Sect. 2.1). Compared to the hydrostatic dynamical core developed as an intermediate step by Wan et al. (2013), several refinements of the model numerics have been implemented in order to reduce the amount of computational diffusion required for numerical stability. Most importantly, the velocity components entering into the divergence operator are averaged such as to obtain (nearly) second-order accuracy, and upwind-biased discretizations are used for the advection of the thermodynamic scalars. Besides imposing some implicit damping on small-scale structures, the latter reduce the numerical dispersion errors compared to second-order centred differences.

2.1 Tracer transport

Tracer transport is accounted for in a time-split fashion, i.e. by treating vertical and horizontal transport separately. In the vertical, the finite volume Piecewise Parabolic Method (PPM) (Colella and Woodward, 1984) is applied, where the tracer distribution in each cell is reconstructed using 1-D parabolas. The specific formulation in ICON is able to cope with large Courant-numbers ($CFL > 1$), following the approach proposed by Skamarock (2006).

For horizontal transport, a simplified Flux Form Semi Lagrangian (FFSL) scheme is used, similar to Miura (2007) and Lauritzen et al. (2011). The basic idea for computing the horizontal flux divergence, is to trace the area that is “swept” through an Eulerian cell edge

during one time step. In the current implementation, the swept area is approximated as a rhomboid and the tracer distribution in each cell is reconstructed using either 2-D linear, quadratic or cubic polynomials. The polynomial coefficients are estimated using a conservative weighted least squares reconstruction method (Ollivier-Gooch and van Altena, 2002). The performance of the scheme with first order (linear) polynomials is documented in Lauritzen et al. (2014).

Specific care is taken to retain tracer and air mass consistency. Firstly, mass fluxes passed to the transport scheme are temporal averages of the mass fluxes computed within the dynamical core (during the solution of the mass continuity equation). Secondly, as part of the time-split approach, the mass continuity equation is diagnostically re-integrated, as proposed by Easter (1993).

The transport scheme preserves linear correlations given that a monotone flux limiter is applied.

3 Basic equations

In the following the basic equations for the treatment of gases and aerosols in in ICON-ART are given. We will use the so called barycentric mean (indicated by a hat) with respect to the density of air ρ

$$\hat{\Psi} = \frac{\overline{\rho\Psi}}{\bar{\rho}}, \quad (1)$$

where Ψ is a (mass-)specific variable and will be further described in the following sections. A variable with a bar on top is Reynolds-averaged. The fluctuation Ψ'' is given by $\Psi'' =$

$\Psi - \widehat{\Psi}$. The total time derivative reads as

$$\frac{\widehat{d}}{dt} = \frac{\partial}{\partial t} + \widehat{\mathbf{v}} \cdot \nabla, \quad (2)$$

where $\widehat{\mathbf{v}}$ is the barycentric mean of the velocity. The continuity equation is given by

$$\frac{\widehat{d}\bar{\rho}}{dt} = -\bar{\rho} \nabla \cdot \widehat{\mathbf{v}}. \quad (3)$$

3.1 Gaseous tracers

For gaseous tracers, the scalar variable Ψ is given by the ratio of the partial density of gas l and the total density. This results in the barycentric averaged mass mixing ratio $\widehat{\Psi}_{g,l}$:

$$\widehat{\Psi}_{g,l} = \frac{\overline{\rho_{g,l}}}{\bar{\rho}} = \frac{\bar{\rho}_l}{\bar{\rho}}, \quad (4)$$

which will be used in the following equations. Within ICON-ART, the spatio-temporal evolution of gaseous tracers is treated according to the following equation:

$$\bar{\rho} \frac{\widehat{d}\widehat{\Psi}_{g,l}}{dt} = -\nabla \cdot (\overline{\rho \mathbf{v}'' \Psi_{g,l}''}) + P_l - L_l + E_l, \quad (5)$$

where $\nabla \cdot (\overline{\rho \mathbf{v}'' \Psi_{g,l}''})$ is the change due to turbulent fluxes. The production rate due to chemical reactions is given by P_l and the loss rate by L_l . Emissions are accounted for by E_l (processes are further explained within Sect. 4). Applying Eqs. (2) and (3), Eq. (5) can be rewritten in the so called flux form:

$$\frac{\partial (\bar{\rho} \widehat{\Psi}_{g,l})}{\partial t} = -\nabla \cdot (\widehat{\mathbf{v}} \bar{\rho} \widehat{\Psi}_{g,l}) - \nabla \cdot (\overline{\rho \mathbf{v}'' \Psi_{g,l}''}) + P_l - L_l + E_l, \quad (6)$$

where the flux divergence $\nabla \cdot (\widehat{\mathbf{v}} \bar{\rho} \widehat{\Psi}_{g,l})$ includes the horizontal and vertical advection of the gaseous compound l .

3.2 Monodisperse aerosol

For monodisperse aerosol, the scalar variable Ψ is given by the ratio of the mass concentration M_l of aerosol l and the total density. This results in the barycentric averaged mass mixing ratio $\widehat{\Psi}_l$:

$$\widehat{\Psi}_l = \frac{\overline{\rho \frac{M_l}{\rho}}}{\overline{\rho}} = \frac{\overline{M_l}}{\overline{\rho}}, \quad (7)$$

which will be used in the following equations. The balance equation for a monodisperse tracer in flux form is given by:

$$\begin{aligned} \frac{\partial (\overline{\rho \widehat{\Psi}_l})}{\partial t} = & -\nabla \cdot (\widehat{v} \overline{\rho \widehat{\Psi}_l}) - \nabla \cdot \overline{(\rho v'' \Psi_l'')} \\ & - \frac{\partial}{\partial z} (v_{\text{sed},l} \overline{\rho \widehat{\Psi}_l}) - \lambda_l \overline{\rho \widehat{\Psi}_l} + E_l, \end{aligned} \quad (8)$$

where $\nabla \cdot \overline{(\rho v'' \Psi_l'')}$ denotes the change due to turbulent fluxes, $v_{\text{sed},l}$ is the sedimentation velocity, λ_l the washout coefficient, and E_l stands for the emissions flux of tracer l (processes are further explained within Sect. 4).

3.3 Polydisperse aerosol

Based on the extended version of MADEsoot (Modal Aerosol Dynamics Model for Europe, extended by soot, Vogel et al., 2009), polydisperse aerosol particles are represented by several log-normal distributions. As first example of a polydisperse aerosol, we implemented sea salt aerosol. Mass mixing ratio and specific number are prognostic variables whereas the median diameter is a diagnostic variable. The standard deviation is kept constant. We use three log-normally distributed modes for sea salt aerosol (Lundgren et al., 2013). A list of modes, the according median diameters at emission and the standard deviation is given

in Table 1. During the simulation, some processes (namely the diameter-dependent) can change the median diameter of a distribution.

As number and mass are prognostic, we require the barycentric averages of the (mass-)specific number $\widehat{\Psi}_{0,l}$ as well as the mass mixing ratio $\widehat{\Psi}_{3,l}$ (the indices 0 and 3 **specify the are chosen due to the proportionality to these** moments of the distribution). They are formed by using Eq. (1) with the ratio of number (mass) concentration N_l (M_l) to the total density for the scalar variable Ψ . This results in:

$$\widehat{\Psi}_{0,l} = \frac{\overline{\rho \frac{N_l}{\rho}}}{\overline{\rho}} = \frac{\overline{N_l}}{\overline{\rho}}, \quad (9)$$

$$\widehat{\Psi}_{3,l} = \frac{\overline{\rho \frac{M_l}{\rho}}}{\overline{\rho}} = \frac{\overline{M_l}}{\overline{\rho}}. \quad (10)$$

3.3.1 Number

For log-normally distributed aerosol, the specific number $\widehat{\psi}_{0,l}$ of mode l with diameter d_p is given by:

$$\widehat{\psi}_{0,l}(\ln d_p) = \frac{\widehat{\Psi}_{0,l}}{\sqrt{2 \cdot \pi \cdot \ln \sigma_l}} \cdot \exp\left(-\frac{(\ln d_p - \ln \bar{d}_{0,l})^2}{2 \cdot \ln^2 \sigma_l}\right), \quad (11)$$

where the shape parameters of the log-normal distribution of mode l are the standard deviation σ_l and the median diameter $\bar{d}_{0,l}$. As stated before, the median diameter is a diagnostic variable and the standard deviation is held constant during the whole simulation.

For the total specific number of mode l , $\widehat{\Psi}_{0,l}$, we solve the following prognostic equation:

$$\begin{aligned} \frac{\partial (\overline{\rho \widehat{\Psi}_{0,l}})}{\partial t} = & -\nabla \cdot (\widehat{v} \overline{\rho \widehat{\Psi}_{0,l}}) - \nabla \cdot \overline{(\rho v'' \Psi_{0,l}'')} \\ & - \frac{\partial}{\partial z} (v_{\text{sed},0,l} \overline{\rho \widehat{\Psi}_{0,l}}) - W_{0,l} + E_{0,l}, \end{aligned} \quad (12)$$

where $\nabla \cdot \overline{(\rho v'' \Psi_{0,l}'')}$ is the turbulent flux of the specific number of mode l . $v_{\text{sed},0,l}$ is the sedimentation velocity of the specific number of mode l . $W_{0,l}$ denotes the loss of particles of mode l due to wet below-cloud-scavenging. $E_{0,l}$ denotes the number emission flux of particles of mode l (processes are further explained within Sect. 4).

3.3.2 Mass

The mass mixing ratio $\widehat{\psi}_{3,l}$ of log-normally distributed aerosol of mode l at diameter d_p is given by:

$$\widehat{\psi}_{3,l}(\ln d_p) = \frac{\widehat{\Psi}_{3,l}}{\sqrt{2 \cdot \pi} \cdot \ln \sigma_l} \cdot \exp \left(-\frac{(\ln d_p - \ln \bar{d}_{3,l})^2}{2 \cdot \ln^2 \sigma_l} \right), \quad (13)$$

where $\bar{d}_{3,l}$ denotes the median diameter of mode l . For the emission scheme, the according median diameter of the emissions, $\bar{d}_{3,l,E}$, is calculated with the following relation (Seinfeld

and Pandis, 2006):

$$\ln \bar{d}_{3,l,E} = \ln \bar{d}_{0,l,E} + 3 \cdot \ln^2 \sigma_l \quad (14)$$

The according prognostic equation that is solved for $\widehat{\Psi}_{3,l}$, is given by:

$$\begin{aligned} \frac{\partial \left(\bar{\rho} \widehat{\Psi}_{3,l} \right)}{\partial t} = & - \nabla \cdot \left(\widehat{v} \bar{\rho} \widehat{\Psi}_{3,l} \right) - \nabla \cdot \left(\overline{\rho v'' \Psi_{3,l}''} \right) \\ & - \frac{\partial}{\partial z} \left(v_{\text{sed},3,l} \bar{\rho} \widehat{\Psi}_{3,l} \right) - W_{3,l} + E_{3,l}, \end{aligned} \quad (15)$$

where $\nabla \cdot \left(\overline{\rho v'' \Psi_{3,l}''} \right)$ is the turbulent flux of the mass mixing ratio of mode l . $v_{\text{sed},3,l}$ is the sedimentation velocity of the mass mixing ratio of mode l . $W_{3,l}$ denotes the loss in the mass mixing ratio of mode l due to below-cloud-scavenging. $E_{3,l}$ denotes the mass emission flux of mode l (processes are further explained within Sect. 4).

4 Physical and chemical processes

Within this section, we want to present the physical and chemical parameterizations we use within ICON-ART. We have ordered the processes within this section in the same sequence as ICON-ART computes them.

4.1 Emission

Although emissions are rather a boundary condition than a physical process, we decided to include them at this point, as they are the source term for primary aerosol and also (besides chemical production) for gaseous compounds.

4.1.1 Very short-lived bromocarbons

In this study CHBr_3 and CH_2Br_2 have been included as idealized chemical tracers. Both very short-lived bromocarbons were introduced into the model domain by prescribing a con-

stant volume mixig ratio (vmr) globally for pressures greater than 950 hPa. The vmr values are taken from the WMO Ozone assessment 2010 (World Meteorological Organization, 2011) and are listed in Table 2.

4.1.2 Volcanic ash

Usually the actual source strength during an ongoing volcanic eruption is not known. In order to overcome this problem there is a need to parameterize those emissions. In the following we will outline in which way the emissions are parameterized in ICON-ART.

The idea of the currently implemented parameterization is based on the experience we have made during the recent eruptions of the Iceland volcanoes (Eyjafjallajökull in April 2010 and Grimsvötn in May 2011). The only information that was available within a short time delay during these events was the height of the top of the plume of the volcano. We assume that this information will also be available in future events. For that reason we derived a parameterization that only depends on the top of the plume height.

Stohl et al. (2011) used the method of inverse modeling with a Lagrangian model to derive vertical profiles of the emissions of volcanic ash for the Eyjafjallajökull during the 2010 eruption. Figure 1a shows the vertical profile of the emissions that was derived by Stohl et al. (2011) applying ECMWF data to drive the dispersion model. We normalized the emission values with the maximum value and normalized the height above surface with 12.3 km, which was the height of the top of the plume observed in this case. The latter gives the dimensionless height z^* :

$$z^* = \frac{z}{h}, \quad (16)$$

where z is the height in m and h the height of the top of the plume. By this procedure we [get-obtain](#) a dimensionless vertical emission profile that is shown in Fig. 1b. We assume that the shape of this normalized profile is universal. The profile is fitted with a Gaussian distribution. The result is shown by the blue curve in Fig. 1b. The fit-function $f_e(z^*)$ is given

by:

$$f_e(z^*) = a_1 + a_2 \exp\left(-\left(\frac{z^* - a_3}{a_4}\right)^2\right), \quad (17)$$

where $a_1 = 0.0076$, $a_2 = 0.9724$, $a_3 = 0.4481$, and $a_4 = 0.3078$.

Assuming that we know the total emission E_{tot} in kg s^{-1} we can calculate the vertical emission profile $E(z^*)$ by:

$$E(z^*) = E_{\text{tot}} \frac{f_e(z^*)}{\int_0^1 f_e(z^*) dz^*}, \quad (18)$$

where an analytical solution of the integral in the denominator is given by

$$\int_0^1 f_e(z^*) dz^* = a_1 + 0.5\sqrt{\pi}a_2a_4 \cdot \left[\text{erf}\left(\frac{1-a_3}{a_4}\right) + \text{erf}\left(\frac{a_3}{a_4}\right) \right]. \quad (19)$$

So far we have calculated the emission terms independent of the size class. ICON-ART simulates the size distribution of volcanic ash using a sectional approach with six monodisperse size bins (1, 3, 5, 10, 15, and 30 μm). For distributing the total emission to the individual size classes we used the observed size distributions close to the Eyjafjallajökull that are reported in Schumann et al. (2011). Based on these measurements we [get obtain](#) distribution factors f_l given in Table 3.

In order to specify E_{tot} we once more rely on the only information which is available within a short delay of time. Mastin et al. (2009) give a parameterization to calculate E_{tot} as

a function of the height of the plume top at the volcano:

$$E_{\text{tot}} = \left(\frac{1}{0.3035} h \right)^{\frac{1}{0.241}}. \quad (20)$$

In this equation, h is given in [km] and E_{tot} results in kg s^{-1} . With this parameterization, we have all the ingredients to calculate the emission term E_l for Eq. (8):

$$E_l = \frac{E_{\text{tot}} \cdot f_l}{V} \cdot f_{\text{lrt}}, \quad (21)$$

where V is the volume of a grid cell. The factor f_{lrt} is the fraction of emitted volcanic ash which is available for long-range transport.

4.1.3 Sea salt aerosol

Emissions of sea salt aerosol are realized as described in Sect. 2.5 of Lundgren et al. (2013). The emission diameters $\bar{d}_{0,l,\text{emiss}}$, $\bar{d}_{3,l,\text{emiss}}$ and the standard deviation σ_l of the three log-normally distributed modes are given in Table 1.

The emission fluxes $E_{0,l}$ and $E_{3,l}$ that are required for Eqs. (12) and (15) are calculated according to three different emission parameterizations depending on the mode (Lundgren et al., 2013). For the film mode (Mode A), the emission fluxes are calculated following Mårtensson et al. (2003). This parameterization depends on sea surface temperature and wind speed at 10m above ground. Emission fluxes of the spume mode (Mode B) are parameterized as a function of wind speed at 10m above ground as described by Monahan et al. (1986). For the jet mode (Mode C), the parameterization of Smith et al. (1993) is used which describes the emission fluxes also as a function of the 10m wind speed.

4.2 Sedimentation

Within ICON-ART, the sedimentation is treated as an additional vertical advection with an always downward directed vertical velocity $v_{\text{sed},l}$. For the vertical advection, a finite-volume

piecewise parabolic method with a quartic interpolation is used (Colella and Woodward, 1984). A monotonic flux limiter guarantees positive definiteness. The formulation of the vertical advection is Courant-number independent (Skamarock, 2006).

4.2.1 Monodisperse aerosol

The sedimentation velocity for the monodisperse particles $v_{\text{sed},l}$ is based on Stokes law (e.g. Seinfeld and Pandis, 2006):

$$v_{\text{sed},l} = \sqrt{\frac{4gD_{p,l}C_{c,l}\rho_p}{3C_d\rho}}, \quad (22)$$

where g is the gravitational acceleration [m s^{-2}], $D_{p,l}$ is the particle diameter [m], ρ_p is the particle density [kg m^{-3}], C_d is the drag coefficient. $C_{c,l}$ is the dimensionless slip correction factor, which depends on the particle diameter and the mean free path of air λ_{air} [m]:

$$C_{c,l} = 1 + \frac{2\lambda}{D_{p,l}} \left[1.257 + 0.4 \exp\left(-\frac{1.1D_{p,l}}{2\lambda_{\text{air}}}\right) \right]. \quad (23)$$

4.2.2 Polydisperse aerosol

The sedimentation velocity of polydisperse aerosol is calculated as described in Binkowski and Shankar (1995) for the zeroth and third moment of the aerosol distribution. By this approach, the size-dependence of the gravitational settling is considered.

4.3 Turbulence and dry deposition

The turbulent fluxes within ICON are treated by an [an-a](#) one-dimensional prognostic TKE turbulence scheme (Raschendorfer, 2001). The interface allows for the additional vertical diffusion of tracers. As a necessary boundary condition, a surface flux $-\overline{w''\Psi''}$ is required by

the turbulence scheme:

$$-\overline{w''\Psi''} = C_h^d |\mathbf{v}_h| (\widehat{\Psi}_a - \widehat{\Psi}_s), \quad (24)$$

where C_h^d is the turbulent transfer coefficient for heat, v_h the horizontal wind velocity, $\widehat{\Psi}_a$ the value of $\widehat{\Psi}$ in the lowest model layer and $\widehat{\Psi}_s$ a value of $\widehat{\Psi}$ at the surface.

In [case the cases](#) of gases and particles this surface flux is determined by the dry deposition process. A commonly used parametrisation of this process is based on the dry deposition velocity v_{dep} :

$$-\overline{w''\Psi''} = v_{\text{dep}} \widehat{\Psi}(z_R), \quad (25)$$

with $z_R = 10 \cdot z_0$ where z_0 is the roughness length. The deposition velocity v_{dep} of aerosols is calculated as described in Binkowski and Shankar (1995). Combining Eqs. (24) and (25) results in an artificial surface value:

$$\widehat{\Psi}_s = \widehat{\Psi}_a \left(\frac{1 - \frac{v_{\text{dep}}}{C_h^d |\mathbf{v}_h|} \frac{2 \cdot z_R}{\Delta z}}{1 + \frac{v_{\text{dep}}}{C_h^d |\mathbf{v}_h|} - \frac{v_{\text{dep}}}{C_h^d |\mathbf{v}_h|} \frac{2 \cdot z_R}{\Delta z}} \right), \quad (26)$$

which can then be used to calculate the surface flux $-\overline{w''\Psi''}$ in Eq. (24).

4.4 Washout

One of the major sinks of atmospheric aerosol particles is the washout of particles by rain. We use different parameterizations depending on the description of aerosol (monodisperse, polydisperse) which are summarized in the following. So far, the loss of particles by nucleation and impaction scavenging is not considered.

4.4.1 Monodisperse aerosol

The washout rate of monodisperse aerosol is given by

$$W_l = -\Lambda_l \bar{\rho} \widehat{\Psi}_l, \quad (27)$$

where Λ_l is the scavenging coefficient for particles in mode l . With the assumptions, that size and terminal fall velocity of aerosol particles ~~is~~ are small compared to rain drops, Λ_l for monodisperse particles is given by

$$\Lambda_l = \int_0^{\infty} \frac{\pi}{4} D_r^2 w(D_r) E(D_r, D_{p,l}) n_r(D_r) dD_r. \quad (28)$$

where D_r is the diameter of a rain drop, $D_{p,l}$ is the diameter of particles in mode l , $w(D_r)$ is the terminal fall velocity of rain drops, $E(D_r, D_{p,l})$ is the collision efficiency between particles of diameter D_r and $D_{p,l}$, and $n_r(D_r)$ is the rain drop number density size distribution.

To further simplify Eq. (28) we assume that the rain drops are monodisperse. Using the definition of the rain fall intensity

$$R = \frac{\pi}{6} D_r^3 w(D_r) N_r \rho_w, \quad (29)$$

where N_r is the total number concentration of rain droplets and ρ_w the density of water, we ~~get~~ obtain

$$\Lambda_l = \frac{3 E(D_r, D_{p,l}) R}{2 \rho_w D_r}. \quad (30)$$

Assuming large particles ($D_{p,l} > 1 \mu\text{m}$) and a constant representative rain drop size of $D_r = 5 \times 10^{-4} \text{ m}$ we ~~get~~ obtain $E(D_r, D_{p,l}) \approx 1$. This results in a scavenging coefficient of

$$\Lambda_l \approx 3R, \quad (31)$$

where Λ_l is given in $[\text{s}^{-1}]$ and R is given in $[\text{kg m}^{-2} \text{s}^{-1}]$. The scavenging coefficient calculated by Eq. (31) is then used in Eq. (27) to calculate the change of $\widehat{\Psi}_l$ by washout.

4.4.2 Polydisperse aerosol

The removal of polydisperse aerosol by wet deposition is parameterized as a function of the particle size distribution and the size distribution of rain droplets as described in Lundgren et al. (2013). In contrast to Lundgren et al. (2013), we use a precipitation rate depending on height to determine the local droplet distribution instead of using surface precipitation rate over the complete precipitation column.

4.5 Chemical reactions

The chemical degradation of the atmospheric trace gases is parameterized by a simplified chemistry scheme. Up to now only two very short-lived bromocarbons (CHBr_3 and CH_2Br_2) were included in ICON-ART. Both substances are depleted due to chemical reactions with OH or by photolysis with no chemical production terms. As the total tropospheric chemical lifetimes for both species are known these chemical lifetimes are recalculated into a total loss rate being used in the balance equation Eq. (6).

4.6 Subgrid-scale convective transport

The contribution of transport and mixing by subgrid-scale convection on the temporal evolution of the tracer concentrations is an addition to the advection term in Eqs. (6), (8), (12) and (15) which is necessary at coarse grid mesh sizes ($\gg 1$ km). In order to account for this additional transport and mixing, we adapted the parameterization by Bechtold et al. (2008), which is used operationally in ICON and the IFS (Integrated Forecast System) model of ECMWF (European Centre for Medium-Range Weather Forecasts). The parameterization uses a bulk mass flux scheme and considers deep, shallow and mid-level convection. For a detailed description of the convection scheme we refer to Bechtold et al. (2008). For the convective transport of tracers only shallow and deep convection are considered.

5 Realisation Numerical implementation

Within this section we give an overview of the numerical implementation focusing on the numerical time integration and the coupling structure of the host model ICON with the extension ART.

5.1 Temporal discretisation

Numerical time integration of Eq. (6) and analogously Eqs. (8), (12) and (15) can be carried out applying different methods. Following the process splitting concept used for most processes in ICON, we carry out the numerical time integration of the individual processes step by step. That means that the tendency due to a certain process is calculated with the according prognostic state variables that are already updated by the previous processes. Within one integration over time from time level t_i to time level t_{i+1} , several updates due to different processes may be performed sequentially. Starting with $\widehat{\Psi}(t_i)$, the time integration scheme that leads to $\widehat{\Psi}(t_{i+1})$ is outlined below:

$$\widehat{\Psi}_1(t_{i+1}) = \widehat{\Psi}(t_i) + \frac{\Delta t}{\bar{\rho}} \cdot E_l(\widehat{\Psi}(t_i)) \quad (32)$$

$$\widehat{\Psi}_2(t_{i+1}) = \widehat{\Psi}_1(t_{i+1}) + \frac{\Delta t}{\bar{\rho}} \cdot \text{ADV}_l(\widehat{\Psi}_1(t_{i+1})) \quad (33)$$

$$\widehat{\Psi}_3(t_{i+1}) = \widehat{\Psi}_2(t_{i+1}) + \frac{\Delta t}{\bar{\rho}} \cdot \text{SED}_l(\widehat{\Psi}_2(t_{i+1})) \quad (34)$$

$$\widehat{\Psi}_4(t_{i+1}) = \widehat{\Psi}_3(t_{i+1}) + \frac{\Delta t}{\bar{\rho}} \cdot \text{DIF}_l(\widehat{\Psi}_3(t_{i+1})) \quad (35)$$

$$\widehat{\Psi}_5(t_{i+1}) = \widehat{\Psi}_4(t_{i+1}) + \frac{\Delta t}{\bar{\rho}} \cdot W_l(\widehat{\Psi}_4(t_{i+1})) \quad (36)$$

$$\widehat{\Psi}_6(t_{i+1}) = \widehat{\Psi}_5(t_{i+1}) + \frac{\Delta t}{\bar{\rho}} \cdot \text{CHEM}_l(\widehat{\Psi}_5(t_{i+1})) \quad (37)$$

$$\widehat{\Psi}(t_{i+1}) = \widehat{\Psi}_6(t_{i+1}) + \frac{\Delta t}{\bar{\rho}} \cdot \text{CON}_l(\widehat{\Psi}_6(t_{i+1})), \quad (38)$$

with $\Delta t = t_{i+1} - t_i$ and the process rates for emissions $E_l(\widehat{\Psi}(t_i))$, advection $\text{ADV}_l(\widehat{\Psi}_1(t_{i+1}))$, sedimentation $\text{SED}_l(\widehat{\Psi}_2(t_{i+1}))$, turbulent diffusion $\text{DIF}_l(\widehat{\Psi}_3(t_{i+1}))$, washout $W_l(\widehat{\Psi}_4(t_{i+1}))$, chemistry $\text{CHEM}_l(\widehat{\Psi}_5(t_{i+1}))$, and subgrid-scale convective transport $\text{CON}_l(\widehat{\Psi}_6(t_{i+1}))$. The term for the subgrid-scale convective transport is an addition to the advection. It describes the temporal change caused by vertical mixing due to shallow and deep convection. This term appears in those cases where the horizontal grid spacing does not allow to describe the process of shallow and deep convection explicitly. In contrast to the uniform Δt in Eqs. (32) to (38), a subcycling for the sedimentation process (Eq. 34) is carried out using the dynamics time step. Due to stability reasons the implicit Euler solution has been taken for the [VSLs](#) very short-lived substances (VSLs) tracers in this study.

5.2 Coupling ICON and ART

Within ICON, the additional ART modules are integrated in a way that ensures a flexible plug-in of process routines as well as an unaffected ICON simulation in case ART is not used. This is realized by interface modules containing a subroutine with calls to the ART modules. These calls are separated by preprocessor (`#ifdef`) structures:

```
MODULE mo_art_example_interface
#ifdef __ICON_ART
  USE mo_art_example, ONLY: art_example
#endif
CONTAINS
  SUBROUTINE art_example_interface( in1,in2,out1)
  [...]
#ifdef __ICON_ART
  CALL art_example(in1,in2,out1)
#endif
```

Interface modules (e.g. `mo_art_example_interface`) are part of the ICON code whereas the routines called by the interfaces (e.g. `mo_art_example`) are part of the ART code.

The sequence of calls to the different routines in the ICON code is illustrated in blue in Fig. 2. Within one complete integration over time in the ICON model, the dynamics is followed by the call to the tracer and hydrometeor advection calculation. Thereafter, the so called fast and slow physics processes are called. Saturation adjustment, turbulent diffusion and microphysics are accounted for as fast physical processes. Radiation, convection, the calculation of the cloud cover and the gravity wave drag are referred to as slow physics. For stability reasons, a subcycling with a shorter time step is performed within the dynamics.

The ART processes are marked by orange boxes within the ICON-ART sequence in Fig. 2. Directly at the beginning, the emissions of aerosols and gaseous species are calculated. The advection of ART tracers is done within the ICON tracer framework followed by the sedimentation where a subcycling is used for stability reasons. Within the fast physics, turbulent diffusion, washout and chemical reactions are treated. Finally, within the slow physics, vertical transport due to subgrid-scale convection is performed. Advection, turbulence and convection are marked by orange frames to illustrate that these are processes that are extended inside the ICON code for the treatment of aerosol particles and trace gases.

The aerosol and gaseous concentrations treated by ART are updated directly within the according process routines or interfaces (see Sect. 5.1).

We performed tests with different numbers of cores (powers of two between 64 and 1024) and found roughly a factor of 3 for an ICON-ART simulation compared to an ICON simulation without ART. The ART simulation for this purpose was performed with volcanic ash and sea salt aerosol switched on. This shows that the scalability of ICON applies also to ICON-ART.

6 First applications

In this section we present examples of first applications of the model system ICON-ART. According to the processes implemented so far we focus on very short-lived bromocarbons, aerosol from volcanic eruptions and sea salt. [The forcing of dynamics and transport in these simulations was done by parameterized processes of the NWP version of ICON and namelist parameters were set accordingly. A R2B06 grid \(about 40 km horizontal grid spacing\) with no nested domain has been chosen with 90 non-equidistant vertical levels up to 75 km together with a time step of 72 s. The vertical thickness of the lowest model layer is 20 m, the maximum thickness of about 2600 m is reached at the top of the model domain.](#)

6.1 Simulation of very short-lived bromocarbons

Biogenic emitted ~~very short-lived substances (VSLs)~~ [VSLs](#) have a short chemical lifetime in the atmosphere compared to tropospheric transport time scales (World Meteorological Organization, 2011). As the ocean is the main source of the most prominent VSLs, Bromoform (CHBr_3) and Dibrommethane (CH_2Br_2), this leads to large concentration gradients in the troposphere. The tropospheric depletion of CHBr_3 is mainly due to photolysis whereas for CH_2Br_2 the loss is dominated by oxidation by the hydroxyl radical (OH) both contributing to the atmospheric inorganic bromine (Bry) budget.

Once released active bromine radicals play a significant role in tropospheric as well as stratospheric chemistry as it is in particular involved in ozone destroying catalytic cycles. Although the bromine budget in the stratosphere is dominated by release of Bry from long-lived source gases (e.g. halons) which is relatively well understood the contribution of biogenic VSLs to stratospheric bromine is still uncertain (e.g., Aschmann and Sinnhuber, 2013).

Thus it is important to simulate the emissions, chemistry and transport of VSLs from the surface to the lower stratosphere reasonably having in mind that due to the short chemical lifetime in the troposphere the transport of CHBr_3 and CH_2Br_2 is mainly expected in regions

of deep convection taking place frequently as e.g. the tropical West Pacific (e.g., Aschmann et al., 2009).

To test the ability of ICON-ART to simulate this fast transport from the ocean surface into the lower stratosphere CHBr_3 and CH_2Br_2 have been included as idealized chemical tracers. The boundary conditions and the chemical lifetimes are taken from the WMO Ozone assessment 2010 (World Meteorological Organization, 2011). They are recalculated into a destruction frequency for the implicit solution of the balance equation Eq. (6) (see Table 2).

~~The forcing of dynamics and transport in this simulation was done by parameterized processes of the NWP version of ICON and namelist parameters were set accordingly. As horizontal resolution a R2B06 grid (about 40 km horizontal grid spacing) with no nested domain has been chosen with 90 levels up to 75 together with a time step of 72. The simulation was initialized with data from the ECMWF Integrated Forecast System (IFS) for 1 June 2012 00:00 UTC. The sea surface temperature was initialized with the skin temperature from the IFS initialisation data and kept constant during the simulation. The output was interpolated on a regular latitude-longitude grid with $0.5^\circ \times 0.5^\circ$ resolution on pressure levels.~~

To estimate the ability of ICON-ART in the NWP mode to simulate longer time scales necessary for the diffusion of the very short-lived bromocarbons into the upper troposphere/lower stratosphere (UTLS) the zonal mean of the simulated temperature and of the zonal wind are shown in Fig. 3 and compared to ERA-Interim data (Dee et al., 2011) at 1 October 2012. In this model setup ICON-ART is able to reproduce the main characteristics of the reanalysed meteorology 122 days after initialisation in the UTLS. For example, the simulated temperature agrees well with the ERA-Interim data in absolute temperature values in the tropical lower stratosphere as well as in the minimum temperatures within the stratospheric polar vortex in the Southern Hemisphere. A good agreement with the ERA-Interim data is also found for the wind fields revealing that ICON-ART in the NWP mode is suitable for the investigation of the tracer transport of the VSLs from the surface into the UTLS region.

In Fig. 4 the zonal mean of the simulated distribution of CHBr_3 and CH_2Br_2 at 1 October 2012 is shown. Therein the fixed boundary condition for $p \geq 950$ hPa is visible together with the fast upward transport into the upper troposphere/lower stratosphere in the tropics. Due to its longer lifetime CH_2Br_2 is transported quasi horizontally in the upper troposphere into the mid-latitudes and also slightly higher up into the lower stratosphere compared to the about five times shorter lived CHBr_3 .

The simulated fast transport into the lower stratosphere occurs mainly in the tropical West Pacific region (see Fig. 5) which is in agreement with previous studies as the preferred region of the transport of VLS into the lower stratosphere (e.g., Aschmann et al., 2009; Sala et al., 2014). For CHBr_3 the distribution at 150 hPa is more inhomogeneous than for CH_2Br_2 due to its shorter life time pointing to the regions of fast vertical transport into the lower stratosphere. Consequently, the advection into the mid-latitudes is more visible in the longer lived CH_2Br_2 compared to CHBr_3 .

Zonal mean profiles of the simulated CHBr_3 and CH_2Br_2 averaged between 20° S and 20° N are compared to mean tropical observations in Fig. 6. The mean observations of CHBr_3 and CH_2Br_2 are based on a compilation of data from different projects and campaigns on different platforms: the CARIBIC project between 2009 and 2013 (Wisher et al., 2014), the campaigns TRACE-A in 1992, STRAT in 1996, PEM-Tropics in 1996 and 1999, ACCENT in 1999, TRACE-P in 2001, Pre-AVE, AVE and CR-AVE in 2004 and 2006, TC4 in 2007, HIPPO-1 to HIPPO-5 between 2009 and 2011, SHIVA in 2011, and TACTS/ESMVal in 2012 (G. Krysztofiak, personal communication, 2014). The observed mean tropical profiles have been multiplied by 1.70 for CHBr_3 and 1.15 for CH_2Br_2 , respectively, for an easier comparison with the modelled profiles. This is justified as the boundary value of World Meteorological Organization (2011) differs significantly from the observed value and as the calculation of the concentrations of the VLS is linearized due to the lifetime approach and therefore depends linearly on the concentration of the VLS themselves. The ICON-ART results of both brominated substances exhibit the characteristic C-shape profile form and more pronounced for the short-lived CHBr_3 than for CH_2Br_2 , both also being observed. The volume mixing ratios of about 1 pptv at about 200 hPa (about 11 km) for the longer-lived

CH_2Br_2 is in good agreement with the mean observations as well as other model studies which are in the range of about 0.9 pptv for CH_2Br_2 . For the shorter-lived CHBr_3 the observations are in the range of 0.3 to 1.1 with a mean of about 0.6 pptv (World Meteorological Organization, 2011), and thus slightly lower than the simulated volume mixing ratio. This discrepancy might be caused to a possible sampling bias of the highly variable CHBr_3 in that altitude region due to its short lifetime (e.g., Kerkweg et al., 2008; Liang et al., 2010; Sala et al., 2014; Wisher et al., 2014).

6.2 Volcanic ash

The forecast of volcanic ash particles is of great interest for aviation. Moreover the impact of volcanic ash particles on radiation and cloud properties is of importance for climate change and most probably also for weather forecast. In order to test the capability of ICON-ART to simulate the spatial and temporal distribution of volcanic ash particles, we performed a simulation of the ash cloud of the Eyjafjallajökull eruption in April 2010. This eruption led to a shutdown of civil aviation over large parts of Europe. In response, high efforts have been undertaken to improve the prediction of the volcanic ash plume by deriving the volcanic eruption source strength and vertical emission profile from direct observations (e.g. Stohl et al., 2011). With ICON-ART's predecessor, COSMO-ART, time lagged ensembles have been produced to assess the uncertainties of the volcanic ash forecast due to meteorology (Vogel et al., 2014). Based on both studies we developed a new parametrization of the source term as outlined in Sect. 4.1.2. We performed a five days continuous forecast, that means ICON-ART was initialized only at the beginning of the forecast period. The simulation starts at 14 April 2010 00:00 UTC. We use a R2B06 grid that results in a horizontal grid mesh size of about 40 km and specified the observed emission heights based on Vogel et al. (2014). ~~The total emission flux is emission fluxes for the different size bins are~~ calculated using Eq. (20). ~~This equation requires a specification of the factor f_{IRT} . After some tuning we found that $f_{\text{IRT}} = 0.04$ is 21).~~ It is assumed that a significant fraction of the total emitted mass is deposited close to the source due to the gravitational settling of large particles, aggregation of small particles

and organized downdrafts. Common values for the ash fraction available for long range transport lie between 1 % and 10 % (e.g. Witham et al., 2012). We chose an appropriate value of $f_{\text{rt}} = 0.04$ in Eq. (21) which lies well in that range.

Figure 7 shows time series of the simulated and the observed number concentrations of particles with a diameter of $3 \mu\text{m}$ at the meteorological observatory Hohenpeissenberg, Germany. The arrival of the ash plume is captured quite well by the simulation keeping in mind that we have used a relatively coarse grid mesh size and that the forecast lead time is already four days when the plume reaches the station.

Lidar measurements of the volcanic ash plume were carried out by Gasteiger et al. (2010) at Maisach, Germany. The quantities derived from those measurements are not directly comparable to modeled variables of ICON-ART. Therefore, we calculated the cross sections of all size bins as a proxy. A comparison of the observed range-corrected signal and the simulated cross section of the ash particles is given in Fig. 8. It is very promising that the model simulations capture some of the main features of the observed plume. This includes the time when the maximum at higher levels occurs, as well as the descent of the plume. The thickness of the simulated plume differs from the observations which can be explained by the vertical grid spacing used for the simulations. In the height range where the maximum occurs the vertical grid spacing is in the order of 300 m.

In Fig. 9, the horizontal distribution of the total volcanic ash concentration (sum of all six size bins) is shown at four reference heights at 16 April 2010 12:00 UTC. The shape of the ash plume is very characteristic. It spans a horizontally thin band across the northern coasts of France, Germany, Poland and the Baltic. This band is partly connected to Iceland by an area of low concentrations over the North Sea. Although further investigation and validation is needed concerning the absolute values of the ash concentration, the spatial pattern of the simulated ash plume is in very good agreement with previous studies including model results and observations (e.g. Vogel et al., 2014, Fig. 9; Emeis et al., 2011, Fig. 12; Pappalardo et al., 2013, Fig. 11).

6.3 Sea salt aerosol

Sea salt aerosol is directly emitted into the atmosphere as a result of the wind stress at the sea surface. The earth's surface is roughly 70 % covered by oceans and sea salt is probably the key aerosol constituent over large parts of the oceanic regions. Consequently, sea salt plays a major role for atmospheric processes from weather to climate time scales. For this reason sea salt has to be taken into account in online-coupled weather forecast and climate models. In order to test the emission parametrization used in ICON-ART (see Sect. 4.1.3) a one year simulation was performed starting at 29 March 2014 using a R2B06 grid (about 40 km horizontal grid spacing).

The total global mass production rate of sea-spray aerosol varies strongly between different parameterizations as highlighted by the review paper of Grythe et al. (2014). For sea salt particles with a diameter of less than $10\ \mu\text{m}$ they found a range of $3\text{--}70\ \text{Pg yr}^{-1}$ for the global annual emissions. Spada et al. (2013) estimated $3.9\text{--}8.1\ \text{Pg yr}^{-1}$ for a size range of 0.1 to $15\ \mu\text{m}$. Using our parameterization as described in Sect. 4.1.3 and simulating one year, we obtain a global mass production for particles smaller than $10\ \mu\text{m}$ of $7.36\ \text{Pg yr}^{-1}$. For particles with a diameter below $15\ \mu\text{m}$, we ~~get~~ obtain $10.86\ \text{Pg yr}^{-1}$. This number is somewhat higher than the range given by Spada et al. (2013). Summing up the total emissions of all three modes contained in ICON-ART, we obtain $26.0\ \text{Pg yr}^{-1}$. The results are summarized in Table 4.

The horizontal distribution of the annual emissions in $\text{kg m}^{-2}\ \text{yr}^{-1}$ is presented in Fig. 10. The strongest source regions can be found around Antarctica between $45^\circ\ \text{S}$ and $60^\circ\ \text{S}$ and in the northern Pacific and northern Atlantic between $30^\circ\ \text{N}$ and $60^\circ\ \text{N}$. This is in line with recent studies concerning global sea-salt emissions (e.g. Grythe et al., 2014; Ovadnevaite et al., 2014).

7 Summary

We presented a first version of the extended modeling system ICON-ART. The goal of developing ICON-ART is to account for the interactions of atmospheric trace substances (gases and particles) and the state of the atmosphere within a numerical weather prediction model from the global to regional scale. This first version contains the numerical treatment of the balance equations for gaseous compounds, monodisperse particles and polydisperse particles. We presented these equations as well as the physical parameterizations and numerical methods we use to solve these equations.

Two very short-lived substances (VSLS), Bromoform (CHBr_3) and Dibrommethane (CH_2Br_2), were simulated with ICON-ART. Their volume mixing ratio of about 1 pptv in the tropical upper troposphere as well as the regional distribution with the tropical West Pacific region as the main source region of stratospheric VSLS is in good agreement with observations and previous model studies.

We simulated the spatial and temporal concentration distribution for the Eyjafjallajökull eruption that occurred in March 2010. Using a novel approach, we parameterize the emissions source strength as well as the vertical distribution in dependence on the plume height which is commonly the first available information during an ongoing eruption. We tuned the emission parameterization based on observations. A preliminary comparison with observed Lidar profiles shows that ICON-ART reproduces main features as plume height and temporal development. Moreover, the simulation shows the characteristic shape of the Eyjafjallajökull ash plume as seen in previous publications and observations.

Sea salt is treated as a polydisperse aerosol with prognostic mass and number and diagnostic diameter. We conducted a one-year simulation in order to compare our mass emission fluxes with those derived in other studies. We obtain a total emission flux of 26.0 Pg yr^{-1} and an emission flux of particles with diameter less than $10 \mu\text{m}$ of 7.36 Pg yr^{-1} . This is within the range given in the review paper by Grythe et al. (2014).

The first version of ICON-ART, which is presented in this publication, is the basis for a comprehensive modeling framework capable of simulating secondary aerosol formation and the impact of aerosol on clouds as well as on radiation.

8 Code availability

Currently the legal departments of MPI and DWD are finalizing the ICON license. The final version accomplished with the ART license is foreseen for October 2015. If you want to obtain ICON-ART you will first need to sign an ICON license which you will get at: <http://www.mpimet.mpg.de/en/science/models/model-distribution.html>. In a second step you will get the ART code after signing the ICON-ART license which will be available at: <http://ICON-ART.imk-tro.kit.edu/>.

Acknowledgements. We want to thank the ICON development team at DWD and MPI-M for their support at this first stage of ICON-ART development. For the advice and access to atmospheric halocarbon measurements we also thank Elliot Atlas from the University of Miami, Andreas Engel and Harald Bönisch from the University of Frankfurt, David Oram from the University of East Anglia and Donald R. Blake from the University of California.

The service charges for this open access publication have been covered by a Research Centre of the Helmholtz Association.

References

- Aschmann, J. and Sinnhuber, B.-M.: Contribution of very short-lived substances to stratospheric bromine loading: uncertainties and constraints, *Atmos. Chem. Phys.*, 13, 1203–1219, doi:10.5194/acp-13-1203-2013, 2013.
- Aschmann, J., Sinnhuber, B.-M., Atlas, E. L., and Schauffler, S. M.: Modeling the transport of very short-lived substances into the tropical upper troposphere and lower stratosphere, *Atmos. Chem. Phys.*, 9, 9237–9247, doi:10.5194/acp-9-9237-2009, 2009.

- Baklanov, A., Schlünzen, K., Suppan, P., Baldasano, J., Brunner, D., Aksoyoglu, S., Carmichael, G., Douros, J., Flemming, J., Forkel, R., Galmarini, S., Gauss, M., Grell, G., Hirtl, M., Joffre, S., Jorba, O., Kaas, E., Kaasik, M., Kallos, G., Kong, X., Korsholm, U., Kurganskiy, A., Kushta, J., Lohmann, U., Mahura, A., Manders-Groot, A., Maurizi, A., Moussiopoulos, N., Rao, S. T., Savage, N., Seigneur, C., Sokhi, R. S., Solazzo, E., Solomos, S., Sørensen, B., Tsegas, G., Vignati, E., Vogel, B., and Zhang, Y.: Online coupled regional meteorology chemistry models in Europe: current status and prospects, *Atmos. Chem. Phys.*, 14, 317–398, doi:10.5194/acp-14-317-2014, 2014.
- Bangert, M., Nenes, A., Vogel, B., Vogel, H., Barahona, D., Karydis, V. A., Kumar, P., Kottmeier, C., and Blahak, U.: Saharan dust event impacts on cloud formation and radiation over Western Europe, *Atmos. Chem. Phys.*, 12, 4045–4063, doi:10.5194/acp-12-4045-2012, 2012.
- Bechtold, P., Köhler, M., Jung, T., Doblas-Reyes, F., Leutbecher, M. J. Rodwell, F. Vitart, and Balsamo, G.: Advances in simulating atmospheric variability with the ecmwf model: from synoptic to decadal time-scales, *Q. J. Roy. Meteor. Soc.*, 134, 1337–1351, 2008.
- Binkowski, F. S. and Shankar, U.: The regional particulate matter model: 1. Model description and preliminary results, *J. Geophys. Res.-Atmos.*, 100, 26191–26209, 1995.
- Chapman, E. G., Gustafson Jr., W. I., Easter, R. C., Barnard, J. C., Ghan, S. J., Pekour, M. S., and Fast, J. D.: Coupling aerosol-cloud-radiative processes in the WRF-Chem model: Investigating the radiative impact of elevated point sources, *Atmos. Chem. Phys.*, 9, 945–964, doi:10.5194/acp-9-945-2009, 2009.
- Colella, P. and Woodward, P. R.: The piecewise parabolic method (ppm) for gas-dynamical simulations, *J. Comput. Phys.*, 54, 174–201, 1984.
- Dee, D. P., Uppala, S. M., Simmons, A. J., Berrisford, P., Poli, P., Kobayashi, S., Andrae, U., Balsameda, M. A., Balsamo, G., Bauer, P., Bechtold, P., Beljaars, A. C. M., van de Berg, L., Bidlot, J., Bormann, N., Delsol, C., Dragani, R., Fuentes, M., Geer, A. J., Haimberger, L., Healy, S. B., Hersbach, H., Holm, E. V., Isaksen, L., Kallberg, P., Koehler, M., Matricardi, M., McNally, A. P., Monge-Sanz, B. M., Morcrette, J. -J., Park, B. -K., Peubey, C., de Rosnay, P., Tavolato, C., Thepaut, J. -N., and Vitart, F.: The era-interim reanalysis: configuration and performance of the data assimilation system, *Q. J. Roy. Meteor. Soc.*, 137, 553–597, 2011.
- Easter, R. C.: Two modified versions of Bott's positive-definite numerical advection scheme, *Mon. Weather Rev.*, 121, 297–304, 1993.
- Emeis, S., Forkel, R., Junkermann, W., Schäfer, K., Flentje, H., Gilge, S., Fricke, W., Wiegner, M., Freudenthaler, V., Groß, S., Ries, L., Meinhardt, F., Birmili, W., Münkel, C., Obleitner, F., and

- Suppan, P.: Measurement and simulation of the 16/17 April 2010 Eyjafjallajökull volcanic ash layer dispersion in the northern Alpine region, *Atmos. Chem. Phys.*, 11, 2689–2701, doi:10.5194/acp-11-2689-2011, 2011.
- Gassmann, A. and Herzog, H.-J.: Towards a consistent numerical compressible non-hydrostatic model using generalized hamiltonian tools, *Q. J. Roy. Meteor. Soc.*, 134, 1597–1613, 2008.
- Gasteiger, J., Groß, S., Freudenthaler, V., and Wiegner, M.: Volcanic ash from Iceland over Munich: mass concentration retrieved from ground-based remote sensing measurements, *Atmos. Chem. Phys.*, 11, 2209–2223, doi:10.5194/acp-11-2209-2011, 2011.
- Grythe, H., Ström, J., Krejci, R., Quinn, P., and Stohl, A.: A review of sea-spray aerosol source functions using a large global set of sea salt aerosol concentration measurements, *Atmos. Chem. Phys.*, 14, 1277–1297, doi:10.5194/acp-14-1277-2014, 2014.
- Jöckel, P., Tost, H., Pozzer, A., Brühl, C., Buchholz, J., Ganzeveld, L., Hoor, P., Kerkweg, A., Lawrence, M. G., Sander, R., Steil, B., Stiller, G., Tanarhte, M., Taraborrelli, D., van Aardenne, J., and Lelieveld, J.: The atmospheric chemistry general circulation model ECHAM5/MESSy1: consistent simulation of ozone from the surface to the mesosphere, *Atmos. Chem. Phys.*, 6, 5067–5104, doi:10.5194/acp-6-5067-2006, 2006.
- Jöckel, P., Kerkweg, A., Pozzer, A., Sander, R., Tost, H., Riede, H., Baumgaertner, A., Gromov, S., and Kern, B.: Development cycle 2 of the Modular Earth Submodel System (MESSy2), *Geosci. Model Dev.*, 3, 717–752, doi:10.5194/gmd-3-717-2010, 2010.
- Kerkweg, A., Jöckel, P., Warwick, N., Gebhardt, S., Brenninkmeijer, C. A. M., and Lelieveld, J.: Consistent simulation of bromine chemistry from the marine boundary layer to the stratosphere – Part 2: Bromocarbons, *Atmos. Chem. Phys.*, 8, 5919–5939, doi:10.5194/acp-8-5919-2008, 2008.
- Kunz, A., Pan, L. L., Konopka, P., Kinnison, D. E., and Tilmes, S.: Chemical and dynamical discontinuity at the extratropical tropopause based on start08 and waccm analyses, *J. Geophys. Res.-Atmos.*, 116, D24302, doi:10.1029/2011JD016686, 2011.
- Lauritzen, P. H., Erath, C., and Mittal, R.: On simplifying “incremental remap”-based transport schemes, *J. Comput. Phys.*, 230, 7957–7963, 2011.
- Lauritzen, P. H., Ullrich, P. A., Jablonowski, C., Bosler, P. A., Calhoun, D., Conley, A. J., Enomoto, T., Dong, L., Dubey, S., Guba, O., Hansen, A. B., Kaas, E., Kent, J., Lamarque, J.-F., Prather, M. J., Reinert, D., Shashkin, V. V., Skamarock, W. C., Sørensen, B., Taylor, M. A., and Tolstykh, M. A.: A standard test case suite for two-dimensional linear transport on the sphere: results from a collection of state-of-the-art schemes, *Geosci. Model Dev.*, 7, 105–145, doi:10.5194/gmd-7-105-2014, 2014.

- Liang, Q., Stolarski, R. S., Kawa, S. R., Nielsen, J. E., Douglass, A. R., Rodriguez, J. M., Blake, D. R., Atlas, E. L., and Ott, L. E.: Finding the missing stratospheric Br_y : a global modeling study of CHBr_3 and CH_2Br_2 , *Atmos. Chem. Phys.*, 10, 2269–2286, doi:10.5194/acp-10-2269-2010, 2010.
- Lundgren, K., Vogel, B., Vogel, H. and Kottmeier, C.: Direct radiative effects of sea salt for the mediterranean region under conditions of low to moderate wind speeds, *J. Geophys. Res.-Atmos.*, 118, 1906–1923, 2013.
- Majewski, D., Liermann, D., Prohl, P., Ritter, B., Buchhold, M., Hanisch, T., Paul, G., Wergen, W., and Baumgardner, J.: The operational global icosahedral-hexagonal gridpoint model gme: description and high-resolution tests, *Mon. Weather Rev.*, 130, 319–338, 2002.
- Mårtensson, E., Nilsson, E., de Leeuw, G., Cohen, L., and Hansson, H.-C.: Laboratory simulations and parameterization of the primary marine aerosol production, *J. Geophys. Res.-Atmos.*, 108, 4297, doi:10.1029/2002JD002263, 2003.
- Mastin, L. G., Guffanti, M., Servranckx, R., Webley, P., Barsotti, S., Dean, K., Durant, A., Ewert, J. W., Neri, A., Rose, W. I., Schneider, D., Siebert, L., Stunder, B., Swanson, G., Tupper, A., Volentik, A., and Waythomas, C. F.: A multidisciplinary effort to assign realistic source parameters to models of volcanic ash-cloud transport and dispersion during eruptions, *J. Volcanol. Geoth. Res.*, 186, 10–21, 2009.
- Miura, H.: An upwind-biased conservative advection scheme for spherical hexagonal-pentagonal grids, *Mon. Weather Rev.*, 135, 4038–4044, 2007.
- Monahan, E. C., Spiel, D. E., and Davidson, K. L.: A model of marine aerosol generation via whitecaps and wave disruption, in: *Oceanic Whitecaps*, Springer, 167–174, 1986.
- Ollivier-Gooch, C. and van Altena, M. : A high-order-accurate unstructured mesh finite-volume scheme for the advection-diffusion equation, *J. Comput. Phys.*, 181, 729–752, 2002.
- Ovadnevaite, J., Manders, A., de Leeuw, G., Ceburnis, D., Monahan, C., Partanen, A.-I., Korhonen, H., and O'Dowd, C. D.: A sea spray aerosol flux parameterization encapsulating wave state, *Atmos. Chem. Phys.*, 14, 1837–1852, doi:10.5194/acp-14-1837-2014, 2014.
- Pappalardo, G., Mona, L., D'Amico, G., Wandinger, U., Adam, M., Amodeo, A., Ansmann, A., Apituley, A., Alados Arboledas, L., Balis, D., Boselli, A., Bravo-Aranda, J. A., Chaikovskiy, A., Comeron, A., Cuesta, J., De Tomasi, F., Freudenthaler, V., Gausa, M., Giannakaki, E., Giehl, H., Giunta, A., Grigorov, I., Groß, S., Haefelin, M., Hiebsch, A., Iarlori, M., Lange, D., Linné, H., Madonna, F., Mattis, I., Mamouri, R.-E., McAuliffe, M. A. P., Mitev, V., Molero, F., Navas-Guzman, F., Nicolae, D., Papayannis, A., Perrone, M. R., Pietras, C., Pietruczuk, A., Pisani, G., Preißler, J., Pujadas, M., Rizi, V., Ruth, A. A., Schmidt, J., Schnell, F., Seifert, P., Serikov, I.,

- Sicard, M., Simeonov, V., Spinelli, N., Stebel, K., Tesche, M., Trickl, T., Wang, X., Wagner, F., Wiegner, M., and Wilson, K. M.: Four-dimensional distribution of the 2010 Eyjafjallajökull volcanic cloud over Europe observed by EARLINET, *Atmos. Chem. Phys.*, 13, 4429–4450, doi:10.5194/acp-13-4429-2013, 2013.
- Pozzoli, L., I. Bey, S. Rast, Schultz, M. G., P. Stier, and Feichter, J.: Trace gas and aerosol interactions in the fully coupled model of aerosol-chemistry-climate echam5-hammoz: 1. Model description and insights from the spring 2001 trace-p experiment, *J. Geophys. Res.-Atmos.*, 113, D07308, doi:10.1029/2007JD009007, 2008a.
- Pozzoli, L., Bey, I., Rast, S., Schultz, M. G., Stier, P., and Feichter, J.: Trace gas and aerosol interactions in the fully coupled model of aerosol-chemistry-climate echam5-hammoz: 2. impact of heterogeneous chemistry on the global aerosol distributions, *J. Geophys. Res.-Atmos.*, 113, D07309, doi:10.1029/2007JD009008, 2008b.
- Raschendorfer, M.: The new turbulence parameterization of Im, *COSMO Newsletter*, 1, 89–97, available at: <http://www.cosmo-model.org> (last access: 20 January 2015), 2001.
- Rieger, D., Bangert, M., Kottmeier, C., Vogel, H., and Vogel, B.: Impact of aerosol on post-frontal convective clouds over germany, *Tellus B*, 66, 22528, doi:10.3402/tellusb.v66.22528, 2014
- Roeckner, E., Brokopf, R., Esch, M., Giorgetta, M., Hagemann, S., Kornblueh, L., Manzini, E., Schlese, U., and Schulzweida, U.: Sensitivity of simulated climate to horizontal and vertical resolution in the echam5 atmosphere model, *J. Climate*, 19, 3771–3791, 2006.
- Sala, S., Bönisch, H., Keber, T., Oram, D. E., Mills, G., and Engel, A.: Deriving an atmospheric budget of total organic bromine using airborne in situ measurements from the western Pacific area during SHIVA, *Atmos. Chem. Phys.*, 14, 6903–6923, doi:10.5194/acp-14-6903-2014, 2014.
- Schumann, U., Weinzierl, B., Reitebuch, O., Schlager, H., Minikin, A., Forster, C., Baumann, R., Sailer, T., Graf, K., Mannstein, H., Voigt, C., Rahm, S., Simmet, R., Scheibe, M., Lichtenstern, M., Stock, P., Rüba, H., Schäuble, D., Tafferner, A., Rautenhaus, M., Gerz, T., Ziereis, H., Krautstrunk, M., Mallaun, C., Gayet, J.-F., Lieke, K., Kandler, K., Ebert, M., Weinbruch, S., Stohl, A., Gasteiger, J., Groß, S., Freudenthaler, V., Wiegner, M., Ansmann, A., Tesche, M., Olafsson, H., and Sturm, K.: Airborne observations of the Eyjafjalla volcano ash cloud over Europe during air space closure in April and May 2010, *Atmos. Chem. Phys.*, 11, 2245–2279, doi:10.5194/acp-11-2245-2011, 2011.
- Seinfeld, J. H. and Pandis, S. N.: *Atmospheric Chemistry and Physics: From Air Pollution to Climate Change*, John Wiley & Sons., 2006.

- Skamarock, W. C.: Positive-definite and monotonic limiters for unrestricted-time-step transport schemes, *Mon. Weather Rev.*, 134, 2241–2250, 2006.
- Smith, A. K., Garcia, R. R., Marsh, D. R., and Richter, J. H.: Waccm simulations of the mean circulation and trace species transport in the winter mesosphere, *J. Geophys. Res.-Atmos.*, 116, D20115, doi:10.1029/2011JD016083, 2011.
- Smith, M., Park, P. and Consterdine, I.: Marine aerosol concentrations and estimated fluxes over the sea, *Q. J. Roy. Meteor. Soc.*, 119, 809–824, 1993.
- Spada, M., Jorba, O., Pérez García-Pando, C., Janjic, Z., and Baldasano, J. M.: Modeling and evaluation of the global sea-salt aerosol distribution: sensitivity to size-resolved and sea-surface temperature dependent emission schemes, *Atmos. Chem. Phys.*, 13, 11735–11755, doi:10.5194/acp-13-11735-2013, 2013.
- Stevens, B., Giorgetta, M., Esch, M., Mauritsen, T., Crueger, T., Rast, S., Salzmann, M., Schmidt, H., Bader, J., Block, K., Brokopf, R., Fast, I., Kinne, S., Kornblueh, L., Lohmann, U., Pincus, R., Reichler, T., and Roeckner, E.: Atmospheric component of the mpi-m earth system model: Echem6, *J. Adv. Model. Earth Syst.*, 5, 146–172, 2013.
- Stohl, A., Prata, A. J., Eckhardt, S., Clarisse, L., Durant, A., Henne, S., Kristiansen, N. I., Minikin, A., Schumann, U., Seibert, P., Stebel, K., Thomas, H. E., Thorsteinsson, T., Tørseth, K., and Weinzierl, B.: Determination of time- and height-resolved volcanic ash emissions and their use for quantitative ash dispersion modeling: the 2010 Eyjafjallajökull eruption, *Atmos. Chem. Phys.*, 11, 4333–4351, doi:10.5194/acp-11-4333-2011, 2011.
- Vogel, B., Vogel, H., Bäumer, D., Bangert, M., Lundgren, K., Rinke, R., and Stanelle, T.: The comprehensive model system COSMO-ART – Radiative impact of aerosol on the state of the atmosphere on the regional scale, *Atmos. Chem. Phys.*, 9, 8661–8680, doi:10.5194/acp-9-8661-2009, 2009.
- Vogel, H., Förstner, J., Vogel, B., Hanisch, T., Mühr, B., Schättler, U., and Schäd, T.: Time-lagged ensemble simulations of the dispersion of the Eyjafjallajökull plume over Europe with COSMO-ART, *Atmos. Chem. Phys.*, 14, 7837–7845, doi:10.5194/acp-14-7837-2014, 2014.
- Wan, H., Giorgetta, M. A., Zängl, G., Restelli, M., Majewski, D., Bonaventura, L., Fröhlich, K., Reinert, D., Rípodas, P., Kornblueh, L., and Förstner, J.: The ICON-1.2 hydrostatic atmospheric dynamical core on triangular grids – Part 1: Formulation and performance of the baseline version, *Geosci. Model Dev.*, 6, 735–763, doi:10.5194/gmd-6-735-2013, 2013.
- Wisher, A., Oram, D. E., Laube, J. C., Mills, G. P., van Velthoven, P., Zahn, A., and Brenninkmeijer, C. A. M.: Very short-lived bromomethanes measured by the CARIBIC observatory over the

North Atlantic, Africa and Southeast Asia during 2009–2013, *Atmos. Chem. Phys.*, 14, 3557–3570, doi:10.5194/acp-14-3557-2014, 2014.

[Witham, C., Webster, H., Hort, M., Jones, A., and Thomson, D.: Modelling concentrations of volcanic ash encountered by aircraft in past eruptions, *Atmos. Environ.*, 48, 219–229, doi:10.1016/j.atmosenv.2011.06.073, 2012.](#)

World Meteorological Organization: Scientific assessment of ozone depletion: 2010. Global Ozone Research and Monitoring Project – Report No. 52, Geneva, Switzerland, 2011.

Zängl, G., Reinert, D., Rípodas, P., and Baldauf, M.: The ICON (ICOsahedral Non-hydrostatic) modelling framework of DWD and MPI-M: description of the non-hydrostatic dynamical core, *Q. J. Roy. Meteor. Soc.*, doi:10.1002/qj.2378, online first, 2014.

Table 1. Parameters for the log-normally distributed aerosol species. $\bar{d}_{0,l,E}$ ($\bar{d}_{3,l,E}$) is the median diameter of the specific number (mass) emission of mode l . The standard deviation of mode l , σ_l , is held constant for the whole simulation.

	Sea salt aerosol		
	Mode A	Mode B	Mode C
$\bar{d}_{0,l,E}$ [μm]	0.2	2.0	12.0
$\bar{d}_{3,l,E}$ [μm]	0.69	8.45	27.93
σ_l	1.9	2.0	1.7

Table 2. Chemical lifetime and boundary condition of CHBr_3 and CH_2Br_2 in the idealized chemical tracer experiment.

Substance	Chemical lifetime	Boundary condition ($p \geq 950$ hPa)
CHBr_3	24 days	1.6 pptv
CH_2Br_2	123 days	1.1 pptv

Table 3. Size factors for the representation of volcanic ash emissions within a sectional approach. The diameters of the size bins bin centers are denoted by d_l . The distribution factors f_l are taken from Schumann et al. (2011).

d_l [μm]	1	3	5	10	15	30
f_l	0.014884	0.080372	0.186047	0.372093	0.226047	0.120558

Table 4. Annual sea salt aerosol emissions obtained within this study compared to ranges given by different reviews of existing sea salt aerosol source functions.

Study	Emission [Pg yr^{-1}]	Size Range
Grythe et al. (2014)	3–70	$< 10 \mu\text{m}$
Spada et al. (2013)	3.9–8.1	0.1– $15 \mu\text{m}$
This study	7.36	$< 10 \mu\text{m}$
This study	10.86	$< 15 \mu\text{m}$
This study total	26.0	Mode A + B + C

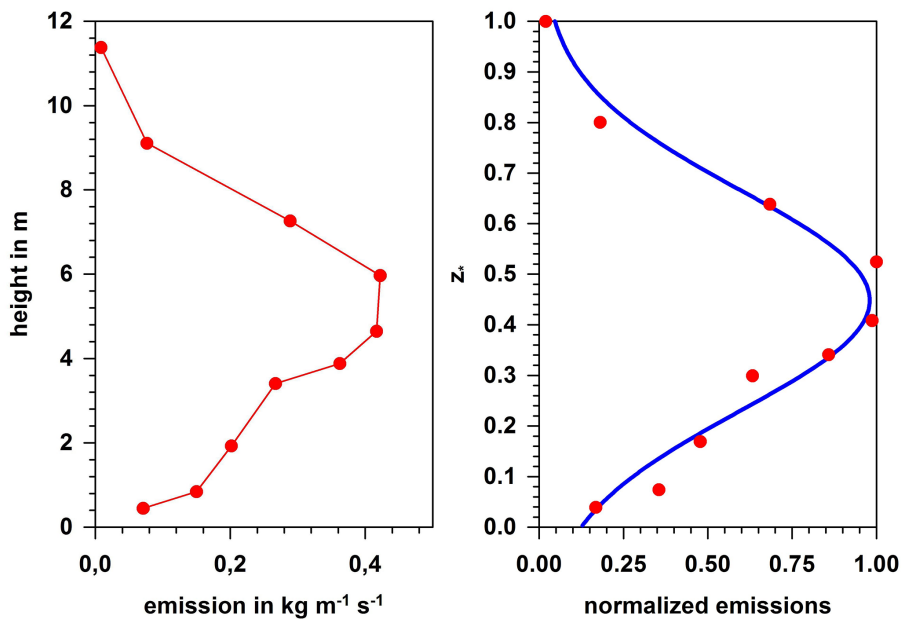


Figure 1. (a) Vertical profile of the emissions given in Stohl et al. (2011). (b) Normalized emission profiles. The blue line gives the fit with a Gaussian distribution.

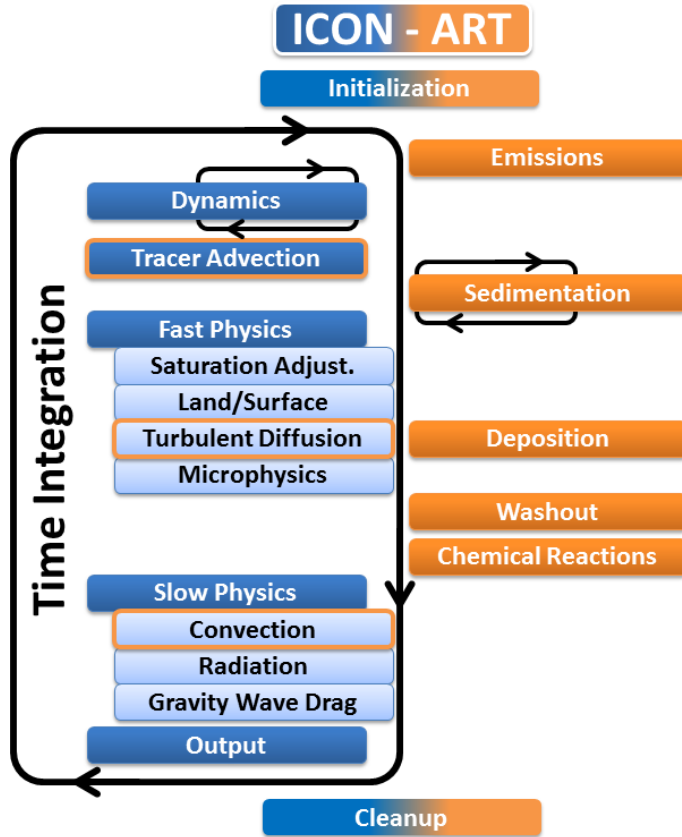


Figure 2. Schematic of the coupling of ICON-ART. The sequence in which processes of ICON are executed is illustrated by the blue boxes. Processes of ART are illustrated by the orange boxes. An orange frame around a blue box indicates, that the according code is part of the ICON tracer framework (see Sect. 2) but ART tracers are treated inside this framework. The black circle indicates the sequence of the time integration.

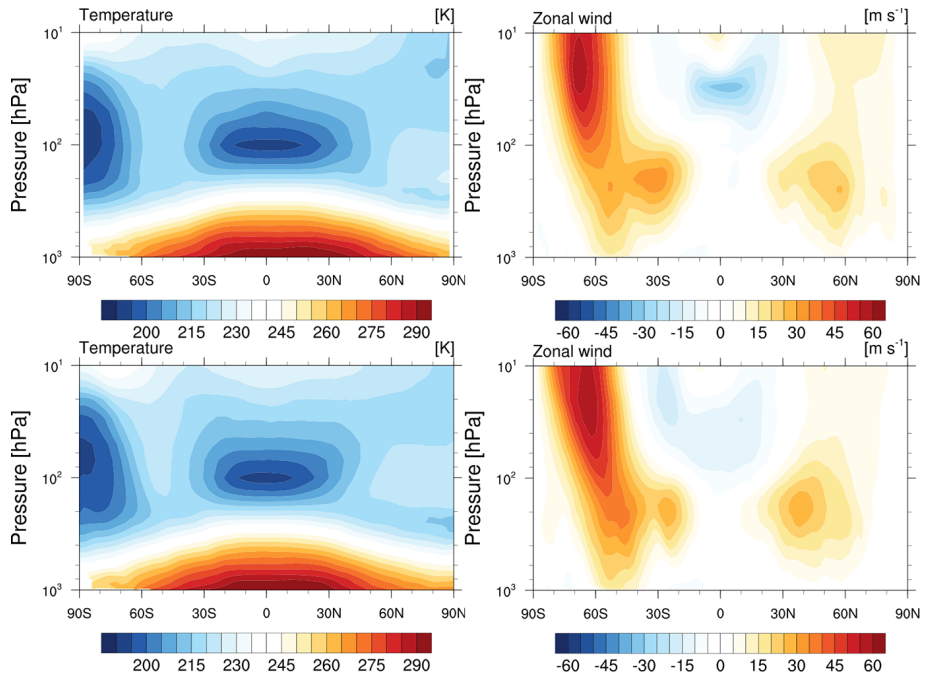


Figure 3. Zonal mean of temperature (left column) and zonal wind (right column) at 1 October 2012 as given by ERA-Interim reanalysis (top row) and ICON-ART (bottom row).

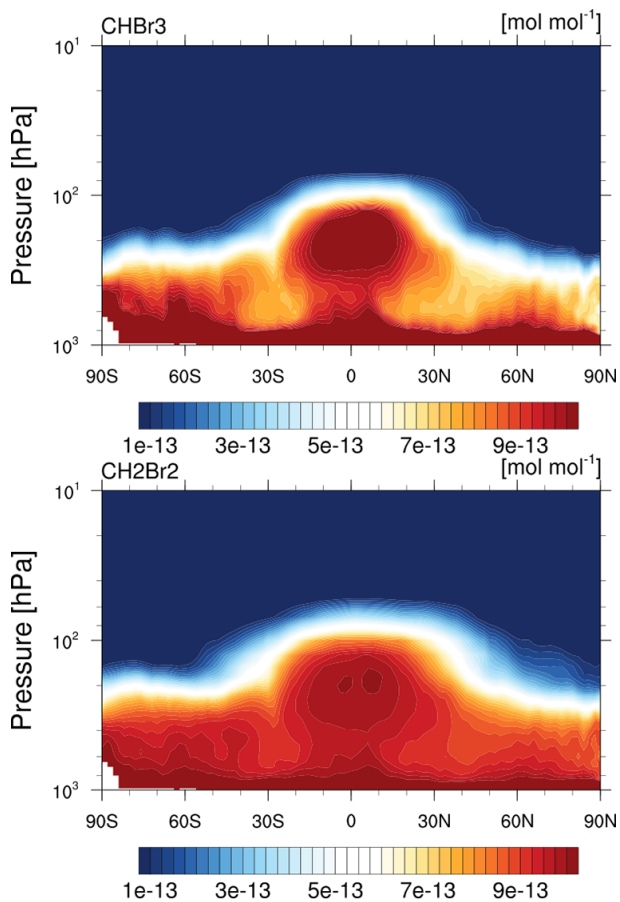


Figure 4. Simulated zonal mean of CHBr_3 (top) and CH_2Br_2 (bottom) volume mixing ratio at 1 October 2012.

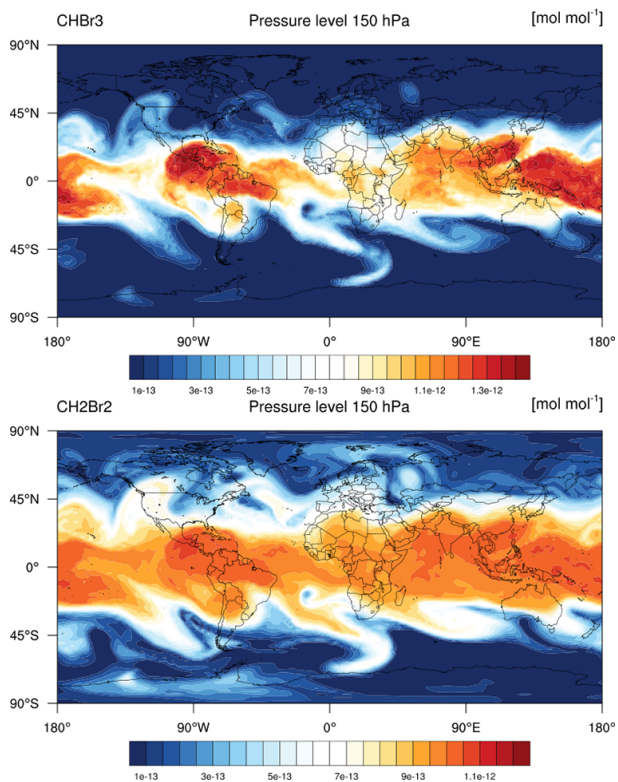


Figure 5. Simulated distribution of CHBr_3 (top) and CH_2Br_2 (bottom) volume mixing ratio at 150 hPa at 1 October 2012. Please note the different colour scales.

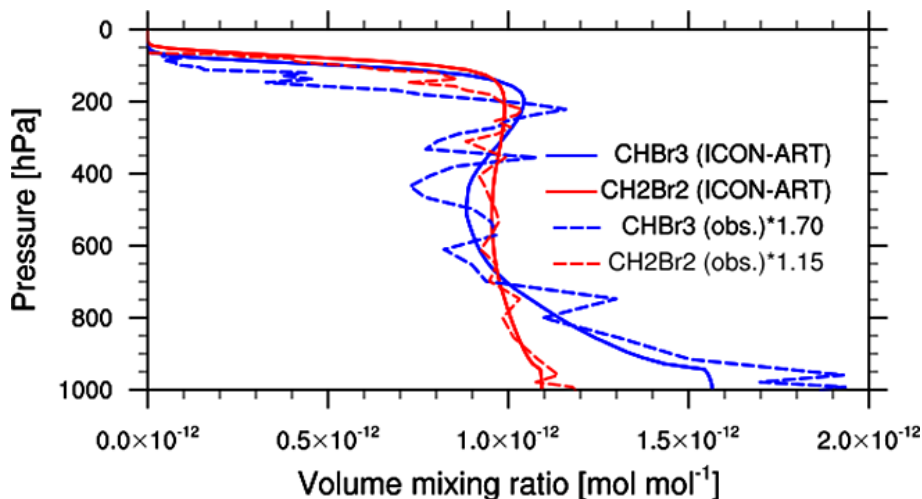


Figure 6. Mean vertical profiles between 20° S and 20° N of CHBr₃ (red) and CH₂Br₂ (blue) volume mixing ratio simulated by ICON-ART for 1 October 2012 (solid lines) and observed during different campaigns (dashed lines). Please note that, the observed mean tropical profiles have been multiplied by 1.70 for CHBr₃ and 1.15 for CH₂Br₂. See text for more details.

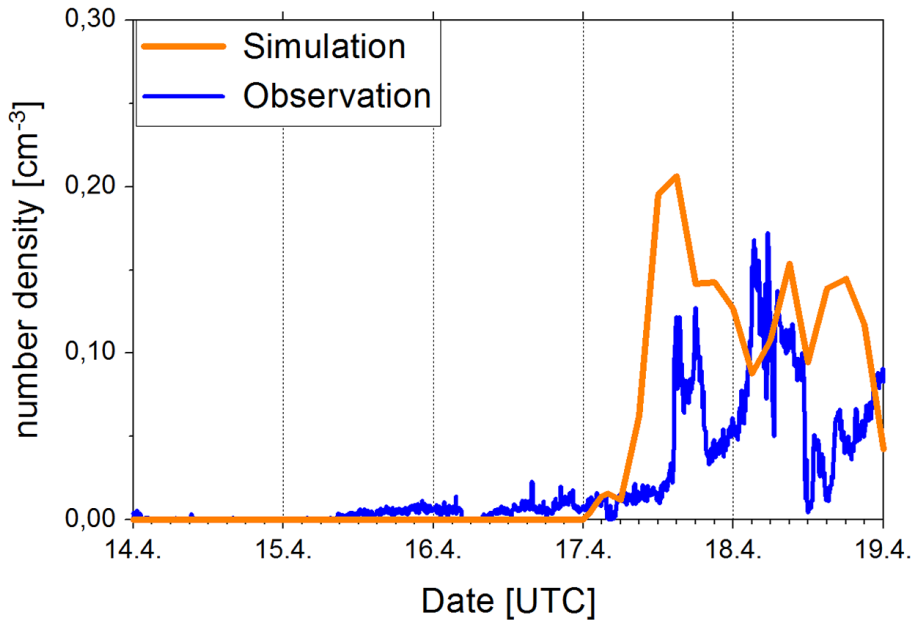


Figure 7. Simulated and observed number concentrations of particles with a diameter of $3\ \mu\text{m}$ at Hohenpeissenberg, Germany.

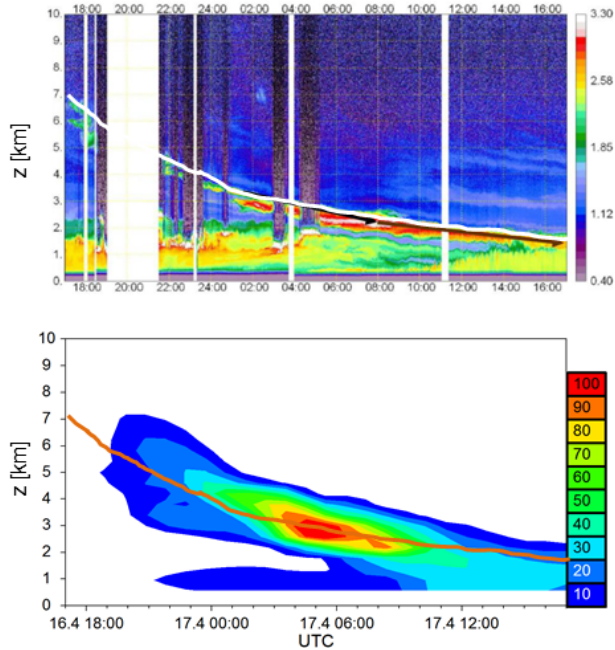


Figure 8. Top: logarithm of range-corrected signal of MULIS at $\lambda = 1064$ nm at Maisach from 16 April 2010 17:00 UTC to 17 April 2010 17:00 UTC and from 0 to 10 km above ground; white areas denote periods without measurements (taken from Gasteiger et al., 2010). The thick white line shows the hand drawn border of the top of the ash plume based on the observations. Bottom: simulated cross sections in $\mu\text{m}^{-2} \text{m}^{-3}$ for the size bins 1, 3, 5, 10, and 15 μm . The brownish line is a copy of the white line drawn in the measurements into the graph of the model results.

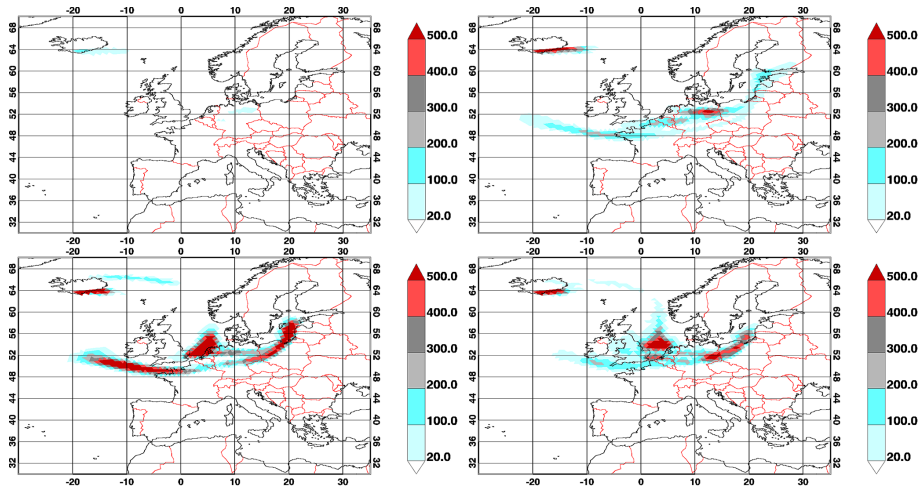


Figure 9. Horizontal distribution of the volcanic ash concentrations in $\mu\text{g m}^{-3}$ at 16 April 2010, 12:00 UTC. Top left: at about flight level F350 (10 668 m). Top right: at about flight level F200 (6096 m). Bottom left: at about 2300 m. Bottom right: at about 1160 m.

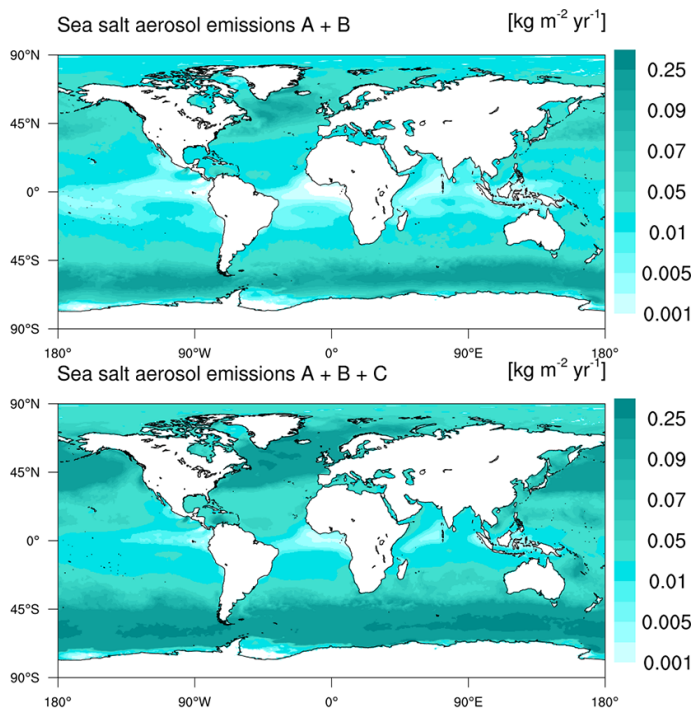


Figure 10. Horizontal distribution of the mass production rate of sea salt aerosol in $\text{kg m}^{-2} \text{yr}^{-1}$. Top: only modes A and B are considered to be comparable to Grythe et al. (2014). Bottom: sum of all three modes, A, B and C.