

[Paper #gmd-2015-68]

## Response to reviewers' comments on "Integration of nitrogen dynamics into the Noah-MP land model v1.1 for climate and environmental predictions"

X. Cai, Z.-L. Yang, J. B. Fisher, X. Zhang, M. Barlage, F. Chen

Thank you to the editor and the two reviewers for their insightful comments. We have incorporated revisions to address the suggestions as best as possible and hope that our changes will address all concerns.

The comments from the reviewers are pasted below (in **black font**) with our responses inline (in **blue font**).

### I. Response to Anonymous Referee #1

This manuscript presents the incorporation of nitrogen processes into Noah-MP by leveraging the process descriptions from the FUN and SWAT models respectively. The topic is important given the role of Noah-MP as the next generation land component of WRF. The strategy, i.e., learning/adopting from FUN for the plant nitrogen dynamics and from SWAT for soil nitrogen dynamics, is overall appropriate. However, I have a few concerns specified as below, and hence recommend a moderate revision before possible acceptance for publication.

1. Lack of a clear parameterization strategy. The authors should provide a concentrated description of how they determine the hydrological, and plant and soil nitrogen parameters for this study site. Moreover, a land model such as Noah-MP is usually expected to be applied over large scales, say regional for example. How would the authors envision the parameters used, hence the understanding gained at this specific site, to be generalized to other places? Some discussion in the end along this line would be useful since this study is motivated to provide simultaneous predictions of weather and environment, both of which are generally large-scale in nature.

Re: We appreciate the insightful comment. Regarding the parameters, our strategy is to minimize changing them from the default values that were documented in Fisher et al. (2010) regarding FUN and Neitsch et al. (2011) regarding SWAT. As both of these models have been applied to several large scale studies, we assumed that these default values are applicable for general conditions. Indeed, for those parameters from FUN, we used all default vales. At the same time, we attempted to use some parameters that were measured at the site to best represent the location. During the modeling process, we also found some very sensitive parameters that have large impacts on the model results, such as  $\gamma_{sw,thr}$  (threshold value of soil water factor for denitrification to occur),  $\beta_{min}$  (rate coefficient for mineralization of the humic organic nitrogen), and  $\beta_{rsd}$  (rate coefficient for mineralization of the fresh organic nitrogen in residue). We adjusted these parameters to match observations. We have modified the text in the manuscript accordingly to clarify the parameterization strategy (section 2.2).

We developed the model for eventual extrapolation to large regions. For instance, we realized that the observed nitrogen fertilizer application data used in this study, which is important to the nitrogen dynamics, may not be available when we apply the model to large regions, especially the fertilizer

application dates. Therefore, we investigated this issue (Figure 8 in the manuscript) and recommended that when we apply the model to a region, a simple survey of the approximate fertilizer application dates is needed (see section 3.7).

2. Systematic bias in the model simulated soil moisture, as clearly shown in Figure 2. Given that nitrate is highly soluble and highly affected by soil water dynamics, one would infer that this systematic bias of soil moisture simulation may propagate to the nitrogen simulation. It appears to me that Noah-MP in this study is systematically underestimating the variation range of the soil moisture. This is very likely due to some deficiencies in the hydrology component, being the runoff scheme or parameters. Which TOPMODEL scheme is used in this study, the one with groundwater or with an equilibrium water table? Is the groundwater level at this site shallow enough so that all TOPMODEL assumptions hold? Have you tried to calibrate/adjust the hydrology parameters for this site? If currently Noah-MP is not hooked up with an automatic calibration package, some manual calibration will be feasible at least and just enough.

Re: As suggested by the reviewer, we have tried to manually calibrate many soil hydrology related parameters including eight out of ten soil parameters. We were able to reduce or increase the mean of the simulated soil moisture, which is unnecessary because it is already very close to observation. As an example shown in Figure 1, a higher Clapp-Hornberger  $b$  parameter for soil produced higher soil moisture and thus lower soil nitrate concentration and nitrate leaching. However we could not make much improvement in terms of increasing the variation range. But the observed large variation range may also include systematic errors, as we can see from the large spread of the observed range defined by the six replicates. Due to this large uncertainty, we cannot totally trust the observation. Anyway, we thank the reviewer for pointing out this issue that we did not pay enough attention to. We will check if this issue persists in our upcoming regional or global model evaluation.

This study uses the TOPMODEL with groundwater scheme. The simulated water table depth ranges from 2.24 m to 2.68 m, which can meet the TOPMODEL assumptions.

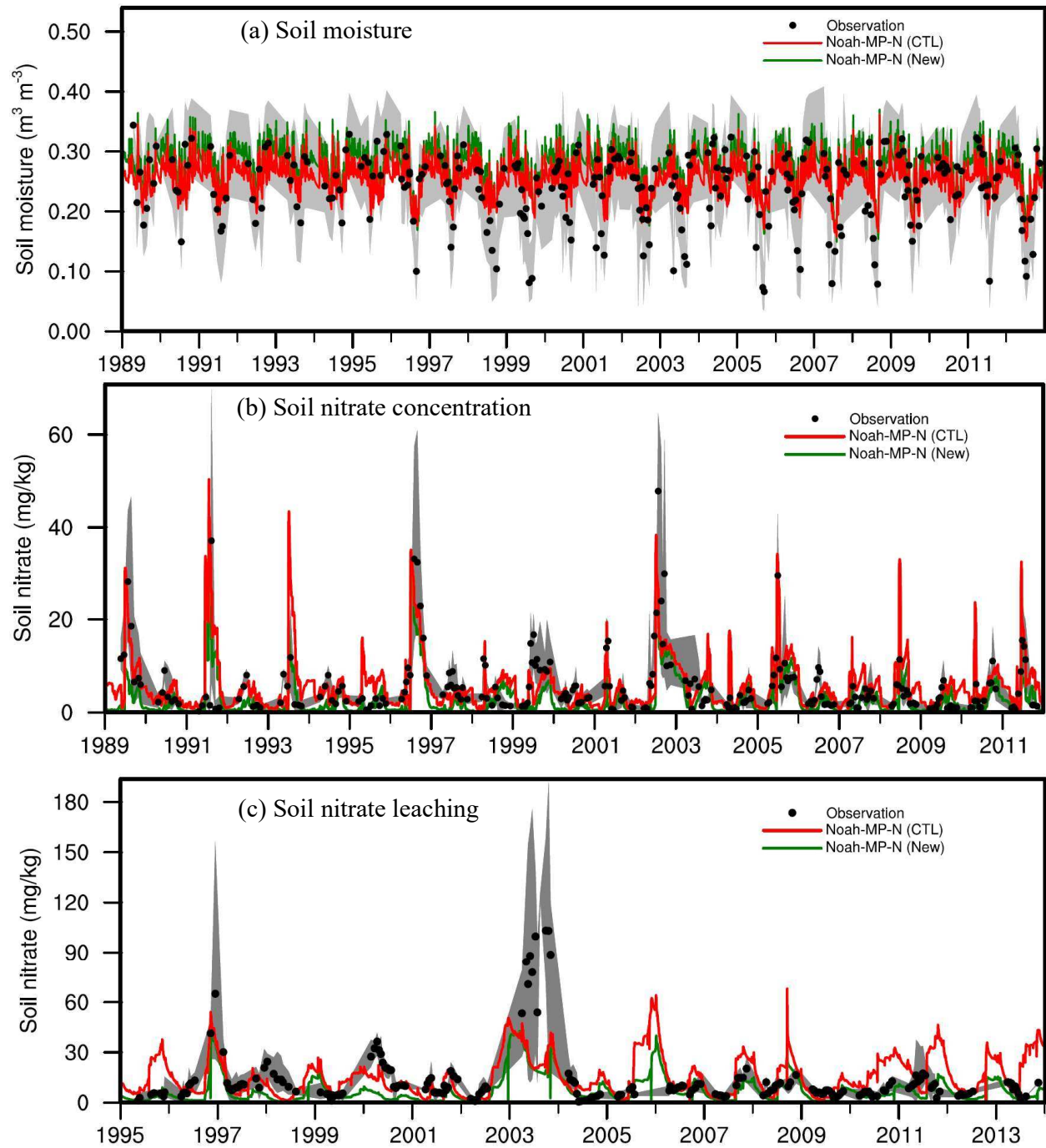


Figure 1 Observed and model simulated (a) volumetric soil moisture, (b) soil nitrate concentration, and (c) soil nitrate leaching. CTL: the default model (with N dynamics) setup in the original manuscript; New: an experiment that changes the soil parameter B from the default value (4.74) to 6.74 and everything else is the same as CTL.

3. Inconsistent treatment of tillage between the water and nitrogen, as indicated at Line8-10, Page 4127. The authors need to carefully evaluate the possible bias in soil moisture simulation and the subsequent

nitrate simulation, then decide whether it is appropriate to consider the tillage effects in nitrogen redistribution only but not in water redistribution.

Re: From Figure 1, we can see that soil moisture has influence on nitrogen simulation. For nitrogen model implementation, we separate a 10 mm surface layer from the first soil layer (surface to 100 mm deep) in Noah-MP to better represent the soil properties on soil surface (high organic content). We currently assumed that tillage can only reach 100 mm which is just the depth of the first soil layer in Noah-MP. Within this surface layer, there is no redistribution of N, as the soil moisture content at different depth is considered the same within a soil layer in the model. In other words, one purpose of tillage is to bring the surface residue down into lower soil layers; while this is not necessary for water.

Actually, to our best knowledge, the SWAT model does not consider the redistribution of soil water due to tillage either, probably because of the same reason. While it is possible that we can add a surface layer for the hydrology part as well, our intention is not to change the original Noah-MP structure. We thank the reviewer for the good comment. We will have a more comprehensive investigation on this issue and make necessary changes in our future model development.

---

## II. Response to Anonymous Referee #2

The main task of this paper is to improve the N cycling processes represented in large-scale land surface model Noah-MP by integrating necessary processes in FUN for plant N uptake and fixation and processes in SWAT for soil N cycling. Such effort can lead to new contribution to improvement of the land surface modeling, especially for N cycle application and is of great importance to model community of climate, environment as well as biosphere.

My main concern is as following:

1. There may be systematic error in soil moisture modelling in your updated Noah-MP. As I noticed that the model generally overestimated and underestimated the soil moisture at low- and high- soil moisture cases, respectively, despite the observed outliers. Another issue in soil moisture modelling is that the tillage did not change the water dynamics in soil. However, you stated that you considered the redistribution of N in the submodel (SWAT). The question is how is the redistribution of N represented in SWAT? Does not it couple to soil water dynamics in SWAT or to other processes? You should explain this point a little bit more!

Re: We appreciate the good comment. There is a nice example in Neitsch et al. (2011) showing how tillage is represented in SWAT as below.

“The mixing efficiency of the tillage implement defines the fraction of a residue/nutrient/pesticide/bacteria pool in each soil layer that is redistributed through the depth of soil that is mixed by the implement. To illustrate the redistribution of constituents in the soil, assume a soil profile has the following distribution of nitrate.

Layer #	Depth of Layer	NO <sub>3</sub> Content
surface layer	0-10 mm	50 kg/ha
1	10-100 mm	25 kg/ha
2	100-400 mm	20 kg/ha
3	400-1050 mm	10 kg/ha
4	1050-2000 mm	10 kg/ha

If this soil is tilled with a field cultivator, the soil will be mixed to a depth of 100 mm with 30% efficiency. The change in the distribution of nitrate in the soil is:

Layer #	Depth of Layer	Initial NO <sub>3</sub>	Unmixed NO <sub>3</sub> (70%)	Mixed NO <sub>3</sub> (30%)	Redistribution of Mixed NO <sub>3</sub>	Final NO <sub>3</sub>
surface layer	0-10 mm	50 kg/ha	35 kg/ha	15 kg/ha	22.5×10mm/100mm = 2.25 kg/ha	37.25 kg/ha
1	10-100 mm	25 kg/ha	17.5 kg/ha	7.5 kg/ha	22.5×90mm/100mm = 20.25 kg/ha	37.75 kg/ha
2	100-400 mm	20 kg/ha	20 kg/ha			20 kg/ha
3	400-1050 mm	10 kg/ha	10 kg/ha			10 kg/ha
4	1050-2000 mm	10 kg/ha	10 kg/ha			10 kg/ha
Total mixed:				22.5 kg/ha		

Because the soil is mixed to a depth of 100 mm by the implement, only the nitrate in the surface layer and layer 1 is available for redistribution.”

We have added a little bit description of the implementation of tillage in the manuscript.

To our best knowledge, the SWAT model does not consider the redistribution of soil water due to tillage either. Since tillage can only reach 100 mm which is just the depth of the first soil layer in Noah-MP, there is no redistribution of N within this surface layer. In other words, one purpose of tillage is to bring the surface residue down into lower soil layers; while this is not necessary for water. We understand that tillage can also alter the soil structure, and hence the soil hydraulic properties (e.g. porosity, hydraulic conductivity), which would affect soil water redistribution. However, this feature is not considered in this study because of the lack of data on soil hydraulic properties.

2. The effectiveness of this mode for a large-scale application. Since this model is only evaluated on one site in LTER of USA, I worry about the large-scale performance of this model. Yes, I know that the observations for N cycle components are generally limited. But I still wonder if you can get a more realistic result of NPP or NEE at other sites spanning a great climate gradient, for example, comparing to the default Noah-MP. One valuable point for your model is that the new Noah-MP model seemingly produce a more realistic interannual variation of NPP comparing to observation, whereas the default Noah-MP failed. This could be due mainly to the effects of dynamic N cycling together with the soil dynamics. I suggest to perform your model to some other sites spanning a great climate gradient to see whether you can get an improved estimation of NPP/NEE (as well as the IAV) comparing to the default one. This can partly verify that your model can be applied on a larger scale.

Re: We agree with the reviewer that more extensive tests across a gradient of sites would provide better insights into the generalization capability of the new Noah-MP. We are currently creating a 2D driver and then the model will be run and evaluated on regional or global scales.

Furthermore, we are participating in model intercomparison projects that are evaluating the new Noah-MP and other models across sites across the U.S. As noted by the reviewer, these additional sites may partially verify the generalization capability of the new Noah-MP. However, due to the lack of comprehensive observations of N dynamics, it is unclear whether N processes are well reproduced and responsible for the improved/decreased model performance in explaining NPP/NEE. Given the focus of this paper on N, we think it is more appropriate to design a rigorous plan to evaluate new Noah-MP for other sites without observations of N dynamics, and report the results in a separate paper.

In a word, I suggest a moderate revision before accept for publication on GMD.

#### **Some specific comments:**

1. Please check: "...land model..." or "...land surface model..."

Re: To be consistent, we changed all to "...land surface model..."

2. Page 4116, line 10: please give the full presentation for LSMs (i.e. Land Surface Models), because not all of the reader are familiar land surface modelling.

Re: "LSMs" was defined before the acronym was used repeatedly.

3. Page 4119, line 20: what is the BNF?

Re: It is symbiotic Biological Nitrogen Fixation. We changed it to the full form.

4. Page 4119, line 3-4, I did not find the mentioned equation (Eq.) 1-4 in your paper! Do you mean the equations in Fisher et al. (2010)? If so, please state it clearly. If not, please provide them.

Re: We meant the Eq. (3-6). We changed the sentence to “plant N uptake and fixation follows the framework of Fisher et al. (2010), which determines N acquired by plants through Eq. (13) advection (passive uptake), Eq. (4) symbiotic biological N fixation, Eq. (5) active uptake, and Eq. (26) retranslocation (resorption), (3) active uptake, and (4) symbiotic biological N fixation.”

5. Page 4120, line 5, how did you determine  $K_N$  and  $K_C$ , are they parameters? Where did you get the  $N_{leaf}$  (I mean which submodel is in charge for  $N_{leaf}$ , please clarify it)?

Re:  $k_N$  and  $k_C$  are parameters directly from Fisher et al. (2010).

$N_{leaf}$  is managed by the FUN sub-model

6. Page 4120, Eq. 7: there may be some error in the last component of this equation, please make sure you make sum from  $i = 1$  to  $N_{soil}$ , or to number of soil? I guess it should be the number of soil, but  $N_{soil}$  is the available N in specific soil layer as you explained.

Re: Yes, it is the number of soil. We changed its symbol from  $N_{soil}$  to  $n$ .

7. Page 4121, line 8, soil temperature or air temperature?

Re: We clarified this as soil temperature.

8. Page 4121, Eq. 11, what are the  $\gamma_{tmp,ly}$  and  $\gamma_{sw,ly}$ ? Are they parameters, or how do you parameterize them?

Re:  $\gamma_{tmp,ly}$  and  $\gamma_{sw,ly}$  are nutrient cycling temperature and water factors, which are calculated by Eq. (9) and Eq. (10), respectively.

9. Page 4124, where did you get the Eq. 19? How did you define the threshold for  $\gamma_{sw}$ ?

Re: We got Eq. (19) from Neitsch et al. (2011). See Eq. (10) for  $\gamma_{sw}$ .

10. In section 3.5, you mentioned that all of the fertilization activities occurred after late June. Could you please show the fertilization records for this site? To my knowledge, the fertilization is quite different for different kinds of crops; for winter wheat the fertilization should not be so late, but for summer crops it can be. Another question is that how do you represent the crop rotation?

Re: The fertilization application data are plotted in Figure 2 (or Figure 8e in the revised manuscript).

It is true that different crops have different dates of fertilizer applications. The large amounts of fertilizer applied shown in the above figure are mostly for corn.

The question on crop rotation is very important. Currently, Noah-MP does not have a crop submodel and hence cannot simulate crop rotation in the model. The crop model for Noah-MP is under development at the National Center for Atmospheric Research.



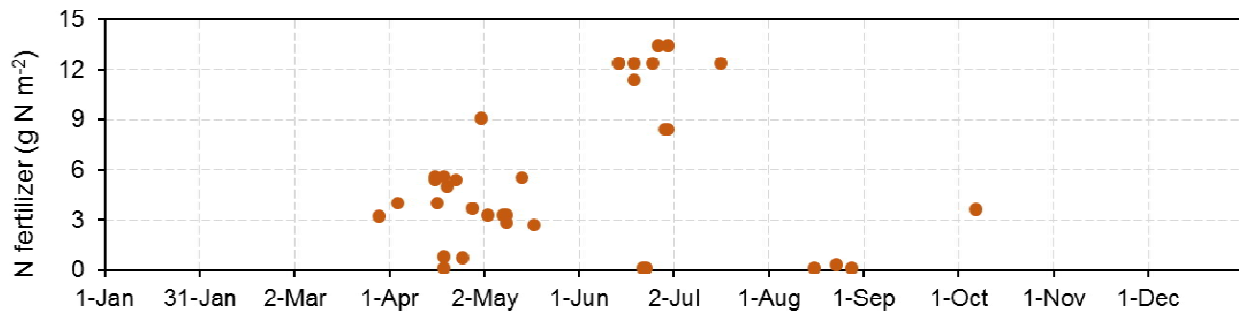


Figure 2 Actual nitrogen fertilizer application amounts and dates as recorded in the agronomic log.

11. Page 4132, line 11: with the default? Or with the observation? I did not see the default model results on figure 8.

Re: With observation (reality). We changed the wording to “real case”.

12. In figure 8, you state that the N leaching is more in default simulation that the others; did you perform the t-test? This comment is applicable to others similar comparision!

Re: The default simulation can significantly produce more N leaching than the Apr 15 experiment at 90% confidence level. However, the difference between the default and Jun 30 experiment is not significant.

13. There are few grammar errors throughout the paper.

Re: We have tried our best to correct these grammar errors. We appreciate the reviewer reading so carefully and catching the errors.

## References

- Fisher, J. B., Sitch, S., Malhi, Y., Fisher, R. A., Huntingford, C., and Tan, S. Y.: Carbon cost of plant nitrogen acquisition: A mechanistic, globally applicable model of plant nitrogen uptake, retranslocation, and fixation, *Global Biogeochem. Cy.*, 24, 2010.
- Neitsch, S. L., Arnold, J. G., Kiniry, J. R., and Williams, J. R.: Soil and Water Assessment Tool theoretical documentation version 2009, Texas Water Resources Institute, Texas A&M University, College Station, TX Technical Report No. 406, 2011.



# Integration of nitrogen dynamics into the Noah-MP land surface model v1.1 for climate and environmental predictions

X. Cai<sup>1,2</sup>, Z.-L. Yang<sup>1</sup>, J. B. Fisher<sup>2,3,4</sup>, X. Zhang<sup>45</sup>, M. Barlage<sup>56</sup>, F. Chen<sup>56</sup>

[1]{Department of Geological Sciences, The John A. and Katherine G. Jackson School of Geosciences, The University of Texas at Austin, Austin, Texas, USA}

[2]{Now at Department of Civil and Environmental Engineering, Princeton University, Princeton, New Jersey, USA}

[23]{Jet Propulsion Laboratory, California Institute of Technology, Pasadena, California, USA}

[34]{Joint Institute for Regional Earth System Science and Engineering (JIFRESSE), University of California at Los Angeles, Los Angeles, California, USA}

[45]{Joint Global Change Research Institute, Pacific Northwest National Laboratory and University of Maryland, College Park, Maryland, USA}

[56]{Research Applications Laboratory, National Center for Atmospheric Research, Boulder, Colorado, USA}

Correspondence to: Z.-L. Yang (liang@jsg.utexas.edu)

## Abstract

Climate and terrestrial biosphere models consider nitrogen an important factor in limiting plant carbon uptake, while operational environmental models view nitrogen as the leading pollutant causing eutrophication in water bodies. The community Noah land surface model with multi-parameterization options (Noah-MP) is unique in that it is the next generation land surface model for the Weather Research and Forecasting meteorological model and for the operational weather/climate models in the National Centers for Environmental Prediction. In this study, we add a capability to Noah-MP to simulate nitrogen dynamics by coupling the Fixation and Uptake of Nitrogen (FUN) plant model and the Soil and Water Assessment Tool

(SWAT) soil nitrogen dynamics. This [model development](#) incorporates FUN's state-of-the-art concept of carbon cost theory and SWAT's strength in representing the impacts of agricultural management on the nitrogen cycle. Parameterizations for direct root and mycorrhizal-associated nitrogen uptake, leaf retranslocation, and symbiotic biological nitrogen fixation are employed from FUN, while parameterizations for nitrogen mineralization, nitrification, immobilization, volatilization, atmospheric deposition, and leaching are based on SWAT. The coupled model is then evaluated at the Kellogg Biological Station—a Long-term Ecological Research site within the U.S. Corn Belt. Results show that the model performs well in capturing the major nitrogen state/flux variables (e.g., soil nitrate and nitrate leaching). Furthermore, the addition of nitrogen dynamics improves the modeling of ~~the carbon and water cycles (e.g., net primary productivity and evapotranspiration)~~. The model improvement is expected to advance the capability of Noah-MP to simultaneously predict weather and water quality in fully coupled Earth system models.

## 1 Introduction

Over the past several decades, eutrophication—high concentrations of nutrients in freshwater bodies leading to severe oxygen depletion from the resultant algal blooms—has become a worldwide problem facing river, lake, and coastal waters ([Conley et al., 2009](#); [Howarth et al., 2006](#)). As one of the greatest threats to freshwater and coastal ecosystems, eutrophic conditions lower biotic diversity, lead to hypoxia and anoxia, increase the incidence and duration of harmful algal blooms, and change ecological food webs that reduce fish production ([Diaz and Rosenberg, 2008](#); [National Research Council, 2000](#)). These eutrophic conditions are attributed to excessive fertilizer leaching in river basins ([Boesch et al., 2009](#); [Boyer et al., 2006](#)). To complicate this further, climate variation and climate change also determine the variation of hypoxia extent ([Donner and Scavia, 2007](#)): higher temperatures may extend the thermal stratification period and deepen the thermocline, thereby resulting in the upwelling of nutrients from sediment and increasing the concentration of nutrients in the bottom layer of water in lakes ([Komatsu et al., 2007](#)). Further, higher precipitation produces more runoff and very likely more nutrients are delivered to the ocean as well ([Donner and Scavia, 2007](#)). Nitrogen (N) is recognized as the leading nutrient causing eutrophication. Without human interference, N cycling is relatively slow, as most ecosystems are efficient at retaining this in-demand nutrient. N enters soil regularly either through atmospheric wet and

1 dry deposition or through atmospheric N<sub>2</sub> fixation by microorganisms (occurring mostly in  
2 legume plants). N taken up by plants is confined to relatively slow processes (e.g., growth,  
3 decay, and mineralization); in some regions or during the growing season, N may also limit  
4 plant growth, which reduces carbon sequestration over land (Fisher et al., 2012). In addition,  
5 N cycling produces nitrous oxide (N<sub>2</sub>O) which is considered one of the important greenhouse  
6 gases responsible for climate warming. These facts make the N cycle important for studying  
7 the response of the climate to the elevated greenhouse gas concentrations. With human tillage  
8 of soils, mineralization and nitrification of N is amplified, which results in the reduction of N  
9 storage in soil (Knops and Tilman, 2000; Scanlon et al., 2008). In addition, a large amount of  
10 N fertilizer is applied in specific areas within a short period of time; as a result, a massive  
11 excess of N is leached to the aquatic systems through discharge and erosion, which  
12 contributes to the eutrophication in aquatic systems..

13 Many of these N processes have been included in land surface, hydrologic, and water quality  
14 models developed particularly for environmental, climate, and agricultural applications  
15 (Bonan and Levis, 2010; Dickinson et al., 2002; Fisher et al., 2010; Kronvang et al., 2009;  
16 Schoumans et al., 2009; Thornton et al., 2007; Wang et al., 2007; Yang et al., 2009). These  
17 developments are still in their infancy, and large scale climate models lack N leaching  
18 parameterizations that are comparable to those used in water quality models. Thus, large scale  
19 models are not feasible for inherently fine-scale applications such as agricultural fertilization  
20 management and water quality prediction. Therefore, the present study improves these  
21 weaknesses by incorporating the strength of agriculture-based models into large-scale land  
22 surface models (LSMs).

23 The community Noah LSM with multi-parameterization options (Noah-MP) (Niu et al., 2011;  
24 Yang et al., 2011) is used as an exemplar of LSMs because it is the next generation LSM for  
25 the Weather Research and Forecasting (WRF) meteorological model (Rasmussen et al., 2014)  
26 and for the operational weather and climate models in the NOAA/National Centers for  
27 Environmental Prediction. Because Noah-MP has an interactive vegetation canopy option,  
28 which predicts the leaf area index (LAI) as a function of light, temperature, and soil moisture,  
29 it is logical to augment this scheme with N limitation and realistic plant N uptake and  
30 fixation. The state-of-the-art vegetation N model is the Fixation and Uptake of Nitrogen  
31 (FUN) model of Fisher et al. (2010), which is embedded into the Joint UK Land Environment  
32 Simulator (JULES) (Clark et al., 2011a) and the Community Land Model (CLM) ~~(Shi et al.,~~

~~in preparation~~] (Shi et al., in press). Modeling the impacts of agricultural management (e.g., fertilizer use) on N leaching is the strength of the Soil and Water Assessment Tool (SWAT) (Neitsch et al., 2011). Therefore, this study incorporates into Noah-MP both FUN's strength in plant N uptake and SWAT's strength in soil N cycling and agricultural management.

Our objective is to develop and utilize a land surface modeling framework for simultaneous climate (carbon) and environmental (water quality) predictions. We first describe the nitrogen dynamic model which combines equations used in FUN and SWAT. We then focus on evaluating the new integrated model at a cropland site, because fertilizer application on croplands globally contributes approximately half of the total N input to soil, with the other half by natural processes (i.e. atmospheric deposition and biological N fixation) (Fowler et al., 2013; Gruber and Galloway, 2008). Furthermore, cropland is a major source of N loading in water bodies. We evaluate the new model against observed soil moisture content, concentration of soil nitrate, concentration of nitrate leaching from soil bottom, and annual net primary productivity (NPP). We then analyze the impacts of the addition of N dynamics on the carbon and water cycles. To guide the use of this model on regional scales, we also analyze the impacts from different fertilizer application scenarios. Finally, we discuss other model behaviors, i.e., N uptake from different pathways and the major soil nitrate fluxes.

## 2 Models, Data, and Methods

### 2.1 Noah-MP

The Noah-MP model was augmented from the original Noah LSM with improved physics and multi-parameterization options (Niu et al., 2011; Yang et al., 2011), based on a state-of-the-art multiple-hypothesis framework (Clark et al., 2011b). Noah-MP provides users with multiple options for parameterization in leaf dynamics, canopy stomatal resistance, soil moisture factor for stomatal resistance, and runoff and groundwater. Until this work, Noah-MP did not include any N dynamics. The only N-related parameterization is in the calculation of the maximum rate of carboxylation ( $V_{max}$ , Eq. (1))—an important factor in estimating the total carbon assimilation (or photosynthesis) rate (Niu et al., 2011).

$$V_{\max} = V_{\max25} \frac{T_v - 25}{10} a_{v\max}^{10} f(N) f(T_v) \beta \cdot \quad (1)$$

where  $V_{\max25}$  is the maximum carboxylation rate at 25°C ( $\mu\text{mol CO}_2 \text{ m}^{-2} \text{ s}^{-1}$ ),  $a_{v\max}$  is a temperature sensitive parameter,  $f(T_v)$  is a function that mimics the thermal breakdown of metabolic processes,  $f(N)$  is a foliage nitrogen factor ( $f(N) \leq 1$ ), and  $\beta$  is the soil moisture controlling factor. Since there were no N dynamics in the model,  $f(N)$  was set as a constant 0.67, which translates to a constant 33% of  $V_{\max}$  down-regulation due to N stress. This factor was originally used in Running and Coughlan (1988) and adapted into LSMs by Bonan (1991).

Our modifications to the original Noah-MP mainly concern the sub-models dealing with dynamic leaf and subsurface runoff. The dynamic leaf option is turned on to provide ~~net~~ **primary productivity (NPP)** and biomass to the newly coupled N dynamic sub-model. In the original Noah-MP model, subsurface runoff from each soil layer was not an explicit output, but it is now a new output in the updated model. However, N concentrations are different among soil layers, which affects the amount of N removed from each soil layer by subsurface runoff. Therefore, in conjunction with the runoff scheme options 1 (TOPMODEL with groundwater) and 2 (TOPMODEL with an equilibrium water table), the lumped subsurface runoff for all four layers is first calculated, and then the water is removed from each soil layer weighted by hydraulic conductivity and soil layer thickness.

## 2.2 Nitrogen Dynamics

In Noah-MP, the soil N model structure is the same as in SWAT, which includes five N pools consisting of two inorganic forms ( $\text{NH}_4^+$  and  $\text{NO}_3^-$ ) and three organic forms (active, stable, and fresh pools). The N processes employed from SWAT are mineralization, decomposition, immobilization, nitrification, denitrification, and atmospheric deposition. The N processes employed from FUN are uptake and symbiotic biological N fixation, which can be further divided into active and passive soil N uptake, leaf N retranslocation, and symbiotic biological N fixation. Figure 1 shows the flow chart of the nitrogen dynamic model. ~~Table 1 shows the model input variables and parameters. Here In this section, we only describe the core equations. The full description for plant N uptake and soil N dynamics is available in Fisher et al. (2010) and Neitsch et al. (2011), respectively. Table 1 shows the model input variables and parameters. Most of these parameters use the values recommended by Fisher et al. (2010) and Neitsch et al. (2011); while Some parameters of them are adjusted to best represent the site condition and hence match site observation. The important adjusted parameters include the  $\gamma_{\text{sw},\text{thr}}$  (threshold value of soil water factor for denitrification to occur),  $\beta_{\text{min}}$  (rate coefficient for~~

1 mineralization of the humic organic nitrogen), and  $\beta_{rsd}$  (rate coefficient for mineralization of  
2 the fresh organic nitrogen in residue).

### 3 2.2.1 Nitrogen Uptake and Fixation

4 Plant N uptake and fixation follows the framework of Fisher et al. (2010), which determines  
5 N acquired by plants through Eq. (13) advection (passive uptake), Eq. (4) symbiotic  
6 biological N fixation, Eq. (5) active uptake, and Eq. (26) retranslocation (resorption), (3)  
7 active uptake, and (4) symbiotic biological N fixation.

8 Noah-MP calculates the NPP or its available carbon,  $C_{NPP}$  (kg C m<sup>-2</sup>), following FUN. To  
9 maintain the prescribed carbon to nitrogen (C:N) ratio ( $r_{C:N}$ ), the N demand,  $N_{demand}$  (kg N  
10 m<sup>-2</sup>), is calculated:

$$11 \quad N_{demand} = \frac{C_{NPP}}{r_{C:N}}. \quad (2)$$

12 where  $r_{C:N}$  is the C:N ratio for the whole plant, which is computed for each component (leaf,  
13 root, and wood) of the plant proportionally to the biomass. C:N ratios for each component of  
14 the plant for each vegetation type are from Oleson et al. (2013).

15 Because no extra energetic cost is needed, passive uptake,  $N_{passive}$  (kg N m<sup>-2</sup>), is the first and  
16 preferred source of N that a plant depletes.

$$17 \quad N_{passive} = N_{soil} \frac{E_T}{s_d}. \quad (3)$$

18 where  $N_{soil}$  is the available soil N for the given soil layer (kg N m<sup>-2</sup>),  $E_T$  is transpiration rate  
19 (m s<sup>-1</sup>), and  $s_d$  is the soil water depth (m). This pathway is typically a minor contributor  
20 except under very high soil N conditions.

21 If  $N_{passive}$  is less than  $N_{demand}$ , then the remaining required N must be obtained from either  
22 retranslocation ( $N_{resorb}$ , kg N m<sup>-2</sup>), active uptake ( $N_{active}$ , kg N m<sup>-2</sup>), or BNF–biological N  
23 fixation ( $N_{fix}$ , kg N m<sup>-2</sup>), all of which are associated with energetic cost and hence require C  
24 expenditure (C cost). The C costs of fixation ( $Cost_{fix}$ , kg C kg N<sup>-1</sup>), active uptake ( $Cost_{active}$ ,  
25 kg C kg N<sup>-1</sup>), and resorption ( $Cost_{resorb}$ , kg C kg N<sup>-1</sup>) are calculated:

$$26 \quad Cost_{fix} = s \{ \exp[a + b \cdot T_{soil} \cdot (1 - 0.5 \cdot T_{soil} / c)] - 2 \}, \quad (4)$$

$$Cost_{active} = \left( \frac{k_N}{N_{soil}} \right) \left( \frac{k_C}{C_{root}} \right), \quad (5)$$

$$Cost_{resorb} = \frac{k_R}{N_{leaf}}. \quad (6)$$

where  $a$ ,  $b$ , and  $c$  ( $-3.62$ ,  $0.27$  and  $25.15$ , respectively) are empirical curve-fitting parameters (dimensionless) from [Houlton et al. \(2008\)](#),  $s$  is a scaling factor ( $=-62.5$ , use  $\text{kg C kg N}^{-1} \text{ } ^\circ\text{C}$  for unit consistency),  $T_{soil}$  is soil temperature ( $^\circ\text{C}$ ),  $k_N$  and  $k_C$  are both  $1 \text{ kg C m}^{-2}$ ,  $k_R$  is  $0.01 \text{ kg C m}^{-2}$ ,  $C_{root}$  is total root biomass ( $\text{kg C m}^{-2}$ ), and  $N_{leaf}$  is the amount of N in the leaf ( $\text{kg N m}^{-2}$ ). Active uptake is typically a dominant form of N uptake in natural ecosystems, consuming large quantities of NPP (that would otherwise go to growth or other allocations) in exchange for N.

Similar to parallel circuits, each carbon cost is treated as a resistor and the integrated cost ( $Cost_{acq}$ ,  $\text{kg C kg N}^{-1}$ ) is calculated ([Brzostek et al., 2014](#)):

$$\frac{1}{Cost_{acq}} = \frac{1}{Cost_{fix}} + \frac{1}{Cost_{resorb}} + \sum_{i=1}^n \frac{1}{Cost_{active,i}}. \quad (7)$$

where  $Cost_{active,i}$  is the C cost for active N uptake of  $i$ th soil layer and  $N_{soil-n}$  is the total number of soil layers.

Using Ohm's law, N acquired from C expenditure ( $N_{acq}$ ,  $\text{kg N m}^{-2}$ ) is analogous to current and thus is calculated:

$$N_{acq} = \frac{C_{acq}}{Cost_{acq}}. \quad (8)$$

Therefore, plant N uptake and fixation are computed and are updated for each N pool. In addition, the effect of N-limitation on  $\text{CO}_2$  sequestration is represented in the model through the theory of C cost economics.

## 2.2.2 Mineralization, Decomposition, and Immobilization

Fresh organic residue is broken down into simpler organic components via decomposition. The plant-unavailable organic N is then converted into plant-available inorganic N via mineralization by microbes. Plant-available inorganic N can also be converted into plant-unavailable organic N via immobilization by microbes.



Immobilization is incorporated into mineralization calculation (net mineralization). Mineralization and decomposition, which are only allowed to occur when soil temperature is above 0°C, are constrained by water availability and temperature. The nutrient cycling temperature factor for soil layer  $ly$ ,  $\gamma_{tmp,ly}$ , is calculated:

$$\gamma_{tmp,ly} = 0.9 \cdot \frac{T_{soil,ly}}{T_{soil,ly} + \exp[9.93 - 0.312 \cdot T_{soil,ly}]} + 0.1 . \quad (9)$$

where  $T_{soil,ly}$  is the temperature of soil layer  $ly$  (°C).

The nutrient cycling water factor for soil layer  $ly$ ,  $\gamma_{sw,ly}$ , is calculated:

$$\gamma_{sw,ly} = \frac{\theta_{ly}}{\theta_{s,ly}} . \quad (10)$$

where  $\theta_{ly}$  is the water content of soil layer  $ly$  (mm H<sub>2</sub>O), and  $\theta_{s,ly}$  is the water content of soil layer  $ly$  at field capacity (mm H<sub>2</sub>O).

The mineralized N from the humus active organic N pool,  $N_{mina,ly}$  (kg N m<sup>-2</sup>), is calculated:

$$N_{mina,ly} = \beta_{mina,ly} (\gamma_{tmp,ly} \cdot \gamma_{sw,ly})^{1/2} \cdot N_{aon,ly} . \quad (11)$$

where  $\beta_{mina}$  is the rate coefficient for mineralization of the humus active organic nutrients, and  $N_{aon,ly}$  is the amount of N in the active organic pool (kg N m<sup>-2</sup>).

The mineralized N from the residue fresh organic N pool,  $N_{minf,ly}$  (kg N m<sup>-2</sup>), is calculated:

$$N_{minf,ly} = 0.8 \cdot \delta_{ntr,ly} \cdot N_{fon,ly} . \quad (12)$$

where  $\delta_{ntr,ly}$  is the residue decay rate constant, and  $N_{fon,ly}$  is the amount of N in the fresh organic pool (kg N m<sup>-2</sup>).

The decomposed N from the residue fresh organic N pool,  $N_{dec,ly}$  (kg N m<sup>-2</sup>), is calculated:

$$N_{dec,ly} = 0.2 \cdot \delta_{ntr,ly} \cdot N_{fon,ly} . \quad (13)$$

### 2.2.3 Nitrification and Ammonia Volatilization

Using a first-order kinetic rate equation, the total amount of ammonium lost to nitrification and volatilization in layer  $ly$ ,  $N_{nit|vol,ly}$  (kg N m<sup>-2</sup>), is calculated:

$$N_{nit|vol,ly} = NH4_{ly} \cdot [1 - \exp(-\eta_{nit,ly} - \eta_{vol,ly})] . \quad (14)$$

where  $NH_4_{ly}$  is the amount of ammonium in layer  $ly$  ( $\text{kg N m}^{-2}$ ),  $\eta_{nit,ly}$  is the nitrification regulator, and  $\eta_{vol,ly}$  is the volatilization regulator. The calculation of  $\eta_{nit,ly}$  and  $\eta_{vol,ly}$  is described in [Neitsch et al. \(2011\)](#).

$N_{nit|vol,ly}$  is then partitioned to nitrification and volatilization. The amounts of N converted from  $NH_4^+$  and  $NO_3^-$  of the ammonium pool via nitrification and volatilization are then calculated:

$$N_{nit,ly} = \frac{fr_{nit,ly}}{(fr_{nit,ly} + fr_{vol,ly})} \cdot N_{nit|vol,ly}, \quad (15)$$

$$N_{vol,ly} = \frac{fr_{vol,ly}}{(fr_{nit,ly} + fr_{vol,ly})} \cdot N_{nit|vol,ly}. \quad (16)$$

where  $fr_{nit,ly}$  and  $fr_{vol,ly}$  are the estimated fractions of N lost through nitrification and volatilization, respectively. They are calculated from the individual regulator in [Eq. \(14\)](#) as following:

$$fr_{nit,ly} = 1 - \exp[-\eta_{nit,ly}], \quad (17)$$

$$fr_{vol,ly} = 1 - \exp[-\eta_{vol,ly}]. \quad (18)$$

#### 2.2.4 Denitrification

Denitrification is the process that bacteria remove N from soil (converting  $NO_3^-$  to  $N_2$  or  $N_2O$  gases). Denitrification rate,  $N_{denit,ly}$  ( $\text{kg N m}^{-2}$ ), is calculated:

$$\begin{cases} N_{denit,ly} = NO_3_{ly} \cdot [1 - \exp(-\beta_{denit} \cdot \gamma_{tmp,ly} \cdot orgC_{ly})] & \text{if } \gamma_{sw,ly} \geq \gamma_{sw,thr} \\ N_{denit,ly} = 0 & \text{if } \gamma_{sw,ly} < \gamma_{sw,thr} \end{cases}. \quad (19)$$

where  $orgC_{ly}$  is the amount of organic C in the layer (%),  $\beta_{denit}$  is the rate coefficient for denitrification, and  $\gamma_{sw,thr}$  is the threshold value of  $\gamma_{sw,ly}$  for denitrification to occur.

#### 2.2.5 Atmospheric Deposition

While the mechanism of atmospheric deposition is not fully understood, the uncertainty is parameterized into the concentration of nitrate/ammonium in the rain for wet deposition, and the nitrate/ammonium deposition rate for dry deposition.

The amount of nitrate and ammonium added to the soil through wet deposition,  $NO_{3,wet}$  ( $\text{kg N m}^{-2}$ ) and  $NH_{4,wet}$  ( $\text{kg N m}^{-2}$ ), are calculated:

$$NO_{3, wet} = 0.01 \cdot R_{NO3} \cdot P, \quad (20)$$

$$NH_{4, wet} = 0.01 \cdot R_{NH4} \cdot P. \quad (21)$$

where  $R_{NO3}$  is the concentration of nitrate in the rain (mg N L<sup>-1</sup>),  $R_{NH4}$  is the concentration of ammonium in the rain (mg N L<sup>-1</sup>), and  $P$  is the amount of precipitation. The values for  $R_{NO3}$  and  $R_{NH4}$  used in this study are listed in [Table 1](#).

## 2.2.6 Fertilizer Application

The N fertilizer application process is included in the new model as well. If real fertilizer application data (timing and amount for a specific year) are available, they can be used as model inputs. Otherwise, a fixed amount of N fertilizer (e.g., 7.8 g N m<sup>-2</sup> a<sup>-1</sup> in this study) is applied at a fixed time of a year (e.g., June 20 in this study).

## 2.2.7 Leaching

N leaching from land to water bodies is a consequence of soil weathering and erosion processes. In particular, organic N attached to soil particles is transported to surface water through soil erosion. Therefore, the modified universal soil loss equation (USLE) ([Williams, 1995](#)) is used to determine soil erosion. The detail of the calculation is described in [Neitsch et al. \(2011\)](#).

N in nitrate form can be transported with surface runoff, lateral runoff, or percolation, which is calculated:

$$NO_{3, surf} = \beta_{NO3} \cdot conc_{NO3, mobile} \cdot Q_{surf}, \quad (22)$$

$$\begin{cases} NO_{3, lat, ly} = \beta_{NO3} \cdot conc_{NO3, mobile} \cdot Q_{lat, ly} & \text{for toplayer} \\ NO_{3, lat, ly} = conc_{NO3, mobile} \cdot Q_{lat, ly} & \text{for lower layers} \end{cases} \quad (23)$$

$$NO_{3, perc} = conc_{NO3, mobile} \cdot w_{perc, ly}. \quad (24)$$

where  $NO_{3, surf}$ ,  $NO_{3, lat, ly}$  and  $NO_{3, perc}$  are the soil nitrates removed in surface runoff, in subsurface flow, and by percolation, respectively, (kg N m<sup>-2</sup>),  $\beta_{NO3}$  is the nitrate percolation coefficient,  $conc_{NO3, mobile}$  is the concentration of nitrate in the mobile water in the layer (kg N mm H<sub>2</sub>O<sup>-1</sup>), and  $w_{perc, ly}$  is the amount of water percolating to the underlying soil layer (mm H<sub>2</sub>O),  $Q_{surf}$  is the generated surface runoff (mm H<sub>2</sub>O), and  $Q_{lat, ly}$  is the water discharged from the layer by lateral flow (mm H<sub>2</sub>O).

## 2.3 Description of Evaluation Data and Model Configuration

At the regional scale, N related measurements are very limited. Even at site level, measurements are limited with respect to plant and carbon dynamics. The Kellogg Biological Station (KBS)—a Long-term Ecological Research (LTER) site—is unique in its long term continuous measurements of N related variables (soil nitrate, N leaching, mineralization, nitrification, and fertilizer application) in an agricultural setting with multiple crop and soil controls. Even within the LTER network, we cannot find a second site that conducts this integrated suite of measurements. Therefore, the new model is evaluated at this site.

KBS is located in Hickory Corners, Michigan, USA, within the northeastern portion of the U.S. Corn Belt (42.40°N, 85.40°W, elevation 288 m). Mean annual temperature is 10.1°C and mean annual precipitation is 1,005 mm with about half falling as snow. This study uses two treatments from this site: T1 cropland with conventional tillage and T2 cropland without tillage. Both treatments are rainfed and are planted with the same crops: corn, soybean, and winter wheat in rotation.

This site features multiple N related measurements. Soil inorganic N concentration, which is sampled from surface to 25 cm soil depth, is available from 1989 to 2012. Concentration of inorganic N leaching at bedrock, which is sampled at 1.2 m of soil depth, is available from 1995 to 2013. These two measurements are used to evaluate model simulated concentrations of soil nitrate for the top 25 cm and nitrate leaching from the soil bottom. Soil N mineralization, which measures the net mineralization potential and is available from 1989 to 2012, is compared with the modeled mineralization rate qualitatively.

In addition, soil moisture content is sampled from surface to 25 cm soil depth and is calculated on a dry weight basis. In order to compare with model output, it is converted to volumetric soil moisture by applying the soil bulk density. Annual NPP is converted from annual crop yields (1989–2013) by assuming a harvest index and a root to whole plant ratio for each crop type. The harvest indices for corn, soybean, and winter wheat are 0.53, 0.42, and 0.39, respectively. The root to shoot ratios for corn, soybean, and winter wheat are 0.18, 0.15, and 0.20, respectively (Prince et al., 2001; West et al., 2010). Although N uptake cannot be evaluated directly at this site, by evaluating the annual NPP, we can see the model's performance in representing the N limitation effect on plant growth.

Noah-MP requires the following atmospheric forcing data at least at a 3-hourly time step: precipitation, air temperature, specific humidity, surface air pressure, wind speed, incoming

solar radiation, and incoming longwave radiation. The weather station at the site measures all of these except for incoming longwave radiation, but does not cover the entire period from 1989 to 2014 (e.g., hourly precipitation data are only available since 2007), when the N data are available. Therefore, atmospheric forcing data are extracted from the  $0.125^\circ \times 0.125^\circ$  gridded forcing data from the North American Land Data Assimilation System (NLDAS, (NLDAS, Xia et al., 2012)). Table 2 compares the atmospheric forcing data between NLDAS and site measurements for 2008–2014. We can see that the differences in precipitation and air temperature—the two most important forcing fields for N cycling—are very small, with relative biases –1.4% and 4.2%, respectively.

Finally, the site management log records the detailed operational practices such as soil preparation, planting, fertilizer application, pesticide application, and harvest. N fertilizer application data include the date of application, rate, fertilizer type, and equipment used. The fertilizer application date and rate are used as model inputs.

### 3 Results and Analyses

#### 3.1 Evaluation of Soil Moisture

Modeled volumetric soil moisture, which is important for nutrient cycling and plant growth, is compared to measured soil moisture (Figure 2). The model performs particularly reasonably well on both treatments (i.e., with and without tillage) (see, for example, Cai et al. (2014b)) in terms of capturing the mean and seasonal variation, which is consistent with previous study by Cai et al. (2014b). The model simulated multiple year averages are both 0.243 for the two treatments. These are very close to observations which are 0.238 and 0.264 for T1 and T2, respectively. The correlation coefficient is 0.78 for T1 and 0.76 for T2, which are considered high skills, especially on a daily scale.

However, differences between modeled and observed soil moisture are also found. From observation (Figure 2), we can see that the treatment without tillage (T2) has slightly higher soil moisture than the treatment with tillage (T1). Therefore, tillage practice reduces soil moisture. However, the difference in modeled soil moisture is negligible between the two treatments (both are 0.243). This is because Noah-MP does not consider water redistribution due to tillage, although N redistribution is considered in the soil N dynamic sub-model. N is redistributed by mixing a certain depth (i.e. 100 mm) of soil with a mixing efficiency (i.e. 30%) (Neitsch et al., 2011). In addition, observed soil moisture has higher variations. As we

can see from [Figure 2](#), observation tends to have either higher peaks or lower valleys than model simulation. We also notice that some values from observation are extremely low, which may not be necessarily true in reality. Considering the wide spread of the observational ranges defined by up to six replicating plots, Noah-MP provides a reasonable water environment for the N cycling.

### 3.2 Evaluation of Soil Nitrate

Soil nitrate concentration is the outcome of all N related processes that occur in soil such as decomposition, mineralization, nitrification, denitrification, and uptake. It determines the available N that plants can use. The skills in modeling the soil nitrate concentration reflect the overall performance of the model in simulating the N cycle. [Figure 3](#) shows the comparison of the model simulated soil nitrate concentration with site observations for both T1 and T2. The model captures the major variations of the soil nitrate. N fertilizer application is responsible for the high peaks. These high peaks drop very fast at first and then drop slowly, which can sustain crop growth for a few months.

The multi-year average of modeled soil nitrate concentration is 5.77 mg/kg (4.90 mg/kg) for T1 (T2), which is consistent with the observed 5.61 mg/kg (4.81 mg/kg). Correlation coefficients are 0.58 and 0.56 for T1 for T2, respectively. From the wide spread of the range error bars, we can see that soil N dynamics may be affected by a variety of complicated factors, which makes it difficult to model. Therefore, although the correlation coefficients are not considered high skills relative to the soil moisture statistics, they are still reasonable.

While both treatments show very similar patterns ([Figure 3](#)), T1 with conventional tillage tends to have higher soil nitrate concentration. This is understandable because tillage practices redistribute water and nutrients in soil, which accelerates the N cycling. [Table 3](#) shows annual averages of major N fluxes for both treatments. T1 has higher rates of humus mineralization and residue decomposition, but at the same time, it also has higher rates of denitrification and leaching. Therefore, it produces more N<sub>2</sub>O (a greenhouse gas) and more N runoff to rivers. Particularly, with higher N leaching, less soil nitrate is available for passive uptake by plant. As a result, plants need to acquire more N through active uptake.

### 3.3 Evaluation of Nitrate Leaching from Soil Bottom

N leaching can be transported to rivers through surface and subsurface runoff and to groundwater through percolation from soil bottom. Only the last pathway is measured at this site. [Figure 4](#) shows the comparison of concentrations of the leached solution from the soil bottom between model simulation and observation. The averaged concentration of N leaching from the soil bottom for T1 (T2) is 12.84 mg/kg (8.86 mg/kg) from model simulation and 13.57 mg/kg (9.26 mg/kg) from observation. The correlation coefficients are 0.43 and 0.40 for T1 and T2, respectively. Although these skills may not be considered satisfactory, the model can still produce comparable results with observation.

The peak in 2003 is extremely high and long lasting. This is probably due to the abnormal pattern of precipitation distribution in 2003. In a normal year, storms higher than 50 mm usually occur in either summer or fall. However, in 2003, there was an early storm on April 4 which reached 61 mm in one day. As we can see from [Figure 3](#), the soil nitrate concentration is also high. The combination of high water infiltration (due to the storm) and high soil nitrate concentration resulted in a large amount of soil nitrate being brought to the bottom soil layer. A few months following that, there was no large storm, which was again different from a normal year. As a result, the high concentration nitrate solution was drained slowly out of the bottom layer of soil. The modeled nitrate leaching also shows a peak over this period but the values are only close to the lower bound of the observed range. This suggests that improvement is needed so the model can better capture peaks under this situation.

We also notice that without tillage, N leaching is about one third lower than that with tillage. Without tillage, the temporal variation is also smaller.

### 3.4 Evaluation of Annual NPP

NPP indicates the amount of C that is assimilated from the atmosphere into plants and thus is important in studying not only crop and ecosystem productivity, but also climate change feedbacks. NPP is mainly determined by plant photosynthesis and autotrophic respiration. It is also affected by water and nutrient stresses. In this study, N stress on plant growth is calculated by the reduction of NPP due to N acquisition, which can be considered another form of plant respiration. [Figure 5](#) shows the comparison of simulated annual NPP against observation. Since the original Noah-MP without N dynamics also simulates NPP, its results are also shown here as a reference. The mean annual NPP simulated by the original Noah-MP



1 is 544 gC/m<sup>2</sup> (the same simulation for both treatments as original Noah-MP does not  
2 distinguish tillage and no tillage). By including the N dynamics, simulated annual NPP is  
3 reduced to 432 gC/m<sup>2</sup> (441 gC/m<sup>2</sup>) for T1 (T2), which is more consistent with observed 437  
4 gC/m<sup>2</sup> (471 gC/m<sup>2</sup>). The correlation coefficient increased to 0.77 for T1, and from 0.30 to  
5 0.72 for T2, which is a significant improvement. This improvement is due to the better  
6 characterization of the amount of carbon allocated to N acquisition instead of growth.

7 Modeled rate of NPP down-regulation—the fraction of NPP reduction due to N limitation—is  
8 35.4% and 34.7% for T1 and T2, respectively. These rates are close to the 33% of down-  
9 regulation rate used in the default Noah-MP. By dynamically simulating the demand and  
10 supply of N with time, these become even closer to the observations.

11 Surprisingly, even with slower N cycling, T2 produces slightly higher NPP ([Table 3](#)), which  
12 is consistent between model and observation. If this is the case, except for drying up soil,  
13 releasing more N<sub>2</sub>O gas, and producing more N leaching, is there any benefit from tillage?  
14 The answer is yes. Less N fertilizer is needed for cropland with tillage. Based on the site  
15 management log, in total there was 194.8 gN/m<sup>2</sup> of N fertilizer applied to T1 from 1989 to  
16 2013, which is less than the amount (210.7 gN/m<sup>2</sup>) applied to T2 during the same period.

### 17 **3.5 Impacts of Nitrogen Dynamics on Carbon Cycle**

18 The coupling of the N dynamics into Noah-MP not only adds N related modeling but also  
19 affects other components of the model, i.e. the C and water cycles. This is because the change  
20 in NPP affects leaf biomass and hence LAI. The change in LAI can affect photosynthesis,  
21 which in return affects NPP.

22 [Figure 6](#) shows the comparison of the simulated C related state and flux variables between the  
23 default and N dynamics enhanced Noah-MP. We can see that NPP is decreased from 544  
24 gC/m<sup>2</sup> to 432 gC/m<sup>2</sup>. Most of the decrease occurs before the peak growing season, which  
25 results in a slight decrease in LAI. However, the peak LAI has very minor increase. After the  
26 peak, LAI decreases more slowly than the default, which is due to the decreased turnover rate  
27 proportional to the NPP down-regulation rate. If the turnover rate is not down-regulated  
28 accordingly, the peak LAI will be cut in half. Due to the slower turnover rate, more leaf  
29 biomass (indicated by LAI) is involved in photosynthesis. Therefore, compared to the default,  
30 Noah-MP with N dynamics generates higher gross primary production (GPP) during the

second half of the growing season, although it is lower during the first half of the growing season. Annual mean GPP is decreased by about 28 gC/m<sup>2</sup>.

NEE has a similar change. The annual NEE is  $-179$  gC/m<sup>2</sup> ( $-183$  gC/m<sup>2</sup>) from Noah-MP with N dynamics (default Noah-MP), which is comparable to the NEE in [West et al. \(2010\)](#) for this region. Its absolute value is decreased by 4 gC/m<sup>2</sup>, which means that C sink is slightly decreased. This decrease is small compared to the GPP decrease, probably because soil respiration is also decreased. All annual peaks of NPP, LAI, GPP, and NEE are delayed for about half month. This is probably due to the fact that the primary N fertilizations ( $> 10$  gN/m<sup>2</sup>) were mainly applied after late June and thus plants encountered high N stress during the first half of growing season.

### 3.6 Impacts of Nitrogen Dynamics on Water Cycle

Through the changes in LAI and soil organic matters (SOM), the addition of N dynamics affects not only the C cycle but also the water cycle. The change in SOM is not currently considered and therefore, the impacts on the water cycle are from the change in LAI only, as shown in [Figure 7](#). These impacts are most pronounced on plant transpiration, which is increased by 33 mm/a. The increase mostly occurs during and after the peak growing season. In [Cai et al. \(2014a\)](#), Noah-MP simulated evapotranspiration (ET) over croplands increases too fast during the first half of the growing season and reaches peak about one month earlier than observation. The delayed peaks of LAI and ET can partly mitigate this issue. As there is more water extracted from soil by transpiration, soil moisture further decreases during the second half of growing season. Therefore, less water is available and thus soil evaporation is decreased by 9 mm/a. With the increase in ET, runoff is decreased by 13 mm/a.

Therefore, besides the great implications for C modeling and the potential for being used in environmental predictions, the addition of N dynamics can improve the hydrological simulations as well.

### 3.7 Impacts of Nitrogen Fertilizer Application

Observed N fertilizer application data is used in this study. However, this type of data is not always available, especially when models are applied in large regions. Often we only know the approximate amount of N fertilizer applied, without information on the exact dates. To guide the future large-scale application of this model, two additional experiments are run: (1)

1 N fertilizer is applied on June 20 every year and (2) N fertilizer is applied on April 15 every  
2 year. The first experiment is designed because in this site, a large amount of N fertilizer is  
3 applied mostly during mid-June and early July. Other dates are also reported in the literature,  
4 therefore, we use April 15 as another example. Both experiments use the same amount of N  
5 fertilizer as in the management log, which on average is  $7.8 \text{ g N m}^{-2} \text{ a}^{-1}$ .

6 Figure 8 shows comparison of some of the most relevant results between the two experiments  
7 and the default-one (real) with recorded dates and amount of N fertilizer application. Despite  
8 the different application time, the two experiments produce very consistent NPP with the  
9 defaultreal case. The June 20 experiment is much closer to the defaultreal case, even the  
10 seasonal variation is identical ~~to the default~~. The largest discrepancy is in 1993 and 1996.  
11 Based on the management log, in these two years, a large amount of N fertilizer was applied,  
12 which resulted in much higher NPP than results from the two experiments. Since April 15 is  
13 much earlier than the primary fertilizer application dates, NPP from this experiment is  
14 flattened out through the year. This also confirms the statement in Section 3.5 that later N  
15 fertilizer applications delay plant growth. Simulated N uptake from both experiments shows  
16 exactly the same story as NPP.

17 The simulated N leaching shows the opposite pattern to NPP. The default simulation produces  
18 the highest leaching, followed by the June 20 experiment and then the April 15 experiment.  
19 This is very likely because the fertilizer application dates are closer to the flood season for the  
20 former two cases and the chance of fertilized N being flashed out is higher. The difference in  
21 N fertilization dates also clearly affects the simulations of total soil nitrate. In the June 20  
22 experiment, soil nitrate reaches the lowest level in May because no N fertilizer is applied  
23 before June 20. In the default case, N fertilizer can actually be applied as early as April, but  
24 with a smaller amount before mid-June, which prevents the soil nitrate concentration from  
25 getting too low. Besides a large amount of N fertilizer applied in later months, the other  
26 reason that the default simulation reaches the highest concentration of soil nitrate is because it  
27 produces higher NPP, which can be returned to soil for decomposition.

28 Overall, the default simulation grows better plants (higher NPP) because N fertilizer is  
29 applied based on expert judgment of plants' demand. At the same time, however, it produces  
30 more N leaching than the two experiments, which is significant (insignificant) with respect to  
31 the April 15 (June 20) experiment at 90% confidence level. The experiment with closer dates  
32 of N fertilizer application to reality can better reproduce the N dynamics in observation.

Therefore, although we cannot always know the exact dates of N fertilizer application, a survey on this can help to improve model simulation.

### 3.8 Analysis of Nitrogen Uptake

As described in [Section 2.2.1](#), plants can get N for growth from four pathways: passive uptake, active uptake, fixation, and retranslocation, and the last three require C costs. [Figure 9](#) shows the actual N uptake from these pathways and their percentages of contribution to the total N uptake. Passive uptake is the dominant pathway, which contributes 57.7% of the total N uptake. Fixation, active uptake, and retranslocation contribute 28.6%, 8.7%, and 5.0%, respectively. This contrasts the results from the study by [Brzostek et al. \(2014\)](#) for non-fertilized trees, in which passive uptake only accounts for a small contribution. This is understandable because the purpose of fertilization is to minimize active uptake so that more NPP can be retained for crop growth. As demonstrated in [Timlin et al. \(2009\)](#), a higher fertilization rate results in a higher ratio of N uptake in transpiration to total N uptake. On the one hand, fertilization maintains soil nitrate concentration at high level. On the other hand, higher NPP for crop growth in turn results in higher LAI and thus higher transpiration. During peak growing season, therefore, plants receive a large amount of N under the combination of high transpiration and high soil nitrate concentration. During other periods, biological N fixation dominates.

### 3.9 Analysis of Major Soil Nitrate Fluxes

The soil nitrate storage with time is an outcome of the variations in incoming and outgoing fluxes. Besides N fertilizer and atmospheric deposition, humus mineralization and residue decomposition are the two major incoming fluxes. Because N fertilizer is a jumping behavior and atmospheric deposition is a relatively small fraction in this study ( $\sim 1.5 \text{ gN m}^{-2} \text{ a}^{-1}$ ), they are not analyzed here. The major outgoing fluxes are denitrification, leaching, and plant uptake.

[Figure 10](#) shows the seasonal variation of the above major fluxes. During the growing season, N fertilizer provides an important role in meeting the plant N demand, however, residue decomposition still makes the largest contribution and is the dominant factor responsible for the increase in total soil nitrate. During the non-growing season, a large amount of N is lost through denitrification and N leaching. However, when it reaches the peak growing season,

plants consume a large fraction of soil nitrate, which leaves very little for denitrification and leaching. N leaching is mostly associated with the timing and intensity of precipitation. Denitrification is also associated with precipitation, but it is directly related to the soil water content. High denitrification rate occurs during high soil water content, especially during water logging.

## **4 Conclusions**

In this study, a dynamic N model is coupled into Noah-MP by incorporating FUN's strength in plant N uptake and SWAT's strength in soil N cycling and agricultural management.

We evaluated the new model at KBS that provides good-quality, long-term observed N and ecological data. The model simulated soil moisture is consistent with observation, which shows that Noah-MP provides a good water environment for the N cycling. The simulated concentrations of soil nitrate and N leaching from soil bottom also compare well with observations. Although the model does not simulate some peaks well, especially for N leaching, the averages are very close to the observed values and the correlation coefficients are reasonable. Considering the wide spread of the range error bars defined by the measurements at the six replicates, the model shows high skills in capturing the major N flux/state variables. The significant improvement of annual NPP simulation demonstrates that the N limitation effect on plant growth is well represented in the model.

Moreover, the addition of N dynamics in Noah-MP improves the modeling of the C and water cycles. Comparing to the default Noah-MP, NPP simulations are improved significantly, in terms of consistent averages and much higher correlation coefficients with observation. The temporal pattern of simulated ET is also improved, featuring lower ET during spring and delayed peak.

This enhancement is expected to facilitate the simultaneous predictions of weather and environment by using a fully coupled Earth modeling system.

## **Code availability**

Noah-MP is an open source land surface model. The model is developed by a community led by The University of Texas at Austin. The code is archived in both

1 [http://www.ral.ucar.edu/research/land/technology/noahmp\\_lsm.php](http://www.ral.ucar.edu/research/land/technology/noahmp_lsm.php) and  
2 <http://www.jsrg.utexas.edu/noah-mp>. The new code implemented in this study will be made  
3 available and may be obtained by contacting the corresponding author via email.

## 5 **Acknowledgements**

6 This work is supported by the NASA grant NNX11A-JE432G, the National Center for  
7 Atmospheric Research Advanced Study Program, and the NASA Jet Propulsion Laboratory  
8 Strategic University Research Partnership Program. The first author would like to thank Guo-  
9 Yue Niu and Mingjie Shi for their help and the beneficial discussion with them. JBF  
10 contributed to this research from the Jet Propulsion Laboratory, California Institute of  
11 Technology, under a contract with NASA; and, through the University of California, Los  
12 Angeles. ~~Government sponsorship acknowledged.~~ JBF was supported by the US Department  
13 of Energy, Office of Science, Terrestrial Ecosystem Science program, and by the NSF  
14 Ecosystem Science program. XZ's contribution was supported by NASA (NNH11DA001N  
15 and NNH13ZDA001N). We are grateful for the observational data from the Kellogg  
16 Biological Station which is supported by the NSF LTER Program (DEB 1027253), ~~and~~ by  
17 Michigan State University AgBioResearch, and by the DOE Great Lakes Bioenergy Research  
18 Center (DE-FCO2-07ER64494 and DE-ACO5-76RL01830).

## References

- Boesch, D. F., Boynton, W. R., Crowder, L. B., Diaz, R. J., Howarth, R. W., Mee, L. D., Nixon, S. W., Rabalais, N. N., Rosenberg, R., Sanders, J. G., Scavia, D., and Turner, R. E.: Nutrient enrichment drives Gulf of Mexico hypoxia, *Eos Trans. AGU*, 90, 117, 2009.
- Bonan, G. B.: Atmosphere-biosphere exchange of carbon dioxide in boreal forests, *J. Geophys. Res.*, 96, 7301-7312, 1991.
- Bonan, G. B. and Levis, S.: Quantifying carbon-nitrogen feedbacks in the Community Land Model (CLM4), *Geophys. Res. Lett.*, 37, 2010.
- Boyer, E. W., Howarth, R. W., Galloway, J. N., Dentener, F. J., Green, P. A., and Vorosmarty, C. J.: Riverine nitrogen export from the continents to the coasts, *Global Biogeochem. Cy.*, 20, 2006.
- Brzostek, E. R., Fisher, J. B., and Phillips, R. P.: Modeling the carbon cost of plant nitrogen acquisition: Mycorrhizal trade-offs and multipath resistance uptake improve predictions of retranslocation, *J. Geophys. Res.*, 119, 1684-1697, 2014.
- Cai, X., Yang, Z.-L., David, C. H., Niu, G.-Y., and Rodell, M.: Hydrological evaluation of the Noah-MP land surface model for the Mississippi River Basin, *J. Geophys. Res.*, 119, 23-38, 2014a.
- Cai, X., Yang, Z.-L., Xia, Y., Huang, M., Wei, H., Leung, L. R., and Ek, M. B.: Assessment of simulated water balance from Noah, Noah-MP, CLM, and VIC over CONUS using the NLDAS test bed, *J. Geophys. Res.*, 119, 13751-13770, 2014b.
- Clark, D. B., Mercado, L. M., Sitch, S., Jones, C. D., Gedney, N., Best, M. J., Pryor, M., Rooney, G. G., Essery, R. L. H., Blyth, E., Boucher, O., Harding, R. J., Huntingford, C., and Cox, P. M.: The Joint UK Land Environment Simulator (JULES), model description - Part 2: Carbon fluxes and vegetation dynamics, *Geosci. Model Dev.*, 4, 701-722, 2011a.
- Clark, M. P., Kavetski, D., and Fenicia, F.: Pursuing the method of multiple working hypotheses for hydrological modeling, *Water Resour. Res.*, 47, 2011b.
- Conley, D. J., Paerl, H. W., Howarth, R. W., Boesch, D. F., Seitzinger, S. P., Havens, K. E., Lancelot, C., and Likens, G. E.: Controlling eutrophication: Nitrogen and phosphorus, *Science*, 323, 1014-1015, 2009.
- Diaz, R. J. and Rosenberg, R.: Spreading dead zones and consequences for marine ecosystems, *Science*, 321, 926-929, 2008.
- Dickinson, R. E., Berry, J. A., Bonan, G. B., Collatz, G. J., Field, C. B., Fung, I. Y., Goulden, M., Hoffmann, W. A., Jackson, R. B., Myneni, R., Sellers, P. J., and Shaikh, M.: Nitrogen controls on climate model evapotranspiration, *J. Climate*, 15, 278-295, 2002.
- Donner, S. D. and Scavia, D.: How climate controls the flux of nitrogen by the Mississippi River and the development of hypoxia in the Gulf of Mexico, *Limnol. Oceanogr.*, 52, 856-861, 2007.
- Fisher, J. B., Badgley, G., and Blyth, E.: Global nutrient limitation in terrestrial vegetation, *Global Biogeochem. Cy.*, 26, 2012.



1 Fisher, J. B., Sitch, S., Malhi, Y., Fisher, R. A., Huntingford, C., and Tan, S. Y.: Carbon cost  
2 of plant nitrogen acquisition: A mechanistic, globally applicable model of plant  
3 nitrogen uptake, retranslocation, and fixation, *Global Biogeochem. Cy.*, 24, 2010.

4 Fowler, D., Coyle, M., Skiba, U., Sutton, M. A., Cape, J. N., Reis, S., Sheppard, L. J.,  
5 Jenkins, A., Grizzetti, B., Galloway, J. N., Vitousek, P., Leach, A., Bouwman, A. F.,  
6 Butterbach-Bahl, K., Dentener, F., Stevenson, D., Amann, M., and Voss, M.: The  
7 global nitrogen cycle in the twenty-first century, *Phil. Trans. R. Soc. B*, 368, 2013.

8 Gruber, N. and Galloway, J. N.: An Earth-system perspective of the global nitrogen cycle,  
9 *Nature*, 451, 293-296, 2008.

10 Houlton, B. Z., Wang, Y. P., Vitousek, P. M., and Field, C. B.: A unifying framework for  
11 dinitrogen fixation in the terrestrial biosphere, *Nature*, 454, 327-U334, 2008.

12 Howarth, R. W., Swaney, D. P., Boyer, E. W., Marino, R., Jaworski, N., and Goodale, C.: The  
13 influence of climate on average nitrogen export from large watersheds in the  
14 Northeastern United States, *Biogeochemistry*, 79, 163-186, 2006.

15 Knops, J. M. H. and Tilman, D.: Dynamics of soil nitrogen and carbon accumulation for 61  
16 years after agricultural abandonment, *Ecology*, 81, 88-98, 2000.

17 Komatsu, E., Fukushima, T., and Harasawa, H.: A modeling approach to forecast the effect of  
18 long-term climate change on lake water quality, *Ecol. Model.*, 209, 351-366, 2007.

19 Kronvang, B., Behrendt, H., Andersen, H. E., Arheimer, B., Barr, A., Borgvang, S. A.,  
20 Bouraoui, F., Granlund, K., Grizzetti, B., Groenendijk, P., Schwaiger, E., Hejzlar, J.,  
21 Hoffmann, L., Johnsson, H., Panagopoulos, Y., Lo Porto, A., Reisser, H., Schoumans,  
22 O., Anthony, S., Silgram, M., Venohr, M., and Larsen, S. E.: Ensemble modelling of  
23 nutrient loads and nutrient load partitioning in 17 European catchments, *J. Environ.*  
24 *Monitor.*, 11, 572-583, 2009.

25 National Research Council: Clean coastal waters: understanding and reducing the effects of  
26 nutrient pollution, National Academy of Sciences, Washington, DC, 2000.

27 Neitsch, S. L., Arnold, J. G., Kiniry, J. R., and Williams, J. R.: Soil and Water Assessment  
28 Tool theoretical documentation version 2009, Texas Water Resources Institute, Texas  
29 A&M University, College Station, TX Technical Report No. 406, 2011.

30 Niu, G.-Y., Yang, Z.-L., Mitchell, K. E., Chen, F., Ek, M. B., Barlage, M., Kumar, A.,  
31 Manning, K., Niyogi, D., Rosero, E., Tewari, M., and Xia, Y. L.: The community  
32 Noah land surface model with multiparameterization options (Noah-MP): 1. Model  
33 description and evaluation with local-scale measurements, *J. Geophys. Res.*, 116,  
34 2011.

35 Oleson, K. W., Lawrence, D. M., Bonan, G. B., Drewniak, B., Huang, M., Koven, C. D.,  
36 Levis, S., Li, F., Riley, W. J., Subin, Z. M., Swenson, S. C., Thornton, P. E., Bozbiyik,  
37 A., Fisher, R., Heald, C. L., Kluzek, E., Lamarque, J.-F., Lawrence, P. J., Leung, L.  
38 R., Lipscomb, W., Muszala, S., Ricciuto, D. M., Sacks, W., Sun, Y., Tang, J., and  
39 Yang, Z.-L.: Technical description of version 4.5 of the Community Land Model  
40 (CLM), National Center for Atmospheric Research, Boulder, Colorado NCAR  
41 Technical Note NCAR/TN-503+STR, 434 pp., 2013.

42 Prince, S. D., Haskett, J., Steininger, M., Strand, H., and Wright, R.: Net primary production  
43 of US Midwest croplands from agricultural harvest yield data, *Ecol. Appl.*, 11, 1194-  
44 1205, 2001.

- 1 Rasmussen, R., Ikeda, K., Liu, C. H., Gochis, D., Clark, M., Dai, A. G., Gutmann, E., Dudhia,  
2 J., Chen, F., Barlage, M., Yates, D., and Zhang, G.: Climate change impacts on the  
3 water balance of the Colorado headwaters: High-resolution regional climate model  
4 simulations, *J. Hydrometeorol.*, 15, 1091-1116, 2014.
- 5 Running, S. W. and Coughlan, J. C.: A general model of forest ecosystem processes for  
6 regional applications I. Hydrologic balance, canopy, *Ecol. Model.*, 42, 125-154, 1988.
- 7 Scanlon, B. R., Reedy, R. C., and Bronson, K. F.: Impacts of land use change on nitrogen  
8 cycling archived in semiarid unsaturated zone nitrate profiles, southern High Plains,  
9 Texas, *Environ. Sci. Technol.*, 42, 7566-7572, 2008.
- 10 Schoumans, O. F., Silgram, M., Groenendijk, P., Bouraoui, F., Andersen, H. E., Kronvang,  
11 B., Behrendt, H., Arheimer, B., Johnsson, H., Panagopoulos, Y., Mimikou, M., Lo  
12 Porto, A., Reisser, H., Le Gall, G., Barr, A., and Anthony, S. G.: Description of nine  
13 nutrient loss models: capabilities and suitability based on their characteristics, *J.*  
14 *Environ. Monitor.*, 11, 506-514, 2009.
- 15 Shi, M., Fisher, J. B., Brzostek, E. R., and P, P. R.: Carbon cost of plant nitrogen acquisition:  
16 global carbon cycle impact from an improved plant nitrogen cycle in the Community  
17 Land Model, *Global Change Biol.*, in press. in press.
- 18 Thornton, P. E., Lamarque, J. F., Rosenbloom, N. A., and Mahowald, N. M.: Influence of  
19 carbon-nitrogen cycle coupling on land model response to CO<sub>2</sub> fertilization and  
20 climate variability, *Global Biogeochem. Cy.*, 21, 2007.
- 21 Timlin, D., Kouznetsov, M., Fleisher, D., Kim, S.-H., and Reddy, V. R.: Simulation of  
22 nitrogen demand and uptake in potato using a carbon-assimilation approach. In:  
23 Quantifying and Understanding Plant Nitrogen Uptake for Systems Modeling, Ma, L.,  
24 Ahuja, L. R., and Bruulsema, T. W. (Eds.), CRC Press, 2009.
- 25 Wang, Y. P., Houlton, B. Z., and Field, C. B.: A model of biogeochemical cycles of carbon,  
26 nitrogen, and phosphorus including symbiotic nitrogen fixation and phosphatase  
27 production, *Global Biogeochem. Cy.*, 21, 2007.
- 28 West, T. O., Brandt, C. C., Baskaran, L. M., Hellwinckel, C. M., Mueller, R., Bernacchi, C.  
29 J., Bandaru, V., Yang, B., Wilson, B. S., Marland, G., Nelson, R. G., Ugarte, D. G. D.  
30 L. T., and Post, W. M.: Cropland carbon fluxes in the United States: increasing  
31 geospatial resolution of inventory-based carbon accounting, *Ecol. Appl.*, 20, 1074-  
32 1086, 2010.
- 33 Williams, J. R.: The EPIC model. In: Computer models of watershed hydrology, Singh, V. P.  
34 (Ed.), Water Resources Publications, Highlands Ranch, CO, 1995.
- 35 Xia, Y. L., Mitchell, K., Ek, M., Sheffield, J., Cosgrove, B., Wood, E., Luo, L. F., Alonge, C.,  
36 Wei, H. L., Meng, J., Livneh, B., Lettenmaier, D., Koren, V., Duan, Q. Y., Mo, K.,  
37 Fan, Y., and Mocko, D.: Continental-scale water and energy flux analysis and  
38 validation for the North American Land Data Assimilation System project phase 2  
39 (NLDAS-2): 1. Intercomparison and application of model products, *J. Geophys. Res.*,  
40 117, D03109, 2012.
- 41 Yang, X. J., Wittig, V., Jain, A. K., and Post, W.: Integration of nitrogen cycle dynamics into  
42 the Integrated Science Assessment Model for the study of terrestrial ecosystem  
43 responses to global change, *Global Biogeochem. Cy.*, 23, 2009.

1 Yang, Z.-L., Niu, G.-Y., Mitchell, K. E., Chen, F., Ek, M. B., Barlage, M., Longuevergne, L.,  
2 Manning, K., Niyogi, D., Tewari, M., and Xia, Y. L.: The community Noah land  
3 surface model with multiparameterization options (Noah-MP): 2. Evaluation over  
4 global river basins, J. Geophys. Res., 116, 2011.

5

6

1 Table 1 Model input variables and parameters.

Parameter	Definition	Controlling process	Unit	Value
$r_{C:N}$	C:N ratios for each component of the plant	N demand	–	Leaf 27, root 45
$a$	Empirical curve-fitting parameter	Fixation	–	–3.62
$b$	Empirical curve-fitting parameter	Fixation	–	0.27
$c$	Empirical curve-fitting parameter	Fixation	–	25.15
$s$	Scaling factor	Fixation	–	–62.5
$k_N$	Empirical curve-fitting parameter	Active uptake	kg C m <sup>-2</sup>	1.0
$k_C$	Empirical curve-fitting parameter	Active uptake	kg C m <sup>-2</sup>	1.0
$N_{no3}$	Initial value for NO <sub>3</sub> concentration in soil layer	Initialization	g N m <sup>-2</sup>	6.7
$N_{aon}$	Initial value for humic organic N in soil layer	Initialization	g N m <sup>-2</sup>	12.4
$N_{fon}$	Initial value for fresh organic N in soil layer	Initialization	g N m <sup>-2</sup>	5.3
$C_{org}$	Initial organic carbon content in soil layer	Initialization	%	2.61, 0.35, 0.11, 0.07
$\rho_b$	Bulk density of the soil layer	Initialization	Mg m <sup>-3</sup>	1.3, 1.4, 1.5, 1.6
$f_{nh4n}$	Fraction of mineral N in fertilizer that is ammonium	Fertilization	–	0.4
$f_{surfn}$	Fraction of fertilizer that is applied to the top 10 mm of soil	Fertilization	–	0.2
$e_{mix}$	Mixing efficiency of tillage operation	Tillage	–	0.3
$\beta_{min}$	Rate coefficient for mineralization of the humic organic nitrogen	Mineralization	–	0.002
$\beta_{rsd}$	Rate coefficient for mineralization of the fresh organic nitrogen in residue	Mineralization	–	0.04
$\beta_{denit}$	Rate coefficient for denitrification	Denitrification	–	1.4
$\gamma_{sw,thr}$	Threshold value of soil water factor for denitrification to occur	Denitrification	–	0.85
$R_{no3}$	Concentration of nitrate in the rain	Deposition	mg kg <sup>-1</sup>	1.5
$R_{nh4}$	Concentration of ammonium in the rain	Deposition	mg kg <sup>-1</sup>	1.0
$D_{no3}$	Constant of nitrate rate with dry deposition	Deposition	g N m <sup>-2</sup> a <sup>-1</sup>	0.2
$D_{nh4}$	Constant of ammonium rate with dry deposition	Deposition	g N m <sup>-2</sup> a <sup>-1</sup>	0.2
$\theta_e$	Fraction of porosity from which anions are excluded	Leaching	–	0.15
$\beta_{no3}$	Nitrate percolation coefficient	Leaching	–	0.3

2 Note: Some parameters are not described in the paper. The values for  $C_{org}$  and  $\rho_b$  are for the  
3 four soil layers.

4

1 Table 2 Comparison of annual averaged atmospheric forcing data (2008–2014) between site  
 2 observation and NLDAS.

Source	Precipitation (mm)	Air temperature (°C)	Relative humidity (%)	Pressure (hPa)	Shortwave radiation (W m <sup>-2</sup> )	Wind speed (m s <sup>-1</sup> )	Wind direction (°)
Site obs.	937.19	9.15	73.44	982.29	157.07	3.37	194.72
NLDAS	924.45	9.55	76.50	983.47	171.03	4.74	206.43

3

4

1 Table 3 Annual averages of Noah-MP simulated major nitrogen fluxes and ~~net primary~~  
2 ~~productivity~~NPP. The NPP within the parentheses is from observation.

Treatment	NPP (gC/m <sup>2</sup> )	Uptake				Humus	Residue		
		Passiv (gN/m <sup>2</sup> )	Active (gN/m <sup>2</sup> )	Fixation (gN/m <sup>2</sup> )	Retranslocation (gN/m <sup>2</sup> )	Mineralization (gN/m <sup>2</sup> )	Decomposition (gN/m <sup>2</sup> )	Denitrification (gN/m <sup>2</sup> )	Leaching (gN/m <sup>2</sup> )
T1	432 (437)	6.18	0.90	2.88	0.50	3.79	12.30	10.48	7.19
T2	441 (471)	6.62	0.69	2.84	0.50	2.64	9.34	8.80	4.77

3

4

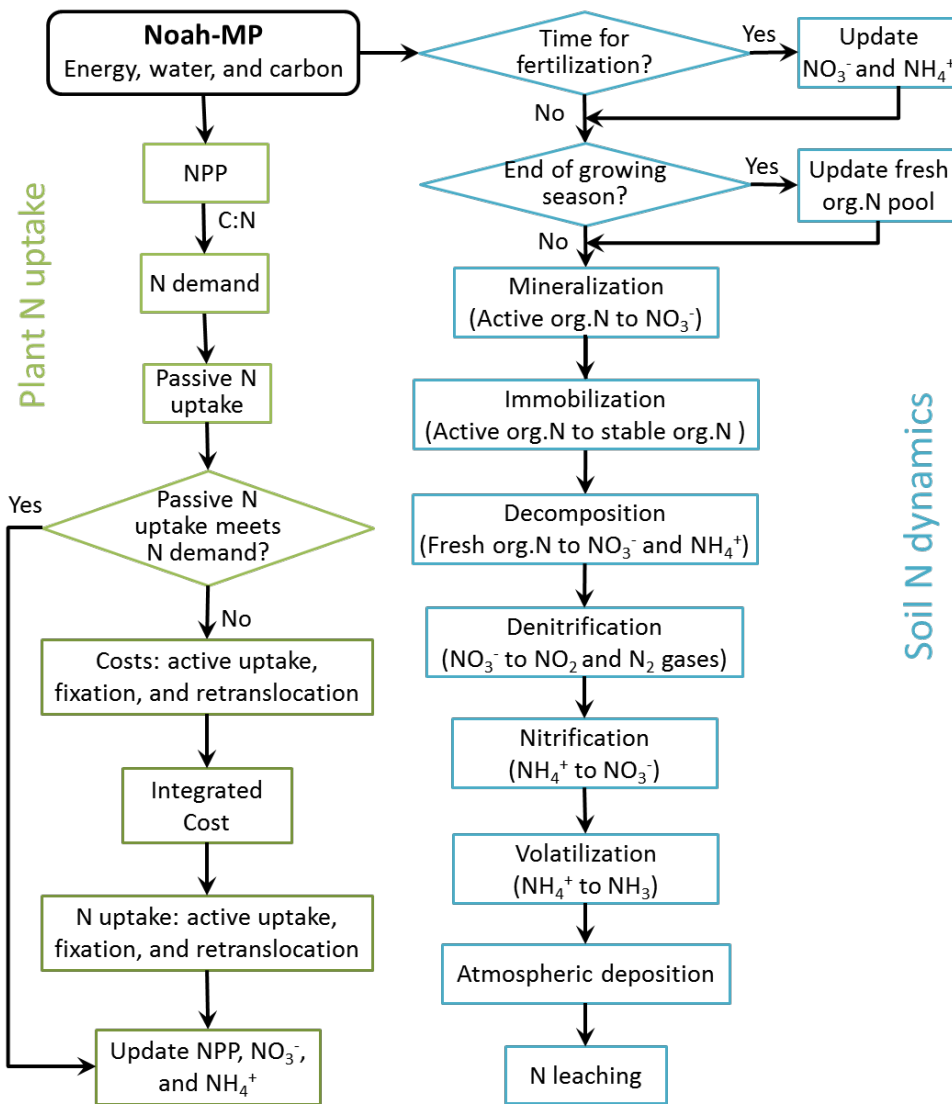


Figure 1 Flow chart of the nitrogen dynamic model. org.N: organic nitrogen.



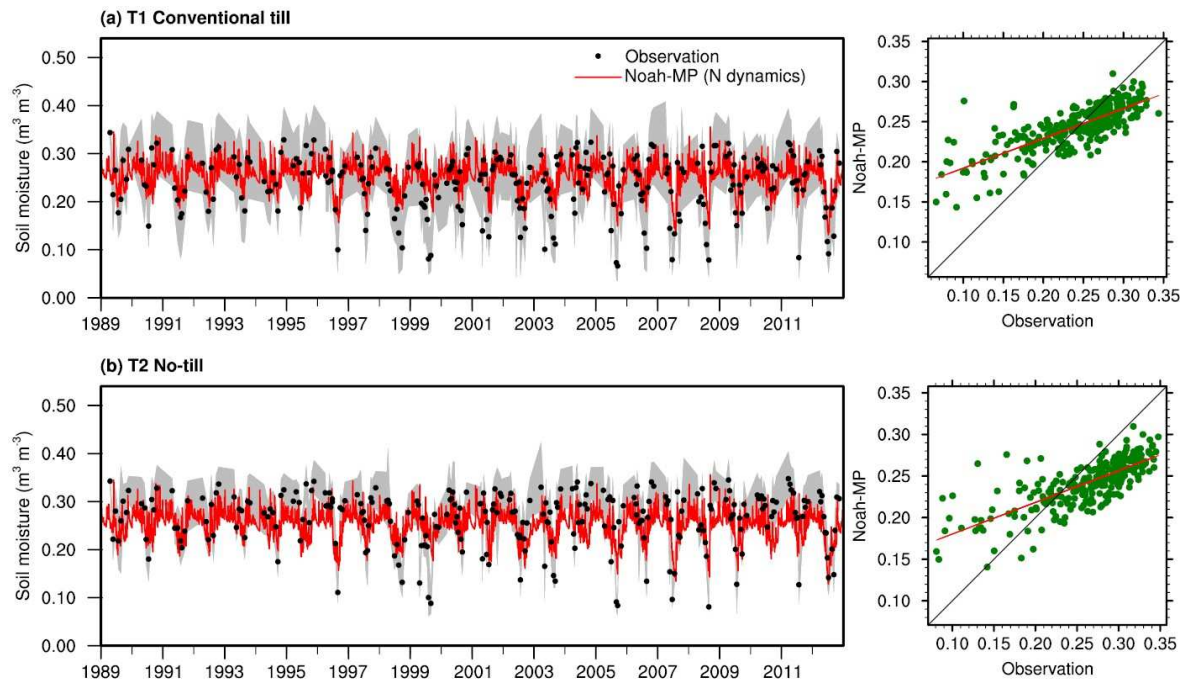


Figure 2 Observed and model simulated volumetric soil moisture from 1989 to 2012 for (a) Treatment 1: cropland with conventional tillage and (b) Treatment 2: cropland without tillage. The grey shaded area shows the observational ranges from up to six replicates for each treatment.

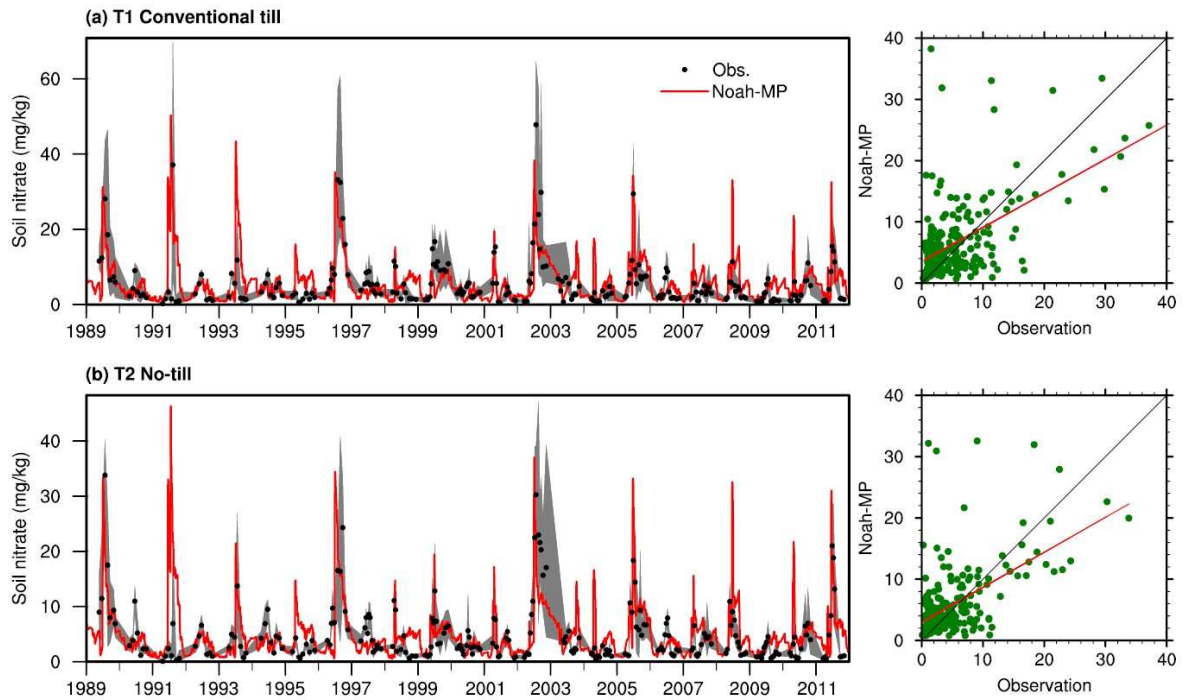


Figure 3 Observed and model simulated soil nitrate concentration from 1989 to 2011 for (a) Treatment 1: cropland with conventional tillage and (b) Treatment 2: cropland without tillage. The grey shaded area shows the observational ranges from up to six replicates for each treatment.

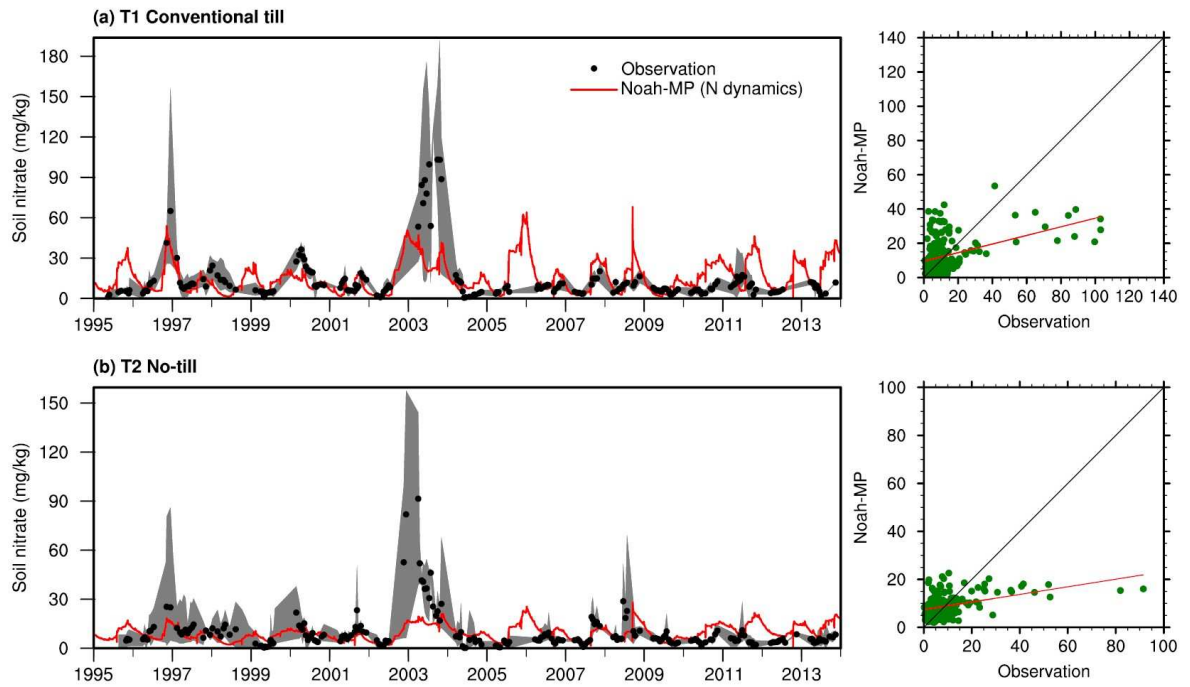


Figure 4 Observed and model simulated nitrate leaching from bottom of soil profile from 1995 to 2013 for (a) Treatment 1: cropland with conventional tillage and (b) Treatment 2: cropland without tillage. The grey shaded area shows the observational ranges from up to six replicates for each treatment.

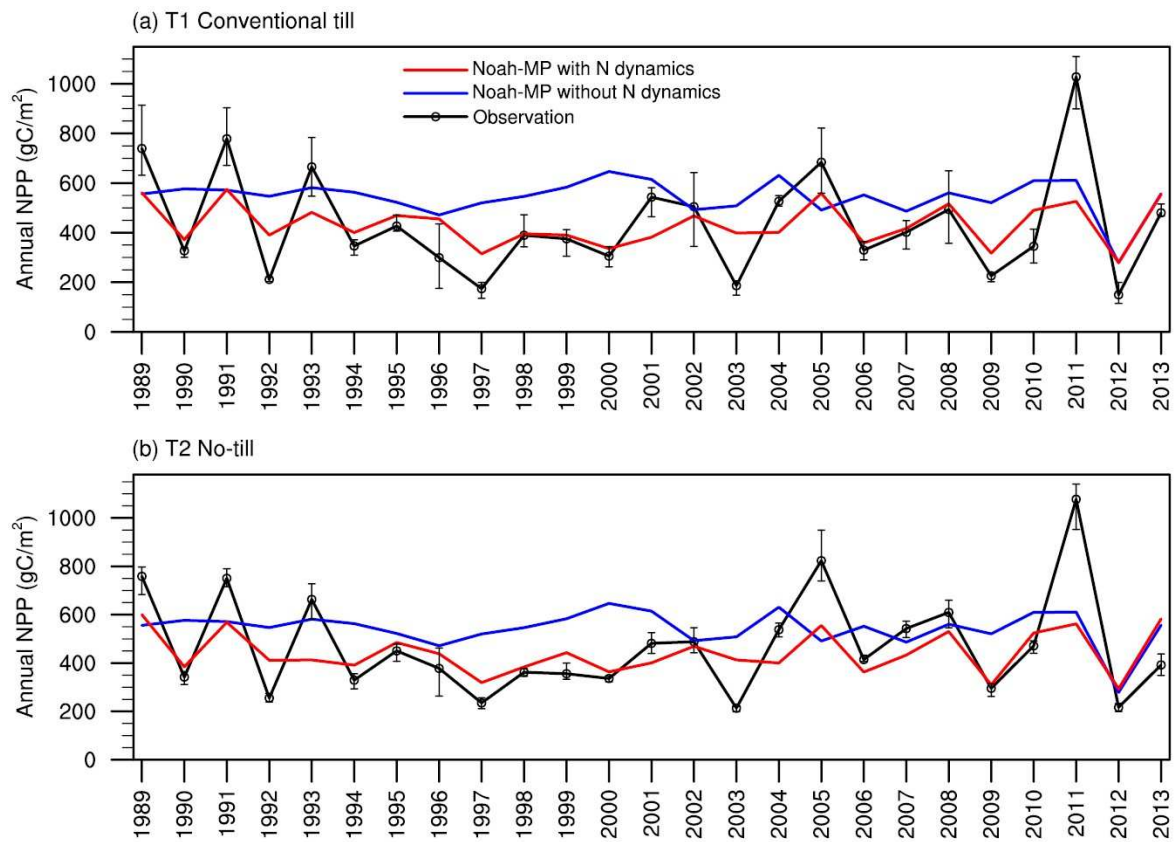


Figure 5 Observed and modeled annual NPP from 1989 to 2013 for (a) Treatment 1: cropland with conventional tillage and (b) Treatment 2: cropland without tillage. The error bars show the observational ranges from up to six replicates for each treatment.

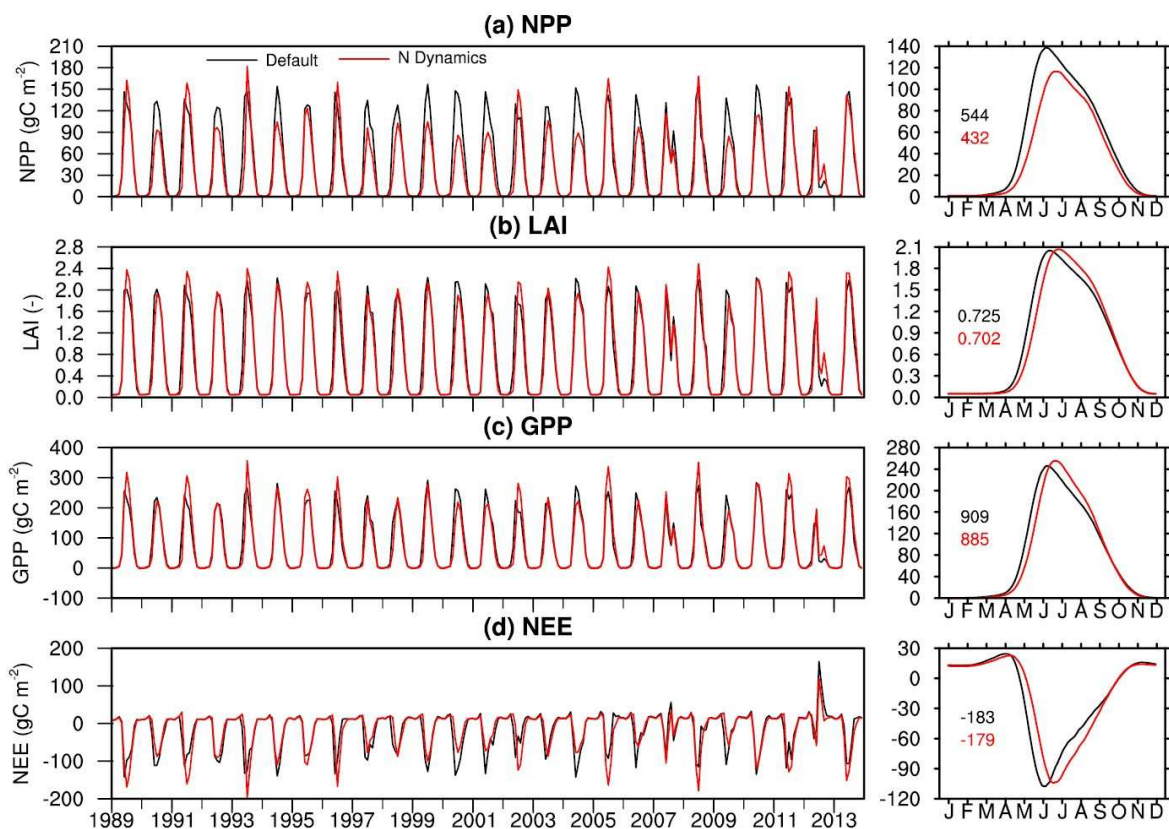


Figure 6 (left column) Monthly and (right column) climatologically seasonal cycle of model simulated (a) LAI, (b) NPP, (c) GPP, and (d) NEE from default Noah-MP and enhanced Noah-MP with N dynamics. The values in the right column indicate annual mean for each term (black: Noah-MP without N dynamics; red: Noah-MP with N dynamics).

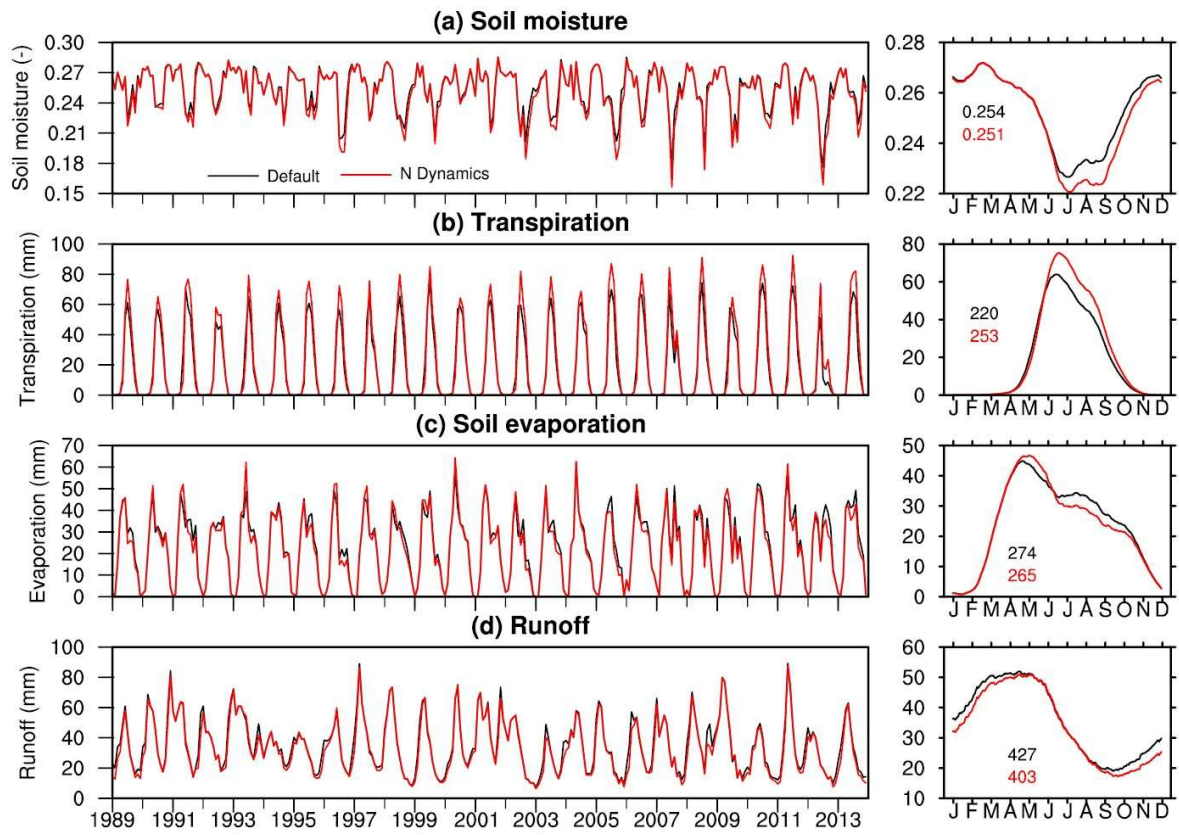


Figure 7 Same as Figure 6 except for (a) soil moisture, (b) transpiration, (c) soil evaporation, and (d) runoff.



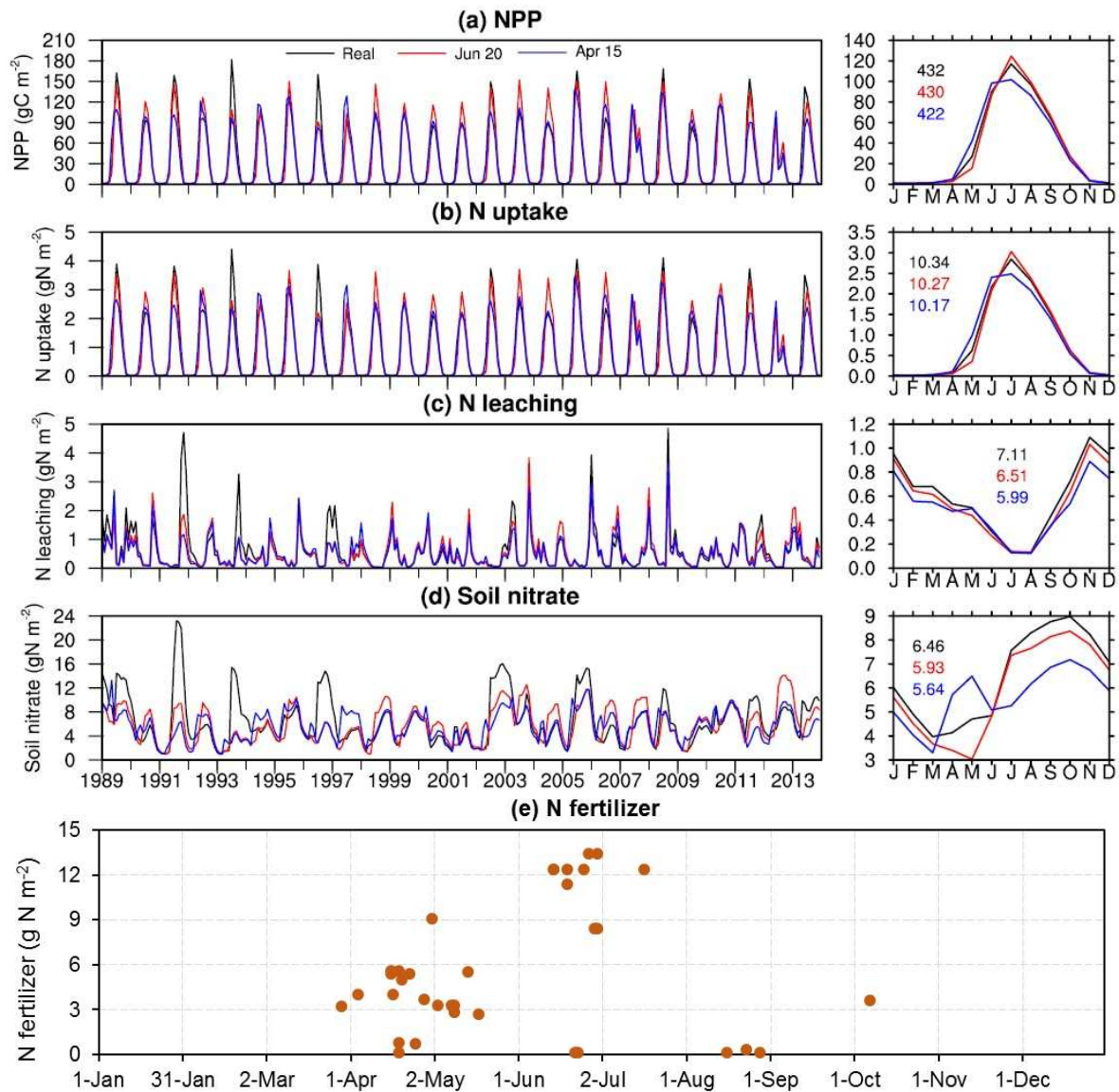


Figure 8 (left column) Monthly and (right column) climatologically seasonal cycle of model simulated (a) NPP, (b) N uptake, (c) N leaching, and (d) soil nitrate with different dates for N fertilization: real, June 20, and April 15. The values in the right column indicate annual mean for each term (black: real; red: June 20; blue: April 15). (e) Actual nitrogen fertilizer application amounts and dates as recorded in the agronomic log.

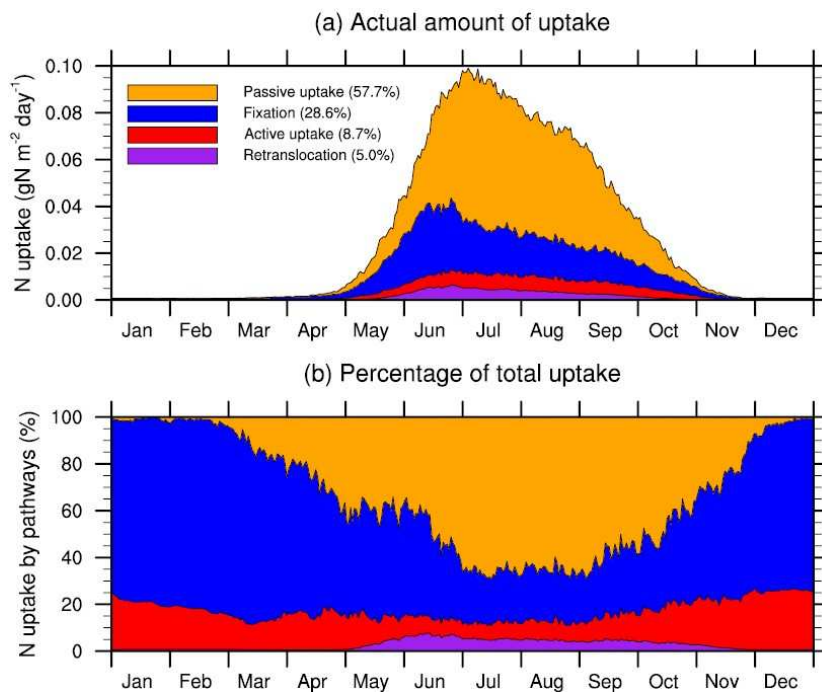


Figure 9 Daily climatology (1989–2013) of nitrogen uptake by pathways expresses as (a) actual amount of uptake and (b) percentage of total uptake.



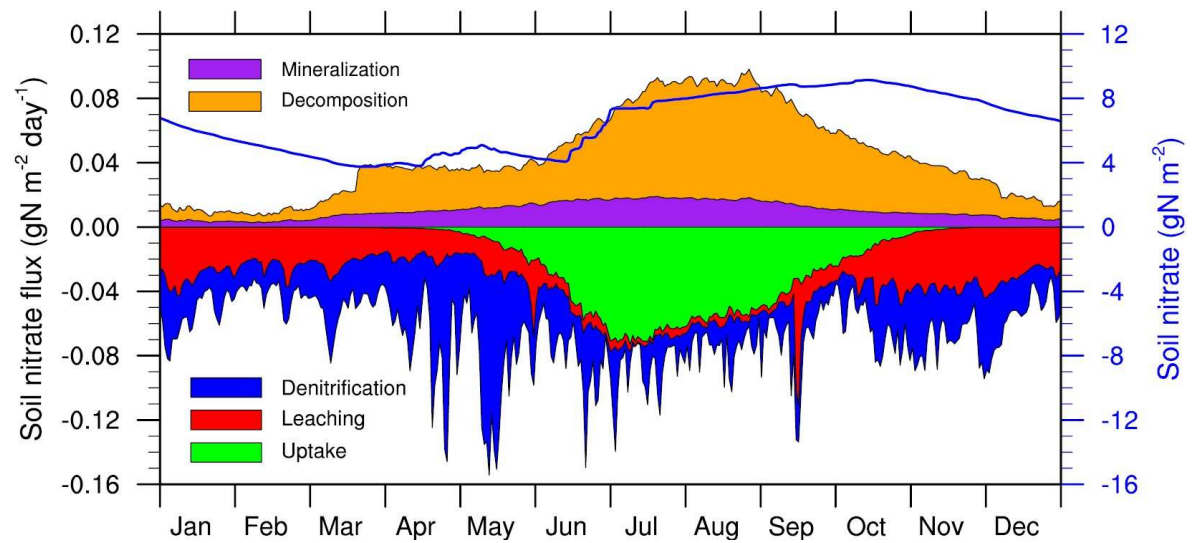


Figure 10 Daily climatology of the soil nitrate (blue solid line) and some major fluxes (color label bars) going in (humus mineralization and residue decomposition) and out (plant uptake, nitrate leaching, and denitrification) of the soil nitrate pool.