

Table S1: Sediment density data published in [Crosby et al. \(2006\)](#).

Depth (meters)	Sediment Density (gm/cc)
250	1.75
700	2
100	1.6
100	1.5
100	1.6
400	1.6
400	2.5
400	1.6
100	1.9
400	1.9

Figure S1: Age of the modern world ocean crust after Müller et al. (2008; earthbyte.org).

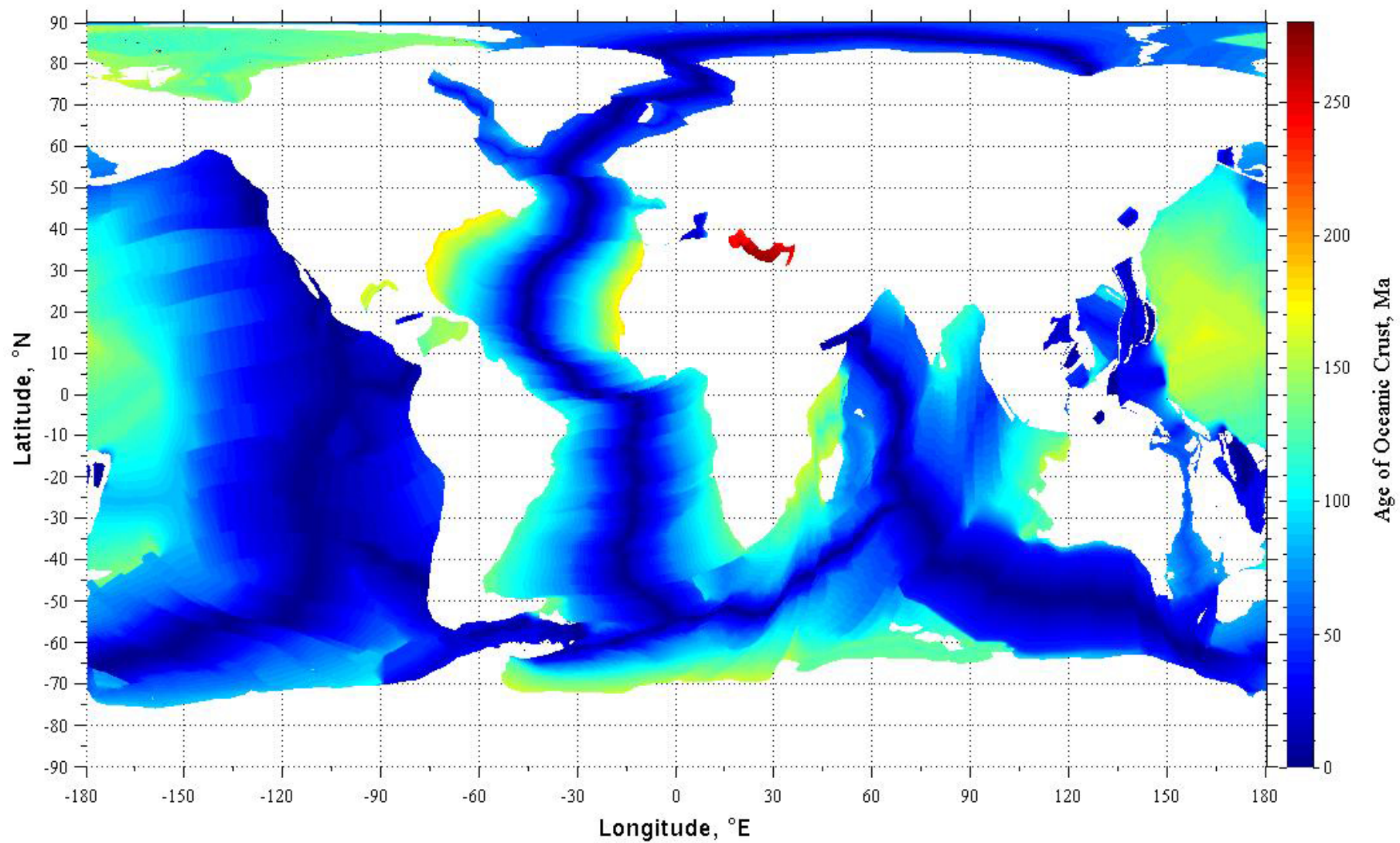


Figure S2: Total Sediment Thickness of the World's Oceans and Marginal Seas, Version 1 (Divins, 2003).

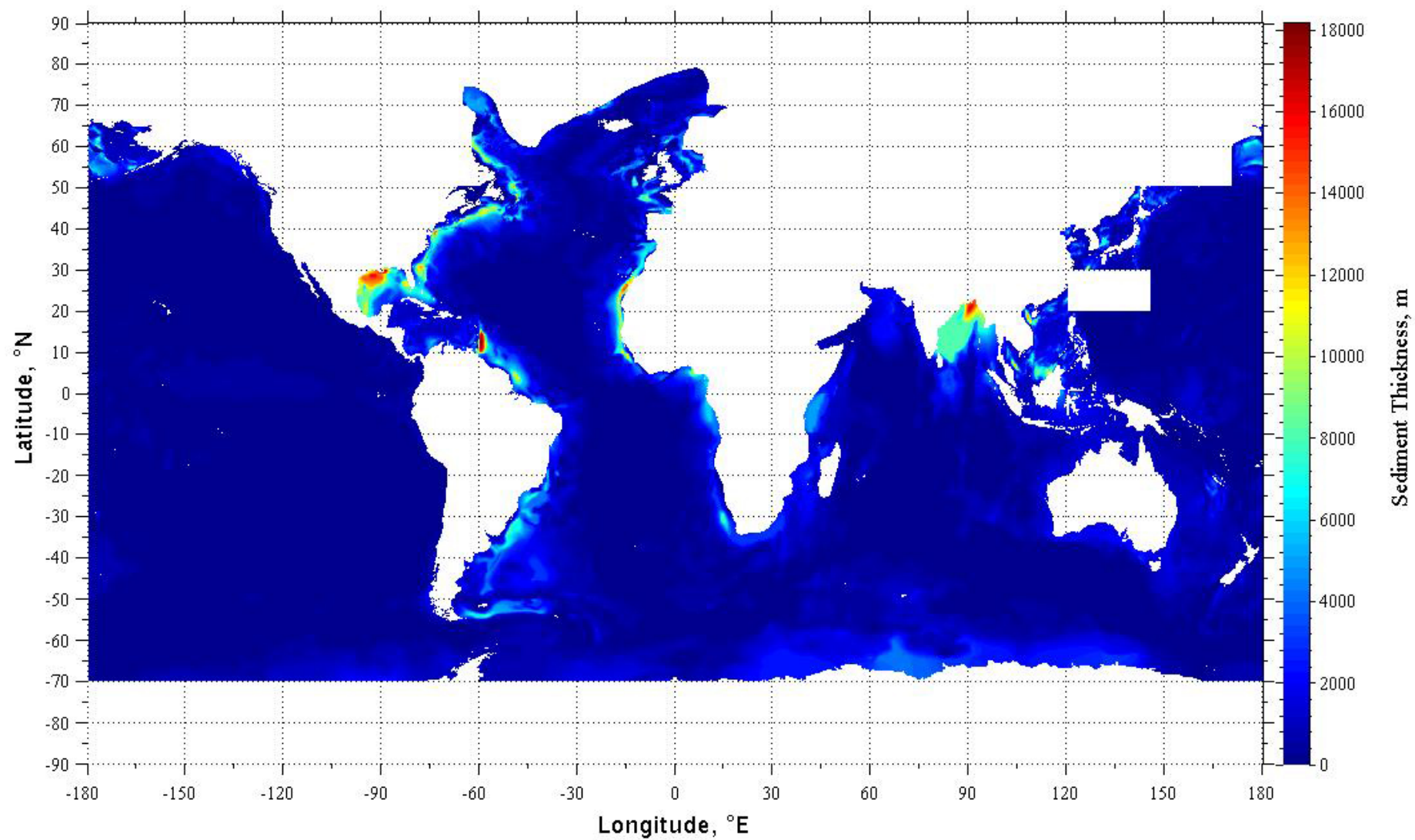


Figure S3: ETOPO1 Global Relief Model for oceanic regions (Amante and Eakins, 2009; earthmodels.org).

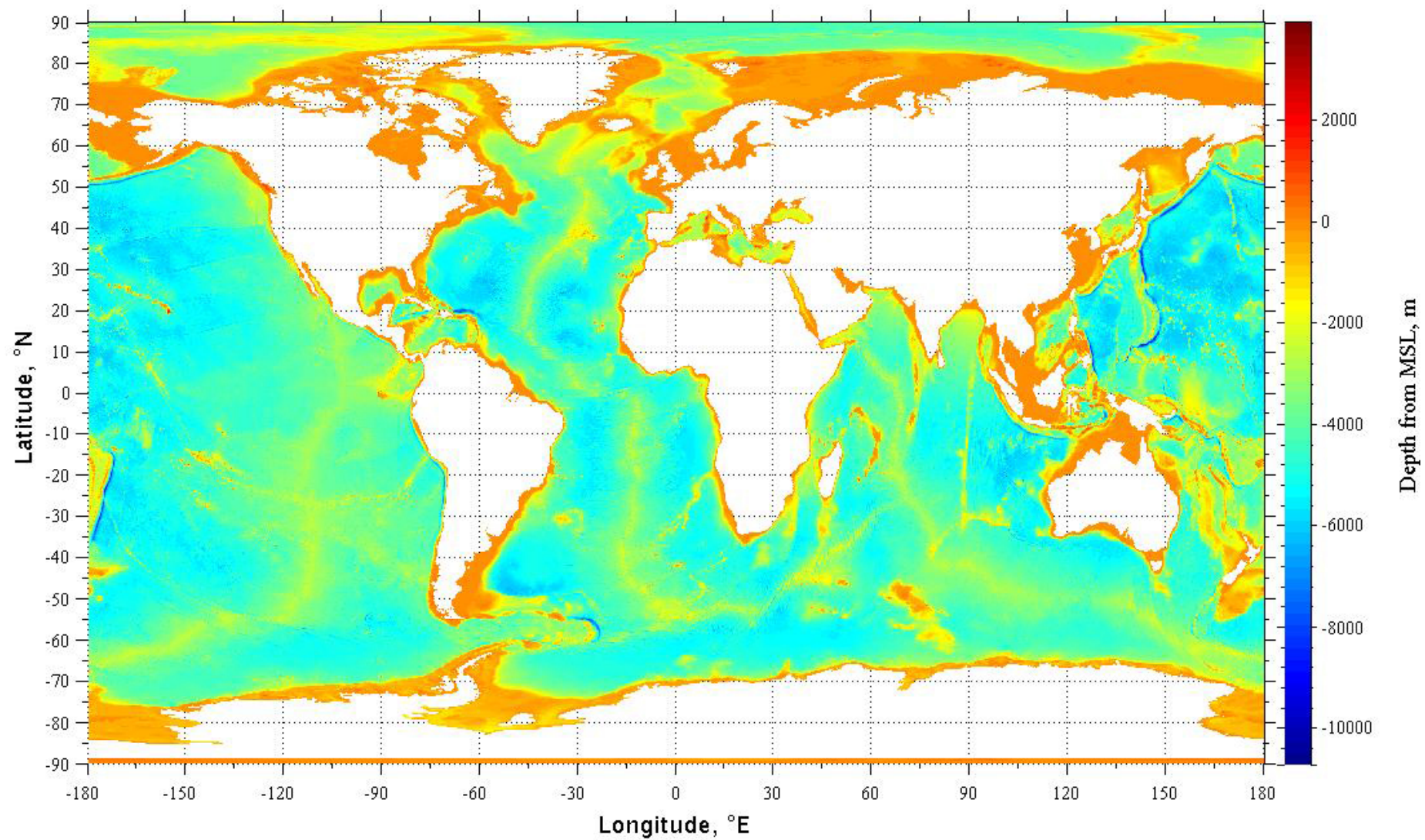
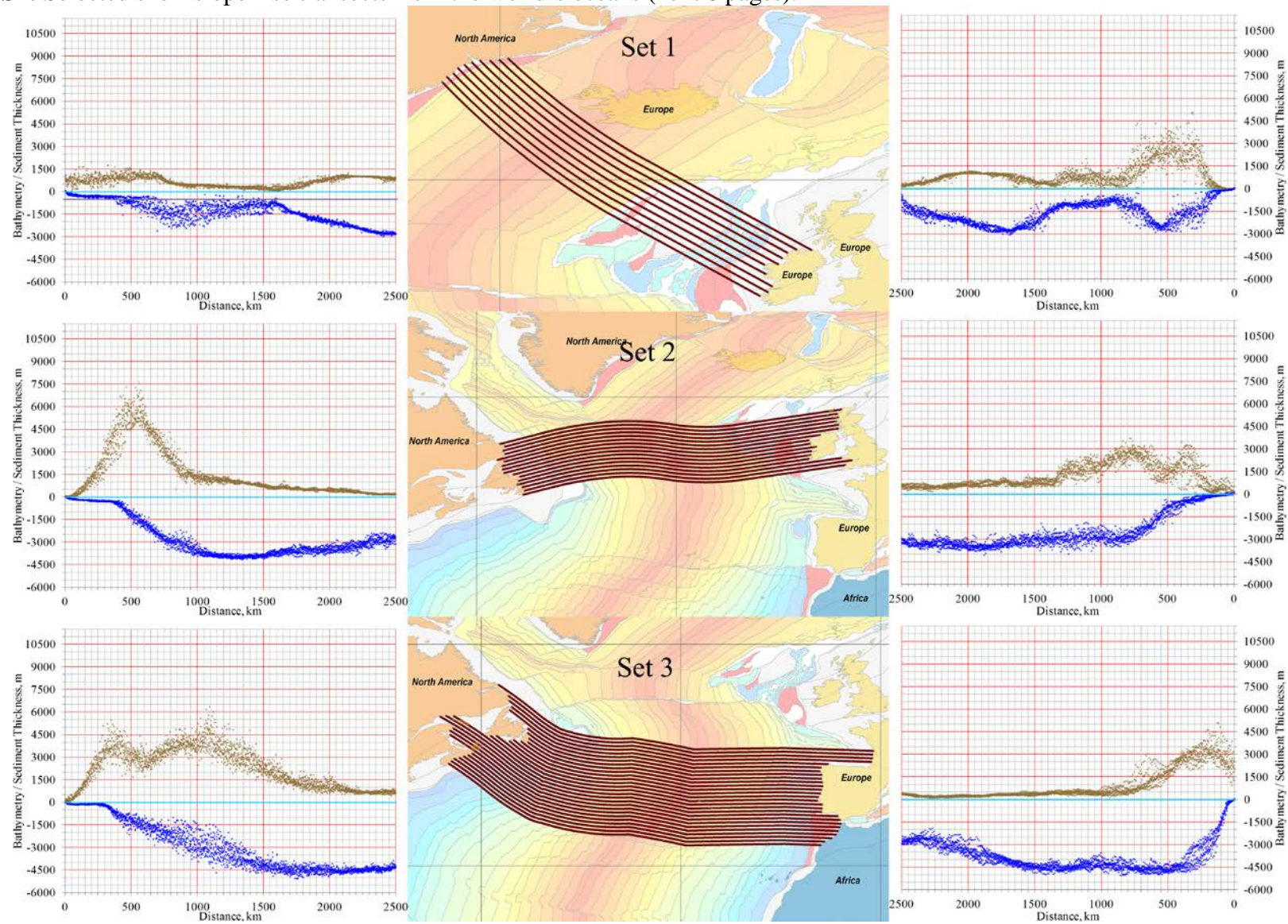
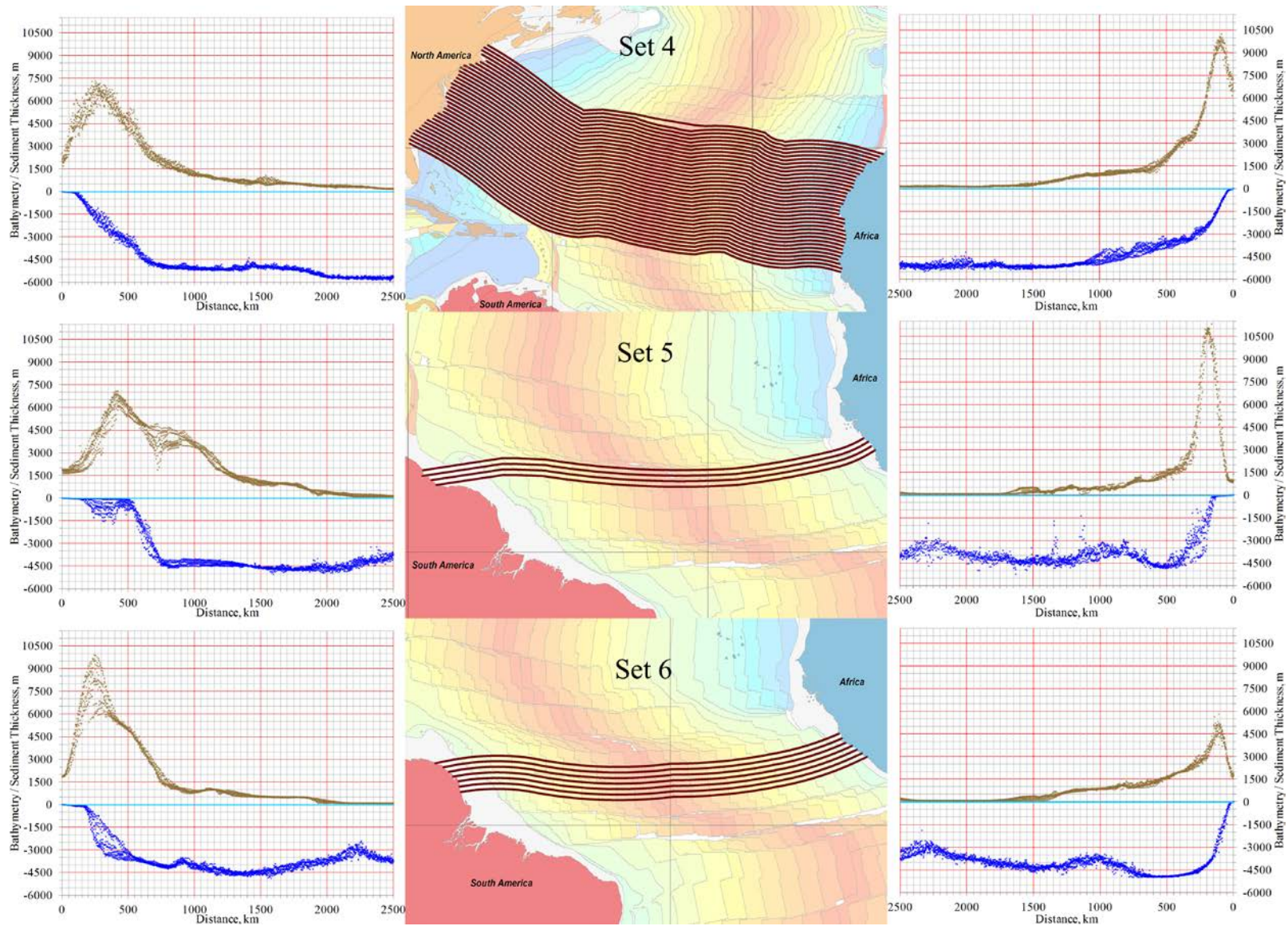
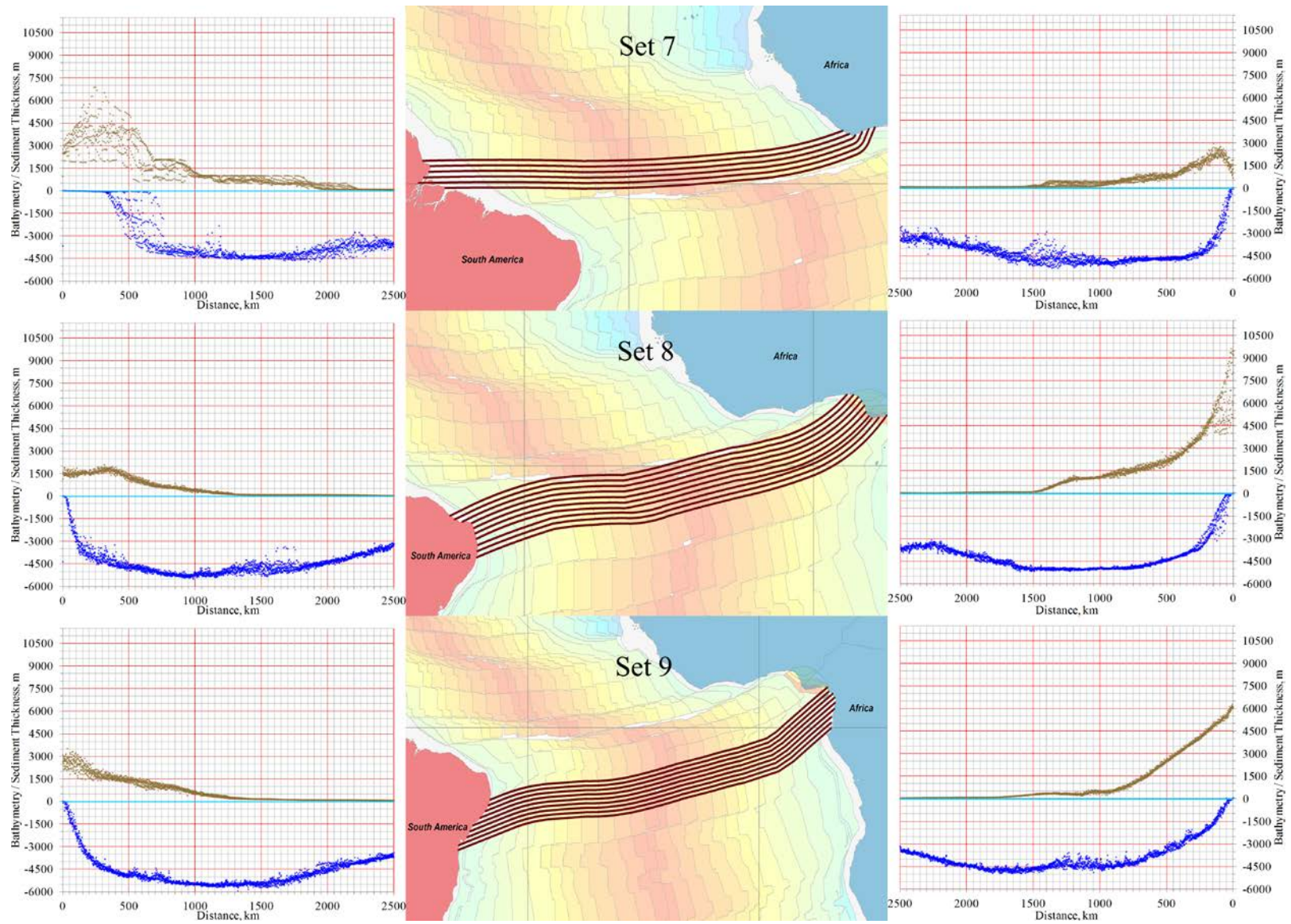
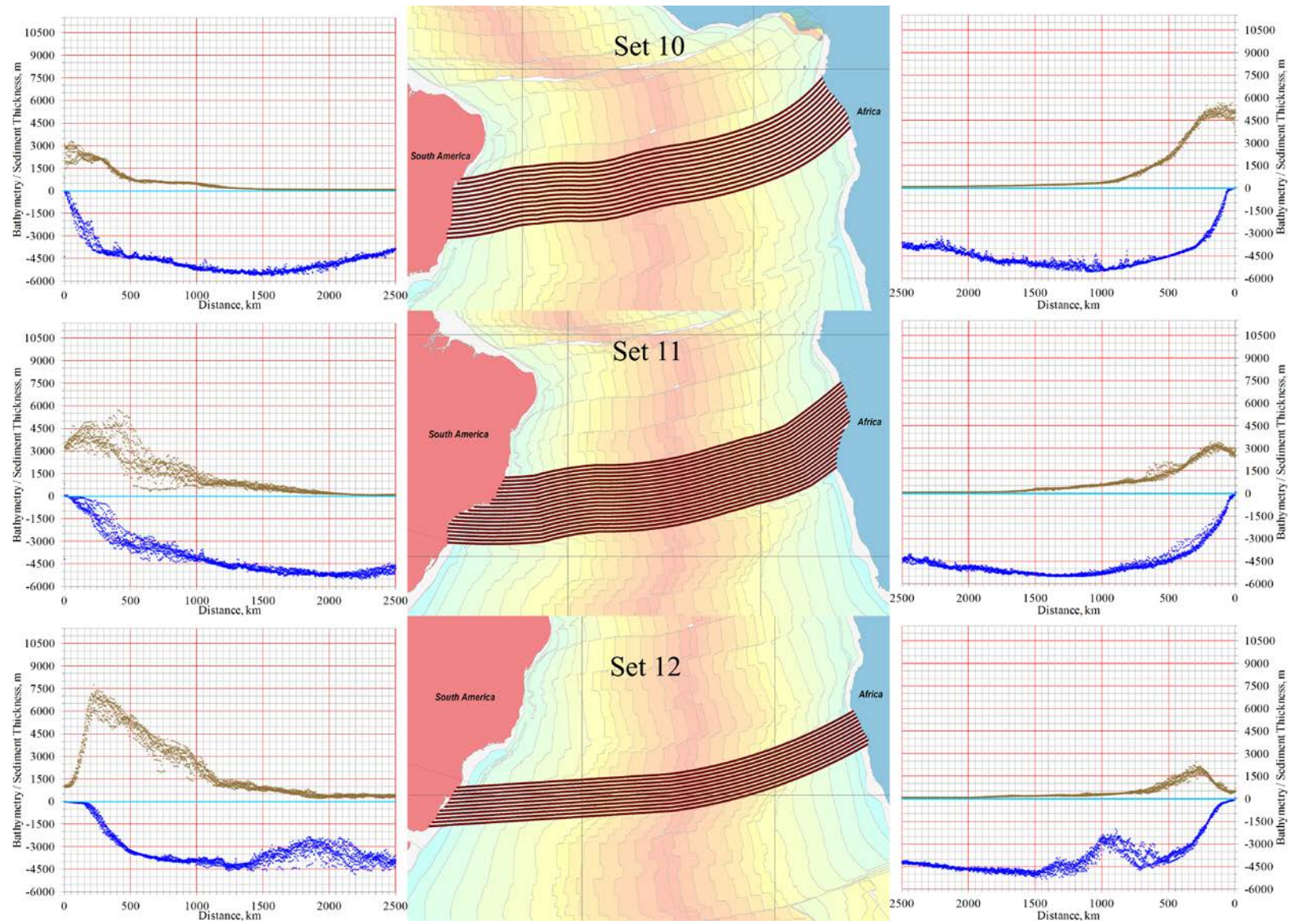


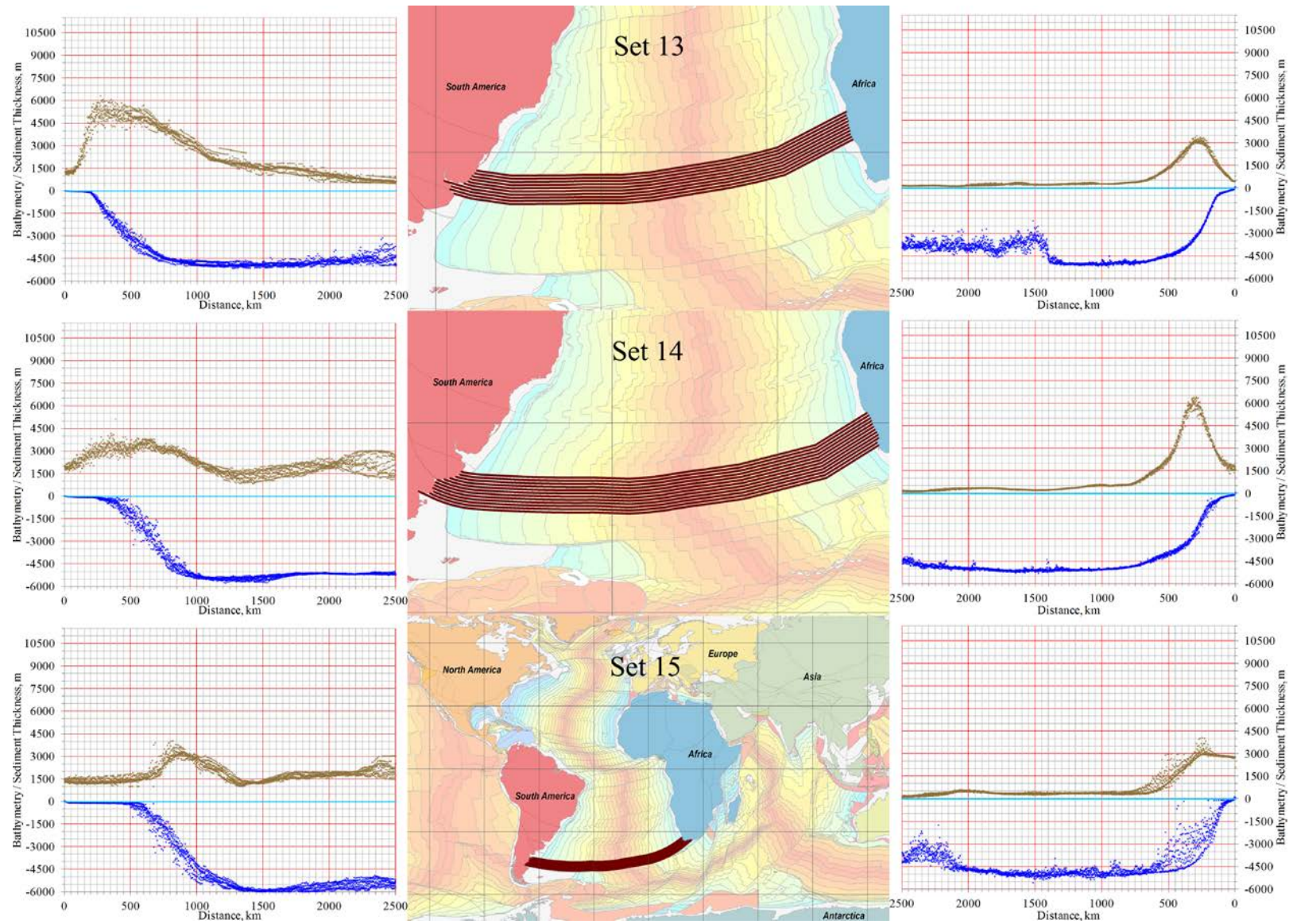
Figure S4: Selected shelf-slope-rise transects from the world's oceans (next 6 pages).











No Profile Here

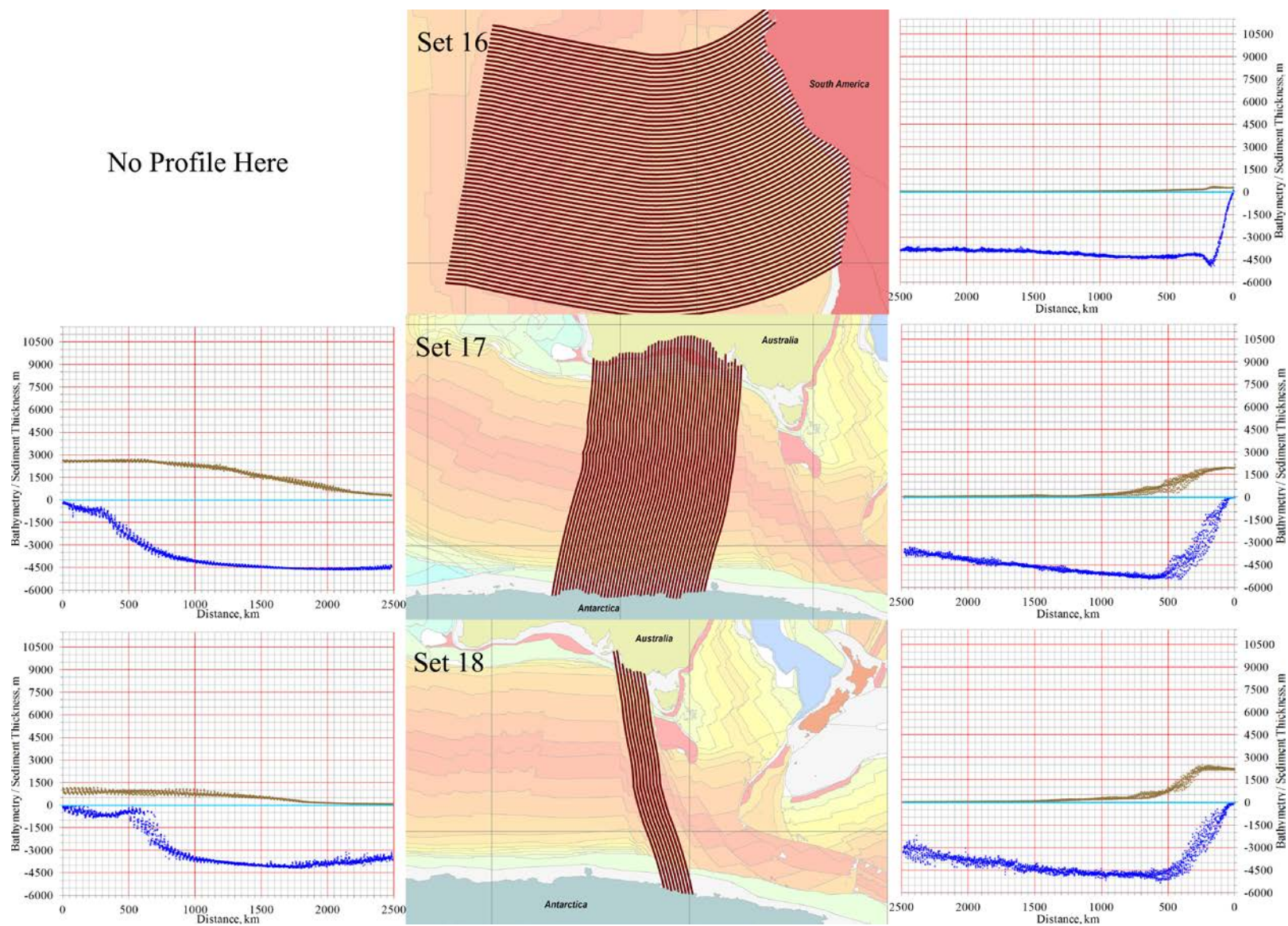


Figure S5: Observed slope gradients from the continental margins shown in Figure S4.

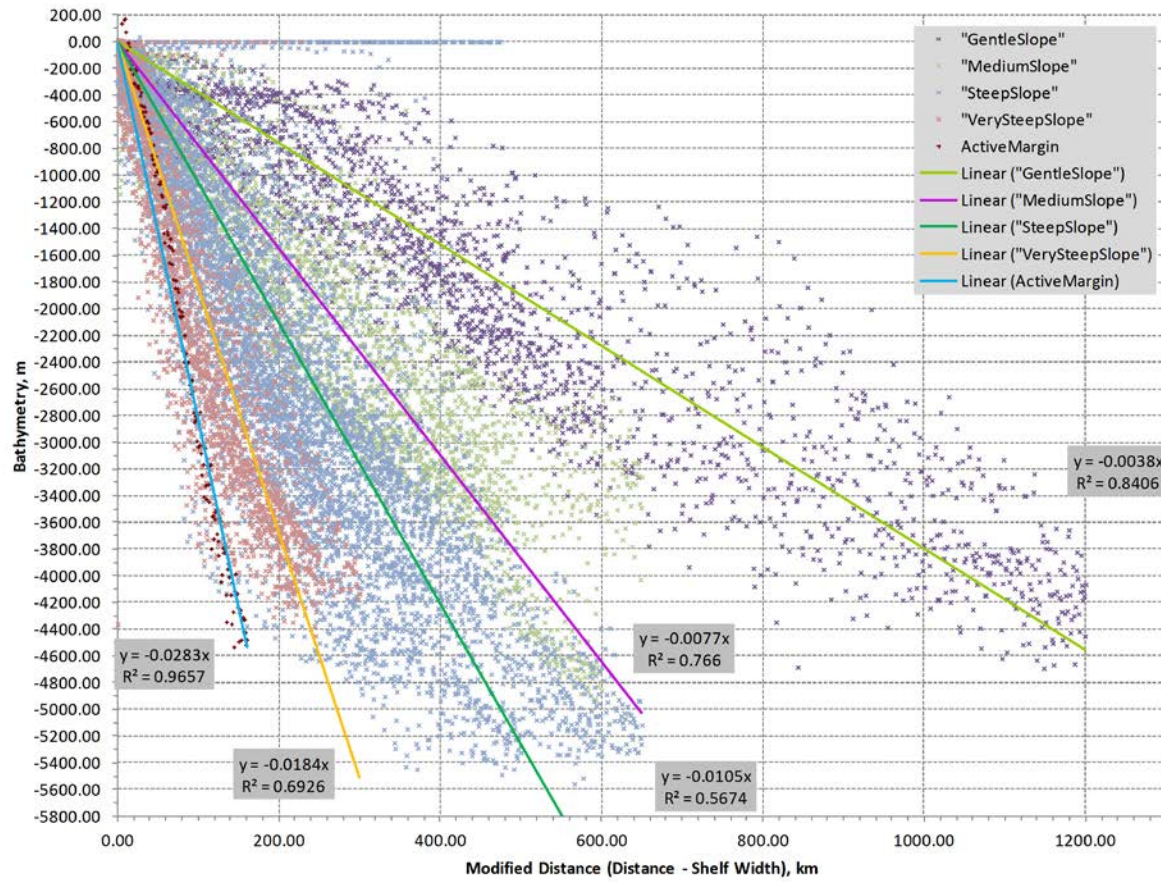


Figure S6: Difference between OES sediment thickness (Section 3.2) and global ocean sediment thickness of Divins (2003).

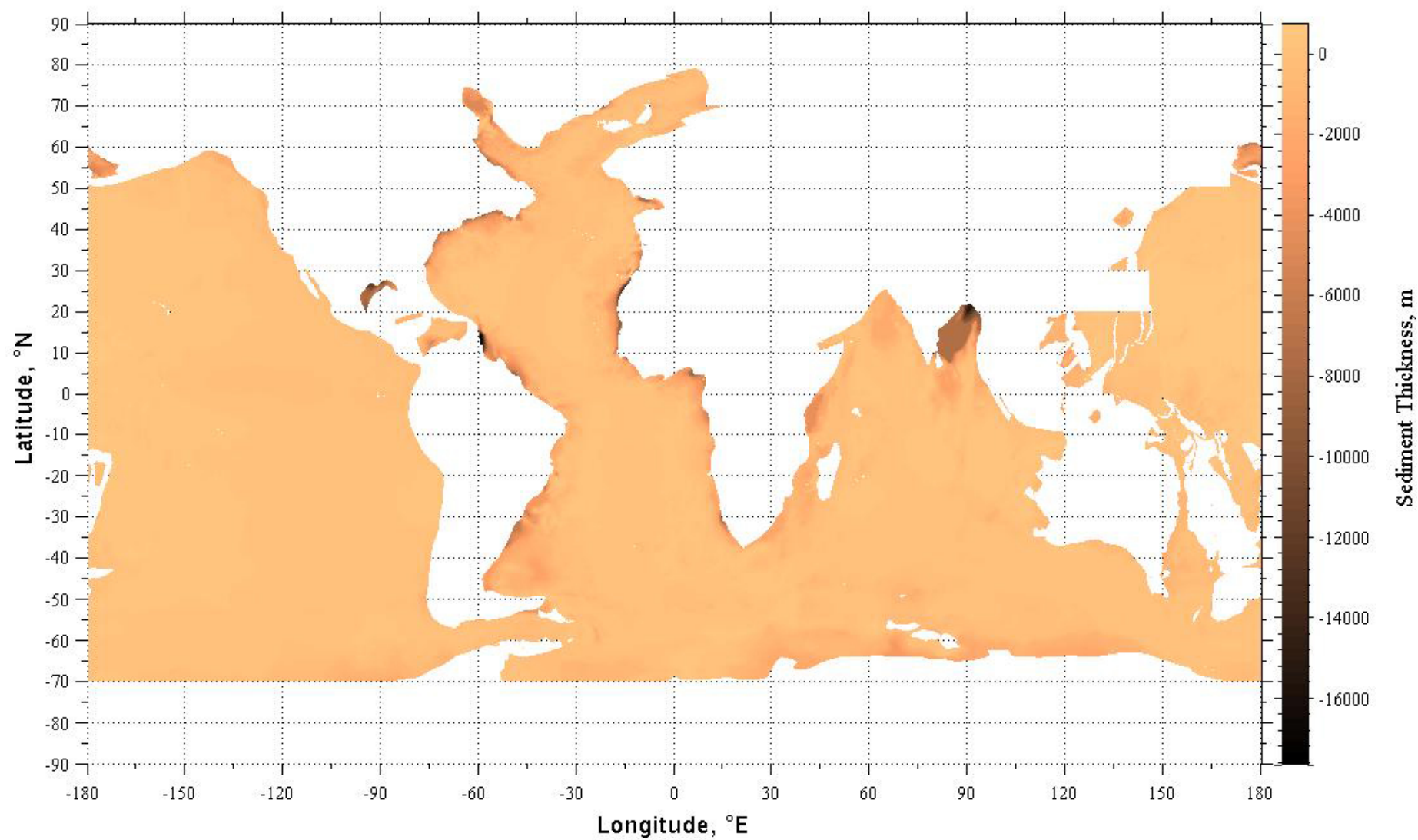
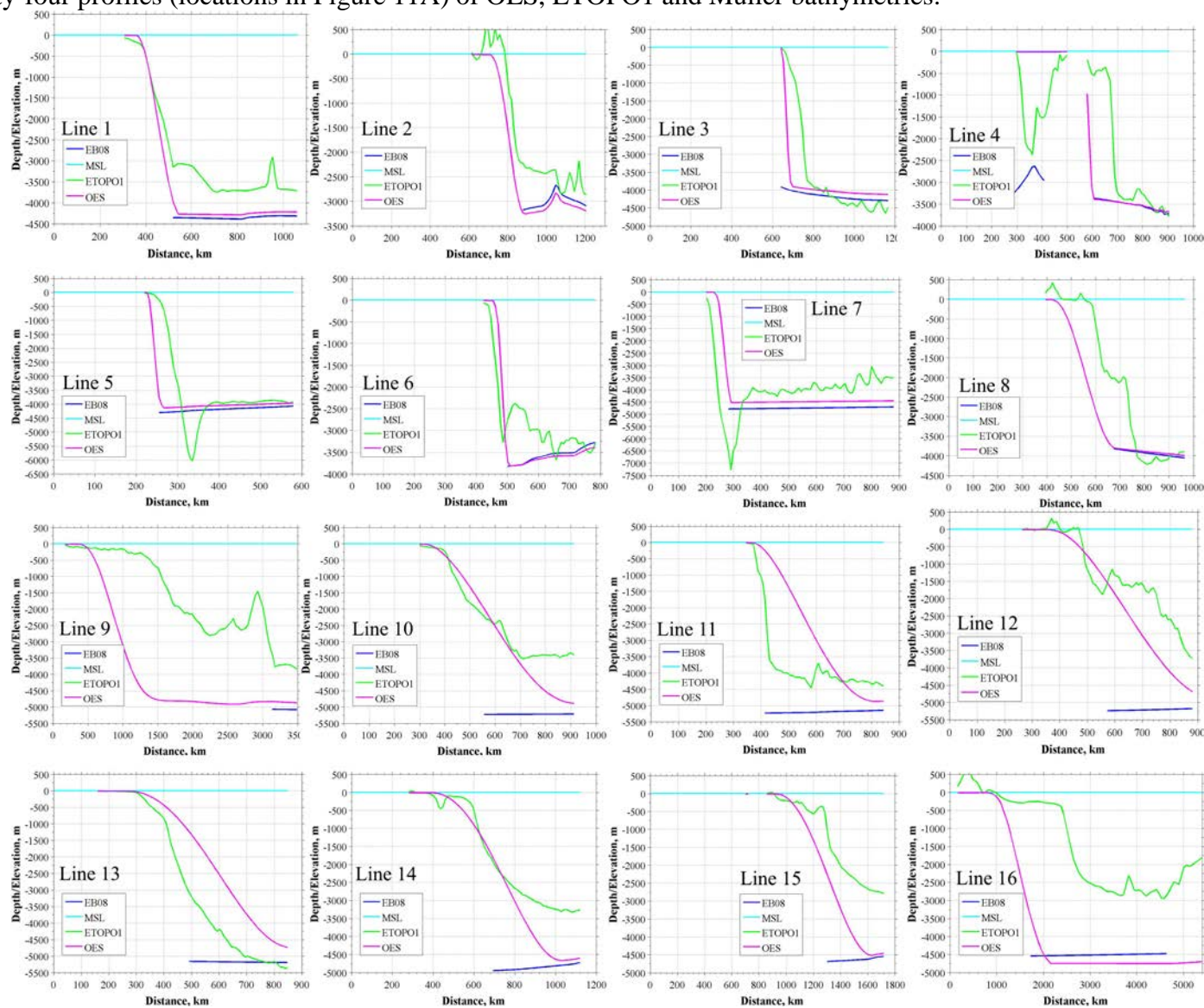
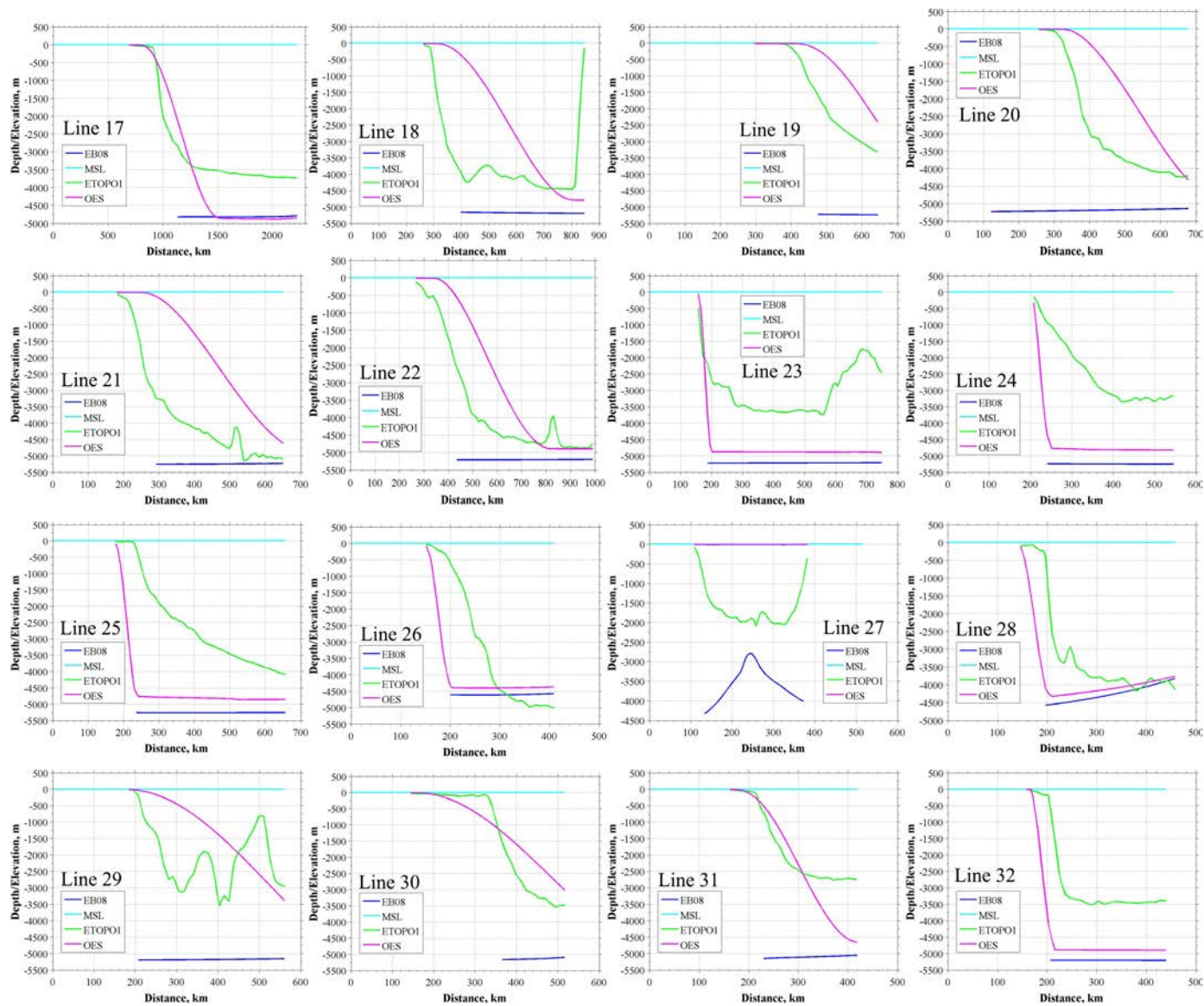
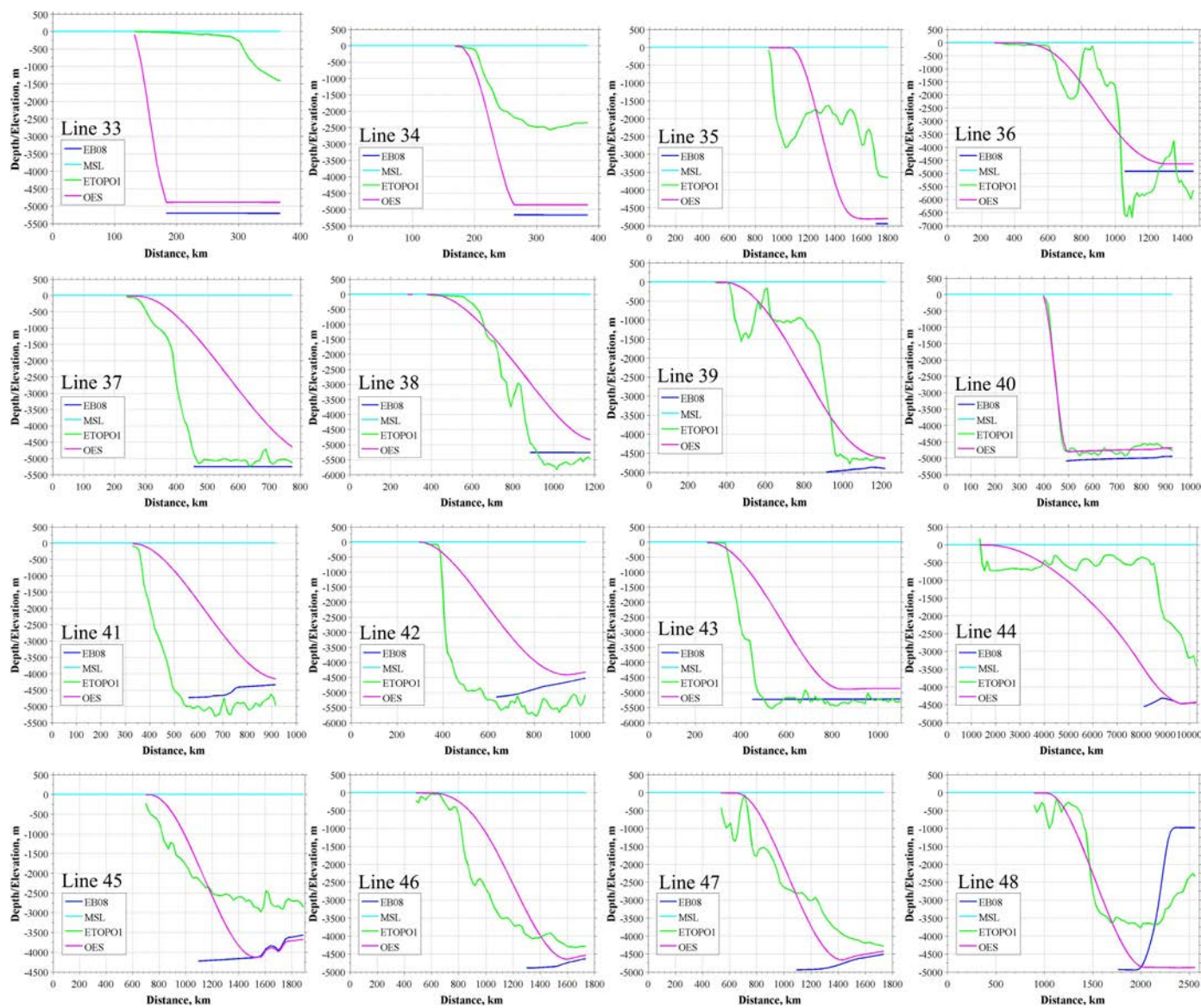


Figure S7: Sixty-four profiles (locations in Figure 11A) of OES, ETOPO1 and Muller bathymetries.







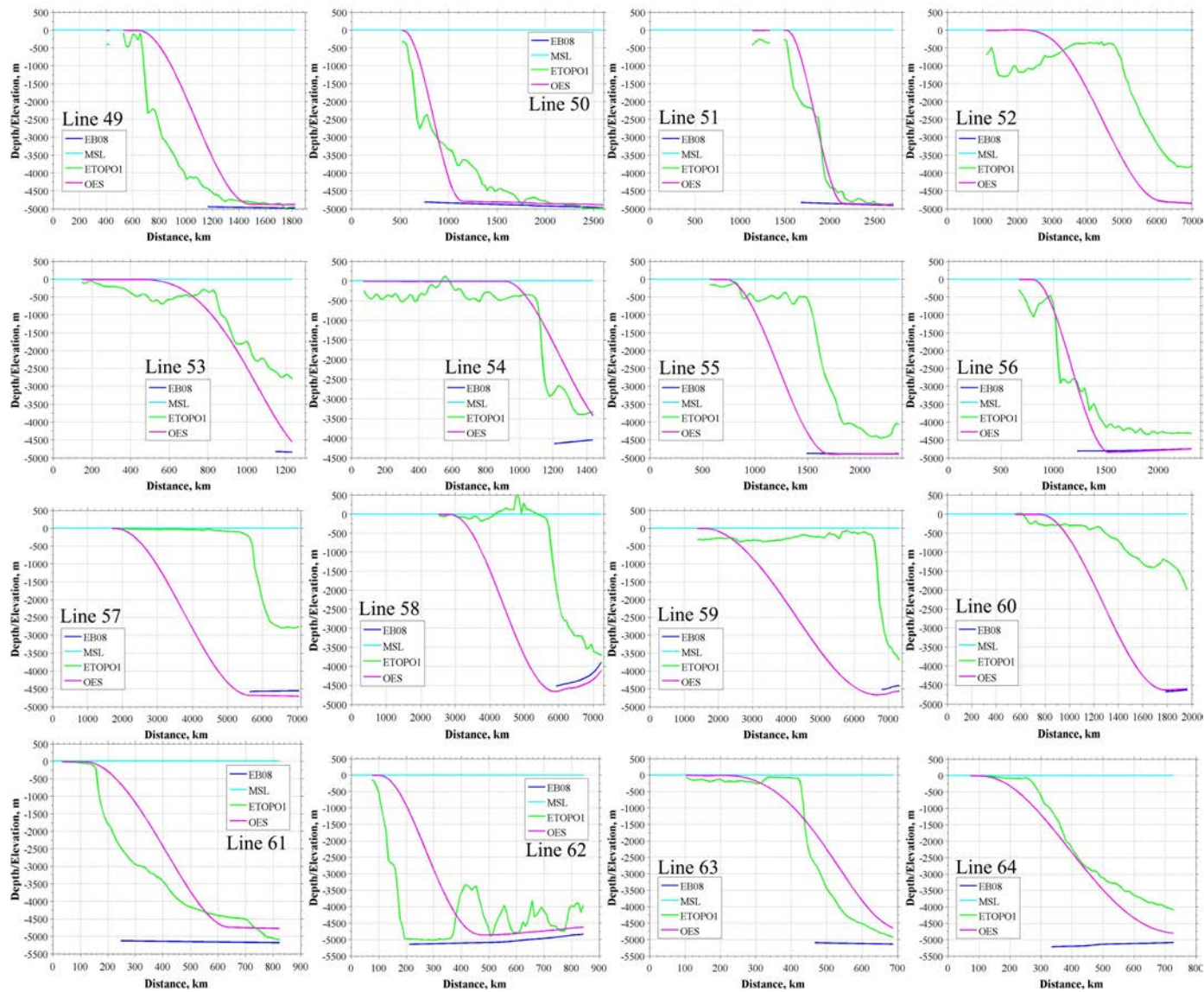


Figure S8: Residual bathymetries above +1000 m (A) and +2500 m (B) from Figure 12B.

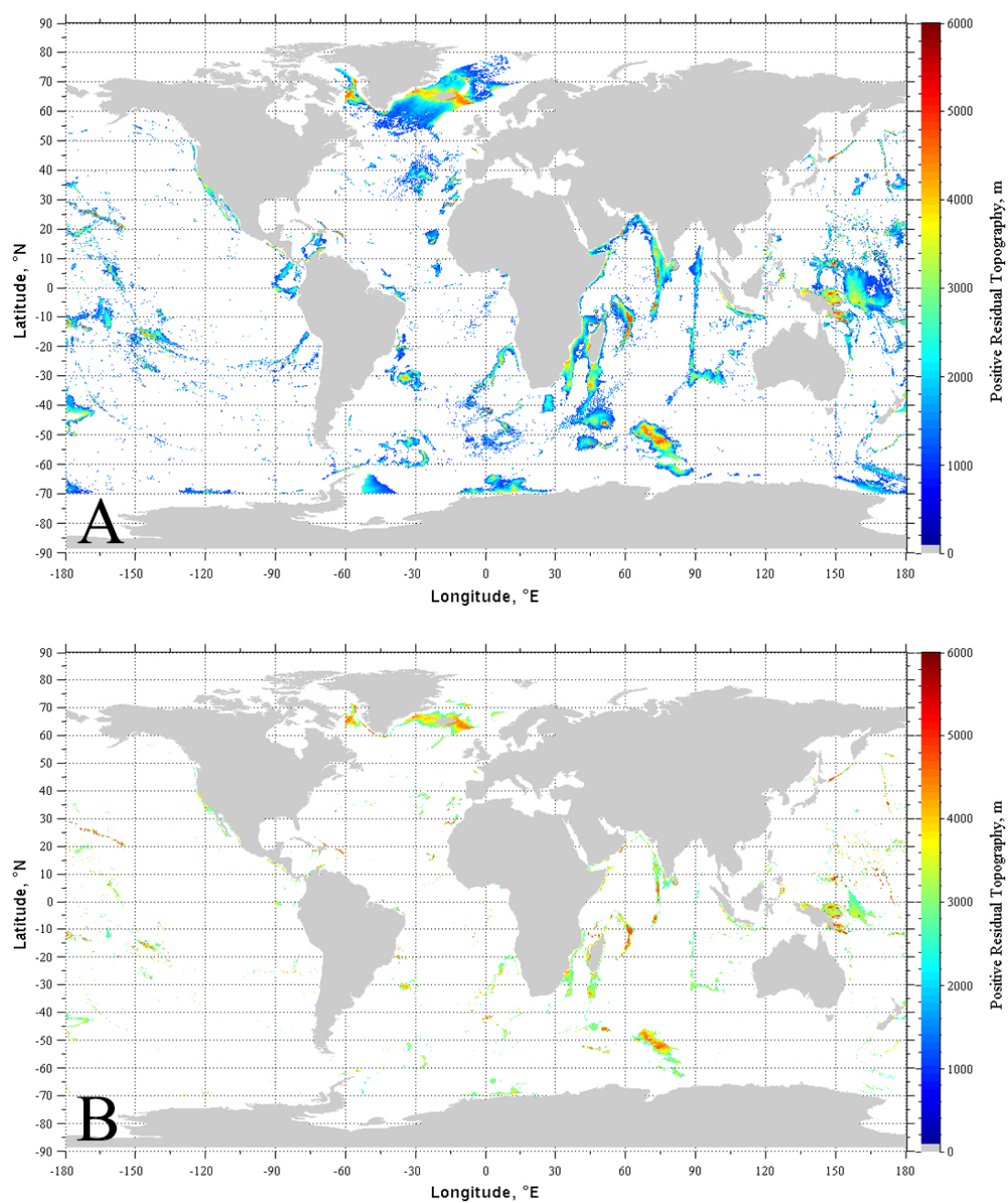


Figure S9: OESBathy Version 1.0 workflow .diagram. Scripts and codes attached with this document.

