

Response to Comments from Anonymous Referee #1

Although the model development work presented in this study does appear to improve the near surface temperature biases in the WRF model I found this analysis is quite superficial, unclearly motivated and lacking in detail with respect to the development work which was carried out. The inclusion of the sea ice thickness sensitivity experiments, again with little detail in the analysis, makes the manuscript feel unfocused. Most importantly however, it is not clear in what way the new model is different or better than the existing sea ice thermodynamic scheme.

We thank the Anonymous Referee #1 for the comments. Substantial revisions have been made to the manuscript according to the comments.

The WRF model has been widely used in polar researches but it only incorporates a simple sea ice scheme (Noah). Previous evaluations have found that this simplicity can lead a problem of energy imbalance in simulating the sea ice. Such an energy imbalance would limit the application of WRF model for regional climate simulation over polar region. To overcome this problem, a more complex thermodynamic sea ice which can better resolve the energy balance in sea ice should be utilized in the WRF model. HIGHTSI, a complex thermodynamic sea ice model, has a higher vertical resolution than Noah and considers the snow and ice processes in more details. For example, Noah would prevent the snow depth from falling below 0.01 m while HIGHTSI can treat the snow and bare-ice surface differently. More importantly, Noah does not include the process that account for the change in sea ice thickness. This would lead to energy imbalance when its simulation is specified with a time-dependent ice thickness. HIGHTSI overcomes this problem by including the ablation and accretion processes of sea ice and utilizing an interpolation step which can ensure heat conservation during its integration. The results from offline and online simulations both confirm the benefit from this advancement in HIGHTSI.

The differences between the new model and the original one have been clearly presented (Page 5, Line 14–25) and a table (Table 1) which summarizes these differences has been added in the revised manuscript. More analyses on the results from both the offline and online simulation have been presented in the revised manuscript to demonstrate the benefit from the advancement in the new model. The Introduction Section has been rephrased to better emphasize the importance of a reasonable sea ice simulation in current WRF model (Page 3, Line 5–11). For the sea ice thickness sensitivity experiments, Table 2 that summarize the setup of each simulation has been added. And more analyses on the ice thickness simulation by the sensitivity experiments have been presented in the manuscript.

In terms of the motivation for the study on pages 10308 and 10309: On the one hand the authors point out that significant development work has been done by the WRF community in developing a polar focussed version and which performs well. Then on the other hand state that because WRF was developed for the mid-latitudes it only has a simple sea ice thermodynamic model, without stating why one would expect this to be an important factor.

Previous development on Polar WRF includes the sea ice enhancement, but simplifications and lack of important thermodynamic processes still exist in current Polar WRF (version 3.6.1). These shortages in the WRF model can lead to problems of energy imbalance in snow and ice, which is an important issue in regional climate simulation. For example, the Noah sea ice scheme does not include the ice ablation and accretion processes and it prevent the snow depth from falling below 0.01 m. These can lead to the

imbalance of energy in snow and ice. Previous researches have suggested that a more advanced scheme for sea-ice and snow could be used to reduce the problem with surface energy balance in the Polar WRF model.

We have rephrased the presentation on the motivation part (Page 3, Line 5–11), and cited more references on this issue in the revised manuscript.

For example on Page 10309; Line 12-14: The authors state that they are looking to understand what role biases in the existing thermodynamic model plays in driving biases in the longwave budget. I cannot see which of the references describes this bias and cant see how the experiment they have run can answer this.

The study on the longwave budget would includes more issues besides the sea ice component. To keep more focussed on the sea ice improvements in this manuscript, the question on radiation budget would be answered in further researches.

This statement has been removed.

Other stated questions are “While a complex thermodynamic sea ice model can predict the change in sea ice thickness, the RCM might be able to predict the actual sea ice thickness.” The idea of using an atmosphere model coupled to a thermodynamic sea ice model in a predictive sense like this is inappropriate without taking into effect lateral fluxes of ice mass and I suggest removing all aspects of this discussion from the text.

We are sorry for the inappropriate statement here. Without a consideration of lateral fluxes of ice mass, the actual sea ice thickness could not be predicted by the thermodynamic sea ice model alone.

All the statements like this have been removed in the revised manuscript

The question “How is the sea ice thickness prescribed if a complex sea ice model is coupled to the RCM?” is an interesting topic but little is presented on these results.

To study the impact of different treatments of sea ice thickness, sensitivity experiments in which the sea ice thickness prescribed by different methods have been carried on. The empirical method is based on the relationship between sea ice concentration and sea ice thickness. This method could mimic the large-scale feature of the thickness distribution but lacks spatial details and seasonal variation. In this study, we introduced a method which is based on the complex thermodynamic sea ice model. The ablation and accretion processes of sea ice can be calculated by the sea ice model. This method initialize the sea ice thickness from the empirical estimation while the further change of ice thickness is predicted by the thermodynamic sea ice model itself. Compared to the purely empirical estimation, this method can better represent the tendency of seasonal change in sea ice thickness. However, this method depends on the initial guess of the ice thickness and the role of the dynamic processes. If the initial guess has already overestimate the sea ice thickness, a positive tendency of thickness change that introduced by this method could further enlarge this positive bias.

Detailed information on the sea ice thickness sensitivity experiment has been added in the revised manuscript (Page 11, Line 21–27). More analyses, especially those on the results from the new method, have been added in the revised manuscript.

Some very basic details of the HIGHTSI model itself and the coupling with WRF are missing. It is not stated in what ways HIGHTSI is different to the Noah model which is already coupled to WRF. Other details such as the frequency of the coupling timestep or the number of levels in the new thermodynamic model are not stated.

Compared with the Noah sea ice, HIGHTSI is more complex and shows advantages on several aspects. First, HIGHTSI has more vertical layers for both snow and ice than Noah, which means the vertical profile of temperature within snow and ice can be represented in greater detail in HIGHTSI than in Noah. Moreover, the surface and basal accretion and ablation processes of sea ice are included in HIGHTSI. Unlike Noah in which the sea ice thickness has to be specified, HIGHTSI can predict the thermodynamic change in sea ice thickness. A self adapted ice thickness is crucial for the conservation of energy in sea ice. When the ice thickness is kept constant or specified inappropriately, a misrepresentation of energy balance would be happened. Another problem that has been found in Noah is the treatment of surface characteristics. The Noah assumes that the surface of sea ice is always covered by snow, and a lower bound of 0.01 m is set to prevent the snow from becoming too thin. This assumption could lead to problems of energy imbalance in the simulation of sea ice by Noah. HIGHTSI, on the other hand, includes different treatment for the snow and bare-ice surface. When the snow is thin or melted, the solar radiance penetrated into the ice could further heat and melt the ice. These processes are also included in HIGHTSI.

The above description of HIGHTSI and Noah have been added to the revised manuscript (Page 5, Line 14–25). To summarize the differences between HIGHTSI and Noah, Table 1 which summarizes the differences between Noah and HIGHTSI has been added to the revised manuscript.

The HIGHTSI is coupled at every time step in the WRF model. There are 10 levels for snow and 20 for ice.

Information on the details of model setup has been added to the revised manuscript (Page 5, Line 11–12; Page 6, Line 17–18)

Response to Comments from Anonymous Referee #2

Currently the regional climate models (RCM) and the operational numerical weather prediction (NWP) models applied simple sea ice scheme as boundary module. Any research activity toward better representation of sea ice scheme in RCM and NWP deserves attention and encouragement. I believe work done in this MS belongs to this category. Overall, I see descriptions of work are clear and easy to follow. However, the analyses of the results suffer various kinds of structural and technical problems and some proper physical interpretations are missing.

We thank the Anonymous Referee #2 for the comments. Your time and effort is highly appreciated.

Substantial revisions have been made to the manuscript according to the comments. The structure of the manuscript has been adjusted and more detailed information has been added to the manuscript. We have included more analyses on the physical interpretation for the results simulated in both offline and online simulations.

I can tell authors made a lot of review in this section, but still I would like to see authors provide a more explicit and clear motivation of this study, i.e. why do we need to improve sea ice scheme in WRF? What are the expected and added values of WRF overall?

We thank the referee for this helpful suggestion.

The WRF model has been widely used in polar researches but it only incorporates a simple sea ice scheme. Previous evaluations have found that this simplicity can lead to a problem of energy imbalance in simulating the sea ice. Such an energy imbalance would limit the application of WRF model for regional climate simulation over polar region. To make the WRF model more suitable for polar climate simulation, there is a need to improve the sea ice scheme in WRF. Due to the large number of WRF users, the development work on the WRF model would benefit a wide range of researches.

We have rephrased the presentation of the motivation of this study in the revised manuscript (Page 2, Line 27–31; Page 3, Line 5–11).

Section 2.3 presents setup for online simulations and a study domain is given as Figure 2, while Figure 1 is presented after Figure. 2. This is quite odd. I suggest authors revise the structure of the MS and make the text flow more smooth and logic.

We thank the referee for the suggestion.

We have adjusted the structure of the manuscript. The section on the setup for online simulation has been fitted into the section on online simulation.

Why Noah provided cold bias of ice temperature? Authors stated "the snow depth simulated in Noah is considerably higher than the observation, which can lead to cold bias in the snow layer and upper part of sea ice" But what could be the physical reason behind this phenomenon? When snow layer is thick, it will introduce strong insulate effect so the ice temperature should be warmer.

The thicker snow would warm the sea ice, but this only showed small impact on the result of this simulation. We performed a sensitivity experiment in which the snow depth and surface temperature in Noah

is specified with the SHEBA observation. The bias still exists in this simulation, implying that the snow processes do not play a role in the underestimation of sea ice temperature.

We've found that the cold bias in winter is mainly caused by the imbalance of energy in sea ice. Noah does not include the ablation and accretion processes and the sea ice thickness in Noah has to be specified. The imbalance of energy in sea ice happens when the ice thickness changes. Since Noah applies the sigma-coordinate for the grid system, the temperature at each sigma level will not change although the sigma level is actually representing a different depth after the change in ice thickness. Such a problem of energy imbalance imposes a pseudo cooling effect when the ice grows thicker in winter and a pseudo warming effect when the ice becomes thinner in summer.

The explanation of the cold bias in Noah has been added to the revised manuscript (Page 7, Line 23–27).

How snow is simulated in Noah and HIGHTSI? What kind of external forcing both models applied? Since manuscript targets geoscientific model development, some more modelling technical details should be given.

Noah uses a single layer snow and assumes its depth not to below 0.01 m. HIGHTSI has multiple layers for the snow and number of snow layers is 10 in this study. Noah fixed the snow density at 0.3 kg/m^3 and this lead to an overestimation of simulated snow depth in winter. HIGHTSI, on the other hand, can well simulate the snow depth.

The surface pressure, 10 m air temperature, humidity and wind speed, precipitation, downward longwave and shortwave radiation, and ocean heat flux from SHEBA are used to drive the two offline simulations.

We have added more detailed information on the snow simulation in both Noah and HIGHTSI (Page 7, Line 2–4). And a table summarizing the differences between Noah and HIGHTSI has been added in the revised manuscript (Table 1). Details of the external forcing have been added and a paper describing the forcing dataset has also been cited in the revised manuscript (Page 6, Line 20–22).

I feel that early section “model setup” should be fitted here for better clarity.

We thank the referee for this suggestion.

The early section “model setup” has been fitted here.

Authors claim “Both WRF-Noah and WRF-HIGHTSI overestimate the sea ice albedo due to the simulation of a too early snow melting over sea ice and the lack of melt-pond effect in summer. While the empirical estimate of sea ice albedo in WRF-Noah is better tuned for the summer sea ice in the Arctic (Bromwich et al., 2009), the higher upward shortwave radiation in WRF-HIGHTSI results from the overestimation of sea ice albedo”

Are you sure about this? I don't quite understand why “overestimate the sea ice albedo due to the simulation of a too early snow melting over sea ice” When snow melts it will trigger the positive feedback mechanism, i.e. melting will reduce the surface albedo and further enhance the melting. So too early snow melting will make the surface albedo smaller, why overestimate?

We apologize for the error here. It should be “the simulation of a too late snow melting” due to the underestimation of the downward radiation. The too late snow melting caused the overestimation of the albedo.

This statement has been revised. The word “early” has been changed to “late”.

In section 2.2 authors started “the sea ice albedo scheme used in HIGHTSI is the same as the “CCSM” scheme used in the Community ICE Model (CICE) model (Collins et al., 2006). This scheme empirically estimates the albedo based on surface temperature, surface air temperature, snow cover and ice thickness” It seems to me that HIGHTSI applied quite advanced surface albedo scheme. Here you claim such albedo scheme overestimates the sea ice albedo?

Yes, the CCSM albedo scheme used in this study does not include the input of depth of melt pond, thus it only considers the effect of melt pond implicitly through its relationship with surface temperature.

We have added the relevant demonstration of melt pond treatment by the CCSM albedo scheme to the manuscript (Page 5, Line 26–28; Page 10, Line 3–7).

Why apply a prescribed ice thickness for WRF-HIGHTSI? Is this because you run the WRF-HIGHTSI for 2D domain? What happen if you let HIGHTSI to calculate the ice thickens or is it even possible to do like this?

The WRF-HIGHTSI does calculate the ice thickness change. And the integral interpolation method which is energy conservative is also utilized at each integration step. These are the advantages of HIGHTSI and they are included in the WRF-HIGHTSI to better resolve the energy balance in sea ice. However, HIGHTSI only considers the ablation and accretion processes and may give rise to a biased result when neglecting the effect from lateral flux of ice mass. To reduce this bias, a further step that will correct the simulation of thickness with PIOMAS data is performed.

We have added the above explanation in the revised manuscript (Page 8, Line 15–23).

A prescribed ice thickness in RCM or NWP models is part of the current simplicity and this is a challenge needs to be solved in model development. The current work gives me an impression that WRF-HIGHTSI has a limited value toward big improvement of this aspect even though HIGHTSI is capable to simulate the ice thickness. Can authors provide any recommendations on how to improve this part in the future WRF-HIGHTSI development?

We agree with the referee on the point that the treatment of ice thickness is an important issue in current RCM and NWP models. Sensitivity experiments with different sea ice treatments were performed in this study. Based on the results from the sensitivity experiments, we have found that the HIGHTSI can represent the tendency of thickness variation. But the result is dependant on the initial guess of the sea ice thickness, especially for the perennial sea ice. For seasonal ice , the performance could also be limited if dynamic process played a role.

We have addressed the above explanations in the revised manuscript (Page 12, Line 8–14). For the future work, we recommend the development of an air-sea-ice coupled modelling system which can include the ice dynamic processes and interactive ocean component (Page 14, Line 8–9).

In various parts of the MS authors specifically argued the importance of ice dynamics to the change of sea ice thickness. What is the role of ocean? How important the ice-ocean interaction can affect the sea ice thickness?

We thank the referee for the comment.

The ocean heat flux can influence the basal accretion and ablation processes of sea ice. And the ocean can influence the drift of sea ice. Ice-ocean interaction is important for a realistic simulation of sea ice thickness. For example, the sea ice thickness over Bering Sea can be significantly influenced by the ice-ocean interaction. Previous researches have found that the dynamic and thermodynamic processes have opposite signs in the thickness tendency and nearly cancel each other.

We have added the relevant presentations on the role of ocean in the revised manuscript (Page 11, Line 23–24; Page 12, Line 16–18).

In one model experiment (THERM), where sea ice thickness was calculated by HIGHTSI, what was the ocean boundary condition applied in this model experiment setup? Why WRF-HIGHTSI in this case can provide smaller bias for seasonal sea ice but larger bias for the annual ice thickness? A better air-ice coupling should make the atmosphere boundary layer (ABL) forcing more accurate for ice modelling, so I expect HIGHTSI yields better ice thickness

We thank the referee for the comment.

Ocean heat flux from PIOMAS is used as the ocean boundary condition.

Besides the calculation by HIGHTSI, the simulation of sea ice thickness also relies on the initial guess that derived from the empirical estimation. For seasonal sea ice, the initial guess is close to the observation in autumn but becomes smaller than the observation in winter. THERM could provide a better result than PARAM due to the introduction of thickening trend during winter. For perennial sea ice, the initial guess is already thicker than the observation. The thickening trend introduced by HIGHTSI would further enlarge this positive bias. Thus a better simulation of perennial sea ice thickness might be possible in HIGHTSI if a more realistic initial guess is provided.

The above explanations for the bias in thickness simulation have been added to the revised manuscript (Page 11, Line 23–24; Page 12, Line 5–14).

The figure presentations are in general good, but the figure captures can still largely improved, e.g. in Fig. 7 (left) (mid) (bottom) expression is difficult to understand.

Captions have been revised for Fig. 5 and Fig. 7 in the revised manuscript.

Figure 2 shows the model domain, while the results in Figure 5 and 7 have apparently a different domain why?

The error in Figure 2 has been revised in the revised manuscript.

Authors applied a lot acronyms, it would be better to specify them in a Table.

We thank the referee for the suggestion.

We have added a table summarizing the acronym and setup of each sensitivity experiment in the revised manuscript.

Improving the WRF model's (version 3.6.1) simulation over sea ice surface through coupling with a complex thermodynamic sea ice model (HIGHTSI)

Y. Yao, J. Huang, Y. Luo, and Z. Zhao

Ministry of Education Key Laboratory for Earth System Modeling, Center for Earth System Science, Tsinghua University, Beijing, China

Correspondence to: J. Huang (jbh@tsinghua.edu.cn)

Abstract. Sea ice plays an important role in the air–ice–ocean interaction, but it is often represented simply in many regional atmospheric models. The Noah sea ice ~~model, which has been widely used in the~~ scheme, which is the only option in current Weather Research and Forecasting (WRF) model ~~, exhibits cold bias in simulating the Arctic sea ice temperature when validated~~ (version 3.6.1), has a problem of energy imbalance due to its simplification in snow processes and lack of ablation and accretion processes in ice. Validated against the Surface Heat Budget of the Arctic Ocean (SHEBA) in situ observations. ~~According to sensitivity tests,~~ Noah underestimates the sea ice temperature which can reach to -10°C in winter. Sensitivity tests show that this bias is ~~attributed not only mainly attributed~~ attributed to the simulation ~~of snow depth and turbulent fluxes but also to the heat conduction within snow and ice~~ within the ice when a time-dependent ice thickness is specified. Compared with the Noah sea ice model, the high-resolution thermodynamic snow and ice model (HIGHTSI) ~~has smaller bias in simulating the~~ uses more realistic thermodynamics for snow and ice. Most importantly, HIGHTSI includes the ablation and accretion processes of sea ice and uses an interpolation method which can ensure the heat conservation during its integration. These allow the HIGHTSI to better resolve the energy balance in the sea ice, and the bias in sea ice ~~temperature. HIGHTSI is further coupled with the WRF model to evaluate the possible added value from better resolving the heat transport and solar penetration in sea ice from a complex thermodynamic sea ice model. The cold bias in simulating the surface temperature over sea ice in~~ temperature is reduced considerably. When HIGHTSI is coupled with the WRF model, and this also leads to a better representation of surface ~~the simulation of sea ice~~ temperature by the original Polar WRF is greatly improved. Considering the bias with reference to SHEBA observations, WRF-HIGHTSI improves the simulation of surface temperature, 2 m air temperature and surface ~~and 2 air temperature~~ flux in winter by 6°C , 5°C , and 20 W/m^2 , respectively. A discussion on the impact of specifying 20 sea ice thickness in the WRF model is presented. Consistent with previous research, prescribing the sea ice thickness with observational information would result in the best simulation among the available methods. If no observational information is available, ~~using an empirical method based on the relationship between sea ice concentration and sea ice thickness could mimic the large-scale spatial feature of sea ice thickness. The potential application of a~~ we present a new method in which the sea ice thickness is initialized from empirical estimation and its further change is predicted by a complex thermodynamic 25 sea ice model ~~in predicting the change in sea ice thickness in a RCM is limited by the lack of sea ice dynamic processes in the~~

~~model and the coarse assumption on the initial value of sea ice thickness.~~ The ice thickness simulated by this method depends much on the quality of initial guess of the ice thickness and the role of the ice dynamic processes.

1 Introduction

Regional climate models (RCMs) are useful tools for understanding the processes in the polar climate system, and they have been widely used to provide detailed projections of future climate change over polar regions. As part of the Coordinated Regional Downscaling Experiment (CORDEX), the Polar-CORDEX will provide ensembles of climate simulations over the Arctic and Antarctic domains from different modeling groups around the world (Koenigk et al., 2015). The results from Polar-CORDEX are supposed to be analyzed by researchers from various disciplines, and further studies such as climate impact and adaptation in the polar region would be conducted based on these simulation results. Increasingly more modeling groups have participated in Polar-CORDEX, and the development of RCMs suitable for polar climate simulations have aroused interests within the modeling community.

Although climate models have become more sophisticated, climate simulation over the polar region remains a formidable challenge (Notz, 2012; Bourassa et al., 2013). The surface radiance budget, which exhibits marked seasonal differences between summer and winter and plays an important role in the polar climate system, has been erroneously represented in climate models for a long time (Sorteberg et al., 2007; Tjernström et al., 2008; Barton et al., 2014). From a perspective from the top of the atmosphere to the surface, researchers have attributed the bias of the surface radiation budget to the poor ability of models to properly represent both the cloud radiation effect and the stable boundary layer (Wyser et al., 2007; Vihma and Pirazzini, 2005). The Arctic cloud, particularly the mixed-phase low cloud, is misrepresented in current state-of-the-art climate models (Pithan et al., 2013; English et al., 2015). Simulating the stable boundary layer is limited not only by the relatively coarse resolution (Steenefeld et al., 2006) but also by the lack of realistic representations of small-scale physical processes, such as turbulent mixing and snow-surface coupling (Sterk et al., 2013). ~~Moreover~~As a result, considerable effort has been devoted to evaluating and improving the microphysics and boundary layer parameterizations (e.g., Wang and Liu, 2014; Andreas et al., 2010).

~~Sea~~Besides the cloud and boundary layer processes, sea ice, which distinguishes the polar climate system from other parts of the earth system, ~~often lacks detailed treatment in current RCMs~~is also an essential factor for a realistic simulation of polar climate. When the ocean is covered by sea ice, the exchange of heat between air and sea and the penetration of solar radiation differ significantly from those over open water. Acting as a medium between air and sea, sea ice plays an important role in the surface energy balance over the polar region (Jin et al., 1994). Thus, a realistic simulation of the polar climate requires sea ice to be appropriately considered in the RCMs. Coupled RCMs, including interactive ocean and sea ice models, have shown benefits from a better representation of the air–ice–ocean interaction (Dorn et al., 2009). However, the relatively large resources that are required to construct the coupled modeling system and the insufficient simulation of feedbacks between the model components have limited the use of coupled RCMs (Dorn et al., 2012). To meet the urgent needs of researches and applications from different fields, atmospheric-only RCMs are still widely used in simulations of the polar climate. In these

models, sea surface temperature, ~~sea ice concentration~~ and sea ice ~~thickness~~ concentration have to be specified. ~~Sensitivity experiments based on regional atmospheric models have shown that properly specifying the sea ice thickness and snow on ice have a considerable impact on the simulation of surface temperature (Rinke et al., 2006; Hines et al., 2015). Moreover, physical properties such as sea ice temperature are considered, and the surface properties of sea ice are determined by thermodynamic~~
5 ~~sea ice models to provide lower boundary conditions. However, the sea ice models incorporated in current RCMs often lacks~~ detailed treatments of thermodynamic processes. As the lower boundary condition for the atmospheric model. Thus, a failure in the energy conservation in the, the simplified thermodynamic sea ice model can lead to bias of the surface energy balance in long-term climate simulations (Bitz and Lipscomb, 1999). However, evaluations of the performance of the thermodynamic sea ice model within RCMs are limited, could exert biased forcing to the atmosphere (Valkonen et al., 2014). To overcome
10 this problem, efforts have been made in order to better represent the sea ice in RCMs. For example, studies have shown that properly specifying the sea ice thickness and snow on ice have a considerable impact on the simulation of surface temperature (Rinke et al., 2006; Hines et al., 2015).

Among the atmospheric-only RCMs, the Weather Research and Forecasting (WRF) model, along with its polar-optimized version (Polar WRF), has been widely used in polar climate simulations. Previous evaluations have shown that the WRF
15 model can reasonably simulate climatological features of the Arctic atmosphere (Cassano et al., 2011). Additionally, physical credibility has been found in simulating extreme precipitation over CORDEX Arctic from a long-term climate simulation based on the WRF model (Glisan and Gutowski, 2014a, b). Moreover, the modifications included in the Polar WRF model have been validated against various observations in Greenland (Hines and Bromwich, 2008), the Arctic Ocean (Bromwich et al., 2009), Arctic land (Hines et al., 2011), and the Antarctic (Bromwich et al., 2013). In addition to the above validations, the open access
20 of the WRF model has made it widely applied in polar researches by a large number of users.

~~Because the WRF model was originally developed for simulations in mid-latitudes, processes associated with sea ice are described by~~ Despite of the previous sea ice enhancements that have already been included in the Polar WRF model (Bromwich et al., 2009; Hines et al., 2015), a simplified thermodynamic sea ice model incorporated in the Noah surface scheme within
25 the WRF model (Noah scheme) is still the only option to describe sea ice status. This means simplifications and lack of important thermodynamic processes exist in current WRF and Polar WRF (version 3.6.1). These shortages in the model can lead to a problem of energy imbalance in snow and ice, which is an important issue in regional climate simulation. For example, the Noah sea ice scheme does not include the ice ablation and accretion processes and it prevents the snow depth from falling below 0.01 m. These can lead to a problem of energy imbalance in snow and ice (Valkonen et al., 2014), and a more advanced scheme for sea-ice and snow should be used to improve the simulation. Currently, there are few evaluations on the performance
30 of a simplified sea ice model when it is used as part of a RCM during long-term climate simulations. How well does Noah sea ice within the WRF model represent the long-term evolution of sea ice status? ~~If bias exists in the sea ice simulation by Noah, its contribution to the bias previously found in the surface radiation budget needs to be accounted for~~ Due to the large number of WRF users, a further development of the WRF model would benefit a wide range of researches. To improve the simulation over the polar region by the WRF model, it is worth testing the possible added value from coupling a complex thermodynamic
35 sea ice model. Can the simulation over the sea ice surface benefit from a more realistic simulation of sea ice thermodynamics?

As mentioned above, additional information on sea ice thickness needs to be specified when the atmospheric-only RCM is used in polar climate simulations. ~~While a complex thermodynamic sea ice model can predict the change in sea ice thickness, the RCM might be able to predict the actual sea ice thickness.~~ How is the sea ice thickness prescribed if a complex sea ice model is coupled to the RCM? This study is conducted based on the above questions.

5 In this study, the Noah sea ice model is compared with a high-resolution thermodynamic snow and ice model (HIGHTSI). The offline simulations of the sea ice temperature evolution using these two sea ice models are evaluated in Sect. 3. The HIGHTSI is then coupled to the WRF model, and the coupled simulations based on Noah and the HIGHTSI sea ice model are compared in Sect. 4. The evaluation is primarily focused on the simulation over the sea ice surface to determine whether coupling a complex thermodynamic sea ice model would be beneficial for regional climate simulations. In Sect. 5, we present
10 a discussion on how to prescribe the sea thickness in an atmospheric-only regional climate simulation.

2 Models and data

2.1 WRF

The WRF model is a state-of-the-art mesoscale numerical model designed for both research and operations. It is primarily maintained by the National Centers for Atmospheric Research (NCAR) and developed by collaborative efforts from the
15 community. The WRF model has been widely used in climate simulations, and its applications in the polar region have also provided useful information (Liu et al., 2014). Polar WRF is a polar-optimized version released after the standard WRF model. Modifications such as fractional sea ice and optimized surface energy balance over land ice and sea ice enabled the model to better simulate the polar climate (Hines and Bromwich, 2008). Moreover, some of these changes have already been added to recent versions of standard WRF releases.

20 In both WRF and Polar WRF, a simplified thermodynamic sea ice model that is included in the Noah land surface model is used to determine the sea ice-related properties, such as sea ice temperature and turbulent fluxes. The Noah sea ice module incorporated in WRF contains 4-layer ice together with a single-layer snow pack model. The ice growing and ablation processes are not included in Noah, and thus, the sea ice thickness must be specified. The default value for sea ice thickness is 3 m everywhere in the WRF model, and this value can be prescribed from other sources in the same way as sea ice concentration
25 such that the spatial and temporal variations of sea ice thickness can be taken into account (Hines et al., 2015). The sea ice surface is assumed to always be covered by snow in Noah, and a lower bound (default is 0.01 m) for snow depth has to be prescribed. Under this assumption, the surface energy balance would always be evaluated over a snow surface. The solar radiation is allowed to be absorbed only by the snow layer; thus, no solar penetration into the ice is considered.

There are three schemes for treating the sea ice albedo in the Noah sea ice module. One is a fixed value for the albedo; thus,
30 seasonal variation and spatial distribution would not be taken into consideration. Another scheme uses the observed albedo through additional input data. The other scheme, which estimates the albedo as a function of surface temperature, is used in this study. Previous studies have shown that this empirical estimation of sea ice albedo could provide a result close to that obtained from observations in the Arctic during the summer melt season (Bromwich et al., 2009).

2.2 HIGHTSI

HIGHTSI was initially designed for seasonal ice simulation (Launiainen and Cheng, 1998; Vihma et al., 2002; Cheng et al., 2006), and it is also capable of being applied over perennial sea ice (Cheng et al., 2008b). Previous evaluations have shown that HIGHTSI can well simulate the seasonal evolution of Arctic sea ice temperature and thickness (Cheng et al., 2008b, 5 2013). Further studies have extended the use of HIGHTSI in investigating various processes. By combining the modeling with HIGHTSI and remote sensing data, an analysis that can better reveal the sea ice thickness and concentration information has been made (Karvonen et al., 2012). Moreover, HIGHTSI has also been used in lake ice studies (Yang et al., 2012), and its benefits from a detailed treatment of snow and ice thermodynamics have been confirmed when compared with a simple lake model (Semmler et al., 2012).

10 HIGHTSI contains multi-layer (up to 100) snow and ice such that the heat conduction in snow and ice can be represented in greater detail, and the convergence of the nonlinear temperature solver can be better resolved (Dupont et al., 2015). Following the recommendations by Cheng et al. (2008a), all the simulations in study use 10 layers for snow and 20 layers for ice. The melt is calculated for each layer of snow and ice where the temperature would rise above the freezing point. After being reflected by the surface of sea ice and extinguishing in the snow layer, the solar radiation is then allowed to penetrate into the ice layers in 15 HIGHTSI. During the ice melt season, the penetration of solar radiation into the ice layer can warm the sea ice, thus causing ice ablation. The surface of sea ice in HIGHTSI is treated differently when it is covered by snow such that a more realistic seasonal feature of the sea ice surface can be represented in the model. Benefiting from the detailed representation of heat conduction and solar penetration in the sea ice, HIGHTSI is able to predict the change in sea ice thickness caused by thermodynamic processes. ~~Note that dynamic processes play important roles in the change in sea ice thickness. A thermodynamic sea ice model cannot fully represent the ice thickness change if the sea ice dynamic processes there cannot be neglected.~~ ablation and accretion processes. HIGHTSI utilizes the sigma-coordinate for both snow and ice layers. When the snow and ice thickness changes, an interpolation step which can ensure the conservation of heat is performed. More detailed technical information of HIGHTSI can be found in (Launiainen and Cheng, 1998).

25 The sea ice albedo scheme used in HIGHTSI is the same as ~~the “CCSM” scheme used that~~ in the Community ~~ICE Model (CICE) model~~ Climate System Model Version 3 (CCSM3) (Collins et al., 2006). This scheme (hereafter referred to “CCSM”) empirically estimates the albedo based on surface temperature, surface air temperature, snow cover and ice thickness. Note that the “CCSM” scheme used in this study does not including the input of depth of melt pond, thus it only consider the effect of melt pond implicitly through its relationship with surface temperature.

30 Some modifications have been made to the snow processes in the original HIGHTSI model such that it can share some common physical assumptions with the snow over land and ice sheets in the WRF modeling system. The snow sublimation over sea ice is calculated using the same Penman equation used over land and ice sheets. The snow conduction as a function of snow density and the snow compaction effect as a function of temperature and time are also in accord with the empirical methods originally used by the Noah land surface module in WRF.

Compared with the Noah sea ice, HIGHTSI is more complex and shows advantages on several aspects. First, HIGHTSI has more vertical layers for both snow and ice than Noah, which means the vertical profile of temperature within snow and ice can be represented in greater detail in HIGHTSI than in Noah. Moreover, the surface and basal accretion and ablation processes of sea ice are included in HIGHTSI. Unlike Noah in which the sea ice thickness has to be specified, HIGHTSI can predict the change in sea ice thickness itself. A self adapted ice thickness is crucial for the conservation of energy in sea ice. When the ice thickness is kept constant or specified inappropriately, a misrepresentation of energy balance would be happened. Another problem that had been found in Noah is the treatment of sea ice surface. The Noah assumed the surface of sea ice to be always covered by snow, and a lower bound of 0.01 m is set to prevent the snow depth from becoming too thin. As what has been found in Valkonen et al. (2014), this assumption could lead to a problem of energy imbalance in the simulation of sea ice by Noah. HIGHTSI, on the other hand, includes different treatments for snow and bare-ice surface. When the snow is thin or melted, the solar radiance penetrated into the ice could further heat and melt the ice. Unlike Noah which only considers the solar radiation absorbed by the snow layer, HIGHTSI takes into consideration of the penetration of solar radiation in both snow and ice layers.

A summary of the major differences between Noah and HIGHTSI can be found at Table. 1.

We added the HIGHTSI sea ice model as an option in the WRF modeling system such that it could be easily switched to use the Noah sea ice (hereafter WRF-Noah) or the HIGHTSI (hereafter WRF-HIGHTSI) sea ice through specifying a flag in the namelist file. Both Noah and HIGHTSI utilize the same time step with the WRF model, and they are coupled with WRF at every step. When using the HIGHTSI option, the WRF model would provide precipitation, surface downward longwave and shortwave radiation, and air temperature, wind speed, and height of the lowest model level to drive the HIGHTSI model. HIGHTSI provides the updated surface temperature, albedo, emissivity, upward water vapor flux, and sensible and latent heat flux to WRF, which would then influence the atmospheric processes in the boundary layer.

2.3 Model setup

~~Two online simulations are performed: one using the original Polar WRF model and one using the Polar WRF model coupled with HIGHTSI. A domain in the western Arctic is used in this study (Fig. 2). This is the same as that used in the Arctic Regional Climate Model Intercomparison Project (Curry and Lynch, 2002, ARCMIP). Because the Surface Heat Budget of the Arctic Ocean (SHEBA) campaign was performed inside this domain, comprehensive in situ observations of high quality can be used to validate the simulation results. In this study, the horizontal resolution is set at 25 , which was also used by Bromwich et al. (2009) in the same domain. Both perennial and first-year ice exist in this region, enabling us to evaluate the model's performance over different types of sea ice.~~

~~Because climate simulation is studied here, the model was freely integrated from 1 October 1997 to 1 November 1998 without any reinitialization during the simulation. This caused our results to differ from those in Bromwich et al. (2009), which reinitialized the model every 24 from the ERA40 reanalysis. The initial and lateral boundary conditions are provided by ERA-Interim reanalysis, and the sea surface temperature (SST) and sea ice concentration are provided by the National Oceanic and Atmospheric Administration (NOAA) Optimal Interpolation SST analysis (OISST) version 2 and the National~~

Aeronautics and Space Administration (NASA) bootstrap, respectively (Reynolds et al., 2002; Comiso and Nishio, 2008). The resolution of OISST is 0.25, and that of NASA bootstrap is 25, which is close to the resolution of our simulation. The initial condition of snow depth on sea ice is provided by the Pan Arctic Ice Ocean Modelling and Assimilation system (Zhang and Rothrock, 2003, PIOMAS), a reanalysis product with a resolution of approximately 25. Although HIGHTSI has the ability to simulate the change in sea ice thickness due to thermodynamic processes, the lack of a description of sea ice dynamics still made it difficult to well represent the thickness change over a large period. Consequently, the sea ice thickness in both PWRP and PWRP-HIGHTSI is updated by PIOMAS daily products. The sea ice thickness from PIOMAS exhibits a similar pattern with observations (Laxon et al., 2013), and it has already been used as a boundary condition for simulations using the WRF model (Hines et al., 2015).

The simulation uses 38 eta vertical levels, among which at least 10 levels are within the planetary boundary layer. The top of the model is set at 10 because a higher model top can reduce the bias in simulating the polar atmospheric circulation (Cassano et al., 2011). The time step for the simulation is 120. Spectral nudging at a wavelength of 1500 is used because previous modeling studies have confirmed its benefit to the simulation over polar regions (Cassano et al., 2011).

The results in this study were based on version 3.6.1 of the Polar-modified WRF model, which was the latest release at the time of this study. For the choice of parameterization schemes, we used the same set as most of those used in the Arctic System Reanalysis (ASR) (Bromwich et al., 2015). Kain-Fritsch cumulus (Kain, 2004), Mellor-Yamada-Nakanishi-Niino (MYNN) 2.5-level planetary boundary layer (PBL) (Nakanish, 2001), Morrison two-moments microphysics (Morrison et al., 2009), and Noah land surface are used for the parameterization schemes in our simulation (Chen and Dudhia, 2001). For longwave and shortwave radiation, we use climate model ready updates to the Rapid Radiative Transfer Model known as RRTMG (Iacono et al., 2008).

2.3 Data

The SHEBA experiment during 1997–1998 made comprehensive observations of the atmosphere, ocean and sea ice available (Uttal et al., 2002). The surface temperature, ice mass balance and ice temperature profiles are used to validate the sea ice simulation in this study. The atmospheric observations and the surface radiation observations are not only used in the model evaluations but also used as forcing data to drive the stand-alone versions of Noah sea ice and HIGHTSI. To validate the simulation over the entire model domain, satellite observations are also used. They are the skin surface temperature data from the Extended Advanced Very High Resolution Radiometer (AVHRR) Polar Pathfinder (APP-x) Product (Key et al., 1997) and the surface shortwave and longwave radiation data from the European Organisation for the Exploitation of Meteorological Satellites (EUMETSAT) Climate Monitoring Satellite Application Facility (CM SAF) cLoud, Albedo and RAdiation dataset from AVHRR data (CLARA-A1) (Karlsson et al., 2013). Both APP-x and CLARA-A1 have similar spatial resolutions (25 km and 0.25°, respectively) as that used in our climate simulations. Validations with in situ observations have shown that both APP-x and CLARA-A1 have acceptable accuracies, and these products have already been used in model evaluations and climate change studies over the Arctic (Wang and Key, 2003; Svensson and Karlsson, 2011; Karlsson and Svensson, 2013; Koenigk et al., 2014; Riihelä et al., 2013).

3 Offline simulation of sea ice

The performance of HIGHTSI in simulating sea ice has been evaluated in previous studies, but a direct comparison between HIGHTSI and the sea ice module of Noah in WRF was not yet available (Cheng et al., 2008a). To determine the difference between HIGHTSI and Noah in simulating sea ice when given the observed atmospheric and oceanic forcing, the results from stand-alone versions of Noah sea ice and HIGHTSI are evaluated before they are coupled into the WRF modeling system. Following the settings of the Sea Ice Model Intercomparison Project Part 2 (SIMIP2) control experiment, ~~atmospheric and radiation observations~~ surface pressure, 10 m air temperature, humidity and wind speed, precipitation, downward longwave and shortwave radiation, and ocean heat flux from SHEBA are used to drive the two offline sea ice models. The thickness and temperature of sea ice and the snow on sea ice are initiated with the results from the Pittsburgh site during the SHEBA field campaign (Perovich and Elder, 2001). More details on the process and quality control of SHEBA data can be found in Huwald et al. (2005). The simulations start on 31 October 1997 and end on 22 September 1998 according to the temporal coverage of SHEBA data at the Pittsburgh site. The sea ice thickness is updated at every simulation step by the SHEBA observation for the Noah sea ice module because it is not able to predict the change in sea ice thickness. Benefiting from the more detailed description of thermodynamic processes of the sea ice in HIGHTSI, the sea ice thickness is predicted by the model itself for the HIGHTSI offline run. As mentioned above, snow is assumed to always exist over the sea ice in Noah, and thus, a lower bound for snow depth needs to be specified. In this study, the minimum snow depth in Noah is set to 0.01 m, which is also the default value in the WRF modeling system.

The evolution of snow and sea ice temperature observed at Pittsburgh and simulated by Noah and HIGHTSI can be inferred from Fig. 1. Both Noah and HIGHTSI can well simulate the annual cycle of the sea ice temperature. A cold bias is observed in the simulation by Noah ~~though most of the year, and the bias~~ when the sea ice grows thicker and a warm bias is observed when the sea ice becomes thinner. The bias in Noah increases from the beginning of the simulation and becomes the largest in winter. It is colder than the SHEABA observation ~~by more than 8~~ and the bias can reach to -10°C in the upper part of the sea ice in December and January. The snow depth ~~simulated in Noah is considerably higher than the observation, which can lead to cold bias in the snow layer and upper part of sea ice.~~ is well simulated by HIGHTSI while it is overestimated by Noah. This is because Noah fixes the snow density at a value (300 kg m^{-3}) smaller than that (320 kg m^{-3}) recommended by SIMIP2. The ablation processes like blowing snow is also neglected in Noah. We performed a sensitivity experiment in which the snow depth in Noah is specified based on the SHEBA observation. The ~~cold~~ bias still exists in this simulation, implying that the overestimation of snow depth ~~is not the only reason for the underestimation~~ does not play a role in the bias of sea ice temperature. Another experiment based on Noah is performed to determine to what extent the turbulent flux and albedo may contribute to the bias. In this simulation, the Noah sea ice model does not calculate turbulent fluxes and the surface temperature is specified based on the SHEBA observation. However, the bias in sea ice temperature is underestimated still exists, and the bias in the upper part of the sea ice is over 6°C during winter. ~~Therefore, the bias in the~~ Such a bias exists when the temperature of both the upper and lower boundary of the sea ice is fixed at observational value, which means that the error is associated with energy imbalance within the sea ice ~~simulation by Noah could result from the calculation of heat conduction inside the~~

~~snow and ice~~. The sea ice temperature simulated by HIGHTSI, on the other hand, is warmer than the SHEABA observation during early spring. During other times of the year, the bias in the temperature simulation is rather small in HIGHTSI.

In general, the performance in simulating the sea ice temperature is better for HIGHTSI than for Noah, which can be inferred from the difference between the absolute biases of each model. As mentioned in Sect. 2, HIGHTSI has higher resolution and more sophisticated snow processes than Noah. Thus, the treatment of vertical heat conduction would be more complex in HIGHTSI than in Noah, which ~~may lead to the~~ can lead to a better representation of the vertical profile of sea ice temperature in HIGHTSI. Additionally, the temporal evolution of sea ice thickness for HIGHTSI is calculated such that it is more consistent with the evolution of sea ice temperature. ~~Because the purpose of this study is not to discuss the thermodynamic sea ice model in detail, a comprehensive evaluation of this offline simulation is not shown here. More of the evaluation on the HIGHTSI in simulating sea ice during SHEABA campaign can be seen in Cheng et al. (2008a).~~ Including the ice ablation and accretion processes is essential for the energy balance in sea ice. Both HIGHTSI and Noah apply the sigma-coordinate for the grid system. In HIGHTSI, the grid system is treated by an energy conservative method (Launiainen and Cheng, 1998). At each integration step, the thickness of the uppermost and the bottom layer of ice changes when ablation or accretion happens. Then an integral interpolation method which can ensure the conservation of heat is utilized to remap the ice temperature to the standard sigma levels. In Noah, however, imbalance of energy in sea ice happens when it is specified with a time-dependent ice thickness. Without a remapping step like that in HIGHTSI, the temperature at each sigma level in Noah would not change although the sigma level is actually representing a different depth after the change in ice thickness. Such a problem of energy imbalance imposes a pseudo cooling effect when the ice grows thicker in winter and a pseudo warming effect when the ice becomes thinner in summer.

20 4 Validation of the online simulation

Two online simulations are performed: one using the original Polar WRF model (hereafter WRF-Noah) and one using the Polar WRF model coupled with HIGHTSI (hereafter WRF-HIGHTSI). A domain in the western Arctic is used in this study (Fig. 2). This is the same as that used in the Arctic Regional Climate Model Intercomparison Project (Curry and Lynch, 2002, ARCMIP). Because the Surface Heat Budget of the Arctic Ocean (SHEBA) campaign was performed inside this domain, comprehensive in situ observations of high quality can be used to validate the simulation results. In this study, the horizontal resolution is set at 25 km, which was also used by Bromwich et al. (2009) in the same domain. Both perennial and first-year ice exist in this region, enabling us to evaluate the model's performance over different types of sea ice.

Because climate simulation is studied here, the model was freely integrated from 1 October 1997 to 1 November 1998 without any reinitialization during the simulation. This caused our results to differ from those in Bromwich et al. (2009), which reinitialized the model every 24 h from the ERA40 reanalysis. The initial and lateral boundary conditions are provided by ERA-Interim reanalysis, and the sea surface temperature (SST) and sea ice concentration are provided by the National Oceanic and Atmospheric Administration (NOAA) Optimal Interpolation SST analysis (OISST) version 2 and the National Aeronautics and Space Administration (NASA) bootstrap, respectively (Reynolds et al., 2002; Comiso and Nishio, 2008). The

resolution of OISST is 0.25° , and that of NASA bootstrap is 25 km, which is close to the resolution of our simulation. The initial condition of snow depth on sea ice is provided by the Pan-Arctic-Ice-Ocean Modelling and Assimilation system (Zhang and Rothrock, 2003, PIOMAS), a reanalysis product with a resolution of approximately 25 km. PIOMAS also provides the field of ocean heat flux which is essential for the calculation of basal accretion and ablation.

5 In this study, the sea ice thickness in both WRF-Noah and WRF-HIGHTSI is updated everyday by the PIOMAS products. The sea ice thickness from PIOMAS exhibits a similar pattern with observations (Laxon et al., 2013), and it has already been used as a boundary condition for simulations using the WRF model (Hines et al., 2015). It should be noted that although the ice thickness in WRF-HIGHTSI is specified with reanalysis data, the sea ice component still includes the ice ablation and accretion processes. The integral interpolation method which is energy conservative is utilized at each integration step. Since
10 the ice thickness at each grid may change due the drift of sea ice, only including the thermodynamic effect is not enough for a realistic simulation of ice thickness. The simulation of sea ice thickness change may be biased when the lateral flux of ice mass is neglected. To reduce this bias, the PIOMAS data are applied to correct the ice thickness after HIGHTSI has calculated the ablation and accretion of sea ice. In this way, the energy is not conservative for sea ice simulation in WRF-HIGHTSI. But this problem of energy imbalance would be smaller than that in WRF-Noah since WRF-HIGHTSI has taken into consideration
15 of the thickness change that related with thermodynamic processes.

The simulation uses 38 eta vertical levels, among which at least 10 levels are within the planetary boundary layer. The top of the model is set at 10 hPa because a higher model top can reduce the bias in simulating the polar atmospheric circulation (Cassano et al., 2011). The time step for the simulation is 120 s. Spectral nudging at a wavelength of 1500 km is used because previous modeling studies have confirmed its benefit to the simulation over polar regions (Cassano et al., 2011).

20 The results in this study were based on version 3.6.1 of the Polar-modified WRF model, which was the latest release at the time of this study. For the choice of parameterization schemes, we used the same set as most of those used in the Arctic System Reanalysis (ASR) (Bromwich et al., 2015). Kain-Fritsch cumulus (Kain, 2004), Mellor-Yamada-Nakanishi-Niino (MYNN) 2.5-level planetary boundary layer (PBL) (Nakanish, 2001), Morrison two-moments microphysics (Morrison et al., 2009), and Noah land surface are used for the parameterization schemes in our simulation (Chen and Dudhia, 2001). For longwave
25 and shortwave radiation, we use climate model-ready updates to the Rapid Radiative Transfer Model known as RRTMG (Iacono et al., 2008).

The 6-hourly outputs from the simulation are bilinearly interpolated to the point where the SHEBA station was located at each time. Then, the monthly averages of the SHEBA observations and model results are compared. Considering the sea ice temperature (Fig. 3), cold biases remain in both WRF-Noah and WRF-HIGHTSI in the upper part of the sea ice during winter.
30 Such a cold bias in WRF-Noah can reach to -10°C . In summer, both WRF-Noah and WRF-HIGHTSI show smaller biases. In accordance with the results from offline simulations, WRF-Noah tends to underestimate the sea ice temperature when the ice grows thicker, and the overestimate the sea ice temperature when the ice becomes thinner. As what has been found in the offline simulation, this bias is mainly caused by a problem of energy imbalance in ice. The bias becomes smaller near the bottom part of the sea ice, since the temperature at the lower bound of sea ice is fixed at freezing point of seawater. Benefited from including the ablation and accretion processes, WRF-HIGHTSI can better resolve the energy balance in sea ice. The bias
35

of sea ice temperature simulated by WRF-HIGHTSI is considerably smaller than WRF-Noah during December to March when the ice grows thicker.

For the simulation over sea ice surface (Fig. 4), WRF-Noah underestimates the surface temperature during winter compared with the SHEBA observation. The bias is approximately 5 to 6°C from November to March, and it becomes smaller in summer when the sea ice temperature is close to its freezing point. WRF-HIGHTSI also underestimates the surface temperature in winter, but the bias is considerably smaller than that of WRF-Noah by about 6°C. The underestimation of surface temperature in both WRF-Noah and WRF-HIGHTSI is caused by an associated with the underestimation in downward longwave radiation. This is related to the misrepresentation of cloud microphysics, as revealed in previous evaluations (Wyser et al., 2007; Pithan et al., 2013). ~~This bias in the cloud radiation effect in WRF-HIGHTSI is partly compensated by its tendency for a warmer sea ice temperature. Considering the sea ice temperature (Fig. 4), cold biases remain in both WRF-Noah and WRF-HIGHTSI in the upper part of the sea ice during winter. The bias is larger in WRF-Noah than in WRF-HIGHTSI.~~ ERA-Interim overestimates the sea ice surface temperature compared with the SHEBA observations. A recent study also found that the ERA-Interim simulates a warmer surface temperature over Antarctic ice sheet due to an overestimation of the surface turbulent fluxes under very stable conditions (Fréville et al., 2014; Jones and Lister, 2014). ~~The surface~~ Because both WRF-Noah and WRF-HIGHTSI apply the same physics schemes for radiation, microphysics, cumulation and boundary layer and use the spectral nudging technique to constrain the atmospheric circulation, the differences in simulating the downward radiation and turbulent flux by WRF-Noah and WRF-HIGHTSI are small. The improvement in simulating the surface temperature by WRF-HIGHTSI is mainly attributed to the a better simulation below the surface. During December to March, the sea ice temperature is significantly underestimated by WRF-Noah due to the problem of energy imbalance in sea ice. This cold bias in sea ice temperature exert a cooling effect on the surface temperature simulated by WRF-Noah. In WRF-HIGHTSI, the simulation of surface temperature is greatly improved due to a reduced bias in sea ice temperature.

The surface air temperatures (at heights of 2.5 m for SHEBA observation and 2 m for ERA-Interim and WRF) simulated in WRF and ERA-Interim are also evaluated. Benefiting from the data assimilation, the results from ERA-Interim are the closest with respect to the SHEBA observation. Both WRF-Noah and WRF-HIGHTSI underestimate the surface air temperature, whereas WRF-HIGHTSI has smaller bias than WRF-Noah –

by about 5°C in winter. Similar to the simulation of surface temperature, WRF-Noah underestimates the surface upward longwave radiation during winter. WRF-HIGHTSI, on the other hand, has better performance in simulating the upward longwave radiation than WRF-Noah due to the better representation of the surface temperature. WRF-HIGHTSI reduces the bias by about 20 W/m² in winter. Due to the smaller vertical gradient of sea ice temperature in summer, the bias becomes smaller for both the surface temperature and the upward longwave radiation. Moreover, the difference between WRF-HIGHTSI and WRF-Noah also becomes smaller in summer. Both WRF-Noah and WRF-HIGHTSI ~~underestimate the surface upward shortwave radiation during late spring and early summer. This bias is caused by the underestimation of downward shortwave radiation. Both WRF-Noah and WRF-HIGHTSI overestimate the sea ice albedo due to the simulation of a too early-late snow melting over sea ice and the lack of melt-pond effect in summer. While the empirical estimate of WRF-HIGHTSI has a larger overestimation of albedo than WRF-Noah. As mentioned above, both Noah and HIGHTSI parameterize the sea ice albedo~~

empirically. The effect of melt pond on albedo is realized through a relationship between sea ice albedo ~~in WRF-Noah is better tuned for the summer sea ice in the Arctic (Bromwich et al., 2009), the higher~~ and surface temperature which is sensitive to tunable parameters. The sea ice albedo simulated by Noah is based on empirical relationship derived from the SHEBA observations (Bromwich et al., 2009), and this estimation has been shown to give a result close to the SHEBA observation (Porter et al., 2011). Both WRF-Noah and WRF-HIGHTSI underestimate the surface upward shortwave radiation ~~in~~ due to the underestimation of downward shortwave radiation. Such a bias in upward shortwave radiation simulated by WRF-HIGHTSI results from the overestimation of is partly compensated by its overestimation of the sea ice albedo.

In addition to the verification at the SHEBA site, the evaluation is also conducted over the entire domain covered by sea ice. Figure 5 shows the surface temperature, 2 m air temperature and surface upward longwave radiation from observations and their biases from WRF-Noah and WRF-HIGHTSI on January 1998. With reference to the satellite observation, the cold bias in simulating the surface temperature found at the SHEBA site can be observed anywhere that is covered by sea ice. The pattern of the bias in simulating the surface temperature was consistent with those in simulating the 2 m air temperature and surface upward longwave radiation. The biases were considerably smaller in WRF-HIGHTSI than in WRF-Noah over all the grid points covered by sea ice. A summary of the performance of WRF-HIGHTSI, WRF-Noah and ERA-Interim in simulating the surface temperature and radiation budget is given in terms of the metric as root-mean-squared error (RMSE) with respect to observations (Fig. 6). In general, the RMSE was larger in winter than in summer, and WRF-HIGHTSI had a significantly smaller RMSE than WRF-Noah in winter.

5 Impact of the sea ice thickness specification

Previous studies have shown that sea ice thickness exerts an indiscernible influence on the atmosphere over sea ice (Gerdes, 2006; Krinner et al., 2008). It has been acknowledged that prescribing the sea ice fraction alone might lead to bias in the simulation of surface energy balance, particularly over the seasonal sea ice. To fulfill this demand, the ability to prescribe the observed sea ice thickness and the sea ice fraction is added to the recent versions of the WRF and Polar WRF models. Due to the difficulties in observing and retrieving the sea ice thickness, routinely reliable observations were not available at the time of this study. Some reanalysis products (such as PIOMAS used in this study) have provided useful information on the sea ice thickness with high spatial and temporal resolutions. However, note that the limited observations in the assimilation system can impact the quality of the sea ice reanalyses. Additionally, the surface energy imbalance could result from the inconsistency between the different sea ice in the reanalysis and that in the regional climate model. Currently, there are three ways to prescribe the sea ice thickness in the regional atmospheric model: treating sea ice as a constant value everywhere, using the spatially and temporally variant values from observations or reanalyses, or applying a simple parameterization based on the knowledge of the statistical relationship between sea ice thickness and sea ice fraction. The simple parameterization of sea ice thickness is represented in the form as the following equation, as first proposed by Krinner et al. (1997).

$$d = (0.2 + 3.8(f_{\min}^2)) (1 + 2(f - f_{\min})) \quad (1)$$

The sea ice thickness estimated from this empirical method has proven to ~~be close to show a similar pattern with~~ the observational value in both Arctic and Antarctic sea ice in terms of the climatological mean. ~~But the seasonal variation of ice thickness cannot be realistically represented by the estimation based only on sea ice fraction.~~

Here, we present a new method for estimating the sea ice thickness, which incorporates both the empirical statistics as that in the simple parameterization and the potential ability of a complex thermodynamic sea ice model to predict the change in sea ice thickness. During the climate simulation of the regional climate model (WRF-HIGHTSI in this study), the sea ice thickness estimated from Eq. (1) is used as the initial value. Along with the integration of the RCM, the change in sea ice thickness is determined by the HIGHTSI component. For the grid point where no sea ice is present in the previous time step, the sea ice thickness is also prescribed from Eq. (1) as a first guess. In this way, the evolution of sea ice thickness is somewhat more reasonable than the value obtained only from the empirical method because the thermodynamic air-ice interaction could be resolved in RCM, ~~and a seasonal variation of ice thickness can be introduced by including the ablation and accretion processes.~~

~~In addition to the two simulations evaluated in the previous section,~~ To test the impact of sea ice specification, three more simulations are performed to compare the simulations with different treatments of sea ice thickness. ~~We use~~ One simulation uses the same model as WRF-Noah in the previous section, but ~~we fix~~ fixes the sea ice thickness as 3 m (hereafter referred to as Noah_3m), ~~which~~. This is the default ~~value in the WRF model setup in current WRF model and it represents the the common practices in most previous modelling studies~~ when no additional information on sea ice thickness is given. ~~The~~ Then, other two simulations ~~use~~ are performed using the WRF-HIGHTSI as was evaluated in the previous section. Among the two simulations, one is prescribed with the sea ice thickness estimated from the simple parameterization as given from Eq. (1) (hereafter referred to as PARAM), and the other one is prescribed with the sea ice thickness as proposed in terms of combining the empirical method and the prediction from HIGHTSI component (hereafter referred to as THERM). ~~A brief summary of the setup of the simulations can be seen in Table 2. As mentioned for the online simulation, the ice ablation and accretion processes are included in all the three simulations by WRF-HIGHTSI. Ocean heat flux from PIOMAS is used as the ocean boundary condition, due to its influence on the basal accretion and ablation processes of sea ice. In PARAM, the ice thickness parameterized from Eq. (1) will be used as the initial guess, and replace the value predicted by HIGHTSI itself. In THERM, however, the parameterization as Eq. (1) only influence the initial guess and the ice thickness is allowed to be evolved freely based on the calculation by HIGHTSI.~~

The sea ice thickness from the PIOMAS, the empirical estimation in PARAM and the results from THERM are presented in Fig. 7. Based on the results from PARAM, the perennial sea ice was approximately 3 m thick and the seasonal sea ice was less than 1 m thick. This empirical estimation could, to some extent, mimic the general climatology characteristics of the thickness distribution, whereas it could not provide detailed information spatially and temporally. ~~The PARAM overestimates the perennial sea ice thickness throughout the year while underestimates the seasonal sea ice thickness in winter and spring. Within the simulation domain in this study, the perennial sea ice thickness as shown in PIOMAS is around 2 m in November and is about 2.5 m thick in May. The 3 m ice thickness for perennial sea ice as estimated from Eq. (1) is thicker than the PIOMAS result. For the seasonal sea ice, a thickening trend during winter time could be found based on PIOMAS result. The estimation from Eq. (1) could not introduce such a thickening trend since the sea ice fraction is already near 1 at each~~

grid point. This is the limitation of the empirical estimation for ice thickness. Based on the results from THERM, the sea ice thickness was similar with that from the PARAM when the model free run had just begun. Thus, it shared the same bias with that of PARAM. When the in PARAM. Benefiting from the consideration of accretion process of sea ice, the thickening trend of sea ice thickness during winter time could be introduced in THERM. This thickening trend would enlarge the positive bias of perennial sea ice thickness as the initial guess has already overestimate the ice thickness. The perennial sea ice thickness as simulated by THERM was over 4 m in May, which was much thicker than the estimation from PIOMAS. Despite of the systematic overestimation, the tendency of thickness change for perennial sea ice as simulated by THERM was close to that from PIOMAS. Thus a better simulation of perennial sea ice thickness might be possible given a more realistic initial guess. The thickening tendency that introduced onto the seasonal sea ice increased in thickness as predicted by the thermodynamic sea ice model, the bias became larger (smaller) over the perennial (seasonal) sea ice. Moreover, detailed enabled THERM to simulate a thicker seasonal sea ice than PARAM during winter time. For seasonal sea ice, the first guess given by empirical estimation is close to the observation during the beginning of the simulation. When the sea ice grows thicker, THERM would introduce the thickening trend which was lacked in PARAM. THERM simulates a thicker seasonal sea ice over Chukchi Sea and Beaufort Sea during winter time than PARAM, which is closer to the observation. Detailed spatial features of change in sea ice thickness could not be fully resolved in THERM because it could not account for the dynamic sea ice processes. For example, both the thermodynamic and dynamic processes over the Bering Sea would play an important role and could show opposite signs and nearly cancel each other (Li et al., 2014). Lacking the influence of ice motion, THERM simulated a continuous thickening trend of sea ice over Bering Sea during winter. This leads to a positive bias of about 1 m for the ice thickness in May. Consequently, the THERM method could represent the seasonal evolution of sea ice thickness, but it would also depend on the initial guess that was estimated from the empirical parameterization. In our simulation, the THERM method showed better results than PARAM over seasonal sea ice, while it led to larger bias over perennial sea ice.

The summary of the surface energy simulation over sea ice by prescribing different thermodynamic sea ice models and different treatments of sea ice thickness is given in Fig. 8. The RMSE was calculated from monthly mean values of surface temperature, surface upward longwave radiation, and 2 m air temperature simulated by the WRF model given different sea ice treatments through the simulation period from November 1997 to October 1998. Generally, the simulations using WRF-HIGHTSI showed smaller RMSEs than those using WRF-Noah, confirming the improvements due to the coupling of HIGHTSI. Comparing the results from Noah and Noah_3m, prescribing observational information on the sea ice thickness led to a better simulation in the original polar-modified WRF. This result was consistent with Hines et al. (2015). Comparing the results from HIGHTSI, PARAM and THERM, it was found that the THERM method HIGHTSI led to the largest error. Thus, we can conclude that it would be difficult for the thermodynamic sea ice model to well represent the sea ice thickness when there is a lack of consideration of dynamic processes and information on the initial guess best performance as a result of prescribing the ice thickness from PIOMAS. The RMSEs in THERM were larger than those in PARAM. This could be a result of simulating a too thick perennial sea ice in THERM, since perennial sea ice has the largest spatial coverage during most time of the simulation.

6 Conclusions

As a major feature in the polar climate system, sea ice plays an important role in the air–ice–ocean interaction and needs to be properly represented in polar RCMs. The ~~Noah sea ice WRF~~ model, which has been widely used in ~~the WRF model~~, is ~~compared with~~ polar research, applies the Noah scheme as its only option for sea ice simulation. Previous researches have

5 ~~shown that the simplification in the Noah sea ice model can lead to problems of energy imbalance when used for polar climate simulation (Valkonen et al., 2014). HIGHTSI, a complex thermodynamic sea ice model, HIGHTSI, in simulating the Arctic sea ice~~ shows advantages over Noah on several aspects. HIGHTSI has higher resolution for both snow and ice than Noah, and it takes into account the penetration of solar energy in ice layers. Moreover, HIGHTSI includes the ice ablation and accretion processes and uses an interpolation method which can ensure heat conservation during each integration step. These features

10 ~~enable HIGHTSI to better resolve the energy balance in the sea ice than Noah.~~ Forced with atmospheric conditions observed during the SHEBA experiment, Noah sea ice exhibits cold bias ~~which can reach to -10 °C~~ during winter when simulating the sea ice temperature. ~~Sensitivity experiments attributed this bias to not only the cloud radiation effect and stable boundary layer but also to heat conduction through snow and~~ This bias still exist when the snow depth and surface temperature in Noah are specified with observations, indicating the bias in Noah is associated with energy imbalance within sea ice. When prescribed

15 ~~with a time-dependent ice thickness, lacking the interpolation step which can ensure the conservation of heat would lead to a cold bias when the ice grows thicker and a warm bias when the ice becomes thinner. HIGHTSI, which overcomes this shortage by resolving the energy balance in ice. HIGHTSI, which can better resolve the heat transport and solar penetration in snow and sea ice,~~ provides a better simulation than Noah. ~~The cold bias of sea ice temperature in Noah is significantly reduced in HIGHTSI.~~ To determine the possible added value from a complex thermodynamic sea ice model, HIGHTSI is coupled into the

20 polar-modified WRF model. ~~The evaluation of the model's simulation over sea ice surface is conducted using the SHEBA in situ observations and satellite radiation observations. The cold~~ Benefiting from the better representation of energy balance in ice as shown in the offline simulation, the WRF model coupled with HIGHTSI (WRF-HIGHTSI) significantly reduced the bias in simulating the ~~surface temperature over sea ice in winter by~~ sea ice temperature than the original Polar WRF which uses Noah (WRF-Noah ~~is reduced in the simulation of WRF-HIGHTSI, which also~~). This leads to a better representation of the surface

25 ~~temperature, surface~~ upward longwave radiation and 2 m air temperature in the WRF-HIGHTSI ~~compared with WRF-Noah.~~ Considering the bias with reference to SHEBA observations, WRF-HIGHTSI improves the simulation of surface temperature, 2 m air temperature and surface upward longwave radiation flux in winter by 6 °C, 5 °C, and 20 W/m², respectively.

The appropriate specification of sea ice thickness is important for climate simulations in the polar region. Regional climate simulations with sea ice thickness prescribed by different methods are conducted to study the impact from different treatments

30 of sea ice thickness. Consistent with previous studies (Hines et al., 2015), prescribing the sea ice thickness with observational information results in the best simulation among all the other methods. If no observational information is available, using an empirical method based on the relationship between sea ice concentration and sea ice thickness could, to some extent, mimic the large-scale feature of the thickness distribution. ~~However, this empirical estimation can not account for spatial details and the seasonal variation of ice thickness.~~ In this study, we test another method ~~in which the~~ to see how the sea ice thickness

would be simulated given a complex thermodynamic sea ice model which includes the ablation and accretion processes. This method initializes the sea ice thickness ~~is initialized~~ from the empirical estimation ~~and its change~~ while the further change in ice thickness is predicted by the thermodynamic sea ice model itself. Based on this method, the ~~large-scale feature tendency~~ of seasonal change in sea ice thickness can be ~~better represented compared to the purely empirical estimation~~ introduced.

5 However, ~~its potential usage is still limited by the lack of dynamic sea ice processes and the coarse assumption on the initial sea ice thickness~~—the ice thickness simulated through this method depends much on the quality of the initial guess of ice thickness and the role of the ice dynamic processes. As a result, specifying ice thickness from other sources like PIOMAS would still be the best practice for climate simulation based on current atmospheric-only RCMs.

~~The simulation over sea ice surface is improved through coupling a complex thermodynamic sea ice model. Large bias in the surface radiation budget still exists due to the misrepresentation of the cloud radiative effect. Thus, a better understanding of the cloud regime and developing a more sophisticated microphysics parameterization would greatly improve the model's simulation (Wesslén et al., 2014). In~~ Based on the simulations in this study, ~~only a~~—it can be concluded that the regional simulation of polar climate can be benefited from coupling with a complex thermodynamic sea ice model ~~is coupled to the WRF because an interactive ocean model is not included here to drive the dynamic sea ice processes. The~~ which can better

10 ~~resolve the energy balance in sea ice. But~~ lack of sea ice dynamic processes means that the horizontal transport of mass and energy in sea ice is ignored in the regional atmospheric model, ~~and thus, the model is still not sophisticated enough to well represent the~~. To account for this problem, sea ice thickness from PIOMAS reanalysis is used in this study. This means the simulation of sea ice will rely on the driving field of ice thickness, and the air–ice–ocean interaction in the polar climate system ~~could not be fully represented~~. Therefore, although the development of coupled RCM is still a challenging task, it is an essential

15 ~~pathway toward a realistic simulation of the polar climate (Berg et al., 2015).~~

Code availability

The source code of WRF-HIGHTSI can be obtained at <ftp://101.6.240.73/pub/WRF-HIGHTSI/WRF-HIGHTSI.tar.gz>.

Acknowledgements. This study is supported by the National Basic Research Program of China (2013CBA01805).

References

- Andreas, E. L., Persson, P. O. G., Grachev, A. A., Jordan, R. E., Horst, T. W., Guest, P. S., and Fairall, C. W.: Parameterizing Turbulent Exchange over Sea Ice in Winter, *J. Hydrometeorol.*, 11, 87–104, doi:10.1175/2009jhm1102.1, <http://dx.doi.org/10.1175/2009JHM1102.1>, 2010.
- 5 Barton, N. P., Klein, S. A., and Boyle, J. S.: On the Contribution of Longwave Radiation to Global Climate Model Biases in Arctic Lower Tropospheric Stability, *Journal of Climate*, 27, 7250–7269, doi:10.1175/jcli-d-14-00126.1, <http://dx.doi.org/10.1175/JCLI-D-14-00126.1>, 2014.
- Berg, P., Döscher, R., and Koenigk, T.: On the effects of constraining atmospheric circulation in a coupled atmosphere-ocean Arctic regional climate model, *Clim Dyn.*, in press, doi:10.1007/s00382-015-2783-y, <http://dx.doi.org/10.1007/s00382-015-2783-y>, 2015.
- 10 Bitz, C. M. and Lipscomb, W. H.: An energy-conserving thermodynamic model of sea ice, *J. Geophys. Res.*, 104, 15 669, doi:10.1029/1999jc900100, <http://dx.doi.org/10.1029/1999JC900100>, 1999.
- Bourassa, M. A., Gille, S. T., Bitz, C., Carlson, D., Cerovecki, I., Clayson, C. A., Cronin, M. F., Drennan, W. M., Fairall, C. W., Hoffman, R. N., Magnusdottir, G., Pinker, R. T., Renfrew, I. A., Serreze, M., Speer, K., Talley, L. D., and Wick, G. A.: High-Latitude Ocean and Sea Ice Surface Fluxes: Challenges for Climate Research, *Bull. Amer. Meteor. Soc.*, 94, 403–423, doi:10.1175/bams-d-11-00244.1, <http://dx.doi.org/10.1175/BAMS-D-11-00244.1>, 2013.
- 15 Bromwich, D. H., Hines, K. M., and Bai, L.-S.: Development and testing of Polar Weather Research and Forecasting model: 2. Arctic Ocean, *Journal of Geophysical Research: Atmospheres*, 114, D08 122, doi:10.1029/2008JD010300, <http://dx.doi.org/10.1029/2008JD010300>, 2009.
- Bromwich, D. H., Otieno, F. O., Hines, K. M., Manning, K. W., and Shilo, E.: Comprehensive evaluation of polar weather research and forecasting model performance in the Antarctic, *Journal of Geophysical Research: Atmospheres*, 118, 274–292, doi:10.1029/2012jd018139, <http://dx.doi.org/10.1029/2012JD018139>, 2013.
- 20 Bromwich, D. H., Wilson, A. B., Bai, L.-S., Moore, G. W. K., and Bauer, P.: A comparison of the regional Arctic System Reanalysis and the global ERA-Interim Reanalysis for the Arctic, *Quarterly Journal of the Royal Meteorological Society*, p. in press, doi:10.1002/qj.2527, <http://dx.doi.org/10.1002/qj.2527>, 2015.
- 25 Cassano, J. J., Higgins, M. E., and Seefeldt, M. W.: Performance of the Weather Research and Forecasting Model for Month-Long Pan-Arctic Simulations, *Mon. Wea. Rev.*, 139, 3469–3488, doi:10.1175/mwr-d-10-05065.1, <http://dx.doi.org/10.1175/MWR-D-10-05065.1>, 2011.
- Chen, F. and Dudhia, J.: Coupling an Advanced Land Surface–Hydrology Model with the Penn State–NCAR MM5 Modeling System. Part I: Model Implementation and Sensitivity, *Mon. Wea. Rev.*, 129, 569–585, doi:10.1175/1520-0493(2001)129<0569:caalsh>2.0.co;2, [http://dx.doi.org/10.1175/1520-0493\(2001\)129<0569:CAALSH>2.0.CO;2](http://dx.doi.org/10.1175/1520-0493(2001)129<0569:CAALSH>2.0.CO;2), 2001.
- 30 Cheng, B., Vihma, T., Pirazzini, R., and Granskog, M. A.: Modelling of superimposed ice formation during the spring snowmelt period in the Baltic Sea, *Annals of Glaciology*, 44, 139–146, doi:doi:10.3189/172756406781811277, <http://www.ingentaconnect.com/content/igsoc/agl/2006/00000044/00000001/art00024>, 2006.
- Cheng, B., Vihma, T., Zhang, Z.-h., Zhi-jun, L., and Hui-ding, W.: Snow and sea ice thermodynamics in the Arctic: Model validation and sensitivity study against SHEBA data, *Chinese Journal of Polar Science*, 19, 108–122, doi:CNKI:SUN:JDYJ.0.2008-02-003, 2008a.
- 35 Cheng, B., Zhang, Z., Vihma, T., Johansson, M., Bian, L., Li, Z., and Wu, H.: Model experiments on snow and ice thermodynamics in the Arctic Ocean with CHINARE 2003 data, *Journal of Geophysical Research: Oceans (1978–2012)*, 113, C09 020, doi:10.1029/2007JC004654, 2008b.

- Cheng, B., Mäkynen, M., Similä, M., Rontu, L., and Vihma, T.: Modelling snow and ice thickness in the coastal Kara Sea, Russian Arctic, *Annals of Glaciology*, 54, 105–113, doi:10.3189/2013aog62a180, <http://dx.doi.org/10.3189/2013AoG62A180>, 2013.
- Collins, W. D., Bitz, C. M., Blackmon, M. L., Bonan, G. B., Bretherton, C. S., Carton, J. A., Chang, P., Doney, S. C., Hack, J. J., Henderson, T. B., Kiehl, J. T., Large, W. G., McKenna, D. S., Santer, B. D., and Smith, R. D.: The Community Climate System Model Version 3 (CCSM3), *Journal of Climate*, 19, 2122–2143, doi:10.1175/jcli3761.1, <http://dx.doi.org/10.1175/JCLI3761.1>, 2006.
- Comiso, J. C. and Nishio, F.: Trends in the sea ice cover using enhanced and compatible AMSR-E, SSM/I, and SMMR data, *J. Geophys. Res.*, 113, C02S07, doi:10.1029/2007jc004257, <http://dx.doi.org/10.1029/2007JC004257>, 2008.
- Curry, J. A. and Lynch, A. H.: Comparing Arctic Regional Climate Model, *Eos, Transactions American Geophysical Union*, 83, 87–87, doi:10.1029/2002EO000051, <http://dx.doi.org/10.1029/2002EO000051>, 2002.
- 10 Day, J. J., Hawkins, E., and Tietsche, S.: Will Arctic sea ice thickness initialization improve seasonal forecast skill?, *Geophysical Research Letters*, 41, 7566–7575, doi:10.1002/2014GL061694, <http://dx.doi.org/10.1002/2014GL061694>, 2014.
- Dorn, W., Dethloff, K., and Rinke, A.: Improved simulation of feedbacks between atmosphere and sea ice over the Arctic Ocean in a coupled regional climate model, *Ocean Modelling*, 29, 103 – 114, doi:<http://dx.doi.org/10.1016/j.ocemod.2009.03.010>, <http://www.sciencedirect.com/science/article/pii/S1463500309000626>, 2009.
- 15 Dorn, W., Dethloff, K., and Rinke, A.: Limitations of a coupled regional climate model in the reproduction of the observed Arctic sea-ice retreat, *The Cryosphere*, 6, 985–998, doi:10.5194/tc-6-985-2012, <http://dx.doi.org/10.5194/tc-6-985-2012>, 2012.
- Dupont, F., Vancoppenolle, M., Tremblay, L.-B., and Huwald, H.: Comparison of different numerical approaches to the 1D sea-ice thermodynamics problem, *Ocean Modelling*, 87, 20–29, doi:10.1016/j.ocemod.2014.12.006, <http://dx.doi.org/10.1016/j.ocemod.2014.12.006>, 2015.
- 20 English, J. M., Gettelman, A., and Henderson, G. R.: Arctic Radiative Fluxes: Present-Day Biases and Future Projections in CMIP5 Models, *Journal of Climate*, 28, 6019–6038, doi:10.1175/jcli-d-14-00801.1, <http://dx.doi.org/10.1175/JCLI-D-14-00801.1>, 2015.
- Fréville, H., Brun, E., Picard, G., Tatarinova, N., Arnaud, L., Lanconelli, C., Reijmer, C., and van den Broeke, M.: Using MODIS land surface temperatures and the Crocus snow model to understand the warm bias of ERA-Interim reanalyses at the surface in Antarctica, *The Cryosphere*, 8, 1361–1373, doi:10.5194/tc-8-1361-2014, <http://dx.doi.org/10.5194/tc-8-1361-2014>, 2014.
- 25 Gerdes, R.: Atmospheric response to changes in Arctic sea ice thickness, *Geophys. Res. Lett.*, 33, doi:10.1029/2006gl027146, <http://dx.doi.org/10.1029/2006GL027146>, 2006.
- Glisan, J. M. and Gutowski, W. J.: WRF summer extreme daily precipitation over the CORDEX Arctic, *Journal of Geophysical Research: Atmospheres*, 119, 1720–1732, doi:10.1002/2013jd020697, <http://dx.doi.org/10.1002/2013JD020697>, 2014a.
- Glisan, J. M. and Gutowski, W. J.: WRF winter extreme daily precipitation over the North American CORDEX Arctic, *Journal of Geophysical Research: Atmospheres*, 119, 10,738–10,748, doi:10.1002/2014JD021676, <http://dx.doi.org/10.1002/2014JD021676>, 2014JD021676, 2014b.
- 30 Hines, K. M. and Bromwich, D. H.: Development and Testing of Polar Weather Research and Forecasting (WRF) Model. Part I: Greenland Ice Sheet Meteorology, *Mon. Wea. Rev.*, 136, 1971–1989, doi:10.1175/2007mwr2112.1, <http://dx.doi.org/10.1175/2007MWR2112.1>, 2008.
- Hines, K. M., Bromwich, D. H., Bai, L.-S., Barlage, M., and Slater, A. G.: Development and Testing of Polar WRF. Part III: Arctic Land, *Journal of Climate*, 24, 26–48, doi:10.1175/2010jcli3460.1, <http://dx.doi.org/10.1175/2010JCLI3460.1>, 2011.
- 35 Hines, K. M., Bromwich, D. H., Bai, L., Bitz, C. M., Powers, J. G., and Manning, K. W.: Sea Ice Enhancements to Polar WRF, *Monthly Weather Review*, 143, 2363–2385, doi:10.1175/MWR-D-14-00344.1, 2015.

- Huwald, H., Tremblay, L.-B., and Blatter, H.: Reconciling different observational data sets from Surface Heat Budget of the Arctic Ocean (SHEBA) for model validation purposes, *Journal of Geophysical Research: Oceans*, 110, C05 009, doi:10.1029/2003JC002221, <http://dx.doi.org/10.1029/2003JC002221>, c05009, 2005.
- Iacono, M. J., Delamere, J. S., Mlawer, E. J., Shephard, M. W., Clough, S. A., and Collins, W. D.: Radiative forcing by long-lived greenhouse gases: Calculations with the AER radiative transfer models, *J. Geophys. Res.*, 113, D13 103, doi:10.1029/2008jd009944, <http://dx.doi.org/10.1029/2008JD009944>, 2008.
- Jin, Z., Stamnes, K., Weeks, W. F., and Tsay, S.-C.: The effect of sea ice on the solar energy budget in the atmosphere-sea ice-ocean system: A model study, *Journal of Geophysical Research: Oceans*, 99, 25 281–25 294, doi:10.1029/94JC02426, <http://dx.doi.org/10.1029/94JC02426>, 1994.
- 10 Jones, P. D. and Lister, D. H.: Antarctic near-surface air temperatures compared with ERA-Interim values since 1979, *International Journal of Climatology*, 35, 1354–1366, doi:10.1002/joc.4061, <http://dx.doi.org/10.1002/joc.4061>, 2014.
- Kain, J. S.: The Kain–Fritsch Convective Parameterization: An Update, *Journal of Applied Meteorology*, 43, 170–181, doi:10.1175/1520-0450(2004)043<0170:tkcpau>2.0.co;2, [http://dx.doi.org/10.1175/1520-0450\(2004\)043<0170:TKCPAU>2.0.CO;2](http://dx.doi.org/10.1175/1520-0450(2004)043<0170:TKCPAU>2.0.CO;2), 2004.
- 15 Karlsson, J. and Svensson, G.: Consequences of poor representation of Arctic sea-ice albedo and cloud-radiation interactions in the CMIP5 model ensemble, *Geophysical Research Letters*, 40, 4374–4379, doi:10.1002/grl.50768, <http://dx.doi.org/10.1002/grl.50768>, 2013.
- Karlsson, K.-G., Riihelä, A., Müller, R., Meirink, J. F., Sedlar, J., Stengel, M., Lockhoff, M., Trentmann, J., Kaspar, F., Hollmann, R., and Wolters, E.: CLARA-A1: a cloud, albedo, and radiation dataset from 28 yr of global AVHRR data, *Atmospheric Chemistry and Physics*, 13, 5351–5367, doi:10.5194/acp-13-5351-2013, <http://www.atmos-chem-phys.net/13/5351/2013/>, 2013.
- 20 Karvonen, J., Cheng, B., Vihma, T., Arkett, M., and Carrieres, T.: A method for sea ice thickness and concentration analysis based on SAR data and a thermodynamic model, *The Cryosphere*, 6, 1507–1526, doi:10.5194/tc-6-1507-2012, <http://www.the-cryosphere.net/6/1507/2012/>, 2012.
- Key, J. R., Collins, J. B., Fowler, C., and Stone, R. S.: High-latitude surface temperature estimates from thermal satellite data, *Remote Sensing of Environment*, 61, 302 – 309, doi:http://dx.doi.org/10.1016/S0034-4257(97)89497-7, <http://www.sciencedirect.com/science/article/pii/S0034425797894977>, 1997.
- 25 Koenigk, T., Devasthale, A., and Karlsson, K.-G.: Summer Arctic sea ice albedo in CMIP5 models, *Atmospheric Chemistry and Physics*, 14, 1987–1998, doi:10.5194/acp-14-1987-2014, <http://www.atmos-chem-phys.net/14/1987/2014/>, 2014.
- Koenigk, T., Berg, P., and D?scher, R.: Arctic climate change in an ensemble of regional CORDEX simulations, *Polar Research*, 34, 24 603, doi:10.3402/polar.v34.24603, <http://www.polarresearch.net/index.php/polar/article/view/24603>, 2015.
- 30 Krinner, G., Genthon, C., Li, Z.-X., and Le Van, P.: Studies of the Antarctic climate with a stretched-grid general circulation model, *Journal of Geophysical Research: Atmospheres*, 102, 13 731–13 745, doi:10.1029/96JD03356, <http://dx.doi.org/10.1029/96JD03356>, 1997.
- Krinner, G., Rinke, A., Dethloff, K., and Gorodetskaya, I. V.: Impact of prescribed Arctic sea ice thickness in simulations of the present and future climate, *Clim Dyn*, 35, 619–633, doi:10.1007/s00382-009-0587-7, <http://dx.doi.org/10.1007/s00382-009-0587-7>, 2009.
- Launiainen, J. and Cheng, B.: Modelling of ice thermodynamics in natural water bodies, *Cold Regions Science and Technology*, 27, 153–178, 35 1998.
- Laxon, S. W., Giles, K. A., Ridout, A. L., Wingham, D. J., Willatt, R., Cullen, R., Kwok, R., Schweiger, A., Zhang, J., Haas, C., Hendricks, S., Krishfield, R., Kurtz, N., Farrell, S., and Davidson, M.: CryoSat-2 estimates of Arctic sea ice thickness and volume, *Geophys. Res. Lett.*, 40, 732–737, doi:10.1002/grl.50193, <http://dx.doi.org/10.1002/grl.50193>, 2013.

- Li, L., Miller, A. J., McClean, J. L., Eisenman, I., and Hendershott, M. C.: Processes driving sea ice variability in the Bering Sea in an eddy ocean/sea ice model: anomalies from the mean seasonal cycle, *Ocean Dynamics*, 64, 1693–1717, doi:10.1007/s10236-014-0769-7, <http://dx.doi.org/10.1007/s10236-014-0769-7>, 2014.
- Liu, F., Krieger, J. R., and Zhang, J.: Toward Producing the Chukchi–Beaufort High-Resolution Atmospheric Reanalysis (CBHAR) via the WRFDA Data Assimilation System, *Monthly Weather Review*, 142, 788–805, 2014.
- Morrison, H., Thompson, G., and Tatarskii, V.: Impact of Cloud Microphysics on the Development of Trailing Stratiform Precipitation in a Simulated Squall Line: Comparison of One- and Two-Moment Schemes, *Mon. Wea. Rev.*, 137, 991–1007, doi:10.1175/2008mwr2556.1, <http://dx.doi.org/10.1175/2008MWR2556.1>, 2009.
- Nakanish, M.: Improvement Of The Mellor-Yamada Turbulence Closure Model Based On Large-Eddy Simulation Data, *Boundary-Layer Meteorology*, 99, 349–378, doi:10.1023/a:1018915827400, <http://dx.doi.org/10.1023/A:1018915827400>, 2001.
- Notz, D.: Challenges in simulating sea ice in Earth System Models, *WIREs Clim Change*, 3, 509–526, doi:10.1002/wcc.189, <http://dx.doi.org/10.1002/wcc.189>, 2012.
- Perovich, D. K. and Elder, B. C.: Temporal evolution of Arctic sea-ice temperature, *Annals of Glaciology*, 33, 207–211, doi:10.3189/172756401781818158, <http://www.ingentaconnect.com/content/igsoc/agl/2001/00000033/00000001/art00033>, 2001.
- Pithan, F., Medeiros, B., and Mauritsen, T.: Mixed-phase clouds cause climate model biases in Arctic wintertime temperature inversions, *Clim Dyn*, 43, 289–303, doi:10.1007/s00382-013-1964-9, <http://dx.doi.org/10.1007/s00382-013-1964-9>, 2013.
- Porter, D. F., Cassano, J. J., and Serreze, M. C.: Analysis of the Arctic atmospheric energy budget in WRF: A comparison with reanalyses and satellite observations, *Journal of Geophysical Research: Atmospheres*, 116, D22 108, doi:10.1029/2011JD016622, <http://dx.doi.org/10.1029/2011JD016622>, d22108, 2011.
- Reynolds, R. W., Rayner, N. A., Smith, T. M., Stokes, D. C., and Wang, W.: An Improved In Situ and Satellite SST Analysis for Climate, *Journal of Climate*, 15, 1609–1625, doi:10.1175/1520-0442(2002)015<1609:aiisas>2.0.co;2, [http://dx.doi.org/10.1175/1520-0442\(2002\)015<1609:AIISAS>2.0.CO;2](http://dx.doi.org/10.1175/1520-0442(2002)015<1609:AIISAS>2.0.CO;2), 2002.
- Riihelä, A., Manninen, T., and Laine, V.: Observed changes in the albedo of the Arctic sea-ice zone for the period 1982–2009, *Nature Climate Change*, 3, 895–898, doi:10.1038/nclimate1963, <http://dx.doi.org/10.1038/nclimate1963>, 2013.
- Rinke, A., Maslowski, W., Dethloff, K., and Clement, J.: Influence of sea ice on the atmosphere: A study with an Arctic atmospheric regional climate model, *J. Geophys. Res.*, 111, D16 103, doi:10.1029/2005jd006957, <http://dx.doi.org/10.1029/2005JD006957>, 2006.
- Semmler, T., Cheng, B., Yang, Y., and Rontu, L.: Snow and ice on Bear Lake (Alaska) a sensitivity experiments with two lake ice models, *Tellus A*, 64, 17 339, doi:10.3402/tellusa.v64i0.17339, <http://www.tellusa.net/index.php/tellusa/article/view/17339>, 2012.
- Sorteberg, A., Kattsov, V., Walsh, J. E., and Pavlova, T.: The Arctic surface energy budget as simulated with the IPCC AR4 AOGCMs, *Clim Dyn*, 29, 131–156, doi:10.1007/s00382-006-0222-9, <http://dx.doi.org/10.1007/s00382-006-0222-9>, 2007.
- Steenefeld, G. J., van de Wiel, B. J. H., and Holtslag, A. A. M.: Modeling the Evolution of the Atmospheric Boundary Layer Coupled to the Land Surface for Three Contrasting Nights in CASES-99, *J. Atmos. Sci.*, 63, 920–935, doi:10.1175/jas3654.1, <http://dx.doi.org/10.1175/JAS3654.1>, 2006.
- Sterk, H. A. M., Steenefeld, G. J., and Holtslag, A. A. M.: The role of snow-surface coupling, radiation, and turbulent mixing in modeling a stable boundary layer over Arctic sea ice, *Journal of Geophysical Research: Atmospheres*, 118, 1199–1217, doi:10.1002/jgrd.50158, <http://dx.doi.org/10.1002/jgrd.50158>, 2013.
- Svensson, G. and Karlsson, J.: On the Arctic Wintertime Climate in Global Climate Models, *Journal of Climate*, 24, 5757–5771, doi:10.1175/2011jcli4012.1, <http://dx.doi.org/10.1175/2011JCLI4012.1>, 2011.

- Tjernström, M., Sedlar, J., and Shupe, M. D.: How Well Do Regional Climate Models Reproduce Radiation and Clouds in the Arctic? An Evaluation of ARCMIP Simulations, *J. Appl. Meteor. Climatol.*, 47, 2405–2422, doi:10.1175/2008jamc1845.1, <http://dx.doi.org/10.1175/2008JAMC1845.1>, 2008.
- Uttal, T., Curry, J. A., McPhee, M. G., Perovich, D. K., Moritz, R. E., Maslanik, J. A., Guest, P. S., Stern, H. L., Moore, J. A., Turenne, R., Heiberg, A., Serreze, M. C., Wylie, D. P., Persson, O. G., Paulson, C. A., Halle, C., Morison, J. H., Wheeler, P. A., Makshtas, A., Welch, H., Shupe, M. D., Intrieri, J. M., Stamnes, K., Lindsey, R. W., Pinkel, R., Pegau, W. S., Stanton, T. P., and Grenfeld, T. C.: Surface Heat Budget of the Arctic Ocean, *Bull. Amer. Meteor. Soc.*, 83, 255–275, doi:10.1175/1520-0477(2002)083<0255:shbota>2.3.co;2, [http://dx.doi.org/10.1175/1520-0477\(2002\)083<0255:SHBOTA>2.3.CO;2](http://dx.doi.org/10.1175/1520-0477(2002)083<0255:SHBOTA>2.3.CO;2), 2002.
- Valkonen, T., Vihma, T., Johansson, M. M., and Launiainen, J.: Atmosphere–sea ice interaction in early summer in the Antarctic: evaluation and challenges of a regional atmospheric model, *Quarterly Journal of the Royal Meteorological Society*, 140, 1536–1551, doi:10.1002/qj.2237, <http://dx.doi.org/10.1002/qj.2237>, 2014.
- Vihma, T. and Pirazzini, R.: On the Factors Controlling the Snow Surface and 2-m Air Temperatures Over the Arctic Sea Ice in Winter, *Boundary-Layer Meteorol.*, 117, 73–90, doi:10.1007/s10546-004-5938-7, <http://dx.doi.org/10.1007/s10546-004-5938-7>, 2005.
- Vihma, T., Uotila, J., Cheng, B., and Launiainen, J.: Surface heat budget over the Weddell Sea: Buoy results and model comparisons, *Journal of Geophysical Research: Oceans*, 107, 5–1–5–15, doi:10.1029/2000JC000372, <http://dx.doi.org/10.1029/2000JC000372>, 2002.
- Wang, X. and Key, J. R.: Recent Trends in Arctic Surface, Cloud, and Radiation Properties from Space, *Science*, 299, 1725–1728, doi:10.1126/science.1078065, <http://www.sciencemag.org/content/299/5613/1725.abstract>, 2003.
- Wang, Y. and Liu, X.: Immersion freezing by natural dust based on a soccer ball model with the Community Atmospheric Model version 5: climate effects, *Environ. Res. Lett.*, 9, 124 020, doi:10.1088/1748-9326/9/12/124020, <http://dx.doi.org/10.1088/1748-9326/9/12/124020>, 2014.
- Wesslén, C., Tjernström, M., Bromwich, D. H., de Boer, G., Ekman, A. M. L., Bai, L.-S., and Wang, S.-H.: The Arctic summer atmosphere: an evaluation of reanalyses using ASCOS data, *Atmospheric Chemistry and Physics*, 14, 2605–2624, doi:10.5194/acp-14-2605-2014, <http://dx.doi.org/10.5194/acp-14-2605-2014>, 2014.
- Wyser, K., Jones, C. G., Du, P., Girard, E., Willén, U., Cassano, J., Christensen, J. H., Curry, J. A., Dethloff, K., Haugen, J.-E., Jacob, D., Körtzow, M., Laprise, R., Lynch, A., Pfeifer, S., Rinke, A., Serreze, M., Shaw, M. J., Tjernström, M., and Zagar, M.: An evaluation of Arctic cloud and radiation processes during the SHEBA year: simulation results from eight Arctic regional climate models, *Clim Dyn.*, 30, 203–223, doi:10.1007/s00382-007-0286-1, <http://dx.doi.org/10.1007/s00382-007-0286-1>, 2007.
- Yang, Y., Leppäranta, M., Cheng, B., and Li, Z.: Numerical modelling of snow and ice thicknesses in Lake Vanajavesi, Finland, *Tellus A*, 64, 17 202, doi:10.3402/tellusa.v64i0.17202, <http://dx.doi.org/10.3402/tellusa.v64i0.17202>, 2012.
- Zhang, J. and Rothrock, D. A.: Modeling Global Sea Ice with a Thickness and Enthalpy Distribution Model in Generalized Curvilinear Coordinates, *Mon. Wea. Rev.*, 131, 845–861, doi:10.1175/1520-0493(2003)131<0845:mgsiwa>2.0.co;2, [http://dx.doi.org/10.1175/1520-0493\(2003\)131<0845:MGSIWA>2.0.CO;2](http://dx.doi.org/10.1175/1520-0493(2003)131<0845:MGSIWA>2.0.CO;2), 2003.

Table 1. Summary of the major differences between Noah and HIGHTSI

| | <u>Noah</u> | <u>HIGHTSI</u> |
|---------------------------------------|--|--|
| <u>Snow layer</u> | <u>Single layer</u> | <u>Multiple layers (10 in this study)</u> |
| <u>Sea ice layer</u> | <u>4 layers</u> | <u>Multiple layers (20 in this study)</u> |
| <u>Ice thickness</u> | <u>No ice accretion and ablation process</u> | <u>With surface and basal ice accretion and ablation</u> |
| <u>Penetration of solar radiation</u> | <u>Only in snow layer</u> | <u>In both snow and sea ice layers</u> |
| <u>Surface characteristics</u> | <u>Always covered by snow</u> | <u>Includes different treatments for snow and bare-ice surface</u> |

Table 2. Experiment setup for studying the impact of the sea ice thickness specification

| <u>Experiment</u> | <u>Model</u> | <u>Sea ice thickness specification</u> |
|-------------------|--------------------|--|
| <u>Noah</u> | <u>WRF-Noah</u> | <u>Prescribed with PIOMAS reanalysis</u> |
| <u>Noah_3m</u> | <u>WRF-Noah</u> | <u>Fixed at 3 m</u> |
| <u>HIGHTSI</u> | <u>WRF-HIGHTSI</u> | <u>Prescribed with PIOMAS reanalysis</u> |
| <u>PARAM</u> | <u>WRF-HIGHTSI</u> | <u>Parameterized from Eq. (1)</u> |
| <u>THERM</u> | <u>WRF-HIGHTSI</u> | <u>Initialized from Eq. (1), evolves freely by considering thermodynamic processes</u> |

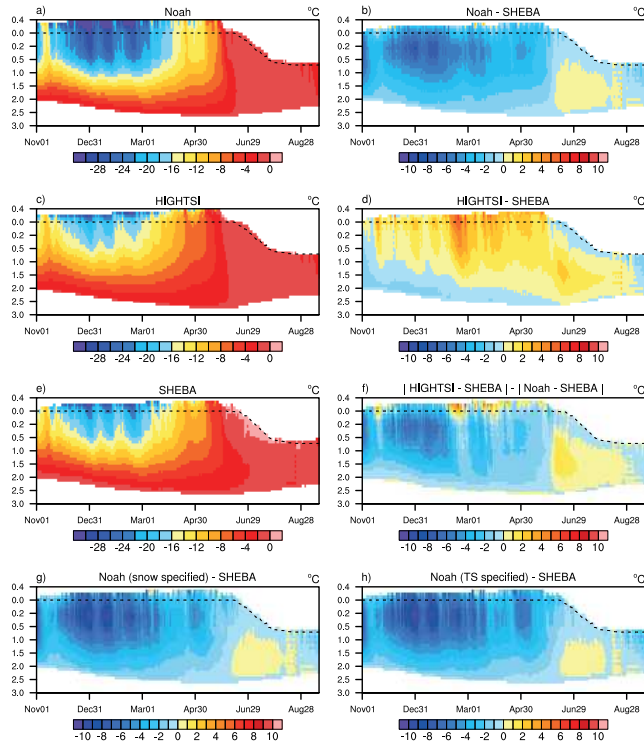


Figure 1. The evolution of sea ice temperature: results from (a) Noah, (c) HIGHTSI and (e) SHEBA observation; bias of (b) Noah, (d) HIGHTSI, (g) Noah with specified snow depth on sea ice, and (h) Noah with specified snow depth and surface temperature on sea ice; and (f) the difference between the absolute bias of HIGHTSI and SHEBA.

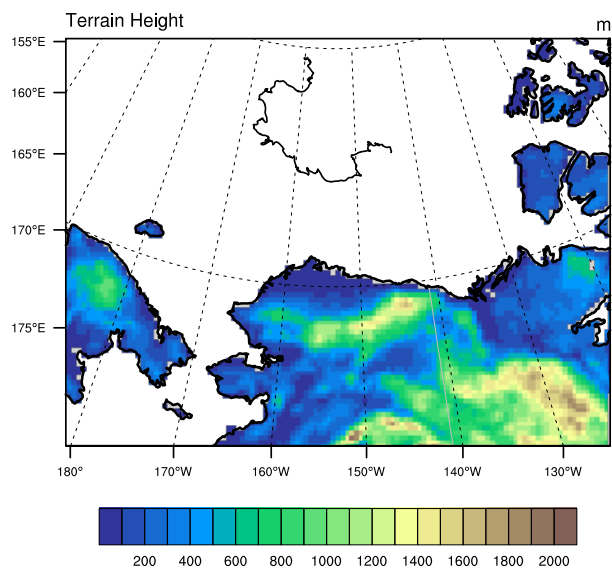


Figure 2. Topography of the simulation domain. SHEBA site locations are marked by the black curve.

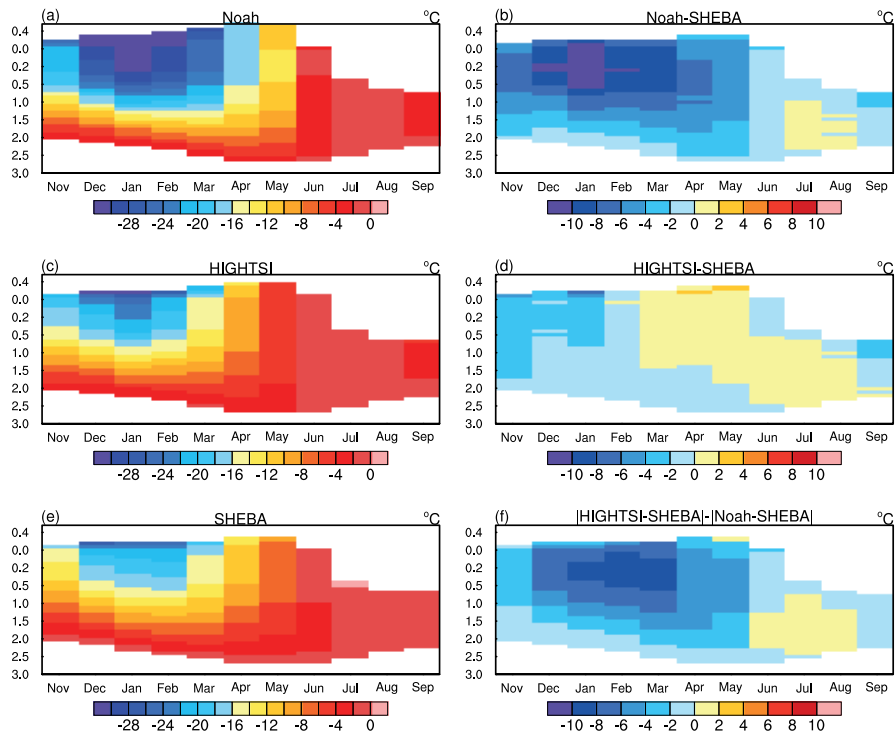


Figure 3. The evolution of monthly mean sea ice temperature: results from (a) Noah, (c) HIGHTSI and (e) SHEBA observation; bias of (b) Noah and (d) HIGHTSI; and (f) the difference between the absolute bias of HIGHTSI and SHEBA.

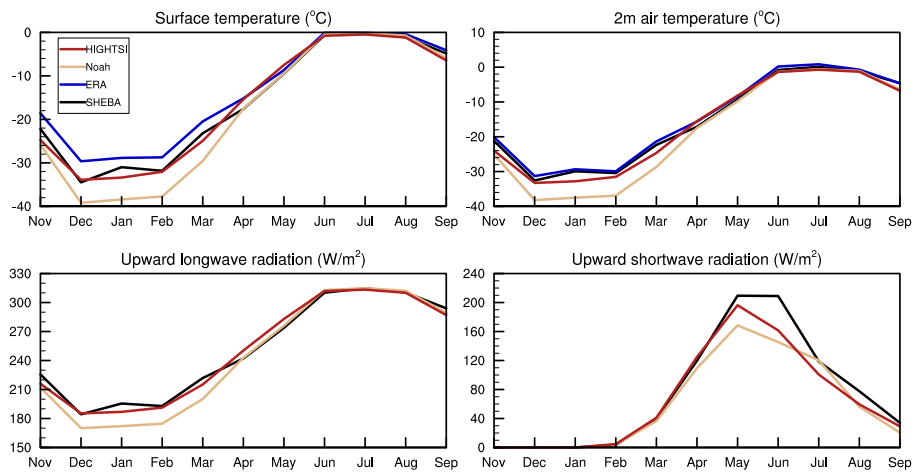


Figure 4. Monthly mean surface temperature, 2 m air temperature and surface upward longwave and shortwave radiation simulated and observed at the SHEBA sites.

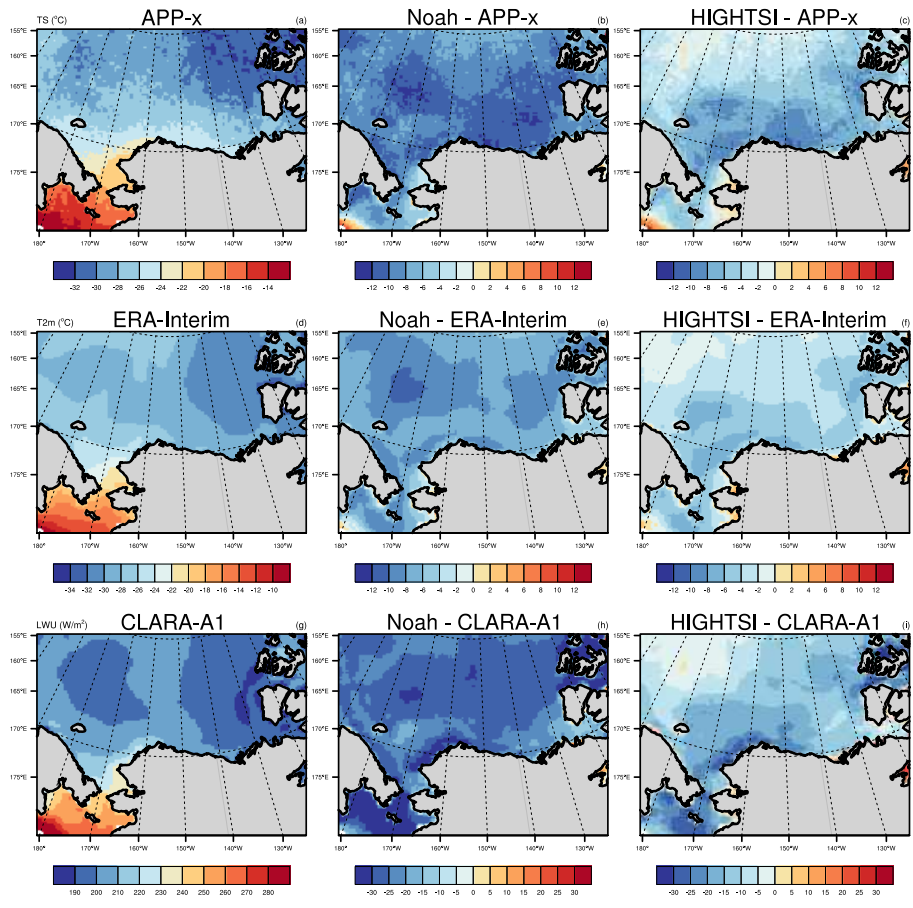


Figure 5. Surface temperature, 2 m air temperature and surface upward longwave radiation over sea ice surface in January 1998: observations and bias in Noah and HIGHTSI.

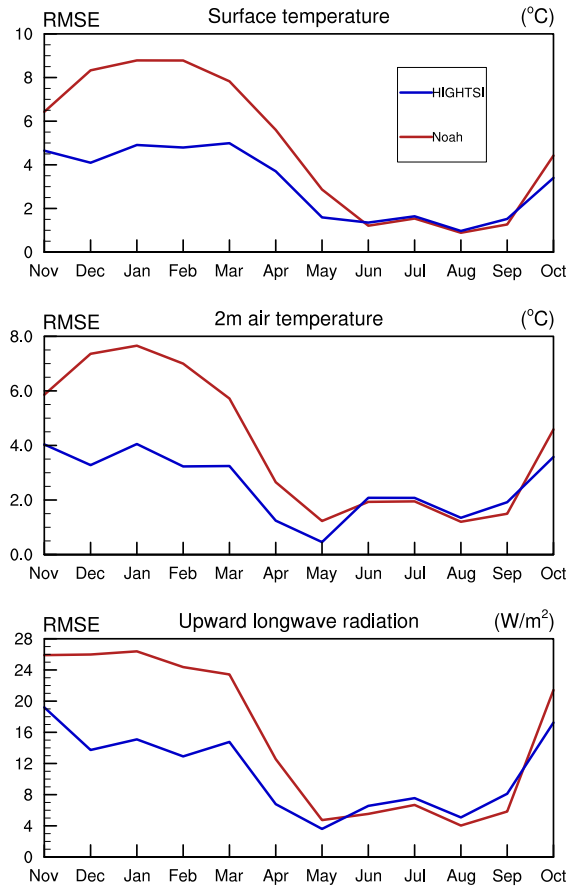


Figure 6. RMSE of surface temperature, 2 m air temperature and upward longwave radiation for WRF-Noah and WRF-HIGHTSI.

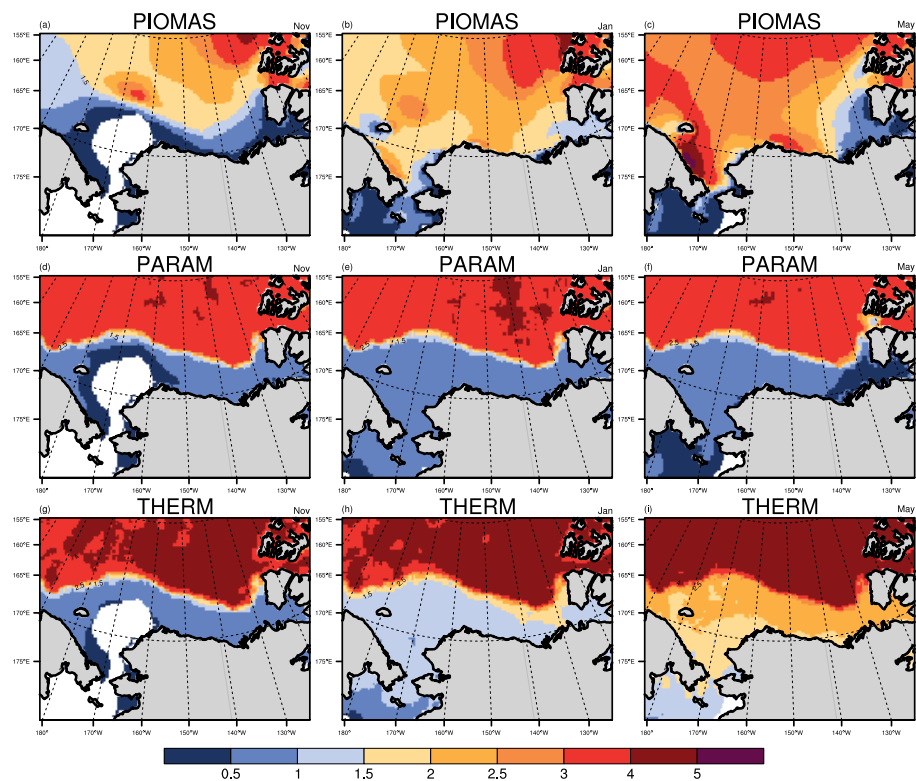


Figure 7. Sea ice thickness in PIOMAS, PARAM and THERM during November 1997, January 1998 and May 1998.

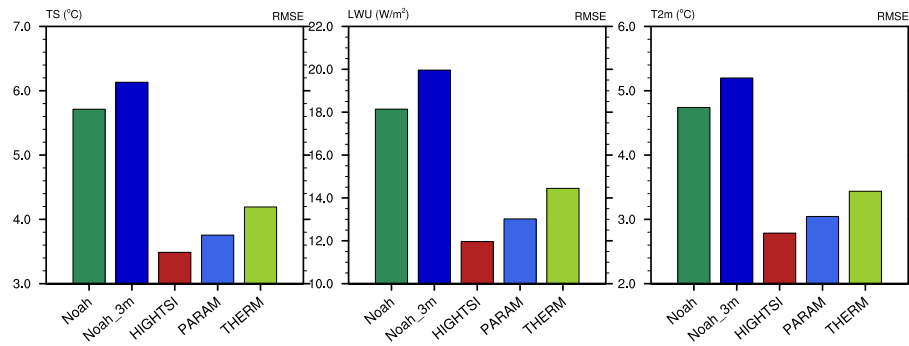


Figure 8. RMSE of surface temperature, upward longwave radiation and 2 m air temperature for WRF-Noah and WRF-HIGHTSI prescribed with different sea ice thicknesses.