

Interactive comment on “Characterising Brazilian biomass burning emissions using WRF-Chem with MOSAIC sectional aerosol” by S. Archer-Nicholls et al.

S. Archer-Nicholls et al.

scott.archer-nicholls-2@postgrad.manchester.ac.uk

Received and published: 21 January 2015

We thank referee #1 for their helpful comments. Our responses to specific comments are included in the supplement to this note.

Please also note the supplement to this comment:

<http://www.geosci-model-dev-discuss.net/7/C3036/2015/gmdd-7-C3036-2015-supplement.pdf>

Interactive comment on Geosci. Model Dev. Discuss., 7, 6061, 2014.

C3036

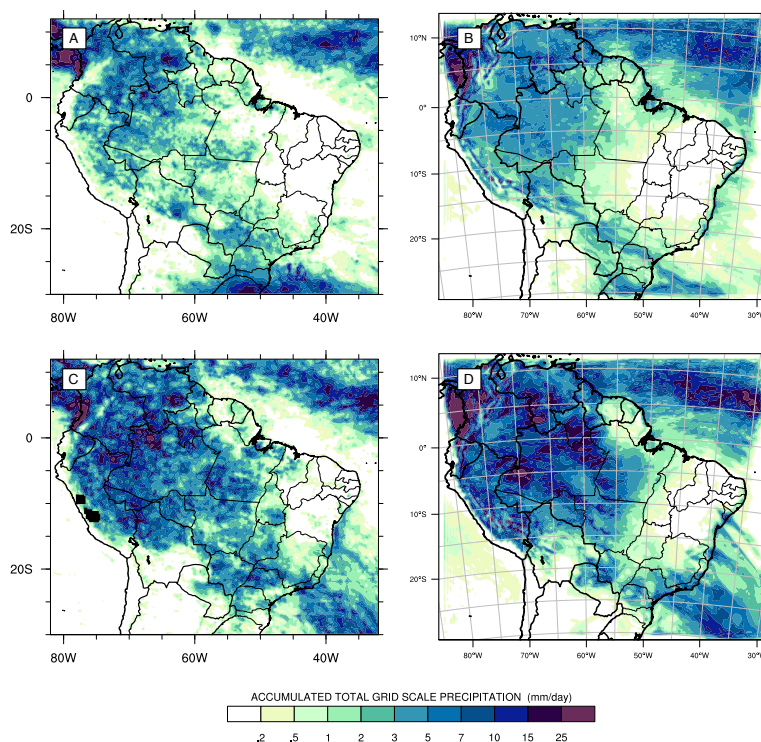


Fig. 1. Maps of averaged precipitation (mm/day). A and C derived from the TRMM 3B42 satellite product. B and D from WRF-Chem. A and B for Phase I (6-22 September 2012), C and D for Phase II (23-30 September).

C3037