

Interactive comment on “The implementation of a MiXed Layer model (MXL, v1.0) for the dynamics of the atmospheric boundary layer in the Modular Earth Submodel System (MESSy)” by R. H. H. Janssen and A. Pozzer

R. H. H. Janssen and A. Pozzer

ruud.janssen@mpic.de

Received and published: 28 November 2014

These are the figures that are mentioned in our reply

Interactive comment on Geosci. Model Dev. Discuss., 7, 7197, 2014.

Full Screen / Esc

Printer-friendly Version

Interactive Discussion

Discussion Paper

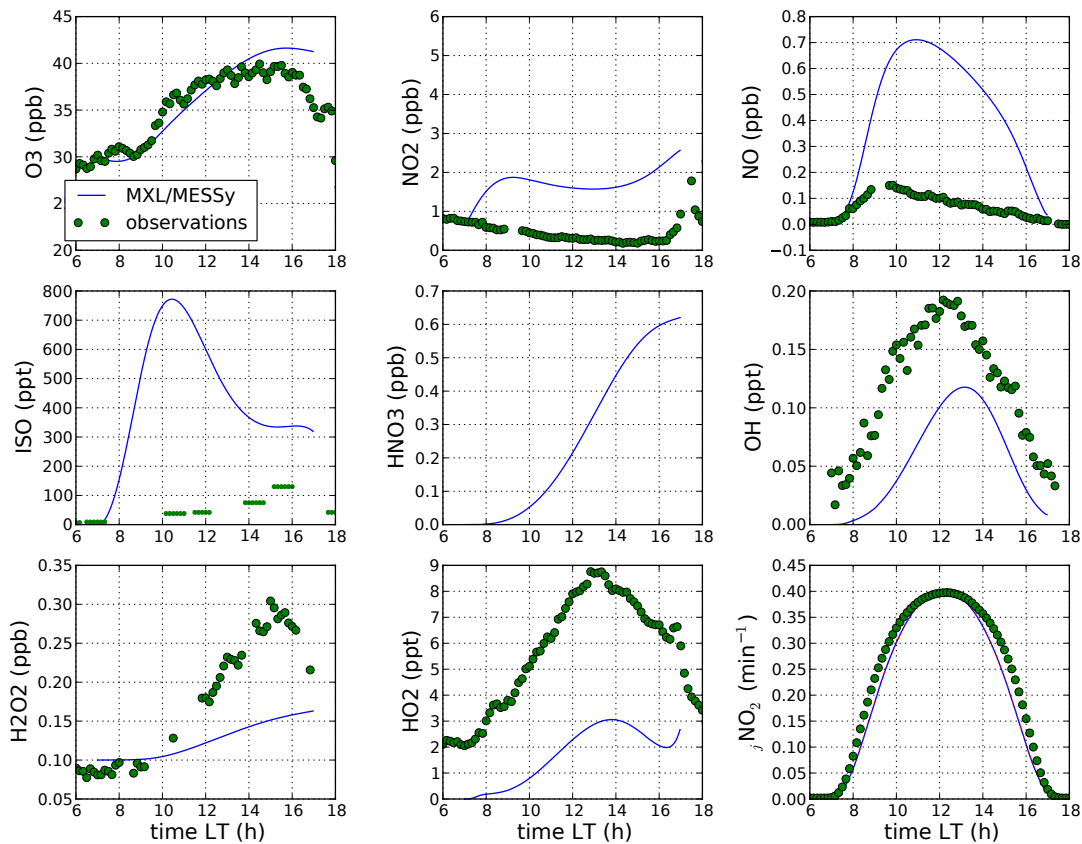


Fig. 1. Gas-phase chemistry for 10x emission scenario

[Full Screen / Esc](#)[Printer-friendly Version](#)[Interactive Discussion](#)[Discussion Paper](#)

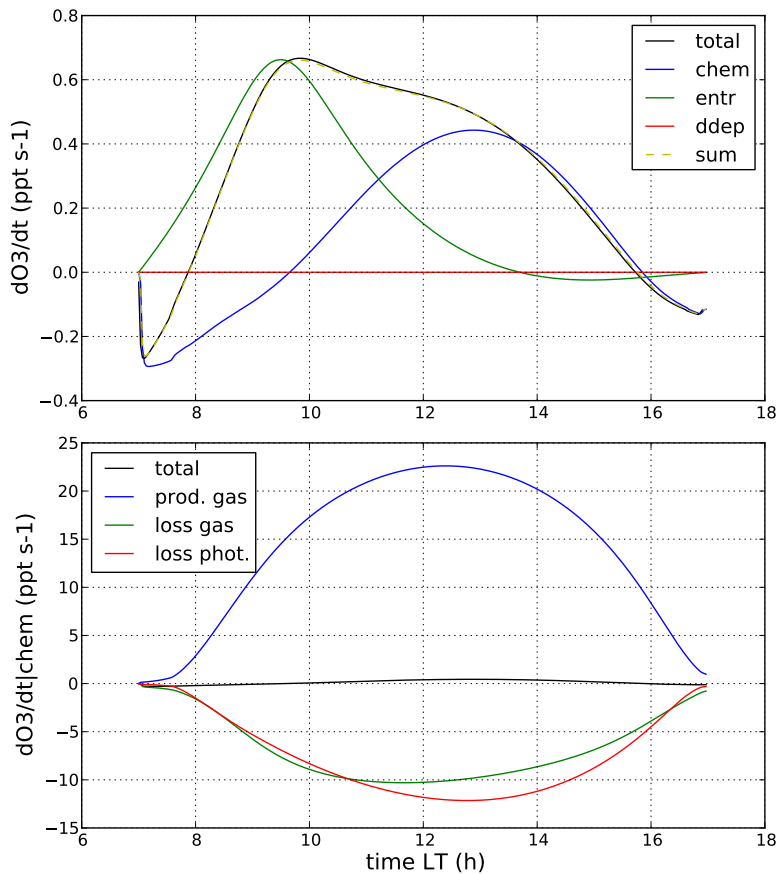


Fig. 2. O₃ budget for the 10x emission scenario