

## ***Interactive comment on “The implementation of a MiXed Layer model (MXL, v1.0) for the dynamics of the atmospheric boundary layer in the Modular Earth Submodel System (MESSy)” by R. H. H. Janssen and A. Pozzer***

R. H. H. Janssen and A. Pozzer

ruud.janssen@mpic.de

Received and published: 28 November 2014

These are the figures that are mentioned in our reply

Interactive comment on Geosci. Model Dev. Discuss., 7, 7197, 2014.

C2480

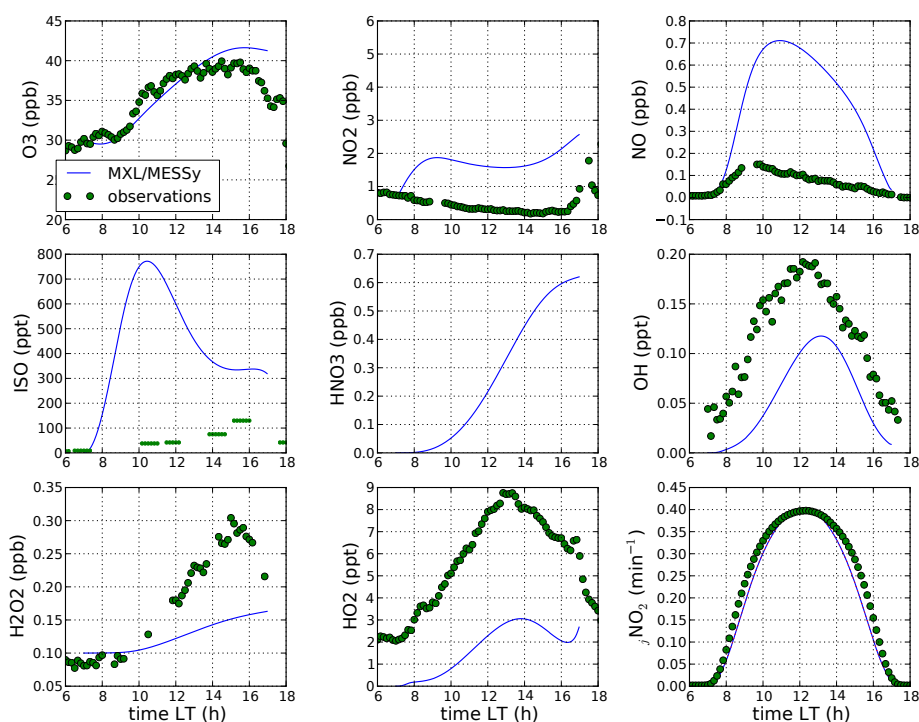
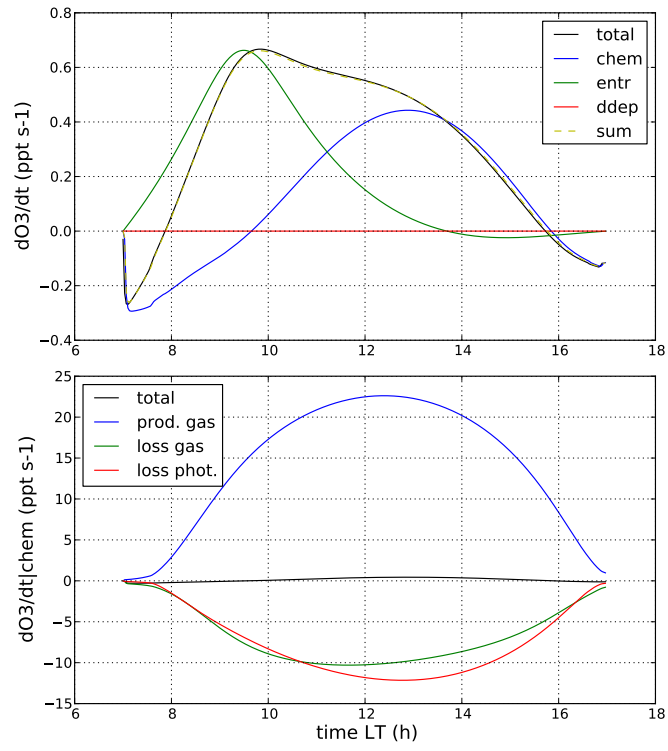


Fig. 1. Gas-phase chemistry for 10x emission scenario

C2481



**Fig. 2.** O<sub>3</sub> budget for the 10x emission scenario

C2482