

Editor: I would suggest that the authors consider uploading the Skogen and S iland user’s guide as supplementary material if possible. This follows the suggestion made in the abstract of GMD’s 2013 editorial:

http://www.geoscientific-model-development.net/gmd_journal_white_paper.pdf

Reply: We have asked the permission of first author Morten Skogen and will upload the report as supplementary material.

Editor: If I am reading this correctly, this analysis has focused on the drift of basin-averaged nutrients. If the basin is large enough, or the input / output fluxes small enough, this sort of drift is always going to be small in size. I believe that the referee was more concerned with the behaviour at smaller scales, for instance for particular water columns. At such scales, there could be large interannual drifts as the model redistributes its currency around its domain even if the total inventory of the same currency shows almost no change. In such a case, it would be difficult to judge the model as being at “steady state”.

That said, in a spatially-resolved model such as this one, driven under observationally-derived forcing for a relatively small number of years, it is not straightforward to establish “steady state”. However, it should still be possible to show how basin-scale properties (or perhaps those in the sub-regions studied in this manuscript) vary with time. I’m thinking here of primary production, plankton biomasses, surface / deep nutrient concentrations. Time-series plots showing how these integrated or averaged properties “level off” over a few years should give an idea of how close to “steady state” the model is. It should also reassure readers that sufficient time has been allowed for the model to reach a semi-repeating annual cycle in these major properties in the sub-regions of interest.

Reply: A figure showing the evolution in three different subdomains of the model has been added to supplementary material and the text describing the drift now reads:

“During the spin-up there was an adjustment of basin-averaged silicate of about 0.2 mmol/m^3 during the first year, followed by a decreasing trend of about 0.2 mmol/m^3 per decade that continues throughout the model run. For the basin-averaged nitrate and phosphate there are no initial adjustments, but throughout the run there are decreasing trends of less than 0.1 mmol/m^3 and 0.004 mmol/m^3 per decade respectively. The drift in the North Atlantic and the Norwegian Sea and Barents Sea boxes (Figure 1) are larger than for the entire domain (Figure S1). The largest changes are the level from 100 to 500 meters and the same reduction of nutrients is seen in the surface values during winter. There is a small reduction in maximum phytoplankton over time, but primary production shows no drift. The basin-scale drift of nutrients was investigated previously in a 50-year run with HYCOM-NORWECOM V1.0 on the coarse model grid also used in this study. There was a small drift for the concentration of all three nutrients of $\sim 0.1 \text{ mmol/m}^3$ for nitrate (increase) and silicate (decrease) and a $\sim 0.01 \text{ mmol/m}^3$ decrease of phosphate (Hansen, 2008), therefore we do not anticipate that this drift will subside with time and conclude that three years spin-up is sufficient for the system.”

Editor: Your Figure R4 may show the reason for this – the parameterisations of the functional forms used means that the shape of the response curve is not significantly different for the range of zooplankton concentrations studied. I’ve found this in some of my own work (e.g. Yool et al., GMD, 2011), and I would expect it to be a feature of many models. If you include Figure R4 in the manuscript (as supplementary material?), you could modify your text to draw attention to this lack of strong difference in functional response for reasonable values.

Reply: We have included the figure as supplementary material and added text to the discussion section:

“The zooplankton mortality is the closure term in the model, but contrary to some earlier studies (e.g Steele and Henderson, 1992) perturbations of the functional form of the mortality in N04 had little effect on the results. One possible explanation for the low sensitivity is that the zooplankton mortality resulting from the different functional forms is not very different over the range of common zooplankton concentrations (Figure S6). A similar response of the model to the functional form of the zooplankton mortality was found in another modelling study (Yool et al., 2011).”

Editor: See my previous remark. If you include Figure R4, this response can be strengthened somewhat.

Reply: see previous point.

Pg. 15: Change this text “We have shown that the model reproduces a reasonable annual cycle, but one persistent challenge the initiation time of the spring bloom is later than the observations” to “We have shown that the model reproduces a reasonable annual cycle, but the initiation time of the spring bloom is consistently later than the observations”

Reply: Done.

Pg. 16: Change this text “(the early seeding of the spring bloom by phytoplankton that was mixed down during winter: Backhaus et al., 1999)” to “(the early seeding of the spring bloom by phytoplankton entrained from the shallow seafloor by winter convection; Backhaus et al., 1999)”

Reply: According to Backhaus 2003 phyto-convection is not only a seeding mechanism in shallow areas, but also can be a seeding mechanism in the open ocean, therefore we chose to keep the sentence as it is, but have added a reference to Backhaus 2003:

Backhaus J.O., E. Nøst Hegseth, H. Wehde, X. Irigoien, K. Hatten, and K. Logemann (2003): Convection and primary production in winter. Mar Ecol Prog Ser 251, 1-14.

Figure 10: The second panel of this figure is fairly impenetrable. It looks to me like the months of January, March and November could be removed without impacting the figure at all. It might also be an idea to retain the colour scheme from the first panel, and show the months of May, July and September as dotted, dashed and solid lines.

Reply: we chose to remove the winter months from the (b) panel, the figure looks much better now.

Other changes:

We rearranged the order of the supplementary materials in order to so that the reference in the text to Figure S1, S2, S3 etc. comes in that order.

1 **Tuning and assessment of the HYCOM-NORWECOM V2.1**
2 **biogeochemical modeling system for the north Atlantic and**
3 **Arctic Ocean**

4

5 **A. Samuelsen¹, C. Hansen² and H. Wehde²**

6 [1] Nansen Environmental and Remote Sensing Centre and Hjort Centre for Marine
7 Ecosystem Dynamics, Thormøhlensgate 47, 5006 Bergen, Norway

8 [2] Institute of Marine Research and Hjort Centre for Marine Ecosystem Dynamics,
9 Nordnesgaten 33, 5005 Bergen, Norway

10 Correspondence to: A. Samuelsen (annette.samuelsen@nersc.no)

11

12 **Abstract**

13 The HYCOM-NORWECOM modeling system is used both for basic research and as a part of
14 the forecasting system for the Arctic Marine Forecasting Centre through the MyOcean
15 project. Here we present a revised version of this model. The present model, as well as the
16 sensitivity simulations leading up to this version, have been compared to a dataset of in-situ
17 measurements of nutrient and chlorophyll from the Norwegian Sea and the Atlantic sector of
18 the Arctic Ocean. The model revisions having most impact included adding diatoms to the
19 diet of micro-zooplankton, increasing micro-zooplankton grazing rate and decreased silicate-
20 to-nitrate ratio in diatoms. Model runs are performed both with a coarse- (~50 km) and
21 higher-resolution (~15km) model configuration, both covering the North Atlantic and Arctic
22 Ocean. While the new model formulation improves the results in both the coarse- and high-
23 resolution model, the nutrient bias is smaller in the high-resolution model, probably as a result
24 of the better resolution of the main processes and improved circulation. The final revised
25 version delivers satisfactory results for all three nutrients as well as improved result for
26 chlorophyll in terms of the annual cycle amplitude. However, for chlorophyll the correlation
27 with in-situ data remains relatively low. Besides the large uncertainties associated with
28 observational data this is possibly caused by the fact that constant C/N- and CHL/N ratios are
29 implemented in the model.

1

2 **1 Introduction**

3 Physical ocean forecasting systems are now operational in many ocean regions (Le Traon,
4 2013) and in several forecasting systems biogeochemical models have been included
5 (Edwards et al., 2012; Wan et al., 2012). Biogeochemical processes in the ocean are less well
6 understood than those of physics, and model formulations and parameterizations are
7 correspondingly less well developed or constrained. Additionally, relative to ocean physics,
8 there are fewer observational data for the validation and evaluation of modelled
9 biogeochemistry. At the same time, operational systems including biogeochemical variables
10 can supply valuable information on environmental indicators such as oxygen concentration,
11 N/P-ratios, and algae concentrations. Over time, they may give information on accumulated
12 quantities, such as annual primary production and inter-annual variability in phytoplankton
13 production. Data assimilation is also being used for improving the model predictions (Sakov
14 et al., 2012) and for estimating unknown parameters, the assimilation of ocean color data in
15 operational models is underway.

16 HYCOM-NORWECOM is used as a part of the operational system for the Arctic (the Arctic
17 Marine Forecasting Centre) implemented through the EU-FP7 supported MyOcean project.
18 The biogeochemical forecast has been operational since the fall of 2011. In connection to the
19 setup of the biogeochemical part of the forecasting system, a series of sensitivity runs testing
20 alternative model formulations were performed and a subsequent update of the HYCOM-
21 NORWECOM system was implemented. The final model formulation chosen was uploaded
22 to the forecasting system in October 2012 and is now the operational model used. Daily
23 values of nutrient, phytoplankton, oxygen etc. can be browsed at
24 <http://www.myocean.eu/web/24-catalogue.php> and downloaded after registration. Focal areas
25 for this study are the Nordic Seas and the Arctic. These areas contribute to a large fraction of
26 the world ocean carbon sink (Takahashi et al., 2009). Aside from assessing the whole model
27 area (Fig. 1) we focus the comparison on two smaller regions, one in the Norwegian Sea,
28 important area for the heat transport into the Nordic Seas and one in the Barents Sea where
29 one of the branches of Atlantic Water enters the Arctic Ocean.

30 Here we present HYCOM-NORWECOM V2.0 and V2.1 together with the sensitivity
31 simulations leading up to the V2.1 (Table 1). The model results are evaluated against an in-
32 situ dataset for the Norwegian Sea and the statistical results are presented. The HYCOM-

1 NORWECOM model was tested against local in-situ observations and derived gridded
2 climatology of nutrients, as well as satellite data. However, we found that the in-situ data was
3 the most instructive and the tuning relied most heavily on this dataset when making the
4 upgrade. Statistical measures of the models performance for each of the parameter sets were
5 calculated in sub-regions as well for the entire area.

6 **2 Methods**

7 **2.1 Model description**

8 HYCOM-NORWECOM is a coupled physical biological modeling system. HYCOM
9 (v2.2.12), the HYbrid Coordinate Ocean Model (Bleck, 2002), is an ocean model using hybrid
10 coordinates; isopycnal coordinates in the deep stratified waters, and z-level coordinates in the
11 upper mixed layer. A description of this setup of HYCOM can be found in Sakov et al.
12 (2012) and user guides for the different versions of HYCOM are available online at
13 <http://hycom.org/hycom/documentation>. HYCOM is routinely used for forecasting and the
14 predictions are regularly evaluated using in-situ and remote-sensing observations of salinity,
15 temperature and sea ice (<http://myocean.met.no/ARC-MFC/V2Validation/index.html>).
16 Comparisons between observations, free-runs (used in this study) and assimilative runs can be
17 found in Sakov et al. (2012) and Samuelsen et al. (Samuelsen et al., 2009a). NORWECOM
18 (Aksnes et al., 1995; Skogen and Søiland, 1998) is currently run with 11 variables: nitrate,
19 phosphate, silicate, diatoms, flagellates, micro- and meso-zooplankton, nitrogen detritus,
20 phosphorous detritus, biogenic silica and oxygen (Fig. 2). The micro- and meso-zooplankton
21 were recently added and use the formulations and parameters defined in ECOHAM (Pätsch
22 and Kühn, 2008; Stegert et al., 2009). The coupling of NORWECOM towards HYCOM was
23 first done in 2005 and has been used for several studies in the Norwegian Sea and North
24 Atlantic (Hansen et al., 2010; Samuelsen et al., 2009b). An overview of the different version
25 can be found in Table 1.

26 The complete description of the NORWECOM V2.0 can be found in the user guide (Skogen
27 and Søiland, 1998), below we provide a description of the differences in the biogeochemical
28 formulations in HYCOM-NORWECOM here compared to that version. With regards to
29 nutrient limitation the NORWECOM V2.0 applied a multiplicative relationship for the total
30 growth (μ_{phy}) of phytoplankton:

$$1 \quad \mu_{phy} = \mu_{max} \times \text{Rad_lim} \times \prod_{i=1}^n \text{Nut_lim}_i \quad (1)$$

2 Where μ_{max} is the maximum growth rate, Rad_lim is the growth limitation due to light and
 3 Nut_lim_{*i*} is the growth limitation for nutrient *i*. In HYCOM-NORWECOM it is the minimum
 4 of the limitation factors that determines the growth:

$$5 \quad \mu_{phy} = \mu_{max} \times \min(\text{Rad_lim}, \text{Nut_lim}_{i,j=1,n}) \quad (2)$$

6 Except for when growth is not limited, formulation (1) will give a smaller growth rate than
 7 formulation (2) since the value of the limitation of light and nutrients are always between 0
 8 and 1.

9 As in NORWECOM V2.0 (Skogen and S oiland, 1998), the main distinction between diatoms
 10 and flagellates in NORWECOM is that diatoms consume and is limited by silicate in addition
 11 to phosphate and nitrate. Diatoms have higher maximum growth rate than flagellates (Table
 12 2), but the temperature-dependence for growth is the same, following Eppley (1972). The
 13 half saturation constants for nitrate and phosphate are smaller for flagellates ($K_N=1.5$
 14 mmol/m^3 and $K_P=0.094 \text{ mmol/m}^3$) than for diatoms ($K_N=2.0 \text{ mmol/m}^3$ and $K_P=0.125$
 15 mmol/m^3). The model assumes constant N/Chl-ratio (11 g N/g Chl in the control run).

16 NORWECOM V2.0 was primarily applied to the North Sea, while HYCOM-NORWECOM,
 17 focused the open ocean regions of the North Atlantic, therefore the extinction coefficient due
 18 to water and non-chlorophyll substances was reduced from 0.07 to 0.04 (Hansen and
 19 Samuelsen, 2009).

20 | NORWECOM V2.0 (Skogen and S oiland, 1998 - [supplementary material](#)) did not include
 21 zooplankton, but now there is an option of running the model with two zooplankton
 22 components, microzooplankton and mezozooplankton. The formulations for zooplankton are
 23 the same as in ECOHAM (P atsch and K uhn, 2008), but modified to adjust for differences in
 24 the food-web structure. In HYCOM-NORWECOM, the mortality rate for phytoplankton
 25 independent of grazing is 0.035. When zooplankton is excluded, a quadratic relationship
 26 representing both grazing and other causes of mortality is used. Zooplankton grazing (*G*) by a
 27 size-class of zooplankton (*Z*) on a specific food source (*fs*) is described by:

$$28 \quad G_{fs,Z} = \frac{T_{fac}g}{k + \sum P_{fs,Z} \cdot fs} \cdot fs \cdot Z \quad (3)$$

1 Here, T_{fac} is the temperature dependence $T_{fac} = 1.5^{\frac{T-T_0}{10}}$, where T is the local temperature and
 2 T_0 is set to 10°C, g is the maximum grazing rate (0.4 day⁻¹ for mesozooplankton and 0.5 day⁻¹
 3 for microzooplankton) and k is the half saturation constant for zooplankton grazing which is
 4 set to 1 mmolN/m³ for both size classes of zooplankton.

$$5 \quad P_{fs,z} = \frac{p_{i_{fs,z}} f s_i}{\sum p_{i_{fs,z}} f s_i} \quad (4)$$

6 where $p_{i_{fs}}$ are the grazing preferences for the different food sources, the grazing preferences
 7 for microzooplankton can be found in Table 2, while the preferences for mesozooplankton are
 8 0.45 for diatoms and 0.275 for both microzooplankton and detritus.

9 The assimilation efficiency for both size-classes of zooplankton is set to 0.75 (Pätsch et al.,
 10 2009) and the mortality rate (M_z) is also formulated as a half saturation relationship:

$$11 \quad M_z = m_z \frac{Z}{k_m + Z} \quad (5)$$

12 where m_z is the maximum mortality rate (0.2 day⁻¹) and the half saturation constant k_m is 0.2
 13 mmolN/m³ for both size classes of zooplankton. For the loss terms of zooplankton 90% of
 14 the material goes into the detritus pool and 10% is returned to nitrate.

15 **2.2 Experiment setup**

16 The tuning was done on a coarser grid (30-50 km) than the 15-km grid (Fig. 1) used in the
 17 operational runs to limit the computational cost, as the 15-km model takes about 5 times as
 18 long to run. The model was forced by the ERA-Interim (Dee et al., 2011) from 1989 and
 19 ERA40 (Uppala et al., 2005) for the period prior to 1989 (only spinup). The physical model
 20 was initialized from rest with climatological temperatures and salinity from the GDEM
 21 (Carnes, 2009). The biogeochemical model was initialized from climatological nutrients and
 22 oxygen values from the Worlds Ocean Atlas (WOA2001: Conkright et al., 2002) and constant
 23 low values for the other variables in 1993. Throughout the run relaxation back to
 24 climatological temperature, salinity, nutrients and oxygen was applied at the lateral
 25 boundaries. A weak relaxation of salinity (relaxation timescale of 200 days) was also applied
 26 at the surface. River nutrients were derived from GlobalNEWS model output (Seitzinger et
 27 al., 2005). In all, 16 sensitivity simulations were performed with the coarse model
 28 (simulation names starting with N) and the parameter changes in each run are summarized in

1 Table 2 and the location of the relevant code is given in Table A1. In order to assess the
2 effect of the revised parameter set on the 15-km model, two simulations were performed; one
3 with the with the higher resolved grid (simulation names starting with TP); the original set of
4 parameters (TP0) and one with revised set of parameters (TP1). The model was started from
5 climatological nutrient values and constant low values for the other variables in 1993. In
6 order to spin up the model, it was then run with the original parameters from 1993-1995.
7 During the spin-up there was an adjustment of basin-averaged silicate of about 0.2 mmol/m^3
8 during the first year, followed by a decreasing trend of about 0.2 mmol/m^3 per decade that
9 continues throughout the model run. For the basin-averaged nitrate and phosphate there are
10 no initial adjustments, but throughout the run there are decreasing trends of less than 0.1
11 mmol/m^3 and 0.004 mmol/m^3 per decade respectively. The drift in the North Atlantic and the
12 Norwegian Sea and Barents Sea boxes (Figure 1) are larger than for the entire domain (Figure
13 S1). The largest changes are the level from 100 to 500 meters and the same reduction of
14 nutrients is seen in the surface values during winter. There is a small reduction in maximum
15 phytoplankton over time, but primary production shows no drift. The basin-scale drift of
16 nutrients was investigated previously in a 50-year run with HYCOM-NORWECOM V1.0 on
17 the coarse model grid also used in this study. There was a small drift for the concentration of
18 all three nutrients of $\sim 0.1 \text{ mmol/m}^3$ for nitrate (increase) and silicate (decrease) and a ~ 0.01
19 mmol/m^3 decrease of phosphate (Hansen, 2008), therefore we do not anticipate that this drift
20 will subside with time and conclude that three years spin-up is sufficient for the system. The
21 sensitivity simulations were initiated in 1996 and run for a 6-year period. The impact of a
22 single parameter or model formulation change was investigated in 11 sensitivity simulations.
23 Subsequently the impact of five different combinations of these alterations was studied.
24 Model-observation comparisons were performed in the period 1998 to 2001 because of
25 relatively good in-situ data coverage combined with availability of ocean colour data in this
26 period.

27 The model results to be compared to in-situ data was extracted from the model from files
28 containing daily averages. The modeled values from the grid box and model layer containing
29 the observation point on the day of the observation were selected. The model results were not
30 interpolated temporally or spatially. In the case of several observations within the same grid
31 cell and layer, the mean of the observed values was used.

Annette Samuelsen 6/10/2015 3:34 PM
Deleted:

1 2.3 Description of observations

2 An observational dataset collected as a part of the Norwegian Institute of Marine Research
3 monitoring activities was used. In addition to comparing the simulations to the entire dataset,
4 we also focused the comparison on two sub-regions; one in the Norwegian Sea and one the
5 Barents Sea (Fig. 3). The available in-situ data relevant to the NORWECOM model are
6 nutrients (silicate, nitrate, nitrite and phosphate) and chlorophyll, obtained by analysis of
7 discrete water samples. Because we only have one type of nitrogen nutrient source in the
8 model, the modeled nitrate was compared to the sum of observed nitrate and nitrite. The
9 Norwegian Sea sub-region includes Station M and thus observational data are available
10 throughout the year for all of the variables, while in the Barents Sea observations are collected
11 primarily during August and September (Fig. 3).

12 2.4 Statistical method for model evaluation

13 In the paper by Allen et al. (2007), several metrics for evaluation of biogeochemical models
14 were presented. A combination of model efficiency (ME) and percentage model bias (Pbias)
15 was used for the comparison between the model simulations and observations. These
16 statistical quantities are defined as:

$$17 \quad ME = 1 - \frac{\sum_{n=1}^N (D_n - M_n)^2}{\sum_{n=1}^N (D_n - \bar{D})^2} \quad (6)$$

18 where D_n is observation from station n, M_n is the corresponding model estimate, \bar{D} is the
19 mean of the observations, and N is the total number of stations. The model efficiency is a
20 measure of the model-observation misfit in relation to the variability of the observational data.

$$21 \quad Pbias = \frac{\sum_{n=1}^N (D_n - M_n)}{\sum_{n=1}^N D_n} \times 100 \quad (7)$$

22 Pbias gives an indication on whether the model results are consistently under- or
23 overestimated compared to the observations.

1 In addition, standard deviation, correlation coefficient and the centered root mean square error
2 of chlorophyll and nutrients were evaluated in Taylor diagrams (Taylor, 2001) that show the
3 overall quality of the runs.

4

5 **3 Results**

6 **3.1 Performance of control runs**

7 The model efficiency showed that the results from the control runs with the original
8 parameters (N00 and TP0) were in general good with respect to nutrients (Fig. 4). The model
9 performance was better for nitrate and phosphate than for silicate. In terms of ME for the
10 nutrients there is little difference between the coarse and the fine model, but the results from
11 the high-resolution model is slightly better. The percentage bias is also similar in the two
12 control runs and again the estimates of nitrate and phosphate have higher skill compared to
13 silicate (Fig. 5). The bias is positive, meaning that the modeled nutrients are consistently
14 lower than the observed nutrients (eq. 7). The nutrient bias is slightly better in the high-
15 resolution model than the coarse model. Below 500 meters (not shown), nitrate and
16 phosphate are generally excellent in terms of bias, while silicate varies from excellent to
17 good, except for a region in the central Norwegian Sea where it is poor. However, since the
18 observed nutrients have low variability below 500 meters the ME shows no skill in most
19 regions. Below 500 meters the model is probably quite influenced by both initial condition
20 and the relaxation towards climatological nutrients at the boundary, as the residence time for
21 the deep waters is estimated to be 2-10 years (Aagaard et al., 1985). Above 500 meters, the
22 biases are generally poorer, while the model shows some skill in terms of predicting the
23 observed nutrients. For the upper waters masses the residence time in this region it is about 3
24 month (Poulain et al., 1996), hence the initial and boundary condition have limited influence
25 there.

26 The prediction of the chlorophyll content is even more challenging than for the nutrients.
27 Here the runs with the original parameter set for both resolutions show no skill for the ME
28 (Fig. 4) and large negative percentage biases (Fig. 5), meaning that the model consistently
29 overestimates the chlorophyll. For chlorophyll there is no consistent improvement with
30 resolution. Correlation between the observed and modeled chlorophyll is poor and the
31 amplitude of the annual cycle is overestimated (Fig. 6). Analyses have shown that the model

1 runs are consistently late in the spring bloom, a persistent feature in this model system (Figure
2 3: Samuelsen et al., 2009b).

3

4 **3.2 Parameter modifications**

5 As seen in section 3.1, the main challenge of the model lies in the overestimation of
6 chlorophyll during the summer months. Many of the parameter changes were thus aimed at
7 reducing the error in the phytoplankton fields, but as seen in figures 4 and 5 many of the
8 changes had a positive influence on the simulated nutrient values as well. The original and
9 new model formulations and parameter values of all the sensitivity simulations are listed in
10 Table 2.

11 The first run, N01, had quadratic rather than linear mortality of phytoplankton, this change
12 was aimed at increasing the phytoplankton losses during periods with high phytoplankton
13 biomass. This alteration had little effect on the results, nevertheless it was also tried in
14 combination with other parameter changes, N07 and N13, but no improvement was observed,
15 therefore this alteration was not included in the final model formulation.

16 In nature, a wide range of Si:N ratios are observed in diatoms (Sarhou et al., 2005), therefore
17 the second and third run, N02 and N03, altered the fixed uptake ratio of Si:N for diatoms, by
18 decreasing and increasing this value by 25% respectively. In the control runs the model
19 tended to consume all the silicate before nitrate in the spring, while this was not the case in
20 the observations. A reduction in this ratio improved the modeled silicate in terms of model
21 efficiency, while estimates of nitrate and phosphate gets reduced skill. This change however,
22 reduced the summer chlorophyll concentrations, most likely because the spring diatom bloom
23 consumed more nitrate, which is the limiting nutrient during the summer bloom. Increasing
24 the ratio had the opposite effect. Because large flagellate summer concentration has been a
25 recurring challenge in the model the reduced Si:N ratio was retained in some of the
26 subsequent runs.

27 The next three sensitivity simulations explored alterations to the zooplankton mortality term;
28 quadratic mortality (for both zooplankton size classes) – N04, increased and decreased
29 mesozooplankton mortality – N05 and N06. These alterations had little effect on the error
30 statistics and were not considered in any of the subsequent runs.

1 Three runs where the sensitivity to the choice of nitrate to chlorophyll ratio was investigated.
2 The first (N08) was a simple increase by 25%, while the values of 12.5 (N09) and 6.3 (N10)
3 were found in the literature (Fouilland et al., 2007; Yentsch and Vaccaro, 1958). In the North
4 Atlantic values varying from 1 to 12.5 was found in the literature (Fouilland et al., 2007;
5 Yentsch and Vaccaro, 1958). The alteration had little effect on the overall results for nutrient,
6 but a rather large effect on chlorophyll. In general an increase of this ratio lead to an
7 improvement in the chlorophyll comparison and a decrease to deterioration of the model
8 results. We did not alter this value during the tuning, but think that a mechanistic model
9 allowing for variable N:Chl ratio should be included in the model.

10 Motivated by the observation that diatoms can be consumed by microzooplankton (Sarhou et
11 al., 2005) we made an experiment where diatoms were included in the diet of
12 microzooplankton (N11). The microzooplankton grazing rate was also increased (N12).
13 These runs, especially N12, had a negative effect on the silicate results, but a positive effect
14 on the nitrate and phosphate. These changes also contributed to better results for the
15 chlorophyll. The increased microzooplankton grazing rate resulted in improved performance
16 of the model and it was the first simulation where the biases in both 1998 and 1999 were
17 better than 'Poor' for chlorophyll.

18 From the above simulations we learned that reduction of the Si:N-ratio and microzooplankton
19 grazing were the changes having the most positive impact on the model performance. Since
20 these changes to zooplankton grazing negatively affected the silicate results, this alteration
21 was combined with the reduction of the Si:N ratio in simulations N14 and N15. The run
22 including diatoms in the microzooplankton diet was combined with reduced Si:N ratio in run
23 N14, this only improved the silicate results. When these changes were also combined with
24 increased microzooplankton grazing (N15) the results for all nutrients improved. In the last
25 experiment, N16, a reduction of the maximum growth rate for both types of phytoplankton
26 were added to N15, this had an additional positive effect on the chlorophyll errors. The
27 parameter set in N16 was decided upon and studied in the high-resolution model.

28 **3.3 Assessment of revised model simulation**

29 The observations in some regions such as Station M and in the repeated sections (visible in
30 the winter panel of Fig. 3) are collected more systematically and are more numerous than in
31 the other regions. In the Norwegian Sea at Station M observations are available throughout

1 the year, in the repeated sections each season is sampled, and an extensive survey in of the
2 Barents Sea is done annually in August/September (Fig. 3). This should be kept in mind
3 when comparing the performance of the run with original and revised parameters in different
4 regions (Figs. 7 and 8). Overall the regional estimates were worse than the one including all
5 observational data, but there are also areas where there are significant improvements. The
6 results show that in terms of Pbias, nitrate and phosphate were improved in the central
7 Norwegian Sea and Eastern part of the Barents Sea (Fig. 7). In the northwest of the
8 Norwegian Sea eastern part of the Barents Sea there is little improvement, but the two latter
9 regions only have data in specific seasons (Fig. 3). For silicate the regions where there is
10 improvement is more intermittent, but the bias in the original run was 'poor' over most of the
11 region, this is no longer the case. The bias for chlorophyll changes sign, but not show any
12 regional improvement. The model efficiency shows improvement in the estimates of all three
13 nutrients, in particular in the central Norwegian Sea where the results were initially not so
14 good (Fig. 8). Chlorophyll remains below 'no skill' in the most of the domain, except for a
15 few places in east and north part of the domain, where it is 'good' (Fig. 8). Most of the
16 differences between the two runs occur in the upper 100 meters. Processes in the deeper
17 layers are slower and therefor we do not expect impacts by the parameter alterations in the
18 biogeochemical model on the time scale of the model simulation period. The difference
19 between the original and revised model run in the Norwegian and Barents Sea (boxes in Fig.
20 3) in terms of chlorophyll is summarized in a Taylor diagram (Fig. 6). This Taylor diagram
21 shows that overall the new runs are in better agreement with the observations, the
22 improvement is mostly in terms of reduced standard error (green dashed curves). The
23 amplitude is improved in the Norwegian Sea, but for the comparison to all observations it is
24 now too low. There are only small differences in the correlation coefficients, but they are
25 overall slightly lower in the run with revised parameterizations.

26 To assess the revised run at different depths, profiles in the upper 1000 meters of the water
27 column in the Norwegian Sea box have been compared to in-situ data for nitrate and
28 chlorophyll (Figs. 9 and 10). Below 200 meters the differences from observations are similar
29 for the two parameter sets. The same is the case for the upper 200 meters, during January and
30 April when the water column is well mixed and the surface concentrations reflect the deep
31 concentrations. During July the run with revised parameters is closer to the observation for
32 nitrate, but further from the observations for silicate (Figure S2), during October both of these
33 nutrients are closer to the observation with the revised parameters. For phosphate (Figure S3)

Annette Samuelsen 6/10/2015 4:04 PM

Deleted: 3

Annette Samuelsen 6/10/2015 4:04 PM

Deleted: 4

1 the original run is close to the observations at the surface, but closer to the observations
2 around 50 meters and also in the depth interval 400-800 meters. However, we have seen
3 before that there is an overall improvement in the surface nutrients for the run with the revised
4 model (Figs. 7 and 8). For chlorophyll (Fig. 10), it is clear that the overestimation of values
5 that occurs with the original parameterization has now been reduced to give reasonable
6 values. In April there is a clear indication in the observations that nutrients are being
7 consumed in the upper layers, this is not the case in either of the model runs, and consistent
8 with the modeled surface chlorophyll values that are lower than observed in this period (not
9 shown). The late onset of the spring bloom has been a persistent challenge in the model for
10 several years and seems to be related to delayed onset of stratification in the physical model
11 fields, rather than the biological formulations (Samuelson et al., 2009b).

12

13 **4 Discussion**

14 **4.1 Uncertainties connected to observations**

15 In general, the representativity of the measurements depends on how often it is measured –
16 i.e. the uncertainty decreases with increasing number of observations. Depending on the
17 issues addressed, there will be different requirements for geographical coverage, number of
18 stations, frequency and parameters measured (Figure C1 - Ottersen et al., 1998).

19 Actual programs on *in situ* monitoring of the biogeochemical environment are mainly carried
20 out by discrete sampling and subsequent analysis along with regularly monitoring cruises or
21 by stationary measuring systems like buoys. Monitoring cruises are restricted in spatial and
22 temporal coverage, hence limiting the availability of high quality observational data. In
23 addition the measurement methodologies are, especially for the biogeochemical parameters,
24 an issue in terms of uncertainty of the specific measurement (i.e. Proctor and Roesler, 2010).

25 Exemplary for the variety of biogeochemical measurements are the challenges connected to
26 the measurements of Chl *a* concentration, which are performed by analysing filtered water
27 samples with spectrophotometric or high-performance liquid chromatography (HPLC)
28 methodologies which are cost intensive. In order to lower the costs, a range of autonomous
29 sensors has been developed to overcome these limitations. These sensors measure the Chl *a*
30 fluorescence, which is used to provide an estimate of the Chl *a* concentration.

1 In addition, when comparing to model results there is an added uncertainty in what the
2 observations represent. One measurement may represent the value in a few litres of water,
3 while the model value represents the value in $\sim 10^9$ m³ of water, depending on the model
4 resolution. Here, the same dataset was used for evaluation of the effect of the tuning, as was
5 used to study the needs for tuning. To be fully validated, the model should be compared to
6 independent observed data (Stow et al., 2009). However, due to scarce availability of
7 observed data, it was decided to use all data for both activities.

8

9 4.2 Parameter changes

10 Most of the parameter changes were included to reduce the systematic overestimation of
11 phytoplankton biomass during summer. Some parameter alterations were conducted to study
12 the sensitivity of the model to the variety of ecosystem properties reported in the literature,
13 this included different Si:N ratios and the inclusion of diatoms in the diet of
14 microzooplankton. Several of the parameter alterations investigated had little impact on the
15 results of the model as seen in the error statistic. Quadratic, rather than linear, mortality in the
16 phytoplankton was one of the changes that had little effect on the error statistics, while a
17 change in the grazing rates had a large effect. The sensitivity of this model to the diet
18 compositions of zooplankton has also been shown in a more theoretical study on parameter
19 estimation by data assimilation by Simon et al. (2012). It is a factor that the change to the
20 grazing parameter was larger than the changes to the mortality parameters, However, the
21 changes in N04 cause the mesozooplankton to increase by about 60% and (the other alteration
22 of the mortality rate caused changes of the same order of magnitude) and this indicates that
23 rather large changes in the zooplankton concentrations are needed to perturb the nutrients and
24 phytoplankton concentrations. The zooplankton mortality is the closure term in the model, but
25 contrary to some earlier studies (e.g Steele and Henderson, 1992) perturbations of the
26 functional form of the mortality in N04 had little effect on the results. One possible
27 explanation for the low sensitivity is that the zooplankton mortality resulting from the
28 different functional forms is not very different over the range of common zooplankton
29 concentrations (Figure S4). A similar response of the model to the functional form of the
30 zooplankton mortality was found in another modelling study (Yool et al., 2011).

Annette Samuelsen 6/10/2015 4:19 PM

Deleted: other

Annette Samuelsen 6/10/2015 4:10 PM

Deleted: The reason for the lack of sensitivity of the nutrients and phytoplankton to changes in the mortality term is not clear

Annette Samuelsen 6/10/2015 4:08 PM

Deleted: .

1 Increasing the N:Chl ratio would on one hand decrease the amount of chlorophyll per
2 phytoplankton biomass, but also how quickly light is attenuated with depth. This alters the
3 vertical distribution of phytoplankton, but it changes the concentrations only by a few percent,
4 hence this effect is small compared to the effect on the chlorophyll concentration from
5 altering the N:Chl ratio. The change of N:Chl (which is proportional to the C:Chl ratio in this
6 model) with light availability is now well established (Geider, 1987) and implementing a
7 variable N:Chl ratio is one of the future developments planned for this model.

8 The changes in the uptake ratio of silicate to nitrate had a large influence on the progress of
9 both the diatom bloom and the flagellate bloom. Silicate is the limiting nutrient for diatoms,
10 and when lowering this ratio more nitrate can be consumed leaving less nitrate for the
11 flagellates and limiting the size of the bloom. Observed uptake ratios of Si:N vary widely and
12 probably also varies between species, regions and seasons. Ideally a flexible uptake ratio
13 could be included, for example as in the ERSEM model (i.e. Blackford et al., 2004), but
14 including variable stoichiometry also increases the number of variables that has to be
15 advected in the model and hence the computations cost considerably.

16 Because of computational limitations, only a small subset of the parameters was tested in this
17 tuning exercise, the parameters were picked based upon past experience with the model. As
18 grazing seems to be an important control mechanism in the model, the zooplankton
19 assimilation efficiency may be an important parameter to test in the future. The temperature
20 dependence of growth and respiration for both zooplankton and phytoplankton would
21 probably influence the progress of the blooms across regions, but past experience with the
22 model has shown that this model has little sensitivity to parameters related to phytoplankton
23 growth, hence these parameters have been mostly left unchanged in this study. Additionally
24 the sinking rates for detritus influence the amount of regenerated nutrients during summer.

25 **4.3 Regional differences in performance**

26 Evaluating the final run (TP1) compared to all observational data (Figs. 4 and 5) and to
27 observations in different regions (Figs, 7 and 8), it is clear that the model performed better
28 overall than on a region-by-region basis. The explanation for this may lie partly in the
29 placement of water masses in the model combined with the locations of the measurements. In
30 the Norwegian Sea the majority of measurements are taken at a single location (Station M).
31 For the model to perform well there, it needs to simulate the correct water masses at this exact

1 point. Station M is located close to a front between two water masses, and the model is not
2 always simulating the location of this front well (Figure S5). In the Barents Sea most of the
3 observations are collected in sections or over the whole area during early fall, therefore some
4 of the dependency on simulating the correct location of fronts falls away in this region. In
5 shallow areas, such as along the coast and in the Barents Sea, better representation of benthic
6 processes as well as the lack of tides are probably sources of errors.

7 The location of the ice edge affect the results of the biogeochemical model (Samuelsen et al.,
8 2009a). The observations used here are primarily from open-ocean regions, so we have
9 limited knowledge of the model performance close to the ice edge. The comparison of the
10 physical model simulation (free-run) to satellite observations shows that the ice-edge follows
11 the observed pattern (Sakov et al. 2012), but of course it is not 100% accurate. In the model
12 light does not propagate through ice, and the ice edges also influences mixing, therefore errors
13 are expected in both chlorophyll and nutrients if the model places the ice edge incorrectly.. In
14 addition, the fact that we don't include ice-algae in the model also introduces sources of
15 errors.

16 **5 Conclusions**

17 In total 18 sensitivity runs were performed on the higher- and coarser resolution model grid.
18 First, the effect of tuning of single parameters was studied. Subsequently, the tuning of
19 combinations of parameters were tested in the coarse model. The conclusion was that the best
20 overall results were obtained when a combination of grazing preference for
21 microzooplankton, Si:N ratio in diatoms and reduced growth rate for phytoplankton was used.
22 This combination of parameters was then changed in the higher-resolution model and the
23 differences in performance between the two sets of parameters were investigated in that
24 configuration.

25 The revised run shows a clear improvement compared to the original run, particularly for
26 nutrients but also for chlorophyll, but while the previous run tended to overestimate the
27 annual cycle of chlorophyll, the revised run tends to underestimate the amplitude (Fig. 6).
28 Based on these results, the revised parameter set presented here were also implemented as part
29 of an operational system for the Arctic. A major difference between the model runs presented
30 here and the operational system is that the operational system includes data assimilation in the
31 physical model (Sakov et al., 2012), which may alter the physical model and in turn alter the
32 performance of NORWECOM. A study of the impact of data assimilation on this model

1 (Samuelson et al., 2009a) showed that there were typically a difference of 5-10% for the
2 nutrients and chlorophyll between the free run and the run with assimilation, but with
3 difference up to 20% in the Arctic. Data assimilation can also be applied to the
4 biogeochemical model, both as a mean of improving the forecast fields and as a method for
5 optimizing model parameters (Simon et al., 2012).

6 ~~We have shown that the model reproduces a reasonable annual cycle, but the initiation time of~~
7 ~~the spring bloom is consistently later than the observations.~~ None of the parameter alterations
8 affecting the timing of the spring bloom by more than a few days, while the lag in bloom
9 initiation compared to observations is 20-30 days, This indicates that the error in timing is an
10 effect either of the physical model or a missing process, such as for example phyto-
11 convection (the early seeding of the spring bloom by phytoplankton that was mixed down
12 during winter: Backhaus et al., 1999, 2003). Another challenge is to show that the model also
13 produces realistic interannual variability. The model shows less variability than the observed
14 data, but this is also expected as the observations include a spatial and temporal variability
15 that cannot be resolved of a model of this resolution.

16 During the tuning process the parameter sensitivity of the module was explored and the
17 changes that were motivated by observation-based findings, for example that Si:N is highly
18 variable and that microzooplankton are grazing on diatoms, had a positive influence on the
19 model. This suggests that greater refinement of the models in general should be done in closer
20 collaboration with ecologist and field oceanographers.

21 **Code availability**

22 The full model code is available at
23 https://svn.nersc.no/hycom/browser/HYCOM_2.2.12/CodeOnly/src_2.2.12/. The code is
24 continually under development and version control is used when updating the code, so the
25 HYCOM-NORWECOM V2.0 used for in the reference run, which were performed in
26 October 2011 is revision number 186, while HYCOM-NORWECOM V2.1 corresponds
27 revision number 224.

28

29 **Acknowledgements**

Annette Samuelson 6/10/2015 4:23 PM

Deleted: We have shown that the model reproduces a reasonable annual cycle, but one persistent challenge the initiation time of the spring bloom is later than the observations

Annette Samuelson 6/10/2015 4:27 PM

Deleted: (

Annette Samuelson 6/10/2015 4:26 PM

Deleted: Backhaus et al., 1999)

1 This work was done with the support of the EU FP7 Project MyOcean2 (project number
2 283367) and the NFR funded SEASERA project SEAMAN (project number 227779/E40). A
3 grant for CPU time was given by the Norwegian Supercomputing Project (NOTUR2). We
4 also wish to thank the two anonymous reviewers and the topical editor for their constructive
5 comments.
6

References

- 1
2
3 Aagaard, K., Swift, J. H. and Carmack, E. C.: Thermohaline circulation in the Arctic
4 Mediterranean Seas, *J. Geophys. Res.*, 90, 4833, doi:10.1029/JC090iC03p04833, 1985.
- 5 Aksnes, D. L., Ulvestad, K. B., Balino, B. M., Berntsen, J., Egee, J. K. and Svendsen, E.:
6 Ecological modeling in coastal waters - towards predictive physical-chemical-biological
7 simulation-models, *Ophelia*, 41, 5–36, 1995.
- 8 Allen, J. I., Holt, J. T., Blackford, J. and Proctor, R.: Error quantification of a high-resolution
9 coupled hydrodynamic-ecosystem coastal-ocean model: Part 2. Chlorophyll-a, nutrients and
10 SPM, *J. Mar. Syst.*, 68(3-4), 381–404, 2007.
- 11 Backhaus, J. O., Hegseth, E. N., Wehde, H., Irigoien, X., Hatten, K. and Logemann, K.:
12 Convection and primary production in winter, *Mar. Ecol. Prog. Ser.*, 251, 1–14,
13 doi:10.3354/meps251001, 2003.
- 14 Backhaus, J. O., Wehde, H., Hegseth, E. N., Kampf, J. and Wehdel, H.: “Phyto-convection”:
15 the role of oceanic convection in primary production, *Mar. Ecol. Ser.*, 189, 77–92, 1999.
- 16 Blackford, J. C., Allen, J. I. and Gilbert, F. J.: Ecosystem dynamics at six contrasting sites: a
17 generic modelling study, *J. Mar. Syst.*, 52(1–4), 191–215, doi:10.1016/j.jmarsys.2004.02.004,
18 2004.
- 19 Bleck, R.: An oceanic general circulation model framed in hybrid isopycnic-Cartesian
20 coordinates, *Ocean Model.*, 4(1), 55–88, 2002.
- 21 Carnes, M. R.: Description and Evaluation of GDEM-V 3.0, 2009.
- 22 Conkright, M. E., Locarnini, R. a, Garcia, H. E., O’Brien, T. D., Boyer, T. P., Stepens, C. and
23 Antonov, J. I.: World Ocean Atlas 2001: Objective analyses, data statistics, and figures CD-
24 ROM documentation, *Natl. Oceanogr. Data Cent. Intern. Rep. (NOAA Atlas NESDIS)*,
25 17(September), 17, 2002.
- 26 Dee, D. P., Uppala, S. M., Simmons, A. J., Berrisford, P., Poli, P., Kobayashi, S., Andrae, U.,
27 Balmaseda, M. A., Balsamo, G., Bauer, P., Bechtold, P., Beljaars, A. C. M., Van De Berg, L.,
28 Bidlot, J., Bormann, N., Delsol, C., Dragani, R., Fuentes, M., Geer, A. J., Haimberger, L.,
29 Healy, S. B., Hersbach, H., Hólm, E. V., Isaksen, L., Kållberg, P., Köhler, M., Matricardi, M.,
30 McNally, A. P., Monge-Sanz, B. M., Morcrette, J. J., Park, B. K., Peubey, C., de Rosnay, P.,
31 Tavolato, C., Thépaut, J. N. and Vitart, F.: The ERA-Interim reanalysis: configuration and
32 performance of the data assimilation system, *Q. J. R. Meteorol. Soc.*, 137(656), 553–597,
33 doi:10.1002/qj.828, 2011.
- 34 Edwards, K. P., Barciela, R. and Butenschön, M.: Validation of the NEMO-ERSEM
35 operational ecosystem model for the North West European continental shelf, *Ocean Sci.*, 8(2),
36 983–1000, doi:10.5194/os-8-983-2012, 2012.
- 37 Eppley, B. L.: Temperature and phytoplankton growth in the sea, *Fish. Bull.*, 70, 1063–1085,
38 1972.
- 39 Fouilland, E., Gosselin, M., Rivkin, R. B., Vasseur, C. and Mostajir, B.: Nitrogen uptake by
40 heterotrophic bacteria and phytoplankton in Arctic surface waters, *J. Plankton Res.*, 29(4),
41 369–376, doi:10.1093/plankt/fbm022, 2007.
- 42 Geider, R. J.: Light and Temperature Dependence of the Carbon to Chlorophyll a Ratio in
43 Microalgae and Cyanobacteria : Implications for Physiology and Growth of Phytoplankton ,
44 106(1), 1–34, 1987.
- 45 Hansen, C.: Simulated primary production in the Norwegian Sea - Interannual variability and
46 impact of mesoscale activity, *Univeristy of Bergen.*, 2008.
- 47 Hansen, C., Kvaleberg, E. and Samuelsen, a.: Anticyclonic eddies in the Norwegian Sea; their
48 generation, evolution and impact on primary production, *Deep Sea Res. Part I Oceanogr. Res.*
49 *Pap.*, 57(9), 1079–1091, doi:10.1016/j.dsr.2010.05.013, 2010.

1 Hansen, C. and Samuelsen, a.: Influence of horizontal model grid resolution on the simulated
2 primary production in an embedded primary production model in the Norwegian Sea, *J. Mar.*
3 *Syst.*, 75(1-2), 236–244, doi:10.1016/j.jmarsys.2008.10.004, 2009.

4 Ottersen, G., Aasen, S. and Aure, J.: Utarbeidelse av et program for overvåkning av et
5 eutrofitilstand og –utvikling i norske kystfarvann basert på både tradisjonelle og
6 høyteknologiske metoder, *Fisk. og Havet*, (1), 144, 1998.

7 Pätsch, J. and Kühn, W.: Nitrogen and carbon cycling in the North Sea and exchange with the
8 North Atlantic - a model study, Part I. Nitrogen budget and fluxes, *Cont. Shelf Res.*, 28(6),
9 767–787, 2008.

10 Pätsch, J., Kühn, W., Moll, A. and Lenhart, H.: ECOHAM4 User Guide - Ecosystem Model,
11 Hamburg, Version 4. Technical Reports 01-2009, Institut für Meereskunde, Hamburg,
12 Germany., 2009.

13 Poulain, P.-M., Warn-Varnas, a. and Niiler, P. P.: Near-surface circulation of the Nordic seas
14 as measured by Lagrangian drifters, *J. Geophys. Res.*, 101, 18237, doi:10.1029/96JC00506,
15 1996.

16 Proctor, C. W. and Roesler, C. S.: New insights on obtaining phytoplankton concentration and
17 composition from in situ multispectral Chlorophyll fluorescence, *Limnol. Oceanogr.*
18 *Methods*, 8(Dickey 1991), 695–708, doi:10.4319/lom.2010.8.695, 2010.

19 Sakov, P., Counillon, F., Bertino, L., Lisæter, K. A., Oke, P. R. and Korabely, A.: TOPAZ4:
20 an ocean-sea ice data assimilation system for the North Atlantic and Arctic, *Ocean Sci.*, 8(4),
21 633–656, doi:10.5194/os-8-633-2012, 2012.

22 Samuelsen, A. and Bertino, L.: Arctic Ocean ecosystem modeling in MyOcean, *Mercat.*
23 *Ocean Q. Newsl.*, 40, 36–44, 2011.

24 Samuelsen, A., Bertino, L. and Hansen, C.: Impact of data assimilation of physical variables
25 on the spring bloom from TOPAZ operational runs in the North Atlantic, *Ocean Sci.*, 5(4),
26 635–647, 2009a.

27 Samuelsen, A., Huse, G. and Hansen, C.: Shelf recruitment of *Calanus finmarchicus* off the
28 west coast of Norway: role of physical processes and timing of diapause termination, *Mar.*
29 *Ecol. Prog. Ser.*, 386, 163–180, doi:10.3354/meps08060, 2009b.

30 Sarthou, G., Timmermans, K. R., Blain, S., Tréguer, P. and Treguer, P.: Growth physiology
31 and fate of diatoms in the ocean: a review, *J. Sea Res.*, 53(1-2), 25–42, doi:Doi
32 10.1016/J.Seares.2004.01.007, 2005.

33 Seitzinger, S. P., Harrison, J. A., Dumont, E., Beusen, A. H. W. and Bouwman, A. F.: Sources
34 and delivery of carbon, nitrogen, and phosphorus to the coastal zone: An overview of Global
35 Nutrient Export from Watersheds (NEWS) models and their application, *Glob. Biogeochem.*
36 *Cycles*, 19(4), GB4S01, doi:10.1029/2005gb002606, 2005.

37 Simon, E., Samuelsen, A., Bertino, L. and Dumont, D.: Estimation of positive sum-to-one
38 constrained zooplankton grazing preferences with the DEnKF: A twin experiment, *Ocean*
39 *Sci.*, 8(2), 587–602, doi:10.5194/os-8-587-2012, 2012.

40 Skogen, M. and Søiland, H.: A user's guide to NORWECOM v2.0. The NORWegian
41 ECOlogical Model system., Institute of Marine Research, Bergen., 1998.

42 Steele, J. H. and Henderson, E. W.: The role of predation in plankton models, *J. Plankt. Res.*,
43 14(1), 157–172, 1992.

44 Stegert, C., Moll, A. and Kreuz, M.: Validation of the three-dimensional ECOHAM model in
45 the German Bight for 2004 including population dynamics of *Pseudocalanus elongatus*, *J. Sea*
46 *Res.*, 62(1), 1–15, doi:Doi 10.1016/J.Seares.2008.10.011, 2009.

47 Stow, C. A., Jolliff, J., McGillicuddy Jr, D. J., Doney, S. C., Allen, J. I., Friedrichs, M. A. M.,
48 Rose, K. A. and Wallhead, P.: Skill assessment for coupled biological/physical models of
49 marine systems, *J. Mar. Syst.*, 76(1-2), 4–15, 2009.

1 Takahashi, T., Sutherland, S. C., Wanninkhof, R., Sweeney, C., Feely, R. a., Chipman, D. W.,
2 Hales, B., Friederich, G., Chavez, F., Sabine, C., Watson, A., Bakker, D. C. E., Schuster, U.,
3 Metzl, N., Yoshikawa-Inoue, H., Ishii, M., Midorikawa, T., Nojiri, Y., Körtzinger, A.,
4 Steinhoff, T., Hoppema, M., Olafsson, J., Arnarson, T. S., Tilbrook, B., Johannessen, T.,
5 Olsen, A., Bellerby, R., Wong, C. S., Delille, B., Bates, N. R. and de Baar, H. J. W.:
6 Climatological mean and decadal change in surface ocean pCO₂, and net sea-air CO₂ flux
7 over the global oceans, *Deep Sea Res. Part II Top. Stud. Oceanogr.*, 56(8-10), 554–577,
8 doi:10.1016/j.dsr2.2008.12.009, 2009.
9 Taylor, K. K. E.: Summarizing multiple aspects of model performance in a single diagram, *J.*
10 *Geophys. Res.*, 106(D7), 7183–7192, doi:10.1029/2000jd900719, 2001.
11 Le Traon, P. Y.: From satellite altimetry to Argo and operational oceanography: Three
12 revolutions in oceanography, *Ocean Sci.*, 9, 901–915, doi:10.5194/os-9-901-2013, 2013.
13 Uppala, S. M., Kallberg, P. W., Simmons, A. J., Andrae, U., Bechtold, V. D., Fiorino, M.,
14 Gibson, J. K., Haseler, J., Hernandez, A., Kelly, G. A., Li, X., Onogi, K., Saarinen, S., Sokka,
15 N., Allan, R. P., Andersson, E., Arpe, K., Balmaseda, M. A., Beljaars, A. C. M., Van De
16 Berg, L., Bidlot, J., Bormann, N., Caires, S., Chevallier, F., Dethof, A., Dragosavac, M.,
17 Fisher, M., Fuentes, M., Hagemann, S., Holm, E., Hoskins, B. J., Isaksen, I., Janssen, P.,
18 Jenne, R., McNally, A. P., Mahfouf, J. F., Morcrette, J. J., Rayner, N. A., Saunders, R. W.,
19 Simon, P., Sterl, A., Trenberth, K. E., Untch, A., Vasiljevic, D., Viterbo, P. and Woollen, J.:
20 The ERA-40 re-analysis, *Q. J. R. Meteorol. Soc.*, 131(612), 2961–3012, 2005.
21 Wan, Z., She, J., Maar, M., Jonasson, L. and Baasch-Larsen, J.: Assessment of a physical-
22 biogeochemical coupled model system for operational service in the Baltic Sea, *Ocean Sci.*,
23 8(4), 683–701, doi:10.5194/os-8-683-2012, 2012.
24 Yentsch, C. and Vaccaro, R.: Phytoplankton nitrogen in the oceans, *Limnol. Ocean.*, 3, 443–
25 448, doi:doi:10.4319/lo.1958.3.4.0443, 1958.
26 Yool, a., Popova, E. E. and Anderson, T. R.: MEDUSA-1.0: A new intermediate complexity
27 plankton ecosystem model for the global domain, *Geosci. Model Dev.*, 4(2), 381–417,
28 doi:10.5194/gmd-4-381-2011, 2011.
29
30

31

1 Table 1. Model versions and references.

HYCOM	NORWECOM	HYCOM-NORWECOM	References
V2.2.12	V2.0	V1.0	Description:(Skogen and Søiland, 1998); Examples of application: (Hansen and Samuelsen, 2009; Hansen et al., 2010)
V2.2.12	V2.0+zooplankton	V2.0	Application: Samuelsen and Bertino, 2011
V2.2.12	V2.0+zooplankton+ parameter tuning	V2.1	This paper

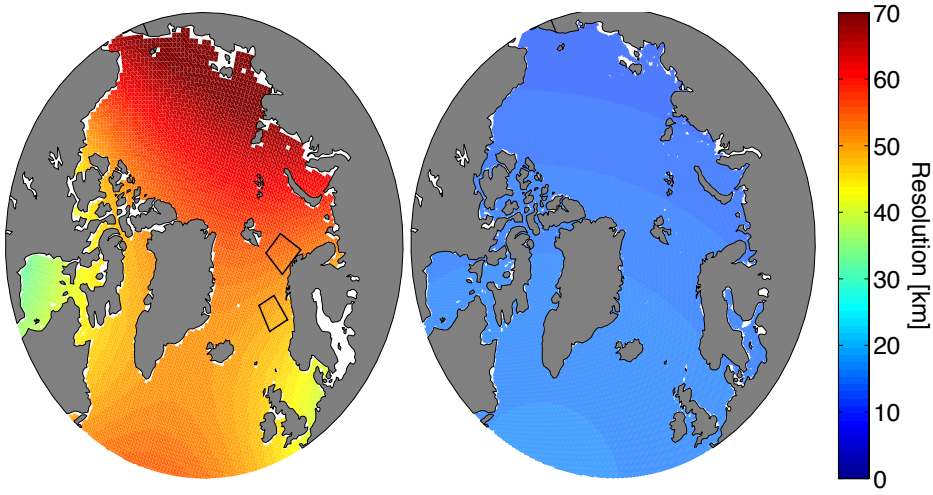
2
3
4
5
6
7
8
9
10
11
12
13
14
15

1 Table 2. Overview of runs performed with the associated parameter values.

	Parameter for tuning	Original value	New value
N00	Reference run		
	Reference run with TPO high resolution		
N01	Quadratic mortality for phytoplankton	cc(3), cc(3)=4.0e-7	cc(3)/15.0+cc(3)*P/15.0
N02	Si:N-ratio in diatoms	1.75 mgSi/mgN=0.875 mmolSi/mmolN	0.575mmolSi/mmolN=1.15 mgSi/mgN
N03	Si:N-ratio in diatoms	1.75 mgSi/mgN=0.875 mmolSi/mmolN	1.175mmolSi/mmolN=2.35 mgSi/mgN
N04	Quadratic mortality in zooplankton	$m_z * (z / (z + c_{nit} * k_6))$, $m_z=0.2$, z =zooplankton-conc [mgN/m ³], $c_{nit}=14.01$ mgN/mmolN, $k_6=0.2$	$m_z / 5.0 + m_z * z / 25.0$
N05	Mesozooplankton mortality (+25%)	$m_{z-meso}=0.2$	$m_{z-meso}=0.25$
N06	Mesozooplankton mortality (-25%)	$m_{z-meso}=0.2$	$m_{z-meso}=0.15$
N07	Combination of N01 and N02	cc(3), cc(3)=4.0e-7, 1.75 mgSi/mgN	cc(3)/15.0+cc(3)*P/15.0, 1.15 mgSi/mgN
N08	N:Chl-ratio		11 13.75
N09	N:Chl-ratio		11 12.5
N10	N:Chl-ratio		11 6.3
N11	Grazing preferences for microzooplankton	pi21=0.633-flagellates, pi24=0.367-detritus	pi21=0.333-flagellates, pi23=0.333-diatoms, pi24=0.333-detritus

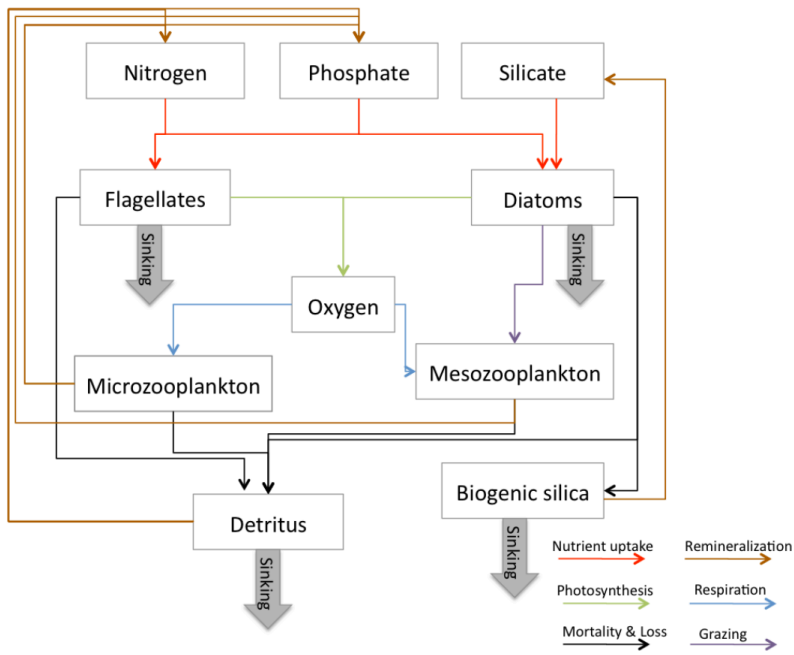
N12	Maximum microzooplankton grazing rate	g=0.5	g=1.0
N13	Combination of N11 and N1	pi21=0.633-flagellates, pi24=0.367-detritus cc(3), cc(3)=4.0e-7	pi21=0.334-flagellates, pi23=0.333-diatoms, pi24=0.333-detritus, cc(3)/15.0+cc(3)*P/15.0
N14	Combination of N11 and N2	pi21=0.633-flagellates, pi24=0.367-detritus, 1.75 mgSi/mgN	pi21=0.334-flagellates, pi23=0.333-diatomes, pi24=0.333-detritus, 1.15 mgSi/mgN
N15	Combination of N14 and N12	pi21=0.633-flagellates, pi24=0.367-detritus, 1.75 mgSi/mgN, g(micro)=0.5	pi21=0.334-flagellates, pi23=0.333-diatoms, pi24=0.333-detritus, 1.15 mgSi/mgN, g(micro)=1.0
N16	Combination of N14 and reduced growth rate for phytoplankton	pi21=0.633-flagellates, pi24=0.367-detritus, 1.75 mgSi/mgN, Vmax(dia)=1.53E-5, Vmax(fla)=1.02E-5	pi21=0.334-flagellates, pi23=0.333-diatoms, pi24=0.333-detritus, 1.15 mgSi/mgN, Vmax(dia)=1.15E-5, Vmax(fla)=0.76E-5
TP1	High-resolution run with the parameter values of N16	pi21=0.633-flagellates, pi24=0.367-detritus, 1.75 mgSi/mgN, Vmax(dia)=1.53E-5, Vmax(fla)=1.02E-5	pi21=0.334-flagellates, pi21=0.333-diatoms, pi24=0.333-detritus, 1.15 mgSi/mgN, Vmax(dia)=1.15E-5, Vmax(fla)=0.76E-5

1
2



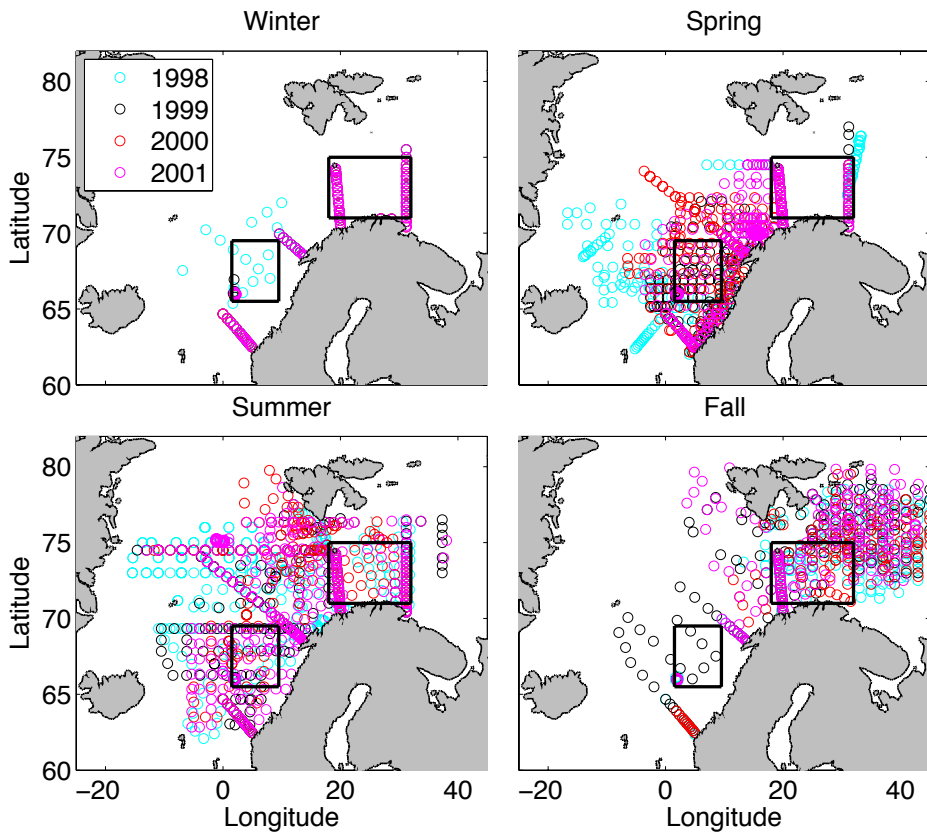
1
2
3
4
5
6

Figure 1. Resolution of the two model grids used in this study. The two areas indicated by black lines in the map to the left are the areas referred to as Norwegian Sea – southern area - and Barents Sea – northern area.



1
2
3
4
5
6

Figure 2. Flow chart of the interaction between the individual model components in NORWECOM.



1
2

3 Figure 3. Spatial in-situ data coverage for nitrate in different years and seasons for the dataset
 4 used. The coverage for the other variables is similar. The southern areas are mostly sampled
 5 in spring and summer, while the Arctic regions are more sampled in summer and fall. There
 6 are very few open-ocean measurements during winter, but in the sections visible in the
 7 winter-panel (upper, left) there are observations for all years and seasons.

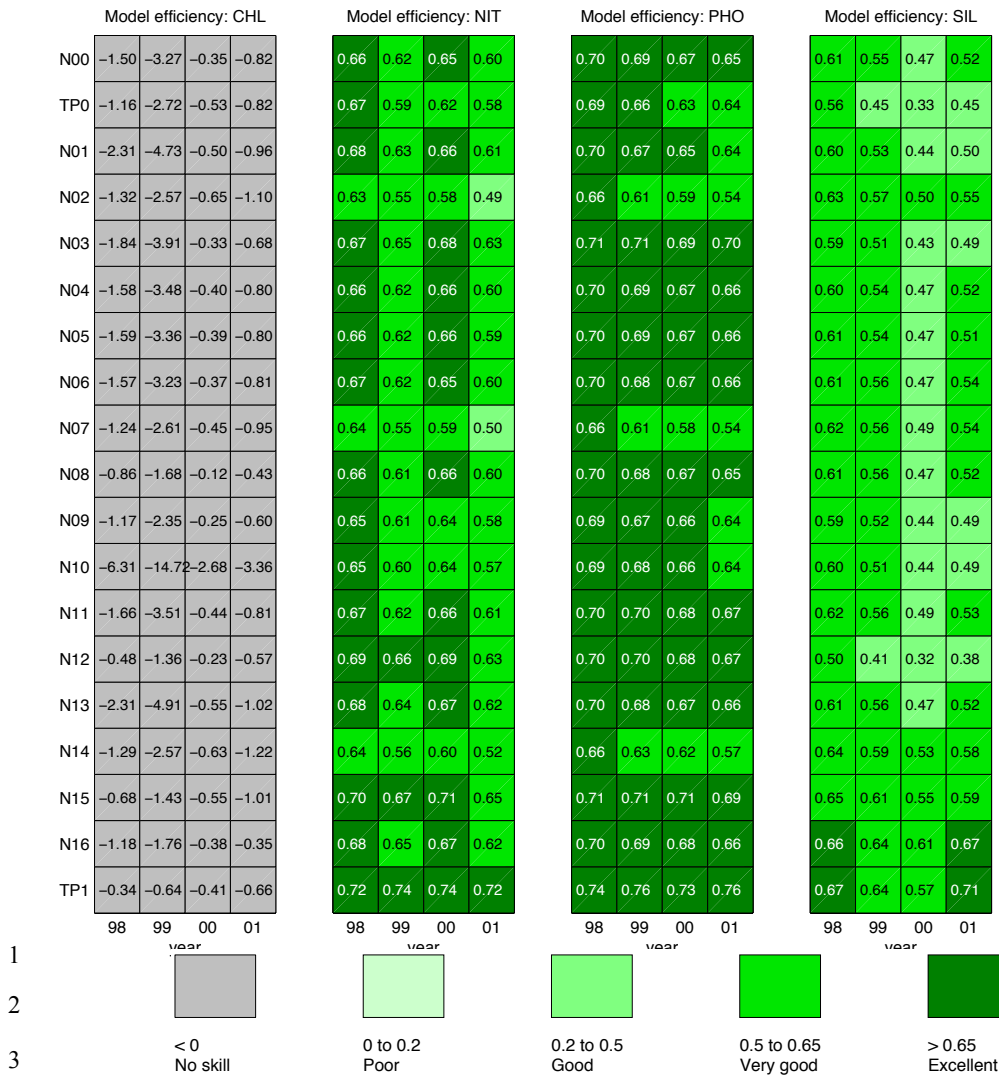


Figure 4. Model efficiency (ME, see text) for the model simulations compared to all available observations from the period 1998-2001.

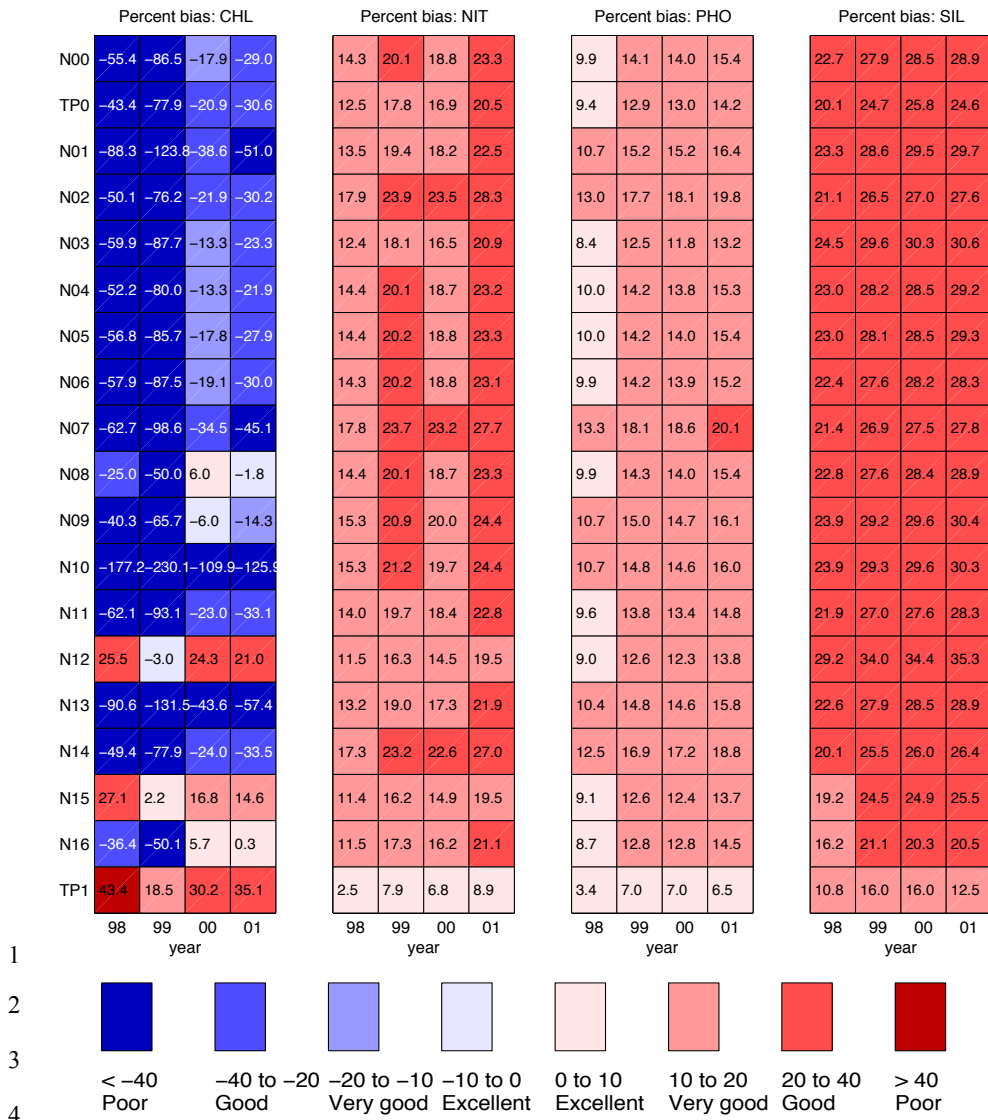
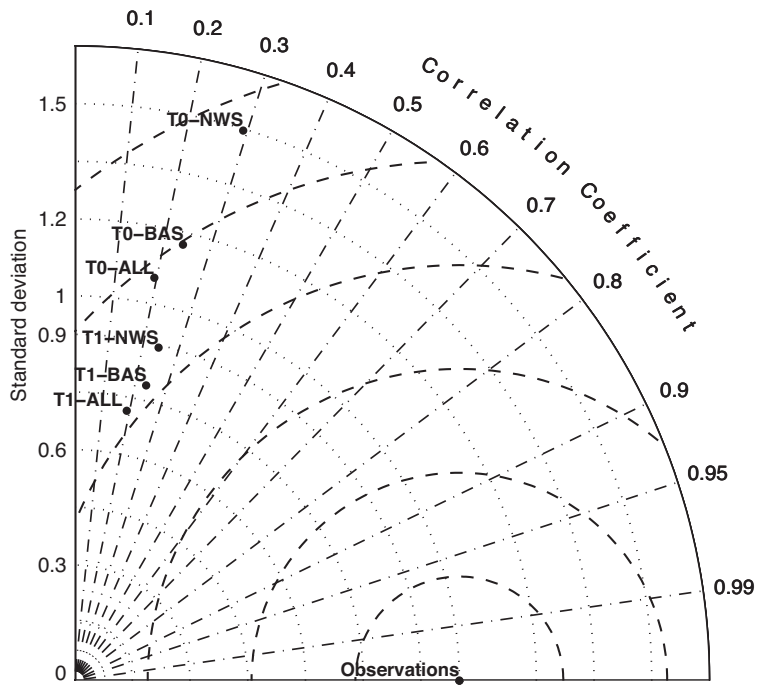


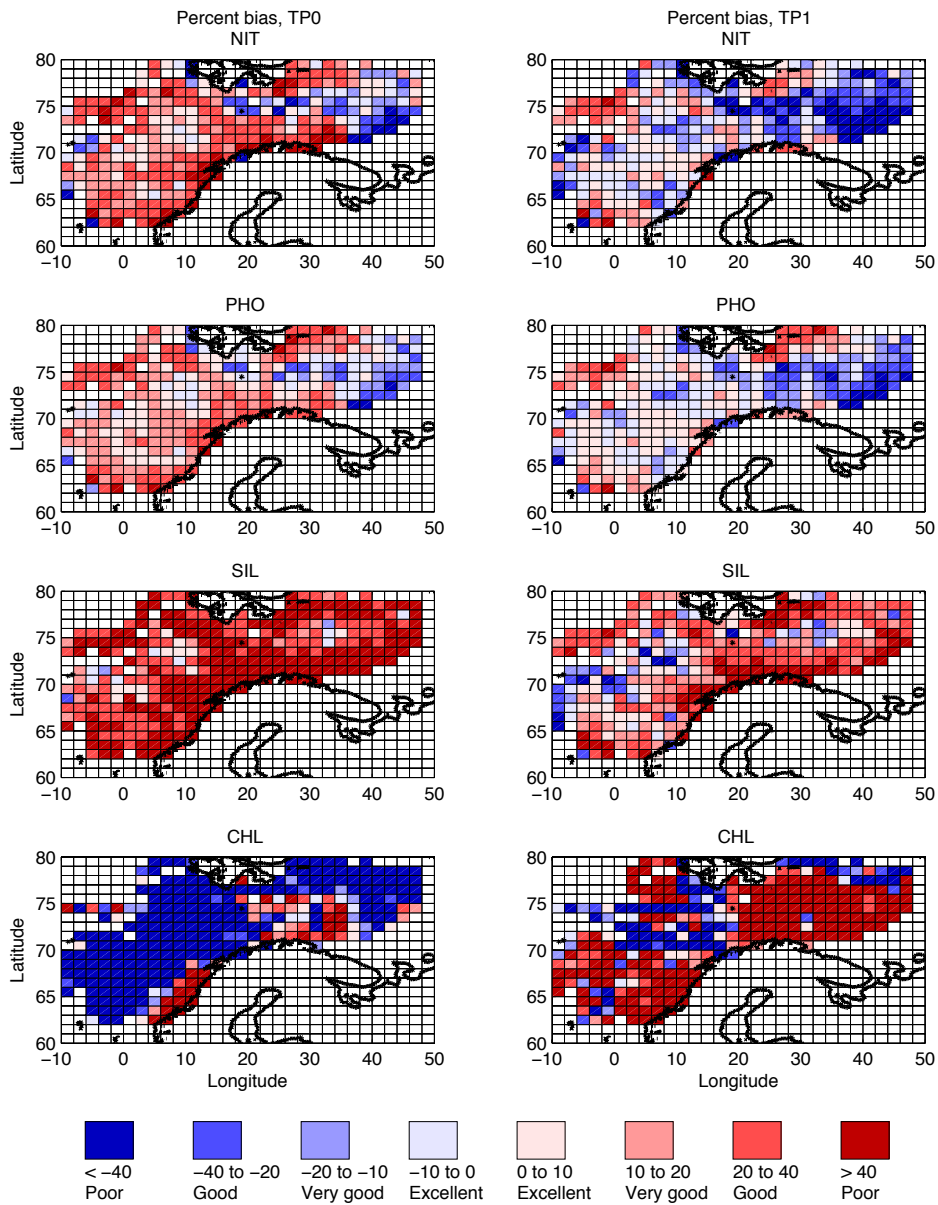
Figure 5. Percentage bias (Pbias, see text) for the model model simulations compared to all available observations from the period 1998-2001.



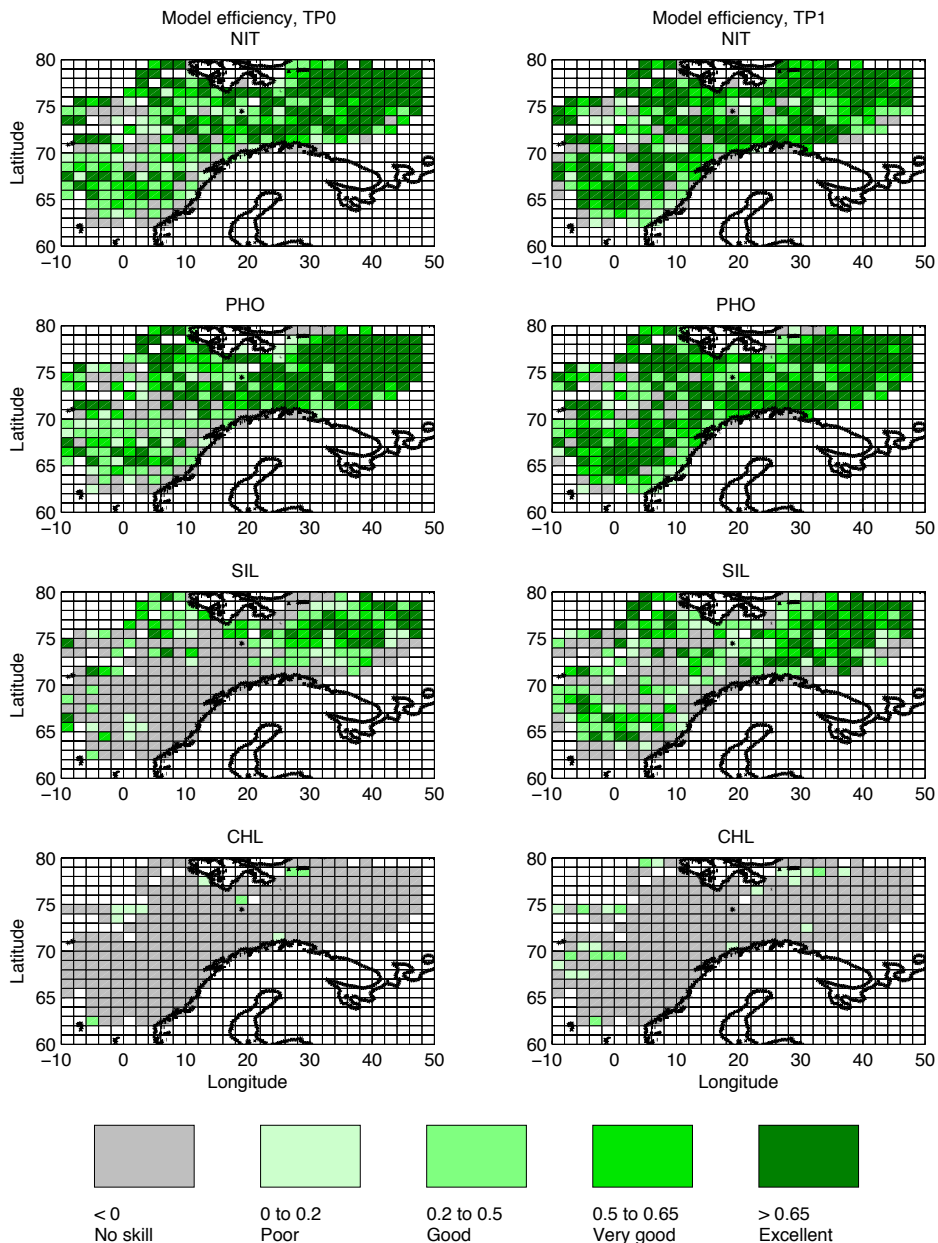
1

2

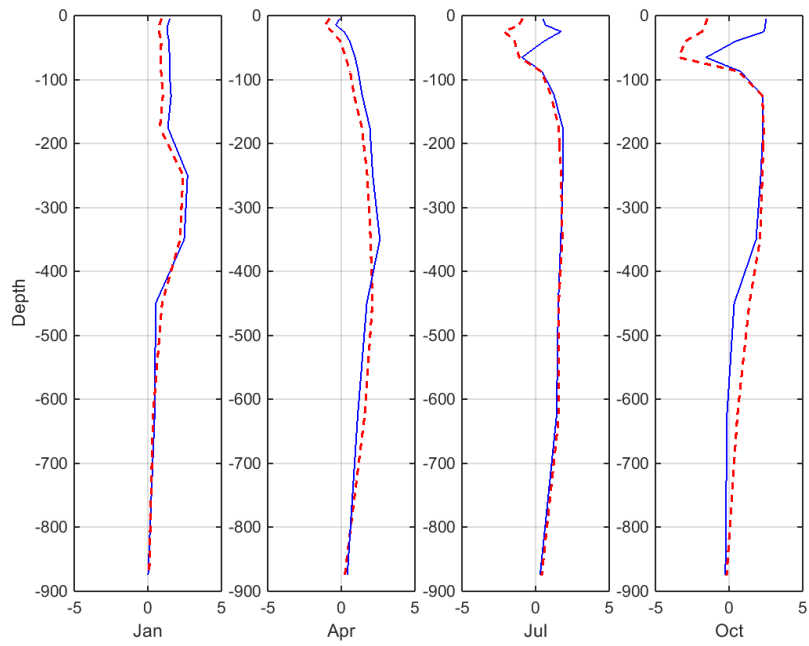
3 Figure 6. Taylor-diagram for comparison with in-situ chlorophyll for the entire area (ALL),
 4 the Barents Sea (BAS) and the Norwegian Sea including station M (NWS). The curved
 5 dotted lines show the standard deviation relative to the observations.



1
 2 Figure 7. Percentage bias (Pbias, see text) in the upper 100 meters for the model simulations
 3 compared to all available observations from the period 1998-2001 in 2x1 degree boxes from
 4 the simulations with the fine-scale model with the original (TP0) and final set of parameters
 5 (TP1).

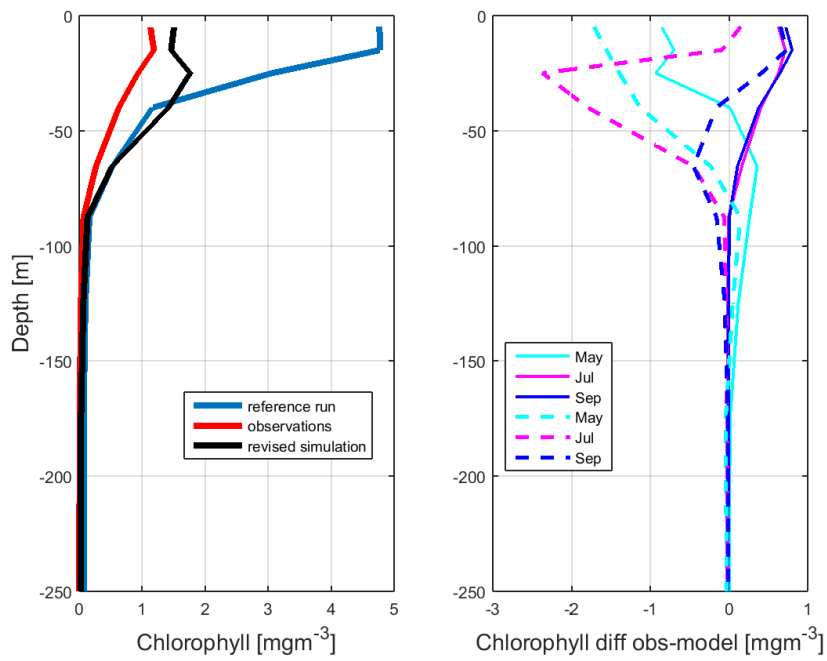


1
 2 Figure 8. Model efficiency (ME, see text) in the upper 100 meters for the model simulations
 3 compared to all available observations from the period 1998-2001 in 2x1 degree boxes from
 4 the simulations with the fine-scale model with the original (TP0) and final set of parameters
 5 (TP1).



1

2 Figure 9. Profiles of difference between nitrate [mmol N/m³] model and observations in
 3 different months in the Norwegian Sea box – solid lines (blue) are the revised simulation and
 4 dashed lines (red) the control run. All observations in the Norwegian Sea box between 1998
 5 and 2001 have been used.



1

2 Figure 10. Chlorophyll profiles from the control and reference run using the higher resolution
 3 model in June (a) in the Norwegian Sea box as well the difference between observations and
 4 model in other months (b) – solid lines are the revised simulation and dashed lines the control
 5 run. All observations in the Norwegian Sea box between 1998 and 2001 have been used.

6

7

8

9

10

11

12

13

14

Annette Samuelsen 6/10/2015 4:30 PM
 Deleted: the

1

2 **Appendix**

3 Table A1. Location of changes in the model code, all files are located in

4 https://svn.nersc.no/hycom/browser/HYCOM_2.2.12/CodeOnly/src_2.2.12/nersc/NORWEC

5 OM/

	Parameter for tuning	Relevant files	Remarks
N01	Quadratic mortality for phytoplankton	m_NOR05_detritus.F: line 77-89 mod_necessary_ecovars.F90: line 45-54	ZOOPL is 'defined' in all runs in this paper
N02/NO3	Si:N-ratio in diatoms	mod_necessary_ecovars.F90: line 45-54	
N04/NO5/NO6	Meso zooplankton mortality	m_NOR05_zoo_growth.F: line 53	For quadratic mortality, the mortality was set inside the loop calculating mesozooplankton (this code was never submitted to the subversion control system).
N07	Combination of N01 and N02	See above for N01 and N02	
N08/N09/N10	N:Chl-ratio	biocom.h: line 107-108	
N11	Grazing preferences for microzooplanton	m_NOR05_zoo_growth.F: line 26, 100-132	
N12	Grazing preferences for	m_NOR05_zoo_growth.F: line 26, 101	

	microzooplankton		
N13	Combination of N11 and N01	See above for N11 and N01	
N14	Combination of N11 and N2	See above for N11 and N02	
N15	Combination of N14 and N12	See above for N14 and N12	
N16	Combination of N14 and reduced growth rate for phytoplankton	See above for N14 and m_NOR05_affin.F: line 64 and 66	

1
2