

“Thermo-hydro-mechanical processes in fractured rock formations during glacial advance”

A.P.S. Selvadurai, A.P. Suvorov and P.A. Selvadurai

Anonymous Referee # 1.

Referee's Comment 1.1

This excellent manuscript illustrates the thermo-hydro-mechanical as well as hydro-mechanical processes emerging through glacial advances. It thus investigates important scenarios in view of nuclear waste management, i.e. storage in the subsurface, which is a highly-debated problem in countries that were affected by glaciation at least once in 20,000 years. The paper though does not consider the overall glaciation process and consequently its large-scale effects known as glacial isostatic adjustment (GIA), but it presents assuming linear problem temporal and spatial changes of several parameters induced by further advance of an already existing ice sheet.

1

Authors' Reply 1.1

The reviewers' comments on the manuscript are appreciated. The issue of glacial effects on a repository is being investigated by almost all the countries that are developing deep geologic disposal concepts for long-lived radioactive waste. The influence of glacial loading is important as are the effects of glacial isostatic adjustment. Topics such as isostatic rebound over temporal scales associated with GIA also need to be considered in a comprehensive analysis of the problem for secular time-scales. A comment to this effect and additional references have been included in the revised version of the paper.

Referee's Comment 1.2

The manuscript is well written and the reader is guided through the sections. Figures are appropriate and visualize the results nicely. I liked reading this paper and I am willing to recommend its eventual publication subject to minor revision dealing with the few comments to follow. I hope these comments will further enhance the already excellent quality of the manuscript, provide a bit more information to the reader and perhaps broaden the readership as well.

Authors' Reply 1.2

The reviewer's suggestions are gratefully acknowledged and implemented in the revised manuscript...

Referee's Comment 1.3

Introduction: Although this is very thorough introduction citing a lot of previous work, I personally see it a bit too long. Especially page 7355 and lines 1-24 of page 7356 could be moved to later sections describing the model set-up and dedicated equations. Also, it was unclear to me until page 7360, lines 14-16, that you only model a small glacier advance (thus there is already a glacial load on the model). Please highlight that in the introduction.

Authors' Reply 1.3

To shorten the introduction, lines 1–30 from page 7355 and lines 1–4 from page 7356 were moved to Section 2.2. Lines 5–15 from page 7356 were moved to Section 5.2. The fact that only a small glacier advance is considered is now mentioned in the introduction: “In this work attention is restricted to a glacier of very large length, which is initially at rest and then starts to move along the bedrock surface. The glacier motion or advance is assumed to be very small compared to the glacier length. Since the glacier loading is highly non-uniform near the glacier front and very flat near its center, the major change in the response of the underlying bedrock caused by a small glacier advance is expected to occur near the initial location of the glacier front. Therefore, we place the rock mass model domain containing fractures near the glacier front initial position...”

Referee's Comment 1.4

Section 2: Please state if the final equations are solved by COMSOL, exactly that way or if you had to modify the software. The same on page 7368, lines 1-3.

Authors' Reply 1.4

It is now explained at the end of Section 2.1 that the final equations are solved with two (for HM problem) or three (for THM problem) Modules of the COMSOL program. As the governing equations are coupled, these Modules also need to be connected by the user and solved simultaneously:

“The coupled THM problem described by the governing equations (5) to (7) is solved with the COMSOL finite element program. The equilibrium equations (5) are solved using the Structural Mechanics Module of the program; the fluid flow equation (6) is solved using the Earth Science Module (Darcy’s Law); and the heat conduction equation (7) is solved using the Heat Transfer Module. By default, these Modules are uncoupled, but the user can connect them by adding additional terms to the appropriate equations of each Module as suggested by equations (5) – (6).”

Referee’s Comment 1.5

Section 3: is the fracture network random? Does it represent a typical example? If so, for what? Please quantify the “most” on page 7361. Fractures as stated here have mostly “most” characteristics, so they appear to be all the same!?!

Authors’ Reply 1.5

The dominant fracture network used in this work represents only large-scale faults and closely resembles the simplified version of the real fracture network found in a small (approx. 10x10 km) sub-region of the Canadian Shield described in the NWMO report by Chan and Stanchell (2008).

3

In the given fracture network 14 fractures are subvertical with a high dip angle (close to 90^0), and 7 fractures are subhorizontal with a low dip angle (close to 0^0). Of the 14 subvertical fractures, 13 fractures span the entire thickness of the rock model. Fractures that do not span the entire thickness of the rock (e.g., subhorizontal) originate at the upper surface of the rock. The subhorizontal fractures are numbered from 1 to 7 on Figure 10.

Referee’s Comment 1.6

Section 3.3: Please provide references for the chosen values! Are they realistic? The ice sheet appears to represent the last glaciation of North America, but I find a glacier advance in 5900 years very slow.

Authors’ Reply 1.6

The specific form of the ice sheet thickness is adopted from the paper by Paterson (1972). The profile of the ice sheet, shown in Figure 3, is also similar to that shown in Figure 6 of the paper by Boulton and Caban (1995), in which, at a distance of 4000 m from the ice sheet front, the glacier thickness becomes equal to 300 m.

The chosen glacier velocity (1.27 m/year) is indeed very small. This value of glacier velocity is about 100 times smaller than the one used by Chan et al. (2005) and about 10 times smaller than the velocity calculated by Aschwanden and Blatter (2009). Such a small glacier velocity is chosen to avoid problems with a loss of accuracy of the solution which arises when the glacier velocity becomes higher and the mesh is not sufficiently fine (see Section 4.1).

Referee's Comment 1.7

Section 3.4: What is “a reasonable time frame” in hours/days?

Authors' Reply 1.7

Clarification indicated. (Approximately 3 hours of runtime when solving HM problem and 8 hours for THM problem).

Referee's Comment 1.8

4 Section 3.5: Please provide references for these values!

Authors' Reply 1.8

These material properties for the rock mass and fracture zones are similar to those used by Chan and Stanchell (2008) for modeling the Canadian Shield sub-region.

Referee's Comment 1.9

Figures 4 and 5: I suggest another figure to each figure showing the behavior of the quantity along a profile in the model in a certain depth (or at the surface), so that the reader can see the overlap/difference better.

Authors' Reply 1.9

Additional figures showing the behavior of the quantity along a profile in the model at a certain depth were added (see new Figs. 7, 9, 11, 13, 15, 17, 19).

Referee's Comment 1.10

Section 5.1: Page 7369, lines 22-24; Please provide reference! Page 7370, last sentence: I suppose with “stress state resulting from glacial loading” you refer to the stress obtained for the advance. However, for a full analysis, it should be combined not only with geostatic stress, but also with the GIA stress (see Steffen et al. 2014) and possible tectonic background stresses.

Authors’ Reply 1.10

The statement about fluid velocity values that are within the Darcy regime was removed from Section 5.1.

It is mentioned that, for a failure analysis, the stress resulting from glacial loading should be combined with geostatic stress, GIA stress and possible tectonic background stresses:

“It should be noted that for any failure analysis the HM stress state resulting from glacial loading should be combined with the in-situ geostatic stress, GIA stress (Steffen et al., 2014) and possible tectonic background stresses.”

Referee’s Comment 1.11

Section 5.2: 1 047 000 years is a very long time. Please put this in a realistic context. Or is your study basically a preliminary numerical study?

5

Authors’ Reply 1.11

Yes, 1 047 000 years is a very long time. Since this study attention is restricted only to a small glacier advance, this time can never be reached during computational simulations, i.e., the glacier motion is supposed to terminate a long time before this time is reached.

Referee’s Comment 1.12

Section 6: The two paragraphs on page 7373 should be discussed in view of former results and other works, or further highlights what is new from this study. Page 7374, line 10 ff: also the activation of faults is worth studying, e.g. in a combined analysis with large scale models of GIA.

Authors’ Reply 1.12

What is new in the present study is now highlighted in Section 6 (in the Conclusion). Comparison with the former results is also given:

“This study is closely related to the work performed earlier by Chan et al. (2005) and Chan and Stanchell (2005, 2008) in that it also examines the effect of the glacial loading on the behaviour

of fractured bedrock. In their work the rock was modelled as a thermo-poroelastic medium and contained 3D (but narrow) fracture regions, which were also assumed to be thermo-poroelastic. The novelty of the present model is the use of a quite complicated fracture network consisting of 21 fractures whereas only 5 fractures were included into the models described in the papers by Chan et al. (2005) and Chan and Stanchell (2005). The NWMO report by Chan and Stanchell (2008) deals with a more complex fracture network consisting of 19 fractures but the fracture thickness was set to 20 m, whereas in the present work it is 10 m, which implies greater geometry and mesh complexity. In addition, in the present study the focus is on the transient response caused by highly non-uniform and moving glacial loading acting on the surface of the bedrock. This loading is directly linked to the specified glacier velocity and profile. Another novelty of this work is the investigation of the use of a commercially available finite element program, which can reduce the efforts of the users in solving the present problem with the finite element method.”

Possible extensions of the present work, including the activation of faults in a combined analysis with large-scale models of GIA, are now mentioned:

“The modeling can be extended to include: activation of faults, e.g., in a combined analysis with large scale models of GIA...”

Referee's Comment 1.13

Appendix: Parts are repetition of section 3.3. Please just mention what is really needed in each section.

Authors' Reply 1.13

Repetitions were removed from the Appendix and it is now shorter.

.

Referee's Comment 1.14

Technical comments

None.

Authors' Reply 1.14

All items noted in the comments of the Reviewer 1 have been addressed.

Anonymous Referee # 2.

Referee's Comment 2.1

General comments:

This study delivers profound results on the thermos-mechanical response of a fracture network situated in a host rock undergoing a small glacial advance of an ice-sheet. It evaluates long-term changes in pressure and temperature, as well as induced stress changes and displacement. The manuscript puts great emphasis on technical aspects of the numerical models and discusses nicely the generated model results. The comparison of HM and THM processes on a fracture network is a very nice and new aspect of this manuscript. In my view, especially the generated mean effective stress distribution is a highlight of this study.

Authors' Reply 2.1

The authors appreciate the reviewer's observations and interest on the topic of the paper.

Referee's Comment 2.2

Major criticism is that for a reader it is not immediately clear on which specific geological setting the numerical study is based on or whether it is a purely conceptual. Along with that are some missing justifications/explanations for input parameters as in section 3.3 and 3.5

Overall the study is well structured, clear and results are illustrated in a satisfying way. The manuscript is recommended for eventual publication with minor revisions as followed:

Authors' Reply 2.2

The dominant fracture network used in this work closely resembles the simplified version of the real fracture network found in a small (approx. 10x10 km) sub-region of the Canadian Shield described in the NWMO report by Chan and Stanchell (2008).

The authors have also included a comment and a reference to the source used to obtain the material parameters used in the study.

"The material properties for the intact rock and fracture zones are similar to those used by Chan and Stanchell (2008) for modeling the Canadian Shield sub-region."

Referee's Comment 2.3

P.7352 / Line 25: add a short comment on what specific geological setting the fracture network is based on (Ref. about the DECOVALEX Project?) or whether it is purely conceptual setting. This would help to understand the chosen material properties in section 3.5.

Authors' Reply 2.3

The domain of interest, which contains the set of fractures, is derived from the international DECOVALEX III project (Chan et al., 2005). The highly idealized geosphere model is based on data from the Whiteshell Research Area (WRA) in Manitoba, Canada. The studies by Chan and Stanchell (2005) provide the database of material properties in the simulations conducted on stationary aspects of glacial loads with specific emphasis on the hydro-mechanical modelling that uses the continental scale model of the Laurentide ice sheet developed by Boulton et al. (2004). The dominant fracture network closely resembles the simplified version of the real fracture network found in a small (approx. 10km x 10km) sub-region of the Canadian Shield at WRA.

Referee's Comment 2.4

P. 7356 / Line 10: maybe short justification for chosen subglacial temperature (warm/temperature glacier).

Authors' Reply 2.4

It is a warm-based glacier with the temperature at the interface with the bedrock always above the freezing point.

Referee's Comment 2.5

P. 7356 / Line 17: even if fractures include any type of separation in rock (joints & faults), maybe worth specifying here that fracture network represent a specific large-scale fault network, and any small-scale joints are neglected.

Authors' Reply 2.5

The intact rock is assumed to contain small-scale joints, minor fractures, pores and voids; these are not explicitly included into the model. In contrast, the dominant fracture network used in this work represents large-scale faults and closely resembles the simplified version of the real fracture network found in a small (approx. 10x10 km) sub-region of the Canadian Shield described in the NWMO report by Chan and Stanchell (2008).

Referee's Comment 2.6

Section 3.1: Is a model depth of 1700m sufficient to neglect boundary effects at the bottom? Does the influence, especially of the mechanical load, not penetrate deeper than 1700m for e.g. along large-scale structures as presented here in this study? [Referring here to a study, which analyses the purely mechanical aspect of the problem (Ustaszewski et al., 2008 Composite faults in the Swiss Alps formed by the interplay of tectonics, gravitation and postglacial rebound ...) over a scale of 5 km depth.]

Authors' Reply 2.6

The basal rigid stratum will have an influence on the THM processes that are investigated. The depth of 1.7 km was chosen to conform to previous studies conducted by Chan et al. (2005) and Chan and Stanchell (2005) so that there is a basis for comparison. When appropriate computing resources are available, the extent of the domain can, of course, be increased to accommodate depths similar to those employed by Ustaszewski et al (2008) when examining composite fault in the Swiss Alps formed by the interplay of tectonics, gravitation and postglacial rebound occurring at depth regimes of up to 5 km. Our preliminary computational experiments on thicker model domains showed the fluid velocity field and even the mean stress values are not strongly affected by an increase in the thickness. But the vertical displacement increases considerably as the thickness increases. However, we believe that with the given thickness of 1700 m we are able to capture, at least qualitatively, the most important effects of the moving glacial loading on a fractured rock's response (such as distribution of fluid velocity near and within fractures). The depth of the model domain can, of course, be increased, provided that appropriate computing resources are available, and this will be the subject of the future research work.

Referee's Comment 2.7

P 7362 / Line 15-32: I suggest revising that paragraph for the relevance of the full presented problem.

9

Authors' Reply 2.7

A reference to the actual geometry of the model is now included into the text. The sentence in the first paragraph of Section 3.2 was changed to:

"...for the given geometry of the rock mass, a parallelepiped with in-plane dimensions of 22 x 22 km and a thickness of 1700 m, "Normal" mesh parameters have the following values: maximum element size 2290 m, minimum element size 412 m, maximum element growth 1.5, resolution of curvature 0.6, resolution of narrow regions 0.5."

Referee's Comment 2.8

P 7363 / Line 5-11: I suggest revising that paragraph for the relevance of the full presented problem.

Authors' Reply 2.8

This paragraph was rephrased to the following:

"If the error message appears during mesh generation, it is recommended that the mesh size parameters be modified; even a small change in a parameter value can sometimes allow COMSOL to successfully construct the mesh. For example, for the given geometry with 21 fractures, one could construct the "Custom" mesh if the minimum element size is set to

152–154, 157, 159, 161, 167, 168, 170, 172, 186, 189 m in the range of all values from 152 m to 192 m. Otherwise, a change in the geometry should be attempted, such as deletion of the fracture that caused the error or a small translation of this fracture in the x-y plane. For example, deletion of the sub-horizontal fracture 2, marked in Figure 10, extends the list of minimum element sizes for which the “Custom” mesh can be constructed to: 152–154, 157, 160, 161, 163, 164, 168, 170, 172, 173, 175, 177, 178, 180, 189, 190 in the same range from 152 m to 192 m. We note that even if a certain fracture was removed from the model due to the error messages, another fracture can still be inserted.”

Referee’s Comment 2.9

P 7363 / Line 15-18: Can glacier change be simplified on sliding and volume change? A glacier undergoes also ductile creep / flow. Although assuming a constant shape seems like a fair assumption for this specific problem.

Authors’ Reply 2.9

The sentence in the first paragraph of Section 3.3 was rephrased to:

“In the following, it is assumed that the advance of the glacier is caused by sliding and the glacier shape does not evolve.”

10

The authors agree that creep and thermal effects can influence the profile of the glacier. These modifications are considered to be of secondary importance to the THM modelling exercise.

Referee’s Comment 2.10

P 7364 / Line 8: Since glacier velocity seems like an important parameter for the model, a short Ref. here might be useful to justify the chosen value. Are 5900y for 7500m glacier advance in realistic ranges as other studies might estimate for past glaciation cycles?

Authors’ Reply 2.10

The chosen glacier velocity (1.27 m/year) is indeed very small. This value of glacier velocity is about 100 times smaller than the one used by Chan et al. (2005) and about 10 times smaller than the velocity calculated by Aschwanden and Blatter (2009). Such a small glacier velocity was chosen to avoid problems with a loss of accuracy of the solution which arise when the glacier velocity becomes higher and the mesh is not sufficiently fine (see Section 4.1).

Referee’s Comment 2.11

P 7371 / Line 12 and equation (11 + 14): Temperature change is caused by glacier advance with the presented prescribed function. Does this equation take into account that the

approximated/smoothed glacier thickness (as shown in Figure 3) covers the bedrock much earlier than it would without the smoothed approximation?

Authors' Reply 2.11

The equation (14) takes into account the approximated/smoothed glacier thickness; the glacier covers the bedrock earlier than it would without the smoothed approximation.

Referee's Comment 2.12

P 7374 / Line 2: Should it not be (thermo-mechanical) rather than (hydro-mechanical) there, or did I misread the content?

Authors' Reply 2.12

Correction implemented.

11

Referee's Comment 2.13

Figure 1: Please distinguish better the two shown glacier stages (for e.g. dashed line

Authors' Reply 2.13

Two glacier contours are now distinguished in Figure 1.

Referee's Comment 2.14

Figure 5: Tough to see the difference between the bottom figure and top. Maybe plotting beside "Custom" mesh results, just the calculated difference in vertical fluid velocity between the two meshes?

Authors' Reply 2.14

Indeed, the difference between the bottom and top figures should be tough to see; otherwise the choice of the "Custom" mesh with much smaller number of nodes would be unjustified. It is not possible to plot the difference in fluid velocities between the two meshes as these two meshes have a different number of nodes.

Referee's Comment 2.15

Figure 9/10/12: Cross-profiles (as shown in Figure 6) through the fractured region could be very interesting for the reader especially for vertical displacement (Figure 9) and distribution of mean effective stress (Figure 10 and 12)

Authors' Reply 2.15

Many figures that show the behavior of the quantity (displacement, stress) along a profile at a certain depth have now been added to the manuscript (including Figs. 7, 9, 11, 13, 15, 17, and 19).

Thermo-hydro-mechanical processes in fractured rock formations during glacial advance

A.P.S. Selvadurai^a, A.P. Suvorov^a and P.A. Selvadurai^b

^aDepartment of Civil Engineering and Applied Mechanics, McGill University, Montréal, QC, Canada H3A 0C3

^bDepartment of Civil and Environmental Engineering, University of California, Berkeley, CA 94720, USA

ABSTRACT

The paper examines the coupled thermo-hydro-mechanical (THM) processes that develop in a fractured rock region within a fluid-saturated rock mass due to loads imposed by an advancing glacier. This scenario needs to be examined in order to assess the suitability of potential sites for the location of deep geologic repositories for the storage of high-level nuclear waste. The THM processes are examined using a computational multiphysics approach that takes into account thermo-poroelasticity of the intact geological formation and the presence of a system of sessile but hydraulically interacting fractures (fracture zones). The modeling considers coupled thermo-hydro-mechanical effects in both the intact rock and the fracture zones due to contact normal stresses and fluid pressure at the base of the advancing glacier. Computational modelling provides an assessment of the role of fractures that can modify the pore pressure generation within the entire rock mass.

Keywords: glacial loading, local fracture zones, thermo-hydro-mechanics of porous media, computational modelling, environmental geosciences

1. Introduction

The longevity constraints with regard to the safety of deep geologic sequestration of high level radioactive waste suggest that the conventional scientific approaches to the investigations that involve laboratory and field studies must be complemented by approaches that will allow predictions on time scales that are beyond conventional geological engineering activities involving underground facilities (Laughton et al., 1986; Chapman and McKinley, 1987; Rutqvist et al., 2005; Alonso et al., 2005). Current concepts for deep geologic storage require an assessment of the geological setting containing a repository to account for geomorphological processes that can occur over time scales of several thousands of years.

The major geomorphological process that is identified over this time scale is glaciation. Our attention is restricted to a geologic setting that has been investigated in connection with the DECOVALEX Project, and the domain of interest incorporates a system of fractures that are hydraulically connected but mechanically sessile under the influence of the glaciation loading.

The purpose of this paper is to examine coupled thermo-hydro-mechanical (THM) problems for a fluid-saturated rock mass that contains fracture zones and is subjected to glacial loads. The mechanical response of a fractured rock mass to a glacial cycle was studied in the paper by Steffen et al. (2014); it was shown that fracture zones can lose stability or slip during or after the deglaciation period of the cycle. The glacial cycle scenario was also included in the DECOVALEX studies (Chan et al., 2005) of a fractured rock mass and the current study extends this work to include THM effects and a more accurate treatment of the glacial loading. A secondary objective of the study is to assess the capabilities of a computational multiphysics finite element code COMSOL-Multiphysics® in examining a model domain that consists of an intact rock mass and fracture zones, both of which can exhibit THM processes.

The formulation of a coupled hydro-mechanical (HM) problem for fully saturated geological materials was presented by Biot (1941) and reformulated by several investigators including Rice and Cleary (1976) and Hamiel et al. (2005). The HM coupling gives rise to the Mandel-Cryer effect (Selvadurai and Yue, 1994; Selvadurai and Shirazi, 2004), which can explain the momentary increase in the pressure head in an aquifer when the ground water is drained upwards along a fault (Stanislavsky and Garven, 2003) and can predict changes in the fluid pressure induced by the slip of geological faults (Hamiel et al., 2005). Thermo-hydro-mechanical effects have also been of interest to many geoenvironmental processes including the geologic disposal of heat-emitting nuclear waste, frictional heating of faults (Lachenbruch, 1980; Rice, 2006), geothermal energy extraction (Dickson and Fanelli, 1995), and ground freezing resulting from buried chilled-gas pipelines (Selvadurai et al., 1999a,b). Solutions to pure fluid flow in heterogeneous formations and coupled thermo-poroelastic problems for fluid saturated geological materials have been obtained by several researchers (Booker and Savvidou, 1985; McTigue, 1986; Selvadurai and Nguyen, 1995, 1997; Nguyen and Selvadurai, 1995; Selvadurai, 1996; Khalili and Selvadurai, 2003; Selvadurai and Selvadurai, 2010; Selvadurai and Suvorov, 2012, 2014). Recent mathematical and computational studies of THM behaviour of fluid saturated media with both elastic and elasto-plastic skeletal behaviour are given by Selvadurai and Suvorov (2012, 2014) and experimental manifestations of the thermo-poroelastic Mandel-Cryer effect are also given by Najari and Selvadurai (2014).

The behaviour of a rock mass can be influenced by the presence of fractures and faults. Coupled THM behaviour of fractured rocks has been studied by several investigators and extensive references to this work can be found in areas related to geosciences and geomechanics (Noorishad et al., 1984; Selvadurai and Nguyen, 1995; Nguyen et al., 2005; Rutqvist et al., 2002; Guvanasen and Chan, 2000; Chan and Stanchell, 2008; Tsang et al., 2009). Thermo-hydro-mechanical processes in fractured rock formations can be analyzed using two approaches: in the first approach, by modeling discrete fractures and specifying their locations within a host rock, which is modeled as a fracture-free medium, and in the second approach by introducing the influence of fractures implicitly through the derived overall constitutive equations for the fractured medium.

Within a discrete fracture modeling approach, three distinct finite element formulations can be identified: special interface or joint elements (Selvadurai and Nguyen, 1995, 1999; Ng and Small, 1997; Nguyen and Selvadurai, 1998; Guvanasen and Chan, 2000; Steffen et al., 2014), the embedded manifold approach (Guvanasen and Chan, 2000; Juanes et al., 2002; Graf and Therrien, 2008; Erhel et al., 2009), and the conventional or direct approach, in which the fractures are modeled with the finite elements of the same spatial order; e.g., 3D fractures are modeled with 3D finite elements (Stanislavsky and Garven, 2003; Chan et al., 2005; Chan and Stanchell, 2005; Sykes et al., 2011). The multiphysics finite element code COMSOL-Multiphysics® used in this study has an efficient 3D mesh generator, well suited for discretizing complex geometries containing distinct narrow regions, such as fractures. Thus, in this paper, the THM problems investigated in connection with glacial loading will be examined using the conventional or direct approach.

In this study the rock mass is assumed to be an isotropic thermo-poroelastic domain with a network of dominant fractures that is integral with the surrounding intact rock. The intact rock is assumed to contain **small-scale joints**, minor fractures, pores and voids, **and they** are not explicitly included into the model. **In contrast, the dominant fracture network used in this work represents large-scale faults and closely resembles the simplified version of the real fracture network found in a small (approx. 10x10 km) sub-region of the Canadian Shield described in the HWMO report by Chan and Stanchell (2008).** The fracture network is placed at the interior of the rock mass domain and remote from its boundaries. Consequently, two distinct regions can be identified in the given rock mass: an interior region with fractures and an exterior region void of fractures. This allows for the observation of the THM response of the fractured region, particularly as the glacier advances, without any dominant influences of the boundaries.

2.5

1.5

2.2

2.3

In this work attention is restricted to a glacier of very large length which is initially at rest and then starts to move along the bedrock surface. The glacier motion or advance is assumed very small compared to glacier length. Since the glacier loading is highly nonuniform near the glacier front and very flat near its center, the major change in the response of the underlying bedrock caused by a small glacier advance is expected to occur near the initial location of the glacier front. Therefore, we will place the rock mass model domain containing fractures near the glacier front initial position and observe the response of the rock and fractures there. The size of the model domain is also chosen to be very small compared to glacier length although larger sizes would naturally provide for better accuracy of the solution. Since the nonlinear effects are not included in the present study, the initial fields existing in the rock before motion of the glacier has started can conveniently be set to zero, and then only the change in the response of rock caused by the glacier advance can be observed.

The paper is organized as follows. Mathematical description of thermo-poroelasticity problem is given in Section 2 whereas the finite element model is described in detail in Section 3. A few numerical tests that validate the model are presented in Section 4 and Section 5 contains the main computational results that illustrate the influence of glacial loading and temperature change on the development of fluid pressure, velocity, temperature, displacement and mean effective stress in the entire rock mass and within the individual fractures.

2. Governing equations

2.1 Constitutive models

For a linear elastic isotropic fluid-saturated rock, the total stress tensor σ_{ij} is related to the infinitesimal strain tensor ϵ_{ij} , the fluid pressure p , and the temperature T via the constitutive equation:

$$\sigma_{ij} = 2G_D \epsilon_{ij} + (K_D - \frac{2}{3}G_D) \epsilon_V \delta_{ij} - 3K_D \alpha_s T \delta_{ij} - \alpha p \delta_{ij} \quad (1)$$

In (1), ϵ_V is the volumetric strain, K_D and G_D denote respectively the bulk and shear modulus of the drained rock, α_s is the thermal expansion coefficient of the solid phase of the rock, and α is the Biot coefficient defined as $\alpha = 1 - K_D / K_s$, where K_s is the bulk modulus of the solid phase. The effective stress tensor σ'_{ij} is defined by:

$$\sigma'_{ij} = \sigma_{ij} + \alpha p \delta_{ij} \quad (2)$$

and it represents the stress supported by the solid skeleton.

For an isotropic fluid-saturated porous medium, Darcy's law can be written:

$$\mathbf{v}_i = -\frac{k}{\mu}(p_{,i} + \rho_f g \delta_{i3}) \quad (3)$$

where \mathbf{v}_i is the spatially averaged fluid velocity, k is the permeability of the rock, μ is the dynamic viscosity. Also, ρ_f denotes the fluid density and g is the gravitational acceleration; here it is assumed that the gravitational acceleration vector is pointing in the negative direction of the vertical z -axis.

We assume that the heat transfer in the system is through conduction only and the fluid flow velocity both in the pore space of the intact rock and through the fractures is slow enough so that the convective heat transfer terms can be neglected. It is also assumed that the deformations of the intact rock and the fractures along with the fluid flow processes do not result in generation of heat. Therefore, heat transfer in the entire rock mass is described by the Fourier law of heat conduction:

$$h_i = -k_c T_{,i} \quad (4)$$

where k_c is the equivalent thermal conductivity of the rock and h_i are the components of the heat flux vector.

Stress equilibrium equations written in terms of displacements u_i are given by

$$(K_D + \frac{4}{3}G_D)u_{k,ki} + G_D u_{i,kk} - 3K_D \alpha_s T_{,i} - \alpha p_{,i} - \{n\rho_f g + (1-n)\rho_s g\}\delta_{i3} = 0 \quad (5)$$

where n is the porosity, and ρ_s is the density of the solid phase.

From the fluid mass conservation law and Darcy's law (3) the fluid flow equation can be derived as

$$(\frac{n}{K_f} + \frac{\alpha - n}{K_s})\frac{\partial p}{\partial t} - \frac{k}{\mu}p_{,ii} + \alpha\frac{\partial u_{i,i}}{\partial t} = n3\alpha_f\frac{\partial T}{\partial t} + (\alpha - n)3\alpha_s\frac{\partial T}{\partial t} \quad (6)$$

where α_f is the thermal expansion coefficient of the fluid phase and K_f is the bulk modulus of the fluid phase.

From the thermal energy balance equation and Fourier's law (4) the heat conduction equation can be obtained as

$$c_p \frac{\partial T}{\partial t} - k_c T_{,ii} = 0 \quad (7)$$

where c_p is the equivalent specific heat of the rock. Equations (5) to (7) constitute a system of governing equations for a coupled THM problem. If the effect of temperature is neglected, i.e., $T \equiv 0$, we recover the equations applicable to the coupled hydro-mechanical (HM) problem. Each of the equations (5)–(7) is valid inside a domain with spatially uniform material properties, i.e., within the fractures or the intact part of the rock. The coupled THM problem described by the governing equations (5) to (7) is solved with the COMSOL finite element program. The equilibrium equations (5) are solved using Structural Mechanics Module of the program; the fluid flow equation (6) is solved using Earth Science Module (Darcy's Law); and the heat conduction equation (7) is solved using Heat Transfer Module. By default these Modules are uncoupled, but the user can connect them by adding additional terms to the appropriate equations of each Module as suggested by equations (5)–(6).

1.4

2.2. The Initial boundary value problem

Glacial loads on the surface of a rock mass arise due to the accumulation of snow, ice and water (Aschwanden and Blatter, 2009). The water content within a glacier is generally small (approximately 5 g of water per 1 kg of mixture) and the highest water content is found in the vicinity of the interface with the bedrock. The pattern of fluid flow both within and at the base of a glacier can be a complex THM process by itself. Problems associated with the mechanics of glaciers (Weertman, 1972; Marshall, 2005), the motion of glaciers (Picasso et al., 2004; Gomez et al., 2013; Stucki and Schlunegger, 2013; Ahlkrone et al., 2013; Thoma et al., 2014), their constitutive properties (Picasso et al., 2004; Marshall, 2005; Headley et al., 2012), the contact with the bedrock and the evolution of their shapes (Picasso et al., 2004; Dietrich et al., 2010; Headley et al., 2012; Nielsen et al., 2012; Gomez et al., 2013; Stucki and Schlunegger, 2013; Steffen et al., 2006, 2014) have been studied. The glacier dynamics on a centennial time scale due to climatic warming was studied by Hambrey et al. (2005), whereas the loss of ice mass due to recent high temperatures in Greenland was estimated by Sasgen et al. (2012).

1.3

Consider a model of a rock mass in the form of a parallelepiped with upper surface $z = z^{top}$ and lower surface $z = z^{bot}$. Assume that a glacier of a non-uniform thickness moves along the upper surface of the rock, $z = z^{top}$, parallel to the (x, y) -plane. The thickness of the glacier is denoted by $H = H(x, y, t)$, where (x, y) are the in-plane coordinates fixed at the base of the rock mass, as indicated in Figure 1. As an approximation of the complex shape of the glacier, the profile of the glacier is often considered to be parabolic (Chan and Stanchell, 2005; Chan et al., 2005; Steffen et al., 2014). In this case, the maximum ice-sheet thickness is

expected to occur at the glacier center, and zero thickness – at the glacier front. At the same time, it should be noted that the parabolic profile is very steep near the glacier front and very flat at the center.

In order to examine the response of a poroelastic rock mass subjected to glacial loads, it is important to adequately take into account the interaction of the glacier with the underlying bedrock. On the temporal scale of interest to the glacial loading of a rock mass containing fracture zones, a simpler representation of the glacier can be adopted. Firstly, mechanical loading due to the weight of the ice sheet needs to be prescribed (Bangtsson and Lund, 2008; Read, 2008). The mechanical loading corresponds to the changing ice-sheet thickness $H(x, y, t)$ and is applied as a time- and space-varying normal stress at the upper surface of the rock mass (Chan et al., 2005; Chan and Stanchell, 2008; Read, 2008; Person et al., 2012; Steffen et al., 2006, 2014). Since the densities of the glacier constituents, water and ice, are almost equal, the total normal stress acting on the upper surface due to the presence of the glacier is given by

$$\sigma_{zz}(x, y, z^{top}, t) = -\rho_f g H(x, y, t) \quad (8)$$

Secondly, hydraulic boundary conditions must be prescribed. Boulton et al. (1995), Boulton and Caban (1995), Chan et al. (2005) and Person et al. (2012) state that if the permeability of the underlying rock is sufficiently low to discharge all basal melt-water as groundwater alone, groundwater heads are approximately equal to the ice pressures and the effective pressures are low. For example, Person et al. (2012) prescribed head boundary conditions on the upper surface of the sedimentary basin assuming that the head is equal to 90% of the ice sheet elevation. In this study the intact rock is assumed to have a very low permeability, and thus, the fluid pressure acting on the upper surface can be approximated by

$$p(x, y, z^{top}, t) = -\sigma_{zz}(x, y, z^{top}, t) = \rho_f g H(x, y, t) \quad (9)$$

Therefore, the effective stress exerted by the glacier on the upper surface of the rock mass can be evaluated from (2) and (9) as

$$\sigma'_{zz}(x, y, z^{top}, t) = -(1 - \alpha)\rho_f g H(x, y, t) < 0 \quad (10)$$

To account for thermal loading caused by presence of the glacier, the temperature change can be prescribed on the upper surface as

$$T(x, y, z^{top}, t) = T_u(x, y, t) \quad (11)$$

where T_u is a prescribed function.

On the lower surface of the rock mass, $z = z^{bot}$, we prescribe zero values for the vertical displacement u_3 , the fluid velocity and the heat flux:

1.3

1.3

$$u_3 = 0; \quad \frac{\partial p}{\partial z} = 0; \quad \frac{\partial T}{\partial z} = 0; \quad z = z^{bot} \quad (12)$$

On the vertical perimeter edges of the rock model we impose zero displacement, fluid velocity, and heat flux in the direction of the normal to the surface:

$$u_n = 0; \quad \frac{\partial p}{\partial n} = 0; \quad \frac{\partial T}{\partial n} = 0 \quad (13)$$

where $\partial / \partial n = \mathbf{n} \nabla$ is the derivative in the direction normal to a surface.

Initial fields within the rock mass correspond to the fields existing at the onset of glacier motion and thus should include stresses due to the weight of the glacier at its initial position, geostatic stresses, hydrostatic fluid pressure, the temperature distribution due to the geothermal heat flux, etc. In this work we focus our attention only on the *change* in the response of the rock mass caused by small glacier *advance*, and thus zero initial conditions can be prescribed, if the problem is linear.

3. Finite element modeling

3.1 Model geometry

Figure 1 shows geometry of the fractured rock mass model used in the present study. The region of the rock mass is a parallelepiped with in-plane dimensions of 22000 m x 22000 m and a thickness of 1700 m. The fracture network is located at the interior of the rock mass domain, remote from its boundaries. The specific fracture network examined here contains a system of 21 planar fractures within a region of (approximately) 11550 m x 10200 m. Details of the fracture network are shown in Figures 1, 2 and 10. Each dominant fracture has the shape of a prism or prismatoid. The thickness of each fracture is set to 10 m. This is a realistic size for a fracture; an example of a 10-m wide fracture zone situated in the Rhone Valley of the Alps, the Simplon normal fault, is given in the paper by Stucki and Schlunegger (2013). In the fracture network 14 fractures are subvertical with high dip angle (close to 90°), and 7 fractures are subhorizontal with low dip angle (close to 0°). Among 14 subvertical fractures 13 fractures span the entire thickness of the rock model. Fractures that do not span the entire thickness of the rock (e.g., subhorizontal) originate at the upper surface of the rock. The subhorizontal fractures are numbered from 1 to 7 on Figure 10.

Each fracture zone is defined by its surface which constitutes a planar quadrilateral formed by the four vertices lying in the same plane. To facilitate construction of the fracture surface, a 2D workplane is constructed for each fracture. Orientation of the workplane is defined by specifying coordinates of the vector normal to the fracture surface. The fracture

contour is drawn in the workplane by specifying coordinates of the four vertices of the fracture surface, transformed to the local coordinate system of the workplane. Subsequently, the fracture surface is extruded at a distance equal to the thickness of the fracture zone (10 m), forming a 3D prism. Then this prism is embedded into a specified place within the geometry of the rock.

If a fracture originates at the upper surface of the rock, the upper edge of the fracture zone is expected to coincide with the upper surface of the rock, which is horizontal. However, after the extrusion process described above, if the fracture zone is not strictly vertical, the upper edge of the fracture (being orthogonal to the fracture surface) will be inclined with respect to the horizontal surface of the rock. Such a configuration may cause problems later during mesh generation since the edge of the fracture lies too close to the surface of the rock. To correct this geometry, the fractures' surfaces in their respective workplanes can be extended in such a way that, after extrusion and embedding, the fracture intersects the upper surface of the rock and extends beyond it. Then we simply cut off the portion of the fracture zone above the upper surface of the rock, by using, for example, the subtraction operation. Similar corrections can be performed with respect to other edges of fractures that lie too close to the lower surface of the rock or to the perimeter surfaces. It should be noted that the fracture obtained in this way is a prismatoid and no longer an extruded feature.

Typically, it is desirable to have the capability of inserting into the 3D geometry as many fractures as possible. On the other hand, if the geometry becomes too complex, the mesh may not be generated. Problems with mesh generation may arise when a) the fractures are not parallel, i.e., have various orientations in space, b) the number of intersections between fractures is too large, c) the distance between the neighboring fractures is too small, i.e., they are too close to each other, d) the thickness of fractures is too small. These conditions naturally place a limit on the number and the type of fractures that can be successfully inserted. We managed to insert only 21 fracture zones into the geometry of the given rock mass as shown in Figure 1.

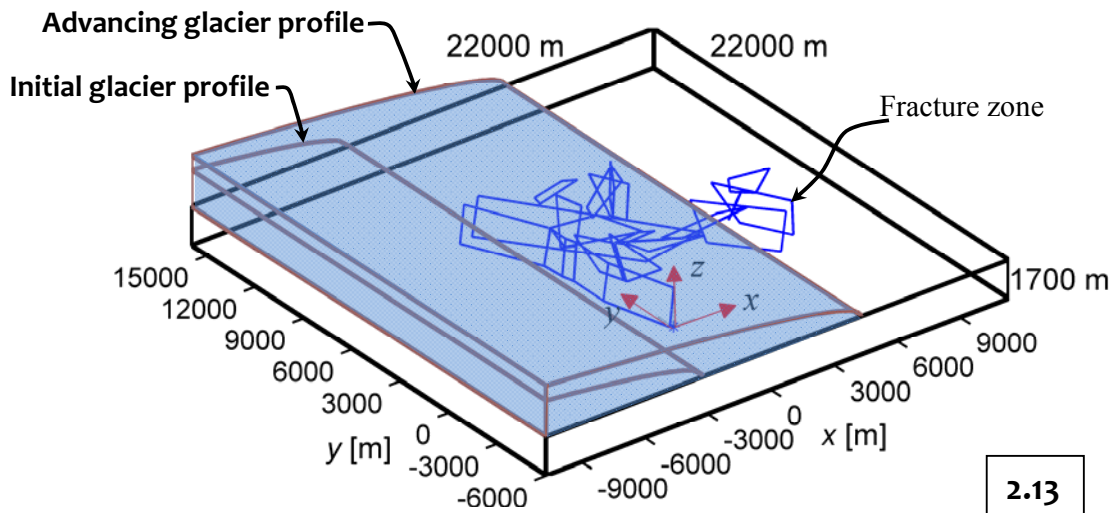


Fig. 1. Geometry of the fractured rock mass subjected to loading by the advancing glacier.

3.2 Mesh generation

The COMSOL finite element software has a powerful mesh generator engine. For 3D analysis only tetrahedral elements can be used and by default the order of the elements is quadratic. There are several predefined element sizes such as: “*Extremely Coarse*”, “*Extra Coarse*”, “*Coarser*”, “*Coarse*”, “*Normal*”, “*Fine*”, “*Finer*”, “*Extra Fine*”, “*Extremely Fine*” and, in addition, the user can define his own element size, “*Custom*” mesh size. Each mesh is characterized by the following parameters: maximum element size, minimum element size, maximum element growth, resolution of curvature and resolution of narrow regions. The values of these parameters are geometry-dependent. For example, for the given geometry of the rock mass, a parallelepiped with in-plane dimensions of 22 x 22 km and a thickness of 1700 m, “*Normal*” mesh parameters have the following values: maximum element size 2290 m, minimum element size 412 m, maximum element growth 1.5, resolution of curvature 0.6, resolution of narrow regions 0.5.

2.7

If the model geometry is too complex, e.g. containing fractures, it might not be possible to construct the mesh with the predefined mesh sizes indicated above, which results in error messages. For example, for the present geometry of the fractured rock mass, COMSOL failed to construct the “*Normal*” mesh, but managed to construct the “*Extra Fine*” mesh consisting of 3,321,534 elements and a “*Fine*” mesh with 223,530 elements. COMSOL also managed to construct the “*Custom*” mesh, with even smaller number of elements, for which we assigned the following values to the parameters: maximum element size 1690 m, minimum element

size 172 m, maximum element growth 1.6, resolution of curvature 0.7, resolution of narrow regions 0.5. The resulting “*Custom*” mesh has 158,728 tetrahedral elements and is shown in Figure 2.

If the error message appears during mesh generation, it is recommended that the mesh size parameters be modified; even a small change in a parameter value can sometimes allow COMSOL to successfully construct the mesh. For example, for the given geometry with 21 fractures, one could construct the “*Custom*” mesh if the minimum element size is set to 152–154, 157, 159, 161, 167, 168, 170, 172, 186, 189 m in the range of all values from 152 m to 192 m. Otherwise, a change in the geometry should be attempted, such as deletion of the fracture that caused the error or a small translation of this fracture in the x - y plane. For example, deletion of the sub-horizontal fracture 2, marked in Figure 10, extends the list of minimum element sizes for which the “*Custom*” mesh can be constructed to: 152–154, 157, 160, 161, 163, 164, 168, 170, 172, 173, 175, 177, 178, 180, 189, 190 in the same range from 152 m to 192 m. We note that even if a certain fracture was removed from the model due to the error messages, another fracture can still be inserted.

2.8

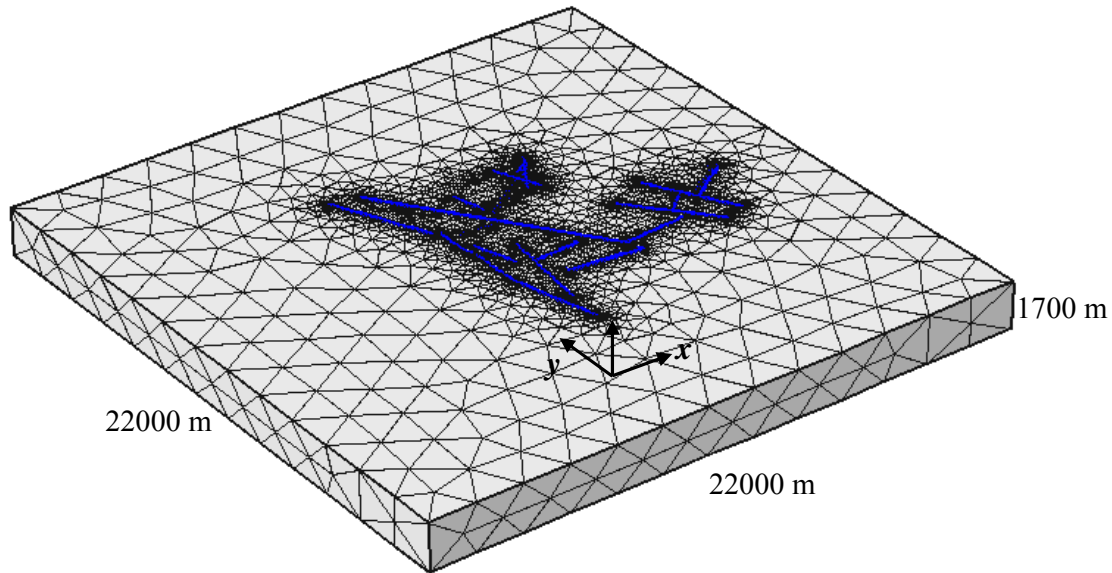


Fig. 2. Finite element discretization of the rock mass with a system of interconnecting fracture zones. A discretization of 158,728 tetrahedral elements is used.

3.3 Glacial loading

The primary emphasis of this work is to examine the THM response of the fractured rock mass when it is subjected to advancing glacial loads. In the following it is assumed that the advance of the glacier is caused by sliding and the glacier shape does not evolve.

2.9

Figure 1 shows the glacier profile at time $t = 0$ and at time $t > 0$, after the glacier has moved a distance of 7500 m parallel to the x -axis. The glacier front is assumed to be parallel to the y -axis. Initially, at time $t = 0$, the glacier partially covers the model domain over the length of 7500 m; its front is located at $x = -3159$ m (Figs. 1 and 3). It should be noted that the total glacier length is much larger than depicted in Figure 1 but here only the marginal zone of the glacier that falls within the relatively small (compared to glacier length) dimensions of the model domain is shown.

The thickness of the glacier is non-uniform and can be described by the function $H(X, t)$, where X is the distance from the center of the glacier (datum point). Let H_{\max} be the maximum thickness of the glacier (at the center), and L be the glacier length, i.e., distance from the glacier center to its front. Then the function $H(X)$ at time $t = 0$ satisfies $H(0) = H_{\max}$ and $H(L) = 0$. The specific form of the function $H(X, t)$ adopted from the

1.6

paper by Paterson (1972) is shown in Figure 3 and described in Appendix A. The maximum glacier thickness is set equal to $H_{\max} = 3200$ m and $H_{\max}^2 / L = 7.7$, which gives the length $L = 1329870$ m. The profile of the ice sheet, shown in Figure 3, is similar to that shown in Figure 6 of the paper by Boulton and Caban (1995), in which at a distance of 4000 m from the ice sheet front the glacier thickness becomes equal to 300 m. The x -coordinate of the model domain, shown in Figures 1 and 3, and the glacier X -coordinate are related by $x = X - 1333029$ m. The model domain boundaries are shown in Figure 3 with vertical dashed lines.

1.6

The velocity of the glacier V is assumed to be $4.0306 \text{ E}-8$ m/s, which is approximately 1.271 m/year. Thus, in 5900 years the ice sheet front will advance by a distance of 7500 m across the model domain (see Fig. 3). This value of glacier velocity is about 100 times smaller than the one used by Chan et al. (2005) and about 10 times smaller than the velocity calculated by Aschwanden and Blatter (2009). Such a small glacier velocity is chosen to avoid problems with a loss of accuracy of the solution which arise when the glacier velocity becomes higher and the mesh is not sufficiently fine (see Section 4.1). In addition to the actual glacier profile, shown with a solid line, Figure 3 shows an approximation to this profile with a dashed line. This approximation coincides with the actual glacier profile away

1.6

2.10

from the ice sheet front; however, close to the leading edge of the ice sheet it replaces the actual profile with a much smoother function. In actual numerical computations, the use of this approximation is advantageous since it does not have any sharp corners; smoothing the loading profile has an extremely favorable effect on the convergence properties of the computational scheme, especially when using iterative solvers.

As mentioned, the initial or in-situ state is not modeled in the present study, and therefore the loading applied to the surface of the rock mass only corresponds to the difference between the current position of the glacier, at time t , and its initial position at $t = 0$. (This is an admissible simplification of the problem when the problem is linear.) In this case, the maximum glacier loading will always be applied at the initial position of the glacier front; the amount of the glacier loading will decrease away from the initial positioning of the leading edge.

In the following we focus our attention on the response of the rock mass over a short time (e.g., 5900 years), for a small glacier advance, when the glacier front is still close to the fractured region of the rock and the glacier center remains at a **very large** distance from the fractured region. Thus, we do not compute the results corresponding to the maximum value of the glacier loads, when the glacier center itself overruns the model domain. The choice of the time frame can be explained by the highly non-uniform distribution of the glacier load near the front of the glacier; our intention is to study the effect of this non-uniform load. In addition, we believe that the glacial sliding is limited *to small distances* compared to the overall glacier length.

3.4 Finite element solver

The response of the rock mass was obtained by using the transient finite element (FE) solver in COMSOL. The numerical integration in time was implicit by default, which implies that a matrix factorization is required at each time step. Selecting the proper FE solver is of outmost importance because of the size of memory required, computational time limitations and issues related to convergence. In order to solve the hydro-mechanical (HM) problem (5)–(6) for the “*Custom*” mesh, a direct solver, such as the SPOOLES solver, requires a very large memory (larger than 30 GB) and a significant amount of time for matrix factorization. Thus, a direct solver cannot be used for the present problem. After testing several iterative solvers available in COMSOL, it was found that the iterative GMRES solver with the geometric multigrid preconditioner was, in fact, the only solver capable of dealing with this problem within a reasonable time frame (**approximately 3 hours of runtime when solving HM**

problem and 8 hours for THM problem). On the memory side, GMRES required only slightly more than 6 GB of RAM. Other preconditioners had slower run times due to convergence issues.

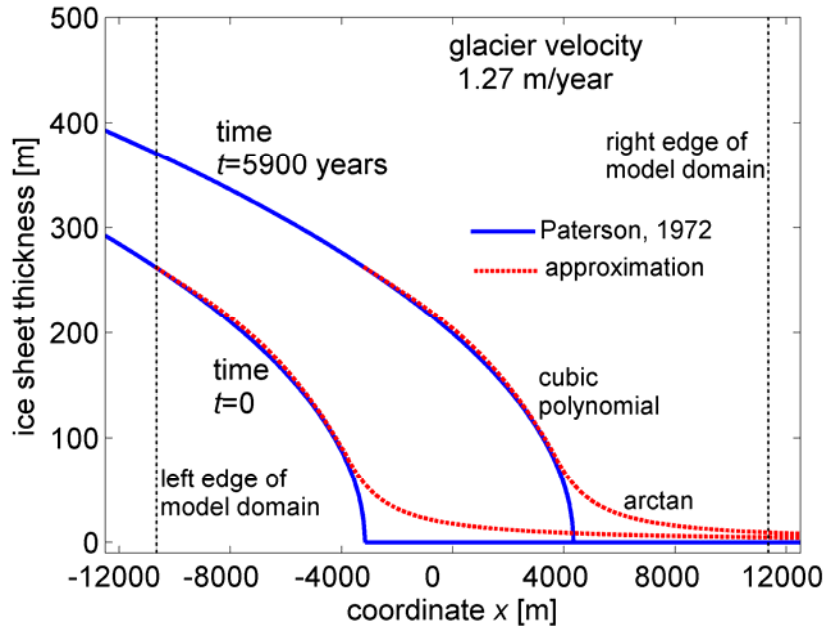


Fig. 3. Distribution of the glacier thickness in the ice sheet marginal zone. The exact glacier shape is shown with a solid line, and the approximation to the exact shape, used in the computational simulations, is shown with a dashed line.

3.5 Material properties

The fracture zones have THM properties substantially different from those of the intact rock. In particular, the permeability of the fracture zones is taken to be about six orders of magnitude greater than the permeability of the intact rock, whereas the Young's modulus is assumed to be approximately 10 times smaller.

The properties of the intact rock and the fractures used in our computational simulations are the following: Young's modulus E_D is 30 GPa for the intact rock and 3 GPa for the fractures; Poisson ratio ν_D is 0.25; Biot coefficient α is 0.7; permeability k is $1.55\text{E-}19\text{ m}^2$ for the intact rock and $3\text{E-}13\text{ m}^2$ for the fractures; dynamic viscosity μ is $0.001\text{ Pa}\cdot\text{s}$; fluid bulk modulus K_f is 2.2 GPa; thermal expansion coefficient for the solid phase α_s is $8.3\text{E-}6\text{ 1/}^\circ\text{C}$ and for the fluid phase α_f is $69\text{E-}6\text{ 1/}^\circ\text{C}$; equivalent specific heat c_p is $1830500\text{ N/(m}^2\text{ K)}$, equivalent conductivity k_c is 3.66 W/(m K) both for the intact rock and for the fracture zones. The porosity is assumed to be 0.05 for both the fracture zones and the intact rock. These

material properties for the intact rock and fracture zones are similar to those used by Chan and Stanchell (2008) for modeling the Canadian Shield subregion.

1.8

2.2

4. Model validation

In this section we validate our choice of the user-defined “*Custom*” mesh, consisting of 158,728 tetrahedral elements (Fig. 2), and show that this mesh is suitable for solving the given problem of the bedrock response if the glacier speed is as low as 1.27 m/year. We will refer to this “*Custom*” mesh as ‘fracture-biased’ mesh.

4.1 Mesh validation for homogeneous rock

The first validation procedure involves analysis of the hydro-mechanical (HM) solutions for the homogeneous rock, i.e. the rock in which properties of the fractures are the same as those of the intact part. Here we examine how the presence of the densely-refined regions in the mesh, in close proximity to the ‘fracture’ zones, may affect the solution. To do so, in addition to the “*Custom*” mesh we consider the regular mesh with only 5786 elements that does not account for the presence of ‘fracture’ zones.

Figure 4 shows the distribution of vertical fluid velocity v_z in the homogeneous rock for the two meshes described above. The time is 5900 years, during which time the glacier has moved a distance of 7500 m. The current position of the glacier front corresponds to transitioning from negative to positive velocity values, which is clearly seen in the figure. The magnitude of the negative velocity is considerably larger than the positive velocity. It can be seen that the fluid velocity distributions for the two meshes are quite similar, i.e., the presence of densely-meshed fracture zones does not change the solution significantly. This is an expected result since the rock is homogeneous. Our numerical tests also showed that the solution for the “*Custom*” fracture-biased mesh deviates significantly from the regular solution once the glacier speed is increased to 12.7 m/year. This implies that for larger glacier velocity, the finer mesh will be required.

4.2 Mesh validation for hydraulic problem

The second validation procedure employed involves a comparison of the solutions for two meshes: the user-defined “*Custom*” mesh with 158,728 elements and the predefined “*Extra fine*” mesh with 3,321,534 elements. Taking into account that the “*Extra fine*” mesh has a massive number of elements, which would require a considerable amount of memory,

we could solve only the “pure” hydraulic problem (6) in which the deformations of the porous skeleton are suppressed, thus reducing the number of unknowns.

Figure 5 shows the distribution of vertical fluid velocity v_z in the intact rock for the two meshes described above. It can be seen that the vertical fluid velocity distributions for the two meshes are very similar. As before, the fluid velocity behind the glacier front is negative and it is positive ahead of it. The fluid velocity in the intact rock between the fractures is significantly reduced as indicated by the dark blue colour of the fracture-free region of the rock changing to green, yellow and even red colours in the region between the fractures.

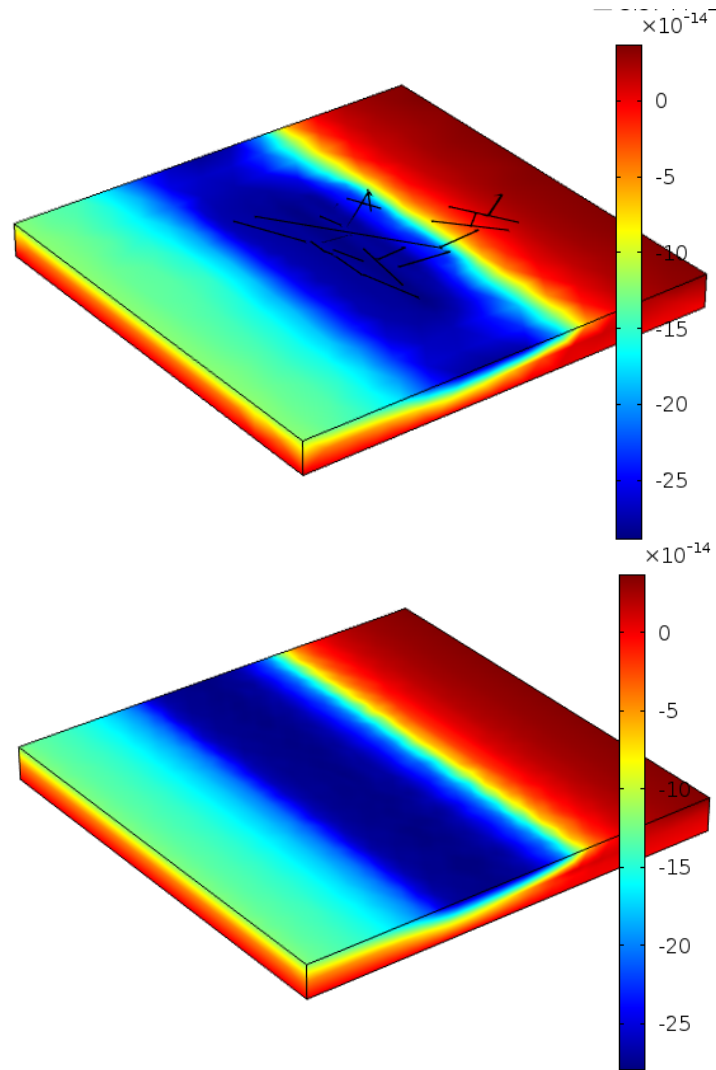


Fig. 4. Vertical fluid velocity [m/s] in the *homogeneous* rock for the fracture-biased mesh with 158,728 elements (top) and for the regular mesh with 5786 elements (bottom). Time is 5900 years and glacier velocity is 1.27 m/year.

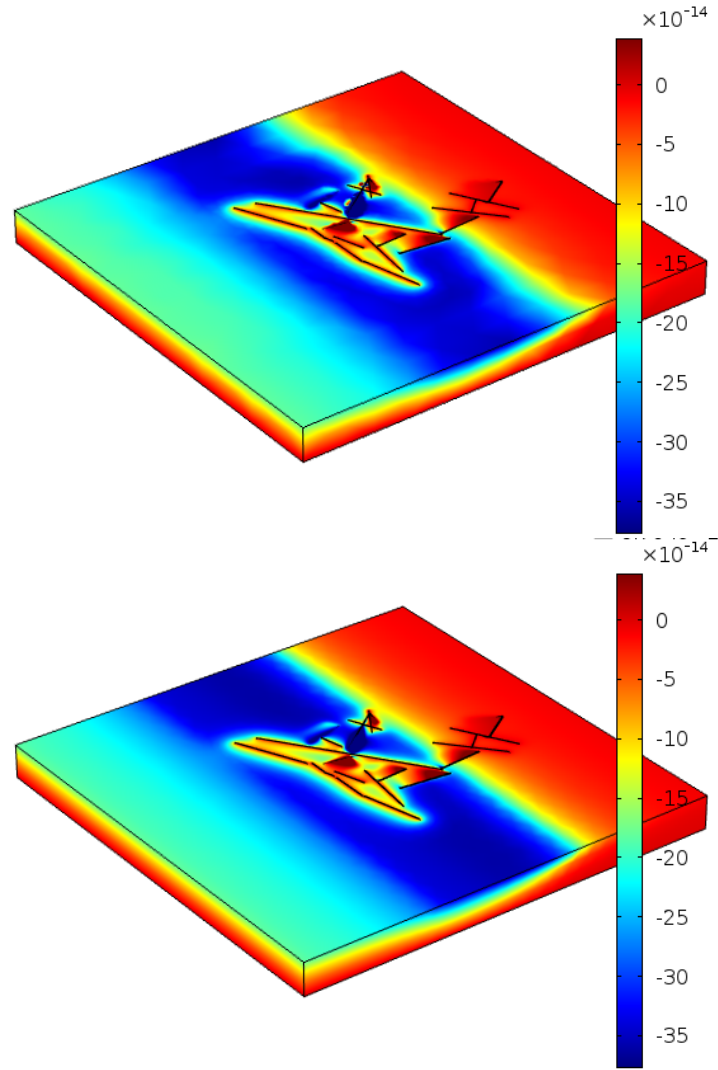


Fig. 5. Vertical fluid velocity [m/s] in the intact part of the fractured rock for “Custom” mesh (top) and “Extra Fine” mesh (bottom). Time is 5900 years and glacier velocity is 1.27 m/year. The velocity is obtained by solving a pure hydraulic problem.

5. Numerical example

5.1 Solution of HM problem for “Custom” mesh

Figures 6 to 15 show the hydro-mechanical response of the fractured rock subjected to glacial loading, described previously, at time 5900 years. The time-dependent fluid pressure and vertical compressive stress induced by the glacial load are applied to the upper surface of the rock mass as prescribed by (8) and (9). The solution is obtained by solving hydro-mechanical problem (5)–(6) on the user-defined “Custom” mesh. For more accurate results, the model domain, shown in Figures 1–2, was augmented along the x -axis by 2 blocks of

length 22000 m each behind the glacier front, and by 1 block of length 14000 m ahead of the glacier front. The total length of the augmented domain is therefore 80000 m, while the size along the y -axis remains the same – 22000 m. Mesh size parameters retain the same values as for the user-defined “Custom” mesh, described above. The new blocks are fracture-free and are discretized using regular, non-biased meshes. The resulting mesh for the extended domain has 167 303 tetrahedral elements, just slightly more than the fracture-biased mesh for the main block of the domain, containing fractures. The increased length of the model domain enables us to take into account the glacier loading more accurately.

Figure 6 shows the typical fluid pressure distribution at *the interior, fractured region* of the rock and *exterior, homogeneous* region at time 5900 years. To capture the response in the fractured region, the fluid pressure was plotted in the cross-section where the y -coordinate was equal to 6200 m, which is approximately at the mid-section of the rock mass (see Fig. 1). As is expected, the fluid pressure close to the lower surface is generally smaller than the pressure applied at the upper surface. The maximum fluid pressure occurs close to the initial location of the ice sheet front, i.e., to $x = -3159$ m. Within and around the fractures the fluid pressure is almost uniform through the thickness as the pressure induced at the lower surface is almost equal to the pressure applied at the upper surface. Such a response is caused by the high permeability of the fractures. However, away from the fracture zones, the pressure at the lower surface remains smaller than that at the upper surface, due to the low permeability of the intact rock. This pressure difference creates a vertical pressure gradient $\partial p / \partial z$ and a fluid flow in the downward direction. For the purpose of comparison, Figure 6 also shows the distribution of fluid pressure in the homogeneous region of the rock in a cross-section parallel to the x -axis; the influence of the fractures in altering the fluid pressure distribution in the region due to glacier loading is quite evident. In particular, we can observe that the pressure in the intact rock in close proximity to the fractures is larger than the pressure in the fracture-free, or homogeneous, region of the rock, for the same value of the x -coordinate. This implies that the vertical fluid velocity in the intact rock near the fractures is generally expected to be smaller than that in the homogeneous region of the rock (see also Figs. 7, 8).

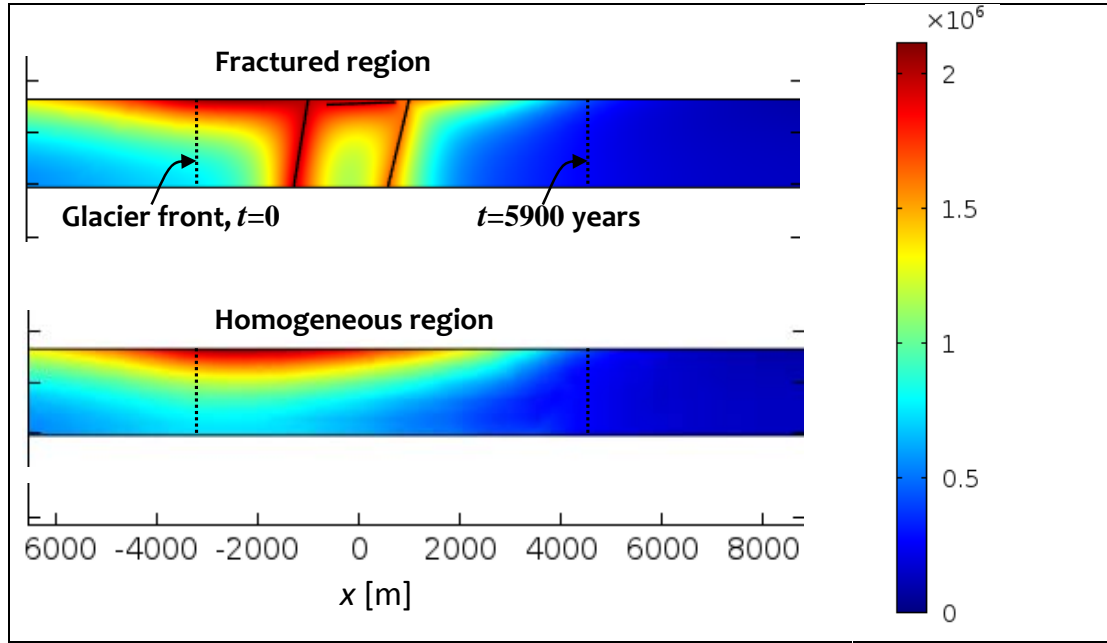
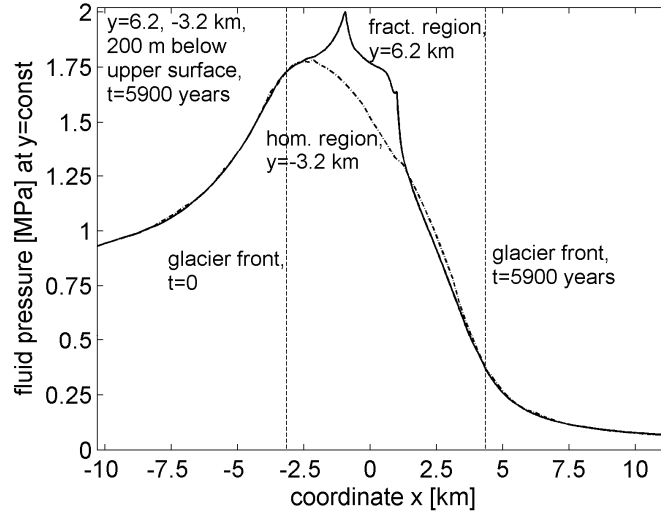


Fig. 6. Distribution of fluid pressure [Pa] in the fractured and homogeneous regions of the rock in cross-sections $y=const$ at time 5900 years. For the fractured region $y=6200$ m. The rock is subjected to spatially non-uniform fluid pressure and compressive stress.

Figure 7 shows the fluid pressure variation at a depth of 200 m from the upper surface plotted as a function of x -coordinate for two cross-sections: $y=6200$ m, in the fractured region of the rock mass, and $y=-3200$ m, in the homogeneous region. The time is 5900 years. As before, the fluid pressure and stress changes caused by the glacial advance of 7500 m are applied at the upper surface of the rock mass. From the figure it is evident that the fluid pressure in the intact part of the fractured rock is larger than that in the homogeneous region of the rock, for the same value of the x -coordinate. This implies that the pressure gradient, and therefore, fluid velocity in the intact part of the fractured rock is smaller, in absolute value, than that in the homogeneous rock (given that the fluid pressure applied at the upper surface exceeds 2 MPa).



1.9

2.15

Fig. 7. Variation of fluid pressure [Pa] in the cross-sections of the fractured and homogeneous regions of the rock $y=6200$ and -3200 m respectively, at a depth of 200 m at time 5900 years. The rock is subjected to spatially non-uniform fluid pressure and compressive stress.

Figure 8 shows the vertical fluid velocity v_z in the intact part of the rock with fracture zones at time 5900 years. The vertical velocity distribution in the rock is complex. The fluid velocity can be both positive and negative. A negative fluid velocity implies that fluid flow takes place into the rock (i.e., downwards) and a positive fluid velocity implies that the fluid flows out of the rock (i.e., upwards). It can be seen that, in general, the magnitude of the negative velocity is much larger than the positive velocity, which is consistent with the direction of the melt-water flow. In fact, beneath the glacier most of the fluid flows into the rock with a velocity of $-3E-13$ m/s and, exterior to the glacial footprint, most of the fluid flows out of the rock with a velocity $2.5E-14$ m/s. Between the fractures the magnitude of the negative fluid velocity in the intact rock is in general smaller compared to that in the homogeneous region of the rock (as the dark blue color in the exterior region of the rock changes to light blue, yellow and even red in the interior region at close proximity to the fractures).

Figure 9 shows variation of the vertical fluid velocity in the intact part of the rock mass with fractures in the cross-sections $y=6200$ and -3200 m corresponding to the fractured and homogeneous regions, respectively, at a depth of 200 m from the upper surface, at time 5900 years. The figure clearly shows how the presence of fractures affects the fluid velocity in the intact rock near the fractures: the fluid velocity in the intact rock of the fractured region is smaller, in absolute value, than the velocity in the fracture-free region of the rock.

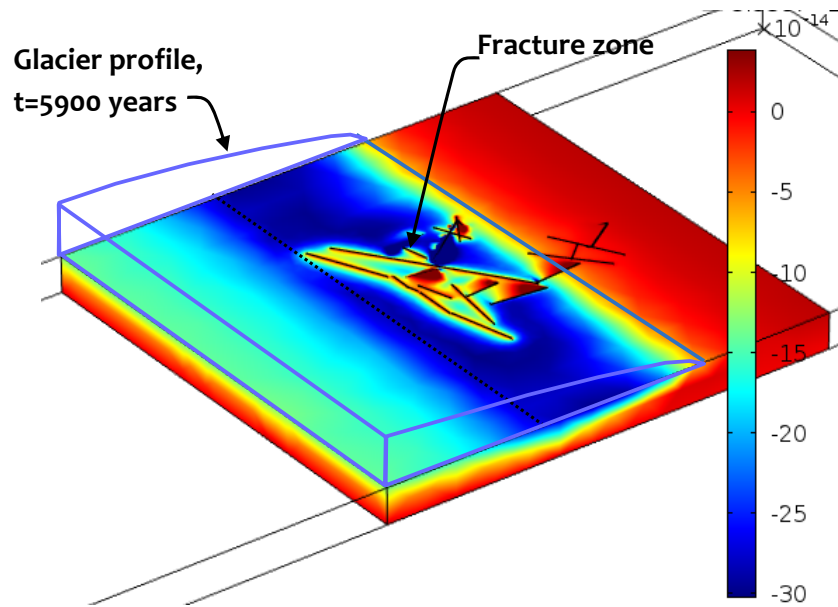


Fig. 8. Distribution of the vertical fluid velocity [m/s] in the intact part of the rock mass with fracture zones at time 5900 years. The rock mass is subjected to spatially non-uniform fluid pressure and compressive stress imposed by the advancing glacier.

33

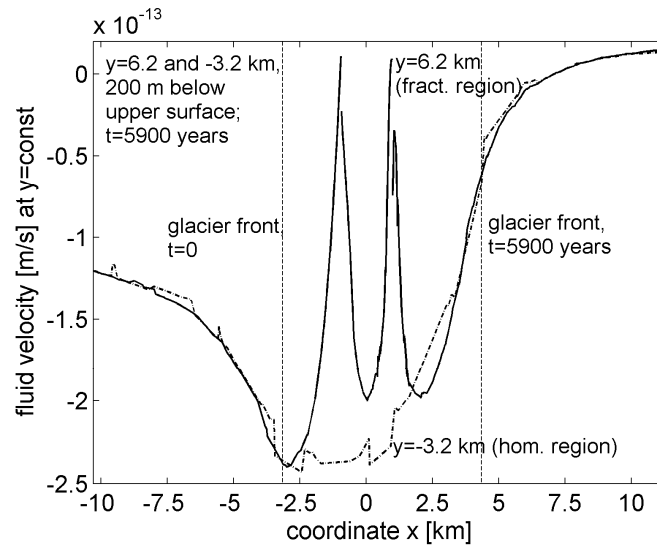


Fig. 9. Vertical fluid velocity [m/s] in the intact part of the rock mass with fracture zones for the cross-sections $y=6200$ m and -3200 m in the fractured and homogeneous regions respectively, at a depth of 200 m, at time 5900 years.

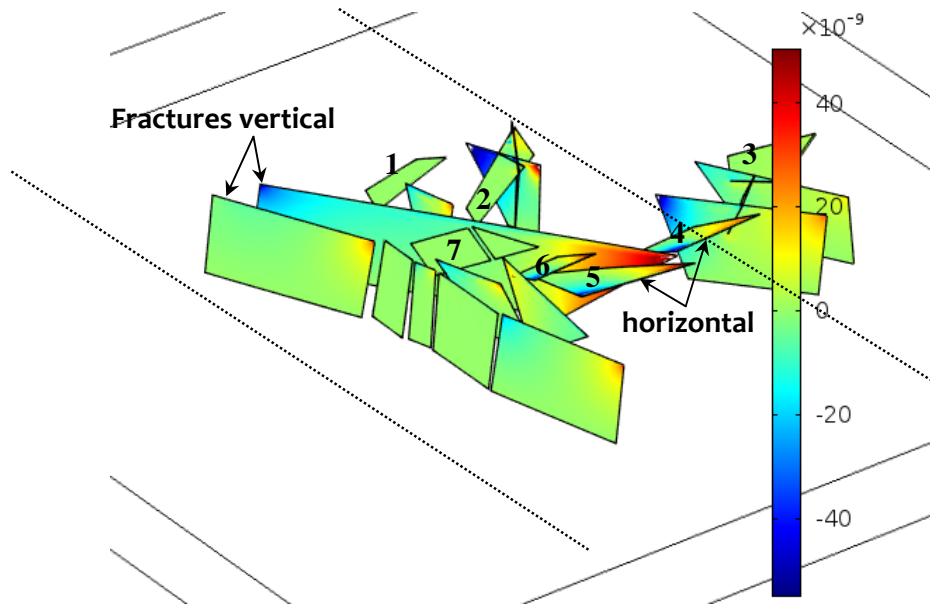


Fig. 10. Distribution of the vertical fluid velocity [m/s] within the fracture zones at time 5900 years. The rock mass is subjected to spatially non-uniform fluid pressure and compressive stress imposed by the advancing glacier. Subhorizontal fractures are numbered 1–7.

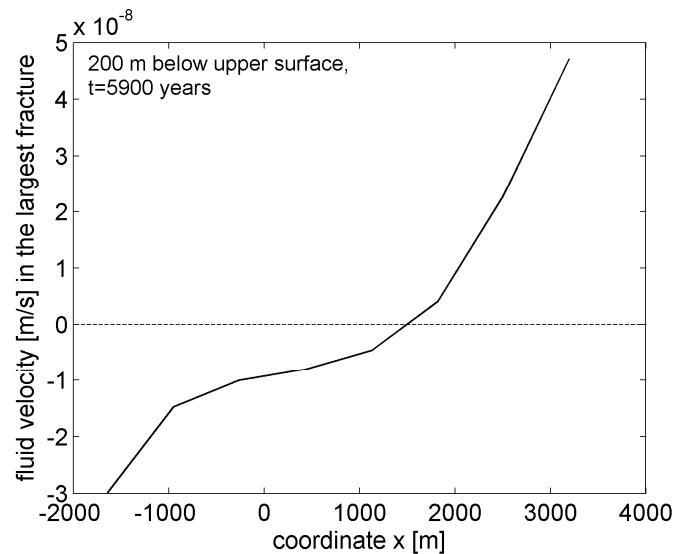


Fig. 11. Variation of the vertical fluid velocity [m/s] in the largest fracture zone, at a depth of 200 m, at time 5900 years. Velocity is approximately uniform across the fracture's thickness.

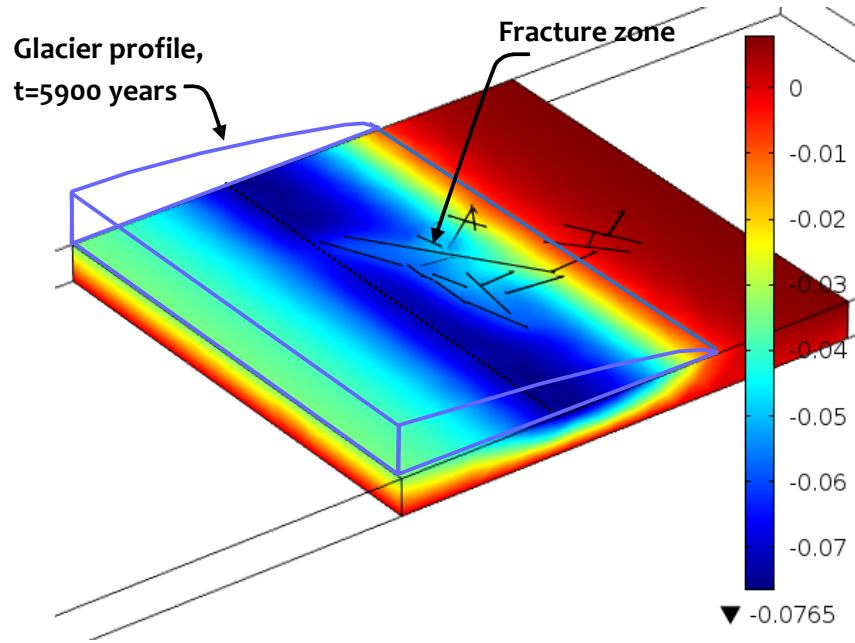


Fig. 12. Vertical displacement [m] of the rock mass with fractures at time 5900 years. The rock is subjected to spatially non-uniform fluid pressure and compressive stress.

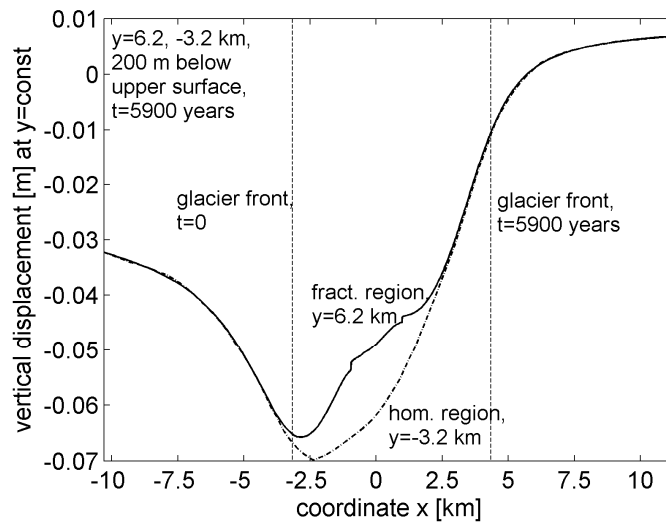


Fig. 13. Variation of the vertical displacement [m] in the rock mass with fractures in the cross-sections $y=6200$ m and -3200 m corresponding to the fractured and homogeneous regions respectively, at a depth of 200 m, at time 5900 years.

Figure 10 illustrates the vertical fluid velocity v_z within the fractures of the rock at 5900 years. It can be seen that in the fractures oriented sub-vertically (most fractures are sub-vertical) the fluid velocity is much larger than that in the intact part of the rock (compare Fig. 10 with Fig. 8). In fact, the maximum fluid velocity in the fractures can reach a value of -5.5×10^{-8} m/s, which is about 50,000 times larger than in the intact rock. The greater fluid

velocity in the fractures can be explained by the large permeability of the fractures compared to that of the intact rock. We also observe that the fluid can flow both in the negative and positive directions even within a single fracture that is inclined to its strike with respect to the glacier front, i.e., not parallel to the glacier front. For example, the largest sub-vertical fracture in the model is inclined to the strike at an angle of 34.7° with respect to the y -axis. At one end of this fracture, the vertical fluid velocity is towards the upper surface of the rock and can reach the value of $+5\text{E}-8\text{ m/s}$, although this fracture is totally covered by the glacier at 5900 years. The fact that some fluid in the fracture can flow towards the upper surface can be explained by the non-uniform distribution of the ice sheet loading along the x -axis and the very high permeability of fractures. It should also be noted that in the fractures with a low dip angle (sub-horizontal orientation) the vertical fluid velocity is generally smaller than that in the sub-vertical fractures.

Figure 11 shows variation of the vertical fluid velocity in the largest fracture zone along its length, at a depth of 200 m from the upper surface, at time 5900 years. At this depth the velocity distribution is approximately uniform across the thickness of the fracture. It is apparent from the figure that at this depth the velocity in the fracture remains high and negative at one end of the fracture ($-3\text{E}-8\text{ m/s}$) and positive at another end ($+5\text{E}-8\text{ m/s}$).

Figure 12 shows the vertical displacement or deflection in the rock mass with fracture zones at time 5900 years. The displacement is negative under the glacier, which is indicative of the mechanical compression of the rock, and positive outside the glacier, which is indicative of the conventional heave associated with glacial loading (Walcott, 1970; Selvadurai, 1979, 2009, 2012; Selvadurai and Nguyen, 1995). The maximum negative displacement (-0.076 m) is near the front of the glacier at its initial position. It can be observed that the displacements in the fractured and homogeneous regions of the rock are not very different, i.e., the displacement field is not strongly influenced by the presence of fractures with low deformability properties.

Figure 13 shows variation of the vertical displacement in the rock mass with fracture zones in the cross-sections of the fractured and fracture-free regions $y=6200\text{ m}$ and -3200 m , respectively, at a depth of 200 m below the upper surface, at time 5900 years. The vertical displacement is in fact smaller, in absolute value, in the fractured region of the rock although the difference between the displacements in the fractured and fracture-free regions of the rock is not significant.

Figure 14 shows the mean effective stress $(\sigma'_{xx} + \sigma'_{yy} + \sigma'_{zz})/3$ in the intact part of the rock with fractures at 5900 years. The mean effective stress is mostly compressive but tensile

stresses do occur in the fractured region at the upper surface (dark red patch). The maximum compressive stress occurs near the lower surface of the rock close to the initial location of the ice sheet front. The distinctive feature of the response of the rock with fractures is the existence of tensile stresses near the upper surface between and around the fractures (dark red patch); however, the magnitude of these tensile stresses is smaller than the compressive stress. It can also be observed that in the homogeneous, exterior region of the rock, the stress is entirely compressive. It should be noted that for any failure analysis the HM stress state resulting from glacial loading should be combined with the in-situ geostatic stress, GIA stress (Steffen et al., 2014) and possible tectonic background stresses.

1.10

Figure 15 shows the mean effective stress variation in the intact part of the rock with fracture zones in the cross-sections $y=6200$ and -3200 m corresponding to the fractured and fracture-free regions of the rock respectively, at a depth of 200 m below the upper surface, at time 5900 years. At this depth the mean effective stress in the fractured region of the rock remains tensile and can reach the value of $+0.1$ MPa whereas in the fracture-free region this stress is compressive, approximately equal to -0.2 MPa.

37

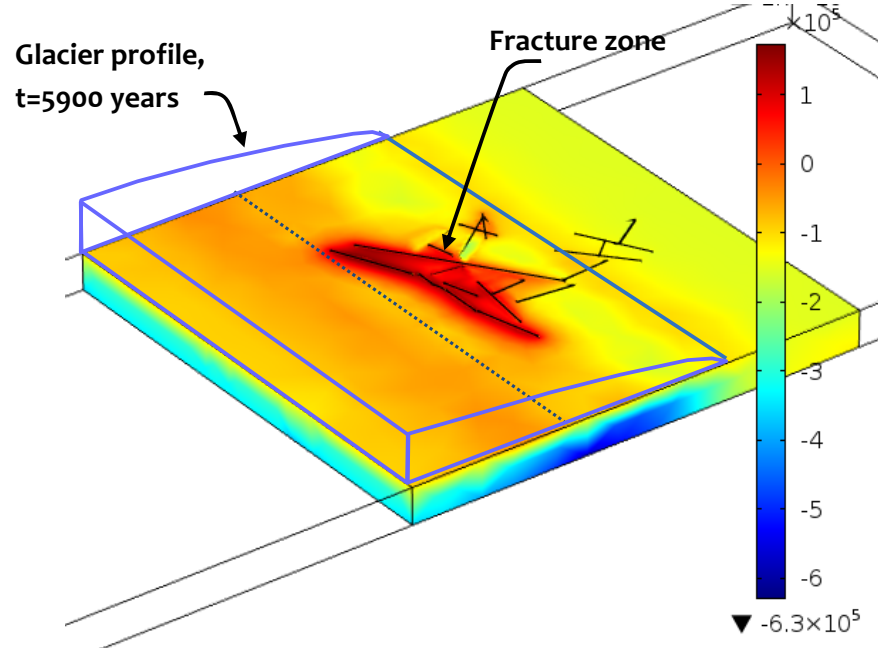


Fig. 14. Distribution of the mean effective stress [Pa] within the intact part of the rock mass with fracture zones at time 5900 years. The rock is subjected to spatially non-uniform fluid pressure and compressive stress.

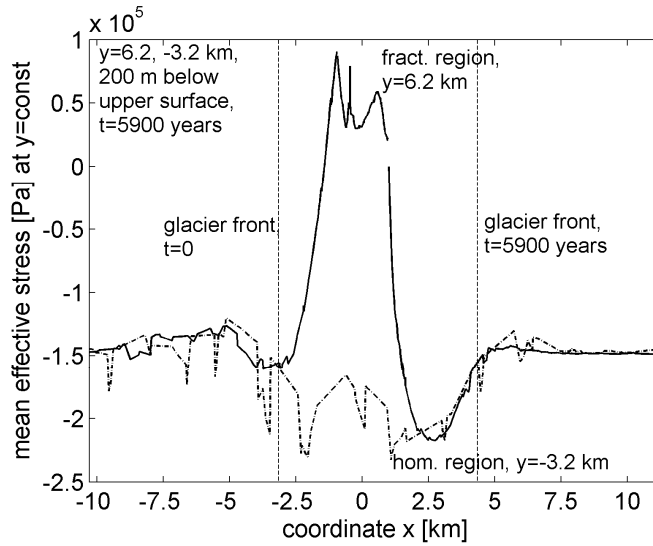


Fig. 15. Variation of the mean effective stress [Pa] in the intact part of the rock mass with fracture zones in the cross-sections of the fractured and homogeneous regions of the rock mass $y=6200$ m and -3200 m respectively, at a depth of 200 m, at time 5900 years.

5.2 Solution of THM problem for “Custom” mesh

In the thermo-hydro-mechanical problem the temperature change caused by glacier advance or growth must be prescribed at the upper surface of the rock. Chan et al. (2005) examined the change in the ground surface temperature through the entire glacial cycle using climate/temperature simulation. From this simulation it was clear that before the arrival of the glacier, the ground surface temperature decreases significantly from $+10^{\circ}\text{C}$ to -25°C . As the glacier gradually occupies the domain of interest, the insulating effect of the ice sheet gradually increases the subglacial temperature from -25°C to 0°C . This complex temperature evolution at the upper surface of the rock mass is simplified in the present work and only a net cool-down from $+10^{\circ}\text{C}$ to 0°C , associated with the glaciation period, is considered. Similar surface temperature evolution was used in the study by Read (2008): the mean annual surface temperature was set to $+7^{\circ}\text{C}$ during non-glacial periods and, to account for glaciation, the mean annual rock mass surface temperature was reduced to 0°C .

In Figures 16–19 we illustrate the response of the rock mass with fracture zones subjected to the glacial load described previously and, in addition, to the effects of cooling associated with the advance of the glacier. The time-dependent fluid pressure, the vertical compressive stress and the temperature change are applied to the upper surface of the rock mass as prescribed by (8), (9) and (11). As indicated previously, the initial or in-situ state is not taken into account in the present study, and therefore, only the surface loading and temperature that correspond to the difference between the current position of the glacier, at

time t , and its initial position are applied to the surface of the rock. The temperature change on the upper surface caused by glacier advance is assumed to have the following form

$$\Delta T(x, y, z^{top}, t) = T_{\max} \left[\frac{H(x, t)}{H_{\max}} - \frac{H(x, 0)}{H_{\max}} \right] \quad (14)$$

where $H(x, t)$ is the **smoothed/approximated** glacier thickness at time t (Appendix A). [The equation (14) takes into account the approximated/smoothed glacier thickness; **the glacier covers the bedrock earlier than it would without the smoothed approximation.**] The maximum temperature change is set equal to $T_{\max} = -10^0\text{C}$ and will be reached at the initial location of the ice sheet front when $t = L/V = 1047000$ years, i.e., when the center of the glacier overruns the model domain. **Since in this study attention is restricted only to a small glacier advance, this time can never be reached during computational simulations, i.e., the glacier motion will be terminated a long time before this time is reached.**

2.11

1.11

Figure 16 shows the temperature change generated within the rock 5900 years after initiation of the glacier motion. The temperature change on the upper surface is prescribed according to (14). The temperature change **under** the glacier reaches the maximum of -0.66^0C at the upper surface of the rock close to the initial location of the ice sheet front, and is **almost** zero beyond the glacier margin. (The current maximum of -0.66^0C is much smaller than $T_{\max} = -10^0\text{C}$ since the center of the glacier is **very far** from the model domain boundaries at time 5900 years.) We observe that the distribution of the temperature through the thickness of the rock mass under the glacier is non-uniform, which implies that **the temperature did not reach the steady state** in 5900 years and at the lower surface of the rock the temperature is still above **the value prescribed at the upper surface.**

Figure 17 shows variation of the temperature change at the upper surface of the rock mass and at a depth of 800 m from the upper surface, at time 5900 years. The dependence of the temperature field on the y -coordinate is only due to a difference in the mesh refinement in the fractured and homogeneous regions, and thus, rather weak. From the figure it is evident that the temperature at a depth of 800 m is much smaller than the prescribed temperature at the upper surface, which suggests that even for such a small glacier speed the steady state was not reached in 5900 years.

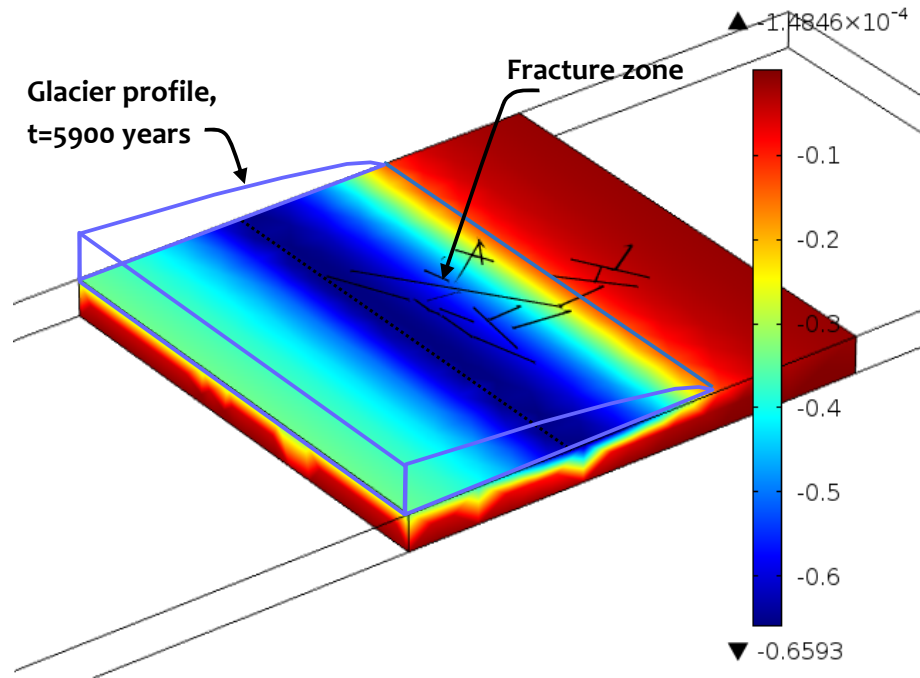


Fig. 16. Temperature change distribution [$^{\circ}\text{C}$] within the rock mass 5900 years after the start of the glacier advance.

40

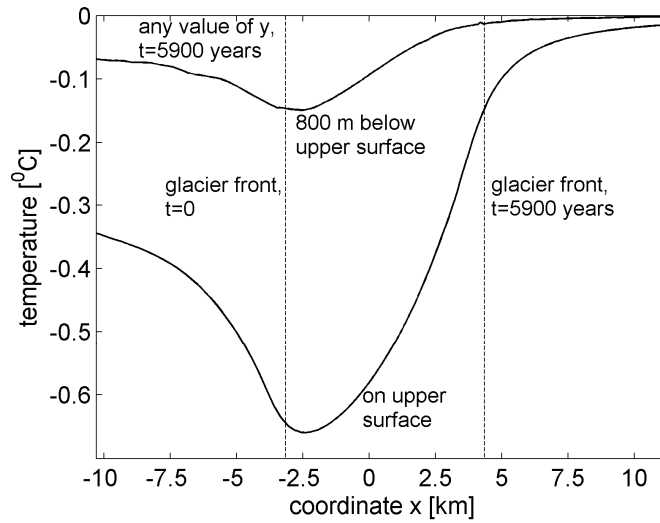


Fig. 17. Temperature change [$^{\circ}\text{C}$] in the rock mass at the upper surface and at a depth of 800 m, at time 5900 years.

Figure 18 shows mean effective stress in the intact part of the rock with fractures at time 5900 years. The rock mass is subjected to the compressive stress, the fluid pressure induced by the glacial load and the temperature field (14) associated with the glacial advance. We note that the compressive mean stress at the lower surface of the rock mass is almost equal to that

in the rock subjected only to the mechanical load and fluid pressure (see Fig. 14). The tensile mean stress, however, which occurs in the fractured region in the vicinity of the upper surface, is increased from 0.15 MPa to 0.28 MPa. In contrast to the effective stress, the vertical fluid velocity is not significantly influenced by the cooling: the velocity field in the rock subjected to the compressive stress, the fluid pressure and the temperature field (14) is almost the same as that in the rock subjected only to the mechanical load and fluid pressure (as shown in Figs. 8–9).

Figure 19 shows variation of the mean effective stress in the intact part of the rock mass with fractures at a depth of 200 m below the upper surface in the cross-sections through the fractured and fracture-free regions $y=6200$ m and -3200 m, respectively, at time 5900 years. At this depth the mean effective stress in the rock of the fracture-free region is compressive, approximately equal to -1.5 MPa, whereas the stress in the intact rock of the fractured region remains tensile, reaching the value of $+1.5$ MPa.

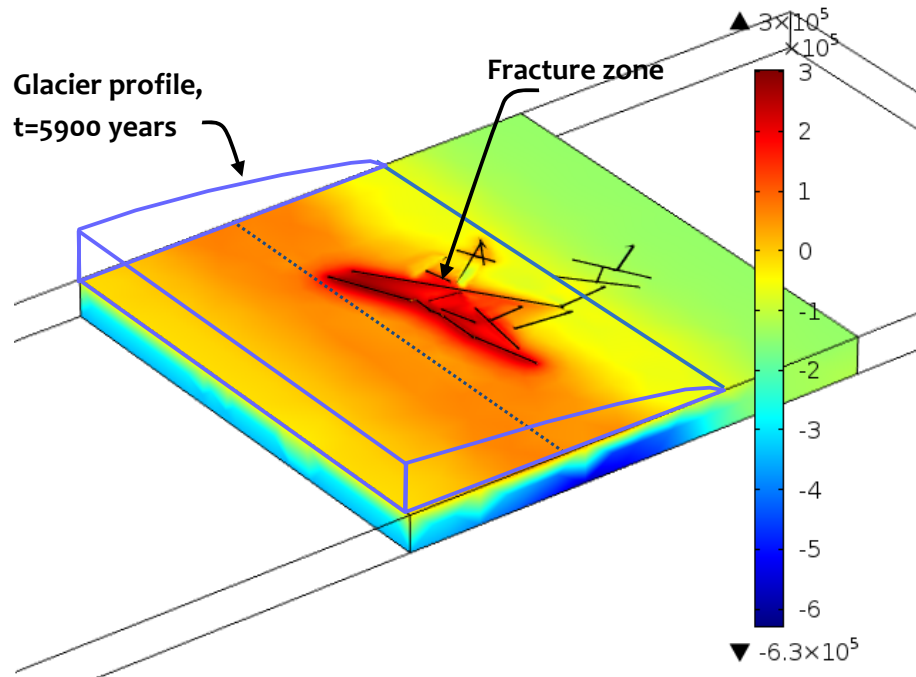


Fig. 18. Distribution of the mean effective stress [Pa] within the intact part of the rock mass with fracture zones at time 5900 years. The rock is subjected to spatially non-uniform fluid pressure, a compressive stress state and a temperature change.

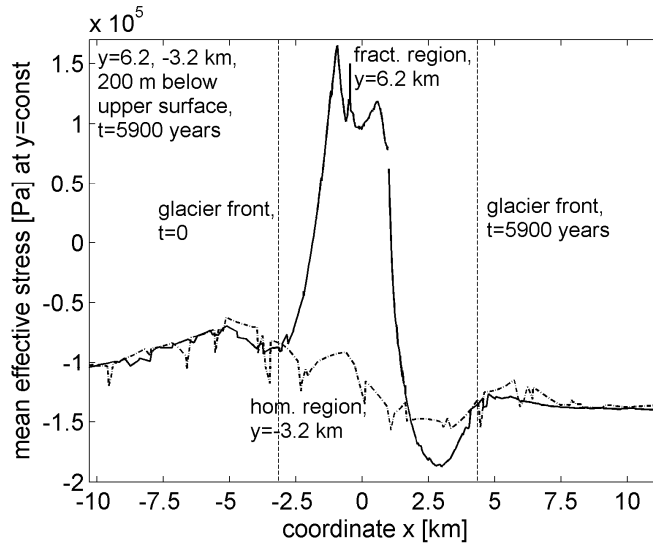


Fig. 19. Variation of the mean effective stress [Pa] in the intact part of the rock mass with fracture zones in the cross-sections $y=6200$ m and -3200 m, corresponding to the fractured and homogeneous regions respectively, at a depth of 200 m, at time 5900 years.

4. Concluding remarks

In the present work, the behavior of a fractured rock mass subjected to advancing glacial loads was analyzed. The glacial load was taken into account by prescribing a spatially and time-dependent compressive stress and fluid pressure on the upper surface of the rock mass. Resulting fluid pressures, vertical fluid velocities, displacements, and mean stress distribution diagrams were obtained through computational simulations that incorporated THM processes. Results were plotted for the specific time of 5900 years during which the glacier advanced across the model domain by a distance of approximately 7500 m.

The computational results show that there is a difference between the fluid pressures at the upper and lower surfaces of the rock mass due to the low permeability of the intact rock. This pressure difference creates a vertical pressure gradient that contributes to the vertical fluid velocity component, which is a major feature of the fluid flow in the present problem. We also observed a difference in the fluid pressure distributions within the fractured region and the surrounding homogeneous region of the rock. In fact, the fluid pressure within the fracture zones and the intact rock in close proximity to the fractures is larger than that in the homogeneous region, located remotely from the fracture zones. This can be attributed to the large permeability of the fractures.

The distribution of the vertical fluid velocity *within the intact part* of the fractured rock is complex. In general, the direction of the fluid velocity is negative (downward) beneath the glacier and positive (upward) beyond the glacier margin. The magnitude of the downward velocity is larger than the upward velocity, which is consistent with the direction associated

with the melt-water flow. As was already noted, between the sub-vertical fractures and near horizontal fractures the vertical fluid velocity in the intact rock is generally smaller than that in the homogeneous region. The vertical fluid velocity *within the fractures* of the rock is about 50,000 times larger than the velocity in the intact rock. The direction of the fluid velocity in the fractures is mainly negative but large velocities in the positive direction can also occur, especially in the sub-vertical fractures that are not parallel to the ice sheet front. The role of the fracture zones and their dominant influence on the fluid flow in the region during a glaciation event is thus confirmed by the present study.

The mean effective stress in the intact part of the rock mass is mostly compressive, but tensile stresses do occur between and around the fractures, at close proximity to the upper surface of the rock. The maximum compressive stress is at the lower surface of the rock at the initial position of the ice sheet front. The glacial loading induces compression of the rock, i.e., negative strain in the direction of the rock thickness. For the situations examined in the paper, this axial compression is relatively uninfluenced by the presence of fracture zones. In addition to the compressive stress and fluid pressure, the given rock mass was subjected to the cooling associated with a glacier advance. Since the present study considers a small glacier advance of only 7500 m, the associated temperature change is also small, only -0.66°C . It was observed that even for this small temperature change, the mean effective tensile stress noticeably increased at the upper surface of the rock between and around the fractures. However, the effect of the cooling on the vertical fluid velocity distribution in the fractured rock was small. These results suggest that the hydro-thermal interaction in the present problem can be neglected, but the effect of cooling on the stress distribution in the intact part of the rock (thermo-mechanical interaction) should be given greater consideration.

2.12

This study is closely related to the work performed earlier by Chan et al. (2005) and Chan and Stanchell (2005, 2008) in that it also examines the effect of the glacial loading on the behavior of fractured bedrock. In their work the rock was modelled as a thermo-poroelastic medium and contained 3D (but narrow) fracture regions, which were also assumed to be thermo-poroelastic. The novelty of the present model is the use of a quite complicated fracture network consisting of 21 fractures whereas only 5 fractures were included into the models described in the papers by Chan et al. (2005) and Chan and Stanchell (2005). The HWMO report by Chan and Stanchell (2008) deals with a more complex fracture network consisting of 19 fractures but the fracture thickness was set to 20 m, whereas in the present work it is 10 m, which implies greater geometry and mesh complexity. In addition, in the present study the focus is on the transient response caused by highly non-uniform and moving

1.12

glacial loading acting on the surface of the bedrock. This loading is directly linked to the specified glacier velocity and profile. Another novelty of this work is investigation of the use of a commercially available finite element program, which can reduce the efforts of the users in solving the present problem with the finite element method.

Computational modeling of fractured rock regions that accounts for THM processes is an essential tool for examining the response of rock masses at time scales relevant to glaciation scenarios. The computational approach allows the examination of the relative importance of components in the THM model and the study of their influence on both the intact rock and the fracture zones at time scales relevant to glaciation scenarios and ultimately to deep geologic disposal concepts. In the modeling considered in this paper both the fracture zones network and the intact rock are assumed to be sessile. The modeling can be extended to include: activation of faults, e.g., in a combined analysis with large scale models of GIA;

1.12

natural hydraulic heterogeneities of the geologic media (Selvadurai and Selvadurai, 2010, 2014), particularly, at close proximity to the fracture surfaces; stress-induced alterations of intact permeability (Selvadurai and Glowacki, 2008; Selvadurai et al., 2011; Massart and Selvadurai, 2012, 2014) and alterations to fracture permeabilities during glacial loadings (Nguyen and Selvadurai, 1998; Selvadurai and Yu, 2005; Selvadurai, 2014). These effects can have an important influence on groundwater flow patterns in the domain. The information on the influences of stress states on permeability evolution in fractures is particularly scant and in a detailed analysis relevant to a deep geologic repository setting this aspect needs to be considered. Also implicit in the study is the absence of both radiogenic and geothermal heating effects; the influences of the latter could be important on the time scale of a glaciation event.

Appendix A.

The initial position of the glacier can be described by the function $H(X)$, where H is the thickness of the glacier and X is the distance from the center of the glacier (the datum point). The function $H(X)$ satisfies $H(0) = H_{\max}$ and $H(L) = 0$, where H_{\max} is maximum thickness of the glacier and L is the distance from the center to the glacier front.

The glacier has accumulation and ablation zones. For simplicity, we assume that the net thickness of ice added to the surface each year in the accumulation zone is equal to the net thickness of the ice lost each year in the ablation zone. Owing to this assumption, the accumulation and ablation zones have equal lengths, $L/2$. In this case, the profile of the glacier in the steady state can be obtained as (Paterson, 1972)

$$H(X) = 2^{1/8} H_{\max} \left(\frac{L-X}{L} \right)^{1/2}, \text{ in the ablation zone } L/2 < X < L$$

$$\left(\frac{H(X)}{H_{\max}} \right)^{8/3} + 2^{1/3} \left(\frac{X}{L} \right)^{4/3} = 1, \text{ in the accumulation zone } 0 < X < L/2 \quad (\text{A1})$$

Knowing the velocity of the ice sheet V and the initial profile, given by (A1), we can obtain the equation for the glacier profile in the ablation zone as a function of time:

$$H(X, t) = 2^{1/8} H_{\max} \left(\frac{L-X+Vt}{L} \right)^{1/2}, \text{ in the ablation zone } L/2 < X-Vt < L \quad (\text{A2})$$

The profile of the ice sheet (A2) is indicated in Figure 3. The approximation to the parabolic profile (A2) is evaluated by the formula

1.13

$$H(x, t) = 2^{1/8} H_{\max} \left(\frac{-x[m] - 3159 + Vt}{L} \right)^{1/2}; \quad x - Vt \leq -10759 \text{ m}$$

$$H(x, t) = A_3(x - Vt)^3 + A_2(x - Vt)^2 + A_1(x - Vt) + A_0; \quad -10759 \leq x - Vt \leq -3759 \text{ m}$$

$$H(x, t) = 200 F(x, t); \quad x - Vt \geq -3759 \text{ m} \quad (\text{A3})$$

$$F(x, t) = \frac{1}{2} + \frac{1}{\pi} \arctan\left(\frac{1}{1200}(-x[m] - 4159 + Vt)\right)$$

45

Here x is the coordinate of the model domain. The function $F(x)$ smoothly changes from 1 to 0 as x increases and it serves to smooth out the sharp corner of (A2). The coefficients $A_0 - A_3$ in the cubic polynomial are selected to allow continuity with the parabolic function and its first derivative at $x - Vt = -10759$ m and, at the same time, continuity with the function F and its first derivative at $x - Vt = -3759$ m.

Code Availability

The source files used in the computations performed in connection with this paper can be found at the following links:

https://www.dropbox.com/s/83b1gcruk47sib/glacierproblem_mesh158728_noheat.mph?dl=0
https://www.dropbox.com/s/oy7fo28303td1lf/glacierproblem_mesh158728_withheat.mph?dl=0.

Acknowledgements. The work described in this paper was initiated through the research support provided by the Nuclear Waste Management Organization, Ontario and through a Discovery Research Grant awarded to APSS by the Natural Sciences and Engineering Research Council (NSERC) of Canada. A co-author (PAS) is grateful to NSERC for a Post Graduate Scholarship, which enabled him to participate in the research.

Disclaimer: The use of the computational code COMSOL Multiphysics® is for demonstrational purposes only. The authors neither advocate nor recommend the use of the code without conducting suitable validation procedures to test the accuracy of the code in a rigorous fashion.

References

- Ahlkrona, J., Kirchner, N., Lotstedt, P.: Accuracy of the zeroth- and second- order shallow ice approximation – numerical and theoretical results, *Geosci. Model Dev.*, 6, 2135–2152, doi:10.5194/gmd-6-2135-2013, 2013.
- Alonso, E.E., Alcoverro, J., Coste, F., Malinsky, L., Merrien-Soukatchoff, V., Kadin, I., Nowak, T., Shao, H., Nguyen, T. S., Selvadurai, A. P. S., Armand, G., Sobolik, S. R., Itamura, M., Stone, C. M., Webb, S. W., Rejeb, A., Tijani, M., Maouche, Z., Kobayashi, A., Kurikami, H., Ito, A., Sugita, Y., Chijimatsu, M., Borgesson, L., Hernelind, J., Rutqvist, J., Tsang, C.-F. and Jussila, P.: The FEBEX benchmark test: case definition and comparison of behavior approaches, *Int. J. Rock Mech. Min. Sci.*, 42, 611–638, 2005.
- Aschwanden, A., Blatter, H.: Mathematical modeling and numerical simulation of polythermal glaciers. *J. Geophys. Res.* 114, F01027, doi: 10.1029/2008JF001028, 2009.
- Bangtsson, E., Lund, B.: A comparison between two solution techniques to solve the equations of glacially induced deformation of an elastic Earth, *Int. J. Num. Meth. Eng.*, 75, 479–502, 2008.
- Biot, M.A.: General theory of three-dimensional consolidation, *J. Appl. Phys.*, 12, 155–164, 1941.
- Booker, J.R., Savvidou, C.: Consolidation around a point heat source, *Int. J. Num. Anal. Meth. Geomech.*, 9, 173–184, 1985.
- Boulton, G.S., Caban, P.: Groundwater flow beneath ice sheets: part II – its impact on glacier tectonic structures and moraine formation, *Quaternary Sci. Rev.*, 14, 563–587, 1995.
- Boulton, G.S., Caban, P., Gijssels, K.: Groundwater flow beneath ice sheets: part I – large scale patterns, *Quaternary Sci. Rev.*, 14, 545–562, 1995.
- Chan, T., Stanchell, F.W.: Subsurface hydro-mechanical (HM) impacts of glaciation: sensitivity to transient analysis, HM coupling, fracture zone connectivity and model dimensionality, *Int. J. Rock Mech. Min. Sci.*, 42, 828–849, 2005.
- Chan, T., Stanchell, F.W.: DECOVALEX THMC TASK E – Implications of Glaciation and Coupled Thermo-hydro-mechanical Processes on Shield Flow System Evolution and Performance Assessment, NWMO TR-2008-03, Nuclear Waste Management Organization, Toronto, ON, Canada, 2008.

- Chan, T., Christiansson, R., Boulton, G.S., Ericsson, L.O., Hartikainen, J., Jensen, M.R., Mas Ivars, D., Stanchell, F.W., Vistrand, P., Wallroth, T.: DECOVALEX III BMT 3/BENCHPAR WP4: The thermo-hydro-mechanical responses to a glacial cycle and their potential implications for deep geological disposal of nuclear fuel waste in a fractured crystalline rock mass, *Int. J. Rock Mech. Min. Sci.*, 42, 805–827, 2005.
- Chapman, N.A., McKinley, I.G.: *The Geological Disposal of Nuclear Waste*, John Wiley, New York, 280 pp., 1987.
- Dickson, M. H., Fanelli, M. (Eds.): *Geothermal Energy*, John Wiley, New York, 1995.
- Dietrich, R., Ivins, E.R., Casassa, G., Lange, H., Wendt, J., Fritsche, M.: Rapid crustal uplift in Patagonia due to enhanced ice loss, *Earth Planet. Sci. Lett.*, 289, 22–29, 2010.
- Erhel, J., De Dreuzy, J.-R., Poirriez, B.: Flow simulation in three-dimensional discrete fracture networks, *SIAM J. Sci. Comput.*, 31, 2688–2705, 2009.
- Gomez, N., Pollard, D., Mitrovica, J.X.: A 3-D coupled ice sheet-sea level model applied to Antarctica through the last 40 ky, *Earth Planet. Sci. Lett.*, 384, 88–99, 2013.
- Graf, T., Therrien, R.: A method to discretize non-planar fractures for 3D subsurface flow and transport simulations, *Int. J. Num. Meth. Fl.*, 56, 2069–2090, 2008.
- Guvanasen V., Chan, T.: Three-dimensional numerical model for thermo-hydro-mechanical deformation with hysteresis in a fractured rock mass, *Int. J. Rock Mech. Min. Sci.*, 37, 89–106, 2000.
- Hambrey, M. J., Murray, T., Glasser, N.F., Hubbard, A., Hubbard, B., Stuart, G., Hansen, S., Kohler, J.: Structure and changing dynamics of a polythermal valley glacier on a centennial timescale: Midre Lovenbreen, Svalbard, *J. Geophys. Res.*, 110, F01006, doi: 10.1029/2004JF000128, 2005.
- Hamiel, Y., Lyakhovsky, V., Agnon, A.: Rock dilation, nonlinear deformation, and pore pressure change under shear, *Earth Planet. Sci. Lett.*, 237, 577–589, 2005.
- Headley, R.M., Roe, G., Hallet, B.: Glacier longitudinal profiles in regions of active uplift, *Earth Planet. Sci. Lett.*, 317, 354–362, 2012.
- Juanes, R., Samper, J., Molinero, J.: A general and efficient formulation of fractures and boundary conditions in the finite element method, *Int. J. Num. Meth. Eng.*, 54, 1751–1774, 2002.
- Khalili, N., Selvadurai, A.P.S.: A fully coupled constitutive model for thermo-hydro-mechanical analysis in elastic media with double porosity, *Geophys. Res. Lett.*, 30, SDE 7-1–7-5, 2003.

- Lachenburch, A.: Friction heating, fluid pressure and the resistance to fault motion, *J. Geophys. Res.*, 85, 6097–6112, 1980.
- Laughton, A.S., Roberts, L.E.J., Wilkinson, D., Gray, D.A., (Eds.): *The Disposal of Long-Lived and Highly Radioactive Wastes*, Proceedings of a Royal Society Discussion Meeting, Royal Society, London, 189 pp., 1986.
- Marshall, S.J.: Recent advances in understanding ice sheet dynamics, *Earth Planet. Sci. Lett.*, 240, 191–204, 2005.
- Massart, T.J. and Selvadurai, A.P.S.: Stress-induced permeability evolution in a quasi-brittle geomaterial, *J. Geophys. Res.*, 117, B07207, doi: 10.1029/2012JB009251, 2012.
- Massart, T.J. and Selvadurai, A.P.S.: **Computational modelling of crack-induced permeability evolution in granite with dilatant cracks**, *Int. J. Rock Mech. Min. Sci.*, 70, 593–604, 2014.
- McTigue, D.F.: Thermoelastic response of fluid-saturated porous rock, *J. Geophys. Res.*, 91, 9533–9542, 1986.
- Najari, M., Selvadurai, A.P.S.: Thermo-hydro-mechanical response of granite to temperature changes, *Env. Earth Sci.*, 72, 189–198, doi: 10.1007/s12665-013-2945-3, 2014.
- Ng, K.L.A., Small, J.C.: Behavior of joints and interfaces subjected to water pressure, *Comput. Geotech.*, 20, 71–93, 1997.
- Nguyen, T.S., Selvadurai, A.P.S.: Coupled thermal-mechanical-hydrological behaviour of sparsely fractured rock: implications for nuclear fuel waste disposal, *Int. J. Rock Mech. Min. Sci.*, 32, 465–479, 1995.
- Nguyen, T.S., Selvadurai, A.P.S.: A model for coupled mechanical and hydraulic behaviour of a rock joint, *Int. J. Num. Anal. Meth. Geomech.*, 22, 29–48, 1998.
- Nguyen, T.S., Selvadurai, A.P.S., Armand, G.: Modelling the FEBEX THM experiment using a state surface approach, *Int. J. Rock Mech. Min. Sci.*, 42, 639–651, 2005.
- Nielsen, K., Khan, S.A., Kosgaard, N.J., Kjær, K.H., Wahr, J., Bevis, M., Stearns, L.A., Timm, L.H.: Crustal uplift due to ice mass variability on Upernavik Isstrøm, west Greenland, *Earth Planet. Sci. Lett.*, 353/354, 182–189, 2012.
- Noorishad, J., Tsang, C.-F., Witherspoon, P.A.: Coupled thermo-hydraulic-mechanical phenomena in saturated fractured porous rocks: numerical approach, *J. Geophys. Res.*, 89, 10365–10373, 1984.
- Paterson, W.S.B.: Laurentide ice sheet: estimated volumes during late Wisconsin, *Rev. Geophys. Space Phys.* 10, 885–917, 1972.
- Person M., Bense, V., Cohen, D., Banerjee, A.: Models of ice-sheet hydrogeologic interactions: a review, *Geofluids*, 12, 58–78, 2012.

- Picasso, M., Rappaz, J., Reist, A., Funk, M., Blatter, H.: Numerical simulation of the motion of a two-dimensional glacier, *Int. J. Num. Meth. Eng.*, 60, 995–1009, 2004.
- Read, R.: Developing a reasoned argument that no large-scale fracturing or faulting will be induced in the host rock by a deep geological repository, NWMO TR-2008-14, Nuclear Waste Management Organization, Toronto, ON, Canada, 2008.
- Rice, J.R.: Heating and weakening of faults during earthquake slip, *J. Geophys. Res.*, 111, 1–29, 2006.
- Rice, J. R., Cleary, M.P.: Some basic stress-diffusion solutions for fluid saturated elastic porous media with compressible constituents, *Rev. Geophys. Space Phys.*, 14, 227–241, 1976.
- Rutqvist, J., Wu, Y.-S., Tsang, C.-F., Bodvarsson, G.: A modeling approach for analysis of coupled multiphase fluid flow, heat transfer, and deformation in fractured porous rock, *Int. J. Rock Mech. Min. Sci.*, 39, 429–442, 2002.
- Rutqvist, J., Chijimatsu, M., Jing, L., Millard, A., Nguyen, T.S., Rejeb, A., Sugita, Y., Tsang, C.-F.: A numerical study of THM effects on the near-field safety of a hypothetical nuclear waste repository – BMT1 of the DECOVALEX III project. Part 3: Effects of THM coupling in sparsely fractured rocks, *Int. J. Rock Mech. Min. Sci.*, 42, 745–755, 2005.
- Sasgen, I., van den Broeke, M., Bamber, J.L., Rignot, E., Sørensen, L.S., Wouters, B., Martinec, Z., Velicogna, I., Simonsen, S.B.: Timing and origin of recent regional ice-mass loss in Greenland, *Earth Planet. Sci. Lett.*, 333/334, 293–303, 2012.
- Selvadurai, A.P.S.: Elastic Analysis of Soil-Foundation Interaction: Vol. 17, *Developments in Geotechnical Engineering*, Elsevier Sci. Publ. Co., Amsterdam, 1979.
- Selvadurai, A.P.S., (Ed.): *Mechanics of Poroelastic Media*, Kluwer Academic Publishers, Dordrecht, 1996.
- Selvadurai, A.P.S.: Heave of a surficial rock layer due to pressures generated by injected fluids, *Geophys. Res. Lett.*, 36, L14302, doi: 1029/2009GL038187, 2009.
- Selvadurai, A.P.S.: A geophysical application of an elastostatic contact problem, *Math. Mech. Solids.*, 18, 192–203, doi:10.1177/1081286512462304, 2012.
- Selvadurai, A.P.S.: Normal stress-induced permeability hysteresis of a fracture in a granite cylinder, *Geofluids*, online first, doi: 10.1111/gfl.12107, 2014.
- Selvadurai, A.P.S. and Głowacki, A.: Evolution of permeability hysteresis of Indiana Limestone during isotropic compression, *Ground Water*, 46, 113–119, 2008.
- Selvadurai, A.P.S., Nguyen, T.S.: Computational modeling of isothermal consolidation of fractured porous media, *Comput. Geotech.*, 17, 39–73, 1995.

- Selvadurai, A.P.S., Nguyen, T.S.: Scoping analyses of the coupled thermal-hydrological-mechanical behaviour of the rock mass around a nuclear fuel waste repository, *Eng. Geol.*, 47, 379–400, 1997.
- Selvadurai, A.P.S., Nguyen, T.S.: Mechanics of fluid transport in a degradable discontinuity, *Eng. Geol.*, 53, 243–249, 1999.
- Selvadurai, A.P.S. and Selvadurai, P.A.: Surface permeability tests: Experiments and modelling for estimating effective permeability, *P. Roy. Soc. Lond. A Math. Phys.*, 466, 2819–2846, 2010.
- Selvadurai, P.A. and Selvadurai, A.P.S.: On the effective permeability of a heterogeneous porous medium: the role of the geometric mean, *Phil. Mag.*, 94, 2318–2338, doi: 10.1080/14786435.2014.913111, 2014.
- Selvadurai, A.P.S., Shirazi, A.: Mandel-Cryer effects in fluid inclusions in damage susceptible poro-elastic media, *Comput. Geotech.*, 37, 285–300, 2004.
- Selvadurai, A.P.S., Suvorov, A.P.: Boundary heating of poro-elastic and poro-elasto-plastic spheres, *P. Roy. Soc. Lond. A Math. Phys.*, 468, 2779–2806, doi: 10.1098/rspa.2012.0035, 2012.
- Selvadurai, A.P.S., Suvorov, A.P.: Thermo-poromechanics of a fluid-filled cavity in a fluid-saturated porous geomaterial, *P. Roy. Soc. Lond. A Math. Phys.*, 470, 20130634, doi:10.1098/rspa.2013.0634, 2014.
- Selvadurai, A.P.S., Yu, Q.: Mechanics of a discontinuity in a geomaterial, *Comput. Geotech.*, 32, 92–106, 2005.
- Selvadurai, A.P.S., Yue, Z.Q.: On the indentation of a poroelastic layer, *Int. J. Num. Anal. Meth. Geomech.*, 18, 161–175, 1994.
- Selvadurai, A.P.S., Hu, J., Konuk, I.: Computational modelling of frost heave induced soil-pipeline interaction, I. Modelling of frost heave, *Cold Reg. Sci. Technol.*, 29, 215–228, 1999a.
- Selvadurai, A.P.S., Hu, J., Konuk, I.: Computational modelling of frost heave induced soil-pipeline interaction, II. Modelling of experiments at the Caen Test Facility, *Cold Reg. Sci. Technol.*, 29, 229–257, 1999b.
- Selvadurai, A.P.S., Letendre, A. and Hekimi, B.: Axial flow hydraulic pulse testing of an argillaceous limestone, *Env. Earth Sci.*, 64, 2047–2085, doi: 10.1007/s12665-011-1027-7, 2011.
- Stanislavsky, E., Garven, G.: A theoretical model for reverse water-level fluctuations induced by transient permeability in thrust fault zones, *Earth Planet. Sci. Lett.*, 210, 579–586, 2003.

- Steffen, H., Kaufmann, G., Wu, P.: Three-dimensional finite element modeling of the glacial isostatic adjustment in Fennoscandia, *Earth Planet. Sci. Lett.*, 250, 358–375, 2006.
- Steffen, R., Wu, P., Steffen, H., Eaton, D.W.: The effect of earth rheology and ice sheet size on fault slip and magnitude of postglacial earthquakes, *Earth Planet. Sci. Lett.*, 388, 71–80, 2014.
- Stucki, M.D., Schlunegger, F.: Identification of erosional mechanisms during past glaciations based on a bedrock surface model of the central European Alps, *Earth Planet. Sci. Lett.*, 384, 57–70, 2013.
- Sykes, J.F., Normani, S.D., Yin, Y.: Hydrogeologic modelling, Technical Report NWMO DGR-TR-2011-16 R000, Nuclear Waste Management Organization, Toronto, ON, Canada, 2011.
- Thoma, M., Grosfeld, K., Barbi, D., Determann, J., Goeller, S., Mayer, C., Pattyn, F.: Rimbay – a multi-approximation 3D ice-dynamics model for comprehensive applications: model description and examples, *Geosci. Model Dev.*, 7, 1–21, doi:10.5194/gmd-7-1-2014, 2014.
- Tsang, Y.W., Birkholzer, J.T., Mukhopadhyay, S.: Modeling of thermally driven hydrological processes in partially saturated fractured rock, *Rev. Geophys.*, 47, 1–30, 2009.
- Walcott, R.I.: Flexural rigidity, thickness and viscosity of the lithosphere, *J. Geophys. Res.*, 75, 3941–3954, doi:10.1029/JB075i020p03941, 1970.
- Weertman, J.: General theory of water flow at the base of a glacier or ice sheet, *Rev. Geophys. Space Phys.*, 10, 287–333, 1972.