

Dear Reviewer 1,

We would like to thank you for your careful and constructive review of our paper. We have tried to follow all your requests as best as we could and believe that it helped to substantially improve the manuscript. A point by point explanation follows below for your comments:

Comments

- Page 7153, line 16: please correct: “observations measurements”

Reply: corrected

- Page 7157: It is not clear the difference between ALARO and ALADIN. Please be more explicit

Reply: In the revised manuscript the description of ALARO and ALADIN was adapted to make this difference more explicit.

The ALADIN model is the LAM version of the Action de Recherche Petite Echelle Grande Echelle Integrated Forecast System (ARPEGE-IFS) (Bubnová et al., 1995), developed by MétéoFrance and the ECMWF. In the ALARO model, ALADIN is updated with the ALARO-0 physics package. This parameterisation has been designed to run at resolutions from the mesoscale to the cloud-resolving scales in a scale-aware manner, based on the modeling approach of the Modular Multiscale Microphysics and Transport (3MT) cloud and precipitation scheme of Gerard and Geleyn (2005); Gerard (2007); Gerard et al. (2009) and has been validated up to a spatial resolution of 4 km for NWP (Gerard et al., 2009, De Meutter et al. 2015) and climate (Hamdi et al., 2012, 2014b; De Troch et al., 2013). The ALARO-0 physics package is coupled to the dynamics via a physic-dynamics interface based on a flux-conservative formulation of the equations proposed by Catry et al. (2007). The ALARO model is running operationally at the Royal Meteorological Institute (RMI) of Belgium as well as in a number of other countries of the ALADIN and HIRLAM consortia.

- Page 7159, line 7 $(y_0^t - H(x_b^0)) \rightarrow [y_0^t - H(x_b^0)]$ it is not clear the meaning of the subscript 0 in the y vector

Reply: the subscript o stands for observation, as a stands for analysis and b for background. To avoid confusion the superscript 0 was changed to t0. The text is adapted to make this more clear:

“... where subscripts a, b, o indicate the analysis, background and observations, such that the analysis model state ...”

- Page 7160, line 24: Why this values: “1 K for 2 m temperature and 10 % for 2 m relative humidity” and for : “2 K for the background errors of Ts and T2 and $0.1 \times (wfc - w wilt)$ for Wg and W2”

Reply: These values are the same as in Mahfouf et al. (2009). The text is adapted to make this more clear: **The EKF for soil analysis has been tested using the same setup and covariance values as in Mahfouf et al. (2009).**

- Page 7162, lines 12/13: “runs from 12:00 to 18:00 UTC”, every days?

Reply: We have checked the presence of oscillations on five random days throughout the month and found oscillations on each of these days in various locations. However, it is not feasible to check this for every day of the month, due to a lack of storage resources. In order to check for oscillations the output fields should be stored at each timestep, which requires a lot of storage.

- Page 7163, paragraph lines 5-20: Question: The noisy signal in the Jacobian values appear only in the terms related to the soil water content or also in the terms related to the soil temperature? The figure 4 only show the noisy signal for the derivatives with respect to w_g and w_2 , but for the terms with respect to T_s and T_2 the period shown is outside the window were the noisy signal appear. In my opinion the authors should clarify this question in the text.

Reply: The noisy signal in the Jacobian values appears in terms related to soil water content as well as terms related to the soil temperature. Figures 1 and 2 added here below show the noisy Jacobians related to soil temperature to the reviewer. The following was added to the revised manuscript to clarify this: **Similar oscillations occur for the Jacobian values related to soil temperature (not shown) for this case.**

- Page 7163, line 20: The expression “(not shown)” should come after “the coupled case”

Reply: corrected

- Page 7165, line 16: The aim of the filter is to cured only the impact of the oscillations that occurred at R_i critical values or also the oscillations that are due to non-linearities for SWI-values close to 0?

Reply: The filter does not differentiate between oscillations initiated by different mechanisms, therefore it will filter oscillations that occur at the R_i critical values as well as oscillations due to SWI-values close to 0. In addition it might even filter oscillations caused by other mechanisms, like the oscillations due to rainy conditions for the coupled approach as described by Balsamo et al. (2004). In the revised manuscript a sentence about this was added to the explanation of the filter:

The filter does not differentiate between oscillations initiated by different mechanisms. Therefore it will filter oscillations due to the critical R_i values and SWI-values close to zero but also for example oscillations due to rainy conditions for the coupled approach as described by Balsamo et al. (2004).

- Page 7166, line 6: Which case? The period, as well the time-steps of the runs should be given.

Reply: we did not intend a particular case, but rather the comparison between the reference approach and the filtered approach for the same periods, which are indicated each time in the text. We now write in the revised manuscript: **In the following part, the filtering approach FIL is compared to the reference approach without filtering ...**

- Page 7167, line 12/13: 6 July or 2 July? In the figure caption it is indicated the 2 July.

Reply: corrected, it should be 2 July

- Page 7168, line 10: parturbation → perturbation

Reply: corrected

- Page 7168, lines 18 and 19: should be Figure 9

Reply: corrected

- Page 7168, line 23/24: the following conclusion: “(...) a Jacobian calculated with a positive perturbation has the same size but an opposite sign as the Jacobian value calculated with a negative perturbation.” seems to me a little bit strange and in contradiction against the values of H^+ - H^- shown in figure 8. Please confirm the result and if it so, try to explain it.

Reply: We agree that this conclusion is a bit too strong. The results shown in figure 10b as well as figure 8 have been verified and are correct. However for most points in this plot there is still a large deviation from the diagonal, resulting in the larger values for H^+ - H^- than would be expected if the points are all on the diagonal. To try to explain why the points follow more or less the opposite diagonal would be a research in itself. It could point to the presence of non-linear effects that are triggered in the case of too small perturbations, but this is outside the scope of this paper. For other perturbation sizes (like in figure 10d) the results are as expected, so the results 10b are an artefact of this particular perturbation size. The conclusion mentioned above was removed in the revised manuscript and replaced by the following:

The points of the coupled EKF follow slightly the opposite diagonal. It cannot be excluded that some non-linear feedback effects between the surface and the atmosphere are triggered here but this is out of scope of the present paper.

- Page 7169, line 11: Should be Figure 10

Reply: corrected

- Page 7172, line 26. Do you have testes some values for the B components?

Reply: We used the values for the B components that were suggested in Mahfouf et al. (2009). The hypothesis that other values for these B components could reduce the larger increment values, has not been tested yet. Therefore we remove this sentence in the revised manuscript and add a sentence about this in the conclusions:

The results also depend on the choice of the background and error covariance matrices values. In this paper we used the values proposed by Mahfouf et al.(2009). It could be interesting to compare the increments and forecast scores for different values of these covariance matrices.

- Page 7173, line 4/5: “The larger increment for FIL on 14 July corresponds to a heavy precipitation event in the region”. The authors should try to justify why sometimes occur such strongly differences between REF and FIL.

Reply: An explanation was added to the revised manuscript: **The large increment for FIL on 14 July corresponds to a heavy precipitation event in the region. In the second half of the month the increments for FIL are often larger than those for REF. It is easily explained by the evolution of the SWI values for W2 (not shown). On the 9th of July the negative increment of REF is much larger than that of FIL. In FIL the noise filtering in the Jacobian prevents the large negative increment. This results in a negative SWI-value for REF, while the SWI value of FIL is just above zero. As a consequence FIL remains sensitive to increments, while in REF the increments for W2 remain near zero as long as the SWI value is negative. The heavy precipitation event of 14 July brings the SWI value of REF above zero again, but on 16 and 19 July this results in a strong negative W2 increment. After that the SWI value of REF remains below zero most of the time, while the SWI value of FIL is positive and thus FIL has larger increments in this period.**

The corresponding figure (Fig. 3) is added below for the reviewer.

- line 18/19: “We tested this EKF with the assimilation of T 2 m and RH 2 m observations to correct errors in soil moisture and soil temperature”. This comment should also have been spelled out previously, may be in the §3.

Reply: A sentence about this was added in §3: **Observations of T2m and RH2m are assimilated to correct errors in soil moisture and soil temperature.**

References

- Page 7175: the two first references are equal.

Reply: corrected

Figures

- Figure 1. As I understand in the offline set-up the runs of the ALORO Model were coupled to the surfex. If so, the figure may be changed.

Reply: This is a good remark. The difference between the *coupled* and the *offline* approach only relates to the way the Jacobian is calculated, not the actual forecast. In what we call the *coupled* approach, there is a two-way coupling between ALARO and SURFEX (at each timestep the two models exchange atmospheric forcing and surface fluxes) while in the *offline* approach there is only a one-way coupling between ALARO and SURFEX (ALARO provides the forcing to SURFEX, but there is no feedback from SURFEX to ALARO). In practice the *offline* approach uses atmospheric forcing that was calculated in a coupled ALARO-SURFEX forecast from the previous assimilation cycle. During the *offline run* only the SURFEX model is run and the previously stored atmospheric forcing is used as input for the SURFEX run. Since SURFEX is run without ALARO in the *offline* case, there can be no feedback from SURFEX to ALARO. Figure 1 has been changed in the revised manuscript to explain this more clearly. The text at the beginning of section 2 was adapted in the revised manuscript:

When SURFEX is coupled to the atmospheric model, they exchange fluxes and forcing at every timestep. SURFEX can also be used in offline mode, i.e. without coupling to an atmospheric run. In offline mode ALARO provides hourly forcing for SURFEX, but there is no feedback from SURFEX to ALARO. The difference between the coupled and offline approach is shown in figure 1.

Also the caption of figure 1 was adapted:

Schematic overview of the coupled and offline set-ups, used for the perturbed runs of the EKF.

- Figure 2. Figure 2 might be more informative (countries, lat / long)

Reply: Lat, lon and country for each location have been added to the figure caption: **The operational 4km ALARO-Belgium domain. The indicated locations will be used in the following sections. Beitem: 50.905°N, 3.123°E (Belgium). Location A: 50.534°N, 4.497°E (Belgium). Location B: 52.092°N, 9.488°E (Germany). Location C: 52.082°N, 9.722°E (Germany)**

- Figure 6 : about the colour-scale: for the analysis in the text, the 0.0 should be in the centre of a class. The label does not indicate it, but maybe it's just a label error. If so, please correct it, if not it will be better to redo the figure.

Reply: the colour-scale was adapted so that the 0.0 is in the centre of the class

- Figure 8 The conclusion: “The offline approach has a smaller optimal perturbation size (black lines) and smaller jacobian values (red lines)” should not be indicated in the figure caption. on the other hand, the caption may indicates the differences between the top and the bottom figures

Reply: corrected. The sentence has been removed. The difference between the top and bottom figures was added: **Comparison of the optimal perturbation size for the offline (top) and coupled (bottom) approach.**

- Figure 10 ↔ Figure 9 (Figure 9 is first refereed in page 7169, Figure 10 in page 7168)

Reply: corrected

- Figure 10 The last sentence: “The linearity assumption is better approximated for the offline approach” should no appear in a figure caption.

Reply: corrected. The sentence has been removed.

- Figure 11 The final sentence: “, i.e these are the optimal perturbation sizes.” is not clear and not needed

Reply: corrected. The sentence has been removed.

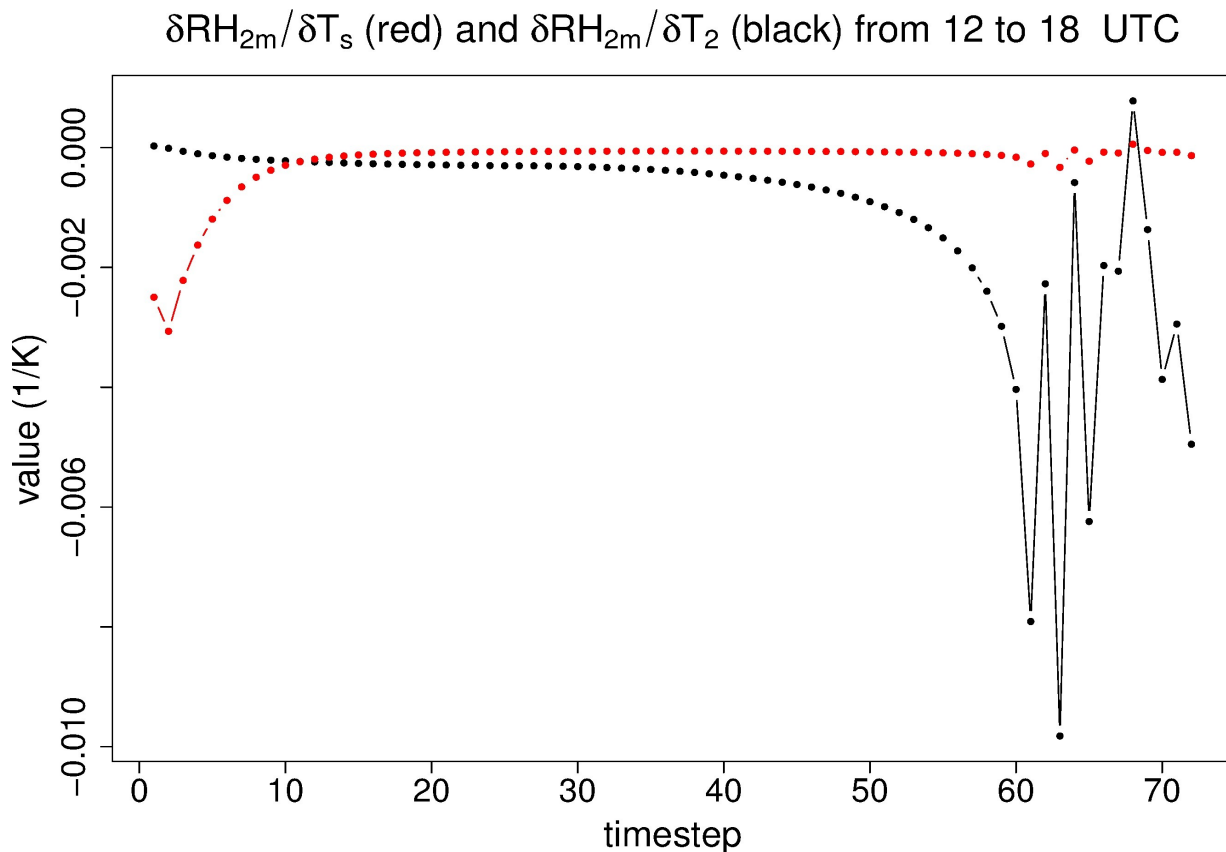


Figure 1: Evolution of the Jacobian value from 12UTC until 18 UTC for an offline SURFEX run on 2 July 2010 in location A (output plotted every timestep). Perturbation for the initial perturbed states is $1e-04$.

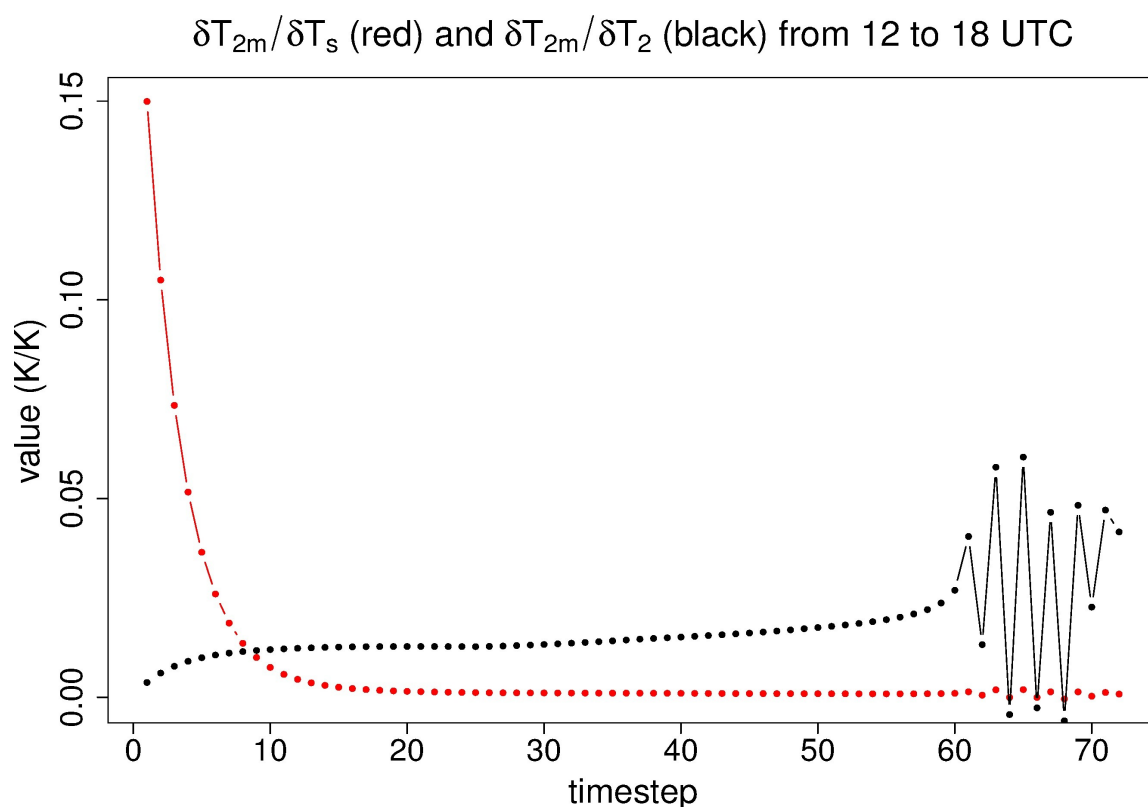


Figure 2: Evolution of the Jacobian value from 12UTC until 18 UTC for an offline SURFEX run on 2 July 2010 in location A (output plotted every timestep). Perturbation for the initial perturbed states is $1e-04$.

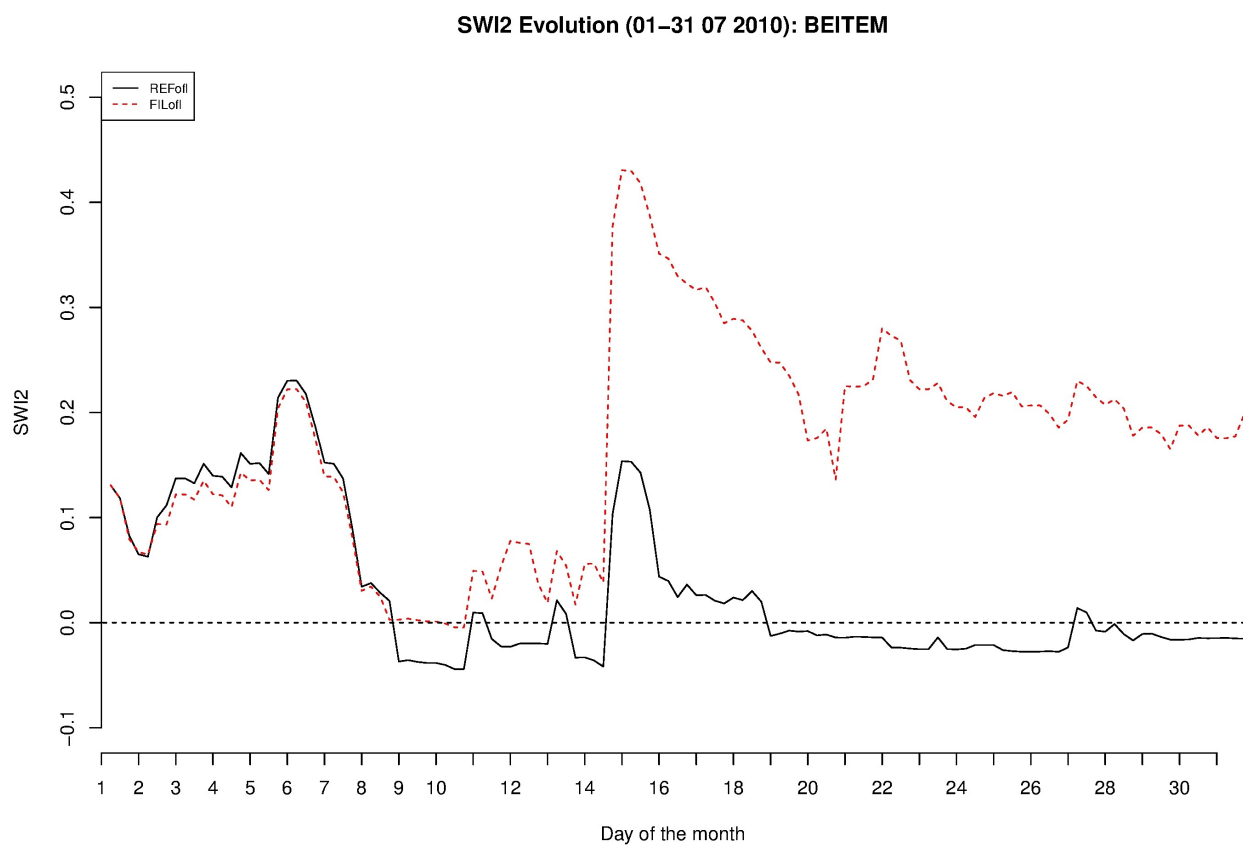


Figure 3: Evolution of the Soil Wetness Index of layer 2 (SWI2) for Beitem for REF(black line) and FIL(red line).

Dear Gianpaolo Balsamo,

We would like to thank you for your careful and constructive review of our paper. We have tried to follow all your requests as best as we could and believe that it helped to substantially improve the manuscript. A point by point explanation follows below for your comments:

Main comments:

- 1) *In “5.4 Evaluation for a single point” at page 7173 there is no mention to the fact that the filtered-Jacobian experiment exhibit larger soil moisture increments in several occasions. Why is that? Was the noisy behaviour simply dampening the Jacobian value in the reference offline runs? Please explain this result.*

Reply: An explanation was added to the revised manuscript:

The large increment for FIL on 14 July corresponds to a heavy precipitation event in the region. In the second half of the month the increments for FIL are often larger than those for REF. It is easily explained by the evolution of the SWI values for W2 (not shown). On the 9th of July the negative increment of REF is much larger than that of FIL. In FIL the noise filtering in the Jacobian prevents the large negative increment. This results in a negative SWI-value for REF, while the SWI value of FIL is just above zero. As a consequence FIL remains sensitive to increments, while in REF the increments for W2 remain near zero as long as the SWI value is negative. The heavy precipitation event of 14 July brings the SWI value of REF above zero again, but on 16 and 19 July this results in a strong negative W2 increment. After that the SWI value of REF remains below zero most of the time, while the SWI value of FIL is positive and thus FIL has larger increments in this period.

The corresponding figure (Fig. 1) is added to this document for the reviewer.

- 2) *The scores comparison between coupled and offline estimated Jacobian is not made. Are those scores exactly the same? By visual comparison of Figure 15 and 16 this seems the case. If so this is a remarkable result and also a worthwhile comment to be added in 5.4 and the conclusions.*

Reply: The scores are much alike but not exactly the same. To show this, two figures (Fig. 2 and Fig. 3) were added here for the reviewer with the forecast scores for REF and FIL on the same figure for RH2m and T2m. Furthermore, related to comment nr. 3, a table was added to the revised manuscript with the forecast scores averaged over 13 Belgian stations for the coupled and the offline case. A paragraph about the scores comparison between the coupled and offline estimated Jacobian was added to the revised manuscript at the end of 5.4:

The scores of the offline and coupled runs are very similar to each other. In the coupled case the improvement in the filtering (FIL) RH2m scores compared to REF is larger than the improvement in the offline scores (table 2 and figures 15 and 16). This is probably due to the fact that in the coupled case more oscillations are present due to feedback mechanisms between the soil and the atmosphere. Overall the scores of FILcpl are the lowest. For FILcpl, the coupling between the soil and the atmosphere allows a more correct Jacobian calculation and the filtering succeeds in removing the more abundant oscillations.

A few sentences were also added to the conclusions in the revised manuscript:

The T2m and RH2m forecast scores for the offline and coupled approach are very similar. In both approaches the filtering produces similar scores for T2m and a small improvement in the RH2m scores. This RH2m improvement is larger for the coupled approach and in general the coupled, filtered approach gives best forecast scores. However, due to limited computational resources, we still prefer the offline filtered approach which takes a lot less computing time. For example, on the Belgian computer the offline approach of the EKF takes 7 minutes on 6 cpus while the coupled approach takes 52 minutes.

- 3) *Given the number of stations present is manageable if possible I would suggest adding a table with results for temperature and relative humidity scores supporting the statement at P7173L13-15. I believe this could strengthen the conclusions.*

Reply: We think this is a good suggestion. A table was added to the revised manuscript with the RH2m and T2m forecast scores for the four runs averaged over 13 stations in Belgium. A sentence about this was added to the revised manuscript:

Table 2 shows the T2m and RH2m forecast scores averaged over 13 stations in Belgium for REFofl, FILofl, REFcpl and FILcpl. This shows that, when averaging over 13 stations in Belgium, the filtered runs give a small improvement in scores for RH2m and similar scores for T2m.

- 4) *In the perspective there is no mention to the possibility of using a different and more realistic vertical discretization for the soil layers (e.g. ISBA-DIF). Is this not envisaged in the future? For instance the irrelevance of w_g Jacobians and the dominant weight of the w_2 Jacobians in the presented study are also a reflection of the choice of land surface scheme version so maybe adding a comment on those lines would be worthwhile.*

Reply: We agree with this comment. A paragraph about this was added to the revised manuscript:

The results in this paper are specific to the choice of LSM, i.e. the 2-layer IBSA scheme. For example the dominance of the weights of the Jacobians of w_2 compared to w_g is expected to change when a more realistic vertical discretization of the soil layers is used like in the ISBA-DIF scheme (Boone et al., 2000; Habets et al., 2003).

- 5) *While the method is applied to the operational ALARO domain it is not clear if the method is expected to be used operationally (or is already) and if yes which of the studied configuration is likely to be considered. A sentence in the introduction (in case already in operations) and conclusion would be a worthwhile clarification.*

Reply: The EKF is not yet used operationally, but it is expected to be in the future. A sentence about this was added to the revised manuscript: **In a next step the filtered offline approach of the EKF soil analysis for SURFEX will be combined with a 3D-var assimilation for the upper-air of the ALARO model. This will be an important step towards the operational use of the EKF which is planned for the future.**

Detail comments:

- 7164 L25: *processses* → *processes*

Reply: corrected

- 7167L4: *jacobian* → *Jacobian*

Reply: corrected

- 7169L6: *alinged* → *aligned*

Reply: corrected

- 7174L12: *disapear* → *disappear*

Reply: corrected

- 7190Lend-3: *finitie* → *finite*

Reply: corrected

- 7194 Fig 14; *why not plotting figure a with the same x-axis as b,c?*

Reply: The x-axis of figure 14a has been changed so that it is the same as that of b and c.

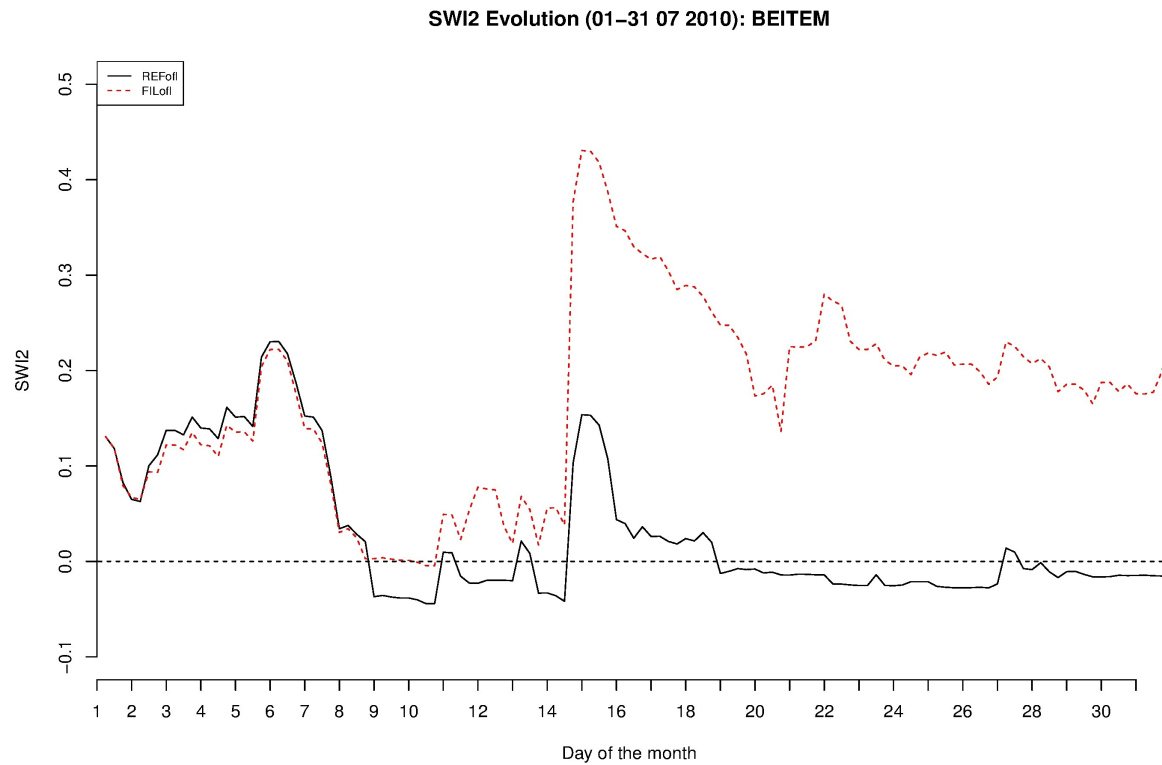
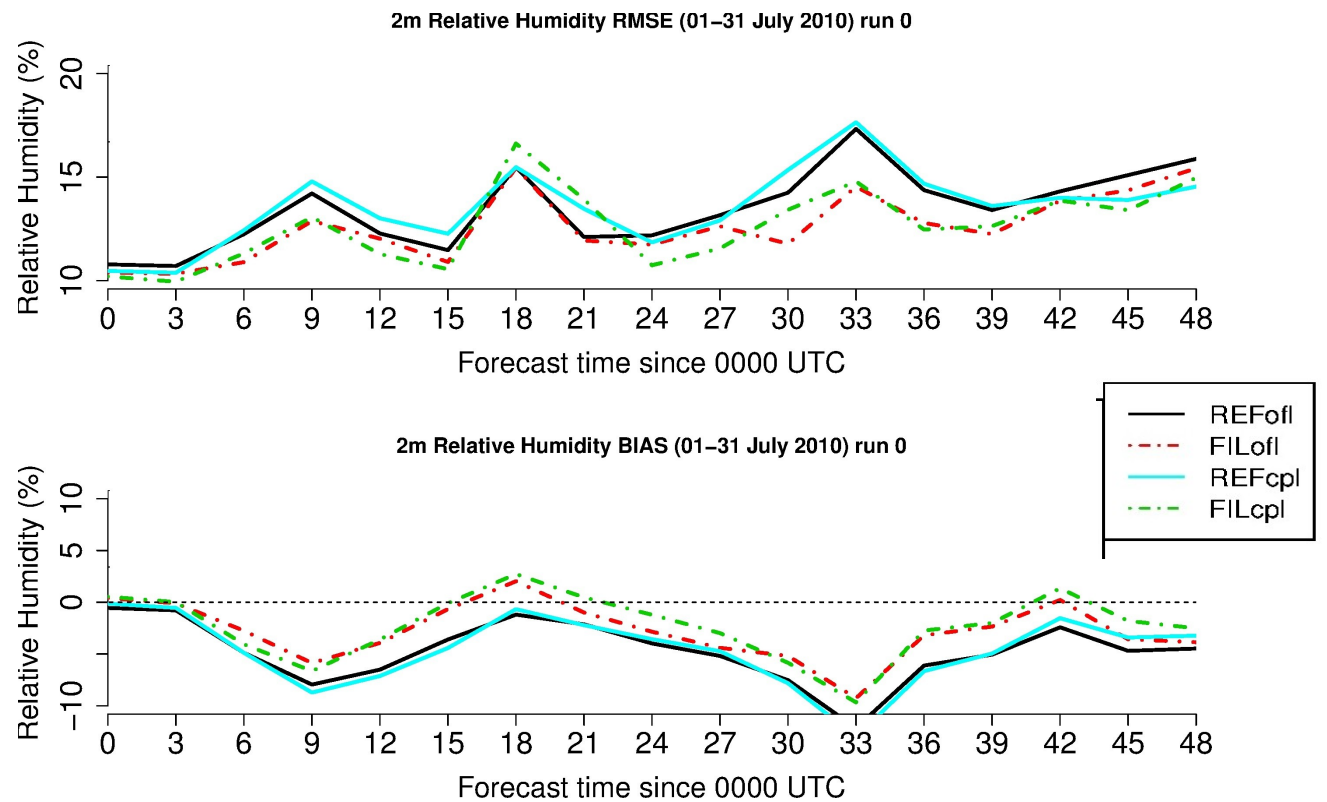


Figure 1: Evolution of the Soil Wetness Index of layer 2 (SWI2) for Beitem for REF(black) and FIL(red)

Figure 2: Comparison of RH2m forecast scores between offline and coupled runs.



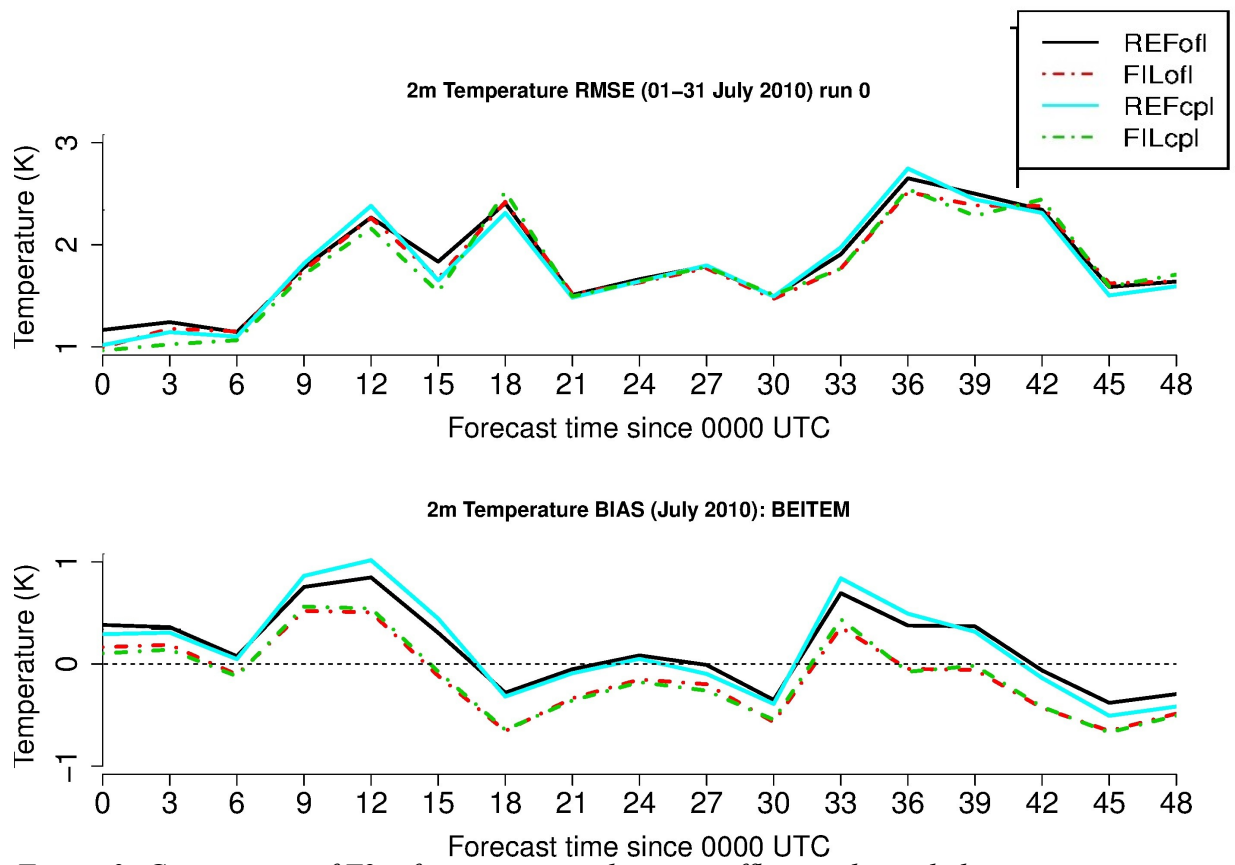


Figure 3: Comparison of T2m forecast scores between offline and coupled runs.

Study of the Jacobian of an Extended Kalman Filter for soil analysis in SURFEXv5

A. Duerinckx^{1,2}, R. Hamdi^{1,2}, J.-F. Mahfouf³, and P. Termonia^{1,2}

¹Department of Physics and Astronomy, Ghent University, Ghent, Belgium

²Royal Meteorological Institute, Ringlaan 3, 1180 Brussels, Belgium

³GAME, CNRM, Météo-France, CNRS, Toulouse, France

Correspondence to: A. Duerinckx (annelies.duerinckx@meteo.be)

Abstract

An externalised surface scheme like SURFEX allows computationally cheap offline runs. This is a major advantage for surface assimilation techniques such as the Extended Kalman Filter (EKF), where the offline runs allow a cheaper numerical estimation of the observation operator Jacobian. In the recent past an EKF has been developed within SURFEX for the initialisation of soil water content and soil temperature based on screen-level temperature and relative humidity observations. In this paper we make a comparison of the Jacobian calculated with offline SURFEX runs and with runs coupled to the atmospheric ALARO model. Comparisons are made with respect to spatial structure and average value of the Jacobian, gain values and increments. We determine the optimal perturbation size of the Jacobian for the offline and coupled approaches and compare the linearity of the Jacobian for these cases. Results show that the offline Jacobian approach gives similar results as the coupled approach and it allows for smaller perturbation sizes that better approximate this linearity assumption. We document a new case of non-linearities that can hamper this linearity assumption and cause spurious $2\Delta t$ oscillations in small parts of the domain for the coupled as well as the offline runs. While these oscillations do not have a detrimental effect on the model run, they can introduce some noise in the Jacobian in the affected locations. The oscillations influence both the surface fluxes and the screen-level variables. The oscillations occur in the late afternoon in summer when a stable boundary layer starts to form near the surface. We propose a filter to remove the oscillations and show that this filter works accordingly.

1 Introduction

Externalizing surface schemes from upper-air atmospheric models has many advantages. If the interface between the different parts is defined in a flexible manner (see Best et al., 2004, for an example) then it provides the possibility to plug one scheme in different models, even targetting different applications, ranging from climate to high-impact weather. Another

major advantage is that the scheme can also be used in an offline mode allowing for cheap solutions in specific applications. An example of this is studied with in the present paper; the implementation of an Extended Kalman Filter (EKF) for surface assimilation (Mahfouf et al., 2009) where cheap offline runs with the external land surface model SURFEX (Masson et al., 2013; Hamdi et al., 2014a) allow to numerically estimate the observation operator Jacobian.

Surface assimilation techniques, like this EKF, can improve the boundary layer forecasts of a Numerical Weather Prediction (NWP) model considerably (Douville et al., 2000; Hess, 2001; Drusch and Viterbo, 2007). The surface serves as a lower boundary condition for the NWP model and has an important impact on the lower atmosphere. Land Surface Models (LSMs) determine the partitioning of the energy into latent and sensible heat fluxes (eg. by means of evapotranspiration processes) and these fluxes provide the main link between the surface and the atmosphere. In the past two decades LSMs have been improved considerably. Still there are a lot of uncertainties and errors in model parameterisations, model resolution and observations measurements of soil variables. In order to provide an optimal initial surface state for an NWP forecast, the assimilation of surface observations into the land surface model is necessary. The amount and frequency of direct soil observations, like root zone soil moisture content and root zone soil temperature, is too limited for soil analysis. Therefore, Douville et al. (2000) suggests to use screen-level temperature and screen-level relative humidity as indirect observations for soil moisture content and soil temperature. These screen-level observations are more frequently and numerous available and in most situations they contain a lot of information about the soil moisture content and soil temperature. In the past, Optimum Interpolation (OI) (Giard and Bazile, 2000; Mahfouf et al., 2000) was the most commonly used soil analysis technique. A local Optimum Interpolation algorithm to assimilate screen-level temperature and screen-level relative humidity has been tested within SURFEX (Mahfouf et al., 2009) and is used operationally in various NWP centers.

The screen-level temperature and relative humidity forecast errors are not always caused by errors in the soil variables (Draper et al., 2011). When the local soil moisture – atmo-

spheric boundary layer feedback is weak, for example in situations of weak radiative forcing or strong advection, the screen-level observations do not provide any information about errors in the soil. Therefore, it would be useful to also include other soil observation types in the soil analysis, for example remotely sensed soil moisture (Draper et al., 2009, 2011). OI uses analytically derived coefficients, making it difficult to include new observation types in this technique. To overcome this difficulty, a new surface assimilation technique has been recently developed for SURFEX: an Extended Kalman Filter (EKF) (Masson et al., 2013; Hamdi et al., 2014a). The advantage of the EKF over OI are the dynamically calculated gain coefficients. They make it easier to include new observation types. Another advantage is that those dynamical gain coefficients automatically take into account the situations in which there is only a weak link or even no link between the soil variables and the atmospheric boundary layer. Hence no hardcoded switches are needed to diminish or turn off the assimilation in such cases.

An EKF has been developed for SURFEX by Mahfouf et al. (2009), assimilating screen-level temperature and relative humidity to correct soil moisture and soil temperature. Results indicate that OI and the EKF have similar gain coefficients and increments. The EKF has been extended to include other observation types, like AMSR-E soil moisture retrievals (Draper et al., 2009), radar precipitation information (Mahfouf and Bliznak, 2011), ASCAT surface soil moisture (Mahfouf, 2010; de Rosnay et al., 2012).

The cornerstone of the EKF is the Jacobian of the observation operator. The Jacobian describes the sensitivity of the screen-level observations to changes in the soil prognostic variables. Mahfouf et al. (2009) suggest to calculate the Jacobian with a finite differences approach, using a reference run and one perturbed run for each of the soil prognostic variables (i.e. a run with an initial surface where one of the prognostic variables has been perturbed). These reference and perturbed runs can either be calculated using SURFEX coupled to a full atmospheric forecast or using SURFEX offline. The latter is computationally much cheaper. The calculation of this Jacobian with finite differences assumes a linear response of the land-surface evaporation to a small soil moisture variation. Balsamo et al. (2004) show that, even though this hypothesis is well satisfied, some noise may still enter

the Jacobian matrix under certain meteorological conditions. For example in rainy conditions, small perturbations in soil moisture content can have nonlinear threshold effects on the cloudiness and precipitation. This leads to oscillatory model trajectories for the screen-level variables and introduces noise in the Jacobian matrix for the rainy areas. Balsamo et al. (2004) propose to switch off the soil-moisture analysis under these circumstances. They also show the importance of using a good perturbation size, that best satisfies this linearity hypothesis. Balsamo et al. (2007) compare the information content and the gain components for the offline and coupled Jacobian approach of the EKF. They use a set of simulated observations in a one day assimilation experiment to verify the impact of the coupling assumption. They use the Interactions between Soil-Biosphere-Atmosphere (ISBA, Noilhan and Planton, 1989; Noilhan and Mahfouf, 1996) surface scheme within the GEM regional model (Mailhot et al., 2006; Côté et al., 1998) for the coupled runs. For the offline runs they use the Land Data Assimilation System (LDAS, Mitchell et al., 2004), with a 3 hourly forcing from GEM's lowest vertical level output (at 50 m height) and a vertical interpolation according to Delage (1997). They conclude that the gain values are smaller for offline runs, but they have the same spatial patterns as the values calculated with the fully coupled runs. The lack of coupling with the full planetary boundary layer in case of the offline runs, reduces the influence of the soil variables on the surface boundary layer (Mahfouf et al., 2009). Overall the Jacobians calculated with offline runs seem to be a good and computationally more feasible alternative for the use of the Jacobians calculated with the fully coupled model. In de Rosnay et al. (2012) fully coupled forecasts are used to calculate the Jacobian, because the ECMWF does not yet have an externalised version of their LSM (i.e. HTESSEL) at their disposal. They use the EKF operationally in combination with a four dimensional variational (4DVAR) atmospheric assimilation, replacing the old OI soil analysis of the global ECMWF Integrated Forecasting System (IFS) since November 2010. In their current setup the EKF only corrects the soil moisture content, not the soil temperature.

The numerical approach to calculate the Jacobian makes the EKF scheme more flexible for surface analysis than the OI scheme. The EKF does not require to analytically recompute the observation operator and gain coefficients each time new observation types are

included. Having an externalised surface scheme that can be run in offline mode, like SURFEX, is essential to a computationally efficient calculation of the Jacobians. In this paper the difference between the offline and coupled Jacobian calculation is studied more in depth correcting for both soil moisture content and soil temperature. The comparisons are made with SURFEX in offline mode and coupled to the ALARO-model (Bubnová et al., 1993; Gerard et al., 2009), following the study of Balsamo et al. (2007). We document a case where spurious $2\Delta t$ oscillations occur in some parts of the domain for the coupled as well as the offline runs. The oscillations are too small to have a detrimental effect on the performance of the model runs and remain thus unnoticed in coupled model runs. However, in an EKF applications the magnitude of the numerical perturbations used to estimate the Jacobians may acquire the same order of magnitude as these oscillations and this may induce noise in the affected increments of the data assimilation. In the present paper we provide a workaround for these oscillations by applying a numerical filter with the EKF formulation. We provide some evidence that these oscillations are due to a decoupling between the surface and the atmosphere. In Sect. 2 the ALARO model, the SURFEX scheme and the EKF technique are described and in Sect. 3 the experimental setup is given. Section 4 shows the origin and effects of noisy Jacobians as well as the proposed filtering workaround. In Sect. 5 the results are presented and a comparison is made between the offline and coupled approach for the EKF. Finally, the conclusions and perspectives are discussed in Sect. 6.

2 Methodology

In this paper the atmospheric Limited Area Model (LAM) ALARO has been used in combination with an externalised surface model SURFEX (Hamdi et al., 2014a). When SURFEX is coupled to the atmospheric model, they exchange fluxes and forcing at every timestep. SURFEX can also be used in offline mode, i.e. without coupling to an atmospheric run (Fig. 1). In offline mode ALARO provides hourly forcing for SURFEX, but there is no feedback from SURFEX to ALARO. The difference between the coupled and offline approach is shown in figure 1. An EKF is used to provide an initial state for the surface. The follow-

ing subsections will discuss in more detail the ALARO model, the SURFEX scheme and the EKF data assimilation technique.

2.1 The atmospheric model ALARO

The ~~atmospheric model used in this study~~ ALADIN model is the LAM ~~ALARO~~, i.e. a recent version of the ~~ALADIN model~~ (Bubnová et al., 1993, 1995) updated with new physical parameterisation schemes. The ~~ALARO model~~ uses Action de Recherche Petite Echelle Grande Echelle Integrated Forecast System (ARPEGE-IFS) (Bubnová et al., 1995), developed by MétéoFrance and the ECMWF. In the ALARO model, ALADIN is updated with the ALARO-0 physics package, ~~containing the 3MT cloud and precipitation scheme of Gerard and Geleyn (2005); Gerard (2007); Gerard et al. (2009).~~ This parameterisation has been designed to run at ~~convection-permitting resolutions~~ and resolutions from the mesoscale to the cloud-resolving scales in a scale-aware manner, based on the modelling approach of the Modular Multiscale Microphysics and Transport (3MT) cloud and precipitation scheme of Gerard and Geleyn (2005); Gerard (2007); Gerard et al. (2009) and has been validated up to a spatial resolution of 4 km for NWP ~~(Gerard et al., 2009)~~ (Gerard et al., 2009; De Meutter et al., 2015) and climate (Hamdi et al., 2012, 2014b; De Troch et al., 2013). The ~~ALARO-ALARO-0~~ physics package is coupled to the dynamics ~~of the ALADIN model~~ via a physic-dynamics interface based on a flux-conservative formulation of the equations proposed by Catry et al. (2007). ~~ALADIN is the LAM version of the global ARPEGE-IFS model, developed by Mto France and the ECMWF.~~ The ALARO model is running operationally at the Royal Meteorological Institute (RMI) of Belgium as well as in a number of other countries of the ALADIN and HIRLAM consortia.

2.2 The Land Surface Model SURFEX

SURFEX (SURFace EXternalisée) (Masson et al., 2013) is an external land surface scheme that originates from the mesoscale model meso-NH (Lafore et al., 1998). The coupling of SURFEX to the atmosphere follows the approach of Polcher et al. (1998) and Best et al. (2004). At every time step SURFEX receives forcing for every gridbox from the atmospheric model and provides fluxes to the atmospheric model. The forcing includes low level atmosphere temperature, specific humidity, horizontal wind components, surface pressure, total precipitation, long-wave radiation, short-wave direct and diffuse radiations. The fluxes calculated by SURFEX are averaged fluxes for momentum, sensible and latent heats and radiative properties like surface temperature, surface direct and diffuse albedo and surface emissivity. SURFEX has a modular structure that can include new parameterisations. In SURFEX, a grid box is build up from four different tiles: sea, lakes, nature and town. The nature tiles can include up to 12 patches, representing the different vegetation types. The fluxes for each gridbox are averaged according to the weight of each of the tiles for that gridbox. For sea and ocean tiles, two options are available: a simple formulation with constant sea surface temperature (SST) using Charnock's approach and a one-dimensional ocean mixing layer model (Lebeaupin, 2007). The FLAKE model (Mironov et al., 2013) can be used in case of a lake tile. Town tiles use the TEB scheme (Town Energy Balance developed by Masson, 2000) and nature tiles use the ISBA scheme (Interaction between the Soil, Biosphere and Atmosphere, developed by Noilhan and Planton, 1989 and Noilhan and Mahfouf, 1996). SURFEX also includes the CANOPY parameterisation (Masson and Seity, 2009; Hamdi and Masson, 2008), a multilayer parametrization for the natural and urban canopy.

In the setup used here, surface assimilation is only performed on the nature tiles. For these tiles, the two-layer version of the ISBA scheme is used with one vegetation patch. It describes the heat, moisture and momentum exchanges between the surface and the atmospheric boundary layer, based on the force-restore method proposed by Deardorff (1977, 1978). The two layer version of ISBA has four prognostic variables: surface and deep

soil temperature (T_s and T_2) and corresponding soil water content (W_g and W_2). In offline mode the atmospheric forcing is applied at the first atmospheric model layer (~ 17 m).

2.3 The Extended Kalman Filter for soil analysis

Mahfouf et al. (2009) describe the EKF that has been developed within SURFEX. The equation for the model state analysis of the EKF is:

$$x_a^t = x_b^t + \mathbf{B}\mathbf{H}^T(\mathbf{H}\mathbf{B}\mathbf{H}^T + \mathbf{R})^{-1}[\underline{y_o^t - \mathcal{H}(x_b^o)}]^{-1}[\underline{y_o^t - \mathcal{H}(x_b^{t_0})}]$$

where ~~the analysis~~ subscripts a,b,o indicate the analysis, background and observations, such that the analysis model state x_a is equal to the sum of the background model state x_b and an increment based on the observation departure ~~($y_o^t - \mathcal{H}(x_b^o)$)~~ $[y_o^t - \mathcal{H}(x_b^{t_0})]$ and the Kalman gain matrix $\mathbf{B}\mathbf{H}^T(\mathbf{H}\mathbf{B}\mathbf{H}^T + \mathbf{R})^{-1}$. t is the time step indicator, \mathbf{B} is the covariance matrix of background errors, \mathbf{R} is the covariance matrix of observation errors and y is the observation vector. \mathcal{H} is the observation operator projecting the model state onto the observation space. In the particular case of this study the observation operator \mathcal{H} is the product of the model state evolution from time $t_0 = t - \Delta t$ to time t (the observation time), and the conversion of the model state into an observation equivalent, as it is done in Mahfouf et al. (2009):

$$\mathcal{H}(\cdot) \sim \mathbb{H}(\mathbb{M}(\cdot))$$

The increments are thus applied at the end of the assimilation window instead of at the beginning (like in ~~?~~ Balsamo et al., 2004). This saves a model integration starting from the analysis state. Furthermore, the \mathbf{B} matrix is implicitly evolved by the linearised model because \mathcal{H} includes a model propagation.

\mathbf{H} is the Jacobian of the observation operator, i.e. the linearised model observation operator. The use of this Jacobian allows the EKF to create dynamical coefficients that depend on the specific conditions of each grid point and leads to a relatively easy integration of new

observation types in the EKF. Since the observation operator includes a model propagation from time t_0 to time t , the Jacobian of the observation operator reads:

$$\frac{\delta y^t}{\delta x^{t_0}} = \frac{\delta y^t}{\delta x^t} \times \frac{\delta x^t}{\delta x^{t_0}}$$

The numerical computation of the Jacobian uses a finite differences approach in the following way:

$$\mathbf{H} = \frac{\delta y^t}{\delta x^{t_0}} = \frac{y_i^t(x^{t_0} + \delta x_j) - y_i^t(x^{t_0})}{\delta x_j}$$

A small perturbation δx_j is added to one of the soil prognostic variables x_j at time t_0 . Then the perturbed model state is evolved from time $t_0 = t - \Delta t$ to time t and at time t the evolved perturbed model state is projected into observations space to obtain the corresponding observation values $y_i(x + \delta x_j)$. The value of the Jacobian is determined by the difference between this perturbed observation values $y_i(x + \delta x_j)$ and the reference observation value $y_i(x)$. The value of the Jacobian thus depends on how the observation value changes after a Δt run, when the soil prognostic variable is perturbed at the initial time. The value δx_j must be small enough to accurately approximate the derivative but not too small to avoid round-off errors.

There are two possibilities for calculating the perturbed and reference y_i : by means of a surface scheme coupled to an atmospheric scheme (coupled) or with a surface scheme decoupled from the atmospheric scheme (offline). In the former case, feedback from the surface to the upper-air atmosphere is possible. In the latter case, the atmospheric forcing is imposed from the lowest model level.

3 Experimental setup

The EKF for soil analysis has been tested using the same setup [and covariance values](#) as in Mahfouf et al. (2009), with two soil-layers and four prognostic variables: superficial soil

water content (W_g), root zone soil water content (W_2), surface temperature (T_s) and deep soil temperature (T_2). [Observations of \$T_{2m}\$ and \$RH_{2m}\$ are assimilated to correct errors in soil moisture and soil temperature.](#) The observation error covariance matrix \mathbf{R} is a diagonal matrix with elements set to 1 K for 2 m temperature and 10 % for 2 m relative humidity. The background error covariance matrix \mathbf{B} is also a diagonal matrix, with 2 K for the background errors of T_s and T_2 and $0.1 \times (w_{fc} - w_{wilt})$ for W_g and W_2 , with W_{fc} and W_{wilt} respectively the volumetric water content at field capacity and at permanent wilting point. The \mathbf{B} matrix is kept constant. Mahfouf et al. (2009) explain that the increase in the background error during the forecast step is balanced by the decrease in the background error during the analysis step. In accordance with that, Draper et al. (2009) found that using a constant \mathbf{B} matrix instead of evolving the \mathbf{B} matrix produces similar results for the analysis of near-surface soil moisture. Because of the constant \mathbf{B} matrix the EKF is in fact a simplified EKF.

For the upper air no data assimilation is performed. The initial upper air conditions and the lateral boundary conditions are interpolated from an ARPEGE run, the global Météo France model. Lateral boundary conditions are provided every 3 h from the ARPEGE model. The atmospheric model setup has 46 vertical levels. All experiments have been run over a one month period during July 2010, with a 6 h assimilation cycle for the surface. The operational ALARO-Belgium domain was used, which has a 4 km resolution (181×181 grid points, see Fig. 2).

For the perturbed runs of the EKF Jacobian-calculation, two methods were tested. The offline mode utilises offline SURFEX runs with hourly atmospheric forcing files calculated during the fully coupled forecast from the previous assimilation cycle (REFoff). In the coupled mode, the perturbed runs are calculated using SURFEX fully coupled to ALARO (REFcpl).

4 Oscillations in the boundary layer

Balsamo et al. (2004) mention oscillatory trajectories of the screen-level variables that can introduce noise in the Jacobian matrix of the EKF. They show that these oscillatory trajec-

ries occur in cloudy and rainy conditions and can be linked to evapotranspiration thresholds. In this section we document another kind of oscillation, a $2\Delta t$ oscillation that can be linked to the stability parameters and the formation of a stable boundary layer in the late afternoon. We will show how this oscillation influences the Jacobians and propose a method for filtering the oscillation before calculating the Jacobian.

Figure 3 shows the evolution of the Richardson number (top) and corresponding T_{2m} (bottom) in location B and location C indicated on Fig. 2 for a coupled run. In Fig. 3a and b, the Richardson number for the lowest level is shown as it is calculated in SURFEX (black) and as it would be calculated for the same level in ALARO (red). As long as the Richardson number is negative (i.e. unstable conditions) the Richardson number calculated in SURFEX and ALARO correspond to each other. But when the Richardson number becomes positive (i.e. a stable boundary layer starts to form) there is a small divergence between SURFEX and the atmosphere. In some cases, as in Fig. 3a, an oscillation sets in when the Richardson number becomes positive.

These oscillations were found in the coupled as well as offline SURFEX runs from 12:00 to 18:00 UTC. The oscillations can be found in all surface variables that are related to the fluxes between the soil and the lower atmosphere. The oscillations occur only during the late afternoon when the surface cools down again. In those cases a stable boundary layer starts to form and the atmosphere decouples from the surface.

Figure 4 shows the evolution of T_{2m} (black) and RH_{2m} (red) from 12:00 to 18:00 UTC on 2 July 2010 for different settings in location A indicated on Fig. 2. An oscillation sets in as soon as the Richardson number becomes positive. This oscillation is clearly visible in the evolution of T_{2m} (black) and RH_{2m} (red). Figure 4a shows the evolution of these two variables for an offline SURFEX run with a timestep of 300 s. Small oscillations are visible near the end of the run with an average size of 2 % for RH_{2m} and 0.2 K for T_{2m} . In Fig. 4b the timestep is 60 s instead of 300 s. The size and time-interval of the oscillations is the same as in Fig. 4a, but the frequency of the oscillations increases with the timestep. This means that the oscillations are $2\Delta t$ oscillations and hence they do not represent a physical process. The oscillations are also present in a coupled run for the same location and period. Figure

4c shows the evolution of T_{2m} (black) and RH_{2m} (red) for a coupled run with a timestep of 180 s. The oscillation starts somewhat later than for the offline runs because the Richardson number remains negative for a longer period in this coupled run. The order of magnitude of the oscillations is the same as for the offline runs. Figure 4d shows the same evolution for a coupled run with a timestep of 60 s instead of 180 s and also here we can see that the $2\Delta t$ oscillations do not diminish when the timestep is increased.

The oscillations present in RH_{2m} and T_{2m} will also be present and even amplified in the Jacobian. Figure 5 shows the evolution of the Jacobian values during the 6 h forecast run for the offline case in the same gridpoint A as Fig. 4 for three different timeframes. The Jacobian value in Fig. 5 is plotted at every timestep (300 s). The red dots represent the Jacobian values for a perturbation in the superficial soil layer (W_g or T_s), while the black dots represent the Jacobian values for a perturbation in the deep soil layer (W_2 or T_2). For the Jacobians with a run from 12:00 to 18:00 UTC (bottom figures) an oscillation sets in near the end of the 6 h window, introducing a noisy signal into the Jacobian values that can become of the same order of magnitude as the signal itself. This is the case for $\delta T_{2m}/\delta W_g$ (red) and $\delta T_{2m}/\delta W_2$ (black) in Fig. 5c and for $\delta RH_{2m}/\delta W_g$ (red) and $\delta RH_{2m}/\delta W_2$ (black) in Fig. 5d. Similar oscillations occur for the Jacobian values related to soil temperature for this case (not shown). These oscillations are found during the late afternoon of the runs from 12:00 to 18:00 UTC and they correspond to the oscillations visible in RH_{2m} , T_{2m} and the Richardson number Ri . The small oscillations of 2 % for RH_{2m} and 0.2 K for T_{2m} from Fig. 4 cause oscillations in the Jacobian values up to $20 \text{ m}^3 \text{ m}^{-3}$ for $\delta RH_{2m}/\delta W_2$ and up to $150 \text{ K m}^{-3} \text{ m}^{-3}$ for $\delta T_{2m}/\delta W_2$. Results of the coupled case (not shown) are similar to this offline case(not shown).

Figure 5 also clearly shows the short time memory of the superficial soil layer (red dots). Any change in the superficial soil layer is quickly lost, causing the Jacobian value to return to zero, while changes in the deep soil layer (black dots) have a more lasting influence resulting in non-zero Jacobian values at the end of the 6 h interval. Some Jacobian values converge once the initial disturbance has been uptaken by the system, eg. $\delta T_{2m}/\delta T_s$ (red)

and $\delta T_{2m}/\delta T_2$ (black) in Fig. 5a. For others the value keeps rising until the end of the time window, eg. $\delta RH_{2m}/\delta W_2$ (black) in Fig. 5b.

Figure 6a shows the spatial distribution of the oscillations for $\delta RH_{2m}/\delta W_2$ on 2 July 2010 for the offline run from 12:00 to 18:00 UTC. The number of oscillations is shown in every gridpoint. This number is calculated by counting the number of consecutive timesteps in which the gradient of the Jacobian evolution curve changes sign. Oscillations (i.e. the gradient changes sign in more than two consecutive timesteps) occur in almost all parts of the domain. In some parts of the domain, there is a resemblance between the occurrence of oscillations and a Soil Wetness Index (SWI) that is close to 0 (cfr. Fig. 6b) where SWI is defined in the following way:

$$SWI = \frac{W_2 - W_{wilt}}{W_{fc} - W_{wilt}}.$$

The effect of non-linearities for SWI-values close to 0 on the Jacobian values has already been pointed out by Balsamo et al. (2004, 2007) and in Hamdi et al. (2014a) it was shown that for SWI-values below 0 the Jacobians and increments are also 0. When looking at Fig. 6a there are also regions with oscillations that do not correspond to SWI-values close [De Meutter, P., L. Gerard, G. Smet, K. Hamid, R. Hamdi, D. Degrauwe, P. Termonia, 2015: Predicting small-scale, short-lived downbursts: case study with the NWP limited-area ALARO model for the Pukkelpop thunderstorm, Mon. Wea. Rev., doi:10.1175/MWR-D-14-00290.1, in press.](#) to 0. This indicates that there are also other non-linearities that can trigger these oscillations. The regime shift of the Richardson number turning from negative to positive, is one of them. As shown before, this change in sign of the Richardson number can cause spurious $2\Delta t$ oscillations that also have a detrimental effect on the Jacobian values. In Table 1 the percentage of gridpoints is listed in which an oscillation occurs at the end of the run, thus influencing the Jacobian value, and in total, i.e. including those oscillations during the run that end before 18:00 UTC and hence do not influence the Jacobian value. For the offline only a small portion of the Jacobian values is influenced by these oscillations, i.e. between 2.4 and 5.2%. For the coupled run this percentage is somewhat higher, between 11 and 13%. The higher number of oscillations in

the coupled run could be explained by feedback processes of the atmosphere that are triggered when making small perturbations to the soil variables (Balsamo et al., 2004). In case of the offline run, the atmosphere is forced and hence no feedback ~~processses~~ processes are possible.

In conclusion one can say that due to non-linearities, like SWI-values close to 0 or a change in sign of the Richardson number, oscillations may occur in some surface related variables like RH_{2m} and T_{2m} . They are $2\Delta t$ oscillations indicating that the oscillations are artificial. These oscillations do not diminish when the timestep is decreased, hence they are not fibrillations but rather they originate from a decoupling between the surface and the atmosphere when a stable boundary layer starts to form in the evening or when the amount of soil moisture is too low. The oscillations occur in a small number of points, widespread over the domain. The oscillations occur for various lengths of the timestep and perturbation sizes (not shown). They ~~disapear~~ disappear again after a while and are harmless for a normal run, but are amplified in the calculation of the Jacobian. The oscillations can lead to spurious values in a limited number of gridpoints for the Jacobian, gain and increments of the EKF.

The oscillations occur at critical values of the Richardson number and are not merely a numerical effect. This suggest that they could be induced by a feedback in competing fluxes between the surface and its upper-air forcing, when changing from an unstable to a stable boundary layer. Such feedbacks are difficult to diagnose. Here we limit ourselves to documenting them, but demonstrate that the impact of these oscillations can easily be cured with a simple numerical temporal filter:

- we propose a workaround for these oscillations by filtering the reference and perturbed values of T_{2m} and RH_{2m} . The temporal filter works according to the following equation:

$$x_{\text{filtered}} = 0.5 \times w \times x_{t-1} + (1 - w)x_t + 0.5 \times w \times x_{t+1}$$

with x the T_{2m} or RH_{2m} value to be filtered, t indicating the timestep and w the weight attributed to the different parts of the filter. A number of values for w have been tested and a value of 0.5, the most optimal choice for filtering the $2\Delta t$ mode, appeared to filter

out the oscillation best. Since this filter uses the reference and perturbed observation values at time t , $t - 1$ and $t + 1$, two additional output files must be provided for every run. In order to change as little as possible to the original setup of the EKF, it was chosen to work with the timesteps t , $t - 1$ and $t - 2$ instead, i.e. calculating the Jacobian for timestep $t - 1$ instead of the timestep at time t . In one timestep the value of the Jacobian will change very little and this way we avoid the need for output at timestep $t + 1$, which would require the offline runs to be extended for one additional timestep and thus would also require the atmospheric forcing to be provided beyond the 6 h interval.

The filter does not differentiate between oscillations initiated by different mechanisms. Therefore it will filter oscillations due to the critical RI values and SWI-values close to zero but also for example oscillations due to rainy conditions for the coupled approach as described by Balsamo et al. (2004).

5 Results and discussion

In the following part, the filtering approach (FIL) is compared to ~~a reference case where the oscillations are present~~ the reference approach without filtering (REFofl for the offline runmode, REFcpl for the coupled runmode). Comparisons are made with regards to the optimal perturbation size, the spatial distribution of the Jacobian values, the corresponding increments in the soil prognostic variables and the screen-level forecast scores. The offline and coupled approach for the EKF are also compared to each other.

5.1 Impact of the filtering

Figure 7 shows the evolution of T_{2m} (left) and RH_{2m} (right) at location A (cfr. Fig. 2) where an oscillation is present in the reference SURFEX run (black). Figure 7a and b (top) show the evolution in an offline SURFEX run, while Fig. 7c and d (bottom) show the result from a coupled SURFEX run. The oscillation disappears when the result is filtered (FIL, red) and

the values of the filtered result coincide with the reference values as long as there is no oscillation.

5.2 Optimal perturbation size and the linearity assumption

The Jacobians of the EKF are estimated by means of a finite differences approximation. This approximation is exact when the function is linear in the surroundings of the point. In that case neither the size nor the sign of the perturbation have any influence on the resulting value of the Jacobian. The difference between a Jacobian calculated with a positive (\mathbf{H}^+) and with a negative (\mathbf{H}^-) perturbation of the same size provides an indication of how linear the surroundings of the point are and how valid the finite differences approximation is. If the perturbation is too large, the perturbed value lies outside the linear regime around the point and the difference between \mathbf{H}^+ and \mathbf{H}^- will be large. If the perturbation is too small, the ~~jacobian~~ Jacobian value will deteriorate because of numerical accuracy. The optimal perturbation size is the minimal perturbation size for which the Jacobian value is independent of the sign (i.e. for which the difference between \mathbf{H}^+ and \mathbf{H}^- is as small as possible) (Balsamo et al., 2007).

Finding the optimal perturbation size is very important. In order to find it and to examine the differences between the approaches, experiments were run with perturbation sizes between 10^{-11} and 10^{-1} for each of the eight components of the Jacobian. Results are shown in Fig. 8, which shows the difference between \mathbf{H}^+ and \mathbf{H}^- (black lines) and the average value $((\mathbf{H}^+ - \mathbf{H}^-)/2)$ (red lines) for $\delta\text{RH}_{2\text{m}}/\delta W_2$ and $\delta T_{2\text{m}}/\delta W_2$ on 6–2 July 2010, averaged over the whole domain for all the perturbation sizes. For the Jacobian calculated with coupled perturbation runs, perturbation sizes smaller than 10^{-4} caused a lot of noise resulting in extremely high values for $|\mathbf{H}^+ - \mathbf{H}^-|$. Therefore results are only shown between 10^{-4} and 10^{-1} for the coupled EKF.

There are a number of differences between the offline and coupled approach. First, the optimal perturbation size is larger for the coupled approach (between 10^{-2} and 10^{-1}) than for the offline approach (between 10^{-9} and 10^{-7}). This is in accordance with Balsamo et al. (2007). For a coupled approach with a too small perturbation size, non-linear feedbacks

between the atmosphere and the soil can occur. These non-linearities cause the Jacobian to be noisy and inaccurate. Since in the offline approach the atmosphere is forced, these non-linear feedbacks cannot occur and the perturbation size can be a lot smaller. This optimal perturbation size for the coupled approach is similar to the optimal values of 15–20 % of the SWI-value found in Balsamo et al. (2004) and the value of $0.01 \text{ m}^3 \text{ m}^{-3}$ used by de Rosnay et al. (2012) and Drusch et al. (2009). For the offline approach the optimal perturbation size found here is somewhat smaller than the values used in Mahfouf et al. (2009), where $10^{-4} \text{ m}^3 \text{ m}^{-3}$ is used for W_g and W_2 and 10^{-5} K for T_s and T_2 .

The differences between Jacobians from positive and negative perturbations ($|\mathbf{H}^+ - \mathbf{H}^-|$), are a lot smaller for the offline approach than for the coupled approach indicating that the linearity assumption is better approximated for the offline approach. This is a logical consequence of the fact that the coupled approach requires a larger perturbation size in order to avoid a noisy \mathbf{H} matrix. If the perturbation size is larger, the perturbed value will more easily fall outside of the linear regime around the point in which the Jacobian is calculated.

The optimal perturbation size has also been studied for the filtering solution (FIL) (results not shown here). For FIL the values of $|\mathbf{H}^+ - \mathbf{H}^-|$ and $(\mathbf{H}^+ - \mathbf{H}^-)/2$ averaged over the domain are very similar to those of the REF run and hence the optimal **perturbation** size remains the same. One thing that can be noted is that in FIL the non-linearities (measured by high values for $|\mathbf{H}^+ - \mathbf{H}^-|$) are less extreme for the very high or low perturbation sizes.

Another way to verify the linear regime of the finite differences approximation is by plotting the Jacobian values from positive perturbations against those of negative perturbations. If all points are along the diagonal, the Jacobians are in the linear regime of the observation operator. Figure 10-9 shows such plots for the offline EKF (Fig. 109a and c) and the coupled EKF (Fig. 109b and d) for two different perturbation sizes. The offline EKF has much lower Jacobian values than the coupled EKF and the linear regime is better approximated for the offline approach. For a perturbation size of 10^{-4} the points of the offline EKF are nicely aligned along the diagonal indicating that the perturbation size is within the linear regime. The points of the coupled EKF follow slightly the opposite diagonal. **This means**

that a Jacobian calculated with a positive perturbation has the same size but an opposite sign as the Jacobian value calculated with a negative perturbation. It cannot be excluded that some non-linear feedback effects between the surface and the atmosphere are triggered here but this is out of scope of the present paper. If the perturbation size increases to 10^{-2} for the offline EKF, more points deviate from the diagonal compared to the 10^{-4} offline case. The horizontal line represents points that are sensitive to the positive perturbation (i.e. have a Jacobian value different from zero) but not sensitive to the negative perturbation (i.e. have a jacobian value equal to zero). These points are in an area with negative SWI values. The negative perturbation decreases the SWI value even further, resulting in a Jacobian value of zero. The positive perturbation on the other hand is large enough to increase this SWI value above zero and hence the Jacobian from this positive perturbation will not be zero. This is in accordance with what has been found by Mahfouf et al. (2009).

For the coupled EKF, increasing the perturbation size to 10^{-2} causes the points to become more ~~aligned~~ aligned with the correct diagonal line. However, when comparing them to the offline EKF, they deviate more from that diagonal and the values of the Jacobians are larger for the coupled EKF. The results for the filtering solution FIL are very similar to those of the reference described here (not shown).

5.2.1 Diurnal cycle

Figure 9-10 shows the Jacobian and gain values for $\delta RH_{2m}/\delta W_s$ and $\delta RH_{2m}/\delta W_2$ averaged over the whole domain on 2 July 2010 for REFofl, FILofl, REFcpl and FILcpl for the different runtimes (00:00, 06:00, 12:00 and 18:00 UTC). The average values of REF and FIL lie close together for all components, indicating that on average the proposed solutions do not cause any major changes in the values of the Jacobians and gain coefficients. The sensitivity of T_{2m} to soil moisture is mainly negative, while the link between RH_{2m} and soil moisture is positive. The Jacobian values with respect to initial soil temperature perturbations correspond very well to the values shown by Mahfouf et al. (2009). A diurnal cycle can be seen where the sensitivity of RH_{2m} to changes in soil moisture and soil temperature is largest during daytime (12:00 and 18:00 UTC) whereas the sensitivity of T_{2m} to changes in

the soil temperature is largest during night time (00:00 and 06:00 UTC). The link between the soil and the screen-level atmosphere is provided through turbulent surface fluxes, and these fluxes have a strong diurnal cycle (Mahfouf et al., 2009). The gain values of the deep soil layer (W_2 and T_2) are a factor 10 larger than those of the superficial soil layer (W_g and T_g). This is caused by the longer memory of the deep soil layer compared to the superficial soil layer. Any change made at time t_0 in the superficial soil layer will dissipate quickly and at analysis time t (i.e 6 h later) this perturbation in the superficial soil has almost completely disappeared. A perturbation to the deep soil layer at time t_0 has a more lasting effect on the screen-level variables and will still be present at the analysis time t , causing larger Jacobian and gain values. Therefore it is especially important to make sure that the increments in the deep soil layer are good since their effect will be more lasting than the effect of increments in the superficial soil layer.

The values and diurnal cycle of the coupled case are similar to the offline case. The most important difference is the larger values for the four Jacobians related to soil moisture. These W_g and W_2 related Jacobian and gain values are 2 to 4 times larger for the coupled case. There is a larger sensitivity of T_{2m} and RH_{2m} to changes in soil moisture for the coupled case. For soil temperature (not shown here) the average Jacobian and gain values are very similar to those of the offline case. The differences between FILcpl and REFcpl are somewhat larger, while in the offline case the values of FILofl and REFofl were almost exactly the same. Thus, in the coupled case, the filter is more often needed to remove oscillations.

5.2.2 Spatial structure of Gain and Jacobians

Figure 11 shows the spatial structure of the Jacobian values for $\delta T_{2m}/\delta W_2$ on 6 July 2010 at 18:00 UTC for the reference calculation (REF) and the filtering solution (FIL). As expected, the Jacobian values are negative for $\delta T_{2m}/\delta W_2$, indicating that an increase in deep soil moisture (W_2) results in a decrease in screen-level temperature and vice versa. For the offline version (first row), there are some areas in which the Jacobian values are zero. These areas have a negative SWI value indicating that the soil is too dry for the perturbation in W_2

to have any effect on T_{2m} . At the right border in the middle of the REFofl figure, there are a few gridpoints with high positive Jacobian values while their surroundings have the normal, negative values (cfr. in the black circle). This is probably noise caused by non-linearities or oscillations in the Jacobian values during the runs. In FILofl, where the oscillations are filtered out, these spurious values disappear. The spatial structure of FILofl is almost identical to that of REFofl.

The Jacobian values calculated with coupled runs (row two and three) have a slightly different spatial structure than those of the offline runs (first row). The second row of Fig. 11 shows the Jacobian values calculated with positive perturbations of size 10^{-2} . The areas where the offline version had zero values are now characterized by very high negative values. This can be explained by the fact that the optimal perturbation size is much higher for the coupled version compared to the offline version (10^{-2} vs. 10^{-7}). Due to this high, positive perturbation size, a relatively large amount of soil moisture is added in the perturbed run which raises the slightly negative SWI value above zero and in doing so, reenables the soil fluxes driven by evapotranspiration that were shut down when the SWI became negative. This results in a big difference between the reference run with a negative SWI value and the perturbed run with a positive SWI value, and hence a large Jacobian value in these areas. The Jacobian values in these areas are the highest for REFcpl+, and somewhat lower for FILcpl+. This mechanism also becomes clear when we look at the Jacobian values of the third row. Here, the Jacobian values are calculated with coupled runs and negative perturbations of size 10^{-2} , so the SWI value will only be decreased by the perturbations. In this case the areas with negative SWI value also have a Jacobian value of zero, like in the offline case. For the offline case there is no such difference between the Jacobians calculated with positive and negative perturbations (not shown here), because in the offline case the linearity assumption is much better approximated. In the presence of strong non-linearities, like around SWI-values of 0, the validity of the linearity assumption breaks down and the EKF provides a suboptimal analysis. Balsamo et al. (2004) propose not to do any assimilation in these cases, using a masking function that checks for several thresholds like cloud

cover and precipitation. Since it is not easy to list all possible sources of non-linearities, we propose to filter out the oscillations occurring in case of non-linearities.

For the coupled runs in the north-east part of the domain there are some spurious, positive Jacobian values (while it is expected that the link between T_{2m} and W_2 is negative). These are caused by non-linear feedback mechanisms in the coupled runs that cannot occur in the offline runs.

The structure and values of the Jacobians calculated in coupled runs is similar to those of the Jacobians calculated in offline runs, which confirms the results of Balsamo et al. (2007). The offline runs are thus a valid and much cheaper alternative for the coupled runs. An added advantage of the offline runs is that they allow smaller perturbation sizes and hence the linearity assumption has a much better validity.

5.3 Increments

Figure 12 shows the increments (i.e. analysis-background) of W_2 and T_2 accumulated for one day, 6 July 2010 for the offline REF and FIL run and the coupled REF run. Figure 13 shows the corresponding accumulated innovations (i.e. observation-background) for T_{2m} and RH_{2m} . The region over Belgium is characterized by positive innovations for T_{2m} up to 7 K and negative innovations for RH_{2m} up to 40 % indicating that the model is too cold and wet in this area. This can be seen in the increments. This area is characterised by negative increments for W_2 on this day up to 20 mm and positive increments for T_2 up to 3.3 K. The east side of the domain is characterised by positive W_2 increments corresponding to positive RH_{2m} innovations and negative T_{2m} innovations. The increments in W_2 are limited to the regions with a non-negative SWI value. In the areas with a negative SWI value the Jacobian and hence also the increments are zero (cfr. Fig. 11). This causes the spatial structure of the W_2 increments to be somewhat irregular at those locations (Hamdi et al., 2014a). The differences between REF and FIL are very small.

The increments for W_2 are larger for REFcpl than for REFofl while the increments for T_2 are similar for the two runs. This corresponds to the findings about the Jacobian and gain values, that were also larger in the coupled case for the soil moisture related Jacobians. T_2

~~reduce the larger increment values of the coupled runs, the values of the \mathbf{B} matrix could be reduced.~~ The spatial structure is very similar for the offline and coupled case.

5.4 Evaluation for a single point

Figure 14a shows the increments for W_2 for July 2010 in Beitem (location indicated in Fig. 2) for REFofl (black) and FILofl (red). The increments of REF and FIL have the same sign and on most days are similar in size. The ~~larger large~~ increment for FIL on 14 July corresponds to a heavy precipitation event in the region. In the second half of the month the increments for FIL are often larger than those for REF. It is easily explained by the evolution of the SWI values for W_2 (not shown). On the 9th of July the negative increment of REF is much larger than that of FIL. In FIL the noise filtering in the Jacobian prevents the large negative increment. This results in a negative SWI-value for REF, while the SWI value of FIL is just above zero. As a consequence FIL remains sensitive to increments, while in REF the increments for W_2 remain near zero as long as the SWI value is negative. The heavy precipitation event of 14 July brings the SWI value of REF above zero again, but on 16 and 19 July this results in a strong negative W_2 increment. After that the SWI value of REF remains below zero most of the time, while the SWI value of FIL is positive and thus FIL has larger increments in this period. Figure 14b shows the evolution of the RH_{2m} RMSE and BIAS forecast scores for a forecast range of 6 h during July 2010 in Beitem. In the first half of the month the scores of REF and FIL lie very close together. In the second half of the month, FIL performs a little bit better on most days. Figures 15 (offline case) and 16 (coupled case) show the RMSE and BIAS forecast scores for all forecast ranges averaged over July 2010 for the station of Beitem. The RMSE and BIAS of RH_{2m} are slightly improved in the filtering run compared to the reference run. For T_{2m} the RMSE of REF and FIL are very similar, but small differences can be seen in the BIAS. When Table 2 shows the T_{2m} and RH_{2m} forecast scores averaged over 13 stations in Belgium for REFofl, FILofl, REFcpl and FILcpl. This shows that, when averaging over 13 stations in Belgium (not shown), the filtered runs give a small improvement in scores for RH_{2m} and similar scores between FIL and REF for T_{2m} . The scores of the offline and coupled runs are very similar to each other. In the

coupled case the improvement in the filtering (FIL) $\text{RH}_{2\text{m}}$ scores compared to REF is larger than the improvement in the offline scores (table 2 and figures 15 and 16). This is probably due to the fact that in the coupled case more oscillations are present due to feedback mechanisms between the soil and the atmosphere. Overall the scores of FILcpl are the lowest. For FILcpl, the coupling between the soil and the atmosphere allows a more correct Jacobian calculation and the filtering succeeds in removing the more abundant oscillations.

6 Conclusions and perspectives

In this paper we have studied the Jacobians of an EKF using the SURFEX externalised version of the land surface scheme ISBA. We tested this EKF with the assimilation of $T_{2\text{m}}$ and $\text{RH}_{2\text{m}}$ observations to correct errors in soil moisture and soil temperature. The experiments were run over the ALADIN-Belgium 4 km domain for July 2010. The Jacobians of the EKF are calculated using finite differences approaches and require a perturbed run for each of the four soil prognostic variables. These perturbed runs can be done in coupled or offline SURFEX mode (i.e. coupled to an atmospheric run or with precalculated atmospheric forcing). We compared this offline and coupled approach for the calculation of the Jacobians. Results show that the offline approach allows smaller perturbations so that the linearity assumption for the calculation of the Jacobians with finite differences is better approximated. This is in accordance with Balsamo et al. (2007). The Jacobian and gain values are somewhat higher with the coupled approach for the soil moisture related Jacobians. The soil temperature related Jacobians have the same values in the coupled and offline approach. The spatial structure of all Jacobians is similar between the two approaches. The offline approach is thus a good and computationally much cheaper alternative to the coupled approach for calculating the Jacobians.

We identified $2\Delta t$ oscillations during the late afternoon when a stable boundary layer starts to form and the Richardson number changes from negative to positive values. The oscillations occur in the surface variables related to surface fluxes and screen-level vari-

ables like T_{2m} and RH_{2m} that are interpolated between the surface and the lowest model level. These small oscillations are artificial and disappear again after a short time. They occur only in a limited number of gridpoints. They do not have a detrimental effect on the performance of the model runs but can introduce locally noise in the Jacobian of the EKF. Nevertheless, as was shown in Fig. 14b, this noise turns out to have a substantial accumulated impact in a data assimilation cycle and filtering it improves the forecast scores, specifically for relative humidity. We have proposed and tested a numerical filter to deal with these oscillations. The filter is applied to the simulated T_{2m} and RH_{2m} values before using them in the Jacobian calculation. Results show that the filter is successful in removing the oscillation. The advantage of the filter is that it is simple to implement and barely requires any additional computation. The spatial structure and average value of the Jacobians and increments is very similar for the filtered run compared to the reference (i.e. with oscillations present).

The T_{2m} and RH_{2m} forecast scores for the offline and coupled approach are very similar. In both approaches the filtering produces similar scores for T_{2m} and a small improvement in the RH_{2m} scores. This RH_{2m} improvement is larger for the coupled approach and in general the coupled, filtered approach gives best forecast scores. However, due to limited computational resources, we still prefer the offline filtered approach which takes a lot less computing time. For example, on the Belgian computer the offline approach of the EKF takes 7 minutes on 6 cpus while the coupled approach takes 52 minutes.

In conclusion we can say that the filter is effective in removing the oscillations and thus the noise in the Jacobian calculation. This is the case for the coupled as well as the offline approach, where the latter has the advantage of being computationally cheaper and better approximating the linearity assumption for the Jacobian calculation.

The results in this paper are specific to the choice of LSM, i.e. the 2-layer IBSA scheme. For example the dominance of the weights of the Jacobians of w_2 compared to w_g is expected to change when a more realistic vertical discretization of the soil layers is used like in the ISBA-DIF scheme (Boone et al., 2000; Habets et al., 2003). The results also depend on the choice of the background and error covariance matrices values. In this paper we

used the values proposed by Mahfouf et al. (2009) . It could be interesting to compare the increments and forecast scores for different values of these covariance matrices.

The experiments in this paper were performed without atmospheric assimilation (i.e. no 3-dimensional variational assimilation, 3D-var), which could influence the results. In a next step the [filtered offline approach of the](#) EKF soil analysis for SURFEX will be combined with a 3D-var assimilation for the upper-air of the ALARO model. [This will be an important step towards the operational use of the EKF which is planned for the future.](#)

References

- Balsamo, G., Bouysse, F., and Noilhan, J.: A simplified bi-dimensional variational analysis of soil moisture from screen-level observations in a mesoscale numerical weather-prediction model, Q. J. Roy. Meteor. Soc., 130, 895–915, [2004-2004](#).
~~Balsamo, G., Bouysse, F., and Noilhan, J.: A simplified bi-dimensional variational analysis of soil moisture from screen-level observations in a mesoscale numerical weather-prediction model, Q. J. Roy. Meteor. Soc., 130, 895–915, 2004.~~
- Balsamo, G., Mahfouf, J.-F., and Bélair, S.: A Land Data Assimilation System for Soil Moisture and Temperature: An Information Content Study, J. Hydrometeorol., 8, 1225–1242, 2007.
- Best, M., Beljaars, A., Polcher, J., and Viterbo, P.: A proposed structure for coupling tiled surfaces with the planetary boundary layer, J. Hydrometeorol., 5, 1271–1278, 2004.
- [Boone, A., Masson, V., Meyers, T. and Noilhan, J.: The influence of the inclusion of soil freezing on simulations by a soil-vegetation-atmosphere transfer scheme, J. of Appl. Meteor., 39, 1544-1569, 2000.](#)
- Bubnová, R., Horanyi, A., and Malardel, S.: International Project ARPEGE/ALADIN, LAM Newsletter, 22, 117–130, 1993.
- Bubnová, R., Hello, G., Bénard, P., and Geleyn, J.-F.: Integration of the fully elastic equations cast in the hydrostatic pressure terrain-following coordinate in the framework of the arpege/aladin nwp system, Mon. Weather Rev., 123, 515–535, 1995.
- Catry, B., Geleyn, J., Tudor, M., Bénard, P., and Trojáková, A.: Flux-conservative thermodynamic equations in a mass-weighted framework, Tellus A, 59, 71–79, doi:10.1111/j.1600-0870.2006.00212.x, 2007.

- Côté, J., Gravel, S., Méthot, A., Patoine, A., Roch, M., and Staniforth, A.: The operational cmc-mrb global environmental multiscale (gem) model, part i: design considerations and formulation, *Mon. Weather Rev.*, 126, 1373–1395, 1998.
- de Rosnay, P., Drusch, M., Vasiljevic, D., Balsamo, G., Albergel, C., and Isaksen, L.: A simplified Extended Kalman Filter for the global operational soil moisture analysis at ECMWF, *Q. J. Roy. Meteor. Soc.*, 139, 1199–1213, doi:10.1002/qj.2023, 2012.
- Deardorff, J.: Parameterization of ground surface moisture content for use in atmospheric prediction models, *J. Appl. Meteorol.*, 16, 1182–1185, 1977.
- Deardorff, J.: Efficient prediction of ground surface temperature and moisture, with inclusion of a layer of vegetations, *J. Geophys. Res.*, 83, 1889–1903, 1978.
- Delage, Y.: Parameterising sub-grid scale vertical transport in atmospheric models under statically stable conditions, *Bound.-Lay. Meteorol.*, 82, 23–48, 1997.
- [De Meutter, P., Gerard, L., Smet, G., Hamid, K., Hamdi, R., Degrauwe, D., and Termonia, P.: Predicting small-scale, short-lived downbursts: case study with the NWP limited-area ALARO model for the Pukkelpop thunderstorm., *Mon. Wea. Rev.*, doi:10.1175/MWR-D-14-00290.1, in press., 2015.](#)
- De Troch, R., Hamdi, R., Van de Vyver, H., Geleyn, J.-F., and Termonia, P.: Multiscale performance of the alaro-0 model for simulating extreme summer precipitation climatology in belgium., *J. Climate*, 26, 8895–8915, 2013.
- Douville, H., Viterbo, P., Mahfouf, J.-F., and Beljaars, A.: Evaluation of the optimum interpolation and nudging techniques for soil moisture analysis using FIFE data, *Mon. Weather Rev.*, 128, 1733–1756, 2000.
- Draper, C. S., Mahfouf, J.-F., and Walker, J. P.: An EKF assimilation of AMSR-E soil moisture into the ISBA land surface scheme, *J. Geophys. Res.-Atmos.*, 114, D20104, doi:10.1029/2008JD011650, 2009.
- Draper, C. S., Mahfouf, J.-F., and Walker, J. P.: Root zone soil moisture from the assimilation of screen-level variables and remotely sensed soil moisture, *J. Geophys. Res.-Atmos.*, 116, D02127, doi:10.1029/2010JD013829, 2011.
- Drusch, M. and Viterbo, P.: Assimilation of screen-level variables in ECMWF's Integrated Forecast System: a study on the impact on the forecast quality and analyzed soil moisture, *Mon. Weather Rev.*, 135, 300–314, 2007.

- Drusch, M., Scipal, K., de Rosnay, P., Balsamo, G., Anderson, E., Bougeault, P., and Viterbo, P.: Towards a Kalman Filter based soil moisture analysis system for the operational ECMWF Integrated Forecast System, *Geophys. Res. Lett.*, 36, L10401, doi:10.1029/2009GL037716, 2009.
- Gerard, L.: An integrated package for subgrid convection, clouds and precipitation compatible with meso-gamma scales, *Q. J. Roy. Meteor. Soc.*, 133, 711–730, 2007.
- Gerard, L. and Geleyn, J.-F.: Evolution of a subgrid deep convection parametrization in a limited-area model with increasing resolution, *Q. J. Roy. Meteor. Soc.*, 131, 2293–2312, 2005.
- Gerard, L., Piriou, J.-M., Brožková, R., Geleyn, J.-F., and Banciu, D.: Cloud and precipitation parameterization in a meso-gamma-scale operational weather prediction model., *Mon. Weather Rev.*, 137, 3960–3977, 2009.
- Giard, D. and Bazile, E.: Implementation of a new assimilation scheme for soil and surface variables in a global NWP Model, *Mon. Weather Rev.*, 128, 997–1015, 2000.
- [Habets, F., Boone, A., and Noilhan, J.: Simulation of a Scandinavian basin using the diffusion transfer version of ISBA, *Global Planet. Change*, 38, 137–149, 2003.](#)
- Hamdi, R. and Masson, V.: Inclusion of a drag approach in the Town Energy Balance (TEB) scheme: offline 1-D evaluation in a street canyon, *J. Appl. Meteorol. Clim.*, 47, 2627–2644, 2008.
- Hamdi, R., Van de Vyver, H., and Termonia, P.: New cloud and microphysics parameterisation for use in high-resolution dynamical downscaling: application for summer extreme temperature over Belgium, *Int. J. Climatol.*, 32, 2051–2065, 2012.
- Hamdi, R., Degrauwe, D., Duerinckx, A., Cedilnik, J., Costa, V., Dalkilic, T., Essaouini, K., Jerczynki, M., Kocaman, F., Kullmann, L., Mahfouf, J.-F., Meier, F., Sassi, M., Schneider, S., Váňa, F., and Termonia, P.: Evaluating the performance of SURFEXv5 as a new land surface scheme for the ALADINcy36 and ALARO-0 models, *Geosci. Model Dev.*, 7, 23–39, doi:10.5194/gmd-7-23-2014, 2014a.
- Hamdi, R., Van de Vyver, H., De Troch, R., and Termonia, P.: Assessment of three dynamical urban climate downscaling methods: Brussels's future urban heat island under an A1B emission scenario, *Int. J. Climatol.*, 34, 978–999, 2014b.
- Hess, R.: Assimilation of screen-level observations by variational soil moisture analysis, *Meteorol. Atmos. Phys.*, 77, 145–154, 2001.
- Lafore, J. P., Stein, J., Asencio, N., Bougeault, P., Ducrocq, V., Duron, J., Fischer, C., Héreil, P., Mascart, P., Masson, V., Pinty, J. P., Redelsperger, J. L., Richard, E., and Vilà-Guerau de Arellano, J.: The Meso-NH Atmospheric Simulation System. Part I: adiabatic formulation and control simulations, *Ann. Geophys.*, 16, 90–109, doi:10.1007/s00585-997-0090-6, 1998.

- Lebeaupin, C.: Etude du couplage ocean-atmosphere associe aux episodes de pluies intenses en region mediterrannee, Ph. D. thesis, University Paul Sabatier, Toulouse, France, 2007.
- Mahfouf, J.-F.: Assimilation of satellite-derived soil moisture from ASCAT in a limited-area NWP model, *Q. J. Roy. Meteor. Soc.*, 136, 784–798, 2010.
- Mahfouf, J.-F. and Bliznak, V.: Combined assimilation of screen-level observations and radar-derived precipitation for soil moisture analysis, *Q. J. Roy. Meteor. Soc.*, 137, 709–722, 2011.
- Mahfouf, J.-F., Douville, H., Viterbo, P., Beljaars, A., and Saarinen, S.: A revised land surface analysis scheme in the Integrated Forecasting System, *ECMWF Newsl.*, 88, 8–13, 2000.
- Mahfouf, J.-F., Bergaoui, K., Draper, C., Bouysse, F., Taillefer, F., and Taseva, L.: A comparison of two off-line soil analysis schemes for assimilation of screen level observations, *J. Geophys. Res.-Atmos.*, 114, D08105, doi:10.1029/2008JD011077, 2009.
- Mailhot, J., Bélair, S., Lefèvre, L., Bilodeau, B., Desgagné, M., Girard, C., Glazer, A., Leduc, A., Méthot, A., Patoine, A., Plante, A., Rahill, A., Robinson, T., Talbot, D., Tremblay, A., Vaillancourt, P., Zadra, A., and Qaddouri, A.: The 15-km version of the Canadian regional forecast system, *Atmos. Ocean*, 44, 133–149, 2006.
- Masson, V.: A physically-based scheme for the urban energy budget in atmospheric models, *Bound.-Lay. Meteorol.*, 94, 357–397, 2000.
- Masson, V. and Seity, Y.: Including atmospheric layers in vegetation and urban offline surface schemes, *J. Appl. Meteorol. Clim.*, 48, 1377–1397, 2009.
- Masson, V., Le Moigne, P., Martin, E., Faroux, S., Alias, A., Alkama, R., Belamari, S., Barbu, A., Boone, A., Bouysse, F., Brousseau, P., Brun, E., Calvet, J.-C., Carrer, D., Decharme, B., Delire, C., Donier, S., Essauini, K., Gibelin, A.-L., Giordani, H., Habets, F., Jidane, M., Kerdran, G., Kourzeneva, E., Lafaysse, M., Lafont, S., Lebeaupin Brossier, C., Lemonsu, A., Mahfouf, J.-F., Marguinaud, P., Mokhtari, M., Morin, S., Pigeon, G., Salgado, R., Seity, Y., Taillefer, F., Tanguy, G., Tulet, P., Vincendon, B., Vionnet, V., and Voldoire, A.: The SURFEXv7.2 land and ocean surface platform for coupled or offline simulation of earth surface variables and fluxes, *Geosci. Model Dev.*, 6, 929–960, doi:10.5194/gmd-6-929-2013, 2013.
- Mironov, D., Heise, E., Kourzeneva, E., Ritter, B., Schneider, N., and Terzhevik, A.: Implementation of the lake parameterisation scheme flake into the numerical weather prediction model cosmo, *Boreal Environ. Res.*, 15, 218–230, 2010.
- Mitchell, K. E., Lohmann, D., Houser, P. R., Wood, E. F., Schaake, J. C., Robock, A., Cosgrove, B. A., Sheffield, J., Duan, Q., Luo, L., Higgins, R. W., Pinker, R. T., Tarpley, J. D., Lettenmaier, D. P., Marshall, C. H., Entin, J. K., Pan, M., Shi, W., Koren, V., Meng, J., Ramsay, B. H., and Bailey, A. A.:

- The multi-institution North American Land Data Assimilation System (NLDAS): Utilizing multiple GCIP products and partners in a continental distributed hydrological modeling system, *J. Geophys. Res.-Atmos.*, 109, D07S90, doi:10.1029/2003JD003823, 2004.
- Noilhan, J. and Mahfouf, J.-F.: The ISBA land surface parameterisation scheme, *Global Planet. Change*, 13, 145–159, 1996.
- Noilhan, J. and Planton, S.: A simple parameterization of land surface processes for meteorological models, *Mon. Weather Rev.*, 117, 536–549, 1989.
- Polcher, J., McAvaney, B., Viterbo, P., Gaertner, M.-A., Hahmann, A., Mahfouf, J.-F., Noilhan, J., Phillips, T., Pitman, A., Schlosser, C., Schulz, J.-P., Timbal, B., Verseghy, D., and Xue, Y.: A proposal for a general interface between land-surface schemes and general circulation models, *Global Planet. Change*, 19, 263–278, 1998.

Table 1. Percentage of gridpoints in which an oscillation occurs at the end of the run (and thus influencing the Jacobian value) and in total (i.e. including those during the run that do not influence the Jacobian value).

	Offline		Coupled	
	End	Total	End	Total
$\frac{\delta RH}{\delta W_2}$	4.8 %	24 %	11 %	53 %
$\frac{\delta T}{\delta W_2}$	5.2 %	21 %	13 %	55 %
$\frac{\delta RH}{\delta T_2}$	2.4 %	21 %	11 %	66 %
$\frac{\delta T}{\delta T_2}$	3.6 %	10 %	11 %	57 %

Table 2. Overview of the RMSE and BIAS scores for T_{2m} and RH_{2m} averaged over the 13 stations and over July 2010.

	Offline		Coupled	
	<u>REFofl</u>	<u>FILofl</u>	<u>REFcpl</u>	<u>FILcpl</u>
<u>T2m RMSE (K)</u>	<u>2.2</u>	<u>2.2</u>	<u>2.2</u>	<u>2.2</u>
<u>T2m BIAS (K)</u>	<u>0.1</u>	<u>0.1</u>	<u>0.1</u>	<u>-0.1</u>
<u>RH2m RMSE (%)</u>	<u>15.2</u>	<u>15.0</u>	<u>15.2</u>	<u>14.5</u>
<u>RH2m BIAS (%)</u>	<u>-4.9</u>	<u>-4.6</u>	<u>-4.5</u>	<u>-3.2</u>

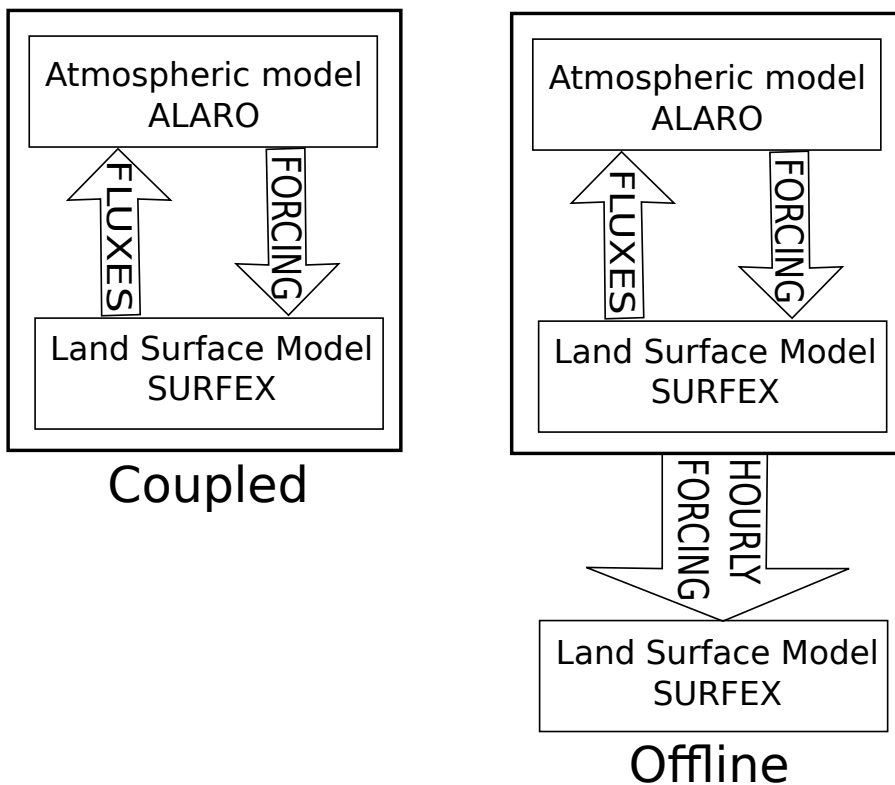


Figure 1. Schematic overview of the coupled and offline set-ups, [used for the perturbed runs of the EKF.](#)



Figure 2. The operational 4 km ALARO-Belgium domain. The indicated locations will be used in the following sections. Beitem: 50.905° N, 3.123° E (Belgium). Location A: 50.534° N, 4.497° E (Belgium). Location B: 52.092° N, 9.488° E (Germany). Location C: 52.082° N, 9.722° E (Germany)

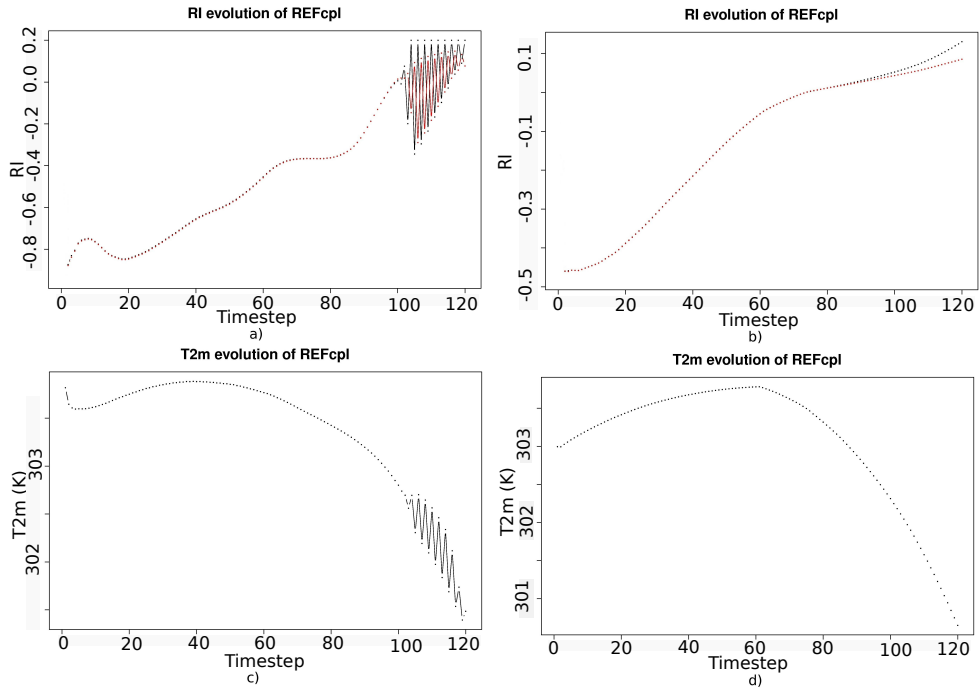


Figure 3. Evolution of the Richardson number (RI , top) and T_{2m} (bottom) during a 6 h coupled run for 2 July 2010 from 12:00 until 18:00 UTC in location B (left) and location C (right). In the top figures, the Richardson number for the lowest level is shown as it is calculated in SURFEX (black) and as it would be calculated in Alaro (red).

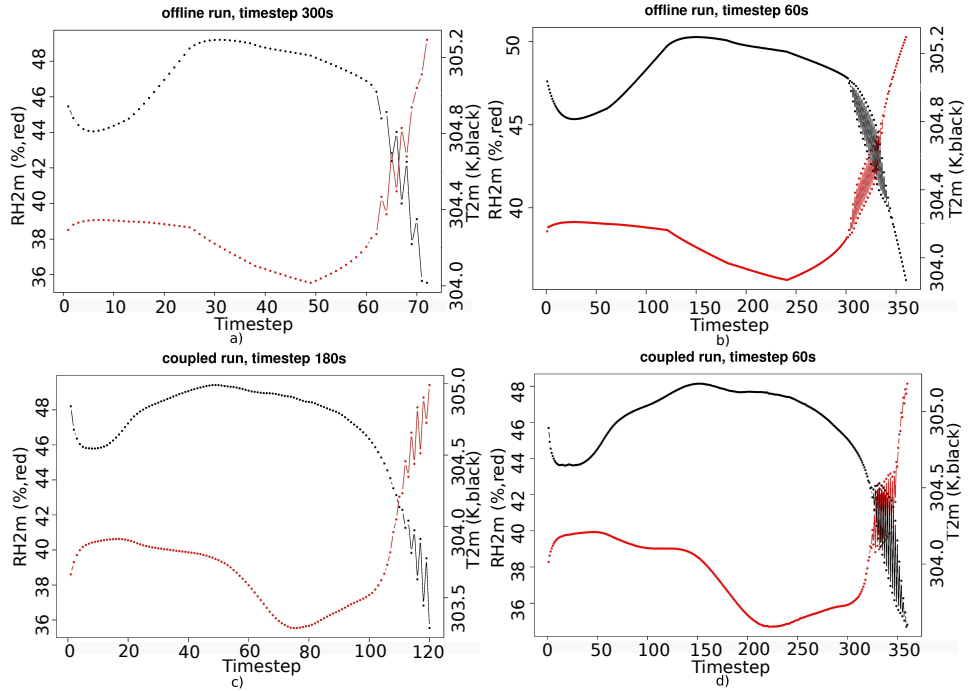


Figure 4. Evolution of T_{2m} (black) and RH_{2m} (red) during a 6 h SURFEX reference run for 2 July 2010 from 12:00 to 18:00 UTC in location A (output plotted every timestep). The top left figure shows the results for an offline run with timestep 300 s, the top right figure an offline run with a timestep of 60 s. The bottom left figure shows a coupled run with a timestep of 180 s and the bottom right figure a coupled run with a timestep of 60 s.

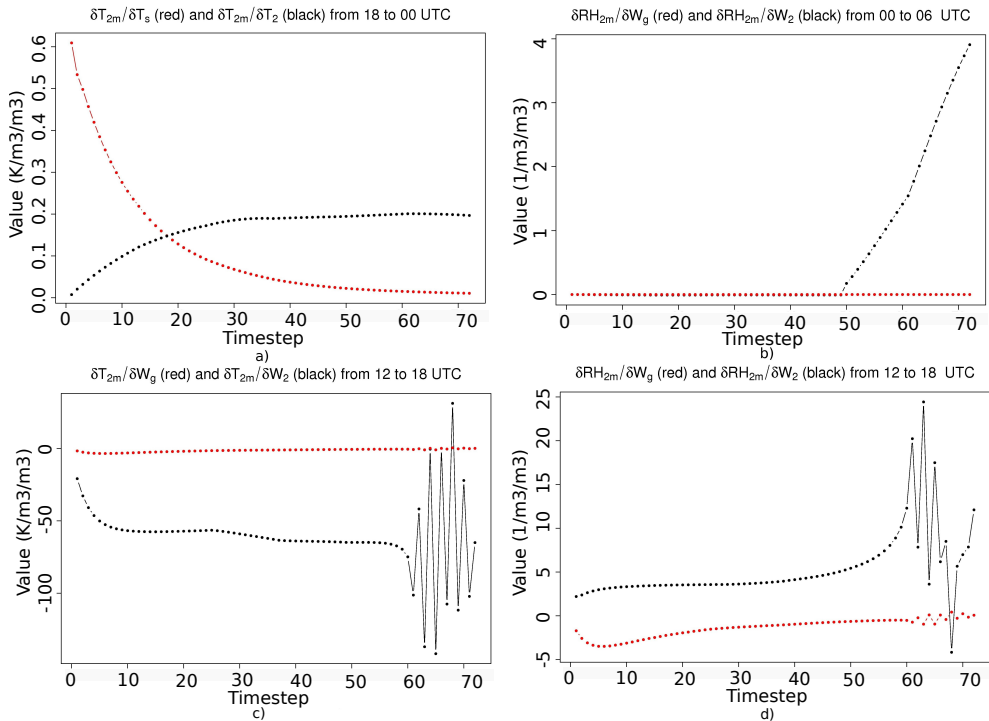


Figure 5. Evolution of the Jacobian value during a 6 h offline SURFEX run for 2 July 2010 in location A (output plotted every timestep). Perturbation size for the initial perturbed states is 10^{-4} . In the upper left corner $\delta T_{2m}/\delta T_s$ (red) and $\delta T_{2m}/\delta T_2$ (black) are shown from 18:00 to 00:00 UTC, in the upper right corner $\delta RH_{2m}/\delta W_g$ (red) and $\delta RH_{2m}/\delta W_2$ (black) from 00:00 to 06:00 UTC, in the lower left corner $\delta T_{2m}/\delta W_g$ (red) and $\delta T_{2m}/\delta W_2$ (black) from 12:00 to 18:00 UTC and in the lower right corner $\delta RH_{2m}/\delta W_g$ (red) and $\delta RH_{2m}/\delta W_2$ (black) from 12:00 to 18:00 UTC.

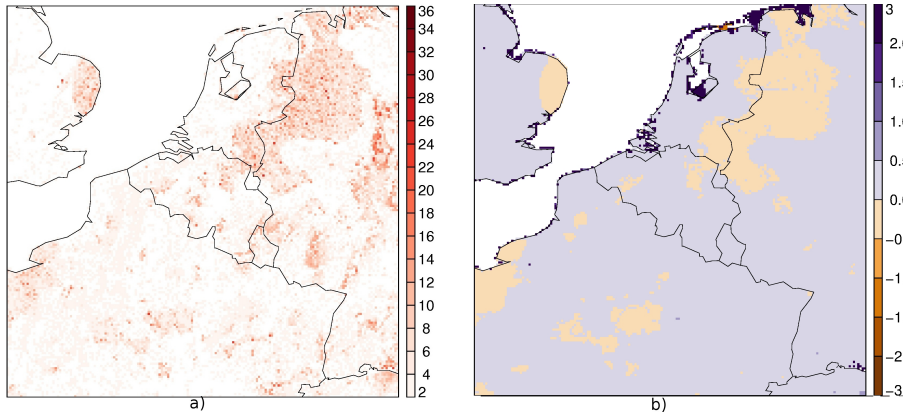


Figure 6. The number of the oscillations in every gridpoint for $\delta RH_{2m}/\delta W_2$ (left) and the Soil Wetness Index (SWI) of the deep soil layer (right) on 2 July 2010 for the offline reference run (REFofl) from 12:00 to 18:00 UTC.

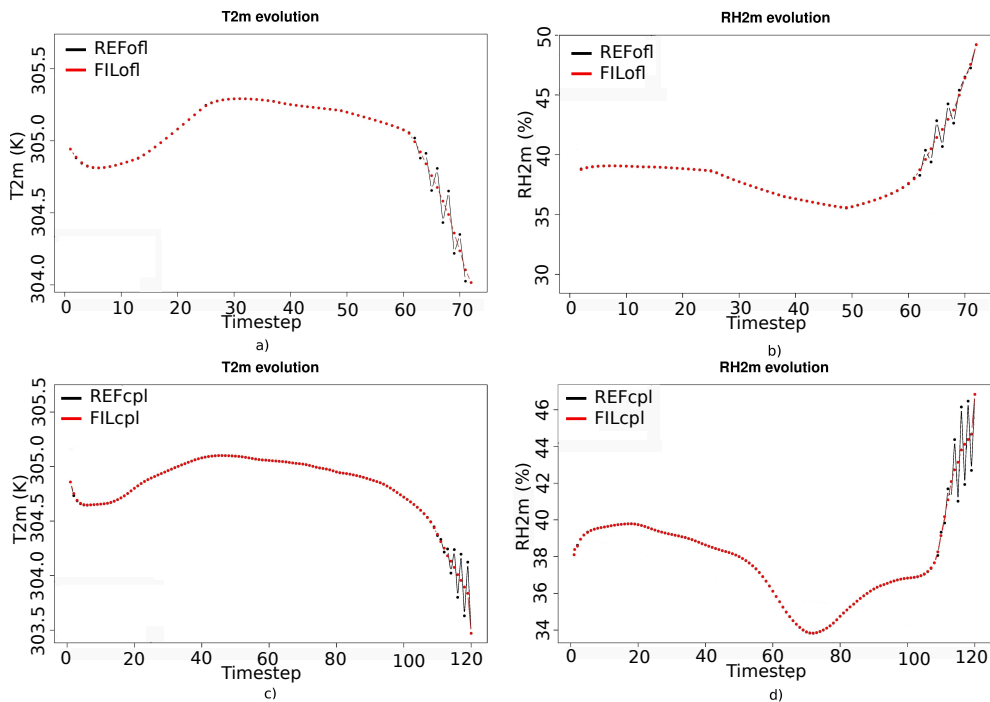


Figure 7. Evolution of T_{2m} (left) and RH_{2m} (right) in location A for the offline (top) and coupled (bottom) reference run (REF, black) and the filtered run (FIL, red).

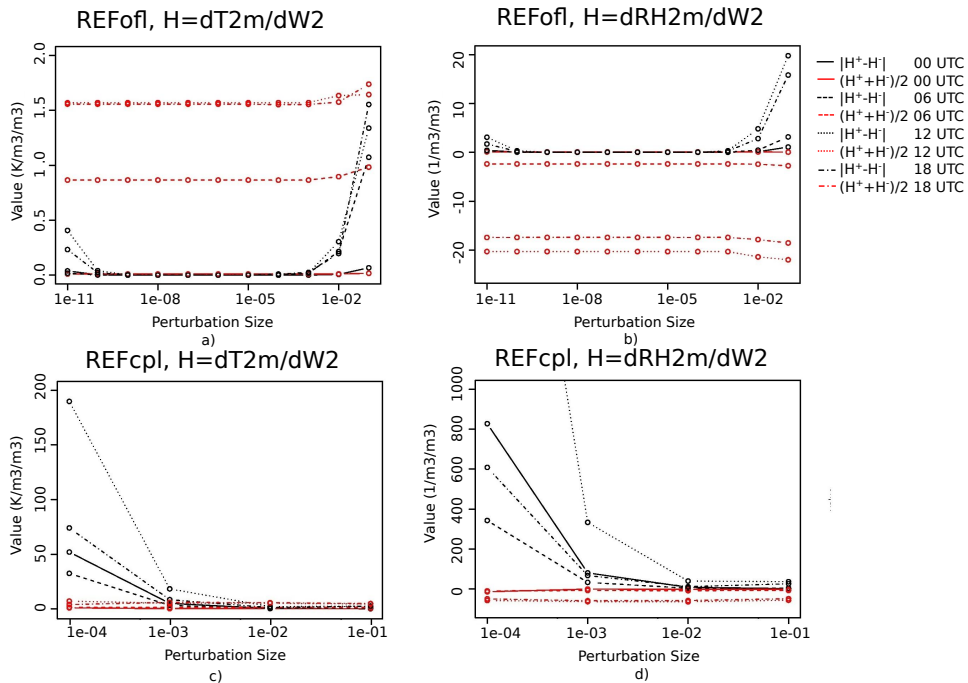


Figure 8. Comparison of the optimal perturbation size for the offline (top) and coupled (bottom) approach. $|H^+ - H^-|$ (black) and $H^+ + H^-/2$ (red) for different perturbation sizes on 2 July 2010 at 00:00, 06:00, 12:00 and 18:00 UTC averaged over the whole domain with $H = \delta T_{2m}/\delta W_2$ (left) and $H = \delta RH_{2m}/\delta W_2$ (right). **The offline approach has a**

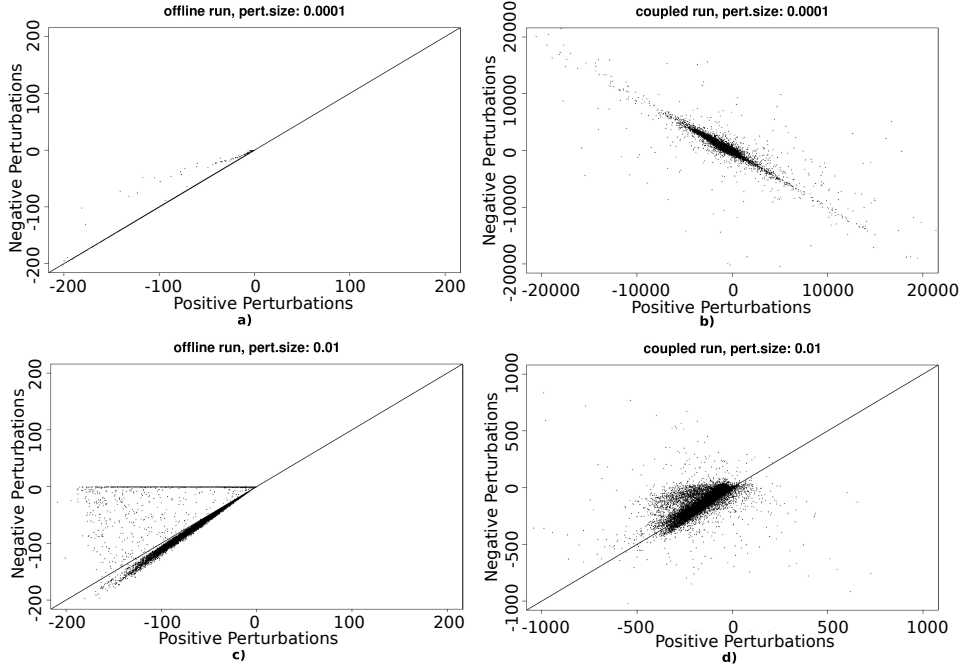


Figure 9. Assessment of the linearity assumption for the calculation of the Jacobians by means of finite differences. Plot of the Jacobian values for $\delta T_{2m}/\delta W_2$ on 2 July smaller-optimal-perturbation size (black-lines) and smaller-jacobian-2010 12:00 UTC of the positive perturbations against the values (red-lines) of the negative perturbations.

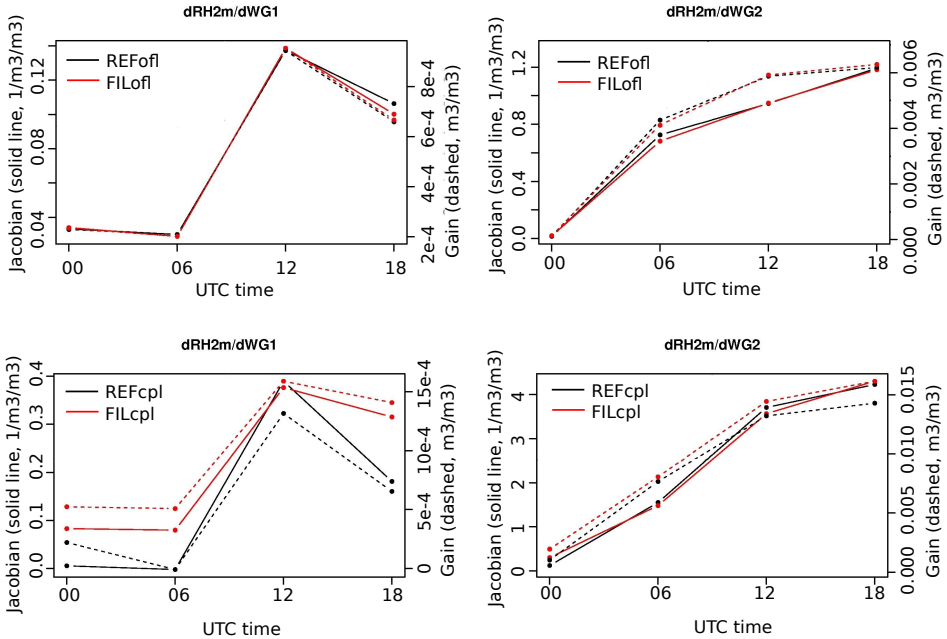


Figure 10. Jacobian and gain values for the $\delta RH_{2m}/\delta W_s$ and $\delta RH_{2m}/\delta W_2$ averaged over the whole domain on 2 July 2010 for REFofl, FILofl, REFcpl and FILcpl for 00:00, 06:00, 12:00 and 18:00 UTC. The solid lines represent the Jacobian values (values on the left vertical axis), the dashed lines represent the gain values (values on the right vertical axis).

Assesment of the linearity assumption for the calculation of the Jacobians by means of finitie differences. Plot of the Jacobian values for $\delta T_{2m}/\delta W_2$ on 2 July 2010 12:00UTC of the positive perturbations against the values of the negative perturbations. The linearity assumption is better approximated for the offline approach.

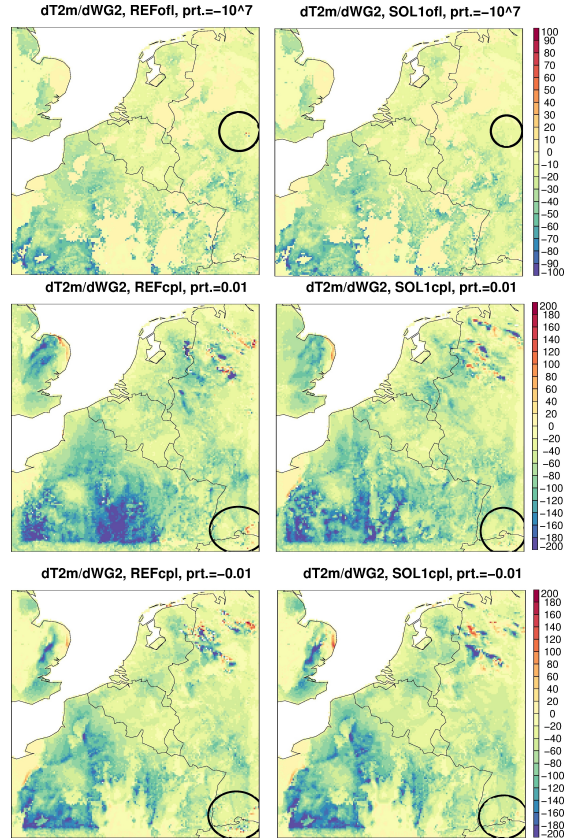


Figure 11. Map of the Jacobian and gain value for $\delta T_{2m} / \delta W_2$ for 6 July 2010 at 18:00 UTC for REF (left) and FIL (right) of the offline (first row) and coupled (second and third row) version. The perturbation size for the offline runs was 10^{-7} and for the coupled runs $10^{0.01}$ (second row) and $10^{-0.01}$ (third row), i.e. these are the optimal perturbation sizes.

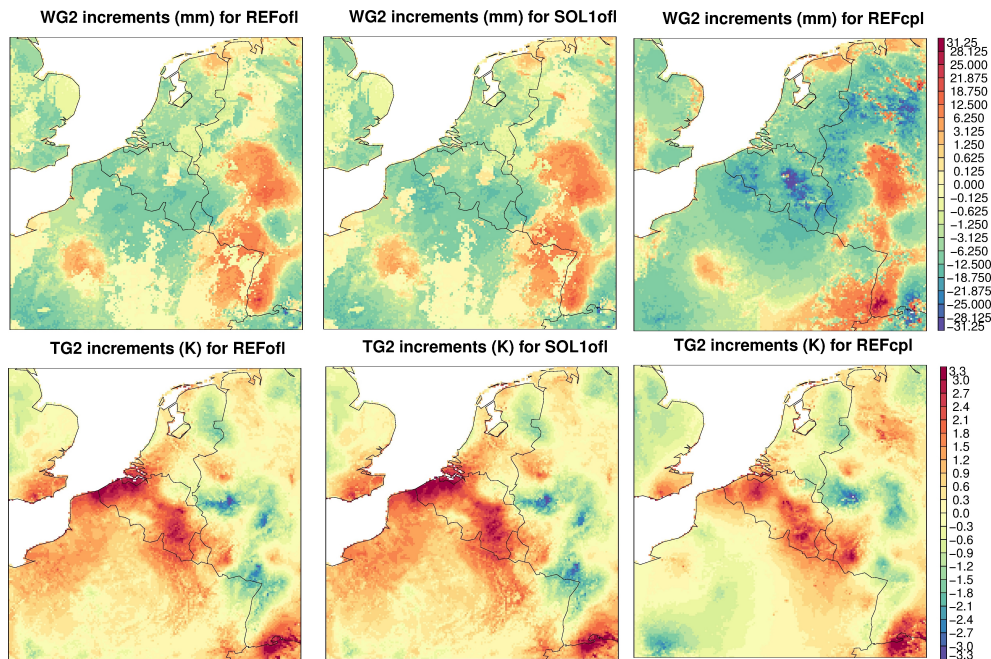


Figure 12. Map of the increments (analysis-background) for W_2 (in mm) and T_2 (in K) on 6 July 2010 for REFofl, FILofl and REFcpl.

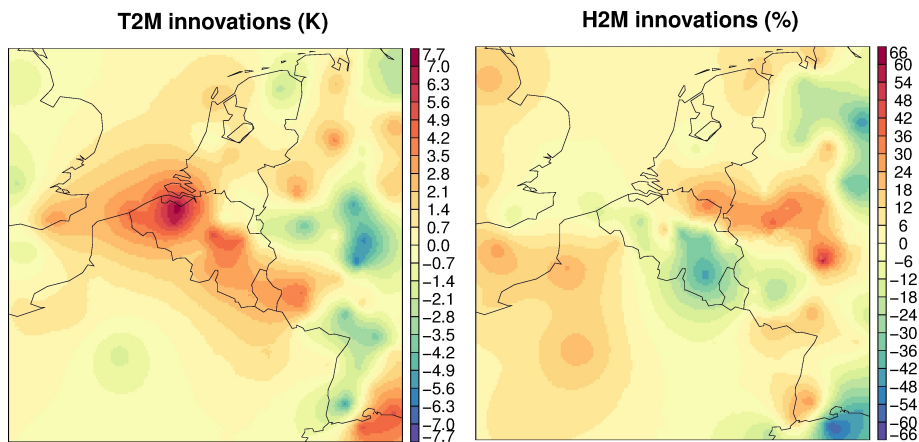


Figure 13. Map of the innovations (observation-background) for T_{2m} (in K) and RH_{2m} (in %) on 6 July 2010.

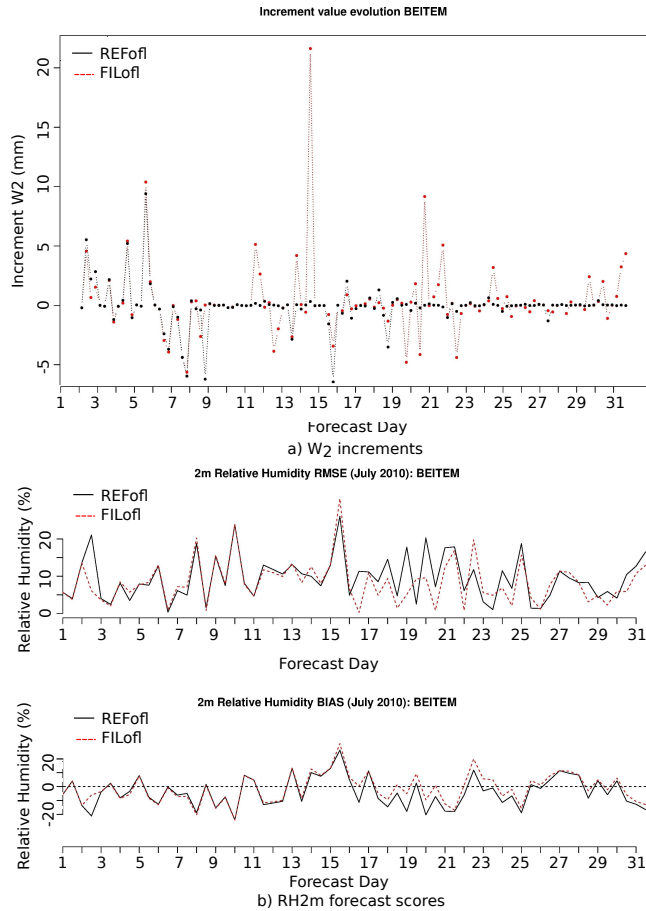


Figure 14. Evolution of the W_2 increments and RH_{2m} forecast scores at a forecast range of 6 h (RMSE and BIAS) during July 2010 in Beitem (Belgium) for REFOI (black) and FILofI (red).

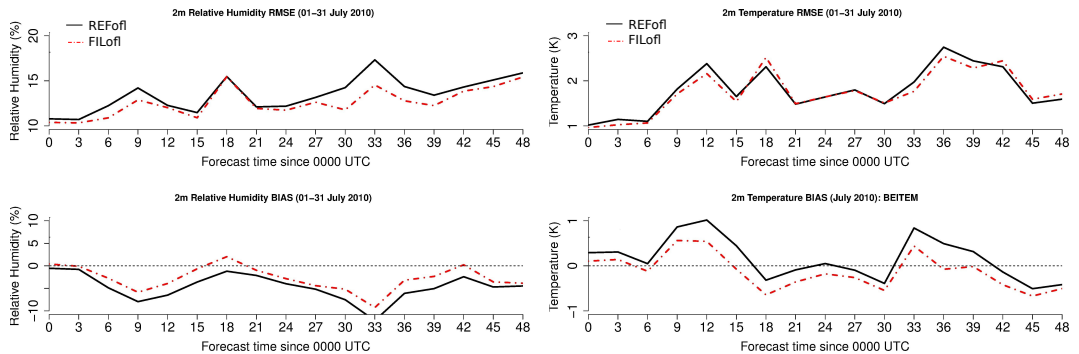


Figure 15. Forecast scores (BIAS and RMSE) for RH_{2m} and T_{2m} for all forecast ranges of the runs at 00:00 UTC averaged over July 2010 in Beitem (Belgium) for REFOfl (black) and FILofl (red).

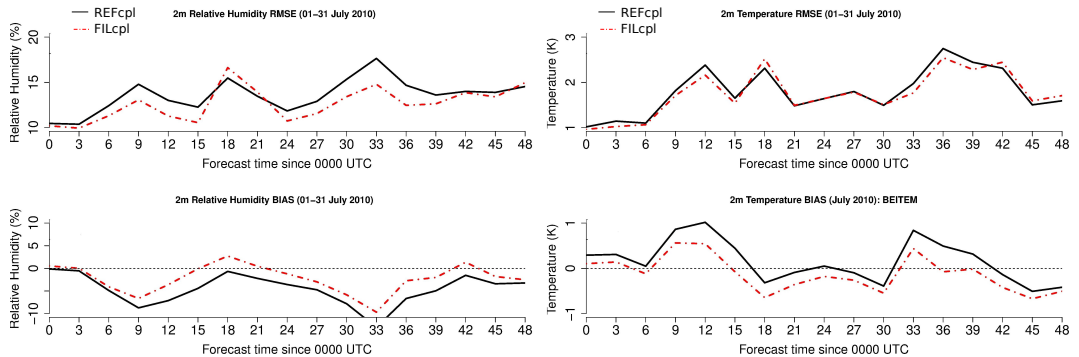


Figure 16. Forecast scores (BIAS and RMSE) for RH_{2m} and T_{2m} for all forecast ranges of the runs at 00:00 UTC averaged over July 2010 in Beitem (Belgium) for REFcpl (black) and FILcpl (red).