

# Testing the performance of state-of-the-art dust emission schemes using DO4Models field data.

K. Hausteин<sup>1</sup>, R. Washington<sup>1</sup>, J. King<sup>1</sup>, G. Wiggs<sup>1</sup>, D. S. G. Thomas<sup>1</sup>, F. D. Eckardt<sup>2</sup>, R. G. Bryant<sup>3</sup>, and L. Menut<sup>4</sup>

<sup>1</sup>School of Geography and the Environment, University of Oxford, Oxford, UK

<sup>2</sup>University of Cape Town, Environmental and Geographical Science, Cape Town, South Africa

<sup>3</sup>Department of Geography, University of Sheffield, Sheffield, UK

<sup>4</sup>Laboratoire de Météorologie Dynamique, Ecole Polytechnique, Palaiseau, France

**Abstract.** Within the framework of the Dust Observations for Models (DO4Models) project, the performance of three commonly used dust emission schemes is investigated in this paper using a box model environment. We constrain the model with field data (surface and dust particle properties as well as meteorological parameters) obtained from a dry lake bed with a crusted surface in Botswana during a three month period in 2011. Our box model results suggest that all schemes fail to reproduce the observed horizontal dust flux. They overestimate the magnitude of the flux by several orders of magnitude. The discrepancy is much smaller for the vertical dust emission flux, albeit still overestimated by up to an order of magnitude. The key parameter for this mismatch is the surface crusting which limits the availability of erosive material even at higher wind speeds. The second-most important parameter is the soil size distribution. Direct dust entrainment was inferred to be important for several dust events, which explains the smaller gap between modelled and measured vertical dust fluxes. We conclude that both features, crusted surfaces and direct entrainment, need to be incorporated in dust emission schemes in order to represent the entire spectra of source processes. We also conclude that soil moisture exerts a key control on the threshold shear velocity and hence the emission threshold of dust in the model. In the field, the state of the crust is the controlling mechanism for dust emission. Although the crust is related to the soil moisture content to some extent, we are not as yet able to deduce a robust correlation between state of crust and soil moisture.

(Huneus et al., 2011; Knippertz and Todd, 2012; Klose and Shao, 2012). Numerical models are a key tool for predicting weather and climate. Given the interaction between mineral dust and the climate system (e.g. radiation (Pérez et al., 2006), clouds (Bangert et al., 2012), and weather systems such as tropical cyclones, Evan et al., 2006) it is important for models to simulate the dust cycle well. Key elements of model dust emission schemes are largely based on empirical data from wind tunnel experiments. Their emitted dust loadings have often been tuned to match global (Pérez et al., 2011; Huneus et al., 2011) or regional (Laurent et al., 2006; Heinold et al., 2009; Hausteин et al., 2012) satellite or in-situ dust data (Holben et al., 1998; Remer et al., 2002; Kahn et al., 2005) rather than attending to the efficacy of the emissions in key regions. None of the currently existing schemes has been thoroughly assessed with field data at the scale of a numerical model grid box.

Prompted by this apparent gap in appropriate data with which to evaluate numerical model dust emission schemes, DO4Models aims to provide dust source-area processed data tailored to regional climate model grid-box resolution (12km × 12km) in order to test the performance of three dust emission schemes. These data have been obtained from a remote source area, Sua Pan, Botswana, undisturbed from background dust aerosol. In this paper we report on the characteristics of three emission schemes and quantitatively evaluate their performance at process level.

Using a box model approach and DO4Models field campaign data from 2011, we first quantify the magnitude and frequency of the simulated dust emission fluxes by comparing them with observed fluxes at the field sites. Three state-of-the-art schemes are employed: Marticorena and Bergametti (1995) (hereinafter MB95), the scheme of Alfaro and Gomes (2001) (AG01), and that of Shao (2004) (SH04). Secondly, we examine the impact of three sand transport formulations upon the simulated dust fluxes: the model of Owen (1964) (OW64), Lettau and Lettau (1978) (LL78), and Marticorena and Bergametti (1995) (which itself is based on White, 1979). These formulations predict a range of sand transport rates that vary by an order of magnitude and eventually control the dust production of the model as discussed

## 1 Introduction

Atmospheric mineral dust is the dominant aerosol species in terms of mass (Andreae, 1996; Textor et al., 2006), yet it is one of the major sources of uncertainty in the climate system (Forster et al., 2007; Boucher et al., 2013) despite recent efforts to reduce these uncertainties from a remote sensing (Ginoux et al., 2010, 2012; Ashpole and Washington, 2012; Brindley et al., 2012), physico-chemical (Redmond et al., 2010; Formenti et al., 2011), or modelling point of view

*Correspondence to:* K. Hausteин (karsten.hausteин@ouce.ox.ac.uk)

and illustrated in Shao (2008) (their Fig. 6.9) and Sherman and Li (2012) (their Fig. 4). Thirdly, we test the impact the input parameters have on the sandblasting mass efficiency  $\alpha$  (vertical-to-horizontal-mass-flux-ratio) and the threshold friction velocity  $u_{*thr}$ . The analysis is associated with an assessment of the box model performance as a function of surface roughness length, soil moisture content, and soil particle size distribution. The sensitivity of the simulated emission fluxes to observed soil and surface properties is discussed in the context of apparent model mismatches. Critical model components responsible for the discrepancies are identified.

The background to state-of-the-art dust emission schemes and an introduction of the observational data obtained during the field campaign is given in Sect. 2. The parameterizations used in the newly developed box model are introduced in Sects. 3.1–3.3, including the model evaluation strategy (Sect. 3.4). We analyze the model performance in Sects. 4.1–4.3 and discuss their implications in Sect. 4.4. Our findings are summarized in Sect. 5.

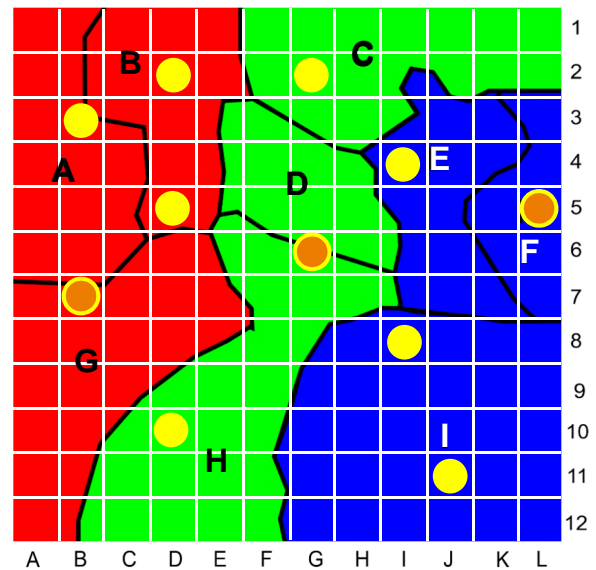
## 2 Background

The dust emission process is commonly described by three major mechanisms. Dust emission by (1) aerodynamic lift, by (2) saltation bombardment (sandblasting), and by (3) disintegration of aggregates (auto-abrasion) as illustrated in Shao et al. (2011b). Several parameterization schemes have been developed to describe these mechanisms (e.g. Marticorena and Bergametti, 1995; Shao and Lu, 2000; Alfaro and Gomes, 2001; Shao, 2004). See Darmenova et al. (2009) for a comprehensive review. Auto-abrasion is considered only by Shao (2004). Typically, each scheme parameterizes the following quantities in separate steps or modules: (a) the threshold friction velocity for particle movement, (b) the horizontal saltation flux (defined as the vertical integral of the streamwise particle flux density) which describes the motion of saltating particles, and (c) the vertically emitted dust flux (defined as the emitted dust mass concentration per unit area and time) which determines the dust loading in the first model layer.

The threshold friction velocity, defined as the minimum friction velocity required to initiate the motion of soil grains, is specified over a smooth and dry surface ( $u_{*dry}$ ), requiring a drag partition correction to account for roughness elements at the surface, and a moisture correction to reflect moisture content in the soil which acts to inhibit the emissions. The saltation flux is proportional to the shear velocity, represented by a large array of parameterization options (Sherman and Li, 2012). The smooth threshold friction velocity, the saltation flux as well as the vertical emission flux are also functions of the size distribution and chemical composition of the soil particles (Kang et al., 2011).

Field data against which to test model output were gathered by the Dust Observations for Models (DO4Models) field

campaign between 24th July and 14th October 2011. This campaign was focused on a  $12 \text{ km}^2$  measurement grid at Sua Pan in Botswana ( $20.55^\circ \text{ S}$  and  $25.95^\circ \text{ E}$ ). Sua Pan is one of southern Africa's most important aeolian dust source areas (Bryant et al., 2007) and, as part of the  $3400 \text{ km}^2$  Makgadikgadi pan complex, it experiences ephemeral flooding of its surface (Eckardt et al., 2008). This flooding results in the development of a highly uneven polygonal salt crust of varying morphology and in various states of formation and degradation. As such the crust presents a surface which is highly variable and dynamic in both roughness and erodibility (Nield et al., 2013, 2015) with subsequent impact on the distribution of sites of aeolian dust emission. Such a surface presents a significant challenge for dust emission schemes as most are not explicitly developed for crusted surfaces as they can be found in many dust source regions worldwide (Nickling and Gillies, 1993; Rice et al., 1996; Ishizuka et al., 2008; Washington et al., 2009). Sua Pan has been chosen for this field campaign because of its remote situation from other major sources which allows for an undisturbed characterization of the emitted dust what is particularly relevant for the estimation of the vertical dust flux.



**Fig. 1.** The Sua Pan  $12 \times 12 \text{ km}$  grid with 3 AWS sites (orange dots) and another 8 MET/MET+ sites (yellow dots). Through combined use of a range of remote sensing data, three zones which allowed for a distinct interpretation in terms of crust types and potential for erodibility were selected. The colours indicate different soil conditions present throughout the campaign. **Red:** Well developed salt crust which would not be easily erodible (A/B/G); **Green:** Intermediary salt crusts that were either not as well developed as in A, B and G or significantly less moist than E, F and I; **Blue:** Relatively moist surfaces that were most likely to have been either re-set (dissolved/reworked) or degraded (partially dissolved/reworked) by recent flooding and dilute inflow. The relatively high moisture content of these surfaces would render them as relatively non-erodible.

Our field measurement arrays consisted of 11 meteorological stations distributed throughout the grid located within zones of differing surface characteristics, as interpreted from remote sensing imagery (Fig. 1). Each station is identified by a label representing its relative horizontal (A-L) and vertical (1-12) position within the 12 km<sup>2</sup> grid. Each site was equipped with an anemometer mast measuring wind velocity at heights of 0.25, 0.47, 0.89, 1.68, 3.18, and 6.0 m (AWS, MET/MET+ sites). Wind velocity data were averaged over a 1 minute period to allow calculation of shear velocity ( $u_*$ ) and aerodynamic roughness ( $z_0$ ). A Sensit mass erosion monitor was installed on the surface at each site to provide 1 minute resolution data on sand saltation activity (within 5 cm above the surface) and BSNE (Big Spring Number Eight) dust traps (Fryrear, 1986) were positioned at heights of 0.25, 0.47, 0.89, and 1.89 m to determine the average horizontal sediment flux over periods of 14 days. Data from the BSNEs allowed for the estimation of the integrated vertical flux and are used to convert the Sensit frequency data into a horizontal mass flux. At 9 of the meteorological stations (AWS, MET+ sites) DustTrak DRX aerosol monitors were installed at a height of 3.18 m to record concentration of PM<sub>1</sub>, PM<sub>2.5</sub>, PM<sub>10</sub>, PM<sub>tot</sub> particles at 2 minute temporal resolution. Thetaprobe moisture sensors were installed into the pan surface at each site to measure moisture content integrated across depths of 0-3 cm and 9-12 cm. Automatic Weather Stations were deployed at 3 AWS sites. Two CIMEL sun photometers were deployed inside (at the centre) and outside (upwind) of the grid in order to obtain the atmospheric Aerosol Optical Depth (AOD) and the Ångström exponent. Finally, the threshold shear velocity for dust emission was assessed at 98 locations across the measurement grid using a Pi-SWERL wind tunnel (King et al., 2011), providing a potential dust source map for the grid.

Surface sediment at each site was sampled and returned to Oxford for grain size analysis using a Malvern laser granulometer. This was used in "wet" fully dispersed mode (assumed to represent the dust in suspension), and also in "dry" minimally dispersed mode using an air dispersion unit (which maintains and measures any particle agglomerates which might be assumed to comprise the saltation flux). The sediment sampled included the surface crust (0-0.5 cm thick, where present), a dry "fluff" layer often present beneath the crust (1-3 cm thick), and a deeper clay soil unit beneath (see Table 1).

To drive the box model, we are using roughness length data ( $z_0$ ) which were assumed to be constant in each direction for three consecutive days, derived from 10min wind observations. Observed gravimetric soil moisture content at 0-3cm depth ( $w$ ) which closely matches the soil moisture provided by atmospheric models in their uppermost soil layer is used. For the purpose of grid-wide box model comparison, we take the arithmetic mean values of  $z_0$  and  $w$  in 2011 (Table 1). Also, the minimally and the fully disturbed soil size distributions are used (Table 1). For the direct model

comparison, the shear velocity ( $u_*$ ) is used. It is obtained using the measured wind profile data and the surface roughness data. The saltation flux  $Q_{OBS}$  is assumed to be proportional to the Sensit counts, calibrated using the BSNE data. The vertical distribution of the dust mass collected in the BSNEs follows an exponential function which is in good agreement with empirical considerations. The total vertical dust flux ( $F_{OBS}$ ) is estimated following the procedure of Gillette (1974) from the DustTrak concentration data in the following way:  $F_{OBS} = (PM_{tot} - PM_{2.5}) \cdot u'_*$ .  $PM_{tot}$  is the total and  $PM_{2.5}$  is the particulate matter smaller than 2.5 μm in diameter. The fluctuating component of the shear velocity is calculated as  $u'_* = u_* - \bar{u}_*$ , with  $\bar{u}_*$  as the mean shear velocity at each site during the campaign period. As we are interested in the positive dust flux,  $F_{OBS}$  is considered as contributing emission flux only if  $F_{OBS,t} - F_{OBS,t-1} > \sigma$ , with  $\sigma$  as the standard deviation of  $F_{OBS}$ . The time interval  $\Delta t$  is two minutes for all parameters.

The deduced fluxes are not a direct flux measurement. Both,  $Q_{OBS}$  and  $F_{OBS}$  are subject to uncertainties. The uncertainty associated with  $Q_{OBS}$  is likely quite high relative to the value for most of the site measurements due to the very limited quantity measured by the BSNE during each collection interval. However, for the sites that experienced relatively higher amounts of  $Q_{OBS}$  this uncertainty is greatly reduced because more mass was collected at each collection interval to calibrate the Sensit record. The  $F_{OBS}$  uncertainty is rooted in the error of the DustTrak and the flux calculation methodology. The DustTrak used in this study has shown to have very small errors (~ 10%) for PM<sub>2.5</sub> values when compared with a TEOM and reasonable error (~ 15%) for PM<sub>tot</sub> when compared with Condensation Particle Counter (Wang et al., 2009). When combined with the high measurement frequency capabilities of the DustTrak, this instrument outperforms most other nephelometers for PM<sub>10</sub> measurements and far exceeds the performance of aerosol optical particle counters (Wang et al., 2009; Watson et al., 2011). The vertical dust flux calculation methodology will underestimate the total dust flux when compared to theoretical estimates from a removal of both the PM<sub>2.5</sub> mass fraction and the very high frequency wind fluctuations. This bias then minimizes the likelihood of including dust emission fluxes that are only entraining PM<sub>2.5</sub> particles (at 3.18 m height) or that are associated with smaller fluctuations in  $u_*$ . The former is of a minimal concern as mostly all dust emission mass fluxes from crusted surfaces contain a larger portion of PM<sub>10</sub> than PM<sub>2.5</sub> (Shao et al., 2011a). The latter bias does increase the uncertainty of the calculated  $F_{OBS}$  as it omits mechanisms such as dust devils that aerodynamically entrain dust particles through thermal instabilities. Although this is an important mechanism for dust uplift from crusted sources it is not a process captured by the dust emission schemes tested in this paper and therefore introduces minimal uncertainty in the comparative results.

Since no severe dust event could be observed in the course

**Table 1.** Minimally and fully disturbed soil size distribution for each field site at Sua Pan. The mass fraction (in percent) for each parent soil type is given. FMS is fine/medium sand and CS is coarse sand. (m) refers to minimally disturbed and (f) to fully disturbed soil. (\*) In a few cases the fluff material could not be sampled. The non-emissive crust sample is used instead. Two right hand columns are average surface roughness ( $\varnothing z_0$  in *cm*) and soil moisture content ( $\varnothing w$  in  $m^3 \cdot m^{-3}$ ) at each site and averaged over the grid.

Site	Type	Clay (m)	Silt (m)	FMS (m)	CS (m)	Clay (f)	Silt (f)	FMS (f)	CS (f)	$\varnothing z_0$	$\varnothing w$
<b>B3</b>	MET+	0.0	22.3	52.4	25.3	10.7	63.5	25.7	0.1	0.236	0.060
<b>B7</b>	AWS	0.0	8.8	36.7	54.5	10.1	72.7	17.1	0.1	0.200	0.151
<b>D2</b>	MET	0.0	4.6	24.6	70.7	13.9	74.3	11.7	0.1	N/A	N/A
<b>D5</b>	MET+	0.0	13.2	51.2	35.6	10.2	68.2	21.4	0.1	0.291	0.147
<b>D10</b>	MET+	0.0	14.4	48.0	37.5	11.6	68.6	19.1	0.7	0.292	0.040
<b>G2</b>	MET+	0.0	20.8	67.0	12.1	6.6	60.5	32.9	0.0	0.293	0.077
<b>G6</b>	AWS	0.0	14.7	55.7	29.6	11.4	76.9	10.7	0.1	0.391	0.113
<b>I4</b>	MET+	0.0	21.0	72.6	6.5	8.6	60.6	29.4	1.5	0.230	0.072
<b>I8</b>	MET	0.0	6.2	45.6	48.2	10.8	79.7	9.3	0.2	N/A	N/A
<b>J11*</b>	MET+	0.0	3.6	32.0	64.4	9.3	74.1	15.7	0.1	0.108	0.166
<b>L5*</b>	AWS	0.0	4.9	20.9	74.2	9.4	63.4	27.2	0.0	0.006	0.168
<b>ALL</b>	$\varnothing$	0.0	12.8	48.0	39.1	10.1	67.8	21.7	0.4	0.175	0.096

of the 2011 campaign period, difficulties arise in establishing a relationship between  $u_*$  and the fluxes over a wider range of values. We therefore cannot rule out an unexpected increase in the emission flux which deviates from theoretical considerations. We have however high confidence in the identification of the emission signal resulting from specific wind events.

### 3 Box model development

This paper investigates a newly constructed set of box models which can either be run with synthetic data to test the range of potential changes in dust emission due to individual model parameters, or which can be driven with observational data. Input parameters are the shear velocity ( $u_*$ ), the surface roughness ( $z_0$ ), the soil moisture content ( $w$ ) and the mass size distribution of the soil ( $\Delta D_p$ ). Four parent particle size populations are considered for all simulations (diameter range in parenthesis): **clay** (0-2 $\mu m$ ), **silt** (2-50 $\mu m$ ), **fine/medium sand** (FMS; 50-500 $\mu m$ ), and **CS; coarse sand** (500-1000 $\mu m$ ). They cover the typical size range and chemical composition of dust particles in desert regions. In regional and global numerical dust models these four populations are converted into soil texture classes (Tegen et al., 2002) in order to match the information provided by the global soil data sets (e.g. FAO-UNESCO, 1974; Zobler, 1986, 1999).

#### 3.1 The Marticorena scheme

The MB95 emission scheme as implemented in the box model starts with the calculation of the semi-empirically derived threshold friction velocity over smooth surfaces ( $u_{*dry}$ ) (Iversen and White, 1982; Greeley and Iversen, 1985). Re-

quired input parameters are the air density ( $\rho_{air}$ ), the soil particle density ( $\rho_p=2.5g \cdot m^{-3}$  for clay;  $2.65g \cdot m^{-3}$  for the rest), and the median particle diameter ( $D_p$ ). The exact empirical formulation for  $u_{*dry}(D_p)$  is given in Box 1a in Fig. 1 in Darnenova et al. (2009).

The calculation of the threshold velocity  $u_{*thr}$  over a rough surface with potentially wet soil conditions requires the application of a moisture (Fécan et al., 1999) ( $H$ ) and a roughness correction (MacKinnon et al., 2004; Marticorena et al., 2006) ( $R$ ) for  $u_{*dry}$ :

$$u_{*thr}(D_p, z_0, w) = \frac{u_{*dry}(D_p)}{R(z_0)} \cdot H(w) \quad (1)$$

with:

$$R(z_0) = 1 - \frac{\ln\left(\frac{z_0}{z_{0s}}\right)}{\ln\left(0.7 \cdot \left(\frac{c_{MB95}/c_{McK04}}{z_{0s}}\right)^{0.8}\right)} \quad (2)$$

and:

$$H(w) = \begin{cases} (1 + 1.21 \cdot (w - w')^{0.68})^{0.5} & w > w' \\ 1 & w < w' \end{cases} \quad (3)$$

The roughness correction after MacKinnon et al. (2004) (McK04) has originally been developed for vegetated terrain, but has the advantage of spanning a wider range of roughness values which turns out to be important in our case as discussed in Sect. 4.2. The constant  $c_{McK04}$  is assumed to be 122.5m and the constant  $c_{MB95}$  is set to 0.1m (Marticorena et al., 2006). Either  $c_{MB95}$  or  $c_{McK04}$  can be used in Eq. 2 Both corrections follow the concept of a drag partition between mobile sand particles at the ground

(smooth roughness  $z_{0s}$ ) and larger non-erodible roughness elements (aeolian roughness  $z_0$ ). For a more detailed discussion on the concept of the characteristic roughness length scales we refer to Menut et al. (2013). We treat the local scale roughness (smooth roughness) as 1/30 of the median diameter  $D_p$  of the undisturbed coarse mode particles (Marticorena and Bergametti, 1995). The moisture correction applies in cases when the soil moisture  $w$  exceeds the threshold  $w' = 0.0014 \cdot (\%clay)^2 + 0.17 \cdot (\%clay)$ . The higher the clay content in the soil, the less likely dust production occurs under a given soil moisture content.

The sand transport model after White (1979) is used to obtain the streamwise horizontal saltation flux  $Q_{MB95}(D_p)$ .  $g$  is the gravitational constant and  $\rho_{air}$  the air density as before:

$$Q_{MB95}(D_p) = C_{MB95} \cdot \frac{\rho_{air}}{g} \cdot u_*^3 \cdot \left(1 + \frac{u_{*thr}(D_p)}{u_*}\right) \cdot \left(1 - \frac{u_{*thr}^2(D_p)}{u_*^2}\right) \quad (4)$$

The correction factor  $C_{MB95}$  (used to adjust the saltation flux according to experimental results) was originally set to 2.61 (Marticorena and Bergametti, 1995) but later revised to 1.0 (Marticorena et al., 1997) which is why we adopted  $C_{MB95} = 1.0$  in our box model setup.

Alternatively, the sand transport formulations after Owen (1964) (OW64) and Lettau and Lettau (1978) (LL78) are applied for sensitivity test purposes.

OW64 considers the concentration and vertical distribution of saltating grains in the saltation layer above the ground, making use of the grain size terminal velocity  $w_s$ .  $w_s$  is determined as a function of particle mass, diameter and the drag coefficient in consideration of different possible Reynolds regimes (Shao, 2008). The momentum flux is derived by relating upward and downward moving particles in the saltation layer.  $C_1$  and  $C_2$  (empirical constants to specify the ratio between  $w_s$  and  $u_*$ ) have values of 0.25 and 0.33, respectively (Sherman and Li, 2012):

$$Q_{OW64}(D_p) = \frac{\rho_{air}}{g} \cdot u_*^3 \cdot \left(1 - \frac{u_{*thr}(D_p)^2}{u_*^2}\right) \cdot \left(C_1 + C_2 \cdot \frac{w_s}{u_*}\right) \quad (5)$$

LL78 accounts for excess shear velocity relative to  $u_{*thr}$ . We use a factor of 6.7 for  $C_{LL78}$ , and  $D_{ref}$  is the reference grain size with a diameter of  $250\mu m$  as used in wind tunnel experiments (Bagnold, 1941).  $\rho_p$  is the soil particle density:

$$Q_{LL78}(D_p) = C_{LL78} \cdot \sqrt{\frac{D_p}{D_{ref}}} \cdot \frac{\rho_p}{g} \cdot (u_* - u_{*thr}(D_p)) \cdot u_*^2 \quad (6)$$

The integrated horizontal flux  $G$  relates  $Q_{MB95/OW64/LL78}$  with the relative surface area fraction  $S_{rel}$ , which is the percentage of soil grains with diameter  $D_p$  relative to the total surface covered by soil particles. The minimally disturbed field soil sample size distribution is used in our case.

The integrated vertical mass flux  $F_{MB95}(D_p)$  in the case of the MB95 scheme is obtained by means of an empirical approach which assumes a constant sandblasting (mass) efficiency  $\alpha$  for each size bin. We use values between  $1 \cdot 10^{-5}$  and  $1 \cdot 10^{-7} cm^{-1}$  for the four corresponding parent soil types as suggested by Tegen et al. (2002). While this approach reflects aggregate disintegration to some extent as the emitted particle size spectra shift towards smaller particles compared to the horizontal mass flux, only mobilized particles (expressed in terms of  $G$ ) will eventually be emitted. We try to minimize this problem by weighing each of the four bins according to its fraction in the fully disturbed field soil sample (see Table 1). The resulting sum of the four bins then determines the total  $\alpha$ .

### 3.2 The Shao scheme

The SH04 emission scheme is a more physical approach. Shao (2004) relate the binding energy of the dust particles to the threshold shear velocity. Over smooth surfaces, Shao and Lu (2000) derived  $u_{*dry}$  by adjusting the empirical expression of Greeley and Iversen (1985):

$$u_{*dry}(D_p) = \sqrt{A_N \cdot \frac{\rho_p \cdot g \cdot D_p}{\rho_{air}} + \frac{\Gamma}{\rho_{air} \cdot D_p}} \quad (7)$$

The interparticle cohesion force is considered as the combined effect of the van der Waals force and electrostatic force. It is assumed to be proportional to the soil particle size (Shao and Lu, 2000). The parameter  $\Gamma$  accounts for the magnitude of the cohesive force and has values between  $1.65 \cdot 10^4$  and  $5.0 \cdot 10^4 kg \cdot s^{-2}$ . We use the smallest value which seems to fit best for the applied particle size range (Zhao et al., 2006). The parameter  $A_N$  is a dimensionless threshold friction velocity which is expressed as a function of the particle Reynolds number  $Re_t$ . The weak dependence upon  $Re_t$  for dust particles led to a recommended factor of 0.0123 (Shao and Lu, 2000).

For  $R(z_0)$  in Eq. 1, a *double drag partition* scheme is proposed which treats bare and vegetated surfaces independently (Raupach, 1992; Raupach et al., 1993). In fact, it introduces a roughness density in terms of the frontal area covered by the non-erodible roughness elements present at the surface. As there is no vegetation present, we simplify the scheme such that it only depends on  $\beta$  (ratio of shear stress threshold of the bare erodible surface to the total shear stress threshold),  $\sigma$  (ratio of the basal to frontal area of the roughness elements),  $m$  (spatio-temporal variations of the underlying sur-

face stress), and  $\lambda(z_0)$  (roughness density of the non-erodible elements):

$$R(z_0) = \sqrt{\frac{1}{1 - m \cdot \sigma \cdot \lambda(z_0)}} \cdot \sqrt{\frac{1}{1 + m \cdot \beta \cdot \lambda(z_0)}} \quad (8)$$

405 Although a wide range of  $\beta$  values has been measured depending on surface type (King et al., 2005), we adopt values from Raupach et al. (1993) for  $\beta$  as well as  $\sigma$  and  $m$  ( $\beta = 90$ ;  $\sigma = 1$ ;  $m = 0.5$ ). For  $\lambda(z_0)$ , we take the values (based on field measurements (Marticorena et al., 2006)) given in Table 2 in Dardenova et al. (2009) according to our observed 410  $z_0$  values at each field site. For  $H(w)$ , a straight forward formulation based on wind tunnel experiments (Shao et al., 1996) as proposed by Zhao et al. (2006) is applied in the SH04 scheme as one choice:

$$H(w) = \begin{cases} e^{22.7 \cdot w} & w < 0.03 \\ e^{95.3 \cdot w - 2.03} & w > 0.03 \end{cases} \quad (9)$$

415 The sand transport formulation based on the OW64 model (Owen, 1964) is used in the SH04 horizontal flux parameterization. The dimensionless constant  $C_{SH04}$  can vary between 1.8–3.1 and is set to 2.45 in our experiments (Kawamura, 1964; Shao, 2008):

$$Q_{SH04}(D_p) = C_{SH04} \cdot \frac{\rho_{air} \cdot u_*^3}{g} \cdot \left(1 - \frac{u_{*thr}(D_p)}{u_*}\right) \quad (10)$$

420 The integrated horizontal flux  $G$  relates  $Q_{SH04}$  with the relative surface area fraction of each bin (denoted here as  $p_A(D_p)$  instead of  $S_{rel}$ ). As for MB95, we use the size distribution of the minimally disturbed soil sample.

For the integrated vertical mass flux, Shao (2001) proposed a scheme that accounts for saltation bombardment and aggregate disintegration. We use the simplified version introduced by Shao (2004). The size range of particles emitted by saltation bombardment differs from that of saltating particles (those in the horizontal saltation flux). While SH04 specifies a certain size range, we keep the original size range 430 of the four parent soil types for saltating as well as sandblasted particles. However, we account for the changing size range by applying the prescribed (i.e. observed) minimally ( $p_m(D_{pm})$ ) and fully disturbed ( $p_f(D_{pf})$ ) volume size distributions. It is assumed that the undisturbed soil sample represents the saltating particles while the fully disturbed soil sample represents the smaller particles which control the vertical emission dust mass flux (and hence account for aggregate disintegration). If strong erosion occurs, the scheme acts 435 to shift the soil particle size distribution towards the fully 480 disturbed sample. Furthermore, the ratio of auto-abrasion is parameterized by the free-dust-to-aggregated-dust-mass-ratio  $\sigma_p = p_m(D_{pm})/p_f(D_{pf})$ . The corresponding vertical flux formulation is the following:

$$F_{SH04}(D_{pm}, D_{pf}) = c_\gamma \cdot \eta_f(D_{pf}) \cdot ((1 - \gamma) + (\gamma \cdot \sigma_p)) \cdot (1 + \sigma_m) \cdot \frac{Q_{SH04}(D_{pm}) \cdot g}{u_*^2} \quad (11)$$

Here,  $\gamma$  is specified as  $\gamma = e^{-(u_* - u_{*thr})^3}$ , while  $\eta_f(D_{pf})$  refers to the mass fraction of the dust particles having diameters less than  $20 \mu m$ . We assume the mass fractions of the fully disturbed soil sample to be representative for that (it contains only clay and silt sized particles in most cases as shown in Table 1). The parameter  $\sigma_m$  depends on  $u_*$ , the plastic pressure  $p$  of the soil surface and the bulk soil density  $\rho_b$ . Together with  $c_\gamma$ , the latter two values are taken from Shao (2004) assuming sandy loamy soil conditions on average at the field site. The flux of the individual bins is finally integrated over the entire particle size range.

### 3.3 The Alfaro scheme

Similar to Shao (2004), Alfaro and Gomes (2001) offer a more sophisticated scheme for the conversion of the horizontal flux into the vertical mass flux compared to MB95. However, AG01 requires the calculation of the saltation mass flux as a prior condition. While AG01 has been combined with the MB95 horizontal flux scheme before (Menuet et al., 2005; Dardenova et al., 2009), in our experiments we use the SH04 horizontal flux as input parameter. It enables us to evaluate the performance of two complex vertical flux schemes which both attempt to describe the physical processes involved. Instead of four size bins, we use a discretized full-resolution soil size distribution in order to calculate the SH04 horizontal flux as it is required for the AG01 scheme. The size distribution is assumed to follow a multimodal lognormal shape with geometric mean diameters identical to the parent soil size bins (2, 15, 160, 710  $\mu m$ ) (Menuet et al., 2005). Accordingly, the relative surface area fraction  $S_{rel}$  is recalculated for the discretized particle size spectra, with  $D_{pk}$  referring to the diameter of the discretized full-resolution soil size distribution in the range of  $D_{pmin}$  and  $D_{pmax}$  with number  $N_{class}$ .

The AG01 scheme takes the individual kinetic energy  $E_{kin}$  of saltating soil grains required to entirely separate dust particles from each other by overcoming the interparticle cohesion forces into account. The dust emitted by sandblasting is characterized by three modes  $i$  which are considered to be independent of the soil grain type (Alfaro et al., 1998; Menuet et al., 2005). As soil aggregate size or model wind speed increases, first coarse mode particle with lowest cohesion energy  $e_i$  becomes released by  $E_{kin}$ , followed by intermediate and fine mode particles. The vertical dust flux in this case becomes:

$$F_{AG01}(D_{pi}, D_{mk}) = \sum_{k=1}^{N_{class}} \frac{\pi}{6} \cdot \rho \cdot \beta_{AG01} \cdot \frac{p_i(D_{pk}) \cdot D_{mi}^3}{e_i} dG(D_{pk}) \quad (12)$$

Here,  $D_{mi}$  is the mean mass diameter of the three soil grain modes (1.5, 6.7, 14.2  $\mu m$ ),  $\beta_{AG01}$  is an empirically derived parameter (163  $m/s^2$ ), and  $p_i(D_{pk})$  are the fractions of  $E_{kin}$  required for the release of the dust particles in the respective mode (Alfaro et al., 1997). Note that the AG01 scheme does not provide a size resolved dust emission flux as the discretized particle size spectrum in which the interparticle energy exchange forces act comprises a distinctively different size range than that of the emission flux. One could redistribute the accumulated dust over the four parent soil classes according to the observed disturbed size sample, but this would not be an actual prediction of this particular emission scheme. As noted by Darmenova et al. (2009), it is unlikely that interparticle cohesion can ever be predicted with the desired accuracy in order to resolve this problem in a satisfactory manner.

### 3.4 Box model experiments

To test the box model, we run the model with observational data as well as academic data (full range of possible shear velocities). This enables us to (1) estimate the sensitivity of the model to simulate dust emission, and (2) attribute the discrepancies to specific components of the emission schemes, or the choice of the emission scheme itself. We also test the critical parameter  $\alpha$  as a function of  $u_*$ . The set of experiments used in these exercises is schematically shown in Table 2. Each experiment uses a specific model setup based on the schemes introduced in Sect. 2: The sand transport model, the saltation flux and vertical dust flux scheme.

For the first runs, we only use experiments 1a, 4a and 5a, i.e. all correction schemes switched on, using the MB95, SH04 and AG01 scheme for the vertical emission flux. We focus on the most emissive period during the 2011 campaign, selecting a 30 day interval with three major dust events (17 Sep–17 Oct 2011). The field campaign begins with the end of the dry season in March/April. Conditions become increasingly dry with average daytime maximum temperatures typically reaching  $> 35^\circ C$ . Note that the rate of decrease in soil moisture varies between each individual field site and throughout time. Higher surface temperatures are accompanied by increasing boundary layer turbulence. Both, the increased availability of momentum and deflatable dust explain the more active *late* season during the first part of the **DO4Models** campaign. The dust emission season ended with the first rains in mid-October.

For the second and third set of model runs, the box model is configured to represent a single atmospheric model grid

**Table 2.** Individual model setups (1–5) and the conducted experiments (a–d). The sand transport models (STM) used for the two principal horizontal flux (HFlux) models (MB95, SH04) and the selected vertical flux (VFlux) schemes with the number of the corresponding setup are given. The lower case letters refer to the sensitivity experiments with the correction schemes. (\*) Experiments are carried out for each model setup (1–5).

Exp	HFlux	STM	VFlux	dragC	moistC
<b>1</b>	MB95	MB95	MB95		
<b>2</b>	MB95	OW64	MB95		
<b>3</b>	MB95	LL78	MB95		
<b>4</b>	SH04	SH04	SH04		
<b>5</b>	SH04	SH04	AG01		
<b>a</b>	*	*	*	ON	ON
<b>b</b>	*	*	*	ON	OFF
<b>c</b>	*	*	*	OFF	ON
<b>d</b>	*	*	*	OFF	OFF

cell. We use the temporally resolved average roughness, soil moisture, and particle size distribution to drive the model. For each experiment setup, the model is manipulated with (a) all corrections schemes switched on, (b) the soil moisture correction scheme (Eq. 2) switched off, (c) the drag partition correction scheme (Eq. 3) switched off, and (d) both correction schemes switched off.

Darmenova et al. (2009) pointed out that the soil moisture correction after Zhao et al. (2006) (see Eq. 9) might be excessively sensitive to changes in the soil moisture content. This will be tested using the MB95 formulation given in Eq. 3. The same will be done with Eq. 2 for roughness. In addition, the corresponding sensitivity of the simulated fluxes is discussed in the context of the observed fluxes.

## 4 Results and Discussion

We start with an overview of observed dust emissions from the field site and compare them with the box model results in Sect. 4.1. We then test the emission schemes over a range of shear velocities and quantify the differences with observations (Sect. 4.2). This is followed by an exploration of separate box model components (soil moisture and drag partition correction scheme; sand transport formulation) in an attempt to diagnose model-observed differences in emission (Sect. 4.3). The examination of the box model results is accompanied by a discussion of the errors and uncertainties involved. The applicability of the existing emission schemes is discussed on the basis of our model results and implications for regional and global dust modelling are highlighted in Sect. 4.4.

#### 4.1 Model performance during the field campaign

During our chosen period of highest emission activity, three major dust events were recorded: 25 Sep (DOY 268), 2 Oct (DOY 275), and 3 Oct (DOY 276) as evident in the observational data at two minute temporal resolution (Figs. 2–4). Peak wind speeds at 6m height reached up to  $18m \cdot s^{-1}$ . Corresponding maximum  $u_*$  values as high as  $0.9m \cdot s^{-1}$  were observed (with regard to  $\Delta t = 2min$ ). Two smaller events were recorded on 17 Sep (DOY 260) and on 6 Oct 2011 (DOY 279), though  $u_*$  did not reach a threshold of  $0.4m \cdot s^{-1}$  at all sites. Simultaneously during these wind events, decreasing Ångström exponents obtained from CIMEL data indicated dust loadings rather than biomass burning as the dominant aerosol type. The comparison between observed and simulated horizontal and vertical fluxes is shown in Figs. 2, 3, and 4, corresponding with the baseline Exps. 1a (MB95), 4a (SH04) and 5a (AG01), respectively. In order to provide a representative view of dust emissions, the most emissive site I4 (red border), the least emissive site L5 (blue border), and three average sites, B3, D10, and J11 were evaluated to provide perspectives on the role of surface type and emissivity.

Site I4 shows a pronounced flux signal during the three major dust events (Fig. 2c). Another small event was recorded on 6 Oct 2011 (DOY 279). The temporal agreement between the modelled fluxes and the observed peak shear velocities over the 17 Sep–17 Oct period (2min temporal resolution) is highest at site I4, particularly for MB95. However the modelled horizontal flux - associated with the saltation flux - overestimates the observed horizontal flux by 3 to 4 orders of magnitude. This discrepancy exists regardless of the strength of the dust event. The modelled vertical emission flux - associated with the sandblasting process - overestimates the observed vertical flux approximately by an order of magnitude. While the model performance is ultimately measured in terms of vertical emission flux (arguably with much a smaller model vs observation mismatch), the sandblasting efficiency  $\alpha$  differs by 2 to 3 orders of magnitude between model and observation (see Fig. 6 and discussion in section 4.3.1).

At sites B3 and D10 only one major saltation event was recorded (Fig. 2a, g). Likewise, vertical dust flux was calculated from concentration measurements for only one time interval at B3 (Fig. 2b). D10 did not emit at all, despite favourable observed soil moisture conditions (Fig. 2h). Due to the low soil moisture at both sites (considerable drop for B3 after DOY 270), the emission threshold in the MB95 model is frequently exceeded leading to substantially more frequent dust emissions. As at site I4, the modelled saltation flux during the event on 2 Oct (DOY 275) at sites B3 and D10 is strongly overestimated by up to 4 orders of magnitude. The vertical dust flux at B3 during the same event is overestimated by 1 to 2 orders of magnitude. A few Sensit hits were recorded (expressed in terms of  $Q_{OBS}$  in Fig. 2e)

at L5, associated with a rare number of events where vertical dust emission flux was measured (Fig. 2f). Both, observed fluxes and the low shear velocity at L5 are a result of very smooth surface conditions in combination with very wet sub-surface conditions. Equally wet soil conditions at J11 lead to the suppression of dust emissions in the model (Fig. 2i, j) altogether. As a consequence, the model does not simulate dust emission during the event on 25 Sept (DOY 268).

There are more frequent dust emissions with higher concentrations simulated with SH04 compared with MB95 (Fig. 3). The saltation flux is also strongly overestimated by approx. 4 orders of magnitude, whereas the vertical dust emission flux is overestimated by 1 to 2 orders of magnitude. Site B3 and D10 showcase the effect low soil moisture conditions will have upon the modelled emission fluxes (Fig. 3a, b, g, h). Unambiguously, the emission threshold is exceeded far more often in the model at sites I4 and D10 (Fig. 3c, d, g, h). Site D10 reveals a potential advantage of the more complex SH04 scheme: The modelled saltation flux does not necessarily result in an equally overestimated vertical dust mass flux due to the variable sandblasting efficiency. In contrast, the saltation flux is more strongly overestimated in SH04 compared to MB95. Fluxes with SH04 at site L5 are similar to fluxes simulated with MB95 (Fig. 3e, f). The temporal agreement between observed and modelled fluxes at site J11 is better with SH04 than with MB95 (Fig. 3i, j).

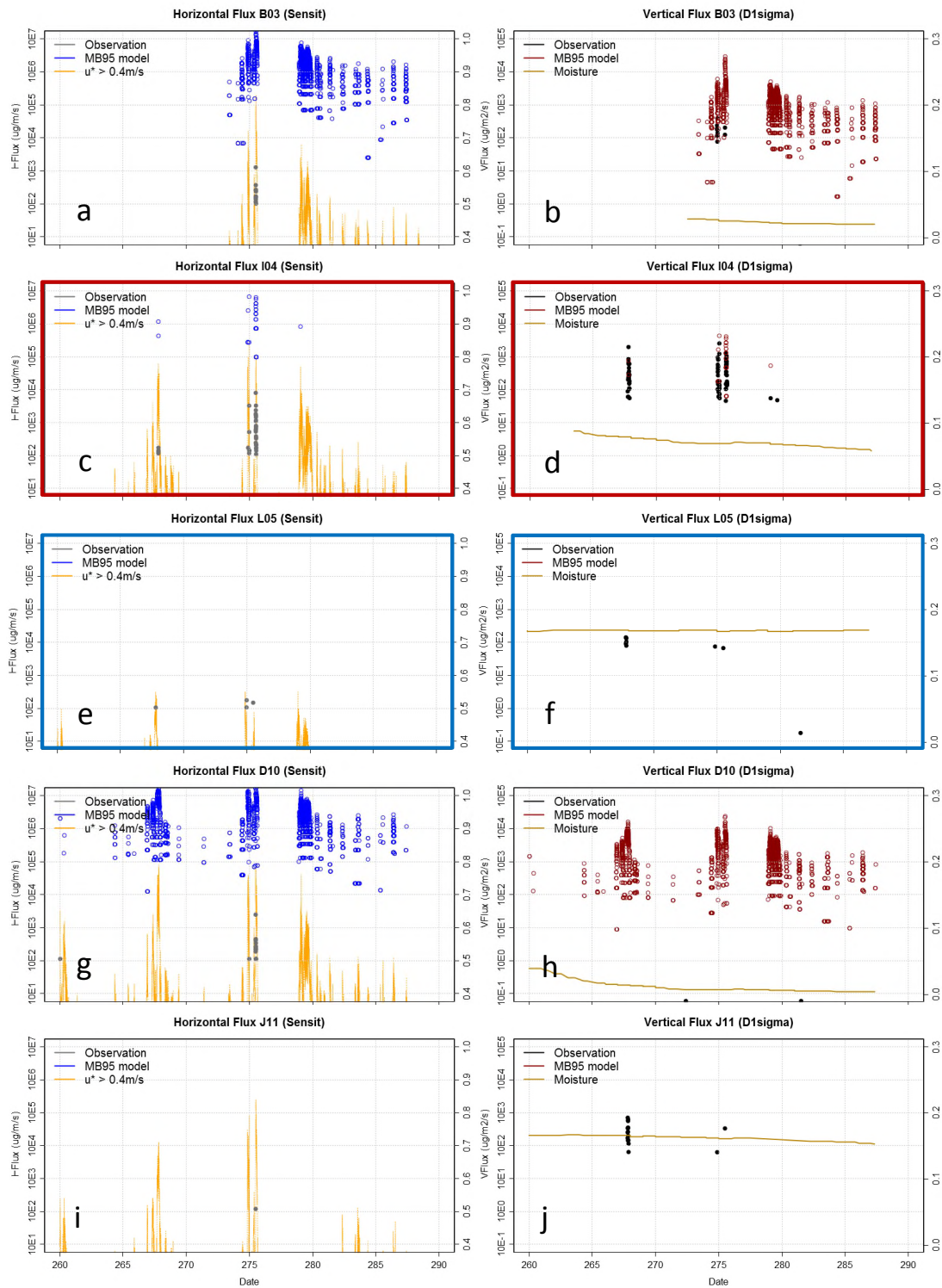
There is close agreement in the case of the saltation fluxes between AG01 and SH04. This is to be expected given that both experiments differ from one another only in the way the size bins are partitioned (see Sect. 3.3). At the same time, the good agreement between both saltation flux estimates is indicative of a limited impact of the size bin resolution on the resulting dust flux estimate. The modelled vertical fluxes in both schemes are different to those in MB95, LL78, and OW64 in two ways though: (1) vertical fluxes are more frequent due to substantially higher saltation fluxes in the first place, and (2) the magnitude of the vertical fluxes with AG01 is on average the lowest of all schemes used in our experiments. The observed dust emission flux is overestimated by less than an order of magnitude in the model with AG01. While modelled fluxes at B3, I4 and D10 occur much more frequent than observed fluxes (Fig. 4b, d, h), L5 and J11 (Fig. 4f, j) agree very well in that regard.

In essence, both frequency and strength of the dust emission flux is poorly reproduced in the three emission schemes. The emission threshold is least underestimated in MB95. The vertical emission flux is least overestimated in AG01.

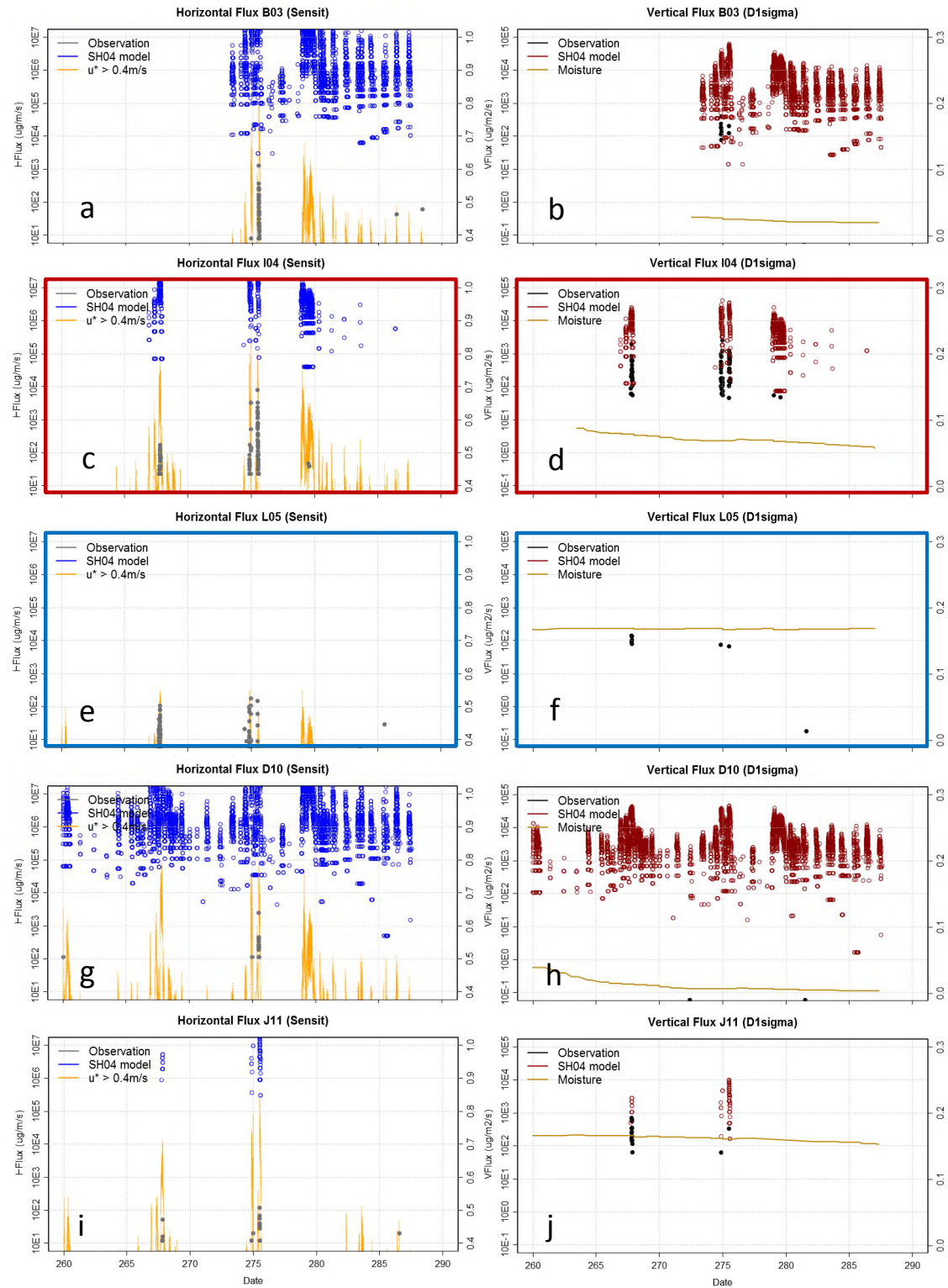
#### 4.2 Examination of dust transport/emission schemes

Before we elaborate on the potential causes for this mismatch between observed and modelled fluxes as well as for the substantial differences between the emission schemes, we explore the impact of the emission and sand transport schemes upon the simulated saltation and vertical flux in a wider con-





**Fig. 2.** Horizontal and vertical flux for Exp. 1a (MB95 scheme) at 5 field sites: B3 (a, b), I4 (c, d), L5 (e, f), D10 (g, h), J11 (i, j). The observed (modelled) saltation and vertical fluxes are shown in grey (blue) and black (dark red) dots. The period between DOY 260 (17 Sep) and DOY 290 (17 Oct 2011) is shown. The box model is driven with observed  $u_*$  values. On the left hand side, the shear velocity is shown (orange; values on the right ordinate). On the right hand side, the soil moisture content below  $0.3m^3 \cdot m^{-3}$  is shown (dark yellow; values on the right ordinate). Site I4 is referred to as *dusty* site (c, d). Site L5 emitted least throughout the 2011 campaign (e, f). I4 and L5 are marked with red and blue borders throughout the manuscript.



**Fig. 3.** Same as Fig. 2 but for Exp. 4a (SH04 scheme).

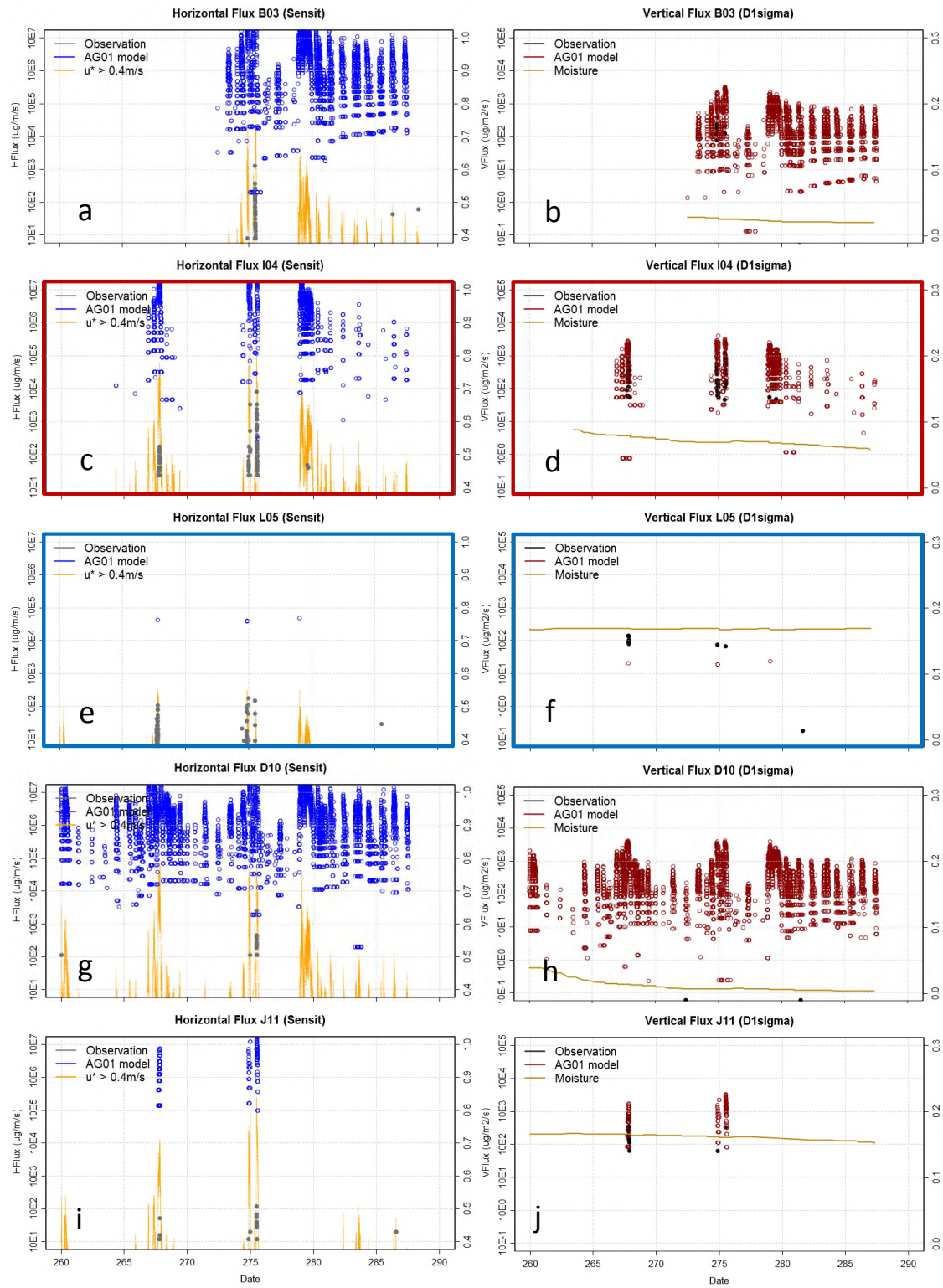
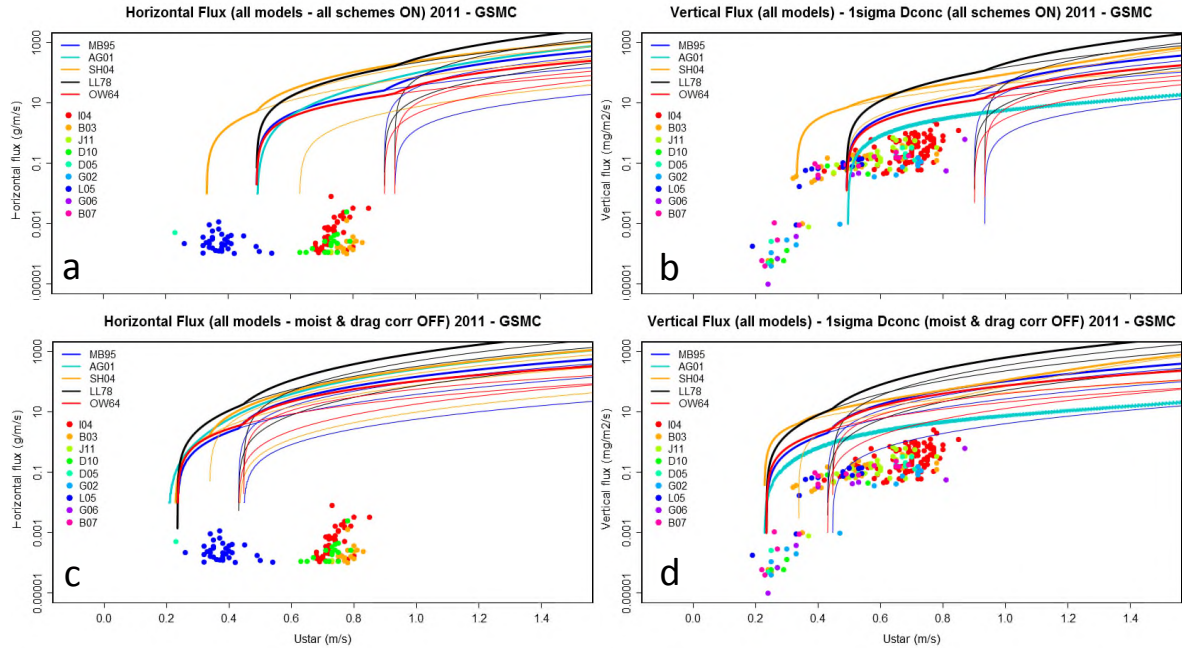


Fig. 4. Same as Fig. 2 but for Exp. 5a (AG01 scheme)





**Fig. 5.** Horizontal and vertical emission flux for Exps. 1a–5a (a,b) and Exps. 1d–5d (c,d). Bold lines are the sum of the flux over all 4 size bins. Thin lines are individual model particle size categories (fine/medium sand is emitted first). Coloured circles are the field observations.

text. We focus on Exps. 1a–5a and Exps. 1d–5d as shown in Figs. 5a, b and Figs. 5c, d, respectively. The simulated horizontal (Figs. 5a, c) and vertical fluxes (Figs. 5b, d) represent the sum of the individual fluxes for each parent soil type. Note that the AG01 scheme (Exp. 5a) uses a sub-bin size distribution of which only the total sum is shown, whereas the clay, silt, fine/medium and coarse sand fraction are shown individually (thin lines) in addition to the sum of all 4 bins (bold lines) for the MB95, LL78, OW64, and SH04 schemes (Exp. 1a–4a). Note also that the emission threshold is exceeded only for the silt, fine/medium and coarse sand fraction ( $u_{*thr}(clay) > 1.4 \text{ m} \cdot \text{s}^{-1}$ ). Box model fluxes are computed using observed data as before, averaged over the entire time period of the field campaign and all grid points (see Table 1).

Model expts. 1a–5a (Figs. 5a and 5b) reconfirm the results of the preceding section. The saltation flux in model schemes is overestimated by 3 to 4 orders of magnitude, whereas the simulated vertical flux is overestimated by 1 to 2 orders of magnitude in all schemes, with AG01 and OW64 showing the smallest mismatch regarding the vertical flux (cyan line in Fig. 5b). SH04 has a  $0.2 \text{ m} \cdot \text{s}^{-1}$  lower threshold velocity than AG01 and MB95. As our observed  $u_*$  never exceeds  $0.85 \text{ m} \cdot \text{s}^{-1}$ , we can only speculate whether we would have observed disproportionately increasing saltation flux rates with higher surface shear stress.

Model expts. 1d–5d (Figs. 5c and 5d) reveal a surprisingly close range of threshold shear values for all schemes. They start to emit at  $u_* \sim 0.2 \text{ m} \cdot \text{s}^{-1}$  with no exception. While the simulated emission fluxes are still too high, the under-

lying sand transport concept is robust in all schemes with respect to the emission threshold. Beyond the minimum erosion threshold, soil moisture content and surface roughness fundamentally control the frequency of occurrence of dust emissions.

Summarizing the key aspects of the two sections, we find that the model (1) strongly overestimates the saltation flux and moderately overestimates the vertical emission flux, and (2) tends to be very sensitive to changes in moisture and roughness leading to inconsistent or inaccurate emission thresholds for individual field sites. The general discrepancy between model results and observations indicates that the emission schemes have problems to represent key physical processes over crusted soil surfaces properly.

### 4.3 Potential reasons for the model discrepancies

In this section, we aim to understand the causes of the box model-observation discrepancies. Specifically, we aim to identify the parameters that contribute the largest to the model-observed differences. Considering the empirical basis of the emission schemes, it is worth noting that MB95 (mainly based on the formulation after Iversen and White (1982)) as well as SH04 (based on the formulation after Greeley and Iversen (1985)) rely on the theoretical concept of equilibrium between forces acting on a spherical loose particle at rest and under the influence of an air stream. As cautioned by Marticorena and Bergametti (1995), this theoretical assumption is bound to break down if loose particles are hid-

den under a resistant crust. The same is true for the concept of equilibrium between gravitational and interparticle cohesion forces which is the basis of SH04 as it was developed in Shao and Lu (2000). While SH04 allows adjustment to the magnitude of the cohesive force (parameter  $\Gamma$ ), MB95 is limited in this regard. Deficiencies arising from the MB95 saltation flux formulation are directly passed to the vertical flux estimate. In turn, the explicit formulation of  $\alpha$  in SH04 could potentially reduce intrinsic weaknesses of the saltation flux formulation.

#### 4.3.1 Problems in the simulated fluxes

Given that the model overestimates the saltation flux much more than the vertical flux - irrespective of the emission scheme - evaluation of the vertical-to-horizontal-flux-ratio  $\alpha$  is necessary. In Fig. 6, the discrepancy between the observed and modelled ratio is represented by the distance between the filled coloured dots ( $\alpha_{OBS}$ ) and the open coloured dots ( $\alpha_{MB95}$ ; Exp. 1a) or triangles ( $\alpha_{SH04}$ ; Exp. 4a), respectively. The temporal resolution between two flux measurements in our data is two minutes, which requires coincident observations of  $F_{OBS} > 0.0mg \cdot m^{-1} \cdot s^{-1}$  and  $Q_{OBS} > 0.0\mu g \cdot m^{-2} \cdot s^{-1}$  to determine  $\alpha_{OBS}$ . This condition is only met at site I4 for two dozens of 2min measurement intervals, mainly referring to DOY 275 (Fig. 6c). B3 provides sparse additional values (Fig. 6a). L5 (Fig. 6g) is discussed later in this section. The remaining sites are plotted in order to show the variability of the modelled  $\alpha_{(MB95/SH04)}$ .

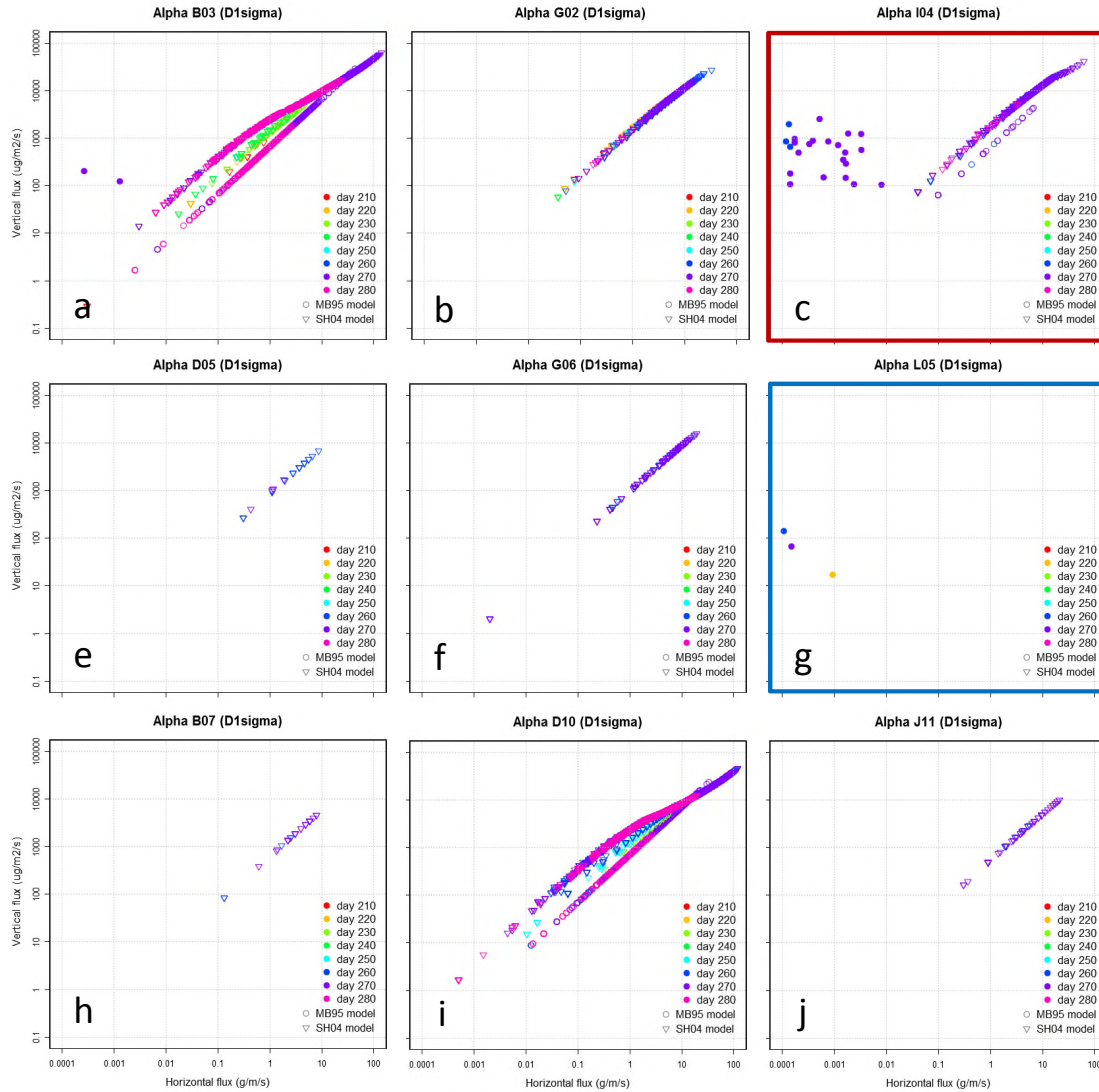
With the simple MB95 scheme in place,  $\alpha$  is strictly constant at each site. The more complex SH04 scheme allows for a varying  $\alpha$  in response to changes in soil composition, surface roughness and soil moisture content. The observed changes in  $z_0$  and  $w$  over the three months field interval have a profound impact on the modelled  $\alpha$  as can be seen in Fig. 6a (B3) and 6i (D10). The SH04 ratio varies by up to one order of magnitude (as a function of soil moisture which varies over time as reflected in the associated 10-day time interval) and can either be smaller or larger than the constant MB95 ratio. Despite the model variability, what is really striking is the mismatch of 2 to 4 orders of magnitude between observed and modelled  $\alpha$  at I4 (Fig. 6c) as initially outlined in Sect. 4.1. The weak observed saltation flux causes  $\alpha$  to be unprecedentedly high. The majority of the  $\alpha$  values lie between  $1 \cdot 10^{-1}$  and  $1 \cdot 10^{-3} cm^{-1}$ .

On the basis of the surface conditions at our most emissive site I4, which features a thin crust with open cells filled with very fine deflatable particles, we hypothesize that saltating particles are likely to be trapped by the salt containing fluff in these open cells which then absorbs the saltation momentum. Under the assumption that I4 is not a source for larger saltating particles itself, it represents a net sink for creeping and saltating particles, which leads to a cessation in the saltation flux. While the horizontal flux ceases, the comparably high shear stress maintains the vertical flux of smaller parti-

cles, though at a less efficient rate. Hence direct entrainment (production of vertical flux without saltating particles) has a larger share in the total emission flux. Whether the shape of the cells or the chemical properties of the fluff material are the major cause for I4 to be a saltation sink, remains to be explored. In contrast to I4, sustained particle motion (hitting the Sensit counter persistently) was observed at site L5 during the wind events, without ever recording actual vertical emission of finer particles. Wet sub-surface conditions led to the development of a fresh but very smooth and resistant crust at L5. Counter-intuitively, the smooth surface allowed coarser particles (advected from contiguous Pan surfaces with broken crust) to move easily. Presumably, the observed saltation flux at L5 is a result of the very exceptional surface conditions due to L5's situation on the grid.

Neither the shape of a partly crusted and rippled surface, nor the crust itself is represented in our schemes and this is likely the main cause of the large gap between observed and modelled fluxes. While the theoretical basis of the sand transport and dust emission schemes is well established and often successfully reproduced (e.g. Shao, 2001, 2008), the observed crust puts a considerable limit on their applicability in our case. One might argue that it is of lesser relevance to reproduce the saltation flux quantitatively correctly in the model as long as the vertical emission flux is correctly balanced, but this inevitably implies the acceptance of fundamental errors in the parameterization of the nature of the dust emission process. While the initial emission threshold is very sensitive to  $z_0$ ,  $w$ , and particle size, these factors become less important at higher wind speeds as the sand transport scheme controls the bulk of the vertical dust emission flux.

This study is not the first to report on diverging  $\alpha$  values. Based on measurements with a Sand Particle Counter (saltation flux) and an Optical Particle Counter, Shao et al. (2011a) obtained similar values to ours for  $\alpha$  over bare soil during the Japan Australia Dust Experiment (JADE) (Ishizuka et al., 2008, 2014). On the basis of their findings, they proposed that convective turbulent dust emission might play an important role. We concur with this proposition as we have indeed been observing frequent dust devils over the Pan, indicative of large eddies generated by localized momentum fluxes to the surface which intermittently receives a surge of strong shear stress leading to direct dust entrainment (Klose and Shao, 2013). Ishizuka et al. (2014) also highlight the size dependency of the emission flux as evident in their field data. Other studies matched empirical expectations quite well. For example, Gillette (1978) using test soils, Nickling and Gillies (1993) in Mali, Gillette et al. (1997) and Nickling et al. (2000) at Owens Lake, USA, Nickling et al. (1999) in Queensland, Australia, Rajot et al. (2003) in Niger, or Gomes et al. (2003) in Spain, they all found  $\alpha$  values in good agreement with theory. These studies have in common that wind tunnels were used to determine the fluxes experimentally, a fact that might well be key to understand the difference between their reported results and our field data.



**Fig. 6.** The temporal evolution of the simulated vertical-to-horizontal-flux-ratio  $\alpha$  for Exp. 1a (open circles) and 4a (open triangles) is shown in comparison to the observed values (closed circles). The colour refers to 10 day time intervals during the field season, with the start DOY given for each period. 9 out of 11 field sites are shown. In cases of  $F_{OBS}$  without simultaneous  $Q_{OBS}$ ,  $\alpha$  is zero. Note that there are situations in which vertical emission flux was measured without saltating particles.

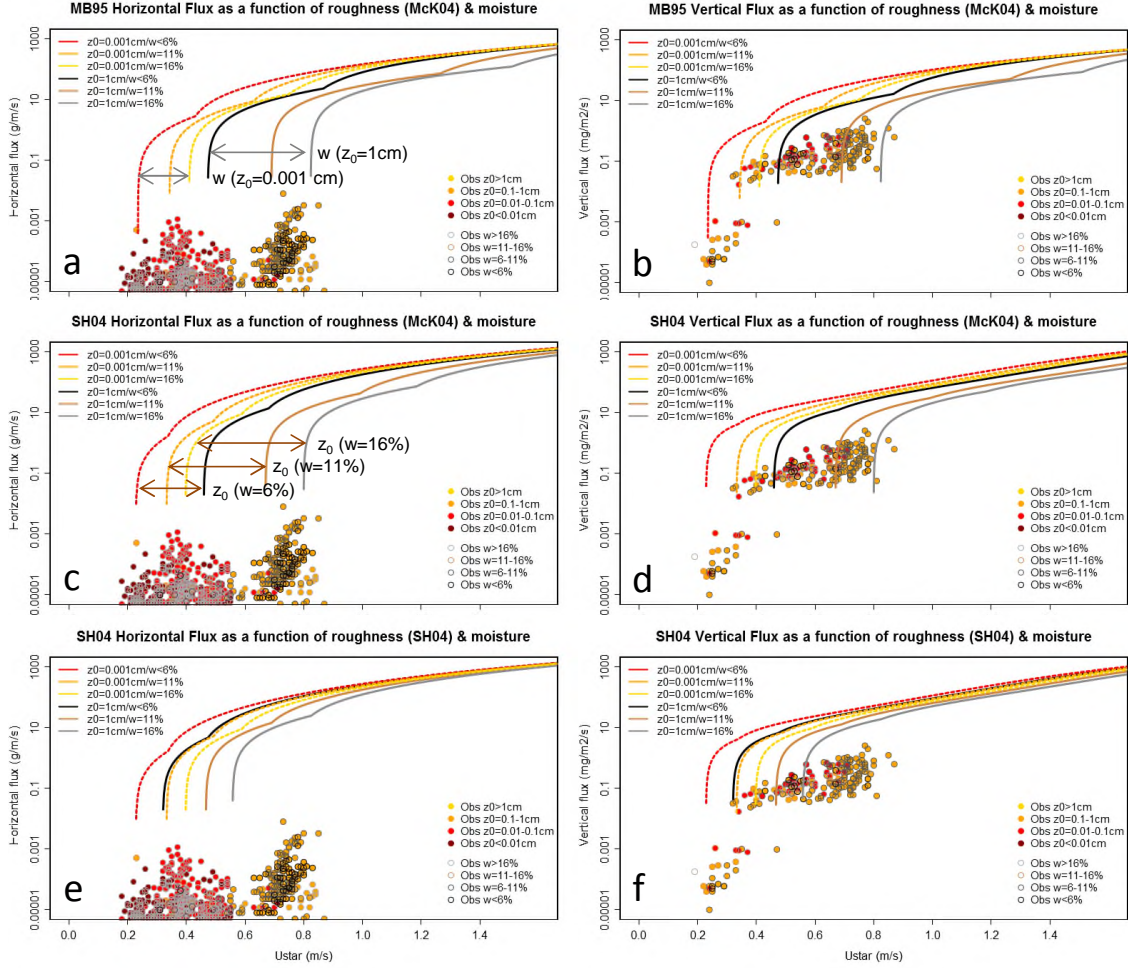
#### 4.3.2 Problems in the correction schemes

The remaining variability of the calculated dust fluxes is determined by the correction schemes for surface roughness and soil moisture content - both known to have a large impact on modelled mineral dust emission fluxes (Menut et al., 2013). The full range of sensitivities for the baseline experiments (1a, 4a) is shown in Fig. 7. For  $z_0$ , the observed range is:  $0.001\text{cm} < z_0 < 1.0\text{cm}$ . The minimum and maximum value for  $w$  has also been chosen according to the respective range of observed values:  $0.01 < w < 0.16\text{m}^3 \cdot \text{m}^{-3}$ . It is expressed in equivalent terms of percent water per soil volume. For Exp. 1a, the range of  $u_{*thr}$  varies between 0.25–

$0.8\text{m} \cdot \text{s}^{-1}$ . The threshold shear velocity is equally sensitive to both,  $z_0$  and  $w$ , yielding a corresponding inhibition of the simulated fluxes. The higher  $u_{*thr}$ , the lower the simulated fluxes once the threshold is exceeded. Exp. 4a is similarly sensitive to  $z_0$ . In turn, for increasing  $w$ , it tends to increase the emission threshold exponentially rather than linearly. As noted in Sect. 3.2, it is the scheme after Fécan et al. (1999) as used in MB95. The scheme proposed by Zhao et al. (2006) (Eq. 9) would span twice the range of potential  $u_{*thr}$  values which cannot be reconciled with the observed sensitivity (not shown).

In Fig. 7, the observed fluxes are divided into the same sub-categories. The results show that sites with the high-



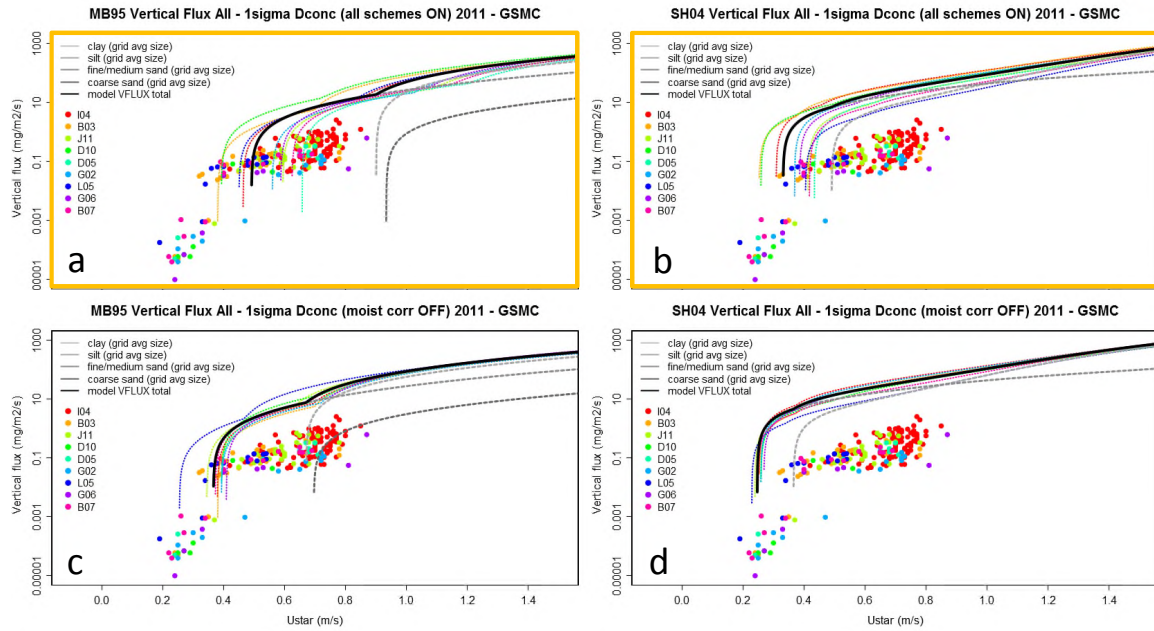


**Fig. 7.** Horizontal and vertical emission flux for the baseline Exp. 1a (a,b) and Exp. 4a (c,d,e,f). The entire range of observed surface roughness and soil moisture is plotted as a function of  $u_*$ . Likewise, the observational data are split into groups of different roughness and moisture. Lowest observed  $z_0$  are indicated by red and dark red dots, highest observed  $z_0$  by orange and yellow dots (see legend). Lowest observed  $w$  are indicated by black and dark grey open circles around the dots, higher observed  $w$  by brown and light grey open circles (see legend). Modelled  $z_0$  are set to two groups of  $0.001\text{ cm}$  and  $1\text{ cm}$ , whereas modelled  $w$  are set to three groups of 6, 11, and 16%, respectively.

est observed saltation fluxes have a very limited range of  $z_0$  ( $0.1\text{--}1\text{ cm}$ ). Likewise, the range of  $w$  is confined to  
 865 lower values ( $< 0.11\text{ m}^3 \cdot \text{m}^{-3}$ ) for those sites. The stronger fluxes at higher  $u_*$  are tied to lower  $w$  values. Lower  $z_0$  (smoother surface) corresponds well with emission at lower  $u_*$  values. Emission flux for  $u_* > 0.6$  is observed only for  $w < 0.06\text{ m}^3 \cdot \text{m}^{-3}$  (with very few exceptions). At the lower  
 870 end, medium roughness dominates. Occasionally, we measured vertical dust flux at sites with  $w > 0.06\text{ m}^3 \cdot \text{m}^{-3}$  despite  $u_* < 0.4\text{ m} \cdot \text{s}^{-1}$  (high saltation flux at L5 under these conditions, though). The fact that the sample size is small and the inherent measurement uncertainties are large (as dis-  
 875 cussed in Sect. 2) is suggestive of an artefactual behavior. However, observed local dust devils can pick up substantial amounts of dust which the dust traks at  $3\text{ m}$  height would easily record. The fraction of the emitted mass flux at low

$u_*$  with respect to the total mass flux might not be significant during dust events with a high saltation flux, but the omission of frequent low dust emission below the saltation threshold can lead to measurable systematic underestimation of the dust emission flux.

In Figs. 7e and 7f, the roughness scheme proposed by Raupach et al. (1993) (Eq. 8) is applied. Lesser sensitivity of  $u_{*thr}$  to changes in  $z_0$  is found with this scheme. Although it spans a range of  $u_{*thr}$  values which is in good agreement with the observations, it is rather insensitive to variations in aerodynamic surface roughnesses  $> 0.5\text{ cm}$ . Given that the majority of our observed  $z_0$  values is  $< 0.5\text{ cm}$ , the applicability of the SH04 roughness correction scheme seems questionable, despite having selected the remaining parameters such that they fit the category for bare surfaces with dense solid obstacles.



**Fig. 8.** Vertical emission flux for Exps. 1a, b (**a, c**), and 4a, b (**b, d**). Coloured circles are the observed fluxes. The simulated grid average flux is shown in black. The fluxes of the individual field sites are complementary given by the dotted coloured lines. The dashed grey lines refer to the model particle size categories as specified on the top left with fine/medium sand being emitted first (compare Fig. 5).

In Fig. 8b and Fig. 8d, Exps. 4a and 4b are compared with observations as a function of  $u_*$ . It can be seen that  $u_{*thr}$  of the vertical flux is basically insensitive to changes in roughness in case of SH04. Rather,  $u_{*thr}$  is controlled by the soil moisture alone. Replacing it with the McK04 drag partition scheme leads to more variability and eventually better agreement with observations (results not shown). In case of MB95,  $u_{*thr}$  is equally controlled by surface roughness (Fig. 8c) and soil moisture (not shown).

The MB95 drag partition scheme relates  $z_0$  with roughness densities of solid obstacles. A major limitation is its non-applicability for larger obstacles. At the Pan surface, large crustal plates got lifted by compressive stress due to drying of the crust material. These vertically displaced plates reached 10–20cm height, stretching over several 100m in a wavelike pattern with high lateral cover. High surface roughnesses were also reported by Greeley et al. (1997) from spaceborne observations in Death Valley, USA, or Marticorena et al. (2006) from ground-based observations in Tunisia. The ridge-induced change in roughness has been studied and shown to be important in reducing the saltation flux (Kardous et al., 2005). To account for higher roughnesses, MacKinnon et al. (2004) (McK04) corrected the MB95 scheme such that it is applicable for rougher surface conditions. In their case, the higher roughness is caused by vegetation (Central Mojave Desert, USA). Hence doubts remain as to whether the assumptions made are perfectly valid for our purposes, despite the fact the scheme performs better than the SH04.

With regard to the soil moisture correction, both, the parametrization developed by Fécan et al. (1999) (MB95) and by Shao et al. (1996) (SH04) require the exact knowledge of the moisture in the top 1–2cm soil layer. We consider our 0–3cm moisture measurement to be representative of this layer. The key aspects regarding the sensitivity of the threshold shear velocity outlined in Sect. 4.2 are reconfirmed in Figs. 8a, b. In Exps. 1c and 4c, the sole application of the soil moisture correction tends to improve agreement between simulated and observed  $u_{*thr}$  as well as the vertical emission flux (not shown). Note that both formulations (MB95 and SH04) are empirically derived and hence not universally applicable for all soil moisture conditions. As pointed out by Shao (2008), they fail to be reproducible in data sets other than those from which the formulation was initially derived.

The fact that none of the evaluated model correction schemes can be used without limitations as they struggle to reproduce the observed range of  $u_{*thr}$ , is attributable to two principal shortcomings: (1) The roughness correction does parametrize unevenness of the terrain, but is not designed to account for different shapes such as open cells. (2) The moisture correction does parametrize the wetness of the soil, but does not incorporate moisture-dependent chemical properties of the soil which may lead to crust formation.

#### 4.4 Implications for dust modelling

Sua Pan is observed to be a major southern hemisphere dust source. It is therefore crucial to ensure that we not only un-



950 understand the physics of the dust emission process better, but to  
 to be able to represent it in state-of-the-art model dust emis-  
 sion schemes. Our results suggest that there is a critical prob-  
 lem with the current generation of dust emission schemes as  
 they tend to vastly overestimate the observed fluxes. Reasons  
 955 are primarily related to the fact that existing schemes cannot  
 represent all the relevant physical processes. As stated in  
 section 4.3.1, observed small scale surface features such as  
 large ripples or small open cells within an otherwise crusted  
 surface are not described in the existing schemes. Failing to  
 960 include a crust leads to a higher availability of sediment in  
 the model as, in the field, deflatable fluff material is either  
 trapped in open cells of the crust (absorbing saltation mo-  
 mentum), or buried under a thick crust. Also the availability  
 of coarse material is limited due to the surface characteristics.  
 965 Our findings may imply that most of the modelled global dust  
 emissions are based on partly invalid assumptions.

Why - despite these limitations - are current emission  
 schemes able to reproduce the global dust cycle fairly well?  
 Apart from the potential counterbalancing effect of equally  
 970 erroneous dry and wet deposition assumptions, the fact that  
 global emissions are controlled by a few very productive  
 sources which are driven by frequent and excessive ex-  
 ceedance of the threshold wind speeds tends to eradicate  
 problems which occur at wind speeds just above  $u_{*thr}$ . For  
 975 example, neither the drag partition nor the soil moisture cor-  
 rection will have a seizable effect once  $u_{*thr}$  is exceeded.  
 Furthermore, the signal-to-noise-ratio increases with higher  
 wind speeds, acting to minimize biases introduced by inac-  
 curate representation of the surface conditions. Instead, in-  
 980 variable parameters such as the soil size distribution become  
 the dominant source of error.

Another - and perhaps the most important - reason for the  
 acceptably good reproduction of the global dust budget is the  
 fact that many models assume an empirical background size  
 985 distribution (Zender et al., 2003) rather than modelling it ex-  
 plicitly. Equally important, the concept of preferential dust  
 sources (Ginoux et al., 2001; Bullard et al., 2011), which acts  
 to nudge the models towards the observed dust emission pat-  
 terns by relaxing back the threshold emission and, in essence,  
 990 removing the crusting issue from the modelling process. The  
 fact that none of the current model emission schemes is able  
 to reproduce the spatial distribution of the major dust sources  
 correctly without applying either of these auxiliary steps re-  
 995 inforces our concerns regarding the validity of the emission  
 schemes.

Given the important role that surface crust seems to play,  
 we recommend that these features are represented in the  
 models. A *crustiness parameter* to correct  $u_{*thr}$  could be  
 defined as the aggregated state of the dry ground surface for  
 1000 resistant crusts as proposed by Ishizuka et al. (2008). Us-  
 ing available maps of aerodynamic surface roughness length  
 (Prigent et al., 2005; Laurent et al., 2008), an adjusted ver-  
 sion which takes crust cover into account may be possible. In  
 addition, the spatial-temporal considerations can help to find

an appropriate tuning constant to constrain the spatial hetero-  
 geneity. This is particularly true as only a small portion of the  
 grid (14 in our case) controls the bulk of the emissions. The  
 incorporation of sub-grid scale emission schemes in climate  
 or NWP models could be a worthwhile effort in that regard.  
 What remains elusive so far is whether the small range of  
 roughness and soil moisture values for which we measured  
 dust fluxes at the grid is indicative of a systematic relation  
 between  $z_0$ ,  $w$  and the properties of the crust.

The aspect of spatial heterogeneity is also related to model  
 resolution. A typical grid box in a regional climate or NWP  
 model corresponds with the size of our grid in the field (12  
 $km^2$ ). One such single grid box is treated as a homogeneous  
 surface, with soil moisture, soil size distribution and surface  
 roughness being equal everywhere. In an ideal modelling  
 world, not only have the grid box average values to provide  
 a balanced portrait of the emissive area fraction, but also do  
 they have to fit the observations of soil available for emis-  
 sion adequately. In the real world, most models make use  
 of the soil texture classes after Tegen et al. (2002). In our  
 box model experiments, the soil texture class which comes  
 closest to our grid average size distribution is the *loamy sand*  
 category. Comparing the emission flux obtained with the size  
 distribution given by this fixed category and the observed size  
 distribution, we find that the resulting model saltation flux is  
 significantly reduced in case of the fixed category. Recently  
 published new data set of soil mineralogy for dust productive  
 soils could alleviate the problem (Nickovic et al., 2012; Jour-  
 net et al., 2014). Ideally, a correction which aims at splitting  
 the dictated size distribution into a minimally and fully dis-  
 turbed subset of data could be introduced. As it is difficult  
 a goal to achieve, the SH04 scheme should preferentially be  
 used as it tries to account for the shift in the size distribution  
 at least to some extent.

In this context, it should be noted, though, that using the  
 fully disturbed rather than the minimally disturbed size dis-  
 tribution for the saltation flux calculation in our box model  
 experiments actually reduces the resulting vertical emission  
 flux by almost an order of magnitude, which in turn reduces  
 the gap between model and field results considerably. Un-  
 fortunately, it happens for the wrong reason as saltating par-  
 ticles do indeed consist of soil aggregates with larger par-  
 ticle diameter compared to what is used in NWP models.  
 This is in accordance with other studies that have shown  
 the size dependency of the emission flux to be important.  
 As a result, Ishizuka et al. (2014) proposed a size depen-  
 dent power law relation and Kok et al. (2014) developed an  
 emission parametrization based on the brittle fragmentation  
 theory (Kok, 2011). Both options offer another route for im-  
 provement with regard to current schemes.

Finally, our results indicate that direct entrainment of dust  
 particles plays a moderate role in the emission process. This  
 assumption is based on the low correlation between simu-  
 lated and observed fluxes with the tested emission schemes,  
 particularly for the saltation flux. Although the impact of this

emission mechanism is thought to be small as far as global climate simulations are concerned (since it is confined to low shear stress conditions), there is increasing evidence that sediment erosion and transport may respond effectively to wind turbulence (Weaver and Wiggs, 2011; Wiggs and Weaver, 2012). Indeed, Engelstaedter and Washington (2007) have noted that surface gustiness at dust hotspots exerts a much stronger temporal control on the timing of emissions than large-scale winds. If they are correct, direct entrainment during such gusts will very likely play a role with concomitant effects on the global scale. Undoubtedly, direct entrainment matters for regional short-term applications (e.g. local dust storm warnings). As current schemes do not capture these aspects well, those that take stochastic effects into account (Klose and Shao, 2012, 2013) could alleviate the problem to some extent.

## 5 Conclusions

The performance of current state-of-the-art dust emission schemes has been tested against observational data retrieved during the 2011 **DO4Models** field campaign in Botswana. The capabilities of these schemes to describe the physical processes which are thought to play a role in the dust emission process have been explored. We have found that all models fail to reproduce the observed dust fluxes in all experiments, regardless of their level of complexity. In particular, the horizontal saltation flux is overestimated by several orders of magnitude, causing the commonly used concept of an approximately constant sandblasting mass efficiency (vertical-to-horizontal-flux-ratio) to break down. The main reason is that the field site is characterized by a crust of varying thickness and extension.

The current results suggest that the observed saltation flux is several orders of magnitude lower than anticipated from theoretical considerations, even at our most emissive field site. Yet the measured vertical dust emission flux is closer to theoretical expectations. We therefore infer that saltation, sandblasting and aggregate disintegration are not the only emission processes at play. Rather, these results indicate that direct dust entrainment plays a vital role too. Since none of the tested schemes accounts for direct entrainment as explicitly mentioned in Shao (2004), the discrepancy in the sandblasting efficiency is explicable. Stochastic schemes such as the one recently proposed by Klose and Shao (2012) might help to overcome this problem. We believe that our results provide a fairly robust starting point to test these emerging new schemes.

Furthermore, we have found that the most sensitive parameter for the determination of the emission threshold in the model, the soil moisture, does not always relate to the potential emissivity of the site. Some sites with low enough soil moisture values to allow for dust emission did in fact not emit owing to a thick and continuous crust. As a result,

spatio-temporal variations of the emission flux are large, both in the observations and in the box model. The agreement for individual field sites is often poor, which is indeed indicative of a rather loose relationship between soil and surface properties and the resulting dust flux. The agreement between model and field data is, however, acceptable in the baseline experiments at the most emissive site. Encouragingly, the wettest site (with a smooth and thick crust) was essentially non-emissive during the 2011 field campaign.

The sensitivity experiment also taught us that even the least sensitive soil moisture correction for  $u_{*thr}$  (Fécan et al., 1999) still tends to be too sensitive. The drag partition correction for  $u_{*thr}$  is less sensitive, but only the scheme proposed by MacKinnon et al. (2004) is applicable over the entire range of observed aerodynamic surface roughnesses, despite the fact that it was originally proposed for vegetated desert surfaces. Using a minimally and a fully disturbed soil size distribution data set at each site for the model calculation of the horizontal and the vertical dust mass flux, respectively, the observed particle size range could be realistically represented by virtue of the availability of soil aggregate and soil individual particle size information.

Having systematically examined the impacts of the major emission model components, we highlight the following key findings and implications:

- **Strong overestimation** of saltation flux in all schemes
- **Moderate overestimation** of vertical flux in all schemes
- OW64 transport scheme reduces the quantitative bias
- Soil moisture sensitivity is too high in the Fecan scheme
- McK04 drag partition correction outperforms MB95
- SH04 scheme captures observed spatial variability better
- Vertical emission flux sensitive to soil size distribution
- Crust properties have large impact on emitted dust mass
- Spatio-temporal crust variability needs to be parameterized
- Stochastic approach for direct entrainment is desirable

In this context, we note that atmospheric model's meteorological fields are another key factor which may well outweigh the impact of spatio-temporal variability or measurement uncertainty (e.g. Darmenova et al., 2009; Knippertz and Todd, 2012). We address this aspect in an upcoming study using a state-of-the-art climate model.

We would like to emphasize that it is certainly necessary to include missing processes in dust emission schemes if one wants to move forward towards a more realistic description of the emission process. This is particularly true if one is aiming on providing regional or local dust emission forecasts, bearing also in mind that surface gustiness is a controlling factor for dust emission (Engelstaedter and Washington, 2007). A better constraint dust emission flux inherently helps to reduce uncertainties in other parts of the dust cycle, preferentially in the deposition flux. As many of the most emissive dust spots worldwide share common soil and surface properties, we argue that the incorporation of

parameterizations which reflect mechanisms that are characteristic for crusted soils can potentially improve the overall accuracy of the models, particularly over regions which feature frequent changes between dry and wet conditions as most monsoon regions do.

*Acknowledgements.* The authors thank J. Nield, A. Dansie, and K. Vickery for their assistance in the field work. We acknowledge the support of Botswana Ash (Pty) Ltd. for help with field access and the Botswana Ministry of Environment, Wildlife and Tourism for granting permission for our research (Permit No. EWT 8/36/4 XIV). We particularly thank A. Dansie for providing the soil size distribution data. We gratefully acknowledge the valuable contribution of two anonymous reviewers and, furthermore, we would like to thank H. Brindley, S. Woodward, and S. Engelstaedter for their constructive comments, all of which have helped to improve the paper a lot. The work was funded by the Natural Environment Research Council grant NE/H021841/1 (DO4Models).

The Fortran code (v1.0) used to carry out the model calculations is provided as supplementary material to the paper.

Edited by:

## References

- Alfaro, S. C. and Gomes, L.: Modeling mineral aerosol production by wind erosion: Emission intensities and aerosol size distribution in source areas., *Journal of Geophysical Research*, 106, 18 075–18 084, 2001.
- Alfaro, S. C., Gaudichet, A., Gomes, L., and Maillé, M.: Modeling the size distribution of a soil aerosol produced by sandblasting., *Journal of Geophysical Research*, 102, 11 239–11 249, 1997.
- Alfaro, S. C., Gaudichet, A., Gomes, L., and Maillé, M.: Mineral aerosol production by wind erosion: Aerosol particle sizes and binding energies., *Geophysical Research Letters*, 25, 991–994, 1998.
- Andreae, M. O.: Climatic effects of changing atmospheric aerosol levels., vol. 16, *World Survey of Climatology*, Elsevier, Amsterdam, 1996.
- Ashpole, I. and Washington, R.: An automated dust detection using SEVIRI: A multiyear climatology of summertime dustiness in the central and western Sahara., *Journal of Geophysical Research*, 117, D08202, 1–22, doi:10.1029/2011JD016845, 2012.
- Bagnold, R. A.: *The Physics of Blown Sand and Desert Dunes.*, Methuen, New York, 1941.
- Bangert, M., Nenes, A., Vogel, B., Vogel, H., Barahona, D., Karydis, V. A., Kumar, P., Kottmeier, C., and Blahak, U.: Saharan dust event impacts on cloud formation and radiation over Western Europe., *Atmospheric Chemistry and Physics*, 12, 4045–4063, doi:10.5194/acp-12-4045-2012, 2012.
- Boucher, O., Randall, D., Artaxo, P., Bretherton, C., Feingold, G., Forster, P., Kerminen, V.-M., Kondo, Y., Liao, H., Lohmann, U., Rasch, P., Satheesh, S. K., Sherwood, S., Stevens, B., and Zhang, X.-Y.: Chapter 7: Clouds and aerosols., *Tech. rep., Working Group I contribution to the IPCC 5th Assessment Report "Climate Change 2013: The Physical Science Basis"*, 2013.
- Brindley, H. E., Knippertz, P., Ryder, C., and Ashpole, P.: A critical evaluation of the ability of the Spinning Enhanced Visible and Infrared Imager (SEVIRI) thermal infrared red-green-blue rendering to identify dust events: Theoretical analysis., *Journal of Geophysical Research*, 117, D07201, doi:10.1029/2011JD017 326, 2012.
- Bryant, R. G., Bigg, G. R., Mahowald, N. M., Eckardt, F. D., and Ross, S. G.: Dust emission response to climate in southern Africa., *Journal of Geophysical Research*, 112, D09207, doi:10.1029/2005JD007025, 2007.
- Bullard, J. E., Harrison, S. P., Baddock, M. C., Drake, N., Gill, T. E., McTainsh, G., and Sun, Y.: Preferential dust sources: A geomorphological classification designed for use in global dust-cycle models., *Journal of Geophysical Research*, 116, F04034, 1–20, doi:10.1029/2011JF002061, 2011.
- Darmenova, K., Sokolik, I. N., Shao, Y., Marticorena, B., and Bergametti, G.: Development of a physically-based dust emission module within the Weather Research and Forecasting (WRF) model: Assessment of dust emission parameterizations and input parameters for source regions in Central and East Asia., *Journal of Geophysical Research*, 114, D14201, doi:10.1029/2008JD011 236, 2009.
- Eckardt, F. D., Bryant, R., McCulloch, G., Spiro, B., and Wood, W. W.: The hydrochemistry of a semi-arid pan basin case study: Sua Pan, Makgadikgadi, Botswana., *Applied Geochemistry*, 23, 1563–1580, doi:10.1016/j.apgeochem.2007.12.033, 2008.
- Engelstaedter, S. and Washington, R.: Temporal controls on global dust emissions: The role of surface gustiness., *Geophysical Research Letters*, 34, L15805, doi:10.1029/2007GL029 971, 2007.
- Evan, A. T., Dunion, J., Foley, J. A., Heidinger, A. K., and Velden, C. S.: New evidence for a relationship between Atlantic tropical cyclone activity and African dust outbreaks., *Geophysical Research Letters*, 33, L19813, doi:10.1029/2006GL026 408, 2006.
- FAO-UNESCO: *Soil Map of the world at 1: 5000000. Volume I.*, Tech. rep., UNESCO, Paris, France, 1974.
- Fécan, F., Marticorena, B., and Bergametti, G.: Parameterization of the increase of the aeolian erosion threshold wind friction velocity due to soil moisture for arid and semi-arid areas., *Annales Geophysicae*, 17, 149–157, 1999.
- Formenti, P., Schütz, L., Balkanski, Y., Desboeufs, K., Ebert, M., K., K., Petzold, A., Scheuven, D., Weinbruch, S., and Zhang, D.: Recent progress in understanding physical and chemical properties of African and Asian mineral dust., *Atmospheric Chemistry and Physics*, 11, 8231–8256, 2011.
- Forster, P., Ramaswamy, V., Artaxo, P., Berntsen, T., Betts, R., Fahey, D. W., Haywood, J., Lean, J., Lowe, D. C., Myhre, G., Nganga, J., Prinn, R., Raga, G., Schulz, M., and Van Dorland, R.: *Changes in Atmospheric Constituents and in Radiative Forcing.*, Cambridge University Press, Cambridge, UK and New York, USA, 2007.
- Fryrear, D. W.: A field dust sampler., *Journal of Soil and Water Conservation*, 41, 117–120, 1986.
- Gillette, D.: On the production of soil wind erosion aerosols having the potential for long range transport., *Journal de Recherches Atmospheriques*, pp. 735–744, 1974.
- Gillette, D.: A wind tunnel simulation of the erosion of soil: effect of soil texture, sandblasting, wind speed, and soil consolidation on dust production., *Atmospheric Environment*, 12, 1735–1743, 1978.

- Gillette, D. A., Fryear, D. W., Gill, T. E., Levy, T., Cahill, T. A.,<sup>1340</sup> and Gearhart, E. A.: Relation of vertical flux of particles smaller than 10m to total aeolian horizontal mass flux at Owens Lake., *Journal of Geophysical Research*, 102, 26 009–26 015, 1997.
- 1285 Ginoux, P., Chin, M., Tegen, I., Prospero, J. M., Holben, B., Dubovik, O., and Lin, S.-J.: Sources and distribution of dust<sup>1345</sup> aerosols simulated with the GOCART model., *Journal of Geophysical Research*, 106, D17, 20 255–20 273, 2001.
- 1290 Ginoux, P., Garbuzov, D., and Hsu, N. C.: Identification of anthropogenic and natural dust sources using Moderate Resolution Imaging Spectroradiometer (MODIS) Deep Blue level<sup>1350</sup> 2 data., *Journal of Geophysical Research*, 115, D05204, doi:10.1029/2009JD012 398, 2010.
- 1295 Ginoux, P., Prospero, J. M., Gill, T. E., Hsu, N. c., and Zhao, M.: Global-scale attribution of anthropogenic and natural dust sources and their emission rates based on MODIS Deep Blue<sup>1355</sup> aerosol products., *Reviews of Geophysics*, 50, RG3005, 1–36, doi:10.1029/2012RG000388, 2012.
- 1300 Gomes, L., Rajot, J. L., Alfaro, S. C., and Gaudichet, A.: Validation of a dust production model from measurements performed in semi-arid agricultural areas of Spain and Niger., *Catena*, 52,<sup>1360</sup> 257–271, 2003.
- 1305 Greeley, R. and Iversen, J. D.: *Wind as a Geological Process on Earth, Mars, Venus and Titan.*, Cambridge University Press, New York, 1985.
- Greeley, R., Blumberg, D. G., McHone, J. F., Dobrovolskis, A.,<sup>1365</sup> Iversen, J. D., Lancaster, N., Rasmussen, K. R., Wall, S. D., and White, B. R.: Applications of spaceborne radar laboratory data to the study of aeolian processes., *Journal of Geophysical Research*, 102, E5, 10 971–10 983, 1997.
- 1310 Haustein, K., Pérez, C., Baldasano, J. M., Jorba, O., Basart, S.,<sup>1370</sup> Miller, R. L., Janjic, Z., Black, T., Nickovic, S., Todd, M., Washington, R., Müller, D., Tesche, M., Weinzierl, B., Esselborn, M., and Schladitz, A.: Atmospheric dust modeling from meso to global scales with the online NMMB/BSC-Dust model - Part 2: Experimental campaigns in Northern Africa.<sup>1375</sup> *Atmospheric Chemistry Physics*, 12, 2933–2958, doi:10.5194/acp-12-2933-2012, 2012.
- 1320 Heinold, B., Tegen, I., Esselborn, M., Kandler, K., Knippertz, P., Müller, D., Schladitz, A., Tesche, M., Weinzierl, B., Ansmann, A., Althausen, D., Laurent, B., Petzold, A., and Schepanski,<sup>1380</sup> K.: Regional Saharan Dust Modelling during the SAMUM 2006 Campaign., *Tellus*, 61B, 307–324, 2009.
- 1325 Holben, B. N., Eck, T. F., Slutsker, I., Tanre, D., Buis, J. P., Setzer, A., Vermote, E., Reagan, J. A., Kaufman, Y. J., Nakajima, T., Lavenu, F., Jankowiak, I., and Smirnov, A.: AERONET - A<sup>1385</sup> federated instrument network and data archive for aerosol characterization - an overview., *Remote Sensing of Environment*, 66, 1–16, 1998.
- 1330 Huneeus, N., Schulz, M., Balkanski, Y., Griesfeller, J., Kinne, S., Prospero, J., Bauer, S., Boucher, O., Chin, M., Dentener, F.,<sup>1390</sup> Diehl, T., Easter, R., Fillmore, D., Ghan, S., Ginoux, P., Grini, A., Horowitz, L., Koch, D., Krol, M. C., Landing, W., Liu, X., Mahowald, N., Miller, R., Morcrette, J.-J., Myhre, G., Penner, J. E., Perlwitz, J., Stier, P., Takemura, T., and Zender, C.: Global dust model intercomparison in AeroCom phase I., *Atmospheric<sup>1395</sup> Chemistry and Physics*, 10, 23 781–23 864, 2011.
- Ishizuka, M., Mikami, M., Leys, J. F., Yamada, Y., Heidenreich, S., Shao, Y., and McTainsh, G. H.: Effects of soil moisture and dried raindroplet crust on saltation and dust emission., *Journal of Geophysical Research*, 113, D24212, 1–15, doi: 10.1029/2008JD009955, 2008.
- Ishizuka, M., Mikami, M., Leys, J. F., Shao, Y., Yamada, Y., and Heidenreich, S.: Power law relation between size-resolved vertical dust flux and friction velocity measured in a fallow wheat field., *Aeolian Research*, 12, 87–99, doi:10.1016/j.aeolia.2013.11.002, 2014.
- Iversen, J. D. and White, B. R.: Saltation threshold on Earth, Mars and Venus., *Sedimentology*, 29, 111–119, 1982.
- Journet, E., Balkanski, Y., and Harrison, S. P.: A new data set of soil mineralogy for dust-cycle modeling., *Atmospheric Chemistry and Physics*, 14, 3801–3816, doi:10.5194/acp-14-3801-2014, 2014.
- Kahn, R. A., Gaitley, B. J., Martonchik, J. V., Diner, D. J., and Crean, K. A.: Multiangle Imaging Spectroradiometer (MISR) global aerosol optical depth validation based on 2 years of coincident Aerosol Robotic Network (AERONET) observations., *Journal of Geophysical Research*, 110, D10S04, doi:10.1029/2004JD004 706, 2005.
- Kang, J.-Y., Yoon, S.-C., Shao, Y., and Kim, S.-W.: Comparison of vertical dust flux by implementing three dust emission schemes in WRF/Chem., *Journal of Geophysical Research*, 116, D09202, 1–18, doi:10.1029/2010JD014649, 2011.
- Kardous, M., Bergametti, G., and Marticorena, B.: Wind tunnel experiments on the effects of tillage ridge features on wind erosion horizontal fluxes., *Annales Geophysicae*, 23, 3195–3206, 2005.
- Kawamura, R.: *Study of sand movement by wind.*, Tech. rep., University of California, Berkeley, CA, 1964.
- King, J., Nickling, W. G., and Gillies, J. A.: Representation of vegetation and other nonerodible elements in aeolian shear stress partitioning models for predicting transport threshold., *Journal of Geophysical Research*, 110, F04015, 1–15, doi:10.1029/2004JF000281, 2005.
- King, J., Etyemezian, V., Sweeney, M., Buck, B. J., and Nikolich, G.: Dust emission variability at the Salton Sea, California, USA., *Aeolian Research*, 3, 67–79, doi:10.1016/j.aeolia.2011.03.005, 2011.
- Klose, M. and Shao, Y.: Stochastic parameterization of dust emission and application to convective atmospheric conditions., *Atmospheric Chemistry and Physics*, 12, 73097320, doi:10.5194/acp-12-7309-2012, 2012.
- Klose, M. and Shao, Y.: Large-eddy simulation of turbulent dust emission., *Aeolian Research*, 8, 49–58, doi:10.1016/j.aeolia.2012.10.010, 2013.
- Knippertz, P. and Todd, M. C.: Mineral dust aerosols over the Sahara: Meteorological controls on emission and transport and implications for modeling., *Reviews of Geophysics*, 50, RG1007, 1–28, doi:10.1029/2011RG000362, 2012.
- Kok, J. F.: Does the size distribution of mineral dust aerosols depend on the wind speed at emission?, *Atmospheric Chemistry and Physics*, 11, 10 149–10 156, 2011.
- Kok, J. F., Mahowald, N. M., Albani, S., Fratini, G., Gillies, J. A., Ishizuka, M., Leys, J. F., Mikami, M., Park, M.-S., Park, S.-U., Van Pelt, R. S., Ward, D. S., and Zobeck, T. M.: An improved dust emission model with insights into the global dust cycle's climate sensitivity., *Atmospheric Chemistry and Physics Discussions*, 14, 6361–6425, doi:doi:10.5194/acpd-14-6361-2014, 2014.
- Laurent, B., Marticorena, B., Bergametti, G., and Mei, F.: Model-

- ing mineral dust emissions from Chinese and Mongolian deserts., *Global and Planetary Change*, 52, 121–141, 2006.
- 1400 Laurent, B., Marticorena, B., Bergametti, G., Léon, J. F.,<sup>1460</sup>  
and Mahowald, N. M.: Modeling mineral dust emissions  
from the Sahara desert using new surface properties and soil  
database., *Journal of Geophysical Research*, 113, D14218,  
1405 doi:10.1029/2007JD009484, 2008.
- Lettau, K. and Lettau, H.: Exploring the World's Driest Climate.,<sup>1465</sup>  
chap. Experimental and micrometeorological field studies of  
dune migration., pp. 110–147, IES Report 101, Center for Cli-  
matic Research, University of Wisconsin-Madison, 1978.
- 1410 MacKinnon, D. J., Clow, G. D., Tigges, R. K., Reynolds, R. L., and  
Chavez Jr., P. S.: Comparison of aerodynamically and model-<sup>1470</sup>  
derived roughness lengths ( $z_0$ ) over diverse surfaces, central Mo-  
jave Desert, California, USA., *Geomorphology*, 63, 103–113,  
doi:10.1016/j.geomorph.2004.03.009, 2004.
- 1415 Marticorena, B. and Bergametti, G.: Modeling the atmospheric dust  
cycle: 1. Design of a soil-derived dust emission scheme., *Journal*<sup>1475</sup>  
*of Geophysical Research*, 100, D8, 16 415–16 430, 1995.
- Marticorena, B., Bergametti, G., Aumont, B., Callot, Y., N'Doumé,  
C., and Legrand, M.: Modeling the atmospheric dust cycle: 2.  
1420 Simulation of Saharan dust sources., *Journal of Geophysical Re-  
search*, 102, D4, 4387–4404, 1997.
- 1425 Marticorena, B., Kardous, M., Bergametti, G., Callot, Y., Chazette,  
P., Khatteli, H., Le Hégarat-Masclé, S., Maillé, M., Rajot, J.-  
L., Vidal-Madjar, D., and Zribi, M.: Surface and aerodynamic  
roughness in arid and semiarid areas and their relation to radar  
backscatter coefficient., *Journal of Geophysical Research*, 111,<sup>1485</sup>  
F03017, 1–23, doi:10.1029/2006JF000462, 2006.
- Menut, L., Schmechtig, C., and Marticorena, B.: Sensitivity of the  
Sandblasting Flux Calculations to the Soil Size Distribution Ac-  
1430 curacy., *Journal of Atmospheric and Oceanic Technology*, 22,  
1875–1884, 2005.
- Menut, L., Pérez, C., Haustein, K., Bessagnet, B., Prigent, C., and  
Alfaro, S.: Impact of surface roughness and soil texture on min-  
eral dust emission fluxes modeling., *Journal of Geophysical Re-  
1435 search*, 118, 1–16, doi:10.1002/jgrd.50313, 2013.
- Nickling, W., McTainsh, G. H., and Leys, J. F.: Dust emissions from<sup>1495</sup>  
the Channel Country of western Queensland, Australia., *Annals  
of Geomorphology*, 116, 1–17, 1999.
- 1440 Nickling, W., Luttmer, C., Crawley, D. M., Gillies, L. A., and Lan-  
caster, N.: Comparison of on- and off-lake PM10 dust emissions  
at Owens Lake, CA., Tech. rep., Wind Erosion Laboratory, De-<sup>1500</sup>  
partment of Geography, University of Guelph, Ontario, Canada,  
2000.
- Nickling, W. G. and Gillies, J. A.: Dust emission and transport in  
1445 Mali, West Africa., *Sedimentology*, 40, 859–868, 1993.
- Nickovic, S., Vukovic, A., Vujadinovic, M., Djurdjevic, V., and<sup>1505</sup>  
Pejanovic, G.: Technical Note: High-resolution mineralogical  
database of dust-productive soils for atmospheric dust modeling.,  
*Atmospheric Chemistry and Physics*, 12, 845–855, 2012.
- 1450 Nield, J. M., King, J., Wiggs, G. F. S., Leyland, J., Bryant, R. G.,  
Chiverrell, R. C., Darby, S. E., Eckardt, F. D., Thomas, D. S. G.,<sup>1510</sup>  
Virca, L. H., and Washington, R.: Estimating aerodynamic  
roughness over complex surface terrain., *Journal of Geophysical  
Research - Atmospheres*, 118, 12 948–12 961, 2013.
- 1455 Nield, J. M., Bryant, R. G., Wiggs, G. F. S., King, J., Thomas, D.  
S. G., Eckardt, F. D., and Washington, R.: The dynamism of salt<sup>1515</sup>  
crust patterns on playas., *Geology*, 43, doi:10.1130/G36175.1,  
2015.
- Owen, P. R.: Saltation of uniform grains in air., *Journal of Fluid  
Mechanics*, 20, 225–242, 1964.
- Pérez, C., Nickovic, S., Pejanovic, G., Baldasano, J. M., and  
Özsoy, E.: Interactive dust-radiation modeling: A step to im-  
prove weather forecasts., *Journal of Geophysical Research*, 111,  
D16206, doi:10.1029/2005JD006717, 2006.
- Pérez, C., Haustein, K., Janjic, Z., Jorba, O., Huneeus, N., Bal-  
dasano, J. M., Black, T., Basart, S., Nickovic, S., Miller,  
R. L., Perlwitz, J. P., Schulz, M., and Thomson, M.: Atmo-  
spheric dust modeling from meso to global scales with the online  
NMMB/BSC-Dust model: 1. Model description, annual simula-  
tions and evaluation., *Atmospheric Chemistry and Physics*, 11,  
13 001–13 027, 2011.
- Prigent, C., Tegen, I., Aires, F., Marticorena, B., and Zribi,  
M.: Estimation of the aerodynamic roughness length in arid  
and semi-arid regions over the globe with the ERS scat-  
terometer., *Journal of Geophysical Research*, 110, D09205,  
doi:10.1029/2004JD005370, 2005.
- Rajot, J. L., Alfaro, S. C., Gomes, L., and Gaudichet, A.: Soil crust-  
ing on sandy soils and its influence on wind erosion., *Catena*, 53,  
1–16, 2003.
- Raupach, M. R.: Drag and drag partition on rough surfaces.,  
*Boundary-Layer Meteorology*, 60, 375–395, 1992.
- Raupach, M. R., Gillette, D. A., and Leys, J. F.: The Effect of  
Roughness Elements on Wind Erosion Threshold., *Journal of  
1425 Geophysical Research*, 98, D2, 3023–3029, 1993.
- Redmond, H. E., Dial, K. D., and Thompson, J. E.: Light scattering  
and absorption by wind blown dust: Theory, measurement, and  
recent data., *Aeolian Research*, 2, 5–26, 2010.
- Remer, L. A., Tanré, D., Kaufman, Y. J., Ichoku, C., Mattoo, S.,  
Levy, R., Chu, D. A., Holben, B. N., Dubovik, O., Smirnov,  
A., Martins, J. V., Li, R.-R., and Ahmad, Z.: Validation of  
MODIS aerosol retrieval over ocean., *Geophysical Research Let-  
1430 ters*, 29(12), doi:10.1029/2001GL013204., 2002.
- Rice, M. A., Willetts, B. B., and McEwan, I. K.: Wind erosion  
of crust ed soil sediments., *Earth Surface Processes and Land-  
forms*, 21, 279–293, doi:doi:10.1002/(sici)1096-9837(199703)  
22:3, 1996.
- Shao, Y.: A model for mineral dust emission., *Journal of Geophys-  
ical Research*, 106, 20 239–20 254, 2001.
- Shao, Y.: Simplification of a dust emission scheme and compari-  
son with data., *Journal of Geophysical Research*, 109, D10202,  
doi:10.1029/2003JD004372, 2004.
- Shao, Y.: *Physics and Modelling of Wind Erosion.*, Springer Sci-  
ence and Business Media B. V., 2008.
- Shao, Y. and Lu, H.: A simple expression for wind erosion threshold  
friction velocity., *Journal of Geophysical Research*, 105, 22 437–  
22 444, 2000.
- Shao, Y., Raupach, M. R., and Leys, J. F.: A model for predicting  
Aeolian sand drift and dust entrainment on scales from paddock  
to region., *Australian Journal of Soil Research*, 34, 309–342, doi:  
10.1071/SR9960309, 1996.
- Shao, Y., Ishizuka, M., Mikami, M., and Leys, J. F.: Parameter-  
ization of size-resolved dust emission and validation with mea-  
surements., *Journal of Geophysical Research*, 116, D08203, 1–19,  
doi:10.1029/2010JD014527, 2011a.
- Shao, Y., Wyrwoll, K.-H., Chappell, A., Huang, J., Lin, Z., Mc-  
Tainsh, G. H., Mikami, M., Tanaka, T. Y., Wang, X., and Yoon,

- S.: Dust cycle: An emerging core theme in Earth system science., *Aeolian Research*, 2, 181–204, 2011b.
- Sherman, D. J. and Li, B.: Predicting aeolian sand transport rates: A reevaluation of models., *Aeolian Research*, 3, 371–378, 2012.
- 1520 Tegen, I., Harrison, S. P., Kohfeld, K., Prentice, I. C., Coe, M., and Heimann, M.: Impact of vegetation and preferential source areas on global dust aerosol: Results from a model study., *Journal of Geophysical Research*, 107, D21, doi:10.1029/2001JD000963, 2002.
- 1525 Textor, C., Schulz, M., Guibert, S., Kinne, S., Balkanski, Y., Bauer, S., Bernsten, T., Berglen, T., Boucher, O., Chin, M., Dentener, F., Diehl, T., Easter, R., Feichter, H., Fillmore, D., Ghan, S., Ginoux, P., Gong, S., Grini, A., Hendricks, J., Horowitz, L., Huang, P., Isaksen, I., Iversen, T., Kloster, S., Koch, D., Kirkevåg, A., Kristjansson, J. E., Krol, M., Lauer, A., Lamarque, J. F., Liu, X., Montanaro, V., Myhre, G., Penner, J., Pitari, G., Reddy, S., Seland, O., Stier, P., Takemura, T., and Tie, X.: Analysis and quantification of the diversities of aerosol life cycles within AeroCom., *Atmospheric Chemistry and Physics*, 6, 1777–1813, 2006.
- 1535 Wang, X., Chancellor, G., Evenstad, J., Farnsworth, J. E., Hase, A., Olson, G. M., Sreenath, A., and Agarwal, J. K.: A novel optical instrument for estimating size segregated aerosol mass concentration in real time., *Aerosol Science and Technology*, 43, 939–950, 2009.
- 1540 Washington, R., Bouet, B., Cautenet, G., Mackenzie, E., Ashpole, I., Engelstaedter, S., Lizcano, G., Henderson, G. M., Schepanski, K., and Tegen, I.: Dust as a tipping element: The Bodélé Depression, Chad., *Proceedings of the National Academy of Sciences*, 106, No.49, 20564–20571, 2009.
- 1545 Watson, J. G., Chow, J. C., Chen, L., Wang, X., Merrifield, T. M., Fine, P. M., and Barker, K.: Measurement system evaluation for upwind/downwind sampling of fugitive dust emissions., *Aerosol and Air Quality Research*, 11, 331–350, 2011.
- 1550 Weaver, C. M. and Wiggs, G. F. S.: Field measurements of mean and turbulent airflow over a barchan sand dune., *Geomorphology*, 128, 32–41, 2011.
- 1555 White, B. R.: Soil transport by winds on Mars., *Journal of Geophysical Research*, 84, B9, 4643–4651, 1979.
- Wiggs, G. F. S. and Weaver, C. M.: Turbulent flow structures and aeolian sediment transport over a barchan dune., *Geophysical Research Letters*, 39, L05404, 2012.
- 1560 Zender, C. S., Bian, H., and Newman, D.: Mineral Dust Entrainment and Deposition (DEAD) model: Description and 1990s dust climatology., *Journal of Geophysical Research*, 108, D14, 4416, doi:10.1029/2002JD002775, 2003.
- 1565 Zhao, T. L., Gong, S. L., Zhang, X. Y., Abdel-Mawgoud, A., and Shao, Y. P.: An assessment of dust emission schemes in modeling east Asian dust storms., *Journal of Geophysical Research*, 111, D05S90, 1–11, doi:10.1029/2004JD005746, 2006.
- Zobler, L.: A world soil file for global climate modeling., Tech. rep., NASA TM-87802, 1986.
- 1570 Zobler, L.: Global Soil Types, 1-Degree Grid (Zobler) data set., Tech. rep., Oak Ridge National Laboratory Distributed Active Archive Center, Oak Ridge, Tennessee, U.S.A., 1999.