

A new Geoengineering Model Intercomparison Project (GeoMIP) experiment designed for climate and chemistry models

S. Tilmes¹, M. J. Mills¹, U. Niemeier², H. Schmidt², A. Robock³, B. Kravitz⁴, J.-F. Lamarque¹, G. Pitari⁵, and J. M. English⁶

¹National Center for Atmospheric Research, Boulder, Colorado, USA

²Max Planck Institute for Meteorology, Hamburg, Germany

³Department of Environmental Sciences, Rutgers University, New Brunswick, NJ, USA

⁴Pacific Northwest National Laboratory, Richland, WA, USA

⁵Department of Physical and Chemical Sciences, Università L'Aquila, 67010 Coppito, LAquila, Italy

⁶University of Colorado at Boulder, Boulder, CO, USA

Correspondence to: Simone Tilmes, National Center for Atmospheric Research, Boulder, Colorado, USA (tilmes@ucar.edu)

Abstract. A new Geoengineering Model Intercomparison Project (GeoMIP) experiment “G4 specified stratospheric aerosols” (short name: G4SSA) is proposed to investigate the impact of stratospheric aerosol geoengineering on atmosphere, chemistry, dynamics, climate, and the environment. In contrast to the earlier G4 GeoMIP experiment, which requires an emission of sulphur dioxide (SO₂) into the model, a prescribed aerosol forcing file is provided to the community, to be consistently applied to future model experiments between 2020 and 2100. This stratospheric aerosol distribution, with a total burden of about 2 Tg S has been derived using the ECHAM5-HAM microphysical model, based on a continuous annual tropical emission of 8 Tg SO₂/yr. A ramp-up of geoengineering in 2020 and a ramp-down in 2070 over a period of two years are included in the distribution, while a background aerosol burden should be used for the last 3 decades of the experiment. The performance of this experiment using climate and chemistry models in a multi-model comparison framework will allow us to better understand the impact of geoengineering and its abrupt termination after 50 years in a changing environment. The zonal and monthly mean stratospheric aerosol input dataset is available at <https://www2.acd.ucar.edu/gcm/geomip-g4-specified-stratospheric-aerosol-data-set>.

15 1 Introduction

The Geoengineering Model Intercomparison Project (GeoMIP) has been successful in investigating the impact of large scale geoengineering on various climate parameters, including global and regional temperature and precipitation, the energy budget, sea-ice, climate extremes, and crop produc-

tion (e.g., Kravitz et al., 2013a,b; Special Section on GeoMIP, 2014). GeoMIP includes four model
20 experiments designed to calculate the response of the climate system to large-scale solar radiation
management (SRM) techniques, while offsetting anthropogenic greenhouse warming (Kravitz et al.,
2011). The G1 experiment involves reduction of incoming solar radiation to counteract a radiative
forcing of four times the amount of carbon dioxide (CO₂) relative to pre-industrial control condi-
25 tions. The G2 experiment involves the same solar dimming technique to offset a gradual increase
in CO₂ from pre-industrial levels. Calculations indicate that relative to pre-industrial conditions,
solar dimming of this scale would result in a slow-down of the hydrological cycle (Tilmes et al.,
2013), a reduced, but continued warming of the high latitudes (Schmidt et al., 2012; Kravitz et al.,
2013a), a reduction in sea-ice (Moore et al., 2014), and a reduction of agricultural production (Xia
et al., 2014). Further, SRM reduces extreme temperature and precipitation changes in comparison to
30 a non-geoengineering scenario with four times CO₂ (Curry et al., 2014).

The other two GeoMIP experiments, G3 and G4, require the enhancement of stratospheric sul-
phate aerosols due to the continuous emission of sulphur dioxide (SO₂) into the tropical lower strato-
sphere for the period 2020 and 2070, using the Representation Concentration Pathway 4.5 (RCP4.5)
Coupled Model Intercomparison Project Phase 5 (CMIP5) future projection (Taylor et al., 2012). G4
35 requires the emission of 5 Tg of SO₂ each year on the Equator, while G3 requires counteracting the
anthropogenic radiative forcing of the RCP4.5 future projection between 2020 and 2070 by increas-
ing the emission rate of SO₂ accordingly (Kravitz et al., 2011). The impact of sulphate aerosols
could be different from solar dimming experiments. Both would decrease the shortwave incoming
radiation. However, stratospheric aerosols heat the stratosphere, which changes the dynamics of the
40 atmosphere and the radiative response. In particular, a stronger slow-down of the hydrological cycle
was found for the aerosol-based methods as compared to the solar constant reduction (Ferraro et al.,
2014; Niemeier et al., 2013). A recent study by Aquila et al. (2014) identifies significant changes in
the Quasi-Biennial Oscillation (QBO), with a prolongation of the QBO westerly phase at 50 hPa, if
geoengineering with stratospheric aerosols were to be applied. Further, enhanced aerosols change
45 stratospheric chemistry and therefore ozone (e.g., Tilmes et al., 2009).

So far, only a limited number of models have performed the G3 and G4 GeoMIP experiments.
The G3 experiment has turned out to be especially difficult to perform, since it is not straightforward
to determine the changing rate of SO₂ emissions required to counteract the anthropogenic radiative
forcing in the future scenario. Furthermore, not many models have the ability to perform prognostic
50 aerosol experiments including detailed aerosol microphysics. As shown by Heckendorn et al. (2009),
Niemeier et al. (2011), and English et al. (2012), aerosol mass and properties significantly change
with increasing emission rates, which has to be taken into account. Since GeoMIP was designed to
build on CMIP5, most of the models did not include interactive chemistry and hence some potentially
important coupling effects are missing. The models that performed G3 and G4 experiments derived
55 very different stratospheric aerosol distributions, due to different assumptions of aerosol properties

and differences in stratospheric transport and heating rates of the models (Berdahl et al., 2014; Pitari et al., 2014). Some models maintain a large burden of mass in the tropics while others produce a maximum in higher latitudes. Those differences result in very different lifetimes of stratospheric aerosols and therefore differences in the required emission rate for the different models. The change in net tropopause radiative forcing of available experiments ranges between -0.74 and -1.54 W/m^2 (Pitari et al., 2014), which limits the identification of robust climate impacts of geoengineering. Furthermore, the lack of comprehensive tropospheric and stratospheric chemistry in most models neglects the chemistry radiation coupling (mostly via ozone), which can be important to climate impacts.

Investigating differences in aerosol distribution due to sulphur injection as simulated by different models may be important for studies examining the rate and spatial pattern of emissions, and subsequent distribution by interaction with model dynamics. We propose a new GeoMIP experiment that uses a uniformly prescribed stratospheric aerosol distribution to address the dependence of the different parameterizations in fully-coupled chemistry and climate models and the impact of future climate change. By constraining the prescribed stratospheric aerosol distribution, we reduce the degrees of freedom from earlier model comparisons of G4, which will reduce the spread of the responses and help identifying key sources of uncertainties in the chemical, dynamical, and radiative response to geoengineering with stratospheric sulphate aerosols. Other applications of the stratospheric aerosol distribution may include comparisons to distributions of interactive microphysical models, which include different feedbacks.

2 Experimental design

The design of the new GeoMIP experiment G4SSA (specified stratospheric aerosols) is similar to the GeoMIP G4 experiment (Kravitz et al., 2011), but defines a fixed prescribed stratospheric aerosol distribution between years 2020 and 2070, instead of requiring the emission of SO_2 . The baseline simulation uses the RCP6.0 CMIP5 future projection (Taylor et al., 2012), as discussed below, (Figure 1, top panel). A different baseline scenario could be considered as well, for instance RCP4.5, which is used for the original GeoMIP G3 and G4 experiments and describes a very similar forcing in comparison to the RCP6.0 between 2020 and 2070. Even simpler experiments, like time-slice experiments for different climate and chemistry conditions, could be used to investigate the impact of changes to stratospheric aerosol loading.

The stratospheric sulphur burden of about 2 Tg S in form of sulphate was derived from the emission of 8 Tg SO_2 per year for 2 years until a steady-state distribution was reached (Figure 1, bottom panel). The burden has a larger radiative forcing than the original GeoMIP G4 experiment and will therefore lead to more robust deviations of climate variables from a baseline experiment than using a smaller emission case. A larger forcing has also a more pronounced impact on stratospheric dynam-

ics, in particular the QBO (Aquila et al., 2014). The derived stratospheric sulphur burden of about 2 Tg S counteracts the total anthropogenic radiative forcing of about -1.1 W/m^2 based on earlier model studies using ECHAM6 (Niemeier et al., 2013) and about -1.5 W/m^2 , based on the Community Earth System Model (CESM) (not shown), but may further vary between different models.

95 Microphysical model studies have shown that the most efficient reduction of the radiative forcing occurs for small emission rates into background conditions (Heckendorn et al., 2009; Niemeier et al., 2011; English et al., 2012). Larger burden of aerosols reduces the efficiency of additional aerosols to increase the planetary albedo. This is because large burdens of aerosol particles coagulate faster to form larger particles, which are less reflective per unit mass, and shorter-lived due to faster sedi-
100 mentation. This reveals important limitations of stratospheric aerosol geoengineering (see Table 1). Table 1 is based on a specific climate model, and the results will vary between different models. In the experiment proposed here, we assume a fixed aerosol emission rate per year, which allows the use of a monthly varying steady-state aerosol forcing file for the entire period, except for the ramp-up and ramp-down periods (see below).

105 The aerosol distribution for this experiment is derived using the middle atmosphere version of the General Circulation Model ECHAM5 (Roeckner et al., 2003) interactively coupled to a modified version of the aerosol microphysical model HAM (Stier et al., 2005). HAM calculates the formation of sulphate aerosol, which includes nucleation, accumulation, condensation, and coagulation processes. Aerosol size is determined using the M7 modal aerosol module (Vignati, 2004),
110 which calculates the aerosol size distribution using seven lognormal modes of prescribed standard deviation, or sigma. M7 was modified to allow for a better representation of stratospheric sulphur aerosol according to box-model studies (Kokkola et al., 2009) and previous geoengineering studies (Heckendorn et al., 2009). The changes include a smaller standard deviation (σ) of the coagulation mode (1.2 instead of 1.59) as the value of σ determines the development of the size distribution.
115 The simulation includes only sulphate aerosol. Besides the geoengineered sulphur, only dimethyl sulphide (DMS) and carbonyl sulphide (OCS) emissions are included in this setup and no anthropogenic emissions are assumed for the background (Niemeier et al., 2009). 8 Tg of SO_2 per year are emitted into a single grid box, 2.8×2.8 degrees in size, and located at a height of 60 hPa at the Equator. Further details on the model setup and the results are given by Niemeier et al. (2011).

120 The same model setup has also been used for simulations of the evolution of a sulphuric cloud after a volcanic eruption and was carefully tested against measurements taken after the 1991 Mt. Pinatubo eruption (Niemeier et al., 2009; Toohey et al., 2011). The results show a good representation of the particle size and the global aerosol load. The modelled global aerosol load decreases faster than the measurements one year after the eruption. This is probably related to the particle size being in the
125 upper range of the measurements and a slight overestimation of the poleward transport. The global distribution of the aerosols compares well to the updated time series by Sato et al. (1993, with update retrieved from data.giss.nasa.gov/modelforce/strataer), especially in the Southern Hemisphere, but it

shows an overestimation in the first months after the eruption and a shorter lifetime of the volcanic cloud within the tropics. Top-of-the-atmosphere shortwave radiative fluxes compare very well to
130 observations by the Earth Radiation Budget Experiment (Toohey et al., 2011) and we conclude that the transport of the aerosols into both hemispheres is well represented by the model based on observations. This model does not simulate a QBO and rather has a steady easterly phase of the QBO.

The aerosol distribution resulting from an 8 Tg SO₂ emission per year experiment would be
135 different from a distribution of a single volcanic eruption, as shown in Figure 2. Our calculated geoengineered aerosol distribution has higher surface area densities (SAD) than the Chemistry Climate Model Initiative (CCMI) stratospheric aerosol data for the year 1992, based on Stratospheric Aerosol and Gas Experiment (SAGE) II V6 satellite observations (Eyring et al., 2013), especially in the middle and high latitudes. This is due to the long-term emission of aerosols and because the
140 CCMI data set is averaged over a period where aerosols are already decaying. Also SAD and the aerosol burden are likely underestimated in the CCMI Pinatubo data set in high latitudes due to the lack of observational information and interpolation issues.

The prescribed aerosol distribution ramps up in the first 2 years and down in the last 2 years, consistent with the assumption that geoengineering is started and stopped abruptly. This will enable
145 the response of the atmosphere and ocean in the first few years following the start of geoengineering to be compared to the response of the climate system to a volcanic eruption with a one-off emission of a certain aerosol burden. Also, after termination of geoengineering, the simulations will be continued over the years 2070-2100, allowing the adjustment of the atmosphere and climate after a long-term application of aerosol loading to be compared to a short-term imposition of the radiative forcing
150 following a volcanic eruption

Due to the importance of stratospheric aerosols on radiation, chemistry, and dynamics, the proposed experiment is well suited to be coordinated with the CCMI efforts. Models engaged in CCMI include a comprehensive description of stratospheric and in part tropospheric chemistry. The CCMI defined core future experiment for chemistry-climate models is the REF-C2 experiment, covering
155 the period 1960 and 2100 and following the RCP6.0 CMIP5 future projection (Eyring et al., 2013). REF-C2 includes only background stratospheric aerosols, without the inclusion of potential future volcanic eruptions, and therefore serves well as a baseline for the proposed GeoMIP experiment. REF-C2 is designed to be fully coupled using a dynamic ocean and sea-ice to allow interactions between changes in chemistry and climate and, if possible, to produce an interactive QBO.

160 To perform G4SSA, the background aerosol forcing file should be replaced between 2020 and 2071 with the GeoMIP prescribed aerosols forcing file provided to the community. The zonal and monthly mean stratospheric aerosol input dataset is available at <https://www2.acd.ucar.edu/gcm/geomip-g4-specified-stratospheric-aerosol-data-set>. It includes mass and aerosol properties, and optical depth at 550 nm wavelength on vertical pressure levels. As for the CCMI aerosol forcing file, we

165 recommend removing the prescribed stratospheric aerosols below the model tropopause, because
tropospheric aerosols are included separately in the models.

3 Scientific questions that can be addressed with the proposed experiment

A variety of impacts of stratospheric aerosol geoengineering have been proposed, including changes
in ozone and ultraviolet radiation (UV) (Tilmes et al., 2012; Pitari et al., 2014), stratospheric chem-
170 istry and dynamics (e.g., Tilmes et al., 2009; Heckendorn et al., 2009; English et al., 2012), impacts
on the QBO (Aquila et al., 2014), and changes of the Hadley circulation (Niemeier et al., 2013).

Increased SAD due to the enhanced aerosol burden results in increased heterogeneous reactions.
In high latitudes, this would result in significantly more ozone depletion. In middle and low latitudes,
column ozone changes strongly depending on the stratospheric halogen burden, which should de-
175 crease through the 21st Century due to international agreements limiting ozone-depleting substances.
Pitari et al. (2014) compared four models and found that geoengineering would deplete global strato-
spheric ozone until the middle of this century, after which it would increase. Tilmes et al. (2012)
discussed the importance of very short-lived halogen components included in the models for quan-
tifying the effects of geoengineering on ozone and erythemal UV. Tropospheric chemistry may be
180 further impacted by the change stratospheric aerosol burden. The change in ozone column as well
as the scatter of aerosols changes the amount of UV reaching the troposphere, which likely impacts
the tropospheric chemical composition and the lifetimes of major gases.

Sulphate aerosols affect stratospheric dynamics (Robock, 2000). These impacts are only felt for
one or two years following a large tropical volcanic eruption, depending on the latitudinal distribu-
185 tion of the aerosols and the phase of the QBO (Trepte and Hitchman, 1992). The radiative heating
of stratospheric aerosols impacts the Brewer-Dobson circulation (BDC), the vertical velocity in the
tropics, and with it the chemical distribution of the stratosphere (Heckendorn et al., 2009; Tilmes
et al., 2009). Stratospheric circulation changes may further impact Upper Troposphere Lower Strato-
sphere exchange processes. Potential changes in the QBO may have additional significant impacts
190 on stratospheric dynamics with impacts on climate (Aquila et al., 2014). Changes in column ozone,
especially in high latitudes, also impact tropospheric circulation and the Southern Annual Mode
(e.g., Thompson et al., 2011). The quantification of those changes as a result of geoengineering and
their impact on surface climate, agriculture and other impacts, can be investigated by performing the
proposed experiment within a coordinated multi-model comparison study.

195 Other important effects cannot be investigated in the proposed experiment, since the stratospheric
aerosol distribution is prescribed. This includes interactions between the aerosol composition, the
dynamics, and transport of stratospheric aerosols into the troposphere, which may influence cloud
properties and with this precipitation, but also tropospheric heterogeneous reactions.

4 Summary and Conclusions

200 A new GeoMIP experiment “G4 specified stratospheric aerosols” (G4SSA) is proposed, using a pre-
scribed stratospheric aerosol distribution to estimate the impact of a 2 Tg S aerosol burden between
2020 and 2070 in climate and chemistry models. This burden is the result of a continuous tropi-
cal emission of 8 Tg SO₂ per year based on microphysical model calculations. Differences in the
chemical, dynamical, and climate response between the baseline simulation and the geoengineering
205 simulation can be investigated between the years 2030-2069, after the adjustment of the atmosphere
and the upper ocean. The impact of an abrupt termination of geoengineering can be investigated in
the years between 2070 and 2100.

The following scientific questions may be addressed with the proposed geoengineering experi-
ment, especially if performed in a multi-model framework like CCMI: What are the impacts of geo-
engineered stratospheric aerosols and the termination of geoengineering on chemical composition,
210 dynamics, and climate, in a changing future environment on

- Stratospheric chemistry, in particular ozone and its impact on UV?
- Tropospheric ozone, methane lifetime?
- Stratospheric dynamics, including stratospheric heating rates, BDC, and QBO?
- 215 – Tropospheric dynamics and temperatures?
- Climate, surface temperatures and precipitation?
- Environmental impacts and agriculture?

To address the different science questions specific capabilities of models are required. Changes in
tropospheric dynamics, temperatures, and precipitation can be investigated based on model results
220 from all GCMs, some of which may not include comprehensive chemistry. In addition, most of
the CCMI models are expected to be able to simulate interactions between and increased aerosol
layer in the stratosphere, stratospheric chemistry and dynamics, including changes of heating rates
and the BDC, as is the case when simulating past volcanic eruptions. An offline UV model may
be required to identify the impact on surface UV, as done by Tilmes et al. (2012). The impact
225 of geoengineering on the QBO can only be investigated if models produce the QBO interactively,
which may not be the case for any participating CCMI models. However, applying this experiment
to other GCMs may allow producing results to investigate this question. The results from models
that simulate tropospheric chemistry can be used to identify the impact on tropospheric ozone and
methane lifetime. Differences in the impact on methane lifetime will occur whether models prescribe
230 methane concentrations at the surface, which is likely the case, or they emit methane. Finally,
changes in agriculture and the environment due to geoengineering may not be addressed directly

from any model output at this time, but offline model simulations using crop models can be applied to investigate the impacts of geoengineering (e.g., Xia et al., 2014).

235 The proposed GeoMIP experiment is not intended to suggest a realistic geoengineering scenario, but is aimed at identifying potential changes to the climate system as a result of a long-term stratospheric aerosol forcing and an abrupt removal of this forcing. The use of a different microphysical model for deriving the prescribed aerosol burden, or different assumptions of aerosol properties and emission strategies may result in very different aerosol distributions (Pitari et al., 2014; Niemeier et al., 2011; English et al., 2012). For instance, the injection in a latitude band of 10 or 20 degrees
240 around the equator instead of right at the equator would result in a larger spread of aerosols into mid-latitudes (English et al., 2012; Pierce et al., 2010). However, the ECHAM5-HAM model tends to overestimate the transport into high latitudes and therefore may shift the aerosols too far towards the poles. Comprehensive microphysical simulations that include interactions between chemistry, clouds, dynamics and radiation are not available to date. Furthermore, geoengineering observations
245 are not available to evaluate the models and observations after volcanic eruptions, like Mt Pinatubo, only cover size distributions up to 0.6-0.7 microns. More work is needed to evaluate different microphysical models and differences of different emission schemes. Nevertheless, a multi-model comparison of chemistry-climate models using the same prescribed aerosol distribution would be of great relevance for the estimation of the effectiveness and risk of proposed climate engineering
250 approaches.

Acknowledgements. We thank Andrew Conley for helpful comments to the manuscript. Ben Kravitz is supported by the Fund for Innovative Climate and Energy Research (FICER). The Pacific Northwest National Laboratory is operated for the U.S. Department of Energy by Battelle Memorial Institute under contract DE-AC05-76RLO 1830. Alan Robock is supported by NSF grants GEO-1240507 and AGS-1157525. Ulrike Niemeier
255 is supported by the German Science foundations project SPP 1689 (Ceibal). Jason English is supported by NASA grant NNX09AK71G. The simulations were performed on the computers of the German Climate Computing Center (DKRZ). The CESM project is supported by the National Science Foundation and the Office of Science (BER) of the U. S. Department of Energy. The National Center for Atmospheric Research is funded by the National Science Foundation.

- Aquila, V., Garfinkel, C. I., Newman, P., Oman, L., and Waugh, D., Modifications of the quasi-biennial oscillation by a geoengineering perturbation of the stratospheric aerosol layer, *Geophysical Research Letters*, *41*, 1738–1744, <http://doi.wiley.com/10.1002/2013GL058818>, 2014.
- Berdahl, M., Robock, A., Ji, D., Moore, J. C., Jones, A., Kravitz, B., and Watanabe, S., Arctic cryosphere
265 response in the Geoengineering Model Intercomparison Project G3 and G4 scenarios, *Journal of Geophysical Research: Atmospheres*, *119*, 1308–1321, <http://doi.wiley.com/10.1002/2013JD020627>, 2014.
- Curry, C. L., Sillmann, J., Bronaugh, D., Alterskjaer, K., Cole, J. N. S., Ji, D., Kravitz, B., Kristjánsson, J. E.,
Moore, J. C., Muri, H., Niemeier, U., Robock, A., Tilmes, S., and Yang, S., A multimodel examination of climate
270 extremes in an idealized geoengineering experiment, *Journal of Geophysical Research: Atmospheres*,
119, 3900–3923, <http://doi.wiley.com/10.1002/2013JD020648>, 2014.
- English, J. M., Toon, O. B., and Mills, M. J., Microphysical simulations of sulfur burdens from stratospheric
sulfur geoengineering, *Atmospheric Chemistry and Physics*, *12*, 4775–4793, <http://www.atmos-chem-phys.net/12/4775/2012/>, 2012.
- Eyring, V., Lamarque, J.-F., and Hess, P., Overview of IGAC/SPARC Chemistry-Climate Model Initiative
275 (CCMI) Community Simulations in Support of Upcoming Ozone and Climate Assessments, Tech. rep.,
2013.
- Ferraro, A. J., Highwood, E. J., and Charlton-Perez, A. J., Weakened tropical circulation and reduced precipitation
in response to geoengineering, *Environmental Research Letters*, *9*, 014001, <http://stacks.iop.org/1748-9326/9/i=1/a=014001?key=crossref.878d5812d41285f5514acaa5402e63c3>, 2014.
- 280 Heckendorn, P., Weisenstein, D., Fueglistaler, S., Luo, B. P., Rozanov, E., Schraner, M., Thomason,
L. W., and Peter, T., The impact of geoengineering aerosols on stratospheric temperature and ozone, *Environmental Research Letters*, *4*, 045108, <http://stacks.iop.org/1748-9326/4/i=4/a=045108?key=crossref.dade9338b483538df3be60e23373263c>, 2009.
- Kokkola, H., Hommel, R., Kazil, J., Niemeier, U., Partanen, A.-I., Feichter, J., and Timmreck, C., Aerosol microphysics
285 modules in the framework of the ECHAM5 climate model intercomparison under stratospheric
conditions, *Geoscientific Model Development*, *2*, 97–112, <http://www.geosci-model-dev.net/2/97/2009/>,
2009.
- Kravitz, B., Robock, A., Boucher, O., Schmidt, H., Taylor, K. E., Stenchikov, G., and Schulz, M., The
Geoengineering Model Intercomparison Project (GeoMIP), *Atmospheric Science Letters*, *12*, 162–167,
290 <http://doi.wiley.com/10.1002/asl.316>, 2011.
- Kravitz, B., Caldeira, K., Boucher, O., Robock, A., Rasch, P. J., Alterskjaer, K., Karam, D. B., Cole, J. N. S.,
Curry, C. L., Haywood, J. M., Irvine, P. J., Ji, D., Jones, A., Kristjánsson, J. E., Lunt, D. J., Moore, J. C.,
Niemeier, U., Schmidt, H., Schulz, M., Singh, B., Tilmes, S., Watanabe, S., Yang, S., and Yoon, J.-H.,
Climate model response from the Geoengineering Model Intercomparison Project (GeoMIP), *Journal of*
295 *Geophysical Research: Atmospheres*, *118*, 8320–8332, <http://doi.wiley.com/10.1002/jgrd.50646>, 2013a.
- Kravitz, B., Robock, A., Forster, P. M., Haywood, J. M., Lawrence, M. G., and Schmidt, H., An overview of the
Geoengineering Model Intercomparison Project (GeoMIP), *Journal of Geophysical Research: Atmospheres*,
118, 13,103–13,107, <http://doi.wiley.com/10.1002/2013JD020569>, 2013b.
- Meinshausen, M., Smith, S. J., Calvin, K., Daniel, J. S., Kainuma, M. L. T., Lamarque, J.-F., Matsumoto, K.,

- 300 Montzka, S. A., Raper, S. C. B., Riahi, K., Thomson, A., Velders, G. J. M., and Vuuren, D. P., The RCP greenhouse gas concentrations and their extensions from 1765 to 2300, *Climatic Change*, 109, 213–241, <http://link.springer.com/10.1007/s10584-011-0156-z>, 2011.
- Moore, J. C., Rinke, A., Yu, X., Ji, D., Cui, X., Li, Y., Alterskjaer, K., Kristjánsson, J. E., Muri, H., Boucher, O., Huneus, N., Kravitz, B., Robock, A., Niemeier, U., Schulz, M., Tilmes, S., Watanabe, S., and Yang, S.,
- 305 Arctic sea ice and atmospheric circulation under the GeoMIP G1 scenario, *Journal of Geophysical Research: Atmospheres*, 119, 567–583, <http://doi.wiley.com/10.1002/2013JD021060>, 2014.
- Niemeier, U., Timmreck, C., Graf, H.-F., Kinne, S., Rast, S., and Self, S., Initial fate of fine ash and sulfur from large volcanic eruptions, *Atmospheric Chemistry and Physics*, 9, 9043–9057, <http://www.atmos-chem-phys.net/9/9043/2009/>, 2009.
- 310 Niemeier, U., Schmidt, H., and Timmreck, C., The dependency of geoengineered sulfate aerosol on the emission strategy, *Atmospheric Science Letters*, 12, 189–194, <http://doi.wiley.com/10.1002/asl.304>, 2011.
- Niemeier, U., Schmidt, H., Alterskjaer, K., and Kristjánsson, J. E., Solar irradiance reduction via climate engineering: Impact of different techniques on the energy balance and the hydrological cycle, *Journal of Geophysical Research: Atmospheres*, 118, 11,905–11,917, <http://doi.wiley.com/10.1002/2013JD020445>, 2013.
- 315 Pierce, J. R., Weisenstein, D. K., Heckendorn, P., Peter, T., and Keith, D. W., Efficient formation of stratospheric aerosol for climate engineering by emission of condensable vapor from aircraft, *Geophysical Research Letters*, 37, n/a–n/a, <http://doi.wiley.com/10.1029/2010GL043975>, 2010.
- Pitari, G., Aquila, V., Kravitz, B., Robock, A., Watanabe, S., Cionni, I., Luca, N. D., Genova, G. D., Mancini, E., and Tilmes, S., Stratospheric ozone response to sulfate geoengineering: Results from the Geoengineering
- 320 Model Intercomparison Project (GeoMIP), *Journal of Geophysical Research: Atmospheres*, 119, 2629–2653, <http://doi.wiley.com/10.1002/2013JD020566>, 2014.
- Robock, A., Volcanic eruptions and climate, *Reviews of Geophysics*, 38, 191–219, <http://doi.wiley.com/10.1029/1998RG000054>, 2000.
- Roeckner, E., Bäuml, G., Bonaventura, L., Brokopf, R., Esch, M., Giorgetta, M., Hagemann, S., Kirchner, I.,
- 325 Kornblueh, L., Manzini, E., Rhodin, A., Schlese, U., Schulzweida, U., and Tompkins, A., The atmospheric general circulation model ECHAM5 Part I, Tech. Rep. 349, 2003.
- Sato, M., Hansen, J. E., McCormick, M. P., and Pollack, J. B., Stratospheric aerosol optical depths, 18501990, *Journal of Geophysical Research*, 98, 22 987, <http://doi.wiley.com/10.1029/93JD02553>, 1993.
- Schmidt, H., Alterskjær, K., Bou Karam, D., Boucher, O., Jones, A., Kristjánsson, J. E., Niemeier, U., Schulz,
- 330 M., Aaheim, A., Benduhn, F., Lawrence, M., and Timmreck, C., Solar irradiance reduction to counteract radiative forcing from a quadrupling of CO₂: Climate responses simulated by four earth system models, *Earth System Dynamics*, 3, 63–78, <http://www.earth-syst-dynam.net/3/63/2012/>, 2012.
- Special Section on GeoMIP, *Journal of Geophysical Research*, [http://onlinelibrary.wiley.com/10.1002/\(ISSN\)2169-8996/specialsection/GEOMIP1](http://onlinelibrary.wiley.com/10.1002/(ISSN)2169-8996/specialsection/GEOMIP1), 2014.
- 335 Stier, P., Feichter, J., Kinne, S., Kloster, S., Vignati, E., Wilson, J., Ganzeveld, L., Tegen, I., Werner, M., Balkanski, Y., Schulz, M., Boucher, O., Minikin, A., and Petzold, A., The aerosol-climate model ECHAM5-HAM, *Atmospheric Chemistry and Physics*, 5, 1125–1156, <http://www.atmos-chem-phys.net/5/1125/2005/>, 2005.
- Taylor, K. E., Stouffer, R. J., and Meehl, G. A., An Overview of CMIP5 and the experiment design, *Bul-*

- 340 *letin of the American Meteorological Society*, 93, 485–498, <http://journals.ametsoc.org/doi/abs/10.1175/BAMS-D-11-00094.1>, 2012.
- Thompson, D. W. J., Solomon, S., Kushner, P. J., England, M. H., Grise, K. M., and Karoly, D. J., Signatures of the Antarctic ozone hole in Southern Hemisphere surface climate change, *Nature Geoscience*, 4, 741–749, <http://www.nature.com/doi/abs/10.1038/ngeo1296>, 2011.
- 345 Tilmes, S., Garcia, R. R., Kinnison, D. E., Gettelman, A., and Rasch, P. J., Impact of geoengineered aerosols on the troposphere and stratosphere, *Journal of Geophysical Research*, 114, D12 305, <http://www.agu.org/pubs/crossref/2009/2008JD011420.shtml>, 2009.
- Tilmes, S., Kinnison, D. E., Garcia, R. R., Salawitch, R., Canty, T., Lee-Taylor, J., Madronich, S., and Chance, K., Impact of very short-lived halogens on stratospheric ozone abundance and UV radiation
- 350 in a geo-engineered atmosphere, *Atmospheric Chemistry and Physics*, 12, 10945–10955, <http://www.atmos-chem-phys.net/12/10945/2012/>, 2012.
- Tilmes, S., Fasullo, J., Lamarque, J.-F., Marsh, D. R., Mills, M., Alterskjaer, K., Muri, H., Kristjánsson, J. E., Boucher, O., Schulz, M., Cole, J. N. S., Curry, C. L., Jones, A., Haywood, J., Irvine, P. J., Ji, D., Moore, J. C., Karam, D. B., Kravitz, B., Rasch, P. J., Singh, B., Yoon, J.-H., Niemeier, U., Schmidt, H., Robock,
- 355 A., Yang, S., and Watanabe, S., The hydrological impact of geoengineering in the Geoengineering Model Intercomparison Project (GeoMIP), *Journal of Geophysical Research: Atmospheres*, 118, 11,036–11,058, <http://doi.wiley.com/10.1002/jgrd.50868>, 2013.
- Toohey, M., Krüger, K., Niemeier, U., and Timmreck, C., The influence of eruption season on the global aerosol evolution and radiative impact of tropical volcanic eruptions, *Atmospheric Chemistry and Physics*,
- 360 11, 12 351–12 367, <http://www.atmos-chem-phys.net/11/12351/2011/>, 2011.
- Trepte, C. R. and Hitchman, M. H., Tropical stratospheric circulation deduced from satellite aerosol data, *Nature*, 355, 626–628, <http://www.nature.com/doi/abs/10.1038/355626a0>, 1992.
- Vignati, E., M7: An efficient size-resolved aerosol microphysics module for large-scale aerosol transport models, *Journal of Geophysical Research*, 109, D22 202, <http://doi.wiley.com/10.1029/2003JD004485>, 2004.
- 365 Xia, L., Robock, A., Cole, J., Curry, C. L., Ji, D., Jones, A., Kravitz, B., Moore, J. C., Muri, H., Niemeier, U., Singh, B., Tilmes, S., Watanabe, S., and Yoon, J.-H., Solar Radiation Management Impacts on Agriculture in China: A Case Study in the Geoengineering Model Intercomparison Project (GeoMIP), *Journal of Geophysical Research: Atmospheres*, pp. n/a–n/a, <http://doi.wiley.com/10.1002/2013JD020630>, 2014.

Table 1. Global average radiative forcing from a stratospheric sulphate aerosol cloud needed to counteract the anthropogenic radiative forcing from the RCP8.5 scenario (Niemeier et al., 2013). The third column shows the stratospheric aerosol emission rate per year required to produce this radiative forcing, in Tg SO₂ / yr, although the aerosols are sulphuric acid droplets. The rapidly increasing burden to counteract radiative forcing illustrates the disproportionate increase in sulphur emissions of greater than 2 W/m² due to effects of aerosol growth and removal processes and therefore demonstrates the limitations of stratospheric aerosol geoengineering. The uncertainty of these values drastically increases with increasing emission values larger 10 Tg SO₂ per year.

Year	W/m ²	Tg SO ₂ per year
2020.0	0	0.
2023.9	0.21	1.
2026.2	0.35	2.
2030.9	0.63	4.
2034.4	0.86	6.
2037.5	1.09	8.
2041.4	1.36	10.
2044.6	1.535	12.
2048.5	1.84	16.
2054.0	2.33	20.
2070.0	3.60	40.
2086.2	4.69	60.
2099.0	5.53	80.

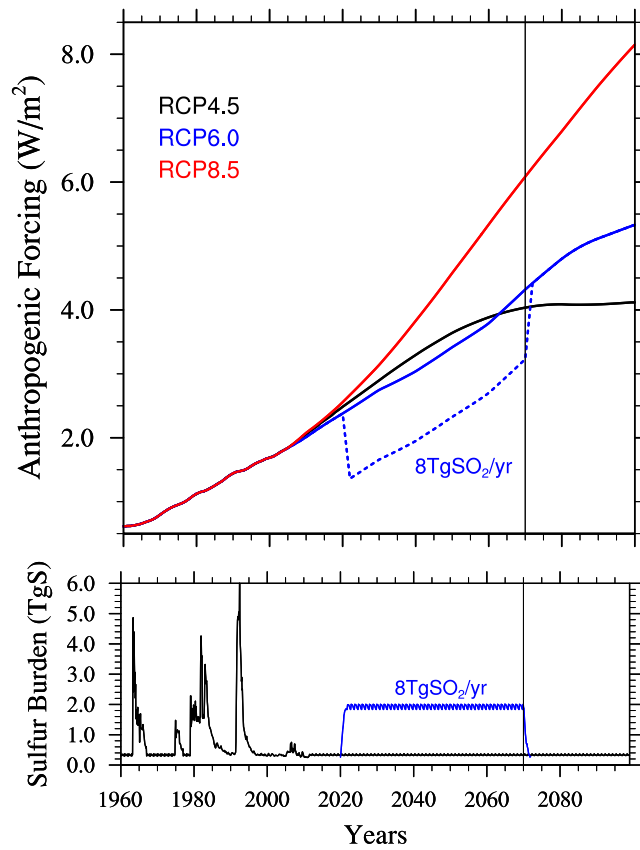


Fig. 1. Top panel: Total anthropogenic radiative forcing of the CMIP5 model experiments RCP4.5 (black), RCP6.0 (blue), and RCP8.5 (red) (Meinshausen et al., 2011). The dashed line indicates the radiative forcing of the GeoMIP experiment for CCMI, using a prescribed aerosol distribution assuming an emission of 8 Tg SO₂ per year. The amount of radiative forcing reduction due to the enhanced aerosol burden is estimated based on the ECHAM5-HAM model (see text). Bottom panel: Sulphur burden in Tg S (in form of H₂SO₄) per year, based in the CCMI prescribed aerosol data set (black) and the new GeoMIP experiment data set (blue), based on 8 Tg SO₂ emission per year case.

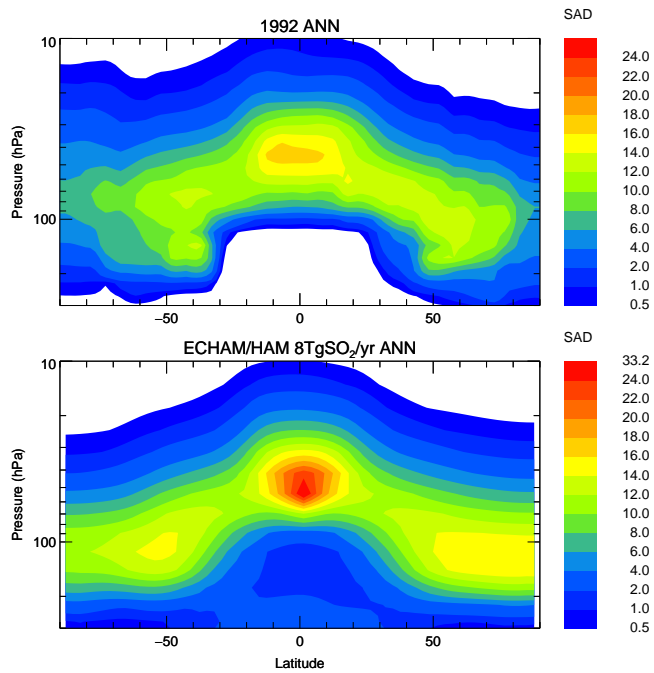


Fig. 2. Top panel: 1992 annual average surface area density (SAD) distribution in $\mu\text{m}^2/\text{cm}^3$ derived using the CCMI stratospheric aerosol data set (Eyring et al., 2013), following the 1991 Mt. Pinatubo volcanic eruption. Bottom panel: steady-state prescribed aerosol distribution of the proposed GeoMIP experiment, based on a 8 Tg SO_2 /year emission scenario using the ECHAM5-HAM model (Niemeier et al., 2013).