



This discussion paper is/has been under review for the journal Geoscientific Model Development (GMD). Please refer to the corresponding final paper in GMD if available.

Parameterizing deep convection using the assumed probability density function method

R. L. Storer¹, B. M. Griffin¹, J. Höft¹, J. K. Weber¹, E. Raut¹, V. E. Larson¹,
M. Wang², and P. J. Rasch²

¹University of Wisconsin – Milwaukee, Department of Mathematical Sciences, Milwaukee, WI, USA

²Pacific Northwest National Laboratory, Richland, WA, USA

Received: 12 April 2014 – Accepted: 24 April 2014 – Published: 11 June 2014

Correspondence to: R. L. Storer (rlstorer@ucsd.edu) and V. Larson (vlarson@uwm.edu)

Published by Copernicus Publications on behalf of the European Geosciences Union.

GMDD

7, 3803–3849, 2014

Parameterizing deep convection

R. L. Storer et al.

Title Page

Abstract

Introduction

Conclusions

References

Tables

Figures



Back

Close

Full Screen / Esc

Printer-friendly Version

Interactive Discussion



Abstract

Due to their coarse horizontal resolution, present-day climate models must parameterize deep convection. This paper presents single-column simulations of deep convection using a probability density function (PDF) parameterization. The PDF parameterization predicts the PDF of subgrid variability of turbulence, clouds, and hydrometeors. That variability is interfaced to a prognostic microphysics scheme using a Monte Carlo sampling method.

The PDF parameterization is used to simulate tropical deep convection, the transition from shallow to deep convection over land, and mid-latitude deep convection. These parameterized single-column simulations are compared with 3-D reference simulations. The agreement is satisfactory except when the convective forcing is weak.

The same PDF parameterization is also used to simulate shallow cumulus and stratocumulus layers. The PDF method is sufficiently general to adequately simulate these five deep, shallow, and stratiform cloud cases with a single equation set. This raises hopes that it may be possible in the future, with further refinements at coarse time step and grid spacing, to parameterize all cloud types in a large-scale model in a unified way.

1 Introduction

Deep convective clouds are an integral part of the climate system, yet representing these clouds accurately in climate models is a challenge. Explicitly resolving these clouds in decades-long climate simulations is not yet computationally feasible; thus it is beneficial to parameterize deep convection (e.g. Molinari and Dudek, 1992; Weisman et al., 1997; Warner and Hsu, 2000; Sato et al., 2009; Noda et al., 2010). Deep convective clouds are difficult to parameterize, however, partly because they produce copious ice and precipitation, which interact strongly with storm dynamics. For instance, convective rain may partially evaporate before reaching the ground, creating cold pools

GMDD

7, 3803–3849, 2014

Parameterizing deep convection

R. L. Storer et al.

Title Page

Abstract

Introduction

Conclusions

References

Tables

Figures

⏪

⏩

◀

▶

Back

Close

Full Screen / Esc

Printer-friendly Version

Interactive Discussion



that spawn further convection (e.g. Liu et al., 1997; Tompkins, 2001; Khairoutdinov and Randall, 2006).

Deep convection has often been parameterized by the use of mass-flux schemes (e.g. Arakawa and Schubert, 1974; Kain and Fritsch, 1990; Donner, 1993; Zhang and McFarlane, 1995; Arakawa, 2004; Kain, 2004; Gerard, 2007; Arakawa et al., 2011; Mapes and Neale, 2011; Bechtold et al., 2014). However, parameterization of deep convective clouds and turbulence may be aided by the use of the assumed probability density function (PDF) method. In the assumed PDF method, several lower-order subgrid moments are prognosed at each time step (e.g. Sommeria and Deardorff, 1977; Mellor, 1977; Smith, 1990; Lewellen and Yoh, 1993; Bony and Emanuel, 2001; Tompkins, 2002). The lower-order moments, along with an assumption about PDF shape, are used to estimate a joint PDF of subgrid scale (SGS) moisture, temperature, vertical velocity, and hydrometeors. The subgrid PDF is then used to calculate various unclosed higher-order moments that appear in the equation set, thereby allowing the solution to be advanced another time step.

PDF parameterizations possess several advantages for the purpose of parameterizing deep convection. First, the use of a PDF that includes hydrometeor species and vertical velocity allows for a detailed representation of microphysics and dynamics, and of the coupling between them. For instance, a PDF parameterization that *prognoses* lower-order moments is compatible with *prognostic* microphysics. The use of a prognostic microphysics scheme, in turn, allows for precipitation to be preserved between computational time steps, providing a better representation of hydrometeor collection (e.g. Posselt and Lohmann, 2009; Gettelman and Morrison, 2014). Representation of collection also benefits from the ability of PDF parameterizations to prescribe the correlations among hydrometeors, thereby estimating the degree of collocation among the hydrometeor types. Another benefit of a PDF parameterization is the detailed and rigorous treatment of the distribution of SGS vertical velocity, which in turn is important for parameterizing vertical turbulent transport.

Parameterizing deep convection

R. L. Storer et al.

Title Page

Abstract

Introduction

Conclusions

References

Tables

Figures

◀

▶

◀

▶

Back

Close

Full Screen / Esc

Printer-friendly Version

Interactive Discussion



Parameterizing deep convection

R. L. Storer et al.

Title Page

Abstract

Introduction

Conclusions

References

Tables

Figures



Back

Close

Full Screen / Esc

Printer-friendly Version

Interactive Discussion



Despite these advantages for parameterizing deep clouds, to date PDF parameterizations have been applied only to shallow clouds, except in higher-resolution cloud-resolving models (Cheng and Xu, 2006; Bogenschutz and Krueger, 2013) and except in Davies et al. (2013). The present paper takes a PDF parameterization, the Clouds Layers Unified By Binormals (CLUBB) parameterization, that has been used to simulate shallow clouds, and extends it in ways designed to better represent deep convection. In particular, the representation of the subgrid distribution of ice and precipitation is improved.

The modified version of CLUBB is then used to perform single-column simulations of three deep convective cases: a tropical case, a case of transition from shallow to deep convection, and a mid-latitude case. To demonstrate that the modified version of CLUBB can still simulate shallow cloud cases, we also simulate a shallow cumulus layer and stratocumulus layer. To assess the quality of the single-column CLUBB simulations, we compare the deep convective cases to cloud-resolving simulations and the shallow cases to large-eddy simulations.

The remainder of this paper is organized as follows. In Sect. 2, we will describe the single-column model CLUBB and the recent changes to it implemented in order to obtain improved simulations of deep convective clouds. In Sect. 3, results from CLUBB for three deep convective cases will be compared to cloud-resolving model simulations. In Sect. 4, we will show results of sensitivity tests to basic model setup, including reducing vertical and time resolution such as might be required to interface CLUBB with a climate model. In Sect. 5, we will show results of two simulations of shallow clouds, demonstrating that this model framework can be used in simulations of both deep and shallow cloud types. In Sect. 6, we will finish with discussion and conclusions.

2 Methodology

2.1 Description of single-column model: CLUBB-SILHS

Cloud Layers Unified By Binomials (CLUBB) is a single-column model of clouds and turbulence in the atmosphere (Golaz et al., 2002; Larson and Golaz, 2005; Larson and Griffin, 2013; Griffin and Larson, 2013). CLUBB is designed to model a variety of cloud types and turbulence regimes in a unified way with a single equation set. CLUBB parameterizes both cumulus and stratocumulus clouds, and both dry convective and stably stratified boundary layers. The equation set consists of prognostic equations for various subgrid-scale higher-order moments. The moments include variances of vertical velocity ($\overline{w'^2}$), total water mixing ratio ($\overline{r_t'^2}$), and liquid cloud water potential temperature ($\overline{\theta_1'^2}$). It also includes subgrid vertical turbulent fluxes of total water ($\overline{w'r_t'}$) and liquid cloud water potential temperature, $\overline{w'\theta_1'}$. (Here an overbar denotes a grid box average, and a prime denotes a subgrid deviation from a grid box average.) CLUBB's equation set is summarized in Bogenschutz et al. (2013). CLUBB has been coupled to the double-moment microphysics scheme of Morrison et al. (2009). The coupled model prognoses grid-mean number concentration and mixing ratios of rain, snow, graupel and cloud ice. The spatial variances of these hydrometeors are assumed to be proportional to the grid mean values squared.

CLUBB's equation set contains various higher-order moments that are unclosed. CLUBB closes many of these moments using the assumed probability density function (PDF) method. That is, CLUBB assumes a functional form of the subgrid PDF and integrates over it in order to estimate the unclosed moments. CLUBB's subgrid PDF is a single, multivariate PDF with a double Gaussian (sum of two normals) distribution for vertical velocity w , total water mixing ratio r_t , and liquid water potential temperature θ_1 (Larson et al., 2001) and a delta function/lognormal distribution for the hydrometeor variates (Griffin and Larson, 2014). The delta-lognormal PDF adds

GMDD

7, 3803–3849, 2014

Parameterizing deep convection

R. L. Storer et al.

Title Page

Abstract

Introduction

Conclusions

References

Tables

Figures

◀

▶

◀

▶

Back

Close

Full Screen / Esc

Printer-friendly Version

Interactive Discussion



a delta function representing precipitation-free areas to the lognormal distribution of Larson and Griffin (2013). It is described further in Sect. 2.2.1 below.

In order to drive microphysical processes, CLUBB has the option to call a microphysics scheme using a variant of traditional Monte Carlo sampling (McKay et al., 1979; Owen, 2003). This sampler is called the Subgrid Importance Latin Hypercube Sampler (SILHS, Larson et al., 2005; Larson and Schanen, 2013). SILHS draws one or more sample points per grid box and time step from CLUBB's joint subgrid PDF. SILHS collects a sample from each grid level into a subcolumn by assuming that correlation drops off exponentially with vertical distance and by using CLUBB's turbulent length scale to estimate the e-folding distance (Larson and Schanen, 2013). Each subcolumn is then fed into a microphysics scheme, one at a time. For each subcolumn, the microphysics scheme produces outputs, e.g. autoconversion rate. Then the resulting ensemble of autoconversion rates is averaged, yielding an estimate of the grid box mean autoconversion rate.

In summary, CLUBB-SILHS parameterizes subgrid variability as follows (Larson and Schanen, 2013):

1. *Construct the multivariate PDF of subgrid-scale variability (performed by CLUBB).* CLUBB predicts a single, joint PDF for each grid box and time step that contains the following variates: heat content, moisture content, vertical velocity, and all relevant hydrometeor mixing ratios and number concentrations.
2. *Draw subcolumns from the subgrid PDF (performed by SILHS).* A sample point is drawn from each grid level. These sample points, taken together, form a single vertically correlated profile, i.e. "subcolumn". The sampling is repeated until a set of subcolumns is constructed that collectively approximates the statistical properties of the grid column.
3. *Feed subcolumns into physical parameterizations and compute process rate tendencies (performed by a microphysics scheme).* Each subcolumn is fed into

Parameterizing deep convection

R. L. Storer et al.

Title Page

Abstract

Introduction

Conclusions

References

Tables

Figures

◀

▶

◀

▶

Back

Close

Full Screen / Esc

Printer-friendly Version

Interactive Discussion



a microphysics scheme. For each subcolumn, the microphysics scheme computes a separate tendency.

4. *Average microphysics tendencies from each subcolumn to form a grid box average profile.* The set of tendencies is averaged to form a grid box mean tendency, which can then be fed back into the appropriate host model equations. The average may be a weighted average, with each subcolumn corresponding to different-sized area within the grid column.

The computational cost of CLUBB-SILHS is acceptable. CLUBB adds 20% to the computational cost of Version 5 of the Community Atmosphere Model (CAM5, Bogen-schutz et al., 2013). SILHS's computational cost, when two sample points are used, is similar to that of CLUBB (Larson and Schanen, 2013).

Both CLUBB and SILHS are contained in a single svn code repository that is freely available for non-commercial use at <http://clubb.larson-group.com>. The simulations presented here can be reproduced by checking out svn revision 6840 of the branch located at http://carson.math.uwm.edu/repos/clubb_repos/branches/storer_et_al_paper_clubb/, compiling the source code, and running `./run_scm_all.bash`. Complete details of all algorithms are available in the source code in the svn repository, along with numerous code comments and a README file that serves as a user manual. SAM output used for plotting and for prescribing radiative forcing can be found at <http://www.larson-group.com/storer/>.

2.2 Coupling subgrid variability to liquid and ice microphysics

In order to better simulate deep convection using CLUBB, we have generalized the treatment of subgrid variability. In particular, we have generalized CLUBB's multivariate PDF to include ice, incorporated the effects of ice and rain on subgrid buoyancy production, improved the vertical transport of hydrometeors, and allowed changes in the microphysics to affect scalar fluxes and variances.

Parameterizing deep convection

R. L. Storer et al.

Title Page

Abstract

Introduction

Conclusions

References

Tables

Figures



Back

Close

Full Screen / Esc

Printer-friendly Version

Interactive Discussion



2.2.1 Subgrid PDF of hydrometeors

CLUBB represents vertical velocity, liquid water potential temperature, and total water mixing ratio using a double Gaussian PDF. However, a double Gaussian is unbounded and hence is not well suited to representing hydrometeors. In this context, hydrometeors include the mixing ratios and number concentrations of cloud ice, snow, graupel, and rain. These quantities are non-negative but often have small values.

In order to represent hydrometeors realistically and fully, a subgrid PDF should have two features. First, it should be multivariate, so that it can represent the collection of one hydrometeor species by another. Second, the subgrid PDF should include a hydrometeor-free region, so that hydrometeors do not suffer excessive evaporation or sublimation in otherwise clear regions.

The marginal subgrid PDF shape that we choose for the hydrometeor variates is a sum of a delta function and a multivariate lognormal. The delta function represents the portion of a grid box that is devoid of all hydrometeors (except liquid cloud droplets). The multivariate lognormal represents the hydrometeor-filled portion, i.e. the precipitation fraction. Details of the formulation of the lognormal are provided by the source code and in Larson and Griffin (2013) and in Griffin and Larson (2013). Although those papers used a multivariate lognormal to represent only the number concentration and mixing ratio of rain, here the multivariate lognormal is extended straightforwardly to represent the within-hydrometeor number concentrations and mixing ratios of all hydrometeors except liquid cloud water, which is diagnosed via saturation adjustment from total water.

At altitudes above the freezing level, the precipitation fraction is set equal to the fraction of a grid box that is supersaturated with respect to ice. Below the freezing level, the precipitation fraction is determined by a calculation similar to that of Morrison and Gettelman (2008). More details of the formulation are provided in Griffin and Larson (2014) and the source code.

GMDD

7, 3803–3849, 2014

Parameterizing deep convection

R. L. Storer et al.

Title Page

Abstract

Introduction

Conclusions

References

Tables

Figures

◀

▶

◀

▶

Back

Close

Full Screen / Esc

Printer-friendly Version

Interactive Discussion



The assumed PDF method requires that variances of each variate be provided. The within-hydrometeor standard deviation (σ_j) of the i th hydrometeor mixing ratio or number concentration, with mean μ_j , is calculated as

$$\sigma_j = \sqrt{V_j} \mu_j, \quad (1)$$

where V_j is the prescribed constant ratio between the variance and the mean squared of each variate. Values for V_j used in the single-column simulations are provided in Table 1.

For multivariate PDFs, correlations among hydrometeor species must also be provided. In these simulations, the correlations are prescribed, with values based loosely on cloud-resolving simulations. However, CLUBB assumes that the correlations are constant within cloud, unlike the cloud-resolving simulations. Correlations used for cloudy levels are shown in Table 2. As with the variances, the correlations are within-hydrometeor values. In future work, instead of prescribing correlations, one could attempt to diagnose correlations, following, e.g., Larson et al. (2011).

2.2.2 Incorporating the effects of latent heating of ice and rain on subgrid turbulence

Turbulence kinetic energy and turbulent fluxes of heat and moisture are influenced by the buoyancy of air parcels in local updrafts and downdrafts. The buoyancy variable in CLUBB is the virtual potential temperature θ_v , where θ_v includes the effects on buoyancy of water vapor and cloud droplet loading. In CLUBB, buoyancy affects turbulence through four buoyancy generation terms that appear on the right-hand side of prognostic equations for moments. If g/θ_0 denotes the acceleration due to gravity divided by a constant reference temperature, then $(g/\theta_0)\overline{w'\theta'_v}$ is a buoyancy term that generates (that is, contributes to the tendency of) $\overline{w'^2}$, $(g/\theta_0)\overline{w'^2\theta'_v}$ generates $\overline{w'^3}$, $(g/\theta_0)\overline{\theta'_1\theta'_v}$ generates $\overline{w'\theta'_1}$, and $(g/\theta_0)\overline{r'_1\theta'_v}$ generates $\overline{w'r'_1}$. These buoyancy terms, in turn, are



influenced by latent heating associated with phase change of hydrometeors and gravitational loading due to hydrometeors.

In prior versions of CLUBB, the only source of latent heating *for the higher-order moments* was condensation and evaporation of liquid cloud droplets, and the only source of loading was cloud liquid water mixing ratio. In other words, in the aforementioned four generation terms, the buoyancy perturbation θ'_v accounted only for variability due to the latent heating and water loading associated with cloud water mixing ratio. (However, *grid-mean* values of θ_1 in prior versions of CLUBB were subject to the latent heating associated with rain and ice hydrometeors, where relevant, through microphysical calculations.)

For the present simulations, we have incorporated a crude method to account for the latent heating and water loading associated with rain and ice hydrometeors in the four aforementioned buoyancy generation terms. Namely, we assume that

1. For the purpose of calculating the four buoyancy generation terms, rain and all ice hydrometeors are assumed to be perfectly correlated in space with cloud water mixing ratio.
2. Latent heat of sublimation is approximated as the latent heat of vaporization for the buoyancy generation terms (but not grid means), thereby neglecting the latent heat of fusion and incurring a 12 % error.

With these two (crude) assumptions, CLUBB's calculation of the four buoyancy generation terms remains unchanged, except that total condensate – including cloud liquid water, rain and ice mixing ratios – is input into the calculation in place of cloud liquid water. Conservation of heat and moisture for *grid means* still holds because the two assumptions only apply to the buoyancy generation terms. In the future, however, it would be desirable to relax these two assumptions.

Parameterizing deep convection

R. L. Storer et al.

Title Page

Abstract

Introduction

Conclusions

References

Tables

Figures



Back

Close

Full Screen / Esc

Printer-friendly Version

Interactive Discussion



2.2.3 Parameterizing transport of hydrometeors

Turbulent updrafts and downdrafts transport hydrometeors in the vertical, thereby acting to broaden the vertical extent of the hydrometeor profiles. In CLUBB, the tendency of turbulence to broaden the hydrometeor profiles is modeled by eddy diffusion. Although it is not obvious a priori that an eddy diffusion model is appropriate for cumulus layers, our large-eddy simulations indicate that eddy diffusion parameterizes the sign of hydrometeor transport satisfactorily in cumulus layers, but that the magnitude of the eddy diffusion is one or two orders of magnitude larger in cumulus than in stratocumulus layers (not shown).

CLUBB models the transport of a generic hydrometeor, r_x , as

$$\overline{w' r'_x} = -cK \frac{\partial \overline{r_x}}{\partial z} \quad (2)$$

where w denotes the vertical velocity, $c = 0.75$ a dimensionless constant, and z the altitude. The eddy diffusivity for hydrometeors, K , is given by

$$K = \sqrt{e}L \left(\frac{\sqrt{r'_x{}^2}}{\overline{r_x}} \right) (1 + |Sk_w|) \quad (3)$$

where e is the subgrid turbulence kinetic energy and L is CLUBB's turbulent mixing length (Golaz et al., 2002; Larson et al., 2012). The two last factors in parentheses are designed to increase K by up to a factor of 100 in cumulus layers while leaving K small in stratocumulus layers. These two factors rely on the fact that spatial variability of rain and skewness of vertical velocity, Sk_w , are larger in cumulus layers than in stratocumulus layers.

Title Page

Abstract

Introduction

Conclusions

References

Tables

Figures

◀

▶

◀

▶

Back

Close

Full Screen / Esc

Printer-friendly Version

Interactive Discussion



2.2.4 Allowing microphysical sources to influence subgrid distribution shape

Microphysical processes influence not only grid-box means, but also the *shape* of the subgrid PDF. For instance, microphysical processes such as autoconversion and accretion occur preferentially in moister portions of a grid box. Such processes, in conjunction with sedimentation of precipitation, tend to remove moisture from the moistest part of a grid box, thereby diminishing the variance of total water in cloud layers (Khairoutdinov and Randall, 2002). In addition, evaporation of rain below cloud may at times occur in the coolest part of a grid box, thereby increasing variance of temperature below cloud. The increased sub-cloud temperature variance may, in principle, help initiate further convection.

These effects are estimated using SILHS subcolumns. Each subcolumn is fed into the microphysics separately, and each produces a separate microphysical update to r_t and θ_l . Therefore, the sample variance among the set of subcolumns is different before and after the microphysics is computed. This change in variance can be added as a source term in CLUBB's prognostic equation for the scalar variance of r_t or θ_l . A similar calculation is made for the scalar fluxes of r_t and θ_l .

For a generic variable x , SILHS estimates the microphysical source as

$$\left(\frac{\partial \overline{x^2}}{\partial t} \right)_{\text{microphys}} \approx \frac{\text{Var}(x)|_{\text{after}} - \text{Var}(x)|_{\text{before}}}{\Delta t} \quad (4)$$

where $\text{Var}(x)$ is the sample variance of x among subcolumns, which is calculated before and after the call to the microphysics, t denotes time, and Δt is the time between microphysics calculations. Here

$$\text{Var}(x) = \sum_{i=1}^n p_i (x_i - \bar{x})^2 \quad (5)$$

where n is the number of subcolumns, x_i is the value of x in the i th subcolumn, \bar{x} is the average over all subcolumns, and p_i is the probability of choosing subcolumn i .

The probability p_i equals $1/n$ in the case of equally weighted subcolumns, and the probability weights must sum to 1. An analogous calculation is performed in order to update covariances between two variates.

In our simulations, the following prognostic moments are updated by microphysical source terms: $\overline{r_t'^2}$, $\overline{\theta_t'^2}$, $\overline{r_t'\theta_t'}$, $\overline{w'r_t'}$, and $\overline{w'\theta_t'}$. The prognostic equations for moments that involve only w , such as $\overline{w'^2}$ and $\overline{w'^3}$, do not contain microphysical source terms, even in theory.

2.3 Model configurations and case descriptions

The following analysis compares two models, a single-column model (CLUBB-SILHS), and a 3-D cloud-resolving/large-eddy model (System for Atmospheric Modeling, SAM, Khairoutdinov and Randall, 2003) that provides reference simulations.

In order to assess the feasibility of unified parameterization, CLUBB-SILHS's configuration of all shallow and deep cloud layers is identical, other than case-specific options for droplet number concentration and radiative transfer that are described below. For all cloud cases, CLUBB-SILHS uses a 1 min computational time step and a 128-level stretched vertical grid, with a vertical grid spacing of approximately 100 m at an altitude of 1000 m. CLUBB-SILHS's microphysics is identical to the Morrison microphysics option in SAM, which is a two-moment scheme that predicts cloud water, rain, cloud ice, snow, and graupel (Morrison et al., 2009). (However, our simulations prescribe cloud droplet number.) SILHS generates 16 sample subcolumns per time step.

We compare each CLUBB-SILHS single-column simulation with a three-dimensional simulation performed by SAM. In order to help isolate model errors in CLUBB-SILHS, we configure SAM and CLUBB-SILHS identically in a number of aspects. Namely, SAM uses the same two-moment microphysics scheme, the same value of within-cloud droplet number concentration, and the same treatment of radiative transfer. SAM is set up similarly in shallow and deep cases, except that SAM uses smaller grid

Parameterizing deep convection

R. L. Storer et al.

Title Page

Abstract

Introduction

Conclusions

References

Tables

Figures



Back

Close

Full Screen / Esc

Printer-friendly Version

Interactive Discussion



spacing and time step for the shallow cases. More SAM options for all cases are described below in Table 3.

2.3.1 Deep convective cases

We choose to simulate three deep convective cases that have been studied in prior model intercomparisons, in part because doing so allows us to compare our 3-D simulations with those intercomparison results, building confidence in our 3-D simulations. We configure the deep convective simulations as per previous model intercomparisons of those cases. For deep convective cases, both SAM and CLUBB-SILHS prescribe droplet number concentration to be 100 cm^{-3} , and both use the same 128-level vertical grid. SAM uses 1 km grid spacing in the horizontal.

The first deep convective case we present is from the Tropical Warm Pool International Cloud Experiment (TWP-ICE), which took place near Darwin, Australia in early 2006 (May et al., 2008). The TWP-ICE case is a week-long simulation, beginning on 19 January and exhibiting multiple diurnal cycles of convective activity. Large-scale conditions are set up for the SAM simulation as in previous model intercomparison studies (Fridlind et al., 2012; Davies et al., 2013). Radiation in the SAM simulation is calculated by the Rapid Radiation Transfer Model (RRTM) (Iacono et al., 2008), and radiative heating values from SAM output are used to prescribe radiation in CLUBB-SILHS.

The second case was taken from the Tropical Rainfall Measuring Mission Large-Scale Biosphere-Atmosphere (TRMM-LBA) experiment which took place in Brazil in early 1999 (Silva Dias et al., 2002). The LBA case occurred on 23 February, and consists of the transition from shallow to deep convection over land from early morning to early afternoon. Model configurations for SAM and CLUBB-SILHS follow a previous model intercomparison (Grabowski et al., 2006; Khairoutdinov and Randall, 2006). In this case, both SAM and CLUBB-SILHS use prescribed radiation, as specified in the intercomparison.

Parameterizing deep convection

R. L. Storer et al.

Title Page

Abstract

Introduction

Conclusions

References

Tables

Figures

◀

▶

◀

▶

Back

Close

Full Screen / Esc

Printer-friendly Version

Interactive Discussion



Parameterizing deep convectionR. L. Storer et al.

[Title Page](#)[Abstract](#)[Introduction](#)[Conclusions](#)[References](#)[Tables](#)[Figures](#)[I◀](#)[▶I](#)[◀](#)[▶](#)[Back](#)[Close](#)[Full Screen / Esc](#)[Printer-friendly Version](#)[Interactive Discussion](#)

Third, we examine a mid-latitude summertime deep convective case that occurred during the 1997 Intensive Observation Period of the Atmospheric Radiation Measurement (ARM) program (ARM97). ARM97 is a 4 day simulation starting on 26 June that exhibits two weak precipitating convective events followed by a strong convective event.

5 We configure the case as in a previous intercomparison (Xu et al., 2002; Khairoutdinov and Randall, 2003). As in TWP-ICE, SAM uses RRTM to compute radiation, and SAM output is used to prescribe radiation in the CLUBB-SILHS simulation.

2.3.2 Shallow cloud-layer cases

10 The shallow cases are configured as in previous intercomparison studies, including the appropriate options for radiation and cloud drop number concentration. The vertical grid spacing and time step for CLUBB-SILHS are identical to that used for the deep convective cases. SAM's configuration is summarized in Table 3.

15 The first shallow case we present is a 3 day simulation of drizzling trade-wind cumulus clouds observed during the Rain in shallow Cumulus over the Ocean (RICO) field campaign (Raubert et al., 2007). We configure RICO as in the intercomparison of van Zanten et al. (2011). As per the intercomparison specifications, we prescribe a cloud drop number concentration of 70 cm^{-3} in both CLUBB-SILHS and SAM, and radiation is turned off in both models.

20 The second shallow case was taken from the Dynamics and Chemistry Of Marine Stratocumulus (DYCOMS-II) field campaign (Stevens et al., 2003). We simulate the Research Flight 2 (RF02) case, which is a 6 h simulation of a nocturnal drizzling stratocumulus layer off the coast of California (Wyant et al., 2007). DYCOMS-II RF02 uses a cloud drop number concentration of 55 cm^{-3} in both CLUBB-SILHS and SAM simulations (Ackerman et al., 2009). Both models use a simplified analytic radiation model
25 which ties radiative heating to the liquid water path (Stevens et al., 2005; Wyant et al., 2007; Larson et al., 2007).

3 Results: simulated time series and profiles

This section presents time series and profiles from our tropical deep convective case (TWP-ICE), our shallow-to-deep transitional case (LBA), and our mid-latitude deep convective case (ARM97). For each of the three cases, we plot time series of the following vertically averaged quantities: liquid water path (LWP), rain water path (RWP), cloud ice water path (IWP), and snow water path (SWP). In addition, we plot profiles from selected time periods of liquid water potential temperature (θ_l), total water mixing ratio (vapor + cloud liquid water) (r_t), the fraction of a grid box that is occupied by liquid cloud water, and liquid cloud water mixing ratio (r_c).

3.1 Tropical deep convection: TWP-ICE

Time series of the four vertically integrated quantities from the TWP-ICE simulation are shown in Fig. 1. This was a convectively active period, and a strong diurnal signal can be seen in the time series. Because TWP-ICE is a tropical case, rainfall rate at the surface is constrained by surface evaporation rates. Instead, we show rain water path. Rain water path simulated by CLUBB-SILHS mimics that in SAM. LWP in CLUBB-SILHS is too high compared to SAM, particularly in the convectively active periods, suggesting that CLUBB-SILHS's precipitation efficiency is too low. CLUBB-SILHS accurately simulates time series of cloud ice and snow water paths.

Figure 2 depicts four profiles averaged over the heaviest precipitation event, which occurs during minutes 6000–8000. In this case, CLUBB-SILHS agrees well with SAM and exhibits only a few discrepancies. Liquid water potential temperature (θ_l) is slightly too cool in the mid and upper levels, and the cloud fraction is slightly too large in the lower levels. Figure 3 shows mean profiles of the mixing ratios of hydrometeors, again averaged over the strongest convective episode. All of CLUBB-SILHS's profiles reproduce the corresponding SAM profiles results well.

GMDD

7, 3803–3849, 2014

Parameterizing deep convection

R. L. Storer et al.

Title Page

Abstract

Introduction

Conclusions

References

Tables

Figures

◀

▶

◀

▶

Back

Close

Full Screen / Esc

Printer-friendly Version

Interactive Discussion



3.2 Transition from shallow to deep convection: LBA

LBA is a difficult case to simulate because it evolves substantially over a short (six-hour) time period as it transitions from shallow to deep convection. Hence it is a challenge to simulate the timing of ice and precipitation formation. Time series from LBA are shown in Fig. 4. LWP in CLUBB-SILHS matches that in SAM well until the last hour of simulation time. In the last hour, LWP is depleted too much because rain forms more than an hour too late, and when it does form, it produces excessive rain water path. The rain is delayed because precipitation efficiency is too low during the early period of weak forcing, possibly because of an inaccurate representation of the correlations among hydrometeors. The simulation overestimates cloud ice water path because the simulation produces too much cloud liquid aloft (Fig. 5).

Figure 5 shows profiles averaged over the last hour of the simulation, by which point the convection in SAM has reached a mature stage. CLUBB-SILHS's profiles of θ_1 and r_t match those of SAM because none of the mean profiles has time to evolve during the six-hour simulation. However, CLUBB-SILHS produces too much cloud liquid in the upper levels. CLUBB-SILHS's hydrometeor profiles agree with those in SAM, with the exception of cloud ice mixing ratio (Fig. 6). Cloud ice is overpredicted because the excess liquid aloft leads to large rates of contact nucleation (not shown).

3.3 Mid-latitude continental convection: ARM97

Time series plots for ARM97 are shown in Fig. 7. The timing and magnitude of LWP is reasonably captured in CLUBB-SILHS. In the first convective event, however, CLUBB-SILHS's cloud does not grow deep enough for the production of ice, and little rain is produced. The later convective episodes are better simulated, although CLUBB-SILHS's time series are too noisy.

Mean profiles for ARM97 are shown in Fig. 8, averaged over the third and strongest convective event (minutes 4320–5580). Similar to what was seen in TWP-ICE, θ_1 in CLUBB-SILHS is too cool aloft, and r_t and cloud fraction are too large through the

Title Page

Abstract

Introduction

Conclusions

References

Tables

Figures



Back

Close

Full Screen / Esc

Printer-friendly Version

Interactive Discussion



lowest 6–7 km of the column. Hydrometeor profiles (Fig. 9) match fairly well to the SAM CRM simulation, though CLUBB-SILHS does not produce enough ice aloft. The undesirably low precipitation efficiency seen in TWP-ICE is also evident in this case, as too much liquid is needed to produce the correct amount of rain.

4 Effects of our new methodology on deep convective simulations

Two of the changes to CLUBB described in Sect. 2.2 have significant effects on the simulation of deep convection.

First, improving the PDF for hydrometeors by including non-zero precipitation fraction (Sect. 2.2.1) improved LBA (Fig. 10). With the previous formulation, liquid cloud water increases to overly large values by the end of the simulation, and the excessive cloud water nucleates to form excessive cloud ice. However, no rain forms during the 6 h simulation. The use of non-zero precipitation fraction improves (increases) the precipitation efficiency of CLUBB-SILHS, allowing rain to form and remove excessive liquid cloud water.

Second, it turns out to be important for the simulations of deep convective cases to have strong turbulent transport of hydrometeors. The changes introduced to the eddy diffusivity calculation in Sect. 2.2.3 allow for stronger values in convective cases (while not degrading shallow cases, as shown in Sect. 6). Larger values of eddy diffusivity smooth the profiles of hydrometeors and transport hydrometeors farther upward, leading to closer agreement with SAM (see Fig. 11).

The other two methodological changes – adding latent heating to subgrid moments (Sect. 2.2.2) and adding microphysical source terms to prognosed second-order moments (Sect. 2.2.4) – have more minor effects on the simulations.

Parameterizing deep convection

R. L. Storer et al.

Title Page

Abstract

Introduction

Conclusions

References

Tables

Figures



Back

Close

Full Screen / Esc

Printer-friendly Version

Interactive Discussion



5 Sensitivity to time step, number of samples, and vertical grid spacing

Aside from the errors explicitly mentioned above, the CLUBB-SILHS results presented here agree well with SAM. However, the configuration of CLUBB-SILHS used – with its fine vertical resolution, short time step, and numerous sample points – is computationally expensive. In this section, we present results that use configurations that are more computationally affordable.

Simulations presented in prior sections use a 1 min time step. Figure 12 plots the effects on the deep convective simulations of increasing the time step to 5 min; the two lines plotted represent identical simulations except for the time step. A profile of cloud fraction is shown alongside a time series of snow water path for each case in order to illustrate the changes that occur when changing the time step. The timing of convective events is little affected. However, the cases are too convectively active, leading to too much cloud fraction aloft. This may be partly related to an underprediction of sub-cloud evaporative cooling that occurs when prognostic microphysics schemes with sequential time splitting of sedimentation allow hydrometeors to sediment long distances between calls to the microphysical sources and sinks, such as evaporation (personal communication, H. Morrison, March 2014).

It is possible to use CLUBB-SILHS with any (even) number of subcolumns. Using more subcolumns leads to better sampling and hence more accurate estimates of averages of SGS variability (Larson and Schanen, 2013). However, feeding fewer subcolumns into the microphysics scheme reduces computational cost. We have presented results using 16 subcolumns, which is a compromise between accuracy and computational cost. Shown in Fig. 13 are the results of reducing the number of sample columns from 16 to 4. The results are similar, with the exception of LBA, which, with 4 sample points, does not produce surface precipitation, thereby permitting large amounts of cloud water to remain aloft.

Computational cost can also be reduced by coarsening the vertical resolution. To test the effects of this, Fig. 14 plots simulations of the deep convective cases, configured

GMDD

7, 3803–3849, 2014

Parameterizing deep convection

R. L. Storer et al.

Title Page

Abstract

Introduction

Conclusions

References

Tables

Figures



Back

Close

Full Screen / Esc

Printer-friendly Version

Interactive Discussion



identically as before except that they use the 30-level stretched grid that is used in the Community Atmosphere Model (CAM) climate model (Neale et al., 2012). The simulations are adequate, but they are too convectively active and contain too much condensate. This is particularly apparent in LBA, which again has excessive cloud water aloft because the precipitation efficiency is too low. Nevertheless, the simulations show initial promise.

6 How does the generalized coupling to microphysics influence shallow cloud simulations?

Using the same configuration as used for the deep convective cases, we also simulate two shallow cloud cases. We find that these two cases are not degraded by the modifications introduced into CLUBB-SILHS in order to improve deep convective simulations.

Results from the RICO shallow cumulus case are shown in Fig. 15. CLUBB-SILHS simulates this trade-wind cumulus case reasonably well, although CLUBB-SILHS underestimates cloud liquid water. However, the underestimate is not introduced by the modifications to CLUBB-SILHS. Rather, these errors are typical of some prior versions of CLUBB.

Results from the DYCOMS-II RF02 drizzling stratocumulus simulation are shown in Fig. 16. The mean fields are comparable to those in SAM, although, once again, cloud liquid and rain water path are underestimated in the CLUBB-SILHS simulation. The underestimate of liquid is mostly attributable not to the modifications made to CLUBB, but rather to the coarse resolution of CLUBB-SILHS vs. SAM – in the 128-level grid, only 15 levels reside in the lowest 1200 m of the domain. At higher resolutions, CLUBB-SILHS simulates greater liquid water content for the DYCOMS-II RF02 case (Griffin and Larson, 2013).

Although further study is necessary, the fact that reasonable results can be obtained for shallow convection with the same model configuration as for deep convection hints

Parameterizing deep convection

R. L. Storer et al.

Title Page

Abstract

Introduction

Conclusions

References

Tables

Figures

◀

▶

◀

▶

Back

Close

Full Screen / Esc

Printer-friendly Version

Interactive Discussion



that a unified PDF parameterization may indeed be possible, with one equation set representing all turbulence and cloud types.

7 Conclusions

This paper presents single-column simulations of deep and shallow cloud layers. To simulate these clouds, our model contains one component (CLUBB) that estimates the subgrid PDF of clouds, turbulence, and hydrometeors, and a second component (SILHS) that draws samples from this PDF and feeds them into a microphysics scheme. This methodology provides a detailed representation of subgrid dynamics and hydrometeors, and also provides a mechanism to couple the two at the subgrid scale. The detailed coupling is particularly important for deep convection, which has strong interactions between dynamics and microphysics.

Most of the simulated fields are satisfactory, although there exist a few deficiencies. One is that rain forms 100 min too late in the LBA case of transition from shallow to deep convection (see Fig. 4). Another deficiency is that precipitation does not form in the first of the three convective events in ARM97 (see Fig. 7). Both these deficiencies suggest that CLUBB-SILHS produces insufficient precipitation when convection is weakly forced. Furthermore, when CLUBB-SILHS's time step is degraded to 5 min (see Fig. 12) or the number of vertical grid levels is degraded to 30 (see Fig. 14), the simulated updrafts are too strong, the surface precipitation is too weak, and too much cloud forms aloft. Again, these are symptoms of low precipitation efficiency.

Nevertheless, CLUBB-SILHS produces quite acceptable overall results for both deep and shallow simulations. In particular, most profiles of clouds and hydrometeors match those of SAM acceptably, given the stochastic nature of convective precipitation. What ingredients in CLUBB-SILHS allow it to simulate deep convection? One is CLUBB-SILHS's detailed representation of and coupling between turbulence and microphysics, and in particular, ice microphysics. CLUBB-SILHS uses a delta-lognormal subgrid PDF of hydrometeors, which allows the possibility of a hydrometeor-free region of a grid

Parameterizing deep convection

R. L. Storer et al.

Title Page

Abstract

Introduction

Conclusions

References

Tables

Figures



Back

Close

Full Screen / Esc

Printer-friendly Version

Interactive Discussion



Parameterizing deep convection

R. L. Storer et al.

Title Page

Abstract

Introduction

Conclusions

References

Tables

Figures



Back

Close

Full Screen / Esc

Printer-friendly Version

Interactive Discussion



box and also allows the hydrometeors to fall preferentially through liquid cloud water. This, in turn, allows more precipitation to reach the ground, reducing cloud water aloft (see Fig. 10). Although the precipitation efficiency is still somewhat too low in the simulations, the delta-lognormal PDF does improve precipitation efficiency. Another key ingredient is vertical turbulent transport of hydrometeors, which increases the altitude reached by snow and other hydrometeors.

These simulations suggest that – with improvements at coarse time steps and vertical grid spacings – it is feasible to develop a unified parameterization of deep convection, shallow convection, stratiform clouds, and turbulence. Such a parameterization would parameterize all cloud types in a large-scale model with a single equation set. A unified parameterization would avoid the artificial categorization of clouds that is inherent in parameterization suites that use separate schemes for separate regimes. Use of a unified parameterization would also make it easier to ensure consistency of assumptions throughout a model. Greater consistency, in turn, would instill more confidence in a model's formulation.

Acknowledgements. Co-authors from University of Wisconsin – Milwaukee acknowledge support by the Office of Science, US Department of Energy, under grants DE-SC0008668 (BER) and DE-SC0008323 (Scientific Discoveries through Advanced Computing, SciDAC). P. Rasch was supported by SciDAC, and M. Wang was supported by SciDAC and the DOE Atmospheric System Research (ASR) Program. The Pacific Northwest National Laboratory is operated for DOE by Battelle Memorial Institute under contract DE-AC06-76RLO 1830. The authors would like to thank Mikhail Ovchinnikov and Steven Ghan for helpful discussions.

References

Ackerman, A. S., van Zanten, M. C., Stevens, B., Savic-Jovicic, V., Bretherton, C. S., Chlond, A., Golaz, J.-C., Jiang, H., Khairoutdinov, M., Krueger, S. K., Lewellen, D. C., Lock, A., Moeng, C.-H., Nakamura, K., Petters, M. D., Snider, J. R., Weinbrecht, S., and Zulauf, M.: Large-eddy simulations of a drizzling, stratocumulus-topped marine boundary layer, *Mon. Weather Rev.*, 137, 1083–1110, doi:10.1175/2008MWR2582.1, 2009. 3817

Parameterizing deep convection

R. L. Storer et al.

Title Page

Abstract

Introduction

Conclusions

References

Tables

Figures

◀

▶

◀

▶

Back

Close

Full Screen / Esc

Printer-friendly Version

Interactive Discussion



- Arakawa, A.: The cumulus parameterization problem: past, present, and future, *J. Climate*, 17, 2493–2525, 2004. 3805
- Arakawa, A. and Schubert, W. H.: Interaction of a cumulus cloud ensemble with the large-scale environment, Part I, *J. Atmos. Sci.*, 31, 674–701, 1974. 3805
- 5 Arakawa, A., Jung, J.-H., and Wu, C.-M.: Toward unification of the multiscale modeling of the atmosphere, *Atmos. Chem. Phys.*, 11, 3731–3742, doi:10.5194/acp-11-3731-2011, 2011. 3805
- Bechtold, P., Semane, N., Lopez, P., Chaboureau, J.-P., Beljaars, A., and Bormann, N.: Representing equilibrium and nonequilibrium convection in large-scale models, *J. Atmos. Sci.*, 71, 734–753, 2014. 3805
- 10 Bogenschutz, P. A. and Krueger, S. K.: A simplified PDF parameterization of subgrid-scale clouds and turbulence for cloud-resolving models, *J. Adv. Model. Earth Syst.*, 5, 195–211, doi:10.1002/jame.20018, 2013. 3806
- Bogenschutz, P. A., Gettelman, A., Morrison, H., Larson, V. E., Craig, C., and Schanen, D. P.: Higher-order turbulence closure and its impact on climate simulations in the Community Atmosphere Model, *J. Climate*, 26, 9655–9676, doi:10.1175/JCLID-13-00075.1, 2013. 3807, 3809
- 15 Bony, S. and Emanuel, K. A.: A parameterization of the cloudiness associated with cumulus convection; Evaluation using TOGA COARE data, *J. Atmos. Sci.*, 58, 3158–3183, 2001. 3805
- Cheng, A. and Xu, K.-M.: Simulation of shallow cumuli and their transition to deep convective clouds by cloud-resolving models with different third-order turbulence closures, *Q. J. Roy. Meteorol. Soc.*, 132, 359–382, 2006. 3806
- 20 Davies, L., Jakob, C., Cheung, K., Genio, A. D., Hill, A., Hume, T., Keane, R. J., Komori, T., Larson, V. E., Lin, Y., Liu, X., Nielsen, B. J., Petch, J., Plant, R. S., Singh, M. S., Shi, X., Song, X., Wang, W., Whitall, M. A., Wolf, A., Xie, S., and Zhang, G.: A single-column model ensemble approach applied to the TWP-ICE experiment, *J. Geophys. Res.*, 118, 6544–6563, doi:10.1002/jgrd.50450, 2013. 3806, 3816
- 25 Donner, L. J.: A cumulus parameterization including mass fluxes, vertical momentum dynamics, and mesoscale effects, *J. Atmos. Sci.*, 50, 889–906, 1993. 3805
- Fridlind, A. M., Ackerman, A. S., Chaboureau, J.-P., Fan, J., Grabowski, W. W., Hill, A. A., Jones, T. R., Khaiyer, M. M., Liu, G., Minnis, P., Morrison, H., Nguyen, L., Park, S., Petch, J. C., Pinty, J.-P., Schumacher, C., Shipway, B. J., Varble, A. C., Wu, X., Xie, S.,

Parameterizing deep convection

R. L. Storer et al.

Title Page

Abstract

Introduction

Conclusions

References

Tables

Figures

I ◀

▶ I

◀

▶

Back

Close

Full Screen / Esc

Printer-friendly Version

Interactive Discussion



and Zhang, M.: A comparison of TWP-ICE observational data with cloud-resolving model results, *J. Geophys. Res.*, 117, D05204, doi:10.1029/2011JD016595, 2012. 3816

Gerard, L.: An integrated package for subgrid convection, clouds and precipitation compatible with meso-gamma scales, *Q. J. Roy. Meteorol. Soc.*, 133, 711–730, 2007. 3805

5 Gettelman, A. and Morrison, H.: Advanced two-moment bulk microphysics for global models, Part I: Off-line tests and comparison with other schemes, *J. Climate*, submitted, 2014. 3805

Golaz, J.-C., Larson, V. E., and Cotton, W. R.: A PDF-based model for boundary layer clouds, Part I: Method and model description, *J. Atmos. Sci.*, 59, 3540–3551, 2002. 3807, 3813

10 Grabowski, W. W., Bechtold, P., Cheng, A., Forbes, R., Halliwell, C., Khairoutdinov, M., Lang, S., Nasuno, T., Petch, J., Tao, W. K., Wong, R., Wu, X., and Xu, K. M.: Daytime convective development over land: a model intercomparison based on LBA observations, *Q. J. Roy. Meteorol. Soc.*, 132, 317–344, 2006. 3816

Griffin, B. M. and Larson, V. E.: Analytic upscaling of local microphysics parameterizations, Part II: Simulations, *Q. J. Roy. Meteorol. Soc.*, 139, 58–69, 2013. 3807, 3810, 3822

15 Griffin, B. M. and Larson, V. E.: A multivariate subgrid probability density function for hydrometeors, *Geosci. Model Dev.*, in preparation, 2014. 3807, 3810

Iacono, M. J., Delamere, J. S., Mlawer, E. J., Shephard, M. W., Clough, S. A., and Collins, W. D.: Radiative forcing by long-lived greenhouse gases: calculations with the AER radiative transfer models, *J. Geophys. Res.*, 113, D13103, doi:10.1029/2008JD009944, 2008. 3816

20 Kain, J. S.: The Kain–Fritsch convective parameterization: an update, *J. Appl. Meteorol.*, 43, 170–181, 2004. 3805

Kain, J. S. and Fritsch, J. M.: A one-dimensional entraining/detraining plume model and its application in convective parameterization, *J. Atmos. Sci.*, 47, 2784–2802, 1990. 3805

25 Khairoutdinov, M. and Randall, D. A.: Similarity of deep continental cumulus convection as revealed by a three-dimensional cloud-resolving model, *J. Atmos. Sci.*, 59, 2550–2566, 2002. 3814

Khairoutdinov, M. and Randall, D. A.: Cloud resolving modeling of the ARM summer 1997 IOP: model formulation, results, uncertainties, and sensitivities, *J. Atmos. Sci.*, 60, 607–624, 2003. 3815, 3817

30 Khairoutdinov, M. and Randall, D. A.: High-resolution simulation of shallow-to-deep convection transition over land, *J. Atmos. Sci.*, 63, 3421–3436, 2006. 3805, 3816

Parameterizing deep convection

R. L. Storer et al.

Title Page

Abstract

Introduction

Conclusions

References

Tables

Figures

◀

▶

◀

▶

Back

Close

Full Screen / Esc

Printer-friendly Version

Interactive Discussion



Larson, V. E. and Golaz, J.-C.: Using probability density functions to derive consistent closure relationships among higher-order moments, *Mon. Weather Rev.*, 133, 1023–1042, 2005. 3807

Larson, V. E. and Griffin, B. M.: Analytic upscaling of local microphysics parameterizations, Part I: derivation, *Q. J. Roy. Meteor. Soc.*, 139, 46–57, 2013. 3807, 3808, 3810

Larson, V. E. and Schanen, D. P.: The Subgrid Importance Latin Hypercube Sampler (SILHS): a multivariate subcolumn generator, *Geosci. Model Dev.*, 6, 1813–1829, doi:10.5194/gmd-6-1813-2013, 2013. 3808, 3809, 3821

Larson, V. E., Wood, R., Field, P. R., Golaz, J.-C., Vonder Haar, T. H., and Cotton, W. R.: Small-scale and mesoscale variability of scalars in cloudy boundary layers: One-dimensional probability density functions, *J. Atmos. Sci.*, 58, 1978–1994, 2001. 3807

Larson, V. E., Golaz, J.-C., Jiang, H., and Cotton, W. R.: Supplying local microphysics parameterizations with information about subgrid variability: latin hypercube sampling, *J. Atmos. Sci.*, 62, 4010–4026, 2005. 3808

Larson, V. E., Kotenberg, K. E., and Wood, N. B.: An analytic longwave radiation formula for liquid layer clouds, *Mon. Weather Rev.*, 135, 689–699, 2007. 3817

Larson, V. E., Nielsen, B. J., Fan, J., and Ovchinnikov, M.: Parameterizing correlations between hydrometeors in mixed-phase Arctic clouds, *J. Geophys. Res.*, 116, D00T02, doi:10.1029/2010JD015570, 2011. 3811

Larson, V. E., Schanen, D. P., Wang, M., Ovchinnikov, M., and Ghan, S.: PDF parameterization of boundary layer clouds in models with horizontal grid spacings from 2 to 16 km, *Mon. Weather Rev.*, 140, 285–306, 2012. 3813

Lewellen, W. S. and Yoh, S.: Binormal model of ensemble partial cloudiness, *J. Atmos. Sci.*, 50, 1228–1237, 1993. 3805

Liu, C., Moncrieff, M. W., and Zipser, E. J.: Dynamical influence of microphysics in tropical squall lines: a numerical study, *Mon. Weather. Rev.*, 125, 2193–2210, 1997. 3805

Mapes, B. and Neale, R.: Parameterizing convective organization to escape the entrainment dilemma, *J. Adv. Model. Earth Syst.*, 3, M06004, doi:10.1029/2011MS000042, 2011. 3805

May, P. T., Mather, J. H., Vaughan, G., Bower, K. N., Jakob, C., McFarquhar, G. M., and Mace, G. G.: The tropical warm pool international cloud experiment, *B. Am. Meteorol. Soc.*, 89, 629–645, 2008. 3816

Parameterizing deep convection

R. L. Storer et al.

Title Page

Abstract

Introduction

Conclusions

References

Tables

Figures

I◀

▶I

◀

▶

Back

Close

Full Screen / Esc

Printer-friendly Version

Interactive Discussion



- McKay, M. D., Beckman, R. J., and Conover, W. J.: A comparison of three methods for selecting values of input variables in the analysis of output from a computer code, *Technometrics*, 21, 239–245, 1979. 3808
- Mellor, G. L.: The Gaussian cloud model relations, *J. Atmos. Sci.*, 34, 356–358, 1977. 3805
- 5 Molinari, J. and Dudek, P.: Parameterization of convective precipitation in mesoscale numerical models: a critical review, *Mon. Weather Rev.*, 120, 326–344, 1992. 3804
- Morrison, H. and Gettelman, A.: A new two-moment bulk stratiform cloud microphysics scheme in the Community Atmosphere Model, version 3 (CAM3), Part I: Description and numerical tests, *J. Climate*, 21, 3642–3659, 2008. 3810
- 10 Morrison, H., Thompson, G., and Tatarskii, V.: Impact of cloud microphysics on the development of trailing stratiform precipitation in a simulated squall line: comparison of one- and two-moment schemes, *Mon. Weather Rev.*, 137, 993–1009, 2009. 3807, 3815
- Neale, R. B., Gettelman, A., Park, S., Chen, C.-C., Lauritzen, P. H., Williamson, D. L., Conley, A. J., Kinnison, D., Marsh, D., Smith, A. K., Vitt, F., Garcia, R., Lamarque, J.-F., Mills, M., Tilmes, S., Morrison, H., Cameron-Smith, P., Collins, W. D., Iacono, M. J., Easter, R. C., Ghan, S. J., Liu, X., Rasch, P. J., and Taylor, M. A.: Description of the NCAR Community Atmosphere Model (CAM5.0), Tech. Rep. NCAR/TN-486+STR, National Center for Atmospheric Research, Boulder, CO, USA, 2012. 3822
- 15 Noda, A. T., Oouchi, K., Satoh, M., Tomita, H., Iga, S.-I., and Tsushima, Y.: Importance of the subgrid-scale turbulent moist process: cloud distribution in global cloud-resolving simulations, *Atmos. Res.*, 96, 208–217, 2010. 3804
- Owen, A. B.: Quasi-Monte Carlo Techniques, in: *Siggraph 2003, Course 44*, Association for Computing Machinery, San Diego, CA, 2003. 3808
- Posselt, R. and Lohmann, U.: Sensitivity of the total anthropogenic aerosol effect to the treatment of rain in a global climate model, *Geophys. Res. Lett.*, 36, L02805, doi:10.1029/2008GL035796, 2009. 3805
- 25 Rauber, R. M., Stevens, B., Ochs, H. T., Knight, C., Albrecht, B. A., Blyth, A. M., Fairall, C. W., Jensen, J. B., Lasher-Trapp, S. G., Mayol-Bracero, O. L., Vali, G., Anderson, J. R., Baker, B. A., Bandy, A. R., Burnet, E., Brenguier, J.-L., Brewer, W. A., Brown, P. R. A., Chuang, P., Cotton, W. R., Girolamo, L. D., Geerts, B., Gerber, H., Göke, S., Gomes, L., Heikes, B. G., Hudson, J. G., Kollias, P., Lawson, R. P., Krueger, S. K., Lenschow, D. H., Nuijens, L., O’Sullivan, D. W., Rilling, R. A., Rogers, D. C., Siebesma, A. P., Snodgrass, E., Stith, J. L., Thornton, D. C., Tucker, S., Twohy, C. H., Zuidema, P., Sperber, K. R., and
- 30

Parameterizing deep convection

R. L. Storer et al.

Title Page

Abstract

Introduction

Conclusions

References

Tables

Figures

I ◀

▶ I

◀

▶

Back

Close

Full Screen / Esc

Printer-friendly Version

Interactive Discussion



- Waliser, D. E.: Rain in shallow cumulus over the ocean: the RICO campaign, *B. Am. Meteorol. Soc.*, 88, 1912–1928, 2007. 3817
- Sato, T., Miura, H., Satoh, M., Takayabu, Y. N., and Wang, Y.: Diurnal cycle of precipitation in the tropics simulated in a global cloud-resolving model, *J. Climate*, 22, 4809–4826, 2009. 3804
- Silva Dias, M. A. F., Rutledge, S., Kabat, P., Silva Dias, P. L., Nobre, C., Fisch, G., Dolman, A. J., Zipser, E., Garstang, M., Manzi, A. O., Fuentes, J. D., Rocha, H. R., Marengo, J., Plana-Fattori, A., Sá, L. D. A., Alvalá, R. C. S., Andreae, M. O., Artaxo, P., Gielow, R., and Gatti, L.: Cloud and rain processes in a biosphere-atmosphere interaction context in the Amazon region, *J. Geophys. Res.*, 107, 8072, doi:10.1029/2001JD000335, 2002. 3816
- Smith, R. N. B.: A scheme for predicting layer clouds and their water content in a general circulation model, *Q. J. Roy. Meteorol. Soc.*, 116, 435–460, 1990. 3805
- Sommeria, G. and Deardorff, J. W.: Subgrid-scale condensation in models of nonprecipitating clouds, *J. Atmos. Sci.*, 34, 344–355, 1977. 3805
- Stevens, B., Lenschow, D. H., Vali, G., Gerber, H., Bandy, A., Blomquist, B., Brenguier, J.-L., Bretherton, C. S., Burnet, F., Campos, T., Chai, S., Faloon, I., Friesen, D., Haimov, S., Laursen, K., Lilly, D. K., Loehrer, S. M., Malinowski, S. P., Morley, B., Petters, M. D., Rogers, D. C., Russell, L., Savic-Jovicic, V., Snider, J. R., Straub, D., Szumowski, M. J., Takagi, H., Thornton, D. C., Tschudi, M., Twohy, C., Wetzell, M., and Van Zanten, M. C.: Dynamics and chemistry of marine stratocumulus – DYCOMS-II, *B. Am. Meteorol. Soc.*, 84, 579–593, 2003. 3817
- Stevens, B., Moeng, C.-H., Ackerman, A. S., Bretherton, C. S., Chlond, A., de Roode, S., Edwards, J., Golaz, J.-C., Jiang, H., Khairoutdinov, M., Kirkpatrick, M. P., Lewellen, D. C., Lock, A., Müller, F., Stevens, D. E., Whelan, E., and Zhu, P.: Evaluation of large-eddy simulations via observations of nocturnal marine stratocumulus, *Mon. Weather Rev.*, 133, 1443–1462, 2005. 3817
- Tompkins, A. M.: Organization of tropical convection in low vertical wind shears: the role of cold pools, *J. Atmos. Sci.*, 58, 1650–1672, 2001. 3805
- Tompkins, A. M.: A prognostic parameterization for the subgrid-scale variability of water vapor and clouds in large-scale models and its use to diagnose cloud cover, *J. Atmos. Sci.*, 59, 1917–1942, 2002. 3805
- vanZanten, M., Stevens, B., Nuijens, L., Siebesma, A., Ackerman, A., Burnet, F., Cheng, A., Couvreux, F., Jiang, H., Khairoutdinov, M., Kogan, Y., Lewellen, D., Mechem, D., Naka-

Parameterizing deep convection

R. L. Storer et al.

Title Page

Abstract

Introduction

Conclusions

References

Tables

Figures

◀

▶

◀

▶

Back

Close

Full Screen / Esc

Printer-friendly Version

Interactive Discussion



mura, K., Noda, A., Shipway, B., Slawinska, J., Wang, S., and Wyszogrodzki, A.: Controls on precipitation and cloudiness in simulations of trade-wind cumulus as observed during RICO, *Journal of Advances in Modeling Earth Systems*, 3, M06001, doi:10.1029/2011MS000056, 2011. 3817

5 Warner, T. T. and Hsu, H.-M.: Nested-model simulation of moist convection: the impact of coarse-grid parameterized convection on fine-grid resolved convection, *Mon. Weather Rev.*, 128, 2211–2231, 2000. 3804

Weisman, M. L., Skamarock, W. C., and Klemp, J. B.: The resolution dependence of explicitly modeled convective systems, *Mon. Weather Rev.*, 125, 527–548, 1997. 3804

10 Wyant, M. C., Bretherton, C. S., Chlond, A., Griffin, B. M., Kitagawa, H., Lappen, C.-L., Larson, V. E., Lock, A., Park, S., de Roode, S. R., Uchida, J., Zhao, M., and Ackerman, A. S.: A single-column-model intercomparison of a heavily drizzling stratocumulus topped boundary layer, *J. Geophys. Res.*, 112, D24204, doi:10.1029/2007JD008536, 2007. 3817

15 Xu, K.-M., Cederwall, R. T., Donner, L. J., Grabowski, W. W., Guichard, F., Johnson, D. E., Khairoutdinov, M., Krueger, S. K., Petch, J. C., and Randall, D. A.: An intercomparison of cloud-resolving models with the atmospheric radiation measurement summer 1997 intensive observation period data, *Q. J. Roy. Meteor. Soc.*, 128, 593–624, 2002. 3817

20 Zhang, G. J. and McFarlane, N. A.: Sensitivity of climate simulations to the parameterization of cumulus convection in the Canadian Climate Centre general circulation model, *Atmos. Ocean*, 33, 407–446, 1995. 3805

Parameterizing deep convection

R. L. Storer et al.

Table 1. The prescribed ratio (V_i) between the within-precipitation variance and the mean squared of hydrometeors. Below-cloud values are the same values as used for cloudy levels.

Variable	Variance Ratio
Rain Mixing Ratio	4.0
Rain Number Concentration	2.0
Snow Mixing Ratio	1.0
Snow Number Concentration	0.5
Cloud Ice Mixing Ratio	1.0
Cloud Ice Number Concentration	0.5
Graupel Mixing Ratio	1.0
Graupel Number Concentration	0.5

[Title Page](#)
[Abstract](#)
[Introduction](#)
[Conclusions](#)
[References](#)
[Tables](#)
[Figures](#)
[I◀](#)
[▶I](#)
[◀](#)
[▶](#)
[Back](#)
[Close](#)
[Full Screen / Esc](#)
[Printer-friendly Version](#)
[Interactive Discussion](#)


Parameterizing deep convection

R. L. Storer et al.

Table 2. Hydrometeor correlations used for all 5 cases. Shown are the within-cloud values. For below cloud, an another correlation table is used, and for our purposes is identical except for the correlation between s and t . This correlation is set to 0.3 below cloud. The correlation matrix is symmetric, so the values below the diagonal are not filled in.

s	t	w	Ncn	r _{rain}	Nr	rice	Ni	rsnow	Nsnow	r _{graupel}	Ng
1.0	-0.6	0.09	0.09	0.5	0.5	0.2	0.2	0.2	0.2	0.2	0.2
	1.0	0.027	0.027	0.0726	0.0855	-0.024	0.084	0.018	0.012	0.0	0.0
		1.0	0.34	0.2	0.2	0.1	0.15	0.0	0.0	0.0	0.0
			1.0	0.0	0.0	0.39	0.29	0.14	0.21	0.0	0.0
				1.0	0.7	0.0	0.0	0.1	0.1	0.2	0.2
					1.0	0.1	0.1	0.0	0.0	0.2	0.2
						1.0	0.7	0.5	0.5	0.3	0.3
							1.0	0.5	0.5	0.3	0.3
								1.0	0.7	0.4	0.4
									1.0	0.4	0.4
										1.0	0.7
											1.0

Title Page

Abstract

Introduction

Conclusions

References

Tables

Figures

I◀

▶I

◀

▶

Back

Close

Full Screen / Esc

Printer-friendly Version

Interactive Discussion



Parameterizing deep convection

R. L. Storer et al.

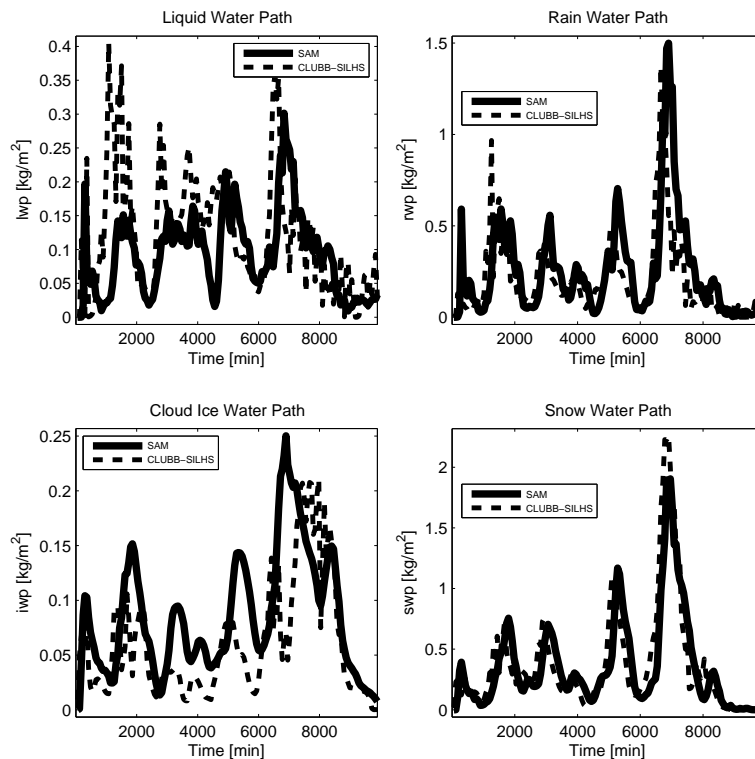


Figure 1. Time series of liquid water path (upper left), rain water path (upper right), ice water path (lower left), and snow water path (lower right) from the TWP-ICE deep convective simulation. Liquid water path is too high in the CLUBB-SILHS simulation, suggesting a low precipitation efficiency; however the other hydrometeors follow SAM fairly closely.

[Title Page](#)[Abstract](#)[Introduction](#)[Conclusions](#)[References](#)[Tables](#)[Figures](#)[I◀](#)[▶I](#)[◀](#)[▶](#)[Back](#)[Close](#)[Full Screen / Esc](#)[Printer-friendly Version](#)[Interactive Discussion](#)

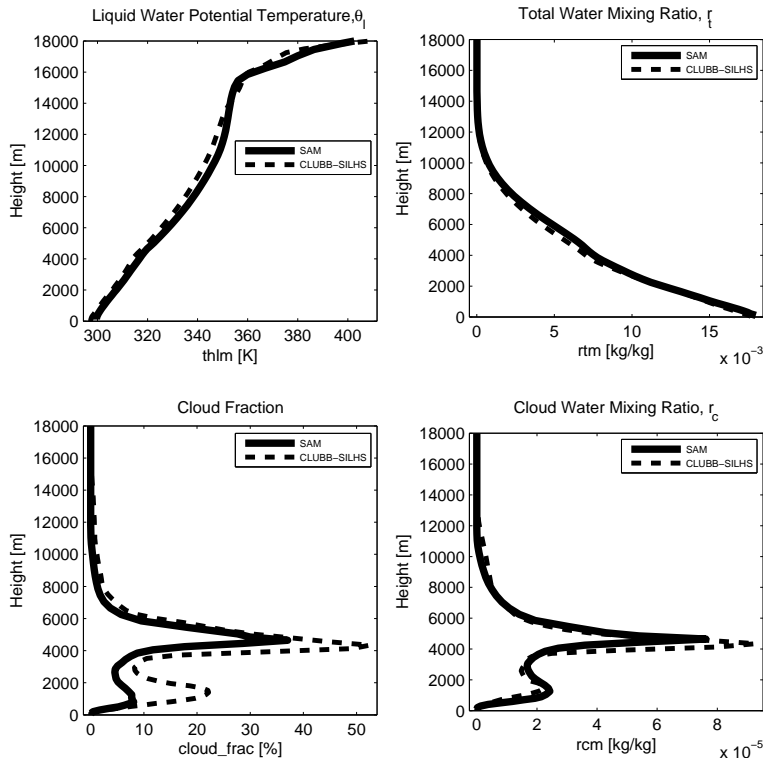


Figure 2. Profiles of liquid water potential temperature (θ_l) (upper left), total water mixing ratio (r_t) (vapor + liquid) (upper right), cloud fraction (lower left), and cloud water mixing ratio (lower right) from the TWP-ICE deep convective simulation. Profiles are averaged over minutes 6000–8000, capturing the strongest convective event. CLUBB-SILHS matches SAM well, with some small differences notable in θ_l and cloud fraction.

Parameterizing deep convection

R. L. Storer et al.

Title Page

Abstract Introduction

Conclusions References

Tables Figures

◀ ▶

◀ ▶

Back Close

Full Screen / Esc

Printer-friendly Version

Interactive Discussion



Parameterizing deep convection

R. L. Storer et al.

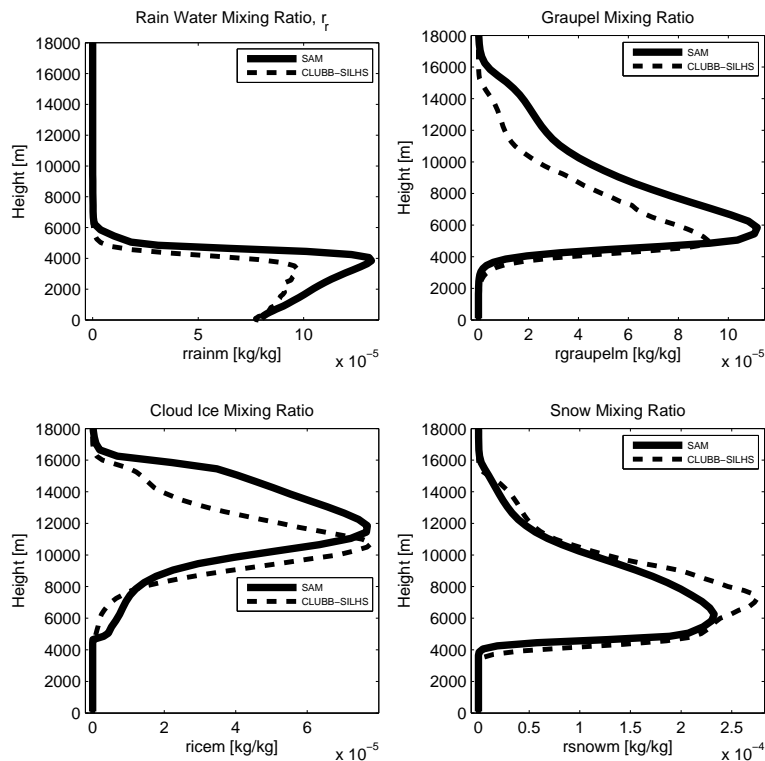


Figure 3. Profiles of rain water mixing ratio (upper left), cloud ice mixing ratio (upper right), snow mixing ratio (lower left), and graupel mixing ratio (lower right) from the TWP-ICE deep convective simulation, averaged over the same time period as Fig. 2 (minutes 6000–8000). CLUBB-SILHS hydrometeor profiles match well with those simulated in SAM.

Parameterizing deep convection

R. L. Storer et al.

Title Page

Abstract

Introduction

Conclusions

References

Tables

Figures

I ◀

▶ I

◀

▶

Back

Close

Full Screen / Esc

Printer-friendly Version

Interactive Discussion

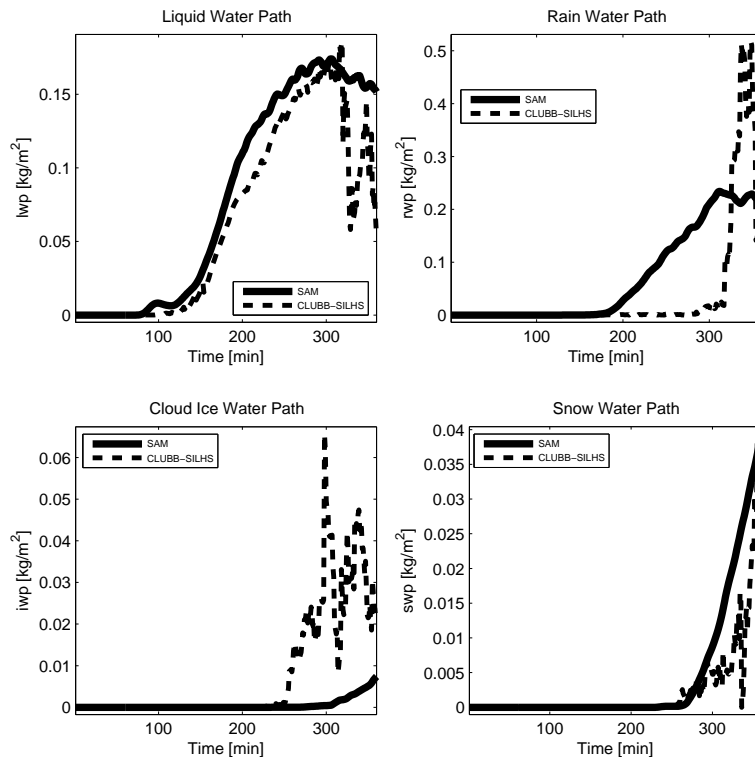


Figure 4. Time series of liquid water path (upper left), rain water path (upper right), ice water path (lower left), and snow water path (lower right) from the LBA deep convective simulation. Rain forms too late in the CLUBB-SILHS simulation, as there is an excess of ice that is not growing fast enough to form precipitation sized particles; however the timing and magnitude of liquid water path is simulated adequately.

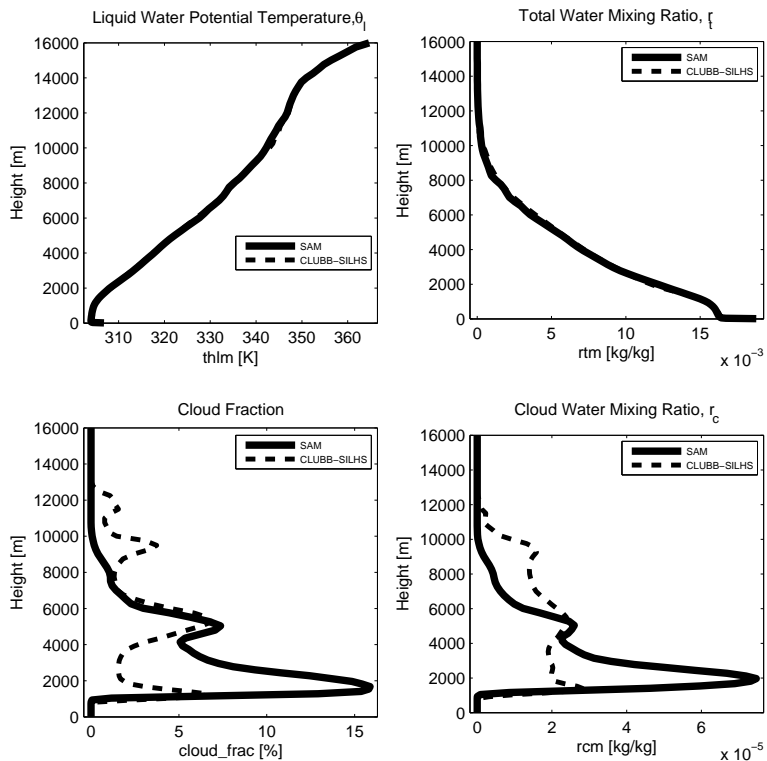


Figure 5. Profiles of liquid water potential temperature (θ_l) (upper left), total water mixing ratio (r_t) (vapor + liquid) (upper right), cloud fraction (lower left), and cloud water mixing ratio (lower right) from the LBA deep convective simulation. Profiles are averaged over the last hour of the simulation (minutes 301–360). The CLUBB-SILHS simulation matches the CRM simulation well, aside from a lack of cloud in lower levels.

Parameterizing deep convection

R. L. Storer et al.

Title Page

Abstract Introduction

Conclusions References

Tables Figures

◀ ▶

◀ ▶

Back Close

Full Screen / Esc

Printer-friendly Version

Interactive Discussion



Parameterizing deep convection

R. L. Storer et al.

Title Page

Abstract

Introduction

Conclusions

References

Tables

Figures

◀

▶

◀

▶

Back

Close

Full Screen / Esc

Printer-friendly Version

Interactive Discussion

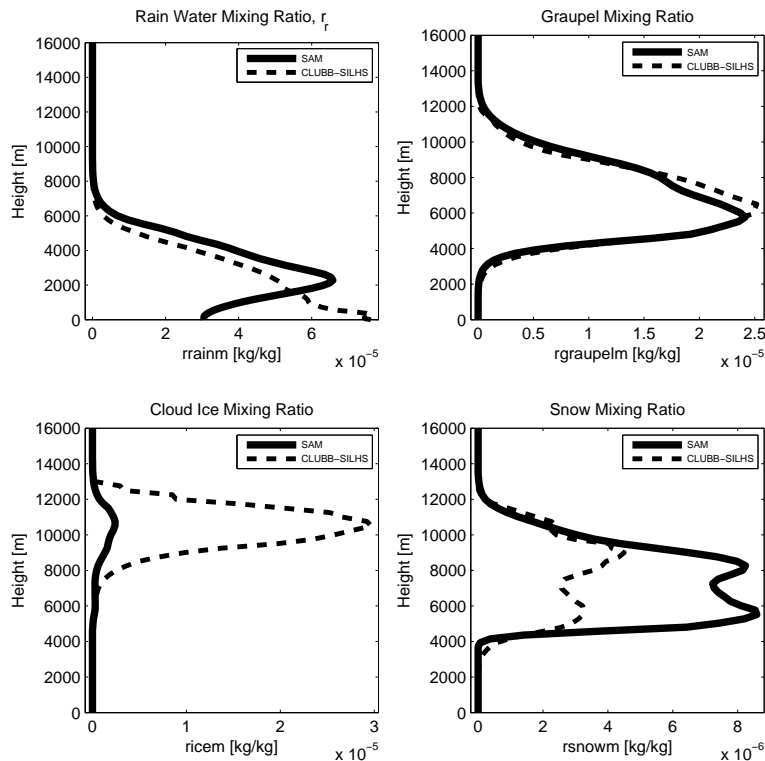


Figure 6. Profiles of rain water mixing ratio (upper left), cloud ice mixing ratio (upper right), snow mixing ratio (lower left), and graupel mixing ratio (lower right) from the LBA deep convective simulation, averaged over the same time period as Fig. 5 (minutes 301–360). Profiles are consistent with what was seen in Fig. 4.

Parameterizing deep convection

R. L. Storer et al.

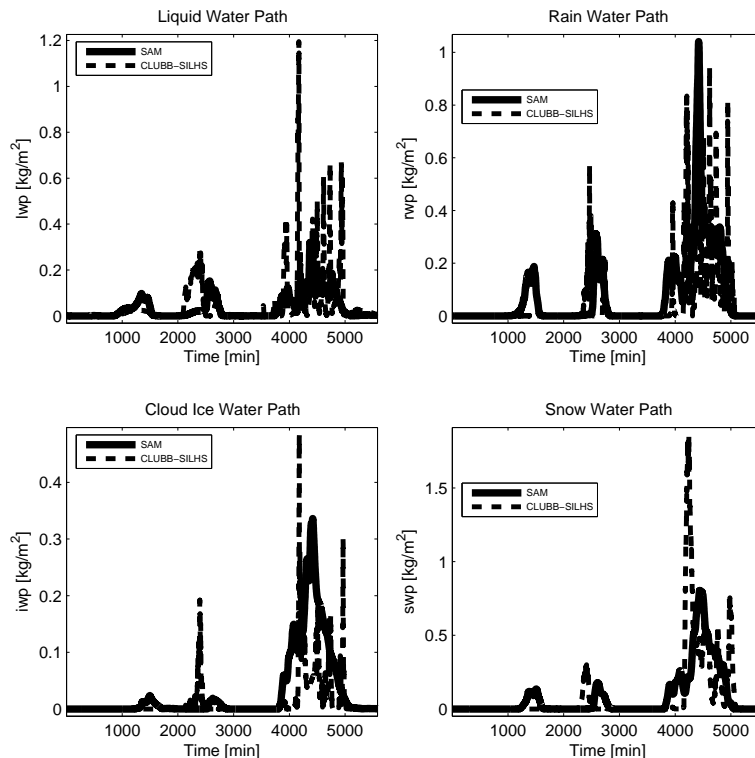


Figure 7. Time series of liquid water path (upper left), rain water path (upper right), ice water path (lower left), and snow water path (lower right) from the ARM97 deep convective simulation. CLUBB-SILHS's simulation of the first event produces cloud liquid water but no precipitation. However, CLUBB-SILHS's simulation of the other two events match SAM well in timing and magnitude.

[Title Page](#)[Abstract](#)[Introduction](#)[Conclusions](#)[References](#)[Tables](#)[Figures](#)[◀](#)[▶](#)[◀](#)[▶](#)[Back](#)[Close](#)[Full Screen / Esc](#)[Printer-friendly Version](#)[Interactive Discussion](#)

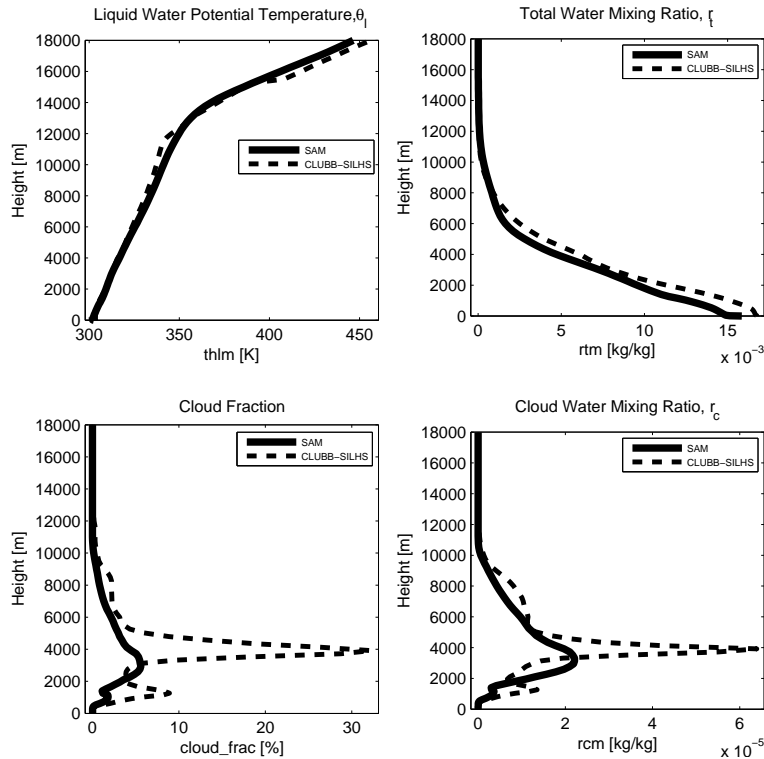


Figure 8. Profiles of liquid water potential temperature (upper left), total water mixing ratio (vapor + liquid) (upper right), cloud fraction (lower left), and cloud water mixing ratio (lower right) from the ARM97 deep convective simulation. Profiles are averaged over the third convective event (minutes 4321–5580). CLUBB-SILHS is slightly too cool in the upper troposphere and too moist in the lower troposphere; cloud fraction is too large.

Parameterizing deep convection

R. L. Storer et al.

Title Page

Abstract

Introduction

Conclusions

References

Tables

Figures

◀

▶

◀

▶

Back

Close

Full Screen / Esc

Printer-friendly Version

Interactive Discussion



Parameterizing deep convection

R. L. Storer et al.

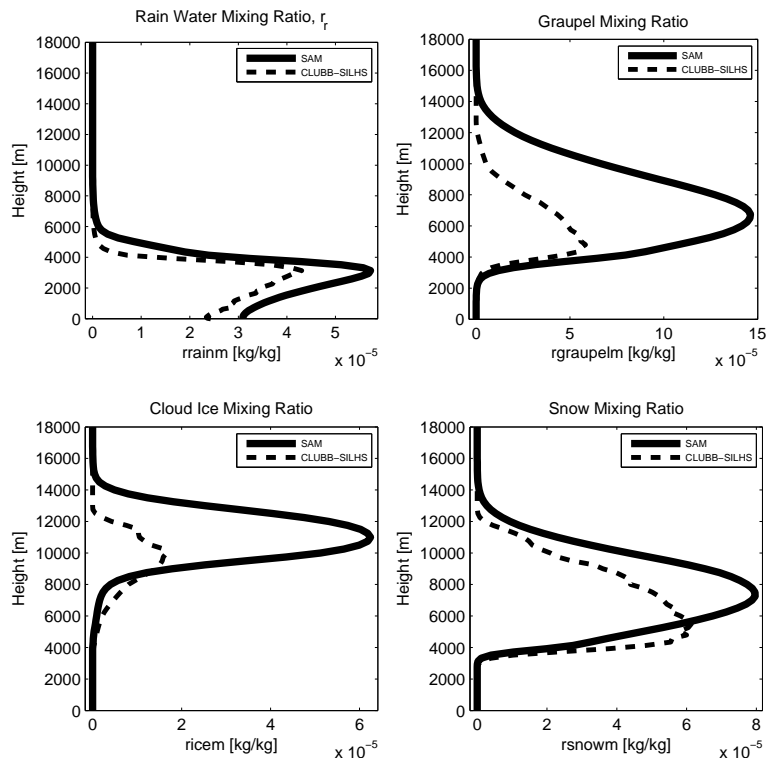


Figure 9. Profiles of rain water mixing ratio (upper left), cloud ice mixing ratio (upper right), snow mixing ratio (lower left), and graupel mixing ratio (lower right) from the ARM97 deep convective simulation, average over the same time as Fig. 8 (minutes 4321–5580). The hydrometeor profiles match the CRM fairly well, though the ice hydrometeors are too few and do not reach high enough in the clouds.

Title Page

Abstract

Introduction

Conclusions

References

Tables

Figures

◀

▶

◀

▶

Back

Close

Full Screen / Esc

Printer-friendly Version

Interactive Discussion



Parameterizing deep convection

R. L. Storer et al.

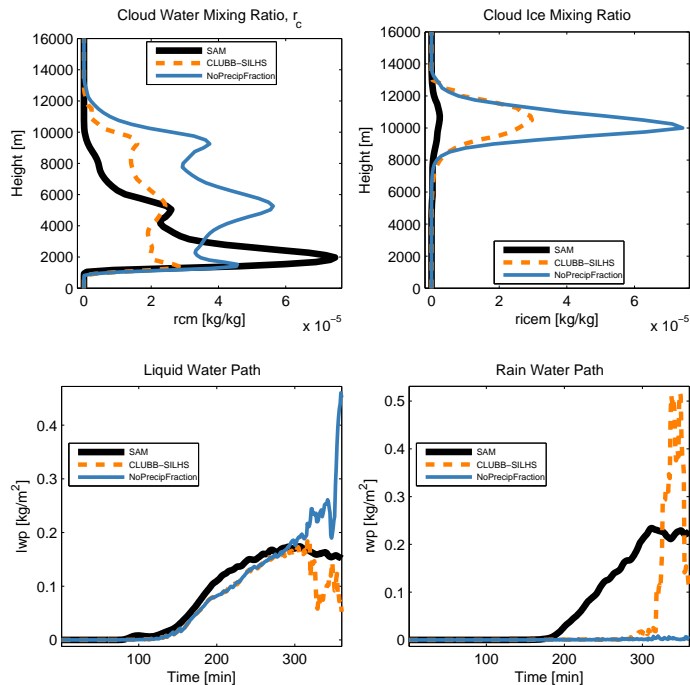


Figure 10. LBA simulations showing the effect of including the new precipitation fraction. The thick black line is the SAM CRM simulation, the orange dashed line is the CLUBB-SILHS (default) simulation presented in Sect. 3.2, which includes non-zero precipitation fraction, and the blue line is CLUBB-SILHS with the same configuration as in the orange line, but with the option for the precipitation fraction set to false. Above are profiles of cloud water mixing ratio (left) and cloud ice mixing ratio (right), averaged over the last hour of the simulation (minutes 301–360). Below are time series of liquid water path (left) and rain water path (right). Non-zero precipitation fraction is important for LBA, because it increases precipitation efficiency, allowing more rain to leave the atmosphere, thereby removing excess cloud liquid water aloft and reducing excessive ice formation and growth.

Parameterizing deep convection

R. L. Storer et al.

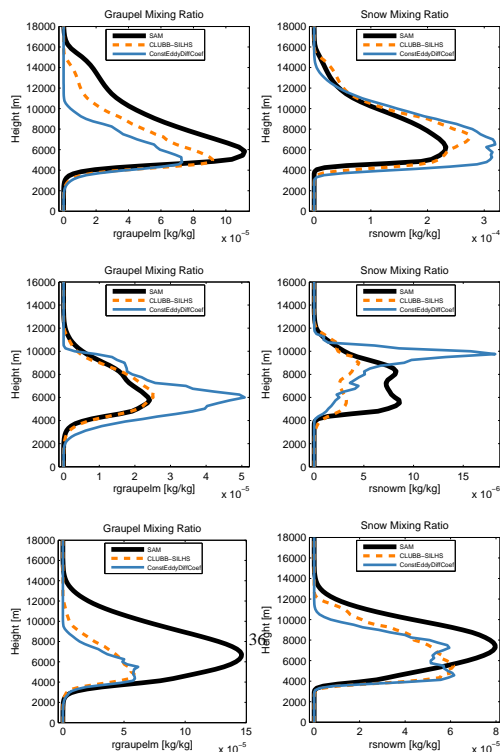


Figure 11. TWP-ICE (above), LBA (middle), and ARM97 (below) simulations showing the effects of boosting eddy diffusivity for convective cases. For each case, graupel mixing ratio is shown on the left and snow mixing ratio on the right. The thick black line is the SAM CRM simulation, the orange dashed line is the CLUBB-SILHS simulation presented earlier in Sect. 3, and the blue line is CLUBB-SILHS with the same configuration as in the orange line, but without the new diffusivity calculation. The new formulation for eddy diffusivity smooths the hydrometeor profiles and transports hydrometeors farther aloft.

Title Page

Abstract

Introduction

Conclusions

References

Tables

Figures

◀

▶

◀

▶

Back

Close

Full Screen / Esc

Printer-friendly Version

Interactive Discussion



Parameterizing deep convection

R. L. Storer et al.

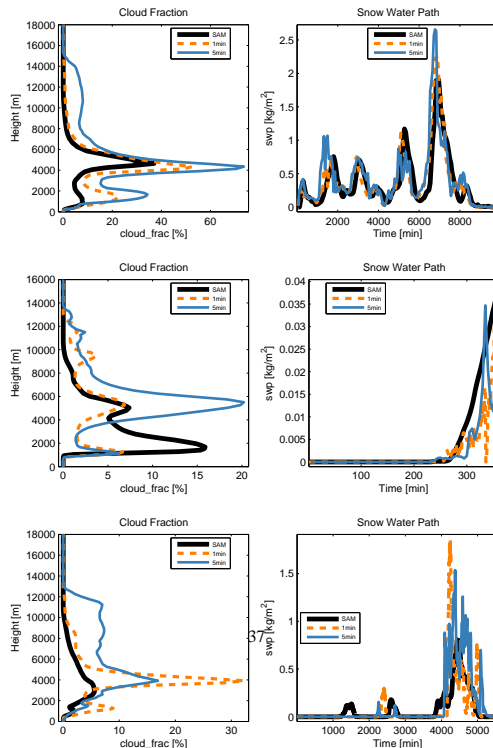


Figure 12. CLUBB-SILHS simulations of TWP-ICE (above), LBA (middle), and ARM97 (below) showing sensitivity of simulations to the time step. For each case, cloud fraction is shown on the left and a time series of snow water path is shown on the right. The thick black line is the SAM CRM simulation, the orange dashed line is the (default) CLUBB-SILHS simulation presented earlier in Sect. 3, and the blue line is CLUBB-SILHS with the same configuration as in the orange line, but using a 5 min time step, rather than 1 min. With an increased time step, the CLUBB-SILHS simulations are too convectively active; however, the simulations are still reasonable when compared to the SAM CRM simulations.

Title Page

Abstract

Introduction

Conclusions

References

Tables

Figures

◀

▶

◀

▶

Back

Close

Full Screen / Esc

Printer-friendly Version

Interactive Discussion



Parameterizing deep convection

R. L. Storer et al.

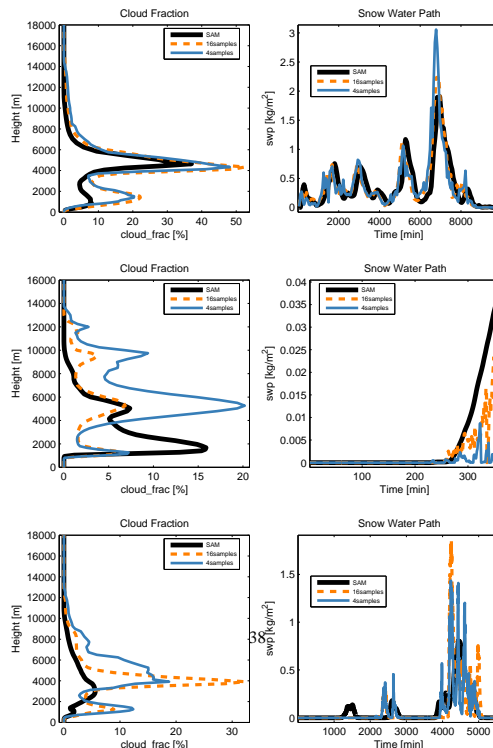


Figure 13. CLUBB-SILHS simulations of TWP-ICE (above), LBA (middle), and ARM97 (below) showing sensitivity of simulations to the number of subcolumns utilized in SILHS. For each case, cloud fraction is shown on the left and a time series of snow water path is shown on the right. The thick black line is the SAM CRM simulation, the orange dashed line is the CLUBB-SILHS simulation presented earlier in Sect. 3, and the blue line is CLUBB-SILHS with the same configuration as in the orange line, but using only 4 subcolumns for SILHS, rather than 16. Results are degraded only slightly with a reduced number of subcolumns, except in the LBA case, where too much cloud forms aloft.

Title Page

Abstract

Introduction

Conclusions

References

Tables

Figures

◀

▶

◀

▶

Back

Close

Full Screen / Esc

Printer-friendly Version

Interactive Discussion



Parameterizing deep convection

R. L. Storer et al.

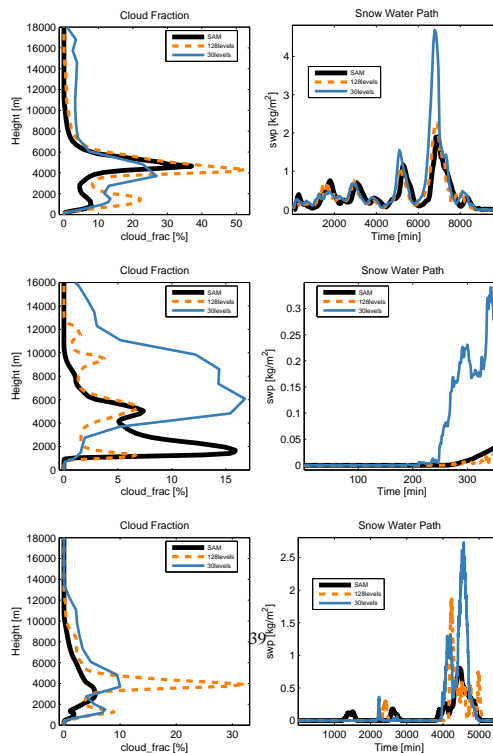


Figure 14. CLUBB-SILHS simulations of TWP-ICE (above), LBA (middle), and ARM97 (below) showing sensitivity of simulations to the number of vertical grid levels. For each case, cloud fraction is shown on the left and a time series of snow water path is shown on the right. The thick black line is the SAM CRM simulation, the orange dashed line is the (default) CLUBB-SILHS simulation presented in Sect. 3, and the blue line is CLUBB-SILHS with the same configuration as in the orange line, but using a 30-level vertical grid, rather than a 128-level grid. The CLUBB-SILHS simulations with decreased vertical resolution contain too much condensate, which is particularly apparent in the LBA case.

Title Page

Abstract

Introduction

Conclusions

References

Tables

Figures

◀

▶

◀

▶

Back

Close

Full Screen / Esc

Printer-friendly Version

Interactive Discussion



Parameterizing deep convection

R. L. Storer et al.

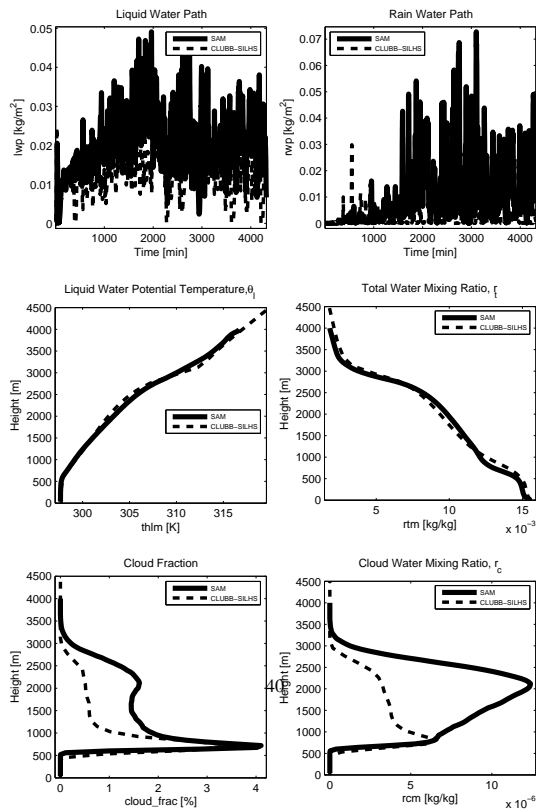


Figure 15. Results from the RICO simulation of shallow cumulus clouds. Above are time series of liquid water path (upper left) and rain water path (upper right). Below are mean profiles of liquid water potential temperature (middle left), total water mixing ratio (middle right), cloud fraction (lower left), and cloud water mixing ratio (lower right). Profiles are averaged over the last 2 h of the simulation (minutes 4301–4320). The CLUBB-SILHS simulation looks comparable to SAM, though there is too little cloud water produced.

Parameterizing deep convection

R. L. Storer et al.

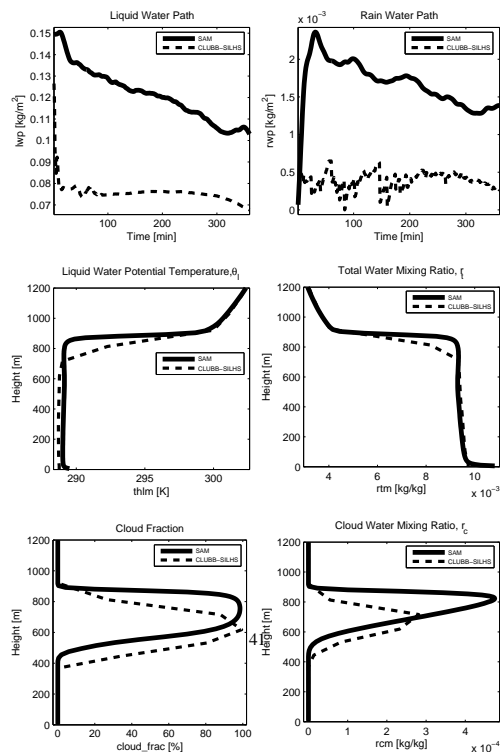


Figure 16. Results from the DYCOMS-II RF02 simulation of stratocumulus clouds. Above are time series of liquid water path (upper left) and rain water path (upper right). Below are mean profiles of liquid water potential temperature (middle left), total water mixing ratio (middle right), cloud fraction (lower left), and cloud water mixing ratio (lower right). Profiles are averaged over the last hour of the simulation (minutes 301–360). CLUBB-SILHS does a reasonable job of simulating these shallow stratocumulus clouds, though the amount of liquid is too low, which is related to the coarse vertical grid spacing.

Title Page

Abstract

Introduction

Conclusions

References

Tables

Figures

◀

▶

◀

▶

Back

Close

Full Screen / Esc

Printer-friendly Version

Interactive Discussion

