

Manuscript prepared for Geosci. Model Dev. Discuss.
with version 2014/09/16 7.15 Copernicus papers of the \LaTeX class copernicus.cls.
Date: 11 January 2015

Improved routines to model the ocean carbonate system: mocsy 2.0

J. C. Orr¹ and J.-M. Epitalon^{1,*}

¹LSCE/IPSL, Laboratoire des Sciences du Climat et de l'Environnement,
CEA-CNRS-UVSQ, France

*now at: Geoscientific Programming Services, Fanjeaux, France

Correspondence to: J. C. Orr (james.orr@lsce.ipsl.fr)

Abstract

Modelers compute ocean carbonate chemistry often based on code from the Ocean Carbon Cycle Model Intercomparison Project (OCMIP), last revised in 2005. Here we offer improved publicly available Fortran 95 routines to model the ocean carbonate system (mocsy 2.0). Both codes take as input dissolved inorganic carbon C_T and total alkalinity A_T , tracers that are conservative with respect to mixing and changes in temperature and salinity. Both use the same thermodynamic equilibria to compute surface-ocean $p\text{CO}_2$ and simulate air-sea CO_2 fluxes, but mocsy 2.0 uses a faster and safer algorithm (SolveSAPHE) to solve the alkalinity-pH equation, applicable even under extreme conditions. The OCMIP code computes only surface $p\text{CO}_2$, while mocsy computes all other carbonate system variables throughout the water column. It also avoids three common model approximations: that density is constant, that modeled potential temperature is equal to in situ temperature, and that depth is equal to pressure. Errors from these approximations grow with depth, e.g., reaching 3% or more for $p\text{CO}_2$, H^+ , and Ω_A at 5000 m. The mocsy package uses the equilibrium constants recommended for best practices. It also offers two new options: (1) a recent reassessed total boron concentration B_T that is 4% larger and (2) new K_1 and K_2 formulations designed to include low-salinity waters. Although these options enhance surface $p\text{CO}_2$ by up to $8 \mu\text{atm}$, individually, they should be avoided until (1) best-practice equations for K_1 and K_2 are reevaluated with the new B_T and (2) formulations of K_1 and K_2 for low salinities are adjusted to be consistent among pH scales. The common modeling practice of neglecting alkalinity contributions from inorganic P and Si leads to substantial biases that could easily be avoided. With standard options for best practices, mocsy agrees with results from the CO2SYS package within 0.005% for the three inorganic carbon species (concentrations differ by less than $0.01 \mu\text{mol kg}^{-1}$). Yet mocsy's computed subsurface $f\text{CO}_2$ and $p\text{CO}_2$ are many times larger than those from other packages, because it includes pressure corrections for K_0 and the fugacity coefficient.

1 Introduction

To compute air–sea CO_2 fluxes, ocean carbon cycle models compute the partial pressure of carbon dioxide ($p\text{CO}_2$) from two passive tracers, namely dissolved inorganic carbon C_T and total alkalinity A_T . In many models, that thermodynamic calculation is based on documented code from the Ocean Carbon Cycle Model Intercomparison Project (OCMIP), which is publicly available at <http://ocmip5.ipsl.jussieu.fr/OCMIP/>. Although modified versions of that code are used widely (e.g., Müller et al., 2008; Doney et al., 2006; Aumont and Bopp, 2006), it has not been updated since 2005. Meanwhile, there have been developments in recommended community standards for equilibrium constants (Dickson et al., 2007; Dickson, 2010).

Models require computationally efficient routines that are compatible with other model components, typically written in Fortran. Hence, model simulations are not made with other public software packages used widely to compute remaining carbonate system variables from any input pair, given corresponding in situ temperature, salinity, pressure, as well as concentrations of total dissolved inorganic phosphorus P_T and total dissolved inorganic silicon Si_T (Dickson et al., 2007). Models also differ because they typically carry potential temperature θ , use concentration units of mol m^{-3} , and are referenced to depth (m); conversely, equations for carbonate system thermodynamics require in situ temperature T , concentrations in mol kg^{-3} , and in situ pressure. Unit conversion is straightforward, but for simplicity modelers often make three approximations: (1) that θ is equivalent to T , (2) that ocean density is constant (e.g., 1028 kg m^{-3}), and (3) that depth (m) is equivalent to in situ pressure (dbar).

Errors associated with these simplifications are considered to be negligible, while the reasons behind them are largely historical. Most studies with ocean carbon cycle models have focused on large-scale patterns of air–sea CO_2 fluxes and related near-surface changes in the open ocean. More recently, with growing concern for ocean acidification (Caldeira and Wickett, 2003; Orr et al., 2005), attention has also turned to the deep ocean, the high latitudes, and local impacts in the coastal zone. Errors associated with the three approxi-

mations will be larger at depth, where θ diverges from T , where densities are greater than average surface values, and where there are larger absolute differences between pressure and depth. One may also question use of the constant density approximation in waters affected by excess evaporation (e.g., in the equatorial Pacific, Arabian Sea, and Mediterranean Sea) or large freshwater input (e.g., in the Arctic and coastal zones with heavy river influence).

To fill these gaps, we provide here an improved set of routines to model the ocean carbonate system (mocsy 2.0). This new package uses the classic approach, taking simulated A_T and C_T and computing all other carbonate system variables, while adding refinements. Relative to its precursor (OCMIP model code), mocsy offers several ameliorations: (1) it no longer makes the three approximations mentioned above, (2) it computes all carbonate system variables, not only $p\text{CO}_2$ and pH, (3) it provides these variables at all model levels, not only at the surface, and (4) it uses, as a default, the constants and the pH scale recommended for best practices (Dickson et al., 2007). All constants except K_0 (the CO_2 solubility) are corrected for pressure effects (Millero, 1995) with modified coefficients adopted from CO2SYS (Lewis and Wallace, 1998); both K_0 and the fugacity coefficient are corrected for pressure effects following Weiss (1974). Options are also provided to replace formulations for K_1 and K_2 and for total boron that are recommended for best practices (Dickson et al., 2007) with more recent formulations, choices that will be shown to affect results significantly.

2 Methods

2.1 Code description

2.1.1 Basics

The ocean carbonate system is well constrained. Any pair of carbonate system variables can be used to compute all others. Because only two carbonate system variables, C_T and A_T , are carried as passive tracers by all ocean carbon models, mocsy offers only that input

pair. Thus it is unlike other public packages designed largely for observationalists. To calculate the remaining carbonate system variables, one only needs to provide additional input for temperature, salinity, P_T , and Si_T as well as pressure or depth. A precursor to mocsy was developed in 2004 and used to project future ocean acidification from simulated C_T and A_T in the OCMIP2 models (Orr et al., 2005). That precursor code was never released publicly and should not be confused with the preexisting OCMIP2 or OCMIP3 code, which only computes surface pCO_2 . Its development began by combining the Fortran code for equilibrium constants from OCMIP2 and an iterative algorithm to solve for pH (Maier-Reimer, 1993; Aumont and Bopp, 2006). The precursor code was then modified to compute all carbonate system variables throughout the water column. Thus it included pressure corrections for equilibrium constants (Millero, 1995) with pressure-correction coefficients (some now known to be erroneous) taken from version 0.95 of seacarb (Proye and Gattuso, 2003; Lavigne and Gattuso, 2011), which itself adopted code from csys (Zeebe and Wolf-Gladrow, 2001). From the seacarb code, the precursor code also included the analytical formula for the Revelle factor from Frankignoulle (1994). Our feedback from this early development led to bug corrections that were later implemented in seacarb.

Since 2005, this precursor code has continued to be improved. The first public version was denoted as mocsy 1.0 (Orr and Epitalon, 2014). Here along with a revised version of that Discussion paper, we provide an improved version of the code, mocsy 2.0. The equilibrium constants and pH scale adopted in mocsy are those recommended by the Guide to Best Practices for Ocean CO_2 Measurements (Dickson et al., 2007). The equilibrium constants are generally on the total pH scale. There are four exceptions: the CO_2 solubility K_0 , K_S , the solubility product for aragonite K_A , and the analogous solubility product for calcite K_C (Mucci, 1983). By definition, K_0 , K_A , and K_C are independent of the pH scale: they do not involve $[H^+]$. Although K_S includes $[H^+]$, it is maintained on the free scale, as needed to convert between the free and total scales. Conversely, the equilibrium constant that is used to convert between total and seawater scales, K_F , is maintained on the total scale along with all other constants.

For its basic calculations, mocsy adopts the recommendations of Dickson et al. (2007). These include (1) the Weiss (1974) formulation describing the solubility of CO_2 in seawater (K_0); (2) the Lueker et al. (2000) formulations for first and second dissociation constants of carbonic acid (K_1 and K_2), refits of measurements from Mehrbach et al. (1973) on the NBS scale to the total pH scale; (3) the Millero (1995) formulations for equilibrium constants of boric acid (K_B), phosphoric acid (K_{1P} , K_{2P} , K_{3P}), silicic acid (K_{Si}), and water (K_W), which mocsy converts from the seawater scale to the total scale; (4) the Dickson (1990) formulation for the equilibrium constant for the dissociation of bisulfate (K_S) on the free scale (see above); (5) the Perez and Fraga (1987) formulation for the equilibrium constant for hydrogen fluoride HF (K_F) on the total scale; and (6) the Mucci (1983) formulations for the CaCO_3 solubility products for aragonite and calcite (K_A and K_C). These equilibrium constants use concentrations, not activities. All of them except for K_0 are further adjusted for pressure using the approach of Millero (1995), with corrected coefficients from Lewis and Wallace (1998) (see Orr et al., 2014, Table 7). Constant ratios relative to salinity are used to compute concentrations of total inorganic boron (Uppström, 1974), fluoride (Riley, 1965), sulfur (Morris and Riley, 1966), and calcium (Riley and Tongudai, 1967). The product of the Ca^{2+} and CO_3^{2-} concentrations divided by the apparent solubility product (either K_A or K_C) yields the saturation state (i.e., for aragonite Ω_A or for calcite Ω_C , respectively).

2.1.2 Solver of the total alkalinity-pH equation

In mocsy 2.0, to solve the total alkalinity-pH equation, we have replaced the classic fixed-point iterative carbonate alkalinity scheme (ICAC) in mocsy 1.0 with a new, universally convergent algorithm from Munhoven (2013). We now call the cubic initialization routine followed by the standard safe-guarded solver routine `solve_at_general`, both from Munhoven's SolveSAPHE package v1.0.1. Our tests using typical open-ocean conditions indicate that results from both are identical to at least the sixth digit after the decimal in terms of pH, but that SolveSAPHE is about 5 times faster than our former ICAC routine.

Moreover, the SolveSAPHE routines allow mocsy 2.0 to avoid any convergence problem under extreme conditions. The ICAC methods do not always converge, for example

under low C_T when $A_T/C_T > 1$ (Munhoven, 2013, Figure 3c). Our experience is that non-convergence may occur in high-resolution, global biogeochemical models under present-day conditions, because local effects from freshwater river input are heightened. An example comes from recent test simulations with the ICAC scheme embedded in 2° , 0.5° , and 0.25° versions of the NEMO-PISCES model at our laboratory. At the highest resolution, the ICAC scheme generates negative $[H^+]$ in the model's Ob estuary where simulated A_T and C_T are both very low as are salinities. We expect that these negative $[H^+]$ will disappear once the SolveSAPHE algorithms are implemented in the model.

For use with mocsy 2.0, we made minor modification to the SolveSAPHE routines (1) to use mocsy's equilibrium constants and (2) to remove arguments and equations for NH_4^+ and H_2S acid systems.

2.1.3 From aqueous CO_2 to pCO_2

In mocsy, we use K_0 from Weiss (1974) to compute fCO_2 from CO_2^* and the fugacity coefficient C_f (Weiss, 1974; Dickson and Goyet, 1994; Dickson et al., 2007) to compute pCO_2 from fCO_2 :

$$[CO_2^*] = K_0 fCO_2 = K_0 C_f pCO_2. \quad (1)$$

For this calculation of oceanic pCO_2 , mocsy does not use the combined coefficient F from Weiss and Price (1980), where

$$F = K_0 C_f (1 - pH_2O), \quad (2)$$

because it includes a wet-to-dry air conversion (term in parentheses), which is inappropriate for the conversions in Eq. 1. Rather, that combined term is commonly used when converting between atmospheric pCO_2 and xCO_2 . Although those atmospheric conversions are now also offered with new functions in mocsy 2.0, we still do not use F in order to make calculations in a stepwise fashion and to avoid potential confusion.

The mocsy 2.0 package also differs substantially from other packages because it adjusts for effects of subsurface pressure on K_0 as well as C_f . All packages compared by Orr et al.

(2014) compute K_0 with the same standard equation (Weiss, 1974, Eq. 12), but none of them make the exponential pressure correction (Weiss, 1974, Eq. 5):

$$[\text{CO}_2^*] = K_0 f\text{CO}_2 \exp[(1 - P)\bar{v}_{\text{CO}_2}/RT], \quad (3)$$

where P is the total pressure (atmospheric + hydrostatic, both in units of atm), \bar{v}_{CO_2} is the partial molal volume of CO_2 ($32.3 \text{ cm}^3 \text{ mol}^{-1}$), R is the gas constant ($82.05736 \text{ cm}^3 \text{ atm mol}^{-1} \text{ K}^{-1}$), and T is the absolute temperature (K). Thus the computed $f\text{CO}_2$ refers only to potential values considering the total pressure as that at the surface. Weiss (1974) indicated that that simplification is adequate down to about 100 m, below which the pressure correction is not negligible and should be included. In mocsy 2.0, we account for the pressure correction term.

Likewise the effects of subsurface pressure on the fugacity coefficient C_f were not considered in the public packages compared by Orr et al. (2014), including mocsy 1.0 (Orr and Epitalon, 2014). All packages considered that total pressure was the same as atmospheric pressure, always equal to 1 atm. Conversely, mocsy 2.0 also accounts for subsurface pressure effects on C_f (Weiss, 1974, Eq. 9):

$$f\text{CO}_2 = p\text{CO}_2 C_f = p\text{CO}_2 \exp[(B + 2x_2^2 \delta_{12}) P/RT], \quad (4)$$

where B is the virial coefficient of CO_2 (Weiss, 1974, Eq. 6), x_2 is the sum of the mole fractions of all remaining gases ($1 - x\text{CO}_2$, when $x\text{CO}_2 \ll 1$), and $\delta_{12} = 57.7 - 0.118T$. Once again, P is the total pressure (atmospheric + hydrostatic) in atm and R and T are as described for Eq. 3.

In Eqs. 3 and 4, other public packages have used atmospheric pressure for P , typically fixed at 1 atm. Their computed subsurface $f\text{CO}_2$ and $p\text{CO}_2$ may be considered as pseudo-potential values that a water parcel would have if brought back to the surface. We use the term pseudo, because that approach does not correct for the effect of pressure on temperature. Hence we offer a third approach to compute the true potential $f\text{CO}_2$ and $p\text{CO}_2$ also at surface pressure but using the potential temperature θ in place of T in Eqs. 3 and 4. That is, this true potential $f\text{CO}_2$ and $p\text{CO}_2$ also considers that subsurface water is

brought adiabatically back to the surface. In mocsy 2.0, all three approaches are available, but the default is to compute $f\text{CO}_2$ and $p\text{CO}_2$ with the first approach, at in situ temperature and total pressure.

The effects of these pressure corrections on K_0 and C_f are shown in terms of their multiplicative effect on $f\text{CO}_2$ and $p\text{CO}_2$. For K_0 , the effect is shown as components of the exponential term in Eq. 3 (Fig. 1, left). For C_f , it is shown as the ratio between the exponential term in Eq. 4 where P is total pressure over the same term with P equal to atmospheric pressure (Fig. 1, right). At 100 m, factors already reach 1.014 for $f\text{CO}_2$ and 1.05 for $p\text{CO}_2$. At 5000 m, the total multiplicative effect reaches more than a factor of 2 for $f\text{CO}_2$ and 20 for $p\text{CO}_2$. The effect of pressure on temperature (T) is a small effect compared with the total correction ($T + P$). Hence the second and third approaches above provide similar results. Because mocsy 2.0's default is to include these large subsurface pressure corrections, its subsurface $f\text{CO}_2$ and $p\text{CO}_2$ will be much larger than those from other packages (Orr et al., 2014). Conversely, calculations of other variables will not be affected by pressure adjustments of K_0 and C_f .

2.1.4 Revelle factor

Another new feature in mocsy 2.0 is that it accounts for the effects of P_T and Si_T on the Revelle factor R_f .

$$\begin{aligned}
 R_f &= \frac{\partial p\text{CO}_2 / p\text{CO}_2}{\partial C_T / C_T} \\
 &= \frac{\partial p\text{CO}_2}{\partial C_T} \left(\frac{C_T}{p\text{CO}_2} \right)
 \end{aligned}
 \tag{5}$$

To do so, mocsy 2.0 replaces the analytical formula for R_f from Frankignoulle (1994) that was used in mocsy 1.0 with a numerical centered-finite-difference solution to compute the derivative. This second-order accurate numerical approach is like that used in CO2SYS, with two differences. The most significant is that CO2SYS uses $f\text{CO}_2$ in place of $p\text{CO}_2$. Secondly, in CO2SYS the step size h for the numerical approximation of the derivative

$(df/dx = (f(x_0 + h) - f(x_0 - h))/2h$, where x is C_T and $f(x)$ is $p\text{CO}_2$) is ten times larger than ours ($h = 0.1 \mu\text{mol kg}^{-1}$), an optimal value that produced the minimum difference between the numerical and analytical solutions, when nutrient concentrations are set to zero. However, both step sizes yield identical computed R_f values up to the fourth decimal place.

5 2.2 Options

Since the publication of the last best practices guide (Dickson et al., 2007), there have been developments that merit close attention given their potential impacts on computed carbonate chemistry variables. First, Lee et al. (2010) estimate that the total boron concentration in the ocean, i.e., its linear relationship with salinity, is 4 % greater than estimated previously (Uppström, 1974). Lee et al. (2010) used a more precise measurement technique on more samples ($n = 139$) collected from a wider geographic distribution than did Uppström (1974) whose total boron : salinity ratio is based on 20 samples from the deep Pacific.

Second for K_1 and K_2 , Millero (2010) combined the same set of measurements used by Lueker et al. (2000) from Mehrbach et al. (1973) along with his own (Millero et al., 2006) to fit new formulations that are applicable over larger ranges of salinity (1 to 50) and temperature (0 to 50 °C) than are those recommended for best practices (Lueker et al., 2000). The latter are intended to be used only when $19 < S < 43$ and $2 < T < 35^\circ\text{C}$. Salinities and temperatures below these thresholds do occur even in coarse-resolution global models in areas such as the Arctic, which routinely experiences subzero temperatures and intense freshwater input from rivers as well as land- and sea-ice melt. Low salinities near rivers are also common in regional models and will become more prevalent in global models as resolution increases. To model such conditions properly, we may need to go beyond the best-practices recommendation (Dickson et al., 2007). Thus in mocsy, we have implemented options for the user to choose to use the newer formulations mentioned above for K_1 , K_2 , and total boron in place of those recommended for best practices. Likewise for K_F , we allow the user to choose either the Dickson and Riley (1979) formulation recommended by Dickson and Goyet (1994) or the Perez and Fraga (1987) formulation recommended by Dickson et al.

(2007), but which is intended to be limited to waters where $10 < S < 40$ (practical salinity scale) and $9 < T < 33$ °C.

2.3 Exceptions to best practices

The best-practice formulations for K_W , K_{1P} , K_{2P} , and K_{3P} proposed by Dickson et al. (2007) are those from Millero (1995) with 0.015 subtracted from the constant term as a simple means to convert from the seawater to the total hydrogen ion scale (Dickson and Goyet, 1994; Dickson et al., 2007, Chap. 5, footnote 5). In mocsy, we do not impose this constant correction, preferring instead to use the classic approach to convert equilibrium constants between the two pH scales (e.g., Millero, 2010, Eq. 6). That results in a pH-scale correction that varies with [HF]. The variable correction is also used in CO2SYS.

Dickson et al. (2007) do not discuss pressure corrections of equilibrium constants. Unlike in other public packages, mocsy 2.0 makes pressure adjustments for K_0 and the related C_f (Eqs. 3 and 4), thus affecting computed $f\text{CO}_2$ and $p\text{CO}_2$ (see Sect. 2.1.3). For the remaining equilibrium constants, mocsy follows the lead of CO2SYS using Millero's equations, quadratic functions of pressure and temperature (Millero, 1995, Eqs. 90–92) with corrections to associated coefficients from Lewis and Wallace (1998) as detailed elsewhere (Orr et al., 2014, Table 7).

To compute the Ca^{2+} concentration from salinity, mocsy 2.0 uses a Ca-to-chlorinity ratio of 0.02128 from Riley and Tongudai (1967) instead of the slightly different value of 0.02127 that appears in the best-practices guide (Dickson et al., 2007, chap.5, Table 2). The latter states it uses the ratio from the former reference.

2.4 Evaluation

There is no absolute reference for computed carbonate system variables. To validate mocsy, its computed variables were compared to those from CO2SYS-MATLAB (van Heuven et al., 2011) run with identical input data. Although both packages could in principle be wrong even if both agree, we compare mocsy to CO2SYS because the latter is the first public package

made available to compute these variables, it is used widely, and it was developed with great care (Lewis and Wallace, 1998). Moreover, it has served as a base for other public packages to build on. A companion manuscript further details the reasons for our arbitrarily choice of CO2SYS as the reference (Orr et al., 2014). The input data with which we compared the two packages includes A_T and C_T from the three-dimensional, global gridded data product on a $1^\circ \times 1^\circ$ grid known as GLODAP (Key et al., 2004). Other necessary input data on the same grid were taken from the 2009 World Ocean Atlas (WOA2009) gridded data product, which includes in situ temperature (Locarnini et al., 2010), salinity (Antonov et al., 2010), and concentrations of P_T and Si_T (Garcia et al., 2010).

3 Results

As a baseline reference for later evaluation and sensitivity tests, we present carbonate system variables computed with mocsy 2.0 from the gridded GLODAP-WOA2009 data. Magnitudes and patterns of the surface zonal-mean distributions (Fig. 2) are as expected based on previous studies Orr et al. (2005); Orr (2011). Corresponding global mean vertical profiles (Fig. 3) have not been detailed previously. Both fCO_2 and pCO_2 continue to increase with depth, particularly the latter, because of pressure corrections to K_0 and C_f , respectively. Conversely, the CO_2^* concentration increases from the surface to about 1000 m, where it reaches three times the surface level. Below, it declines slowly to values at 5000 m that are just over twice those at the surface. The CO_3^{2-} profile mirrors that for CO_2^* , as expected from the zonal mean distributions. Vertical distributions of the saturation states Ω_A and Ω_C generally follow the CO_3^{2-} profile but are influenced by pressure effects on K_A and K_C . The shape of the H^+ concentration profile is similar to that for CO_2^* but shows two maxima at 1000 and 5000 m, both at about twice the surface concentration. The Revelle factor also reaches a maximum at 1000 m, but it declines only slightly below, with values remaining at nearly double the surface level.

3.1 Evaluation

Our evaluation reveals the extent to which mocsy's variables computed from the GLODAP-WOA2009 data differ from those computed when the same data is used with the CO2SYS-MATLAB package. Relative differences remain within $\pm 0.005\%$ for computed concentrations of CO_2^* , HCO_3^- , CO_3^{2-} , and H^+ , both for surface zonal means (Fig. 4) and global average vertical profiles (Fig. 5). Corresponding absolute differences are within $0.01 \mu\text{mol kg}^{-1}$ for each of the three inorganic carbon species, and within $0.0002 \text{ nmol kg}^{-1}$ for H^+ . The latter translates into pH differences of less than 0.00002 between the two packages. Tighter agreement cannot be expected because CO2SYS computes pH with a Newton method that stops iterating once the change in pH from the previous iteration is less than 0.0001. The slight difference in H^+ between packages explains the slight offsets in the three inorganic carbon species, because both packages yield identical results for the computed K_1 and K_2 equilibrium constants (Orr et al., 2014).

Relative differences between packages are slightly larger for Ω_A and Ω_C , with a constant offset of 0.018% throughout the water column. Comparison of the source code of the two packages revealed that the offset is due to differences in the atomic weight of calcium: CO2SYS uses 40.087, whereas mocsy uses 40.078, the recommended value (Dickson et al., 2007, chap. 5, Table 1). Nonetheless, these relative differences remain small. They correspond with differences in computed saturation states of less than 0.001 unit between the two packages. Of similar magnitude are the relative differences for the Revelle factor R_f of about 0.02% at the surface. Relative differences in R_f grow to 0.2% at 5000 m, but the corresponding absolute differences remains less than 0.03 units. With the new numerical solution of R_f in mocsy, differences relative to CO2SYS are six times smaller than with the analytical formula used in mocsy 1.0.

For the two remaining computed variables, surface $f\text{CO}_2$ and $p\text{CO}_2$ both track CO_2^* in both packages. Hence differences between packages for these variables remain small (0.005%) at the surface. Yet discrepancies grow to extraordinary levels at greater depths. At 5000 m, mocsy's $f\text{CO}_2$ is twice as large as that in CO2SYS, while its $p\text{CO}_2$ reaches more

than twenty times more. The cause of these large differences are the pressure corrections to K_F and C_f in mocsy 2.0 (Eqs. 3 and 4) as shown in Fig. 1, which are not accounted for in CO2SYS.

3.2 Model approximations

5 Errors from all three model approximations increase with depth (Figs. 6). Maximum total errors reach 3% or more for $p\text{CO}_2$, H^+ , and Ω_A at 5000 m. Yet the causes differ. For $p\text{CO}_2$, the largest error comes from the pressure approximation, while errors from the other two approximations are smaller and nearly compensate one another. For Ω_A there is little compensation, while the error from the constant density approximation dominates; it alone reaches 3% at 5000 m. For H^+ , there is no compensation and errors from the temperature approximation dominate. The total relative error for computed $f\text{CO}_2$ in the deep ocean is about half that for $p\text{CO}_2$ because the error associated with the pressure approximation is more than four times smaller while errors from the other two approximations are similar. Total errors from the three approximations remain less than 1% even in the deep ocean for the three inorganic carbon species as well as for the Revelle factor.

15 Errors in Ω_A have somewhat similar patterns to those of CO_3^{2-} . Yet at 5000 m, the magnitude of the total relative error of Ω_A reaches 4%, more than five times greater than for CO_3^{2-} . That relative enhancement of the former over the latter is partly due to the sharp decline in Ω_A , e.g., below 1000 m, whereas CO_3^{2-} concentrations remain relatively stable (Fig. 3). The dominance of the pressure induced increase in K_A largely outweighs its sensitivity to temperature, unlike for CO_3^{2-} .

20 None of the three approximations is without error, but it is the constant density approximation which leads to the largest errors in most computed variables (except for $p\text{CO}_2$, H^+ , and $f\text{CO}_2$). Yet total absolute errors generally remain small, even at 5000 m, e.g., less than 0.6 $\mu\text{mol kg}^{-1}$ for the three inorganic carbon species, less than 0.02 for Ω_A , and less than 0.07 for R_f (Figs. 7). Conversely, at the same depth the absolute error in pH reaches 0.015 while for $p\text{CO}_2$ it reaches 350 μatm .

3.3 Options

The effects of the three options on computed variables differ by region and depth. The choice for the K_F option has virtually no effect on computed quantities and can be neglected. That is, K_F appears in the total alkalinity equation as detailed later, but its relative importance may be thought of simply in terms of pH, as it is used to convert between the seawater and total pH scales. The difference between the two scales is small (~ 0.01 units of pH), and the two formulations alter that very slightly. Practically then, computed carbonate system variables are insensitive to different formulations of K_F . More details about the sensitivity of computed variables to each of the constants can be found elsewhere (Orr et al., 2014, Table 9). Larger differences result from the choice of the two other new options, for total boron and for formulations for K_1 and K_2 .

The 4% increase in total boron with the new formulation from Lee et al. (2010) increases borate alkalinity A_B , e.g., by about 3% in typical surface waters. The latter increases less because $A_B = B_T / (1 + [H^+] / K_B)$ and $[H^+]$ also increases by 1%. Yet modeled total alkalinity A_T is unaffected, being an input variable (along with C_T). Because A_T is unchanged and A_B is higher, then modeled carbonate alkalinity A_C must be lower. This decline in A_C reduces surface CO_3^{2-} everywhere, from $-1.5 \mu\text{mol kg}^{-1}$ in the Southern Ocean to $-3 \mu\text{mol kg}^{-1}$ in the tropics (Fig. 8). The corresponding decline in surface Ω_A is between 0.02 to 0.04. Simultaneously, computed surface $p\text{CO}_2$ increases by 4 to 6 μatm and surface pH declines by 0.006 units. Yet the Revelle factor declines by 0.04, i.e., the buffer capacity increases. That decline can be understood by studying Eq. (5). The partial derivative on the right hand side increases by roughly 1% when the new boron formulation (Lee et al., 2010) is used in place of the standard (Uppström, 1974). However the adjacent concentration ratio (in parentheses) decreases by relatively more, about 1.4%. Hence R_f decreases because $p\text{CO}_2$ increases (C_T remains constant). In the deep ocean, the new total boron formulation leads to nearly uniform changes in pH of -0.005 ± 0.001 units, and in CO_3^{2-} of $-1 \pm 0.1 \mu\text{mol kg}^{-1}$. There is also an exponential increase in $p\text{CO}_2$ up to 110 μatm at 5000 m (Fig. 9). The latter represents a 1% increase in the baseline $p\text{CO}_2$ (Fig. 3).

The new option where the formulations of K_1 and K_2 from Millero (2010) are used instead of those from Lueker et al. (2000) yields changes that are less uniform and in some places larger than those from using the new option for B_T . Changes from the new option for K_1 and K_2 are larger in the Southern Ocean, i.e., $p\text{CO}_2$ increases by up to $+7 \mu\text{atm}$, corresponding to a 2% increase in CO_2^* , while pH declines by up to 0.006. In contrast, in the lowest latitudes corresponding changes in $p\text{CO}_2$ and CO_2^* are negligible. In the Southern Ocean, changes in $p\text{CO}_2$, CO_2^* , and pH from using the new K_1 and K_2 option reinforce those from the new B_T option. But in the same region, changes from the two options partly compensate one another for CO_3^{2-} and Ω_A , while they reinforce one another in the lower latitudes. Due to these regional differences in compensation, total absolute changes are largest in the Southern Ocean for $p\text{CO}_2$ ($+12 \mu\text{atm}$), CO_2^* ($+4\%$), pH (-0.012), and R_f (-0.30), whereas they are largest in the lower latitudes for CO_3^{2-} ($-3.5 \mu\text{mol kg}^{-1}$) and Ω_A (-0.06). With depth, mean absolute changes due to both options grow for $p\text{CO}_2$ and CO_2^* , change little for pH and R_f , and decline for CO_3^{2-} and Ω_A . These differences appear greatly affected by the structure of the baseline profiles (Fig. 3).

4 Discussion

Our focus has been on quantifying errors in computed variables from the three model approximations and in assessing how variables are affected by the three user options. A more general concern is how computed variables are affected by the frequent practice of neglecting nutrient concentrations in carbonate system calculations. In high-nutrient regions, the changes in computed variables due to phosphate and silicate alkalinity (Figs. 10 and 11) are similar in magnitude and have the same sign as do those from changing to the new formulation for total boron (Figs. 8 and 9). All three contribute to non-carbonate alkalinity and hence total alkalinity,

$$A_T = A_C + A_B + A_W + A_P + A_{\text{Si}} + A_O, \quad (6)$$

where

$$A_C = [\text{HCO}_3^-] + 2[\text{CO}_3^{2-}], \quad (7)$$

$$A_B = [\text{B}(\text{OH})_4^-], \quad (8)$$

$$A_W = [\text{OH}^-] - [\text{H}^+]_F - [\text{HSO}_4^-] - [\text{HF}], \quad (9)$$

$$A_P = [\text{HPO}_4^{2-}] + 2[\text{PO}_4^{3-}] - [\text{H}_3\text{PO}_4], \quad (10)$$

$$A_{\text{Si}} = [\text{SiO}(\text{OH})_3^-], \text{ and} \quad (11)$$

$$A_O = [\text{NH}_3] + [\text{HS}^-] + \dots \quad (12)$$

In brief, contributions on the right side of Eq. (6) come from components of carbonic acid, boric acid, water, phosphoric acid, silicic acid, and other species, respectively. The sum of last three terms in Eq. (9) are often represented simply as $[\text{H}^+]$, namely the hydrogen ion concentration on the seawater scale. Hence, water alkalinity A_W provides an indicator of how a given seawater sample differs from acid-base neutrality.

As an input variable, A_T is not affected by using a more simplified alkalinity equation, by neglecting nutrient concentrations, or by choosing a different formulation for total boron. Indeed, measured A_T is unaffected by any of our calculations. Yet A_C is affected, being computed by difference. As any of A_B , A_P , or A_{Si} increase, computed A_C must decrease. In the surface ocean, nutrient alkalinity ($A_P + A_{\text{Si}}$) substantially alters computed carbonate system variables where nutrient concentrations are largest, e.g., in the equatorial Pacific and in the high latitudes (poleward of 40°). The largest surface effects occur in the Southern Ocean where computed $p\text{CO}_2$ changes by $+6 \mu\text{atm}$, once nutrients are accounted for, which is six times more than estimated by Follows et al. (2006). At the same time, CO_3^{2-} changes by $-1.6 \mu\text{mol kg}^{-1}$ and pH by -0.007 (Fig. 10). Differences between some models may be larger in some regions, but that is far from a general rule. In the Southern Ocean, simulated air-sea fluxes of natural CO_2 often differ between models by only a tenth of a Pg C yr^{-1} , equivalent to less than $1 \mu\text{atm}$ in the air-sea difference in $p\text{CO}_2$ (Dufour et al., 2013, Table 1). The shift mentioned above would be more than enough to switch some of them from net sinks to net sources of natural CO_2 .

These biases concern models that neglect contributions of phosphoric and silicic acids to alkalinity (by assuming $A_T = A_C + A_B + A_W$). Equivalent biases occur when nutrient concentrations are assumed to be zero in offline calculations with output from models that include these nutrients in the alkalinity equation. Without other compensating biases, this simplification would lead to a simulated aragonite saturation horizon that is too deep (Fig. 12), a simulated onset of aragonite undersaturation in polar surface waters ($\Omega_A < 1$) that is too late, and a simulated interhemispheric north-to-south oceanic transport of carbon (Sarmiento et al., 2000) that is too weak. Our results illustrate where and by how much models err when they neglect nutrient alkalinity, either because of a simplified alkalinity equation or equivalently by assuming null nutrient concentrations (e.g., in offline calculations). Remedying these errors requires little extra coding and does not add significantly to a model's computation time. For models that do not carry P_T and Si_T as tracers, the bias in computed carbonate system variables would be reduced by calculating the alkalinity from those absent tracers as that from observed nutrient climatologies (e.g., Garcia et al., 2010). Alternatively, models that carry inorganic N but not inorganic P as a tracer could approximate the latter by multiplying the former by a fixed Redfield ratio. Yet alkalinity associated with Si_T would still be missing.

The combined effect from nutrient alkalinity and the new B_T formulation are often greater than the individual effects in the surface ocean (Fig. 8 + Fig. 10). In the deep ocean, the average combined effect shifts CO_3^{2-} by $-3 \mu\text{mol kg}^{-1}$, pH by -0.018 , and pCO_2 by $18 \mu\text{atm}$ (Fig. 9 + Fig. 11). The combined effect also shallows the computed modern ASH by about 100 m in the North Atlantic and up to 300 m in the Southern Ocean (Fig. 12).

Unfortunately, neither the new option for B_T nor that for K_1 and K_2 can be recommended at present. The new boron option leads to substantial changes in computed variables, but those results rely on best-practice formulations of K_1 and K_2 that predate the Lee et al. (2010) study and depend themselves on B_T (Mehrbach et al., 1973, Eq. 8). Likewise, the option to use new formulations of K_1 and K_2 from Millero (2010) leads to large differences in computed variables, but those constants are not consistent when calculated from sets of coefficients made available on different pH scales (Orr et al., 2014).

5 Conclusions

Although $f\text{CO}_2$ and $p\text{CO}_2$ are typically measured or calculated at the surface, e.g., to estimate air-sea CO_2 fluxes, a limited number of studies also focus on those quantities below the surface (e.g., Brewer and Peltzer, 2009; Cocco et al., 2013; Bates et al., 2013). Here we recommend that future studies concerned with subsurface values should choose one of two options: (1) compute in situ $f\text{CO}_2$ and $p\text{CO}_2$ after making pressure corrections to K_0 and the fugacity coefficient following Weiss (1974) using total in situ pressure and in situ temperature or (2) calculate potential $f\text{CO}_2$ and $p\text{CO}_2$ at 1 atm pressure while using potential instead of in situ temperature. Results should then be clearly labeled as either in situ or potential $f\text{CO}_2$ and $p\text{CO}_2$. We make this recommendation to avoid ambiguity, especially because pressure effects are large, e.g., multiplying $f\text{CO}_2$ by 2 and $p\text{CO}_2$ by 20 when at 5000 m. The mocsy 2.0 package offers the first choice as a default and the second as an option. Other public packages currently offer neither option, computing $f\text{CO}_2$ and $p\text{CO}_2$ at 1 atm total pressure with in situ temperature.

For simplicity, modelers typically make ocean carbonate chemistry calculations assuming (1) that model density is constant, (2) that simulated potential temperature is equivalent to in situ temperature, and (3) that model depth is equivalent to pressure. None of the three approximations produces significant errors at the surface. Yet errors in computed variables grow with depth. At 5000 m, the sum of the relative errors from the three approximations reach more than 3% for $p\text{CO}_2$, Ω_A , and H^+ (pH shift of up to 0.015). Yet they remain at less than 1% for the three inorganic carbon species ($<1 \mu\text{mol kg}^{-1}$). The mocsy modeling routines avoid these errors with little additional coding and trivial increases in computational time.

The same code also offers two new options to survey effects of developments since the publication of the best practices guide (Dickson et al., 2007). Those options concern an assessment that seawater contains 4% more total boron than thought previously (Lee et al., 2010) and new formulations for K_1 and K_2 designed to include low salinity waters (Millero, 2010). The new boron option leads to substantial shifts in computed surface variables, e.g.,

+4 to +6 μatm in $p\text{CO}_2$, -1.2 to -2.5 $\mu\text{mol kg}^{-1}$ in CO_3^{2-} , and -0.006 in pH. Comparable shifts at depth lead to a shallower computed ASH by 50 m in the North Atlantic and by 90 m in the Southern Ocean. The new option for K_1 and K_2 leads to a shift of +7 μatm in surface $p\text{CO}_2$ in the Southern Ocean. When both options are combined, the Southern Ocean's surface $p\text{CO}_2$ becomes 3 μatm higher than in the high northern latitudes and 6 μatm higher than in the tropics. Yet despite their large effects, we cannot yet recommend either new option. Before using the new B_T formulation, the community needs to assess how K_1 and K_2 will change because those measurements depend on B_T . And before using new formulations for K_1 and K_2 designed to include low-salinity waters, the provided sets of coefficients from which users calculate them must be refined to give consistent results.

For simplicity, models often neglect contributions of total phosphorus and silicon to total alkalinity. Doing so biases computed variables, e.g., shifting Southern Ocean surface $p\text{CO}_2$ by +6 μatm and the ASH below by up to +200 m. Because biases are not uniform, they also affect lateral and vertical gradients. For greater consistency, we invite all modelers to account for nutrient alkalinity in carbonate system calculations and to avoid the three common model approximations for subsurface calculations. The mocsy 2.0 package removes these limitations while following best practices. It also adopts the fastest and safest method to solve the total alkalinity-pH equation (Munhoven, 2013). That solver always converges, even under extreme conditions, e.g., in estuaries subject to intense freshwater fluxes where other solvers may fail.

Code availability

The mocsy package is distributed under the MIT license and is available from github. It can be retrieved in the conventional manner with git, namely by issuing the following command

```
git clone git://github.com/jamesorr/mocsy.git
```

in an X terminal on Linux, Mac or PC operating systems. If that fails, install git and try again, or go to the main web page on github <https://github.com/jamesorr/mocsy> and click on the

link “Download ZIP”. Once downloaded, mocsy can be compiled under Linux or Unix by typing

```
make
```

5 More details on the code, its compilation, and examples of its use in Fortran or when called from python can be found in the mocsy manual at <http://ocmip5.ipsl.jussieu.fr/mocsy/>.

10 *Acknowledgements.* We thank the original OCMIP code developers (C. L. Sabine, R. M. Key, and R. G. Najjar) and those who provided subsequent corrections or comments (A. Mouchet, K. Lindsay, J. Christian, and G. McKinley). We are grateful to J.-P. Gattuso, E. Lewis and D. Wallace, as well as S. van Heuven, D. Pierrot, and J. Rae for coding and making public their packages (seacarb, CO2SYS, and CO2SYS-MATLAB), which have been no small inspiration for mocsy. We also thank P. Brockmann and Y. Meurdesoif for professional advice on coding and distribution strategies. The original manuscript and code have been improved because of three dedicated referees: G. Munhoven
15 shared scientific and technical savvy while making his stable, efficient, and well-documented pH solver (SolveSAPHE) publicly available, allowing us to easily integrate it in mocsy; A. Dickson offered much critical expertise on carbonate chemistry, for instance inspiring us to include pressure corrections that dramatically alter computed subsurface $f\text{CO}_2$ and $p\text{CO}_2$; and an anonymous referee provided a wider modeler’s perspective. We are grateful to F. Perez for pointing out that formulations of K_1 and K_2 depend upon B_T . The OCMIP code was first modified with support from the
20 EU FP5 project NOCES (grant EVK2-CT-2001-00134) and the FP6 project CARBOOCEAN (grant 511176(GOCE)). More recent efforts to refine, document and make the code publicly available were supported by the French ANR project MACROES (MACROscope for Oceanic Earth System ANR-09-CEP-003) and two EU FP7 projects, CARBOCHANGE (grant 264879) and MedSeA (grant 265103).

25 References

Antonov, J. I., Seidov, D., Boyer, T. P., Locarnini, R. A., Mishonov, A. V., Garcia, H. E., Baranova, O. K., Zweng, M. M., and Johnson, D. R.: World Ocean Atlas 2009, vol. 2: Salinity, edited by: Levitus, S., Atlas NESDIS 69, NOAA, US Government Printing Office, Washington DC, 184 pp., 2010.

- Aumont, O. and Bopp, L.: Globalizing results from ocean in situ iron fertilization studies, *Global Biogeochem. Cy.*, 20, GB2017, doi:10.1029/2005GB002591, 2006.
- Bates, N. R., Orchowska, M. I., Garley, R., and Mathis, J. T.: Summertime calcium carbonate undersaturation in shelf waters of the western Arctic Ocean—how biological processes exacerbate the impact of ocean acidification, *Biogeosciences*, 10, 5281–5309, doi:10.5194/bg-10-5281-2013, <http://www.biogeosciences.net/10/5281/2013/>, 2013.
- Brewer, P. and Peltzer, E.: Limits to marine life, *Science*, 324, 347–348, doi:10.1126/science.1170756, 2009.
- Caldeira, K. and Wickett, M. E.: Anthropogenic carbon and ocean pH, *Science*, 425, p. 365, 2003.
- Cocco, V., Joos, F., Steinacher, M., Frölicher, T. L., Bopp, L., Dunne, J., Gehlen, M., Heinze, C., Orr, J., Oschlies, A., Schneider, B., Segschneider, J., and Tjiputra, J.: Oxygen and indicators of stress for marine life in multi-model global warming projections, *Biogeosciences*, 10, 1849–1868, doi:10.5194/bg-10-1849-2013, <http://www.biogeosciences.net/10/1849/2013/>, 2013.
- Dickson, A. G.: Thermodynamics of the dissociation of boric acid in synthetic seawater from 273.15 to 318.15 K, *Deep-Sea Res.*, 37, 755–766, 1990.
- Dickson, A. G.: The carbon dioxide system in seawater: equilibrium chemistry and measurements, in: *Guide to Best Practices for Ocean Acidification Research and Data Reporting*, edited by: Riebesell, U., Fabry, V. J., Hansson, L., and Gattuso, J.-P., Publications Office of the European Union, 17–40, 2010.
- Dickson, A. G. and Goyet, C.: *Handbook of Methods for the Analysis of the Various Parameters of the Carbon Dioxide System in Seawater*, version 2, CDIAC-74, ORNL, 187 pp., 1994.
- Dickson, A. G. and Riley, J. P.: The estimation of acid dissociation constants in seawater media from potentiometric titrations with strong base. I. The ionic product of water – K_W , *Mar. Chem.*, 7, 89–99, 1979.
- Dickson, A. G., Sabine, C. L., and Christian, J. R.: *Guide to best practices for ocean CO₂ measurements*, PICES Special Publication 3, 191 pp., 2007.
- Doney, S. C., Lindsay, K., Fung, I., , and John, J.: Natural variability in a stable, 1000-yr global coupled climate-carbon cycle simulation, *J. Climate*, 19, 3033–3054, doi:10.1175/JCLI3783.1, 2006.
- Dufour, C. O., Sommer, J. L., Gehlen, M., Orr, J. C., Molines, J.-M., Simeon, J., and Barnier, B.: Eddy compensation and controls of the enhanced sea-to-air CO₂ flux during positive phases of the Southern Annular Mode, *Global Biogeochem. Cycles*, 27, 950–961, doi:10.1002/gbc.20090, 2013.

- Follows, M. J., Ito, T., and Dutkiewicz, S.: On the solution of the carbonate chemistry system in ocean biogeochemistry models, *Ocean Model.*, 12, 290–301, doi:10.1016/j.ocemod.2005.05.004, 2006.
- Frankignoulle, M.: A complete set of buffer factors for acid/base CO₂ system in seawater, *J. Marine Syst.*, 5, 111–118, 1994.
- 5 Garcia, H. E., Locarnini, R. A., Boyer, T. P., Antonov, J. I., Zweng, M. M., Baranova, O. K., and Johnson, D. R.: World Ocean Atlas 2009, vol. 4: Nutrients (phosphate, nitrate, silicate), edited by: Levitus, S., Atlas NESDIS 71, NOAA, US Government Printing Office, Washington DC, 398 pp., 2010.
- Key, R. M., Sabine, C. L., Lee, K., Wanninkhof, R., Bullister, J., Feely, R. A., Millero, F. J., Mordy, C., and Peng, T.-H.: A global ocean carbon climatology: results from Global Data Analysis Project (GLODAP), *Global Biogeochem. Cy.*, 18, GB4031, doi:10.1029/2004GB002247, 2004.
- 10 Lavigne, H. and Gattuso, J.-P.: seacarb: seawater carbonate chemistry with R. R package version 2.4.2, in: The Comprehensive R Archive Network, available at: http://www.obs-vlfr.fr/~gattuso/files/Lavigne_Gattuso_2011_seacarb_2.4.2.pdf (last access: 24 April 2014), 2011.
- 15 Lee, K., Kim, T.-W., Byrne, R. H., Millero, F. J., Feely, R. A., and Liu, Y.-M.: The universal ratio of boron to chlorinity for the North Pacific and North Atlantic oceans, *Geochim. Cosmochim. Ac.*, 74, 1801–1811, doi:10.1016/j.gca.2009.12.027, 2010.
- Lewis, E. and Wallace, D. W. R.: Program Developed for CO₂ System Calculations, ORNL/CDIAC-105, Carbon Dioxide Inf. Anal. Cent., Oak Ridge Natl. Lab., Oak Ridge, Tenn., 38 pp., 1998.
- 20 Locarnini, R., Mishonov, A., Antonov, J., Boyer, T., Garcia, H., Baranova, O., Zweng, M., and Johnson, D.: World Ocean Atlas 2009, vol. 1: Temperature, edited by: Levitus, S., Atlas NESDIS 68, NOAA, US Government Printing Office, Washington DC, 184 pp., 2010.
- Lueker, T. J., Dickson, A. G., and Keeling, C. D.: Ocean $p\text{CO}_2$ calculated from dissolved inorganic carbon, alkalinity, and equations for K_1 and K_2 : validation based on laboratory measurements of CO₂ in gas and seawater at equilibrium, *Mar. Chem.*, 70, 105–119, 2000.
- 25 Maier-Reimer, E.: Geochemical cycles in an ocean general circulation model: preindustrial tracer distributions, *Global Biogeochem. Cy.*, 7, 645–677, 1993.
- Mehrbach, C., Culbertson, C. H., Hawley, J. E., and Pytkowicz, R. M.: Measurement of the apparent dissociation constants of carbonic acid in seawater at atmospheric pressure, *Limnol. Oceanogr.*, 18, 897–907, 1973.
- 30 Millero, F. J.: Thermodynamics of the carbon dioxide system in the oceans, *Geochim. Cosmochim. Ac.*, 59, 661–677, 1995.

- Millero, F. J.: Carbonate constants for estuarine waters, *Mar. Freshwater Res.*, 61, 139–142, doi:10.1071/MF09254, 2010.
- Millero, F. J., Graham, T. B., Huang, F., Bustos-Serrano, H., and Pierrot, D.: Dissociation constants of carbonic acid in seawater, *Mar. Chem.*, 100, 80–94, doi:10.1016/j.marchem.2005.12.001, 2006.
- 5 Morris, A. and Riley, J.: The bromide/chlorinity and sulphate/chlorinity ratio in sea water, in: *Deep-Sea Research and Oceanographic Abstracts*, 13, 699–705, 1966.
- Mucci, A.: The solubility of calcite and aragonite in seawater at various salinities, temperatures, and one atmosphere total pressure, *Am. J. Sci.*, 283, 780–799, 1983.
- Müller, S. A., Joos, F., Plattner, G.-K., Edwards, N. R., and Stocker, T. F.: Modeled natural and excess radiocarbon: sensitivities to the gas exchange formulation and ocean transport strength, *GBC*, 22, GB3011, doi:10.1029/2007GB003065, doi:10.1029/2007GB003065, 2008.
- Munhoven, G.: The mathematics of the total alkalinity—pH equation—pathway to robust and universal solution algorithms: the SolveSAPHE package v1.0.1, *Geosci. Model Dev.*, 6, 1367–1388, doi:10.5194/gmd-6-1367-2013, 2013.
- 15 Orr, J. C.: Recent and future changes in ocean carbonate chemistry, in: *Ocean Acidification*, edited by Gattuso, J.-P. and Hansson, L., chap. 3, pp. 41–66, Oxford Univ. Press, 2011.
- Orr, J. C. and Epitalon, J.-M.: Improved routines to model the ocean carbonate system: mocsy 1.0, *Geosci. Model Dev. Disc.*, 7, 2877–2902, doi:10.5194/gmdd-7-2877-2014, 2014.
- Orr, J. C., Fabry, V. J., Aumont, O., Bopp, L., Doney, S. C., Feely, R. A., Gnanadesikan, A., Gruber, N., Ishida, A., Joos, F., Key, R. M., Lindsay, K., Maier-Reimer, E., Matear, R., Monfray, P., Mouchet, A., Najjar, R. G., Plattner, G.-K., Rodgers, K. B., Sabine, C. L., Sarmiento, J. L., Schlitzer, R., Slater, R. D., Totterdell, I. J., Weirig, M.-F., Yamanaka, Y., and Yool, A.: Anthropogenic ocean acidification over the twenty-first century and its impact on calcifying organisms, *Nature*, 437, 681–686, doi:10.1038/nature04095, 2005.
- 20 Orr, J. C., Epitalon, J.-M., and Gattuso, J.-P.: Comparison of seven packages that compute ocean carbonate chemistry, *Biogeosciences Discuss.*, 11, 5327–5397, doi:10.5194/bgd-11-5327-2014, 2014.
- Perez, F. F. and Fraga, F.: Association constant of fluoride and hydrogen ions in seawater, *Mar. Chem.*, 21, 161–168, 1987.
- 30 Proye, A. and Gattuso, J.-P.: Seacarb, an R package to calculate parameters of the seawater carbonate system, available at: http://www.obs-vlfr.fr/~gattuso/files/Proye_Gattuso_2003_seacarb_0.93.pdf (last access: 24 April 2014), 2003.

- Riley, J. P.: The occurrence of anomalously high fluoride concentrations in the North Atlantic, *Deep-Sea Res.*, 12, 219–220, 1965.
- Riley, J. and Tongudai, M.: The major cation/chlorinity ratios in sea water, *Chem. Geol.*, 2, 263–269, 1967.
- 5 Sarmiento, J. L., Monfray, P., Maier-Reimer, E., Aumont, O., Murnane, R., and Orr, J. C.: Sea–air CO₂ fluxes and carbon transport: a comparison of three ocean general circulation models, *Global Biogeochem. Cy.*, 14, 1267–1281, 2000.
- Upström, L. R.: The boron/chlorinity ratio of deep-sea water from the Pacific Ocean, in: *Deep-Sea Research and Oceanographic Abstracts*, vol. 21, Elsevier, 161–162, 1974.
- 10 van Heuven, S., Pierrot, D., Rae, J. W. B., Lewis, E., and Wallace, D. W. R.: MATLAB Program Developed for CO₂ System Calculations, ORNL/CDIAC-105b, Carbon Dioxide Inf. Anal. Cent., Oak Ridge Natl. Lab., Oak Ridge, Tenn., 2011.
- Weiss, R. F.: Carbon dioxide in water and seawater: the solubility of a non-ideal gas, *Mar. Chem.*, 2, 203–215, 1974.
- 15 Weiss, R. F. and Price, B. A.: Nitrous oxide solubility in water and seawater, *Mar. Chem.*, 8, 347–359, 1980.

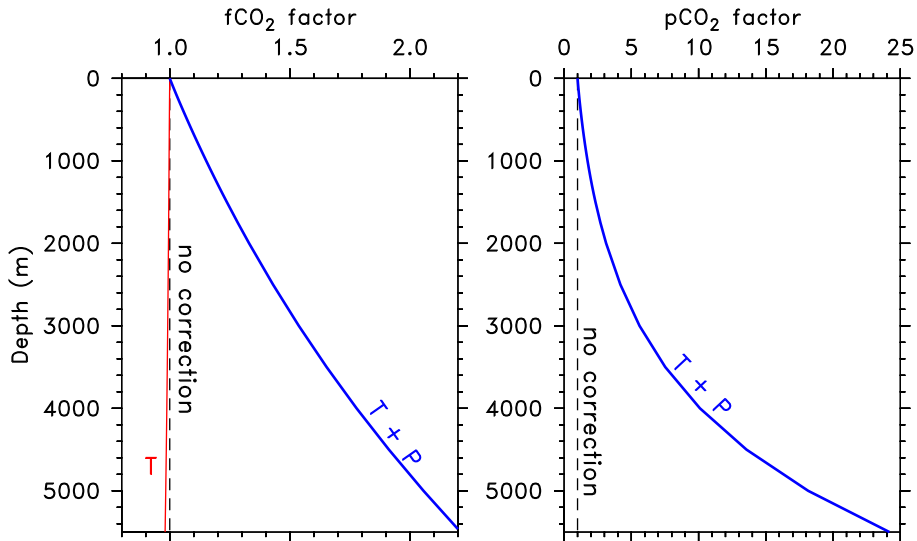


Figure 1. Effect of pressure on K_0 and C_f given as factors that would need to be multiplied by (left) $f\text{CO}_2$ and (right) $p\text{CO}_2$ computed without pressure corrections. The reference (black dashed) are the pseudo potential values computed from surface P and in situ T, the potential values (red) are computed from surface P and potential T, and the in situ values (blue) are computed total P and in situ T. These global-mean vertical profiles were computed with mocsy 2.0 and the GLODAP-WOA2009 gridded input data.

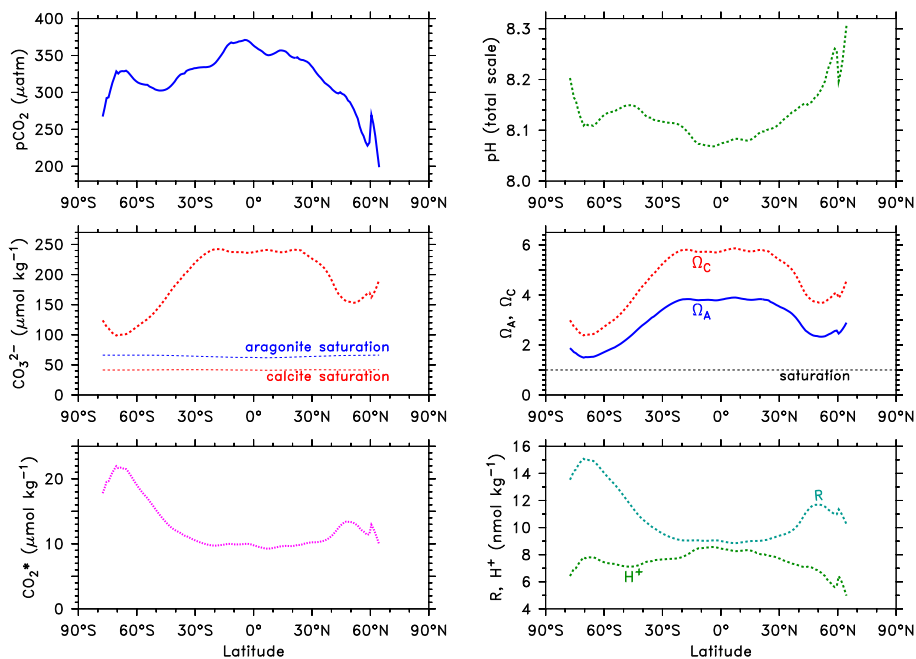


Figure 2. Surface zonal means of carbonate system variables computed with mocsy 2.0 from the gridded GLODAP data for A_T and C_T combined with corresponding data from the 2009 World Ocean Atlas for in situ T, S, P_T , and Si_T .

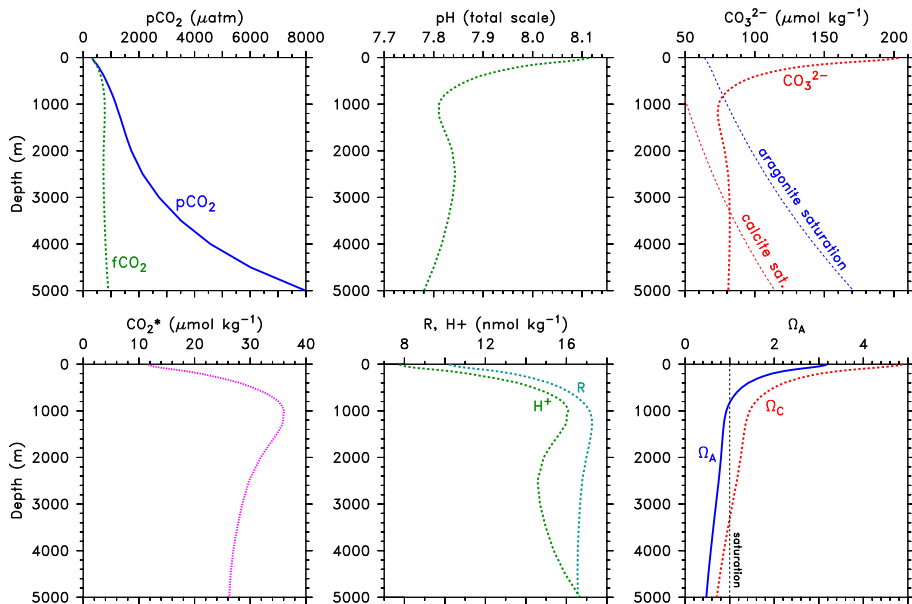


Figure 3. Global-mean vertical profiles of carbonate system variables computed with mocsy 2.0 from the data described in Fig. 2.

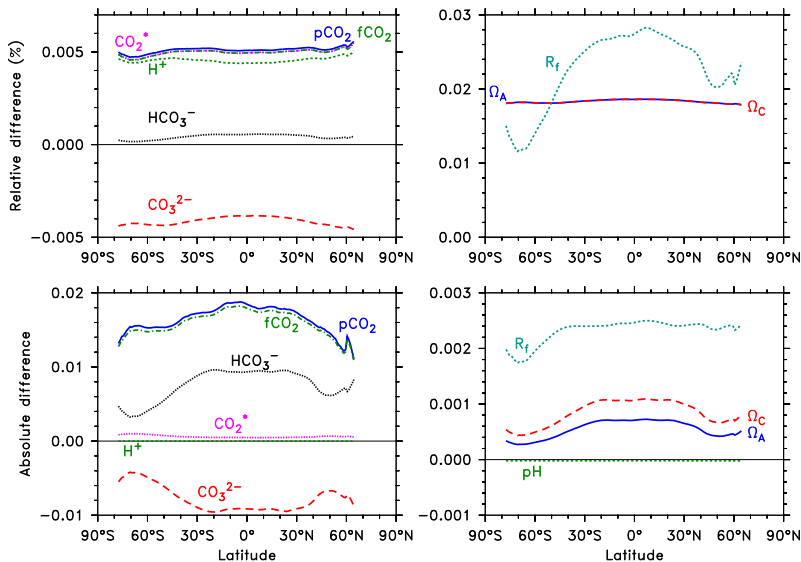


Figure 4. Differences in surface zonal means between mocsy and CO2SYS for computed variables shown as (top) percent relative differences ($100(V_{\text{mocsy}} - V_{\text{co2sys}})/V_{\text{co2sys}}$) and as (bottom) absolute differences ($V_{\text{mocsy}} - V_{\text{co2sys}}$). The absolute differences are given in $\mu\text{mol kg}^{-1}$ for the 3 inorganic carbon species, in nmol kg^{-1} for H^+ , and in μatm for $f\text{CO}_2$ and $p\text{CO}_2$; other computed variables are unitless.

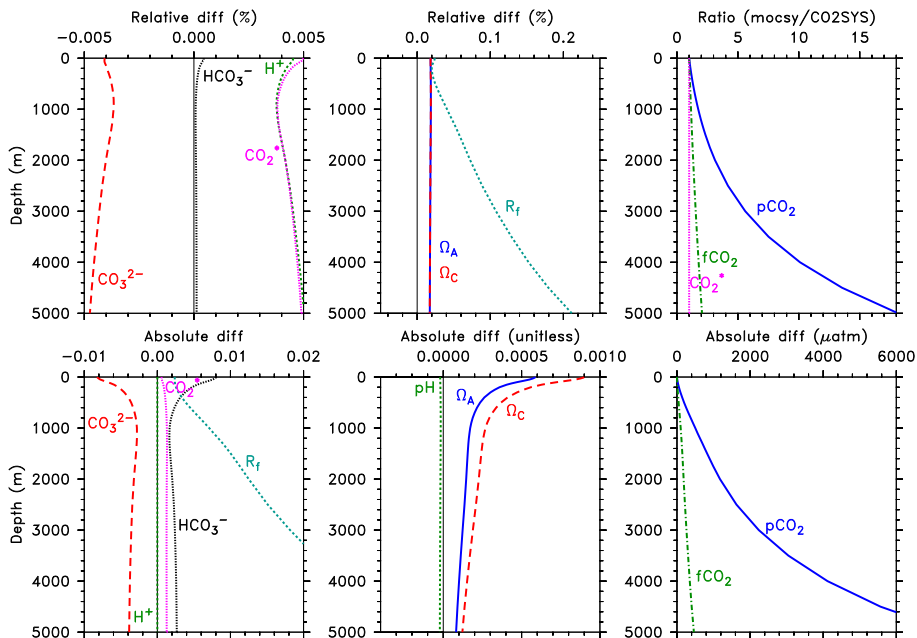


Figure 5. Differences in global-mean profiles between mocsy and CO2SYS for computed variables, as in Fig. 4. The large differences in $f\text{CO}_2$ and $p\text{CO}_2$ are shown as ratios (mocsy/CO2SYS) (top right).

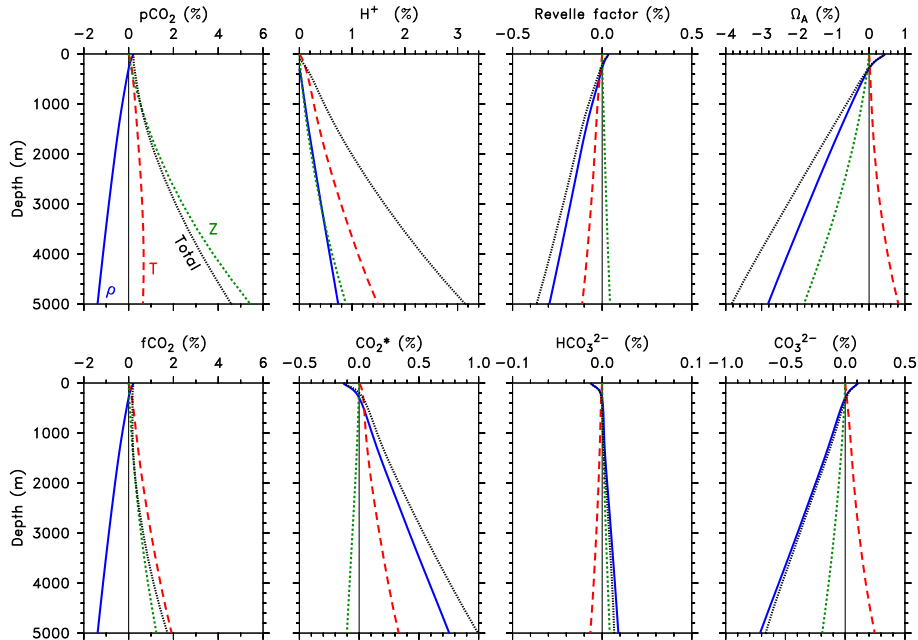


Figure 6. Relative changes in global-mean profiles that would result by avoiding each of the three ocean-model approximations: (1) that density is constant (blue ρ), (2) that potential temperature is equivalent to in situ temperature (red T), and (3) that depth (m) is equivalent to pressure (dbar) (green Z). Also shown is the sum of all three effects (black). Associated errors are equal but opposite in sign to the changes shown.

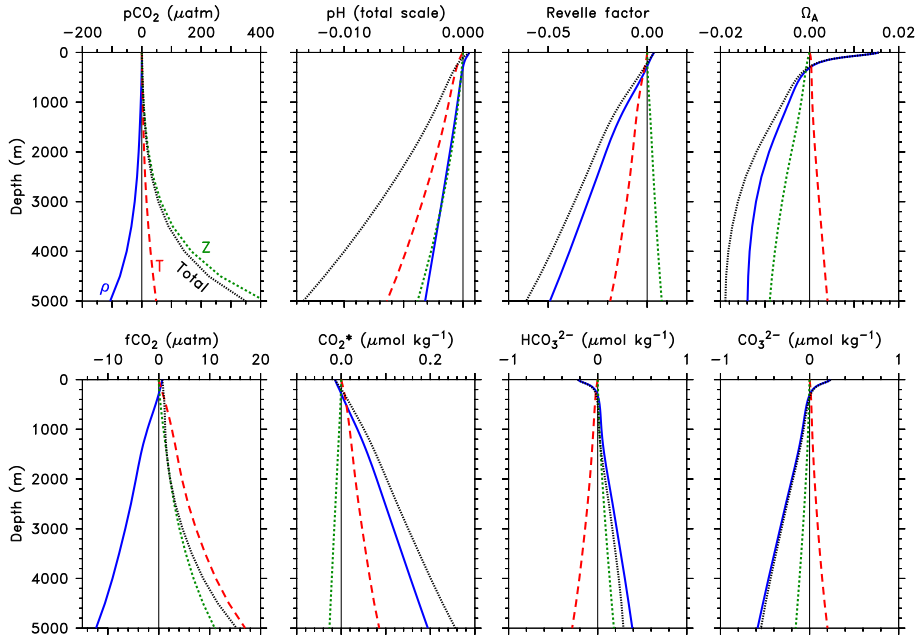


Figure 7. Absolute changes in global-mean profiles of computed variables when each of the three ocean-model approximations is avoided, with line colors and patterns as in in Fig. 6.

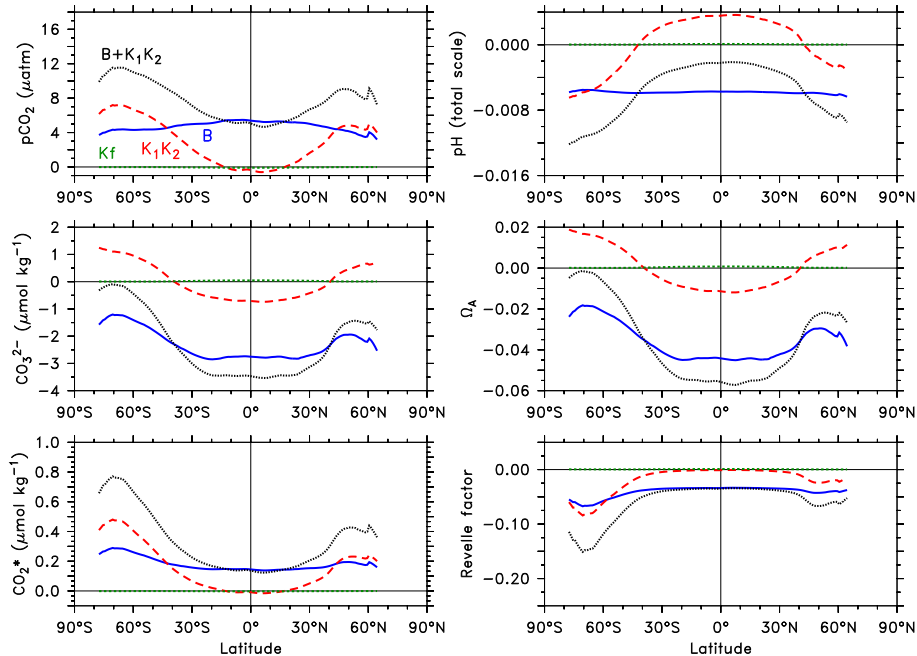


Figure 8. Changes in zonal means of computed variables due to replacing best-practice recommendations with other options: (1) the Lee et al. (2010) formulation for the total boron-to-salinity ratio (blue B), (2) the Millero (2010) formulations for K_1 and K_2 (red, K_1K_2), and (3) the Dickson and Riley (1979) formulation for K_F (green K_F). Absolute differences are shown relative to (1) Uppström (1974), (2) Lueker et al. (2000), and (3) Perez and Fraga (1987). Also indicated is the sum of the first two changes (black).

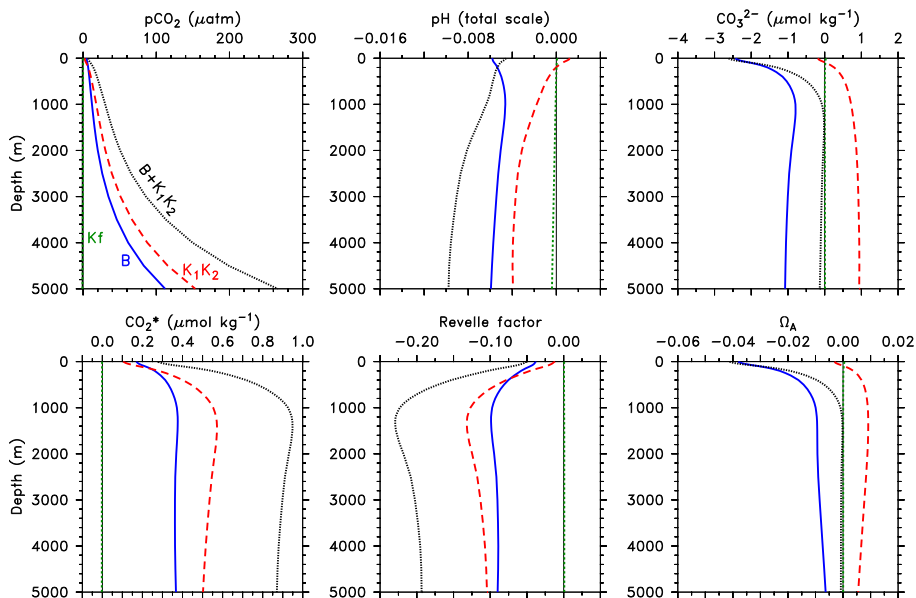


Figure 9. Absolute changes in global-mean vertical profiles of computed variables due to replacing best-practice recommendations with the three options mentioned in Fig. 8.

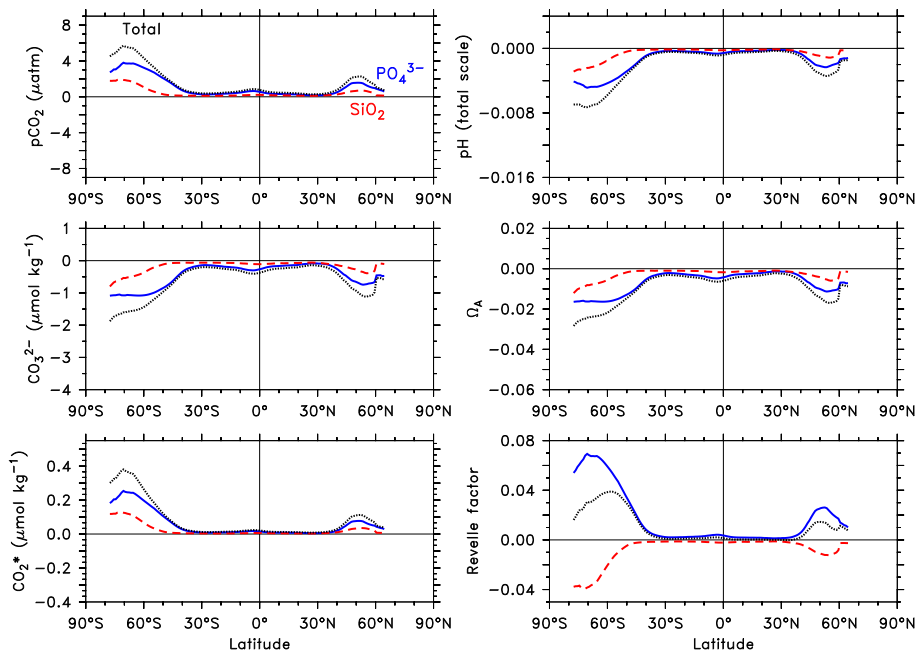


Figure 10. Absolute changes in zonal means of computed variables due to alkalinity contributions from P_T , and (blue solid), Si_T (red dashed), and their sum (black dotted) relative to the case where alkalinity from phosphoric and silicic acids is neglected.

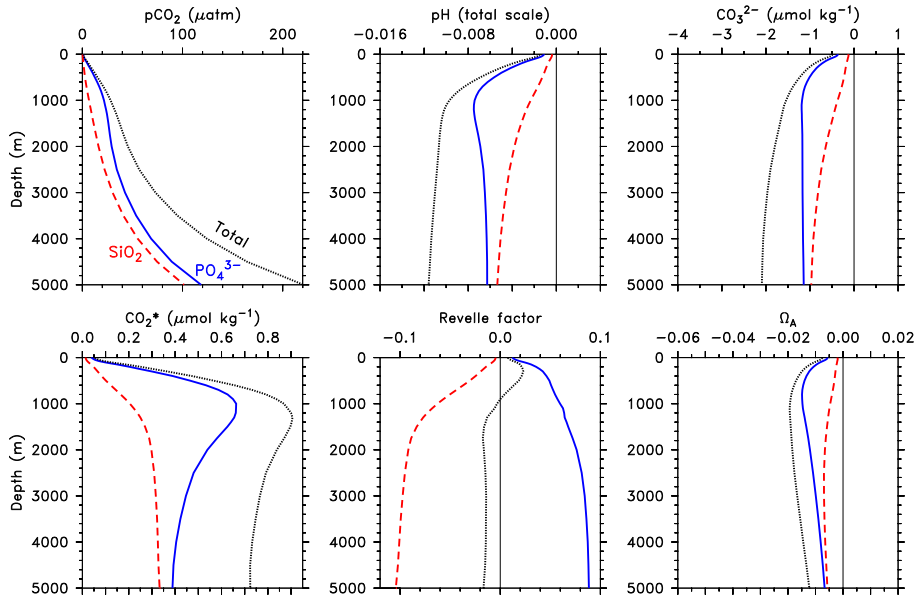


Figure 11. Absolute changes in global-mean profiles of computed variables attributable to nutrient alkalinity, i.e., for the same components shown in Fig. 10.

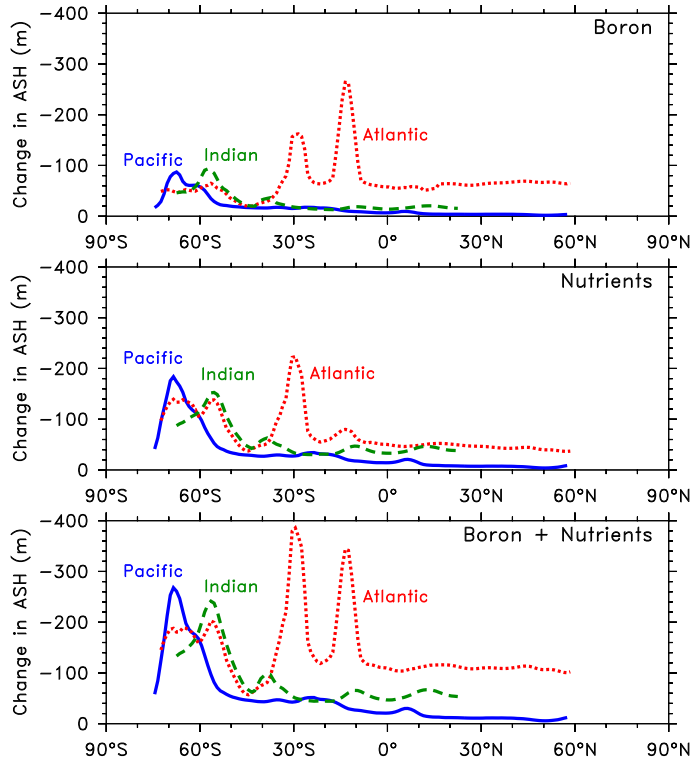


Figure 12. Changes in the aragonite saturation horizon (ASH) due to (top) using the new formulation of total boron (Lee et al. minus Uppström), (middle) accounting for nutrient alkalinity (relative to the common simplification where it is neglected), and (bottom) summing both corrections. Changes in ASH (m) are smoothed over 5° bands of latitude and shown as zonal means over the Atlantic, Pacific, and Indian Oceans. The peaks at 30° S and 12° S in the Atlantic are caused by subtle shifts in horizontal gradients of Ω_A .