

Simulations of direct and reflected waves trajectories for ground-based GNSS-R experiments

N. Roussel^{1,2}, F. Frappart^{1,2}, G. Ramillien^{1,2}, C. Desjardins^{1,2,3,4}, P. Gégout^{1,2}, F. Pérosanz^{1,2,4}, and R. Biancale^{1,2,4}

¹Université de Toulouse, CNRS, IRD, GET-OMP, Toulouse, France

²Groupe de Recherche en Géodésie Spatiale, Toulouse, France

³Collecte Localisation Satellites, Ramonville Saint Agne, France

⁴Centre National d'Etudes Spatiales, Toulouse, France

Correspondence to: N. Roussel
(nicolas.roussel@get.obs-mip.fr)

Abstract. The detection of Global Navigation Satellite System (GNSS) signals that are reflected off the surface, along with the reception of direct GNSS signals offers a unique opportunity to monitor water level variations over land and ocean. The time delay between the reception of the direct and the reflected signal gives access to the altitude of the receiver over the reflecting surface. The field of view of the receiver is highly dependent on both the orbits of the GNSS satellites and the configuration of the study site geometries. A simulator has been developed to accurately determine the location of the reflection points on the surface by modelling the trajectories of GNSS electromagnetic waves that are reflected by the surface of the Earth. Only the geometric problem was considered using a specular reflection assumption. The orbit of the GNSS constellations satellite (mainly GPS, GLONASS and Galileo), and the position of a fixed receiver are used as input. Four different simulation modes are proposed depending on the choice of the Earth surface model (local plane, osculating sphere or ellipsoid) and the consideration of topography likely to cause masking effects. Angular refraction effects derived from adaptive mapping functions are also taken into account. This simulator was developed to determine where the GNSS-R receivers should be located to monitor efficiently a given study area. In this study, two test sites were considered. The first one at the top of the 65 m Cordouan lighthouse in the Gironde estuary, France, and the second one in the shore of the Geneva lake (50 m above the reflecting surface), at the border between France and Switzerland. This site is hidden by mountains in the south (orthometric altitude up to 2000 m), and overlooking the lake in the north (orthometric altitude of 370 m). For this second test site configuration, reflections occur until 560 m from the

receiver. The planimetric (arc length) differences (resp. altimetric difference as WGS84 ellipsoid height) between the positions of the specular reflection points obtained considering the Earth's surface as an osculating sphere or as an ellipsoid were found to be on average 9 cm (resp. < 1 mm) for satellite elevation angles greater than 10° and 13.9 cm (resp. < 1 mm) for satellite elevation angle between 5° and 10°. The altimetric and planimetric differences between the plane and sphere approximations are on average below 1.4 cm (resp < 1 mm) for satellites elevation angle greater than 10° and below 6.2 cm (resp. 2.4 mm) for satellite elevation angle between 5° and 10°. The simulations highlight the importance of the Digital Elevation Model (DEM) integration: average planimetric differences (resp. altimetric) with and without integrating the DEM (with respect to the ellipsoid approximation) were found to be about 6.3 m (resp. 1.74 m) with the minimum elevation angle equal to 5°. The correction of the angular refraction due to troposphere on the signal leads to planimetric differences (resp. altimetric) about 18 m (resp. 6 cm) maximum for a 50-m receiver height above the reflecting surface whereas the maximum is 2.9 m (resp. 7 mm) for a 5-m receiver height above the reflecting surface. These errors deeply increase with the receiver height above the reflecting surface. By setting it to 300 m, the planimetric errors reach 116 m and altimetric errors reach 32 cm for satellite elevation angle lower than 10°. The tests performed with the simulator presented in this paper highlight the importance of the choice of the Earth representation and also the non-negligible effect of angular refraction due to the troposphere on the specular reflection points positions. Various outputs (time-varying reflection point coordinates, satellites positions and ground paths, wave trajectories, first Fresnel

zones, etc.) are provided either as text or KML files for visualizing with Google Earth.

1 Introduction

The Global Navigation Satellite System (GNSS), which includes the American GPS, the Russian GLONASS, and the European Galileo (which is getting denser) uses L-band microwave signals to provide accurate 3-D positioning on any point of the Earth surface or close vicinity. Along with the space segment development, the processing techniques have also improved considerably, with a better consideration of the various sources of error in the processing. Among them, multipaths still remain a major problem, and the mitigation of their influence has been widely investigated (Bilich A.L., 2004). ESA (European Space Agency) first proposed the idea of taking advantage of the multipaths phenomenon in order to assess different parameters of the reflecting surface (Martin-Neira M., 1993). This opportunistic remote sensing technique, known as GNSS-Reflectometry (GNSS-R), is based on the analysis of the electromagnetic signals emitted continuously by the GNSS satellites and detected by a receiver after reflection on the Earth's surface. Several parameters of the Earth surface can be retrieved either using the time-delay between the signals received by the upper (direct signal) and the lower (reflected signal) antennas, or by analyzing the waveforms (temporal evolution of the signal power) corresponding to the reflected signal. This technique offers a wide-range of applications in Earth sciences. The time-delay can be interpreted in terms of altimetry as the difference of height between the receiver and the surface. Temporal variations of sea (Lowe S.T. et al., 2002; Ruffini G. et al., 2004; Löfgren J.S. et al., 2011; Semmling A.M. et al., 2011; Rius A. et al., 2012) and lakes level (Treuhaft P. et al., 2004; Helm A., 2008) were recorded with an accuracy of a few cm using in situ and airborne antennas. Surface roughness can be estimated from the analysis of the Delay-Doppler Maps (DDM) derived from the waveforms of the reflected signals. They can be related to parameters such as soil moisture (Katzberg S. et al., 2006; Rodriguez-Alvarez N. et al., 2009, 2011) over land, or wave heights and wind speed (Komjathy A. et al., 2000; Zavorotny A.U. et al., 2000; Rius A. et al., 2002; Soulat F. et al., 2004) over the ocean, or ice properties (Gleason S., 2006; Cardellach E. et al., 2012). GNSS-R technique presents two main advantages: (1) a dense spatial and temporal coverage, not only limited to a single measurement point or a non repetitive transect as using classical GNSS buoys, (2) a guarantee of service for the next decades (because of the strategic role played by these systems). GNSS-R altimetric accuracy is today at the level of few cm. But this technique will benefit, in the future, from improved processing technique and from the densification of the GNSS constellation. The commonly-used GNSS-R sys-

tem consist of two antennas (figure 1): the first one is right-hand circular polarized (RHCP) and zenith-facing to receive the direct waves. The second one, left-hand circular polarized (LHCP) and nadir-facing to receive the reflected waves. These reflected waves will predominantly change their polarization from RCHP to LHCP by reflecting at near-normal incidence. The reflected signals have an additional path delay with respect to the direct ones. The analysis of the path difference between these direct and reflected signals is used to estimate the relative height difference between the two antennas. In order to anticipate the impact of the geometric configuration of the experiment, a simulator has been developed to estimate the positions of reflection points using a specular reflection point assumption. Four different methods were implemented: approximating the Earth's surface as a local plane, as an osculating sphere, as an ellipsoid or integrating a Digital Elevation Model (DEM). In addition, the signal bending due to the neutral part of atmosphere is taken into account using the Adaptive Mapping Functions (AMF) from Gégout et al. (2011) and made available by GRGS (Groupe de Recherche en Géodésie Spatiale). Simulations were performed for different configurations: variations in the reflectometer height, mask effects due to terrain, satellite network geometry.

This article is composed by three main parts following the logical structure of the figure 2. The first part presents the datasets used for initiating simulations, the second one concerns the methodologies for the determination of the reflection points while the last one deals with the simulator performances and simulation results.

Design of the simulator

The simulator has been developed in the GNU R language, generally used for data processing and statistical analysis. A user manual and a description of the R language can be found on the website <http://www.r-project.org/>. The main interest of such a language remains in that it is distributed under GNU GPL license which does R routines an open source program, available on various platforms (i.e. GNU/Linux, FreeBSD, NetBSD, OpenBSD, Mac OS and Windows).

The simulator is composed by three main blocks (figure 2): an input block which contains the different elements mandatory for the processing; a processing block where the user can choose which algorithm to be used, and an output block containing the different results of the simulation.

As inputs, this simulator requires the receiver coordinates, the satellite ephemeris and a set of optional environmental parameters such as a DEM in order to take the possible masking of the terrestrial topography into account, as well as adaptive mapping functions to integrate atmospheric delays and bending effects.

As outputs, the simulator provides the time-varying reflection point coordinates, but also various KML files (*Keyhole Markup Language* - standard format used by Google Earth)

170 such as satellites positions and ground paths, waves trajecto- 215
ries and Fresnel first surfaces which can be opened using the
Google Earth visualization tool.

2 Datasets

2.1 GNSS orbit parameters

175 The simulations are based on the determination of the po-
sitions of the specular reflection points, once the receiver
and the satellites positions are known. Satellites coordi-
nates can be obtained from the International GNSS Ser- 225
vice (IGS) ephemeris final products which provide GNSS
orbit and clock offset data with a temporal resolution of
15 minutes in the SP3 format for the past epochs, or de-
rived from the Keplerian parameters (semi-major axis, in-
clination, and argument of perigee) to predict GNSS satel- 230
lite positions. Ephemeris products are available on the IGS
website: <http://igs.org/> and Keplerian parameters e.g. on:
185 <http://www.navcen.uscg.gov>

2.2 Radio-electric mask

Simulations are performed for a given receiver position in the
WGS84 coordinates system and height above the ground. It
190 is possible to apply an elevation or azimuthal angles mask to
the simulations to avoid satellites with low elevation angle 240
for instance. The elevation angle mask commonly used is set
to 10° min and 90° max and no mask is set in azimuth.

2.3 SRTM Digital Elevation Model

195 The most realistic simulation needs the integration of a Digi-
tal Elevation Model (DEM) in order not to only take the pos-
sible masking of satellites into account, but to get more ac-
curate and exact positions of the specular reflection points as
well. The hole-filled version 4 of the Shuttle Radar Topogra- 250
phy Mission (SRTM) DEM, with a spatial resolution of 90 m
at the equator is used (Jarvis J. et al. , 2008). The altitudes are
given with reference to the EGM96 geoid model. Uncertainty
on altitude is around 16 m over mountainous areas (Rod-
riguez E. et al. , 2005). It is made available by files of 5° x 5° 255
205 for land areas between 60°N and 60°S by the Consortium for
Spatial Information (CGIAR-CSI): <http://srtm.csi.cgiar.org/>.

2.4 Earth Gravitational Model EGM96

In order to be able to convert between ellipsoidal heights
(with respect to the WGS84 ellipsoid) and altitudes (with
210 respect to the EGM96 geoid model) when producing KML
files or when integrating a DEM, the knowledge of the geoid
undulation is mandatory. In this study, we interpolate a 15 x
15-Minute Geoid Undulation Grid file derived from EGM96
265 model in a tide-free system released by the U.S. National

Geospatial-Intelligence Agency (NGA) EGM Development
Team:

<http://earth-info.nga.mil/GandG/wgs84/gravitymod/>. The
error on the interpolation is lower than 2 cm (NASA and
NIMA , 1998).

2.5 Adaptive Mapping Functions

The neutral atmosphere bends the propagation path of the
GNSS signal and retards the speed of propagation. The range
between the satellite and the tracking site is neither the ge-
ometric distance nor the length of the propagation path, but
the radio range of the propagation path (Marini J.W. , 1972).

For GNSS-R measurements, the tropospheric effects in-
duced by the neutral part of the atmosphere are an impor-
tant source of error. Indeed, GNSS-R measurements are of-
ten done at low elevation angle where the bending effects
are maximal. Accurate models have to be used to mitigate
signal speed decrease and path bending. It is commonly ac-
cepted to model tropospheric delays by calculating the zenith
tropospheric delay and obtaining the slant tropospheric de-
lays with a mapping function. New mapping functions have
235 been developed in the 2000's (Boehm J. et al , 2006; Niell A.
, 2001) and significantly improve the geodetic positioning.
Although modern mapping functions like VMF1 (Boehm J.
et al , 2006b) and GPT2/VMF1 (Lagler K. et al. , 2013)
are derived from Numerical Weather Models (NWM), most
of these mapping functions ignore the azimuth dependency
which is usually introduced by two horizontal gradient pa-
rameters - in north-south and east-west directions - esti-
mated directly from observations (Chen G. et al. , 1997). More re-
cently, the use of ray-traced delays through NWM directly
at observation level has shown an improvement on geodetic
results (Hobiger T. et al , 2008; Nafisi V. et al , 2012; Zus F.
et al , 2012). The Adaptive Mapping Functions (AMF) are
designed to fit the most information available in NWM - es-
pecially the azimuth dependency - preserving the classical
mapping function strategy. AMF are thus used to approxi-
mate thousands of atmospheric ray-traced delays using a few
tens of coefficients with millimetre accuracy at low eleva-
tion (Gégout P. et al. , 2011). AMF have a classical form with
terms which are function of the elevation. But, they also in-
clude coefficients which depend on the azimuth to represent
the azimuthal dependency of ray-traced delays. In addition,
AMF are suitable to adapt to complex weather by chang-
ing the truncation of the successive fractions. Therefore, the
AMF are especially suited to correct propagation of low el-
elevation GNSS-R signals. In our study we use AMF directly
provided by GRGS (Groupe de Recherche en Géodésie Spa-
tiale) and computed following Gégout P. et al. , 2011.

2.6 Data used for a simulator usage illustration

In order to assess the ocean tide influence on the posi-
tions of the reflection points estimated at an offshore exper-

imental site located at the top of the Cordouan lighthouse (45°35'11"N ; 1°10'24"W), we use 24 hours of REFMAR (*Réseau de Référence des Observations Marégraphiques*) tide gauge observations, with a sampling frequency of 5³²⁰ minutes. The tide gauge records of the station of Royan (45°37'14.07"N;1°01'40.12", located 12 km from the lighthouse) are the property of MEDDE (Ministère de l'Ecologie, du Développement Durable et de l'Energie), and they are available on the REFMAR website (<http://refmar.shom.fr>).

275 3 Methodology : determination of the positions of reflection points

The difference of phase between the two antennas (A-RHCP and B-LHCP on figure 1) at an epoch t for the i^{th} GNSS³³⁰ satellite can be seen as a classical single difference between two receivers used for relative positioning as follows :

$$\lambda \Delta \phi_{AB}^i(t) = \Delta \delta_{AB}^i(t) - \lambda \Delta N_{AB}^i - c \Delta t_{AB} \quad (1)$$

where λ is the wavelength of the GNSS wavelength carrier, $\Delta \phi_{AB}^i$ the measured carrier phase difference between the direct and received signals expressed in cycles, $\Delta \delta_{AB}^i$ ²⁸⁵ the difference in distance between the direct and received signals, ΔN_{AB}^i is the difference of phase ambiguity between the direct and received signals, c the speed of light in vacuum, Δt_{AB} the receivers clock bias difference. As the baseline between the two receivers is short (a few cm to a few tenth of³³⁵ cm), and in the case of low altitude of the receivers, both tropospheric and ionospheric effects are neglected due to the spatial resolution of the current atmospheric and ionospheric models. Besides, when both antennas are connected to same receiver, the receiver clock bias difference is also cancelled out. In this study, we only consider the difference in distance between direct and reflected signals as illustrated in figure 1.³⁴⁰

The processing block contains four algorithms for determining the positions of the specular reflection points: the first considering the Earth as a local plane in the vicinity of the reflection point, the second as an osculating sphere, the third as an ellipsoid which corresponds to the WGS84 ellipsoid³⁴⁵ which has been expanded until the ellipsoid height of the receiver equals the height of the receiver above the reflecting surface, and the last one uses the ellipsoid approximation but takes the Earth's topography into account: see figure 3. Comparisons between the different approximations of the Earth³⁵⁰ shape will be performed in subsection 4.1.

All of them are based on iterative approaches to solve the Snell-Descartes law for reflection: the unique assumption is that the angle of incidence is equal to the angle of reflection on a plane interface separating two half-space media (a³⁵⁵ locally planar approximation is adopted when the surface is not everywhere planar). In the plane, sphere and ellipsoid approximations, the specular reflection point of a given satellite is contained within the plane defined by the satellite, the receiver and the center of the Earth. With regards to the DEM³⁶⁰

integration, reflection can occur everywhere. In order to be able to compare the specular reflection points positions obtained by integrating a DEM, and to simplify the problem, we will only consider the reflections occurring within the plane, even while integrating a DEM.

3.1 Local plane reflection approximation

Referring to figure 3, let us consider the projection of the receiver $R0$ on the osculating sphere approximation (see subsection 3.2). We define the local plane P as the plane tangent to the sphere at $R0$. Let $T0$ be the projection of the satellite on P and R' the symmetry of $R0$ relative to P . We look for the positions of the specular reflection points on P . Considering the Thales theorem in the triangles $R'SR0$ and $STT0$, we have (see figure 3):

$$\frac{X_S}{(X_{T0} - X_S)} = \frac{h}{H} \quad (2)$$

And so:

$$X_S = \frac{hX_{T0}}{H + h} \quad (3)$$

3.2 Local sphere reflection approximation

The model we consider is an osculating sphere. Its radial direction coincides with the ellipsoidal normal (subsection 3.3) and its center is set at an ellipsoidal height equal to the negative value of the Gaussian radius of curvature defined as:

$$r_E = \frac{a^2 b}{a^2 \cos^2(\varphi) + b^2 \sin^2(\varphi)} \quad (4)$$

with φ the latitude of the receiver, a and b the semi-major and semi-minor axis of the WGS84 ellipsoid. Please refer to (Nievinski F.G. and Santos M.C. , 2010) for further information on the different approximations of the Earth, particularly on the osculating sphere.

J. Kostecky and C. Wagner already suggested an algorithm to retrieve the specular reflection point positions by approximating the Earth as a sphere in (Kostecky J. et al. , 2005; Wagner C., Klokocnik J. , 2003). Their algorithm is based on an optimized iterative scheme which is equivalent to make the position of a fictive specular point vary until verifying the first law of Snell-Descartes. A similar approach will be used in this paper in the subsection 3.3 with the ellipsoid approximation. Here we chose to adopt a more analytical algorithm, first proposed by (Helm A. , 2008). In order to validate this algorithm, comparisons between it and the iterative one developed for the ellipsoid approach will be performed, by setting the minor and major axis of the ellipsoid equal to the sphere radius (see part 4.2.1).

Let us consider the vertical plane formed by the transmitter (GNSS) satellite (T), the receiver (R) and O', the centre of

the Earth (figure 4). We assume that the specular reflection point (S) will be included in that plane. Let us consider the following orthonormal reference systems of coordinates:

- $(O, X, Y, Z)_{R1}$: WGS84 Cartesian system (NIMA , 1997), with O the centre of the Earth. WGS84 has Z polar and X,Y equatorial. The receiver and transmitter coordinates are known in this system. 400
- $(O', x, y)_{R2}$: a local two-dimensional system, obtained by the rotation of the (O, X, Y, Z) system around the Z axis, in such a way that $x_r = 0$, and a translation OO' with O' the center of the osculating sphere. 370
- $(S, x', y')_{R3}$: a local two-dimensional system, obtained by a rotation around the z axis and a r_E translation of the (O', x, y) system in such a way that x' and the local vertical are colinear, and that the system origin coincides with the specular reflection point S. 375

If H is the height of the receiver above the ground, the position of the receiver is:

$$\mathbf{r}_r = \begin{pmatrix} x_r \\ y_r \end{pmatrix}_{R2} = \begin{pmatrix} 0 \\ r_E + H \end{pmatrix}_{R2} \quad (5) \quad 405$$

with r_E the Gaussian radius of curvature at the latitude of the receiver φ_r . 380

The position of the GNSS satellite transmitter considering ε the elevation angle of the satellite (considering zenith angle reckoned from the ellipsoidal normal direction) and τ the angle $\widehat{RTO'}$ is given by: 410

$$\mathbf{r}_t = \begin{pmatrix} x_t \\ y_t \end{pmatrix}_{R2} = \begin{pmatrix} r_t \cos(\varepsilon + \tau) \\ r_t \sin(\varepsilon + \tau) \end{pmatrix}_{R2} \quad (6)$$

Using the trigonometric sine formula in the R-T- O' triangle: 415

$$\frac{\sin(\frac{\pi}{2} + \varepsilon)}{r_t} = \frac{\sin(\tau)}{r_E + H} \quad (7)$$

We finally obtain: 390

$$\begin{pmatrix} x_t \\ y_t \end{pmatrix}_{R2} = \begin{pmatrix} r_t \cos(\varepsilon) \sqrt{1 - \frac{(r_E + H)^2}{r_t^2} \cos^2(\varepsilon)} \\ -(r_E + H) \sin(\varepsilon) \cos(\varepsilon) \\ r_t \sin(\varepsilon) \sqrt{1 - \frac{(r_E + H)^2}{r_t^2} \cos^2(\varepsilon)} \\ -(r_E + H) \cos^2(\varepsilon) \end{pmatrix}_{R2} \quad (8) \quad 420$$

The Snell-Descartes law for reflection can be expressed as the ratios of the coordinates of the receiver and the transmitter in (S, x', y') : 425

$$\frac{x'_t}{y'_t} = \frac{x'_r}{y'_r} \quad (9) \quad 430$$

The coordinates in $R3$ can be derived from the coordinates in $R2$ from:

$$\begin{pmatrix} x' \\ y' \end{pmatrix}_{R3} = \begin{pmatrix} \cos(\gamma) & \sin(\gamma) \\ -\sin(\gamma) & \cos(\gamma) \end{pmatrix}_{R3} \begin{pmatrix} x \\ y \end{pmatrix}_{R2} - \begin{pmatrix} r_e \\ 0 \end{pmatrix}_{R3} \quad (10)$$

where γ is the rotation angle between the two systems (figure 4) . So (9) becomes:

$$\begin{aligned} & 2(x_t x_r - y_t y_r) \sin(\gamma) \cos(\gamma) \\ & - (x_t y_r + y_t x_r) (\cos^2(\gamma) - \sin^2(\gamma)) \\ & - r_E (x_t + x_r) \sin(\gamma) + r_e (y_t + y_r) \cos(\gamma) = 0 \end{aligned} \quad (11)$$

Following (Helm A. , 2008), we proceed to the substitution $t = \tan(\frac{\gamma}{2})$, and (11) becomes:

$$\begin{aligned} & 2(x_t x_r - y_t y_r) \frac{2t}{1+t^2} \frac{1-t^2}{1+t^2} - x_t y_r \left(\frac{1-t^2}{1+t^2} \right)^2 \\ & - \left(\frac{2t}{1+t^2} \right)^2 - r_E \frac{2t}{1+t^2} (x_t + x_r) \\ & + r_E \frac{1-t^2}{1+t^2} (y_t + y_r) = 0 \end{aligned} \quad (12)$$

And finally becomes:

$$c_4 t^4 + c_3 t^3 + c_2 t^2 + c_1 t + c_0 = 0 \quad (13)$$

with:

$$c_0 = (x_t y_r + y_t x_r) - r_E (y_t + y_r) \quad (14)$$

$$c_1 = -4(x_t x_r - y_t y_r) + 2r_E (x_t + x_r) \quad (15)$$

$$c_2 = -6(x_t y_r + y_r x_r) \quad (16)$$

$$c_3 = 4(x_t x_r - y_t y_r) + 2r_E (x_t + x_r) \quad (17)$$

$$c_4 = (x_t y_r + y_t x_r) + r_E (y_t + y_r) \quad (18)$$

Equation (13) is solved to determine the roots of this polynomial using an iterative scheme based on the Newton method (Nocedal J. et al. , 2006).

3.3 Ellipsoid reflection approximation

We consider an ellipsoid corresponding to the WGS84 one extended such as the ellipsoid height of the receiver is equal to the receiver height above the reflecting surface. We define the two normalized anti-incident r_t and scattering r_s vectors. When the Snell-Descartes law is verified, the sum of these two vectors (bisecting vector dr) coincides with the local vertical. The determination of the location of the reflection point is based on iterative process proposed earlier by (Gleason S. et al. , 2009), and enhanced with a dichotomy process. Let us consider three points on the ellipsoid:

- $S1$ the projection of the receiver on the ellipsoid
- $S3$ the projection of the transmitter on the ellipsoid
- $S2$ the projection of the middle of $[S1S3]$ on the ellipsoid

We calculate dr , the correction in direction, considering the location of each the three points:

$$dr(t) = \frac{\mathbf{r}_s(t) - \mathbf{r}_r(t)}{\|\mathbf{r}_s(t) - \mathbf{r}_r(t)\|} + \frac{\mathbf{r}_s(t) - \mathbf{r}_t(t)}{\|\mathbf{r}_s(t) - \mathbf{r}_t(t)\|} \quad (19)_{480}$$

We consider then the direction of the correction dr . If the correction is in the satellite direction, the sign is considered as positive, and negative if the correction is in the receiver direction. If the signs of dr_{S1} and dr_{S2} are different, it means that the specular reflection point is located between $S1$ and $S2$. We thus consider a new iteration with $S1 = S1$, $S3 = S2$ and $S2$ the projection on the ellipsoid of the middle of the new $S1$ and $S3$ points. We thus eliminate the part between the initial $S2$ and $S3$ points. Else if the signs of dr_{S2} and dr_{S3} are different, we consider a new iteration with $S1 = S2$ and $S3 = S3$ (and $S2$ the projection on the ellipsoid of the middle of the new $S1$ and $S3$ points). The iterative process stops when the difference between incident and reflected angle (with respect to the local vertical) is close to zero with a fixed tolerance of 10^{-7}° .

3.4 Ellipsoid reflection approximation combined with a DEM

The two first approaches presented above are well adapted in the case of an isolated receiver, located on the top of a lighthouse, for instance. In most of the cases, the receiver is located on a cliff, a sand dune, or a building overhanging the sea surface or a lake. It can however be really appropriate and necessary to incorporate a Digital Elevation Model (DEM) into the simulations, in order not to only take the mask effects (e.g., a mountain occulting a GNSS satellite) into account, but also to get more accurate and realistic positions of specular reflection points. The method we propose here consists of three steps later detailed in subsections 3.4.1, 3.4.2 and 3.4.3.

1. A "visibility" determination approach to determine if the receiver is in sight of each GNSS satellite.
2. A determination of the specular reflection point position.
3. A "visibility" determination approach to determine if the determined specular point is in sight from both receiver and satellite.

It is important to keep in mind that a DEM gives altitudes above a reference geoid. For consistency purpose, the positions of the receiver and the transmitter, and the DEM grid points have all to be in the same reference system. So it is absolutely mandatory to convert the EGM96 altitudes from the SRTM DEM into WGS84 ellipsoidal heights by adding the geoid undulation interpolated from EGM96.

3.4.1 Visibility of the GNSS satellite from the receiver

This algorithm aims to determine the presence of mask between the receiver and the satellite. The visibility of the satellite and of the receiver, both from the specular point will be checked once the potential specular point position will be found.

Let R , S , and T be the locations of the receiver, the specular point and the satellite/transmitter on the ellipsoid. We interpolate the ellipsoidal heights along the path $[TSR]$ with a step equal to the DEM resolution, with a bivariate cubic or bilinear interpolation. Cubic interpolation is used when the gradient is big, linear interpolation otherwise. Tests show millimetric differences between cubic and linear interpolation for flat zones but can reach 1 m for mountainous areas. We thus obtain a topographic profile from R to T . For each segment of this topographic profile, we check if it intersects the path $[TR]$. If it does, it means that the satellite is not visible from the receiver. If not, we check the next topographic segment, until reaching the end of the path (i.e. T).

3.4.2 Position of the specular point

Once the satellite visibility from the receiver is confirmed, the next step consists in determining the location of the specular reflection point S along the broken line defined as in subsection 3.4.1. In order to simplify the process, we only consider the specular points located into the plane formed by the satellite, the receiver and the center of the Earth. The algorithm is similar to the one used for the ellipsoid approximation and is based on a dichotomous iterative process.

The segments formed by the points of the 2D DEM (see figure 5) are all considered susceptible to contain a specular reflection point. For each of this segment the sign of the correction to apply at each of the two extremities of the segment is checked following the same principle that for the ellipsoid approximation (see subsection 3.3), but with a local vertical component defined as the normal of the considered segment. If the signs are equal, no reflection is possible on this segment. Otherwise, we apply the dichotomous iterative method presented in subsection 3.3 until convergence with respect to the tolerance parameter (fixed to 10^{-7}°).

3.4.3 Visibility of the determined specular reflection point from the satellite and the receiver

Once the position of the specular reflection point is determined, we check if it is visible from the satellite and the receiver thanks to the algorithm presented in subsection 3.4.1.

3.5 Corrections of the angular refraction due to the troposphere

Our goal is to determine the location of the reflection point. Only the angular refraction will be considered. The reflected minus direct range is left as future work. In or-

der to correct the anisotropy of propagation of radio waves used by the GNSS satellites, we use AMF calculated from the 3-hourly delayed cut-off in model levels computed by the ECMWF (European Centre for Medium-Range Weather Forecasts). AMF tropospheric corrections were computed following (Gégout P. et al. , 2011) and provided by GRGS for this study. Given the geometric specificities of the specular reflection point, two paths have to be checked for propagation error: the first one from the satellite to the surface, and the second from the surface to the receiver. The main steps of the process are the following:

- 1 We consider the position of the specular reflection point without any correction of the angular refraction;
- 2 We calculate the corrections to apply to this specular point knowing the incident and reflecting angle corresponding to the considered reflection point. We thus obtain a corrected incident angle. Figure 6 shows the correction to apply as a function of the elevation angle;
- 3 From the corrected incident angle, a corrected position of the specular point is calculated, making the reflecting angle being equal to the corrected incident angle;
- 4 With the new position of the specular point and to reach a better accuracy of the point position, a second iteration is performed computing the corrections to apply to this new incident angle.

3.5.1 Correction of the satellite-surface path

First and foremost, the parallax problem for the wave emitted by a known GNSS satellite is solved. At first sight, the position of the specular reflection point calculated without any correction of the angular refraction is considered, given by the algorithm approximating the Earth's shape as a sphere given in paragraph 3.2. We use here AMF calculated from the projection of the receiver on the surface, considering that the AMF planimetric variations are negligible for ground-based observations (i.e. we consider that we can use the same AMF for every specular reflection points, which is valid only if the specular reflection points are less than few tens of km from the receiver and that the specular points lie on an equal-height surface). We thus obtain the corrected incident angle of the incident wave. Considering the law of Snell-Descartes, the reflecting angle must be equal to the corrected incident angle, for the specular reflection point position.

3.5.2 Correction of the surface-receiver path

The aim here is to adjust the surface-receiver path to accommodate for the consequences of angular refraction. With the corrected reflection angle, we can deduce the corrected geometric distance between the reflection point and the receiver, using this time AMF calculated from the receiver, assuming that the AMF altimetric variations are non-negligible (i.e. the

part of the troposphere corresponding to the receiver height will have a non-negligible impact on the AMF). Considering the corrected geometric distance between the reflection point and the receiver, the corrected position of the reflection point is obviously determined. It is indeed obtained as the intersection of a circle whose radius is equal to the correct geometric distance, with the surface of the Earth assimilated as a sphere, an ellipsoid, or with a DEM, depending on which approximation of the Earth is taken into account.

The whole process is iterated a second time to reach a better accuracy of the reflection point location. In fact, the first corrections were not perfectly exact since computed from an initially false reflection point location, and the second iteration brings the point closer to the true location. More iterations are useless (corrections to apply are not significant). Figure 6 shows an example of elevation corrections to apply as a function of the satellite elevations. This figure has been computed from simulations done on a receiver placed on the Geneva Lake shore (46°24'30N" ; 6°43'6"E ; 471m); see subsection 4.1 page 7.

3.6 Footprint size of the reflected signal

The power of the received signal is mostly due to coherent reflection and most of scattering is coming from the first Fresnel zone (Beckmann P. and Spizzichino A. , 1987). The first Fresnel zone can be described as an ellipse of semi-minor axis (r_a) and semi-major axis (r_b) equal to (Larson K.M. and Nievinski F.G. , 2013):

$$r_b = \sqrt{\frac{\lambda h}{\sin(\epsilon')} + \left(\frac{\lambda}{2\sin(\epsilon')}\right)^2} \quad (20)$$

$$r_a = \frac{b}{\sin(\epsilon')} \quad (21)$$

With λ the wave length (m), h the receiver height (m) and ϵ' the satellite elevation seen from the specular reflection point (rad) (i.e. corresponds to the reflection angle).

4 Simulator performance and results

4.1 Simulation study cases

Simulations and tests of parameters have been performed on two main sites:

- the Cordouan lighthouse (45°35'11"N ; 1°10'24"W), in the Gironde Estuary, France. This lighthouse is about 60-m high, and it is surrounded by the sea.
- the shore of the Geneva lake (46°24'30N";6°43'6"E). This site is hidden by mountains in the South (orthometric altitude up to 2000 m), and overlooks the lake in the North (orthometric altitude of 370 m).

For both sites, precise GPS and GLONASS ephemeris at a 15-minute time-sampling come from IGS standard products (known as "SP3 orbit").

4.2 Validation of the surface models

Simulations were performed in the case of the Geneva Lake shore, for a 24-hour experiment, on the 4th october 2012.

4.2.1 Cross-validation between sphere and ellipsoid approximations

Local sphere and ellipsoid approximation algorithms have been compared by putting the ellipsoid semi-major and minor axis equal to the sphere radius. Planimetric and altimetric differences between both are below 6.10^{-5} m for a receiver height above reflecting surface between 5 and 300 m and are then negligible. The two algorithms we compare are completely different: the first is analytical and the second is based on an iterative scheme and both results are very similar, which confirms their validity.

4.2.2 Cross-validation between ellipsoid approximation and DEM integration

The algorithm integrating a DEM has been compared to the ellipsoid approximation algorithm by putting a flat DEM as input (i.e. a DEM with orthometric altitude equal to the geoid undulation). Results for satellite elevation angles above 5° are presented in table 1.

As we can see in table 1, planimetric and altimetric mean differences are subcentimetric for a 5 and 50 m receiver height and centimetric for a 300 m receiver height. However, some punctual planimetric differences reach 20 cm in the worst conditions (reflection occurring at 3449 m from the receiver corresponding to a satellite with a low elevation angle), which can be explained with the chosen tolerance parameters but mainly because due to the DEM resolution, the algorithm taking a DEM into account approximating the ellipsoid as a broken straight line, causing inaccuracies. For a 50 m receiver height, planimetric differences are below 4 cm (reflections occurring until 557 m from the receiver). With regards to the altimetric differences, even for reflections occurring far from the receiver, the differences are negligible (submillimetric).

4.3 Results

4.3.1 Cordouan lighthouse

Outputs

Examples of outputs for simulations in the case of the Cordouan lighthouse are presented in figure 7 and figure 8. These simulations were performed considering the sphere approximation algorithm and a 15 minute time-step.

Figure 9 (a) shows the variation of the distance between reflected points and receiver, as a function of the satellite elevation angle, and for several receiver heights above the reflecting surface and figure 9 (b) shows the variation of the area of the first Fresnel surface. Such figures have been produced by performing simulations on the Cordouan lighthouse and varying the receiver height above the reflecting surface. The map of the reflected points obtained for a big receiver height above the reflecting surface will in fact be the same as the one obtained for a smaller receiver height, but more stretched. Henceforth, the higher the receiver height, the bigger the "measurable" area, but the less dense the ground coverage of the data (less reflection points per surface unit).

Study case: the influence of tides

As an illustration of a possible application of the simulator, tide influence on the position of the specular reflection points was assessed. Simulations at the Cordouan lighthouse were achieved integrating ocean tide from the tide gauge in Royan, by time-varying the receiver height above the sea surface in order to simulate the tide. The vertical visibility mask was set to 10-90°, in order to avoid the weaker accuracy of determination of the specular reflection points positions for satellites with low elevation angle, as highlighted in subsection 4.3.2. By comparing the results with simulations made with a fixed-receiver height of 60 m above the sea surface, it appears that the 3D offsets reach values higher than 12 m for the maximum tide values (< 3 m) (figure 10). We can expect even higher discrepancies by taking into account satellites whose elevation angle would be lower than 10°.

4.3.2 Geneva Lake

Three sets of simulation have been performed in the case of the Geneva Lake shore, for a 24-hour experiment, on the 4th october 2012:

- first configuration considering a receiver height of 5 m above lake level
- second configuration considering a receiver height of 50 m above lake level
- third configuration considering a receiver height of 300 m above lake level as for an airborne experiment (e.g. hovering helicopter).

Each series has been computed using the four algorithms of determination of the reflection points (local planimetric approximation, local osculating sphere approximation, ellipsoid approximation and the algorithm taking a DEM into account). Results are presented on figures 11 to 14 and in table 2. They show the distances between the specular points and the receiver (arc lengths), and the differences between the positions given by each algorithm.

Influence of the receiver height above the reflecting surface

765

It appears that both planimetric and altimetric differences between the method used increase with the receiver height above the reflecting surface. This is explainable by the fact that the higher the receiver is, the farther the reflection points will be from the receiver, and the bigger the impact of the Earth approximation will be. For a 5-m receiver height, reflection occurs up to approximately 60 m from the receiver, whereas for a 300-m receiver height, it occurs up to 3400 m (6700 m when integrating the DEM). It means that, in the second case, reflections occur in the mountains in the south of the receiver hence big differences between the sphere algorithm and the algorithm taking the DEM into account. For a 5 m receiver height above the reflecting surface and considering satellites with elevation angles above 5° , mean planimetric differences are below 1.3 cm between the osculating sphere and ellipsoid approximation and below 1.3 mm between the sphere and plane approximations. With regards to the comparison between the plane and ellipsoid approximations, the mean planimetric differences are about 1.4 cm. Altimetric differences are negligible for all of them.

With a 50 m receiver height above the reflecting surface, mean planimetric (resp. altimetric) differences reach 14 cm (resp. < 1 mm) between the sphere and ellipsoid approximations, 6.2 cm (resp. 2 mm) between the sphere and plane approximations, and 15 cm (resp. 2 mm) between the plane and ellipsoid approximations.

With a 300 m receiver height above the reflecting surface, mean planimetric (resp. altimetric) differences reach 83 cm (resp. < 1 mm) between the sphere and ellipsoid approximations, 2.19 m (resp. 8 cm) between the sphere and plane approximations, and 2.35 m (resp. 8 cm) between the plane and ellipsoid approximations.

It is worth noticing that the sphere approximation is closer to the plane than the ellipsoid approximation when reflections occur not too far from the receiver (below 560 m), and conversely if reflection occurs far from the receiver.

Influence of the satellite elevation angle

800

Secondly, by plotting the differences as functions of the satellite elevation angles, we can observe that the lapses between the different algorithms vary in an inversely proportional way than the satellite elevation angle (and so, proportionally to the point distance from the receiver). The lower the satellite elevation angle is, the farther the specular reflection points from the receiver and the larger the impact of the Earth approximation is. The choice of the algorithm used to perform the simulations becomes thus really important for the farthest reflection points (i.e., for low satellite elevation angles, and high receiver height above the reflecting surface). For example, mean planimetric differences between the local sphere and ellipsoid approximation with a 50 m receiver height are about

14 cm considering satellites with elevation angles above 5° and are about 9 cm considering only satellites with elevation angles above 10° . With a 300 m receiver height above the reflecting surface, mean planimetric difference between sphere and ellipsoid approximations is about 83 cm for satellites with elevation angle above 5° and 54 cm for a minimum elevation angle set to 10° .

Influence of the DEM integration

For continental surfaces the full integration of the DEM in the simulation play a crucial role for a good calculation of the reflection points. The integration of a DEM leads to the suppression of 245 specular reflection points out of the 905 points determined during 24 hours the 4th of October 2012 with the sphere approximation algorithm (figure 15). These 245 points came from a wave emitted by a satellite hidden by a mountain located in the south part of the area. In the north part, any reflection point is valid when taking a DEM into account, because in that direction, the topography is flat over the Geneva Lake, and so, satellites are all visible and reflections are possible. Moreover, the points positions have been rectified while taking a DEM into account, since the others algorithms consider that reflections occur (in first approximation) in a plane around the projection of the receiver and without integrating the problem of the presence of topography.

Comparison between the different models of the Earth surface

For a 5-m receiver height, and for satellite elevations greater than 10° , the mean planimetric difference between the ellipsoid and the sphere algorithm is equal to 1.4 cm whereas for a 300-m receiver height it is equal to 83 cm. The approximation done by considering the Earth as a sphere, an ellipsoid or a plane does not really affect the precision of the specular reflection point determination when reflections do not occur too far from the receiver i.e. for low receiver height and high satellite elevation. For example, if we consider that we need an uncertainty on the determination of the specular reflection position below 20 cm, the choice of the approximation of the Earth shape will have no influence if reflections occur until 125 m approximately (figure 14 (b)). In order to get reflections below 125 m from the receiver, considering satellites with elevation angle above 5° , the receiver height above the reflecting surface should not exceed 25-30 m (figure 9 (a)), which would corresponds to a first Fresnel zone area between 300 and 400 m^2 .

Concerning the algorithm taking the DEM into account, the differences obtained with respect to the sphere or ellipsoid algorithms are quite big even if the specular reflection point is close enough from the receiver. For instance, the mean planimetric (resp. altimetric) difference between the ellipsoid algorithm and the one integrating the DEM is equal

815 to 70 cm (resp. 18 cm) for a 5-m receiver height, and is equal
to 78 m (resp. 25 m) for a 300-m receiver height, and with 865
satellite elevation angle above 5° . It is worth noticing that
these differences will highly depend on the flatness of the
considered area.

820 Angular refraction due to the troposphere

Given the geometric configuration of the satellite, the reflection point and the receiver, the same elevation angle correction will have a different effect according to the receiver height above the reflecting surface. It turns out that considering a same satellite at a given time, the corresponding reflection point will be farther for a big receiver height above the reflecting surface than for a smaller one. Consequently, for the same elevation angle correction, the resulting correction of the reflection point position will be higher in the first case than in the second one. Figure 16 shows the differences, in terms of geometric distances, between the reflection points 880 positions obtained with and without correcting the angular refraction and for different receiver heights. It appears that for low satellite elevation angle and high receiver height, the angular refraction has a non-negligible influence on the specular point positions (116 m (resp. 32 cm) for a 300-m receiver height and satellites elevation angle lower than 10°). 885

5 Conclusions

In this paper, we presented a simulator based on real GNSS 890 satellites ephemeris, as a user-friendly tool, for modelling the trajectories of GNSS electromagnetic waves that are reflected on the surface of the Earth and therefore preparing GNSS-R campaigns more efficiently. The originality of this simulator remains mainly in the integration of a DEM and of the 895 correction of the angular refraction due to the troposphere. The results of simulations led us to a better understanding of the influence of some parameters on the reflection geometry, namely by quantifying the impact of the receiver height but also the influence of the satellite elevations, the natural topography (DEM), and the troposphere perturbation. 900

The different simulations realized near to quite rugged topography lead us to the following conclusions:

- the DEM integration is really important for mountainous areas: planimetric differences as arc length (resp. altimetric differences as ellipsoid height) can reach 5.4 km (resp. 1.0 km) for a 300-m receiver height, considering satellite with elevation angle greater than 5° . 905
- differences between sphere and ellipsoid approximations are negligible for specular reflection points close from the receiver (closer than 50-60 m) i.e. small receiver height and/or high satellites elevations. For instance, planimetric differences are smaller than 11 cm for a 5-m receiver-height, considering satellites with el- 910

evation angle greater than 10° . Altimetric differences are negligible.

- sphere and plane approximations show really small differences in the vicinity of the receiver (smaller differences than between the sphere and ellipsoid approximations): maximum differences are about 1.5 cm (resp. 3 mm) with a 5 m receiver height (i.e. reflections occurring until 56 m from the receiver).
- with regards to the plane and ellipsoid approximations, differences are bigger than between the plane and sphere approximations when reflections occur closer than 550 m from the receiver. For farther reflections, differences between plane and ellipsoid become smaller than between plane and sphere.
- the angular refraction due to troposphere can be negligible with regards to the position of the specular reflection point when the receiver height is below 5 m, but is absolutely mandatory otherwise, particularly for satellites with low elevation angle where the correction to apply is exponential.

As a final remark, it is worth reminding that the farther the specular reflection point from the receiver is, the more important the influence of the different error sources will be: Earth approximation, DEM integration, angular refraction. The farthest specular reflection points will be obtained for high receiver height and low satellite elevation. This simulator is likely to be of great help for the preparation of *in situ* experiments involving the GNSS-R technique. Further developments of the simulator will be soon implemented, such as receiver installed on a moving platform in order to map the area covered by airborne GNSS-R measurements campaigns and on-board a LEO satellite.

Acknowledgements. This work was funded by CNES in the framework of the TOSCA project “Hydrologie, Océanographie par Réflectométrie GNSS (HORG)” and by the RTRA STAE foundation in the framework of the “Potentialités de la Réflectométrie GNSS In Situ et Mobile (PRISM)” project. Nicolas Roussel is supported by a PhD granted from the French Ministère de l’Enseignement Supérieur et de la Recherche (MESR).

References

- Beckmann P., Spizzichino A.: Scattering of Electromagnetic Waves from Rough Surfaces. Artech House Publishers. 1987. ISBN 0-89006-238-2.
- Billich A.L.: Improving the Precision and Accuracy of Geodetic GPS: Applications to Multipath and Seismology. PhD. B.S., University of Texas at Austin. M.S., University of Colorado. 2004.
- Boehm J., Niell A., Tregoning P., Schuh H.: Global Mapping Function (GMF): A new empirical mapping function based on numerical weather model data. Geophysical Research Letters. DOI: 10.1029/2005GL025546. Volume 33, Issue 7, April 2006

- Boehm J., Werl B., Schuh H.: Troposphere mapping functions for GPS and very long baseline interferometry from European Centre for Medium-Range Weather Forecasts operational analysis data. *Journal of Geophysical Research: Solid Earth* 111(B2), doi:10.1029/2005JB003629, 2006.
- Cardellach E., Fabra F., Rius A., Pettinato S., Daddio S.: Characterization of Dry-snow Sub-structure using GNSS Reflected Signals, *Remote Sensing Environment*, 124, pp. 122-134, 2012.
- Chen G., Herring T.: Effects of atmospheric azimuthal asymmetry on the analysis of space geodetic data. *Journal of Geophysical Research: Solid Earth*. DOI: 10.1029/97JB01739. Volume 102, Issue B9, pages 20489–20502, 10 September 1997.
- Gégout P., Biancale R., Soudarin L.: Adaptive Mapping Functions to the azimuthal anisotropy of the neutral atmosphere. *J. Geodesy.*, 85, 661-667, 2011.
- Gleason S.: Remote Sensing of Ocean, Ice and Land Surfaces Using Bistatically Scattered GNSS Signals From Low Earth Orbit. Thesis (Ph.D.), University of Surrey, 2006.
- Gleason S., Lowe S. Zavorotny V.: Remote sensing using bistatic GNSS reflections. *GNSS applications and methods*, 399-436, 2009.
- Helm A.: Ground based GPS altimetry with the L1 openGPS receiver using carrier phase-delay observations of reflected GPS signals. Thesis (Ph.D.), Deutsches GeoForschungsZentrum (GFZ), 164 pp, 2008.
- Hobiger T., Ichikawa R., Takasu T., Koyama Y., Kondo T.: Ray-traced troposphere slant delays for precise point positioning. *Earth Planets Space*, 60, e1–e4, 2008.
- Jarvis J., Reuter H., Nelson A., Guevara E.: Hole-filled SRTM for the globe. CGIAR-CSI SRTM 90 m Database, Version 4. CGIAR Consort. for Spatial Inf., 2008.
- Katzberg S., Torres O., Grant M.S., Masters D.: Utilizing calibrated GPS reflected signals to estimate soil reflectivity and dielectric constant: results from SMEX02. *Remote Sensing of Environment* 100 (1), 17-28, 2006.
- Komjathy A., Zavorotny V., Axelrad P., Born G., Garrison J.: GPS signal scattering from sea surface. Wind speed retrieval using experimental data and theoretical model. *Remote Sensing of Environment* 73, 162–174, 2000.
- Kostelecky J., Klokocnik J., Wagner C.A.: Geometry and accuracy of reflecting points in bistatic satellite altimetry. *J Geod* (2005) 79: 421-430. DOI: 10.1007/s00190-005-0485-7, 2005.
- Lagler K., Schindelegger M., Boehm J., Krsn H., Nilsson T.: GPT2: Empirical slant delay model for radio space geodetic techniques. *Geophysical Research Letters* 40(6):1069–1073, doi:10.1002/grl.50288, 2013.
- Larson K.M., Nievinski F.G.: GPS snow sensing: results from the EarthScope Plate Boundary Observatory. *GPS Solut.* 17:41-52, DOI 10.1007/s10291-012-0259-7, 2013.
- Löfgren J.S., Haas R., Johansson J.: High-rate local sea level monitoring with a GNSS-based tide gauge. *IGARSS 2010*, Page range: 3616-3619, DOI: 10.1109/IGARSS.2010.5652888, 2010.
- Löfgren J.S., Rüdiger H. Scherneck H.G.: Sea-Level analysis using 100 days of reflected GNSS signals. *Proceedings of the 3rd International Colloquium - Scientific and Fundamental Aspects of the Galileo Programme*, 31 August - 2 September 2011, Copenhagen, Denmark, (WPP 326) pp. 5, 2011.
- Lowe S.T. Zuffada C., Chao Y., Kroger P., Young L.E., LaBrecque J.L.: 5-cm-Precision aircraft ocean altimetry using GPS reflections, *GEOPHYSICAL RESEARCH LETTERS*, VOL. 29, NO. 10, 1375, doi: 10.1029/2002GL014759, 2002.
- Marini J.W.: Correction of satellite tracking data for an arbitrary tropospheric profile. *Radio Sci* 7(2):223-231. doi:10.1029/RS007i002p00223, 1972.
- Martin-Neira M.: A passive reflectometry and interferometry system (PARIS): Application to ocean altimetry. *ESA J-EUR SPACE AGEN*, Vol. 17, 331-355, 1993.
- Nafisi, V., Urquhart L., Santos M.C., Nievinski F.G., Bohm J., Wijaya D.D., Schuh H., Ardalan A.A., Hobiger T., Ichikawa R., Zus F., Wickert J., Gégout P.: Comparison of Ray-Tracing Packages for Troposphere Delays. *Geoscience and Remote Sensing*. Volume 50 Issue 2. 2012, Page range: 469 - 481, DOI: 10.1109/TGRS.2011.2160952.
- NASA and NIMA: The Development of the Joint NASA GSFC and the National Imagery and Mapping Agency (NIMA) Geopotential Model EGM96. *NASA/TP-1998-206861*. 1998.
- Niell A.: Preliminary evaluation of atmospheric mapping functions based on numerical weather models. A.E. Niell. *Proceedings of the First COST Action 716 Workshop Towards Operational GPS Meteorology and the Second Network Workshop of the International GPS Service (IGS)*. Volume 26, Issues 6–8, 2001, Pages 475–480
- Nievinski F.G., Santos M.C.: Ray-tracing options to mitigate the neutral atmosphere delay in GPS”. *Geomatica*, Vol. 64, No. 2, pp. 191-207. Available at: <http://bit.ly/1jh4sas>.
- NIMA: National Imagery and Mapping Agency: Departement of Defense World Geodetic System 1984. NIMA Stock No. DMATR83502WGS84. NSN 7643-01-402-0347. 1997.
- Nocedal J., Wright S.J.: *Numerical Optimization*, Springer. ISBN 978-0-387-30303-1, 2006, Place of publication: USA (TB/HAM).
- Rius A., Aparicio J.M., Cardellach E., Martin-Neira M., Chapron B.: Sea surface state measured using GPS reflected signals. *Geophysical Research Letters* 29 (23), doi:10.1029/2002GL015524, 2002.
- Rius A., Noque’s-Correig O., Ribo S., Cardellach E., Oliveras S., Valencia E., Park H., Tarongi J.M., Camps A., Van Der Marel H., Van Bree R., Altena B., Martin-Neira M.: Altimetry with GNSS-R interferometry: first proof of concept Experiment, *GPS Solutions*(16), 231-241, DOI 10.1007/s10291-011-0225-9, 2012.
- Rodriguez E., Morris C.S., Belz J.E., Chapin E.C., Martin J.M., Daffer W., Hensley S.: An assessment of the SRTM topographic products. *Technical Report D-31639, JPL/NASA*, 2005.
- Rodriguez-Alvarez N., Bosch-Lluis X., Camps A., Vall-Llossera M, Valencia E., Marchan-Hernandez J.F., Ramos-Perez I.: Soil moisture retrieval using GNSS-R techniques: Experimental results over a bare soil field. *IEEE Trans. Geosci. Remote Sens.*, vol. 47, no. 11, pp. 3616–3624, 2009.
- Rodriguez-Alvarez N., Camps A., Vall-Llossera M, Bosch-Lluis X., Monerris A., Ramos-Perez I. Valencia E., Marchan-Hernandez J.F., Martinez-Fernandez J., Baroncini-Turricchia G., Pérez-Gutiérrez C., Sanchez N.: Land Geophysical Parameters Retrieval Using the Interference Pattern GNSS-R Technique, *IEEE TRANSACTIONS ON GEOSCIENCE AND REMOTE SENSING*, VOL. 49, NO. 1, 71-84, 2011.
- Ruffini G., Soulat F., Caparrini M., Germain O., Martin-Neira M.: The Eddy Experiment: Accurate GNSS-R ocean altimetry from low altitude aircraft, *Geophys. Res. Lett.*, 31, L12306,

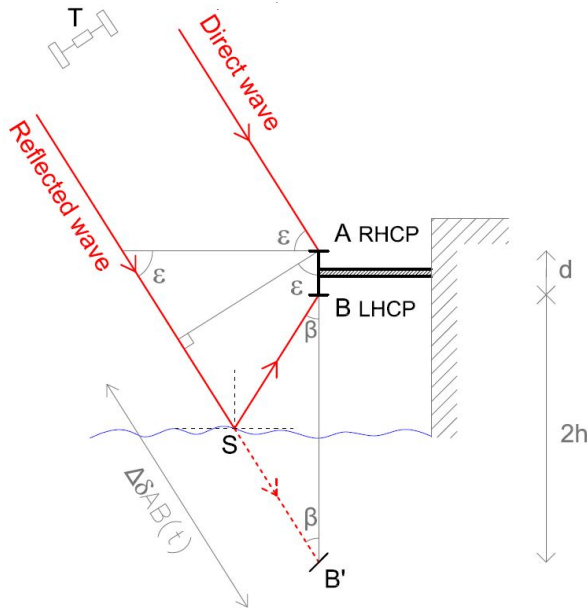


Fig. 1. Principle of GNSS-Reflectometry.

T : satellite/transmitter, S : specular reflection point, ϵ : satellite elevation, $\Delta \delta AB(t)$: additional path covered by the reflected wave, d : interdistance between the LHCP and RHCP antennas and h : height of the receiver above the reflecting surface.

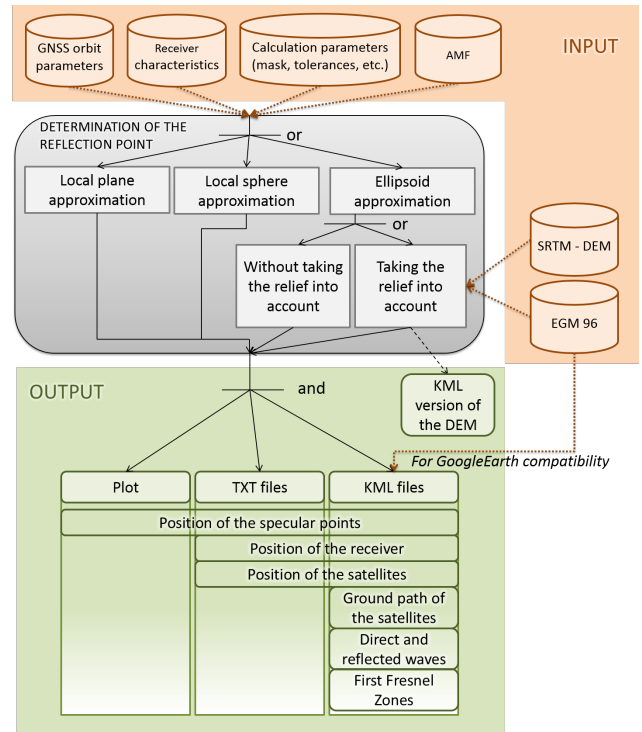


Fig. 2. Data flow chart of the simulator.

Three main blocks: an input block which contains the different elements mandatory for the processing; a processing block where the user can choose which algorithm to be used, and an output block containing the different results of the simulation, namely KML files to be opened with Google Earth.

doi:10.1029/2004GL019994. 2004.

Semmling A.M, Beyerle G., Stosius R., Dick G., Wickert J., Fabra F., Cardellach E., Ribo S., Rius A., Helm A., Yudanov S.B., d’Addio S.: Detection of Arctic Ocean tides using interferometric GNSS-R signals. *Geophysical Research Letters*, 38, L04103 DOI 10.1029/2010GL046005. 2011.

Soulat F., Caparrini M., Germain O., Lopez-Dekker P., Taani M., and Ruffini G.: Sea state monitoring using coastal GNSS-R, *Geophys. Res. Lett.*, 31, L21303, doi 10.1029/2004GL020680. 2004.

Treuhaft P., Lowe S., Zuffada C., Chao Y.: 2-cm GPS altimetry over Crater Lake, *GEOPHYSICAL RESEARCH LETTERS*, VOL. 28, NO. 23, PAGES 4343-4436. 2004.

Wagner C., Klokocnik C.: The value of ocean reflections of GPS signals to enhance satellite altimetry: data distribution and error analysis. *Journal of Geodesy* (2003) 77: 128-138. DOI: 10.1007/s00190-002-0307-0, 2003.

Zavorotny A.U., Voronovich A.G.: Scattering of GPS signals from the ocean with wind remote sensing application. *IEEE Transactions on Geosciences and Remote Sensing* 38 (2), 951–964, 2000.

Zus F., Bender M., Deng Z., Dick G., Heise S., Shang-Guan M., Wickert J.: A methodology to compute GPS slant total delays in a numerical weather model. *Radio Science*. DOI: 10.1029/2011RS004853. Volume 47, Issue 2, April 2012.

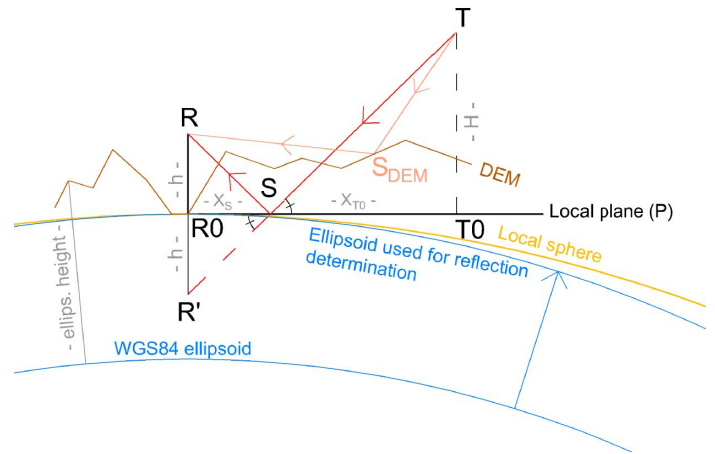


Fig. 3. Determination of the specular reflection point in a local plane approximation and local difference with the sphere and ellipsoid approximations and DEM integration.

S : specular reflection point position. R : receiver position. T : transmitter/satellite position. h : height of the receiver above the ground surface.

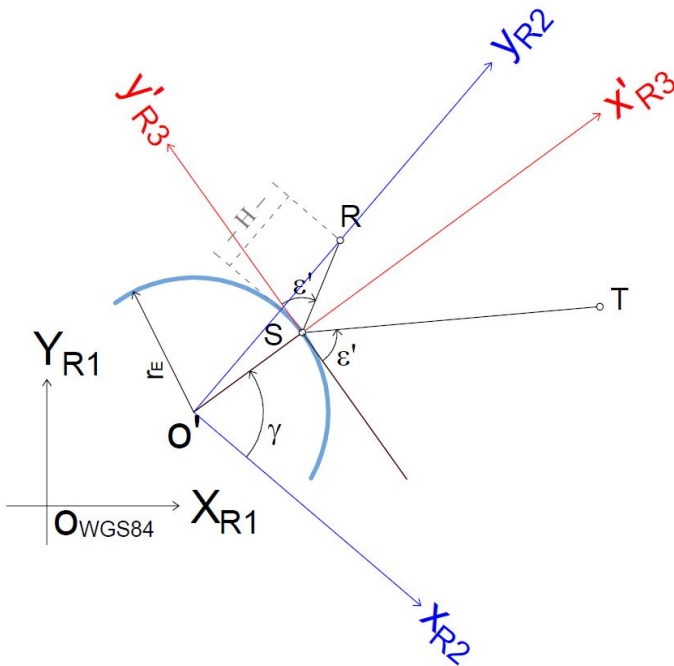


Fig. 4. Local osculating sphere approximation : the three different reference systems of coordinates.

S: specular reflection point position. R: receiver position. T: transmitter/satellite position. $(0, X, Y, Z)_{R1}$: WGS84 Cartesian system. $(0', x, y)_{R2}$: local two-dimensional system, centred on the center of the osculating sphere, obtained by the rotation of the R1 system around the Z axis, in such a way that $x_r = 0$. $(S, x', y')_{R3}$: a local two-dimensional system, obtained by a rotation around the z axis and a r_R translation of the R2 system in such a way that x' and the local vertical are colinear and that the system origin coincides with the specular reflection point S.

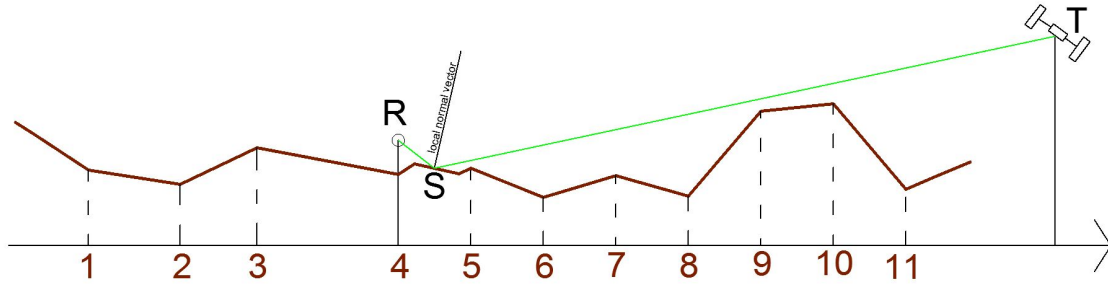


Fig. 5. Determination of the specular reflection point integrating a DEM

S: specular reflection point position. R: receiver position. T: transmitter/satellite position. A dichotomous process is applied for each topographic segment of the DEM to find if there is a point where the bisecting angle (equal to the sum of the anti-incident and scattering vectors) is colinear with the local normal vector.

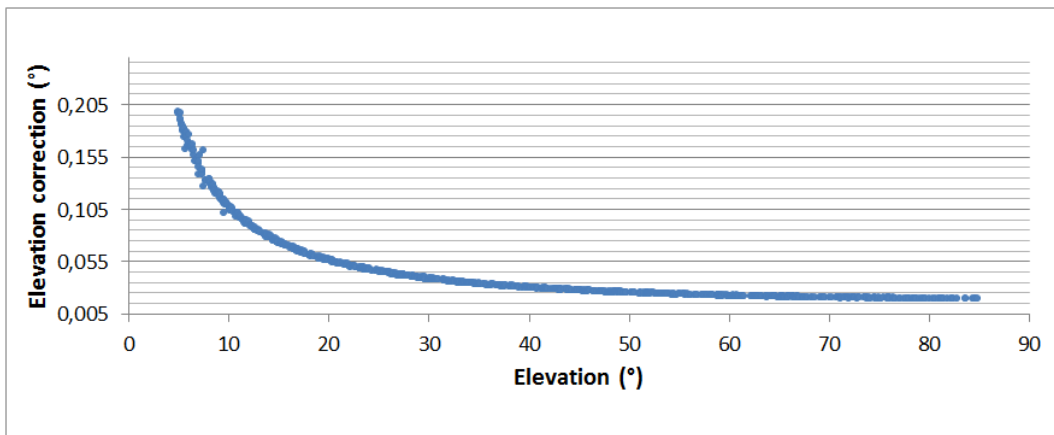


Fig. 6. Effect of the neutral atmosphere on the elevation angle.

An exponential correction must be made for satellites with low elevation angle.

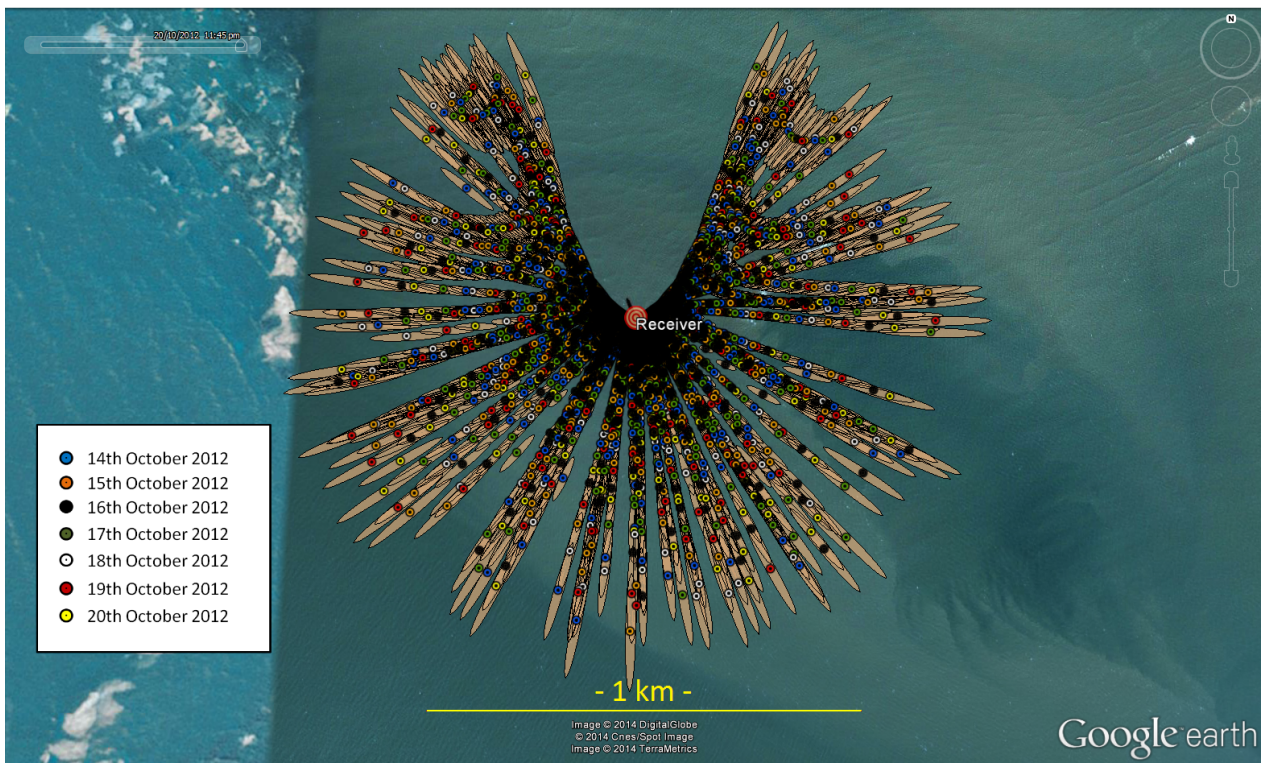


Fig. 7. Positions of the specular reflection points and first Fresnel zones for one week of simulation on the Cordouan lighthouse with a 15-minute sampling rate (i.e. satellites positions actualized each 15 minutes).

Only GPS satellites with elevation angle greater than 5° have been considered. Note the gap in the North direction.

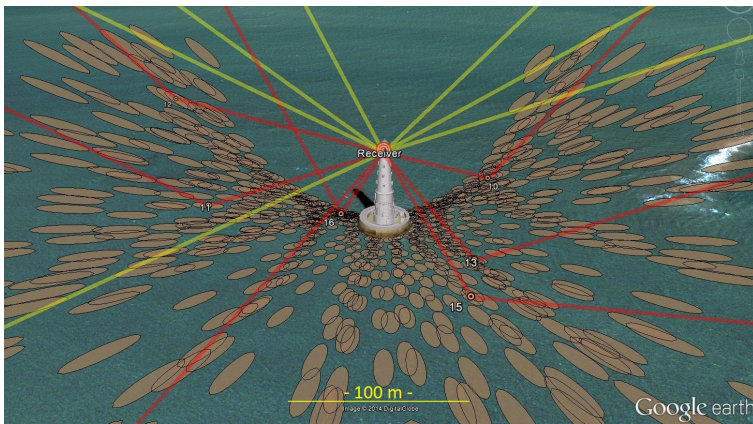


Fig. 8. First Fresnel zones and some direct and reflected waves display: 24h Cordouan lighthouse simulation with GPS constellation.

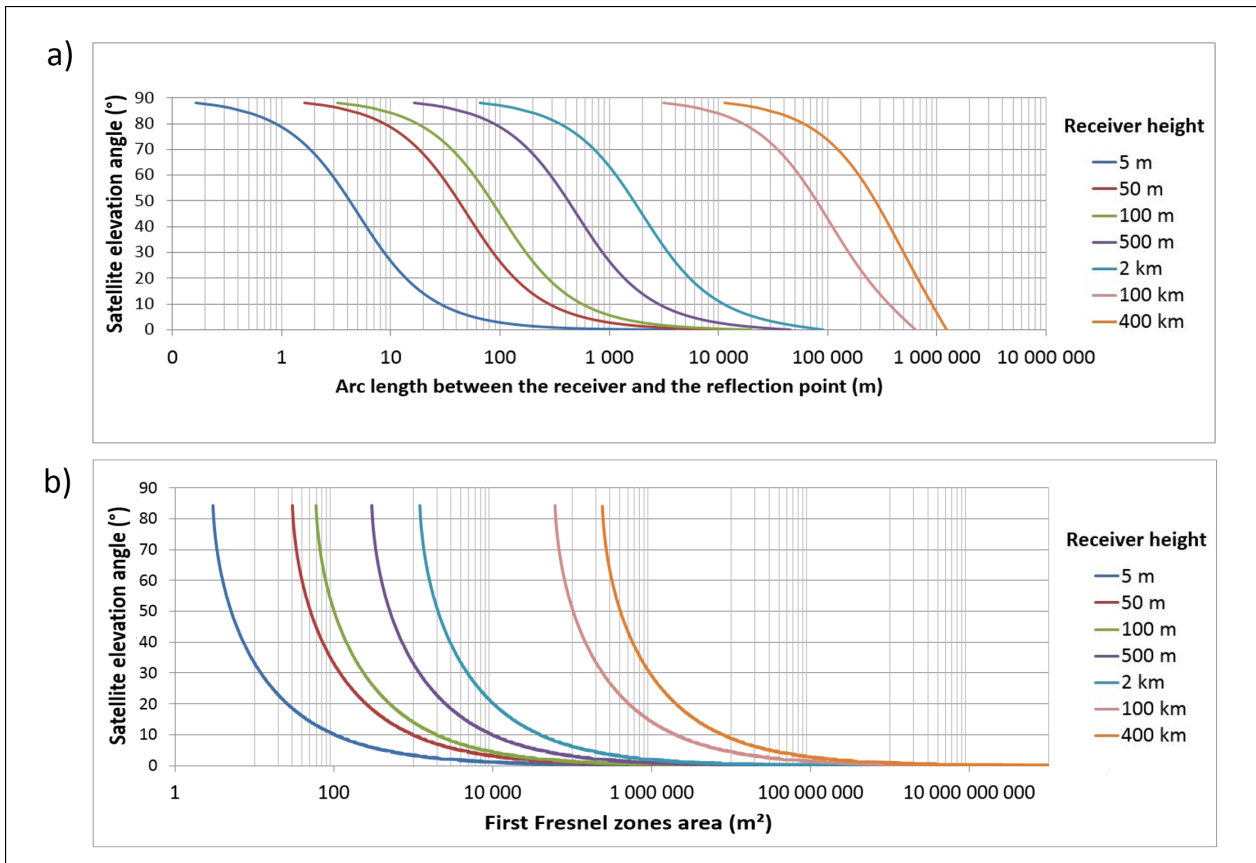


Fig. 9. Variation of the distance between the receiver and the specular reflection point (a) and first Fresnel zones area (b) as a function of the satellite elevation angle, for different receiver heights.

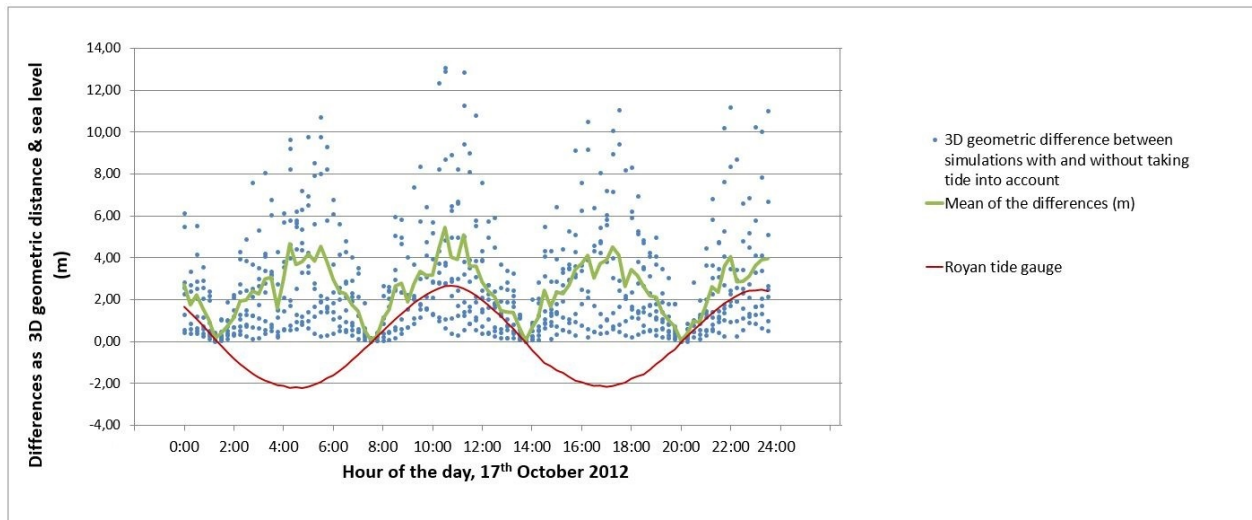


Fig. 10. Assessment of the tide influence.

The impact of the tide on the size of the reflecting area is non-negligible (decametric 3D-differences), and it is worth noticing that the gaps would have been even bigger integrating satellites with low elevation angle. Note also that the periodic variations of the 3D differences are only linked to the tide, since the mean of the satellite elevation angles does not show periodic variations during the day of simulation ($43.3 \pm 3.5^\circ$ over the period).

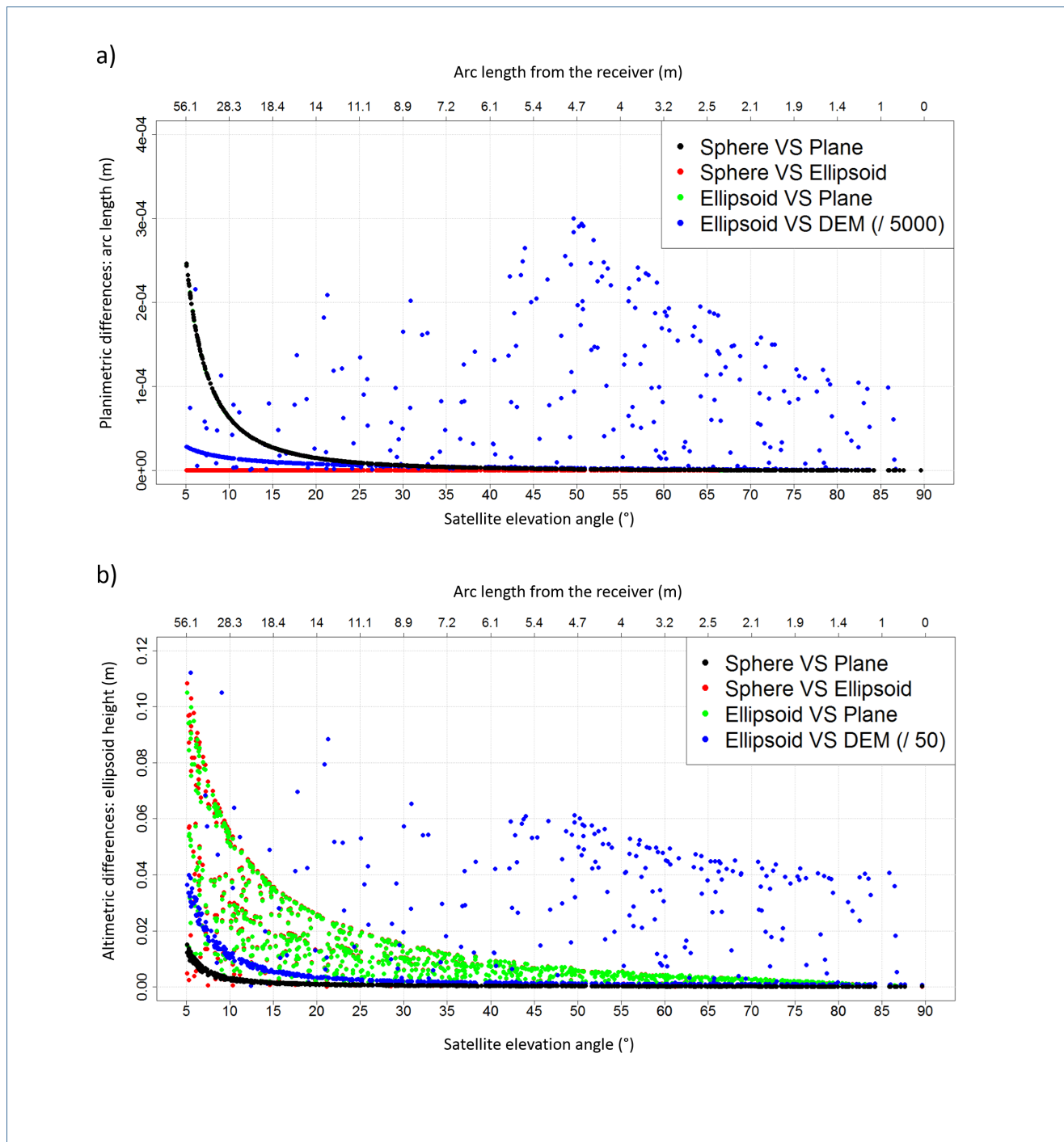


Fig. 11. Planimetric and altimetric differences between the specular reflection points obtained with the different algorithm. Receiver height above the reflecting surface: 5 m.

a) Planimetric differences as arc length (m). b) Altimetric differences as ellipsoid height (m).

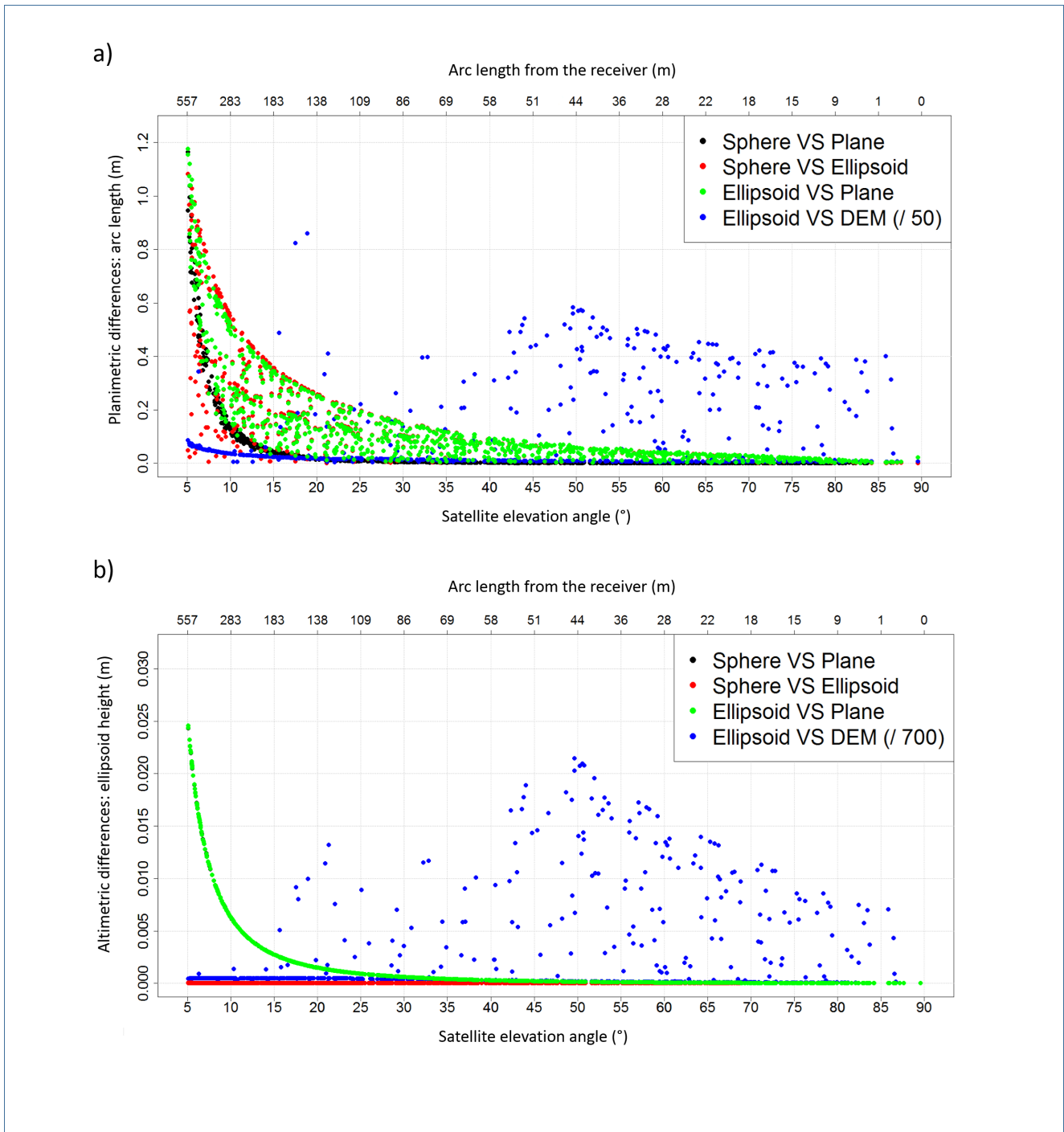


Fig. 12. Planimetric and altimetric differences between the specular reflection points obtained with the different algorithm. Receiver height above the reflecting surface: 50 m.

a) Planimetric differences as arc length (m). b) Altimetric differences as ellipsoid height (m).

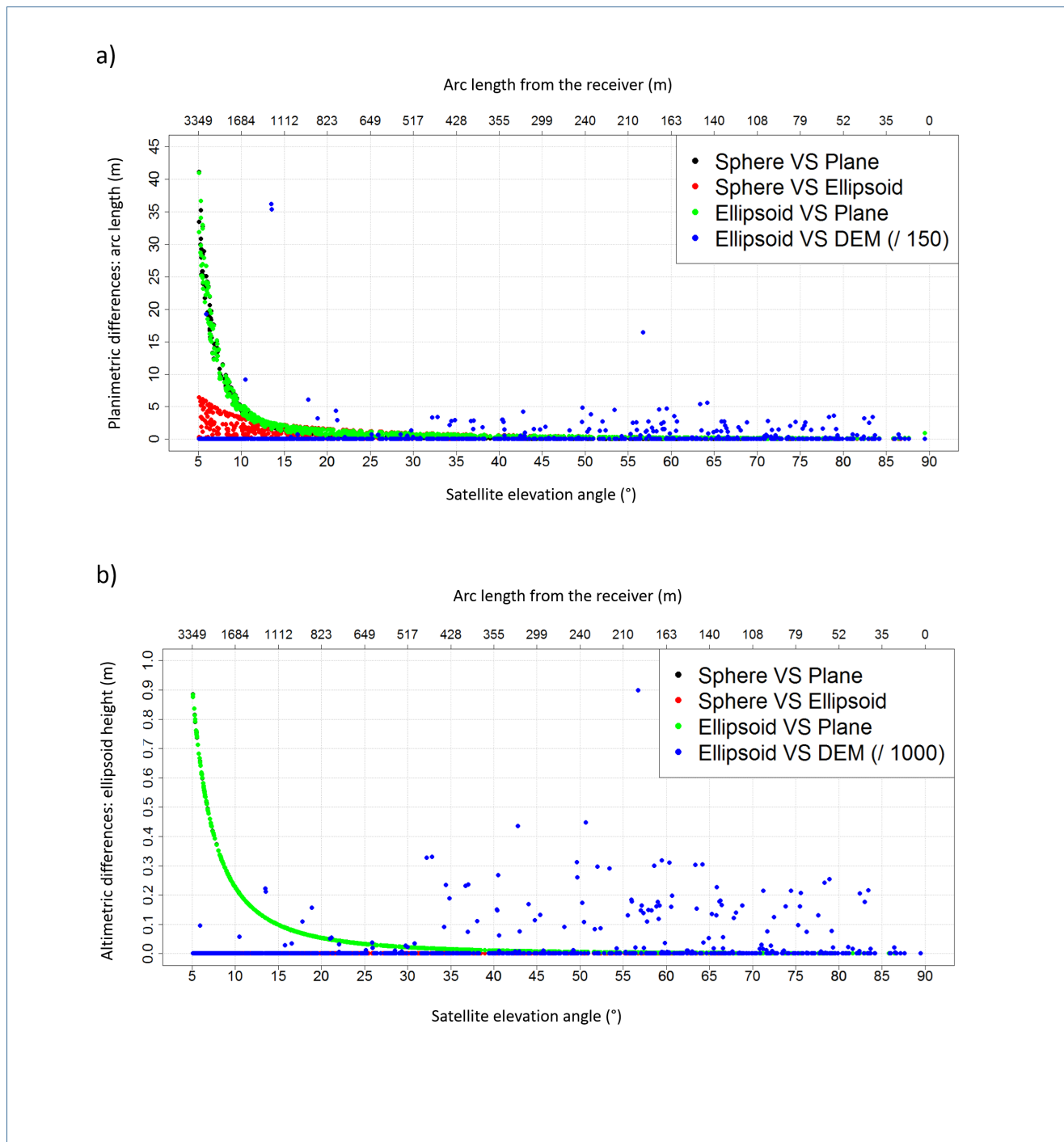


Fig. 13. Planimetric and altimetric differences between the specular reflection points obtained with the different algorithm. Receiver height above the reflecting surface: 300 m.

a) Planimetric differences as arc length (m). b) Altimetric differences as ellipsoid height (m).

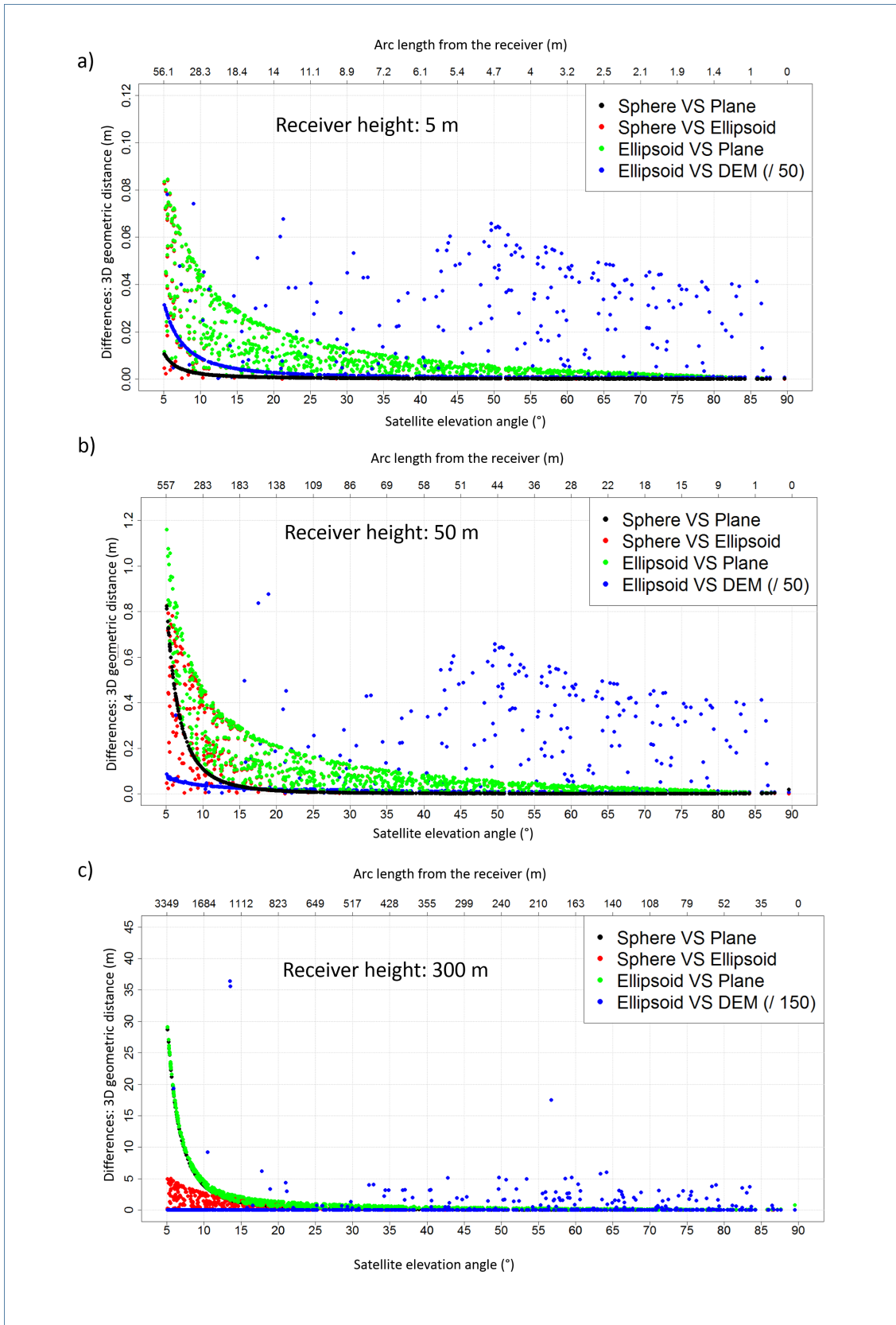


Fig. 14. 3D differences between the specular reflection points obtained with the different algorithm. Receiver height above the reflecting surface of 5 m (a), 50 m (b) and 300 m (c).

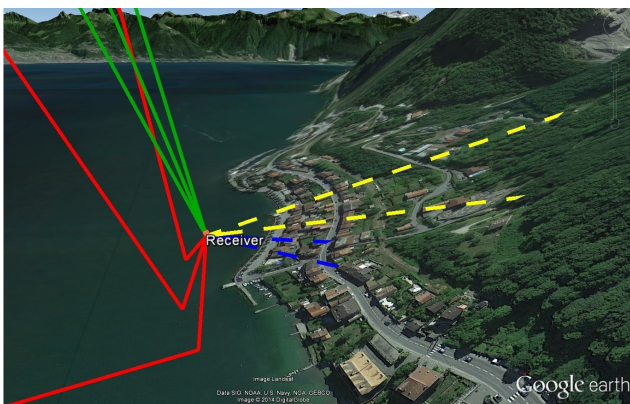


Fig. 15. Influence of the topography - Direct and reflected waves display.

(Topography amplified by a factor 3) Yellow lines: direct waves, sphere approximation algorithm ; Green lines: direct waves, taking a DEM into account ; Blue lines: reflected waves, sphere approximation algorithm ; Red lines: reflected waves, taking a DEM into account. It can be noticed that some yellow and blue lines (direct and reflected waves, sphere approximation algorithm) go through the mountain (reflection points having been calculated *inside* the mountain), whereas any red or green line (direct and reflected waves, integrating a DEM) go through it.

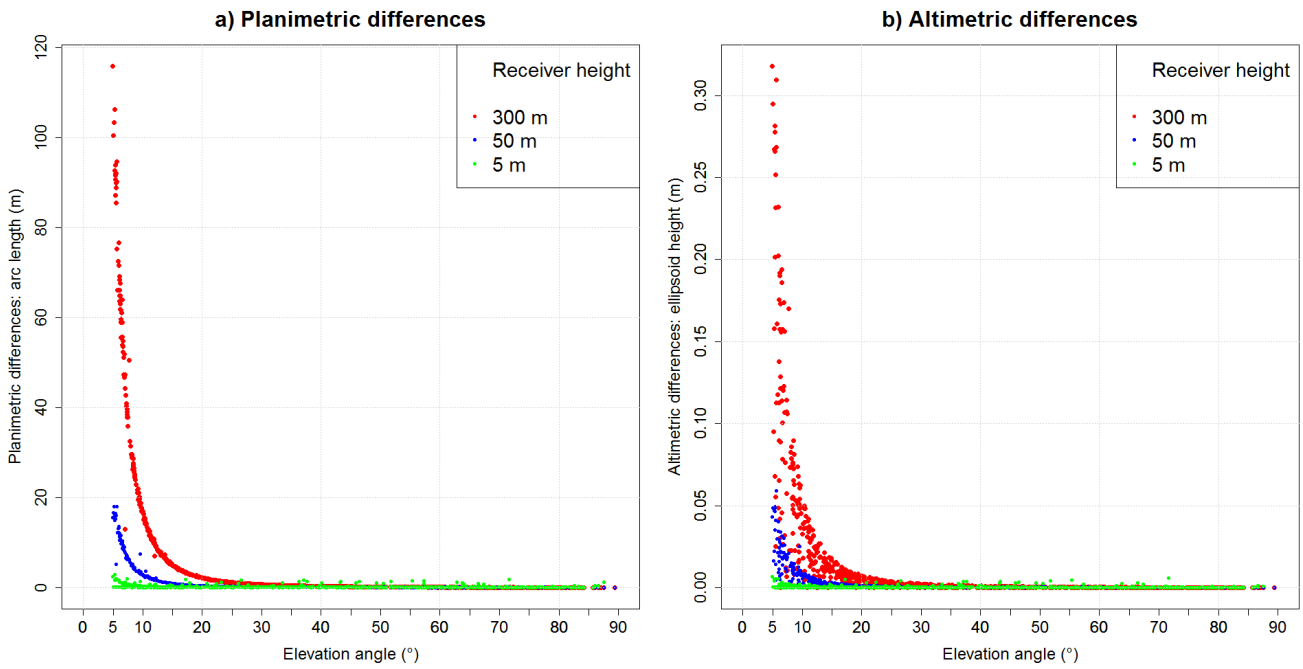


Fig. 16. Angular refraction correction as a function of the satellite elevation angle and for different receiver height above the reflecting surface.

a) Planimetric differences as arc length (m). b) Altimetric differences as ellipsoid height (m).

Table 1. Cross-validation between ellipsoid approximation and DEM integration

		Receiver height (m)		
		5	50	300
Distance to the specular reflection point with respect to the receiver: arc length (m)	Mean	12	122	729
	Maximum	56	557	3349
Position differences (m) (planimetric / altimetric)	Mean	0/0	0.002/0	0.01/0
	Maximum	0/0	0.04/0	0.2/0

Table 2. Maximum differences between the positions of the specular reflection points obtained with the different algorithms and for different receiver heights above the reflecting surface.

For each cell of this table, the first number is result obtained with minimum satellite elevation angle set to 5°, and the second number is the result obtained with minimum satellite elevation angle set to 10°.

Receiver height (m)	Differences (m)	Sphere VS Plane	Sphere VS ellipsoid	Ellipsoid VS Plane	Ellipsoid VS DEM
5	Arc length	0.015 / 0.003	0.108 / 0.054	0.104 / 0.053	14.594 / 4.417
	Ellipsoid height	0 / 0	0 / 0	0 / 0	1.500 / 1.500
	3D geometric distance	0.011 / 0.002	0.084 / 0.044	0.084 / 0.044	10.261 / 3.383
50	Arc length	1.163 / 0.142	1.081 / 0.536	1.175 / 0.507	1226.606 / 42.982
	Ellipsoid height	0.025 / 0.006	0 / 0	0.025 / 0.006	84.363 / 15.002
	3D geometric distance	0.823 / 0.107	0.837 / 0.440	1.158 / 0.453	1235.834 / 43.755
300	Arc length	41.127 / 5.043	6.438 / 3.215	41.017 / 5.058	5429.975 / 5429.975
	Ellipsoid height	0.885 / 0.222	0.001 / 0	0.884 / 0.222	897.785 / 897.785
	3D geometric distance	29.092 / 3.769	4.994 / 2.634	29.098 / 4.598	5461.230 / 5461.230