



Modelling sub-grid wetland in the ORCHIDEE global land surface model

B. Ringeval et al.

This discussion paper is/has been under review for the journal Geoscientific Model Development (GMD). Please refer to the corresponding final paper in GMD if available.

Modelling sub-grid wetland in the ORCHIDEE global land surface model: evaluation against river discharges and remotely sensed data

B. Ringeval^{1,*}, B. Decharme², S. L. Piao³, P. Ciais¹, F. Papa⁴, N. de Noblet-Ducoudré¹, C. Prigent⁵, P. Friedlingstein⁶, I. Gouttevin⁷, C. Koven⁸, and A. Ducharne⁹

¹Laboratoire des sciences du climat et de l'environnement (LSCE), UMR8212, Unité mixte CEA-CNRS-UVSQ, Orme des Merisiers Bât. 712, Point Courrier 132, 91191 Gif-sur-Yvette cédex, France

²Météo-France, CNRM/GMGEC/UDC, 31000 Toulouse, France

³Department of Ecology, College of Urban and Environmental Sciences, and Key Laboratory for Earth Surface Processes of the Ministry of Education, Peking University, Beijing 100871, China

⁴IRD LEGOS, 14 Avenue E.Belin, 31400 Toulouse, France

⁵Laboratoire d'Etudes du Rayonnement et de la Matière en Astrophysique, Observatoire de Paris, CNRS, Paris, France

⁶University of Exeter, Exeter, UK

[Title Page](#)

[Abstract](#)

[Introduction](#)

[Conclusions](#)

[References](#)

[Tables](#)

[Figures](#)



[Back](#)

[Close](#)

[Full Screen / Esc](#)

[Printer-friendly Version](#)

[Interactive Discussion](#)



Modelling sub-grid wetland in the ORCHIDEE global land surface model

B. Ringeval et al.

[Title Page](#)

[Abstract](#)

[Introduction](#)

[Conclusions](#)

[References](#)

[Tables](#)

[Figures](#)



[Back](#)

[Close](#)

[Full Screen / Esc](#)

[Printer-friendly Version](#)

[Interactive Discussion](#)



⁷Laboratoire de Glaciologie et Géophysique de l'Environnement, 38402 Saint Martin d'Hères, France

⁸Lawrence Berkeley National Laboratory, 1 Cyclotron Rd., MS 90-1116, Berkeley, CA 94720, USA

⁹UMR Sisyphe, UPMC/CNRS, 4 place Jussieu, 75252 Paris Cedex 05, France

*current address: Institute for Marine and Atmospheric Research Utrecht, Utrecht, The Netherlands

Received: 10 February 2012 – Accepted: 6 March 2012 – Published: 12 March 2012

Correspondence to: B. Ringeval (b.ringeval@sron.nl)

Published by Copernicus Publications on behalf of the European Geosciences Union.

Abstract

The quality of the global hydrological simulations performed by Land Surface Models (LSMs) strongly depends on processes that occur at unresolved spatial scales. Approaches such as TOPMODEL have been developed, which allow soil moisture redistribution within each grid-cell, based upon sub-grid scale topography. Moreover, the coupling between TOPMODEL and a LSM appears as a potential way to simulate wetland extent dynamic and its sensitivity to climate, a recently identified research problem for biogeochemical modelling, including methane emissions. Global evaluation of the coupling between TOPMODEL and an LSM is difficult, and prior attempts have been indirect, based on the evaluation of the simulated river flow. This study presents a new way to evaluate this coupling, within the ORCHIDEE LSM, using remote sensing data of inundated areas. Because of differences in nature between the satellite derived information – inundation extent – and the variable diagnosed by TOPMODEL/ORCHIDEE – area at maximum soil water content –, the evaluation focuses on the spatial distribution of these two quantities as well as on their temporal variation. Despite some difficulties in exactly matching observed localized inundated events, we obtain a rather good agreement in the distribution of these two quantities at a global scale. Floodplains are not accounted for in the model, and this is a major limitation. The difficulty of reproducing the year-to-year variability of the observed inundated area (for instance, the decreasing trend by the end of 90s) is also underlined. Classical indirect evaluation based on comparison between simulated and observed riverflow is also performed and underlines difficulties to simulate riverflow after coupling with TOPMODEL. The relationship between inundation and river flow at the basin scale in the model is analyzed, using both methods (evaluation against remote sensing data and riverflow). Finally, we discuss the potential of the TOPMODEL/LSM coupling to simulate wetland areas. A major limitation of the coupling for this purpose is linked to its ability to simulate a global wetland coverage consistent with the commonly used datasets. However, it seems to be a good opportunity to account for the wetland areas sensitivity to the climate and thus to simulate its temporal variability.

Modelling sub-grid wetland in the ORCHIDEE global land surface model

B. Ringeval et al.

[Title Page](#)

[Abstract](#)

[Introduction](#)

[Conclusions](#)

[References](#)

[Tables](#)

[Figures](#)



[Back](#)

[Close](#)

[Full Screen / Esc](#)

[Printer-friendly Version](#)

[Interactive Discussion](#)



1 Introduction

Land surface processes control the partition of incoming radiative energy into sensible and latent heat fluxes, and heat storage. This partition depends on the available net energy and on soil moisture, which limits transpiration in dry regions (e.g. Teuling et al., 2009). Many global and regional modelling studies have demonstrated the influence of soil moisture on climate variability and predictability (e.g. Douville et al., 2003; Seneviratne et al., 2006; Vautard et al., 2007). The spatiotemporal variability of land surface processes is usually represented as a boundary condition to the atmosphere by land surface models (LSMs). In this context, soil moisture is a key variable of LSMs, and has motivated inter-comparison projects (GSWP-2; e.g. Guo et al., 2007), but the evaluation of soil moisture in models remains challenging. One issue is that in many LSMs, soil moisture is not calculated as a physical state variable, but rather as an index for predicting evapotranspiration and runoff, thus making it difficult to evaluate with observations. Then, there is a scale discrepancy between a model grid, and either in situ or satellite measurements of soil moisture. Finally, remote sensing data do not provide a direct observation of soil moisture and have errors often poorly characterized (Schumann et al., 2009). Alongside with above issues regarding the evaluation of simulated soil moisture at the resolution of global climate models (typically from 50 to 300 km), an improvement in the treatment of subgrid-scale variations is also needed. Indeed, several studies showed a better simulation of interception, regional water budgets and streamflow when accounting for a subgrid description of precipitation, soil moisture, drainage and/or runoff (Decharme and Douville, 2007; Wood et al., 1998). One strategy for treating subgrid runoff in LSMs relies on the introduction of the simple hydrological model TOPMODEL, which was initially developed to account for saturation excess runoff (Dunne, 1978) owing to the variable contributing area concept (Beven and Kirkby, 1979). The use of TOPMODEL in LSMs (Decharme et al., 2006; Decharme and Douville, 2005; Habets and Saulnier, 2001, Famiglietti and Wood, 1994; Koster et al., 2000; Gedney and Cox, 2003) relies on soil moisture redistribution within each

GMDD

5, 683–735, 2012

Modelling sub-grid wetland in the ORCHIDEE global land surface model

B. Ringeval et al.

[Title Page](#)

[Abstract](#)

[Introduction](#)

[Conclusions](#)

[References](#)

[Tables](#)

[Figures](#)



[Back](#)

[Close](#)

[Full Screen / Esc](#)

[Printer-friendly Version](#)

[Interactive Discussion](#)



grid-cell based upon a topographic index, what allows to determine the saturated fraction of each grid cell, given grid-cell average soil moisture computed by the LSM.

Wetlands cover a large diversity of ecosystems, including peatlands, marshes, and swamps (Reichardt, 1995), but have in common a strong impact on climate, both directly by humidifying the atmosphere (Krinner, 2003) or indirectly as the single largest source of atmospheric methane (CH₄) (Forster et al., 2007). Until recently, studies related to current wetland CH₄ emissions (e.g. Walter et al., 2001; Zhuang et al., 2004, Wania et al., 2010) considered fixed wetland extent and introduced a vertical hydrologic variability through the change of the water table depth. But recent findings have shown that the spatial and temporal variability of wetland areas may play an important role in controlling seasonal and interannual changes of CH₄ emissions from wetlands (Bloom et al., 2010; Ringeval et al., 2010) and thus changes in global CH₄ growth rate (Bousquet et al., 2006). This recent finding overturns much previous thinking that the source areas of CH₄ were unchanging, or slowly varying on millennial time scales (Kaplan et al., 2006). Thus, accounting for wetland dynamics in land surface modelling has emerged as a major research problem. This is particularly true in the context of anthropogenic climate change, as changes in wetland extents are expected to impact the future evolution of CH₄ emissions with feedbacks on global climate (Gedney et al., 2004; Ringeval et al., 2011). Because of the sensitivity of CH₄ emissions to wetland extent, it is particularly important to have a well-constrained estimate of the dynamic response of wetland extent to climate.

In this context, it is necessary to account for wetland dynamic through a process-based approach rather than empirically (Krinner, 2003; Riley et al., 2011). Given that TOPMODEL enables to simulate the dynamic of saturated areas, its coupling with an LSM is more and more used to diagnose the wetland extent dynamic (Gedney and Cox, 2003; Ringeval et al., 2011) or the presence of peatlands (Kleinen et al., 2012). However, the interest of this coupling to diagnose wetland extent at global scale remains poorly evaluated. The evaluation of the coupling between TOPMODEL and an LSM is usually indirect, based on comparisons between simulated and observed river

Modelling sub-grid wetland in the ORCHIDEE global land surface model

B. Ringeval et al.

[Title Page](#)

[Abstract](#)

[Introduction](#)

[Conclusions](#)

[References](#)

[Tables](#)

[Figures](#)



[Back](#)

[Close](#)

[Full Screen / Esc](#)

[Printer-friendly Version](#)

[Interactive Discussion](#)



Modelling sub-grid wetland in the ORCHIDEE global land surface modelB. Ringeval et al.

[Title Page](#)[Abstract](#)[Introduction](#)[Conclusions](#)[References](#)[Tables](#)[Figures](#)[Back](#)[Close](#)[Full Screen / Esc](#)[Printer-friendly Version](#)[Interactive Discussion](#)

discharge (e.g. Decharme and Douville, 2007). Recently, a global, multi-year dataset quantifying the monthly distribution of flooded areas at ~25 km resolution has been generated from multiple satellite observations optimized specifically for surface water detection (Papa et al., 2010; Prigent et al., 2001, 2007). This dataset represents an unprecedented source of information to evaluate directly the coupling between TOPMODEL and a LSM. Given that the (Prigent et al., 2007) data have already been used successfully to approach wetland dynamics (Ringeval et al., 2010, WETland and Wetland CH₄ Inter-comparison of Models Project, <http://arve.epfl.ch/research/wetchimp/>), the evaluation of the TOPMODEL/LSM coupling against these data will allow to better characterize the ability of such physically-based approach to describe the sub-grid area of wetland. Through the study of the year-to-year variability, this evaluation will also enable us a better characterizing the TOPMODEL/LSM ability to describe the wetland extent sensitivity to climate.

In this study, a subgrid soil moisture redistribution scheme based on TOPMODEL is implemented into the ORCHIDEE (ORganizing Carbon and Hydrology In Dynamic Ecosystems) global LSM (Krinner et al., 2005), which is run globally at 1 degree resolution. The ORCHIDEE model is first refined to account for the soil water freezing and thawing cycles, a necessary step for modelling wetland dynamics in cold regions. These developments are described in Sect. 2. The experimental set-up is presented in Sect. 3. Then, the evaluation of the current and new versions of ORCHIDEE is performed through the classic simulation of streamflow and comparisons with observations of river discharge at gauging stations (Sect. 4). The coupling of TOPMODEL and ORCHIDEE is then further evaluated through the comparison of predicted saturated areas against the satellite products of (Papa et al., 2010) (Sect. 5). The discussion has two objectives (Sect. 6). First, it focuses on the ability of the new version of ORCHIDEE to capture the relationship between streamflow and inundation extent at the scale of river basins. Second, the suitability and limitations of an approach like TOPMODEL to simulate wetland areas at large scales are discussed. Finally, Sect. 7 concludes the study.

2 Model description

2.1 Current soil hydrology model of ORCHIDEE

The ORCHIDEE model is a process-based Dynamic Global Vegetation Model developed for carbon cycle applications and as the land component of the IPSL coupled model (Krinner et al., 2005) and using the approach of Decharme et al., (2006). The model includes parameterizations of canopy physiology (photosynthesis and canopy conductance) that are intimately linked to energy and water fluxes and operated at a time scale of 30 min. Soil hydrology is modelled using a semi-empirical approach (Ducoudré et al., 1993).

The soil moisture reservoir has a fixed depth of 2 m, representing essentially the root zone, and a spatially uniform volumetric soil water holding capacity ($SWC = 150 \text{ kg m}^{-3}$, fixed value for all grid-cells) that corresponds to the maximal amount of water that plants can extract. In ORCHIDEE, the evolution of soil moisture is computed daily with a two-layer soil model (Ducoudré et al., 1993), composed of a 2 m thick soil reservoir and a surface layer of variable thickness receiving incoming precipitation. The water content of each layer is updated by inputs from snowmelt and rainfall not intercepted by the canopy, and by losses from soil evaporation, transpiration, sublimation, deep drainage, and surface runoff. Drainage from the top layer depends on its volumetric soil moisture (θ) in a nonlinear way. It remains small until θ reaches 0.75, and increases strongly above this threshold (De Rosnay and Polcher, 1998). Drainage from the lower layer (base flow) is parameterized to equal to 95 % of the overflow runoff, simply defined as the excess water when the soil is over its maximum capacity, as in a classic bucket model (Manabe, 1969).

ORCHIDEE represents heterogeneous vegetation using a “mosaic” in each grid cell, given a set of 12 Plant Functional Types (PFT) and bare soil. The total water flux from the land surface to the atmosphere in each grid cell is computed as the sum of snow sublimation, soil evaporation, transpiration by plants and evaporation of water intercepted by the canopy over all the PFTs. The soil hydrology module provides water

Modelling sub-grid wetland in the ORCHIDEE global land surface model

B. Ringeval et al.

[Title Page](#)

[Abstract](#)

[Introduction](#)

[Conclusions](#)

[References](#)

[Tables](#)

[Figures](#)



[Back](#)

[Close](#)

[Full Screen / Esc](#)

[Printer-friendly Version](#)

[Interactive Discussion](#)



Modelling sub-grid wetland in the ORCHIDEE global land surface model

B. Ringeval et al.

[Title Page](#)

[Abstract](#)

[Introduction](#)

[Conclusions](#)

[References](#)

[Tables](#)

[Figures](#)

[⏪](#)

[⏩](#)

[◀](#)

[▶](#)

[Back](#)

[Close](#)

[Full Screen / Esc](#)

[Printer-friendly Version](#)

[Interactive Discussion](#)

limitations to the carbon module, and thus governs carbon allocation, litter and soil carbon decomposition. A separate water stress function acting on photosynthesis and plant transpiration is calculated from the convolution between the water content of the two soil layers and the root profile. This stress function varies between 0 and 1, respectively at the minimum (ω_{\min}) and maximum soil water content (ω_{\max}) (McMurtrie et al., 1990).

We made the following modifications to the current ORCHIDEE hydrological processes (Krinner et al., 2005):

- Transpiration does not stop when water is intercepted by the canopy; i.e. we assume that stomata can still emit water vapour (N. Viovy, personal communication, 2009).
- The water-holding capacity of the canopy is increased (0.1 to 0.5 mm of water per unit of LAI) to be in closer agreement with values reported in (Crockford and Richardson, 2000).
- The soil water holding capacity is assumed to vary spatially, as a function of the surface soil texture from the Food and Agricultural Organization dataset. To do so, we computed a soil saturation capacity (ω_{sat}) and a wilting point (ω_{wilt}) using regression fits to soil parameter values (Noilhan and Lacarrere, 1995) as well as to soil organic matter content (Lawrence and Slater, 2007). The ORCHIDEE SWC is then defined as 60%. $\omega_{\text{sat}} - \omega_{\text{wilt}}$ so as to keep a global mean soil water holding capacity value of 150 kg m^{-3} , as in the current model version, and thus bring minimum perturbations (Ducharne and Laval, 2000). SWC used as input for ORCHIDEE is given in Fig. S1 (right panel).

This modified ORCHIDEE version is the starting point upon which freeze/thaw parameterization and TOPMODEL subgrid soil moisture redistribution are included, as summarized in Fig. 1.

2.2 Freeze and thaw processes

Figure 1 summarizes the different modifications included in this version of ORCHIDEE that are relevant to cold regions. In order to account for saturated area extension during the spring thaw and their shrinking or disappearance during the autumn freeze, we add to ORCHIDEE a simple parameterization of frozen soil water. The modified version is called ORCHIDEE-FRZ (Fig. 1). This includes taking into account the soil heat conductivity and heat capacity of liquid and frozen phases, as in (Poutou et al., 2004). An apparent heat capacity representing latent heat release and uptake during freezing and thawing respectively is introduced. The thermal and hydrological schemes of ORCHIDEE are respectively discretized vertically using 7 and 2-layers. The frozen fraction of each thermal layer that varies between 0 and 1, is diagnosed from the thermal scheme, then multiplied by a water content profile obtained by interpolating the 2 hydrological layers onto the 7 thermal layers. This allows diagnosing the frozen water content in each of the 7 thermal layers, keeping in mind that vertical water distribution into ORCHIDEE is not explicitly represented.

The second modification introduced is the implementation of a reduction of water infiltration in frozen soils (Farouki, 1981 cited by Poutou et al., 2004). This process is represented by scaling the potential infiltration with the reduction of liquid water holding capacity within the upper 20 cm of soil caused by presence of ice in the soil.

$$R_{\text{froz}} = P_g * \left(\frac{\omega_{\text{froz}}}{\text{SWC}} \right)_{20 \text{ cm}} \quad (1)$$

Where ω_{froz} is the frozen soil water content in the upper soil top 0.20 m and P_g is the water input of the soil (rain + snowmelt). In Eq. (1) the soil liquid water content is reduced when a fraction of the pores is filled up by ice, which has for consequence to increase meltwater runoff during spring (R_{froz} see Table 1) (Takata and Kimoto, 2000). This is a typical case of Horton runoff occurring when production of meltwater exceeds the soil saturated hydraulic conductivity (see e.g. Dunne, 1978). Finally, frozen water

Modelling sub-grid wetland in the ORCHIDEE global land surface model

B. Ringeval et al.

[Title Page](#)

[Abstract](#)

[Introduction](#)

[Conclusions](#)

[References](#)

[Tables](#)

[Figures](#)

[⏪](#)

[⏩](#)

[◀](#)

[▶](#)

[Back](#)

[Close](#)

[Full Screen / Esc](#)

[Printer-friendly Version](#)

[Interactive Discussion](#)



is discarded for computing the plant water stress function and water availability for litter degradation.

2.3 Subgrid soil water content distribution from TOPMODEL scheme

We follow the approach of (Decharme et al., 2006; Habets and Saulnier, 2001) for the ISBA model and (Gedney and Cox, 2003) for the MOSES model (Beven and Kirkby, 1979) to describe a subgrid soil moisture distribution into ORCHIDEE using TOPMODEL concepts. Following (Decharme and Douville, 2007) we also incorporate the bias correction of (Saulnier and Datin, 2004). This defines the ORCHIDEE-TOP version, which we apply globally and evaluate in this study (Fig. 1). In the present paper, we use the resulting soil moisture distribution to determine a fraction at maximum soil water content within each grid-cell (F_{\max}), as a function of the average soil moisture computed by the LSM for the considered grid-cell. TOPMODEL was initially developed at river catchment scale. It attempted to combine the important distributed effects of channel network topology and dynamic contributing areas for runoff generation (Beven and Kirkby, 1979; Sivapalan et al., 1987). This formalism takes into account topographic heterogeneities explicitly by using the spatial distribution of the topographic indices, λ_i (m), in each grid-cell defined as follows:

$$\lambda_i = \ln(a_i / \tan\beta_i) \quad (2)$$

where a_i (m) is the drainage area per unit of contour of a local pixel, i , and $\tan\beta_i$, the local topographic slope, approximates the local hydraulic gradient where β_i is the local surface slope. If a given pixel in a grid-cell has a large drainage area and a low local slope, its topographic index will be large and thus, its ability to be saturated will be high. Then, this topographic index can be related to a local water deficit, and using the spatial distribution of the topographic indices over the river catchment, a saturated fraction, inversely proportional to the river catchment mean deficit can be defined.

The coupling between TOPMODEL and ORCHIDEE assumes that the relationship between local soil moisture, mean deficit and topography holds over each grid-cell

Modelling sub-grid wetland in the ORCHIDEE global land surface model

B. Ringeval et al.

[Title Page](#)

[Abstract](#)

[Introduction](#)

[Conclusions](#)

[References](#)

[Tables](#)

[Figures](#)



[Back](#)

[Close](#)

[Full Screen / Esc](#)

[Printer-friendly Version](#)

[Interactive Discussion](#)



of the LSM resolution (Gedney and Cox, 2003). The mean value of the topographic index is noted λ_m . The coupling between TOPMODEL and a LSM consists in the estimation of the grid-cell mean deficit from variables computed by the LSM. Here, following (Decharme et al., 2006), we consider that the grid-cell average deficit (D_t) and the soil moisture computed by ORCHIDEE (ω_{soil}) are proportional. All details can be found in (Decharme et al., 2006) and we focus in the following only on the coupling specificities linked to representation of soil water in ORCHIDEE.

In the present study, the grid-cell average deficit D_t can be simply expressed as:

$$D_t = ((\omega_{\text{max}} - \omega_{\text{min}}) - \omega_{\text{soil}}) \cdot h_{\text{soil}} \quad (3)$$

where h_{soil} is the ORCHIDEE soil depth. In ORCHIDEE, D_t is computed as a deficit from ω_{max} and this leads to diagnose the subgrid fraction at maximum soil water content (F_{max}). As in (Kleinen et al., 2012), the maximum soil water content cannot be considered as a saturated state and thus, F_{max} cannot be directly compared to saturated fractions simulated by LSM/TOPMODEL coupling as in (Decharme et al., 2006).

Given the simple representation of soil hydrology in our LSM, the assumptions used in TOPMODEL to establish the relationship between mean deficit, local deficit and topography (namely hydraulic gradient equal to surface slope, steady-state conditions, and exponential decrease of hydraulic conductivity) are not explicitly accounted for into ORCHIDEE. The above coupling allows making the transition from the notion of vertical water flux, which is present in the LSM, to that of the horizontal water fluxes, on which TOPMODEL is based.

In this new version, surface runoff is computed as the sum of Dunne runoff from precipitation falling on the fraction at maximum soil water content, F_{max} , and of Horton runoff over frozen soil (Table 1). For partially frozen soils, we thus introduce an effective fraction at maximum soil water content ($F_{\text{max}}^{\text{eff}}$) after (Gedney and Cox, 2003), defined by:

$$F_{\text{max}}^{\text{eff}} = \left(\frac{\omega_{\text{liq}}}{\omega_{\text{liq}} + \omega_{\text{froz}}} \right)_{75 \text{ cm}} \cdot F_{\text{max}} \quad (4)$$

Modelling sub-grid wetland in the ORCHIDEE global land surface model

B. Ringeval et al.

Title Page

Abstract

Introduction

Conclusions

References

Tables

Figures



Back

Close

Full Screen / Esc

Printer-friendly Version

Interactive Discussion



where ω_{liq} and ω_{froz} are the liquid and frozen soil water content in the upper soil top 0.75 m, respectively. The minimum 0.75 m depth is required so as to prevent surface wetland creation during early winter in boreal regions, when the ORCHIDEE soil still contains significant liquid water in the deep layer. In reality, this liquid water gets trapped at the bottom of the soil profile, and cannot contribute to wetland formation.

Runoff from the lower layer (drainage) is then parameterized at each time step as the amount of water that cannot infiltrate into the soil column if the total water holding capacity is reached. We also introduce a subgrid variability of evapotranspiration. In partly saturated grid-cells, it is computed as the average of the evapotranspiration depending on the grid-cell average soil moisture weighted by $(1-F_{max}^{eff})$ and potential evapotranspiration weighted by F_{max}^{eff} . The surface energy balance is modified in consequence.

3 Experimental set-up and datasets

3.1 Description of the simulations

The global meteorological forcing to drive ORCHIDEE is provided by the monthly NCEP climate forcing data corrected by the high-resolution gridded data sets of the Climatic Research Unit (N. Viovy, personal communication, 2009, <http://dods.extra.cea.fr/data/p529viov/cruncep/readme.htm>) on 6-hourly time step at 1° resolution. This forcing is a combination of global observation-based datasets with the model reanalysis of the National Center for Environmental Prediction–National Center for Atmospheric Research (NCEP–NCAR). Precipitation is distributed homogeneously over each time step. The present-day vegetation map is prescribed from (Loveland et al., 2000). Soil albedo is defined from (Zobler, 1999). For running ORCHIDEE-TOP, we use the topographic indices at the 1-km resolution given by the HYDRO1k dataset (<http://www.edcdaac.usgs.gov/gtopo30/hydro>). In each grid-cell, we calculate the mean, standard deviation, and skewness of the HYDRO1k topographic indices and

Modelling sub-grid wetland in the ORCHIDEE global land surface model

B. Ringeval et al.

[Title Page](#)

[Abstract](#)

[Introduction](#)

[Conclusions](#)

[References](#)

[Tables](#)

[Figures](#)

[⏪](#)

[⏩](#)

[◀](#)

[▶](#)

[Back](#)

[Close](#)

[Full Screen / Esc](#)

[Printer-friendly Version](#)

[Interactive Discussion](#)



we used them to parameterize a three parameter gamma distribution (Decharme et al., 2006, 2000; Sivapalan et al., 1987). Simulations are performed at a 30-min time step over the 1985–2004 period. All simulations start from initial condition of soil moisture at ω_{\max} . The 1985–1992 years are used to reach the soil water steady state equilibrium then the 1993–2004 period is used for evaluation against river runoff and satellite data. Three simulations are performed to compare the current version of ORCHIDEE with the new versions ORCHIDEE-FRZ and ORCHIDEE-TOP.

3.2 Evaluation criteria

3.2.1 Evaluation against river discharge

The simulated river discharge is compared with monthly observations at gauging stations distributed over the largest river basins globally (see Fig. 2a the spatial distribution of these watersheds), in line with (Decharme and Douville, 2007). Simulated runoff and drainage on a global grid is converted into river discharge using the routing scheme of ORCHIDEE (Ngo-Duc et al., 2005). In this scheme, at each time step, surface runoff and drainage are temporarily stored in three reservoirs, each of which has different residence time constants. The water is then progressively routed to the oceans in the direction of greatest slope and taking into account the tortuous path of the river channels, through a cascade of linear reservoirs along the river network, described at the 0.5° resolution (Ngo-Duc et al., 2007). Mean annual cycles and monthly discharge anomalies are computed for the years 1985–2000 for which we have observations. Model results are evaluated against observed river discharge using the ratio between simulated and observed annual mean discharges $\overline{Q_{\text{sim}}}/\overline{Q_{\text{obs}}}$ (hereafter named annual discharge ratio criterion), the model efficiency, Eff (see definition in Appendix A, (Nash and Sutcliffe, 1970)), as well as correlation (r^2) calculated between observed and modelled monthly discharge anomalies (these anomalies are obtained removing a mean seasonal cycle over the period). In addition, the Root Mean Square Error diagnostic

Modelling sub-grid wetland in the ORCHIDEE global land surface model

B. Ringeval et al.

[Title Page](#)

[Abstract](#)

[Introduction](#)

[Conclusions](#)

[References](#)

[Tables](#)

[Figures](#)

[⏪](#)

[⏩](#)

[◀](#)

[▶](#)

[Back](#)

[Close](#)

[Full Screen / Esc](#)

[Printer-friendly Version](#)

[Interactive Discussion](#)



brings information about observation-model co-variability (as r) but also about the conditional and unconditional model bias (Weglarczyk, 1998). The fact that the model does not include anthropogenic modifications of river hydrographs (e.g. dams, reservoirs, irrigation) could lead to a potential limitation to the use of observed streamflow to evaluate the models.

3.2.2 Evaluation against satellite observations of inundated area

We compare inundated areas inferred from satellite observations (Papa et al., 2010), called hereafter P_{10} , with the distribution of F_{\max} modelled by ORCHIDEE-TOP. The P_{10} product is an estimate of the extent of episodic and seasonal inundations, wetlands, rivers, lakes and irrigated agriculture at 0.25° resolution at the equator. The P_{10} method uses a complementary suite of satellite observations including passive microwave observations (SSM/I emissivities), active microwave observations (ERS scatterometer), along with AVHRR-NDVI. An unsupervised classification of the three sources of satellite data is performed, and pixels with satellite signatures likely related to inundation are retained. For each inundated pixel, the monthly fractional coverage by open water is obtained using the passive microwave signal and a linear mixture model with end-members calibrated with scatterometer observations to account for the effects of vegetation cover. For the boreal regions, where microwave measurements are sensitive to the snow cover, snow masks were used to edit the results and avoid any confusion with snow-covered pixels. The weekly North Hemisphere and South Hemisphere snow mask from the National Snow and Ice Data Center (NSIDC) is adopted and averaged on a monthly basis (Armstrong and Brodzik, 2005). The methodology described above was initially applied to the 1993–2000 period (Prigent et al., 2007) then updated to 2004 (Papa et al., 2010). We use here the dataset available at a monthly time scale for 1993–2004. More detailed information concerning the seasonal and interannual behavior of the surface water extent dataset for specific regions can be found in (Papa et al., 2006) and (Papa et al., 2007, 2008) respectively for the Indian sub-continent and the boreal regions. We aggregated the P_{10} inundated area data to 1° resolution for comparison with the model outputs.

Modelling sub-grid wetland in the ORCHIDEE global land surface model

B. Ringeval et al.

[Title Page](#)

[Abstract](#)

[Introduction](#)

[Conclusions](#)

[References](#)

[Tables](#)

[Figures](#)

[⏪](#)

[⏩](#)

[◀](#)

[▶](#)

[Back](#)

[Close](#)

[Full Screen / Esc](#)

[Printer-friendly Version](#)

[Interactive Discussion](#)



Modelling sub-grid wetland in the ORCHIDEE global land surface model

B. Ringeval et al.

[Title Page](#)

[Abstract](#)

[Introduction](#)

[Conclusions](#)

[References](#)

[Tables](#)

[Figures](#)

⏪

⏩

◀

▶

[Back](#)

[Close](#)

[Full Screen / Esc](#)

[Printer-friendly Version](#)

[Interactive Discussion](#)



The P_{10} dataset provides the distribution of inundated fraction (water-logged) whereas the ORCHIDEE-TOP model calculates the subgrid fraction at maximum soil water content. Hence, the two variables are not comparable in absolute value. In the aim to simulate wetland extent compatible with P_{10} , we introduce a global parameterization in order to deduce wetland fractions (F_{wet}) from fraction at maximum soil water content (F_{max}). This parameterization is based on the assumption that the mean topographic index (λ_m) is prone to uncertainty, in particular linked to the resolution of the used Digital Elevation Model (here HYDRO1k), what justifies some calibration (Ducharne, 2009). We performed a shift of the topographic index distribution by modifying the mean topographic index in all grid-cells:

$$\lambda'_m = \lambda_m + c \quad (5)$$

where the constant c has been optimized to obtain a annual global F_{wet} close to the global annual $P_{10} + 29\%$, i.e. P_{10} + the estimate drained wetland extent since the pre-industrial period (Sterling and Ducharne, 2008). With c (unit in $\ln(\text{m})$; see (Ducharne, 2009)), the yearly global F_{wet} is equal to 3.4 % while the mean annual P_{10} fraction over 1993–2004 is 2.5 % and the mean F_{max} is 9.7 %.

However, the P_{10} absolute inundated area fractions themselves are prone to some uncertainties: e.g. the satellite observations have difficulties in catching small, isolated water saturated patches in dry areas, as well as small dry patches in largely wet areas (see also the discussion in Sect. 6). Moreover, the floodplains processes are not simulated by ORCHIDEE-TOP that could lead to mismatch between the two products. All these elements make that the inundated fraction given by P_{10} and the subgrid fractions given by ORCHIDEE-TOP are difficult to compare in absolute values even after the above-described parameterisation. Hence, in the following, we focus our evaluation on comparing (1) the spatial distributions of P_{10} and F_{wet} (and F_{max}) at the scale of large regions with extensive naturally inundated areas, and (2) the seasonal and interannual variability of normalized P_{10} and F_{wet} .

The natural hydrological unit is the river catchment, but some regions rich in surface water bodies in P_{10} do not belong to the largest rivers basins of Fig. 2a, e.g. over the

Northwest of Canada. Therefore, we also consider the approach which consists in dividing the global land area into 11 regions, inspired from the TRANSCOM atmospheric CO₂ transport models intercomparison study (Gurney et al., 2002) (Fig. 2b). This arbitrary breakdown is a reasonable compromise to evaluate continental scale processes that lead to saturated area, and it is compatible with the estimation of CH₄ fluxes from wetlands using atmospheric inversions (Bousquet et al., 2006). In addition, we also analyze individual river catchments in order to study the relationship between F_{wet} and river discharge, including inter-catchment differences.

4 Results of the comparison with river discharge

The seasonal cycle and interannual discharge variability are shown in Fig. 3 for representative watersheds in boreal regions (the Yenisey, Ob, and Amur), in temperate regions (the Mississippi and Danube) and in tropical regions (the Ganges and Rio-Amazonas). The corresponding values of each statistical criterion are given in Table 2 for both seasonal cycle and year-to-year anomalies. Adding soil water freezing (ORCHIDEE-FRZ) leads to a seasonal peak in runoff whose intensity, except for the Ob river, tends to be in better agreement with observations (Yenisey in Fig. 3 and Lena, not shown). But a too-early runoff peak (one month earlier) is produced, as compared to the observations, and this limits the improvement of Eff over boreal regions. Possible explanations for the early discharge peak include the crude representation of snow, and thus of the snowmelt timing (as mentioned in (Decharme and Douville, 2007)), and the lack of glacier runoff in the model, both of which could contribute to the error. However, comparison between seasonality of snowmelt in ORCHIDEE and observed snow cover (NSIDC snow cover product provided by ISLSCP-II) (not shown) did not show any systematic bias in the snow-melt timing over the different watersheds. (Cox et al., 1999) noted that on coarse spatial scales such as those of typical GCM resolutions, heterogeneities in frozen soil and soil freezing hydraulic conductivity would allow surface runoff from frozen soil surface to infiltrate into the soil elsewhere in the same

Modelling sub-grid wetland in the ORCHIDEE global land surface model

B. Ringeval et al.

[Title Page](#)

[Abstract](#)

[Introduction](#)

[Conclusions](#)

[References](#)

[Tables](#)

[Figures](#)



[Back](#)

[Close](#)

[Full Screen / Esc](#)

[Printer-friendly Version](#)

[Interactive Discussion](#)



grid box. To account for this, one option is to introduce a buffer reservoir with a time constant that enables the storage of water from melting snow and its delivery to the soil through delayed infiltration later in the season (Poutou et al., 2004). Concerning the Ob river where the runoff peak is coarsely estimated, the misfit could be related to the non-representation of large floodplains as well as to the effects of dams (Coe, 2000).

The ORCHIDEE-TOP version leads to an important decrease of yearly river discharge (see $\overline{Q_{sim}}/\overline{Q_{obs}}$ in Table 2). The coupling with TOPMODEL leads to a decrease in the soil water content and thus the runoff generated by excess water when the soil is at its maximum capacity. The intensity of this decrease varies throughout the year and from one river to another (left-hand panel in Fig. 3). This decrease globally leads to a degraded simulation of the riverflow seasonal cycle, except for the Ganges (Table 2). This suggests that the decrease of the soil water content following the representation of fractions at maximum soil water content is too large. This could be attributed to the difficulty to simulate the absolute value of the contributing area with a two-layer soil model (see discussion in Sect. 6). Regarding interannual variability (right-hand panel in Fig. 3 and Table 2), the combined effect of the added frozen soil processes and subgrid water redistribution leads to an increase in r^2 and/or decrease in RMSE for many rivers (Yenisey, Amur, Danube, Mississippi, Ganges). In the Ob watershed, the decrease in the ability to simulate the year-to-year variability in the riverflow is totally explained by the freeze/thaw processes (Table 2); the evolution in the permafrost melting or in the infiltration due to discontinuous permafrost could be explain a part of the disagreement. Only for the Rio-Amazonas, accounting for subgrid water distribution leads to decrease both the r^2 and the RMSE.

For the Mississippi at Vicksburg (Fig. 3), the results of the initial version of ORCHIDEE show a large soil water content during summer (not shown) that leads to an excess of river flow during the period July–October. (Guimberteau et al., 2010) attributed this river flow overestimation to a too weak evapotranspiration and corrected it by increasing root depth of the present vegetation (natural and anthropogenic PFT “C3 grass”). Part of the difference in river flow between observations and our model could

Modelling sub-grid wetland in the ORCHIDEE global land surface model

B. Ringeval et al.

[Title Page](#)

[Abstract](#)

[Introduction](#)

[Conclusions](#)

[References](#)

[Tables](#)

[Figures](#)



[Back](#)

[Close](#)

[Full Screen / Esc](#)

[Printer-friendly Version](#)

[Interactive Discussion](#)



Modelling sub-grid wetland in the ORCHIDEE global land surface model

B. Ringeval et al.

[Title Page](#)

[Abstract](#)

[Introduction](#)

[Conclusions](#)

[References](#)

[Tables](#)

[Figures](#)



[Back](#)

[Close](#)

[Full Screen / Esc](#)

[Printer-friendly Version](#)

[Interactive Discussion](#)



also be attributed to anthropogenic impacts, which cannot be taken into account in our approach. For instance, irrigation could modify the hydrological cycle too (10% of the irrigated agriculture over the world is in the USA (Siebert et al., 2005)). When coupling with TOPMODEL, this large summer soil water content leads to substantial contributing areas then Dunne runoff resulting in a negative feedback on the soil water content (i.e. leading to a decrease in the soil water content). It seems that this decrease is too large (see $\overline{Q_{\text{sim}}}/\overline{Q_{\text{obs}}}$ in Table 2) as mentioned above.

For the Rio-Amazonas at the Obidos gauging-station located ~800 km upstream from the river mouth in the state of Para, Brazil, the application of ORCHIDEE-TOP shows a degradation compared to the current version (Fig. 4). Both ORCHIDEE versions have a too early peak as compared with observations. This basin is prone to large scale floodplain inundation that leads to the formation of a buffer reservoir during the wet season with its own time constant linked up to re-infiltration rate and aquifer recharge, which can explain the observed lag between precipitation and flow maximum. It seems necessary to account for this reservoir as in (Decharme et al., 2008) to improve the Amazon discharge simulation. Another model shortcoming could also be an underestimation of the total soil depth over the Amazon basin as suggested by (Kleidon and Heimann, 1998).

5 Evaluation of wetland fraction against satellite data

5.1 Spatial distribution

In this section, we evaluate ORCHIDEE-TOP results with respects to remote sensing observations. Figure 4a compares the spatial distribution of the yearly mean fractional inundation from satellite (P_{10}) and the mean annual modelled wetland fraction (F_{wet}). Figure 4b gives the annual maximum fraction for the same variables (P_{10} , F_{wet}), all averaged over the 12 years regardless of the month of maximum. Given the caveats of comparing the absolute values of these different quantities, as explained in Sect. 3.2.2,

Modelling sub-grid wetland in the ORCHIDEE global land surface model

B. Ringeval et al.

[Title Page](#)

[Abstract](#)

[Introduction](#)

[Conclusions](#)

[References](#)

[Tables](#)

[Figures](#)



[Back](#)

[Close](#)

[Full Screen / Esc](#)

[Printer-friendly Version](#)

[Interactive Discussion](#)

we also ranked and separated each grid-cell into deciles in Fig. 4c. This allows us to compare the spatial distribution of the grid-cells that contribute most to the global signal. Maps are also given for F_{\max} (middle column). Table 3 gives also the Spearman correlation between the inundated fractions and F_{\max} (F_{wet}) at the annual maximum of all the grid-cells into each region defined in Fig. 2b and at global scale. This non-parametric correlation is preferred here to the Pearson correlation over the direct values of modelled fractions and P_{10} because it is compatible with the relative values, as expressed by percentiles. The histograms of P_{10} and F_{wet} spatial distributions at the annual maximum are given in Fig. 4d. Figure 5 shows the relative contribution (in percent) of each region of the TRANSCOM breakdown to the total area of P_{10} or F_{wet} , for the yearly mean (Fig. 5a), for the mean annual maximum regardless of month of maximum (Fig. 5b), for January (Fig. 5c), July (Fig. 5d) over 1993–2004.

Globally, the distribution of P_{10} in Fig. 4a, b, c shows key regions: the Ob plain, the Ganges plain in northern India and the regions of north-eastern Canada. This results in a high spatial variance (Fig. 5) between the different regions of the TRANSCOM breakdown at any time periods of the year (yearly, January or July). The distribution of F_{wet} in Fig. 4a shows more key regions that have a large contribution to the global maximum saturated area than P_{10} . Regions that contribute to global F_{wet} are more evenly distributed than for global P_{10} in Fig. 5. Therefore, F_{wet} has a lower between-regions spatial variability than P_{10} ($\text{std}_{P_{10}} > \text{std}_{F_{\text{wet}}}$). For instance during July, the two biggest contributing regions to global P_{10} represent more than 50 % of the global inundated area, against only 35 % for F_{\max} .

P_{10} shows significant fine-grained structure with grid-cells belonging to the highest percentiles-class (Fig. 4a, b, c). These structures are rather homogeneously distributed, and affect the river catchments of Volga, Mississippi and Amazon (Fig. 4a, b, c). The modelled F_{\max} distribution does not capture these fine-grained patterns (Fig. 4a, b, c). As a result, the histograms of P_{10} and F_{\max} spatial distributions look different (Fig. 4d). The grid-cells between the 0th and 30th P_{10} percentiles have an inundated fraction equal to zero (Fig. 4d). The median value of the distribution is close

to the mean for F_{\max} , but not for P_{10} , because the P_{10} field is more skewed towards low values (Fig. 4d). These differences could be linked to local differences in soil water holding capacity and water routing that are not resolved in ORCHIDEE-TOP, as well as sub-grid rainfall distributions, such as preferential convective rainfall over mountain regions, that may covary with the sub-grid distribution of flooded areas. The introduced parameterization leads to a fine-grained structure (Fig. 4a, b) and to a distribution (Fig. 4d) of the subgrid fraction more consistent with P_{10} . This suggests that a part of the differences between P_{10} and F_{\max} could be linked to intrinsic differences between inundation and ‘full bucket’ state of a soil in the model. For instance, inundation has more complex mechanisms than field capacity and saturation such as irrigation, damming, formation of ponds, flooding of impermeable soils, thus being spatially more heterogeneous over the globe. This can explain also the difference between regions observed for the Spearman correlation (Table 3).

Figure 5 shows differences in the contribution of some regions to global P_{10} and F_{wet} . Tropical Asia has a bigger contribution to P_{10} than to F_{wet} (Figs. 4a and 5). This region is strongly influenced by irrigation even after removing rice paddy areas, which is not accounted for in ORCHIDEE-TOP. Accounting for spatial variability in the soil water holding capacity (RU) into ORCHIDEE-TOP provides small holding capacities in this region that seems to prevent high-enough F_{wet} (Fig. S1). In contrast, grid-cells in the eastern United States have larger relative contributions to F_{wet} than to P_{10} (Fig. 4a). This may be because, in our modelling approach, we do not account for human activities, especially drainage, that may have lead to an estimated loss of 53% of the original wetlands in the United States (i.e. 200 yr ago) (Mistch and Gosselink, 2000). The greatest historical wetland losses occurred in the lower Mississippi alluvial plain and the prairie pothole region of the north central states (Mistch and Gosselink, 2000), just where F_{wet} is found to be larger than the inundation extents in P_{10} . Finally, we can see higher local F_{wet} contributions than P_{10} over the tropical South America in Fig. 4a. In this region, the flooding mechanism of floodplains and the routing of water are not accounted for in ORCHIDEE-TOP.

Modelling sub-grid wetland in the ORCHIDEE global land surface model

B. Ringeval et al.

[Title Page](#)[Abstract](#)[Introduction](#)[Conclusions](#)[References](#)[Tables](#)[Figures](#)[Back](#)[Close](#)[Full Screen / Esc](#)[Printer-friendly Version](#)[Interactive Discussion](#)

Modelling sub-grid wetland in the ORCHIDEE global land surface model

B. Ringeval et al.

[Title Page](#)

[Abstract](#)

[Introduction](#)

[Conclusions](#)

[References](#)

[Tables](#)

[Figures](#)

[⏪](#)

[⏩](#)

[◀](#)

[▶](#)

[Back](#)

[Close](#)

[Full Screen / Esc](#)

[Printer-friendly Version](#)

[Interactive Discussion](#)

The Spearman correlations between regional averages of P_{10} and F_{\max} (not shown) are close to the correlations between P_{10} and F_{wet} given in Fig. 5. This means that the introduced parameterization to deduce F_{wet} from F_{\max} has a small effect on the contribution of the different large regions to the global signal. However, it has a more significant effect on the distribution over the grid-cells in each TRANSCOM region: in the Table 3, the $\rho_{P_{10}, F_{\text{wet}}}$ correlation is lower than $\rho_{P_{10}, F_{\max}}$ for most regions.

The contribution of each region to global F_{wet} and P_{10} varies through the year (Fig. 5). The between-regions correlation $r_{P_{10}, F_{\text{wet}}}$ is higher for the different months and for the yearly mean (0.76, 0.80 and 0.82 for respectively the yearly mean, January and July) than for the yearly max (0.59). The between-region difference in spatial variance between P_{10} and F_{\max} is larger in July than in January, that is $|\text{std}_{P_{10}} - \text{std}_{F_{\text{wet}}}|_{\text{July}} > |\text{std}_{P_{10}} - \text{std}_{F_{\text{wet}}}|_{\text{January}}$. In January when soils are frozen in the Northern Hemisphere, the contribution of boreal Europe, Siberia and North-America regions to the total is negligible both for F_{wet} and P_{10} . This, and the fact that this is the dry season over Southern Asia and the Amazon, makes it easier to reproduce the relative contribution of each region to the total, hence the large value of $r_{P_{10}, F_{\text{wet}}}$ in Fig. 5.

5.2 Seasonal cycle

In this section we compare satellite P_{10} and simulated F_{wet} seasonal variability. Figure 6 shows the distribution of the most frequent month of maximum P_{10} and F_{wet} occurrence (Fig. 6a) and the lag in months that produced a maximum correlation of both P_{10} and F_{wet} with monthly precipitation (Fig. 6b). We find a good agreement between the timing of maximum values of P_{10} and F_{wet} (Fig. 6a). Indeed, the latitudinal gradient is well reproduced, except for tropical Asia where maximum F_{wet} lags maximum P_{10} by one month. For the northern Sahel region and central western Africa, F_{wet} also reaches its maximum after the one observed in the P_{10} satellite data. There is also good agreement between F_{wet} and observed P_{10} regarding the latitudinal gradient of the lag between inundation and precipitation (Fig. 6b). At high northern latitudes, this lag is likely explained by the lag between snowfall and snowmelt. We have large difficulties

in representing fine-scale structures seen in the lag of P_{10} over the Amazon, North America and temperate Eurasian region, where the link between precipitation and F_{wet} is stronger than the one observed between precipitation and P_{10} .

The mean seasonal cycle for each region of the TRANSCOM breakdown (Fig. 1) and for the globe is shown in Fig. 7. The seasonality of snowfall and rainfall is also shown. Each curve is normalized to unity by dividing each value by the yearly maximum averaged over the whole period except for the seasonal cycle of snowfall and the one of rainfall which are divided by the maximum of total precipitation (snowfall + rainfall). Precipitation, either in the form of rainfall or snow, is a forcing of ORCHIDEE-TOP. The agreement between the seasonal cycle of P_{10} and F_{wet} is expressed by the value of the Figure of Merit in Time (FMT) ((Hourdin et al., 1999; Krinner et al., 2005) and see Appendix A) given in each sub-panel of Fig. 8.

Overall, we obtain relatively high FMT values, yet with some discrepancies among regions. The FMT goes from 64.2% for North Europe up to 92.4% for Tropical Asia. Despite the probable influence of the rice paddies flooding and/or irrigation on the wetland extents in Tropical Asia, the seasonal cycle is well captured by ORCHIDEE-TOP. The FMT at global scale is at the bottom range of regional values, which is explained by the discrepancy between the contribution of each different region in global P_{10} and F_{wet} discussed above.

Over South America (Tropical and Temperate), we obtain a high value of FMT, due to the low amplitude of the seasonal cycle over these regions for both P_{10} and F_{wet} even though there is a discrepancy between the timing of maximum P_{10} and the one of F_{wet} , as seen in Fig. 7. In tropical South America, there is a lag of few months between P_{10} and rainfall, and a weak correlation between these two variables ($r = 0.03$). The correlation between P_{10} and rainfall increases to 0.60 at a 3 months lag. Using ORCHIDEE-TOP, we capture this lag between F_{wet} and rainfall, but it is underestimated for Tropical South America and over-estimated for Temperate South America. The underlying mechanisms are complex. Over the Parana region of temperate South America, inundation seems to be driven by upstream precipitation events (Prigent et al.,

Modelling sub-grid wetland in the ORCHIDEE global land surface model

B. Ringeval et al.

[Title Page](#)

[Abstract](#)

[Introduction](#)

[Conclusions](#)

[References](#)

[Tables](#)

[Figures](#)



[Back](#)

[Close](#)

[Full Screen / Esc](#)

[Printer-friendly Version](#)

[Interactive Discussion](#)



2007). Over the Amazon, the water residence time in floodplains and aquifer recharge may also play a role (Decharme et al., 2008).

Over boreal North America, northern Europe and boreal Eurasia, the match between the seasonal cycle of P_{10} and F_{wet} is good, despite lower FMT values than for tropical regions due to larger seasonal amplitude (Fig. 7). The seasonal cycle is longer for F_{wet} than for P_{10} (Fig. 7). The observed onset of the seasonal increase in satellite P_{10} is well captured by modelled F_{wet} for boreal Eurasia, but it occurs ~ 1 month too early for boreal North America and Europe. The termination of the F_{wet} seasonal cycle when soils freeze in autumn occurs one month too late in all three boreal regions. Some of the seasonal cycle phase differences between F_{wet} and P_{10} could be attributed to the poor resolution of vertical water distribution in ORCHIDEE-TOP that prevents a realistic simulation of the liquid soil water content. Moreover, flooding is one of the different processes that can lead to inundation (P_{10}) which is not accounted for in ORCHIDEE-TOP. The thickness criteria used to compute $F_{\text{wet}}^{\text{eff}}$ from F_{wet} (75 cm, see Eq. 4) have little influence on the length of the seasonal cycle of F_{wet} , e.g. FMT changes to 2% for Boreal Eurasia if the depth criteria changes from 75 cm to 1.2 m. The FMT between P_{10} and F_{wet} is higher than one between P_{10} and liquid soil water content (not given) precisely due to this depth criterion that excludes the contribution of liquid water located in the deep soil layers to the wetland formation. The high FMT (not shown) between rainfall (blue curve in Fig. 7) and P_{10} seasonal cycle (black curve in Fig. 7) for boreal regions is attributed to the fact that maximum rainfall occurs in summer, when the soils are not frozen at the surface, hence preventing complex lag effects of P_{10} to rainfall.

5.3 Interannual variability

Figure 8 compares the interannual variability of satellite P_{10} , modelled F_{wet} and snowfall + rainfall forcing. A 12 month moving average is applied to the monthly anomaly time series to remove the seasonal cycle. Anomalies are normalized first by dividing the time series of each region by its maximum value, and then removing the mean seasonal cycle over 1993–2004. The interannual correlation between P_{10} and F_{wet} over

Modelling sub-grid wetland in the ORCHIDEE global land surface model

B. Ringeval et al.

Title Page

Abstract

Introduction

Conclusions

References

Tables

Figures



Back

Close

Full Screen / Esc

Printer-friendly Version

Interactive Discussion



Modelling sub-grid wetland in the ORCHIDEE global land surface model

B. Ringeval et al.

[Title Page](#)

[Abstract](#)

[Introduction](#)

[Conclusions](#)

[References](#)

[Tables](#)

[Figures](#)

[⏪](#)

[⏩](#)

[◀](#)

[▶](#)

[Back](#)

[Close](#)

[Full Screen / Esc](#)

[Printer-friendly Version](#)

[Interactive Discussion](#)



the 12-yr period is given in each sub-panel of Fig. 8. There is a large variability for the inter-annual correlation (r) between P_{10} and F_{wet} among the regions with r going from -0.30 in Tropical Asia to 0.85 in Temperate Eurasia. Except for boreal regions where snow can create a delay between precipitation and water availability to saturate soils, the interannual correlation between F_{wet} and precipitation is always high (>0.54) in all regions. This is observed even in the tropical and temperate regions where correlation between F_{wet} and P_{10} is poor (<0.1). For instance, the correlation between F_{wet} and precipitation is equal to 0.81 over Tropical Asia and to 0.944 over Southern Africa. Simulated F_{wet} year-to-year variability is thus close to the one of precipitation variability, whereas the variability of P_{10} seems to be explained, at least in some regions, by other factors.

Note that the P_{10} data show a decrease in P_{10} in some regions (Temperate South America, North America, etc.) as well as at the global scale at the end of the 1990's. P_{10} captures well this decrease for regions where a coincident decrease of precipitation is also observed (North America), associated with the drought there (Hoerling and Kumar, 2003). However, in other regions (Temperate South America for instance) and at the global scale, the decrease observed in P_{10} is not associated with a decrease in precipitation. We assume that such changes in P_{10} could be attributed in part to anthropogenic influence. But, given the lack of independent observations at large scale and over many years to evaluate P_{10} , more investigations are needed to draw such conclusions. Therefore at global scale, as for the seasonal cycle, the poor ability of ORCHIDEE-TOP to match the year-to-year variability of P_{10} ($r = -0.47$) can be explained, at least partially, by some discrepancy in the contribution of the different regions (cf. 5.1).

6 Discussion

6.1 Discharge-to-flooding relationship for Siberian rivers

In the previous sections, we evaluated independently ORCHIDEE-TOP against both river discharge (an indirect validation of the entire hydrology) and satellite observations of flooded area (a more direct validation of saturation, despite differences between inundation and saturation). The seasonality of river flow and inundation are not independent. Hence, we focus the first point of this discussion on our potential ability to capture the relationship between river streamflow and inundation extent at the basin scale as well as the variability of this relationship from one basin to other. This will allow us to assess if the conclusions obtained through the two independent cross-validation datasets of discharge and satellite flooded area are consistent with each other. We focus on three large Siberian river basins where P_{10} was extensively evaluated against in situ river discharges, as well as in situ and satellite-derived snow water equivalent products. In particular, the relationships between snow, inundation, and runoff were studied by (Papa et al., 2007, 2008), showing significantly different behaviors between the Ob, Yenisey, and Lena basins.

In order to examine the capacity of ORCHIDEE-TOP to reproduce the regional relationships between inundation and riverflow over Siberian watersheds, the monthly climatology of inundation extent and discharge is shown in Fig. 9 (left) for both observations and simulations. Concerning the Yenisey basin that shows a large downstream/upstream gradient in inundation extent, we consider only the inundated/saturated area downstream of the gauging station. All the curves are normalized by their maxima. For each basin, we analyse the relationship between the river discharge on the one hand, and the satellite-derived inundation and simulated saturation fractions on the other hand (Fig. 9, right).

(Papa et al., 2008) observed an hysteresis between the seasonality of the discharge and flood extent, with variable degrees from one basin to other. While there is a large increase of both inundation and discharge when snow melting season starts over these

Modelling sub-grid wetland in the ORCHIDEE global land surface model

B. Ringeval et al.

[Title Page](#)

[Abstract](#)

[Introduction](#)

[Conclusions](#)

[References](#)

[Tables](#)

[Figures](#)



[Back](#)

[Close](#)

[Full Screen / Esc](#)

[Printer-friendly Version](#)

[Interactive Discussion](#)



Modelling sub-grid wetland in the ORCHIDEE global land surface model

B. Ringeval et al.

[Title Page](#)

[Abstract](#)

[Introduction](#)

[Conclusions](#)

[References](#)

[Tables](#)

[Figures](#)

[⏪](#)

[⏩](#)

[◀](#)

[▶](#)

[Back](#)

[Close](#)

[Full Screen / Esc](#)

[Printer-friendly Version](#)

[Interactive Discussion](#)



three basins, the relationship between discharge and inundated area during summer is different. Contrary to the Ob, the Yenisey and the Lena basins present a sharp decrease in the discharge while flood extent only slowly declines. This could be explained by an interruption of the connection between the river channel and the surrounding floodplains during the flood recession from July. Water that is ponding in the lowlands and is disconnected from the river channel only slowly disappears through evaporation and percolation during the summer period. The situation is different for the Ob River that has a large hydraulic network with high storage capacity (especially in the northern part) due to floodplains and less extensive permafrost coverage than the other two Russian watersheds. Figure 9 shows that ORCHIDEE-TOP is able to capture one important trait of the observed relationship between discharge and inundated area for Lena and Yenisey, namely the lag between recession of inundated area and discharge decrease in June. For both basins, we simulate too much delay between the maxima of saturation area and discharge, in comparison with the observed values. The timing of the flooding recession in F_{wet} area occurs also too late by ~ 1 month in comparison with observations. This disagreement in the flooding-to-discharge relationship can be explained, as mentioned before, by the intrinsic difference between what is observed (inundation) and what is modelled (wetland fraction). The flooding-to-discharge relationship is less well-captured for the Ob basin, however. The simulated discharge increase and inundated area decrease occur too early and too late, respectively (Fig. 10). That can be explained by the fact floodplains and delta formations are not simulated by the model or by a crude representation of snow, and thus of the snowmelt timing. (Papa et al., 2008) also explained the lags between maximum P_{10} and river discharge for the Ob River by ice jams in the river valley that contribute to delay between the peak of the discharge and the flooding maximum.

6.2 Suitability of TOPMODEL to simulate wetlands for CH_4 emissions modelling

Several studies used subgrid topographic information (Coe, 1998; Krinner, 2003) or TOPMODEL's concepts (Gedney and Cox, 2003) to diagnose wetlands extents at

global scale and their time variability. We focus the second point of this discussion on the suitability of TOPMODEL's concepts to simulate wetland areas at large spatial scale for modelling the associated CH₄ emissions.

Because wetlands have a considerable range of hydrologic conditions and because of their great variation in size, location, seasonality and human impact (Mistch and Gosselink, 2000), their definition is controversial (Reichardt, 1995). Nevertheless, they have many specific features, the most important being the presence of standing water for some period during the growing season either at the surface or within the root zone. The presence of unique chemical soil properties and organisms, especially vegetation, are consequences of saturated soils and resulting anaerobic conditions (Mistch and Gosselink, 2000). At the global scale, saturation seems mainly linked to geomorphology and climate (Mistch and Gosselink, 2000), corresponding well with the assumption used in TOPMODEL. Contrary to early subgrid parameterizations proposed by (Coe, 1998; Krinner, 2003), TOPMODEL does not need prescribed residence time of water and pre-dimensioned reservoirs. As a consequence, it offers the possibility of a more mechanistic representation of wetland.

6.2.1 Difficulty to simulate reasonable global wetland coverage

The coupling between ORCHIDEE and TOPMODEL as described in this study allows diagnosing the fraction at maximum soil water content. The simulated fractions are much larger than from the P_{10} dataset (Papa et al., 2010), which provides the distribution of inundated fraction (water-logged). These two variables are not comparable in absolute value. This problem does not arise from the coupling with TOPMODEL but underlines the necessity to have a more process-based model for the soil hydrology to simulate physically the wetland dynamics. This limitation is not linked to the size of the bucket but more to the physics used to represent the water fluxes in the soils. A two-layer bucket does not allow estimating the mean deficit to the saturation over each grid-cell. This problem in the absolute value of the contributing area explains also the degradation of the $\frac{Q_{sim}}{Q_{obs}}$ criteria for riverflow after coupling with TOPMODEL.

Modelling sub-grid wetland in the ORCHIDEE global land surface model

B. Ringeval et al.

[Title Page](#)

[Abstract](#)

[Introduction](#)

[Conclusions](#)

[References](#)

[Tables](#)

[Figures](#)



[Back](#)

[Close](#)

[Full Screen / Esc](#)

[Printer-friendly Version](#)

[Interactive Discussion](#)



This underlines the difficulty to simulate the absolute values of contributing areas and wetlands with a simple two-layer bucket even if a TOPMODEL approach is coupling with.

A possibility to improve the representation of the global water budget could be also to “play” with the computation of the evapotranspiration (ET) on the F_{\max} . The ET computation is not modified depending on the TOPMODEL/LSM coupling in (Decharme et al., 2006) while it is the case in this study (see Sect. 2.3) and in (Koster et al., 2000, Ducharne et al., 2000). The modification of ET computation feeds back on the soil water content and could lead to change both the riverflow magnitude ($Q_{\text{sim}}/Q_{\text{obs}}$ criteria) and the absolute value of F_{\max} . The mean ET over a given grid-cell could also be modified only depending on F_{wet} and not on F_{\max} , in a similar way as (Koster et al., 2000, Ducharne et al., 2000). These problems underline again the difficulties to correctly simulate the absolute value of the saturated/wetland areas (which contributes to Dunne runoff and on which ET is close to evapotranspiration) with a two-layer bucket model. However, both the spatial distribution of the wetlands areas and its time variability are rather well-captured.

It seems that the coupling of TOPMODEL with a more process-based LSM (MOSES) (Gedney and Cox, 2003) allowing to reach the saturation leads also to saturated areas that are much larger than the accepted wetlands inventories (Aselmann and Crutzen, 1989; Matthews and Fung, 1987; and now Prigent et al., 2007). As for F_{\max} , modelled saturated areas and inundated areas as given by (Prigent et al., 2007) are not comparable in absolute value. Saturated areas do not necessarily appear to satellites as free-water inundated area, making saturated areas smaller than inundated ones. Inundated area could locally be larger than saturated areas, if flooding corresponds to the presence of water on impermeable soil with no evident link to a saturated soil in depth. Moreover, the absolute inundated area fraction in the dataset is prone to uncertainties (Prigent et al., 2007) (see below). If these saturated areas simulated by a TOPMODEL/LSM are combined with wetland emissions models based on flux sites measurement (e.g. Walter et al., 2001), this will lead to overestimated global wetland

Modelling sub-grid wetland in the ORCHIDEE global land surface model

B. Ringeval et al.

[Title Page](#)

[Abstract](#)

[Introduction](#)

[Conclusions](#)

[References](#)

[Tables](#)

[Figures](#)



[Back](#)

[Close](#)

[Full Screen / Esc](#)

[Printer-friendly Version](#)

[Interactive Discussion](#)



**Modelling sub-grid
wetland in the
ORCHIDEE global
land surface model**

B. Ringeval et al.

[Title Page](#)[Abstract](#)[Introduction](#)[Conclusions](#)[References](#)[Tables](#)[Figures](#)[Back](#)[Close](#)[Full Screen / Esc](#)[Printer-friendly Version](#)[Interactive Discussion](#)

CH₄ emissions as compared to the accepted range of the contribution of wetland to global sources (Denman et al., 2007). This raises the question of the required hydrologic conditions (saturation versus inundation) to have wetlands that emit CH₄. To solve this issue, (Gedney and Cox, 2003) optimized a maximum critical topographic index to match the wetland inventory of (Aselmann and Crutzen, 1989). They assume that wetlands could be considered as areas of stagnant water, excluding all other areas where the water table could rise above the surface (i.e. where the local deficit < 0) and results in a significant flow. This strategy is possible because they used the classical approach of (Beven and Kirkby, 1979) where the local deficit could be negative. However, (Saulnier and Datin, 2004) have underlined an approximation in the (Beven and Kirkby, 1979) approach and suggested a formulation to correct the resulting bias. This corrected formulation is adopted in the present study: it consists in limiting the local deficit to positive values (see Appendix A of Decharme et al., 2006). Thus, the strategy of (Gedney and Cox, 2003) and the correct formulation of (Saulnier and Datin, 2004) are not consistent. (Kleinen et al., 2012) also introduces thresholds on the mean topographic index. This allows reproducing fine-grained structure suggested in the Sect. 5.1.

Another solution adopted by (Ringeval et al., 2011) is to calculate anomalies from the field capacity area given by TOPMODEL relatively to the (Prigent et al., 2007) data. This approach is not totally satisfying either due to different natures of the two products as explained before. In the present study, a parameterization consisting in a shift of the topographic index distribution is introduced (see Sect. 3.2.2) to match the global wetland coverage. This leads to more consistent spatial patterns with respect to the data. It is based on the assumption that the mean topographic index is prone to uncertainties (Ducharne, 2009) and hence could appear as a good alternative to the parameterizations introduced in (Kleinen et al., 2012) and (Gedney and Cox, 2003). Such a parameterization could also be tested with a more process based soil water model as in (Gedney and Cox, 2003). In all the cases, these types of parameterizations have small effects on the simulated time variability.

Finally, a better coupling between carbon and hydrology could be an alternative way to better constrain the wetland extent. In fact, soil carbon accumulates under anaerobic conditions and is necessary as a substrate for methanogenesis bacteria. The combination of subgrid topography used in TOPMODEL and subgrid soil carbon (e.g. IGBP-DIS data at 5 min resolution, Global Soil Data Task Group, 2000) could allow limiting spatially the wetland extent to the area with high soil carbon content.

6.2.2 Evaluation of modelled wetland extents

Even if multiple satellite approaches as in (Prigent et al., 2007) could be able to circumvent the problems mentioned by (Frey and Smith, 2007), they still have limitations. For instance, grid-cells with high soil carbon content representative to peatlands are not well-captured in P_{10} (R. Spahni, personal communication, 2010): peatlands are not necessarily free-surface waters and as consequence are not present in P_{10} . Moreover, as mentioned above, the absolute inundated area fraction in the P_{10} dataset is prone to uncertainties (Prigent et al., 2007). Satellite observations have difficulties in catching small, isolated water-saturated patches in largely dry areas, as well as small dry patches in largely wet areas. Along the coast, satellite products are also contaminated by ocean signals. Thus, regional inventories as (Peregon et al., 2008) closer to ground-truth should also be considered. Or, as done in the present study, the evaluation has to focus on the spatial and time variability.

Finally, evaluation of wetland extent should be coupled with the evaluation of wetland CH_4 emissions. Year-to-year variability in wetland extent seems to explain a large part of the variability in wetland CH_4 emissions (Ringeval et al., 2010). Thus, the evaluation of the variability in modelled emissions obtained using a TOPMODEL/LSM coupling is also a mean to evaluate the wetland dynamic. Evaluation of year-to-year variability in global CH_4 emissions could be done against top-down approach results (Bousquet et al., 2011; Ringeval et al., 2011) but are themselves prone to lots of uncertainties (Denman et al., 2007).

Modelling sub-grid wetland in the ORCHIDEE global land surface model

B. Ringeval et al.

[Title Page](#)

[Abstract](#)

[Introduction](#)

[Conclusions](#)

[References](#)

[Tables](#)

[Figures](#)



[Back](#)

[Close](#)

[Full Screen / Esc](#)

[Printer-friendly Version](#)

[Interactive Discussion](#)



6.2.3 Accounting for the water table depth

Improving the modelling of wetland CH₄ emissions using TOPMODEL/LSM is achieved through the representation of the water table depth (WTD). Current couplings between TOPMODEL and an LSM are restricted to simulation of areas where the WTD is at or above the soil surface. However, a wetland can emit CH₄ even if the WTD is under the soil surface.

The WTD is a key-variable by delimiting the extension of the anoxic soil zone (where CH₄ is produced) and of the overlying oxic one (where CH₄ is oxidized by methanotrophy) (Walter and Heimann, 2000). The WTD seems to act as an on-off switch (Christensen et al., 2003).

Although uncertainties remain about the sensibility of CH₄ emissions to WTD (Christensen et al., 2003; Updegraff et al., 2001), the value of the WTD at which no emissions occurs seems below the soil surface. Thus, it is necessary to account for both vertical and horizontal hydrological variability as underlined by (Bohn et al., 2010).

Improvements could be brought by associating not only a topographic index with saturation (λ_{sat} , see Appendix A of Decharme et al., 2006) but also some topographic index with different soil water deficit into each grid-cell. Nevertheless, such improvements brought to (Saulnier and Datin, 2004) formalism could not give information about the value of the WTD as soon as the WTD is above the soil surface (cf. 6.2.1). The thickness of the water layer above the soil surface determines yet the CH₄ oxidation intensity before it reaches the atmosphere (Walter and Heimann, 2000) and can be used to discriminate between lakes and wetlands (Coe, 1998; Krinner, 2003; de Noblet-Ducoudré et al., 2002).

6.2.4 Accounting for wetlands diversity

Finally, a global approach such as TOPMODEL does not give the possibility to model the hydrologic diversity in ecosystems covered by the term “wetlands”. First, TOPMODEL accounts only for wetlands developed from saturated soils by beneath and

GMDD

5, 683–735, 2012

Modelling sub-grid wetland in the ORCHIDEE global land surface model

B. Ringeval et al.

[Title Page](#)

[Abstract](#)

[Introduction](#)

[Conclusions](#)

[References](#)

[Tables](#)

[Figures](#)

[⏪](#)

[⏩](#)

[◀](#)

[▶](#)

[Back](#)

[Close](#)

[Full Screen / Esc](#)

[Printer-friendly Version](#)

[Interactive Discussion](#)



not from floodplains mechanisms or ombrotrophic bogs (i.e. wetland receiving water exclusively from precipitation and not influenced by groundwater). Then, even among the class of wetlands developed from saturation, the water recharge could be different and TOPMODEL cannot account for this diversity. The local recharge processes will partly determine the wetland productivity (ombrotrophic, connected fens/unconnected bogs) (Mistch and Gosselink, 2000), the substrate amount for methanogenesis, and finally CH₄ fluxes (Updegraff et al., 2001). Different approaches are exploring the possibility to include a statistical representation of the grid cell micro-topography within TOPMODEL and analyse its impact on the simulated saturated area. Also, addition of several PFTs could allow accounting for this diversity (Wania et al., 2009).

7 Conclusions

This study shows the impact of a soil freeze/thaw and TOPMODEL sub-grid scale parameterizations on global hydrological simulations performed with the ORCHIDEE LSM. First a classical comparison between modelled river discharge and observations at gauging station is conducted. Globally, the quality of the simulated discharge increases with accounting for freeze/thaw processes but is degraded after coupling with TOPMODEL in relationship to the difficulty to estimate the absolute value of the saturated areas. We suggest that over specific basins (Ob, Rio-Amazonas), the improvement is further limited because the LSM does not simulate floodplains. Second, an original evaluation of the coupling between TOPMODEL approach and a LSM is presented using remote sensing data (Papa et al., 2010). The satellite observations provide an estimate of the inundated extent whereas the model diagnoses the areas at maximum soil water content (F_{\max}). As a consequence, the model results cannot be validated in the absolute sense, but the consistency of the spatial and temporal variability of the two related estimates (inundation areas and F_{\max}) is carefully evaluated. A parameterization is also introduced to estimate the wetlands fractions from F_{\max} . Despite some difficulties in matching exact locations of individual inundated events,

Modelling sub-grid wetland in the ORCHIDEE global land surface model

B. Ringeval et al.

[Title Page](#)

[Abstract](#)

[Introduction](#)

[Conclusions](#)

[References](#)

[Tables](#)

[Figures](#)



[Back](#)

[Close](#)

[Full Screen / Esc](#)

[Printer-friendly Version](#)

[Interactive Discussion](#)



a good agreement is obtained in the spatial distribution of the inundation/saturation areas, into pre-defined world regions. The model reproduces the seasonality of the inundation correctly, but interannual variability is difficult to simulate, especially the decreasing trend observed in the inundated area in the late 90's. The two evaluations (against riverflow and remote-sensing data) are complementary, imposing strong constraints on the simulation at basin scale.

Appendix A

The Efficiency criterion (Eff) (Nash and Sutcliffe, 1970) is a measure of the model's ability to capture the monthly discharge dynamics. This skill score is defined as follows:

$$\text{Eff} = 1.0 - \frac{\sum (Q_{\text{sim}}(t) - Q_{\text{obs}}(t))^2}{\sum (Q_{\text{obs}}(t) - \overline{Q_{\text{obs}}})^2}$$
 where $\overline{Q_{\text{obs}}}$ represents the observed temporal mean. Eff

can be negative if the simulated discharge is very poor, is above 0.5 for a reasonable simulation, above 0.7 for a good one, and 1 for a perfect model (Boone et al., 2004)

The Figure of merit in Time (FMT) (Hourdin et al., 1999; Krinner et al., 2005) is defined as:

$$\text{FMT} = 100\% \frac{\sum_i \min(Q_{\text{sim}}(t), Q_{\text{obs}}(t))}{\sum_i \max(Q_{\text{sim}}(t), Q_{\text{obs}}(t))}$$



The publication of this article is financed by CNRS-INSU.

GMDD

5, 683–735, 2012

Modelling sub-grid wetland in the ORCHIDEE global land surface model

B. Ringeval et al.

[Title Page](#)

[Abstract](#)

[Introduction](#)

[Conclusions](#)

[References](#)

[Tables](#)

[Figures](#)



[Back](#)

[Close](#)

[Full Screen / Esc](#)

[Printer-friendly Version](#)

[Interactive Discussion](#)



References

- Alkama, R., Decharme, B., Douville, H., Becker, M., Cazenave, A., Sheffield, J., Voltaire, A., Tyteca, S., and Le Moigne, P.: Global Evaluation of the ISBA-TRIP Continental Hydrological System, Part I: Comparison to GRACE Terrestrial Water Storage Estimates and In Situ River Discharges, *J. Hydrometeorol.*, 11, 583–600, doi:10.1175/2010JHM1211.1., 2010.
- Armstrong, R. L. and Brodzik, M. J.: Northern Hemisphere EASE-Grid weekly snow cover and sea ice extent, version 3, Natl. Snow and Ice Data Cent., Boulder, Colorado, 2005.
- Aselmann, I. and Crutzen, P. J.: Global distribution of natural freshwater wetlands and rice paddies, their net primary productivity, seasonality and possible methane emissions, *J. Atmos. Chem.*, 8, 307–358, doi:10.1007/BF00052709, 1989.
- Beven, K. J. and Kirkby, M. J.: A physically based, variable contributing area model of basin hydrology, *Hydrolog. Sci. J.*, 24, 43–69, doi:10.1080/02626667909491834, 1979.
- Bloom, A., Palmer, P., Fraser, A., Reay, D. S., and Frankenberg, C.: Large-Scale Controls of Methanogenesis Inferred from Methane and Gravity Spaceborne Data, *Science*, 327, doi:10.1126/science.1175176, 2010.
- Bousquet, P., Ciais, P., Miller, J. B., Dlugokencky, E. J., Hauglustaine, D. A., Prigent, C., Van der Werf, G. R., Peylin, P., Brunke, E.-G., Carouge, C., Langenfelds, R. L., Lathire, J., Papa, F., Ramonet, M., Schmidt, M., Steele, L. P., Tyler, S. C., and White, J.: Contribution of anthropogenic and natural sources to atmospheric methane variability, *Nature*, 443, 439–443, doi:10.1038/nature05132, 2006.
- Bousquet, P., Ringeval, B., Pison, I., Dlugokencky, E. J., Brunke, E.-G., Carouge, C., Chevallier, F., Fortems-Cheiney, A., Frankenberg, C., Hauglustaine, D. A., Krummel, P. B., Langenfelds, R. L., Ramonet, M., Schmidt, M., Steele, L. P., Szopa, S., Yver, C., Viovy, N., and Ciais, P.: Source attribution of the changes in atmospheric methane for 2006–2008, *Atmos. Chem. Phys.*, 11, 3689–3700, doi:10.5194/acp-11-3689-2011, 2011.
- Christensen, T. R., Ekberg, A., Strom, L. and Mastepanov, M.: Factors controlling large scale variations in methane emissions from wetlands, *Geophys. Res. Lett.*, 30, 10–13, doi:10.1029/2002GL016848, 2003.
- Coe, M. T.: A linked global model of terrestrial hydrologic processes: Simulation of modern rivers, lakes and wetlands, *J. Geophys. Res.*, 103, 8885–8899, 1998.
- Coe, M. T.: Modeling Terrestrial Hydrological Systems at the Continental Scale: Testing the Accuracy of an Atmospheric GCM, *J. Climate*, 13, 686–704, doi:10.1175/1520-0442(2000)013,

GMDD

5, 683–735, 2012

Modelling sub-grid wetland in the ORCHIDEE global land surface model

B. Ringeval et al.

[Title Page](#)

[Abstract](#)

[Introduction](#)

[Conclusions](#)

[References](#)

[Tables](#)

[Figures](#)

[⏪](#)

[⏩](#)

[◀](#)

[▶](#)

[Back](#)

[Close](#)

[Full Screen / Esc](#)

[Printer-friendly Version](#)

[Interactive Discussion](#)



Modelling sub-grid wetland in the ORCHIDEE global land surface model

B. Ringeval et al.

[Title Page](#)[Abstract](#)[Introduction](#)[Conclusions](#)[References](#)[Tables](#)[Figures](#)[⏪](#)[⏩](#)[◀](#)[▶](#)[Back](#)[Close](#)[Full Screen / Esc](#)[Printer-friendly Version](#)[Interactive Discussion](#)

2000.

Cox, P. M., Betts, R. A., Bunton, C. B., Essery, R. L. H., Rowntree, P. R., and Smith, J.: The impact of new land surface physics on the GCM simulation of climate and climate sensitivity, *Clim. Dynam.*, 15, 183–203, doi:10.1007/s003820050276, 1999.

5 Crockford, R. H. and Richardson, D. P.: Partitioning of rainfall into throughfall, stemflow and interception: effect of forest type, ground cover and climate, *Hydrolog. Process.*, 14, 2903–2920, doi:10.1002/1099-1085(200011/12)14:16/17<2903::AID-HYP126>3.0.CO;2-6, 2000.

de Noblet-Ducoudré, N., Poutou, E., Chappellaz, J., Coe, M. and Krinner, G.: Indirect relationship between surface water budget and wetland extent, *Geophys. Res. Lett.*, 29, 10–13, doi:10.1029/2001GL013929, 2002.

10 de Rosnay, P. and Polcher, J.: Modelling root water uptake in a complex land surface scheme coupled to a GCM, *Hydrol. Earth Syst. Sci.*, 2, 239–255, doi:10.5194/hess-2-239-1998, 1998.

Decharme, B. and Douville, H.: Introduction of a sub-grid hydrology in the ISBA land surface model, *Clim. Dynam.*, 26, 65–78, doi:10.1007/s00382-005-0059-7, 2005.

Decharme, B. and Douville, H.: Global validation of the ISBA sub-grid hydrology, *Clim. Dynam.*, 29, 21–37, doi:10.1007/s00382-006-0216-7, 2007.

Decharme, B., Douville, H., Boone, A., Habets, F. and Noilhan, J.: Impact of an Exponential Profile of Saturated Hydraulic Conductivity within the ISBA LSM: Simulations over the Rhône Basin, *J. Hydrometeorol.*, 7, 61, doi:10.1175/JHM469.1, 2006.

20 Decharme, B., Douville, H., Prigent, C., Papa, F., and Aires, F.: A new river flooding scheme for global climate applications: Off-line evaluation over South America, *J. Geophys. Res.*, 113, 1–11, doi:10.1029/2007JD009376, 2008.

Denman, K. L., Brasseur, G., Chidthaisong, A., Ciais, P., Cox, P. M., Dickinson, R. E., Hauglustaine, D., Heinze, C., Holland, E., Jacob, D., Lohmann, U., Ramachandran, S., da Silva Dias, P. L., Wofsy, S. C., and Zhang, X.: Couplings Between Changes in the Climate System and Biogeochemistry, in: *Climate Change 2007: The Physical Science Basis. Contribution of Working Group I to the Fourth Assessment Report of the Intergovernmental Panel on Climate Change*, edited by: U. Cambridge University Press, Cambridge, UK and New York, NY, 2007.

30 Ducharne, A.: Reducing scale dependence in TOPMODEL using a dimensionless topographic index, *Hydrol. Earth Syst. Sci.*, 13, 2399–2412, doi:10.5194/hess-13-2399-2009, 2009.

Modelling sub-grid wetland in the ORCHIDEE global land surface model

B. Ringeval et al.

[Title Page](#)

[Abstract](#)

[Introduction](#)

[Conclusions](#)

[References](#)

[Tables](#)

[Figures](#)

[⏪](#)

[⏩](#)

[◀](#)

[▶](#)

[Back](#)

[Close](#)

[Full Screen / Esc](#)

[Printer-friendly Version](#)

[Interactive Discussion](#)



Ducharne, A. and Laval, K.: Influence of the Realistic Description of Soil Water-Holding Capacity on the Global Water Cycle in a GCM, *J. Climate*, 13, 4393–4413, doi:10.1175/1520-0442(2000)013<4393:IOTRDO>2.0.CO;2, 2000.

Ducoudré, N., Laval, K., and Perrier, A.: SECHIBA, a new set of parameterizations of the hydrologic exchanges at the land-atmosphere interface within the LMD atmospheric general circulation model, *J. Climate*, 248–273, doi:10.1175/1520-0442(1993)006<0248:SANSOP>2.0.CO;2, 1993.

Farouki, O.: The thermal properties of soils in cold regions, *Cold Reg. Sci Technol.*, 5, 67–75, 1981.

Forster, P., Ramaswamy, V., Artaxo, P., Bernsten, T., Betts, R., Fahey, D. W., Haywood, J., Lean, J. Lowe, D. C., Myhre, G., Nganga, J., Prinn, R., Raga, G., Schulz, M., and Van Dorland, R.: Changes in atmospheric constituents and in radiative forcing, in: *Climate Change 2007: The Physical Science Basis, Contribution of Working Group I to the Fourth Assessment Report of the Intergovernmental Panel on Climate Change*, in Cambridge University Press, Cambridge, UK and New York, NY, USA, 2007.

Frey, K. E. and Smith, L. C.: How well do we know northern land cover? Comparison of four global vegetation and wetland products with a new ground-truth database for West Siberia, *Global Biogeochem. Cy.*, 21, doi:10.1029/2006GB002706, 2007.

Gedney, N. and Cox, P. M.: The Sensitivity of Global Climate Model Simulations to the Representation of Soil Moisture Heterogeneity, *J. Hydrometeorol.*, 4, 1265, doi:10.1175/1525-7541(2003)004, 2003.

Global Soil Data Task Group: Global Gridded Surfaces of Selected Soil Characteristics (IGBP-DIS). [Global Gridded Surfaces of Selected Soil Characteristics (International Geosphere-Biosphere Programme – Data and Information System)], Data set, <http://www.daac.ornl.gov> from Oak Ridge National Laboratory Distributed Active Archive Center, Oak Ridge, Tennessee, USA, doi:10.3334/ORNLDAAAC/569, 2000.

Guo, Z., Dirmeyer, P., Gao, X., and Zhao, M.: Improving the quality of simulated soil moisture with a multi-model ensemble approach, *Q. J. Roy. Meteor. SOC.*, 747(April), 731–747, doi:10.1002/qj.48, 2007.

Habets, F. and Saulnier, G.: Subgrid runoff parameterization, *Phys. Chem. Earth Pt. B*, 26, 455–459, doi:10.1016/S1464-1909(01)00034-X, 2001.

Hourdin, F., Issartel, J. P., Cabrit, B., and Idekadi, A.: Reciprocity of atmospheric transport of trace species, *C. R. Acad. Sci.*, 329, 623–628, 1999.

Modelling sub-grid wetland in the ORCHIDEE global land surface model

B. Ringeval et al.

[Title Page](#)[Abstract](#)[Introduction](#)[Conclusions](#)[References](#)[Tables](#)[Figures](#)[⏪](#)[⏩](#)[◀](#)[▶](#)[Back](#)[Close](#)[Full Screen / Esc](#)[Printer-friendly Version](#)[Interactive Discussion](#)

Kleidon, A. and Heimann, M.: A method of determining rooting depth from a terrestrial biosphere model and its impacts on the global water and carbon cycle, *Glob. Change Biol.*, 4, 275–286, doi:10.1046/j.1365-2486.1998.00152.x, 1998.

5 Kleinen, T., Brovkin, V., and Schuldt, R. J.: A dynamic model of wetland extent and peat accumulation: results for the Holocene, *Biogeosciences*, 9, 235–248, doi:10.5194/bg-9-235-2012, 2012.

Krinner, G.: Impact of lakes and wetlands on boreal climate, *J. Geophys. Res.*, 108, doi:10.1029/2002JD002597, 2003.

10 Krinner, G., Viovy, N., de Noblet-Ducoudré, N., Ogée, J., Polcher, J., Friedlingstein, P., Ciais, P., Sitch, S., and Prentice, I. C.: A dynamic global vegetation model for studies of the coupled atmosphere-biosphere system, *Global Biogeochem. Cy.*, 19, doi:10.1029/2003GB002199, 2005.

Lawrence, D. M. and Slater, A. G.: Incorporating organic soil into a global climate model, *Clim. Dynam.*, 30, 145–160, doi:10.1007/s00382-007-0278-1, 2007.

15 Loveland, T. R., Reed, B. C., Brown, J. F., Ohlen, D. O., Zhu, Z., Yang, L., and Merchant, A. J. W.: Development of a global land cover characteristics database and IGBP DISCover from 1 km AVHRR data, *Int. J. Remote Sens.*, 21, 1303–1330, 2000.

Manabe, S.: Climate and the ocean circulation 1. The atmospheric circulation and the hydrology of the Earth' surface, *Mon. Weather Rev.*, 97, 1969.

20 Matthews, E. and Fung, I.: Methane Emission From Natural Wetlands: Global Distribution, Area, and Environmental Characteristics of Sources, *Glob. Biogeochem. Cy.*, 1, 61–86, 1987.

McMurtrie, R., Rook, D., and Kelliher, F.: Modeling the yield of Pinus-Radiata o a site limited by water and nitrogen, *Forest Ecol. Manag.*, 30, 381–413, 1990.

25 Mistch, W. J. and Gosselink, J. G.: *Wetlands*, 3rd ed., edited by: Wiley, J. and Hoboken, N. J., 2000.

Nash, J. and Sutcliff, J.: River flow forecasting through conceptual models, 1, A discussion of principales, *J. Hydrol.*, 10, 282–290, 1970.

30 Ngo-Duc, T., Polcher, J., and Laval, K.: A 53-year forcing data set for land surface models, *J. Geophys. Res.*, 110, 1–13, doi:10.1029/2004JD005434, 2005.

Noilhan, J. and Lacarrere, P.: GCM grid-scale evaporation from mesoscale modeling, *J. Climate*, 8, 206–223, 1995.

Modelling sub-grid wetland in the ORCHIDEE global land surface model

B. Ringeval et al.

[Title Page](#)

[Abstract](#)

[Introduction](#)

[Conclusions](#)

[References](#)

[Tables](#)

[Figures](#)

[⏪](#)

[⏩](#)

[◀](#)

[▶](#)

[Back](#)

[Close](#)

[Full Screen / Esc](#)

[Printer-friendly Version](#)

[Interactive Discussion](#)

Papa, F., Prigent, C., and Rossow, W. B.: Ob' River flood inundations from satellite observations: A relationship with winter snow parameters and river runoff, *J. Geophys. Res.*, 112, 1–11, doi:10.1029/2007JD008451, 2007.

Papa, F., Prigent, C., and Rossow, W. B.: Monitoring Flood and Discharge Variations in the Large Siberian Rivers From a Multi-Satellite Technique, *Surv. Geophys.*, 29, 297–317, doi:10.1007/s10712-008-9036-0, 2008.

Papa, F., Prigent, C., Aires, F., Jimenez, C., Rossow, W. B., and Matthews, E.: Interannual variability of surface water extent at the global scale, 1993–2004, *J. Geophys. Res.*, 115, 1–17, doi:10.1029/2009JD012674, 2010.

Papa, F., Prigent, C., Durand, F., and Rossow, W. B.: Wetland dynamics using a suite of satellite observations: A case study of application and evaluation for the Indian Subcontinent, *Geophys. Res. Lett.*, 33, 5–8, doi:10.1029/2006GL025767, 2006.

Peregón, A., Maksyutov, S., Kosykh, N. P., and Mironycheva-Tokareva, N. P.: Map-based inventory of wetland biomass and net primary production in western Siberia, *J. Geophys. Res.*, 113, 1–12, doi:10.1029/2007JG000441, 2008.

Poutou, E., Krinner, G., Genthon, C., and de Noblet-Ducoudré, N.: Role of soil freezing in future boreal climate change, *Clim. Dynam.*, 23, 621–639, doi:10.1007/s00382-004-0459-0, 2004.

Prigent, C., Matthews, E., Aires, F. and Rossow, W. B.: Remote sensing of global wetland dynamics with multiple satellite data sets, *Geophys. Res. Lett.*, 28, 4631, doi:10.1029/2001GL013263, 2001.

Prigent, C., Papa, F., Aires, F., Rossow, W. B., and Matthews, E.: Global inundation dynamics inferred from multiple satellite observations, 1993–2000, *J. Geophys. Res.*, 112, 1–13, doi:10.1029/2006JD007847, 2007.

Reichardt, T.: Academy under fire on “wetlands” definition, *Nature*, 1990.

Riley, W. J., Subin, Z. M., Lawrence, D. M., Swenson, S. C., Torn, M. S., Meng, L., Mahowald, N. M., and Hess, P.: Barriers to predicting changes in global terrestrial methane fluxes: analyses using CLM4Me, a methane biogeochemistry model integrated in CESM, *Biogeosciences*, 8, 1925–1953, doi:10.5194/bg-8-1925-2011, 2011.

Ringeval, B., Friedlingstein, P., Koven, C., Ciais, P., de Noblet-Ducoudré, N., Decharme, B. and Cadule, P.: Ringeval, B., Friedlingstein, P., Koven, C., Ciais, P., de Noblet-Ducoudré, N., Decharme, B., and Cadule, P.: Climate-CH₄ feedback from wetlands and its interaction with the climate-CO₂ feedback, *Biogeosciences*, 8, 2137–2157, doi:10.5194/bg-8-2137-2011, 2011.

Modelling sub-grid wetland in the ORCHIDEE global land surface model

B. Ringeval et al.

[Title Page](#)[Abstract](#)[Introduction](#)[Conclusions](#)[References](#)[Tables](#)[Figures](#)[⏪](#)[⏩](#)[◀](#)[▶](#)[Back](#)[Close](#)[Full Screen / Esc](#)[Printer-friendly Version](#)[Interactive Discussion](#)

- Ringeval, B., de Noblet-Ducoudré, N., Ciais, P., Bousquet, P., Prigent, C., Papa, F., and Rossow, W. B.: An attempt to quantify the impact of changes in wetland extent on methane emissions on the seasonal and interannual time scales, *Global Biogeochem. Cy.*, 24, 1–12, doi:10.1029/2008GB003354, 2010.
- 5 Saulnier, G.-M. and Datin, R.: Analytical solution to a bias in the TOPMODEL framework balance, *Hydrolog. Process.*, 18, 1195–1218, doi:10.1002/hyp.1346, 2004.
- Schumann, G., Lunt, D. J., Valdes, P. J., de Jeu, R. A. M., Scipal, K., and Bates, P. D.: Assessment of soil moisture fields from imperfect climate models with uncertain satellite observations, *Hydrol. Earth Syst. Sci.*, 13, 1545–1553, doi:10.5194/hess-13-1545-2009, 2009.
- 10 Seneviratne, S. I., Lüthi, D., Litschi, M. and Schär, C.: Land-atmosphere coupling and climate change in Europe, *Nature*, 443, 205–209, doi:10.1038/nature05095, 2006.
- Siebert, S., Döll, P., Hoogeveen, J., Faures, J.-M., Frenken, K., and Feick, S.: Development and validation of the global map of irrigation areas, *Hydrol. Earth Syst. Sci.*, 9, 535–547, doi:10.5194/hess-9-535-2005, 2005.
- 15 Sivapalan, M., Beven, K., and Wood, E.: On hydrologic similarity 2. A scaled model of storm runoff production, *Water Resour. Res.*, 23, 2266–2278, 1987.
- Sterling, S. and Ducharne, A.: Comprehensive data set of global land cover change for land surface model applications, *Global Biogeochem. Cy.*, 22, doi:10.1029/2007GB002959, 2008.
- Takata, K. and Kimoto, M.: A numerical study on the impact of soil freezing on the continental-scale seasonal cycle, *J. Meteorol. Soc. Jpn.*, 78, 199–221, 2000.
- 20 Teuling, A.J., Hirschi, M., Ohmura, A., Wild, M., Reichstein, M., Ciais, P., Buchmann, N., Ammann, C., Montagnani, L., Richardson, A.D., Wohlfahrt, G., and Seneviratne, S. I.: A regional perspective on trends in continental evaporation, *Geophys. Res. Lett.*, 36, 1–5, doi:10.1029/2008GL036584, 2009.
- 25 Updegraff, K., Bridgman, S. D., Pastor, J., Weishampel, P., and Harth, C.: Response of CO₂ and CH₄ emissions from peatlands to warming and water table manipulation, *Ecol. Appl.*, 11, 311–326, 2001.
- Walter, B. and Heimann, M.: A process-based, climate-sensitive model to derive methane emissions from natural wetlands: Application to five wetland sites, sensitivity to model parameters, *Global Biogeochem. Cy.*, 14, 745–765, 2000.
- 30 Wania, R., Ross, I., and Prentice, I. C.: Integrating peatlands and permafrost into a dynamic global vegetation model: 1. Evaluation and sensitivity of physical land surface processes, *Global Biogeochem. Cy.*, 23, 1–19, doi:10.1029/2008GB003412, 2009.

Weglarczyk, S.: The interdependence and applicability of some statistical quality measures for hydrological models, *J. Hydrol.*, 206, 98–103, 1998.

Wood, E., Lettenmaier, D., Liang, X., Lohmann, D., Boone, A., Chang, S., and Chen, F.: The Project for Intercomparison of Land-surface Parameterization Schemes (PILPS) Phase 2(c) Red-Arkansas River basin experiment: 1. Experiment description and summary intercomparisons, *Global Planet. Change*, 19, 115–135, doi:10.1016/S0921-8181(98)00044-7, 1998.

Zobler, L.: Global Soil Types, 1Degree Grid (Zobler), data set, Oak Ridge Natl. Lab. Distrib. Act. Arch. Cent., Oak Ridge, Tenn., <http://www.daac.ornl.gov>, doi:10.3334/ORNLDAAC/418, 1999.

GMDD

5, 683–735, 2012

Modelling sub-grid wetland in the ORCHIDEE global land surface model

B. Ringeval et al.

Title Page

Abstract

Introduction

Conclusions

References

Tables

Figures



Back

Close

Full Screen / Esc

Printer-friendly Version

Interactive Discussion



Modelling sub-grid wetland in the ORCHIDEE global land surface model

B. Ringeval et al.

Table 1. Ways to compute surface runoff and drainage in the different ORCHIDEE versions d_r is the overflow runoff, simply defined as the excess water when the soil is over its maximum capacity.

	ORCHIDEE	ORCHIDEE-FRZ	ORCHIDEE-TOP
Surface runoff	$5\% \cdot d_r$	$5\% \cdot d_r + R_{\text{froz}}$	$F_{\text{max}}^{\text{eff}} \cdot P_g + (1 - F_{\text{max}}^{\text{eff}}) \cdot R_{\text{froz}}$
Drainage	$95\% \cdot d_r$	$95\% \cdot d_r$	d_r

[Title Page](#)
[Abstract](#)
[Introduction](#)
[Conclusions](#)
[References](#)
[Tables](#)
[Figures](#)




[Back](#)
[Close](#)
[Full Screen / Esc](#)
[Printer-friendly Version](#)
[Interactive Discussion](#)


Modelling sub-grid wetland in the ORCHIDEE global land surface model

B. Ringeval et al.

Table 2. Skill score for simulated discharges by ORCHIDEE (black), ORCHIDEE-FRZ (green) and ORCHIDEE-TOP (red) over the 7 rivers given in Fig. 3. The ratio between simulated and observed annual mean discharges ($\overline{Q_{\text{sim}}}/\overline{Q_{\text{obs}}}$) and the monthly efficiencies (Eff) (calculated over the whole discharge observation period given in Fig. 4, right panel) are given as well as the correlation (r) and RMSE (in $\text{m}^3 \text{s}^{-1}$) between simulated and observed monthly anomalies.

	ORCHIDEE	ORCHIDEE-FRZ	ORCHIDEE-TOP	
$Q_{\text{simul}}/Q_{\text{obs}}$	0.76	1	0.43	Yenisey (Igarka)
eff	0.53	0.5	0.45	
r^2	0.46	0.54	0.67	
RMSE	7262	6929	6568	
$Q_{\text{simul}}/Q_{\text{obs}}$	1.2	1.45	0.72	
eff	0.52	-2.46	-0.83	
r^2	0.51	0.03	0.19	
RMSE	3793	7950	5179	
$Q_{\text{simul}}/Q_{\text{obs}}$	1.16	1.48	0.41	Amur (Kosomlski)
eff	-0.16	-0.4	-0.1	
r^2	0.56	0.5	0.27	
RMSE	2021	2342	1603	
$Q_{\text{simul}}/Q_{\text{obs}}$	1.24	1.23	0.57	Danube (Ceatal Izmail)
eff	-0.16	-0.81	-0.98	
r^2	0.79	0.76	0.78	
RMSE	1417	1465	1000	
$Q_{\text{simul}}/Q_{\text{obs}}$	1.35	1.38	0.57	Mississippi (Vicksburg)
eff	0.05	0.01	-0.11	
r^2	0.77	0.78	0.87	
RMSE	4028	3962	3693	
$Q_{\text{simul}}/Q_{\text{obs}}$	1.64	1.7	1	Ganges (Hardinge Bridge)
eff	0.21	0.19	0.7	
r^2	0.38	0.38	0.56	
RMSE	7959	7959	7191	
$Q_{\text{simul}}/Q_{\text{obs}}$	1.04	1.04	0.66	Rio-Amazonas (Obidos)
eff	0.7	0.7	-1.72	
r^2	0.74	0.74	0.41	
RMSE	19 402	19 402	44 708	

[Title Page](#)
[Abstract](#)
[Introduction](#)
[Conclusions](#)
[References](#)
[Tables](#)
[Figures](#)
[Back](#)
[Close](#)
[Full Screen / Esc](#)
[Printer-friendly Version](#)
[Interactive Discussion](#)

Modelling sub-grid wetland in the ORCHIDEE global land surface model

B. Ringeval et al.

Table 3. Spearman correlation ($\rho_{P_{10}, F_{\max}}$) between the inundated (P_{10}) and fractions at maximum soil water content (F_{\max}) at the annual maximum (regardless of the month of maximum) of the grid-cells contained in each region defined in Fig. 2b and at global scale. Similar correlations for F_{wet} are indicated in brackets.

	$\rho_{P_{10}, F_{\max}}$ ($\rho_{P_{10}, F_{\text{wet}}}$)
1 Boreal North America	0.45 (0.17)
2 North Europa	0.38 (0.24)
3 Boreal Eurasian	0.48 (0.14)
4 North America	0.44 (0.27)
5 South Europa	0.27 (0.13)
6 Temperate Eurasian	0.62 (0.53)
7 Tropical South America	−0.30 (−0.09)
8 Northern Africa	0.74 (0.77)
9 Tropical Asia	0.40 (0.1)
10 Temperate South America	0.24 (0.21)
11 Southern Africa	0.09 (0.06)
Global	0.49 (0.36)

Title Page

Abstract

Introduction

Conclusions

References

Tables

Figures

⏪

⏩

◀

▶

Back

Close

Full Screen / Esc

Printer-friendly Version

Interactive Discussion

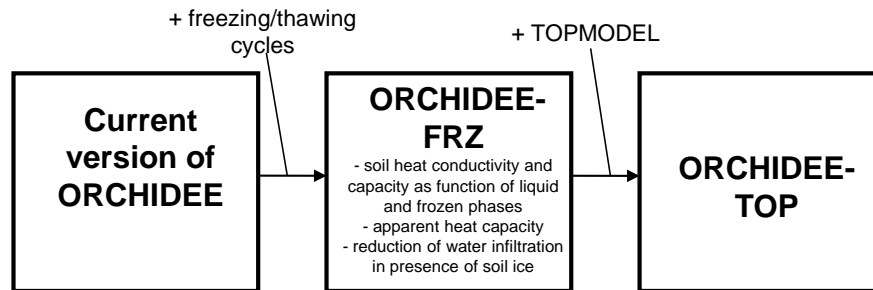


Fig. 1. Flow-chart of the different developments brought to the ORCHIDEE model.

Modelling sub-grid wetland in the ORCHIDEE global land surface model

B. Ringeval et al.

[Title Page](#)

[Abstract](#) [Introduction](#)

[Conclusions](#) [References](#)

[Tables](#) [Figures](#)

[⏪](#) [⏩](#)

[◀](#) [▶](#)

[Back](#) [Close](#)

[Full Screen / Esc](#)

[Printer-friendly Version](#)

[Interactive Discussion](#)



Modelling sub-grid wetland in the ORCHIDEE global land surface model

B. Ringeval et al.

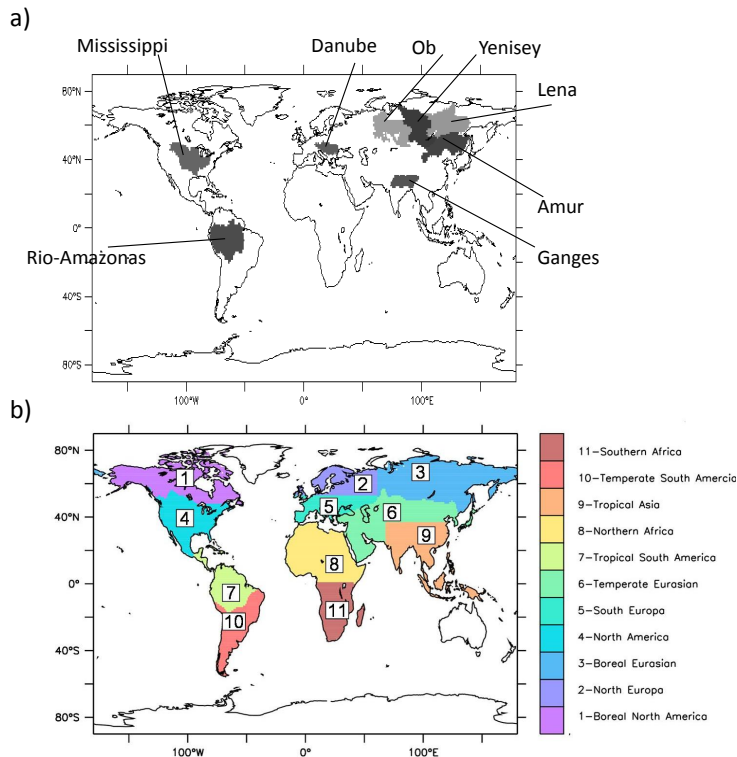


Fig. 2. (a) Map of the river basins considered in this study and (b) global breakdown into 11 regions inspired from the TRANSCOM atmospheric transport models intercomparison study (Gurney et al., 2002).

[Title Page](#)

[Abstract](#)

[Introduction](#)

[Conclusions](#)

[References](#)

[Tables](#)

[Figures](#)



[Back](#)

[Close](#)

[Full Screen / Esc](#)

[Printer-friendly Version](#)

[Interactive Discussion](#)



Modelling sub-grid wetland in the ORCHIDEE global land surface model

B. Ringeval et al.

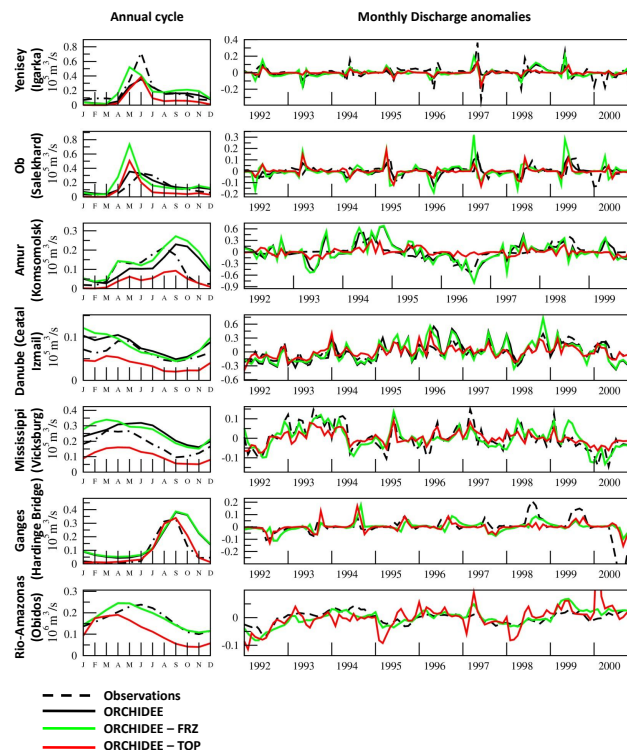


Fig. 3. Mean annual cycle (left) and time series of monthly anomalies (right) for simulated and observed discharges over the Yenisey, the Ob, the Amur, the Danube, the Mississippi, the Ganges and the Amazon. Simulated discharges are given for ORCHIDEE (black), ORCHIDEE-FRZ (green) and ORCHIDEE-TOP (red). Values of the skill score for each simulation using the different criteria are reported into Table 2.

Title Page

Abstract

Introduction

Conclusions

References

Tables

Figures



Back

Close

Full Screen / Esc

Printer-friendly Version

Interactive Discussion

Modelling sub-grid wetland in the ORCHIDEE global land surface model

B. Ringeval et al.

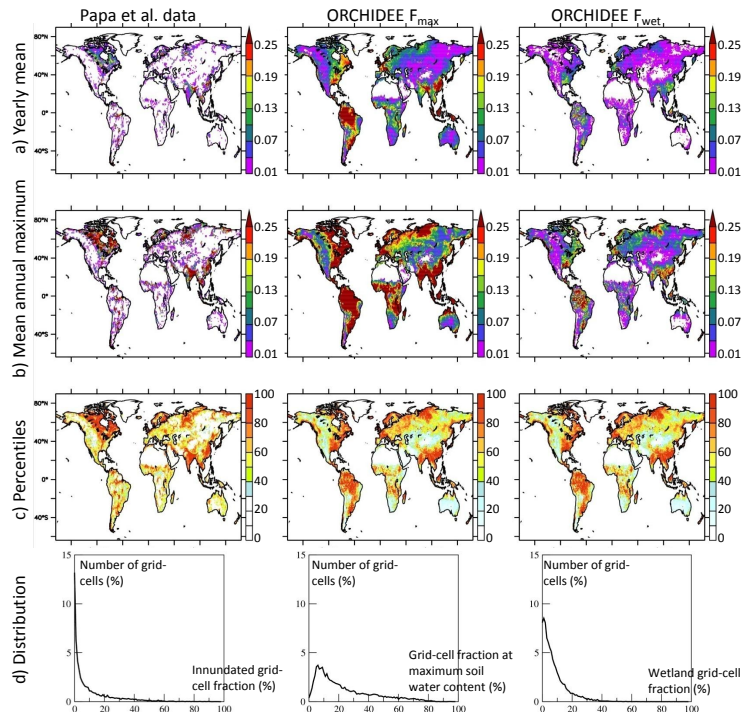


Fig. 4. For P_{10} (left column), F_{\max} (middle) and F_{wet} (right), **(a)** Yearly mean over 1993–2004. **(b)** Annual maximum fractional inundation averaged over the 12 years regardless of the month of maximum. **(c)** Same as **(b)** but each grid-cell is coloured according to its belonging to ten percentiles classes. For P_{10} (left panel), the values of the 10th, the 20th and the 30th percentiles are the same (=0); thus a same colour. **(d)** Distribution of the grid-cell inundated/maximum soil water content/wetland fractions at annual maximum for respectively $P_{10}/F_{\max}/F_{\text{wet}}$ at the annual maximum regardless the month of maximum.

[Title Page](#)
[Abstract](#)
[Introduction](#)
[Conclusions](#)
[References](#)
[Tables](#)
[Figures](#)
[⏪](#)
[⏩](#)
[◀](#)
[▶](#)
[Back](#)
[Close](#)
[Full Screen / Esc](#)
[Printer-friendly Version](#)
[Interactive Discussion](#)

Modelling sub-grid wetland in the ORCHIDEE global land surface model

B. Ringeval et al.

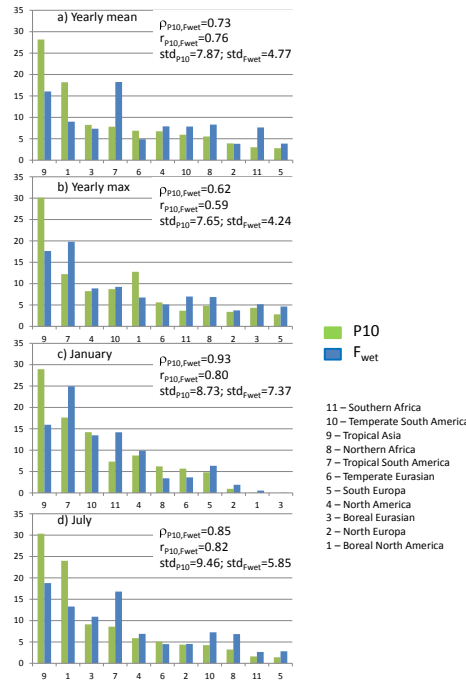


Fig. 5. Relative contribution of each region (see Fig. 2 for the regions definition) to the global inundated/saturated area, both for the yearly mean **(a)**, for annual maximum **(b)**, mean January **(c)** and mean July **(d)** over 1993–2004. For each part of the Fig. 5, the regions are ranged in descending order of contribution to global inundation (P_{10}). The Pearson (Spearman) correlation between the global distribution among the different regions of P_{10} and F_{wet} , $r_{P_{10}, F_{wet}}$ ($\rho_{P_{10}, F_{wet}}$), is also given for each Fig. part (a, b, c, and d). The spatial standard deviation among the different regions for P_{10} and F_{wet} ($std_{P_{10}}$ and $std_{F_{wet}}$ respectively) is indicated for a, b, c and d.

Title Page

Abstract Introduction

Conclusions References

Tables Figures

⏪ ⏩

◀ ▶

Back Close

Full Screen / Esc

Printer-friendly Version

Interactive Discussion



Modelling sub-grid wetland in the ORCHIDEE global land surface model

B. Ringeval et al.

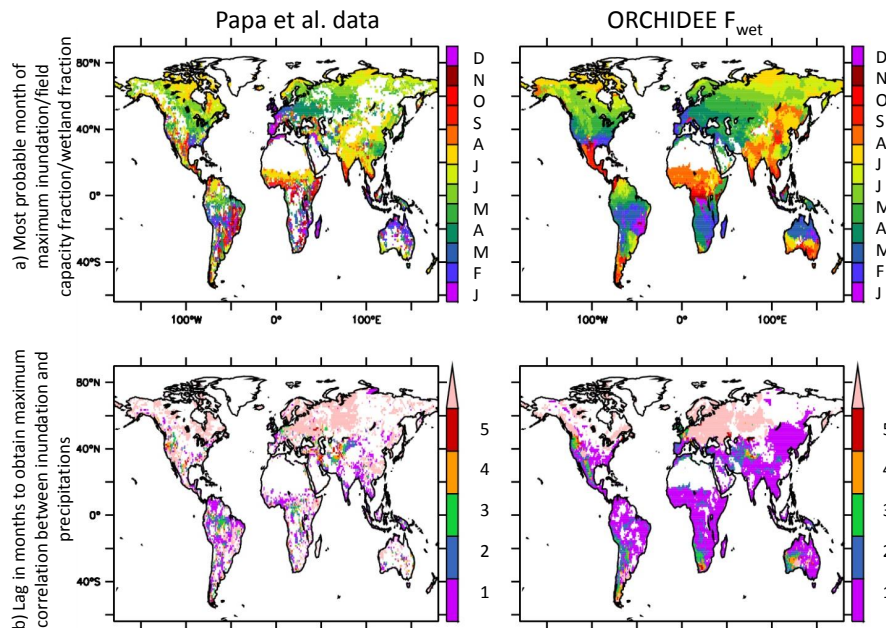


Fig. 6. Spatial distribution of the most probable month of maximum inundation/saturation **(a)** and relationship between the time variation of inundation/saturation and one of precipitation **(b)**. Grid-cells whose seasonal amplitude is too weak are masked for **(a)**. **(b)** displays the lag in month to obtain the maximum correlation between inundation/precipitation and the precipitation.

Title Page

Abstract

Introduction

Conclusions

References

Tables

Figures



Back

Close

Full Screen / Esc

Printer-friendly Version

Interactive Discussion

Modelling sub-grid wetland in the ORCHIDEE global land surface model

B. Ringeval et al.

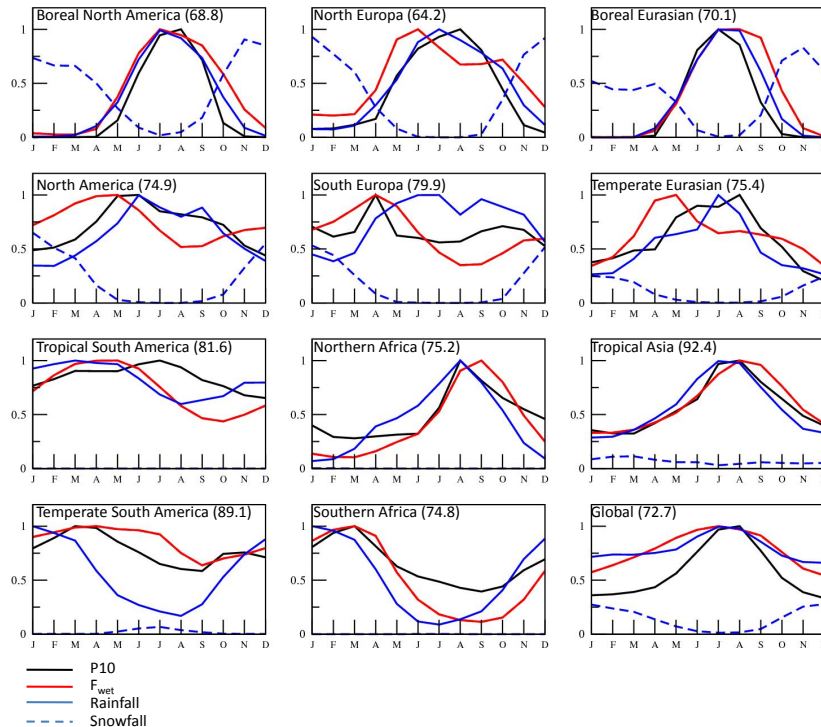


Fig. 7. Mean seasonal cycle for each region and at global scale for P_{10} and F_{wet} . Seasonality of snowfall and rainfall (both in relative way compared to snowfall + rainfall) are too added. All the curves are divided by their maximum value to obtain the same upper limit for all the curves. The FMT between P_{10} and F_{wet} (see Appendix for FMT definition) is given in each region's plot.

[Title Page](#)
[Abstract](#) [Introduction](#)
[Conclusions](#) [References](#)
[Tables](#) [Figures](#)
[◀](#) [▶](#)
[◀](#) [▶](#)
[Back](#) [Close](#)
[Full Screen / Esc](#)
[Printer-friendly Version](#)
[Interactive Discussion](#)

Modelling sub-grid wetland in the ORCHIDEE global land surface model

B. Ringeval et al.

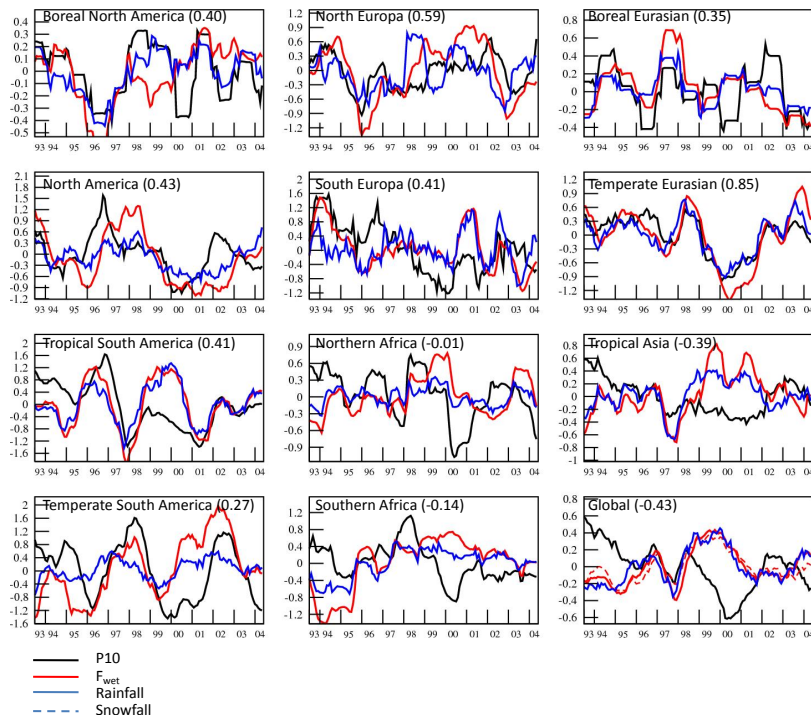


Fig. 8. Year-to-year variability of P_{10} , F_{\max} and of snowfall + rainfall. Each curve is obtained using moving average over 12 month on monthly anomalies. These anomalies were obtained by removing the mean seasonal cycle over 1993–2004 then dividing by the maximum value. Correlation between P_{10} and F_{wet} is given between brackets in each region's plot.

[Title Page](#)
[Abstract](#)
[Introduction](#)
[Conclusions](#)
[References](#)
[Tables](#)
[Figures](#)

[Back](#)
[Close](#)
[Full Screen / Esc](#)
[Printer-friendly Version](#)
[Interactive Discussion](#)

Modelling sub-grid wetland in the ORCHIDEE global land surface model

B. Ringeval et al.

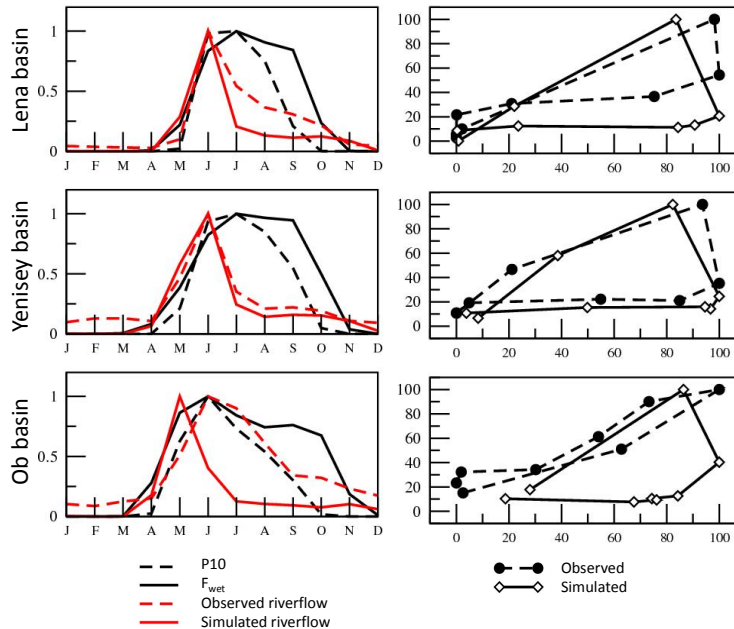


Fig. 9. (a) Mean seasonal cycle over 1993–2000 of riverflow (normalized by mean monthly maximum) and of the inundated/wetland extents over three boreal basins (Lena, Yenisey and Ob basins). (b) Hysteresis relationship between riverflow (in % of mean annual maximum) and inundation/wetland fractional extent (in % of mean annual maximum) for both observations and simulations.

[Title Page](#)
[Abstract](#) [Introduction](#)
[Conclusions](#) [References](#)
[Tables](#) [Figures](#)
[⏪](#) [⏩](#)
[◀](#) [▶](#)
[Back](#) [Close](#)
[Full Screen / Esc](#)
[Printer-friendly Version](#)
[Interactive Discussion](#)

[Title Page](#)[Abstract](#)[Introduction](#)[Conclusions](#)[References](#)[Tables](#)[Figures](#)[Back](#)[Close](#)[Full Screen / Esc](#)[Printer-friendly Version](#)[Interactive Discussion](#)

Soil water holding capacity (in Kg/m³) computed using:

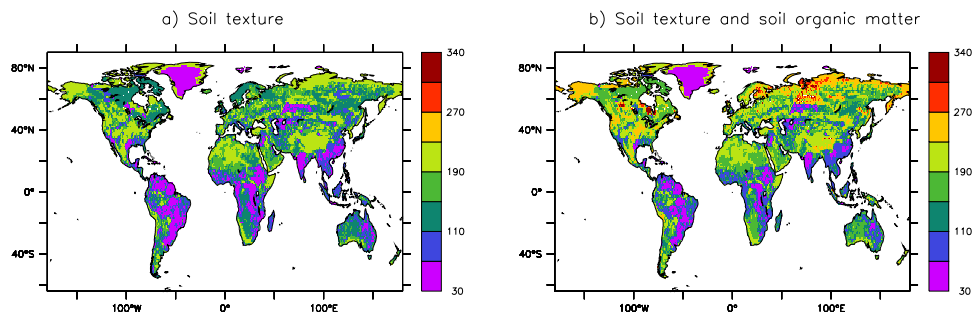


Fig. A1. Spatial variability in soil water holding capacity introduced in the initial version of ORCHIDEE (RU). Spatial soil water holding capacity computed using both soil texture and soil organic content (**b**) is used in all ORCHIDEE versions described in this paper (Fig. 1). Spatial soil water holding capacity computed using only soil texture is given in (**a**) for information.