

This discussion paper is/has been under review for the journal Geoscientific Model Development (GMD). Please refer to the corresponding final paper in GMD if available.

Simulating the mid-Pliocene climate with the MIROC general circulation model: experimental design and initial results

W.-L. Chan¹, A. Abe-Ouchi^{1,2}, and R. Ohgaito²

¹Atmosphere and Ocean Research Institute, University of Tokyo, Kashiwa, Japan

²Research Institute for Global Change, Japan Agency for Marine-Earth Science and Technology, Yokohama, Japan

Received: 28 July 2011 – Accepted: 11 August 2011 – Published: 19 August 2011

Correspondence to: W.-L. Chan (wlchan@aori.u-tokyo.ac.jp)

Published by Copernicus Publications on behalf of the European Geosciences Union.

GMDD

4, 2011–2046, 2011

Simulating mid-Pliocene with MIROC

W.-L. Chan et al.

[Title Page](#)

[Abstract](#)

[Introduction](#)

[Conclusions](#)

[References](#)

[Tables](#)

[Figures](#)

[⏪](#)

[⏩](#)

[◀](#)

[▶](#)

[Back](#)

[Close](#)

[Full Screen / Esc](#)

[Printer-friendly Version](#)

[Interactive Discussion](#)



Abstract

Recently, PlioMIP (Pliocene Model Intercomparison Project) was established to assess the ability of various climate models to simulate the mid-Pliocene warm period (MPWP), 3.29–2.97 million years ago. We use MIROC4m, a fully coupled atmosphere-ocean general circulation model (AOGCM), and its atmospheric component alone to simulate the MPWP, utilizing up-to-date data sets designated in PlioMIP as boundary conditions and adhering to the protocols outlined. In this paper, a brief description of the model is given, followed by an explanation of the experimental design and implementation of the boundary conditions, such as topography and sea surface temperature. Initial results show increases of approximately 10 °C in the zonal mean surface air temperature at high latitudes accompanied by a decrease in the equator-to-pole temperature gradient. Temperature in the tropical regions increase more in the AOGCM. However, warming of the AOGCM sea surface in parts of the northern North Atlantic Ocean and Nordic Seas is less than that suggested by proxy data. An investigation of the model-data discrepancies and further model intercomparison studies can lead to a better understanding of the mid-Pliocene climate and of its role in assessing future climate change.

1 Introduction

The mid-Pliocene corresponds to the most recent period in the earth's history during which global increases in temperatures reached similar magnitudes as those predicted for the late 21st century by many general circulation models (Jansen et al., 2007). As such, the mid-Pliocene has been of immense interest in recent years, not only to the paleoclimate community, but also to climate modellers assessing climate sensitivity. To gain more confidence in simulations of future climate change, it may be useful to test models on alternative scenarios, namely those of the past. This will also allow an assessment of the consistency of past climate changes with current theories. The

GMDD

4, 2011–2046, 2011

Simulating mid-Pliocene with MIROC

W.-L. Chan et al.

Title Page

Abstract

Introduction

Conclusions

References

Tables

Figures



Back

Close

Full Screen / Esc

Printer-friendly Version

Interactive Discussion



Simulating mid-Pliocene with MIROC

W.-L. Chan et al.

Title Page

Abstract

Introduction

Conclusions

References

Tables

Figures



Back

Close

Full Screen / Esc

Printer-friendly Version

Interactive Discussion



mid-Pliocene presents an ideal opportunity as it includes several potential palaeoclimate targets for reducing uncertainties in future projections (Schmidt, 2010). In this respect, it offers several advantages over other previous warm periods, in that conditions were similar to those of present-day in many ways. Atmospheric CO₂ concentration is estimated to be about 380 ppm with intervals of peak warmth possibly reaching 45 ppm higher (Raymo et al., 1996). The geographical configuration of the land masses and ocean basins, as well as the global ocean circulation, were close to those of present-day. Marine and continental fauna were essentially modern and fossil proxies are in abundance. Moreover, many mid-Pliocene species still exist today and thus, temperature proxies based on modern calibrations are feasible (Robinson et al., 2008a). As such, an increasing number of proxy data have become available. For example, Robinson et al. (2008b) have derived multiproxy temperature estimates from faunal assemblages, foraminifer Mg/Ca and alkenone unsaturation indices.

Simulations of the mid-Pliocene climate started in earnest with the GISS AGCM (Chandler et al., 1994) which used data from the United States Geological Survey's (USGS) Pliocene Research Interpretation and Synoptic Mapping (PRISM) Group as boundary conditions. Since then, simulations have been performed with other models, ranging from the UKMO AGCM/AOGCM (Haywood et al., 2000; Haywood and Valdes, 2004) to the IAP AGCM (Jiang et al., 2005), amongst others. With the possible exception of HADAM3, GCMAM3 and CAM3-CLM (e.g., Haywood et al., 2009), little headway has been made in methodical comparisons between model results. In addition, the use of AOGCMs for the mid-Pliocene simulations has so far been limited, in contrast to those of the Last Glacial Maximum and mid-Holocene, as documented by the Palaeoclimate Modelling Intercomparison Project (PMIP), now in its third phase (see <http://pmip3.lsce.ipsl.fr> for further details).

In 2008, the Pliocene Model Intercomparison Project (PlioMIP) was initiated as part of the more inclusive PMIP whose aim is to encourage a systematic study of state of the art climate models by evaluating their capability to reproduce past climate states, vastly different to that of today, and by carrying out model-model and model-data

Simulating mid-Pliocene with MIROC

W.-L. Chan et al.

[Title Page](#)

[Abstract](#)

[Introduction](#)

[Conclusions](#)

[References](#)

[Tables](#)

[Figures](#)



[Back](#)

[Close](#)

[Full Screen / Esc](#)

[Printer-friendly Version](#)

[Interactive Discussion](#)



comparisons. PlioMIP focuses on simulations of the mid-Pliocene warm period, defined as the interval between 3.29 and 2.97 Ma. The first stage of PlioMIP consists of two experiments which are run with an AGCM and a fully coupled AOGCM, and utilise up-to-date data sets from PRISM. The experimental designs for the AGCM and AOGCM are laid out concisely in Haywood et al. (2010, 2011), with differences only in the treatment of the oceans. As one participating model of the project, the Model for Interdisciplinary Research on Climate (MIROC) is used to simulate the mid-Pliocene climate, adhering to the guidelines set out in PlioMIP. In this paper, we give a description of the MIROC model and explain how the boundary conditions are applied. This is followed by a discussion on some initial results.

2 Model description

The coupled atmosphere-ocean general circulation model (AOGCM) used in our experiments is MIROC4m, where m stands for mid-resolution. This is an updated model of the previous mid-resolution version of MIROC3.2, the AOGCM developed at the institutes CCSR/NIES/FRCGC and used in the Intergovernmental Panel on Climate Change 4th Assessment Report, IPCC AR4 (Meehl et al., 2007), although the dynamics and physics remain unchanged. Further details on the model can be found in K-1 model developers (2004). We give a brief description of the main features of the model below. For the atmospheric general circulation model (AGCM), we use the atmospheric component of the MIROC4m AOGCM with prescribed sea surface temperatures (SSTs).

The AOGCM consists of five components, namely atmosphere, land, river, sea ice and ocean. Air-sea exchange is first realized between the atmosphere and sea ice components before interaction with the ocean component, although at ice-free grids air-sea flux is passed directly to the ocean component without modification. No flux adjustments are applied in the model.

2.1 Atmospheric model

The AGCM (CCSR/NIES/FRCGC AGCM5.7b) is based on that described in Numaguti (1997). Medium resolution is employed, with the horizontal resolution set to T42, corresponding roughly to a grid size of 2.8° . There are 20 vertical σ levels and the height of the model top is approximately 30 km. Surface height is generated from the USGS GTOPO30 dataset. Basically, a leap-frog scheme is employed for time discretization. Adiabatic advective processes are treated in a dynamics time step and other processes in a physics time step.

Prognostic variables are updated three times in each physics time step. The first update occurs after a cumulus convection parameterization scheme which is a modified form of that devised by Arakawa and Schubert (1974). The second occurs after a large scale condensation scheme based on that of Le Treut and Li (1991). The third occurs after the remaining physical processes. For subgrid vertical fluxes of prognostic variables, the level 2 scheme of the turbulence closure model by Mellor and Yamada (1982) is used.

A radiative transfer scheme (Nakajima et al., 2000) based on the two-stream discrete ordinate and k-distribution methods is employed. Optical parameters for water cloud, ice cloud, soil dust, black carbon, organic carbon, sulphate and sea salt are also included. Classification of aerosols is based on SPRINTARS (Spectral Radiation-Transport Model for Aerosol Species) – see Takemura et al. (2000). However, parameters are calculated off-line and are accessed by the AGCM through a table.

2.2 Land-surface and river routing models

The land-surface model employed is MATSIRO (Minimal Advanced Treatments of Surface Interaction and Runoff), details of which can be found in Takata et al. (2003). The horizontal resolution matches that of the atmospheric model. The vertical structure consists of a canopy layer, 5 soil layers and up to 3 snow layers. Energy and water exchange between the land surface and the atmosphere are represented as

GMDD

4, 2011–2046, 2011

Simulating mid-Pliocene with MIROC

W.-L. Chan et al.

Title Page

Abstract

Introduction

Conclusions

References

Tables

Figures

◀

▶

◀

▶

Back

Close

Full Screen / Esc

Printer-friendly Version

Interactive Discussion



is runoff flux to a river routing model. Prognostic variables include canopy temperature, canopy water content, snow amount, snow temperature, soil temperature and soil moisture content. Calculation of the snow albedo is based upon Wiscombe and Warren (1980). Most of the boundary conditions are generated from the ISLSCP Initiative I data set (National Aeronautics and Space Administration, 1996), while land-cover type is derived from USGS GLCC (Global Land Cover Characterization). Soil albedos are specified for visible and near infrared wavelength bands.

The river routing scheme used to model the transport of runoff water to the ocean is based on Miller et al. (1994). A globally constant river flow speed of 0.3 ms^{-1} is assumed for simplicity. The time step is set to 3 h.

2.3 Ocean model

The ocean general circulation model (OGCM) corresponds to version 3.4 of the CCSR Ocean Component Model (COCO). Refer to Hasumi (2000) for more details. Primitive equations are solved on a sphere where the Boussinesq and hydrostatic approximations are employed. The zonal resolution is fixed at 1.40625° , that is, 256 equally spaced grid points. In the meridional direction, there are 192 grid points whose resolution is approximately 0.56° between latitudes 8° N and 8° S , 1.4° north of 65° N and south of 65° S , and varies smoothly elsewhere. There are 43 vertical levels, the top 8 of which are in σ -coordinates. Prognostic variables are arranged horizontally on the Arakawa B staggered grid system. The barotropic mode equations are integrated in time steps of 30 s and others in steps of 20 min. A combination of the leap-frog and Euler-backward schemes are used for the integration of the prognostic equations, although only the latter is used for the barotropic mode equations.

The model bathymetry for present day is calculated from ETOPO5 (NOAA, 1998), a 5-min resolution bathymetry data set. A 2 grid gap represents the Bering Strait so that there is only one velocity grid point. Certain areas of water are represented as isolated basins, such as the Hudson Bay and the Mediterranean Sea. At the straits

Simulating mid-Pliocene with MIROC

W.-L. Chan et al.

[Title Page](#)

[Abstract](#)

[Introduction](#)

[Conclusions](#)

[References](#)

[Tables](#)

[Figures](#)



[Back](#)

[Close](#)

[Full Screen / Esc](#)

[Printer-friendly Version](#)

[Interactive Discussion](#)



which connect these basins to adjacent seas, tracers and sea surface elevation are artificially exchanged by a 2-way linear damping.

A brief description of the physical parameterization schemes follows. The model applies a simple vertical adjustment, whereby a statically unstable water column is homogenized instantaneously. Vertical mixing of momentum and tracers uses diffusion and viscosity coefficients as calculated by Noh and Kim (1999) whose parameterization scheme is based on level 2.5 turbulence closure of Mellor and Yamada (1982). The turbulent Prandtl number is modified to include dependency on the turbulent Richardson number. A background viscosity coefficient of $1.0 \times 10^{-4} \text{m}^2 \text{s}^{-1}$ is applied to all levels, whereas the background coefficient varies from $0.1 \times 10^{-4} \text{m}^2 \text{s}^{-1}$ at the ocean top to $3.0 \times 10^{-4} \text{m}^2 \text{s}^{-1}$ at the deepest level. For lateral mixing of momentum, Smagorinsky's biharmonic viscosity (Smagorinsky, 1963) is used with a coefficient value of $3.0 \times 10^4 \text{cm}^2 \text{s}^{-1}$, although, at latitudes north of 60°N and south of 60°S , this value reduces to zero linearly with increasing latitude. To parameterize tracer lateral mixing, harmonic horizontal diffusion, harmonic isopycnal diffusion and harmonic horizontal diffusion of isopycnal layer thickness are applied; coefficients are set to $1.0 \times 10^2 \text{m}^2 \text{s}^{-1}$, $1.0 \times 10^3 \text{m}^2 \text{s}^{-1}$ and $7.0 \times 10^2 \text{m}^2 \text{s}^{-1}$, respectively. The bottom boundary parameterization of Nakano and Sugimoto (2002) is used to represent downslope flow of dense water. The bottom layer, of thickness 100 m, is applied only at latitudes north of 49°N and south of 54°S .

2.4 Sea ice model

In the sea ice model, sea ice concentration, mean sea ice thickness and horizontal velocity components are predicted. The first two varies with thermodynamic growth, advection and mechanical deformation of ice floes. Zero-layer thermodynamics (Semtner, 1976) is assumed and only latent heat of sea ice melt is considered in the heat budget. Sea ice exists only when the temperature at the top level of the ocean model is at freezing point. If the temperature of the seawater underneath exceeds freezing point, sea ice amount is reduced until the temperature reduces to freezing point. The

Simulating mid-Pliocene with MIROC

W.-L. Chan et al.

Title Page

Abstract

Introduction

Conclusions

References

Tables

Figures



Back

Close

Full Screen / Esc

Printer-friendly Version

Interactive Discussion



salinity of sea ice is fixed at 5 psu and meltwater runs off into the ocean directly. The momentum equation for sea ice consists of an advection term, a Coriolis term, an acceleration term due to the slope of the sea surface, an internal stress term and an external forcing term derived from wind stress and ice-ocean drag. Lead formation is parameterized by imposing a maximum value for the sea ice concentration.

The sea ice model also assumes the role of the coupled model's air-sea interface, calculating heat, freshwater and momentum exchange. The albedo of bare ice surfaces is set to 0.5, while that of snow-covered surfaces is 0.85 for temperatures below 15 °C, 0.65 for 0 °C, and varies linearly in between.

3 Experimental design

The experimental design for the mid-Pliocene modelling follows that presented in Haywood et al. (2010, 2011). A set of boundary conditions, derived from data sets of the USGS PRISM group, is specified in PlioMIP. This set includes land/sea mask, topography, ice sheets, vegetation and SST specifically for models in which the user can change the land configuration to match that of the mid-Pliocene (referred to as “preferred” boundary conditions), although an alternative set is also given for other models. The former set is used with the MIROC model. The design for the AGCM experiment will be described first. All the PRISM3D boundary conditions (with the exception of prescribed SST and sea ice extent) used in the MIROC AGCM are also used in the AOGCM. A summary can be found in Table 1. For comparative purposes, we used results from control experiments, obtained previously with the same AGCM and AOGCM. In all experiments, insolation, greenhouse gases and orbital parameters are kept at pre-industrial 1850AD levels, as in Ohgaito and Abe-Ouchi (2007). However, atmospheric CO₂ concentration is increased to 405 ppm for the mid-Pliocene case.

Simulating mid-Pliocene with MIROC

W.-L. Chan et al.

Title Page

Abstract

Introduction

Conclusions

References

Tables

Figures



Back

Close

Full Screen / Esc

Printer-friendly Version

Interactive Discussion



3.1 Land/sea mask and land elevation

The PRISM3D fractional land/sea mask and its modern day equivalent are interpolated from their original $2^\circ \times 2^\circ$ grid to the $2.8^\circ \times 2.8^\circ$ grid employed in the MIROC AGCM. The difference between the mid-Pliocene and modern day values are then calculated and added to the MIROC land/sea mask. Regions where the resulting fractional land/sea mask is less than 0.7 are ignored and those where the largest, most prominent changes occur fall into three categories: coastal areas around Antarctica and in parts of northern Canada which were formerly land, and the Hudson Bay, which is now mostly in-filled. The other regions where the land/sea mask has changed consist primarily of isolated grid cells or small clusters of cells. For simplicity, we decide to alter the three previously mentioned regions only, as shown in Fig. 1. Notice the absence of the West Antarctic ice sheet. Although a flat bathymetry with average depth of 500 m was recommended for this deglaciated region, numerical instability set in soon after the start of the time integration. Instead, we set the depth of the newly created bathymetry to that of the shallowest ocean grid points in the model, i.e. approximately 42 m (8th level). Ocean gateways remain unchanged.

Mid-Pliocene land elevations are derived from the topographic reconstruction of Sohl et al. (2009) whereas modern land elevations are re-gridded from the ETOPO1 Global Relief Model data (Amante and Eakins, 2008). Using these two data sets, topography is implemented as an anomaly. In other words, we calculate the difference between the given mid-Pliocene topography and that of modern day. This difference, interpolated onto the relevant grid, is added to the modern day topography in the MIROC AGCM. Any ocean grid cells in the resulting topographic data set are subsequently masked out, following Fig. 1 and any grid cell representing land with negative elevation is changed to sea-level. The final topography is shown in Fig. 2.

GMDD

4, 2011–2046, 2011

Simulating mid-Pliocene with MIROC

W.-L. Chan et al.

Title Page

Abstract

Introduction

Conclusions

References

Tables

Figures



Back

Close

Full Screen / Esc

Printer-friendly Version

Interactive Discussion



3.2 Other boundary conditions for the land surface

PRISM3D reconstruction of the distribution of mid-Pliocene vegetation and ice sheets, derived from Salzmann et al. (2008) and Hill et al. (2007) is incorporated into the model. The original data, on a $2^\circ \times 2^\circ$ grid, consists of a 28-type biome. Each surface grid cell in the MIROC AGCM is allocated a biome type as specified by the closest grid cell in the data set before conversion to MIROC vegetation type. The conversion scheme is detailed in Table 2 and the geographical distribution of land vegetation, including ice sheet extent, is displayed in Fig. 3. There are no mid-Pliocene data available for the leaf area index (LAI). Thus, we allocate a minimum and maximum LAI to each cell grid depending on its vegetation type (Table 3) and determine a new LAI with a simple dependency on the month and latitude by fitting a sine curve. Soil albedos for both visible and near infrared wavelength bands are modified according to the new vegetation distribution (Table 3).

Some minor changes are required in the river routing. New river routes, across the in-filled Hudson Bay for example, are created such that they follow the steepest gradient in the mid-Pliocene topography. Soil texture is left largely unchanged. However, the in-filled Hudson Bay is replaced by medium soil texture, similar to that of some surrounding grid cells. Likewise, in regions of the Antarctic and Greenland where there are no ice sheets, soil texture is set to medium.

3.3 Conditions for the ocean

In the AGCM, SST data sets (Dowsett, 2007; Robinson et al., 2008b), provided by PRISM3D, are used to prescribe the SST for each month. As with topography, PRISM3D SST anomalies, calculated by subtracting modern SST values (Reynolds and Smith, 1995), are applied. That is, the difference between the Pliocene and modern day PRISM3D SST values are added to the MIROC values after interpolating onto the MIROC grid to create a new set of Pliocene SST, as shown in Fig. 4. Refer to Fig. 5 of Dowsett et al. (2009b) or Fig. 7 of Haywood et al. (2010) for maps of the PRISM3D

GMDD

4, 2011–2046, 2011

Simulating mid-Pliocene with MIROC

W.-L. Chan et al.

Title Page

Abstract

Introduction

Conclusions

References

Tables

Figures



Back

Close

Full Screen / Esc

Printer-friendly Version

Interactive Discussion



SST anomalies. In the control AGCM experiment, pre-industrial SSTs were previously prescribed. Applying an anomaly based on modern day SST may raise some issues of consistency, more so in locations where the differences between pre-industrial and modern day SST are comparable to the SST anomaly being applied. We intend to rerun the control AGCM experiment prescribed with modern day SST in addition to the corresponding Pliocene experiment in the near future to examine the extent to which the atmospheric responses using these two sets of SST values differ from one another.

Sea ice extent is incorporated within this SST dataset and is represented at grid points where SST is -1.8°C . Monthly sea ice mass per unit area is prescribed for the AGCM and for the mid-Pliocene experiment, we assign our own particular values as follows. Zonal mean values in the control run are calculated across grids where there is sea ice. These zonal mean values are then assigned to grid points where SST is -1.8°C in the mid-Pliocene run. Figure 5 shows the sea ice mass per unit area for the control and mid-Pliocene cases during February and August.

For the AOGCM, a 3-dimensional sea temperature data set (Dowsett, 2007; Robinson et al., 2008b; Dowsett et al., 2009a,b) for December is used to create the initial conditions for the mid-Pliocene ocean. This data set is specified in a horizontal grid of resolution $5^{\circ} \times 4^{\circ}$ and at the same 33 vertical levels as those in LEVITUS94 (Levitus and Boyer, 1994). We calculate the difference between this data set and the accompanying LEVITUS94 data set which serves as the modern day values, interpolate the difference (Dowsett et al., 2009b, Fig. 7) onto the MIROC ocean grid and add the result to the MIROC sea temperature values of the control run to obtain the initial conditions. The initial condition of the sea salinity, like that of the atmosphere, is derived, without modification, from the end of the control run.

3.4 Time integration

The AGCM and AOGCM are integrated for 50 yr and 1400 yr, respectively. For analysis, climatological means are calculated from the final 10 yr and 100 yr, respectively. The time series of the globally averaged surface air temperature is shown for both models in

Simulating mid-Pliocene with MIROC

W.-L. Chan et al.

Title Page

Abstract

Introduction

Conclusions

References

Tables

Figures



Back

Close

Full Screen / Esc

Printer-friendly Version

Interactive Discussion



Fig. 6. For the temperature to reach equilibrium, the AOGCM requires a spin up of approximately 1000 yr. Temperatures in the ocean component of the AOGCM (Fig. 7) still show small increasing tendencies, although these are limited to depths below 1000 m.

4 Results

4.1 Global and zonal mean values

Selected global mean values are shown in Table 4. Surface air temperature increases more in the AOGCM, 3.5 °C compared to 2.8 °C, although the resulting temperatures in both models are similar. The former compares favourably with values obtained from a number of other models: 3.6 °C in the NCAR GENESIS AGCM (Sloan et al., 1996) and 3.3 °C in the HadCM3 AOGCM (Lunt et al., 2010). Total precipitation also increases, despite a decrease in snowfall. The precipitation increase is twice as large in the AOGCM.

The globally averaged absorbed shortwave radiation at the top of the atmosphere (TOA) increases by about 5 Wm⁻² in both models. The largest contributions are found in areas where the albedo has reduced: firstly, over northern Africa, the Arabian peninsula and central Asia where the deserts have either reduced in area or disappeared completely; secondly, over Greenland and parts of the Antarctic during their respective summers. Larger increases in the western Antarctic and over the British Isles and the Norwegian Sea account for the larger global increase in the AGCM value. The outgoing longwave radiation at the TOA increases nearly twice as much in the AOGCM compared to the AGCM. Basically, the outgoing longwave radiation increases much more at low and mid-latitudes (where surface air temperature increases are greater in the AOGCM - see next section), especially over the Atlantic, Africa, southern Europe and South America. The local response can be completely opposite in the two models, for example over the Indian Ocean and Indonesia/northern Australia. The total outgoing radiation reduces by 2.87 Wm⁻² and 0.30 Wm⁻² in the AGCM and AOGCM, respectively.

Simulating mid-Pliocene with MIROC

W.-L. Chan et al.

Title Page

Abstract

Introduction

Conclusions

References

Tables

Figures



Back

Close

Full Screen / Esc

Printer-friendly Version

Interactive Discussion



Zonal mean values for the surface air temperature are displayed in Fig. 8. In both models, the temperature at high latitudes increases by approximately 10 °C. In general, the changes from the low- to high-latitudes are more extreme in the AGCM, leading to a greater reduction in the equator-to-pole temperature gradient. Temperature gains at low latitudes are smaller in the AGCM but there is a larger polar amplification due to the oceans. At low- to mid-latitudes, in contrast to the dip in the equatorial region of the AGCM, there is a rather uniform increase of 2 °C from 55° S to 20° N in the AOGCM. This is the result of a more uniform increase over the oceans and a significantly large increase over South America (see next section).

4.2 Surface air temperature

Figure 9 shows the surface air temperature for the AGCM and the difference between the mid-Pliocene and control experiments. Most, but not all, regions across the globe show an increase in temperature. As noted before, there is clearly a latitudinal dependence in this temperature increase, especially over the oceans. Little change is observed in the low- and mid-latitudes except over land masses such as South America, northern Africa and the Arabian peninsula. Conversely, large increases are seen at high-latitudes. In the most extreme cases, increases in excess of 25 °C are seen over eastern Greenland, the Nordic Seas and the Barents Sea during boreal winters and 25 °C over parts of the Antarctic during austral winters. During their respective summers, temperature increases in these regions can still reach 10 °C. Thus, although overall temperatures have increased at high latitudes, they are generally less variable throughout the year. There are noticeably some areas where the temperature has reduced. These are confined to land – western North America including the Rocky Mountains, eastern Peru, central Africa, parts of the Middle East, northeast India, central Asia and parts of the eastern Antarctic where the Pliocene elevation is higher than that of present day in the model. The calculated mid-Pliocene elevation is lower than that for modern day in the coastal areas west of the Andes but higher in the eastern part of the Central Andes (located in Bolivia). There is a similar east-west divide in

Simulating mid-Pliocene with MIROC

W.-L. Chan et al.

Title Page

Abstract

Introduction

Conclusions

References

Tables

Figures



Back

Close

Full Screen / Esc

Printer-friendly Version

Interactive Discussion



the elevation anomalies of western North America. These anomalies with opposite signs are reflected in increased temperatures (for example, in northern Chile where the increase is much higher than the zonally averaged value) and in decreased temperatures. Cooling in parts of Africa is also found by others (e.g. Chandler et al., 1994; Haywood et al., 2000) and is consistent with pollen data from Ethiopia (Bonnefille et al., 2004).

In the AOGCM, surface air temperature (Fig. 10) increases over most areas, as in the AGCM, and the largest increases are concentrated in Greenland and Antarctica. There are several differences between the two models concerning the scale of the increase and the spatial distribution. The ocean, in particular, does not exhibit much latitudinal dependence. The temperature increase over the oceans at low-latitudes are greater than those of the AGCM and do not differ significantly from those of the southern mid-latitudes. There is also a temperature decrease in the South Atlantic, to the west of Angola and Namibia. Temperature increases over the land masses are greater than those in the AGCM, with few exceptions, most noticeably over Greenland and western Antarctica during their respective winters. The increases are sufficiently large to counteract much of the effect of higher elevation. Nonetheless, temperatures are still reduced in parts of Antarctica (0° to 80° E).

4.3 Comparison with proxy SST reconstruction

The ocean plays an important role in the earth's climate and it is important to recognize how large the calculated and prescribed SSTs differ. In Fig. 11, the difference between the SST anomaly in the AOGCM and that prescribed in the AGCM is shown for February and August. At low-latitudes, the prescribed SST anomalies calculated from PRISM3D data varies between the range of -1 to 1°C in most regions. In fact, negative anomalies (i.e. lower SST in the mid-Pliocene) dominate in the equatorial region, in particular, the Indian Ocean. Since SST mostly increases in the AOGCM (not shown), the anomalies in Fig. 11 are mostly positive.

Simulating mid-Pliocene with MIROC

W.-L. Chan et al.

Title Page

Abstract

Introduction

Conclusions

References

Tables

Figures



Back

Close

Full Screen / Esc

Printer-friendly Version

Interactive Discussion



Simulating mid-Pliocene with MIROC

W.-L. Chan et al.

[Title Page](#)[Abstract](#)[Introduction](#)[Conclusions](#)[References](#)[Tables](#)[Figures](#)[Back](#)[Close](#)[Full Screen / Esc](#)[Printer-friendly Version](#)[Interactive Discussion](#)

Negative values appear off the coasts of Peru and Namibia in Fig. 11. In the former case, this can be explained by the large positive anomaly in the prescribed SST (Fig. 7 of Haywood et al., 2010) which does not appear in the AOGCM. In the latter case, this is caused by cooler water carried further north by the Benguela Current in the AOGCM.

5 There is a large discrepancy throughout the year in the northern North Atlantic Ocean and the Nordic Seas where the increase in AOGCM SST is not as large as that suggested by the proxy data. The discrepancy is also manifested in the local surface air temperatures (Figs. 9 and 10). This raises important issues as the region exhibits the largest SST anomalies in the PRISM3D data set and is influenced by North Atlantic
10 deep water. Large positive values appear in other parts of the northern high latitudes, for example, in the Labrador Sea, Baffin Bay, the eastern half of the Barents Sea and the neighbouring Kara Sea, especially during the summer months.

5 Summary and conclusions

The mid-Pliocene warm period (MPWP), 3.29–2.97 Ma, represented a time when
15 global mean temperatures were significantly higher (2–3 °C) than those of today, with the most pronounced heating at high latitudes. By this period, the continents had basically attained their present day form, although future expansion of ice sheet would be associated with an estimated 25 m drop in sea-level. Considering the scale of both warming and CO₂ increase, and the near-modern land-sea distribution, the MPWP
20 can be thought of as an analogue for future global warming. As such, there has been much interest in the MPWP and its relation to climatic conditions achieved in the future due to increased atmospheric CO₂ concentrations. PlioMIP was established to allow systematic comparisons of MPWP simulations achieved by different groups of the paleoclimate research community, following the same protocols and using similar
25 boundary conditions. In this paper, we explained the set-up of MPWP simulations using the MIROC4m GCM and gave a description of the model itself. Some basic results from these experiments were shown.

The experimental design for the AGCM and AOGCM follows closely the guidelines set out in PlioMIP (Haywood et al., 2010, 2011). The “preferred” set of boundary conditions are interpolated to fit the MIROC model grid and a description of the experimental method is given.

Initial results show that, globally, the magnitude of warming compares well with those seen in other models and that, in the present study, surface air temperature increases more in the AOGCM. Surface air temperature increases are seen across most areas, but are particularly large at high latitudes where the surface albedo is reduced, e.g. Antarctica, Greenland and the Arctic, producing a smaller equator-to-pole temperature gradient. The zonal mean temperature at high latitudes increases by about 10 °C. The temperature increases at low- to mid-latitudes are higher and more uniformly distributed in the AOGCM compared to the AGCM, with zonal mean increases of at least 2 °C. Increases in global surface air temperature are accompanied by a reduction in snowfall. However, total precipitation increases due to enhanced rainfall, especially in the AOGCM.

Results indicate a higher sensitivity to mid-Pliocene conditions in the AOGCM, as seen in the surface air temperature and precipitation, except in the northern North Atlantic and Nordic Seas where the AGCM is constrained by much warmer SST. At low latitudes, the SST changes in the AOGCM can be relatively large compared to the difference between SST prescribed for the control and mid-Pliocene AGCM experiments and is more typical of the changes seen in future global climate model projections. The inability to reproduce the SST anomalies as indicated by proxy data in both the northern North Atlantic and the tropical regions may raise certain questions not only about the applicability of the proxy data, but also about the validity of the analogy between mid-Pliocene and late 21st century climate states (Dowsett et al., 2009a). However, we also have to keep in mind the simplifications made in our experimental design and consider how these may have a bearing on our results.

More detailed analyses of results from these experiments will be covered in a forthcoming paper. PlioMIP is still in its early stages and we have, at present, confined

Simulating mid-Pliocene with MIROC

W.-L. Chan et al.

[Title Page](#)

[Abstract](#)

[Introduction](#)

[Conclusions](#)

[References](#)

[Tables](#)

[Figures](#)



[Back](#)

[Close](#)

[Full Screen / Esc](#)

[Printer-friendly Version](#)

[Interactive Discussion](#)



basic comparative studies to differences between the results of the MIROC4m AGCM and AOGCM models, and these with previous results from other groups which used slightly different boundary conditions before the PlioMIP guidelines were set up. No doubt, the inclusion of more model-derived data and the continual availability of up-to-date proxy data will give us a better understanding of the mid-Pliocene climate, of the mechanisms which can explain its features and of its role in assessing future climate change.

Acknowledgements. The authors thank R. O'ishi for his assistance in providing values for leaf area indices and general advice on land vegetation. All numerical experiments were carried out on the Earth Simulator at JAMSTEC, Yokohama.

References

- Amante, C. and Eakins, B. W.: ETOP1 1 Arc-Minute Global Relief Model: Procedures, Data Sources and Analysis, National Geophysical Data Center, NESDIS, NOAA, US Department of Commerce, Boulder, CO, August 2008. 2019
- Arakawa, A. and Schubert, W. H.: Interactions of cumulus cloud ensemble with the large-scale environment, Part I, *J. Atmos. Sci.*, 31, 671–701, 1974. 2015
- Bonnefille, R., Potts, R., Chalié, F., Jolly, D., and Peyron, O.: High-resolution vegetation and climate change associated with Pliocene *Australopithecus afarensis*, *P. Natl. Acad. Sci. USA*, 101, 12125–12129, 2004. 2024
- Chandler, M. A., Rind, D., and Thompson, R.: Joint investigations of the middle Pliocene II: GISS GCM Northern Hemisphere results, *Global Planet. Change*, 9, 197–219, 1994. 2013, 2024
- Dowsett, H. J.: The PRISM palaeoclimate reconstruction and Pliocene sea-surface temperature, in: *Deep Time Perspectives on Climate Change: Marrying the Signal from Computer Models and Biological Proxies*, edited by: Williams, M., Haywood, A. M., Gregory, F. J., and Schmidt, D. H., *Micropalaeontol. Soc., Spec. Pub. Geol. Soc.*, London, 459–480, 2007. 2020, 2021
- Dowsett, H. J., Chandler, M. A., and Robinson, M. M.: Surface temperatures of the Mid-

GMDD

4, 2011–2046, 2011

Simulating mid-Pliocene with MIROC

W.-L. Chan et al.

Title Page

Abstract

Introduction

Conclusions

References

Tables

Figures

◀

▶

◀

▶

Back

Close

Full Screen / Esc

Printer-friendly Version

Interactive Discussion



Simulating mid-Pliocene with MIROC

W.-L. Chan et al.

Title Page

Abstract

Introduction

Conclusions

References

Tables

Figures

◀

▶

◀

▶

Back

Close

Full Screen / Esc

Printer-friendly Version

Interactive Discussion



Pliocene North Atlantic Ocean: implications for future climate, *Philos. T. R. Soc. A*, 367, 109–126, 2009a. 2021, 2026

Dowsett, H. J., Robinson, M. M., and Foley, K. M.: Pliocene three-dimensional global ocean temperature reconstruction, *Clim. Past*, 5, 769–783, doi:10.5194/cp-5-769-2009, 2009b. 2020, 2021

Hasumi, H.: CCSR Ocean Component Model (COCO) Version 2.1, CCSR Report, The University of Tokyo, Japan, 13, 68 pp., 2000. 2016

Haywood, A. M. and Valdes, P. J.: Modelling Pliocene warmth: contribution of atmosphere, oceans and cryosphere, *Earth Planet. Sc. Lett.*, 218, 363–377, 2004. 2013

Haywood, A. M., Valdes, P. J., and Sellwood, B. W.: Global scale palaeoclimate reconstruction of the middle Pliocene climate using the UKMO GCM: initial results, *Global Planet. Change*, 25, 239–256, 2000. 2013, 2024

Haywood, A. M., Chandler, M. A., Valdes, P. J., and Salzmann, U.: Comparison of mid-Pliocene climate predictions produced by the HadAM3 and GCMAM3 General Circulation Models, *Global Planet. Change*, 66, 208–224, 2009. 2013

Haywood, A. M., Dowsett, H. J., Otto-Bliesner, B., Chandler, M. A., Dolan, A. M., Hill, D. J., Lunt, D. J., Robinson, M. M., Rosenbloom, N., Salzmann, U., and Sohl, L. E.: Pliocene Model Intercomparison Project (PlioMIP): experimental design and boundary conditions (Experiment 1), *Geosci. Model Dev.*, 3, 227–242, doi:10.5194/gmd-3-227-2010, 2010. 2014, 2018, 2020, 2025, 2026

Haywood, A. M., Dowsett, H. J., Robinson, M. M., Stoll, D. K., Dolan, A. M., Lunt, D. J., Otto-Bliesner, B., and Chandler, M. A.: Pliocene Model Intercomparison Project (PlioMIP): experimental design and boundary conditions (Experiment 2), *Geosci. Model Dev.*, 4, 571–577, doi:10.5194/gmd-4-571-2011, 2011. 2014, 2018, 2026

Hill, D. J., Haywood, A. M., Hindmarsh, R. C. A., and Valdes, P. J.: Characterising ice sheets during the mid Pliocene: evidence from data and models, in: *Deep Time Perspectives on Climate Change: Marrying the Signal from Computer Models and Biological Proxies*, edited by: Williams, M., Haywood, A. M., Gregory, F. J. and Schmidt, D. H., *Micropalaeontol. Soc., Spec. Pub. Geol. Soc., London*, 517–538, 2007. 2020

Jansen, E., Overpeck, J., Briffa, K.R., Duplessy J.-C., Joos, F., Masson-Delmotte, V., Olago, D., Otto-Bliesner, B., Peltier, W.R., Rahmstorf, S., Ramesh, R., Raynaud, D., Rind, D., Solomina, O., Villalba, R. and Zhang, D.: Palaeoclimate, in: *Climate Change 2007: The Physical Science Basis. Contribution of Working Group I to the Fourth Assessment Report of the*

Simulating mid-Pliocene with MIROC

W.-L. Chan et al.

[Title Page](#)

[Abstract](#)

[Introduction](#)

[Conclusions](#)

[References](#)

[Tables](#)

[Figures](#)



[Back](#)

[Close](#)

[Full Screen / Esc](#)

[Printer-friendly Version](#)

[Interactive Discussion](#)



Intergovernmental Panel on Climate Change, edited by: Solomon, S., Qin, D., Manning, M., Chen, Z., Marquis, M., Averyt, K. B., Tignor, M., and Miller, H. L., Cambridge University Press, Cambridge and New York, 2007. 2012

Jiang, D., Wang, H., Ding, Z., Lang, X. and Drange, H.: Modeling the middle Pliocene climate with a global atmospheric general circulation model, *J. Geophys. Res.*, 110, D14107, doi:10.1029/2004JD005639, 2005. 2013

K-1 model developers: K-1 coupled model (MIROC) description. K-1 technical report, edited by: Hasumi, H. and Emori, S., Center for Climate System Research, The University of Tokyo, Japan, 34 pp., 2004. 2014

Lunt, D. J., Haywood, A. M., Schmidt, G. A., Salzmann, U., Vales, P. J., and Dowsett, H. J.: Earth system sensitivity inferred from Pliocene modelling and data, *Nature Geosci.*, 3, 60–64, 2010. 2022

Le Treut, H. and Li, Z.-X.: Sensitivity of an atmospheric general circulation model to prescribed SST changes: feedback effects associated with the simulation of cloud optical properties, *Clim. Dynam.*, 5, 175–187, 1991. 2015

Levitus, S. and Boyer, T.: World Ocean Atlas Volume 4: Temperature, NOAA Atlas NESDIS 4, U.S. Government Printing Office, Washington, D.C., 117 pp., 1994. 2021

Meehl, G. A., Stocker, T. F., Collins, W. D., Friedlingstein, P., Gaye, A. T., Gregory, J. M., Kitoh, A., Knutti, R., Murphy, J. M., Noda, A., Raper, S. C. B., Watterson, I. G., Weaver, A. J., and Zhao, Z.-C.: Global Climate Projections, in: *Climate Change 2007: The Physical Science Basis. Contribution of Working Group I to the Fourth Assessment Report of the Intergovernmental Panel on Climate Change*, edited by: Solomon, S., Qin, D., Manning, M., Chen, Z., Marquis, M., Averyt, K. B., Tignor, M., and Miller, H. L., Cambridge University Press, Cambridge and New York, 2007. 2014

Mellor, G. L. and Yamada, T.: Development of a turbulence closure model for geostrophic fluid problems, *Rev. Geophys.*, 20, 851–875, 1982. 2015, 2017

Miller, J. R., Russell, G. L., and Caliri, G.: Continental-Scale River Flow in Climate Models, *J. Climate*, 7, 914–928, 1994. 2016

Nakajima, T., Tsukamoto, M., Tsushima, Y., Numaguti, A., and Kimura, T.: Modelling of the radiative process in an atmospheric general circulation model, *Appl. Opt.* 39, 4869–4878, 2000. 2015

Nakano, H. and Suginozono, N.: Effects of Bottom Boundary Layer Parameterization on Reproducing Deep and Bottom Waters in a World Ocean Model, *J. Phys. Oceanogr.*, 32, 1209–

Simulating mid-Pliocene with MIROC

W.-L. Chan et al.

Title Page

Abstract

Introduction

Conclusions

References

Tables

Figures



Back

Close

Full Screen / Esc

Printer-friendly Version

Interactive Discussion



1227, 2002. 2017

National Aeronautics and Space Administration, Goddard Space Flight Center (Sellers, P. J., Meeson, B. W., Closs, J., Collatz, J., Corprew, F., Dazlich, D., Hall, F. G., Kerr, Y., Koster, R., Los, S., Mitchell, K., McManus, J., Myers, D., Sun, K.-J., and Try, P.): International Satellite Land Surface Climatology Project – Initiative I data collection (ISLSCP I), NASA Distributed Active Archive Center (DAAC), available at: <http://badc.nerc.ac.uk/data/islscp>, 1996. 2016

NOAA, National Geophysical Data Center, Boulder, Colorado: Data Announcement 88-MGG-02, Digital relief of the Surface of the Earth, available from <http://www.ngdc.noaa.gov/mgg/global/etopo5.html>, 1998. 2016

Noh, Y. and Kim, H.-J.: Simulations of temperature and turbulence structure of the oceanic boundary layer with the improved near-surface process, *J. Geophys. Res.*, 104, 15621–15634, 1999. 2017

Numaguti, A., Takahashi, M., Nakajima, T., and Sumi, A.: Description of CCSR/NIES Atmospheric General Circulation Model, CGERs Supercomputer Monograph Report, Center for Global Environment Research, National Institute for Environmental Studies, 3, 1–48, 1997. 2015

Ohgaito, R. and Abe-Ouchi, A.: The role of ocean thermodynamics and dynamics in Asian summer monsoon changes during the mid-Holocene, *Clim. Dynam.*, 29, 39–50, 2007. 2018

Raymo, M. E., Grant, B., Horowitz, M., and Rau, G. H.: Mid-Pliocene warmth: stronger greenhouse and stronger conveyor, *Mar. Micropaleontol.*, 27, 313–326, 1996. 2013

Reynolds, R. W. and Smith, T. M.: A high resolution global sea surface temperature climatology, *J. Climate*, 8, 1571–1583, 1995. 2020

Robinson, M. M., Dowsett, H. J., and Chandler, M. A.: Pliocene Role in Assessing Future Climate Impacts, *Eos T. Am. Geophys. Un.*, 89, 501–512, 2008a. 2013

Robinson, M. M., Dowsett, H. J., Dwyer, G. S., and Lawrence, K. T.: Reevaluation of mid-Pliocene North Atlantic sea surface temperatures, *Paleoceanography*, 23, 1–9, 2008b. 2013, 2020, 2021

Salzmann, U., Haywood, A. M., Lunt, D. J., Valdes, P. J., and Hill, D. J.: A new Global Biome Reconstruction and Data-Model Comparison for the middle Pliocene, *Global Ecol. Biogeogr.*, 17, 432–447, 2008. 2020

Schmidt, G. A.: Enhancing the relevance of palaeoclimate model/data comparisons for assessments of future climate change, *J. Quaternary Sci.*, 25, 79–87, 2010. 2013

Semtner, A. J. Jr.: A model for the thermodynamic growth of sea ice in numerical investigations

Simulating mid-Pliocene with MIROC

W.-L. Chan et al.

[Title Page](#)[Abstract](#)[Introduction](#)[Conclusions](#)[References](#)[Tables](#)[Figures](#)[Back](#)[Close](#)[Full Screen / Esc](#)[Printer-friendly Version](#)[Interactive Discussion](#)

of climate, *J. Phys. Oceanogr.*, 6, 379–389, 1976. 2017

Sloan, L. C., Crowley, T. J., and Pollard, D.: Modeling of middle Pliocene climate with the NCAR GENESIS general circulation model, *Mar. Micropaleontol.*, 27, 51–61, 1996. 2022

Smagorinsky, J.: General circulation experiments with the primitive equations, *Mon. Weather Rev.*, 91, 99–164, 1963. 2017

Sohl, L. E., Chandler, M. A., Schmunk R. B., Mankoff, K., Jonas, J. A., Foley, K. M., and Dowsett, H. J.: PRISM3/GISS topographic reconstruction, U.S., Geological Survey Data Series, 419, 6 pp., 2009. 2019

Takata, K., Watanabe, T., and Emori, S.: Development of the minimal advanced treatments of surface interaction and runoff, *Global Planet. Change*, 38, 209–222, 2003. 2015

Takemura, T., Okamoto, H., Maruyama, Y., Numaguti, A., Higurashi, A., and Nakajima, T.: Global three-dimensional simulation of aerosol optical thickness distribution of various origins, *J. Geophys. Res.*, 105, 17853–17873, 2000. 2015

Wiscombe, W. J. and Warren, S. G.: A Model for the Spectral Albedo of Snow. I: Pure Snow, *J. Atmos. Sci.*, 37, 2712–2733, 1980. 2016

Simulating mid-Pliocene with MIROC

W.-L. Chan et al.

Title Page

Abstract

Introduction

Conclusions

References

Tables

Figures

⏪

⏩

◀

▶

Back

Close

Full Screen / Esc

Printer-friendly Version

Interactive Discussion



Table 1. Summary of the experimental design, parameters and boundary conditions imposed. The names of PRISM3D data files used are enclosed in brackets. Those applied as an anomaly to control experiment data sets are marked with an asterisk.

	Control run		Mid-Pliocene run	
	–	–	1	2
PlioMIP experiment no.	–	–	1	2
Model	AGCM	AOGCM	AGCM	AOGCM
Total integration length	235 yr	3800 yr	50 yr	1400 yr
Years used for analysis	Last 60 yr	Last 100 yr	Last 10 yr	Last 100 yr
Ocean temperature	MIROC pre-industrial climatological SST	Dynamic	PRISM3D (PRISM3_SST.v1.1*)	Dynamic For initial state: PRISM3D (Global_dot.v2.0*)
Land/sea mask	MIROC modern		PRISM3D (land_fraction.v1.1*)	
Topography	MIROC modern		PRISM3D (topo.v1.1*)	
Ice sheets and vegetation	MIROC modern		PRISM3D (biome_veg.v1.3)	
Atm. CO ₂ concentration	285 ppm		405 ppm	
Other greenhouse gases	CH ₄ : 863ppb, N ₂ O: 279ppb, CFC: none, O ₃ : 1850AD level			
Solar constant	1366 Wm ⁻²			
Orbital parameters	eccentricity=0.016724, obliquity=23.446°, angular precession=102.04°			

Table 2. Vegetation type in PRISM3D data set and in the MIROC model, and the scheme used to convert the former to the latter for the mid-Pliocene experiments.

PRISM3D		MIROC	
1	Tropical evergreen forest	2	Broadleaf evergreen forest
2	Tropical semi-deciduous forest		
3	Tropical deciduous forest/woodland	3	Broadleaf deciduous forest and woodland
4	Temperate deciduous forest	4	Mixed coniferous, broadleaf deciduous forest and woodland
5	Temperate conifer forest		
6	Warm-temperature mixed forest		
7	Cool mixed forest	5	Coniferous forest and woodland
8	Cool conifer forest		
9	Cold mixed forest		
10	Evergreen taiga/montane forest	6	High latitude deciduous forest and woodland
11	Deciduous taiga/montane forest		
12	Tropical savanna	7	Wooded C4 grassland
13	Tropical xerophytic shrubland		
14	Temperate xerophytic shrubland	8	Shrubs and bare ground
15	Temperate sclerophyll woodland	10	C3 grassland
16	Temperate broadleaved savanna		
17	Open conifer woodland		
18	Boreal parkland		
19	Tropical grassland		
20	Temperate grassland		
21	Desert	8	Shrubs and bare ground
22	Steppe tundra	9	Tundra
23	Shrub tundra		
24	Dwarf-shrub tundra		
25	Prostrate shrub tundra		
26	Cushion-forb, lichen, moss tundra		
28	Land-ice	1	Continental ice

**Simulating
mid-Pliocene with
MIROC**

W.-L. Chan et al.

Title Page

Abstract

Introduction

Conclusions

References

Tables

Figures

◀

▶

◀

▶

Back

Close

Full Screen / Esc

Printer-friendly Version

Interactive Discussion



Simulating mid-Pliocene with MIROC

W.-L. Chan et al.

[Title Page](#)

[Abstract](#)

[Introduction](#)

[Conclusions](#)

[References](#)

[Tables](#)

[Figures](#)

⏪

⏩

◀

▶

[Back](#)

[Close](#)

[Full Screen / Esc](#)

[Printer-friendly Version](#)

[Interactive Discussion](#)



Table 3. Maximum and minimum values of the leaf area index (LAI) and soil albedo values for visible and near infrared wavelength bands corresponding to each vegetation type in the mid-Pliocene experiments.

Vegetation type	Max. LAI	Min. LAI	Albedo (Visible)	Albedo (NIR)
1 Continental ice	0.000	0.000	0.100	0.150
2 Broadleaf evergreen forest	4.490	4.490	0.110	0.215
3 Broadleaf deciduous forest and woodland	3.900	0.429	0.108	0.210
4 Mixed coniferous, broadleaf deciduous forest and woodland	4.190	0.870	0.108	0.198
5 Coniferous forest and woodland	4.210	0.956	0.111	0.212
6 High latitude deciduous forest and woodland	4.930	0.244	0.110	0.222
7 Wooded C4 grassland	1.838	0.723	0.117	0.204
8 Shrubs and bare ground	0.287	0.192	0.248	0.279
9 Tundra	2.110	0.125	0.110	0.214
10 C3 grassland	2.190	0.799	0.101	0.155

Simulating mid-Pliocene with MIROC

W.-L. Chan et al.

[Title Page](#)

[Abstract](#)

[Introduction](#)

[Conclusions](#)

[References](#)

[Tables](#)

[Figures](#)

⏪

⏩

◀

▶

[Back](#)

[Close](#)

[Full Screen / Esc](#)

[Printer-friendly Version](#)

[Interactive Discussion](#)



Table 4. Global mean annual values of surface air temperature, sea surface temperature, sea surface salinity, total precipitation, rainfall, snowfall and radiation fluxes at the top of the atmosphere (TOA). The differences between the mid-Pliocene and control runs are given in columns 4 and 6.

Variable	Units	AGCM Pliocene	AGCM Plio-Cont	AOGCM Pliocene	AOGCM Plio-Cont
Surface air temperature	°C	16.68	2.75	16.63	3.47
Sea surface temperature	°C	*19.35	*1.29	19.32	2.08
Sea surface salinity	psu	–	–	34.28	–0.18
Rainfall	mm day ⁻¹	2.88	0.10	2.87	0.17
Snowfall	mm day ⁻¹	0.17	-0.04	0.14	-0.05
Total precipitation	mm day ⁻¹	3.05	0.06	3.01	0.12
Absorbed SW at TOA	Wm ⁻²	240.57	5.15	240.34	4.95
Outgoing SW at TOA	Wm ⁻²	100.74	-5.42	100.97	-5.22
Outgoing LW at TOA	Wm ⁻²	238.62	2.55	239.43	4.92

* Sea surface temperatures prescribed in the AGCM experiments are presented for reference.

Simulating mid-Pliocene with MIROC

W.-L. Chan et al.

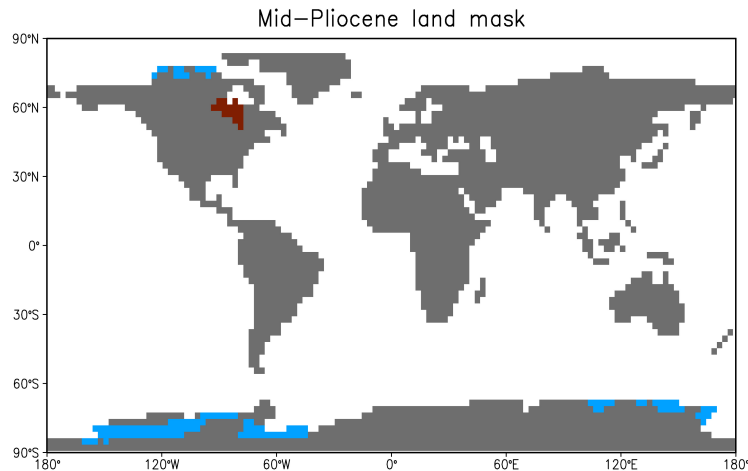
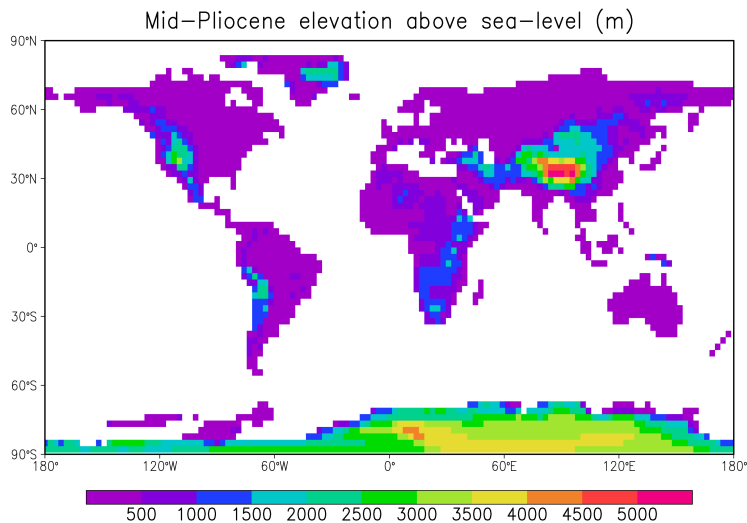


Fig. 1. Land sea mask used for the mid-Pliocene. The blue grid cells represent areas which are ocean in the mid-Pliocene but are land in present day. Conversely, the brown grid cells represent areas which are land in the mid-Pliocene but are ocean (namely, the Hudson Bay) in present day.

[Title Page](#)[Abstract](#)[Introduction](#)[Conclusions](#)[References](#)[Tables](#)[Figures](#)[⏪](#)[⏩](#)[◀](#)[▶](#)[Back](#)[Close](#)[Full Screen / Esc](#)[Printer-friendly Version](#)[Interactive Discussion](#)

**Simulating
mid-Pliocene with
MIROC**

W.-L. Chan et al.

**Fig. 2.** Surface height above sea-level in the mid-Pliocene experiment.[Title Page](#)[Abstract](#)[Introduction](#)[Conclusions](#)[References](#)[Tables](#)[Figures](#)[Back](#)[Close](#)[Full Screen / Esc](#)[Printer-friendly Version](#)[Interactive Discussion](#)

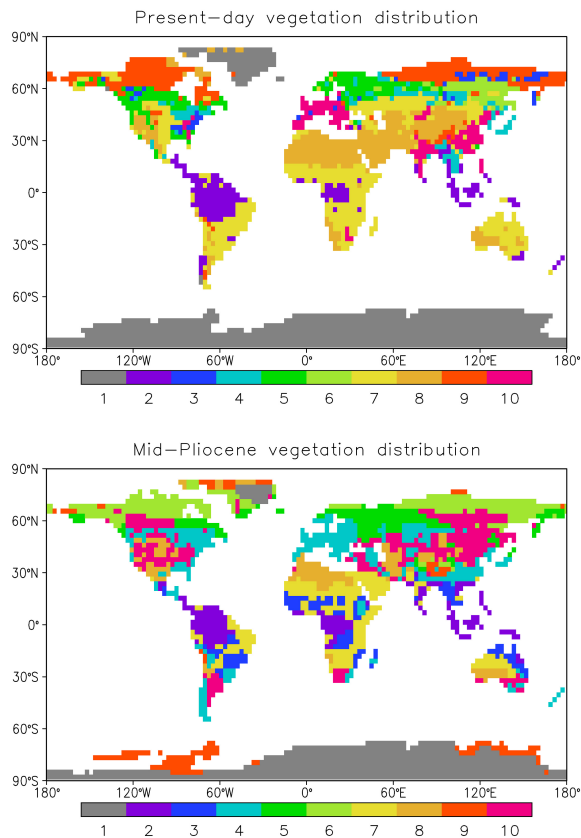


Fig. 3. Surface index denoting land vegetation in the present day (top figure) and in the mid-Pliocene (bottom figure) Key: (1) continental ice, (2) broadleaf evergreen forest, (3) broadleaf deciduous forest and woodland, (4) mixed coniferous, broadleaf deciduous forest and woodland, (5) coniferous forest and woodland, (6) high latitude deciduous forest and woodland, (7) wooded C4 grassland, (8) shrubs and bare ground, (9) tundra, (10) C3 grassland.

**Simulating
mid-Pliocene with
MIROC**

W.-L. Chan et al.

Title Page

Abstract

Introduction

Conclusions

References

Tables

Figures

◀

▶

◀

▶

Back

Close

Full Screen / Esc

Printer-friendly Version

Interactive Discussion



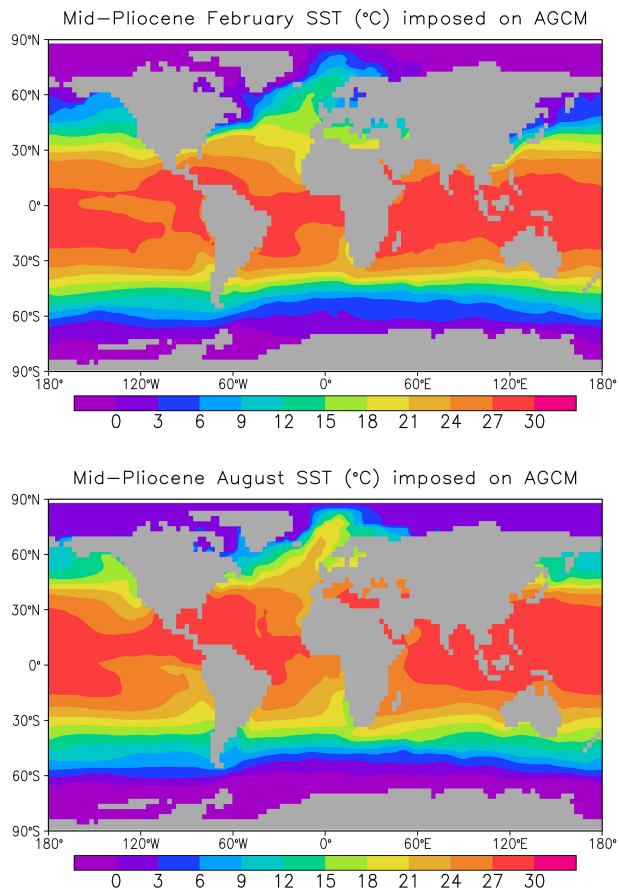


Fig. 4. Mid-Pliocene sea surface temperature imposed on the AGCM during February and August.

Simulating
mid-Pliocene with
MIROC

W.-L. Chan et al.

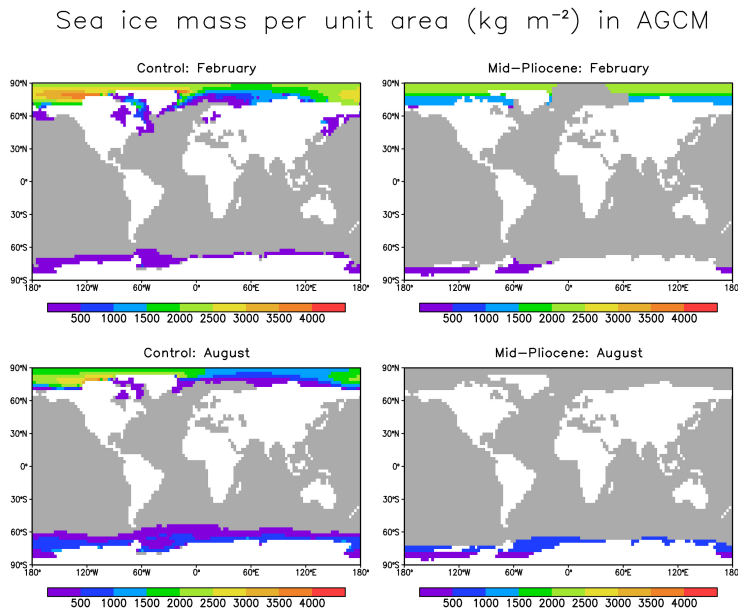


Fig. 5. Sea ice mass per unit area imposed on the AGCM during February and August for the control experiment (left side) and for the mid-Pliocene experiment (right side).

[Title Page](#)[Abstract](#)[Introduction](#)[Conclusions](#)[References](#)[Tables](#)[Figures](#)[Back](#)[Close](#)[Full Screen / Esc](#)[Printer-friendly Version](#)[Interactive Discussion](#)

**Simulating
mid-Pliocene with
MIROC**

W.-L. Chan et al.

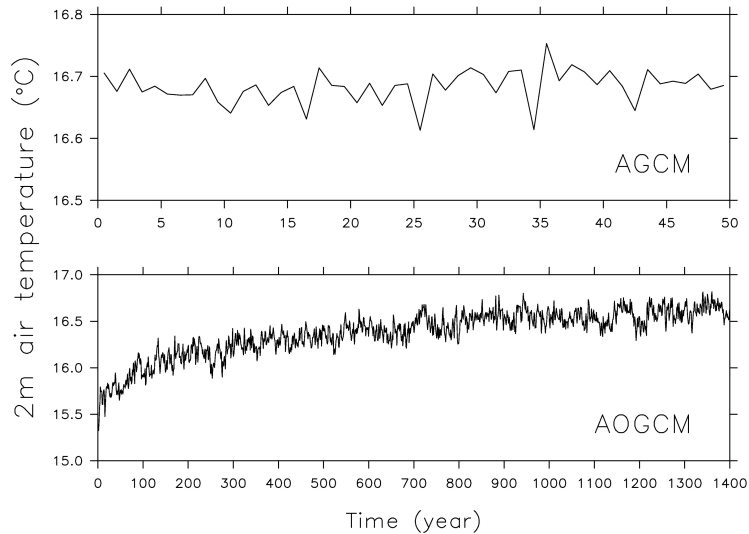


Fig. 6. Time series of the globally averaged value of 2 m air temperature for the AGCM and AOGCM.

[Title Page](#)[Abstract](#)[Introduction](#)[Conclusions](#)[References](#)[Tables](#)[Figures](#)[◀](#)[▶](#)[◀](#)[▶](#)[Back](#)[Close](#)[Full Screen / Esc](#)[Printer-friendly Version](#)[Interactive Discussion](#)

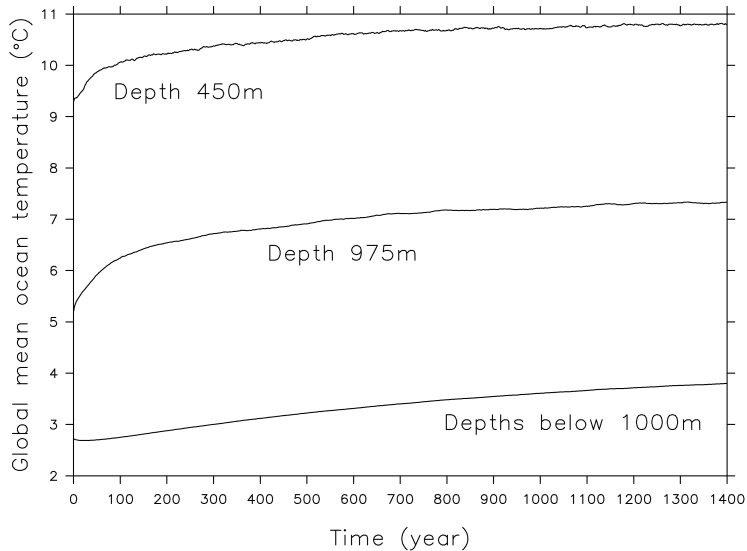


Fig. 7. Time series of the globally averaged value of the AOGCM ocean temperature at various depths.

Simulating mid-Pliocene with MIROC

W.-L. Chan et al.

Title Page

Abstract

Introduction

Conclusions

References

Tables

Figures

⏪

⏩

◀

▶

Back

Close

Full Screen / Esc

Printer-friendly Version

Interactive Discussion



Simulating mid-Pliocene with MIROC

W.-L. Chan et al.

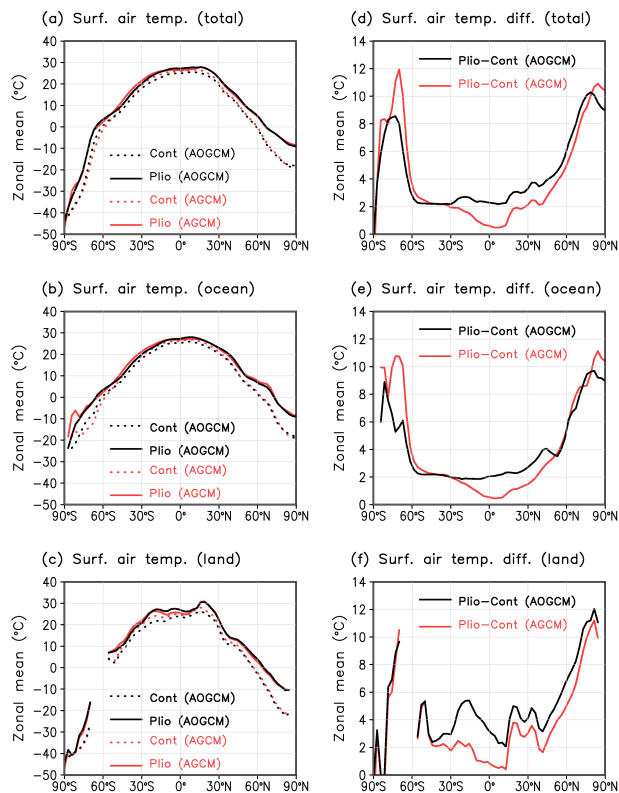


Fig. 8. Zonal mean surface air temperature (**a**, **b**, **c**) for the control (dotted lines) and mid-Pliocene (solid lines) experiments, and their differences (**d**, **e**, **f**). Values for the AGCM and AOGCM are denoted in red and black, respectively.

[Title Page](#)
[Abstract](#)
[Introduction](#)
[Conclusions](#)
[References](#)
[Tables](#)
[Figures](#)

[Back](#)
[Close](#)
[Full Screen / Esc](#)
[Printer-friendly Version](#)
[Interactive Discussion](#)


Simulating mid-Pliocene with MIROC

W.-L. Chan et al.

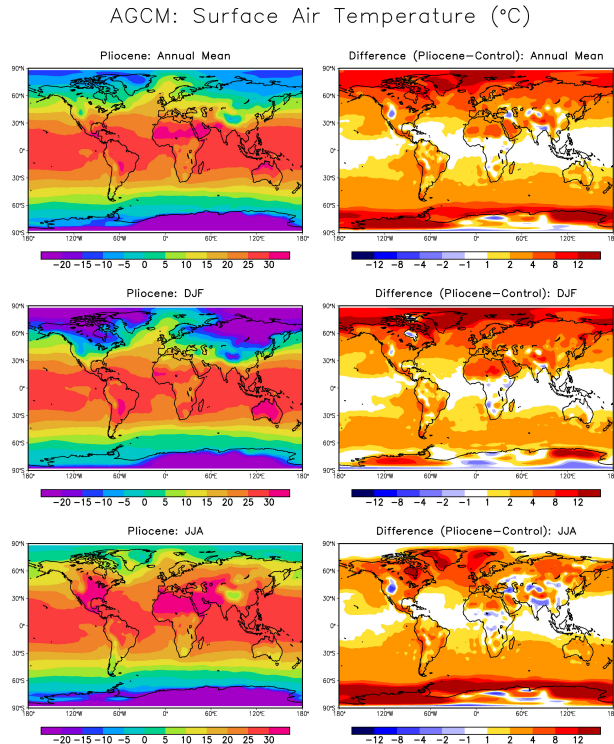


Fig. 9. AGCM mid-Pliocene surface air temperature averaged over the entire year, December-January-February and June-July-August (left side), and the differences between these values and those of the control experiment (right side).

Title Page

Abstract

Introduction

Conclusions

References

Tables

Figures

◀

▶

◀

▶

Back

Close

Full Screen / Esc

Printer-friendly Version

Interactive Discussion



Simulating mid-Pliocene with MIROC

W.-L. Chan et al.

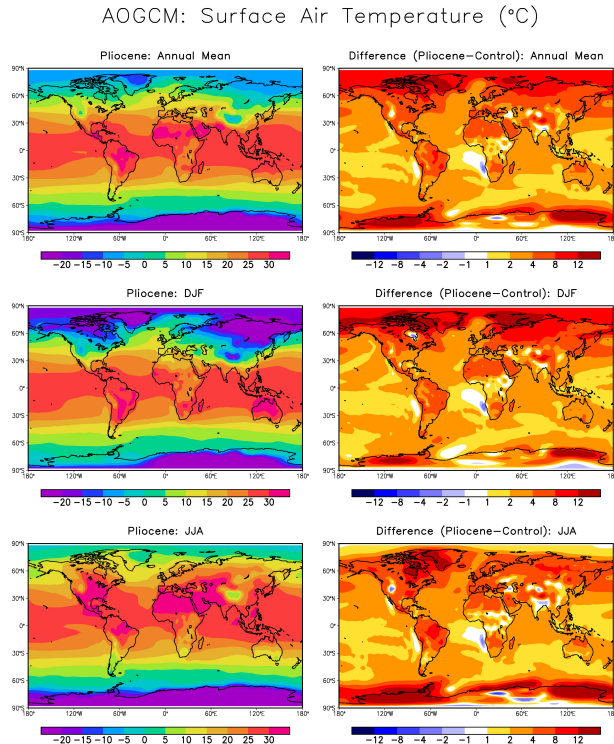


Fig. 10. AOGCM mid-Pliocene surface air temperature averaged over the entire year, December-January-February and June-July-August (left side), and the differences between these values and those of the control experiment (right side).

Title Page

Abstract

Introduction

Conclusions

References

Tables

Figures



Back

Close

Full Screen / Esc

Printer-friendly Version

Interactive Discussion



Simulating mid-Pliocene with MIROC

W.-L. Chan et al.

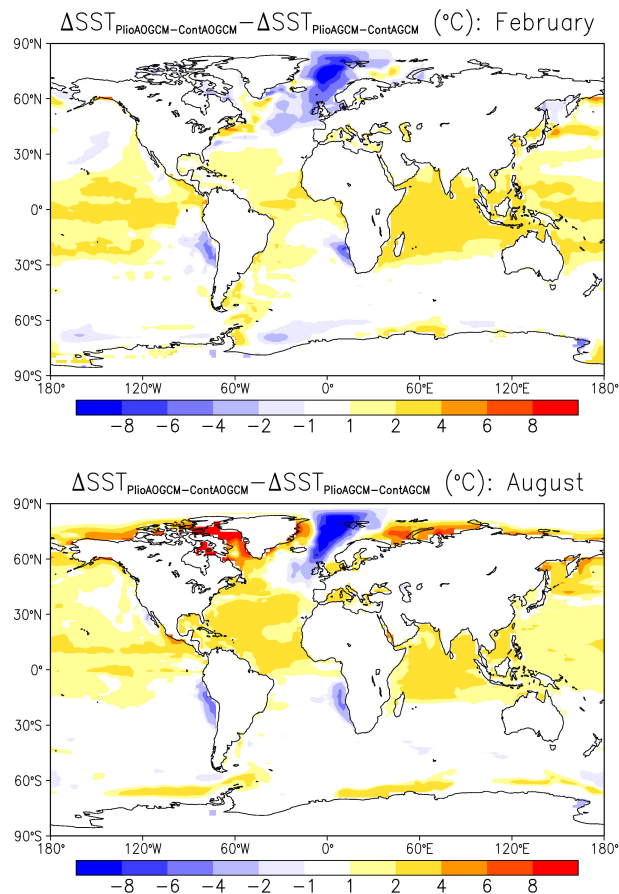


Fig. 11. Difference between the sea surface temperature anomaly in the AOGCM and that prescribed for the AGCM during February and August, i.e. $(SST_{\text{PlioAOGCM}} - SST_{\text{ContAOGCM}}) - (SST_{\text{PlioAGCM}} - SST_{\text{ContAGCM}})$.

[Title Page](#)
[Abstract](#)
[Introduction](#)
[Conclusions](#)
[References](#)
[Tables](#)
[Figures](#)
[Back](#)
[Close](#)
[Full Screen / Esc](#)
[Printer-friendly Version](#)
[Interactive Discussion](#)