



This discussion paper is/has been under review for the journal Geoscientific Model Development (GMD). Please refer to the corresponding final paper in GMD if available.

**Adaptive method of lines for CCN activation**

S. Arabas and  
H. Pawlowska

# Adaptive method of lines for multi-component aerosol condensational growth and cloud droplet activation

**S. Arabas and H. Pawlowska**

Institute of Geophysics, University of Warsaw, Pasteura 7, 02-093 Warsaw, Poland

Received: 29 July 2010 – Accepted: 9 August 2010 – Published: 19 August 2010

Correspondence to: S. Arabas (sarabas@igf.fuw.edu.pl)

Published by Copernicus Publications on behalf of the European Geosciences Union.

[Title Page](#)

[Abstract](#)

[Introduction](#)

[Conclusions](#)

[References](#)

[Tables](#)

[Figures](#)



[Back](#)

[Close](#)

[Full Screen / Esc](#)

[Printer-friendly Version](#)

[Interactive Discussion](#)



## Abstract

The process of formation of cloud droplets on an ensemble of aerosol particles is modelled by numerous investigators using the method of lines (MOL). The method involves discretization of the aerosol size spectrum into bins whose position and width evolve with time. One of the drawbacks of the method is its poor representation of the aerosol spectrum shape in the region between the unactivated aerosol mode and the activated cloud-droplet mode. An adaptive spectrum refinement procedure that improves the performance of the method is introduced and tested. A model of drop formation on multi-component aerosol is formulated for the purpose of the study. Model formulation includes explicit treatment of the drop temperature evolution. Several examples of the model set-up are used to demonstrate model capabilities. Model results are compared to those without adaptivity, and are compared to the Twomey's formulæ. A C++ implementation of the model is available as an electronic supplement of the paper.

## 1 Introduction

Cloud droplets form on cloud condensation nuclei, CCN (Aitken, 1875, and the works of his contemporaries). CCN are the atmospheric aerosol that contribute to the heterogeneous nucleation of the water vapour. As a result, the microphysical properties of clouds (i.e. the size spectrum of cloud droplets) strongly depend on physicochemical properties of aerosol particles (see e.g., the review of McFiggans et al., 2006). Owing to the fact that the radiative properties of clouds and their ability to precipitate are both dependant on characteristics of the size spectrum of cloud droplets (see e.g., the review of Stevens and Feingold, 2009), the description of the activation process is of importance to the studies on aerosol-cloud-climate interactions (e.g., Kulmala et al., 2009). This paper discusses a numerical method for studying the kinetics of aerosol growth by vapour condensation in the context of cloud-droplet activation. Presented method is of potential applicability in other branches of aerosol/hydrosol research.

**GMDD**

3, 1271–1315, 2010

### Adaptive method of lines for CCN activation

S. Arabas and  
H. Pawlowska

[Title Page](#)

[Abstract](#)

[Introduction](#)

[Conclusions](#)

[References](#)

[Tables](#)

[Figures](#)

[⏪](#)

[⏩](#)

[◀](#)

[▶](#)

[Back](#)

[Close](#)

[Full Screen / Esc](#)

[Printer-friendly Version](#)

[Interactive Discussion](#)

**Adaptive method of  
lines for CCN  
activation**S. Arabas and  
H. Pawlowska[Title Page](#)[Abstract](#)[Introduction](#)[Conclusions](#)[References](#)[Tables](#)[Figures](#)[Back](#)[Close](#)[Full Screen / Esc](#)[Printer-friendly Version](#)[Interactive Discussion](#)

Aerosol growth by condensation of water vapour is conceptualized as a twofold diffusion process. First, there is the diffusion of water molecules towards the particle, and the condensation of water vapour on the drop surface. Concurrently, the latent-heat release triggers the diffusion of heat from the droplet, hence the system is akin to the wet-bulb thermometer described by Maxwell (1878). The chemical composition of the growing particle and its curvature determine the vapour pressure over the droplet surface (Köhler, 1936, and his earlier works), the driving factor of the diffusion process. Additional complexities are introduced when considering an ensemble of particles of different sizes (Howell, 1949; Kraus and Smith, 1949), with different shapes and soluble material content (Kornfeld, 1970), nuclei of different solubility (Fitzgerald, 1974), and finally nuclei composed of different chemical species (Lee and Pruppacher, 1977) all competing simultaneously for the available water vapour. Yet another level of detail is reached when considering the feedback with the dynamics of the air (turbulence, entrainment and mixing), the interactions between the individual droplets (i.e. collision/coalescence) or more sophisticated description of cloud chemistry, all being however distant from the scope of this study. Numerical solutions of the problem had been repeatedly challenged using the fastest computers in the early years of electronic computing, starting with the studies of Mordy (1959) performed using the Swedish BESK computer, and the study of Neiburger and Chien (1960) carried out on the American SWAC.

The key complexity of the problem, from the mathematical standpoint, is the necessity to solve the partial differential equation describing the evolution of aerosol size spectrum. Analytical solutions to the problem (or semi-analytical estimates) can be derived only under significant approximations (see e.g., Squires, 1952; Twomey, 1959; Gelbard, 1990; Khvorostyanov and Curry, 2009, and references therein). Numerical solutions based on finite-difference approach using a fixed-grid representation of the size spectrum may be used (also called Eulerian or fixed-bin approaches). Such methods are characterised by computational difficulties (related to the numerical diffusion and the need for employing positive-defined algorithms), and the complexity of the

description of chemical properties of aerosol (see e.g., Chap. 5 in Williams and Loyalka, 1991).

The partial differential equation may be reduced to a system of ordinary differential equations (ODE) by spatial discretization of the initial size spectrum into sections with constant-in-time number of particles. The boundaries of these sections are then allowed to evolve with time, hence the name moving-sectional technique/Lagrangian approach/full-moving structure (Jacobson, 1999, Sect. 14.5 therein) or method of characteristics (Gelbard, 1990), or method of lines (Debry et al., 2007). This approach was introduced by Howell (1949), and has since been used in modelling CCN activation (e.g., Mordy, 1959; Neiburger and Chien, 1960; Fitzgerald, 1974; Hänel, 1987; Feingold and Heymsfield, 1992; Nenes et al., 2001b; Grabowski et al., 2010). Such formulation of the model eliminates the computational difficulties inherent to numerical treatment of partial differential equations, and allows accurate description of the evolution of aerosol composition because particle properties such as mass of solute are retained throughout the computation.

The moving-sectional technique does pose computational difficulties because of the ODE system stiffness (see e.g., the discussion by Gelbard, 1990). The physical process of competition for the water vapour between the droplets of different sizes and chemical composition can be correctly resolved in a numerical solution only under sufficiently short time-steps. The approximations inherent to the bin-representation of the aerosol size spectrum introduce significant uncertainties to the solution if low-resolution discretization is used (Korhonen et al., 2005). The issues of stiffness of the system and of appropriate time-step choice are addressed herein by using an adaptive Gear-type ODE solver. The issue of sensitivity of the results to the bin-number choice, being one of the factors causing discrepancies among results of different models (Kreidenweis et al., 2003) is the very focus of this study. The problem is tackled by introducing a simple adaptive size-spectrum discretization refinement. The resultant solution procedure is analogous to what is referred to as the adaptive method of lines (Wouwer et al., 2001).

---

**Adaptive method of lines for CCN activation**

S. Arabas and  
H. Pawlowska

---

[Title Page](#)

[Abstract](#)

[Introduction](#)

[Conclusions](#)

[References](#)

[Tables](#)

[Figures](#)



[Back](#)

[Close](#)

[Full Screen / Esc](#)

[Printer-friendly Version](#)

[Interactive Discussion](#)



## Adaptive method of lines for CCN activation

S. Arabas and  
H. Pawlowska

Title Page

Abstract

Introduction

Conclusions

References

Tables

Figures



Back

Close

Full Screen / Esc

Printer-friendly Version

Interactive Discussion



The following section of the paper covers model formulation and implementation. Sample results are discussed in the third section. First, a set of model runs without adaptivity is discussed revealing the sensibility of the results to parameters controlling the discretization of the initial aerosol size spectrum (Sects. 3.1 and 3.2). Second, the properties and efficacy of the adaptive size-spectrum discretization method are presented (Sect. 3.3). Third, a comparison of the results with the predictions of the classic Twomey's (1959) analytical formulæ is given (Sect. 3.4). The fourth section concludes the paper with a brief outlook on the possible applications of the discussed method within different domains of atmospheric research.

## 2 Model formulation and implementation

The model provides a description of the cloud-drop formation process at the initial stage of cloud-formation triggered by vertical air motion (i.e. in convective or orographic clouds). The model utilizes the method of lines (MOL) for numerically solving the so-called dynamic equation of aerosol growth by condensation. A list of symbols used in the text is given in Table 3.

### 2.1 Air-parcel system and its governing equations

The model describes an air parcel with the temperature  $T$ , pressure  $p$ , and specific humidity  $q_v$  being vertically displaced with constant velocity  $w$ . The parcel does not exchange heat or mass with the environment and hence its heat budget (neglecting terms related to mass and heat content of droplets) is expressed as:

$$c_p(q_v)dT = \frac{R(q_v)T}{p}dp - l_v(T)dq_v \quad (1)$$

where  $l_v$  is the latent heat of evaporation,  $c_p(q_v) = c_{pv}q_v + c_{pd}(1 - q_v)$  is the specific heat capacity at constant pressure of moist air, and  $R(q_v) = R_vq_v + R_d(1 - q_v)$  is the gas constant of moist air.  $R_v$  and  $R_d$  depict gas constants for water vapour and dry air,

respectively;  $c_{pv}$  and  $c_{pd}$  depict specific heat capacities at constant pressure for water vapour and dry air, respectively.

The parcel's pressure adapts instantaneously to the environmental value defined through the hydrostatic equilibrium. It follows that the pressure changes are driven by the vertical velocity of the parcel:

$$\frac{dp}{dt} = -\frac{pg}{R(q_v)T}w \quad (2)$$

where  $g$  is the gravitational acceleration.

Physical characteristics of the aerosol suspended in the parcel are described by a set of probability density functions (PDFs) defining the size spectra of dry aerosol, each PDF corresponding to different chemical composition. The dry spectra  $n_d^{[c]}(r_d)$  are invariant with time, are defined as a function of dry radius  $r_d$ , separately for each chemical component  $c$ . Each dry spectrum has a corresponding wet spectrum  $n_w^{[c]}(r_w, t)$  defined analogously but varying with time. Both  $n_d^{[c]}$  and  $n_w^{[c]}$  are expressed in terms of particle number per unit mass of moist air, and are referred to as specific concentrations. The model formulation is aimed at describing the growth of aerosol at high humidity, and corresponding high relative water contents within particles of the wet spectra. The total mass of particles is assumed to be proportional to the third moment of the wet PDFs:

$$\langle r_w^3 \rangle = \sum_c \frac{1}{N^{[c]}} \int_0^\infty n_w^{[c]}(r_w, t) r_w^3 dr_w \quad (3)$$

where  $N^{[c]} = \int_0^\infty n_w^{[c]} dr_w$  is the total specific concentration for a given chemical component. For each wet spectrum a corresponding droplet temperature field  $T_w^{[c]}(r_w, t)$  is also introduced.

Water is considered to be present in liquid and vapour phases only. The diffusion of both water vapour and heat around the droplets is treated assuming stationary state

**Adaptive method of lines for CCN activation**

S. Arabas and  
H. Pawlowska

Title Page

Abstract

Introduction

Conclusions

References

Tables

Figures

⏪

⏩

◀

▶

Back

Close

Full Screen / Esc

Printer-friendly Version

Interactive Discussion



Discussion Paper | Discussion Paper | Discussion Paper | Discussion Paper | Discussion Paper

with time-varying boundary conditions what results in the following form of the Fick's first law and Fourier's law (cf. e.g., Chap. 7 in Rogers and Yau, 1989):

$$\frac{dM}{dt} \frac{1}{4\pi r_w^2} = \frac{D}{r_w} (\rho_v - \rho_v|_{\text{drop surface}}) \quad (4)$$

$$\frac{dQ}{dt} \frac{1}{4\pi r_w^2} = \frac{K}{r_w} (T - T_w) \quad (5)$$

5 where  $M=4\pi r_w^3 \rho_l/3$  is the mass of a drop of density  $\rho_l$ ,  $\rho_v$  is the density of air in the parcel,  $D$  and  $K$  are diffusion coefficients discussed below. The two diffusion equations are coupled via a heat budget equation:

$$dQ = Mc_1 dT_w - l_v(T_w) dM \quad (6)$$

where  $c_1$  is the specific heat capacity of liquid water.

10 Equations (4) and (5) evaluated with constant (or temperature-dependant) diffusion coefficients  $D$  and  $K$  represent the so-called continuum régime in which the efficiency of diffusion is limited solely by the diffusivity of water vapour in air. Continuum régime is applicable for particles of sizes larger than the free path of water molecules in air (i.e.  $r_w \gg 0.1 \mu\text{m}$ ). Evolution of size of much smaller droplets is described using the  
 15 molecular régime, and the transition between the two régimes may be approximately allowed for by introducing a drop radius-dependency to the diffusion coefficient (Langmuir, 1944, discussion of Eq. 52 therein). Here, we apply the transition régime correction factors of Fuchs and Sutugin (1970) in the form suggested for cloud modelling by Laaksonen et al. (2005):

$$20 D = D_0 \frac{1 + \frac{\lambda_D}{r_w}}{1 + 1.71 \cdot \frac{\lambda_D}{r_w} + 1.33 \cdot \left(\frac{\lambda_D}{r_w}\right)^2} \quad (7)$$

**Adaptive method of lines for CCN activation**

S. Arabas and  
H. Pawlowska

Title Page

Abstract

Introduction

Conclusions

References

Tables

Figures

⏪

⏩

◀

▶

Back

Close

Full Screen / Esc

Printer-friendly Version

Interactive Discussion



$$K = K_0 \frac{1 + \frac{\lambda_K}{r_w}}{1 + 1.71 \cdot \frac{\lambda_K}{r_w} + 1.33 \cdot \left(\frac{\lambda_K}{r_w}\right)^2} \quad (8)$$

where  $D_0$  is the diffusivity of water vapour in air,  $K_0$  is the thermal conductivity of air,  $\lambda_D$  is the mean free path of water vapour in air, and  $\lambda_K$  is a length scale for heat transfer in air (the ratio of a mean free path to a characteristic length is called the Knudsen number). The two last are defined as:

$$\lambda_D = 2D_0(2R_v T_w)^{-1/2} \quad (9)$$

$$\lambda_K = \frac{4}{5} K_0 \frac{T}{\rho} (2R_d T)^{-1/2} \quad (10)$$

(Williams and Loyalka, 1991, Eqs. 6.6 and 6.33 therein).

The condensation/evaporation of water on/from the aerosol is the only source of changes in specific humidity  $q_v$  and thus:

$$\frac{dq_v}{dt} = -(1 - q_v) \frac{4\pi\rho_l}{3} \frac{d}{dt} \langle r_w^3 \rangle \sum_c N^{[c]} \quad (11)$$

where the  $(1 - q_v)$  term stems from the employment of specific quantities.

The density of water vapour at drop surface  $\rho_v|_{\text{drop surface}}$  in Eq. (4) is assumed to be equal to the equilibrium (saturation) value taking into account the Gibbs-Kelvin and Raoult effects related to surface curvature and drop composition, respectively (the so-called Köhler curve):

$$\rho_{vs} = \rho_{v\infty}(T_w) \cdot a \cdot \exp\left(\frac{2\sigma}{R_v T_w \rho_l r_w}\right) \quad (12)$$

where  $\rho_{v\infty}$  is the equilibrium vapour pressure over plane surface of pure water,  $\sigma$  is the surface tension coefficient, and the water activity  $a$  (Raoult term) is parameterized in

## GMDD

3, 1271–1315, 2010

### Adaptive method of lines for CCN activation

S. Arabas and  
H. Pawlowska

Title Page

Abstract

Introduction

Conclusions

References

Tables

Figures

⏪

⏩

◀

▶

Back

Close

Full Screen / Esc

Printer-friendly Version

Interactive Discussion





accordance with experimental data using the single-parameter representation of Petters and Kreidenweis (2007, Eq. 6 therein):

$$a(r_w, r_d) = \frac{r_w^3 - r_d^3}{r_w^3 - r_d^3(1 - \kappa^{[c]})} \quad (13)$$

where  $\kappa^{[c]}$  is the single parameter representing chemical composition in spectrum  $c$ .

The dry aerosol is assumed to be entirely soluble. A constant surface-tension coefficient  $\sigma=0.072 \text{ J/m}^2$  is used (value for pure water at 298 K) in accordance with the parameterization of Petters and Kreidenweis (2007).

The specific heat capacities of dry air  $c_{pd}$ , and water vapour  $c_{pv}$  are assumed constant (perfect gas), hence the latent heat of vapourisation is given by:

$$l_v(T') = l_{v0} + (c_{pv} - c_l) \cdot (T' - T_0) \quad (14)$$

and the equilibrium pressure over a plane surface of pure water (solution of the Clausius-Clapeyron equation) is given by:

$$p_{v\infty}(T') = p_0 \cdot \exp \left[ \frac{l_{v0} - (c_{pv} - c_l) \cdot T_0}{R_v \cdot \left( \frac{1}{T_0} - \frac{1}{T'} \right)^{-1}} \right] \left( \frac{T'}{T_0} \right)^{\frac{c_{pv} - c_l}{R_v}} \quad (15)$$

where  $T_0$ ,  $p_0$  and  $l_{v0}$  correspond to the triple-point values, and  $T'$  denotes here the temperature for which the formulæ are evaluated. The specific heat capacity of liquid water  $c_l$  is assumed constant.

## 2.2 MOL's ODE system

As outlined in the first section, the mathematical formulation of the model constitutes a system of ODEs which approximate the partial differential equation for describing the evolution of aerosol size spectrum. This approach is based on an approximation of the

## Adaptive method of lines for CCN activation

S. Arabas and  
H. Pawlowska

Title Page

Abstract

Introduction

Conclusions

References

Tables

Figures

⏪

⏩

◀

▶

Back

Close

Full Screen / Esc

Printer-friendly Version

Interactive Discussion



PDFs with piecewise constant functions. Here, each bin (numbered by  $b$ ) is defined by a constant-in-time number of particles  $N^{[c,b]}$  (per unit mass of air), and variable-in-time left and right boundaries  $r_{wl}^{[c,b]}(t)$  &  $r_{wr}^{[c,b]}(t)$ . The third moment of the particle size spectrum is thus approximated using:

$$5 \int_0^{\infty} n_w^{[c]} r_w^3 dr_w = \sum_b N^{[c,b]} \int_{r_{wl}^{[c,b]}}^{r_{wr}^{[c,b]}} \frac{r_w^3}{r_{wr}^{[c,b]} - r_{wl}^{[c,b]}} dr_w \quad (16)$$

This allows expressing the time derivative of the total mass of wet aerosol without employing partial differentials using:

$$\frac{d}{dt} \langle r_w^3 \rangle \sum_c N^{[c]} = \frac{1}{4} \sum_b \sum_c N^{[c,b]}. \quad (17)$$

$$\cdot \left[ \gamma \left( r_{wr}^{[c,b]}, r_{wl}^{[c,b]} \right) \frac{dr_{wr}^{[c,b]}}{dt} + \gamma \left( r_{wl}^{[c,b]}, r_{wr}^{[c,b]} \right) \frac{dr_{wl}^{[c,b]}}{dt} \right]$$

10 where

$$\gamma(r_0, r_1) = (3r_0^4 + r_1^4 - 4r_0^3 r_1) \cdot (r_0 - r_1)^{-2} \quad (18)$$

An assumption that  $r_{wl}^{[c,b]} < r_{wr}^{[c,b]}$  is inherent in this formulation (cf. the discussion and a related proof of *particle ordering principle* in Gelbard, 1990). The same discretization is applied to dry radii  $r_d$ , and particle temperatures  $T_w$  introducing  $r_{dl}^{[c,b]}$  and  $r_{dr}^{[c,b]}$ , and  $T_{wl}^{[c,b]}(t)$  and  $T_{wr}^{[c,b]}(t)$ , respectively. The MOL is thus applied to calculate the evolution of  $r_w(r_d, t)$  and  $T_w(r_d, t)$  by discretizing  $r_d$  and letting  $t$  to be the only independent variable.

15 If the size spectra are discretized into adjacent bins then  $T_{wr}^{[c,b]} = T_{wl}^{[c,b+1]}$ ,  $r_{dr}^{[c,b]} = r_{dl}^{[c,b+1]}$  and  $r_{wr}^{[c,b]} = r_{wl}^{[c,b+1]}$ . Consequently, the state vector of the model assuming discretization of the size-spectrum into  $N_b$  adjacent bins and  $N_c$  chemical components consists of:

20

**Adaptive method of lines for CCN activation**

S. Arabas and  
H. Pawlowska

Title Page

Abstract

Introduction

Conclusions

References

Tables

Figures



Back

Close

Full Screen / Esc

Printer-friendly Version

Interactive Discussion



- $N_c \times N_b$  constant concentrations  $N^{[c,b]}$
  - $N_c \times (N_b + 1)$  constant dry radii  $r_{dl}^{[c,b]}$
  - $N_c \times (N_b + 1)$  variable wet radii  $r_{wl}^{[c,b]}$
  - $N_c \times (N_b + 1)$  variable temperatures  $T_{wl}^{[c,b]}$
- 5 – variable  $\rho$ ,  $T$  and  $q_v$

While still constant from the standpoint of the ODE solver,  $N_b$ ,  $N^{[c,b]}$  and  $r_{dl}^{[c,b]}$  change during the spectrum refinement, and  $N_b$  becomes  $N_b^{[c]}$  (cf. Sect. 2.5).

## Adaptive method of lines for CCN activation

S. Arabas and  
H. Pawlowska

Title Page

Abstract

Introduction

Conclusions

References

Tables

Figures



Back

Close

Full Screen / Esc

Printer-friendly Version

Interactive Discussion



The system of ODEs defines the derivatives of all the variables with respect to time as:

$$\frac{d}{dt} \underbrace{\begin{bmatrix} r_{wl}^{[c,b]} \\ T_{wl}^{[c,b]} \\ q_v \\ p \\ T \end{bmatrix}}_x = \underbrace{\begin{bmatrix} \frac{D(\lambda_D, r_w)}{\rho_l r_{wl}^{[c,b]}} \left[ \frac{p q_v}{R(q_v) T} - \frac{\rho_{vs} (T_{wl}^{[c,b]}, r_{wl}^{[c,b]}, r_{dl}^{[c,b]})}{R_v T_{wl}^{[c,b]}} \right] \\ \frac{3}{c_1} \left[ \frac{dr_{wl}^{[c,b]}}{dt} \frac{l_v(T_{wl}^{[c,b]})}{r_{wl}^{[c,b]}} + \frac{T - T_{wl}^{[c,b]}}{r_{wl}^{[c,b]2}} \frac{K(\lambda_K, r_w)}{\rho_l} \right] \\ (q_v - 1) \frac{\pi \rho_l}{3} \sum_c \sum_b N^{[c,b]} \\ \cdot \left[ \gamma \left[ r_{wr}^{[c,b]}, r_{wl}^{[c,b]} \right] \frac{dr_{wr}^{[c,b]}}{dt} + \gamma \left[ r_{wl}^{[c,b]}, r_{wr}^{[c,b]} \right] \frac{dr_{wl}^{[c,b]}}{dt} \right] \\ - \frac{p g}{T R(q_v)} W \\ \frac{1}{c_p(q_v)} \left[ \frac{T R(q_v)}{p} \frac{dp}{dt} - l_v(T) \frac{dq_v}{dt} \right] \end{bmatrix}}_{F(x,t)} \quad (19)$$

The drop-growth is described here using separate equations for drop-temperature and drop-radius evolution (see e.g., Vesala et al., 1997), as opposed to a single explicit equation (the so-called Mason equation, Howell, 1949; Tsuji, 1950; Mason, 1957).

### 2.3 Initial conditions

The initial dry-aerosol size spectra and their chemical composition, initial temperature, pressure, humidity and the vertical velocity profile are the key parameters for each model run.

PDFs of tropospheric aerosol are generally well represented using a trimodal log-normal distribution (Whitby, 1978). The initial spectra of dry aerosol are thus defined for each model run using (Williams and Loyalka, 1991, Eq. 1.22 therein):

$$n_d^{[c]}(r_d) = \frac{1}{\rho} \sum_m \frac{N_m^{[c]}}{\sqrt{2\pi} \ln(\sigma_m^{[c]})} \frac{1}{r_d} \exp \left[ - \left( \frac{\ln \left( \frac{r_d}{r_m^{[c]}} \right)}{\sqrt{2} \ln(\sigma_m^{[c]})} \right)^2 \right] \quad (20)$$

5 where  $N_m^{[c]}$  is the total concentration in a mode,  $\sigma_m^{[c]}$  is the geometric standard deviation of a mode, and  $r_m^{[c]}$  is the mode radius (all defined separately for each chemical component).  $N_m$  is generally reported as concentration (defined in terms of a unit volume, as opposed to unit mass as it is in case of specific concentration  $n_d$ ) hence the division by the air density  $\rho$  in Eq. (20). The bins are initially equally spaced in logarithm of radius  
 10 over the 1 nm–100  $\mu$ m range what ensures accurate representation of the log-normal shape of the initial spectra.

The initial spectra of wet aerosol are calculated by assuming an equilibrium state defined by:

$$\begin{aligned} T_{wl}^{[c]} \Big|_{t=0} &= T_{wr}^{[c]} \Big|_{t=0} = T \\ \frac{dr_{wl}^{[c]}}{dt} \Big|_{t=0} &= \frac{dr_{wr}^{[c]}}{dt} \Big|_{t=0} = 0 \end{aligned} \quad (21)$$

15 The initial values of  $T$ ,  $\rho$  and  $q_v$  are chosen to describe the air properties slightly beneath the cloud base, i.e. at high relative humidity (RH) but below saturation. High initial relative humidity assures consistency with the dilute-solution approximation inherent in the Raoult's law.

**Adaptive method of lines for CCN activation**

S. Arabas and  
H. Pawlowska

Title Page

Abstract

Introduction

Conclusions

References

Tables

Figures

⏪

⏩

◀

▶

Back

Close

Full Screen / Esc

Printer-friendly Version

Interactive Discussion

## 2.4 Numerical solution

Integration of Eq. (19) without further approximations requires a numerical algorithm capable of solving a stiff ODE system (the stiffness of the system is confirmed e.g. by the significant inefficiency of the Adams-Moulton method with functional iteration).

5 In addition, calculation of the initial wet spectra using an equilibrium condition defined by Eqs (21) is not possible analytically. The latter problem is solved by employing an iterative root-bracketing procedure (using the Brent-Dekker method, cf. Sect. 2.6). The initial search interval for root-bracketing is defined using the dry radius for the lower bound, and the equilibrium value with the Gibbs-Kelvin effect neglected for the upper  
10 bound.

The ODE system is solved using the variable-order, variable-step backward differentiation formula (BDF) as implemented in the CVODE solver (Cohen and Hindmarsh, 1996, cf. Sect. 2.6 herein). In each time-step (numbered by  $i$ ) the ODE system  $dx/dt = F(x, t)$  defined by Eq. (19) is integrated by finding a root of  $f(x_i)$ :

$$15 \quad f(x_i) = \sum_{k=1}^h \alpha_{i,k} x_{i-k} + (t_i - t_{i-1}) \beta_i F(x_i, t_i) - x_i \quad (22)$$

using the Newton-Raphson iteration (here  $h$  varies between 1 and 5, and defines the order of the method at the current time-step, and  $\alpha_{i,k}$  &  $\beta_i$  are variable coefficients). The iteration (with steps numbered by  $j$ ) is of the following form:

$$x_i^{j+1} = x_i^j - \frac{f(x_i^j)}{f'(x_i^j)} = x_i^j + \frac{f(x_i^j)}{1 - (t_i - t_{i-1}) \beta_i \frac{\partial F}{\partial x}} \quad (23)$$

20 The Jacobian matrix  $\partial F / \partial x$  is updated at least once every twentieth time-step. The Jacobian is approximated by multiple evaluations of the right-hand side of Eq. (19) using the current, and slightly perturbed values of  $x$ .

The CVODE solver adaptively chooses time-step according to the desired accuracy to be achieved in each step of integration (relative tolerance of  $1 \times 10^{-8}$  and zero

## Adaptive method of lines for CCN activation

S. Arabas and  
H. Pawlowska

Title Page

Abstract

Introduction

Conclusions

References

Tables

Figures

⏪

⏩

◀

▶

Back

Close

Full Screen / Esc

Printer-friendly Version

Interactive Discussion



absolute tolerance was used in the calculations presented here). In addition, the solver is instructed to shorten the time-step if an unphysical condition is detected during evaluation of the system right-hand side  $F(x, t)$  (e.g. if a positively-defined quantity has a negative value or if the left edge of a bin outruns its right edge).

The right-hand side of the ODE system is evaluated in the order presented in Eq. (19). The integration is performed until a desired time (altitude) is passed, and an interpolated set of values for this time (altitude) is calculated and returned.

After each successful integration step, a spectrum-refinement procedure is carried out, if necessary, and in that case the integration over the last time-step is repeated. The conditions for triggering the spectrum-refinement are defined and discussed in the following subsection. Each refinement causes a change of the length of  $x$ , which in turn results in reducing the current order  $h$  to unity, and re-evaluation of the Jacobian matrix.

A solution of the problem in context of cloud-microphysical studies is a set of properties of the cloud-droplet spectrum such as cloud-droplet number concentration (CDNC), liquid water content (LWC), average droplet radius ( $\langle r \rangle$ ), the standard deviation of the size spectrum ( $\sigma_r$ ) and effective radius ( $r_{\text{eff}}$ ). The  $k$ -th moment of the droplet spectrum is evaluated, taking into account that the left-most (and right-most) bins may fall only partially in the assumed cloud-droplet region, using:

$$\langle r_w^k \rangle = Z_k / Z_0 \quad (24)$$

where

$$Z_k = \sum_c \sum_b \frac{N^{[c,b]}}{r_{\text{wr}}^{[c,b]} - r_{\text{wl}}^{[c,b]}} \frac{r_b - r_a}{r_{\text{wr}}^{[c,b]} - r_{\text{wl}}^{[c,b]}} \frac{r_b^{k+1} - r_a^{k+1}}{k+1} \quad (25)$$

where  $r_a = \max(r_{\text{min}}, r_{\text{wl}}^{[c,b]})$ ,  $r_b = \min(r_{\text{max}}, r_{\text{wr}}^{[c,b]})$ ;  $r_{\text{min}}$  was set at  $1 \mu\text{m}$  and  $r_{\text{max}}$  at  $25 \mu\text{m}$ . Consequently:

$$- \text{CDNC} = \rho Z_0$$

**Adaptive method of lines for CCN activation**

S. Arabas and  
H. Pawlowska

Title Page

Abstract

Introduction

Conclusions

References

Tables

Figures



Back

Close

Full Screen / Esc

Printer-friendly Version

Interactive Discussion



$$- LWC=4\rho\pi\rho_1Z_3/3$$

$$- \sigma_r=\sqrt{Z_2/Z_0-(Z_1/Z_0)^2}$$

$$- r_{\text{eff}}=Z_3/Z_2$$

## 2.5 The adaptive size-spectrum discretization scheme

5 The key task of the adaptive discretization scheme is to control the accuracy of the discretization by splitting any overly wide bins into several smaller bins while the ODE system is integrated. Using the MOL nomenclature (Wouwer et al., 2001, Sect. 1.3 therein) it is thus an *h-refinement* of the spatial grid. Insertion of new bins takes place at discrete time levels only, namely when the ODE solver reaches its next internal

10 time-step. Consequently, the grid adaptation procedure is decoupled from the ODE integration and as such the *static gridding* is employed. The method utilizes the so-called *full restart* as the ODE solver is reinitialised after each refinement event, and restarts with the lowest order. The restart and the reduction of the method order is a consequence of changing the length of the model state vector  $x$ .

15 The criterion for triggering the division of a given bin is defined as follows. Bin splitting happens whenever the ratio of the logarithm of the width of a given bin to its initial value reaches a certain limit. The limit was set at 2 for most of the simulations discussed in the text (save for the case of urban aerosol where 1.8 was used, cf. Sect. 3.3), meaning that no bin was allowed to double its width when viewed in logarithmic scale (the

20 previous step of the solver is repeated each time new bins are added). Smaller limits cause the algorithm to carry out the refinement earlier in time and hence increase the computational effort. Larger limits delay the refinement and at the same time increase the uncertainty inherent to the interpolation performed to calculate the drop temperatures and dry/wet radii at the edges of the newly created bins. No refinement takes

25 place when the drop concentration in a given bin is below a certain level hereinafter referred to as the *tolerance*.

## Adaptive method of lines for CCN activation

S. Arabas and  
H. Pawlowska

[Title Page](#)

[Abstract](#)

[Introduction](#)

[Conclusions](#)

[References](#)

[Tables](#)

[Figures](#)

[⏪](#)

[⏩](#)

[◀](#)

[▶](#)

[Back](#)

[Close](#)

[Full Screen / Esc](#)

[Printer-friendly Version](#)

[Interactive Discussion](#)





## Adaptive method of lines for CCN activation

S. Arabas and  
H. Pawlowska

Title Page

Abstract

Introduction

Conclusions

References

Tables

Figures



Back

Close

Full Screen / Esc

Printer-friendly Version

Interactive Discussion



Any refinement event causes a full-restart of the ODE solver which, in turn, causes the solver to reduce the order, tighten its time-step, re-evaluate the Jacobian matrix, and consequently slow down the computations. For this reason, the number of bins into which a bin is split is chosen in a way ensuring no further splitting of any of the newly created bins will occur. The number of new bins added is thus chosen by dividing  $N^{[c,b]}$  by the tolerance. The new bins are spaced linearly in radius, and hence the specific concentration in each of the new bins is equal. The values of drop temperature and drop dry/wet radii at the newly introduced bin boundaries are linearly interpolated from the values at the boundaries of the bin being split.

The refinement criterion and the refinement procedure are local to a given bin and thus different bins may be split at different times during the integration.

In principle, the presented approach replaces the single parameter of the discretization, the number of bins, with two new parameters: the *initial number of bins* and the *tolerance*. The former determines the uncertainty related to the discretization of the initial condition (initial dry radii). The later controls the uncertainty associated with the final spectrum, and has a physical meaning, being the highest number of droplets allowed to reside in a bin laying in between the two modes of the final aerosol spectrum (i.e. modes of activated and non-activated particles).

### 2.6 Implementation of the model

The program is implemented in an object-oriented manner in C++. The implementation is build upon the Boost.Units framework for dimensional analysis of the code at compilation time (Schabel and Watanabe, 2008) hence a physical unit is assigned to every variable/expression in the code with no performance penalty. The GNU Scientific Library (Galassi et al., 2009) is used for root-bracketing using the Brent-Dekker method (cf. Sect. 2.4 herein and Sect. 33.8 therein) and for root-polishing using the Steffensen method (cf. Sect. 3.4 herein and Sect. 33.9 therein). The ODE system is solved using the CVODE solver (Cohen and Hindmarsh, 1996) interfaced through the SUNDIALS package (Hindmarsh et al., 2005). CVODE is a C-written successor to the

Fortran-written VODE solver and a close relative of the Fortran-written LSODE solver. LSODE was used e.g. in Ghan et al. (1998), Nenes et al. (2001b) and Romakkaniemi et al. (2006) while two out of five models compared in Kreidenweis et al. (2003) and the model of Debry et al. (2007) were based on VODE.

The source code of the program is available as an electronic supplement of this paper and is released under the GNU General Public License. All model parameters are passed using UNIX-like command-line options. Toggling such settings of the model as transition régime corrections, the Gibbs-Kelvin effect or the adaptivity do not require recompilation. Similarly, altering the numerical solution parameters such as the tolerances or switching from BDF to Adams-Moulton method for ODE integration is possible using command-line options. A web-based interface (written in HTML/PHP) allowing alteration of all model options, visualisation of single simulation results, as well as control of parallel runs of simulations with different input parameters is included.

### 3 Example results

#### 3.1 Example run without adaptivity: sea-salt/sulfate competition in marine aerosol activation

Ghan et al. (1998) presented an analysis of relative importance of sea-salt and sulfate particles during CCN activation. The study was based on a series of simulations using a moving-sectional model of CCN activation. We use here a similar set-up for discussing an example model run without adaptivity and relatively low spectral resolution (45 bins over the 1 nm–100  $\mu\text{m}$  radius range).

In the set-up the initial aerosol content of the air parcel is described by a sum of a single-mode log-normal distribution of ammonium sulfate aerosol, and a tri-modal log-normal distribution of sodium chloride aerosol. The parameters of all modes are listed in Table 1 and are based on measurement-data fits summarised in O'Dowd et al. (1997, values for horizontal wind speed of 15 m/s were used).

## Adaptive method of lines for CCN activation

S. Arabas and  
H. Pawlowska

[Title Page](#)

[Abstract](#)

[Introduction](#)

[Conclusions](#)

[References](#)

[Tables](#)

[Figures](#)



[Back](#)

[Close](#)

[Full Screen / Esc](#)

[Printer-friendly Version](#)

[Interactive Discussion](#)



A steady updraft  $w=0.25$  m/s is driving the changes in the parcel's temperature, pressure, and relative humidity which are initially set at 280 K, 1000 hPa and 99%, respectively. The integration is performed for 250 s.

A summary of evolution of the aerosol spectra is presented in Fig. 1 (see figure caption for details). The shift towards larger sizes of the initial wet spectra (green lines in Fig. 1a) with respect to the initial dry spectra (red lines) reflects the growth of particles up to RH=99% calculated assuming equilibrium condition (cf. O'Dowd et al., 1997, Fig. 4 therein). Further growth of the aerosol is calculated resolving the diffusion kinetics, and leads to activation of CCN and forming cloud-droplets (peaks on right-hand side of the final blue spectra in Fig. 1b). The final spectra of both sulphate and sea-salt particles are distinctly bi-modal. The large-particle mode corresponds to cloud droplets, and is visible in both sulphate and sea-salt distribution. The small-particle mode corresponds to unactivated particles. The largest droplets were formed on sea-salt aerosol. For both aerosol components, the region of spectra between the two modes of the final PDFs is represented with a single bin spanning over an order of magnitude in radius. This very section(s) is hereinafter referred to as the critical section(s) following Korhonen et al. (2005).

Figure 2 presents the time-evolution of particle sizes, particle temperatures (colour scale representing  $T_w - T$ ), and the time/height profile of relative humidity. Wet radii corresponding to the two chemical components considered are plotted using circles and diamonds. The differences in wet radii for the same dry size (i.e. the differences arising from the differences in water activity for sea-salt and sulphate solutions) are most pronounced in the left-hand side of the plot (i.e. solution droplets of less than 10 nm in radius). Elsewhere, the two symbols (i.e. circles and diamond) overlap. The symbols are drawn every fiftieth time-step of the solver, and what follows the time-step adjustments made by the solver may be observed.

Four phases of the process can be distinguished (Howell, 1949). First, the particles grow slowly approximately until the relative humidity reaches 100%. From then on, the relative humidity does not fall below 100% and hence all subsequent phases occur at

## Adaptive method of lines for CCN activation

S. Arabas and  
H. Pawlowska

[Title Page](#)[Abstract](#)[Introduction](#)[Conclusions](#)[References](#)[Tables](#)[Figures](#)[Back](#)[Close](#)[Full Screen / Esc](#)[Printer-friendly Version](#)[Interactive Discussion](#)

## Adaptive method of lines for CCN activation

S. Arabas and  
H. Pawlowska

Title Page

Abstract

Introduction

Conclusions

References

Tables

Figures



Back

Close

Full Screen / Esc

Printer-friendly Version

Interactive Discussion



supersaturation with respect to the plane surface of pure water. The second phase is characterised by a rapid growth of particles in the 0.5–5  $\mu\text{m}$  range, and continuous increase of the relative humidity until reaching a maximum value of 100.2%. In the third phase, occurring roughly from 120 s until 150 s, the rate of growth of particles stabilizes throughout the whole spectrum, with the exception of the region separating the unactivated and activated modes. There, one of the bin-boundaries undergoes a different evolution for sulphate and sea-salt aerosol, initially having equal volume of dry material (highlighted with the thick light-gray bifurcated line in the background in Fig. 2). The boundary of the very bin in the sulphate spectrum becomes the smallest one in the activated part of the spectrum, while the one of the sea-salt aerosol is the largest one in the unactivated part of the spectrum. The relative humidity decreases during the third phase. Finally, the fourth phase of the growth represents a quasi-equilibrium state with activated droplets steadily growing at almost constant relative humidity.

The characteristics of the cloud-droplet spectra (spectrum moments calculated over the 1  $\mu\text{m}$ –25  $\mu\text{m}$  radius range) are presented in Fig. 3. The shapes of both spectra (sea-salt and sulphate solution droplets) are plotted at six intermediate altitudes (histograms constructed with thick and thin blue lines, respectively). The cloud droplet specific number concentration (turquoise line) increases till about 140 s (35 m), and stays constant afterwards. The mean radius (thick orange line) increases continuously with height from the onset of drop formation till the end of the model run. The standard deviation of the drop radius (thin orange lines) stays approximately constant. The drops formed on sulphate aerosol dominate in the small-size part of the spectrum, while the sea-salt aerosol took part in formation of the largest drops.

### 3.2 Sensitivity to the discretization resolution (without adaptivity)

Apart from the physical parameters of the model (such as vertical velocity profile), and the initial values of model variables (such as initial temperature and the dry aerosol spectra), the model results depend on parameters controlling the discretization scheme



are sensitive to the number of bins used to represent the initial spectra of aerosol. The maximum supersaturation is the only quantity not exhibiting significant variation. The variability associated with the changes in the number of bins is in some cases stronger than due to different chemical composition or updraft velocity (e.g.  $\sigma_r$  in the marine case). Gradual increase of the number of bins does lead to the convergence of the result to an asymptotic value; however, arguably 300 bins is not a sufficient number in some cases. Clearly, the results obtained with less than 100–150 bins are characterised by significant uncertainty.

The observed range of values of CDNC is roughly in line with observations reported in Kreidenweis et al. (2003) and Korhonen et al. (2005). While the differences in the model formulations, and the differences in model set-ups rule out direct comparison of the results, it is worth to mention several of observations from the two mentioned studies. In both cases the focus was given to the drop number concentration. Kreidenweis et al. (2003, Par. 22 and Fig. 8 therein) compared results from four different models, running them with different number of bins ranging from 20 to 100. The bins were spaced equally in logarithm of radius and in all cases covered at least two decades of the 1 nm–10  $\mu$ m size range. The variability of drop number concentrations was observed for all of the models. The discrepancies between the results obtained with the same model but with different number of bins reached ca. 10%. Korhonen et al. (2005) compared results obtained using five different activation schemes run at low spectral resolution (10 bins within the 10 nm–1.5  $\mu$ m range) with a high-resolution run in which 500 bins were used. The variations were analysed separately for marine, rural, and urban aerosol, and for a variety of vertical velocities (all below 1 m/s). Predictions of the most accurate low-resolution models differed from the high-resolution calculations by roughly, up to 1%, 10% and 50% for marine, rural, and urban aerosol, respectively (Korhonen et al., 2005, Fig. 3 therein).

The problem of the sensitivity of the moving-sectional model results to the spectrum discretization resolution was also discussed in Takeda and Kuba (1982, Sect. 2.5 therein) where the authors mention large influence of the number of particles in a

## Adaptive method of lines for CCN activation

S. Arabas and  
H. Pawlowska

Title Page

Abstract

Introduction

Conclusions

References

Tables

Figures

⏪

⏩

◀

▶

Back

Close

Full Screen / Esc

Printer-friendly Version

Interactive Discussion

critical section on the total number of activated cloud droplets, as well as broadening of the cloud droplet size spectrum with increasing number of bins used. Ghan et al. (1998) used bins of equal number of particles, as opposed to the present logarithmic layout, effectively increasing the discretization resolution near the critical section(s).

### 3.3 Example results with adaptivity

The same series of simulations as presented in the previous section was repeated with adaptivity. The tolerances were set to  $\min(0.5\% \cdot N_m, 50 \mu\text{g}^{-1})$  using  $N_m$  of the accumulation mode (see Table 2) giving  $0.3 \mu\text{g}^{-1}$ ,  $4 \mu\text{g}^{-1}$ ,  $11.5 \mu\text{g}^{-1}$  and  $50 \mu\text{g}^{-1}$  for marine, clean continental, average background and urban cases, respectively. The results of multiple simulations with adaptivity are summarized in Fig. 5 intended for direct comparison with Fig. 4. The previously observed variability of the results with varying number of bins is visibly suppressed confirming the efficacy of the proposed method. The quality of the results (i.e. the stability with regard to the number of initial bins) obtained with low initial number of bins is significantly enhanced, in particular in the case of LWC. This suggests that introduction of the adaptivity helps the model to correctly resolve both droplet mass- and droplet number-related quantities, even though the model is formulated using particle number distributions. Both the effective radius  $r_{\text{eff}}$  and cloud-droplet number concentration CDNC do not exhibit virtually any variability (both being the very focus quantities of the studies on cloud-radiative properties, cf. e.g., Brenguier et al., 2000, and references therein). Comparison of Figs. 4 and 5 confirms that i) the sensitivity of the model-predicted values of CDNC to number of bins observed by Kreidenweis et al. (2003) and Korhonen et al. (2005) is related to the poor representation of the spectrum shape near the critical section(s); ii) the adaptive discretization scheme correctly identifies the critical section(s); iii) the proposed refinement strategy helps to limit the uncertainty of the results.

Figure 6 summarizes the relation between the initial and final number of bins, and thus provides a brief estimate of the memory/CPU footprint of the adaptive refinement scheme. The key observation is that the final number of bins corresponding to

## Adaptive method of lines for CCN activation

S. Arabas and  
H. Pawlowska

Title Page

Abstract

Introduction

Conclusions

References

Tables

Figures



Back

Close

Full Screen / Esc

Printer-friendly Version

Interactive Discussion





ca. 50 bins on the abscissa (i.e. roughly the number of bins needed to obtain convergence with adaptivity) is, in general, lower than the number of bins needed to obtain convergence without adaptivity. Consequently, the method offers a reduction of computational effort needed to obtain results of a given precision.

An in-detail comparison of one of the simulations presented in Figs. 4 and 5 is presented in Fig. 7a (without adaptivity) and 7b (with adaptivity). The vertical velocity was set at 1 m/s, the aerosol size spectrum was initialized with the *average background* distribution, and the composition was assumed to be pure ammonium sulphate. To enhance the readability of the figure by lowering the number of bins, the initial number of bins was set at 55, and the tolerance was decreased to  $46 \mu\text{g}^{-1}$ . During the simulation with adaptivity 14 bins were added to the spectrum. There are two most evident differences among the plots in Fig. 7a and b. First, the final concentration calculated with adaptivity is about 15% higher, and consequently the predicted average drop radius is smaller. Second, the shape of the spectra at different heights is asymmetric for the case without adaptivity.

Enabling adaptivity, and thus increasing the resolution of the discretization in the very region of the spectrum where the drop-growth is most vigorous, allows the model to resolve the shape of the left-hand side slope of the droplet spectrum. This suggests that the asymmetry of the drop spectrum near cloud base, predicted by the model without adaptivity, is a numerical artifact. Finding support for this observation in experimental data is difficult as most of the cloud droplet spectrometers nowadays are optical instruments which, for physical reasons, cannot sense the smallest (i.e.  $<1.5 \mu\text{m}$  in radius) cloud droplets (see e.g., Fig. 10a in Lawson and Blyth, 1998, presenting the cloud spectra 50 m above cloud base as measured by three different instruments).

The ability of the model to faithfully resolve the spectrum shape at the very onset of droplet growth is of potential importance for the development of parameterizations of the activation process for use in cloud-resolving hydrodynamical models (see e.g., the discussion in Grabowski and Wang, 2009, where the authors underline the need for parameterizing the initial width of the spectrum of activated droplets).

## Adaptive method of lines for CCN activation

S. Arabas and  
H. Pawlowska

[Title Page](#)[Abstract](#)[Introduction](#)[Conclusions](#)[References](#)[Tables](#)[Figures](#)[Back](#)[Close](#)[Full Screen / Esc](#)[Printer-friendly Version](#)[Interactive Discussion](#)



Comparison of the right-hand side panels of Fig. 7a and b suggests that the adaptivity contributes as well to a better representation of the transition-régime corrections in the model. The increase of the number of bins near 100 nm results in probing the transition-régime interpolation formulæ at denser intervals.

### 5 3.4 Comparison with the Twomey's analytical formula

In his seminal paper of 1959, Twomey presented a derivation of an analytical solution of the CCN activation problem. His solution offers two robust expressions for upper bounds of maximum supersaturation and cloud drop concentration. The latter have since been widely used in cloud modelling (cf. e.g., the discussion of Grabowski et al., 2010, and references therein).

In the formulæ of Twomey (1959) the supersaturation is expressed in terms of the dew-point elevation:

$$E = T_d(\rho_v) - T \quad (26)$$

where the dew-point temperature  $T_d = \rho_{vs}^{-1}(\rho_v)$  is the inverse function of the equilibrium vapour pressure, and  $\rho_v = \rho_v(p, q_v)$  is the partial pressure of water vapour. In the Twomey's solution, the upper bound of the maximum dew-point elevation is a function of vertical air velocity  $w$ , and two parameters describing the aerosol  $k_T$  and  $c_T$ :

$$E_{\max} < \left[ \frac{1.63 \times 10^{-3} \cdot w^{3/2}}{c_T \cdot k_T \cdot B(3/2, k_T/2)} \right]^{\frac{1}{k_T+2}} \quad (27)$$

where  $B$  denotes the Euler beta function, the  $1.63 \times 10^{-3}$  coefficient corresponds to temperature of  $10^\circ\text{C}$  and pressure of 800 hPa, the vertical velocity  $w$  is expressed in centimetres per second,  $c_T$  is expressed in  $\text{cm}^{-3}$  and  $E$  is expressed in K. The upper bound of the drop concentration is expressed as a function of  $k_T$ ,  $c_T$  and  $E_{\max}$ :

$$\text{CDNC} < c_T \cdot (E_{\max})^{k_T} \quad (28)$$

## Adaptive method of lines for CCN activation

S. Arabas and  
H. Pawlowska

Title Page

Abstract

Introduction

Conclusions

References

Tables

Figures



Back

Close

Full Screen / Esc

Printer-friendly Version

Interactive Discussion



where CDNC is expressed in  $\text{cm}^{-3}$ .

Twomey (1959) has given three sets of example value pairs for  $k_T$  and  $c_T$ , including two for *marine* aerosol and one for *remote continental* aerosol. Twomey's relations are compared here with results of multiple simulations using the present model. Aerosol spectra from (Whitby, 1978) are used for defining the dry aerosol spectra. The *marine* and *clean continental* distributions defined in Table 2 are compared with Twomey's *marine (A)* ( $k_T=1/3$ ,  $c_T=125 \text{ cm}^{-3}$ ) and *remote continental* ( $k_T=2/5$ ,  $c_T=2000 \text{ cm}^{-3}$ ) cases, respectively. The model was initialized at temperature of  $10^\circ\text{C}$ , pressure of 800 hPa, and relative humidity of 99.5% to closely resemble Twomey's set-up. The initial number of bins was set to 40, simulations were run with adaptivity, with the tolerance set at  $5 \mu\text{g}^{-1}$ . As with previous set-ups, all calculations were done both for pure ammonium sulphate and pure sodium chloride for the purpose of comparing the degree to which the results are sensitive to chemical composition as opposed to other parameters. For both chemical species (i.e. NaCl and  $(\text{NH}_4)_2\text{SO}_4$ ) and both size spectra (i.e. marine and continental) the model was run at 25 different updraft velocities  $w$  between 0.01 and 5 m/s (with an increment of 0.2 m/s).

In Fig. 8 the model results are compared with the values obtained using the Twomey's formulæ for the upper bounds of drop concentration and maximum dew-point elevation. The plotted values of drop concentration correspond to the concentrations at the altitude of 200 m above the initial altitude thus in the fourth stage of the activation process when the concentration is nearly constant. The maximum dew-point elevation corresponds to the difference between the dew-point and the parcel temperature at the time-step of the maximum relative humidity (supersaturation). The dew-point temperature is computed by iteratively (Steffensen method, cf. Sect 2.6) inverting Eq. (15).

The comparison clearly shows that the model predictions do fall below the upper-bound solution within the whole range of vertical velocities. The distinction between the marine and continental aerosol regime is comparable. The shapes of all model-predicted relations resemble the ones plotted using Twomey's formulæ. The difference between the model-predicted and the limit maximum dew-point elevations is

## Adaptive method of lines for CCN activation

S. Arabas and  
H. Pawlowska

Title Page

Abstract

Introduction

Conclusions

References

Tables

Figures

⏪

⏩

◀

▶

Back

Close

Full Screen / Esc

Printer-friendly Version

Interactive Discussion

noteworthy; however, no further quantitative analysis seem feasible taking into account the degree of approximation employed in the Twomey's solution (including neglect of the Gibbs-Kelvin, Raoult and transition-régime effects on the condensation process) and its upper-bound nature (see e.g., the discussion in Johnson, 1981) as well as the possible discrepancies between the aerosol described in Whitby's and Twomey's works

## 4 Summary and outlook

A simple yet robust air-parcel model of cloud drop formation utilizing the adaptive method of lines was formulated. Implementation of the model was discussed and its source code is available as an electronic supplement of the paper. Example results for single- and multi-component aerosol, with- and without adaptivity, for different vertical velocities, and different initial aerosol spectra were presented.

The key advantages of the introduced spectrum refinement method are i) the suppression of bogus sensitivity of the model results to the discretization parameters when working in low resolution; ii) the introduction of physically-based uncertainty-related parameters controlling the spectrum discretization independently of the resolution of model input; iii) the enhancement in resolution of the shape of the left edge of the model-predicted cloud drop spectrum; iv) the reduction of computational effort needed to obtain results of a given precision. The discussion of results obtained without adaptivity constitutes an assessment of the uncertainty of results obtained using classical MOL (see Fig. 5).

Presented method is potentially applicable to numerous fields of aerosol-related research where moving-sectional models of aerosol growth are used, including i) studies of closure among the CCN activation theory and in-situ measurements of cloud properties (e.g., Snider et al., 2003); ii) design and calibration of aerosol instruments (e.g., Nenes et al., 2001a); iii) research on the nucleation of aerosol in the atmosphere (e.g., Anttila et al., 2004); iv) estimations of the impact of aerosol properties and the kinetics of its growth on cloud albedo (e.g., Nenes et al., 2001b) and the related assessments

## Adaptive method of lines for CCN activation

S. Arabas and  
H. Pawlowska

[Title Page](#)

[Abstract](#)

[Introduction](#)

[Conclusions](#)

[References](#)

[Tables](#)

[Figures](#)



[Back](#)

[Close](#)

[Full Screen / Esc](#)

[Printer-friendly Version](#)

[Interactive Discussion](#)



of geoengineering techniques for global warming mitigation (e.g., Bower et al., 2006); v) investigations on cloud processing of aerosol (e.g., Romakkaniemi et al., 2006); vi) construction and evaluation of parameterizations to be employed in hydrodynamical models run at resolutions where CCN activation is a sub-scale process (e.g., Feingold and Heymsfield, 1992). An example of the last application is fitting parameters  $c_T$  and  $k_T$  of the Twomey's formula for CDNC to the model-predicted values (cf. Sect. 3.4 and Fig. 8 herein).

Preliminary validation of the model completes a proof-of-concept stage of its development. Further validations are underway, and are aimed at comparing model results with measurements, and at enhancing model formulation. The implemented logic for efficiently handling variable number of bins shall be a valuable component for implementing an accurate treatment of the drop coagulation process using the moving-sectional approach. These developments will be reported in future publications.

**Supplementary material related to this article is available online at:**  
<http://www.geosci-model-dev-discuss.net/3/1271/2010/gmdd-3-1271-2010-supplement.pdf>.

*Acknowledgements.* This work was supported by the European Union 6 FP IP EUCAARI (European Integrated project on Aerosol Cloud Climate and Air Quality interactions) No. 036833-2 and the Polish MNiSW grant 396/6/PR UE/2007/7. We thank Jean-Louis Brenguier (Météo-France) for providing an inspiration for this study. Comments on the manuscript by Wojciech W. Grabowski (NCAR) are acknowledged. We also appreciate the work of the developers of the free/libre/open-source software which served as a base for the implementation of the model: Boost.Units (<http://www.boost.org>), SUNDIALS (<http://computation.llnl.gov/casc/sundials/>), GSL (<http://www.gnu.org/software/gsl/>) and gnuplot (<http://www.gnuplot.info/>).

## Adaptive method of lines for CCN activation

S. Arabas and  
H. Pawlowska

Title Page

Abstract

Introduction

Conclusions

References

Tables

Figures



Back

Close

Full Screen / Esc

Printer-friendly Version

Interactive Discussion



## References

- Aitken, J.: On boiling, condensing, freezing, and melting, *T. Roy. Scott. Soc. Arts*, 9, 7–17, (reprinted in: *The Collected Scientific Papers of John Aitken, LLD, FRS*, edited by: Knott, C. G., Cambridge Univ. Press, 1923), 1875. 1272
- 5 Anttila, T., Kerminen, V.-M., Kulmala, M., Laaksonen, A., and O'Dowd, C. D.: Modelling the formation of organic particles in the atmosphere, *Atmos. Chem. Phys.*, 4, 1071–1083, doi:10.5194/acp-4-1071-2004, 2004. 1297
- Bower, K., Choulaton, T., Latham, J., Sahraei, J., and Salter, S.: Computational assessment of a proposed technique for global warming mitigation via albedo-enhancement of marine stratocumulus clouds, *Atmos. Res.*, 82, 328–336, doi:10.1016/j.atmosres.2005.11.013, 2006. 1298
- 10 Brenguier, J.-L., Pawlowska, H., Schüller, L., Preusker, R., Fischer, J., and Fouquart, Y.: Radiative properties of boundary layer clouds: droplet effective radius versus number concentration, *J. Atmos. Sci.*, 57, 803–821, doi:10.1175/1520-0469(2000)057<0803:RPOBLC>2.0.CO;2, 2000. 1293
- 15 Cohen, S. and Hindmarsh, A.: CVODE, A stiff/nonstiff ODE solver in C, *Comput. Phys.*, 10, 138–143, (also available as LLNL technical report UCRL-JC-121014), 1996. 1284, 1287
- Debry, E., Fahey, K., Sartelet, K., Sportisse, B., and Tombette, M.: Technical Note: A new Size REsolved Aerosol Model (SIREAM), *Atmos. Chem. Phys.*, 7, 1537–1547, doi:10.5194/acp-7-1537-2007, 2007. 1274, 1288
- 20 Feingold, G. and Heymsfield, A.: Parameterizations of condensational growth of droplets for use in general circulation models, *J. Atmos. Sci.*, 49, 2325–2342, doi:10.1175/1520-0469(1992)049<2325:POCGOD>2.0.CO;2, 1992. 1274, 1298
- Fitzgerald, J.: Effect of aerosol composition on cloud droplet size distribution: a numerical study, *J. Atmos. Sci.*, 31, doi:10.1175/1520-0469(1974)031<1358:EOACOC>2.0.CO;2, 1974. 1273, 1274
- 25 Fuchs, N. and Sutugin, A.: *Highly Dispersed Aerosols*, Ann Arbor Science Publ., Ann Arbor, Michigan, 1970. 1277
- Galassi, M., Davies, J., Theiler, J., Gough, B., Jungman, G., Alken, P., Booth, M., and Rossi, F.: *GNU Scientific Library Reference Manual*, 3rd edn., Network Theory Ltd., Bristol, 2009. 1287
- 30 Gelbard, F.: Modelling multicomponent aerosol particle growth by vapor condensation, *Aerosol Sci. Tech.*, 12, 399–411, doi:10.1080/027868290008959355, 1990. 1273, 1274, 1280

## Adaptive method of lines for CCN activation

S. Arabas and  
H. Pawlowska

Title Page

Abstract

Introduction

Conclusions

References

Tables

Figures



Back

Close

Full Screen / Esc

Printer-friendly Version

Interactive Discussion



**Adaptive method of lines for CCN activation**S. Arabas and  
H. Pawlowska[Title Page](#)[Abstract](#)[Introduction](#)[Conclusions](#)[References](#)[Tables](#)[Figures](#)[⏪](#)[⏩](#)[◀](#)[▶](#)[Back](#)[Close](#)[Full Screen / Esc](#)[Printer-friendly Version](#)[Interactive Discussion](#)

- Ghan, S., Guzman, G., and Abdul-Razzak, H.: Competition between sea salt and sulfate particles as cloud condensation nuclei, *J. Atmos. Sci.*, 55, 3340–3347, doi:10.1175/1520-0469(1998)055<3340:CBSSAS>2.0.CO;2, 1998. 1288, 1293, 1304
- Grabowski, W. W. and Wang, L.-P.: Diffusional and accretional growth of water drops in a rising adiabatic parcel: effects of the turbulent collision kernel, *Atmos. Chem. Phys.*, 9, 2335–2353, doi:10.5194/acp-9-2335-2009, 2009. 1294
- Grabowski, W., Andrejczuk, M., and Wang, L.-P.: Droplet growth in a bin warm-rain scheme with Twomey CCN activation, *Atmos. Res.*, submitted, 2010. 1274, 1295
- Hänel, G.: The role of aerosol properties during the condensational stage of cloud: a reinvestigation of numerics and microphysics, *Beitr. Phys. Atmos.*, 60, 321–339, 1987. 1274
- Hindmarsh, A., Brown, P., Grant, K., Lee, S., Serban, R., Shumaker, D., and Woodward, C.: SUNDIALS: suite of nonlinear and differential/algebraic equation solvers, *ACM T. Math. Software*, 31, 363–396, doi:10.1145/1089014.1089020, (also available as LLNL technical report UCRL-JP-200037), 2005. 1287
- Howell, W.: The growth of cloud drops in uniformly cooled air, *J. Meteorol.*, 6, 134–149, doi:10.1175/1520-0469(1949)006<0134:TGOCDI>2.0.CO;2, 1949. 1273, 1274, 1282, 1289
- Jacobson, M.: *Fundamentals of Atmospheric Modeling*, Cambridge Univ. Press, Cambridge, 1st edn., (2nd edn.: 2005), 1999. 1274
- Johnson, D.: Analytical solutions for cloud-drop concentration, *J. Atmos. Sci.*, 38, 215–218, doi:10.1175/1520-0469(1981)038<0215:ASFCDI>2.0.CO;2, 1981. 1297
- Khvorostyanov, V. and Curry, J.: Parameterization of cloud drop activation based on analytical asymptotic solutions to the supersaturation equation, *J. Atmos. Sci.*, 65, 1905–1925, doi:10.1175/2009JAS2811.1, 2009. 1273
- Köhler, H.: The nucleus in and the growth of hygroscopic droplets, *T. Faraday Soc.*, 32, 1152–1161, doi:10.1039/TF9363201152, 1936. 1273
- Korhonen, H., Kerminen, V.-M., Lehtinen, K. E. J., and Kulmala, M.: CCN activation and cloud processing in sectional aerosol models with low size resolution, *Atmos. Chem. Phys.*, 5, 2561–2570, doi:10.5194/acp-5-2561-2005, 2005. 1274, 1289, 1292, 1293
- Kornfeld, P.: Numerical solution for condensation of atmospheric vapor on soluble and insoluble nuclei, *J. Atmos. Sci.*, 27, 256–264, doi:10.1175/1520-0469(1970)027<0256:NSFCOA>2.0.CO;2, 1970. 1273
- Kraus, E. and Smith, B.: Theoretical aspects of cloud drop distributions, *Aust. J. Sci. Res.*, 2, 376–388, doi:10.1071/CH9490376, 1949. 1273

## Adaptive method of lines for CCN activation

S. Arabas and  
H. Pawlowska

Title Page

Abstract

Introduction

Conclusions

References

Tables

Figures

⏪

⏩

◀

▶

Back

Close

Full Screen / Esc

Printer-friendly Version

Interactive Discussion

- Kreidenweis, S., Walcek, C., Feingold, G., Gong, W., Jacobson, M., Kim, C.-H., Liu, X., Penner, J., Nenes, A., and Seinfeld, J.: Modification of aerosol mass and size distribution due to aqueous phase SO<sub>2</sub> oxidation in clouds: comparisons of several models, *J. Geophys. Res.*, 108, 4213, doi:10.1029/2002JD002697, 2003. 1274, 1288, 1291, 1292, 1293
- 5 Kulmala, M., Asmi, A., Lappalainen, H. K., Carslaw, K. S., Pschl, U., Baltensperger, U., Hov, Ø., Brenquier, J.-L., Pandis, S. N., Facchini, M. C., Hansson, H.-C., Wiedensohler, A., and O'Dowd, C. D.: Introduction: European Integrated Project on Aerosol Cloud Climate and Air Quality interactions (EUCAARI) – integrating aerosol research from nano to global scales, *Atmos. Chem. Phys.*, 9, 2825–2841, doi:10.5194/acp-9-2825-2009, 2009. 1272
- 10 Laaksonen, A., Vesala, T., Kulmala, M., Winkler, P. M., and Wagner, P. E.: Commentary on cloud modelling and the mass accommodation coefficient of water, *Atmos. Chem. Phys.*, 5, 461–464, doi:10.5194/acp-5-461-2005, 2005. 1277
- Langmuir, I.: Super-cooled water droplets in rising currents of cold saturated air, Tech. Rep. RL-223, General Electric Company, (reprinted in *The Collected Works of Irving Langmuir*, edited by: Suits, C. G. and Way, H. E., Pergamon Press, Oxford, 1961), 1944. 1277
- 15 Lawson, R. and Blyth, A.: A comparison of optical measurements of liquid water content and drop size distribution in adiabatic regions of Florida cumuli, *Atmos. Res.*, 47–48, 671–690, doi:10.1016/S0169-8095(98)00063-5, 1998. 1294
- Lee, I.-Y. and Pruppacher, H.: A comparative study on the growth of cloud drops by condensation using an air parcel model with and without entrainment, *Pure Appl. Geophys.*, 115, 523–545, doi:10.1007/BF00876119, 1977. 1273
- 20 Mason, B.: *The Physics of Clouds*, 1st edn., Oxford Univ. Press, London, (2nd edn.: Clarendon Press, Oxford, 1971), 1957. 1282
- Maxwell, J.: Diffusion, in: *Encyclopædia Britannica*, (reprinted in *The Scientific Papers of James Clerk Maxwell*, edited by: Niven, W. D., Dover Publications, New York, 1965), 625–646, 1878. 1273
- 25 McFiggans, G., Artaxo, P., Baltensperger, U., Coe, H., Facchini, M. C., Feingold, G., Fuzzi, S., Gysel, M., Laaksonen, A., Lohmann, U., Mentel, T. F., Murphy, D. M., O'Dowd, C. D., Snider, J. R., and Weingartner, E.: The effect of physical and chemical aerosol properties on warm cloud droplet activation, *Atmos. Chem. Phys.*, 6, 2593–2649, doi:10.5194/acp-6-2593-2006, 2006. 1272
- 30 Mordy, W.: Computations of the growth by condensation of a population of cloud droplets, *Tellus*, 11, 16–44, doi:10.1111/j.2153-3490.1959.tb00003.x, 1959. 1273, 1274



## Adaptive method of lines for CCN activation

S. Arabas and  
H. Pawlowska

Title Page

Abstract

Introduction

Conclusions

References

Tables

Figures

⏪

⏩

◀

▶

Back

Close

Full Screen / Esc

Printer-friendly Version

Interactive Discussion

- Neiburger, M. and Chien, C.: Computations of the growth of cloud drops by condensation using an electronic digital computer, in: *Physics of Precipitation*, edited by: Weickmann, H., 191–210, AGU, Washington, 1960. 1273, 1274
- 5 Nenes, A., Chuang, P., Flagan, R., and Seinfeld, J.: A theoretical analysis of cloud condensation nucleus (CCN) instruments, *J. Geophys. Res.*, 106, 3449–3474, doi:10.1029/2000JD900614, 2001a. 1297
- Nenes, A., Ghan, S., Abdul-Razzak, H., Chuang, P., and Seinfeld, J.: Kinetic limitations on cloud droplet formation and impact on cloud albedo, *Tellus B*, 53, 133–149, doi:10.1034/j.1600-0889.2001.d01-12.x, 2001b. 1274, 1288, 1291, 1297, 1305
- 10 O'Dowd, C., Smith, M., Consterdine, I., and Lowe, J.: Marine aerosol, sea-salt, and the marine sulphur cycle: a short review, *Atmos. Environ.*, 31, 73–80, doi:10.1016/S1352-2310(96)00106-9, 1997. 1288, 1289, 1304
- Petters, M. D. and Kreidenweis, S. M.: A single parameter representation of hygroscopic growth and cloud condensation nucleus activity, *Atmos. Chem. Phys.*, 7, 1961–1971, doi:10.5194/acp-7-1961-2007, 2007. 1279
- 15 Rogers, R. and Yau, M.: *A Short Course in Cloud Physics*, Butterworth-Heinemann, Woburn, Massachusetts, 1989. 1277
- Romakkaniemi, S., Kokkola, H., Lehtinen, K. E. J., and Laaksonen, A.: The influence of nitric acid on the cloud processing of aerosol particles, *Atmos. Chem. Phys.*, 6, 1627–1634, doi:10.5194/acp-6-1627-2006, 2006. 1288, 1298
- 20 Schabel, M. and Watanabe, S.: Boost.Units: zero-overhead dimensional analysis and unit/quantity manipulation and conversion, in: *Boost Library Documentation*, available at: <http://www.boost.org/doc/libs/> (last access: July 2010), 2008. 1287
- Snider, J., Guibert, S., Brenguier, J.-L., and Putaud, J.-P.: Aerosol activation in marine stratocumulus clouds: 2. Köhler and parcel theory closure studies, *J. Geophys. Res.*, 108, 8629, doi:10.1029/2002JD002692, 2003. 1297
- 25 Squires, P.: The growth of cloud drops by condensation. I. General characteristics, *Aust. J. Sci. Res.*, A5, 59–86, doi:10.1071/CH9520059, 1952. 1273
- Stevens, B. and Feingold, G.: Untangling aerosol effects on clouds and precipitation in a buffered system, *Nature*, 461, 607–613, doi:10.1038/nature08281, 2009. 1272
- 30 Takeda, T. and Kuba, N.: Numerical study of the effect of CCN on the size distribution of cloud droplets. Part I. Cloud droplets in the stage of condensationa growth, *J. Meteorol. Soc. Jpn.*, 60, 978–993, 1982. 1292



**Adaptive method of lines for CCN activation**S. Arabas and  
H. Pawlowska[Title Page](#)[Abstract](#)[Introduction](#)[Conclusions](#)[References](#)[Tables](#)[Figures](#)[Back](#)[Close](#)[Full Screen / Esc](#)[Printer-friendly Version](#)[Interactive Discussion](#)

- Tsuji, M.: On the growth of cloud particles and the degree of supersaturation in convective clouds, *J. Meteorol. Soc. Jpn.*, 28, 122–130, 1950. 1282
- Twomey, S.: The nuclei of natural cloud formation. Part II: The supersaturation in natural clouds and the variation of cloud droplet concentration, *Pure Appl. Geophys.*, 43, 243–249, doi:10.1007/BF01993560, 1959. 1273, 1275, 1295, 1296
- 5 Vesala, T., Kulmala, M., Rudolf, R., Vrtala, A., and Wagner, P.: Models for condensational growth and evaporation of binary aerosol particles, *J. Aerosol Sci.*, 28, 565–598, doi:10.1016/S0021-8502(96)00461-2, 1997. 1282
- Whitby, K.: The physical characteristics of sulfur aerosols, *Atmos. Environ.*, 12, 135–159, doi:10.1016/0004-6981(78)90196-8, (reprinted in: Haagen-Smit Prize Special Supplement, *Atmos. Environ.*, 41, S25–S49, doi:10.1016/j.atmosenv.2007.10.057, 2007), 1978. 1283, 1291, 1296, 1305
- 10 Williams, M. and Loyalka, S.: *Aerosol Science: Theory and Practice*, Pergamon Press, New York, 1991. 1274, 1278, 1283
- 15 Wouwer, A., Saucez, P., and Schiesser, W. (Eds.): *Adaptive Method of Lines*, Chapman and Hall/CRC, Boca Raton, Florida, 2001. 1274, 1286

## Adaptive method of lines for CCN activation

S. Arabas and  
H. Pawlowska

**Table 1.** Aerosol distributions used in the example model run discussed in Sect. 3.1. Data after O’Dowd et al. (1997), as used in Ghan et al. (1998).

Mode	Solute	$N_m$ [cm <sup>-3</sup> ]	$r_m$ [μm]	$\sigma_m$ [1]
Film drop	NaCl	51.1	0.10	1.90
Jet drop	NaCl	2.21	1.00	2.00
Spume drop	NaCl	0.00001	6.00	3.00
Accumulation	(NH <sub>4</sub> ) <sub>2</sub> SO <sub>4</sub>	100	0.08	1.45

[Title Page](#)
[Abstract](#)
[Introduction](#)
[Conclusions](#)
[References](#)
[Tables](#)
[Figures](#)

[Back](#)
[Close](#)
[Full Screen / Esc](#)
[Printer-friendly Version](#)
[Interactive Discussion](#)


## Adaptive method of lines for CCN activation

S. Arabas and  
H. Pawlowska

Title Page

Abstract

Introduction

Conclusions

References

Tables

Figures

⏪

⏩

◀

▶

Back

Close

Full Screen / Esc

Printer-friendly Version

Interactive Discussion

**Table 2.** Aerosol distributions used in the model runs presented in Sects. 3.2–3.4. Data after Whitby (1978), as used in Nenes et al. (2001b).

Spectrum (mode)	$N_m$ [cm <sup>-3</sup> ]	$r_m$ [μm]	$\sigma_m$ [1]
Marine (nuclei)	340	0.005	1.6
Marine (accumulation)	60	0.035	2.0
Marine (coarse)	3.1	0.31	2.7
Clean continental (nuclei)	1000	0.008	1.6
Clean conti. (accumulation)	800	0.034	2.1
Clean conti. (coarse)	0.72	0.46	2.2
Average background (nuclei)	6400	0.008	1.7
Average bg. (accumulation)	2300	0.038	2.0
Average bg. (coarse)	3.2	0.51	2.16
Urban (nuclei)	106 000	0.007	1.8
Urban (accumulation)	32 000	0.027	2.16
Urban (coarse)	0.43	0.43	2.21

**Table 3.** List of symbols.

Symbol	SI unit	Description
$\alpha, \beta$	[1]	coefficients in the BDF formula
$\gamma$	[m <sup>2</sup> ]	helper symbol in Eqs. 17 and 18
$\rho$	[kg/m <sup>3</sup> ]	density of moist air in the parcel
$\rho_l=1000$	[kg/m <sup>3</sup> ]	density of liquid water
$\rho_v$	[kg/m <sup>3</sup> ]	density of water vapour in the parcel
$\sigma=0.072$	[J/m <sup>2</sup> ]	surface tension coefficient of water
$\sigma_m, \sigma_m^{[c]}$	[1]	geometric std dev. of a log-normal mode
$\sigma_r$	[m]	standard deviation of radius of cloud drops
$\kappa^{[c]}$	[1]	chemical-composition parameter for spec. <i>c</i>
$\kappa^{[0]}=1.28$	[1]	CCN-derived value of $\kappa$ for NaCl
$\kappa^{[1]}=0.61$	[1]	CCN-derived value of $\kappa$ for (NH <sub>4</sub> ) <sub>2</sub> SO <sub>4</sub>
$\lambda_D$	[m]	mean free path of water vapour in air
$\lambda_K$	[m]	length scale for heat transfer in air
$a$	[1]	water activity
$b$	[0,1, ...]	bin number enumerator
CDNC	[1/m <sup>3</sup> ]	cloud droplet number concentration
$c$	[0,1, ...]	chemical composition enumerator
$c_l=4218$	[J/kg/K]	specific heat capacity of liquid water
$c_p(q_v)$	[J/kg/K]	specific heat capacity of moist air
$c_{pd}=1005$	[J/kg/K]	specific heat capacity of dry air
$c_{pv}=1850$	[J/kg/K]	specific heat capacity of water vapour
$c_T$	[m <sup>-3</sup> ]	aerosol composition par. in Twomey's form.
$D(\lambda_D, r_w)$	[m <sup>2</sup> /s]	diffusivity of water vapour in air (trans. rég.)
$D_0=2.21 \times 10^5$	[m <sup>2</sup> /s]	diffusivity of water vapour in air (conti. rég.)
$E, E_{\max}$	[K]	dew-point elevation (maximum)
$F(x, t)$	n/a	ODE system right-hand side
$f(x_j)$	n/a	the function used in Newton-Raphson iteration
$g=9.8067$	[m/s <sup>2</sup> ]	gravitational acceleration
$h$	[1,2, ...]	BDF formula order
$i$	[0,1, ...]	solver time-step enumerator
$j$	[0,1, ...]	root-finding iteration enumerator
$K(\lambda_K, r_w)$	[J/m/s/K]	thermal conductivity of air (trans. régime)
$K_0=2.4 \times 10^{-2}$	[J/m/s/K]	thermal conductivity of air (conti. régime)
$k$	[0,1,2, ...]	spectrum moment enumerator
$k_T$	[1]	aerosol composition par. in Twomey's form.
LWC	[kg/m <sup>3</sup> ]	liquid water content
$l_v(T)$	[J/kg]	latent heat of evaporation
$l_{v0}=2.5 \times 10^6$	[J/kg]	latent heat of evaporation at the triple point

## Adaptive method of lines for CCN activation

S. Arabas and  
H. Pawlowska

Title Page

Abstract

Introduction

Conclusions

References

Tables

Figures

◀

▶

◀

▶

Back

Close

Full Screen / Esc

Printer-friendly Version

Interactive Discussion



Table 3. Continued.

Symbol	SI unit	Description
$M$	[kg]	droplet mass
$m$	[0, 1, ...]	log-normal mode enumerator
$N = \text{CDNC} / \rho$	[1/kg]	cloud droplet specific concentration
$N^{[c]}$	[1/kg]	total specific conc. of aerosol in spec. $c$
$N^{[c,b]}$	[1/kg]	specific conc. of aerosol in bin $b$ of spec. $c$
$N_b, N_b^{[c]}$	[1]	number of bins in a size spectrum
$N_c$	[1]	number of chemical components
$N_m, N_m^{[c]}$	[1/m <sup>3</sup> ]	total aerosol conc.in a log-normal mode
$n_d, n_d^{[c]}$	[1/kg/m]	dry aerosol specific conc. density
$n_w^{[c]}$	[1/kg/m]	wet aerosol specific conc. density
$p$	[Pa]	air-parcel pressure
$p_0 = 611.73$	[Pa]	water vapour pressure at the triple point
$p_v$	[Pa]	partial pressure of water vapour
$p_{v\infty}(T)$	[Pa]	equil. vapour press. (plane surf., pure water)
$p_{vs}(T, \dots)$	[Pa]	equil. vapour press. over solution droplet
$Q$	[J]	droplet heat content
$q_v$	[1]	air-parcel specific humidity
$R(q_v)$	[J/K/kg]	gas constant of moist air
$R_d = 287.1$	[J/K/kg]	gas constant of dry air
$R_v = 461.4$	[J/K/kg]	gas constant of water vapour
$\text{RH} = p_v / p_{vs}$	[1]	air-parcel relative humidity
$r_0, r_1, r_a, r_b$	[m]	helper symbols in Eqs. (18) and (25)
$r_{\text{eff}}$	[m]	cloud droplet effective radius
$r_d, r_{dl}^{[c,b]}, r_{dr}^{[c,b]}$	[m]	droplet dry radius (at left/right bin boundary)
$r_m^{[c]}$	[m]	mode radius of a log-normal mode
$r_{\text{min}}, r_{\text{max}}$	[m]	cloud-droplet spectrum range (1 and 25 $\mu\text{m}$ )
$r_w, r_{wl}^{[c,b]}, r_{wr}^{[c,b]}$	[m]	droplet wet radius (at left/right bin boundary)
$S, S_{\text{max}}$	[1]	supersaturation (maximum)
$t, t_i$	[s]	time (at model time-step $i$ )
$T$	[K]	air-parcel temperature
$T'$	[K]	temperature
$T_0 = 273.16$	[K]	temperature of the triple point of water
$T_d$	[K]	dew-point temperature
$T_w, T_{wl}^{[c,b]}, T_{wr}^{[c,b]}$	[K]	droplet temperature (at left/right bin boundary)
$w$	[m/s]	air-parcel vertical velocity
$x$	n/a	ODE set variables vector
$Z_k$	[m <sup>k</sup> /kg]	helper symbol in Eqs. (24) and (25)

**Adaptive method of lines for CCN activation**

S. Arabas and  
H. Pawlowska

Title Page

Abstract

Introduction

Conclusions

References

Tables

Figures

◀

▶

◀

▶

Back

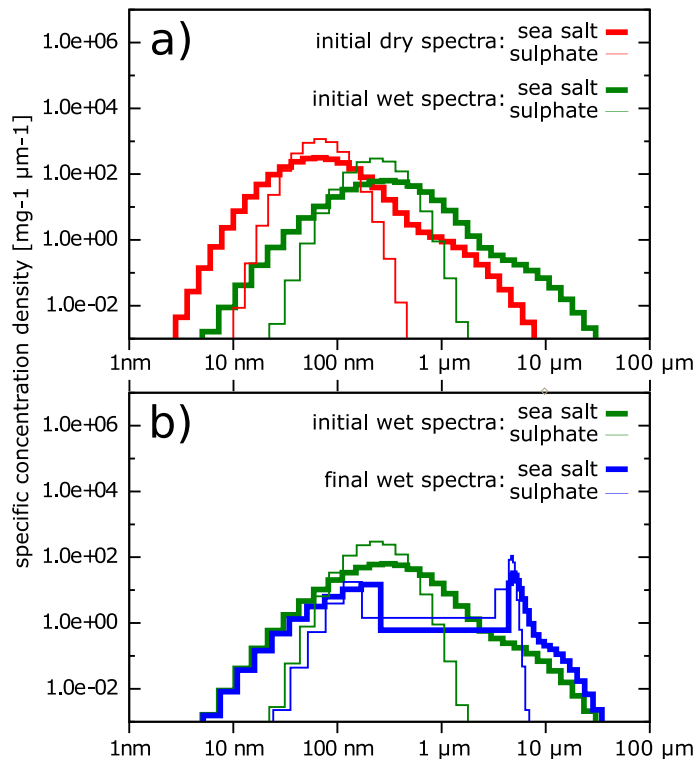
Close

Full Screen / Esc

Printer-friendly Version

Interactive Discussion





**Fig. 1.** A summary of aerosol size spectra evolution as calculated in the model run discussed in Sect. 3.1. The four data sets plotted in plot (a) correspond to the initial dry (red colour), and the initial wet (green colour) spectra for sea-salt (thin lines) and sulphate (thick lines) aerosol. In plot (b) the initial wet spectrum (green colour) is shown again, together with the final wet spectrum (blue colour).

**Adaptive method of lines for CCN activation**

S. Arabas and  
H. Pawlowska

[Title Page](#)

[Abstract](#) | [Introduction](#)

[Conclusions](#) | [References](#)

[Tables](#) | [Figures](#)

[⏪](#) | [⏩](#)

[◀](#) | [▶](#)

[Back](#) | [Close](#)

[Full Screen / Esc](#)

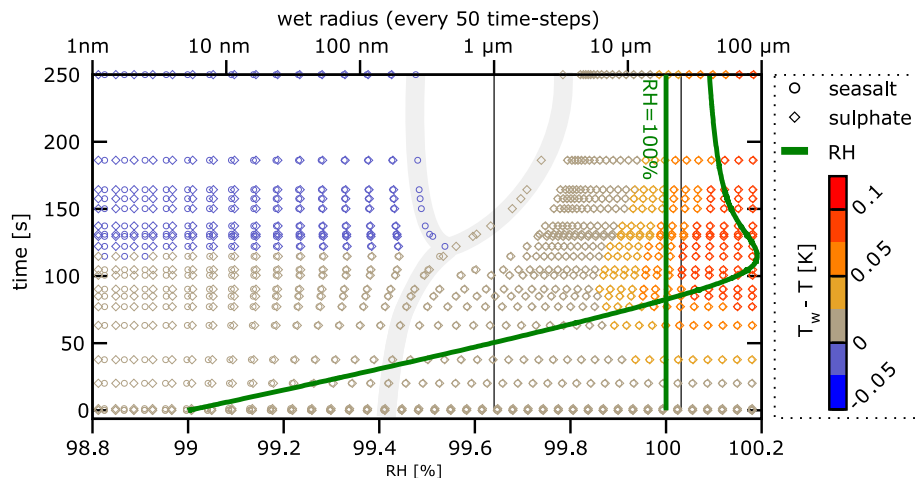
[Printer-friendly Version](#)

[Interactive Discussion](#)



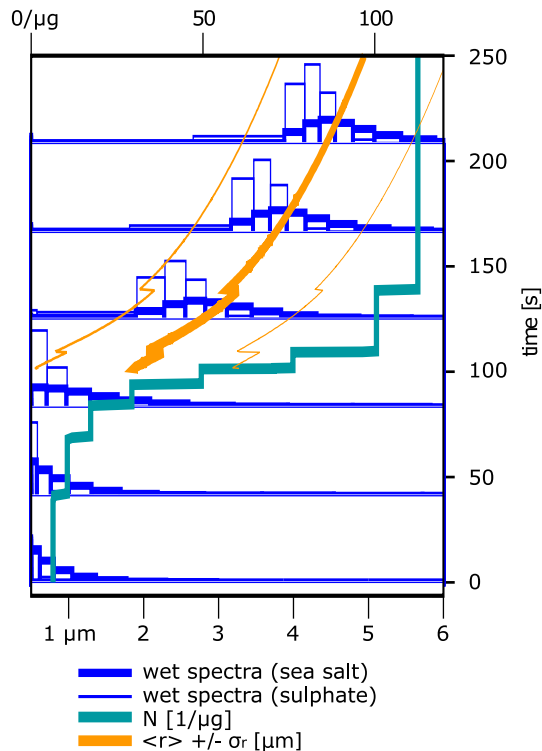
## Adaptive method of lines for CCN activation

S. Arabas and  
H. Pawlowska



**Fig. 2.** Evolution of the aerosol spectra (symbols) and the relative humidity (green curve) as calculated in the model run discussed in Sect. 3.1. Wet radii at bin boundaries are drawn every 50 time-steps. Circles and diamonds correspond to sea-salt and sulphate aerosol, respectively. Colour of the symbols indicate the difference between the temperatures of solution droplets and the surrounding air. The two dark-grey vertical lines at 1 and 25  $\mu\text{m}$  indicate the region of the spectra used for calculating the moments of the cloud-droplet spectrum, as defined by Eq. (25). The thick light-gray bifurcated line in the background is drawn to highlight the two bin boundaries of the same dry radius which undergo markedly different evolution for sulphate and sea-salt aerosol (discussed in the text).

[Title Page](#)
[Abstract](#)
[Introduction](#)
[Conclusions](#)
[References](#)
[Tables](#)
[Figures](#)
[⏪](#)
[⏩](#)
[◀](#)
[▶](#)
[Back](#)
[Close](#)
[Full Screen / Esc](#)
[Printer-friendly Version](#)
[Interactive Discussion](#)



**Fig. 3.** A summary of the evolution of cloud-droplet spectrum as calculated in the model run discussed in Sect. 3.1. The wet spectra are drawn at six selected time-steps using separate histograms for sulphate (thin blue lines) and sea-salt (thick blue lines). The vertical scaling factor is the same for all twelve histograms, and has an arbitrary value. The thick orange line denotes average drop radius, while the two surrounding thin orange lines represent the width of the spectrum ( $\pm\sigma_r$ ). Both the average radius and the standard deviation are shown only after the specific concentration reaches  $50 \mu\text{g}^{-1}$ . The turquoise line denotes specific drop concentration (units at the top axis).

**Adaptive method of lines for CCN activation**

S. Arabas and  
H. Pawlowska

[Title Page](#)

[Abstract](#)    [Introduction](#)

[Conclusions](#)    [References](#)

[Tables](#)    [Figures](#)

[⏪](#)    [⏩](#)

[◀](#)    [▶](#)

[Back](#)    [Close](#)

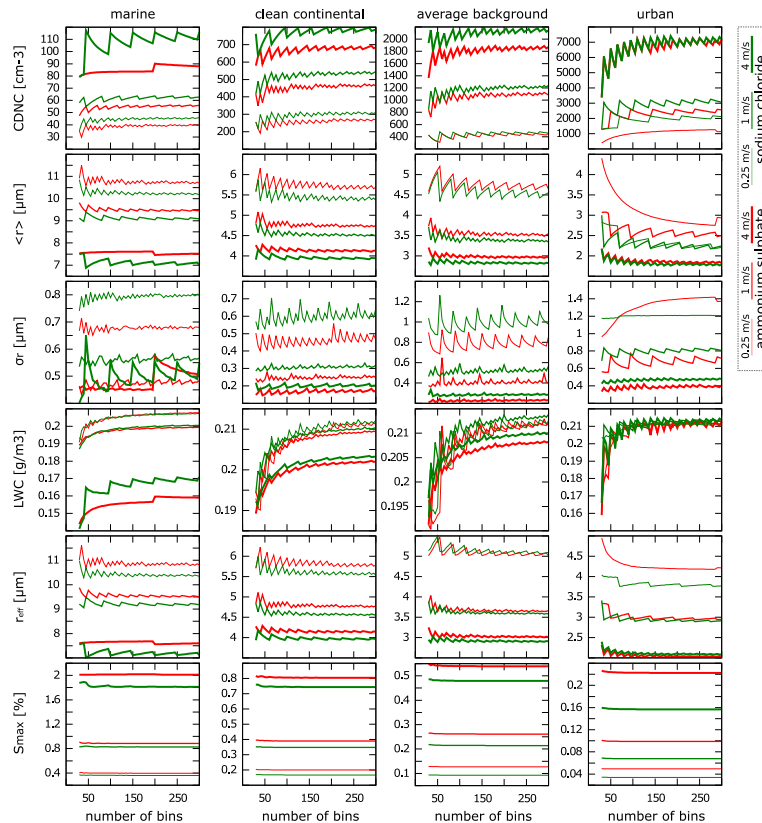
[Full Screen / Esc](#)

[Printer-friendly Version](#)

[Interactive Discussion](#)







**Fig. 4.** A summary of results obtained without adaptivity in the 1296 model runs discussed in Sect. 3.2 (see text for details) plotted as a function of the number of bins. The lines are drawn by connecting points every 5 bins. The width and colour of a line correspond to the vertical velocity and solute, respectively (cf. the key in the top-right corner of the figure). Each of the four columns of plots corresponds to a different initial aerosol size spectrum (i.e. marine, clean continental, average background and urban), all plots in a column share the  $x$ -axis. Each of the top five rows of plots corresponds to a droplet spectrum parameter (i.e. CDNC,  $\langle r \rangle$ ,  $\sigma_r$ , LWC and  $r_{\text{eff}}$ ). The bottom row of plots corresponds to the maximum supersaturation. The ranges of the  $y$ -axes differ. Figure 5 presents analogous results obtained with adaptivity (with maximum supersaturation plots omitted).

**Adaptive method of lines for CCN activation**

S. Arabas and  
H. Pawlowska

Title Page

Abstract Introduction

Conclusions References

Tables Figures

◀ ▶

◀ ▶

Back Close

Full Screen / Esc

Printer-friendly Version

Interactive Discussion



Adaptive method of  
lines for CCN  
activationS. Arabas and  
H. Pawlowska

Title Page

Abstract

Introduction

Conclusions

References

Tables

Figures



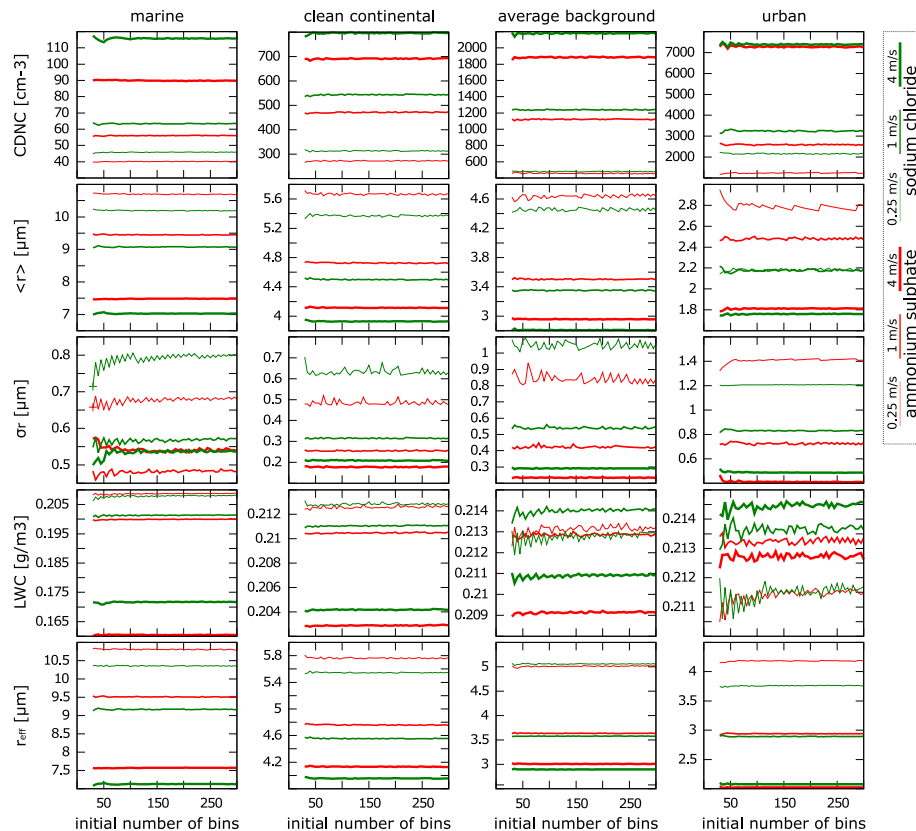
Back

Close

Full Screen / Esc

Printer-friendly Version

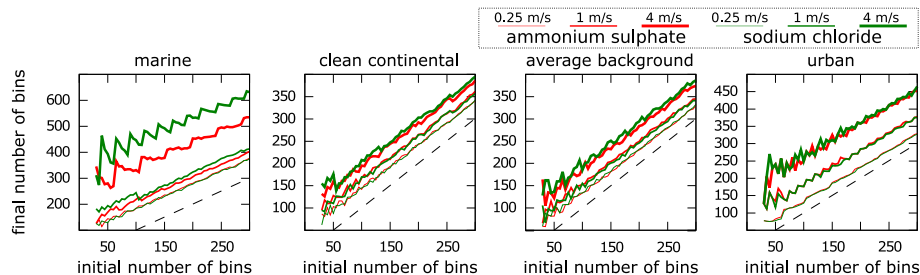
Interactive Discussion



**Fig. 5.** A summary of results obtained with adaptivity in the 1296 model runs discussed in Sect. 3.3 (see text for details). Figure 4 presents analogous results obtained without adaptivity (see caption for explanation of the plot elements).

## Adaptive method of lines for CCN activation

S. Arabas and  
H. Pawlowska



**Fig. 6.** Final number of bins plotted as a function of the initial number of bins for the model runs with adaptivity presented in Fig. 5 and discussed in Sect. 3.3. Dashed lines in the plot are 1 : 1 lines representing cases without adaptivity. Consult the caption of Fig. 4 for explanation of the plot elements.

Title Page

Abstract

Introduction

Conclusions

References

Tables

Figures

⏪

⏩

◀

▶

Back

Close

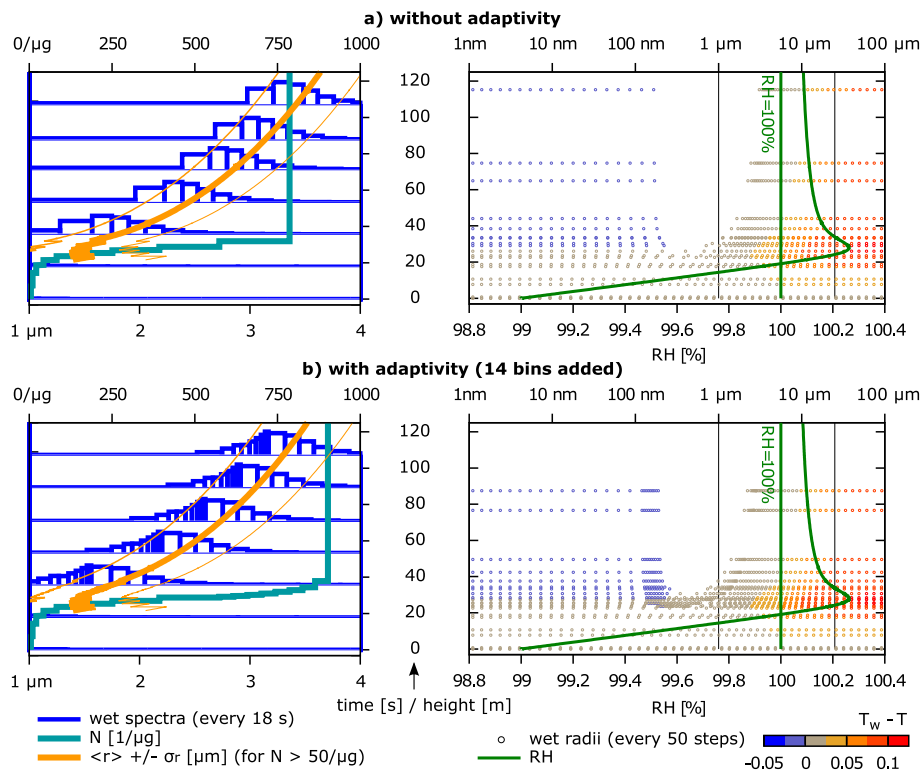
Full Screen / Esc

Printer-friendly Version

Interactive Discussion

Adaptive method of lines for CCN activation

S. Arabas and H. Pawlowska



**Fig. 7.** A comparison of aerosol spectra evolution as calculated in two model runs with adaptivity toggled off (a) and on (b). See captions of Figs. 1–3 for description of the plot elements. Figure discussed in Sect. 3.3.

Title Page

Abstract

Introduction

Conclusions

References

Tables

Figures

⏪

⏩

◀

▶

Back

Close

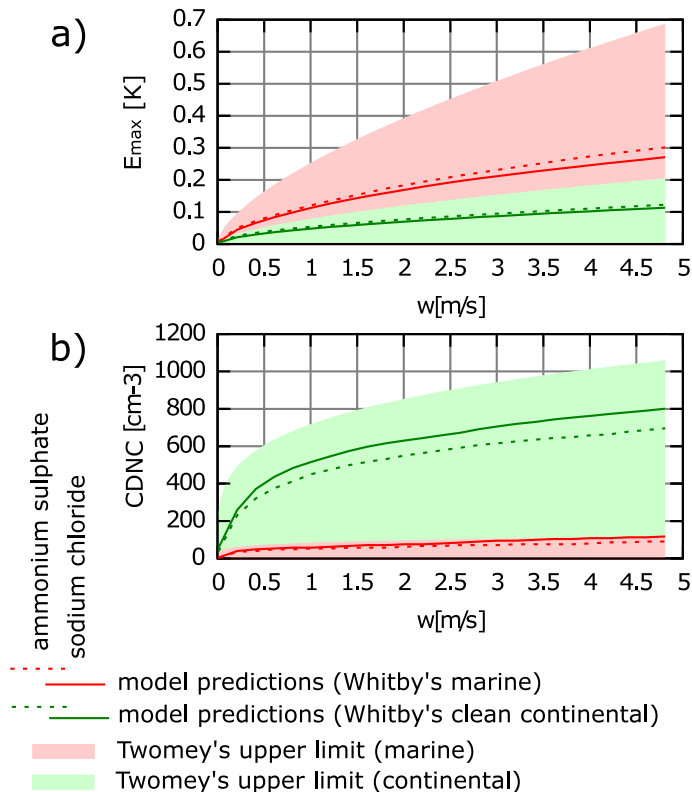
Full Screen / Esc

Printer-friendly Version

Interactive Discussion



## Adaptive method of lines for CCN activation

S. Arabas and  
H. Pawlowska

**Fig. 8.** Comparison of model-predicted drop concentrations (solid and dashed lines in plot **b**) and maximum dew-point elevations (solid and dashed lines in plot **a**), for different updraft velocities, with the Twomey's analytical upper-bound solutions (colour-filled areas). The upper-bound concentrations (colour-filled areas in plot **b**) are evaluated using the upper-bound dew-point elevations as defined by Eq. (27). The lines denoting model predictions are drawn by connecting points every 0.2 m/s. See Sect. 3.4 of the text for discussion of the figure.

[Title Page](#)[Abstract](#)[Introduction](#)[Conclusions](#)[References](#)[Tables](#)[Figures](#)[⏪](#)[⏩](#)[◀](#)[▶](#)[Back](#)[Close](#)[Full Screen / Esc](#)[Printer-friendly Version](#)[Interactive Discussion](#)