

Supplement of Geosci. Model Dev., 8, 2139–2151, 2015
<http://www.geosci-model-dev.net/8/2139/2015/>
doi:10.5194/gmd-8-2139-2015-supplement
© Author(s) 2015. CC Attribution 3.0 License.



Supplement of

Representing icebergs in the iLOVECLIM model (version 1.0) – a sensitivity study

M. Bügelmayer et al.

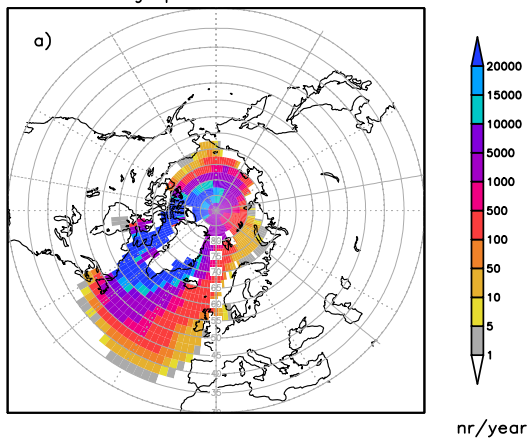
Correspondence to: M. Bügelmayer (m.bugelmayer@vu.nl)

The copyright of individual parts of the supplement might differ from the CC-BY 3.0 licence.

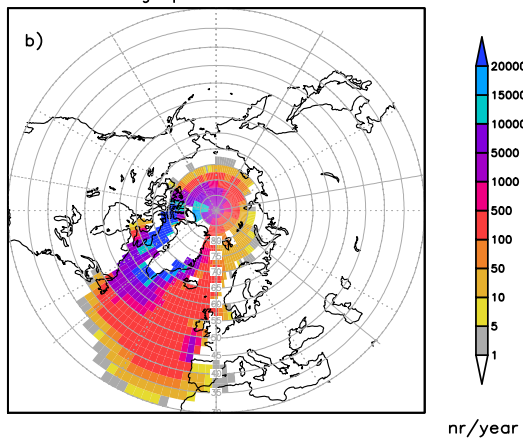
Supplementary Information:

Figure 1: Number of icebergs passing by a grid cell per year (icebergs that are grounded are only counted once); first row: atmospheric forcing only (CTRL-, BIG-, SMALL-ATM); second row: oceanic forcing only (CTRL-, BIG-, SMALL-OCE), third row: the default set-up (icebergs are moved by both, atmospheric and oceanic forcing; CTRL-, BIG-, SMALL-COM)

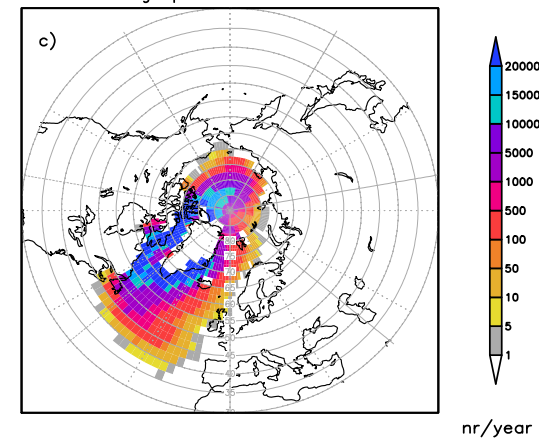
Icebergs per Year CTRL-COM



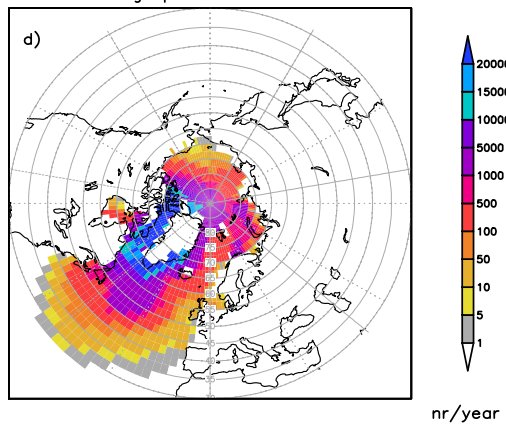
Icebergs per Year BIG-COM



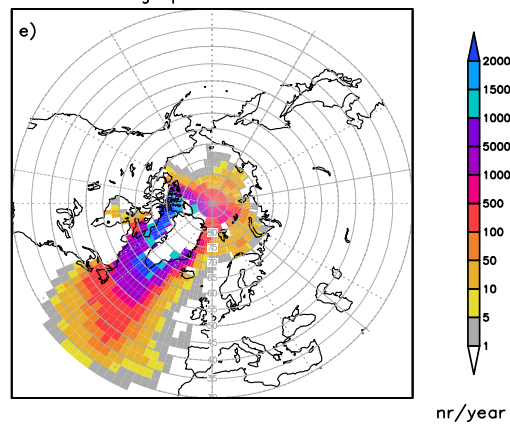
Icebergs per Year SMALL-COM



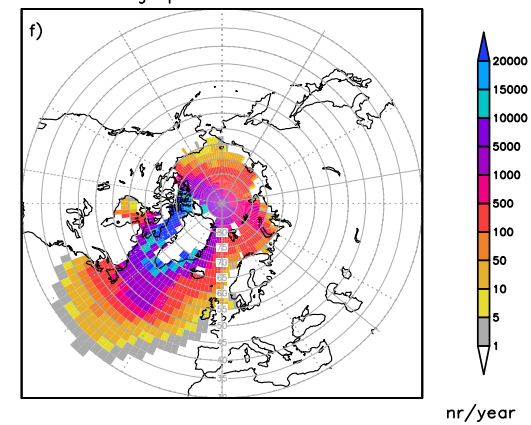
Icebergs per Year CTRL-ATM



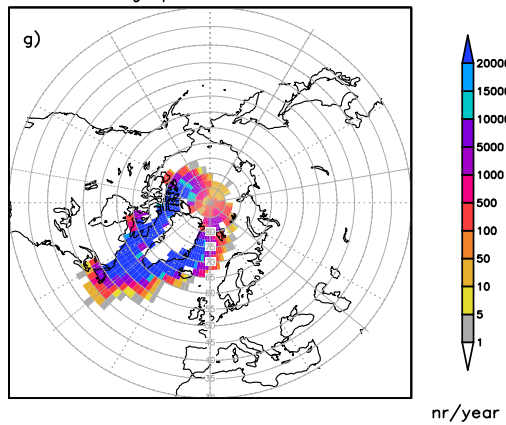
Icebergs per Year BIG-ATM



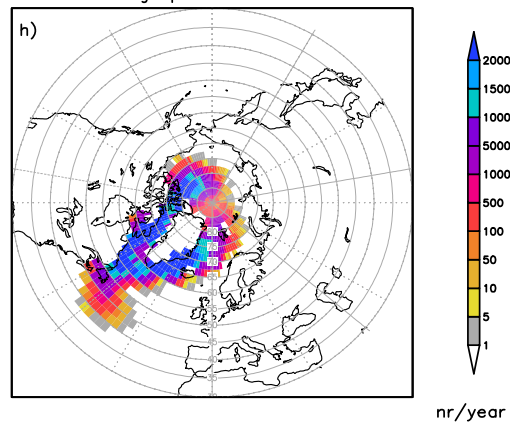
Icebergs per Year SMALL-ATM



Icebergs per Year CTRL-OCE



Icebergs per Year BIG-OCE



Icebergs per Year SMALL-OCE

