

Supplement of Geosci. Model Dev., 7, 2817–2829, 2014  
<http://www.geosci-model-dev.net/7/2817/2014/>  
doi:10.5194/gmd-7-2817-2014-supplement  
© Author(s) 2014. CC Attribution 3.0 License.



*Supplement of*

## **Uncertainty in Lagrangian pollutant transport simulations due to meteorological uncertainty from a mesoscale WRF ensemble**

**W. M. Angevine et al.**

*Correspondence to:* W. M. Angevine ([wayne.m.angevine@noaa.gov](mailto:wayne.m.angevine@noaa.gov))

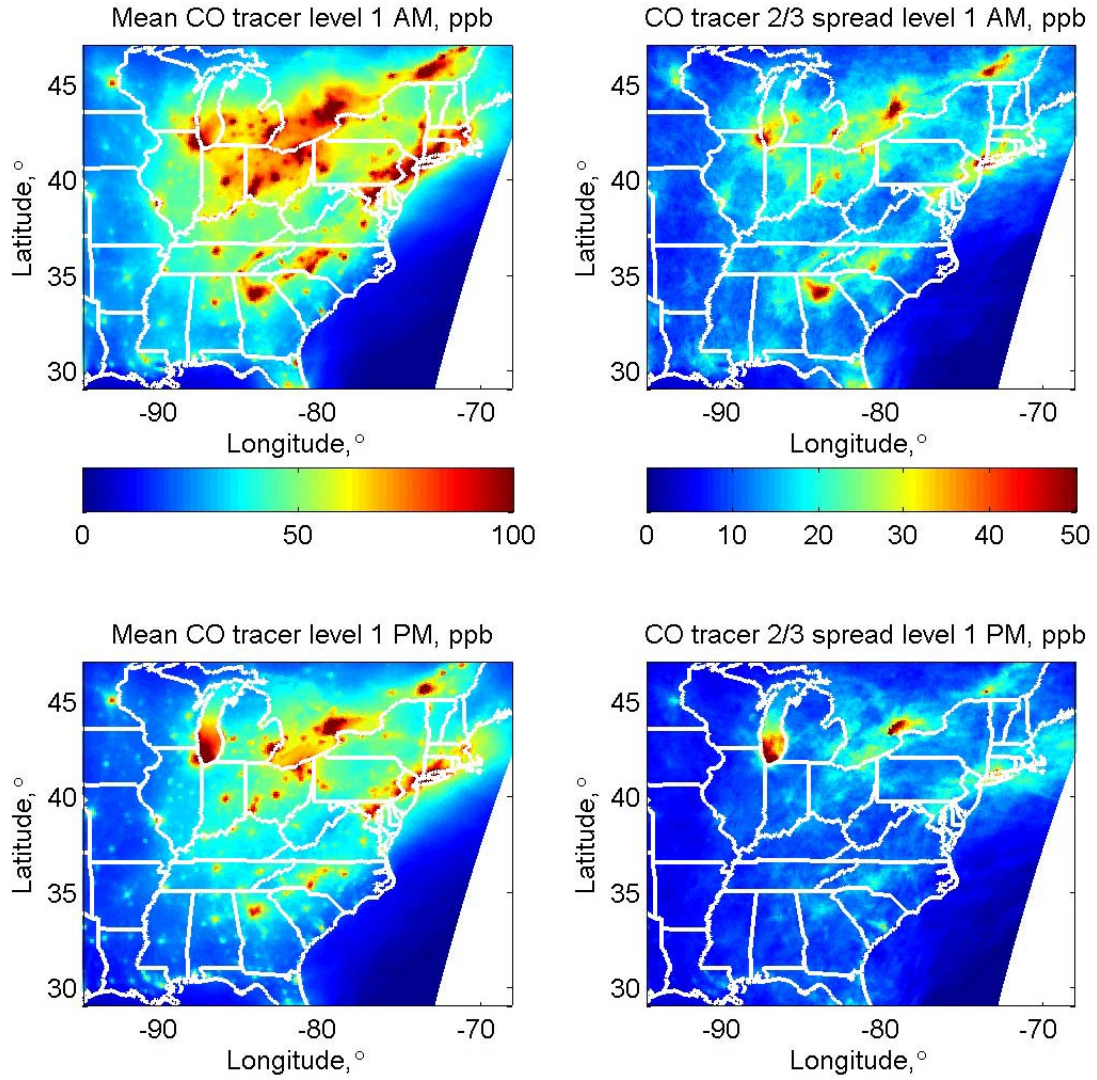


Figure S01: Mean tracer mixing ratio (left) and spread (right) at level 1 (0-100 m AGL). The averages are taken over all 49 days and hours 0400-0600 LST (AM, top) and 1300-1500 LST (PM, bottom). Compare to figure 9 which shows the normalized spreads at this level.

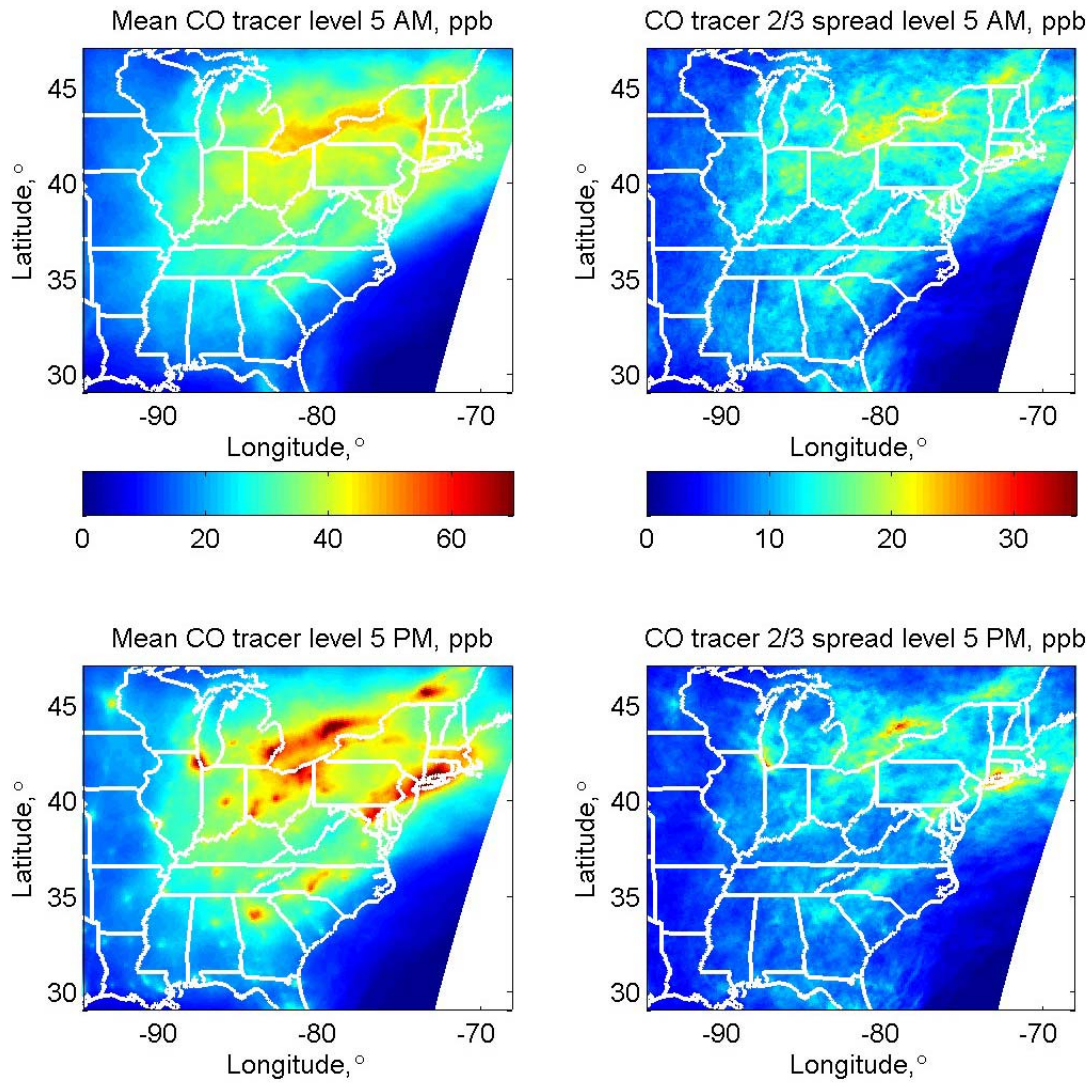


Figure S02: Mean tracer mixing ratio (left) and spread (right) at level 5 (400-500 m AGL). The averages are taken over all 49 days and hours 0400-0600 LST (AM, top) and 1300-1500 LST (PM, bottom). Compare to figure 10 which shows the normalized spreads at this level.

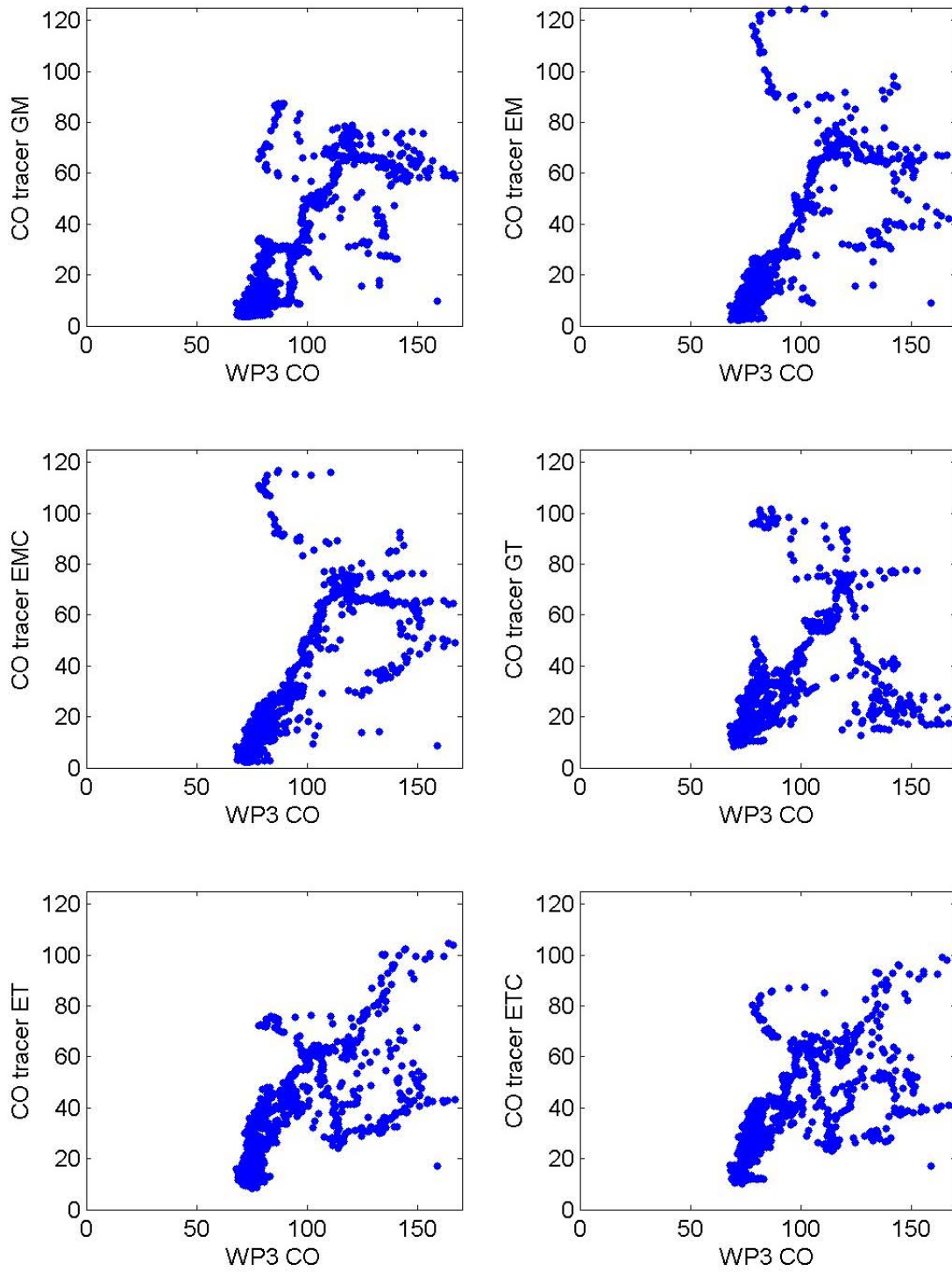


Figure S03: Scatter plots of CO tracer from each FLEXPART-WRF run (as labeled) vs. CO measured on all flights of the WP3 aircraft. Each plot contains 1116 samples.