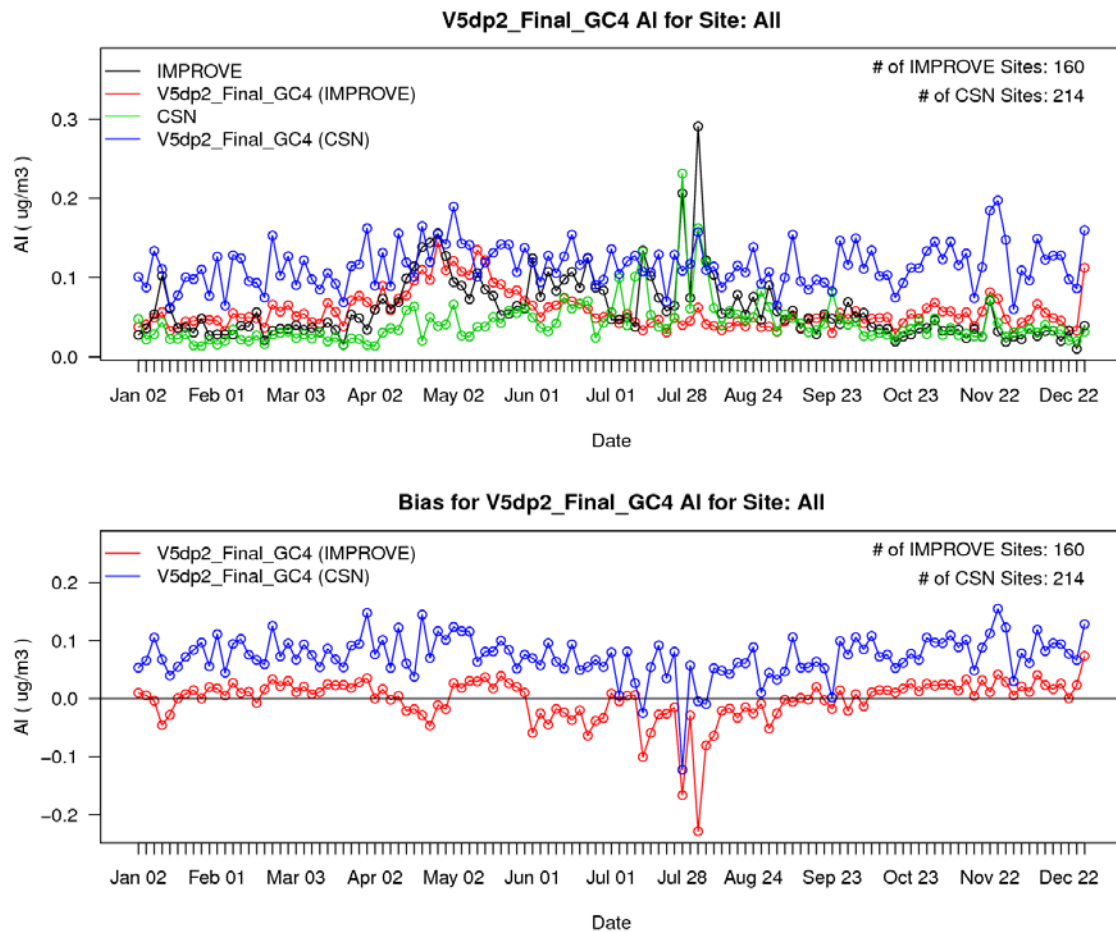


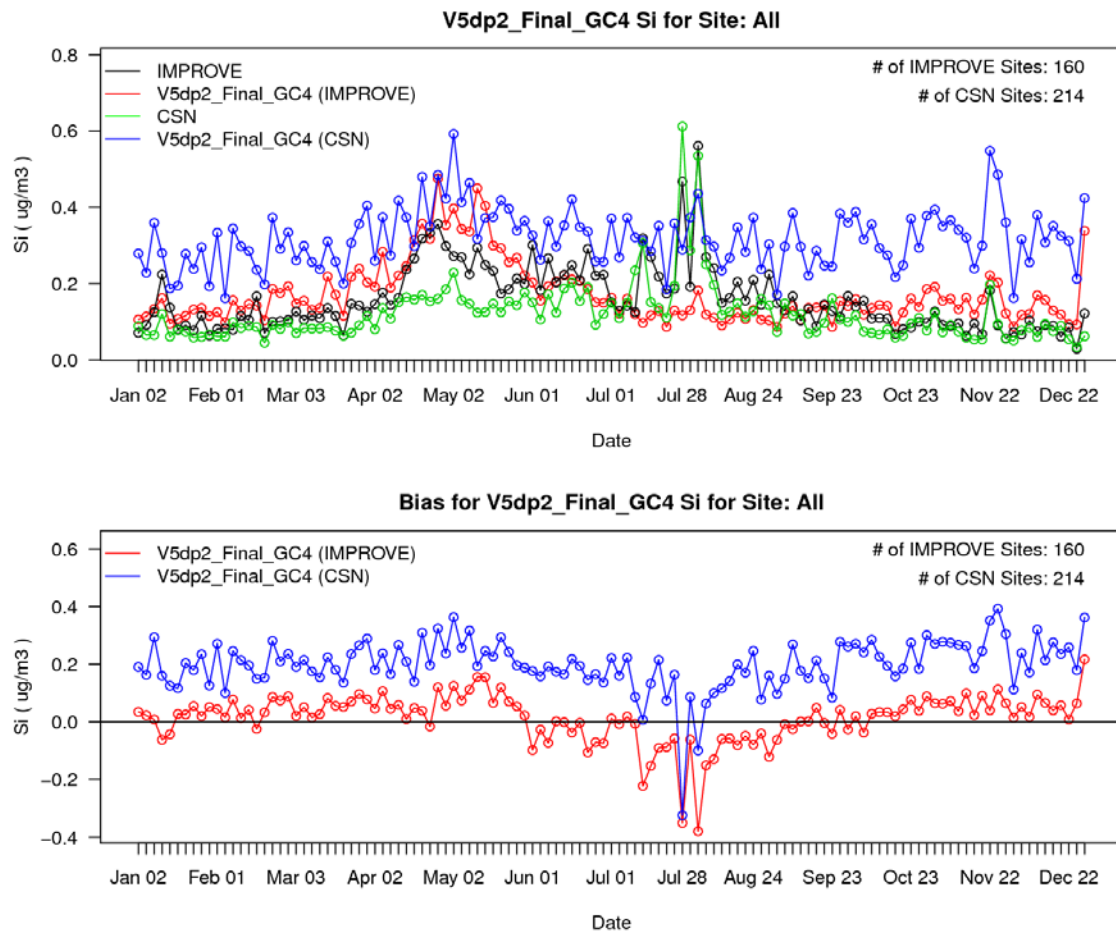
1
2 Figure S1. The top time series plot shows the IMPROVE fine particulate Fe observations
3 (black) versus CMAQ estimated Fe (red) and CSN Fe observations (green) versus CMAQ
4 estimated Fe (blue) for 2006 for all CONUS sites. The bottom time series plot shows the
5 CMAQ bias for Fe at the IMPROVE network sites (blue) and CSN sites (red). Both plots are in
6 units of $\mu\text{g}/\text{m}^3$.
7



1

2 Figure S2. The top time series plot shows the IMPROVE fine particulate Al observations
 3 (black) versus CMAQ estimated Al (red) and CSN Al observations (green) versus CMAQ
 4 estimated Al (blue) for 2006 for all CONUS sites. The bottom time series plot shows the
 5 CMAQ bias for Al at the IMPROVE network sites (blue) and CSN sites (red). Both plots are in
 6 units of μgm^{-3} .

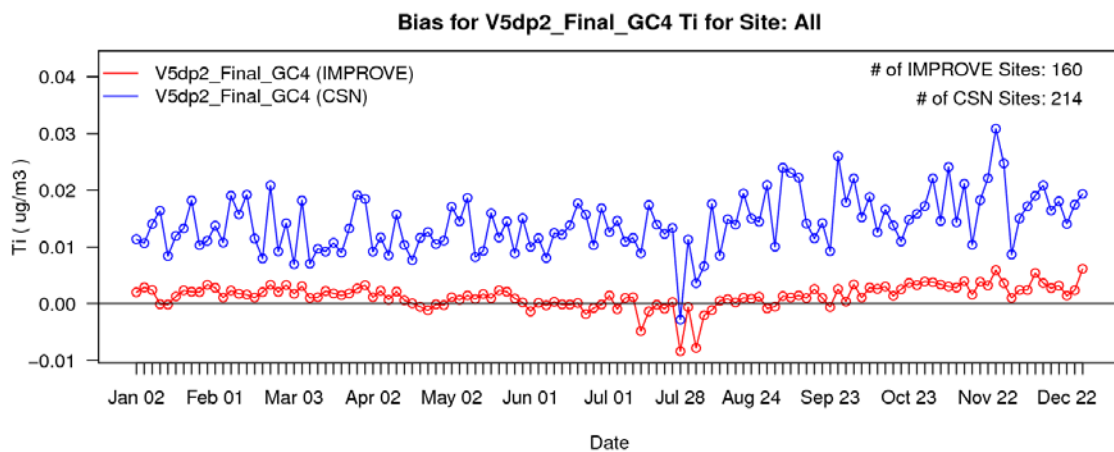
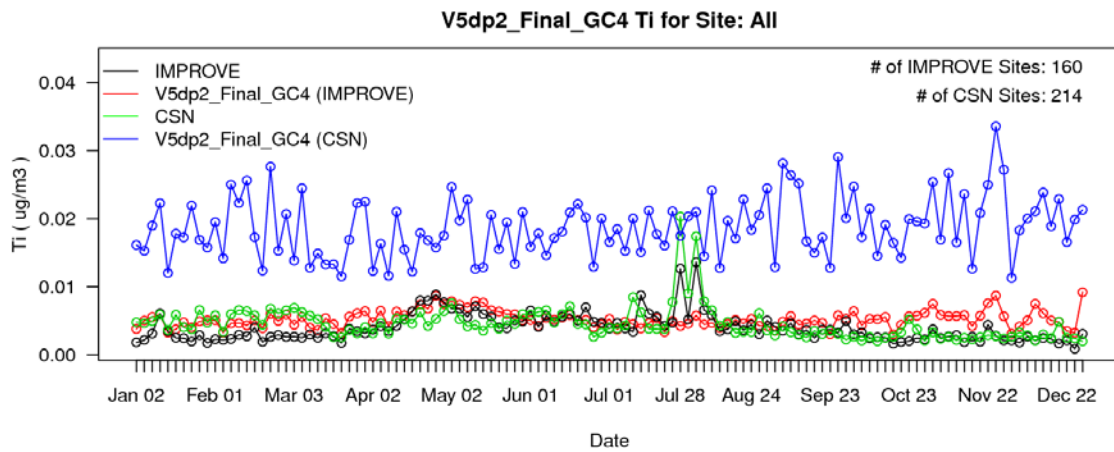
7



1

2 Figure S3. The top time series plot shows the IMPROVE fine particulate Si observations
 3 (black) versus CMAQ estimated Si (red) and CSN Si observations (green) versus CMAQ
 4 estimated Si (blue) for 2006 for all CONUS sites. The bottom time series plot shows the
 5 CMAQ bias for Si at the IMPROVE network sites (blue) and CSN sites (red). Both plots are in
 6 units of μgm^{-3} .

7



1

2 Figure S4. The top time series plot shows the IMPROVE fine particulate Ti observations

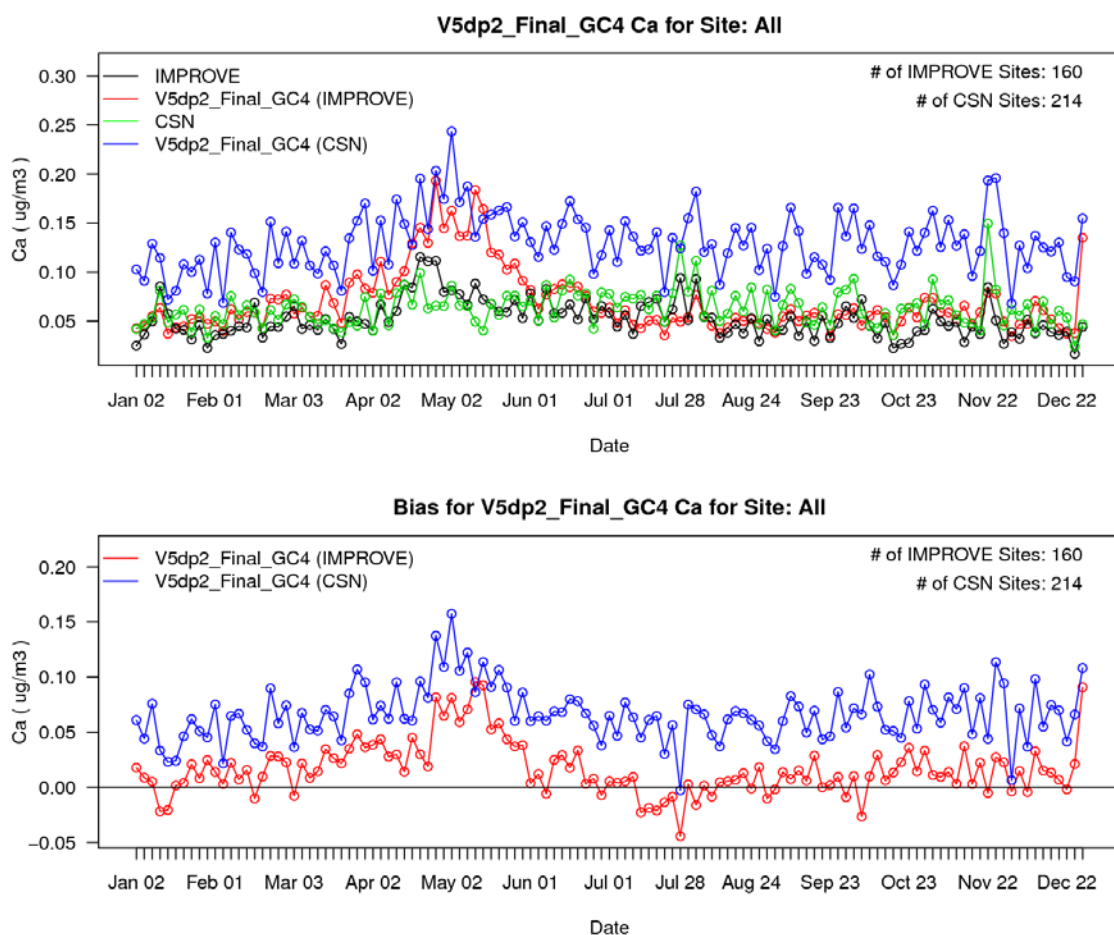
3 (black) versus CMAQ estimated Ti (red) and CSN Ti observations (green) versus CMAQ

4 estimated Ti (blue) for 2006 for all CONUS sites. The bottom time series plot shows the

5 CMAQ bias for Ti at the IMPROVE network sites (blue) and CSN sites (red). Both plots are in

6 units of μgm^{-3} .

7



1

2 Figure S5. The top time series plot shows the IMPROVE fine particulate Ca observations

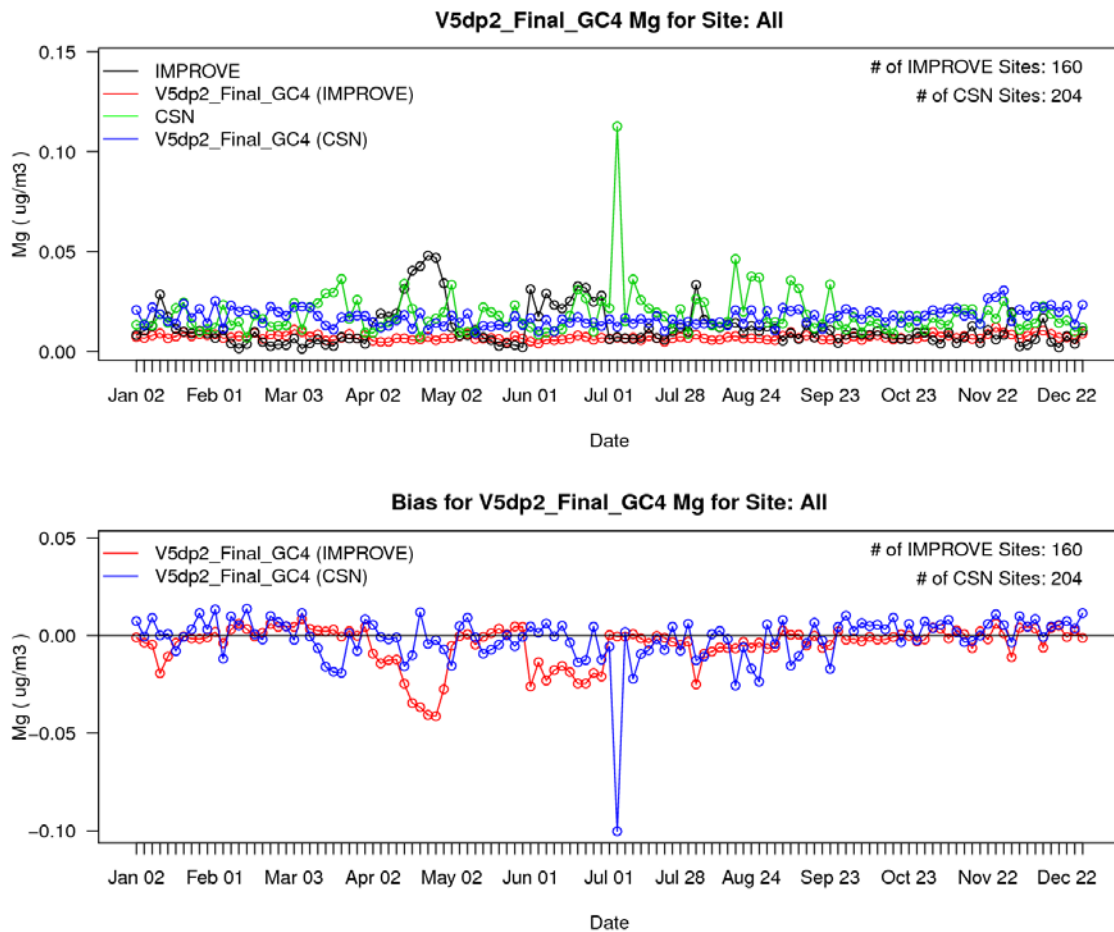
3 (black) versus CMAQ estimated Ca (red) and CSN Ca observations (green) versus CMAQ

4 estimated Ca (blue) for 2006 for all CONUS sites. The bottom time series plot shows the

5 CMAQ bias for Ca at the IMPROVE network sites (blue) and CSN sites (red). Both plots are in

6 units of μgm^{-3} .

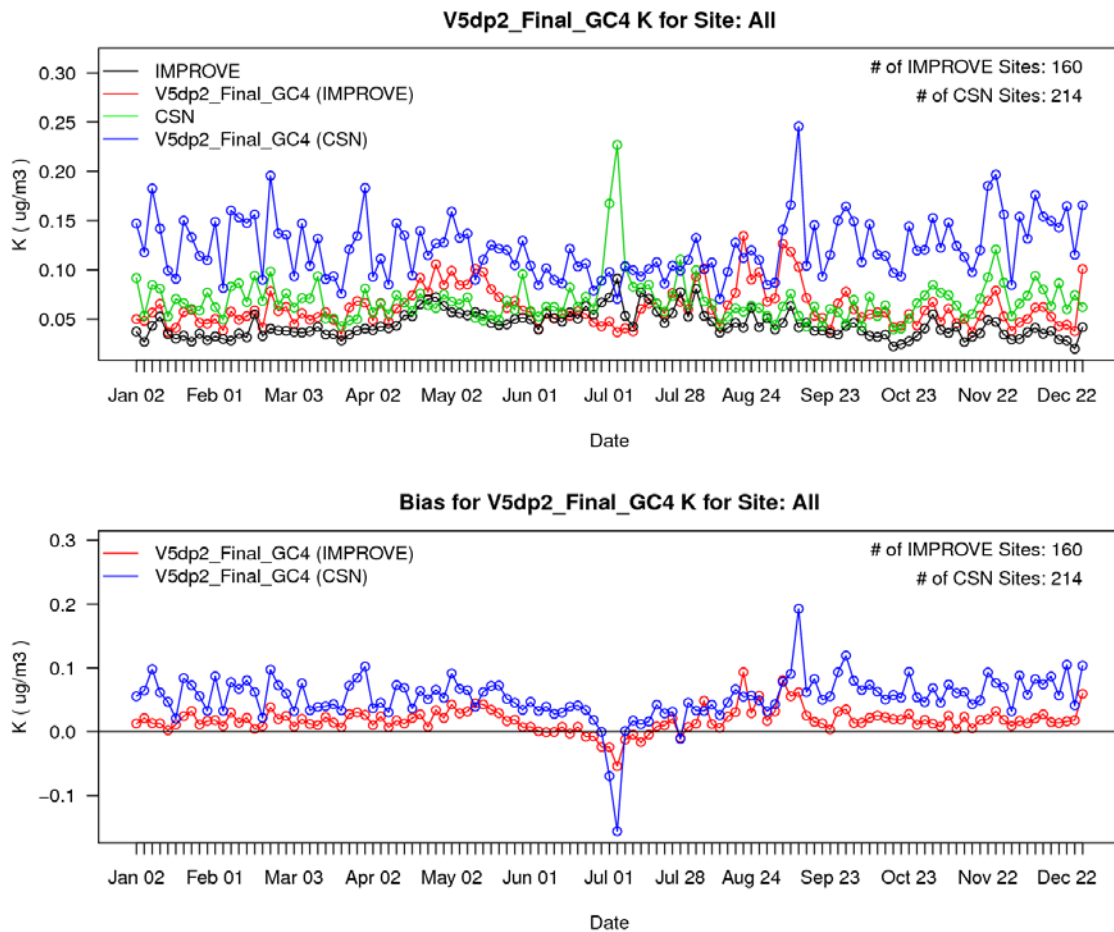
7



1

2 Figure S6. The top time series plot shows the IMPROVE fine particulate Mg observations
 3 (black) versus CMAQ estimated Mg (red) and CSN Mg observations (green) versus CMAQ
 4 estimated Mg (blue) for 2006 for all CONUS sites. The bottom time series plot shows the
 5 CMAQ bias for Mg at the IMPROVE network sites (blue) and CSN sites (red). Both plots are in
 6 units of μgm^{-3} .

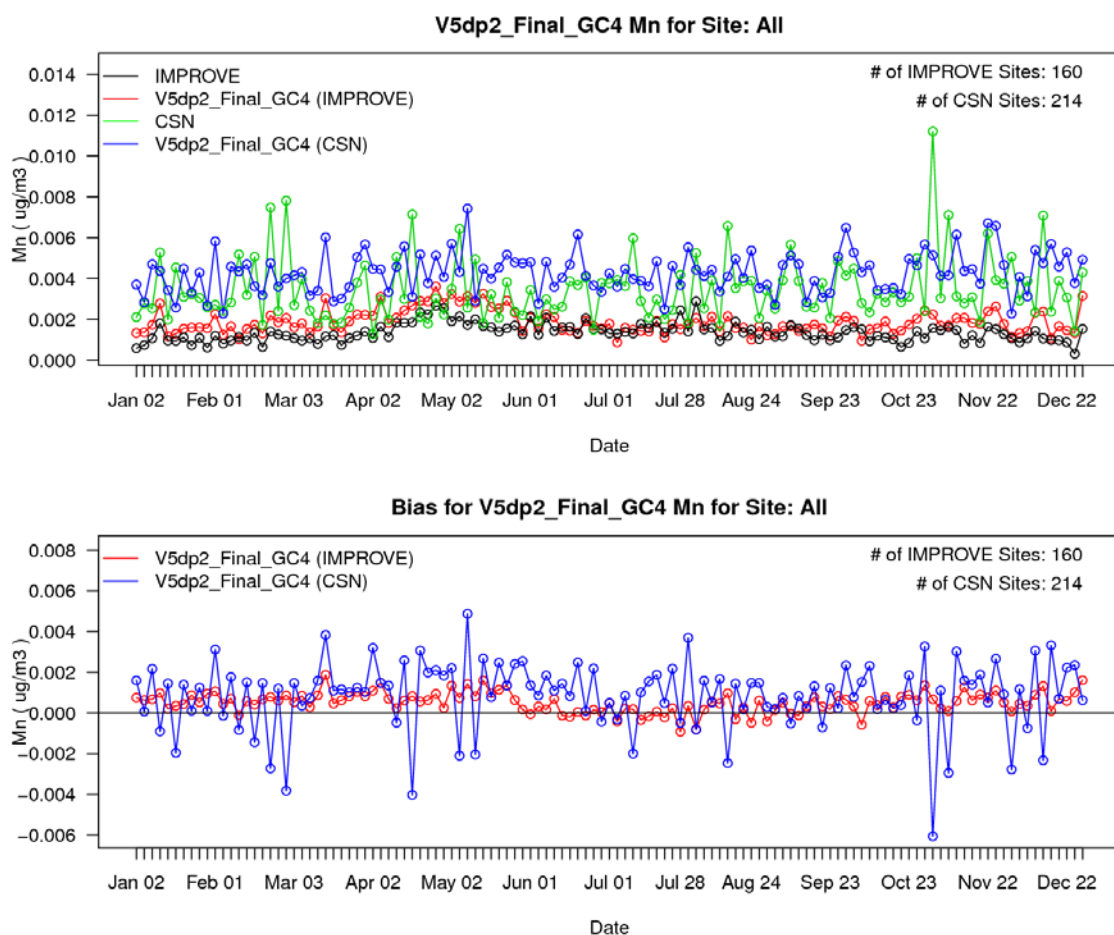
7



1

2 Figure S7. The top time series plot shows the IMPROVE fine particulate K observations
 3 (black) versus CMAQ estimated K (red) and CSN K observations (green) versus CMAQ
 4 estimated K (blue) for 2006 for all CONUS sites. The bottom time series plot shows the
 5 CMAQ bias for K at the IMPROVE network sites (blue) and CSN sites (red). Both plots are in
 6 units of μgm^{-3} .

7



1

2 Figure S8. The top time series plot shows the IMPROVE fine particulate Mn observations

3 (black) versus CMAQ estimated Mn (red) and CSN Mn observations (green) versus CMAQ

4 estimated Mn (blue) for 2006 for all CONUS sites. The bottom time series plot shows the

5 CMAQ bias for Mn at the IMPROVE network sites (blue) and CSN sites (red). Both plots are in

6 units of μgm^{-3} .

7

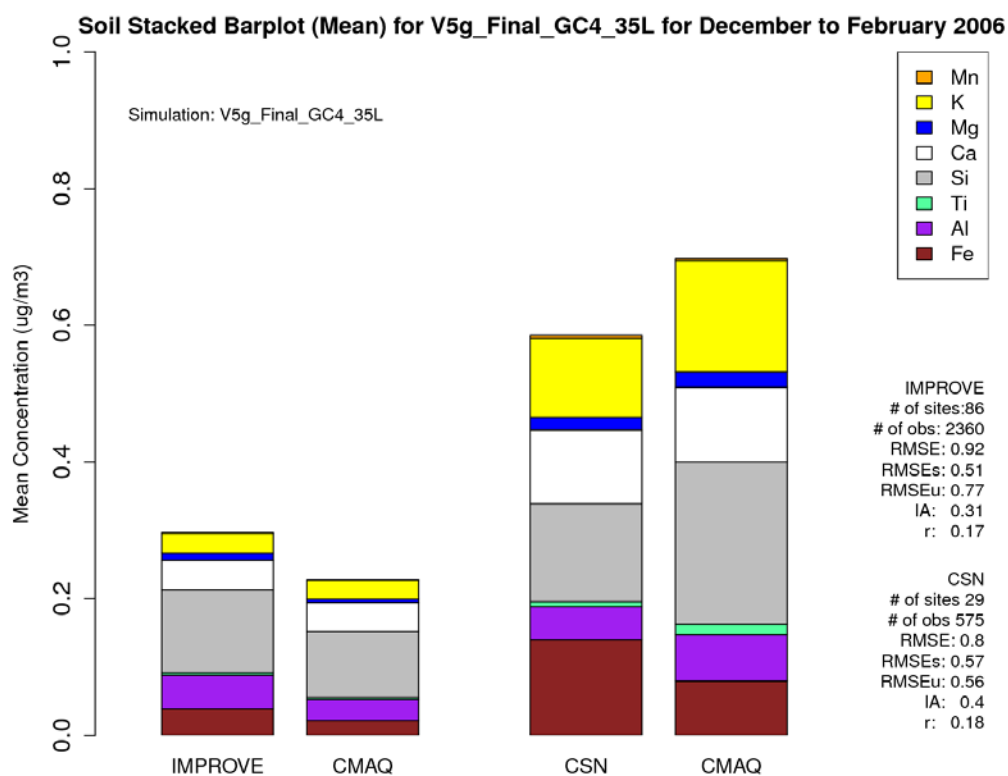
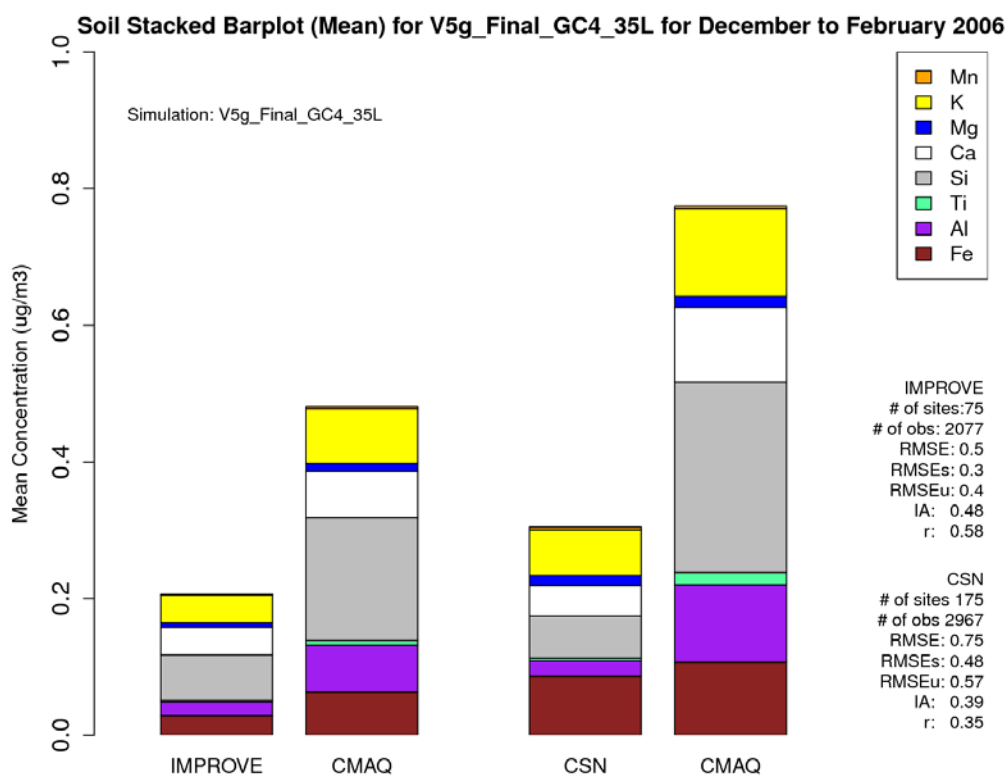
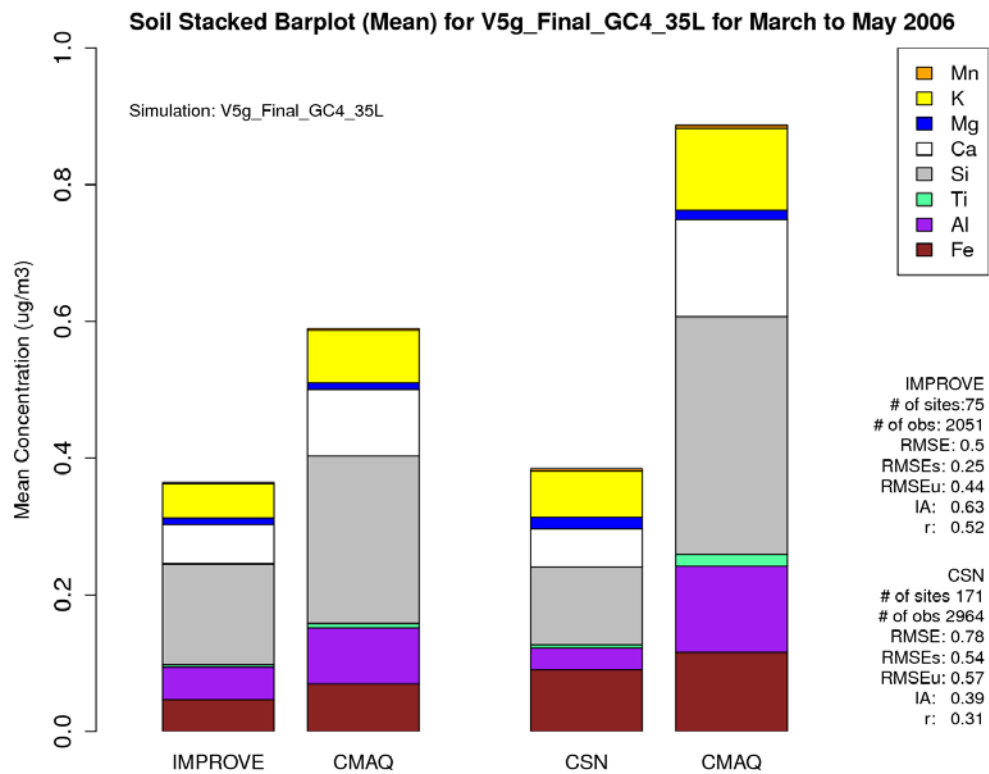
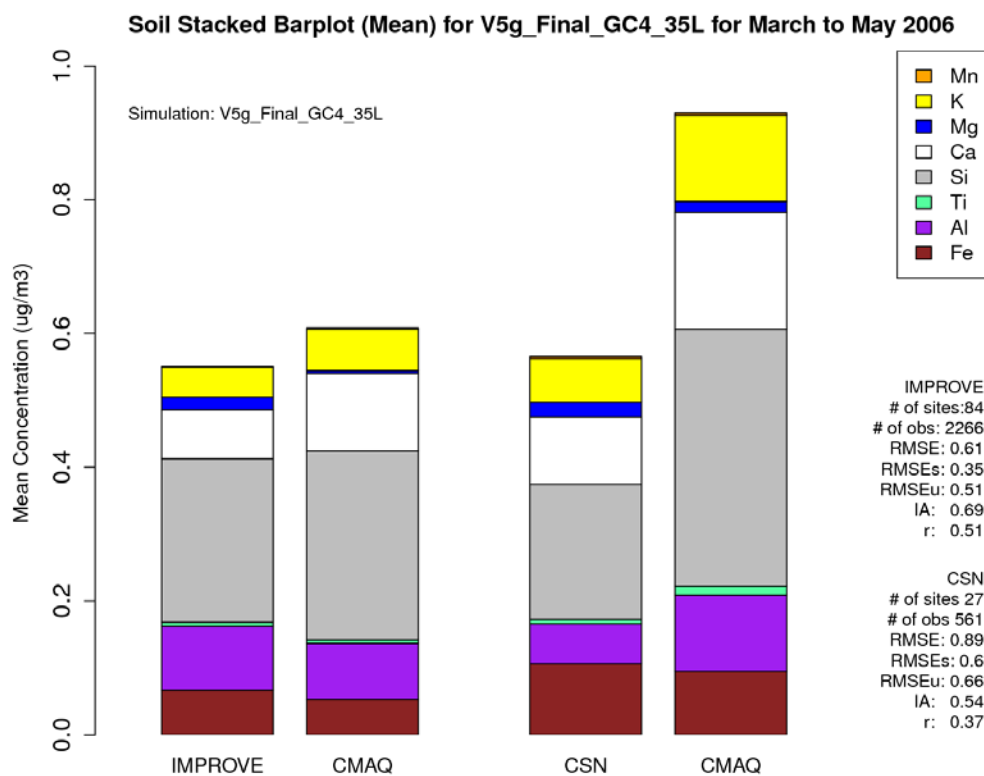


Figure S9. Eastern U.S. (top) and Western U.S. (bottom) trace metal performance for winter.

1



2



3

4 Figure S10. Eastern U.S. (top) and Western U.S. (bottom) trace metal performance for spring.

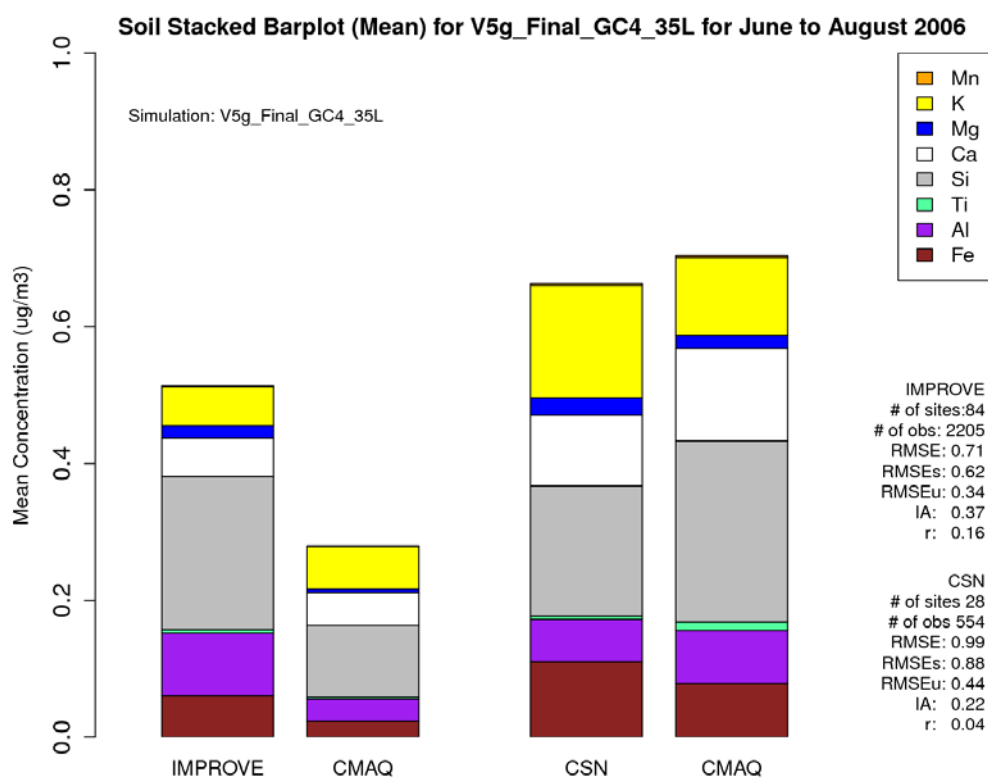
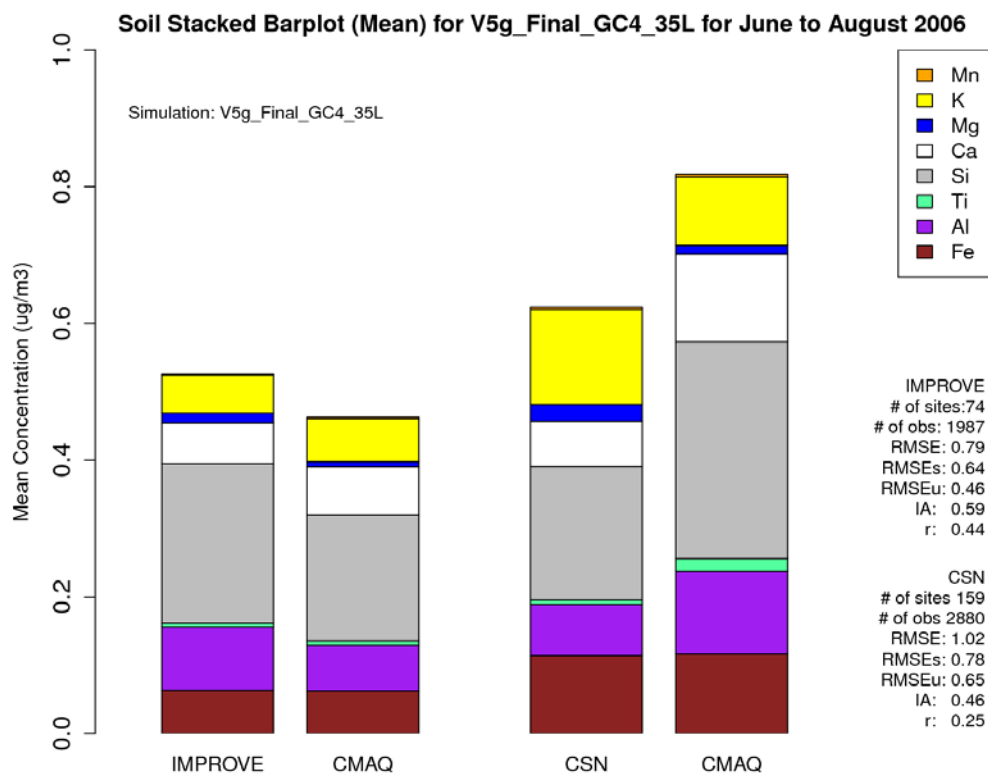


Figure S11. Eastern U.S. (top) and Western U.S. (bottom) trace metal performance for summer.

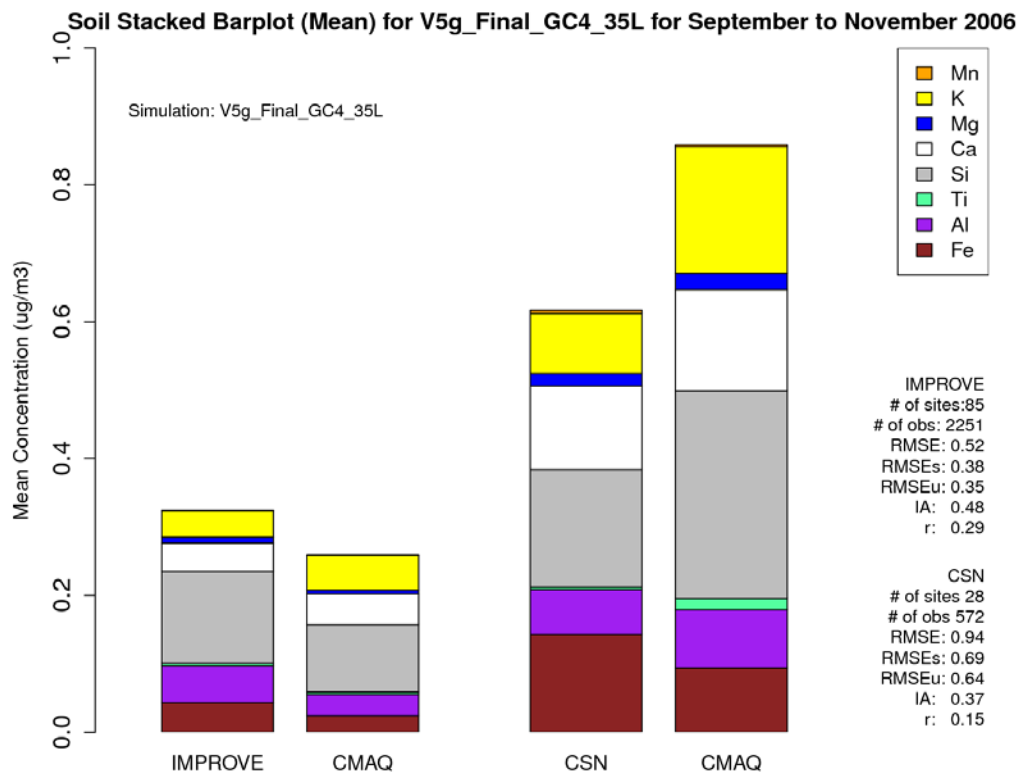
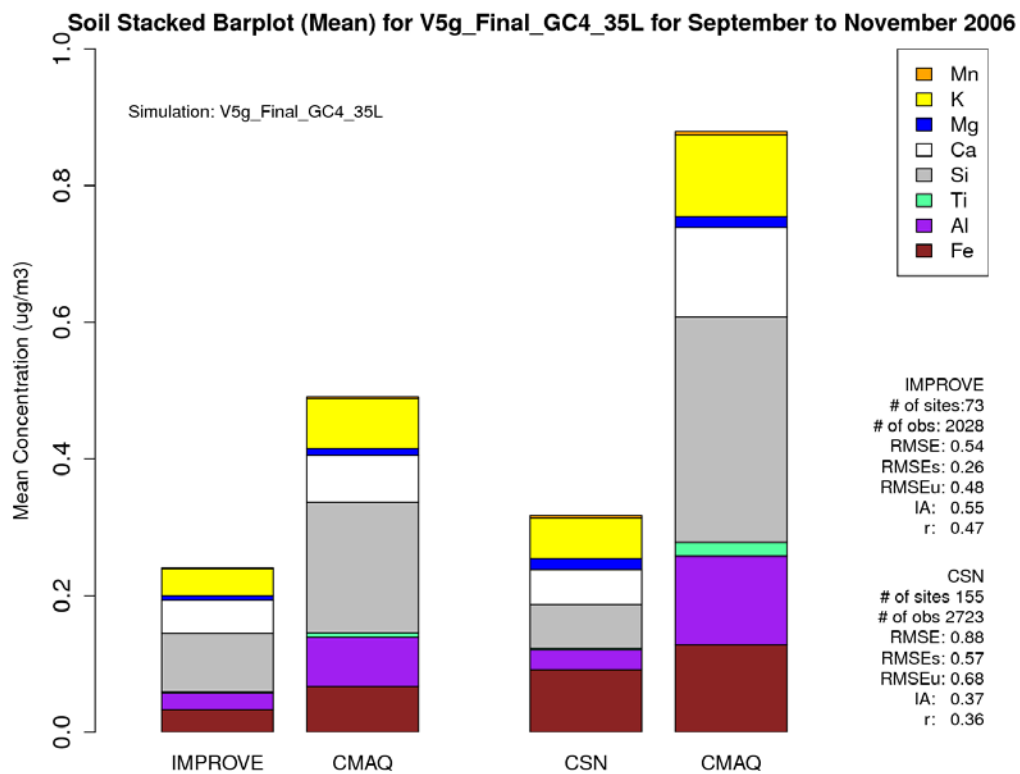
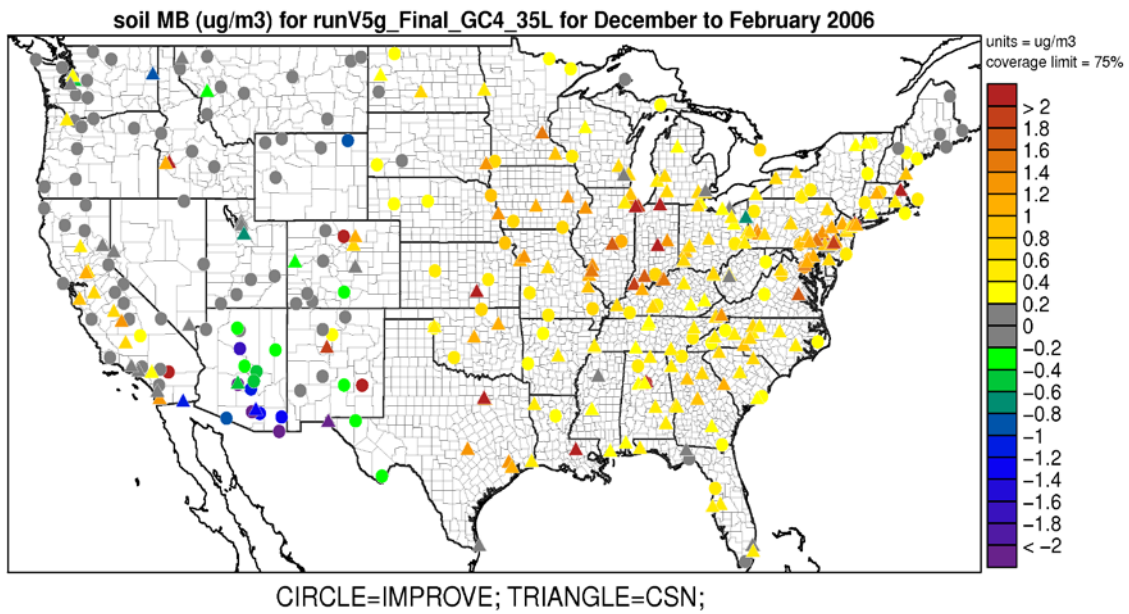
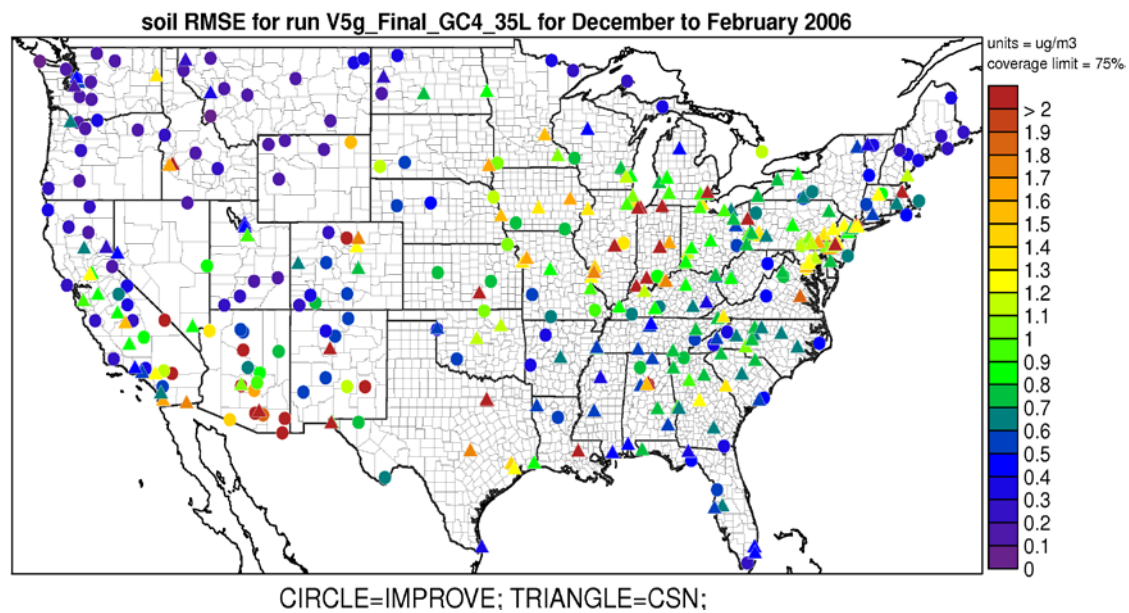


Figure S12. Eastern U.S. (top) and Western U.S. (bottom) trace metal performance for fall.

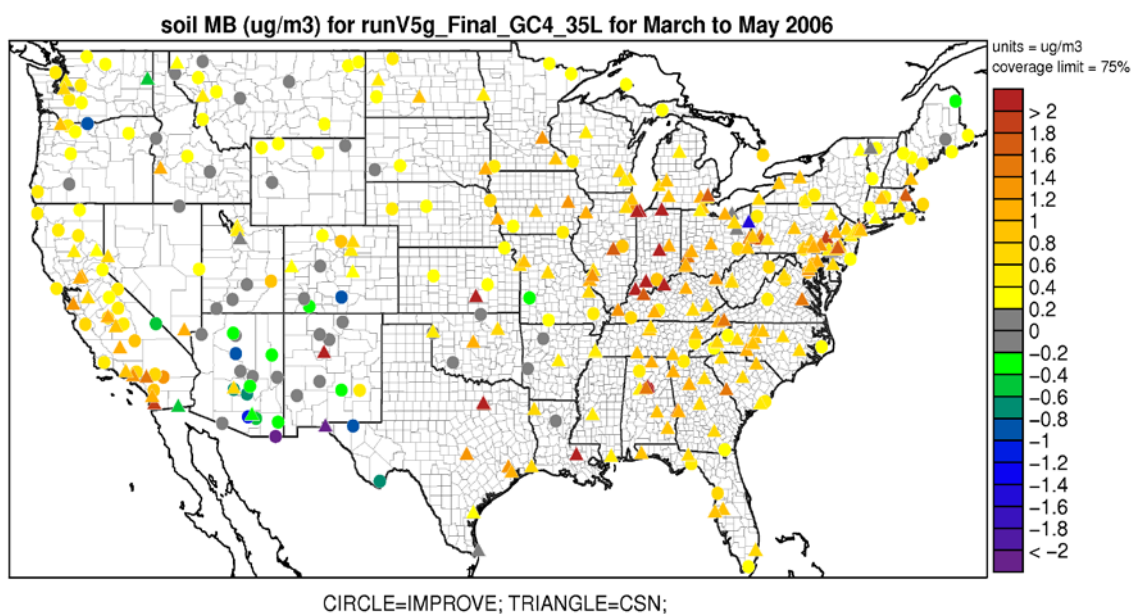


1

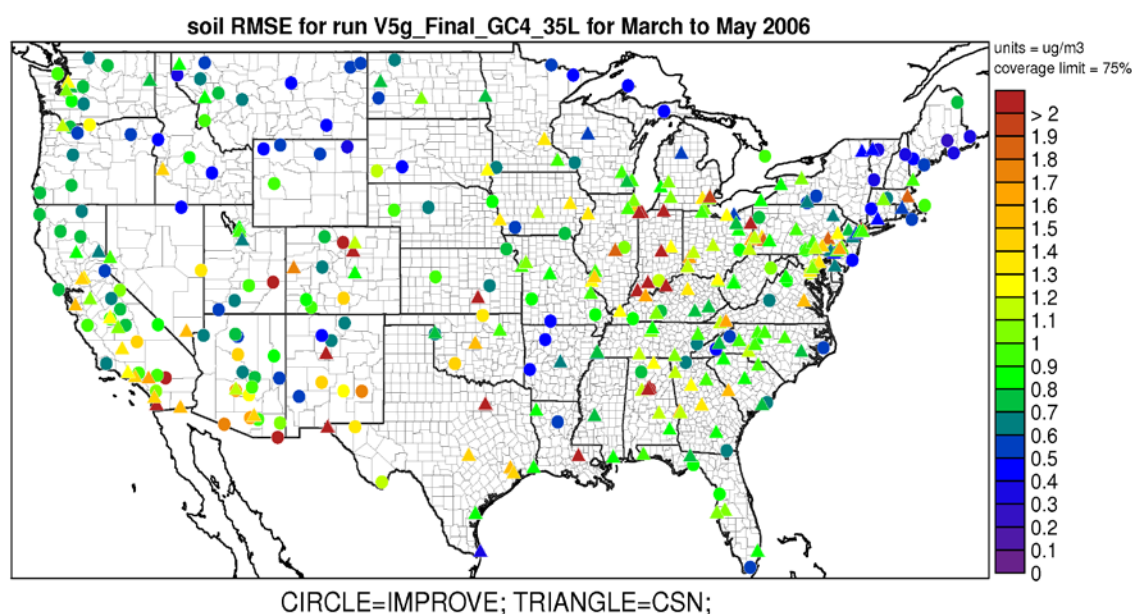


2

3 Figure S13. Soil mean bias (top) and (RMSE) performance for winter.

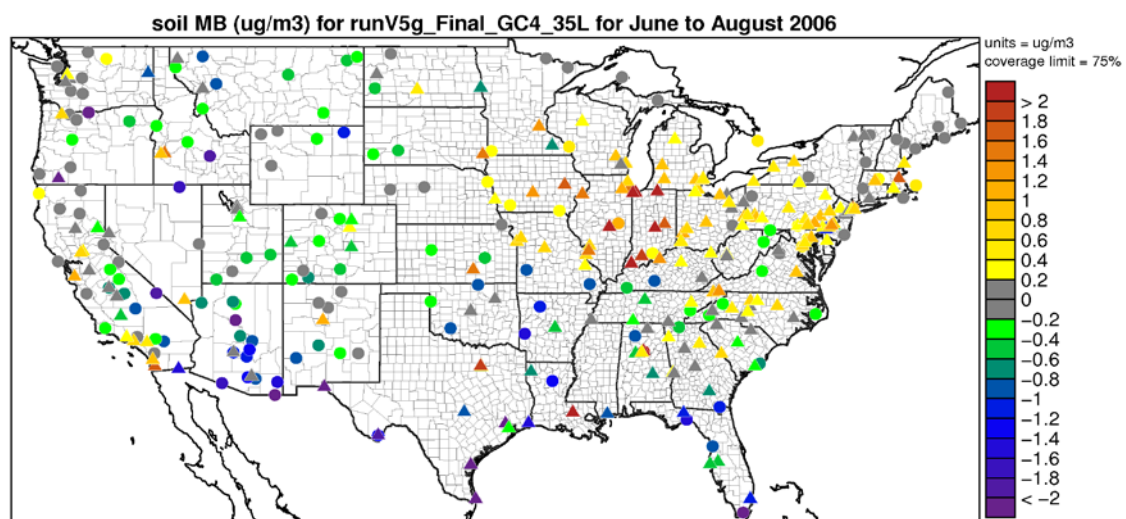


1

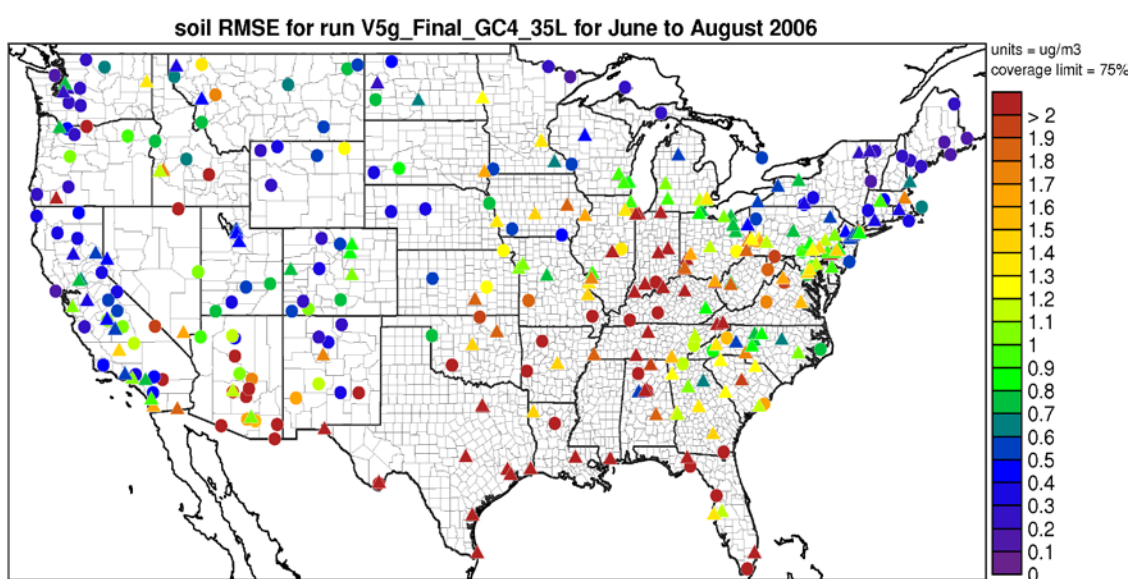


2

3 Figure S14. Eastern U.S. (top) and Western U.S. (bottom) trace metal performance for spring.

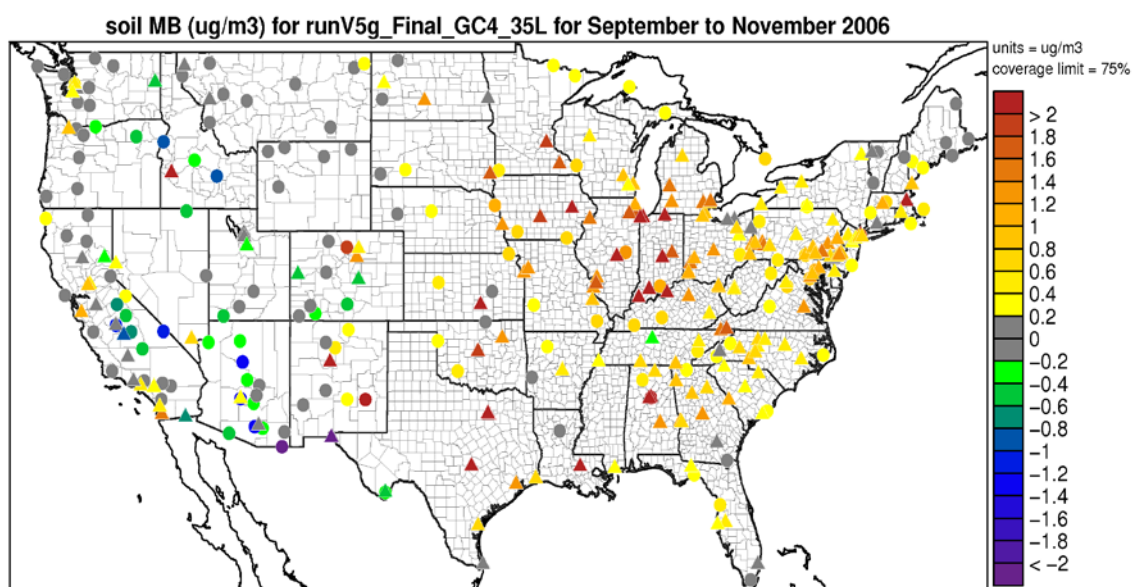


CIRCLE=IMPROVE; TRIANGLE=CSN;

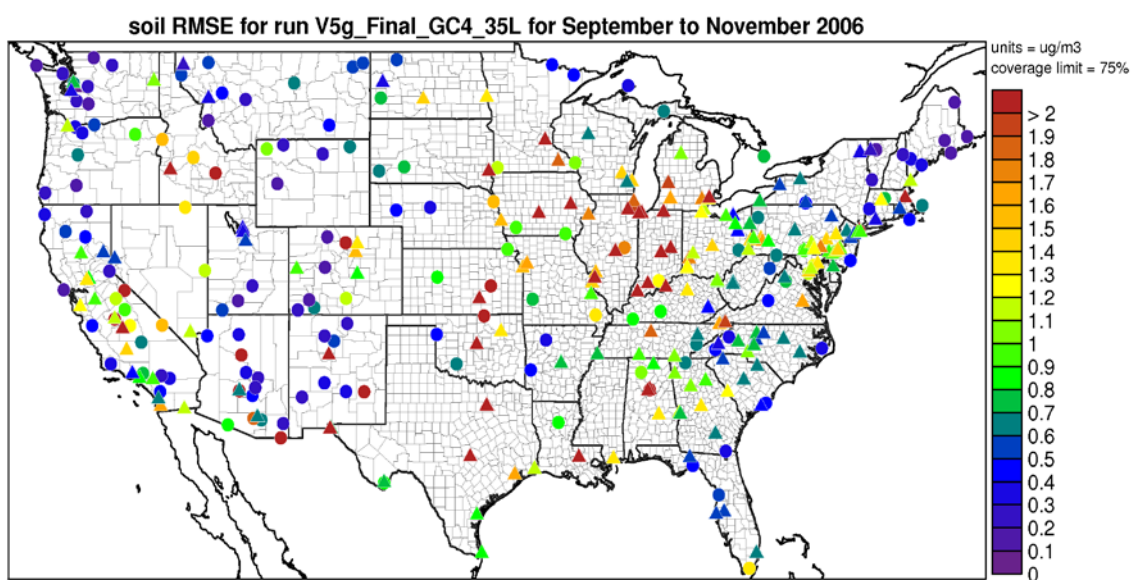


CIRCLE=IMPROVE; TRIANGLE=CSN;

Figure S15. Eastern U.S. (top) and Western U.S. (bottom) trace metal performance for summer.



1 CIRCLE=IMPROVE; TRIANGLE=CSN;



2 CIRCLE=IMPROVE; TRIANGLE=CSN;

3 Figure S16. Eastern U.S. (top) and Western U.S. (bottom) trace metal performance for fall.