

Supplemental Material:

Additional Figures

Part 1: CAABA simulations

A. J. G. Baumgaertner, P. Jöckel,
B. Steil, H. Tost & R. Sander

Correspondance to:
A. J. G. Baumgaertner
Air Chemistry Department
Max Planck Institute for Chemistry
PO Box 3060, 55020 Mainz, Germany
`work@andreas-baumgaertner.net`

This document is part of the electronic supplement of our article “A fast stratospheric chemistry solver: The E4CHEM submodel for the atmospheric chemistry global circulation model EMAC” in Geosci. Model Dev. Disc. (2010), available at: <http://www.geosci-model-dev-discuss.net>

Date: 2009/12/15

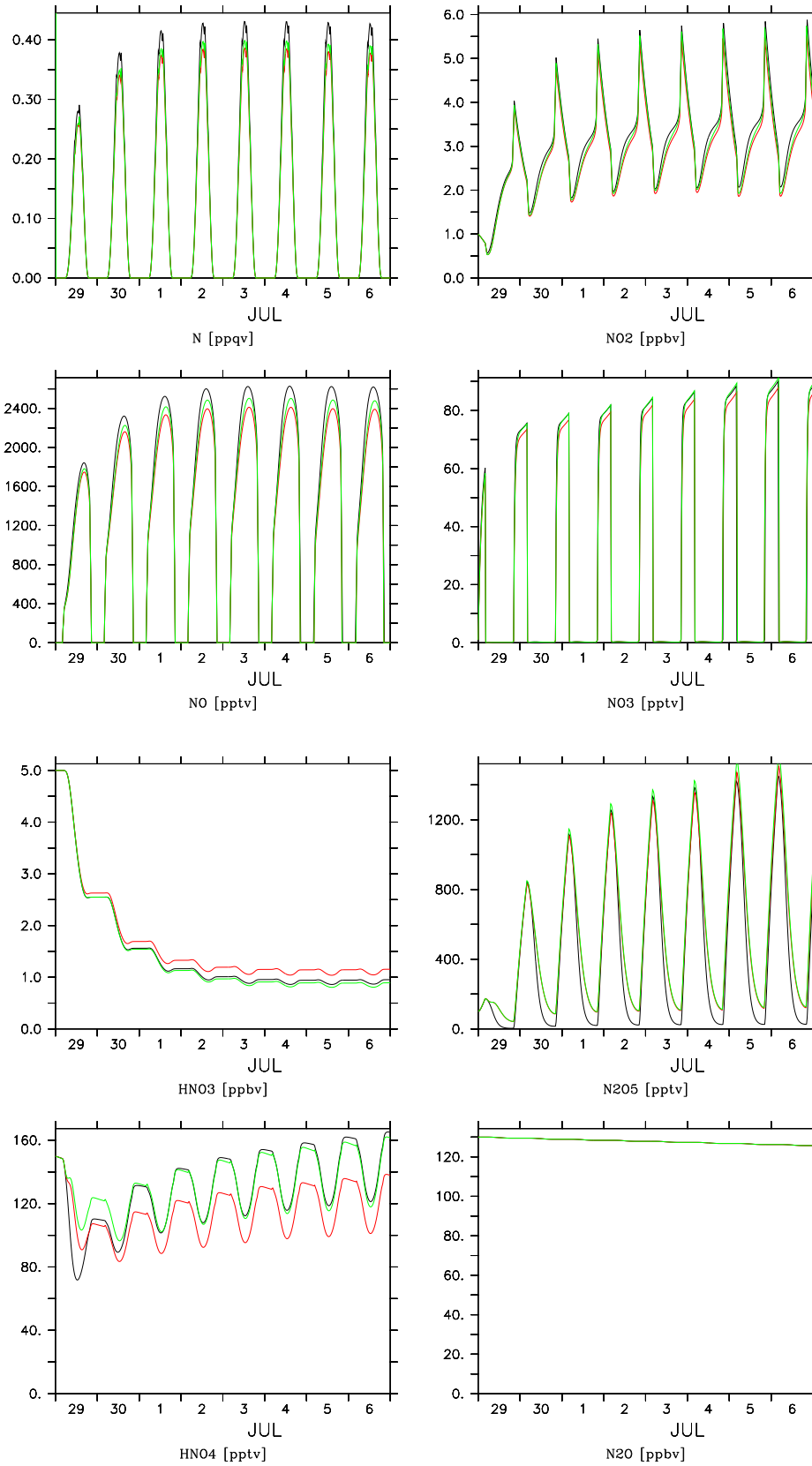


Figure 1: CAABA box model simulation results with MECCA (black), E4CHEM with original rates (red), and E4CHEM with updated rates (green).

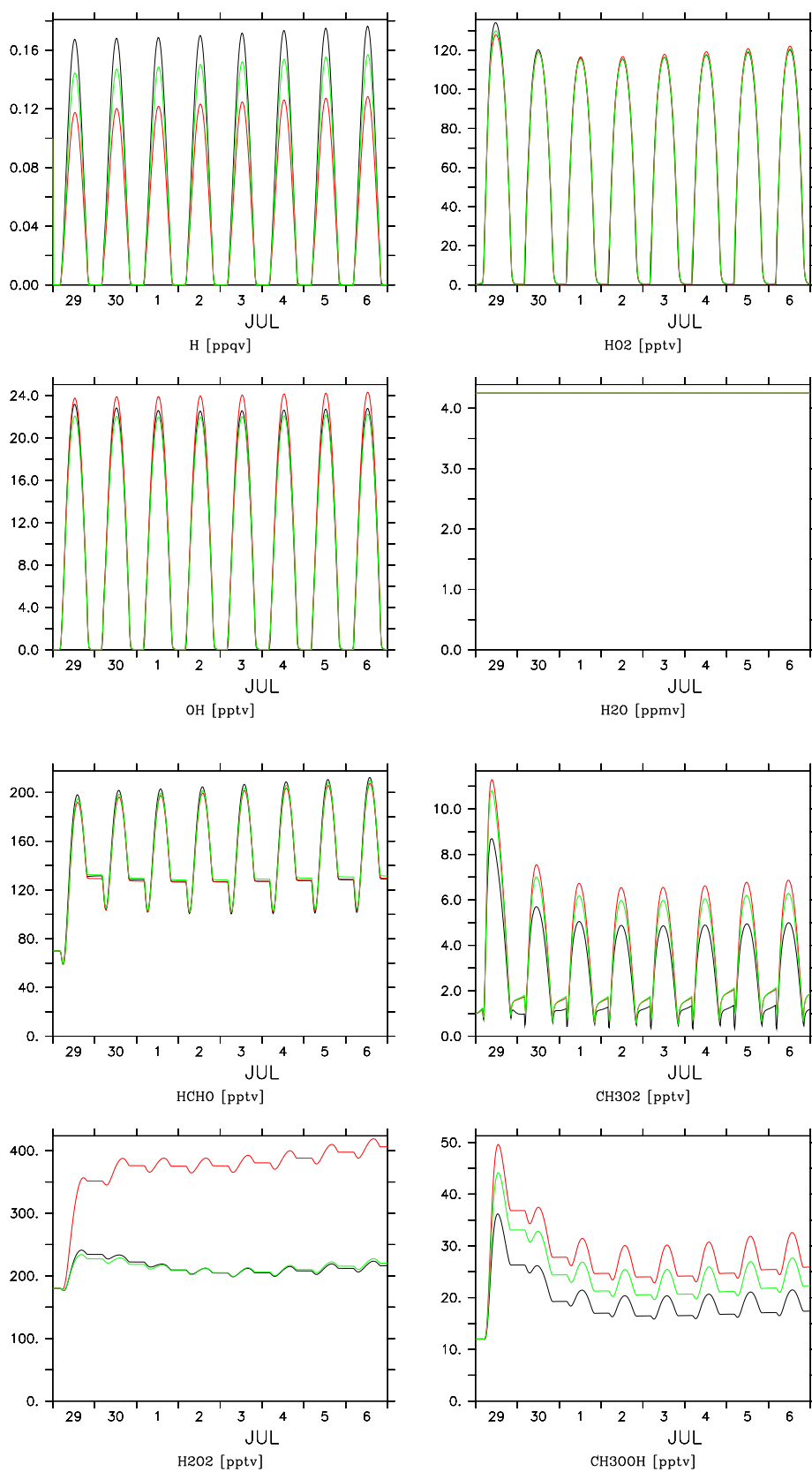


Figure 1: ... continued

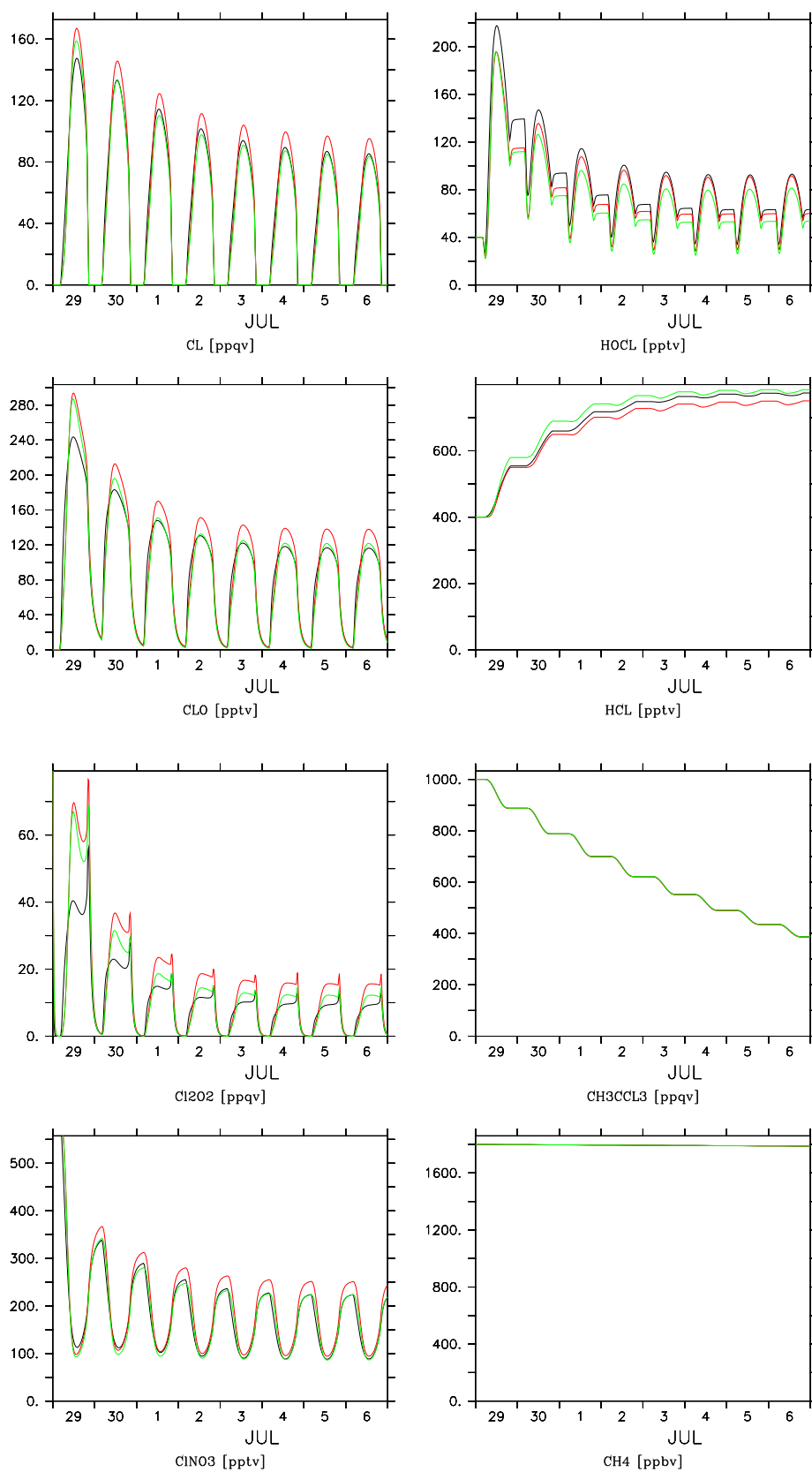


Figure 1: ... continued

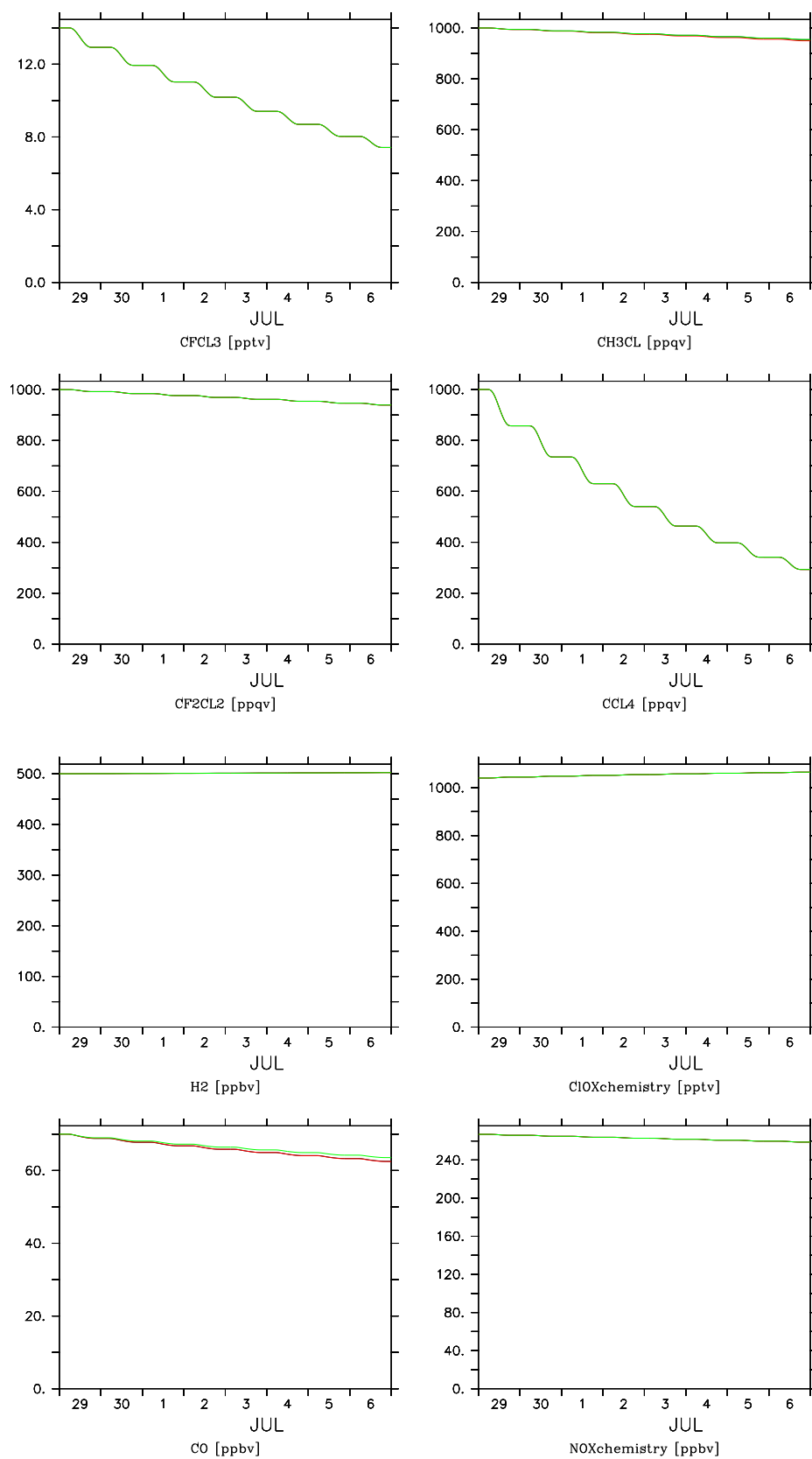


Figure 1: ... continued

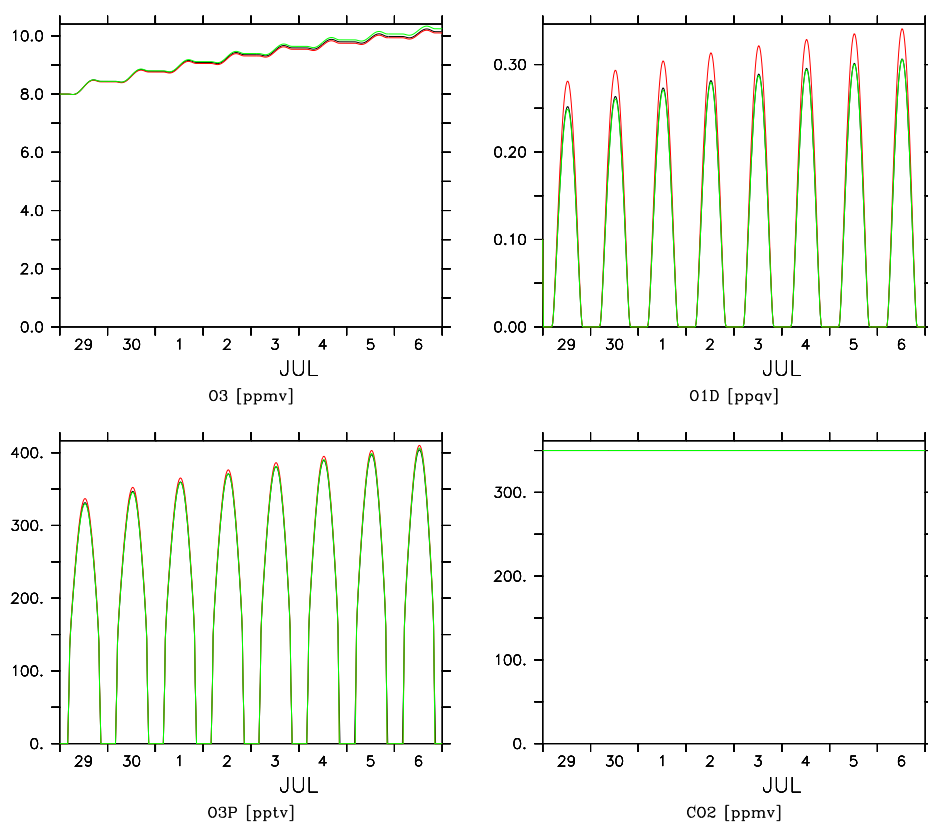


Figure 1: ... continued