



Supplement of

A revised temperature-dependent remineralization scheme for the Community Earth System Model (v1.2.2)

Elizabeth K. Brabson et al.

Correspondence to: Elizabeth K. Brabson (liz.brabson@yale.edu)

The copyright of individual parts of the supplement might differ from the article licence.

Supplemental Materials

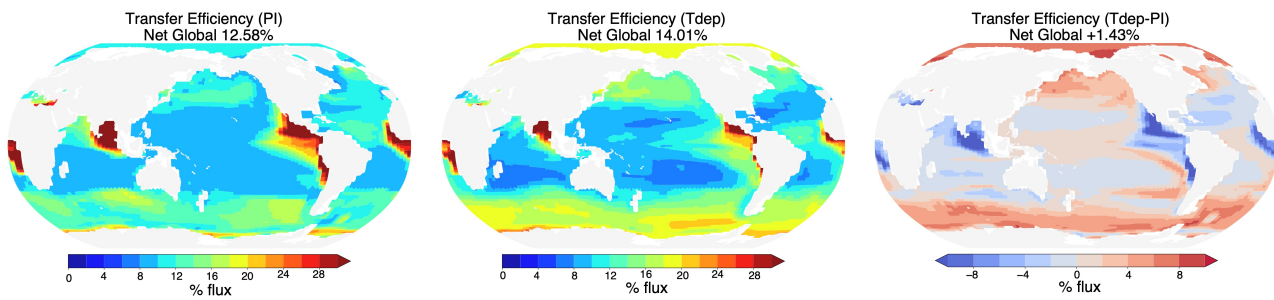


Figure S1. Global transfer efficiency map. Low-resolution configuration for PI control (left) and Tdep simulations (center), as well as difference (right). Net global transfer efficiency is noted.

5

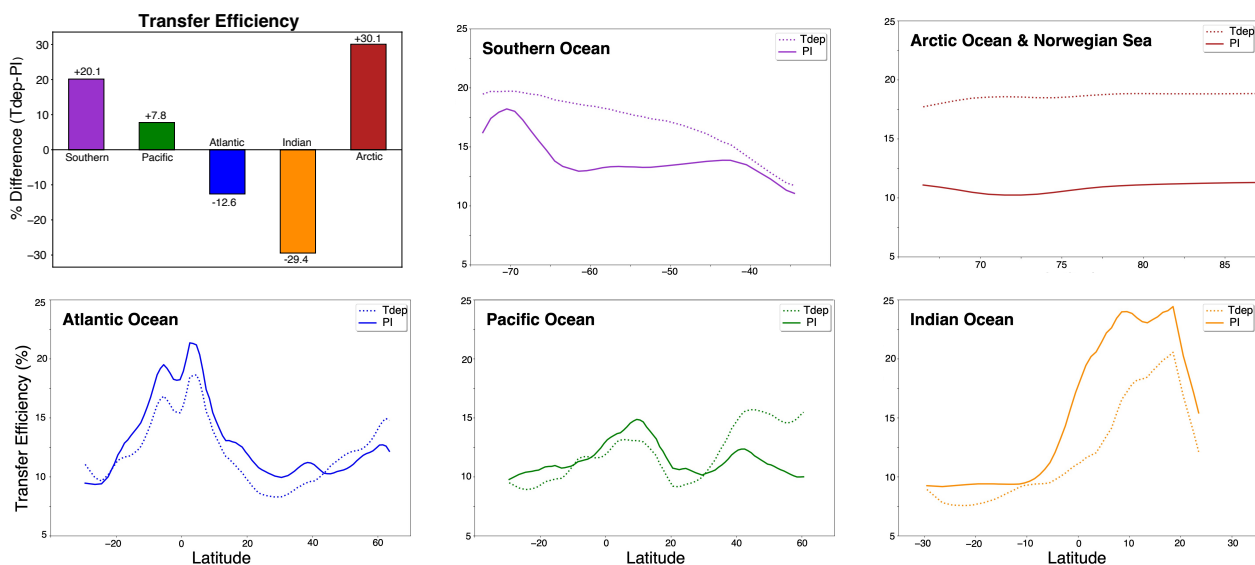


Figure S2. Zonally averaged transfer efficiency. Global assessment of zonally averaged transfer efficiency for low-resolution simulations. Inset shows basin-scale average for transfer efficiency by latitudinal band.

10

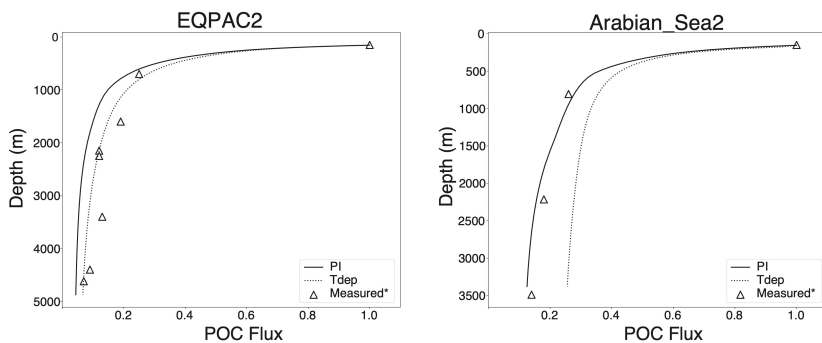


Figure S3. Zonally averaged transfer efficiency. Low-resolution results for two sites differing from high-resolution simulation.

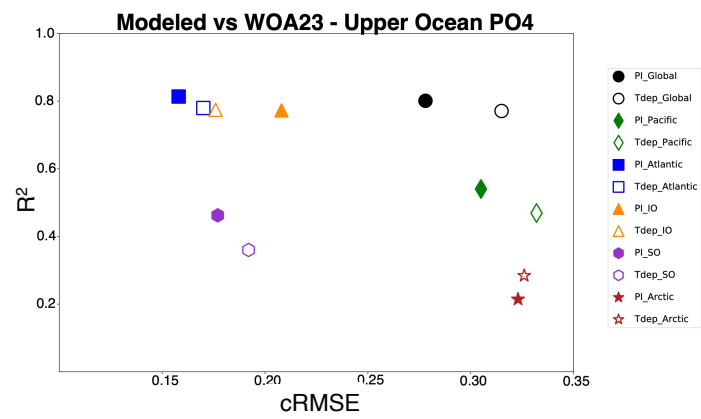


Figure S4. Upper ocean PO4. Low-resolution results for averaged upper 100 meters versus WOA23.