



Supplement of

Implementation of an intermediate-complexity snow-physics scheme (ISBA-Explicit Snow) into a sea ice model (SI³): 1D thermodynamic coupling and validation

Théo Brivoal et al.

Correspondence to: Théo Brivoal (theo.brivoal@meteo.fr)

The copyright of individual parts of the supplement might differ from the article licence.

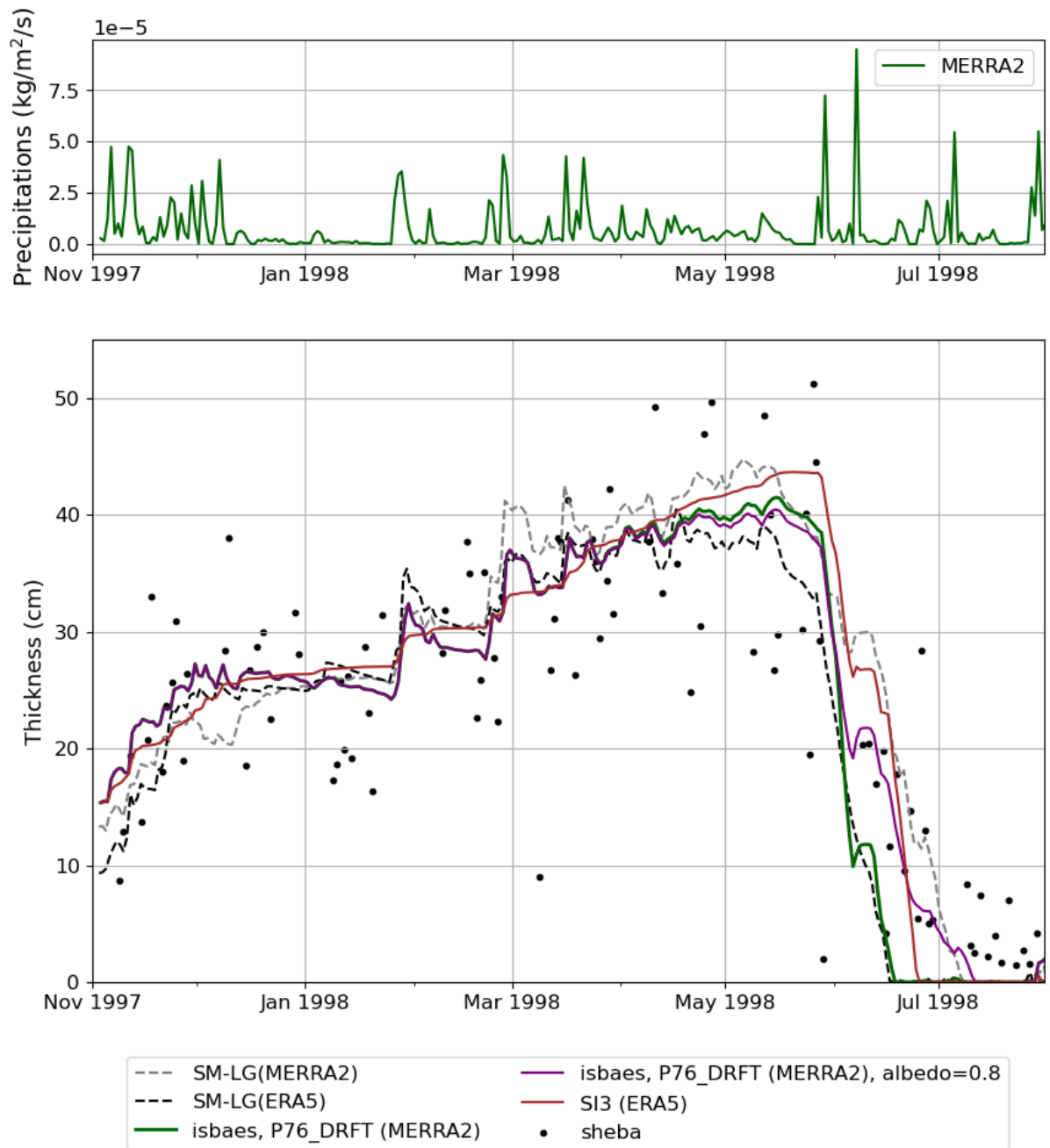


Figure S1: Observed (black dots) and simulated (lines) snow thickness at SHEBA during the November 1997 - September 1998 period. The purple line represents the snow thickness for a simulation using the P76_DRFT configuration, but for which the albedo is fixed to 0.8. This simulation is more consistent with SM-LG(MERRA2) during the melt period.