

Supplementary material for

A revised ocean mixed layer model for better simulating the diurnal variation of ocean skin temperature

Eui-Jong Kang¹, Byung-Ju Sohn^{1,2,*}, Sang-Woo KIM¹, Wonho Kim³, Young-Cheol Kwon⁴,
Seung-Bum Kim⁴, Hyoung-Wook Chun⁴, and Chao Liu²

¹ School of Earth and Environmental Sciences, Seoul National University (SNU), Seoul, South Korea.

² School of Atmospheric Physics, Nanjing University of Information Science and Technology (NUIST), Nanjing, China

³ Korea Institute of Atmospheric Prediction Systems (KIAPS), Seoul, South Korea

⁴ Numerical Modeling Center, Korea Meteorological Administration (KMA), Daejeon, South Korea

Correspondence to: Byung-Ju Sohn (sohn@snu.ac.kr) and Sang-Woo Kim (sangwookim@snu.ac.kr)

Contents of this file

Tables S1 to S2

Figures S1 to S3

Additional supplementary material (Files uploaded separately)

Animated_Ts_hourly_variations--forecast_mode--2020010101-2020010600.gif

Animated_Ts_hourly_variations--reanalysis_mode--2020010101-2020010600.gif

*forecast mode (T_{warm} does not update)

*reanalysis mode (T_{warm} updates with OSTIA SST at 22 UTC daily)

Table S1. Detailed information about the cruises/vessels equipped with the M-AERI.

#	Year	Ship	Region	Start date	End date
1	2013	Knorr (RV)	Atlantic Ocean	Feb 13	Feb 28
2	2013	Ronald H. Brown (RV)	North Atlantic Ocean	Nov 11	Dec 8
3	2014	Celebrity Equinox	Caribbean Sea	May 9	Jun 20
4	2014	Allure of the Seas.	Caribbean Sea	Aug 24	Dec 31
5	2014	Celebrity Equinox	Caribbean Sea	Nov 16	Dec 31
6	2015	Allure of the Seas.	Caribbean Sea North Atlantic Ocean Mediterranean Sea	Jan 1	Nov 29
7	2015	Celebrity Equinox	Caribbean Sea	Jan 1	Dec 26
8	2015	Minerva Uno (RV)	Regional	Mar 27	Apr 13
9	2015	Alliance (RV)	North Atlantic Ocean	Nov 17	Dec 14
10	2016	Celebrity Equinox	Caribbean Sea North Atlantic Ocean Mediterranean Sea	Jan 2	Dec 31
11	2016	Ronald H. Brown (R/V)	Pacific	Nov 7	Mar 19
12	2017	Celebrity Equinox	Caribbean Sea	Jan 1	Dec 31
13	2017	Allure of the Seas	Caribbean Sea	Oct 2	Nov 26
14	2017	Minerva Uno (R/V)	Regional	May 25	Jun 11
15	2018	Celebrity Equinox	Caribbean Sea	Jan 11	Sep 23
16	2018	Adventure of the Seas	Caribbean Sea US East Coast	Feb 12	Dec 31
17	2018	Allure of the Seas	Caribbean Sea	Feb 18	Oct 14
18	2018	Ronald H. Brown (R/V)	Global	Mar 7	Oct 23
19	2019	Adventure of the Seas	Caribbean Sea US East Coast	Jan 1	Oct 30
20	2019	Ronald H. Brown (R/V)	North Atlantic Ocean	Feb 24	Mar 29
21	2019	Ronald H. Brown (R/V)	US East Coast	May 7	May 31
22	2019	Ronald H. Brown (R/V)	US East Coast	Apr 8	Apr 30
23	2020	Ronald H. Brown (R/V)	Caribbean Sea	Jan 6	Feb 13
24	2020	Ronald H. Brown (R/V)	Caribbean Sea Atlantic Ocean	Feb 21	Apr 17

Knorr: Woods Hole Oceanographic Institution (WHOI) research vessel (RV)

Ronald H. Brown: National Oceanic and Atmospheric Administration (NOAA) research vessel (RV)

Minerva Uno: Italy Alpine Ocean Seismic Survey Inc. research vessel (RV)

Alliance: North Atlantic Treaty Organization (NATO) research vessel (RV)

Celebrity Equinox: Royal Caribbean International (RCI) cruise ship

Allure of the Seas: Royal Caribbean International (RCI) cruise ship

Adventure of the Seas: Royal Caribbean International (RCI) cruise ship

Table S2. Locations of used buoys in the TAO array

#	Location	#	Location	#	Location
1	0° 110°W	19	2°S 140°W	37	5°S 165°E
2	0° 125°W	20	2°S 155°W	38	5°S 170°W
3	0° 140°W	21	2°S 165°E	39	5°S 180°
4	0° 155°W	22	2°S 170°W	40	5°S 95°W
5	0° 165°E	23	2°S 180°	41	8°N 110°W
6	0° 170°W	24	2°S 95°W	42	8°N 125°W
7	0° 180°	25	5°N 110°W	43	8°N 155°W
8	0° 95°W	26	5°N 125°W	44	8°N 165°E
9	2°N 110°W	27	5°N 140°W	45	8°N 170°W
10	2°N 125°W	28	5°N 155°W	46	8°N 180°
11	2°N 140°W	29	5°N 165°E	47	8°N 95°W
12	2°N 155°W	30	5°N 170°W	48	8°S 110°W
13	2°N 165°E	31	5°N 180°	49	8°S 125°W
14	2°N 170°W	32	5°N 95°W	50	8°S 155°W
15	2°N 180°	33	5°S 110°W	51	8°S 165°E
16	2°N 95°W	34	5°S 125°W	52	8°S 170°W
17	2°S 110°W	35	5°S 140°W	53	8°S 180°
18	2°S 125°W	36	5°S 155°W	54	8°S 95°W

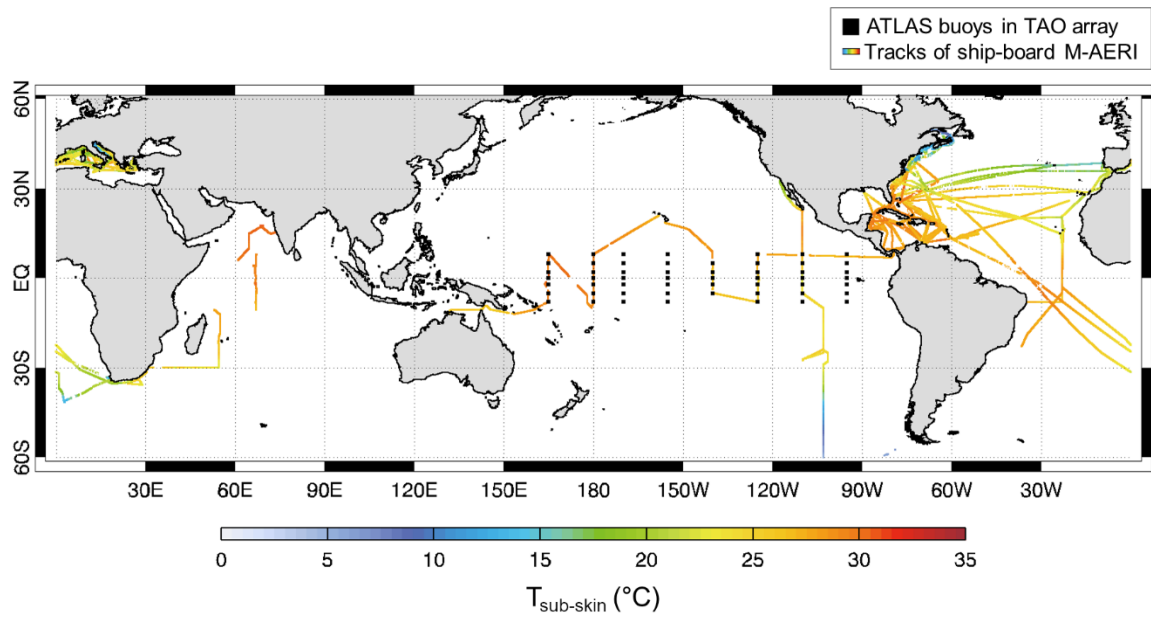


Figure S1. ATLAS mooring buoy locations given with black squares in the tropical Pacific and ship tracks equipped with M-AERI instrument depicted with solid color lines.

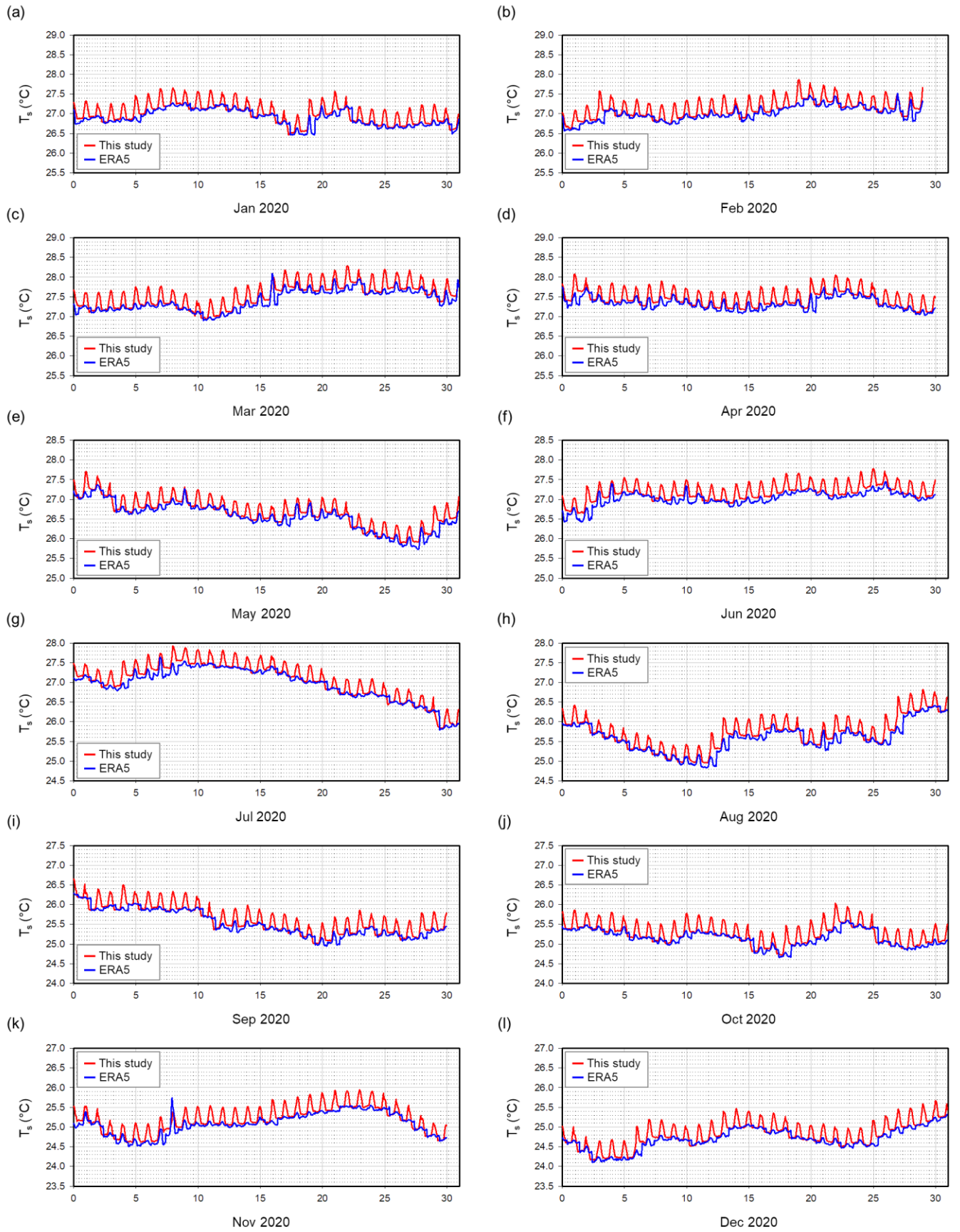


Figure S2. Time series of T_s from the model simulations (red) and ERA5 (blue) at the location of 0°N , 155°W from January to December 2020..

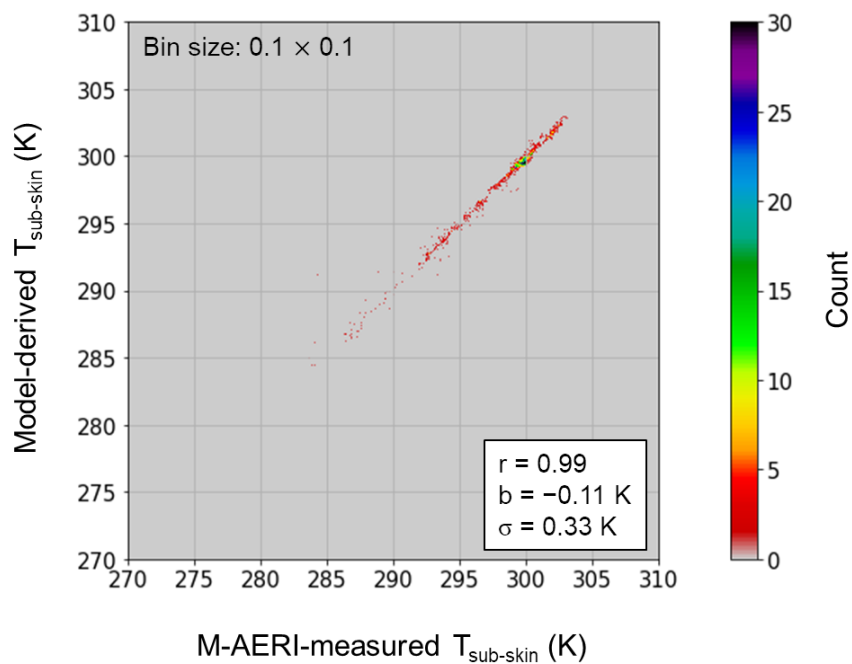


Figure S3. Scatterplot of model-derived IR equivalent temperature with a scaling factor of 0.2 applied to the Saunders constant vs. M-AERI-measured temperature in the year 2020. The color scale represents the data count. The r , b , and σ in the inset denote the correlation coefficient, mean deviation, and standard deviation, respectively.