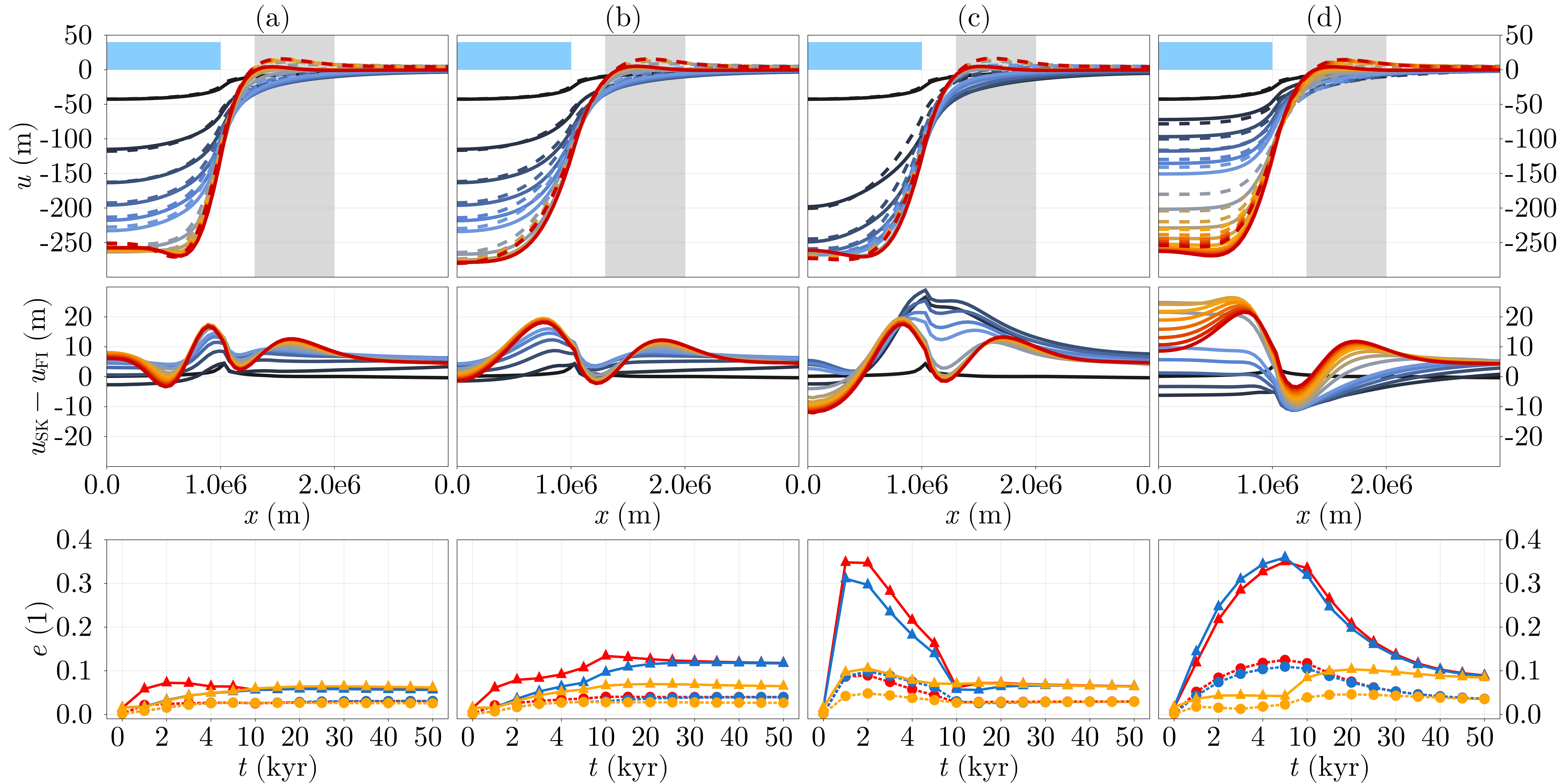


ice (height scaled 1:25) forebulge Seakon LV-ELVA

$t = 0$ kyr $t = 1$ kyr $t = 2$ kyr $t = 3$ kyr $t = 4$ kyr $t = 5$ kyr $t = 10$ kyr $t = 15$ kyr
 $t = 20$ kyr $t = 25$ kyr $t = 30$ kyr $t = 35$ kyr $t = 40$ kyr $t = 45$ kyr $t = 50$ kyr



\hat{e}_{ELRA} \bar{e}_{ELRA} \hat{e}_{ELVA} \bar{e}_{ELVA} $\hat{e}_{LV-ELVA}$ $\bar{e}_{LV-ELVA}$