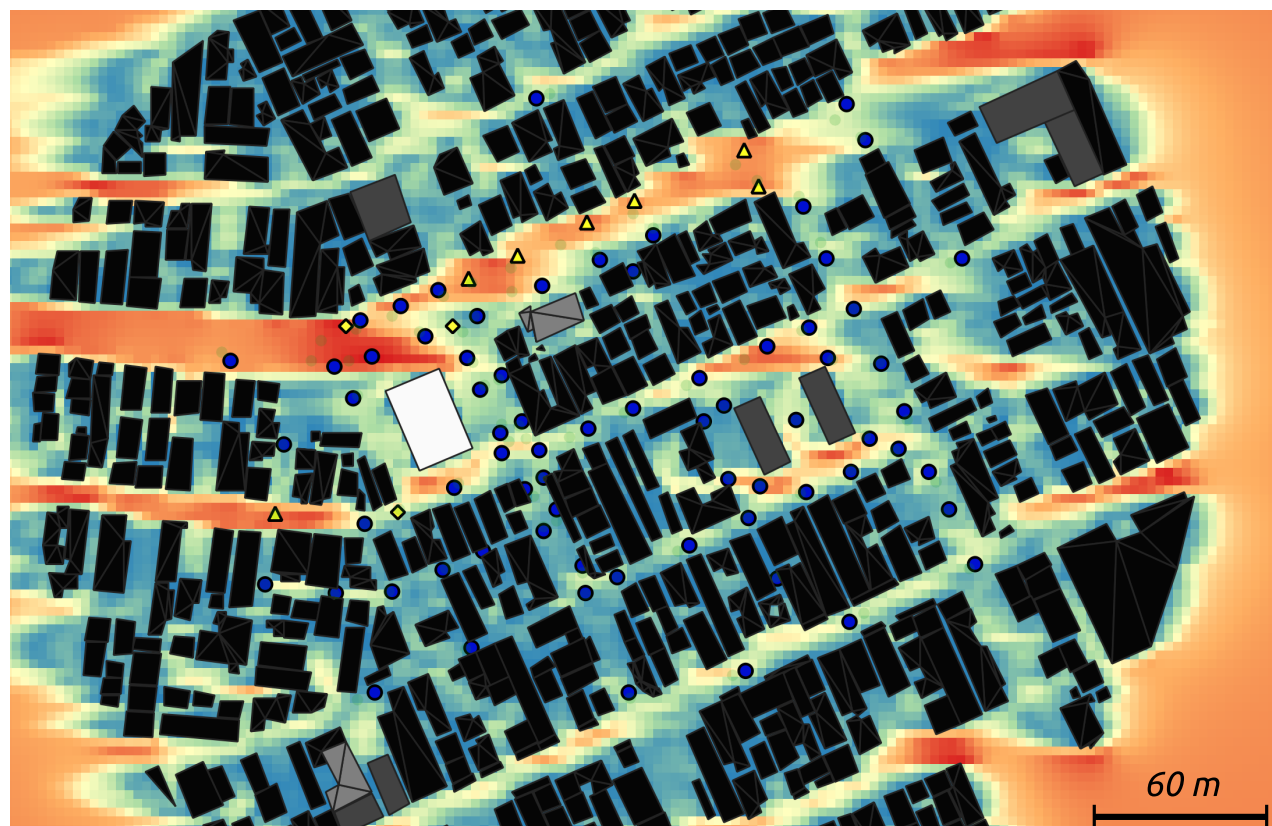


**(a) Horizontal section at 2 m high
Wind speed when wind comes from East**



$\Delta WS = U_{Rock} - AIJ \text{ wind speed (m/s)}$

Building height (m)

U_{Rock} wind speed (m/s)

● $-0.66 \leq \Delta WS < 0.35$

▲ $0.35 \leq \Delta WS$ (overestimation)

◆ $\Delta WS < -0.66$ (underestimation)

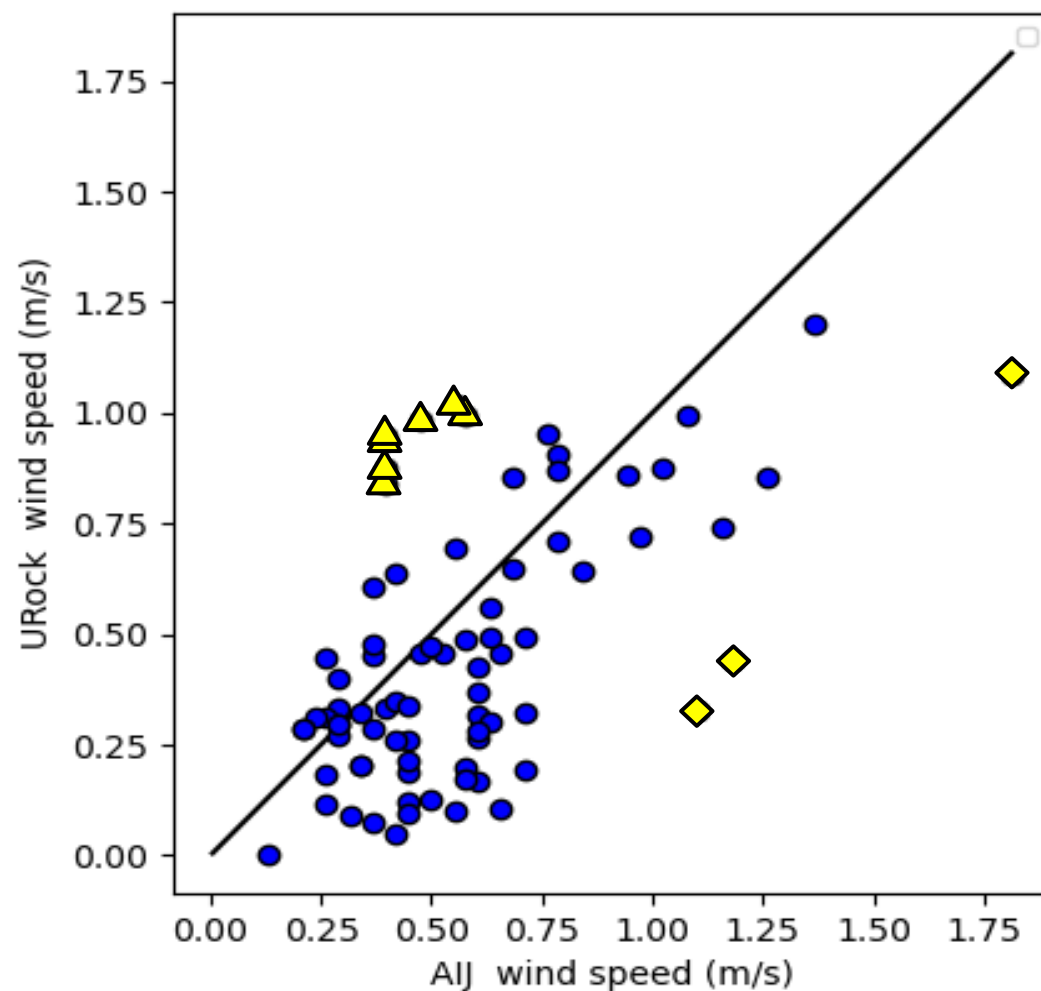
■ 3 - 14 ■ 37 - 49

■ 14 - 26 ■ 49 - 60

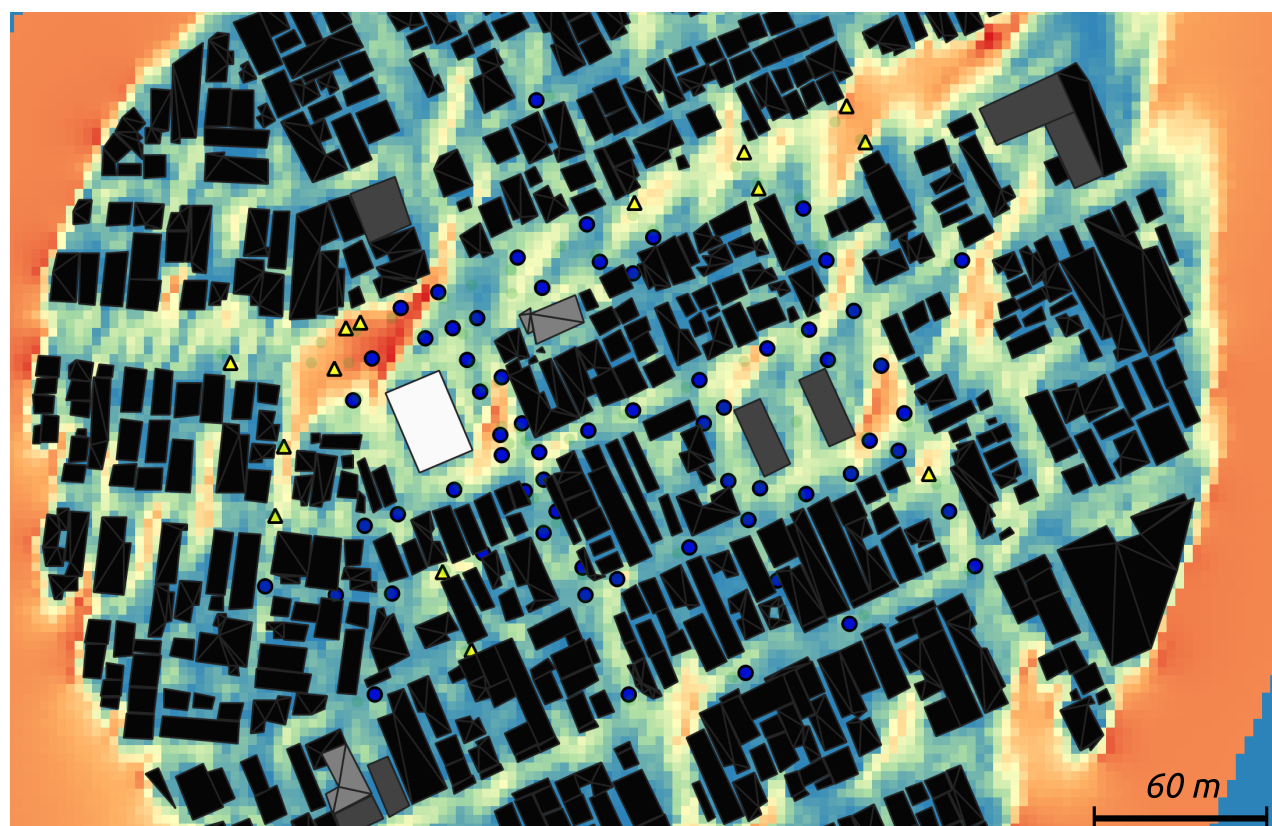
■ 26 - 37

0 3.67

(b) Wind speed at 2 m high when wind comes from East



**(c) Horizontal section at 2 m high
Wind speed when wind comes from south-southeast**



$\Delta WS = U_{Rock} - AIJ \text{ wind speed (m/s)}$

Building height (m)

U_{Rock} wind speed (m/s)

● $\Delta WS < 0$

▲ $0 \leq \Delta WS$ (overestimation)

■ 3 - 14 ■ 37 - 49

■ 14 - 26 ■ 49 - 60

■ 26 - 37

0 3.73

(d) Wind speed at 2 m high when wind comes from south-southeast

