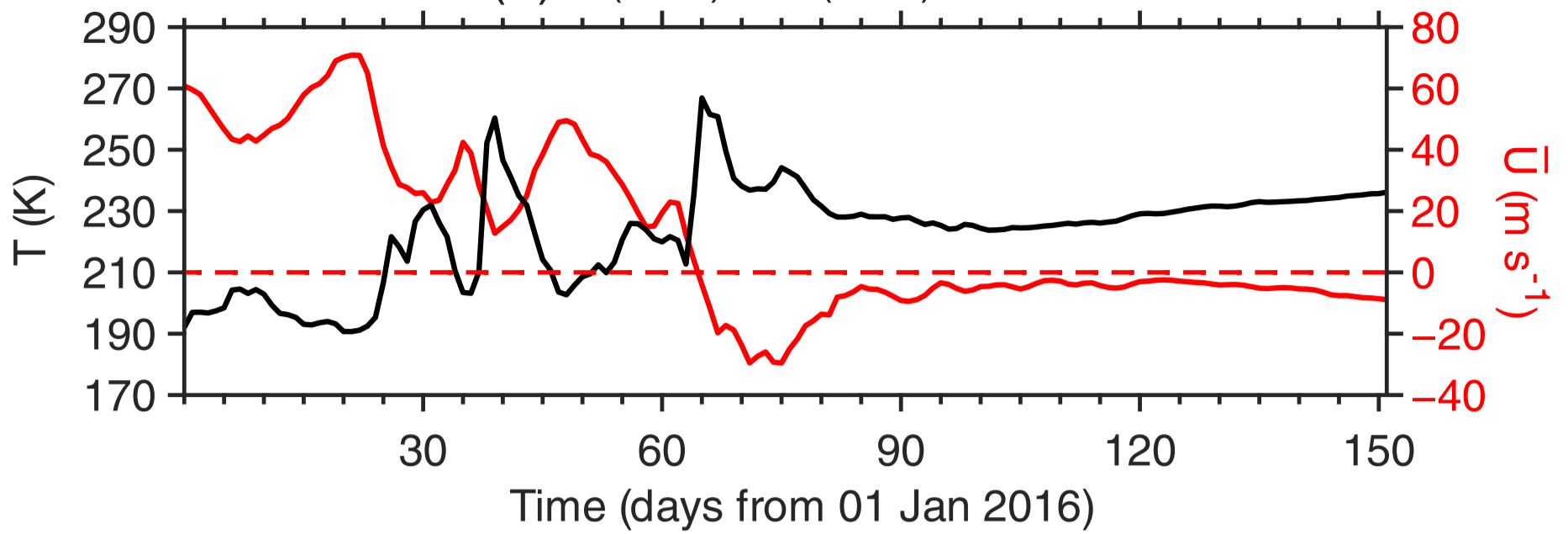
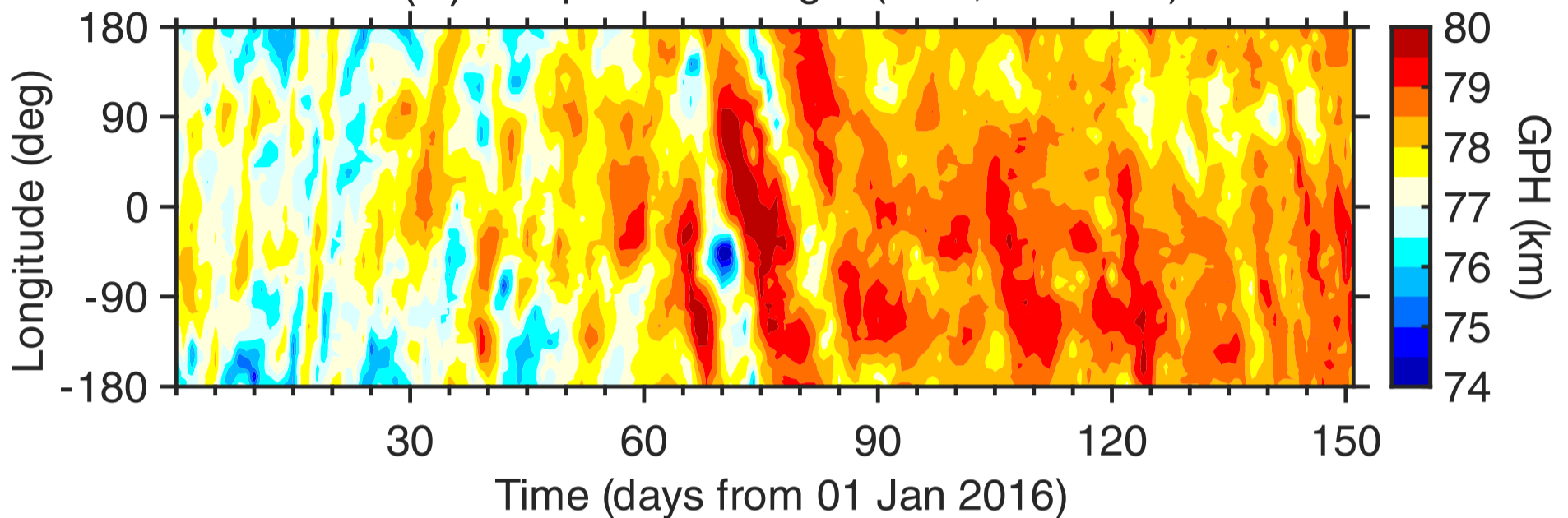


SD/WACCM-X

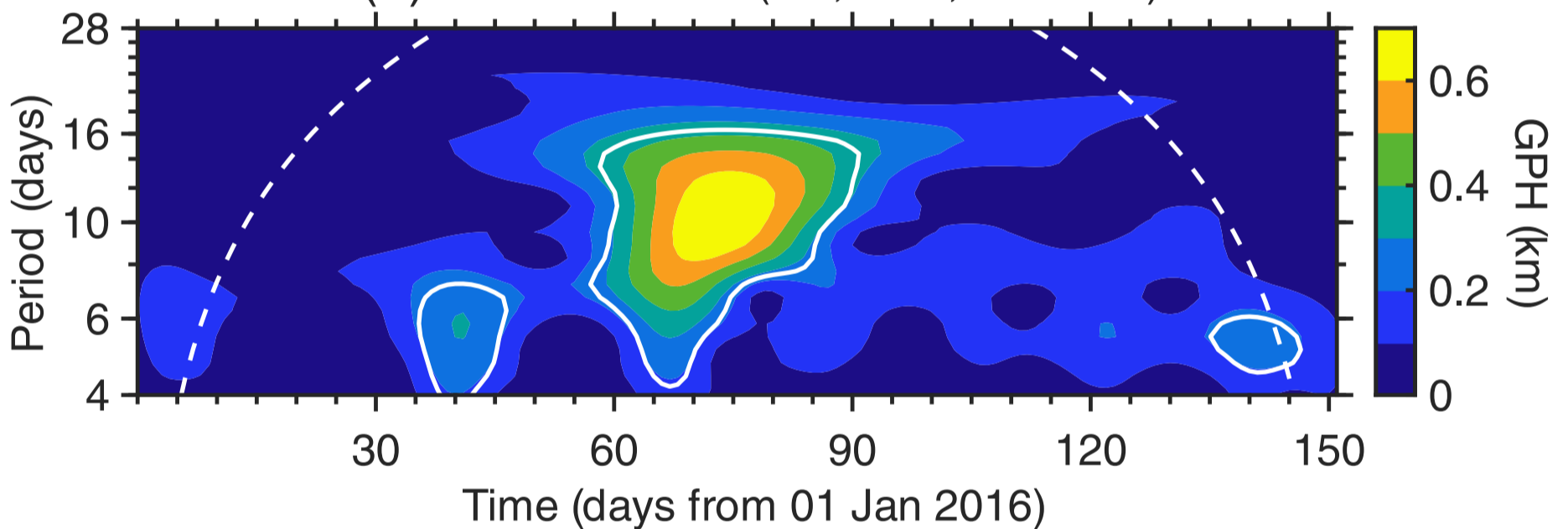
(a) T (90°N) & \bar{U} (60°N) at 10 hPa



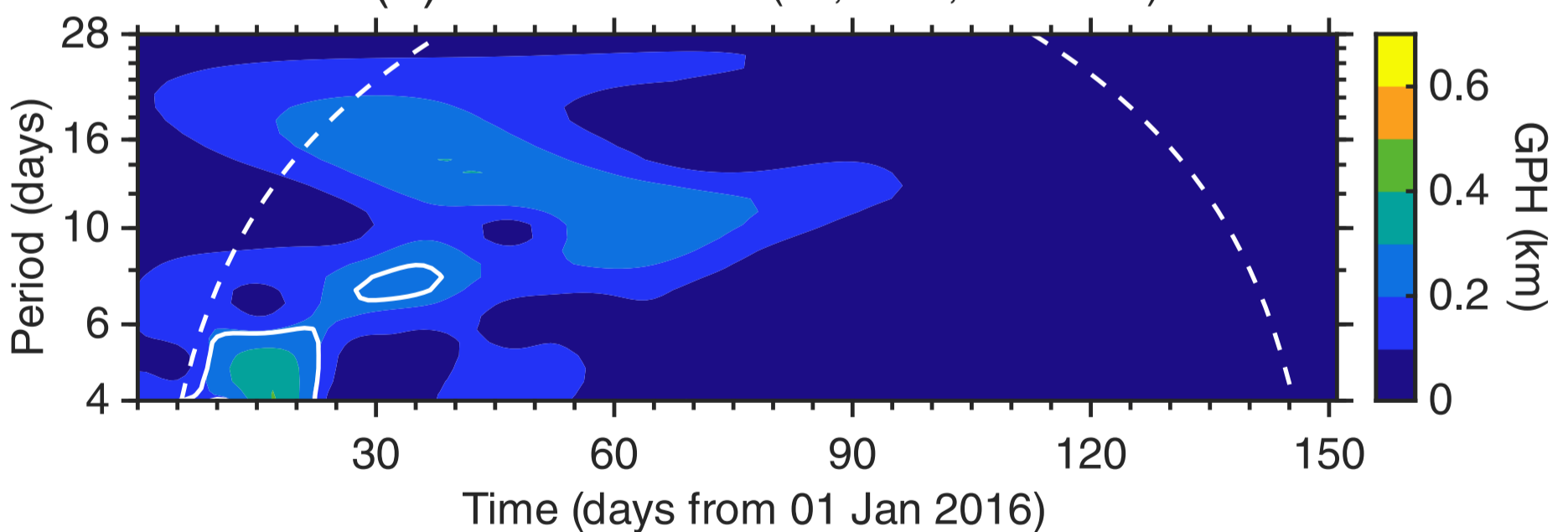
(b) Geopotential height (55°N , 0.01 hPa)



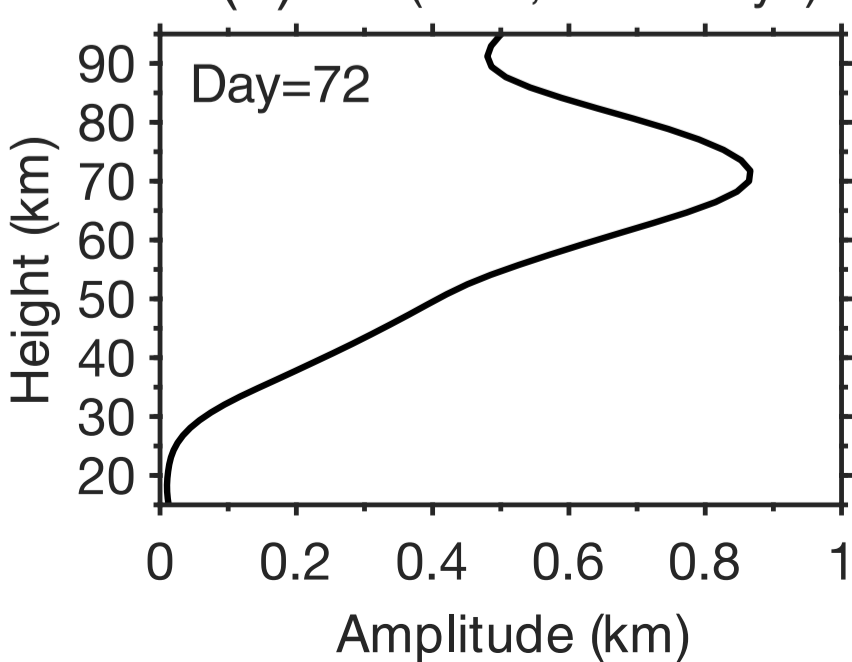
(c) Fourier-wavelet (W1, 55°N , 0.01 hPa)



(d) Fourier-wavelet (E1, 55°N , 0.01 hPa)



(e) W1 (55°N , $T=10$ days)



(f) W1 (55°N , $T=10$ days)

