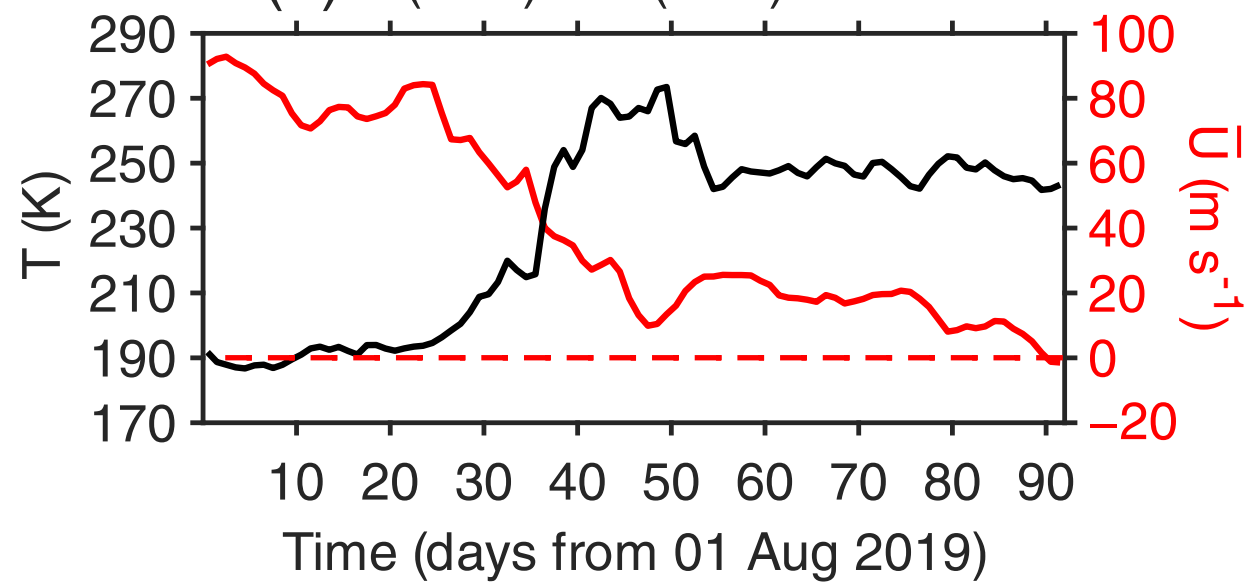
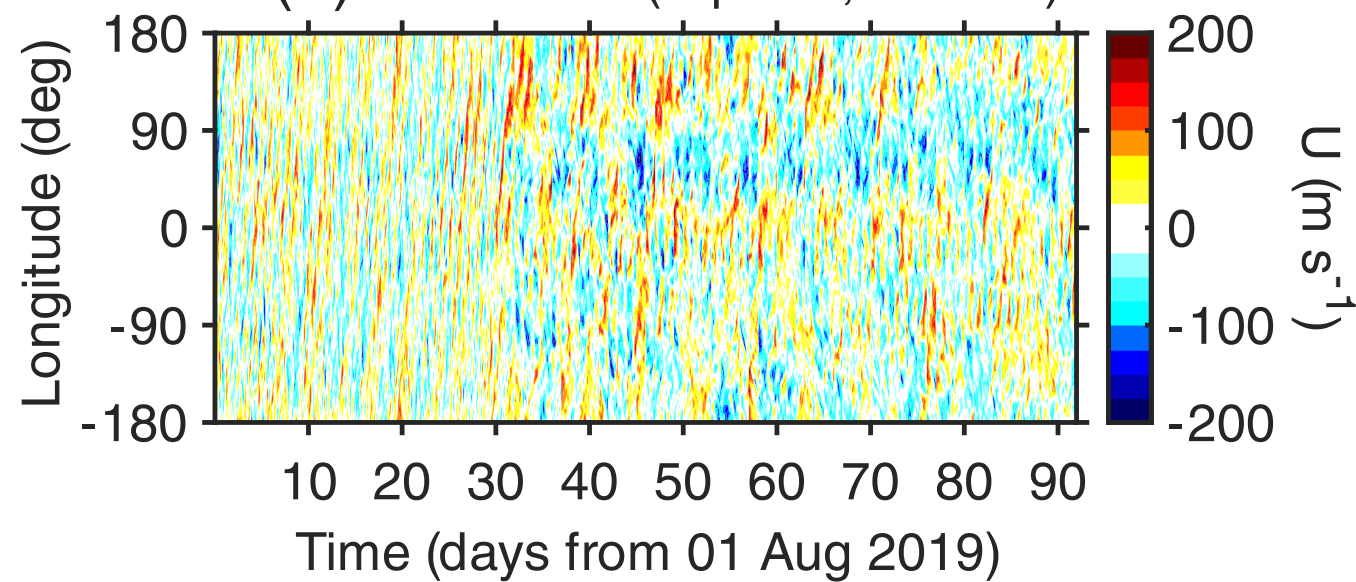


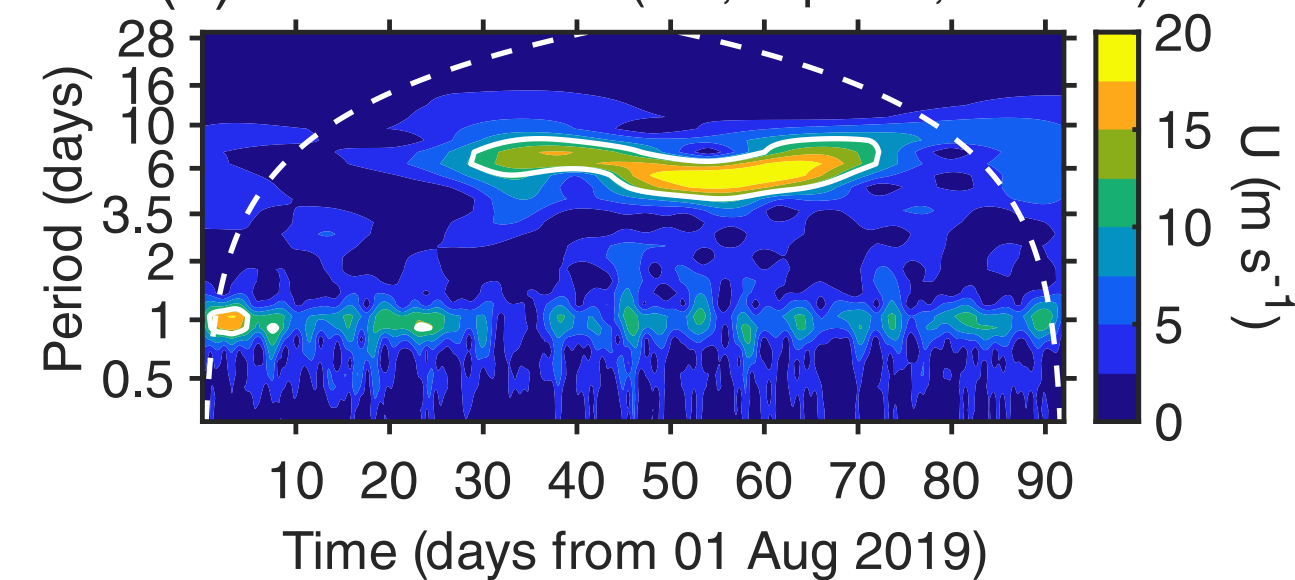
## GAIA

(a)  $T$  (90°S) &  $\bar{U}$  (60°S) at 10 hPa

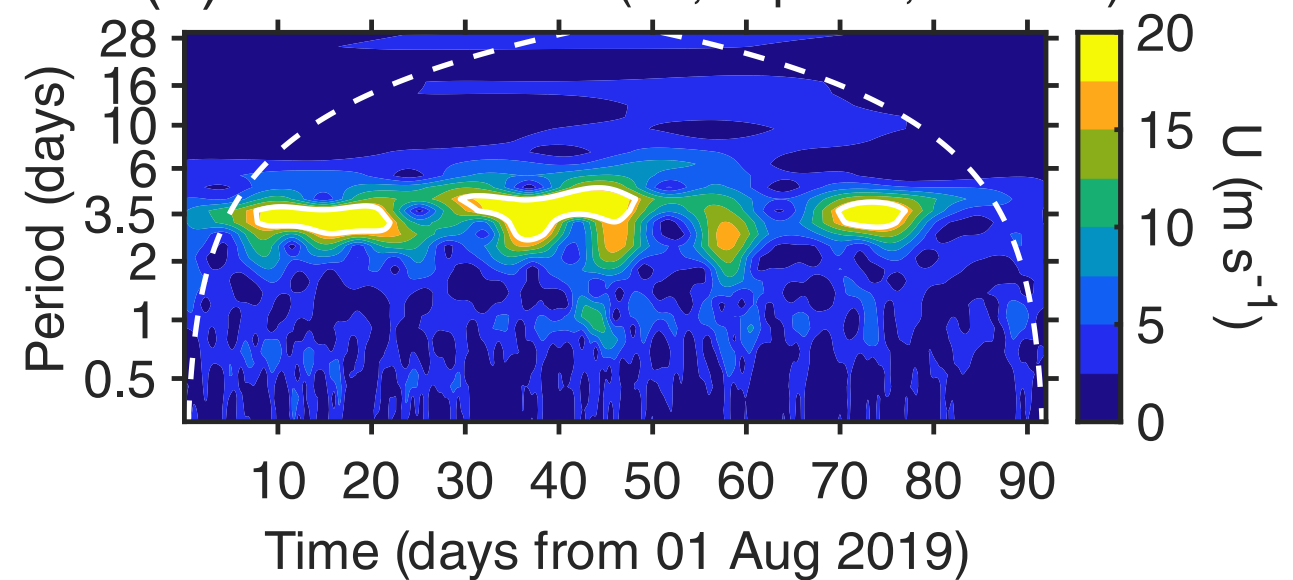
(b) Zonal wind (Equator, 100 km)



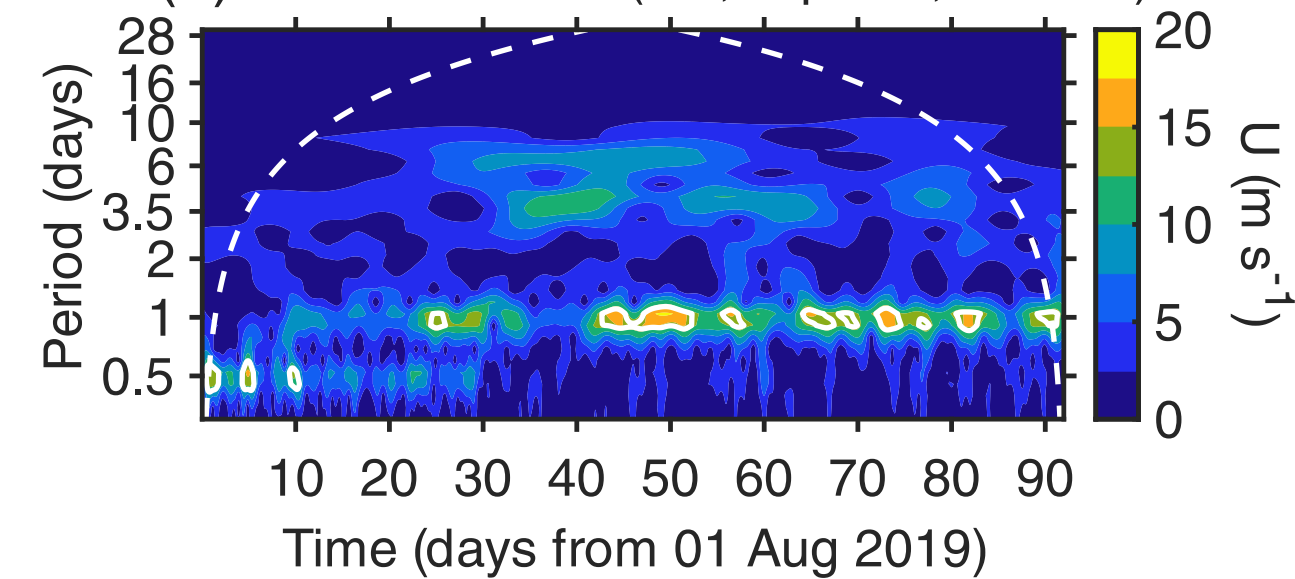
(c) Fourier-wavelet (W1, Equator, 100 km)



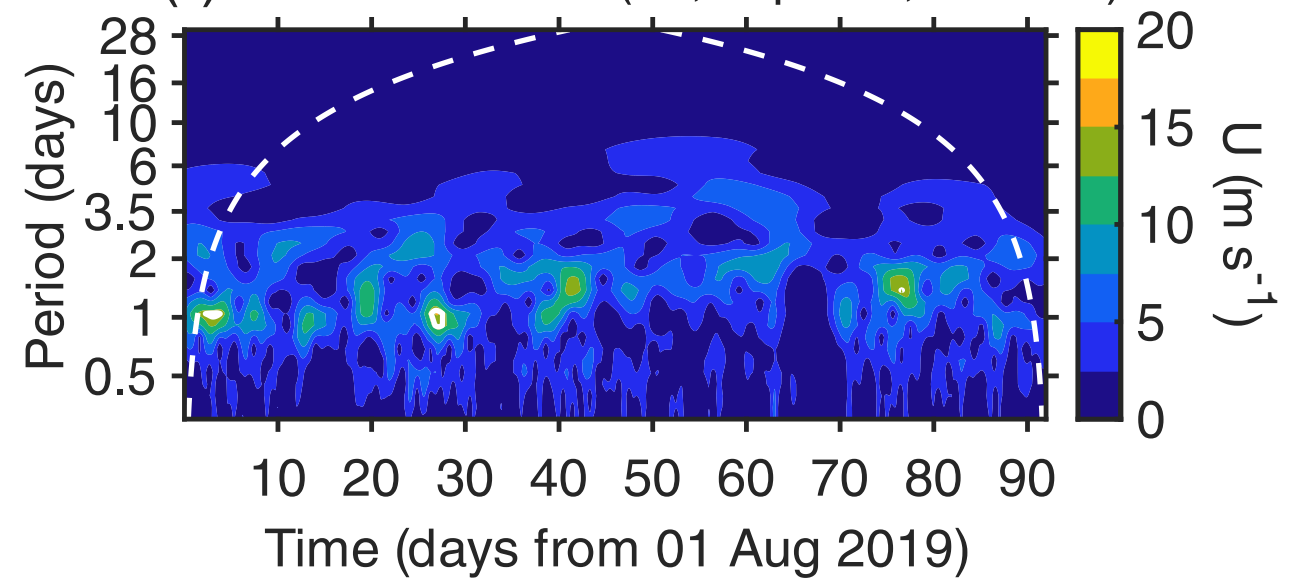
(d) Fourier-wavelet (E1, Equator, 100 km)



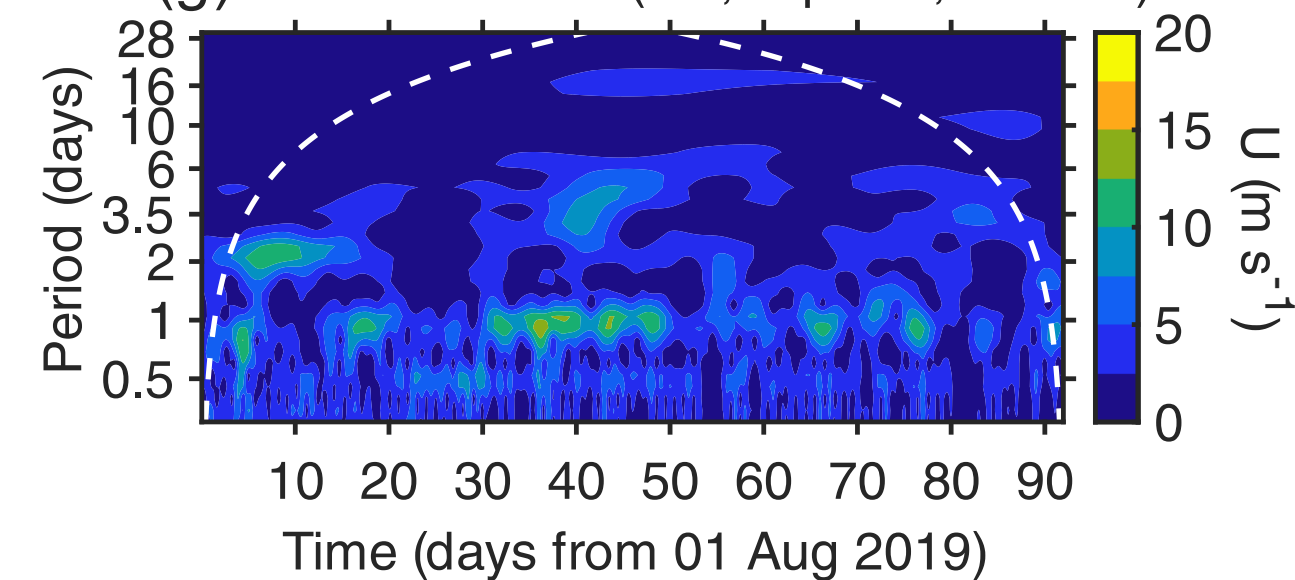
(e) Fourier-wavelet (W2, Equator, 100 km)



(f) Fourier-wavelet (E2, Equator, 100 km)



(g) Fourier-wavelet (W3, Equator, 100 km)



(h) Fourier-wavelet (E3, Equator, 100 km)

