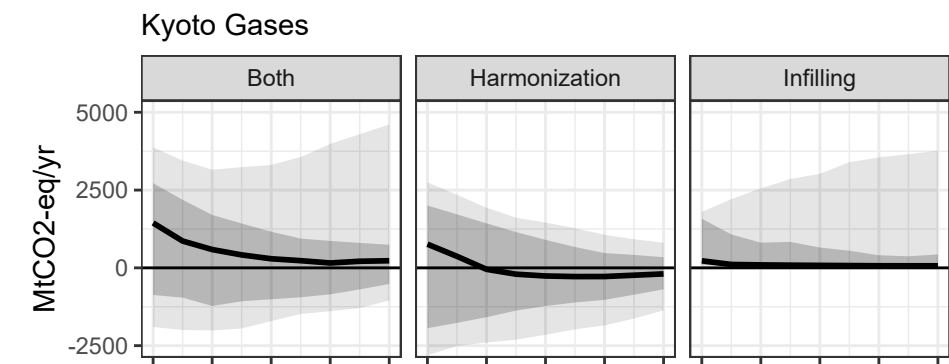
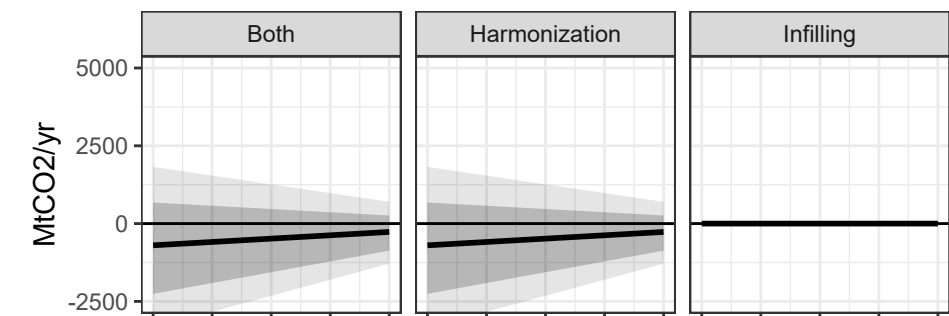


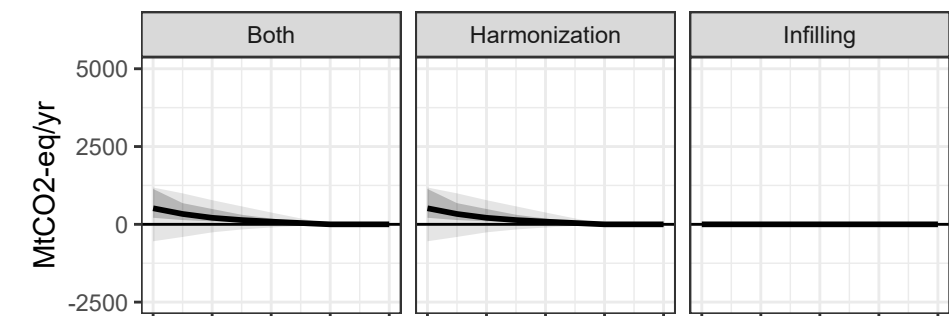
(a) Emissions processing effect on all scenarios.



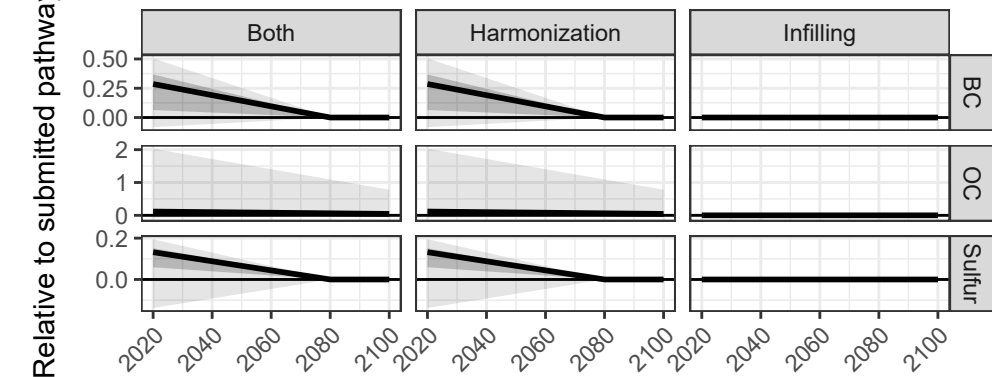
(b) CO₂ AFOLU



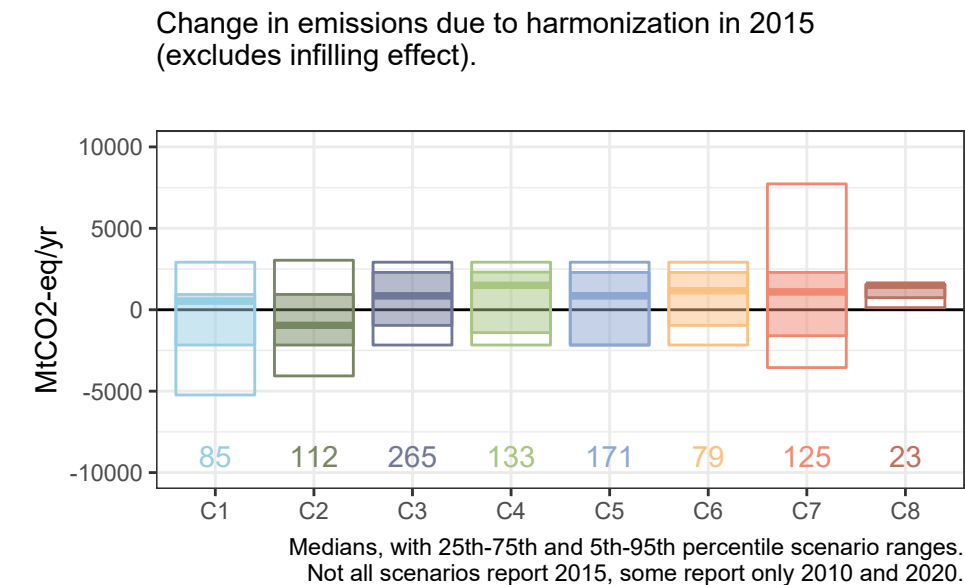
(c) CH₄



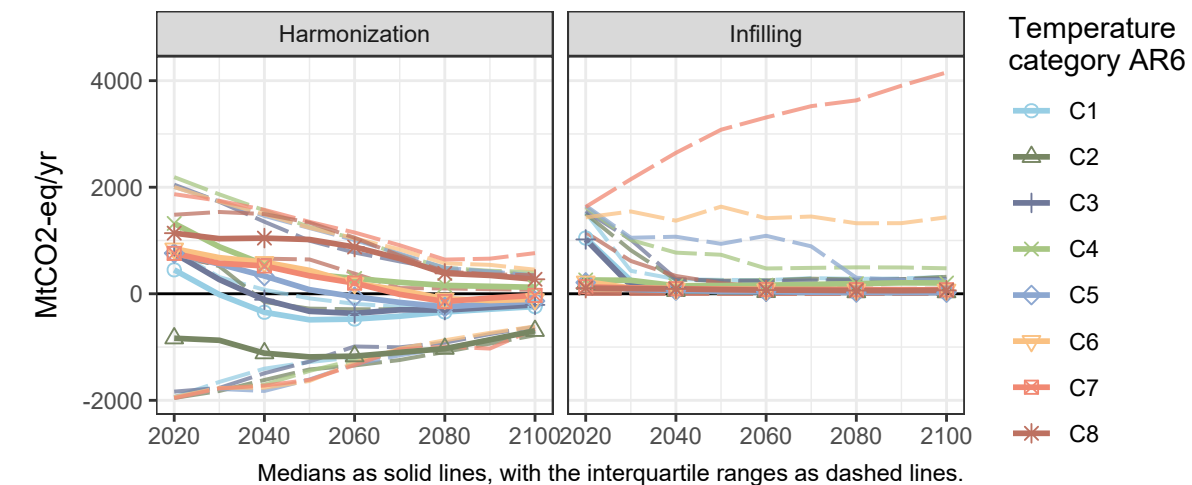
(d) Sulfur, Black Carbon (BC), and Organic Carbon (OC)



(e) Harmonization and infilling effect by category



(f) Effect of harmonization and infilling over time by category.



(g) Cumulative total effect over peak warming levels

