



Corrigendum to “A local data assimilation method (Local DA v1.0) and its application in a simulated typhoon case” published in Geosci. Model Dev., 15, 8869–8897, 2022

Shizhang Wang and Xiaoshi Qiao

Key Laboratory of Transportation Meteorology of China Meteorological Administration,
 Nanjing Joint Institute for Atmospheric Sciences, Nanjing, 210041, China

Correspondence: Xiaoshi Qiao (497390719@qq.com)

Published: 31 January 2023

Due to an oversight in the production process, an incorrect version of Fig. 18 was inserted into the paper. The correct figure with its caption can be seen below.

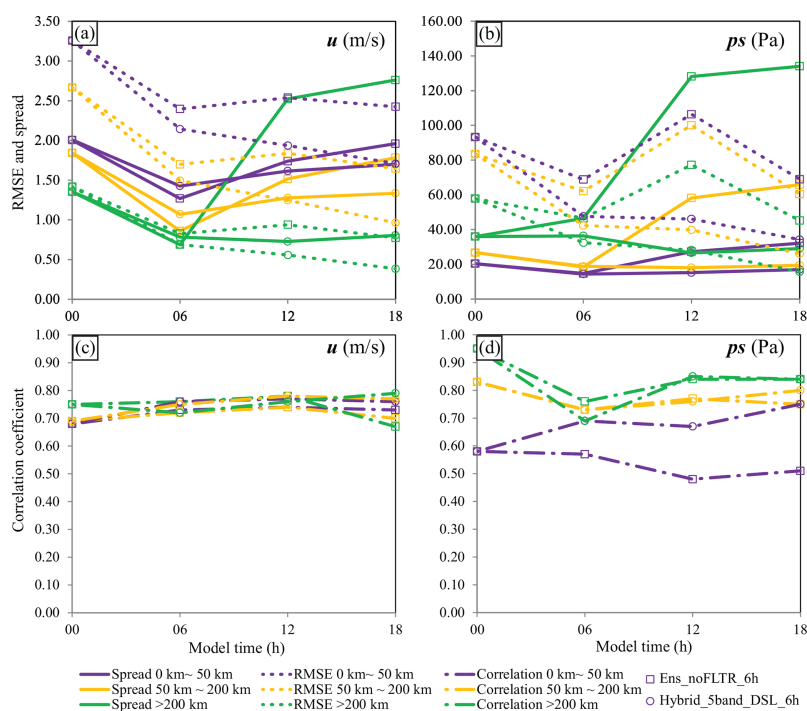


Figure 18. The ensemble spread (solid lines), RMSE (dotted lines), and correlation coefficient between spread and RMSE (dotted dashed lines) in three scales for Ens_noFLTR_6h (rectangle markers) and Hybrid_5band_DSL_6h (circle markers), where scales of 0–50, 50–200, and > 200 km are denoted by blue, orange, and green, respectively.