



Supplement of

Introducing new lightning schemes into the CHASER (MIROC) chemistry–climate model

Yanfeng He et al.

Correspondence to: Yanfeng He (hyf412694462@gmail.com)

The copyright of individual parts of the supplement might differ from the article licence.

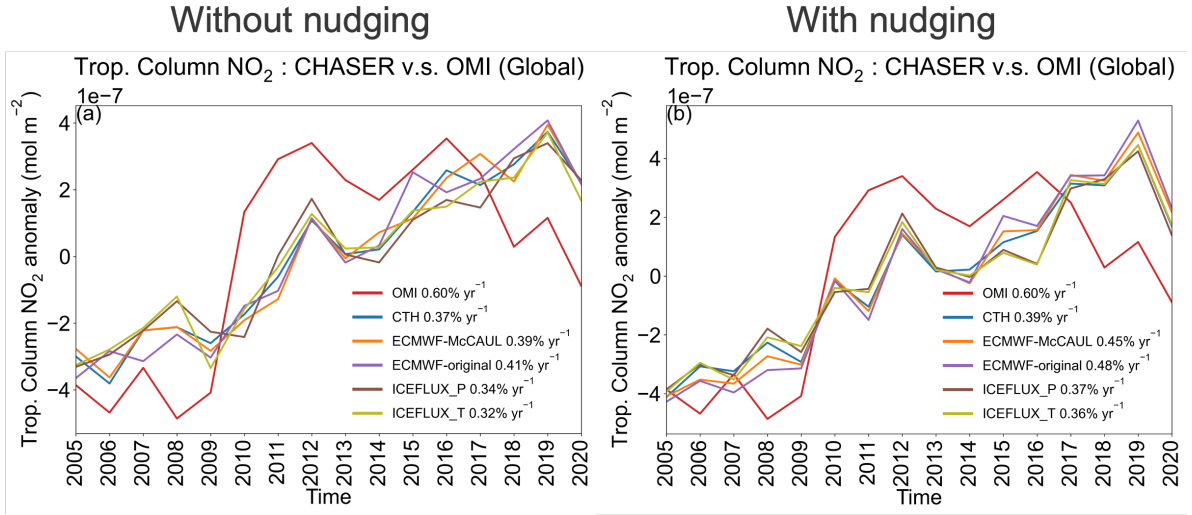


Figure S1: The comparisons between the annual global mean OMI tropospheric column NO₂ anomaly and the CHASER annual global mean tropospheric column NO₂ anomaly from 2005 to 2020. All the modelled trends displayed are simulated with interannually varying LNO_x emissions (The first set of experiments).

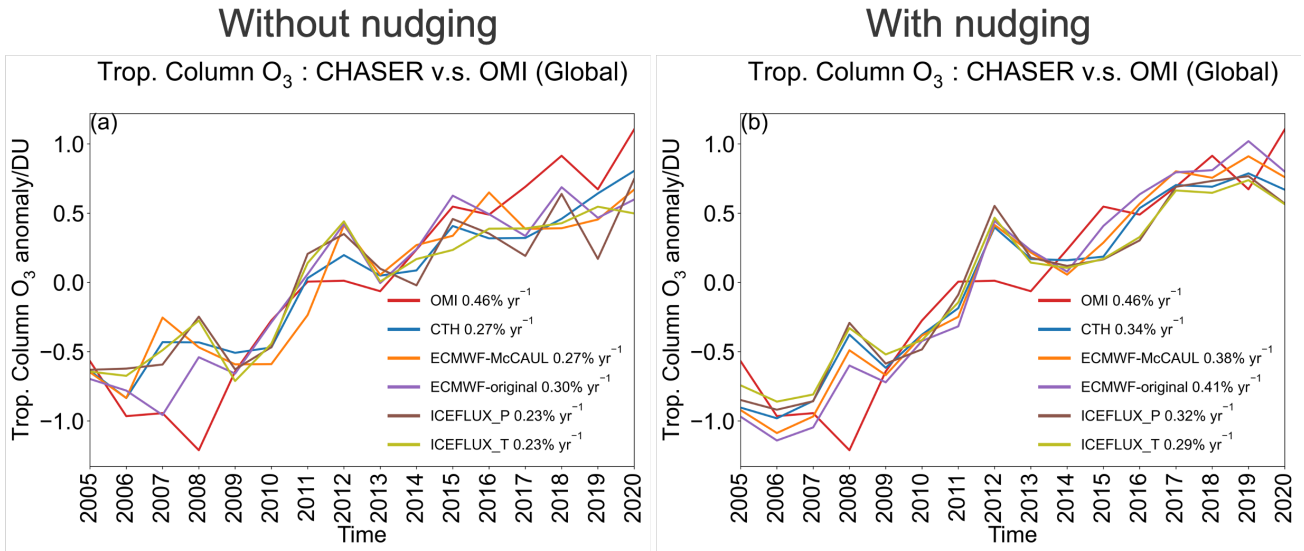


Figure S2: The comparisons between the annual global mean OMI/MLS tropospheric column O₃ anomaly and the CHASER annual global mean tropospheric column O₃ anomaly from 2005 to 2020. All the modelled trends displayed are simulated with interannually varying LNO_x emissions (The first set of experiments).