



*Supplement of*

## **Modeling the short-term fire effects on vegetation dynamics and surface energy in southern Africa using the improved SSiB4/TRIFFID-Fire model**

**Huilin Huang et al.**

*Correspondence to:* Huilin Huang (hhllbao.work@gmail.com)

The copyright of individual parts of the supplement might differ from the article licence.

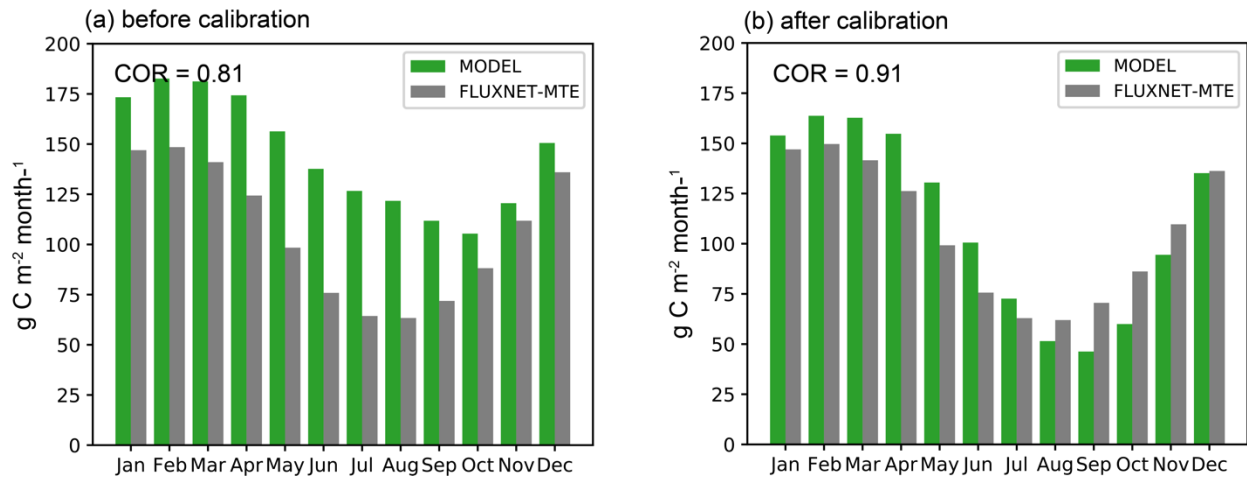


Figure S1 Monthly GPP ( $\text{g C m}^{-2} \text{ month}^{-1}$ ) in model and FLUXNET-MET (a) before and (b) after calibration

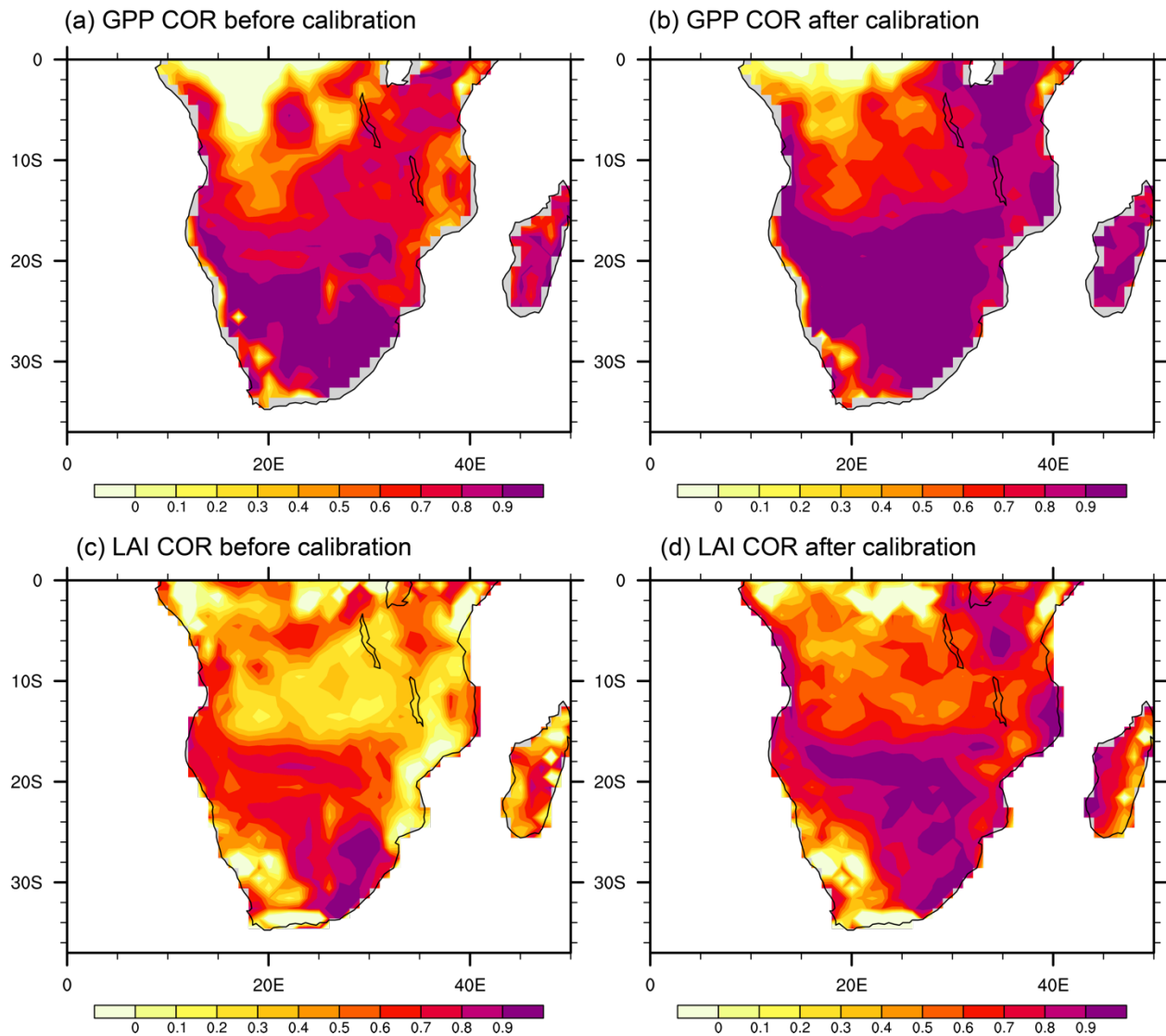


Figure S2 (a-b) Point-by-point monthly correlation between SSiB4/TRIFFID-Fire and FLUXNET-MTE GPP (a) before calibration and (b) after calibration. (c-d) Point-by-point monthly correlation between SSiB4/TRIFFID-Fire and GLASS LAI (c) before calibration and (d) after calibration.