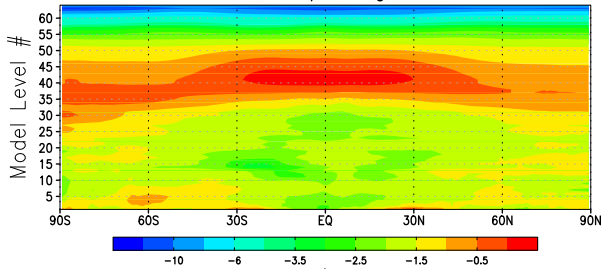
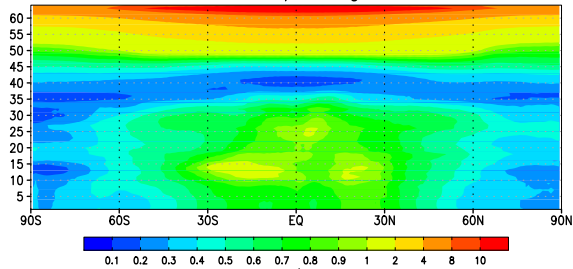


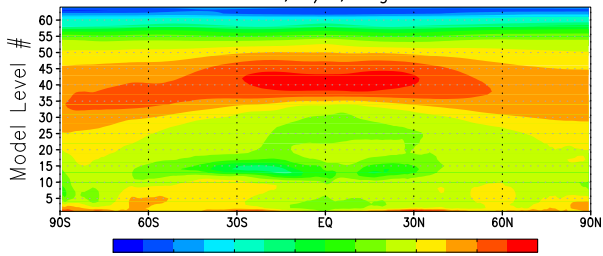
NN LWHR, K/d, Avg=-2.03



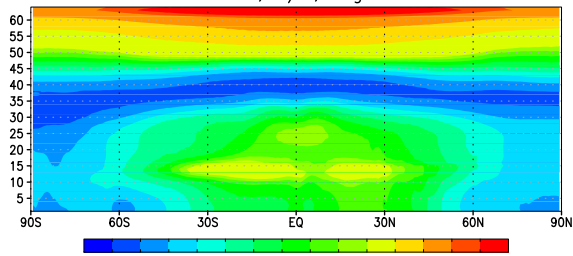
NN SWHR, K/d, Avg= 1.51



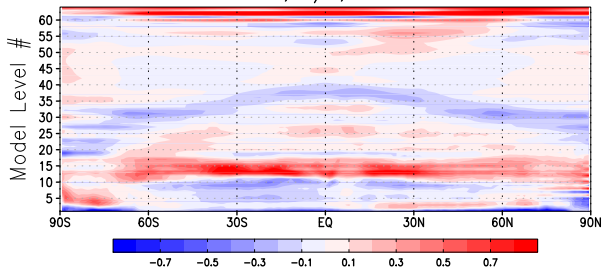
CTL LWHR, K/d, Avg=-2.08



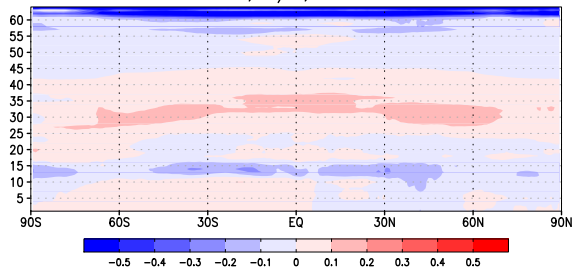
CTL SWHR, K/d, Avg= 1.54



NN-CTL LWHR, K/d, Bias=5.56e-02



NN-CTL SWHR, K/d, Bias=-3.62e-02



(a)

(b)