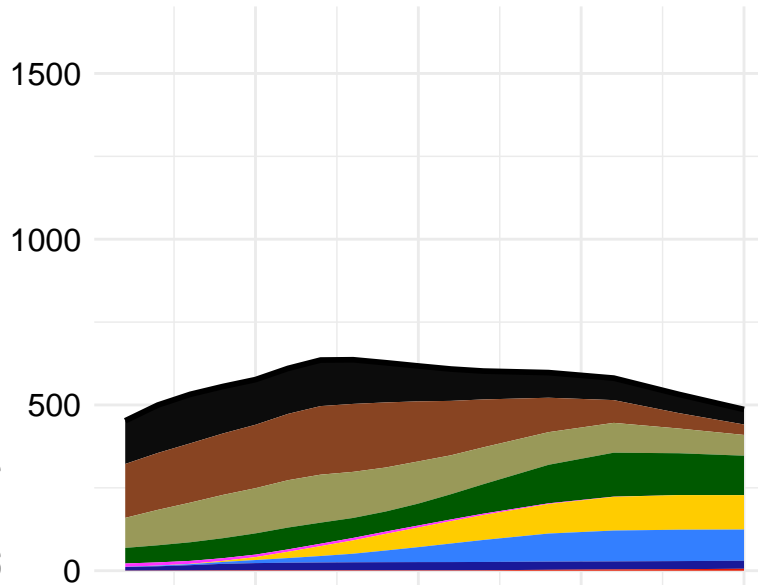
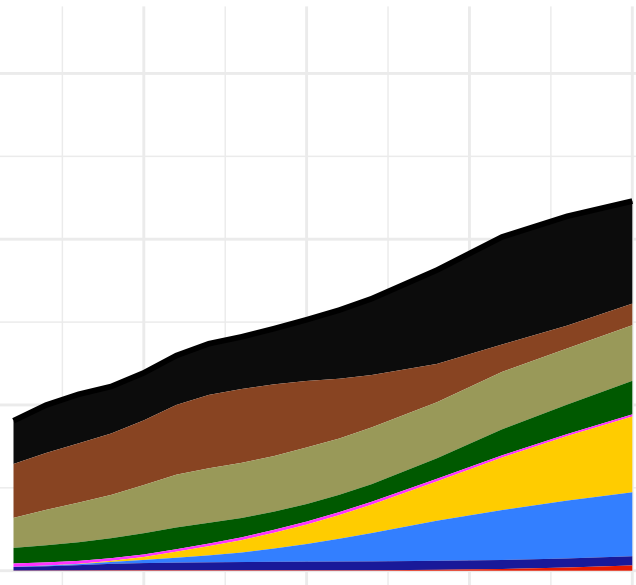


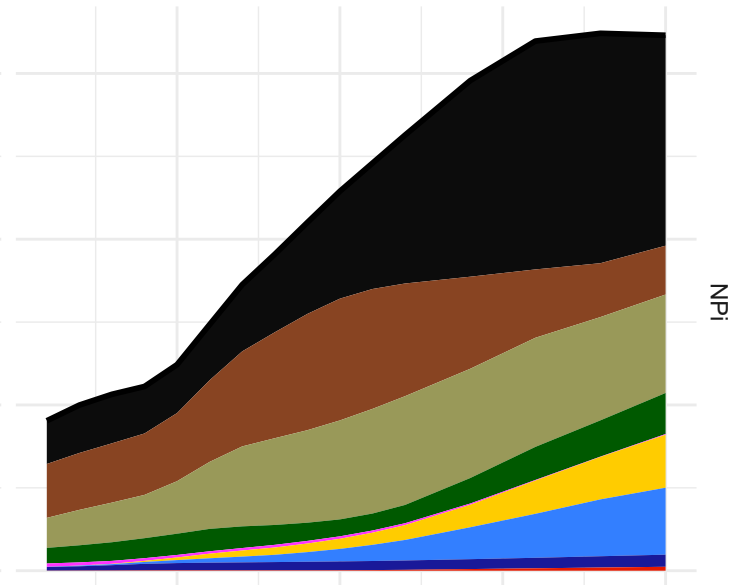
SSP1



SSP2



SSP5



Primary Energy [EJ/yr]

1500

1000

500

0

2025

2050

2075

2100

2025

2050

2075

2100

2025

2050

2075

2100



Coal



Oil



Gas



Biomass



Nuclear



Solar



Wind



Hydro



Geothermal



Total

IP

PKBudg900