



*Supplement of*

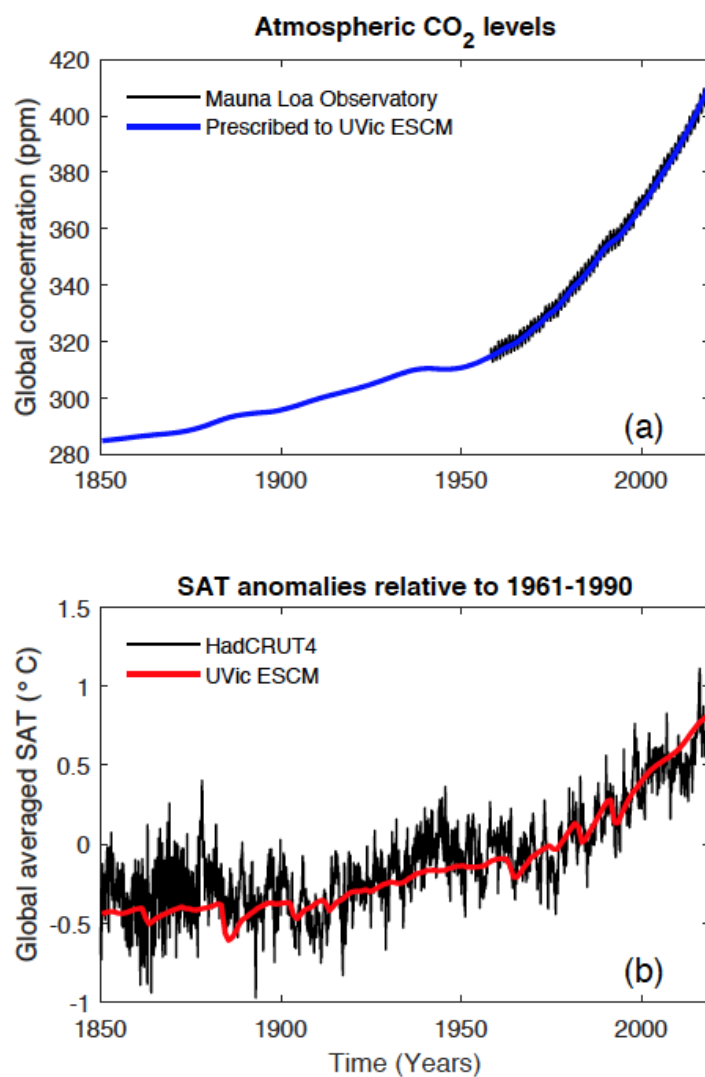
## **WETMETH 1.0: a new wetland methane model for implementation in Earth system models**

**Claude-Michel Nzotungicimpaye et al.**

*Correspondence to:* Claude-Michel Nzotungicimpaye (cnzotung@sfu.ca)

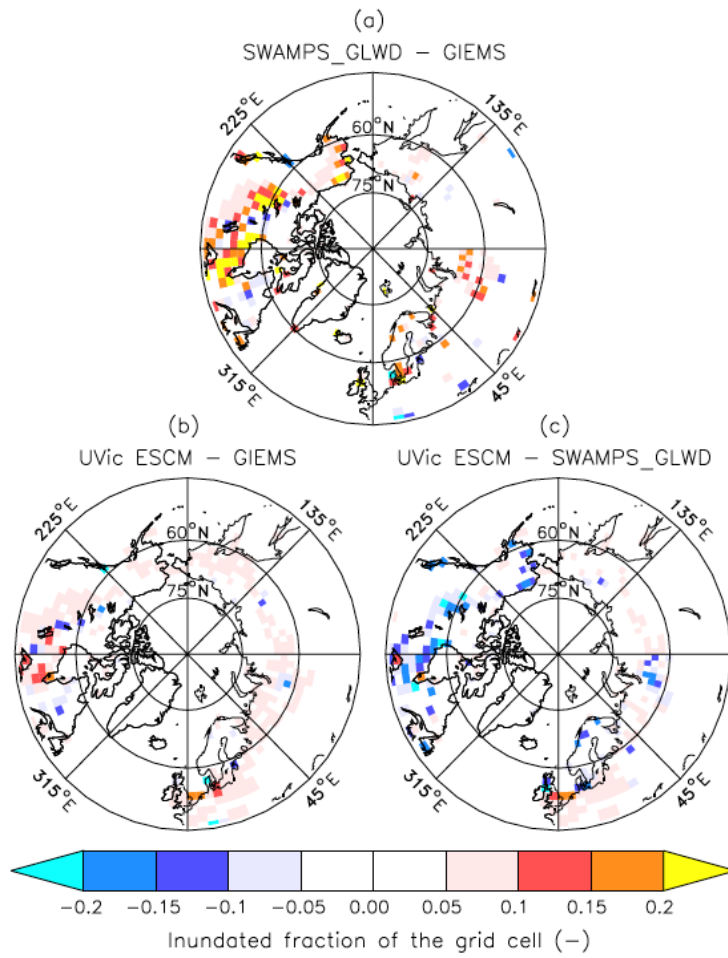
The copyright of individual parts of the supplement might differ from the article licence.

## 1 Supplementary figures



15

**Figure S1: Illustration of the global climate conditions from 1850 through 2019 as simulated by the fully coupled UVic ESCM: (a) Atmospheric CO<sub>2</sub> concentration prescribed to the model in comparison to measurements from the Mauna Loa Observatory. (b) Global surface air temperature (SAT) anomalies relative to 1961-1990 in comparison to the HadCRUT4 dataset.**



20

**Figure S2: Differences in northern wetland extents (inundated fractions of grid cells) between two datasets (GIEMS and SWAMPS-GLWD) and the UVic ESCM over the 2000-2007 period: (a) SWAMPS-GLWD – GIEMS, (b) UVic ESCM – GIEMS, and (c) UVic ESCM – SWAMPS-GLWD. The comparison period corresponds to the overlap period for the two datasets.**

## 25 2 Statistical evaluation

### 2.1 Methods

We consider four metrics to evaluate the model performance with respect to wetland extents and CH<sub>4</sub> emissions: the mean bias error (MBE), the mean absolute error (MAE), the root mean square error (RMSE), and the coefficient of determination (R<sup>2</sup>). These metrics allow to compare a set of observations (*Y*) and their predictions (*X*) (Ali and Abustan, 2014; Willmott, 30 1982).

MBE, MAE and RMSE are difference metrics and their respective formulas for a sample size *n* are given below:

$$\text{MBE} = \frac{1}{n} \sum_{i=1}^n (X_i - Y_i) \quad (\text{S1})$$

$$\text{MAE} = \frac{1}{n} \sum_{i=1}^n |X_i - Y_i| \quad (\text{S2})$$

$$\text{RMSE} = \sqrt{\frac{1}{n} \sum_{i=1}^n (X_i - Y_i)^2} \quad (\text{S3})$$

35 R<sup>2</sup> is a correlation metric from the linear regression theory. It is a measure of the extent to which *X* predicts the total variability in *Y* and is given by:

$$R^2 = \frac{\sum_{i=1}^n (\hat{Y}_i - \bar{Y})^2}{\sum_{i=1}^n (Y_i - \bar{Y})^2}, \quad (\text{S4})$$

where  $\hat{Y}_i$  is the predicted value of  $X_i$  and  $\bar{Y}$  is the mean of *Y*. R<sup>2</sup> varies between 0 and 1, with R<sup>2</sup> ~ 1 (R<sup>2</sup> ~ 0) indicating a strong (weak) linear correlation between *X* and *Y*.

40 For wetland extents, we use two observation-based datasets: GIEMS (Papa et al., 2010; Prigent et al., 2001, 2007, 2012) and SWAMPS-GLWD (Poulter et al., 2017). In each case, we calculate the metrics over grid cells containing wetlands for both the UVic ESCM and the dataset. For wetland CH<sub>4</sub> emissions, we use three upscaled flux measurements (UFMs) from across northern regions (>45°N): RF-DYPTOP, RF-GLWD, and RF-PEATMAT (Peltola et al., 2019). At the global scale, we use three process-based model ensembles: GCP-CH<sub>4</sub> (Poulter et al., 2017), WetCHARTs (Bloom et al., 2017), and 45 WETCHIMP (Melton et al., 2013). We calculate the metrics over grid cells in which the UVic ESCM and the UFM or model ensemble both predict CH<sub>4</sub> emissions (positive CH<sub>4</sub> fluxes). We use MATLAB version R2018b for all calculations.

### 2.2 Results for wetland extents

Results listed in Table S1 show that: (i) wetlands in the UVic ESCM are better simulated across northern regions (>45°N) than at the global scale (e.g. RMSE and R<sup>2</sup>), and (ii) the model agrees better with SWAMPS-GLWD than with GIEMS at the regional and global scale (all performance metrics). R<sup>2</sup> values suggest a weak linear correlation between our simulated and the estimated wetland extents globally. However, a previous study argues that R<sup>2</sup> and other correlation-based metrics are not best measures for evaluating the goodness-of-fit of hydrologic and hydroclimatic models as these metrics were found to be 50 over-sensitive to extreme values (outliers) and insensitive to additive and proportional differences between observations and

55 model predictions (Legates and McCabe, 1999). As a reference, our comparison of GIEMS to SWAMPS-GLWD yields  $R^2 = 0.12$  for northern high-latitudes ( $>45^\circ\text{N}$ ) and  $R^2 = 0.22$  for the globe.

**Table S1: Statistics for the model performance evaluation with respect to northern ( $>45^\circ\text{N}$ ) and global wetland extents. The UVic ESCM is compared to two global wetland datasets over the 2000-2007 period: GIEMS and SWAMPS-GLWD. Mean annual maximum extents over the same period are shown for reference.  $n$  represents the number of grid cells used in each comparison.**

	Mean annual	$n$	Statistical comparison with the UVic ESCM			
	max. extent ( $\times 10^6 \text{ km}^2$ )		MBE ( $\text{km}^2$ )	MAE ( $\text{km}^2$ )	RMSE ( $\text{km}^2$ )	$R^2$ (—)
Northern ( $>45^\circ\text{N}$ )						
UVic ESCM	4.76	—	—	—	—	—
GIEMS	3.05	429	787.5	1788.3	2374.7	0.09
SWAMPS-GLWD	4.71	690	-108.9	1712.7	2504.5	0.36
Global						
UVic ESCM	12.57	—	—	—	—	—
GIEMS	9.33	869	1024.9	3681.2	6175.5	0.05
SWAMPS-GLWD	10.59	1395	1124.2	2887.0	4234.1	0.11

60 The comparison of GIEMS to SWAMPS-GLWD yields  $\text{MBE} = -966.7 \text{ km}^2$ ;  $\text{MAE} = 1898.9 \text{ km}^2$ ;  $\text{RMSE} = 3313.3 \text{ km}^2$ ; and  $R^2 = 0.12$  for wetlands north of  $45^\circ\text{N}$  ( $n = 506$ ). The comparison yields  $\text{MBE} = -65.1 \text{ km}^2$ ;  $\text{MAE} = 2852.5 \text{ km}^2$ ;  $\text{RMSE} = 5668.7 \text{ km}^2$ ; and  $R^2 = 0.22$  for global wetlands ( $n = 1222$ ).

### 2.3 Results for wetland methane emissions

Table S2 lists the evaluation statistics for wetland  $\text{CH}_4$  emissions. For wetlands north of  $45^\circ\text{N}$ , results show that the UVic ESCM has no preferential agreement with one of the three UFM s (all performance metrics). Based on the compared grid cells, however, the UVic ESCM simulates more  $\text{CH}_4$  emissions than RF-DYPTOP ( $\text{MBE} > 0$ ) and less  $\text{CH}_4$  emissions than RF-GLWD and RF-PEATMAP ( $\text{MBE} < 0$ ). At the global scale, the UVic ESCM compares similarly to the three model ensembles (all performance metrics); although simulated  $\text{CH}_4$  emissions are higher than those predicted by the WetCHARTs ensemble ( $\text{MBE} > 0$ ) and lower than those predicted by GCP- $\text{CH}_4$  and WETCHIMP ensembles ( $\text{MBE} < 0$ ).

At both the regional and global scale,  $R^2$  values suggest a weak linear correlation between the UVic ESCM and the different UFM s or model ensembles (Table S2). As a reference, the inter-comparison of the UFM s yields  $R^2$  values between 0.1 and 0.4 (0.14 for RF-DYPTOP and RF-GLWD; 0.32 for RF-DYPTOP and RF-PEATMAP; 0.33 for RF-GLWD and RF-PEATMAP). The inter-comparison of the model ensembles yields  $R^2$  values ranging from 0.25 to 0.55 (0.25 for WetCHARTs and WETCHIMP; 0.28 for GCP- $\text{CH}_4$  and WETCHIMP; 0.55 for WetCHARTs and GCP- $\text{CH}_4$ ). The highest  $R^2$  value for WetCHARTs and GCP- $\text{CH}_4$  may be justified by the fact that the two model ensembles are based on the same wetland dataset (SWAMPS-GLWD) (Bloom et al., 2017; Poulter et al., 2017). However, the comparison of these two model ensembles with respect to wetland  $\text{CH}_4$  emission intensities ( $\text{CH}_4$  emissions per unit of wetland area) yields a small  $R^2$  value ( $R^2 < 0.1$ ). In fact, the comparison between the UVic ESCM and the three model ensembles as well as the inter-comparison of the model ensembles all yield small  $R^2$  values ( $R^2 < 0.1$ ) for both northern and global wetlands. This result suggests that large-scale wetland  $\text{CH}_4$  intensities are generally not consistent across process-based models.

80 **Table S2: Statistics for the model performance evaluation with respect to CH<sub>4</sub> emissions from northern (>45°N) and global wetlands. For northern wetland CH<sub>4</sub> emissions, the model is compared to three upscaled flux measurements over the 2013-2014 period: RF-DYPTOP, RF-GLWD and RF-PEATMAP. For global wetland CH<sub>4</sub> emissions, the model is compared to three process-based model ensembles over the 2001-2004 period: GCP-CH<sub>4</sub>, WetCHARTs and WETCHIMP. Annual mean wetland CH<sub>4</sub> emissions over the same period are shown for reference. *n* represents the number of grid cells used in each comparison.**

	Annual mean	<i>n</i>	Statistical comparison with the UVic ESCM			
	emissions (Tg CH <sub>4</sub> yr <sup>-1</sup> )		MBE (Tg CH <sub>4</sub> yr <sup>-1</sup> )	MAE (Tg CH <sub>4</sub> yr <sup>-1</sup> )	RMSE (Tg CH <sub>4</sub> yr <sup>-1</sup> )	R <sup>2</sup> (—)
<b>Northern (&gt;45°N)</b>						
UVic ESCM	33.2	—	—	—	—	—
RF-DYPTOP	30.6 ± 9.2	562	0.0041	0.0433	0.0675	0.14
RF-GLWD	37.6 ± 11.8	370	-0.0379	0.0723	0.1044	0.24
RF-PEATMAP	31.7 ± 9.4	351	-0.0256	0.0531	0.0862	0.20
<b>Global</b>						
UVic ESCM	154.4	—	—	—	—	—
GCP-CH <sub>4</sub>	160.4 ± 28.1	1219	-0.0007	0.1167	0.2501	0.11
WetCHARTs	147.3 ± 31.6	1388	0.0153	0.1037	0.2342	0.16
WETCHIMP	182.9 ± 43.1	1539	-0.0092	0.1061	0.2220	0.19

85 The comparison of RF-DYPTOP to RF-GLWD yields MBE = -0.0304 Tg CH<sub>4</sub> yr<sup>-1</sup>; MAE = 0.0661 Tg CH<sub>4</sub> yr<sup>-1</sup>; RMSE = 0.1073 Tg CH<sub>4</sub> yr<sup>-1</sup>; and R<sup>2</sup> = 0.14 (*n* = 468). The comparison of RF-DYPTOP to RF-PEATMAP yields MBE = -0.0219 Tg CH<sub>4</sub> yr<sup>-1</sup>; MAE = 0.0575 Tg CH<sub>4</sub> yr<sup>-1</sup>; RMSE = 0.0846 Tg CH<sub>4</sub> yr<sup>-1</sup>; and R<sup>2</sup> = 0.32 (*n* = 365). The comparison of RF-GLWD to RF-PEATMAP yields MBE = 0.0085 Tg CH<sub>4</sub> yr<sup>-1</sup>; MAE = 0.0677 Tg CH<sub>4</sub> yr<sup>-1</sup>; RMSE = 0.1023 Tg CH<sub>4</sub> yr<sup>-1</sup>; and R<sup>2</sup> = 0.33 (*n* = 266).

90 The comparison of GCP-CH<sub>4</sub> to WetCHARTs yields MBE = 0.0213 Tg CH<sub>4</sub> yr<sup>-1</sup>; MAE = 0.0641 Tg CH<sub>4</sub> yr<sup>-1</sup>; RMSE = 0.1735 Tg CH<sub>4</sub> yr<sup>-1</sup>; and R<sup>2</sup> = 0.55 (*n* = 1727). The comparison of GCP-CH<sub>4</sub> to WETCHIMP yields MBE = -0.0192 Tg CH<sub>4</sub> yr<sup>-1</sup>; MAE = 0.0991 Tg CH<sub>4</sub> yr<sup>-1</sup>; RMSE = 0.2433 Tg CH<sub>4</sub> yr<sup>-1</sup>; and R<sup>2</sup> = 0.28 (*n* = 1780). The comparison of WetCHARTs to WETCHIMP yields MBE = -0.0304 Tg CH<sub>4</sub> yr<sup>-1</sup>; MAE = 0.0641 Tg CH<sub>4</sub> yr<sup>-1</sup>; RMSE = 0.1735 Tg CH<sub>4</sub> yr<sup>-1</sup>; and R<sup>2</sup> = 0.25 (*n* = 2103).

## References

- 95 Ali, M. H. and Abustan, I.: A new novel index for evaluating model performance, *J. Nat. Resour. Dev.*, 4, 1–9, 2014.
- Bloom, A. A., Bowman, K. W., Lee, M., Turner, A. J., Schroeder, R., Worden, J. R., Weidner, R., McDonald, K. C. and Jacob, D. J.: A global wetland methane emissions and uncertainty dataset for atmospheric chemical transport models (WetCHARTs version 1.0), *Geosci. Model Dev.*, 10, 2141–2156, 2017.
- 100 Legates, D. R. and McCabe, J. R.: Evaluating the use of “goodness-of-fit” measures in hydrologic and hydroclimatic model validation, *Water Resour. Res.*, 35, 233–241, 1999.
- Melton, J. R., Wania, R., Hodson, E. L., Poulter, B., Ringeval, B., Spahni, R., Bohn, T., Avis, C. A., Beerling, D. J., Chen, G., Eliseev, A. V., Denisov, S. N., Hopcroft, P. O., Lettenmaier, D. P., Riley, W. J., Singarayer, J. S., Subin, Z. M., Tian, H., Zürcher, S., Brovkin, V., van Bodegom, P. M., Kleinen, T., Yu, Z. C. and Kaplan, J. O.: Present state of global wetland extent and wetland methane modelling: Conclusions from a model inter-comparison project (WETCHIMP), *Biogeosciences*, 10, 753–788, 2013.
- 105 Papa, F., Prigent, C., Aires, F., Jimenez, C., Rossow, W. B. and Matthews, E.: Interannual variability of surface water extent at the global scale, 1993-2004, *J. Geophys. Res. Atmos.*, 115, D12111, 2010.
- Peltola, O., Vesala, T., Gao, Y., Rätty, O., Alekseychik, P., Aurela, M., Chojnicki, B., Desai, A. R., Dolman, A. J., Euskirchen, E. S., Friborg, T., Göckede, M., Helbig, M., Humphreys, E., Jackson, R. B., Jocher, G., Joos, F., Klatt, J., Knox, S. H., Kowalska, N., Kutzbach, L., Lienert, S., Lohila, A., Mammarella, I., Nadeau, D. F., Nilsson, M. B., Oechel, W. C., Peichl, M., Pypker, T., Quinton, W., Rinne, J., Sachs, T., Samson, M., Schmid, H. P., Sonntag, O., Wille, C., Zona, D. and Aalto, T.: Monthly gridded data product of northern wetland methane emissions based on upscaling eddy covariance observations, *Earth Syst. Sci. Data*, 11, 1263–1289, 2019.
- 115 Poulter, B., Bousquet, P., Canadell, J. G., Ciais, P., Peregon, A., Saunio, M., Arora, V. K., Beerling, D. J., Brovkin, V., Jones, C. D., Joos, F., Gedney, N., Ito, A., Kleinen, T., Koven, C. D., McDonald, K., Melton, J. R., Peng, C., Peng, S., Prigent, C., Schroeder, R., Riley, W. J., Saito, M., Spahni, R., Tian, H., Taylor, L., Viogy, N., Wilton, D., Wiltshire, A., Xu, X., Zhang, B., Zhang, Z. and Zhu, Q.: Global wetland contribution to 2000-2012 atmospheric methane growth rate dynamics, *Environ. Res. Lett.*, 12, 094013, 2017.
- 120 Prigent, C., Matthews, E., Aires, F. and Rossow, W. B.: Remote sensing of global wetland dynamics with multiple satellite data sets, *Geophys. Res. Lett.*, 28, 4631–4634, 2001.
- Prigent, C., Papa, F., Aires, F., Rossow, W. B. and Matthews, E.: Global inundation dynamics inferred from multiple satellite observations, 1993-2000, *J. Geophys. Res. Atmos.*, 112, D12107, 2007.
- Prigent, C., Papa, F., Aires, F., Jiménez, C., Rossow, W. B. and Matthews, E.: Changes in land surface water dynamics since the 1990s and relation to population pressure, *Geophys. Res. Lett.*, 39, L08403, 2012.
- 125 Willmott, C. J.: Some comments on the evaluation of model performance, *Bull. Am. Meteorol. Soc.*, 63, 1309–1313, 1982.