



*Supplement of*

**Development of a coupled simulation framework representing the lake and river continuum of mass and energy (TCHOIR v1.0)**

**Daisuke Tokuda et al.**

*Correspondence to:* Daisuke Tokuda (tokuda@civil.t.u-tokyo.ac.jp)

The copyright of individual parts of the supplement might differ from the article licence.

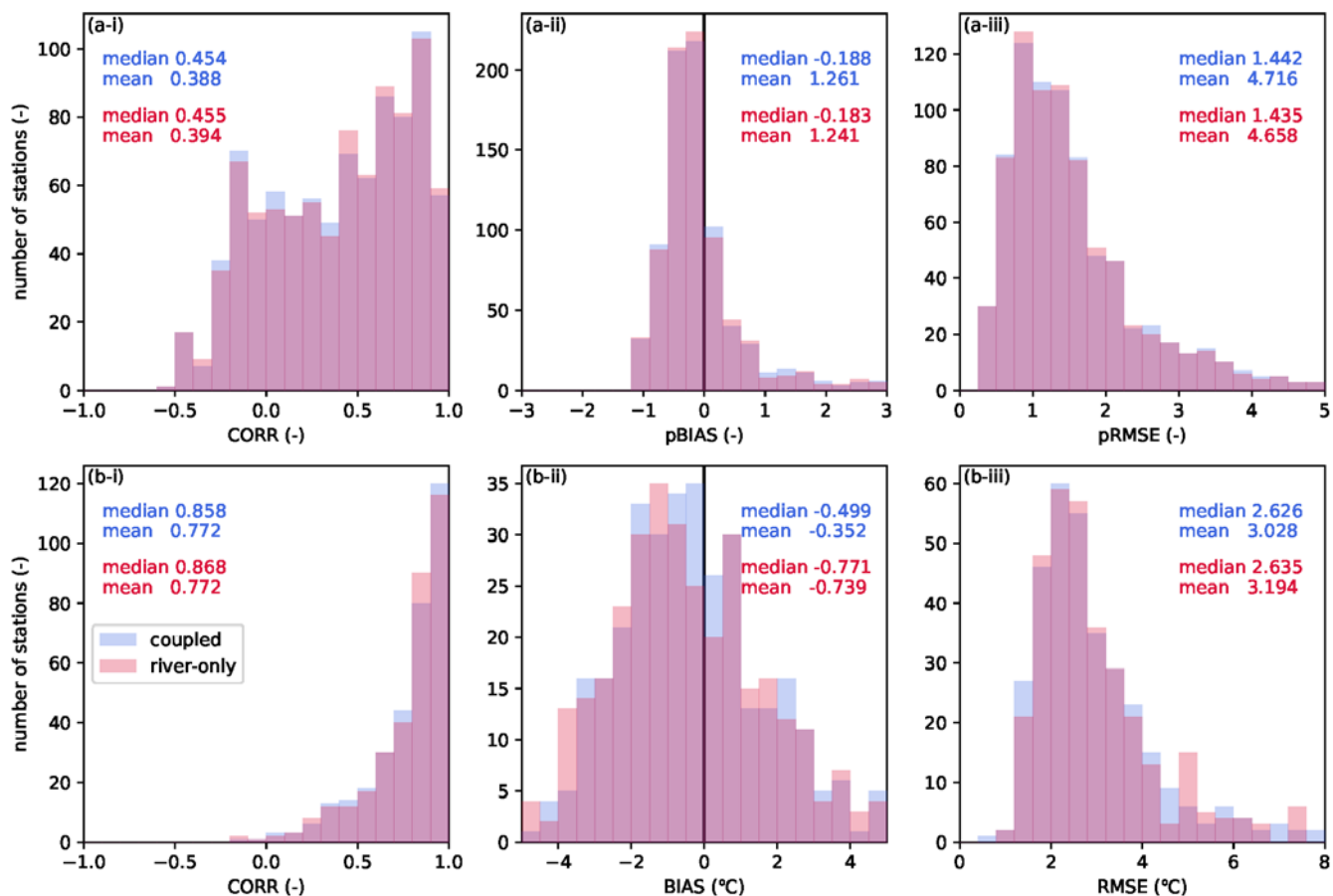


Figure S1: Comparison between reproducibility indices of river discharge and temperature for stations which are not located in downstream area of lakes: bars are the histograms of each index, and the numbers indicate the associated median and mean values, under JRA55-ELSE meteorological forcing dataset. Blue (red) bars and written values show the results of the coupled (river-only) simulation. (a) CORR, (b) (p)BIAS, and (c) (p)RMSE.