

Supplement of Geosci. Model Dev., 12, 1703–1724, 2019  
<https://doi.org/10.5194/gmd-12-1703-2019-supplement>  
© Author(s) 2019. This work is distributed under  
the Creative Commons Attribution 4.0 License.



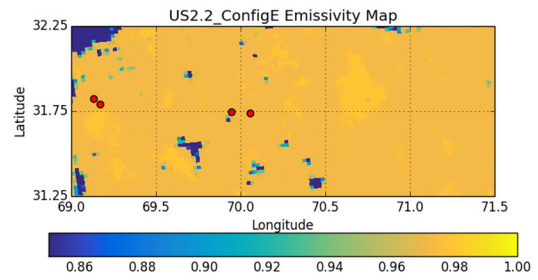
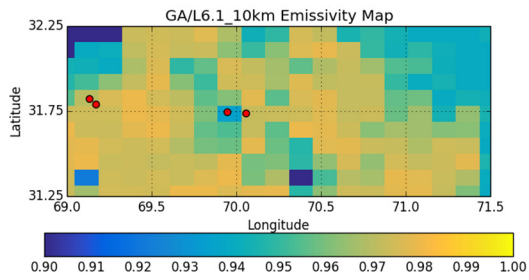
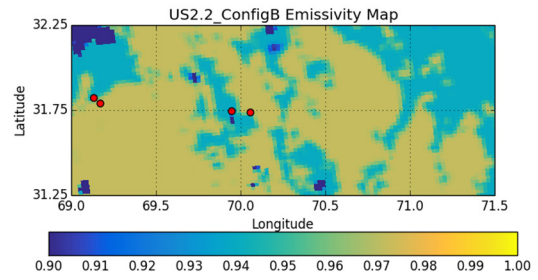
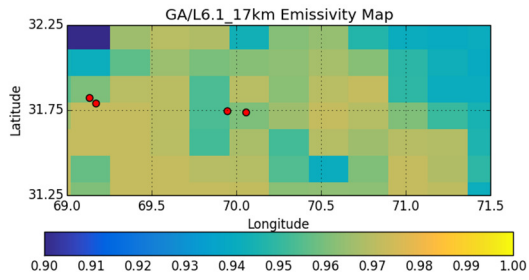
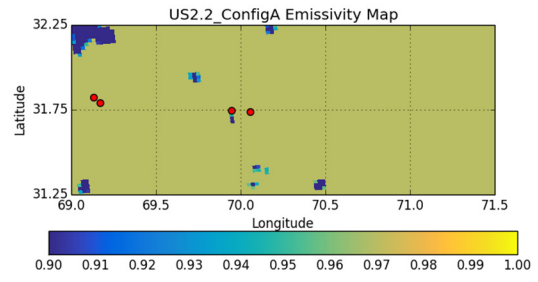
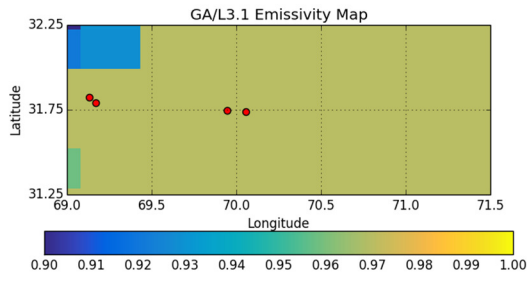
*Supplement of*

**Evaluating the Met Office Unified Model land surface temperature in  
Global Atmosphere/Land 3.1 (GA/L3.1), Global Atmosphere/Land 6.1  
(GA/L6.1) and limited area 2.2 km configurations**

**Jennifer K. Brooke et al.**

*Correspondence to:* J. K. Brooke ([jennifer.brooke@metoffice.gov.uk](mailto:jennifer.brooke@metoffice.gov.uk))

The copyright of individual parts of the supplement might differ from the CC BY 4.0 License.



**Supplementary Figure 1. Emissivity map of the study area (a) GA/L3.1; (b) GA/L6.1\_17km; (c) GA/L6.1\_10km; (d) US2.2\_ConfigA; (e) US2.2\_ConfigB; and (f) US2.2\_ConfigC.**