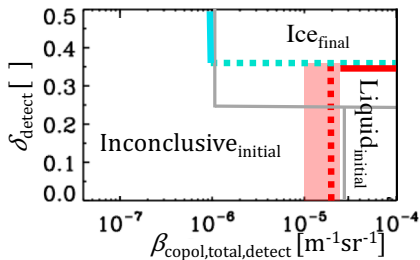
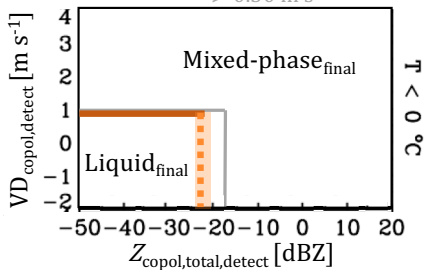


(1) Use lidar everywhere it detects

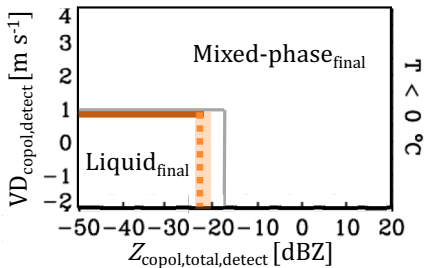


(3) Use radar where lidar does not detect or lidar initial classification is inconclusive

Where $\text{SW}_{\text{copol,detect}} > 0.24-0.31 \text{ m s}^{-1}$
 $> 0.30 \text{ m s}^{-1}$



(2) Use radar where **Liquid_{initial}** and within 750m from cloud top if liquid was detected



(4) Use radar where lidar does not detect or lidar initial classification is inconclusive

Where $\text{SW}_{\text{copol,detect}} < 0.24-0.31 \text{ m s}^{-1}$
 $< 0.30 \text{ m s}^{-1}$

