

Supplement of Geosci. Model Dev., 10, 2547–2566, 2017
<https://doi.org/10.5194/gmd-10-2547-2017-supplement>
© Author(s) 2017. This work is distributed under
the Creative Commons Attribution 3.0 License.



Supplement of

A multi-diagnostic approach to cloud evaluation

Keith D. Williams and Alejandro Bodas-Salcedo

Correspondence to: Keith Williams (keith.williams@metoffice.gov.uk)

The copyright of individual parts of the supplement might differ from the CC BY 3.0 License.

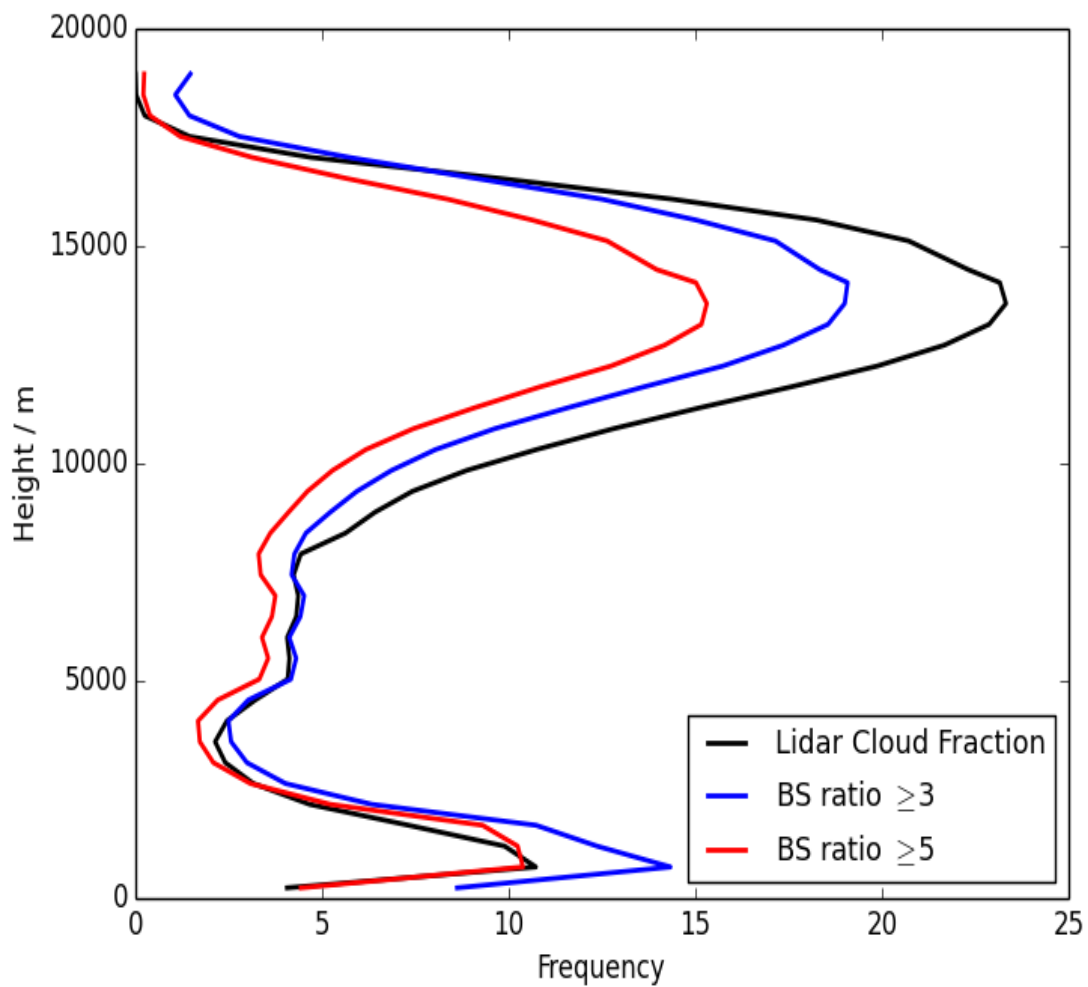


Figure S1: CALIPSO observed height—cloud frequency histograms for the tropics (20°N-20°S). Black is the lidar cloud fraction obtained from the RL-GEOPROF product (and thus is based on the lidar cloud detection algorithm). Blue and red are obtained from CALIPSO height—backscatter ratio histograms by adding together the backscatter ratio bins ≥ 3 and ≥ 5 respectively.

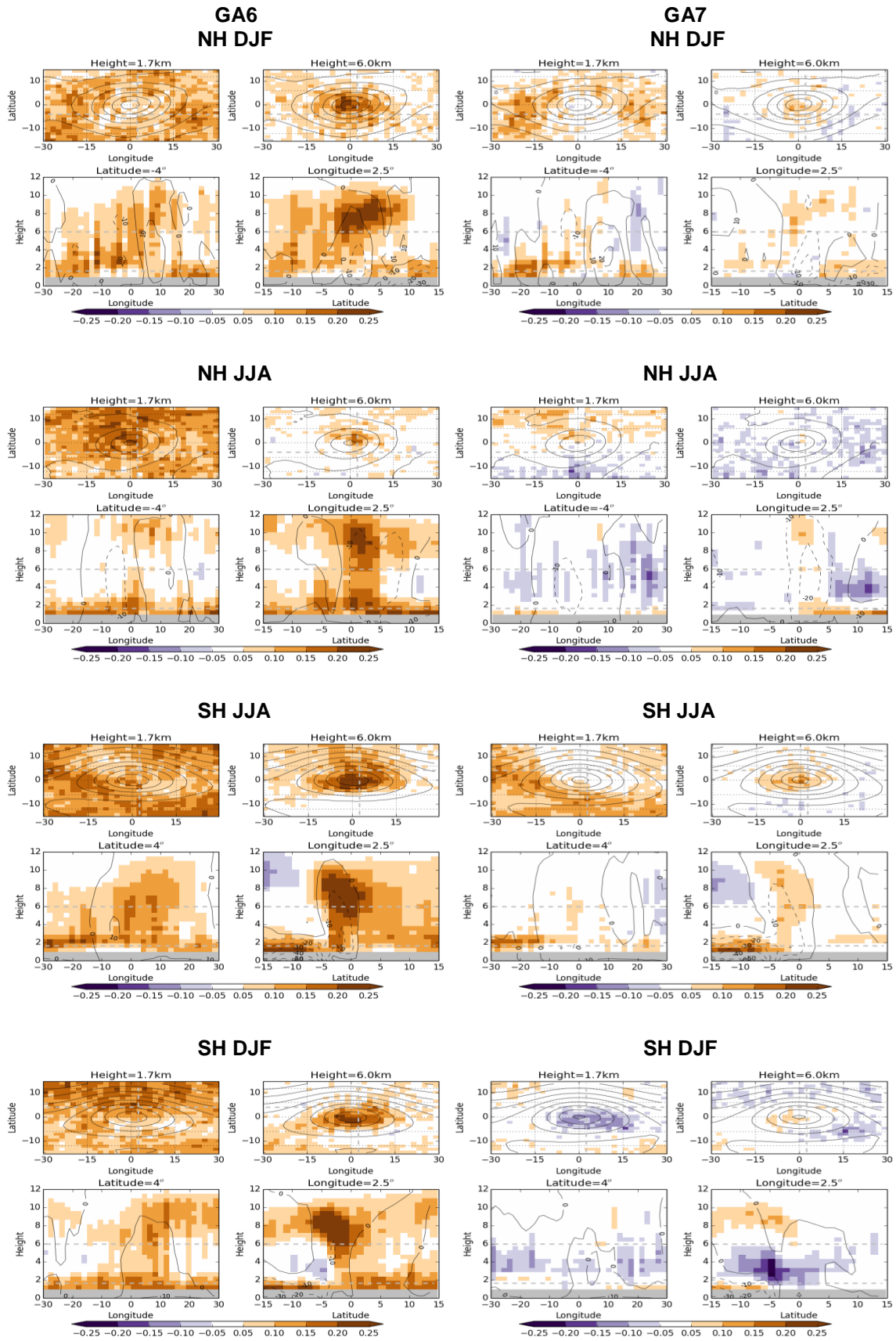


Figure S2: Cloud fraction bias for GA6 (left) and GA7 (right) composite cyclones (as per Figure 7 in main paper). From top to bottom are northern hemisphere winter, northern hemisphere summer, southern hemisphere winter and southern hemisphere summer.

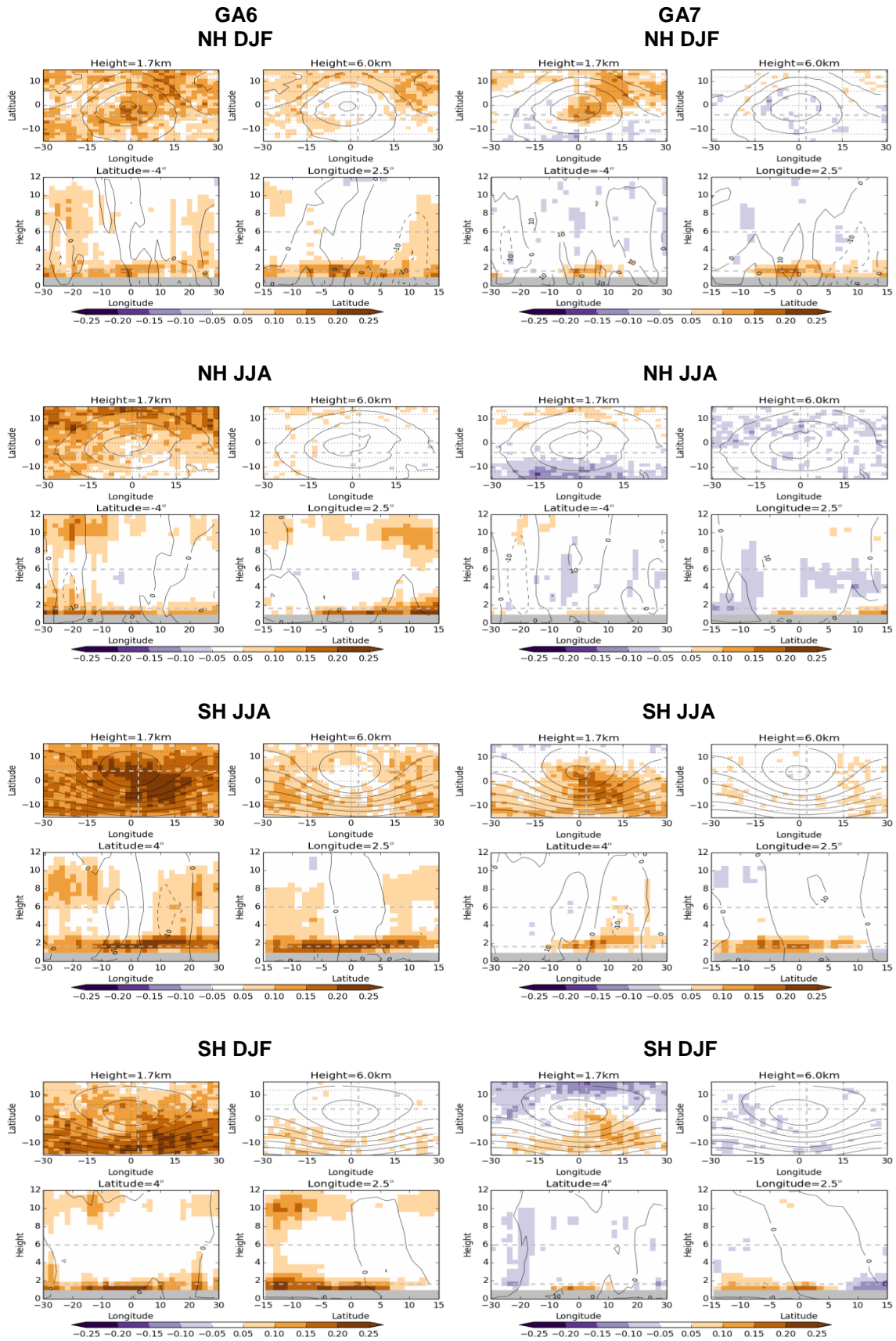


Figure S3: As Supplementary figure 2 but for anticyclones.

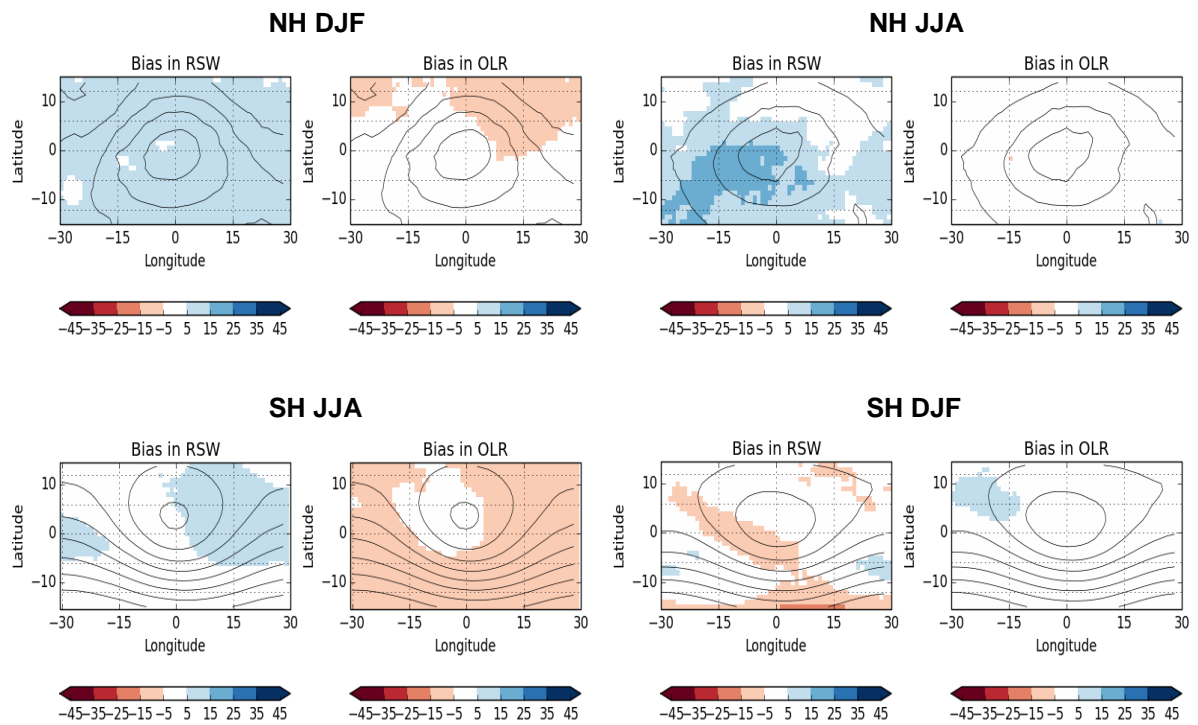


Figure S4: RSW and OLR bias for GA7 composite anticyclones (as per Figure 9 in main paper).